



Full wwPDB X-ray Structure Validation Report ⓘ

Jan 31, 2017 – 05:53 PM EST

PDB ID : 5M7L
Title : Blastochloris viridis photosynthetic reaction center synchrotron structure
Authors : Sharma, A.S.; Johansson, L.; Dunevall, E.; Wahlgren, W.Y.; Neutze, R.; Kato, G.
Deposited on : 2016-10-28
Resolution : 3.60 Å(reported)

This is a Full wwPDB X-ray Structure Validation Report for a publicly released PDB entry.

We welcome your comments at validation@mail.wwpdb.org

A user guide is available at

<http://wwpdb.org/validation/2016/XrayValidationReportHelp>

with specific help available everywhere you see the ⓘ symbol.

The following versions of software and data (see [references ⓘ](#)) were used in the production of this report:

MolProbity : 4.02b-467
Mogul : 1.7.1 (RC1), CSD as537be (2016)
Xtriage (Phenix) : 1.9-1692
EDS : rb-20028442
Percentile statistics : 20151230.v01 (using entries in the PDB archive December 30th 2015)
Refmac : 5.8.0135
CCP4 : 6.5.0
Ideal geometry (proteins) : Engh & Huber (2001)
Ideal geometry (DNA, RNA) : Parkinson et al. (1996)
Validation Pipeline (wwPDB-VP) : rb-20028442

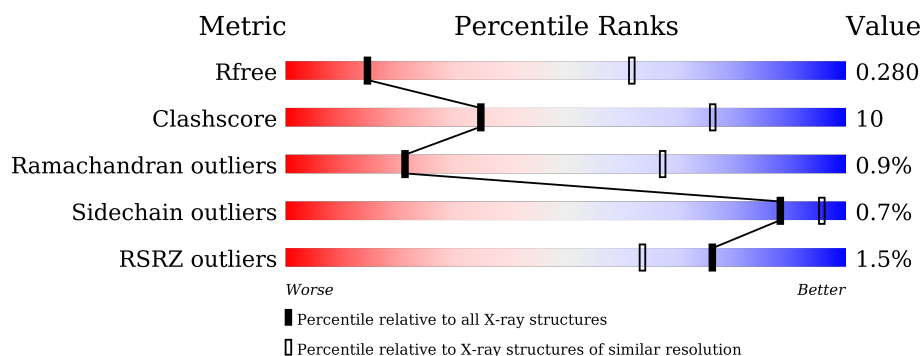
1 Overall quality at a glance

The following experimental techniques were used to determine the structure:

X-RAY DIFFRACTION

The reported resolution of this entry is 3.60 Å.

Percentile scores (ranging between 0-100) for global validation metrics of the entry are shown in the following graphic. The table shows the number of entries on which the scores are based.



Metric	Whole archive (#Entries)	Similar resolution (#Entries, resolution range(Å))
R_{free}	91344	1408 (3.80-3.40)
Clashscore	102246	1010 (3.74-3.46)
Ramachandran outliers	100387	1007 (3.76-3.44)
Sidechain outliers	100360	1007 (3.76-3.44)
RSRZ outliers	91569	1003 (3.78-3.42)

The table below summarises the geometric issues observed across the polymeric chains and their fit to the electron density. The red, orange, yellow and green segments on the lower bar indicate the fraction of residues that contain outliers for ≥ 3 , 2, 1 and 0 types of geometric quality criteria. A grey segment represents the fraction of residues that are not modelled. The numeric value for each fraction is indicated below the corresponding segment, with a dot representing fractions $\leq 5\%$. The upper red bar (where present) indicates the fraction of residues that have poor fit to the electron density. The numeric value is given above the bar.

Mol	Chain	Length	Quality of chain
1	A	356	<div> <div>81%</div> <div>12%</div> <div>7%</div> </div>
2	B	274	<div> <div>82%</div> <div>16%</div> <div>••</div> </div>
3	C	324	<div> <div>85%</div> <div>14%</div> </div>
4	D	258	<div> <div>4%</div> <div>67%</div> <div>23%</div> <div>•• 6%</div> </div>

The following table lists non-polymeric compounds, carbohydrate monomers and non-standard residues in protein, DNA, RNA chains that are outliers for geometric or electron-density-fit crite-

ria:

Mol	Type	Chain	Res	Chirality	Geometry	Clashes	Electron density
11	MQ7	C	404	-	-	-	X
12	NS5	C	405	-	-	-	X
13	OTP	C	406	-	-	-	X
14	PO4	C	408	-	-	-	X
6	DGA	A	405	-	-	-	X
9	MPG	B	305	-	-	-	X
9	MPG	B	306	-	-	-	X
9	MPG	C	407	-	-	-	X

2 Entry composition

There are 14 unique types of molecules in this entry. The entry contains 9890 atoms, of which 0 are hydrogens and 0 are deuteriums.

In the tables below, the ZeroOcc column contains the number of atoms modelled with zero occupancy, the AltConf column contains the number of residues with at least one atom in alternate conformation and the Trace column contains the number of residues modelled with at most 2 atoms.

- Molecule 1 is a protein called Photosynthetic reaction center cytochrome c subunit.

Mol	Chain	Residues	Atoms					ZeroOcc	AltConf	Trace
1	A	332	Total	C	N	O	S	0	0	0
			2598	1637	465	478	18			

- Molecule 2 is a protein called Reaction center protein L chain.

Mol	Chain	Residues	Atoms					ZeroOcc	AltConf	Trace
2	B	273	Total	C	N	O	S	0	2	0
			2170	1458	350	355	7			

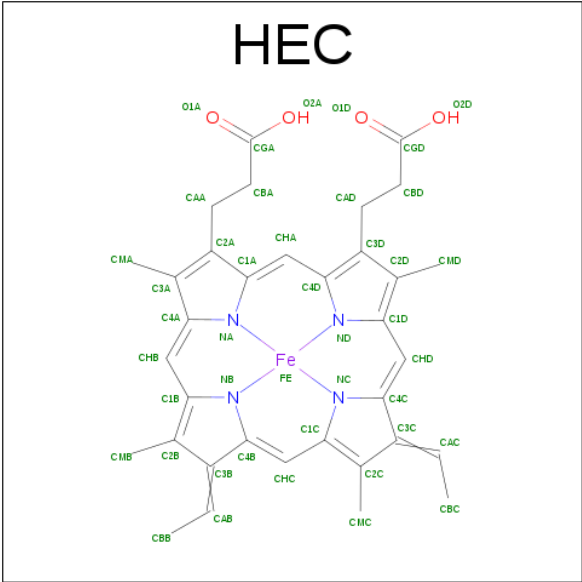
- Molecule 3 is a protein called Reaction center protein M chain.

Mol	Chain	Residues	Atoms					ZeroOcc	AltConf	Trace
3	C	323	Total	C	N	O	S	0	0	0
			2546	1696	417	422	11			

- Molecule 4 is a protein called Reaction center protein H chain.

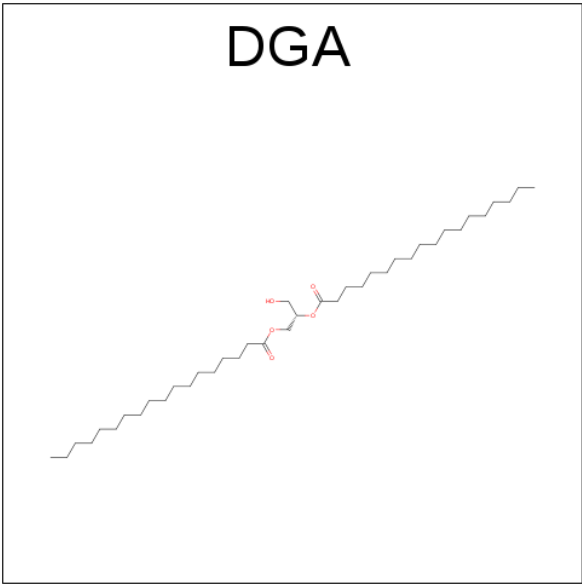
Mol	Chain	Residues	Atoms					ZeroOcc	AltConf	Trace
4	D	243	Total	C	N	O	S	0	0	0
			1771	1140	297	332	2			

- Molecule 5 is HEME C (three-letter code: HEC) (formula: $C_{34}H_{34}FeN_4O_4$).



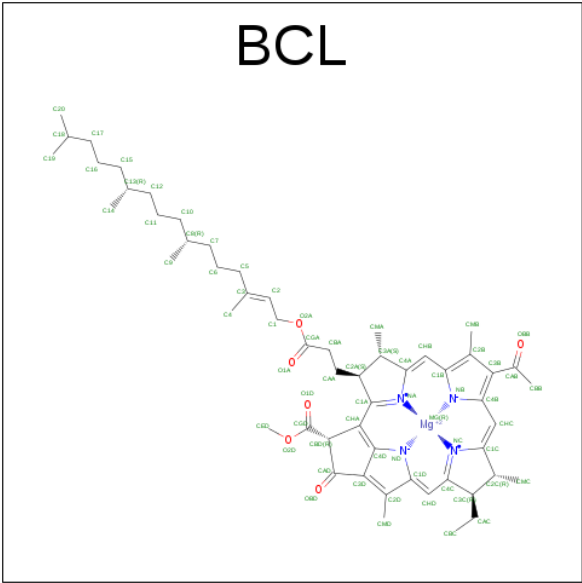
Mol	Chain	Residues	Atoms					ZeroOcc	AltConf
5	A	1	Total	C	Fe	N	O	0	0
			43	34	1	4	4		
5	A	1	Total	C	Fe	N	O	0	0
			43	34	1	4	4		
5	A	1	Total	C	Fe	N	O	0	0
			43	34	1	4	4		
5	A	1	Total	C	Fe	N	O	0	0
			43	34	1	4	4		

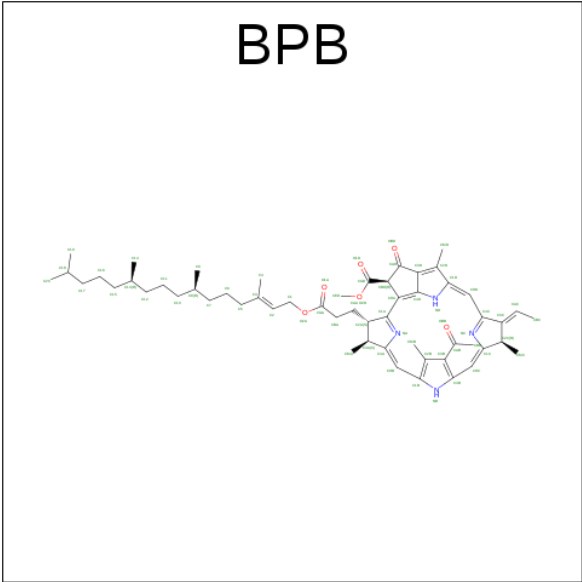
- Molecule 6 is DIACYL GLYCEROL (three-letter code: DGA) (formula: C₃₉H₇₆O₅).



Mol	Chain	Residues	Atoms			ZeroOcc	AltConf
6	A	1	Total	C	O	0	0
			37	33	4		

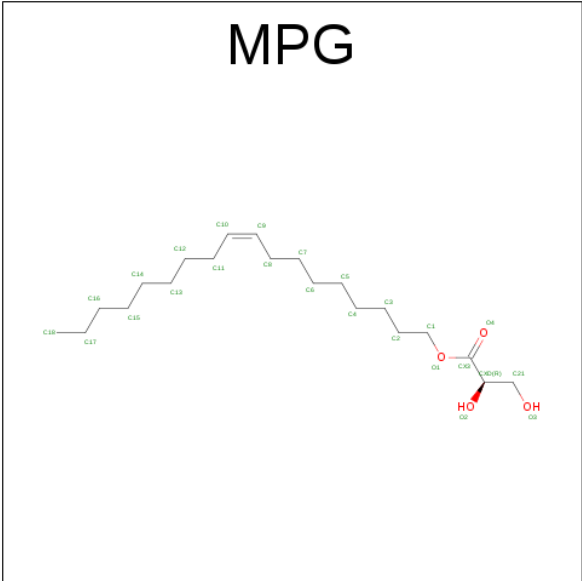
- Molecule 7 is BACTERIOCHLOROPHYLL A (three-letter code: BCL) (formula: C₅₅H₇₄MgN₄O₆).





Mol	Chain	Residues	Atoms				ZeroOcc	AltConf
8	B	1	Total	C	N	O	0	0
			65	55	4	6		
8	C	1	Total	C	N	O	0	0
			61	51	4	6		

- Molecule 9 is [(Z)-octadec-9-enyl] (2R)-2,3-bis(oxidanyl)propanoate (three-letter code: MPG) (formula: C₂₁H₄₀O₄).



Mol	Chain	Residues	Atoms			ZeroOcc	AltConf
9	B	1	Total	C	O	0	0
			25	21	4		

Continued on next page...

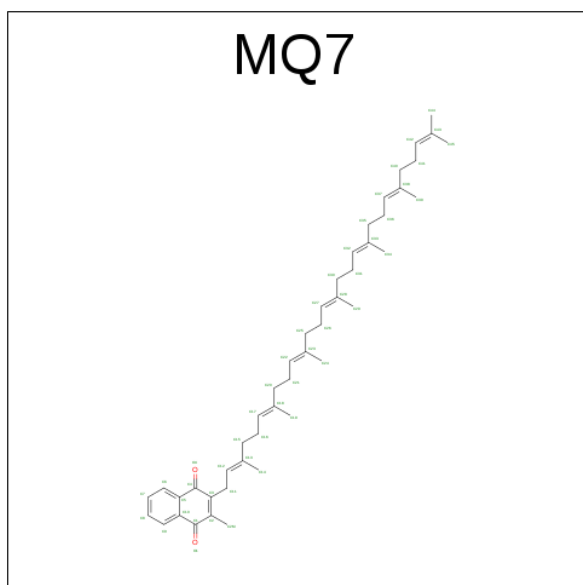
Continued from previous page...

Mol	Chain	Residues	Atoms	ZeroOcc	AltConf
9	B	1	Total C O 25 21 4	0	0
9	C	1	Total C 17 17	0	0

- Molecule 10 is FE (II) ION (three-letter code: FE2) (formula: Fe).

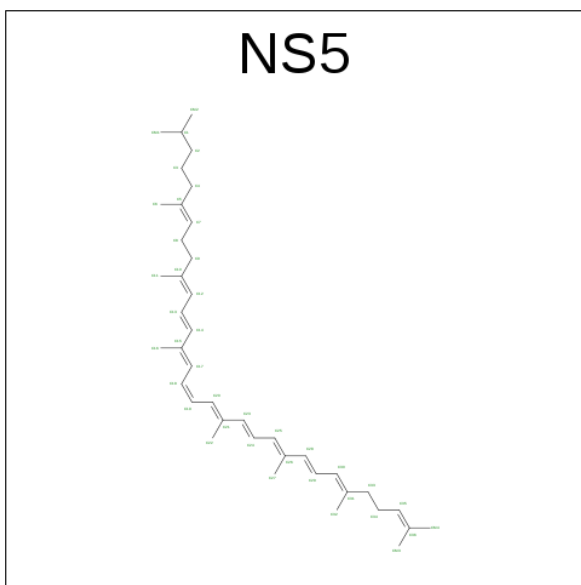
Mol	Chain	Residues	Atoms	ZeroOcc	AltConf
10	C	1	Total Fe 1 1	0	0

- Molecule 11 is MENAQUINONE-7 (three-letter code: MQ7) (formula: C₄₆H₆₄O₂).



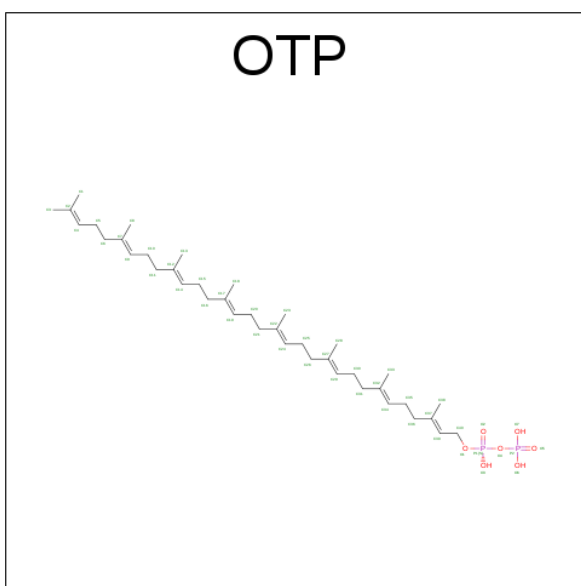
Mol	Chain	Residues	Atoms	ZeroOcc	AltConf
11	C	1	Total C O 48 46 2	0	0

- Molecule 12 is 15-cis-1,2-dihydroneurosporene (three-letter code: NS5) (formula: C₄₀H₆₀).



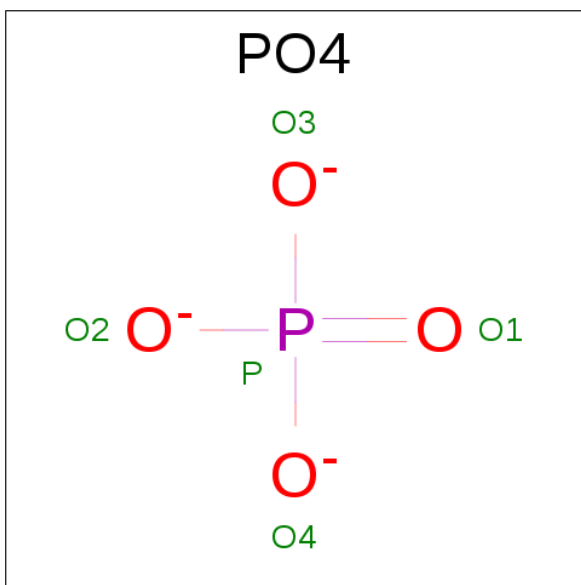
Mol	Chain	Residues	Atoms		ZeroOcc	AltConf
12	C	1	Total	C	0	0
			40	40		

- Molecule 13 is (2E,6E,10E,14E,18E,22E,26E)-3,7,11,15,19,23,27,31-OCTAMETHYLD OTRIACONTA-2,6,10,14,18,22,26,30-OCTAENYL TRIHYDROGEN DIPHOSPHATE (three-letter code: OTP) (formula: $C_{40}H_{68}O_7P_2$).



Mol	Chain	Residues	Atoms			ZeroOcc	AltConf
13	C	1	Total	C	O	0	0
			41	40	1		

- Molecule 14 is PHOSPHATE ION (three-letter code: PO4) (formula: O_4P).

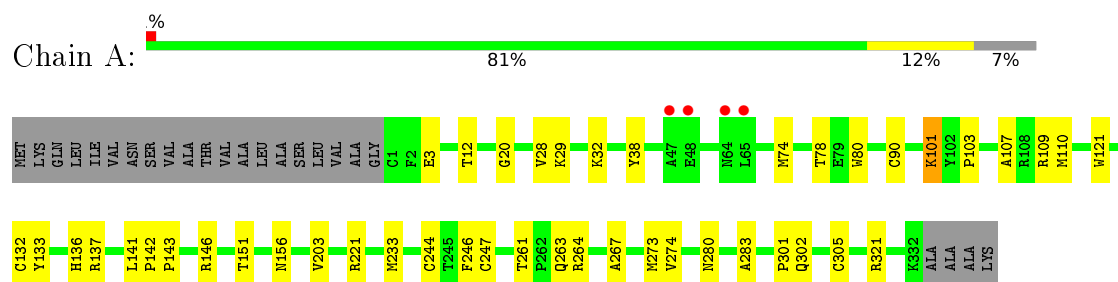


Mol	Chain	Residues	Atoms			ZeroOcc	AltConf
14	C	1	Total	O	P	0	0
			5	4	1		
14	C	1	Total	O	P	0	0
			5	4	1		

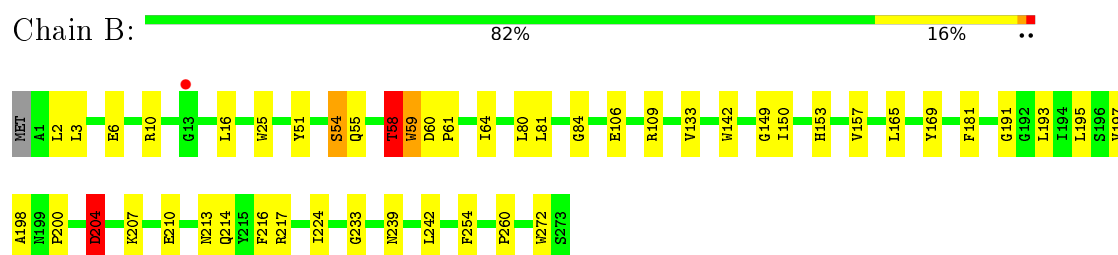
3 Residue-property plots

These plots are drawn for all protein, RNA and DNA chains in the entry. The first graphic for a chain summarises the proportions of errors displayed in the second graphic. The second graphic shows the sequence view annotated by issues in geometry and electron density. Residues are color-coded according to the number of geometric quality criteria for which they contain at least one outlier: green = 0, yellow = 1, orange = 2 and red = 3 or more. A red dot above a residue indicates a poor fit to the electron density ($RSRZ > 2$). Stretches of 2 or more consecutive residues without any outlier are shown as a green connector. Residues present in the sample, but not in the model, are shown in grey.

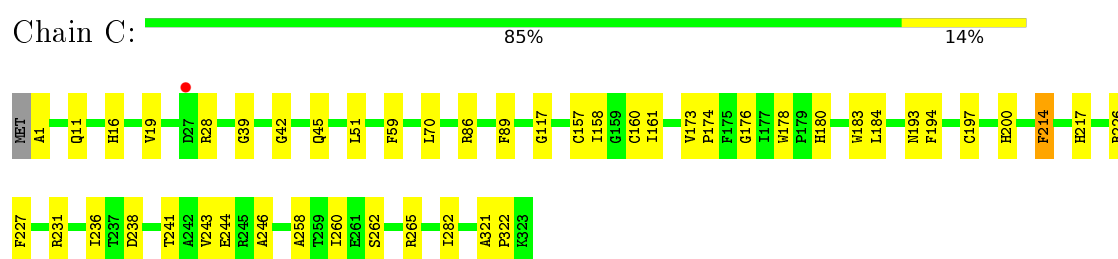
- Molecule 1: Photosynthetic reaction center cytochrome c subunit



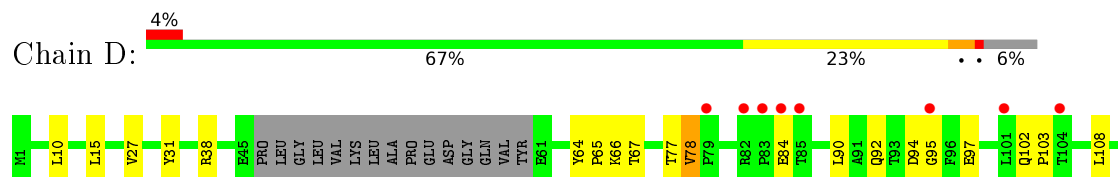
- Molecule 2: Reaction center protein L chain

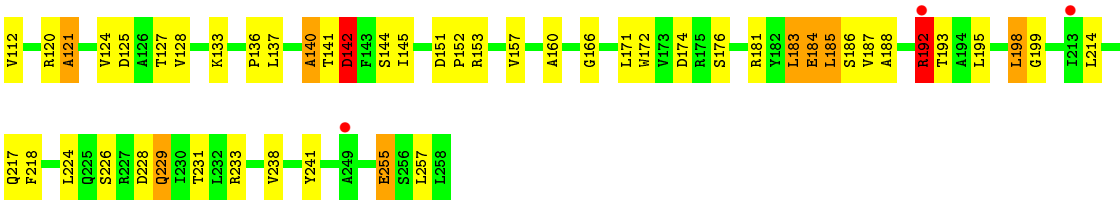


- Molecule 3: Reaction center protein M chain



- Molecule 4: Reaction center protein H chain





4 Data and refinement statistics

Property	Value	Source
Space group	P 21 21 21	Depositor
Cell constants a, b, c, α , β , γ	57.60Å 82.90Å 382.10Å 90.00° 90.00° 90.00°	Depositor
Resolution (Å)	50.50 – 3.60 50.50 – 3.60	Depositor EDS
% Data completeness (in resolution range)	99.4 (50.50-3.60) 99.5 (50.50-3.60)	Depositor EDS
R_{merge}	(Not available)	Depositor
R_{sym}	(Not available)	Depositor
$\langle I/\sigma(I) \rangle$ ¹	1.55 (at 3.57Å)	Xtriage
Refinement program	PHENIX (phenix.refine: 1.9_1692)	Depositor
R, R_{free}	0.242 , 0.280 0.242 , 0.280	Depositor DCC
R_{free} test set	1094 reflections (4.97%)	DCC
Wilson B-factor (Å ²)	73.9	Xtriage
Anisotropy	0.638	Xtriage
Bulk solvent k_{sol} (e/Å ³), B_{sol} (Å ²)	0.30 , 57.9	EDS
L-test for twinning ²	$\langle L \rangle = 0.43$, $\langle L^2 \rangle = 0.25$	Xtriage
Estimated twinning fraction	No twinning to report.	Xtriage
F_o, F_c correlation	0.88	EDS
Total number of atoms	9890	wwPDB-VP
Average B, all atoms (Å ²)	83.0	wwPDB-VP

Xtriage's analysis on translational NCS is as follows: *The largest off-origin peak in the Patterson function is 5.89% of the height of the origin peak. No significant pseudotranslation is detected.*

¹Intensities estimated from amplitudes.

²Theoretical values of $\langle |L| \rangle$, $\langle L^2 \rangle$ for acentric reflections are 0.5, 0.333 respectively for untwinned datasets, and 0.375, 0.2 for perfectly twinned datasets.

5 Model quality

5.1 Standard geometry

Bond lengths and bond angles in the following residue types are not validated in this section: BCL, MPG, BPB, PO4, DGA, FE2, MQ7, HEC, OTP, FME, NS5

The Z score for a bond length (or angle) is the number of standard deviations the observed value is removed from the expected value. A bond length (or angle) with $|Z| > 5$ is considered an outlier worth inspection. RMSZ is the root-mean-square of all Z scores of the bond lengths (or angles).

Mol	Chain	Bond lengths		Bond angles	
		RMSZ	# Z >5	RMSZ	# Z >5
1	A	0.28	0/2665	0.47	0/3633
2	B	0.29	0/2263	0.49	1/3089 (0.0%)
3	C	0.28	0/2650	0.46	0/3629
4	D	0.46	0/1804	0.79	8/2485 (0.3%)
All	All	0.32	0/9382	0.55	9/12836 (0.1%)

Chiral center outliers are detected by calculating the chiral volume of a chiral center and verifying if the center is modelled as a planar moiety or with the opposite hand. A planarity outlier is detected by checking planarity of atoms in a peptide group, atoms in a mainchain group or atoms of a sidechain that are expected to be planar.

Mol	Chain	#Chirality outliers	#Planarity outliers
2	B	0	1
4	D	0	6
All	All	0	7

There are no bond length outliers.

All (9) bond angle outliers are listed below:

Mol	Chain	Res	Type	Atoms	Z	Observed(°)	Ideal(°)
4	D	78	VAL	C-N-CD	-7.68	103.70	120.60
4	D	142	ASP	CB-CG-OD2	7.19	124.77	118.30
4	D	185	LEU	CB-CG-CD2	6.27	121.65	111.00
4	D	192	ARG	NE-CZ-NH2	-6.11	117.25	120.30
4	D	183	LEU	CA-CB-CG	5.79	128.63	115.30
4	D	185	LEU	CB-CG-CD1	-5.57	101.53	111.00
4	D	198	LEU	CA-CB-CG	-5.44	102.78	115.30
4	D	78	VAL	C-N-CA	5.41	144.71	122.00
2	B	204	ASP	N-CA-C	5.19	125.03	111.00

There are no chirality outliers.

All (7) planarity outliers are listed below:

Mol	Chain	Res	Type	Group
2	B	58	THR	Peptide
4	D	125	ASP	Peptide
4	D	140	ALA	Peptide
4	D	184	GLU	Peptide
4	D	192	ARG	Peptide
4	D	229	GLN	Peptide
4	D	255	GLU	Peptide

5.2 Too-close contacts

In the following table, the Non-H and H(model) columns list the number of non-hydrogen atoms and hydrogen atoms in the chain respectively. The H(added) column lists the number of hydrogen atoms added and optimized by MolProbity. The Clashes column lists the number of clashes within the asymmetric unit, whereas Symm-Clashes lists symmetry related clashes.

Mol	Chain	Non-H	H(model)	H(added)	Clashes	Symm-Clashes
1	A	2598	0	2576	40	0
2	B	2170	0	2100	43	0
3	C	2546	0	2430	40	0
4	D	1771	0	1656	68	0
5	A	172	0	128	22	0
6	A	37	0	58	2	0
7	B	197	0	218	6	0
7	C	66	0	74	1	0
8	B	65	0	74	1	0
8	C	61	0	63	4	0
9	B	50	0	80	3	0
9	C	17	0	31	1	0
10	C	1	0	0	0	0
11	C	48	0	64	0	0
12	C	40	0	60	4	0
13	C	41	0	65	1	0
14	C	10	0	0	0	0
All	All	9890	0	9677	194	0

The all-atom clashscore is defined as the number of clashes found per 1000 atoms (including hydrogen atoms). The all-atom clashscore for this structure is 10.

All (194) close contacts within the same asymmetric unit are listed below, sorted by their clash magnitude.

Atom-1	Atom-2	Interatomic distance (Å)	Clash overlap (Å)
4:D:187:VAL:HB	4:D:192:ARG:HD3	1.49	0.93
4:D:184:GLU:HG2	4:D:195:LEU:HA	1.57	0.86
4:D:187:VAL:HG12	4:D:192:ARG:HB2	1.56	0.85
2:B:214:GLN:NE2	3:C:19:VAL:O	2.15	0.79
4:D:192:ARG:CG	4:D:193:THR:HA	2.12	0.79
7:B:303:BCL:HMD2	7:C:401:BCL:HBB3	1.67	0.77
1:A:28:VAL:HG12	1:A:32:LYS:HE3	1.68	0.76
4:D:185:LEU:HD11	4:D:192:ARG:NH2	2.03	0.74
3:C:16:HIS:H	3:C:16:HIS:CD2	2.04	0.74
3:C:11:GLN:HE21	3:C:39:GLY:HA3	1.53	0.73
2:B:214:GLN:HG3	3:C:19:VAL:HB	1.70	0.73
4:D:192:ARG:HG2	4:D:193:THR:HA	1.72	0.71
4:D:187:VAL:HB	4:D:192:ARG:HH11	1.55	0.71
4:D:217:GLN:O	4:D:241:TYR:OH	2.06	0.69
3:C:262:SER:HA	3:C:265:ARG:HG3	1.72	0.69
7:B:301:BCL:H3C	3:C:184:LEU:HD21	1.73	0.68
4:D:184:GLU:CG	4:D:195:LEU:HA	2.24	0.68
4:D:136:PRO:HG3	4:D:172:TRP:CE2	2.28	0.67
4:D:226:SER:HB2	4:D:229:GLN:HB2	1.77	0.67
3:C:11:GLN:NE2	3:C:39:GLY:HA3	2.10	0.66
4:D:187:VAL:CB	4:D:192:ARG:HD3	2.23	0.66
4:D:192:ARG:HG3	4:D:193:THR:HA	1.75	0.66
4:D:174:ASP:OD2	4:D:181:ARG:NH2	2.29	0.65
3:C:157:CYS:HA	3:C:161:ILE:HB	1.80	0.63
2:B:6:GLU:OE2	2:B:10:ARG:NH1	2.32	0.62
3:C:238:ASP:N	3:C:238:ASP:OD1	2.32	0.62
4:D:192:ARG:NH1	4:D:218:PHE:HB3	2.15	0.62
1:A:90:CYS:C	1:A:101:LYS:HE3	2.20	0.62
2:B:80:LEU:HA	2:B:84:GLY:HA3	1.80	0.62
4:D:166:GLY:HA3	4:D:186:SER:O	1.99	0.62
7:B:303:BCL:HMA1	7:B:303:BCL:H142	1.82	0.62
2:B:239:ASN:HA	2:B:242:LEU:HB2	1.81	0.61
2:B:55:GLN:HE22	2:B:81:LEU:HB3	1.65	0.61
4:D:187:VAL:HB	4:D:192:ARG:CD	2.27	0.61
4:D:183:LEU:O	4:D:184:GLU:HG3	2.01	0.61
4:D:136:PRO:HG3	4:D:172:TRP:CZ2	2.36	0.60
3:C:243:VAL:HG11	3:C:260:ILE:HB	1.83	0.60
1:A:29:LYS:HA	1:A:32:LYS:HD2	1.83	0.60
3:C:265:ARG:NH1	4:D:31:TYR:OH	2.33	0.60
3:C:241:THR:HA	3:C:244:GLU:HG3	1.84	0.59
3:C:226:ARG:NH1	4:D:199:GLY:O	2.35	0.59
4:D:192:ARG:HH22	4:D:218:PHE:HD1	1.50	0.58

Continued on next page...

Continued from previous page...

Atom-1	Atom-2	Interatomic distance (Å)	Clash overlap (Å)
4:D:226:SER:CB	4:D:229:GLN:HB2	2.34	0.58
4:D:133:LYS:HE3	4:D:176:SER:HB2	1.86	0.58
2:B:213:ASN:O	2:B:217:ARG:HG2	2.04	0.58
4:D:120:ARG:HD2	4:D:121:ALA:H	1.68	0.57
4:D:124:VAL:HA	4:D:231:THR:HA	1.85	0.57
4:D:137:LEU:HA	4:D:140:ALA:HB3	1.87	0.56
7:B:301:BCL:H193	9:C:407:MPG:H112	1.86	0.56
2:B:55:GLN:HE22	2:B:81:LEU:HD13	1.70	0.56
1:A:80:TRP:HE3	1:A:132:CYS:HG	1.53	0.56
1:A:233:MET:HB3	5:A:403:HEC:C3B	2.35	0.56
4:D:94:ASP:OD1	4:D:95:GLY:N	2.37	0.56
1:A:274:VAL:HG21	5:A:404:HEC:HAB	1.88	0.55
4:D:66:LYS:HG2	4:D:67:THR:N	2.20	0.55
1:A:136:HIS:NE2	5:A:402:HEC:NB	2.55	0.55
4:D:10:LEU:HD21	4:D:15:LEU:HD21	1.88	0.55
2:B:197:VAL:HG13	2:B:207:LYS:HB2	1.89	0.55
2:B:16:LEU:HD13	2:B:106:GLU:HG2	1.90	0.54
4:D:152:PRO:HG2	4:D:171:LEU:HD23	1.88	0.54
3:C:117:GLY:HA3	12:C:405:NS5:H92	1.90	0.54
2:B:2:LEU:HG	2:B:10:ARG:NH1	2.23	0.54
4:D:92:GLN:OE1	4:D:92:GLN:N	2.40	0.54
2:B:61:PRO:HA	2:B:64:ILE:HD12	1.90	0.53
1:A:132:CYS:HA	5:A:402:HEC:HHC	1.91	0.53
2:B:224:ILE:HG22	9:B:306:MPG:H212	1.90	0.53
3:C:176:GLY:O	3:C:180:HIS:ND1	2.42	0.53
2:B:193:LEU:HD22	2:B:216:PHE:HE2	1.74	0.53
2:B:272:TRP:HB3	3:C:86:ARG:HD2	1.90	0.53
2:B:55:GLN:OE1	2:B:81:LEU:HD22	2.10	0.52
4:D:160:ALA:HB3	4:D:214:LEU:HD23	1.90	0.52
4:D:108:LEU:HB3	4:D:241:TYR:CE1	2.44	0.52
4:D:90:LEU:HD11	4:D:112:VAL:HB	1.91	0.52
2:B:200:PRO:HG2	2:B:204:ASP:OD1	2.10	0.52
5:A:404:HEC:HHA	5:A:404:HEC:HBD1	1.91	0.52
2:B:2:LEU:HG	2:B:10:ARG:HH11	1.74	0.51
3:C:258:ALA:HB1	3:C:262:SER:OG	2.09	0.51
3:C:160:CYS:HB3	12:C:405:NS5:H82	1.92	0.51
1:A:143:PRO:O	1:A:156:ASN:ND2	2.43	0.51
1:A:301:PRO:HG2	5:A:402:HEC:HBD1	1.91	0.51
4:D:185:LEU:HD11	4:D:192:ARG:CZ	2.40	0.51
1:A:267:ALA:CB	5:A:403:HEC:HAC	2.41	0.51
2:B:214:GLN:CG	3:C:19:VAL:HB	2.38	0.51

Continued on next page...

Continued from previous page...

Atom-1	Atom-2	Interatomic distance (Å)	Clash overlap (Å)
4:D:102:GLN:HG3	4:D:103:PRO:HD2	1.93	0.51
1:A:274:VAL:HG22	5:A:404:HEC:HMC2	1.93	0.50
2:B:3:LEU:HB2	2:B:6:GLU:HB2	1.94	0.50
2:B:210:GLU:OE2	4:D:128:VAL:N	2.45	0.50
3:C:70:LEU:HD21	12:C:405:NS5:H29	1.93	0.50
1:A:247:CYS:HA	1:A:261:THR:OG1	2.12	0.50
3:C:39:GLY:HA2	3:C:42:GLY:O	2.12	0.50
2:B:149:GLY:O	2:B:153:HIS:ND1	2.45	0.49
2:B:133:VAL:HA	2:B:142:TRP:HZ3	1.77	0.49
4:D:38:ARG:O	4:D:78:VAL:HG23	2.12	0.49
2:B:233:GLY:HA3	3:C:214:PHE:CE2	2.48	0.49
1:A:247:CYS:HB3	1:A:264:ARG:HB2	1.95	0.49
2:B:150:ILE:O	7:B:303:BCL:HED1	2.13	0.48
3:C:197:CYS:O	3:C:200:HIS:HB3	2.13	0.48
8:C:402:BPB:HBBB	8:C:402:BPB:HHC	1.95	0.48
4:D:157:VAL:HG21	4:D:185:LEU:HD22	1.94	0.48
4:D:255:GLU:OE1	4:D:255:GLU:N	2.47	0.48
3:C:243:VAL:HA	3:C:246:ALA:HB3	1.94	0.48
3:C:59:PHE:CD1	8:C:402:BPB:H4	2.49	0.48
8:B:304:BPB:HBBB	8:B:304:BPB:HHC	1.95	0.48
9:B:305:MPG:H21C	3:C:1:ALA:HA	1.94	0.48
4:D:187:VAL:H	4:D:192:ARG:HB3	1.79	0.48
1:A:305:CYS:HA	5:A:404:HEC:HHC	1.96	0.47
2:B:58:THR:O	2:B:59:TRP:HD1	1.97	0.47
4:D:192:ARG:NH2	4:D:218:PHE:HD1	2.11	0.47
4:D:136:PRO:HA	4:D:172:TRP:CD1	2.49	0.47
1:A:3:GLU:O	2:B:254:PHE:HA	2.14	0.47
6:A:405:DGA:HG11	6:A:405:DGA:HA22	1.72	0.47
2:B:210:GLU:O	2:B:214:GLN:HB2	2.15	0.47
3:C:227:PHE:HB3	3:C:241:THR:HG23	1.96	0.47
1:A:203:VAL:HG12	1:A:221:ARG:NH2	2.30	0.47
2:B:51:TYR:O	2:B:54:SER:HB3	2.15	0.47
1:A:121:TRP:CG	1:A:273:MET:HG3	2.50	0.46
2:B:60:ASP:OD1	2:B:61:PRO:HD2	2.16	0.46
3:C:231:ARG:HH22	4:D:133:LYS:HD3	1.80	0.46
4:D:151:ASP:CG	4:D:153:ARG:HH11	2.19	0.46
4:D:187:VAL:HG22	4:D:188:ALA:O	2.16	0.46
1:A:80:TRP:CD1	1:A:133:TYR:HB2	2.51	0.46
4:D:185:LEU:C	4:D:185:LEU:HD12	2.36	0.46
3:C:158:ILE:HD12	3:C:173:VAL:HG21	1.98	0.46
4:D:187:VAL:N	4:D:192:ARG:HD3	2.30	0.46

Continued on next page...

Continued from previous page...

Atom-1	Atom-2	Interatomic distance (Å)	Clash overlap (Å)
5:A:404:HEC:CBB	5:A:404:HEC:HMB1	2.45	0.45
2:B:198:ALA:C	2:B:200:PRO:HD3	2.37	0.45
3:C:11:GLN:NE2	3:C:39:GLY:CA	2.77	0.45
2:B:191:GLY:O	2:B:195:LEU:HG	2.16	0.45
2:B:181:PHE:HB3	8:C:402:BPB:HBBA	1.97	0.45
9:B:305:MPG:H42C	9:B:305:MPG:HX32	1.54	0.45
12:C:405:NS5:H18	12:C:405:NS5:H161	1.73	0.45
4:D:171:LEU:O	4:D:171:LEU:HD12	2.15	0.45
1:A:74:MET:HB3	5:A:401:HEC:C3B	2.47	0.45
2:B:217:ARG:HH22	3:C:45:GLN:HE21	1.64	0.45
4:D:183:LEU:H	4:D:198:LEU:HD13	1.82	0.45
1:A:146:ARG:HA	1:A:146:ARG:HD2	1.68	0.45
1:A:38:TYR:HE2	1:A:321:ARG:HG2	1.82	0.45
2:B:58:THR:O	2:B:59:TRP:CD1	2.70	0.45
3:C:214:PHE:HE1	3:C:217:HIS:HD2	1.65	0.45
1:A:146:ARG:NH2	1:A:151:THR:H	2.14	0.45
4:D:64:TYR:HD1	4:D:65:PRO:O	1.99	0.45
4:D:66:LYS:H	4:D:78:VAL:HG12	1.82	0.45
1:A:109:ARG:NH2	1:A:280:ASN:O	2.47	0.45
1:A:305:CYS:SG	5:A:404:HEC:CAB	3.06	0.44
4:D:108:LEU:HB3	4:D:241:TYR:HE1	1.82	0.44
1:A:133:TYR:CE2	1:A:137:ARG:HD3	2.53	0.44
1:A:110:MET:HG3	5:A:402:HEC:NA	2.33	0.44
1:A:12:THR:HG23	1:A:20:GLY:HA2	1.98	0.44
1:A:110:MET:HB3	5:A:402:HEC:C3B	2.47	0.43
1:A:283:ALA:HB2	1:A:302:GLN:OE1	2.19	0.43
1:A:132:CYS:SG	5:A:402:HEC:CAB	3.07	0.43
4:D:187:VAL:H	4:D:192:ARG:CB	2.31	0.43
7:B:302:BCL:H41	7:B:302:BCL:H61	1.82	0.43
1:A:305:CYS:SG	5:A:404:HEC:HBB3	2.58	0.43
5:A:401:HEC:HMB1	5:A:401:HEC:CBB	2.48	0.43
4:D:27:VAL:O	4:D:31:TYR:HB3	2.19	0.43
2:B:55:GLN:NE2	2:B:81:LEU:HB3	2.30	0.43
3:C:89:PHE:HB3	3:C:178:TRP:CD1	2.53	0.43
4:D:142:ASP:OD1	4:D:142:ASP:N	2.50	0.43
1:A:244:CYS:SG	5:A:403:HEC:CAB	3.06	0.43
1:A:246:PHE:CZ	1:A:263:GLN:HG2	2.54	0.43
4:D:66:LYS:H	4:D:78:VAL:CG1	2.31	0.43
4:D:127:THR:HG22	4:D:128:VAL:N	2.34	0.42
2:B:109:ARG:HH21	4:D:257:LEU:HD11	1.84	0.42
2:B:10:ARG:HH21	2:B:25:TRP:CB	2.32	0.42

Continued on next page...

Continued from previous page...

Atom-1	Atom-2	Interatomic distance (Å)	Clash overlap (Å)
3:C:1:ALA:C	3:C:226:ARG:HH22	2.22	0.42
4:D:195:LEU:CB	4:D:238:VAL:HG11	2.49	0.42
1:A:90:CYS:SG	1:A:103:PRO:HB2	2.59	0.42
1:A:101:LYS:HB2	1:A:103:PRO:HD2	2.02	0.42
2:B:153:HIS:O	2:B:157:VAL:HG23	2.19	0.42
4:D:198:LEU:HD12	4:D:198:LEU:HA	1.52	0.42
1:A:141:LEU:HD12	1:A:142:PRO:HD2	2.02	0.42
2:B:181:PHE:CD2	8:C:402:BPB:HBB	2.55	0.42
3:C:173:VAL:HA	3:C:174:PRO:HD3	1.86	0.42
2:B:214:GLN:HE22	3:C:28:ARG:NH2	2.17	0.42
1:A:273:MET:HB3	1:A:273:MET:HE2	1.95	0.41
4:D:67:THR:HG23	4:D:77:THR:HG22	2.01	0.41
6:A:405:DGA:HA31	6:A:405:DGA:HB31	2.02	0.41
3:C:173:VAL:HG22	3:C:183:TRP:CE2	2.55	0.41
4:D:224:LEU:HA	4:D:224:LEU:HD12	1.92	0.41
4:D:120:ARG:N	4:D:233:ARG:HE	2.17	0.41
2:B:169:TYR:CD1	2:B:260:PRO:HG3	2.55	0.41
1:A:107:ALA:CB	5:A:401:HEC:HAC	2.51	0.41
13:C:406:OTP:H81	13:C:406:OTP:H51	1.76	0.41
4:D:120:ARG:HD2	4:D:121:ALA:N	2.35	0.41
5:A:403:HEC:CBB	5:A:403:HEC:HMB1	2.51	0.41
5:A:403:HEC:CBC	5:A:403:HEC:HMC1	2.50	0.41
3:C:282:ILE:HA	3:C:282:ILE:HD13	1.92	0.41
2:B:60:ASP:HA	2:B:61:PRO:HD2	1.84	0.41
4:D:172:TRP:CZ2	4:D:184:GLU:OE1	2.74	0.41
3:C:321:ALA:HA	3:C:322:PRO:HD3	1.91	0.40
1:A:78:THR:OG1	5:A:401:HEC:HAB	2.21	0.40
4:D:144:SER:OG	4:D:145:ILE:N	2.53	0.40
3:C:236:ILE:HG12	3:C:260:ILE:HG23	2.04	0.40

There are no symmetry-related clashes.

5.3 Torsion angles ⓘ

5.3.1 Protein backbone ⓘ

In the following table, the Percentiles column shows the percent Ramachandran outliers of the chain as a percentile score with respect to all X-ray entries followed by that with respect to entries of similar resolution.

The Analysed column shows the number of residues for which the backbone conformation was analysed, and the total number of residues.

Mol	Chain	Analysed	Favoured	Allowed	Outliers	Percentiles	
1	A	330/356 (93%)	313 (95%)	17 (5%)	0	100	100
2	B	273/274 (100%)	257 (94%)	12 (4%)	4 (2%)	13	57
3	C	321/324 (99%)	301 (94%)	18 (6%)	2 (1%)	30	74
4	D	239/258 (93%)	213 (89%)	22 (9%)	4 (2%)	11	55
All	All	1163/1212 (96%)	1084 (93%)	69 (6%)	10 (1%)	21	67

All (10) Ramachandran outliers are listed below:

Mol	Chain	Res	Type
2	B	59	TRP
2	B	204	ASP
4	D	97	GLU
4	D	141	THR
4	D	84	GLU
4	D	121	ALA
2	B	58	THR
2	B	165	LEU
3	C	193	ASN
3	C	51	LEU

5.3.2 Protein sidechains ⓘ

In the following table, the Percentiles column shows the percent sidechain outliers of the chain as a percentile score with respect to all X-ray entries followed by that with respect to entries of similar resolution.

The Analysed column shows the number of residues for which the sidechain conformation was analysed, and the total number of residues.

Mol	Chain	Analysed	Rotameric	Outliers	Percentiles	
1	A	280/297 (94%)	279 (100%)	1 (0%)	93	98
2	B	218/219 (100%)	217 (100%)	1 (0%)	92	97
3	C	247/250 (99%)	245 (99%)	2 (1%)	86	95
4	D	167/212 (79%)	165 (99%)	2 (1%)	78	92
All	All	912/978 (93%)	906 (99%)	6 (1%)	88	96

All (6) residues with a non-rotameric sidechain are listed below:

Mol	Chain	Res	Type
1	A	101	LYS

Continued on next page...

Continued from previous page...

Mol	Chain	Res	Type
2	B	54	SER
3	C	194	PHE
3	C	214	PHE
4	D	142	ASP
4	D	228	ASP

Some sidechains can be flipped to improve hydrogen bonding and reduce clashes. All (3) such sidechains are listed below:

Mol	Chain	Res	Type
3	C	11	GLN
3	C	16	HIS
3	C	45	GLN

5.3.3 RNA ⓘ

There are no RNA molecules in this entry.

5.4 Non-standard residues in protein, DNA, RNA chains ⓘ

1 non-standard protein/DNA/RNA residue is modelled in this entry.

In the following table, the Counts columns list the number of bonds (or angles) for which Mogul statistics could be retrieved, the number of bonds (or angles) that are observed in the model and the number of bonds (or angles) that are defined in the chemical component dictionary. The Link column lists molecule types, if any, to which the group is linked. The Z score for a bond length (or angle) is the number of standard deviations the observed value is removed from the expected value. A bond length (or angle) with $|Z| > 2$ is considered an outlier worth inspection. RMSZ is the root-mean-square of all Z scores of the bond lengths (or angles).

Mol	Type	Chain	Res	Link	Bond lengths			Bond angles		
					Counts	RMSZ	$\# Z > 2$	Counts	RMSZ	$\# Z > 2$
4	FME	D	1	4	8,9,10	0.84	0	5,9,11	0.87	0

In the following table, the Chirals column lists the number of chiral outliers, the number of chiral centers analysed, the number of these observed in the model and the number defined in the chemical component dictionary. Similar counts are reported in the Torsion and Rings columns. '-' means no outliers of that kind were identified.

Mol	Type	Chain	Res	Link	Chirals	Torsions	Rings
4	FME	D	1	4	-	0/6/9/11	0/0/0/0

There are no bond length outliers.

There are no bond angle outliers.

There are no chirality outliers.

There are no torsion outliers.

There are no ring outliers.

No monomer is involved in short contacts.

5.5 Carbohydrates [i](#)

There are no carbohydrates in this entry.

5.6 Ligand geometry [i](#)

Of 20 ligands modelled in this entry, 1 is monoatomic - leaving 19 for Mogul analysis.

In the following table, the Counts columns list the number of bonds (or angles) for which Mogul statistics could be retrieved, the number of bonds (or angles) that are observed in the model and the number of bonds (or angles) that are defined in the chemical component dictionary. The Link column lists molecule types, if any, to which the group is linked. The Z score for a bond length (or angle) is the number of standard deviations the observed value is removed from the expected value. A bond length (or angle) with $|Z| > 2$ is considered an outlier worth inspection. RMSZ is the root-mean-square of all Z scores of the bond lengths (or angles).

Mol	Type	Chain	Res	Link	Bond lengths			Bond angles		
					Counts	RMSZ	$\# Z > 2$	Counts	RMSZ	$\# Z > 2$
5	HEC	A	401	1	24,50,50	2.53	6 (25%)	19,82,82	1.93	6 (31%)
5	HEC	A	402	1	24,50,50	2.46	5 (20%)	19,82,82	1.90	6 (31%)
5	HEC	A	403	1	24,50,50	2.52	6 (25%)	19,82,82	1.72	4 (21%)
5	HEC	A	404	1	24,50,50	2.47	6 (25%)	19,82,82	1.68	3 (15%)
6	DGA	A	405	-	36,36,43	1.21	3 (8%)	38,38,45	3.09	6 (15%)
7	BCL	B	301	-	54,73,74	1.18	3 (5%)	53,113,115	1.19	4 (7%)
7	BCL	B	302	-	55,74,74	1.15	3 (5%)	55,115,115	1.25	7 (12%)
7	BCL	B	303	-	55,74,74	1.12	2 (3%)	55,115,115	1.28	7 (12%)
8	BPB	B	304	-	62,70,70	1.22	4 (6%)	64,101,101	1.62	8 (12%)
9	MPG	B	305	-	23,24,24	1.26	1 (4%)	20,25,25	1.88	2 (10%)
9	MPG	B	306	-	23,24,24	1.27	1 (4%)	20,25,25	1.57	2 (10%)
7	BCL	C	401	-	55,74,74	1.28	3 (5%)	55,115,115	1.31	6 (10%)
8	BPB	C	402	-	58,66,70	1.38	4 (6%)	58,96,101	1.59	9 (15%)
11	MQ7	C	404	-	49,49,49	1.61	10 (20%)	63,63,63	1.71	14 (22%)

Mol	Type	Chain	Res	Link	Bond lengths			Bond angles		
					Counts	RMSZ	# Z > 2	Counts	RMSZ	# Z > 2
12	NS5	C	405	-	39,39,39	2.28	17 (43%)	44,46,46	2.43	15 (34%)
13	OTP	C	406	-	40,40,48	0.73	0	47,47,61	2.02	18 (38%)
9	MPG	C	407	-	16,16,24	0.78	0	15,15,25	0.76	0
14	PO4	C	408	-	4,4,4	0.61	0	6,6,6	0.23	0
14	PO4	C	409	-	4,4,4	0.65	0	6,6,6	0.23	0

In the following table, the Chirals column lists the number of chiral outliers, the number of chiral centers analysed, the number of these observed in the model and the number defined in the chemical component dictionary. Similar counts are reported in the Torsion and Rings columns. '-' means no outliers of that kind were identified.

Mol	Type	Chain	Res	Link	Chirals	Torsions	Rings
5	HEC	A	401	1	-	0/6/54/54	0/0/8/8
5	HEC	A	402	1	-	0/6/54/54	0/0/8/8
5	HEC	A	403	1	-	0/6/54/54	0/0/8/8
5	HEC	A	404	1	-	0/6/54/54	0/0/8/8
6	DGA	A	405	-	-	0/37/37/45	0/0/0/0
7	BCL	B	301	-	-	0/36/136/137	0/0/9/9
7	BCL	B	302	-	-	0/37/137/137	0/0/9/9
7	BCL	B	303	-	-	0/37/137/137	0/0/9/9
8	BPB	B	304	-	-	0/46/105/105	0/1/6/6
9	MPG	B	305	-	-	0/25/25/25	0/0/0/0
9	MPG	B	306	-	-	0/25/25/25	0/0/0/0
7	BCL	C	401	-	-	0/37/137/137	0/0/9/9
8	BPB	C	402	-	-	0/42/101/105	0/1/6/6
11	MQ7	C	404	-	-	0/41/61/61	0/2/2/2
12	NS5	C	405	-	-	0/43/43/43	0/0/0/0
13	OTP	C	406	-	-	0/45/45/55	0/0/0/0
9	MPG	C	407	-	-	0/14/14/25	0/0/0/0
14	PO4	C	408	-	-	0/0/0/0	0/0/0/0
14	PO4	C	409	-	-	0/0/0/0	0/0/0/0

All (74) bond length outliers are listed below:

Mol	Chain	Res	Type	Atoms	Z	Observed(Å)	Ideal(Å)
5	A	403	HEC	C3C-C2C	-5.93	1.34	1.40
5	A	401	HEC	C3C-C2C	-5.90	1.34	1.40
5	A	404	HEC	C3C-C2C	-5.79	1.34	1.40
5	A	401	HEC	C3B-C2B	-5.70	1.34	1.40
5	A	402	HEC	C3B-C2B	-5.49	1.35	1.40
5	A	402	HEC	C3C-C2C	-5.43	1.35	1.40
5	A	403	HEC	C3B-C2B	-5.23	1.35	1.40

Continued on next page...

Continued from previous page...

Mol	Chain	Res	Type	Atoms	Z	Observed(Å)	Ideal(Å)
5	A	404	HEC	C3B-C2B	-5.19	1.35	1.40
5	A	401	HEC	CBC-CAC	-3.87	1.34	1.49
5	A	403	HEC	CBC-CAC	-3.85	1.34	1.49
5	A	402	HEC	CBB-CAB	-3.84	1.34	1.49
5	A	401	HEC	CBB-CAB	-3.82	1.34	1.49
5	A	404	HEC	CBC-CAC	-3.81	1.34	1.49
5	A	402	HEC	CBC-CAC	-3.79	1.34	1.49
5	A	403	HEC	CBB-CAB	-3.76	1.34	1.49
5	A	404	HEC	CBB-CAB	-3.50	1.35	1.49
12	C	405	NS5	C35-C36	2.06	1.38	1.32
11	C	404	MQ7	C11-C3	2.11	1.55	1.51
5	A	403	HEC	CAA-C2A	2.13	1.55	1.52
8	B	304	BPB	CHD-C1D	2.14	1.43	1.38
11	C	404	MQ7	C32-C33	2.17	1.38	1.32
5	A	401	HEC	CAA-C2A	2.17	1.55	1.52
11	C	404	MQ7	C22-C23	2.18	1.38	1.32
12	C	405	NS5	C29-C28	2.20	1.39	1.34
8	C	402	BPB	C4C-C3C	2.20	1.50	1.45
8	B	304	BPB	C4C-C3C	2.21	1.50	1.45
12	C	405	NS5	C33-C31	2.23	1.56	1.51
8	C	402	BPB	CHD-C1D	2.24	1.43	1.38
11	C	404	MQ7	C12-C13	2.26	1.38	1.32
5	A	404	HEC	CAA-C2A	2.27	1.55	1.52
11	C	404	MQ7	C27-C28	2.30	1.38	1.32
11	C	404	MQ7	C17-C18	2.30	1.38	1.32
7	C	401	BCL	OBD-CAD	2.37	1.25	1.22
7	B	302	BCL	OBD-CAD	2.42	1.26	1.22
7	B	301	BCL	OBD-CAD	2.49	1.26	1.22
12	C	405	NS5	C7-C5	2.50	1.39	1.32
12	C	405	NS5	C13-C14	2.56	1.40	1.34
11	C	404	MQ7	C20-C18	2.56	1.57	1.51
12	C	405	NS5	C4-C5	2.73	1.57	1.51
12	C	405	NS5	C20-C21	2.97	1.39	1.35
12	C	405	NS5	C12-C10	3.13	1.37	1.34
12	C	405	NS5	C13-C12	3.13	1.52	1.43
12	C	405	NS5	C28-C26	3.26	1.53	1.45
6	A	405	DGA	CG1-CG2	3.29	1.58	1.50
12	C	405	NS5	C23-C21	3.37	1.53	1.45
6	A	405	DGA	OG2-CB1	3.40	1.44	1.34
12	C	405	NS5	C24-C25	3.41	1.53	1.43
12	C	405	NS5	C29-C30	3.44	1.53	1.43
12	C	405	NS5	C18-C17	3.53	1.53	1.43

Continued on next page...

Continued from previous page...

Mol	Chain	Res	Type	Atoms	Z	Observed(Å)	Ideal(Å)
6	A	405	DGA	OG1-CA1	3.66	1.44	1.33
11	C	404	MQ7	C10-C1	3.71	1.55	1.48
7	B	301	BCL	CHB-C4A	3.72	1.38	1.33
7	B	303	BCL	CHB-C4A	3.73	1.38	1.33
8	B	304	BPB	C3B-C4B	3.82	1.46	1.41
11	C	404	MQ7	C5-C4	3.94	1.56	1.48
7	C	401	BCL	CHB-C4A	3.97	1.38	1.33
12	C	405	NS5	C19-C20	4.01	1.55	1.43
7	B	302	BCL	CHB-C4A	4.02	1.38	1.33
8	C	402	BPB	C3B-C4B	4.09	1.47	1.41
12	C	405	NS5	C14-C15	4.10	1.55	1.45
12	C	405	NS5	C30-C31	4.63	1.39	1.34
9	B	306	MPG	O1-CX3	4.77	1.43	1.33
9	B	305	MPG	O1-CX3	4.83	1.43	1.33
5	A	402	HEC	C3D-C2D	5.36	1.53	1.37
5	A	401	HEC	C3D-C2D	5.38	1.53	1.37
5	A	403	HEC	C3D-C2D	5.40	1.53	1.37
7	B	302	BCL	CHC-C1C	5.47	1.40	1.33
5	A	404	HEC	C3D-C2D	5.47	1.53	1.37
11	C	404	MQ7	C3-C2	5.58	1.48	1.35
7	B	303	BCL	CHC-C1C	5.63	1.41	1.33
7	B	301	BCL	CHC-C1C	5.82	1.41	1.33
8	B	304	BPB	CAC-C3C	6.09	1.40	1.33
7	C	401	BCL	CHC-C1C	6.75	1.42	1.33
8	C	402	BPB	CAC-C3C	7.09	1.41	1.33

All (117) bond angle outliers are listed below:

Mol	Chain	Res	Type	Atoms	Z	Observed(°)	Ideal(°)
6	A	405	DGA	OG2-CG2-CG3	-13.22	78.07	107.89
6	A	405	DGA	OG2-CG2-CG1	-9.78	83.73	105.90
12	C	405	NS5	C29-C30-C31	-7.55	118.42	127.69
12	C	405	NS5	C18-C17-C15	-6.47	117.81	127.22
8	B	304	BPB	C2C-C3C-C4C	-6.15	101.66	107.24
12	C	405	NS5	C19-C20-C21	-5.33	119.47	127.22
12	C	405	NS5	C13-C12-C10	-5.15	121.36	127.69
8	C	402	BPB	C2C-C3C-C4C	-4.69	102.99	107.24
8	B	304	BPB	CBD-CHA-C4D	-4.41	103.57	108.54
8	C	402	BPB	CBD-CHA-C4D	-4.08	103.94	108.54
13	C	406	OTP	C38-C37-C39	-4.05	115.73	123.58
7	B	303	BCL	CMB-C2B-C1B	-3.83	121.80	128.31
5	A	401	HEC	CBD-CAD-C3D	-3.80	105.82	112.49

Continued on next page...

Continued from previous page...

Mol	Chain	Res	Type	Atoms	Z	Observed(°)	Ideal(°)
7	C	401	BCL	CMB-C2B-C1B	-3.76	121.92	128.31
11	C	404	MQ7	C31-C32-C33	-3.62	119.77	127.75
13	C	406	OTP	C15-C14-C12	-3.58	119.84	127.75
5	A	404	HEC	CMC-C2C-C1C	-3.53	122.31	128.31
11	C	404	MQ7	C26-C27-C28	-3.48	120.06	127.75
7	B	302	BCL	CMB-C2B-C1B	-3.42	122.50	128.31
11	C	404	MQ7	C16-C17-C18	-3.38	120.29	127.75
7	B	302	BCL	OBD-CAD-CBD	-3.38	120.84	125.94
5	A	403	HEC	CMC-C2C-C1C	-3.37	122.59	128.31
8	B	304	BPB	CBC-CAC-C3C	-3.34	119.03	126.97
5	A	402	HEC	CBA-CAA-C2A	-3.25	106.77	112.47
7	B	301	BCL	OBD-CAD-CBD	-3.23	121.06	125.94
5	A	401	HEC	CMC-C2C-C1C	-3.23	122.82	128.31
5	A	402	HEC	CMB-C2B-C1B	-3.21	122.86	128.31
7	C	401	BCL	CHA-C1A-NA	-3.20	118.22	126.21
5	A	401	HEC	CMB-C2B-C1B	-3.19	122.89	128.31
7	B	303	BCL	OBD-CAD-CBD	-3.15	121.18	125.94
7	C	401	BCL	OBD-CAD-CBD	-3.11	121.24	125.94
12	C	405	NS5	C24-C25-C26	-3.11	122.70	127.22
11	C	404	MQ7	C11-C12-C13	-3.09	121.44	126.70
11	C	404	MQ7	C21-C22-C23	-3.08	120.96	127.75
13	C	406	OTP	C10-C9-C7	-3.03	121.08	127.75
7	B	301	BCL	CMB-C2B-C1B	-2.99	123.23	128.31
5	A	402	HEC	CMC-C2C-C1C	-2.91	123.35	128.31
7	B	302	BCL	CHA-C1A-NA	-2.88	119.02	126.21
5	A	403	HEC	CMB-C2B-C1B	-2.86	123.44	128.31
13	C	406	OTP	C18-C17-C19	-2.86	118.04	123.58
5	A	402	HEC	CBD-CAD-C3D	-2.76	107.64	112.49
7	B	301	BCL	CHA-C1A-NA	-2.74	119.35	126.21
8	B	304	BPB	CHD-C1D-ND	-2.73	119.71	124.67
9	B	305	MPG	O1-CX3-O4	-2.73	118.65	124.08
8	C	402	BPB	CHD-C1D-ND	-2.68	119.81	124.67
11	C	404	MQ7	C36-C37-C38	-2.63	121.94	127.75
7	B	303	BCL	CHA-C1A-NA	-2.58	119.77	126.21
13	C	406	OTP	C13-C12-C14	-2.46	118.81	123.58
5	A	401	HEC	CAA-CBA-CGA	-2.45	108.01	112.78
13	C	406	OTP	C30-C29-C27	-2.40	122.46	127.75
12	C	405	NS5	C13-C14-C15	-2.35	119.45	126.34
13	C	406	OTP	C33-C32-C34	-2.26	119.21	123.58
7	B	303	BCL	OBB-CAB-CBB	-2.25	114.76	120.14
13	C	406	OTP	C25-C24-C22	-2.19	122.91	127.75
9	B	306	MPG	O1-CX3-O4	-2.19	119.72	124.08

Continued on next page...

Continued from previous page...

Mol	Chain	Res	Type	Atoms	Z	Observed(°)	Ideal(°)
11	C	404	MQ7	C19-C18-C17	-2.16	119.40	123.58
12	C	405	NS5	C16-C15-C17	-2.14	119.78	122.89
8	B	304	BPB	C4-C3-C5	-2.11	112.16	115.37
12	C	405	NS5	C9-C8-C7	-2.11	106.08	111.61
8	C	402	BPB	CBC-CAC-C3C	-2.10	121.97	126.97
12	C	405	NS5	C24-C23-C21	-2.05	120.32	126.34
5	A	404	HEC	CMB-C2B-C1B	-2.03	124.86	128.31
12	C	405	NS5	C8-C7-C5	-2.02	123.29	127.75
13	C	406	OTP	C8-C7-C9	-2.02	119.67	123.58
7	B	302	BCL	OBB-CAB-CBB	-2.01	115.33	120.14
12	C	405	NS5	C25-C24-C23	-2.00	116.92	123.11
8	C	402	BPB	CMB-C2B-C3B	2.04	129.08	125.09
13	C	406	OTP	C1-C2-C3	2.05	119.60	114.61
7	B	303	BCL	O2D-CGD-CBD	2.06	114.18	111.22
12	C	405	NS5	CM4-C36-CM3	2.09	119.68	114.61
6	A	405	DGA	OG1-CG1-CG2	2.11	114.28	108.62
11	C	404	MQ7	C45-C43-C44	2.17	119.88	114.61
7	C	401	BCL	CMD-C2D-C3D	2.22	129.43	125.09
13	C	406	OTP	C38-C37-C36	2.24	118.78	115.37
13	C	406	OTP	C36-C37-C39	2.41	125.46	120.98
7	B	302	BCL	CMB-C2B-C3B	2.46	129.91	125.09
7	B	302	BCL	CMD-C2D-C3D	2.52	130.02	125.09
13	C	406	OTP	C18-C17-C16	2.54	119.25	115.37
5	A	401	HEC	CMB-C2B-C3B	2.70	128.79	125.67
11	C	404	MQ7	C24-C23-C25	2.71	119.50	115.37
7	B	301	BCL	C2A-C1A-CHA	2.72	128.18	123.80
5	A	402	HEC	CMC-C2C-C3C	2.75	128.86	125.67
7	B	303	BCL	CMB-C2B-C3B	2.76	130.49	125.09
12	C	405	NS5	C32-C31-C33	2.77	119.58	115.37
7	C	401	BCL	CMB-C2B-C3B	2.78	130.53	125.09
11	C	404	MQ7	C29-C28-C30	2.83	119.68	115.37
13	C	406	OTP	C23-C22-C21	2.83	119.68	115.37
11	C	404	MQ7	C34-C33-C35	2.83	119.69	115.37
5	A	403	HEC	CMB-C2B-C3B	2.85	128.97	125.67
8	C	402	BPB	C11-C10-C8	2.91	124.45	115.46
8	C	402	BPB	C6-C5-C3	2.92	118.01	112.76
5	A	401	HEC	CMC-C2C-C3C	2.99	129.13	125.67
5	A	403	HEC	CMC-C2C-C3C	3.00	129.14	125.67
8	B	304	BPB	C6-C5-C3	3.11	118.34	112.76
7	B	303	BCL	C2A-C1A-CHA	3.16	128.89	123.80
12	C	405	NS5	C6-C5-C4	3.18	120.21	115.37
6	A	405	DGA	OG2-CB1-CB2	3.21	118.29	111.53

Continued on next page...

Continued from previous page...

Mol	Chain	Res	Type	Atoms	Z	Observed(°)	Ideal(°)
5	A	402	HEC	CMB-C2B-C3B	3.21	129.39	125.67
11	C	404	MQ7	C39-C38-C40	3.25	120.32	115.37
6	A	405	DGA	OG1-CA1-CA2	3.27	121.93	111.85
13	C	406	OTP	C8-C7-C6	3.28	120.36	115.37
5	A	404	HEC	CMC-C2C-C3C	3.30	129.50	125.67
13	C	406	OTP	C13-C12-C11	3.31	120.42	115.37
7	B	302	BCL	C2A-C1A-CHA	3.34	129.18	123.80
11	C	404	MQ7	C14-C13-C15	3.38	120.52	115.37
13	C	406	OTP	C28-C27-C26	3.60	120.85	115.37
8	C	402	BPB	C2A-C1A-NA	3.69	110.83	107.76
11	C	404	MQ7	C19-C18-C20	3.80	121.16	115.37
7	C	401	BCL	C2A-C1A-CHA	3.91	130.10	123.80
8	C	402	BPB	C3D-C4D-CHA	3.95	116.75	107.14
8	B	304	BPB	C3D-C4D-CHA	4.04	116.96	107.14
12	C	405	NS5	C11-C10-C9	4.14	121.68	115.37
8	B	304	BPB	C2A-C1A-NA	4.40	111.42	107.76
13	C	406	OTP	C33-C32-C31	5.00	122.99	115.37
9	B	306	MPG	O1-CX3-CXD	6.07	121.12	111.73
6	A	405	DGA	CG3-CG2-CG1	6.29	132.91	112.65
9	B	305	MPG	O1-CX3-CXD	7.28	122.98	111.73

There are no chirality outliers.

There are no torsion outliers.

There are no ring outliers.

16 monomers are involved in 43 short contacts:

Mol	Chain	Res	Type	Clashes	Symm-Clashes
5	A	401	HEC	4	0
5	A	402	HEC	6	0
5	A	403	HEC	5	0
5	A	404	HEC	7	0
6	A	405	DGA	2	0
7	B	301	BCL	2	0
7	B	302	BCL	1	0
7	B	303	BCL	3	0
8	B	304	BPB	1	0
9	B	305	MPG	2	0
9	B	306	MPG	1	0
7	C	401	BCL	1	0
8	C	402	BPB	4	0
12	C	405	NS5	4	0

Continued on next page...

Continued from previous page...

Mol	Chain	Res	Type	Clashes	Symm-Clashes
13	C	406	OTP	1	0
9	C	407	MPG	1	0

5.7 Other polymers [i](#)

There are no such residues in this entry.

5.8 Polymer linkage issues [i](#)

There are no chain breaks in this entry.

6 Fit of model and data

6.1 Protein, DNA and RNA chains

In the following table, the column labelled ‘#RSRZ> 2’ contains the number (and percentage) of RSRZ outliers, followed by percent RSRZ outliers for the chain as percentile scores relative to all X-ray entries and entries of similar resolution. The OWAB column contains the minimum, median, 95th percentile and maximum values of the occupancy-weighted average B-factor per residue. The column labelled ‘Q< 0.9’ lists the number of (and percentage) of residues with an average occupancy less than 0.9.

Mol	Chain	Analysed	<RSRZ>	#RSRZ>2	OWAB(Å ²)	Q<0.9
1	A	332/356 (93%)	-0.20	4 (1%) 81 69	48, 63, 86, 116	0
2	B	273/274 (99%)	-0.28	1 (0%) 93 88	52, 78, 111, 135	0
3	C	323/324 (99%)	-0.33	1 (0%) 94 90	51, 77, 116, 141	0
4	D	242/258 (93%)	0.44	11 (4%) 37 26	63, 122, 153, 235	0
All	All	1170/1212 (96%)	-0.12	17 (1%) 76 64	48, 76, 134, 235	0

All (17) RSRZ outliers are listed below:

Mol	Chain	Res	Type	RSRZ
4	D	84	GLU	6.1
4	D	83	PRO	4.9
4	D	192	ARG	2.9
4	D	104	THR	2.9
4	D	82	ARG	2.8
4	D	213	ILE	2.7
4	D	95	GLY	2.5
4	D	85	THR	2.4
1	A	47	ALA	2.4
4	D	101	LEU	2.2
1	A	48	GLU	2.2
3	C	27	ASP	2.2
4	D	249	ALA	2.2
1	A	64	ASN	2.1
4	D	79	PRO	2.1
1	A	65	LEU	2.1
2	B	13	GLY	2.0

6.2 Non-standard residues in protein, DNA, RNA chains [i](#)

In the following table, the Atoms column lists the number of modelled atoms in the group and the number defined in the chemical component dictionary. LLDF column lists the quality of electron density of the group with respect to its neighbouring residues in protein, DNA or RNA chains. The B-factors column lists the minimum, median, 95th percentile and maximum values of B factors of atoms in the group. The column labelled 'Q< 0.9' lists the number of atoms with occupancy less than 0.9.

Mol	Type	Chain	Res	Atoms	RSCC	RSR	LLDF	B-factors(Å ²)	Q<0.9
4	FME	D	1	10/11	0.86	0.38	-	77,81,114,124	0

6.3 Carbohydrates [i](#)

There are no carbohydrates in this entry.

6.4 Ligands [i](#)

In the following table, the Atoms column lists the number of modelled atoms in the group and the number defined in the chemical component dictionary. LLDF column lists the quality of electron density of the group with respect to its neighbouring residues in protein, DNA or RNA chains. The B-factors column lists the minimum, median, 95th percentile and maximum values of B factors of atoms in the group. The column labelled 'Q< 0.9' lists the number of atoms with occupancy less than 0.9.

Mol	Type	Chain	Res	Atoms	RSCC	RSR	LLDF	B-factors(Å ²)	Q<0.9
6	DGA	A	405	37/44	0.59	0.54	10.82	68,91,112,114	0
9	MPG	B	306	25/25	0.64	0.58	9.04	76,94,112,116	0
9	MPG	C	407	17/25	0.43	0.90	5.82	100,112,133,134	0
12	NS5	C	405	40/40	0.76	0.51	5.59	65,75,95,96	0
13	OTP	C	406	41/49	0.78	0.38	4.10	71,78,106,108	0
9	MPG	B	305	25/25	0.73	0.43	3.68	61,93,124,125	0
11	MQ7	C	404	48/48	0.87	0.38	2.84	60,87,93,94	0
8	BPB	B	304	65/65	0.92	0.27	1.77	57,71,79,80	0
7	BCL	C	401	66/66	0.90	0.27	1.65	54,64,72,74	0
8	BPB	C	402	61/65	0.88	0.34	1.55	72,80,100,104	0
7	BCL	B	302	66/66	0.93	0.24	1.45	48,63,70,71	0
5	HEC	A	403	43/43	0.96	0.28	1.41	30,54,56,56	0
7	BCL	B	301	65/66	0.91	0.27	1.16	37,62,166,173	0
14	PO4	C	408	5/5	0.61	0.40	1.00	118,118,119,121	0
5	HEC	A	404	43/43	0.94	0.23	0.49	32,59,62,62	0
5	HEC	A	402	43/43	0.96	0.27	0.42	35,54,61,72	0
5	HEC	A	401	43/43	0.96	0.32	0.12	45,74,77,80	0

Continued on next page...

Continued from previous page...

Mol	Type	Chain	Res	Atoms	RSCC	RSR	LLDF	B-factors(\AA^2)	Q<0.9
7	BCL	B	303	66/66	0.94	0.21	-0.38	56,64,74,79	0
10	FE2	C	403	1/1	0.94	0.17	-1.16	74,74,74,74	0
14	PO4	C	409	5/5	0.85	0.34	-	124,125,126,126	0

6.5 Other polymers [i](#)

There are no such residues in this entry.