



# Full wwPDB X-ray Structure Validation Report ⓘ

Feb 1, 2016 – 10:32 AM GMT

PDB ID : 3MAQ  
Title : Crystal structure of E.coli Pol II-normal DNA-dGTP ternary complex  
Authors : Yang, W.; Wang, F.  
Deposited on : 2010-03-24  
Resolution : 2.40 Å(reported)

This is a Full wwPDB X-ray Structure Validation Report for a publicly released PDB entry.  
We welcome your comments at [validation@mail.wwpdb.org](mailto:validation@mail.wwpdb.org)  
A user guide is available at  
<http://wwpdb.org/validation/2016/XrayValidationReportHelp>  
with specific help available everywhere you see the ⓘ symbol.

---

The following versions of software and data (see [references ⓘ](#)) were used in the production of this report:

MolProbity : 4.02b-467  
Mogul : 1.7 (RC4), CSD as536be (2015)  
Xtriage (Phenix) : 1.9-1692  
EDS : rb-20026688  
Percentile statistics : 20151230.v01 (using entries in the PDB archive December 30th 2015)  
Refmac : 5.8.0135  
CCP4 : 6.5.0  
Ideal geometry (proteins) : Engh & Huber (2001)  
Ideal geometry (DNA, RNA) : Parkinson et al. (1996)  
Validation Pipeline (wwPDB-VP) : trunk26865

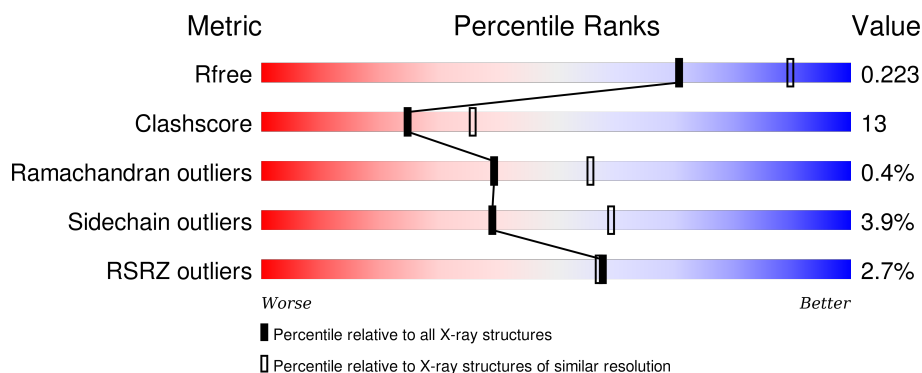
# 1 Overall quality at a glance

The following experimental techniques were used to determine the structure:

## *X-RAY DIFFRACTION*

The reported resolution of this entry is 2.40 Å.

Percentile scores (ranging between 0-100) for global validation metrics of the entry are shown in the following graphic. The table shows the number of entries on which the scores are based.



Metric	Whole archive (#Entries)	Similar resolution (#Entries, resolution range(Å))
$R_{free}$	91344	2919 (2.40-2.40)
Clashscore	102246	3407 (2.40-2.40)
Ramachandran outliers	100387	3351 (2.40-2.40)
Sidechain outliers	100360	3352 (2.40-2.40)
RSRZ outliers	91569	2928 (2.40-2.40)

The table below summarises the geometric issues observed across the polymeric chains and their fit to the electron density. The red, orange, yellow and green segments on the lower bar indicate the fraction of residues that contain outliers for  $\geq 3$ , 2, 1 and 0 types of geometric quality criteria. A grey segment represents the fraction of residues that are not modelled. The numeric value for each fraction is indicated below the corresponding segment, with a dot representing fractions  $\leq 5\%$ . The upper red bar (where present) indicates the fraction of residues that have poor fit to the electron density. The numeric value is given above the bar.

Mol	Chain	Length	Quality of chain
1	A	786	<div> <div>2%</div> <div>78%</div> <div>20%</div> <div>..</div> </div>
2	T	17	<div> <div>29%</div> <div>41%</div> <div>47%</div> <div>12%</div> </div>
3	P	13	<div> <div>15%</div> <div>38%</div> <div>62%</div> </div>

The following table lists non-polymeric compounds, carbohydrate monomers and non-standard residues in protein, DNA, RNA chains that are outliers for geometric or electron-density-fit criteria:

Mol	Type	Chain	Res	Chirality	Geometry	Clashes	Electron density
5	MG	A	1001	-	-	-	X

## 2 Entry composition

There are 6 unique types of molecules in this entry. The entry contains 7337 atoms, of which 0 are hydrogens and 0 are deuteriums.

In the tables below, the ZeroOcc column contains the number of atoms modelled with zero occupancy, the AltConf column contains the number of residues with at least one atom in alternate conformation and the Trace column contains the number of residues modelled with at most 2 atoms.

- Molecule 1 is a protein called DNA polymerase II.

Mol	Chain	Residues	Atoms					ZeroOcc	AltConf	Trace
1	A	776	Total	C	N	O	S	0	0	0
			6306	4017	1123	1141	25			

There are 4 discrepancies between the modelled and reference sequences:

Chain	Residue	Modelled	Actual	Comment	Reference
A	-2	GLY	-	EXPRESSION TAG	UNP P21189
A	-1	PRO	-	EXPRESSION TAG	UNP P21189
A	0	HIS	-	EXPRESSION TAG	UNP P21189
A	335	ASN	ASP	ENGINEERED	UNP P21189

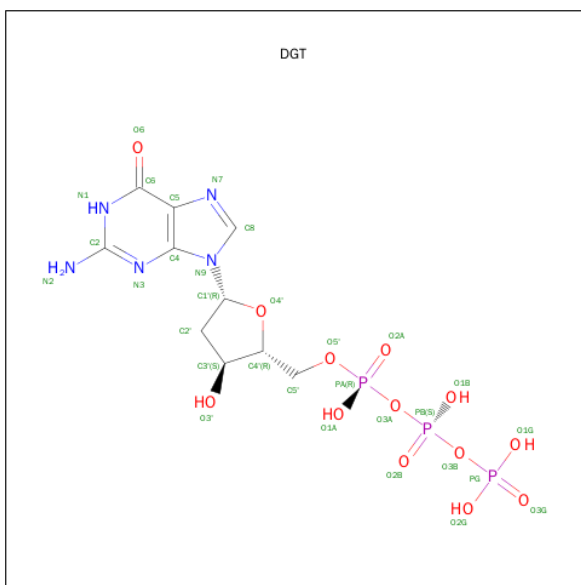
- Molecule 2 is a DNA chain called DNA (5'-D(\*TP\*AP\*CP\*GP\*TP\*AP\*CP\*GP\*CP\*TP\*AP\*GP\*GP\*CP\*AP\*CP\*A)-3').

Mol	Chain	Residues	Atoms					ZeroOcc	AltConf	Trace
2	T	17	Total	C	N	O	P	0	0	0
			345	165	66	98	16			

- Molecule 3 is a DNA chain called DNA (5'-D(\*GP\*TP\*GP\*CP\*CP\*TP\*AP\*GP\*CP\*GP\*TP\*AP\*(DOC))-3').

Mol	Chain	Residues	Atoms					ZeroOcc	AltConf	Trace
3	P	13	Total	C	N	O	P	0	0	0
			262	126	48	76	12			

- Molecule 4 is 2'-DEOXYGUANOSINE-5'-TRIPHOSPHATE (three-letter code: DGT) (formula: C<sub>10</sub>H<sub>16</sub>N<sub>5</sub>O<sub>13</sub>P<sub>3</sub>).



Mol	Chain	Residues	Atoms					ZeroOcc	AltConf
4	A	1	Total	C	N	O	P	0	0
			31	10	5	13	3		

- Molecule 5 is MAGNESIUM ION (three-letter code: MG) (formula: Mg).

Mol	Chain	Residues	Atoms	ZeroOcc	AltConf
5	A	2	Total Mg 2 2	0	0

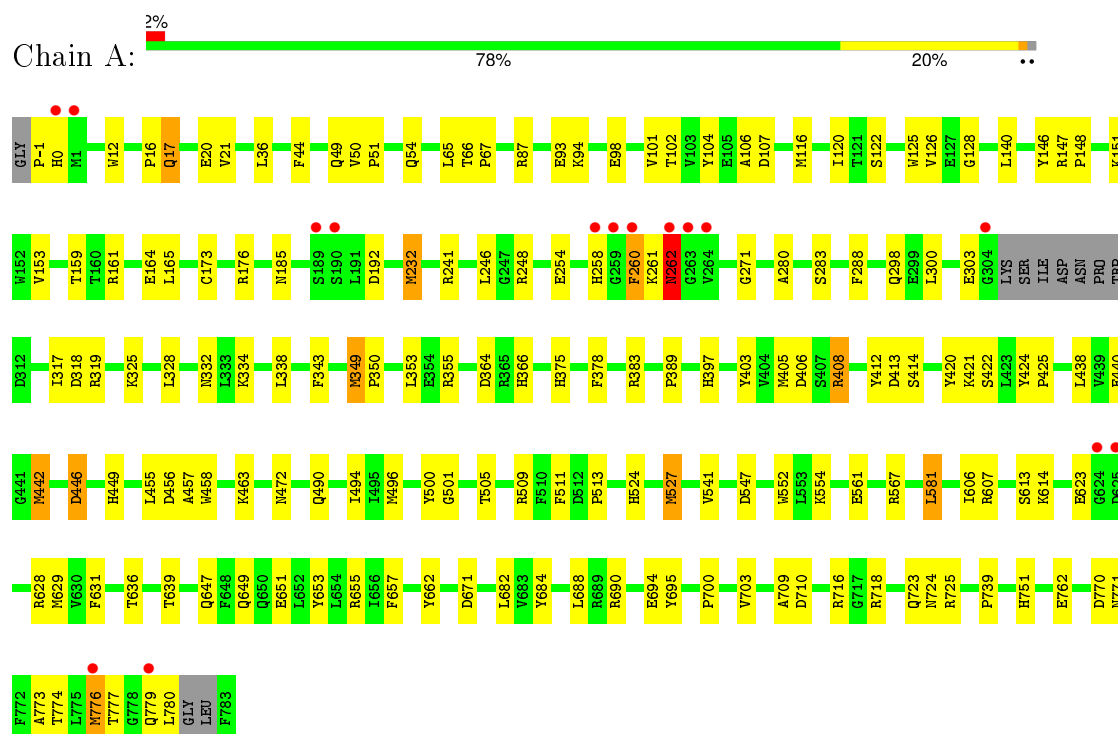
- Molecule 6 is water.

Mol	Chain	Residues	Atoms	ZeroOcc	AltConf
6	A	360	Total O 360 360	0	0
6	T	23	Total O 23 23	0	0
6	P	8	Total O 8 8	0	0

### 3 Residue-property plots [i](#)

These plots are drawn for all protein, RNA and DNA chains in the entry. The first graphic for a chain summarises the proportions of errors displayed in the second graphic. The second graphic shows the sequence view annotated by issues in geometry and electron density. Residues are color-coded according to the number of geometric quality criteria for which they contain at least one outlier: green = 0, yellow = 1, orange = 2 and red = 3 or more. A red dot above a residue indicates a poor fit to the electron density ( $\text{RSRZ} > 2$ ). Stretches of 2 or more consecutive residues without any outlier are shown as a green connector. Residues present in the sample, but not in the model, are shown in grey.

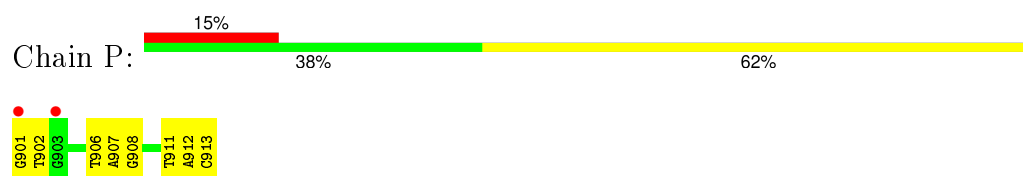
- Molecule 1: DNA polymerase II



- Molecule 2: DNA (5'-D(\*TP\*AP\*CP\*GP\*TP\*AP\*CP\*GP\*CP\*TP\*AP\*GP\*GP\*CP\*AP\*CP\*A)-3')



- Molecule 3: DNA (5'-D(\*GP\*TP\*GP\*CP\*CP\*TP\*AP\*GP\*CP\*GP\*TP\*AP\*(DOC))-3')



## 4 Data and refinement statistics

Property	Value	Source
Space group	P 21 21 21	Depositor
Cell constants a, b, c, $\alpha$ , $\beta$ , $\gamma$	80.93Å 100.73Å 126.22Å 90.00° 90.00° 90.00°	Depositor
Resolution (Å)	30.00 – 2.40 29.99 – 2.40	Depositor EDS
% Data completeness (in resolution range)	(Not available) (30.00-2.40) 91.5 (29.99-2.40)	Depositor EDS
$R_{merge}$	0.16	Depositor
$R_{sym}$	(Not available)	Depositor
$\langle I/\sigma(I) \rangle$ <sup>1</sup>	4.43 (at 2.39Å)	Xtriage
Refinement program	CNS 1.1	Depositor
R, $R_{free}$	0.216 , 0.223 0.216 , 0.223	Depositor DCC
$R_{free}$ test set	932 reflections (2.49%)	DCC
Wilson B-factor (Å <sup>2</sup> )	24.2	Xtriage
Anisotropy	0.277	Xtriage
Bulk solvent $k_{sol}$ (e/Å <sup>3</sup> ), $B_{sol}$ (Å <sup>2</sup> )	0.35 , 46.9	EDS
Estimated twinning fraction	No twinning to report.	Xtriage
L-test for twinning <sup>2</sup>	$\langle  L  \rangle = 0.48$ , $\langle L^2 \rangle = 0.31$	Xtriage
Outliers	0 of 40721 reflections	Xtriage
$F_o, F_c$ correlation	0.92	EDS
Total number of atoms	7337	wwPDB-VP
Average B, all atoms (Å <sup>2</sup> )	27.0	wwPDB-VP

Xtriage's analysis on translational NCS is as follows: *The largest off-origin peak in the Patterson function is 3.55% of the height of the origin peak. No significant pseudotranslation is detected.*

<sup>1</sup>Intensities estimated from amplitudes.

<sup>2</sup>Theoretical values of  $\langle |L| \rangle$ ,  $\langle L^2 \rangle$  for acentric reflections are 0.5, 0.375 respectively for untwinned datasets, and 0.333, 0.2 for perfectly twinned datasets.

## 5 Model quality [i](#)

### 5.1 Standard geometry [i](#)

Bond lengths and bond angles in the following residue types are not validated in this section: DOC, MG, DGT

The Z score for a bond length (or angle) is the number of standard deviations the observed value is removed from the expected value. A bond length (or angle) with  $|Z| > 5$  is considered an outlier worth inspection. RMSZ is the root-mean-square of all Z scores of the bond lengths (or angles).

Mol	Chain	Bond lengths		Bond angles	
		RMSZ	$\# Z  > 5$	RMSZ	$\# Z  > 5$
1	A	0.48	0/6472	0.76	2/8773 (0.0%)
2	T	0.68	0/387	1.11	2/595 (0.3%)
3	P	0.79	0/273	1.08	1/420 (0.2%)
All	All	0.51	0/7132	0.80	5/9788 (0.1%)

There are no bond length outliers.

All (5) bond angle outliers are listed below:

Mol	Chain	Res	Type	Atoms	Z	Observed(°)	Ideal(°)
2	T	802	DT	C1'-O4'-C4'	-6.72	103.38	110.10
3	P	906	DT	C1'-O4'-C4'	-5.58	104.52	110.10
1	A	413	ASP	N-CA-C	-5.33	96.60	111.00
1	A	688	LEU	N-CA-C	-5.24	96.86	111.00
2	T	818	DA	O4'-C1'-N9	-5.15	104.39	108.00

There are no chirality outliers.

There are no planarity outliers.

### 5.2 Too-close contacts [i](#)

In the following table, the Non-H and H(model) columns list the number of non-hydrogen atoms and hydrogen atoms in the chain respectively. The H(added) column lists the number of hydrogen atoms added and optimized by MolProbity. The Clashes column lists the number of clashes within the asymmetric unit, whereas Symm-Clashes lists symmetry related clashes.

Mol	Chain	Non-H	H(model)	H(added)	Clashes	Symm-Clashes
1	A	6306	0	6183	159	0
2	T	345	0	192	14	0
3	P	262	0	148	5	0

*Continued on next page...*



*Continued from previous page...*

Mol	Chain	Non-H	H(model)	H(added)	Clashes	Symm-Clashes
4	A	31	0	9	3	0
5	A	2	0	0	0	0
6	A	360	0	0	3	0
6	P	8	0	0	0	0
6	T	23	0	0	0	0
All	All	7337	0	6532	172	0

The all-atom clashscore is defined as the number of clashes found per 1000 atoms (including hydrogen atoms). The all-atom clashscore for this structure is 13.

All (172) close contacts within the same asymmetric unit are listed below, sorted by their clash magnitude.

Atom-1	Atom-2	Interatomic distance (Å)	Clash overlap (Å)
1:A:260:PHE:HD2	1:A:261:LYS:CE	1.49	1.26
1:A:260:PHE:CD2	1:A:261:LYS:HE2	1.78	1.19
1:A:779:GLN:O	1:A:780:LEU:HD12	1.50	1.12
1:A:260:PHE:CD2	1:A:261:LYS:CE	2.34	1.11
1:A:116:MET:HE2	1:A:378:PHE:HB2	1.26	1.09
1:A:16:PRO:HB2	1:A:17:GLN:NE2	1.72	1.04
1:A:260:PHE:HD2	1:A:261:LYS:HE2	0.88	1.02
1:A:260:PHE:C	1:A:261:LYS:HD3	1.87	0.94
1:A:16:PRO:HB2	1:A:17:GLN:HE22	1.32	0.94
1:A:261:LYS:HD3	1:A:261:LYS:N	1.81	0.93
2:T:818:DA:H5''	2:T:818:DA:H8	1.34	0.92
1:A:49:GLN:HE22	1:A:102:THR:H	1.14	0.89
1:A:355:ARG:HH12	1:A:366:HIS:HA	1.35	0.89
1:A:116:MET:CE	1:A:378:PHE:HB2	2.03	0.89
1:A:116:MET:HE1	1:A:378:PHE:CG	2.07	0.88
2:T:818:DA:H5''	2:T:818:DA:C8	2.07	0.88
1:A:288:PHE:CE1	1:A:300:LEU:HD11	2.09	0.87
1:A:288:PHE:HE1	1:A:300:LEU:HD11	1.40	0.87
2:T:818:DA:C5'	2:T:818:DA:H8	1.88	0.86
1:A:49:GLN:NE2	1:A:102:THR:H	1.73	0.85
1:A:260:PHE:CD2	1:A:261:LYS:HE3	2.08	0.85
1:A:442:MET:HE1	1:A:458:TRP:H	1.43	0.82
1:A:94:LYS:HE3	1:A:98:GLU:OE2	1.79	0.81
1:A:288:PHE:HE1	1:A:300:LEU:CD1	1.92	0.81
1:A:647:GLN:O	1:A:651:GLU:HG3	1.82	0.80
1:A:343:PHE:HE1	1:A:349:MET:HE3	1.47	0.78
1:A:716:ARG:NH1	1:A:718:ARG:NH2	2.32	0.77
1:A:472:ASN:HB2	6:A:933:HOH:O	1.85	0.77

*Continued on next page...*

*Continued from previous page...*

Atom-1	Atom-2	Interatomic distance (Å)	Clash overlap (Å)
1:A:779:GLN:C	1:A:780:LEU:HD12	2.05	0.77
1:A:408:ARG:HD3	1:A:412:TYR:OH	1.85	0.76
1:A:116:MET:HE2	1:A:378:PHE:CB	2.13	0.76
1:A:116:MET:HE1	1:A:378:PHE:CD1	2.20	0.76
1:A:120:ILE:O	1:A:375:HIS:HE1	1.69	0.75
1:A:438:LEU:CD1	1:A:442:MET:CE	2.66	0.73
1:A:567:ARG:HH11	1:A:567:ARG:HG2	1.55	0.71
1:A:116:MET:CE	1:A:378:PHE:CG	2.75	0.70
1:A:771:ASN:OD1	1:A:773:ALA:HB3	1.91	0.69
1:A:288:PHE:CE1	1:A:300:LEU:CD1	2.72	0.69
1:A:776:MET:HG3	1:A:777:THR:N	2.08	0.68
1:A:438:LEU:HD11	1:A:442:MET:CE	2.23	0.68
1:A:116:MET:CE	1:A:378:PHE:CB	2.70	0.67
1:A:94:LYS:CE	1:A:98:GLU:OE2	2.43	0.66
1:A:298:GLN:HG3	1:A:303:GLU:O	1.96	0.66
2:T:817:DC:H2''	2:T:818:DA:O5'	1.96	0.65
1:A:438:LEU:HD12	1:A:442:MET:CE	2.27	0.64
3:P:912:DA:H2''	3:P:913:DOC:H5'	1.80	0.64
2:T:818:DA:C5'	2:T:818:DA:C8	2.72	0.63
1:A:261:LYS:N	1:A:261:LYS:CD	2.56	0.63
1:A:50:VAL:HB	1:A:51:PRO:HD3	1.80	0.63
1:A:349:MET:HB3	1:A:350:PRO:HD3	1.81	0.62
1:A:12:TRP:HA	1:A:20:GLU:O	1.99	0.62
1:A:607:ARG:NH1	1:A:762:GLU:OE2	2.33	0.62
1:A:49:GLN:HE22	1:A:102:THR:N	1.93	0.62
1:A:185:ASN:HD21	1:A:325:LYS:HE3	1.65	0.61
1:A:343:PHE:CE1	1:A:349:MET:CE	2.84	0.61
1:A:176:ARG:NH1	1:A:192:ASP:O	2.31	0.60
1:A:343:PHE:CE1	1:A:349:MET:HE3	2.33	0.60
1:A:567:ARG:CG	1:A:567:ARG:HH11	2.15	0.59
1:A:258:HIS:CE1	1:A:261:LYS:HG2	2.38	0.59
1:A:343:PHE:HE1	1:A:349:MET:CE	2.16	0.59
1:A:581:LEU:N	1:A:581:LEU:CD1	2.66	0.58
1:A:258:HIS:NE2	2:T:802:DT:H3'	2.19	0.58
1:A:17:GLN:NE2	1:A:17:GLN:N	2.51	0.58
1:A:490:GLN:HE21	1:A:494:ILE:HD11	1.69	0.58
1:A:446:ASP:OD1	1:A:449:HIS:HD2	1.86	0.58
1:A:629:MET:HE3	1:A:657:PHE:CD2	2.38	0.58
1:A:710:ASP:OD2	1:A:723:GLN:NE2	2.33	0.57
1:A:773:ALA:O	1:A:777:THR:HB	2.04	0.57
1:A:700:PRO:HD2	1:A:703:VAL:HB	1.87	0.57

*Continued on next page...*

*Continued from previous page...*

Atom-1	Atom-2	Interatomic distance (Å)	Clash overlap (Å)
1:A:248:ARG:NH1	1:A:271:GLY:O	2.37	0.57
1:A:438:LEU:CD1	1:A:442:MET:HE2	2.35	0.56
1:A:120:ILE:O	1:A:375:HIS:CE1	2.54	0.56
1:A:724:ASN:O	1:A:725:ARG:HB2	2.05	0.56
1:A:16:PRO:CB	1:A:17:GLN:NE2	2.60	0.56
1:A:50:VAL:HG13	1:A:65:LEU:HD13	1.88	0.55
1:A:771:ASN:OD1	1:A:773:ALA:N	2.39	0.55
1:A:159:THR:HG22	1:A:165:LEU:HA	1.89	0.55
1:A:438:LEU:HD12	1:A:442:MET:HE1	1.89	0.55
1:A:16:PRO:HB2	1:A:17:GLN:HE21	1.68	0.54
1:A:232:MET:HA	1:A:232:MET:HE2	1.89	0.54
1:A:94:LYS:NZ	1:A:98:GLU:OE2	2.40	0.54
1:A:161:ARG:NH1	1:A:318:ASP:OD2	2.33	0.54
1:A:690:ARG:HB3	1:A:695:TYR:CZ	2.43	0.53
1:A:107:ASP:OD1	1:A:509:ARG:NH2	2.37	0.52
1:A:405:MET:HE1	1:A:541:VAL:HG12	1.92	0.52
1:A:280:ALA:O	1:A:283:SER:HB3	2.09	0.52
1:A:651:GLU:HB3	1:A:655:ARG:HH21	1.74	0.52
3:P:907:DA:H2''	3:P:908:DG:O5'	2.10	0.52
1:A:424:TYR:CD2	4:A:914:DGT:H2'	2.44	0.52
1:A:490:GLN:NE2	1:A:494:ILE:HD11	2.23	0.51
1:A:93:GLU:HG3	1:A:106:ALA:HB3	1.92	0.51
1:A:159:THR:HB	1:A:164:GLU:O	2.09	0.51
1:A:420:TYR:HB2	1:A:547:ASP:HB2	1.92	0.51
1:A:425:PRO:HG3	1:A:496:MET:HB3	1.93	0.51
1:A:567:ARG:CG	1:A:567:ARG:NH1	2.70	0.51
1:A:671:ASP:HB2	1:A:779:GLN:HE22	1.76	0.50
1:A:93:GLU:HG3	1:A:106:ALA:CB	2.42	0.50
1:A:684:TYR:OH	1:A:751:HIS:HE1	1.94	0.50
1:A:446:ASP:OD1	1:A:449:HIS:CD2	2.65	0.49
1:A:288:PHE:CZ	1:A:300:LEU:HD11	2.45	0.49
1:A:567:ARG:HD2	6:A:872:HOH:O	2.11	0.49
2:T:815:DC:H2'	2:T:816:DA:C8	2.47	0.49
1:A:126:VAL:HG23	1:A:140:LEU:HD23	1.94	0.49
1:A:779:GLN:HG2	1:A:780:LEU:HD13	1.95	0.49
1:A:0:HIS:HA	1:A:128:GLY:O	2.13	0.49
3:P:901:DG:C2'	3:P:902:DT:H72	2.43	0.49
1:A:662:TYR:OH	1:A:770:ASP:OD2	2.26	0.49
1:A:389:PRO:O	1:A:509:ARG:HB2	2.13	0.49
1:A:709:ALA:HB2	1:A:739:PRO:HG3	1.95	0.49
1:A:629:MET:CE	1:A:653:TYR:HB3	2.44	0.48

*Continued on next page...*

*Continued from previous page...*

Atom-1	Atom-2	Interatomic distance (Å)	Clash overlap (Å)
1:A:50:VAL:O	1:A:54:GLN:HG3	2.14	0.47
2:T:816:DA:H2''	2:T:817:DC:H6	1.78	0.47
2:T:806:DT:H1'	2:T:807:DA:H5'	1.96	0.47
1:A:636:THR:H	1:A:649:GLN:NE2	2.11	0.47
1:A:397:HIS:HB3	1:A:513:PRO:CG	2.45	0.47
1:A:776:MET:O	1:A:779:GLN:HB3	2.15	0.46
1:A:552:TRP:CE2	1:A:554:LYS:HA	2.51	0.46
1:A:629:MET:CE	1:A:657:PHE:CE2	2.98	0.46
1:A:639:THR:HG23	3:P:911:DT:OP1	2.15	0.46
1:A:440:GLU:HG3	1:A:463:LYS:HG2	1.98	0.46
1:A:552:TRP:CZ3	1:A:554:LYS:HE3	2.51	0.45
1:A:455:LEU:O	1:A:456:ASP:HB2	2.16	0.45
1:A:629:MET:HE3	1:A:653:TYR:HB3	1.99	0.45
1:A:771:ASN:OD1	1:A:773:ALA:CB	2.62	0.45
2:T:817:DC:H2''	2:T:818:DA:C8	2.52	0.45
1:A:629:MET:HE3	1:A:657:PHE:CE2	2.51	0.45
1:A:606:ILE:HG13	1:A:613:SER:HA	1.99	0.45
1:A:260:PHE:CE2	1:A:261:LYS:HE3	2.51	0.45
1:A:438:LEU:HD11	1:A:442:MET:HE3	1.99	0.45
1:A:629:MET:HE1	1:A:631:PHE:CZ	2.52	0.44
1:A:779:GLN:O	1:A:780:LEU:CD1	2.41	0.44
1:A:716:ARG:HH11	1:A:718:ARG:NH2	2.12	0.44
1:A:505:THR:HB	2:T:805:DG:H5''	1.99	0.44
1:A:547:ASP:OD1	4:A:914:DGT:O2A	2.34	0.44
1:A:21:VAL:HB	1:A:36:LEU:HD12	1.99	0.44
1:A:505:THR:O	1:A:511:PHE:HB2	2.18	0.44
1:A:49:GLN:HE21	1:A:101:VAL:HA	1.82	0.44
1:A:406:ASP:HB2	6:A:935:HOH:O	2.17	0.44
1:A:629:MET:HE2	1:A:657:PHE:HE2	1.83	0.43
1:A:779:GLN:HG2	1:A:780:LEU:CD1	2.49	0.43
1:A:49:GLN:NE2	1:A:101:VAL:HA	2.33	0.43
1:A:16:PRO:CB	1:A:17:GLN:HE22	2.16	0.43
1:A:44:PHE:HB2	1:A:104:TYR:HB2	2.01	0.43
1:A:66:THR:HA	1:A:67:PRO:HD3	1.84	0.43
1:A:258:HIS:CE1	2:T:802:DT:H3'	2.53	0.43
1:A:629:MET:HE1	1:A:631:PHE:HZ	1.84	0.43
1:A:614:LYS:HD3	2:T:808:DC:H5''	2.00	0.43
1:A:332:ASN:OD1	1:A:332:ASN:C	2.56	0.43
1:A:151:LYS:HE2	1:A:173:CYS:SG	2.59	0.42
1:A:424:TYR:HB2	1:A:425:PRO:HD3	2.01	0.42
1:A:442:MET:CE	1:A:457:ALA:HA	2.49	0.42

*Continued on next page...*

*Continued from previous page...*

Atom-1	Atom-2	Interatomic distance (Å)	Clash overlap (Å)
1:A:146:TYR:O	1:A:147:ARG:HD3	2.18	0.42
1:A:262:ASN:H	1:A:262:ASN:HD22	1.65	0.42
1:A:490:GLN:O	1:A:494:ILE:HD12	2.20	0.42
1:A:690:ARG:HD3	1:A:694:GLU:HB3	2.00	0.42
1:A:317:ILE:HG23	1:A:328:LEU:HD11	2.02	0.42
1:A:424:TYR:CG	4:A:914:DGT:H2'	2.55	0.42
1:A:349:MET:CB	1:A:350:PRO:HD3	2.48	0.41
1:A:581:LEU:HD13	1:A:581:LEU:N	2.34	0.41
3:P:907:DA:H8	3:P:907:DA:O5'	2.03	0.41
1:A:581:LEU:HD12	1:A:581:LEU:N	2.35	0.41
1:A:442:MET:HE3	1:A:457:ALA:HA	2.01	0.41
1:A:153:VAL:O	1:A:153:VAL:HG13	2.20	0.41
1:A:527:MET:HE1	1:A:547:ASP:C	2.40	0.41
1:A:421:LYS:O	1:A:422:SER:C	2.60	0.41
1:A:403:TYR:HB2	1:A:524:HIS:CD2	2.56	0.41
1:A:501:GLY:HA3	2:T:804:DC:O2	2.20	0.41
1:A:262:ASN:H	1:A:262:ASN:ND2	2.18	0.41
1:A:319:ARG:HH11	1:A:319:ARG:HG2	1.86	0.41
1:A:246:LEU:HD23	1:A:246:LEU:HA	1.81	0.41
1:A:232:MET:CE	1:A:232:MET:HA	2.52	0.40
1:A:334:LYS:O	1:A:338:LEU:HG	2.21	0.40

There are no symmetry-related clashes.

## 5.3 Torsion angles [i](#)

### 5.3.1 Protein backbone [i](#)

In the following table, the Percentiles column shows the percent Ramachandran outliers of the chain as a percentile score with respect to all X-ray entries followed by that with respect to entries of similar resolution.

The Analysed column shows the number of residues for which the backbone conformation was analysed, and the total number of residues.

Mol	Chain	Analysed	Favoured	Allowed	Outliers	Percentiles
1	A	771/786 (98%)	757 (98%)	11 (1%)	3 (0%)	39 56

All (3) Ramachandran outliers are listed below:

Mol	Chain	Res	Type
1	A	262	ASN
1	A	414	SER
1	A	122	SER

### 5.3.2 Protein sidechains ⓘ

In the following table, the Percentiles column shows the percent sidechain outliers of the chain as a percentile score with respect to all X-ray entries followed by that with respect to entries of similar resolution.

The Analysed column shows the number of residues for which the sidechain conformation was analysed, and the total number of residues.

Mol	Chain	Analysed	Rotameric	Outliers	Percentiles
1	A	664/672 (99%)	638 (96%)	26 (4%)	39 59

All (26) residues with a non-rotameric sidechain are listed below:

Mol	Chain	Res	Type
1	A	-1	PRO
1	A	17	GLN
1	A	87	ARG
1	A	125	TRP
1	A	148	PRO
1	A	232	MET
1	A	241	ARG
1	A	254	GLU
1	A	260	PHE
1	A	262	ASN
1	A	349	MET
1	A	353	LEU
1	A	364	ASP
1	A	383	ARG
1	A	408	ARG
1	A	442	MET
1	A	446	ASP
1	A	500	TYR
1	A	527	MET
1	A	561	GLU
1	A	581	LEU
1	A	623	GLU
1	A	628	ARG
1	A	682	LEU

*Continued on next page...*

*Continued from previous page...*

Mol	Chain	Res	Type
1	A	774	THR
1	A	776	MET

Some sidechains can be flipped to improve hydrogen bonding and reduce clashes. All (13) such sidechains are listed below:

Mol	Chain	Res	Type
1	A	17	GLN
1	A	49	GLN
1	A	58	GLN
1	A	76	GLN
1	A	262	ASN
1	A	375	HIS
1	A	449	HIS
1	A	490	GLN
1	A	584	GLN
1	A	649	GLN
1	A	751	HIS
1	A	756	GLN
1	A	779	GLN

### 5.3.3 RNA ⓘ

There are no RNA molecules in this entry.

## 5.4 Non-standard residues in protein, DNA, RNA chains ⓘ

1 non-standard protein/DNA/RNA residue is modelled in this entry.

In the following table, the Counts columns list the number of bonds (or angles) for which Mogul statistics could be retrieved, the number of bonds (or angles) that are observed in the model and the number of bonds (or angles) that are defined in the chemical component dictionary. The Link column lists molecule types, if any, to which the group is linked. The Z score for a bond length (or angle) is the number of standard deviations the observed value is removed from the expected value. A bond length (or angle) with  $|Z| > 2$  is considered an outlier worth inspection. RMSZ is the root-mean-square of all Z scores of the bond lengths (or angles).

Mol	Type	Chain	Res	Link	Bond lengths			Bond angles		
					Counts	RMSZ	$\# Z  > 2$	Counts	RMSZ	$\# Z  > 2$
3	DOC	P	913	3,2	11,19,20	0.76	0	14,26,29	1.56	3 (21%)

In the following table, the Chirals column lists the number of chiral outliers, the number of chiral

centers analysed, the number of these observed in the model and the number defined in the chemical component dictionary. Similar counts are reported in the Torsion and Rings columns. '-' means no outliers of that kind were identified.

Mol	Type	Chain	Res	Link	Chirals	Torsions	Rings
3	DOC	P	913	3,2	-	0/3/18/19	0/2/2/2

There are no bond length outliers.

All (3) bond angle outliers are listed below:

Mol	Chain	Res	Type	Atoms	Z	Observed(°)	Ideal(°)
3	P	913	DOC	C2'-C1'-N1	-2.05	108.34	112.49
3	P	913	DOC	C2-N3-C4	3.06	119.93	115.61
3	P	913	DOC	C3'-C2'-C1'	3.31	106.41	102.71

There are no chirality outliers.

There are no torsion outliers.

There are no ring outliers.

1 monomer is involved in 1 short contact:

Mol	Chain	Res	Type	Clashes	Symm-Clashes
3	P	913	DOC	1	0

## 5.5 Carbohydrates [i](#)

There are no carbohydrates in this entry.

## 5.6 Ligand geometry [i](#)

Of 3 ligands modelled in this entry, 2 are monoatomic - leaving 1 for Mogul analysis.

In the following table, the Counts columns list the number of bonds (or angles) for which Mogul statistics could be retrieved, the number of bonds (or angles) that are observed in the model and the number of bonds (or angles) that are defined in the chemical component dictionary. The Link column lists molecule types, if any, to which the group is linked. The Z score for a bond length (or angle) is the number of standard deviations the observed value is removed from the expected value. A bond length (or angle) with  $|Z| > 2$  is considered an outlier worth inspection. RMSZ is the root-mean-square of all Z scores of the bond lengths (or angles).

Mol	Type	Chain	Res	Link	Bond lengths			Bond angles		
					Counts	RMSZ	# Z  > 2	Counts	RMSZ	# Z  > 2
4	DGT	A	914	5	25,33,33	2.82	5 (20%)	35,52,52	3.03	17 (48%)



In the following table, the Chirals column lists the number of chiral outliers, the number of chiral centers analysed, the number of these observed in the model and the number defined in the chemical component dictionary. Similar counts are reported in the Torsion and Rings columns. '-' means no outliers of that kind were identified.

Mol	Type	Chain	Res	Link	Chirals	Torsions	Rings
4	DGT	A	914	5	-	0/18/34/34	0/3/3/3

All (5) bond length outliers are listed below:

Mol	Chain	Res	Type	Atoms	Z	Observed(Å)	Ideal(Å)
4	A	914	DGT	C5'-C4'	-11.73	1.13	1.51
4	A	914	DGT	PA-O1A	-2.36	1.44	1.54
4	A	914	DGT	C6-C5	2.19	1.45	1.41
4	A	914	DGT	PG-O3G	2.37	1.59	1.51
4	A	914	DGT	C6-N1	4.62	1.41	1.33

All (17) bond angle outliers are listed below:

Mol	Chain	Res	Type	Atoms	Z	Observed(°)	Ideal(°)
4	A	914	DGT	C5-C6-N1	-7.94	112.73	123.59
4	A	914	DGT	O5'-PA-O2A	-4.24	93.17	109.62
4	A	914	DGT	C2'-C1'-N9	-4.03	104.35	114.16
4	A	914	DGT	C6-C5-C4	-2.89	117.45	120.90
4	A	914	DGT	O4'-C1'-C2'	-2.87	100.55	106.27
4	A	914	DGT	O1G-PG-O3G	-2.87	101.34	110.58
4	A	914	DGT	N3-C2-N1	-2.86	123.08	127.44
4	A	914	DGT	C2'-C3'-C4'	-2.03	98.57	102.77
4	A	914	DGT	O1G-PG-O3B	2.01	114.22	105.09
4	A	914	DGT	O1A-PA-O3A	2.01	114.23	105.09
4	A	914	DGT	O3'-C3'-C2'	2.09	117.66	110.74
4	A	914	DGT	C4'-O4'-C1'	2.13	114.85	109.47
4	A	914	DGT	O1A-PA-O5'	2.81	122.61	108.46
4	A	914	DGT	O4'-C1'-N9	3.31	113.44	107.72
4	A	914	DGT	O5'-C5'-C4'	4.51	125.76	109.12
4	A	914	DGT	C6-N1-C2	6.59	125.09	115.94
4	A	914	DGT	PA-O3A-PB	8.26	155.93	132.73

There are no chirality outliers.

There are no torsion outliers.

There are no ring outliers.

1 monomer is involved in 3 short contacts:

Mol	Chain	Res	Type	Clashes	Symm-Clashes
4	A	914	DGT	3	0

## 5.7 Other polymers [i](#)

There are no such residues in this entry.

## 5.8 Polymer linkage issues [i](#)

There are no chain breaks in this entry.

## 6 Fit of model and data [i](#)

### 6.1 Protein, DNA and RNA chains [i](#)

In the following table, the column labelled ‘#RSRZ> 2’ contains the number (and percentage) of RSRZ outliers, followed by percent RSRZ outliers for the chain as percentile scores relative to all X-ray entries and entries of similar resolution. The OWAB column contains the minimum, median, 95<sup>th</sup> percentile and maximum values of the occupancy-weighted average B-factor per residue. The column labelled ‘Q< 0.9’ lists the number of (and percentage) of residues with an average occupancy less than 0.9.

Mol	Chain	Analysed	<RSRZ>	#RSRZ>2	OWAB(Å <sup>2</sup> )	Q<0.9
1	A	776/786 (98%)	-0.07	15 (1%) 70 69	10, 24, 47, 65	0
2	T	17/17 (100%)	0.91	5 (29%) 1 1	23, 30, 72, 73	0
3	P	12/13 (92%)	0.41	2 (16%) 2 2	18, 45, 61, 62	0
All	All	805/816 (98%)	-0.04	22 (2%) 58 57	10, 24, 49, 73	0

All (22) RSRZ outliers are listed below:

Mol	Chain	Res	Type	RSRZ
1	A	259	GLY	5.3
2	T	818	DA	5.3
1	A	1	MET	4.7
2	T	817	DC	4.1
1	A	190	SER	4.0
1	A	260	PHE	3.9
1	A	263	GLY	3.5
2	T	816	DA	3.4
1	A	264	VAL	3.2
1	A	262	ASN	3.1
3	P	901	DG	3.0
2	T	803	DA	2.8
1	A	189	SER	2.8
1	A	776	MET	2.7
3	P	903	DG	2.6
2	T	815	DC	2.5
1	A	624	GLY	2.4
1	A	779	GLN	2.3
1	A	0	HIS	2.1
1	A	304	GLY	2.1
1	A	625	ASP	2.1
1	A	258	HIS	2.1

## 6.2 Non-standard residues in protein, DNA, RNA chains [i](#)

In the following table, the Atoms column lists the number of modelled atoms in the group and the number defined in the chemical component dictionary. LLDF column lists the quality of electron density of the group with respect to its neighbouring residues in protein, DNA or RNA chains. The B-factors column lists the minimum, median, 95<sup>th</sup> percentile and maximum values of B factors of atoms in the group. The column labelled 'Q< 0.9' lists the number of atoms with occupancy less than 0.9.

Mol	Type	Chain	Res	Atoms	RSCC	RSR	LLDF	B-factors(Å <sup>2</sup> )	Q<0.9
3	DOC	P	913	18/19	0.98	0.12	-	17,19,21,22	0

## 6.3 Carbohydrates [i](#)

There are no carbohydrates in this entry.

## 6.4 Ligands [i](#)

In the following table, the Atoms column lists the number of modelled atoms in the group and the number defined in the chemical component dictionary. LLDF column lists the quality of electron density of the group with respect to its neighbouring residues in protein, DNA or RNA chains. The B-factors column lists the minimum, median, 95<sup>th</sup> percentile and maximum values of B factors of atoms in the group. The column labelled 'Q< 0.9' lists the number of atoms with occupancy less than 0.9.

Mol	Type	Chain	Res	Atoms	RSCC	RSR	LLDF	B-factors(Å <sup>2</sup> )	Q<0.9
5	MG	A	1001	1/1	0.92	0.18	2.77	30,30,30,30	0
4	DGT	A	914	31/31	0.96	0.12	-0.81	16,23,27,29	0
5	MG	A	1002	1/1	0.96	0.09	-	34,34,34,34	0

## 6.5 Other polymers [i](#)

There are no such residues in this entry.