



# Full wwPDB X-ray Structure Validation Report ⓘ

Jan 31, 2016 – 08:51 PM GMT

PDB ID : 1MDQ  
Title : REFINED STRUCTURES OF TWO INSERTION(SLASH)DELETION MUTANTS PROBE FUNCTION OF THE MALTODEXTRIN BINDING PROTEIN  
Authors : Sharff, A.J.; Quiococho, F.A.  
Deposited on : 1994-08-10  
Resolution : 1.90 Å(reported)

This is a Full wwPDB X-ray Structure Validation Report for a publicly released PDB entry.  
We welcome your comments at [validation@mail.wwpdb.org](mailto:validation@mail.wwpdb.org)  
A user guide is available at  
<http://wwpdb.org/validation/2016/XrayValidationReportHelp>  
with specific help available everywhere you see the ⓘ symbol.

---

The following versions of software and data (see [references ⓘ](#)) were used in the production of this report:

MolProbity : 4.02b-467  
Mogul : 1.7 (RC4), CSD as536be (2015)  
Xtriage (Phenix) : 1.9-1692  
EDS : rb-20026688  
Percentile statistics : 20151230.v01 (using entries in the PDB archive December 30th 2015)  
Refmac : 5.8.0135  
CCP4 : 6.5.0  
Ideal geometry (proteins) : Engh & Huber (2001)  
Ideal geometry (DNA, RNA) : Parkinson et al. (1996)  
Validation Pipeline (wwPDB-VP) : trunk26865

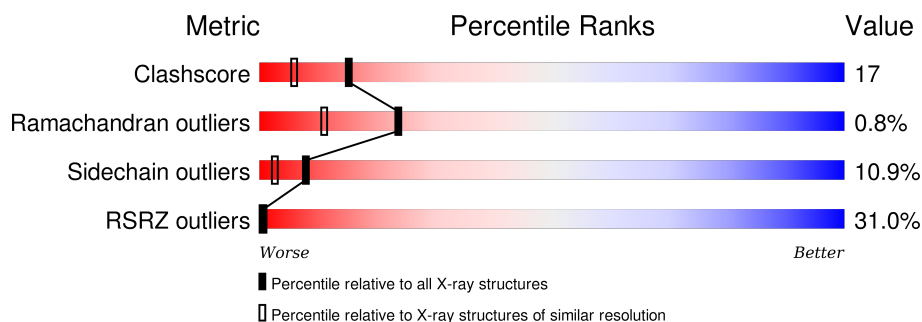
# 1 Overall quality at a glance

The following experimental techniques were used to determine the structure:

*X-RAY DIFFRACTION*

The reported resolution of this entry is 1.90 Å.

Percentile scores (ranging between 0-100) for global validation metrics of the entry are shown in the following graphic. The table shows the number of entries on which the scores are based.



Metric	Whole archive (#Entries)	Similar resolution (#Entries, resolution range(Å))
Clashscore	102246	5398 (1.90-1.90)
Ramachandran outliers	100387	5338 (1.90-1.90)
Sidechain outliers	100360	5339 (1.90-1.90)
RSRZ outliers	91569	4766 (1.90-1.90)

The table below summarises the geometric issues observed across the polymeric chains and their fit to the electron density. The red, orange, yellow and green segments on the lower bar indicate the fraction of residues that contain outliers for  $\geq 3$ , 2, 1 and 0 types of geometric quality criteria. A grey segment represents the fraction of residues that are not modelled. The numeric value for each fraction is indicated below the corresponding segment, with a dot representing fractions  $\leq 5\%$ . The upper red bar (where present) indicates the fraction of residues that have poor fit to the electron density. The numeric value is given above the bar.

Mol	Chain	Length	Quality of chain
1	A	371	<div> <div>31%</div> <div>59%</div> <div>35%</div> <div>5%</div> </div>

The following table lists non-polymeric compounds, carbohydrate monomers and non-standard residues in protein, DNA, RNA chains that are outliers for geometric or electron-density-fit criteria:

Mol	Type	Chain	Res	Chirality	Geometry	Clashes	Electron density
2	MAL	A	372	X	-	-	-

## 2 Entry composition [i](#)

There are 3 unique types of molecules in this entry. The entry contains 2998 atoms, of which 0 are hydrogens and 0 are deuteriums.

In the tables below, the ZeroOcc column contains the number of atoms modelled with zero occupancy, the AltConf column contains the number of residues with at least one atom in alternate conformation and the Trace column contains the number of residues modelled with at most 2 atoms.

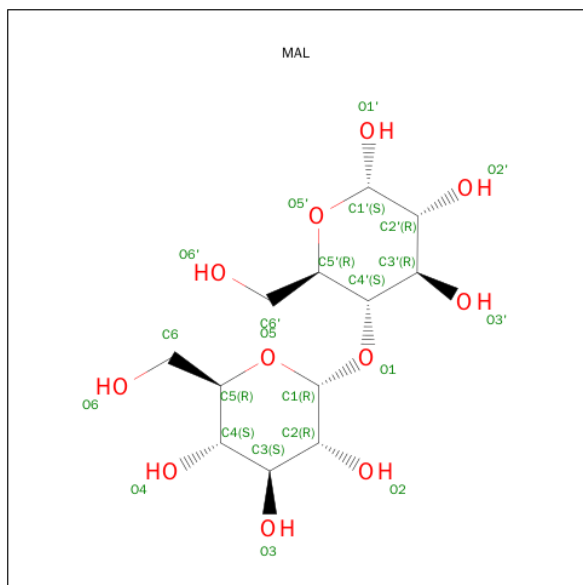
- Molecule 1 is a protein called MALTODEXTRIN BINDING PROTEIN.

Mol	Chain	Residues	Atoms					ZeroOcc	AltConf	Trace
1	A	371	Total	C	N	O	S	0	0	0
			2867	1845	469	547	6			

There are 2 discrepancies between the modelled and reference sequences:

Chain	Residue	Modelled	Actual	Comment	Reference
A	300	GLY	-	INSERTION	UNP P02928
A	302	SER	ALA	CONFLICT	UNP P02928

- Molecule 2 is SUGAR (MALTOSE) (three-letter code: MAL) (formula: C<sub>12</sub>H<sub>22</sub>O<sub>11</sub>).



Mol	Chain	Residues	Atoms			ZeroOcc	AltConf
2	A	1	Total	C	O	0	0
			23	12	11		

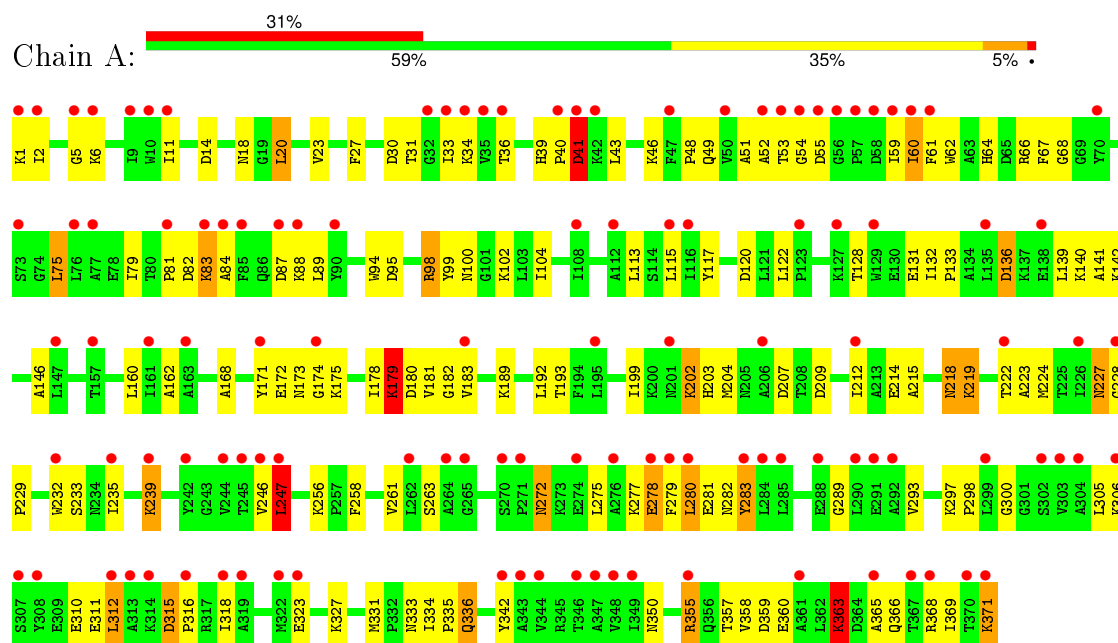
- Molecule 3 is water.

Mol	Chain	Residues	Atoms		ZeroOcc	AltConf
3	A	108	Total 108	O 108	0	0

### 3 Residue-property plots [i](#)

These plots are drawn for all protein, RNA and DNA chains in the entry. The first graphic for a chain summarises the proportions of errors displayed in the second graphic. The second graphic shows the sequence view annotated by issues in geometry and electron density. Residues are color-coded according to the number of geometric quality criteria for which they contain at least one outlier: green = 0, yellow = 1, orange = 2 and red = 3 or more. A red dot above a residue indicates a poor fit to the electron density ( $\text{RSRZ} > 2$ ). Stretches of 2 or more consecutive residues without any outlier are shown as a green connector. Residues present in the sample, but not in the model, are shown in grey.

#### • Molecule 1: MALTODEXTRIN BINDING PROTEIN



## 4 Data and refinement statistics

Property	Value	Source
Space group	C 1 2 1	Depositor
Cell constants a, b, c, $\alpha$ , $\beta$ , $\gamma$	106.01Å 66.46Å 57.75Å 90.00° 113.17° 90.00°	Depositor
Resolution (Å)	10.00 – 1.90 23.02 – 1.85	Depositor EDS
% Data completeness (in resolution range)	(Not available) (10.00-1.90) 79.3 (23.02-1.85)	Depositor EDS
$R_{merge}$	(Not available)	Depositor
$R_{sym}$	(Not available)	Depositor
$\langle I/\sigma(I) \rangle$ <sup>1</sup>	1.47 (at 1.85Å)	Xtriage
Refinement program	PROLSQ, X-PLOR	Depositor
R, $R_{free}$	0.220 , (Not available) 0.275 , (Not available)	Depositor DCC
$R_{free}$ test set	No test flags present.	DCC
Wilson B-factor (Å <sup>2</sup> )	28.4	Xtriage
Anisotropy	0.323	Xtriage
Bulk solvent $k_{sol}$ (e/Å <sup>3</sup> ), $B_{sol}$ (Å <sup>2</sup> )	0.39 , 77.3	EDS
Estimated twinning fraction	No twinning to report.	Xtriage
L-test for twinning <sup>2</sup>	$\langle  L  \rangle = 0.50$ , $\langle L^2 \rangle = 0.34$	Xtriage
Outliers	1 of 25211 reflections (0.004%)	Xtriage
$F_o, F_c$ correlation	0.91	EDS
Total number of atoms	2998	wwPDB-VP
Average B, all atoms (Å <sup>2</sup> )	34.0	wwPDB-VP

Xtriage's analysis on translational NCS is as follows: *The largest off-origin peak in the Patterson function is 6.94% of the height of the origin peak. No significant pseudotranslation is detected.*

<sup>1</sup>Intensities estimated from amplitudes.

<sup>2</sup>Theoretical values of  $\langle |L| \rangle$ ,  $\langle L^2 \rangle$  for acentric reflections are 0.5, 0.375 respectively for untwinned datasets, and 0.333, 0.2 for perfectly twinned datasets.

## 5 Model quality

### 5.1 Standard geometry

Bond lengths and bond angles in the following residue types are not validated in this section: MAL

The Z score for a bond length (or angle) is the number of standard deviations the observed value is removed from the expected value. A bond length (or angle) with  $|Z| > 5$  is considered an outlier worth inspection. RMSZ is the root-mean-square of all Z scores of the bond lengths (or angles).

Mol	Chain	Bond lengths		Bond angles	
		RMSZ	$\# Z  > 5$	RMSZ	$\# Z  > 5$
1	A	0.83	0/2936	1.45	21/3985 (0.5%)

There are no bond length outliers.

All (21) bond angle outliers are listed below:

Mol	Chain	Res	Type	Atoms	Z	Observed(°)	Ideal(°)
1	A	14	ASP	CB-CG-OD1	9.83	127.14	118.30
1	A	120	ASP	CB-CG-OD2	9.18	126.56	118.30
1	A	355	ARG	NE-CZ-NH2	7.39	124.00	120.30
1	A	363	LYS	N-CA-CB	7.09	123.37	110.60
1	A	283	TYR	CB-CG-CD2	7.03	125.22	121.00
1	A	283	TYR	CB-CG-CD1	-6.18	117.29	121.00
1	A	312	LEU	CA-CB-CG	6.07	129.25	115.30
1	A	30	ASP	CB-CG-OD1	5.79	123.51	118.30
1	A	222	THR	N-CA-CB	5.69	121.11	110.30
1	A	218	ASN	CB-CA-C	5.68	121.77	110.40
1	A	95	ASP	CB-CG-OD1	5.61	123.35	118.30
1	A	180	ASP	CB-CG-OD1	5.57	123.31	118.30
1	A	214	GLU	CG-CD-OE2	-5.51	107.28	118.30
1	A	247	LEU	CA-CB-CG	5.45	127.83	115.30
1	A	179	LYS	CA-CB-CG	5.31	125.09	113.40
1	A	41	ASP	N-CA-CB	5.31	120.16	110.60
1	A	315	ASP	CB-CG-OD1	5.26	123.04	118.30
1	A	95	ASP	CB-CG-OD2	-5.26	113.57	118.30
1	A	98	ARG	N-CA-CB	5.07	119.72	110.60
1	A	136	ASP	CB-CG-OD1	5.07	122.86	118.30
1	A	41	ASP	CA-CB-CG	5.02	124.45	113.40

There are no chirality outliers.

There are no planarity outliers.

## 5.2 Too-close contacts ⓘ

In the following table, the Non-H and H(model) columns list the number of non-hydrogen atoms and hydrogen atoms in the chain respectively. The H(added) column lists the number of hydrogen atoms added and optimized by MolProbity. The Clashes column lists the number of clashes within the asymmetric unit, whereas Symm-Clashes lists symmetry related clashes.

Mol	Chain	Non-H	H(model)	H(added)	Clashes	Symm-Clashes
1	A	2867	0	2831	96	11
2	A	23	0	21	4	0
3	A	108	0	0	4	2
All	All	2998	0	2852	100	11

The all-atom clashscore is defined as the number of clashes found per 1000 atoms (including hydrogen atoms). The all-atom clashscore for this structure is 17.

All (100) close contacts within the same asymmetric unit are listed below, sorted by their clash magnitude.

Atom-1	Atom-2	Interatomic distance (Å)	Clash overlap (Å)
2:A:372:MAL:C1'	2:A:372:MAL:O5'	1.72	1.37
2:A:372:MAL:O5'	2:A:372:MAL:O1'	1.76	1.02
2:A:372:MAL:C1'	2:A:372:MAL:C5'	2.39	0.99
1:A:202:LYS:HA	1:A:202:LYS:HE3	1.49	0.92
1:A:199:ILE:HD13	1:A:204:MET:HB3	1.59	0.85
1:A:64:HIS:HD2	1:A:261:VAL:H	1.30	0.80
1:A:229:PRO:HG2	1:A:300:GLY:HA2	1.65	0.77
1:A:122:LEU:HD12	1:A:223:ALA:HB1	1.70	0.73
1:A:189:LYS:O	1:A:193:THR:HG23	1.90	0.72
1:A:27:PHE:HD1	1:A:283:TYR:HD2	1.37	0.72
1:A:23:VAL:HG12	1:A:279:PHE:HE1	1.55	0.71
1:A:218:ASN:HD21	1:A:235:ILE:HG12	1.55	0.71
1:A:5:GLY:O	1:A:33:ILE:HG23	1.90	0.71
1:A:359:ASP:O	1:A:363:LYS:HG3	1.91	0.71
2:A:372:MAL:C2'	2:A:372:MAL:O5'	2.40	0.69
1:A:202:LYS:HA	1:A:202:LYS:CE	2.25	0.65
1:A:64:HIS:CD2	1:A:261:VAL:H	2.17	0.60
1:A:277:LYS:O	1:A:281:GLU:HG3	2.02	0.60
1:A:48:PRO:HA	1:A:75:LEU:HD13	1.83	0.60
1:A:41:ASP:O	1:A:46:LYS:HD2	2.02	0.59
1:A:64:HIS:HE1	1:A:331:MET:O	1.85	0.59
1:A:68:GLY:HA3	1:A:333:ASN:O	2.02	0.59
1:A:23:VAL:HG12	1:A:279:PHE:CE1	2.36	0.58
1:A:82:ASP:O	1:A:84:ALA:N	2.36	0.58

*Continued on next page...*



*Continued from previous page...*

Atom-1	Atom-2	Interatomic distance (Å)	Clash overlap (Å)
1:A:182:GLY:HA2	3:A:489:HOH:O	2.05	0.57
1:A:136:ASP:HB3	1:A:203:HIS:HD2	1.71	0.56
1:A:27:PHE:HD1	1:A:283:TYR:CD2	2.20	0.56
1:A:199:ILE:CD1	1:A:204:MET:HB3	2.34	0.55
1:A:27:PHE:CD1	1:A:283:TYR:HD2	2.23	0.54
1:A:6:LYS:HZ3	1:A:34:LYS:HG3	1.72	0.54
1:A:52:ALA:C	1:A:54:GLY:H	2.11	0.54
1:A:67:PHE:CE2	1:A:263:SER:HB2	2.42	0.54
1:A:79:ILE:HD12	1:A:81:PRO:HD3	1.88	0.54
1:A:83:LYS:HG3	1:A:83:LYS:O	2.08	0.54
1:A:278:GLU:O	1:A:282:ASN:HB2	2.08	0.54
1:A:246:VAL:HG12	1:A:247:LEU:O	2.08	0.53
1:A:178:ILE:HG13	1:A:179:LYS:HD2	1.91	0.52
1:A:128:THR:OG1	1:A:131:GLU:HG2	2.08	0.52
1:A:141:ALA:O	1:A:142:LYS:HG2	2.09	0.52
1:A:59:ILE:HD13	1:A:280:LEU:HD13	1.92	0.52
1:A:67:PHE:HB3	1:A:104:ILE:HD12	1.92	0.51
1:A:209:ASP:OD1	1:A:212:ILE:HG13	2.10	0.51
1:A:136:ASP:O	1:A:140:LYS:HB2	2.11	0.50
1:A:162:ALA:O	1:A:256:LYS:HD2	2.12	0.50
1:A:360:GLU:HA	1:A:363:LYS:HE3	1.92	0.49
1:A:365:ALA:O	1:A:369:ILE:HG13	2.12	0.49
1:A:132:ILE:N	1:A:133:PRO:CD	2.75	0.49
1:A:360:GLU:HA	1:A:363:LYS:CE	2.43	0.48
1:A:334:ILE:HD12	1:A:336:GLN:HG2	1.94	0.48
1:A:1:LYS:HA	1:A:55:ASP:HB3	1.96	0.48
1:A:122:LEU:HD12	1:A:223:ALA:CB	2.41	0.48
1:A:60:ILE:HD12	1:A:61:PHE:N	2.29	0.48
1:A:117:TYR:HB3	1:A:224:MET:HG2	1.96	0.48
1:A:172:GLU:O	1:A:173:ASN:HB2	2.13	0.47
1:A:11:ILE:HG21	1:A:20:LEU:HD12	1.96	0.47
1:A:6:LYS:HZ3	1:A:6:LYS:HB2	1.79	0.47
1:A:136:ASP:HB3	1:A:203:HIS:CD2	2.49	0.47
1:A:88:LYS:O	1:A:306:LYS:HG3	2.15	0.47
1:A:48:PRO:HA	1:A:75:LEU:CD1	2.44	0.47
1:A:256:LYS:HE2	3:A:393:HOH:O	2.14	0.47
1:A:272:ASN:HB2	1:A:275:LEU:HD13	1.97	0.47
1:A:300:GLY:O	1:A:318:ILE:HD12	2.15	0.46
1:A:34:LYS:HE2	1:A:36:THR:OG1	2.15	0.46
1:A:89:LEU:HD22	1:A:94:TRP:CZ2	2.51	0.46
1:A:297:LYS:HE2	3:A:457:HOH:O	2.14	0.46

*Continued on next page...*

Continued from previous page...

Atom-1	Atom-2	Interatomic distance (Å)	Clash overlap (Å)
1:A:18:ASN:HD22	1:A:18:ASN:HA	1.62	0.46
1:A:171:TYR:OH	1:A:174:GLY:HA2	2.15	0.46
1:A:6:LYS:NZ	1:A:34:LYS:HG3	2.31	0.45
1:A:168:ALA:O	1:A:181:VAL:HA	2.15	0.45
1:A:239:LYS:NZ	1:A:239:LYS:HB3	2.30	0.45
1:A:51:ALA:HA	1:A:55:ASP:O	2.17	0.45
1:A:215:ALA:O	1:A:219:LYS:HB2	2.16	0.45
1:A:11:ILE:O	1:A:39:HIS:HA	2.18	0.44
1:A:136:ASP:OD2	1:A:203:HIS:HD2	2.00	0.44
1:A:371:LYS:HD2	1:A:371:LYS:HA	1.59	0.44
1:A:82:ASP:OD2	1:A:84:ALA:HB3	2.17	0.44
1:A:31:THR:HG22	1:A:33:ILE:H	1.83	0.43
1:A:289:GLY:O	1:A:293:VAL:HG23	2.18	0.43
1:A:315:ASP:OD1	1:A:316:PRO:HD2	2.18	0.43
1:A:132:ILE:HD12	1:A:224:MET:HE1	2.01	0.43
1:A:82:ASP:C	1:A:84:ALA:N	2.72	0.43
1:A:323:GLU:O	1:A:327:LYS:HD3	2.19	0.43
1:A:342:TYR:CE2	1:A:368:ARG:NH2	2.86	0.43
1:A:62:TRP:CD1	1:A:66:ARG:HG3	2.54	0.43
1:A:227:ASN:HD22	1:A:228:GLY:H	1.66	0.42
1:A:336:GLN:HB3	3:A:441:HOH:O	2.19	0.42
1:A:39:HIS:N	1:A:40:PRO:HD3	2.35	0.42
1:A:146:ALA:O	1:A:224:MET:HE2	2.19	0.42
1:A:98:ARG:HA	1:A:102:LYS:O	2.20	0.42
1:A:202:LYS:HE3	1:A:202:LYS:CA	2.32	0.42
1:A:193:THR:HG23	1:A:358:VAL:HG11	2.02	0.41
1:A:357:THR:OG1	1:A:360:GLU:HG3	2.20	0.41
1:A:6:LYS:HB2	1:A:6:LYS:NZ	2.35	0.41
1:A:342:TYR:HE2	1:A:368:ARG:NH2	2.18	0.41
1:A:59:ILE:HD13	1:A:280:LEU:CD1	2.51	0.41
1:A:334:ILE:HA	1:A:335:PRO:HD3	1.91	0.41
1:A:60:ILE:HD12	1:A:61:PHE:H	1.85	0.41
1:A:232:TRP:HB2	1:A:298:PRO:HG2	2.02	0.41
1:A:79:ILE:O	1:A:79:ILE:HG13	2.21	0.40
1:A:323:GLU:HG3	1:A:327:LYS:HE2	2.04	0.40

All (11) symmetry-related close contacts are listed below. The label for Atom-2 includes the symmetry operator and encoded unit-cell translations to be applied.

Atom-1	Atom-2	Interatomic distance (Å)	Clash overlap (Å)
1:A:140:LYS:NZ	3:A:488:HOH:O[4_556]	1.36	0.84

Continued on next page...

Continued from previous page...

Atom-1	Atom-2	Interatomic distance (Å)	Clash overlap (Å)
1:A:239:LYS:CA	1:A:355:ARG:NH2[4_546]	1.38	0.82
1:A:239:LYS:CD	1:A:350:ASN:ND2[4_546]	1.44	0.76
1:A:239:LYS:CE	1:A:350:ASN:ND2[4_546]	1.63	0.57
1:A:100:ASN:ND2	1:A:310:GLU:OE1[4_557]	1.67	0.53
1:A:235:ILE:O	1:A:355:ARG:NH1[4_546]	1.72	0.48
1:A:99:TYR:OH	1:A:310:GLU:OE2[4_557]	1.91	0.29
1:A:239:LYS:NZ	1:A:350:ASN:ND2[4_546]	2.04	0.16
1:A:239:LYS:C	1:A:355:ARG:NH2[4_546]	2.08	0.12
1:A:83:LYS:NZ	3:A:433:HOH:O[4_547]	2.17	0.03
1:A:207:ASP:CG	1:A:316:PRO:CG[4_556]	2.18	0.02

## 5.3 Torsion angles [i](#)

### 5.3.1 Protein backbone [i](#)

In the following table, the Percentiles column shows the percent Ramachandran outliers of the chain as a percentile score with respect to all X-ray entries followed by that with respect to entries of similar resolution.

The Analysed column shows the number of residues for which the backbone conformation was analysed, and the total number of residues.

Mol	Chain	Analysed	Favoured	Allowed	Outliers	Percentiles
1	A	369/371 (100%)	349 (95%)	17 (5%)	3 (1%)	24 11

All (3) Ramachandran outliers are listed below:

Mol	Chain	Res	Type
1	A	2	ILE
1	A	83	LYS
1	A	53	THR

### 5.3.2 Protein sidechains [i](#)

In the following table, the Percentiles column shows the percent sidechain outliers of the chain as a percentile score with respect to all X-ray entries followed by that with respect to entries of similar resolution.

The Analysed column shows the number of residues for which the sidechain conformation was analysed, and the total number of residues.

Mol	Chain	Analysed	Rotameric	Outliers	Percentiles
1	A	293/298 (98%)	261 (89%)	32 (11%)	8 2

All (32) residues with a non-rotameric sidechain are listed below:

Mol	Chain	Res	Type
1	A	20	LEU
1	A	41	ASP
1	A	43	LEU
1	A	49	GLN
1	A	60	ILE
1	A	75	LEU
1	A	87	ASP
1	A	113	LEU
1	A	115	LEU
1	A	139	LEU
1	A	160	LEU
1	A	175	LYS
1	A	179	LYS
1	A	183	VAL
1	A	192	LEU
1	A	202	LYS
1	A	219	LYS
1	A	227	ASN
1	A	233	SER
1	A	239	LYS
1	A	247	LEU
1	A	258	PHE
1	A	272	ASN
1	A	278	GLU
1	A	280	LEU
1	A	305	LEU
1	A	311	GLU
1	A	312	LEU
1	A	336	GLN
1	A	363	LYS
1	A	366	GLN
1	A	371	LYS

Some sidechains can be flipped to improve hydrogen bonding and reduce clashes. All (7) such sidechains are listed below:

Mol	Chain	Res	Type
1	A	12	ASN

*Continued on next page...*

*Continued from previous page...*

Mol	Chain	Res	Type
1	A	18	ASN
1	A	64	HIS
1	A	201	ASN
1	A	203	HIS
1	A	218	ASN
1	A	227	ASN

### 5.3.3 RNA ⓘ

There are no RNA molecules in this entry.

## 5.4 Non-standard residues in protein, DNA, RNA chains ⓘ

There are no non-standard protein/DNA/RNA residues in this entry.

## 5.5 Carbohydrates ⓘ

There are no carbohydrates in this entry.

## 5.6 Ligand geometry ⓘ

1 ligand is modelled in this entry.

In the following table, the Counts columns list the number of bonds (or angles) for which Mogul statistics could be retrieved, the number of bonds (or angles) that are observed in the model and the number of bonds (or angles) that are defined in the chemical component dictionary. The Link column lists molecule types, if any, to which the group is linked. The Z score for a bond length (or angle) is the number of standard deviations the observed value is removed from the expected value. A bond length (or angle) with  $|Z| > 2$  is considered an outlier worth inspection. RMSZ is the root-mean-square of all Z scores of the bond lengths (or angles).

Mol	Type	Chain	Res	Link	Bond lengths			Bond angles		
					Counts	RMSZ	$\# Z  > 2$	Counts	RMSZ	$\# Z  > 2$
2	MAL	A	372	-	24,24,24	3.29	2 (8%)	35,35,35	3.53	6 (17%)

In the following table, the Chirals column lists the number of chiral outliers, the number of chiral centers analysed, the number of these observed in the model and the number defined in the chemical component dictionary. Similar counts are reported in the Torsion and Rings columns. '-' means no outliers of that kind were identified.

Mol	Type	Chain	Res	Link	Chirals	Torsions	Rings
2	MAL	A	372	-	1/1/10/10	0/8/48/48	0/2/2/2

All (2) bond length outliers are listed below:

Mol	Chain	Res	Type	Atoms	Z	Observed(Å)	Ideal(Å)
2	A	372	MAL	O1'-C1'	-2.68	1.29	1.39
2	A	372	MAL	O5'-C1'	15.53	1.72	1.43

All (6) bond angle outliers are listed below:

Mol	Chain	Res	Type	Atoms	Z	Observed(°)	Ideal(°)
2	A	372	MAL	O1'-C1'-O5'	-14.69	70.07	110.25
2	A	372	MAL	O5'-C1'-C2'	-9.48	94.68	109.80
2	A	372	MAL	C1'-O5'-C5'	-8.18	98.34	113.47
2	A	372	MAL	C1'-C2'-C3'	-5.43	102.35	110.43
2	A	372	MAL	O1'-C1'-C2'	-3.51	99.80	109.21
2	A	372	MAL	O2'-C2'-C3'	2.45	115.85	110.34

All (1) chirality outliers are listed below:

Mol	Chain	Res	Type	Atom
2	A	372	MAL	C1'

There are no torsion outliers.

There are no ring outliers.

1 monomer is involved in 4 short contacts:

Mol	Chain	Res	Type	Clashes	Symm-Clashes
2	A	372	MAL	4	0

## 5.7 Other polymers ⓘ

There are no such residues in this entry.

## 5.8 Polymer linkage issues ⓘ

There are no chain breaks in this entry.

## 6 Fit of model and data ⓘ

### 6.1 Protein, DNA and RNA chains ⓘ

In the following table, the column labelled ‘#RSRZ> 2’ contains the number (and percentage) of RSRZ outliers, followed by percent RSRZ outliers for the chain as percentile scores relative to all X-ray entries and entries of similar resolution. The OWAB column contains the minimum, median, 95<sup>th</sup> percentile and maximum values of the occupancy-weighted average B-factor per residue. The column labelled ‘Q< 0.9’ lists the number of (and percentage) of residues with an average occupancy less than 0.9.

Mol	Chain	Analysed	<RSRZ>	#RSRZ>2	OWAB(Å <sup>2</sup> )	Q<0.9
1	A	371/371 (100%)	1.56	115 (30%) 1 0	14, 32, 60, 92	0

All (115) RSRZ outliers are listed below:

Mol	Chain	Res	Type	RSRZ
1	A	84	ALA	9.6
1	A	1	LYS	8.0
1	A	319	ALA	7.4
1	A	313	ALA	6.4
1	A	2	ILE	5.3
1	A	50	VAL	4.8
1	A	274	GLU	4.3
1	A	108	ILE	4.2
1	A	59	ILE	4.2
1	A	41	ASP	4.2
1	A	316	PRO	4.1
1	A	53	THR	4.1
1	A	87	ASP	3.9
1	A	61	PHE	3.9
1	A	135	LEU	3.8
1	A	83	LYS	3.8
1	A	174	GLY	3.8
1	A	367	THR	3.8
1	A	244	VAL	3.7
1	A	40	PRO	3.7
1	A	60	ILE	3.7
1	A	52	ALA	3.6
1	A	116	ILE	3.6
1	A	33	ILE	3.6
1	A	285	LEU	3.5
1	A	318	ILE	3.5
1	A	81	PRO	3.5

*Continued on next page...*

*Continued from previous page...*

Mol	Chain	Res	Type	RSRZ
1	A	308	TYR	3.4
1	A	314	LYS	3.4
1	A	342	TYR	3.4
1	A	355	ARG	3.3
1	A	284	LEU	3.3
1	A	371	LYS	3.3
1	A	55	ASP	3.3
1	A	73	SER	3.2
1	A	312	LEU	3.2
1	A	10	TRP	3.1
1	A	54	GLY	3.1
1	A	365	ALA	3.1
1	A	57	PRO	3.1
1	A	264	ALA	3.1
1	A	368	ARG	3.1
1	A	239	LYS	3.1
1	A	129	TRP	3.1
1	A	232	TRP	3.0
1	A	288	GLU	3.0
1	A	9	ILE	3.0
1	A	361	ALA	3.0
1	A	302	SER	3.0
1	A	212	ILE	3.0
1	A	226	ILE	3.0
1	A	291	GLU	2.9
1	A	246	VAL	2.9
1	A	32	GLY	2.9
1	A	349	ILE	2.9
1	A	283	TYR	2.9
1	A	279	PHE	2.8
1	A	303	VAL	2.8
1	A	76	LEU	2.7
1	A	183	VAL	2.7
1	A	70	TYR	2.7
1	A	90	TYR	2.7
1	A	171	TYR	2.7
1	A	307	SER	2.7
1	A	161	ILE	2.6
1	A	348	VAL	2.6
1	A	47	PHE	2.6
1	A	262	LEU	2.6
1	A	127	LYS	2.6

*Continued on next page...*



*Continued from previous page...*

Mol	Chain	Res	Type	RSRZ
1	A	346	THR	2.6
1	A	270	SER	2.6
1	A	235	ILE	2.6
1	A	35	VAL	2.6
1	A	323	GLU	2.6
1	A	271	PRO	2.5
1	A	228	GLY	2.5
1	A	5	GLY	2.5
1	A	85	PHE	2.4
1	A	278	GLU	2.4
1	A	36	THR	2.4
1	A	77	ALA	2.4
1	A	123	PRO	2.4
1	A	157	THR	2.4
1	A	147	LEU	2.4
1	A	6	LYS	2.3
1	A	290	LEU	2.3
1	A	112	ALA	2.3
1	A	292	ALA	2.3
1	A	343	ALA	2.3
1	A	245	THR	2.3
1	A	201	ASN	2.3
1	A	56	GLY	2.3
1	A	242	TYR	2.3
1	A	222	THR	2.2
1	A	42	LYS	2.2
1	A	276	ALA	2.2
1	A	304	ALA	2.2
1	A	265	GLY	2.2
1	A	306	LYS	2.2
1	A	163	ALA	2.2
1	A	206	ALA	2.1
1	A	247	LEU	2.1
1	A	344	VAL	2.1
1	A	322	MET	2.1
1	A	11	ILE	2.1
1	A	88	LYS	2.1
1	A	195	LEU	2.1
1	A	280	LEU	2.1
1	A	299	LEU	2.1
1	A	347	ALA	2.1
1	A	370	THR	2.1

*Continued on next page...*

*Continued from previous page...*

Mol	Chain	Res	Type	RSRZ
1	A	138	GLU	2.0
1	A	115	LEU	2.0
1	A	34	LYS	2.0
1	A	58	ASP	2.0

## 6.2 Non-standard residues in protein, DNA, RNA chains [i](#)

There are no non-standard protein/DNA/RNA residues in this entry.

## 6.3 Carbohydrates [i](#)

There are no carbohydrates in this entry.

## 6.4 Ligands [i](#)

In the following table, the Atoms column lists the number of modelled atoms in the group and the number defined in the chemical component dictionary. LLDF column lists the quality of electron density of the group with respect to its neighbouring residues in protein, DNA or RNA chains. The B-factors column lists the minimum, median, 95<sup>th</sup> percentile and maximum values of B factors of atoms in the group. The column labelled 'Q< 0.9' lists the number of atoms with occupancy less than 0.9.

Mol	Type	Chain	Res	Atoms	RSCC	RSR	LLDF	B-factors( $\text{\AA}^2$ )	Q<0.9
2	MAL	A	372	23/23	0.90	0.12	-0.96	16,18,22,24	0

## 6.5 Other polymers [i](#)

There are no such residues in this entry.