



wwPDB X-ray Structure Validation Summary Report ⓘ

Feb 1, 2016 – 06:43 PM GMT

PDB ID : 4MGR
Title : The crystal structure of Bacillus subtilis GabR, an autorepressor and PLP- and GABA-dependent transcriptional activator of gabT
Authors : Wu, R.; Edayathumangalam, R.; Garcia, R.; Wang, Y.; Wang, W.; Kreinbring, C.A.; Bach, A.; Liao, J.; Stone, T.; Terwilliger, T.; Hoang, Q.Q.; Belitsky, B.R.; Petsko, G.A.; Ringe, D.; Liu, D.
Deposited on : 2013-08-28
Resolution : 2.55 Å(reported)

This is a wwPDB X-ray Structure Validation Summary Report for a publicly released PDB entry.

We welcome your comments at validation@mail.wwpdb.org

A user guide is available at

<http://wwpdb.org/validation/2016/XrayValidationReportHelp>

with specific help available everywhere you see the ⓘ symbol.

The following versions of software and data (see [references ⓘ](#)) were used in the production of this report:

MolProbity	:	4.02b-467
Mogul	:	1.7 (RC4), CSD as536be (2015)
Xtriage (Phenix)	:	1.9-1692
EDS	:	rb-20026688
Percentile statistics	:	20151230.v01 (using entries in the PDB archive December 30th 2015)
Refmac	:	5.8.0135
CCP4	:	6.5.0
Ideal geometry (proteins)	:	Engh & Huber (2001)
Ideal geometry (DNA, RNA)	:	Parkinson et al. (1996)
Validation Pipeline (wwPDB-VP)	:	trunk26865

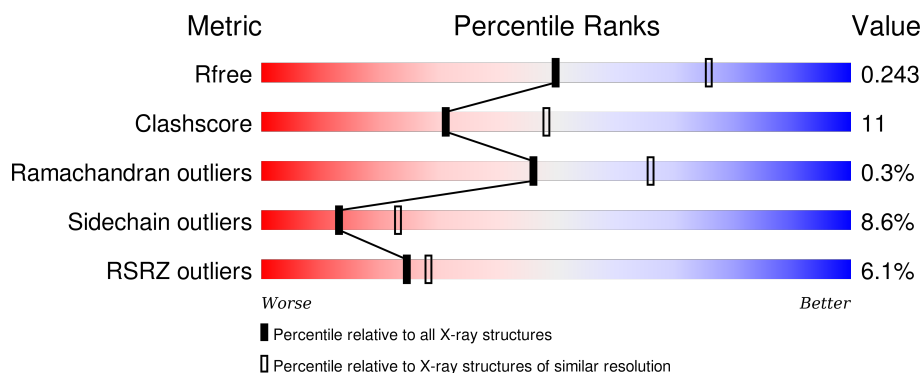
1 Overall quality at a glance

The following experimental techniques were used to determine the structure:

X-RAY DIFFRACTION

The reported resolution of this entry is 2.55 Å.

Percentile scores (ranging between 0-100) for global validation metrics of the entry are shown in the following graphic. The table shows the number of entries on which the scores are based.



Metric	Whole archive (#Entries)	Similar resolution (#Entries, resolution range(Å))
R_{free}	91344	4549 (2.58-2.50)
Clashscore	102246	5292 (2.58-2.50)
Ramachandran outliers	100387	5194 (2.58-2.50)
Sidechain outliers	100360	5196 (2.58-2.50)
RSRZ outliers	91569	4561 (2.58-2.50)

The table below summarises the geometric issues observed across the polymeric chains and their fit to the electron density. The red, orange, yellow and green segments on the lower bar indicate the fraction of residues that contain outliers for ≥ 3 , 2, 1 and 0 types of geometric quality criteria. A grey segment represents the fraction of residues that are not modelled. The numeric value for each fraction is indicated below the corresponding segment, with a dot representing fractions $\leq 5\%$. The upper red bar (where present) indicates the fraction of residues that have poor fit to the electron density. The numeric value is given above the bar.

Mol	Chain	Length	Quality of chain
1	A	485	<div> <div>9%</div> <div>67%</div> <div>25%</div> <div>• •</div> </div>
1	B	485	<div> <div>6%</div> <div>68%</div> <div>24%</div> <div>• 5%</div> </div>
1	C	485	<div> <div>4%</div> <div>72%</div> <div>23%</div> <div>• •</div> </div>
1	D	485	<div> <div>5%</div> <div>71%</div> <div>24%</div> <div>• •</div> </div>

The following table lists non-polymeric compounds, carbohydrate monomers and non-standard

residues in protein, DNA, RNA chains that are outliers for geometric or electron-density-fit criteria:

Mol	Type	Chain	Res	Chirality	Geometry	Clashes	Electron density
4	ACT	B	503	-	-	X	X
4	ACT	B	505	-	-	-	X

2 Entry composition

There are 5 unique types of molecules in this entry. The entry contains 15770 atoms, of which 0 are hydrogens and 0 are deuteriums.

In the tables below, the ZeroOcc column contains the number of atoms modelled with zero occupancy, the AltConf column contains the number of residues with at least one atom in alternate conformation and the Trace column contains the number of residues modelled with at most 2 atoms.

- Molecule 1 is a protein called HTH-type transcriptional regulatory protein GabR.

Mol	Chain	Residues	Atoms					ZeroOcc	AltConf	Trace
1	A	468	Total	C	N	O	S	0	0	0
			3800	2413	656	714	17			
1	B	463	Total	C	N	O	S	0	0	0
			3757	2383	652	705	17			
1	C	475	Total	C	N	O	S	0	0	0
			3855	2449	667	721	18			
1	D	472	Total	C	N	O	S	0	0	0
			3831	2432	663	718	18			

There are 24 discrepancies between the modelled and reference sequences:

Chain	Residue	Modelled	Actual	Comment	Reference
A	480	HIS	-	EXPRESSION TAG	UNP P94426
A	481	HIS	-	EXPRESSION TAG	UNP P94426
A	482	HIS	-	EXPRESSION TAG	UNP P94426
A	483	HIS	-	EXPRESSION TAG	UNP P94426
A	484	HIS	-	EXPRESSION TAG	UNP P94426
A	485	HIS	-	EXPRESSION TAG	UNP P94426
B	480	HIS	-	EXPRESSION TAG	UNP P94426
B	481	HIS	-	EXPRESSION TAG	UNP P94426
B	482	HIS	-	EXPRESSION TAG	UNP P94426
B	483	HIS	-	EXPRESSION TAG	UNP P94426
B	484	HIS	-	EXPRESSION TAG	UNP P94426
B	485	HIS	-	EXPRESSION TAG	UNP P94426
C	480	HIS	-	EXPRESSION TAG	UNP P94426
C	481	HIS	-	EXPRESSION TAG	UNP P94426
C	482	HIS	-	EXPRESSION TAG	UNP P94426
C	483	HIS	-	EXPRESSION TAG	UNP P94426
C	484	HIS	-	EXPRESSION TAG	UNP P94426
C	485	HIS	-	EXPRESSION TAG	UNP P94426
D	480	HIS	-	EXPRESSION TAG	UNP P94426
D	481	HIS	-	EXPRESSION TAG	UNP P94426
D	482	HIS	-	EXPRESSION TAG	UNP P94426

Continued on next page...

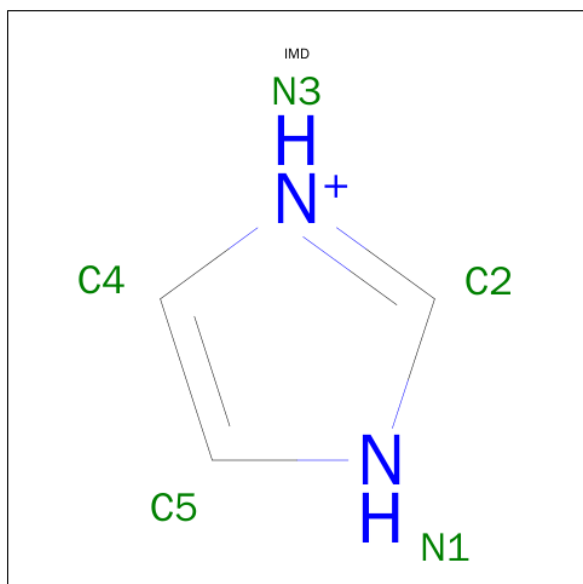
Continued from previous page...

Chain	Residue	Modelled	Actual	Comment	Reference
D	483	HIS	-	EXPRESSION TAG	UNP P94426
D	484	HIS	-	EXPRESSION TAG	UNP P94426
D	485	HIS	-	EXPRESSION TAG	UNP P94426

- Molecule 2 is ZINC ION (three-letter code: ZN) (formula: Zn).

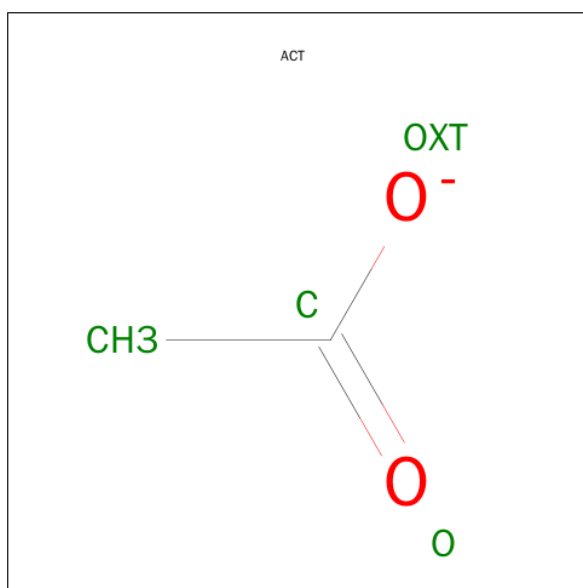
Mol	Chain	Residues	Atoms	ZeroOcc	AltConf
2	B	1	Total Zn 1 1	0	0
2	A	1	Total Zn 1 1	0	0
2	D	1	Total Zn 1 1	0	0
2	C	1	Total Zn 1 1	0	0

- Molecule 3 is IMIDAZOLE (three-letter code: IMD) (formula: C₃H₅N₂).



Mol	Chain	Residues	Atoms	ZeroOcc	AltConf
3	A	1	Total C N 5 3 2	0	0
3	B	1	Total C N 5 3 2	0	0
3	C	1	Total C N 5 3 2	0	0
3	D	1	Total C N 5 3 2	0	0

- Molecule 4 is ACETATE ION (three-letter code: ACT) (formula: $C_2H_3O_2$).



Mol	Chain	Residues	Atoms			ZeroOcc	AltConf
4	A	1	Total	C	O	0	0
			4	2	2		
4	B	1	Total	C	O	0	0
			4	2	2		
4	B	1	Total	C	O	0	0
			4	2	2		
4	B	1	Total	C	O	0	0
			4	2	2		
4	B	1	Total	C	O	0	0
			4	2	2		
4	C	1	Total	C	O	0	0
			4	2	2		
4	C	1	Total	C	O	0	0
			4	2	2		
4	D	1	Total	C	O	0	0
			4	2	2		
4	D	1	Total	C	O	0	0
			4	2	2		

- Molecule 5 is water.

Mol	Chain	Residues	Atoms		ZeroOcc	AltConf
5	A	101	Total	O	0	0
			101	101		
5	B	102	Total	O	0	0
			102	102		

Continued on next page...

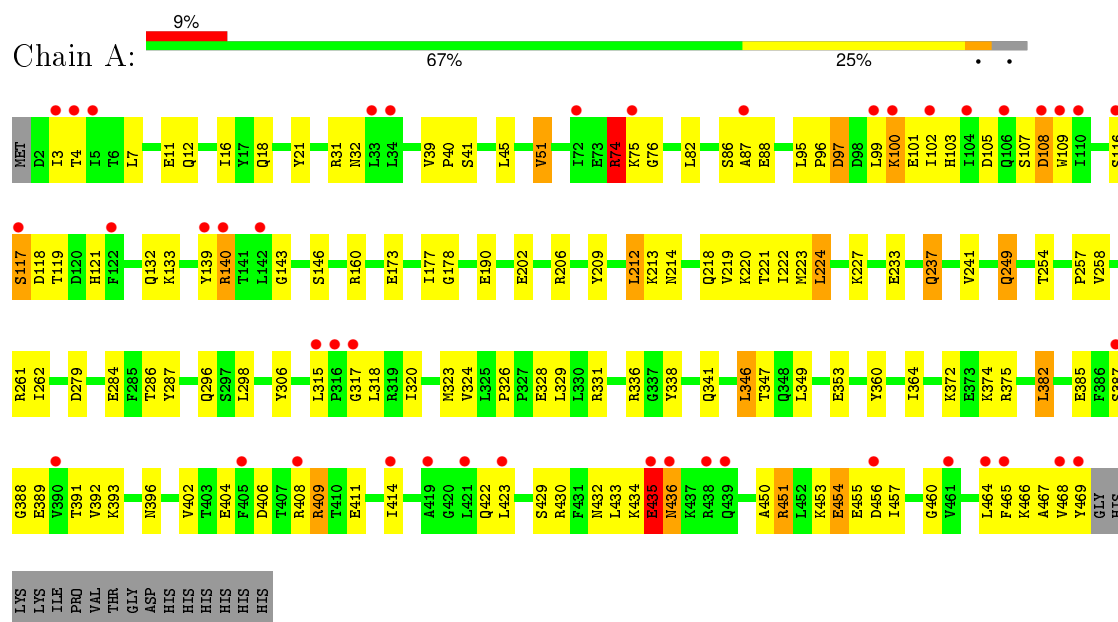
Continued from previous page...

Mol	Chain	Residues	Atoms		ZeroOcc	AltConf
5	C	134	Total 134	O 134	0	0
5	D	130	Total 130	O 130	0	0

3 Residue-property plots

These plots are drawn for all protein, RNA and DNA chains in the entry. The first graphic for a chain summarises the proportions of errors displayed in the second graphic. The second graphic shows the sequence view annotated by issues in geometry and electron density. Residues are color-coded according to the number of geometric quality criteria for which they contain at least one outlier: green = 0, yellow = 1, orange = 2 and red = 3 or more. A red dot above a residue indicates a poor fit to the electron density ($RSRZ > 2$). Stretches of 2 or more consecutive residues without any outlier are shown as a green connector. Residues present in the sample, but not in the model, are shown in grey.

- Molecule 1: HTH-type transcriptional regulatory protein GabR

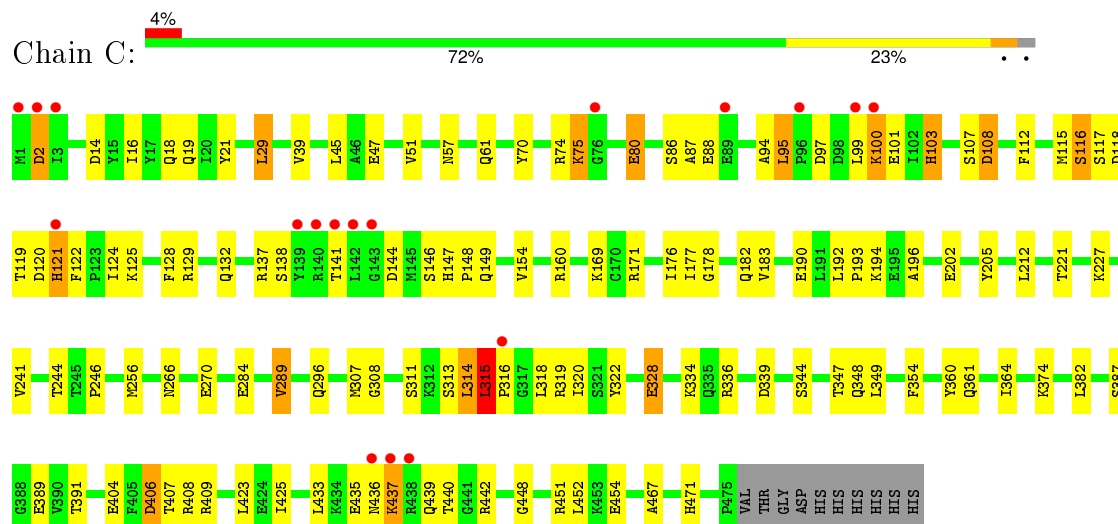


- Molecule 1: HTH-type transcriptional regulatory protein GabR

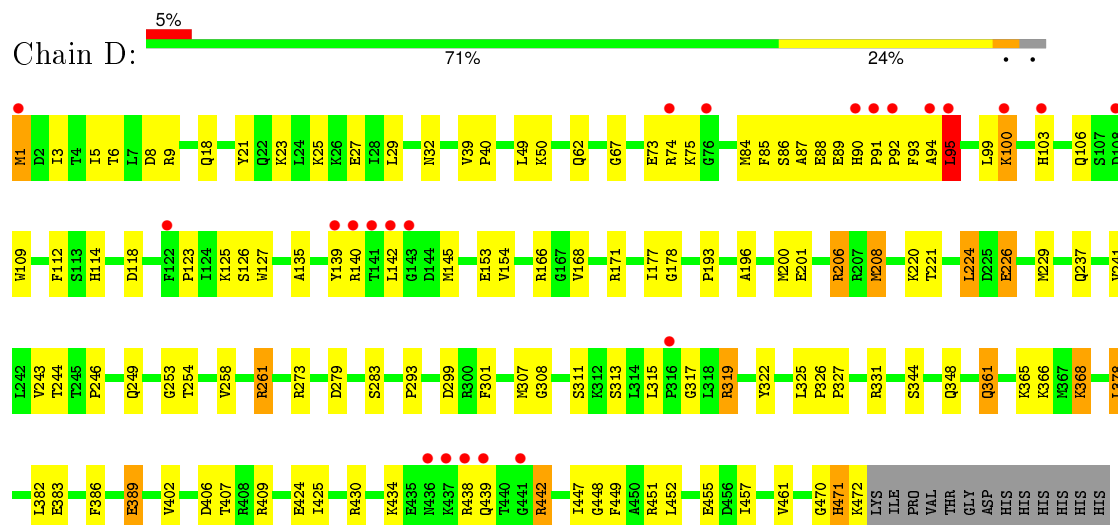


H471
H472
LYS
ILE
PRO
VAL
THR
GLY
ASP
HIS
HIS
HIS
HIS
HIS

• Molecule 1: HTH-type transcriptional regulatory protein GabR



• Molecule 1: HTH-type transcriptional regulatory protein GabR



4 Data and refinement statistics

Property	Value	Source
Space group	P 21 21 21	Depositor
Cell constants a, b, c, α , β , γ	99.93Å 101.36Å 213.20Å 90.00° 90.00° 90.00°	Depositor
Resolution (Å)	49.30 – 2.55 49.31 – 2.35	Depositor EDS
% Data completeness (in resolution range)	95.6 (49.30-2.55) 87.7 (49.31-2.35)	Depositor EDS
R_{merge}	0.12	Depositor
R_{sym}	(Not available)	Depositor
$\langle I/\sigma(I) \rangle$ ¹	1.81 (at 2.34Å)	Xtriage
Refinement program	PHENIX (phenix.refine: 1.8.2_1309)	Depositor
R, R_{free}	0.194 , 0.244 0.193 , 0.243	Depositor DCC
R_{free} test set	3327 reflections (5.07%)	DCC
Wilson B-factor (Å ²)	38.7	Xtriage
Anisotropy	0.444	Xtriage
Bulk solvent k_{sol} (e/Å ³), B_{sol} (Å ²)	0.35 , 53.1	EDS
Estimated twinning fraction	0.025 for k,h,-l	Xtriage
L-test for twinning ²	$\langle L \rangle = 0.47$, $\langle L^2 \rangle = 0.30$	Xtriage
Outliers	0 of 84452 reflections	Xtriage
F_o, F_c correlation	0.94	EDS
Total number of atoms	15770	wwPDB-VP
Average B, all atoms (Å ²)	46.0	wwPDB-VP

Xtriage's analysis on translational NCS is as follows: *The largest off-origin peak in the Patterson function is 2.76% of the height of the origin peak. No significant pseudotranslation is detected.*

¹Intensities estimated from amplitudes.

²Theoretical values of $\langle |L| \rangle$, $\langle L^2 \rangle$ for acentric reflections are 0.5, 0.375 respectively for untwinned datasets, and 0.333, 0.2 for perfectly twinned datasets.

5 Model quality

5.1 Standard geometry

Bond lengths and bond angles in the following residue types are not validated in this section: ZN, IMD, ACT

The Z score for a bond length (or angle) is the number of standard deviations the observed value is removed from the expected value. A bond length (or angle) with $|Z| > 5$ is considered an outlier worth inspection. RMSZ is the root-mean-square of all Z scores of the bond lengths (or angles).

Mol	Chain	Bond lengths		Bond angles	
		RMSZ	# Z >5	RMSZ	# Z >5
1	A	0.27	0/3876	0.55	2/5227 (0.0%)
1	B	0.26	0/3829	0.52	0/5157
1	C	0.27	0/3933	0.54	1/5302 (0.0%)
1	D	0.26	0/3908	0.52	1/5268 (0.0%)
All	All	0.26	0/15546	0.53	4/20954 (0.0%)

Chiral center outliers are detected by calculating the chiral volume of a chiral center and verifying if the center is modelled as a planar moiety or with the opposite hand. A planarity outlier is detected by checking planarity of atoms in a peptide group, atoms in a mainchain group or atoms of a sidechain that are expected to be planar.

Mol	Chain	#Chirality outliers	#Planarity outliers
1	A	0	2
1	B	0	3
1	C	0	6
All	All	0	11

There are no bond length outliers.

All (4) bond angle outliers are listed below:

Mol	Chain	Res	Type	Atoms	Z	Observed(°)	Ideal(°)
1	A	74	ARG	N-CA-C	-5.88	95.14	111.00
1	A	435	GLU	N-CA-C	5.71	126.40	111.00
1	D	95	LEU	CA-CB-CG	5.66	128.32	115.30
1	C	315	LEU	C-N-CD	5.03	138.96	128.40

There are no chirality outliers.

5 of 11 planarity outliers are listed below:

Mol	Chain	Res	Type	Group
1	A	435	GLU	Peptide
1	A	436	ASN	Peptide
1	B	314	LEU	Peptide
1	B	97	ASP	Peptide
1	B	99	LEU	Peptide

5.2 Too-close contacts ⓘ

In the following table, the Non-H and H(model) columns list the number of non-hydrogen atoms and hydrogen atoms in the chain respectively. The H(added) column lists the number of hydrogen atoms added and optimized by MolProbity. The Clashes column lists the number of clashes within the asymmetric unit, whereas Symm-Clashes lists symmetry related clashes.

Mol	Chain	Non-H	H(model)	H(added)	Clashes	Symm-Clashes
1	A	3800	0	3810	96	0
1	B	3757	0	3774	88	0
1	C	3855	0	3876	89	0
1	D	3831	0	3845	79	0
2	A	1	0	0	0	0
2	B	1	0	0	0	0
2	C	1	0	0	0	0
2	D	1	0	0	0	0
3	A	5	0	5	0	0
3	B	5	0	5	0	0
3	C	5	0	5	1	0
3	D	5	0	5	0	0
4	A	4	0	3	0	0
4	B	16	0	12	3	0
4	C	8	0	6	1	0
4	D	8	0	6	0	0
5	A	101	0	0	12	0
5	B	102	0	0	11	0
5	C	134	0	0	19	0
5	D	130	0	0	18	0
All	All	15770	0	15352	331	0

The all-atom clashscore is defined as the number of clashes found per 1000 atoms (including hydrogen atoms). The all-atom clashscore for this structure is 11.

The worst 5 of 331 close contacts within the same asymmetric unit are listed below, sorted by their clash magnitude.

Atom-1	Atom-2	Interatomic distance (Å)	Clash overlap (Å)
1:A:86:SER:O	5:A:664:HOH:O	1.90	0.91
1:C:171:ARG:NH1	5:C:730:HOH:O	2.03	0.90
4:B:503:ACT:O	5:B:663:HOH:O	1.91	0.88
1:C:284:GLU:O	5:C:606:HOH:O	1.91	0.88
1:B:75:LYS:HB3	1:B:76:GLY:HA2	1.54	0.88

There are no symmetry-related clashes.

5.3 Torsion angles [i](#)

5.3.1 Protein backbone [i](#)

In the following table, the Percentiles column shows the percent Ramachandran outliers of the chain as a percentile score with respect to all X-ray entries followed by that with respect to entries of similar resolution.

The Analysed column shows the number of residues for which the backbone conformation was analysed, and the total number of residues.

Mol	Chain	Analysed	Favoured	Allowed	Outliers	Percentiles	
1	A	466/485 (96%)	434 (93%)	30 (6%)	2 (0%)	39	60
1	B	459/485 (95%)	425 (93%)	33 (7%)	1 (0%)	52	73
1	C	473/485 (98%)	443 (94%)	29 (6%)	1 (0%)	52	73
1	D	470/485 (97%)	435 (93%)	34 (7%)	1 (0%)	52	73
All	All	1868/1940 (96%)	1737 (93%)	126 (7%)	5 (0%)	46	66

All (5) Ramachandran outliers are listed below:

Mol	Chain	Res	Type
1	B	98	ASP
1	A	435	GLU
1	A	74	ARG
1	C	88	GLU
1	D	95	LEU

5.3.2 Protein sidechains [i](#)

In the following table, the Percentiles column shows the percent sidechain outliers of the chain as a percentile score with respect to all X-ray entries followed by that with respect to entries of similar resolution.

The Analysed column shows the number of residues for which the sidechain conformation was analysed, and the total number of residues.

Mol	Chain	Analysed	Rotameric	Outliers	Percentiles	
1	A	416/431 (96%)	378 (91%)	38 (9%)	12	20
1	B	411/431 (95%)	380 (92%)	31 (8%)	17	30
1	C	422/431 (98%)	386 (92%)	36 (8%)	13	23
1	D	419/431 (97%)	380 (91%)	39 (9%)	11	19
All	All	1668/1724 (97%)	1524 (91%)	144 (9%)	13	23

5 of 144 residues with a non-rotameric sidechain are listed below:

Mol	Chain	Res	Type
1	B	437	LYS
1	C	116	SER
1	D	366	LYS
1	B	462	GLN
1	C	47	GLU

Some sidechains can be flipped to improve hydrogen bonding and reduce clashes. All (4) such sidechains are listed below:

Mol	Chain	Res	Type
1	A	12	GLN
1	B	352	GLN
1	C	182	GLN
1	C	369	GLN

5.3.3 RNA ⓘ

There are no RNA molecules in this entry.

5.4 Non-standard residues in protein, DNA, RNA chains ⓘ

There are no non-standard protein/DNA/RNA residues in this entry.

5.5 Carbohydrates ⓘ

There are no carbohydrates in this entry.

5.6 Ligand geometry

Of 17 ligands modelled in this entry, 4 are monoatomic - leaving 13 for Mogul analysis.

In the following table, the Counts columns list the number of bonds (or angles) for which Mogul statistics could be retrieved, the number of bonds (or angles) that are observed in the model and the number of bonds (or angles) that are defined in the chemical component dictionary. The Link column lists molecule types, if any, to which the group is linked. The Z score for a bond length (or angle) is the number of standard deviations the observed value is removed from the expected value. A bond length (or angle) with $|Z| > 2$ is considered an outlier worth inspection. RMSZ is the root-mean-square of all Z scores of the bond lengths (or angles).

Mol	Type	Chain	Res	Link	Bond lengths			Bond angles		
					Counts	RMSZ	$\# Z > 2$	Counts	RMSZ	$\# Z > 2$
3	IMD	A	502	-	3,5,5	0.53	0	4,5,5	0.58	0
4	ACT	A	503	-	1,3,3	0.84	0	0,3,3	0.00	-
3	IMD	B	502	-	3,5,5	0.53	0	4,5,5	0.59	0
4	ACT	B	503	-	1,3,3	1.07	0	0,3,3	0.00	-
4	ACT	B	504	-	1,3,3	1.05	0	0,3,3	0.00	-
4	ACT	B	505	-	1,3,3	1.06	0	0,3,3	0.00	-
4	ACT	B	506	-	1,3,3	0.98	0	0,3,3	0.00	-
3	IMD	C	502	-	3,5,5	0.53	0	4,5,5	0.59	0
4	ACT	C	503	-	1,3,3	0.84	0	0,3,3	0.00	-
4	ACT	C	504	-	1,3,3	1.08	0	0,3,3	0.00	-
3	IMD	D	502	-	3,5,5	0.53	0	4,5,5	0.60	0
4	ACT	D	503	-	1,3,3	0.81	0	0,3,3	0.00	-
4	ACT	D	504	-	1,3,3	1.08	0	0,3,3	0.00	-

In the following table, the Chirals column lists the number of chiral outliers, the number of chiral centers analysed, the number of these observed in the model and the number defined in the chemical component dictionary. Similar counts are reported in the Torsion and Rings columns. '-' means no outliers of that kind were identified.

Mol	Type	Chain	Res	Link	Chirals	Torsions	Rings
3	IMD	A	502	-	-	0/0/0/0	0/1/1/1
4	ACT	A	503	-	-	0/0/0/0	0/0/0/0
3	IMD	B	502	-	-	0/0/0/0	0/1/1/1
4	ACT	B	503	-	-	0/0/0/0	0/0/0/0
4	ACT	B	504	-	-	0/0/0/0	0/0/0/0
4	ACT	B	505	-	-	0/0/0/0	0/0/0/0
4	ACT	B	506	-	-	0/0/0/0	0/0/0/0
3	IMD	C	502	-	-	0/0/0/0	0/1/1/1
4	ACT	C	503	-	-	0/0/0/0	0/0/0/0
4	ACT	C	504	-	-	0/0/0/0	0/0/0/0
3	IMD	D	502	-	-	0/0/0/0	0/1/1/1
4	ACT	D	503	-	-	0/0/0/0	0/0/0/0

Continued on next page...

Continued from previous page...

Mol	Type	Chain	Res	Link	Chirals	Torsions	Rings
4	ACT	D	504	-	-	0/0/0/0	0/0/0/0

There are no bond length outliers.

There are no bond angle outliers.

There are no chirality outliers.

There are no torsion outliers.

There are no ring outliers.

4 monomers are involved in 5 short contacts:

Mol	Chain	Res	Type	Clashes	Symm-Clashes
4	B	503	ACT	2	0
4	B	505	ACT	1	0
3	C	502	IMD	1	0
4	C	503	ACT	1	0

5.7 Other polymers [i](#)

There are no such residues in this entry.

5.8 Polymer linkage issues [i](#)

There are no chain breaks in this entry.

6 Fit of model and data [i](#)

6.1 Protein, DNA and RNA chains [i](#)

In the following table, the column labelled ‘#RSRZ> 2’ contains the number (and percentage) of RSRZ outliers, followed by percent RSRZ outliers for the chain as percentile scores relative to all X-ray entries and entries of similar resolution. The OWAB column contains the minimum, median, 95th percentile and maximum values of the occupancy-weighted average B-factor per residue. The column labelled ‘Q< 0.9’ lists the number of (and percentage) of residues with an average occupancy less than 0.9.

Mol	Chain	Analysed	<RSRZ>	#RSRZ>2	OWAB(Å ²)	Q<0.9
1	A	468/485 (96%)	0.34	43 (9%) 11 12	20, 49, 102, 126	0
1	B	463/485 (95%)	0.27	31 (6%) 21 24	15, 42, 98, 143	0
1	C	475/485 (97%)	0.07	18 (3%) 44 50	16, 36, 93, 137	0
1	D	472/485 (97%)	0.10	23 (4%) 33 39	13, 36, 91, 123	0
All	All	1878/1940 (96%)	0.19	115 (6%) 25 28	13, 40, 97, 143	0

The worst 5 of 115 RSRZ outliers are listed below:

Mol	Chain	Res	Type	RSRZ
1	C	142	LEU	8.9
1	A	387	SER	8.2
1	D	141	THR	8.1
1	A	99	LEU	7.3
1	B	144	ASP	5.6

6.2 Non-standard residues in protein, DNA, RNA chains [i](#)

There are no non-standard protein/DNA/RNA residues in this entry.

6.3 Carbohydrates [i](#)

There are no carbohydrates in this entry.

6.4 Ligands [i](#)

In the following table, the Atoms column lists the number of modelled atoms in the group and the number defined in the chemical component dictionary. LLDF column lists the quality of electron density of the group with respect to its neighbouring residues in protein, DNA or RNA chains. The B-factors column lists the minimum, median, 95th percentile and maximum values of B factors

of atoms in the group. The column labelled 'Q< 0.9' lists the number of atoms with occupancy less than 0.9.

Mol	Type	Chain	Res	Atoms	RSCC	RSR	LLDF	B-factors(\AA^2)	Q<0.9
4	ACT	B	503	4/4	0.91	0.30	4.56	27,29,37,49	0
4	ACT	B	505	4/4	0.85	0.20	2.67	45,57,58,63	0
4	ACT	A	503	4/4	0.91	0.15	1.56	28,29,33,44	0
2	ZN	B	501	1/1	0.87	0.18	1.16	88,88,88,88	0
4	ACT	C	503	4/4	0.93	0.15	0.37	26,38,42,44	0
4	ACT	D	504	4/4	0.53	0.26	0.11	55,62,62,65	0
4	ACT	B	504	4/4	0.88	0.13	0.04	24,42,43,50	0
4	ACT	D	503	4/4	0.95	0.13	-0.04	38,42,43,44	0
3	IMD	A	502	5/5	0.89	0.15	-0.22	41,41,43,43	0
2	ZN	C	501	1/1	0.78	0.14	-0.33	78,78,78,78	0
3	IMD	D	502	5/5	0.98	0.13	-0.49	28,29,37,38	0
2	ZN	D	501	1/1	0.94	0.11	-1.45	81,81,81,81	0
4	ACT	B	506	4/4	0.96	0.14	-	60,61,62,64	0
4	ACT	C	504	4/4	0.88	0.14	-	51,58,58,61	0
2	ZN	A	501	1/1	0.99	0.09	-	63,63,63,63	0
3	IMD	C	502	5/5	0.93	0.13	-	27,31,37,40	0
3	IMD	B	502	5/5	0.96	0.12	-	17,20,22,26	0

6.5 Other polymers [i](#)

There are no such residues in this entry.