



Full wwPDB X-ray Structure Validation Report ⓘ

Jan 31, 2016 – 08:53 PM GMT

PDB ID : 1MH5
Title : The Structure Of The Complex Of The Fab Fragment Of The Esterolytic Antibody MS6-164 and A Transition-State Analog
Authors : Ruzheinikov, S.N.; Muranova, T.A.; Sedelnikova, S.E.; Partridge, L.J.; Blackburn, G.M.; Murray, I.A.; Kakinuma, H.; Takashi, N.; Shimazaki, K.; Sun, J.; Nishi, Y.; Rice, D.W.
Deposited on : 2002-08-19
Resolution : 2.10 Å(reported)

This is a Full wwPDB X-ray Structure Validation Report for a publicly released PDB entry.
We welcome your comments at validation@mail.wwpdb.org
A user guide is available at
<http://wwpdb.org/validation/2016/XrayValidationReportHelp>
with specific help available everywhere you see the ⓘ symbol.

The following versions of software and data (see [references ⓘ](#)) were used in the production of this report:

MolProbity : 4.02b-467
Mogul : 1.7 (RC4), CSD as536be (2015)
Xtriage (Phenix) : 1.9-1692
EDS : rb-20026688
Percentile statistics : 20151230.v01 (using entries in the PDB archive December 30th 2015)
Refmac : 5.8.0135
CCP4 : 6.5.0
Ideal geometry (proteins) : Engh & Huber (2001)
Ideal geometry (DNA, RNA) : Parkinson et al. (1996)
Validation Pipeline (wwPDB-VP) : trunk26865

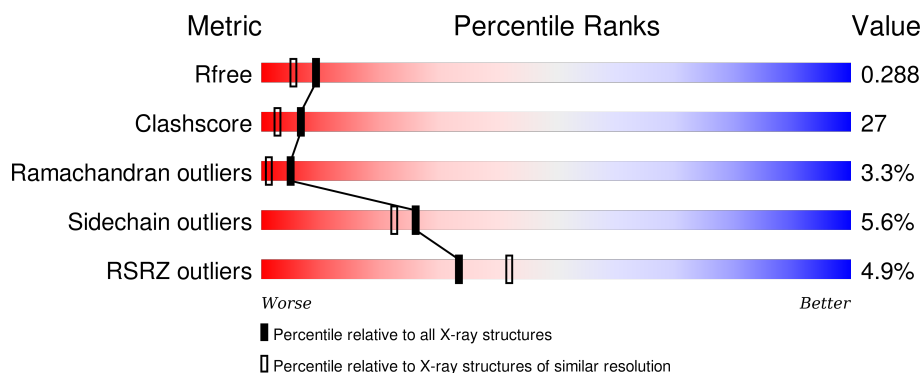
1 Overall quality at a glance

The following experimental techniques were used to determine the structure:

X-RAY DIFFRACTION

The reported resolution of this entry is 2.10 Å.

Percentile scores (ranging between 0-100) for global validation metrics of the entry are shown in the following graphic. The table shows the number of entries on which the scores are based.



Metric	Whole archive (#Entries)	Similar resolution (#Entries, resolution range(Å))
R_{free}	91344	3939 (2.10-2.10)
Clashscore	102246	4460 (2.10-2.10)
Ramachandran outliers	100387	4413 (2.10-2.10)
Sidechain outliers	100360	4414 (2.10-2.10)
RSRZ outliers	91569	3948 (2.10-2.10)

The table below summarises the geometric issues observed across the polymeric chains and their fit to the electron density. The red, orange, yellow and green segments on the lower bar indicate the fraction of residues that contain outliers for ≥ 3 , 2, 1 and 0 types of geometric quality criteria. A grey segment represents the fraction of residues that are not modelled. The numeric value for each fraction is indicated below the corresponding segment, with a dot representing fractions $\leq 5\%$. The upper red bar (where present) indicates the fraction of residues that have poor fit to the electron density. The numeric value is given above the bar.

Mol	Chain	Length	Quality of chain
1	A	219	<div> <div>5%</div> <div>49%</div> <div>37%</div> <div>10%</div> </div>
1	L	219	<div> <div>5%</div> <div>51%</div> <div>42%</div> <div>•</div> </div>
2	B	230	<div> <div>8%</div> <div>45%</div> <div>27%</div> <div>•</div> <div>25%</div> </div>
2	H	230	<div> <div>3%</div> <div>52%</div> <div>26%</div> <div>5%</div> <div>17%</div> </div>

2 Entry composition [i](#)

There are 5 unique types of molecules in this entry. The entry contains 6559 atoms, of which 0 are hydrogens and 0 are deuteriums.

In the tables below, the ZeroOcc column contains the number of atoms modelled with zero occupancy, the AltConf column contains the number of residues with at least one atom in alternate conformation and the Trace column contains the number of residues modelled with at most 2 atoms.

- Molecule 1 is a protein called IMMUNOGLOBULIN MS6-164.

Mol	Chain	Residues	Atoms					ZeroOcc	AltConf	Trace
1	A	197	Total	C	N	O	S	0	0	0
			1528	964	259	298	7			
1	L	212	Total	C	N	O	S	0	0	0
			1644	1030	279	328	7			

- Molecule 2 is a protein called IMMUNOGLOBULIN MS6-164.

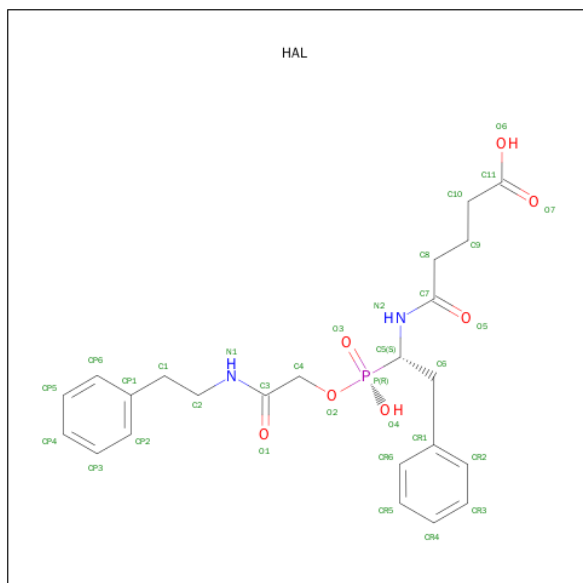
Mol	Chain	Residues	Atoms					ZeroOcc	AltConf	Trace
2	B	172	Total	C	N	O	S	0	0	0
			1339	864	216	255	4			
2	H	190	Total	C	N	O	S	0	0	0
			1455	930	238	282	5			

- Molecule 3 is SULFATE ION (three-letter code: SO4) (formula: O₄S).



Mol	Chain	Residues	Atoms	ZeroOcc	AltConf
3	H	1	Total O S 5 4 1	0	0
3	B	1	Total O S 5 4 1	0	0

- Molecule 4 is N-([2-([1-(4-CARBOXYBUTANOYL)AMINO]-2-PHENYLETHYL)-HYDROXYPHOSPHINYL]OXY]ACETYL)-2-PHENYLETHYLAMINE (three-letter code: HAL) (formula: C₂₃H₂₉N₂O₇P).



Mol	Chain	Residues	Atoms	ZeroOcc	AltConf
4	B	1	Total C N O P 33 23 2 7 1	0	0
4	H	1	Total C N O P 33 23 2 7 1	0	0

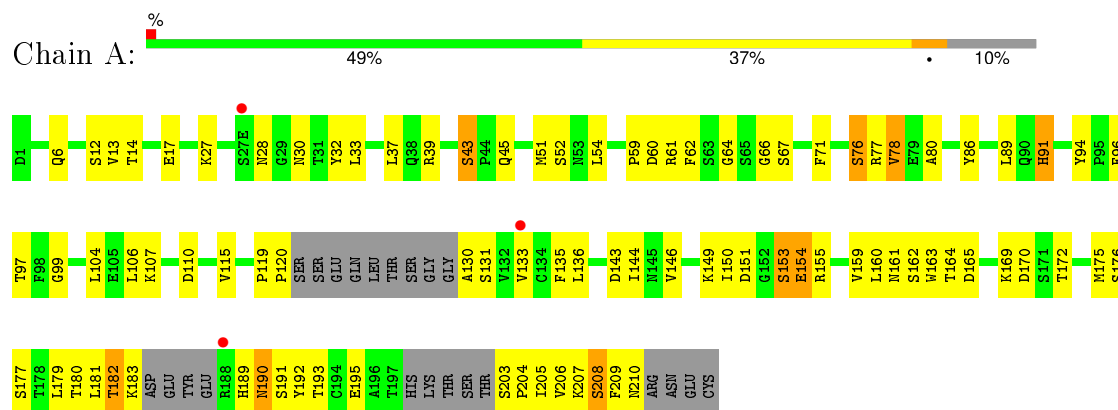
- Molecule 5 is water.

Mol	Chain	Residues	Atoms	ZeroOcc	AltConf
5	A	140	Total O 140 140	0	0
5	B	148	Total O 148 148	0	0
5	H	133	Total O 133 133	0	0
5	L	96	Total O 96 96	0	0

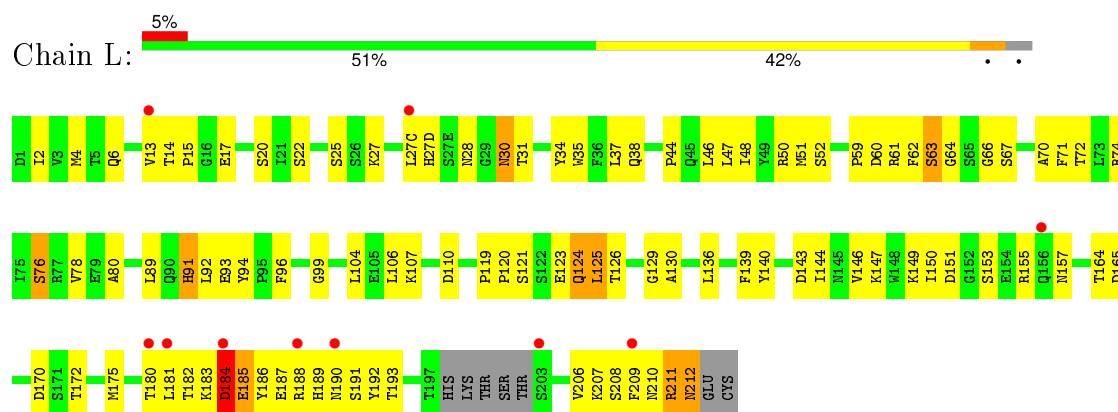
3 Residue-property plots

These plots are drawn for all protein, RNA and DNA chains in the entry. The first graphic for a chain summarises the proportions of errors displayed in the second graphic. The second graphic shows the sequence view annotated by issues in geometry and electron density. Residues are color-coded according to the number of geometric quality criteria for which they contain at least one outlier: green = 0, yellow = 1, orange = 2 and red = 3 or more. A red dot above a residue indicates a poor fit to the electron density ($RSRZ > 2$). Stretches of 2 or more consecutive residues without any outlier are shown as a green connector. Residues present in the sample, but not in the model, are shown in grey.

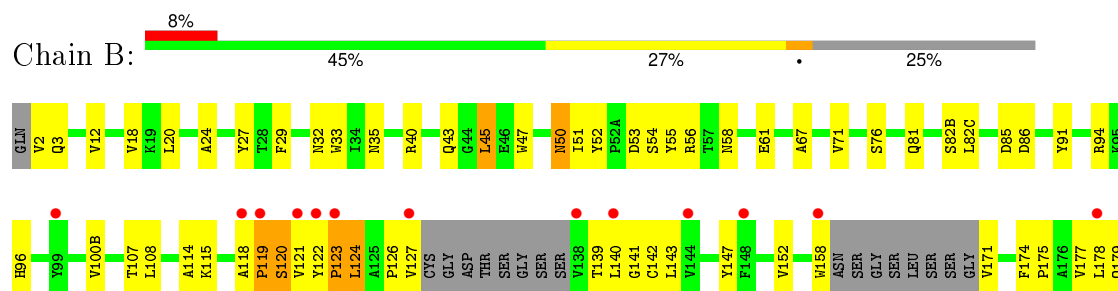
• Molecule 1: IMMUNOGLOBULIN MS6-164

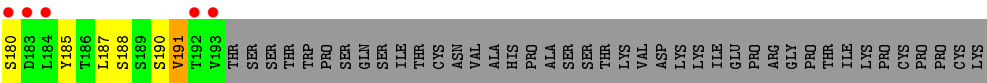


• Molecule 1: IMMUNOGLOBULIN MS6-164

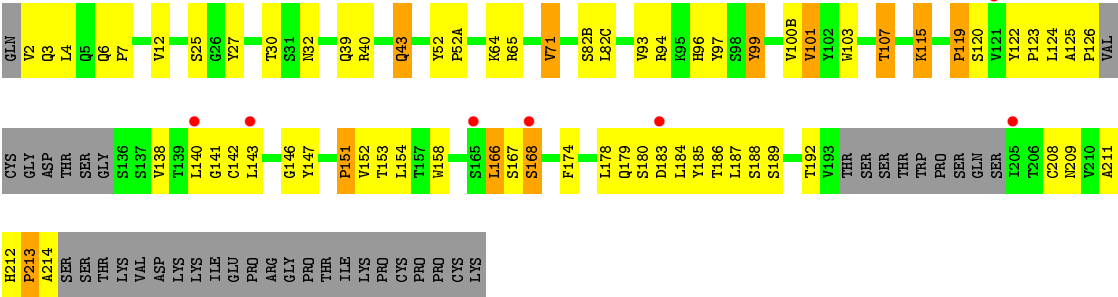


• Molecule 2: IMMUNOGLOBULIN MS6-164





● Molecule 2: IMMUNOGLOBULIN MS6-164



4 Data and refinement statistics

Property	Value	Source
Space group	C 1 2 1	Depositor
Cell constants a, b, c, α , β , γ	76.35Å 117.10Å 114.64Å 90.00° 90.14° 90.00°	Depositor
Resolution (Å)	10.00 – 2.10 14.87 – 2.10	Depositor EDS
% Data completeness (in resolution range)	(Not available) (10.00-2.10) 88.1 (14.87-2.10)	Depositor EDS
R_{merge}	0.05	Depositor
R_{sym}	(Not available)	Depositor
$\langle I/\sigma(I) \rangle$ ¹	2.42 (at 2.10Å)	Xtriage
Refinement program	CNS	Depositor
R, R_{free}	0.218 , 0.288 0.218 , 0.288	Depositor DCC
R_{free} test set	2584 reflections (5.02%)	DCC
Wilson B-factor (Å ²)	40.5	Xtriage
Anisotropy	0.266	Xtriage
Bulk solvent k_{sol} (e/Å ³), B_{sol} (Å ²)	0.34 , 68.3	EDS
Estimated twinning fraction	0.429 for -h,-k,l	Xtriage
L-test for twinning ²	$\langle L \rangle = 0.49$, $\langle L^2 \rangle = 0.32$	Xtriage
Outliers	1 of 51796 reflections (0.002%)	Xtriage
F_o, F_c correlation	0.96	EDS
Total number of atoms	6559	wwPDB-VP
Average B, all atoms (Å ²)	54.0	wwPDB-VP

Xtriage's analysis on translational NCS is as follows: *The largest off-origin peak in the Patterson function is 5.45% of the height of the origin peak. No significant pseudotranslation is detected.*

¹Intensities estimated from amplitudes.

²Theoretical values of $\langle |L| \rangle$, $\langle L^2 \rangle$ for acentric reflections are 0.5, 0.375 respectively for untwinned datasets, and 0.333, 0.2 for perfectly twinned datasets.

5 Model quality [i](#)

5.1 Standard geometry [i](#)

Bond lengths and bond angles in the following residue types are not validated in this section: HAL, SO4

The Z score for a bond length (or angle) is the number of standard deviations the observed value is removed from the expected value. A bond length (or angle) with $|Z| > 5$ is considered an outlier worth inspection. RMSZ is the root-mean-square of all Z scores of the bond lengths (or angles).

Mol	Chain	Bond lengths		Bond angles	
		RMSZ	$\# Z > 5$	RMSZ	$\# Z > 5$
1	A	0.49	0/1562	0.72	0/2119
1	L	0.47	0/1681	0.71	0/2282
2	B	0.53	0/1375	0.75	1/1881 (0.1%)
2	H	0.55	0/1493	0.74	0/2042
All	All	0.51	0/6111	0.73	1/8324 (0.0%)

There are no bond length outliers.

All (1) bond angle outliers are listed below:

Mol	Chain	Res	Type	Atoms	Z	Observed(°)	Ideal(°)
2	B	45	LEU	CA-CB-CG	5.43	127.80	115.30

There are no chirality outliers.

There are no planarity outliers.

5.2 Too-close contacts [i](#)

In the following table, the Non-H and H(model) columns list the number of non-hydrogen atoms and hydrogen atoms in the chain respectively. The H(added) column lists the number of hydrogen atoms added and optimized by MolProbity. The Clashes column lists the number of clashes within the asymmetric unit, whereas Symm-Clashes lists symmetry related clashes.

Mol	Chain	Non-H	H(model)	H(added)	Clashes	Symm-Clashes
1	A	1528	0	1486	81	0
1	L	1644	0	1585	99	0
2	B	1339	0	1317	74	0
2	H	1455	0	1421	76	0
3	B	5	0	0	1	0
3	H	5	0	0	0	0

Continued on next page...

Continued from previous page...

Mol	Chain	Non-H	H(model)	H(added)	Clashes	Symm-Clashes
4	B	33	0	27	2	0
4	H	33	0	27	2	0
5	A	140	0	0	6	0
5	B	148	0	0	1	0
5	H	133	0	0	5	0
5	L	96	0	0	2	0
All	All	6559	0	5863	322	0

The all-atom clashscore is defined as the number of clashes found per 1000 atoms (including hydrogen atoms). The all-atom clashscore for this structure is 27.

All (322) close contacts within the same asymmetric unit are listed below, sorted by their clash magnitude.

Atom-1	Atom-2	Interatomic distance (Å)	Clash overlap (Å)
2:H:40:ARG:HB2	2:H:43:GLN:HG3	1.28	1.10
2:B:12:VAL:HG11	2:B:82(C):LEU:HD12	1.35	1.03
1:A:61:ARG:HG3	1:A:76:SER:HB3	1.43	0.97
2:B:122:TYR:HB3	2:B:123:PRO:HD2	1.43	0.95
1:L:151:ASP:HA	1:L:191:SER:HB3	1.49	0.95
1:L:92:LEU:HD13	1:L:93:GLU:HG3	1.49	0.93
2:B:35:ASN:HD22	2:B:47:TRP:HE1	1.17	0.91
2:H:12:VAL:HG11	2:H:82(C):LEU:HD12	1.53	0.91
1:A:52:SER:HB2	5:A:329:HOH:O	1.72	0.90
1:A:6:GLN:HE21	1:A:99:GLY:HA3	1.40	0.86
2:B:158:TRP:CD1	2:B:171:VAL:HG11	2.11	0.85
1:A:28:ASN:HD21	1:A:30:ASN:HB2	1.43	0.83
1:L:50:ARG:CD	1:L:51:MET:H	1.93	0.82
1:A:28:ASN:ND2	1:A:30:ASN:HB2	1.94	0.82
1:L:52:SER:HB2	5:L:272:HOH:O	1.79	0.82
1:L:80:ALA:HA	1:L:106:LEU:CD1	2.09	0.82
1:L:14:THR:O	1:L:17:GLU:HG2	1.80	0.81
2:B:126:PRO:HD3	2:B:140:LEU:HD23	1.63	0.80
2:H:140:LEU:HD23	2:H:141:GLY:N	1.98	0.79
1:L:50:ARG:CG	1:L:51:MET:H	1.95	0.78
2:H:2:VAL:CG1	2:H:94:ARG:HH11	1.96	0.78
2:H:2:VAL:HG11	2:H:94:ARG:HH11	1.48	0.78
2:H:140:LEU:HD23	2:H:141:GLY:H	1.50	0.75
2:H:64:LYS:HE3	2:H:65:ARG:HG2	1.69	0.75
2:B:61:GLU:HG3	5:B:740:HOH:O	1.87	0.75
2:H:40:ARG:CB	2:H:43:GLN:HG3	2.15	0.74
1:A:203:SER:OG	1:A:204:PRO:HD2	1.87	0.74

Continued on next page...

Continued from previous page...

Atom-1	Atom-2	Interatomic distance (Å)	Clash overlap (Å)
1:L:14:THR:HB	1:L:17:GLU:HG3	1.69	0.74
2:H:151:PRO:HB3	5:H:785:HOH:O	1.87	0.74
2:B:50:ASN:HD21	2:B:58:ASN:HD22	1.35	0.73
5:A:320:HOH:O	2:B:123:PRO:HG3	1.86	0.73
1:L:6:GLN:HE21	1:L:99:GLY:HA3	1.53	0.73
1:L:38:GLN:HE22	2:H:39:GLN:HE22	1.37	0.73
2:B:96:HIS:HB2	2:B:100(B):VAL:HG11	1.71	0.72
1:L:210:ASN:C	1:L:212:ASN:H	1.93	0.72
1:L:50:ARG:HG3	1:L:51:MET:N	2.06	0.71
1:A:155:ARG:HH12	1:A:181:LEU:HD21	1.56	0.71
1:A:155:ARG:HH12	1:A:181:LEU:CD2	2.04	0.71
2:B:187:LEU:HD23	2:B:188:SER:N	2.05	0.71
1:L:184:ASP:HB3	1:L:188:ARG:HH21	1.56	0.70
1:L:50:ARG:CG	1:L:51:MET:N	2.55	0.69
2:B:52:TYR:CE2	2:B:53:ASP:HB3	2.27	0.69
1:A:52:SER:HB3	1:A:64:GLY:O	1.93	0.68
1:L:183:LYS:C	1:L:185:GLU:H	1.97	0.68
1:A:165:ASP:HB3	5:A:245:HOH:O	1.94	0.68
2:B:33:TRP:HH2	2:B:56:ARG:HD2	1.59	0.68
1:A:163:TRP:NE1	1:A:175:MET:HE2	2.09	0.67
1:A:59:PRO:HG2	1:A:62:PHE:CE1	2.30	0.66
2:B:51:ILE:HD13	2:B:71:VAL:HG13	1.76	0.66
1:L:190:ASN:O	1:L:210:ASN:HA	1.96	0.66
1:A:149:LYS:HG2	1:A:154:GLU:HA	1.76	0.65
2:H:64:LYS:HE3	2:H:65:ARG:CD	2.25	0.65
1:L:136:LEU:HD22	1:L:146:VAL:HG22	1.79	0.65
1:A:39:ARG:HH12	1:A:45:GLN:NE2	1.95	0.65
1:L:31:THR:H	1:L:50:ARG:HH11	1.45	0.65
1:L:50:ARG:HG3	1:L:51:MET:H	1.59	0.65
1:L:136:LEU:CD2	1:L:146:VAL:HG22	2.27	0.64
1:L:2:ILE:HG12	1:L:27:LYS:HD2	1.78	0.64
1:L:123:GLU:H	1:L:123:GLU:CD	2.01	0.64
2:H:64:LYS:HE3	2:H:65:ARG:CG	2.27	0.64
1:A:136:LEU:CD2	1:A:146:VAL:HG22	2.28	0.64
1:A:43:SER:HB3	2:B:91:TYR:CE1	2.33	0.64
2:B:122:TYR:HB2	2:B:143:LEU:HB3	1.79	0.63
2:B:2:VAL:HG11	2:B:94:ARG:HH11	1.64	0.63
1:L:210:ASN:O	1:L:212:ASN:N	2.32	0.62
2:B:96:HIS:HB2	2:B:100(B):VAL:CG1	2.29	0.62
1:L:92:LEU:CD1	1:L:93:GLU:HG3	2.26	0.62
2:H:124:LEU:HB2	2:H:141:GLY:O	2.00	0.62

Continued on next page...

Continued from previous page...

Atom-1	Atom-2	Interatomic distance (Å)	Clash overlap (Å)
2:B:40:ARG:HH12	2:B:85:ASP:HA	1.65	0.62
1:L:50:ARG:HD2	1:L:51:MET:H	1.63	0.62
1:A:155:ARG:HG2	1:A:155:ARG:HH11	1.65	0.61
1:L:151:ASP:CA	1:L:191:SER:HB3	2.28	0.61
2:B:50:ASN:C	2:B:50:ASN:HD22	2.03	0.61
1:L:80:ALA:HA	1:L:106:LEU:HD11	1.82	0.61
1:L:14:THR:HB	1:L:17:GLU:CG	2.31	0.60
2:H:154:LEU:HA	2:H:209:ASN:O	2.01	0.60
1:A:205:ILE:N	1:A:205:ILE:HD12	2.15	0.60
1:A:151:ASP:CG	1:A:190:ASN:H	2.04	0.60
2:B:122:TYR:CB	2:B:123:PRO:HD2	2.19	0.60
1:A:150:ILE:HG23	1:A:192:TYR:CE1	2.35	0.60
1:L:150:ILE:HG23	1:L:192:TYR:CE1	2.37	0.60
2:H:213:PRO:O	2:H:214:ALA:CB	2.50	0.60
1:L:121:SER:O	1:L:124:GLN:HB3	2.01	0.60
1:L:125:LEU:HA	1:L:129:GLY:O	2.02	0.59
2:B:40:ARG:HB2	2:B:43:GLN:HG3	1.85	0.59
1:L:17:GLU:O	1:L:78:VAL:HG12	2.02	0.59
2:H:141:GLY:HA2	2:H:158:TRP:CH2	2.38	0.59
2:B:32:ASN:ND2	2:B:96:HIS:HA	2.17	0.59
2:H:213:PRO:O	2:H:214:ALA:HB2	2.01	0.58
1:A:154:GLU:HG3	1:A:154:GLU:O	2.02	0.58
2:H:122:TYR:O	2:H:142:CYS:HB2	2.03	0.58
1:A:193:THR:HG23	1:A:208:SER:OG	2.03	0.58
1:L:27(D):HIS:ND1	1:L:28:ASN:ND2	2.52	0.57
1:L:44:PRO:HG2	2:H:103:TRP:CE3	2.39	0.57
2:B:40:ARG:NH1	2:B:85:ASP:HA	2.19	0.57
2:B:122:TYR:HB3	2:B:123:PRO:CD	2.25	0.57
1:A:80:ALA:HA	1:A:106:LEU:CD1	2.35	0.57
2:H:40:ARG:HB2	2:H:43:GLN:CG	2.20	0.57
1:L:183:LYS:O	1:L:185:GLU:N	2.37	0.57
1:L:27(C):LEU:HD23	1:L:27(D):HIS:N	2.20	0.57
2:B:119:PRO:CA	2:B:147:TYR:HB3	2.35	0.57
1:A:155:ARG:NH1	1:A:181:LEU:HD21	2.18	0.56
1:L:184:ASP:O	1:L:188:ARG:HG3	2.05	0.56
2:H:147:TYR:CE2	2:H:152:VAL:HG13	2.40	0.56
2:H:30:THR:HG23	5:H:811:HOH:O	2.04	0.56
2:H:12:VAL:CG1	2:H:82(C):LEU:HD12	2.32	0.56
2:B:33:TRP:CH2	2:B:56:ARG:HD2	2.41	0.56
2:H:6:GLN:HB3	2:H:107:THR:HG22	1.87	0.56
1:A:61:ARG:HG3	1:A:76:SER:CB	2.28	0.56

Continued on next page...

Continued from previous page...

Atom-1	Atom-2	Interatomic distance (Å)	Clash overlap (Å)
1:A:12:SER:HB3	1:A:107:LYS:HE3	1.88	0.55
2:B:121:VAL:HG12	2:B:122:TYR:N	2.21	0.55
1:L:119:PRO:HB3	1:L:209:PHE:CE2	2.41	0.55
1:L:31:THR:N	1:L:50:ARG:HH11	2.05	0.55
2:B:96:HIS:CB	2:B:100(B):VAL:HG11	2.36	0.55
1:L:44:PRO:HG2	2:H:103:TRP:CD2	2.41	0.55
1:A:39:ARG:HH12	1:A:45:GLN:CD	2.11	0.55
1:A:136:LEU:HD22	1:A:146:VAL:HG22	1.87	0.54
1:L:211:ARG:O	1:L:211:ARG:HG2	2.07	0.54
1:L:182:THR:OG1	1:L:185:GLU:HB2	2.07	0.54
1:L:35:TRP:HB2	1:L:48:ILE:HB	1.88	0.54
2:H:187:LEU:HD23	2:H:188:SER:N	2.22	0.54
2:B:124:LEU:HB2	2:B:141:GLY:C	2.28	0.54
1:A:59:PRO:HG2	1:A:62:PHE:HE1	1.72	0.54
2:B:158:TRP:CZ2	2:B:191:VAL:HG22	2.43	0.54
1:L:149:LYS:HA	1:L:153:SER:O	2.08	0.54
2:B:119:PRO:HA	2:B:147:TYR:HB3	1.90	0.54
2:H:100(B):VAL:O	2:H:100(B):VAL:HG22	2.07	0.54
1:A:91:HIS:HA	1:A:96:PHE:CD1	2.42	0.54
1:L:59:PRO:HG2	1:L:62:PHE:CE1	2.43	0.53
1:L:61:ARG:HB3	1:L:76:SER:HB3	1.91	0.53
1:A:162:SER:OG	2:B:175:PRO:HD2	2.08	0.53
1:A:6:GLN:HE21	1:A:99:GLY:CA	2.18	0.53
1:A:14:THR:HB	1:A:17:GLU:OE1	2.08	0.53
1:L:193:THR:HG23	1:L:208:SER:OG	2.10	0.52
1:L:46:LEU:HD22	2:H:101:VAL:HG13	1.92	0.52
1:A:189:HIS:CE1	5:A:337:HOH:O	2.62	0.52
2:H:183:ASP:O	2:H:184:LEU:HD22	2.09	0.52
1:L:170:ASP:OD1	1:L:172:THR:HG23	2.10	0.52
1:L:120:PRO:HG2	1:L:130:ALA:HB1	1.90	0.52
1:L:94:TYR:CE2	4:H:602:HAL:HC81	2.45	0.52
1:A:130:ALA:CB	1:A:183:LYS:HA	2.40	0.52
1:A:144:ILE:CG2	1:A:175:MET:HE3	2.40	0.52
2:H:99:TYR:HB2	2:H:100(B):VAL:HG11	1.92	0.52
1:A:154:GLU:CG	1:A:154:GLU:O	2.59	0.51
2:B:50:ASN:ND2	2:B:58:ASN:HB2	2.25	0.51
1:A:136:LEU:HD12	1:A:136:LEU:N	2.25	0.51
1:L:28:ASN:OD1	1:L:30:ASN:ND2	2.43	0.51
2:B:32:ASN:HD22	2:B:96:HIS:N	2.09	0.51
2:H:143:LEU:O	2:H:143:LEU:HG	2.10	0.51
2:B:178:LEU:HD13	2:B:185:TYR:CZ	2.44	0.51

Continued on next page...

Continued from previous page...

Atom-1	Atom-2	Interatomic distance (Å)	Clash overlap (Å)
1:A:136:LEU:HD21	1:A:146:VAL:HG22	1.92	0.51
2:H:146:GLY:C	2:H:184:LEU:HD12	2.31	0.51
1:L:210:ASN:C	1:L:212:ASN:N	2.63	0.51
2:H:99:TYR:HB2	2:H:100(B):VAL:CG1	2.41	0.51
1:A:175:MET:HG2	1:A:176:SER:N	2.25	0.50
2:H:96:HIS:HB3	2:H:100(B):VAL:HG11	1.92	0.50
1:L:52:SER:HB3	1:L:64:GLY:O	2.10	0.50
2:H:2:VAL:HG12	2:H:2:VAL:O	2.10	0.50
2:H:96:HIS:CB	2:H:100(B):VAL:HG11	2.42	0.50
1:A:131:SER:OG	1:A:180:THR:HG23	2.12	0.50
1:A:182:THR:O	1:A:183:LYS:C	2.50	0.50
2:H:115:LYS:HD3	2:H:115:LYS:N	2.26	0.50
2:H:119:PRO:CA	2:H:147:TYR:HB3	2.42	0.50
1:A:66:GLY:HA3	1:A:71:PHE:HA	1.94	0.50
1:L:4:MET:SD	1:L:25:SER:HB3	2.52	0.50
2:B:2:VAL:CG1	2:B:94:ARG:HH11	2.25	0.49
2:H:153:THR:HB	2:H:211:ALA:HB3	1.95	0.49
1:L:151:ASP:N	1:L:191:SER:O	2.42	0.49
1:A:149:LYS:HA	1:A:153:SER:O	2.13	0.49
4:B:601:HAL:O5	4:B:601:HAL:H101	2.11	0.49
2:H:99:TYR:CD1	2:H:99:TYR:N	2.77	0.49
1:L:164:THR:HG23	2:H:174:PHE:CD1	2.47	0.49
2:H:40:ARG:O	2:H:43:GLN:HG2	2.12	0.49
1:L:107:LYS:HA	1:L:140:TYR:OH	2.13	0.49
2:H:2:VAL:HG13	2:H:94:ARG:HH11	1.76	0.48
2:H:64:LYS:HE3	2:H:65:ARG:HD3	1.94	0.48
2:H:52:TYR:CZ	2:H:97:TYR:CD2	3.01	0.48
1:A:170:ASP:OD1	1:A:172:THR:HG23	2.12	0.48
2:H:166:LEU:HD23	2:H:168:SER:H	1.77	0.48
1:L:13:VAL:CG1	1:L:104:LEU:HD11	2.43	0.48
2:B:24:ALA:HB1	2:B:27:TYR:CE1	2.48	0.48
2:H:123:PRO:O	2:H:124:LEU:HD23	2.13	0.48
2:B:35:ASN:ND2	2:B:47:TRP:HE1	1.98	0.48
4:H:602:HAL:H101	4:H:602:HAL:O5	2.12	0.48
1:A:120:PRO:HD2	5:A:253:HOH:O	2.14	0.48
1:A:161:ASN:ND2	1:A:177:SER:OG	2.46	0.48
2:H:178:LEU:HD13	2:H:185:TYR:CE2	2.49	0.48
1:A:76:SER:OG	1:A:77:ARG:NH1	2.47	0.48
1:L:185:GLU:O	1:L:189:HIS:HD2	1.97	0.47
2:B:40:ARG:HB2	2:B:43:GLN:CG	2.43	0.47
2:H:7:PRO:O	2:H:107:THR:HB	2.15	0.47

Continued on next page...

Continued from previous page...

Atom-1	Atom-2	Interatomic distance (Å)	Clash overlap (Å)
1:L:206:VAL:HG12	1:L:207:LYS:N	2.29	0.47
2:H:27:TYR:CD2	2:H:32:ASN:ND2	2.83	0.47
2:B:32:ASN:HD22	2:B:96:HIS:CA	2.28	0.47
1:L:183:LYS:C	1:L:185:GLU:N	2.65	0.47
2:H:4:LEU:HD11	2:H:94:ARG:HG2	1.96	0.47
1:A:43:SER:HB3	2:B:91:TYR:HE1	1.78	0.47
1:A:78:VAL:CG1	1:A:106:LEU:HD21	2.45	0.47
2:B:142:CYS:HB2	2:B:158:TRP:HH2	1.80	0.47
1:A:155:ARG:NH1	1:A:155:ARG:HG2	2.29	0.47
1:A:144:ILE:HG23	1:A:175:MET:HE3	1.97	0.47
1:A:151:ASP:OD2	1:A:189:HIS:HA	2.14	0.46
1:L:59:PRO:HG2	1:L:62:PHE:HE1	1.80	0.46
1:L:50:ARG:CZ	1:L:51:MET:HB2	2.46	0.46
1:L:20:SER:OG	1:L:74:ARG:HG2	2.15	0.46
2:B:158:TRP:CE2	2:B:191:VAL:HG22	2.50	0.46
2:B:32:ASN:HD22	2:B:96:HIS:HA	1.80	0.46
1:L:186:TYR:HA	1:L:192:TYR:OH	2.15	0.46
1:A:115:VAL:HA	1:A:135:PHE:O	2.15	0.46
2:B:147:TYR:CE2	2:B:152:VAL:HG13	2.51	0.46
2:H:107:THR:CG2	5:H:711:HOH:O	2.64	0.46
2:B:29:PHE:CD2	2:B:76:SER:HA	2.51	0.46
1:A:59:PRO:HG2	1:A:62:PHE:CD1	2.50	0.46
2:B:139:THR:HA	2:B:191:VAL:O	2.16	0.46
1:L:63:SER:OG	1:L:74:ARG:NH2	2.48	0.46
1:L:91:HIS:HA	1:L:96:PHE:CD1	2.51	0.46
2:B:20:LEU:HD22	2:B:107:THR:HG21	1.98	0.46
2:H:52(A):PRO:HG3	2:H:71:VAL:HG21	1.96	0.46
2:H:141:GLY:HA3	2:H:189:SER:O	2.16	0.46
1:L:181:LEU:HB3	1:L:185:GLU:HB3	1.98	0.46
2:B:119:PRO:O	2:B:120:SER:HB2	2.15	0.45
1:A:89:LEU:HD12	1:A:97:THR:O	2.16	0.45
2:H:94:ARG:O	2:H:101:VAL:HA	2.16	0.45
1:L:121:SER:O	1:L:125:LEU:HD12	2.15	0.45
2:B:121:VAL:CG1	2:B:122:TYR:N	2.80	0.45
1:A:190:ASN:O	1:A:210:ASN:HA	2.16	0.45
1:A:169:LYS:HB3	1:A:169:LYS:NZ	2.31	0.45
1:L:155:ARG:NH1	1:L:157:ASN:HB2	2.30	0.45
1:L:37:LEU:HB2	1:L:47:LEU:HD11	1.99	0.45
2:H:107:THR:HG21	5:H:711:HOH:O	2.16	0.45
2:H:115:LYS:HD3	2:H:115:LYS:H	1.81	0.45
2:H:179:GLN:NE2	2:H:186:THR:OG1	2.48	0.45

Continued on next page...

Continued from previous page...

Atom-1	Atom-2	Interatomic distance (Å)	Clash overlap (Å)
1:L:123:GLU:CD	1:L:123:GLU:N	2.69	0.45
2:B:54:SER:O	2:B:55:TYR:HB2	2.16	0.45
2:H:138:VAL:O	2:H:192:THR:HA	2.17	0.45
2:B:82(C):LEU:HD22	2:B:86:ASP:HB3	1.97	0.45
1:L:211:ARG:O	1:L:212:ASN:O	2.35	0.44
1:A:151:ASP:OD2	1:A:189:HIS:ND1	2.44	0.44
1:A:164:THR:HG23	2:B:174:PHE:CD1	2.53	0.44
1:A:119:PRO:HD3	2:B:127:VAL:HG22	2.00	0.44
2:H:141:GLY:HA2	2:H:158:TRP:HH2	1.80	0.44
1:A:13:VAL:CG1	1:A:104:LEU:HD11	2.47	0.44
2:H:2:VAL:CG1	2:H:94:ARG:HD3	2.48	0.44
2:H:2:VAL:CG1	2:H:94:ARG:NH1	2.74	0.44
1:A:163:TRP:N	1:A:163:TRP:CE3	2.86	0.44
1:A:159:VAL:O	1:A:160:LEU:HD23	2.17	0.44
2:B:3:GLN:O	2:B:24:ALA:HA	2.17	0.44
1:L:15:PRO:HA	1:L:78:VAL:HG13	2.00	0.44
2:B:67:ALA:HA	2:B:81:GLN:O	2.18	0.44
2:B:118:ALA:HB1	2:B:119:PRO:HD2	2.00	0.44
1:A:149:LYS:HG2	1:A:154:GLU:CA	2.47	0.43
1:A:150:ILE:HD11	1:A:179:LEU:HD21	2.00	0.43
2:H:183:ASP:C	2:H:184:LEU:HD22	2.38	0.43
1:L:157:ASN:N	1:L:157:ASN:HD22	2.15	0.43
1:A:37:LEU:HD13	1:A:86:TYR:CZ	2.54	0.43
2:H:125:ALA:HA	2:H:140:LEU:HG	2.00	0.43
1:L:125:LEU:HD12	1:L:125:LEU:H	1.83	0.43
2:H:96:HIS:HB3	2:H:100(B):VAL:CG1	2.49	0.43
2:B:123:PRO:O	2:B:124:LEU:HB2	2.19	0.43
1:A:54:LEU:HD21	1:A:60:ASP:HA	2.00	0.43
1:A:59:PRO:C	1:A:61:ARG:H	2.22	0.43
1:L:50:ARG:HD2	1:L:51:MET:N	2.31	0.43
2:B:178:LEU:HD13	2:B:185:TYR:CE2	2.54	0.43
2:H:115:LYS:CD	2:H:115:LYS:H	2.32	0.43
2:B:171:VAL:HB	2:B:190:SER:O	2.19	0.43
2:H:3:GLN:HB3	2:H:25:SER:OG	2.18	0.43
1:L:66:GLY:HA3	1:L:71:PHE:HA	2.01	0.43
2:H:64:LYS:CE	2:H:65:ARG:HG2	2.44	0.43
2:B:32:ASN:ND2	2:B:96:HIS:CA	2.81	0.43
1:L:146:VAL:HG12	1:L:147:LYS:N	2.34	0.43
2:B:100(B):VAL:O	2:B:100(B):VAL:HG13	2.18	0.42
2:B:122:TYR:CB	2:B:123:PRO:CD	2.91	0.42
1:L:51:MET:CE	1:L:51:MET:HA	2.48	0.42

Continued on next page...

Continued from previous page...

Atom-1	Atom-2	Interatomic distance (Å)	Clash overlap (Å)
1:L:192:TYR:HB2	1:L:209:PHE:CE1	2.54	0.42
1:L:212:ASN:HA	1:L:212:ASN:HD22	1.50	0.42
1:L:136:LEU:HD21	1:L:146:VAL:HG22	2.02	0.42
1:L:13:VAL:HG12	1:L:104:LEU:HD11	2.01	0.42
1:L:136:LEU:O	1:L:139:PHE:HE2	2.03	0.42
1:A:94:TYR:CE2	4:B:601:HAL:HC81	2.55	0.42
2:B:56:ARG:CZ	3:B:704:SO4:O4	2.68	0.42
2:H:212:HIS:O	2:H:214:ALA:N	2.52	0.42
1:A:78:VAL:HG11	1:A:106:LEU:HD21	2.01	0.42
1:A:195:GLU:HB3	1:A:206:VAL:HG13	2.00	0.42
2:H:2:VAL:HG11	2:H:94:ARG:NH1	2.26	0.42
2:H:126:PRO:C	5:H:758:HOH:O	2.58	0.42
2:B:140:LEU:HD23	2:B:140:LEU:HA	1.93	0.42
1:A:39:ARG:NH1	1:A:45:GLN:OE1	2.52	0.42
1:A:32:TYR:HB3	1:A:91:HIS:CD2	2.55	0.42
1:L:188:ARG:O	1:L:189:HIS:CG	2.73	0.42
1:A:150:ILE:O	1:A:151:ASP:C	2.56	0.41
1:L:165:ASP:HB3	5:L:275:HOH:O	2.20	0.41
2:B:50:ASN:C	2:B:50:ASN:ND2	2.72	0.41
1:A:39:ARG:NH1	1:A:45:GLN:CD	2.73	0.41
2:H:178:LEU:HD13	2:H:185:TYR:CZ	2.55	0.41
2:B:179:GLN:HG3	2:B:179:GLN:O	2.20	0.41
2:H:82(C):LEU:HA	2:H:82(C):LEU:HD23	1.86	0.41
1:L:123:GLU:O	1:L:124:GLN:C	2.59	0.41
1:L:123:GLU:O	1:L:126:THR:HB	2.20	0.41
2:H:119:PRO:HA	2:H:147:TYR:HB3	2.03	0.41
2:B:142:CYS:HB2	2:B:158:TRP:CH2	2.54	0.41
1:A:135:PHE:C	1:A:136:LEU:HD12	2.41	0.41
1:L:66:GLY:HA3	1:L:70:ALA:O	2.21	0.41
1:A:206:VAL:HG12	1:A:207:LYS:N	2.35	0.41
1:L:34:TYR:HD2	1:L:89:LEU:HD23	1.85	0.41
2:B:18:VAL:HG12	2:B:82(C):LEU:HD11	2.02	0.41
1:L:121:SER:O	1:L:125:LEU:CD1	2.69	0.41
1:A:151:ASP:N	1:A:191:SER:O	2.53	0.41
2:B:82(C):LEU:HD22	2:B:86:ASP:CB	2.51	0.41
1:L:180:THR:O	1:L:181:LEU:HD23	2.21	0.41
1:A:209:PHE:C	1:A:209:PHE:CD1	2.94	0.41
2:B:123:PRO:O	2:B:141:GLY:O	2.40	0.40
2:H:166:LEU:HD21	2:H:168:SER:OG	2.20	0.40
2:B:35:ASN:ND2	2:B:50:ASN:HB3	2.36	0.40
1:L:186:TYR:O	1:L:211:ARG:HD3	2.21	0.40

Continued on next page...

Continued from previous page...

Atom-1	Atom-2	Interatomic distance (Å)	Clash overlap (Å)
2:H:167:SER:O	2:H:168:SER:O	2.40	0.40
1:L:146:VAL:HG23	1:L:175:MET:HE1	2.03	0.40
1:L:14:THR:O	1:L:15:PRO:C	2.60	0.40
2:B:126:PRO:O	2:B:127:VAL:C	2.59	0.40
1:L:136:LEU:HD22	1:L:146:VAL:CG2	2.49	0.40
1:A:39:ARG:NH2	5:A:273:HOH:O	2.54	0.40
1:L:72:THR:HG22	1:L:74:ARG:HG3	2.03	0.40
2:B:126:PRO:HD3	2:B:140:LEU:CD2	2.40	0.40

There are no symmetry-related clashes.

5.3 Torsion angles [i](#)

5.3.1 Protein backbone [i](#)

In the following table, the Percentiles column shows the percent Ramachandran outliers of the chain as a percentile score with respect to all X-ray entries followed by that with respect to entries of similar resolution.

The Analysed column shows the number of residues for which the backbone conformation was analysed, and the total number of residues.

Mol	Chain	Analysed	Favoured	Allowed	Outliers	Percentiles	
1	A	189/219 (86%)	173 (92%)	11 (6%)	5 (3%)	7	2
1	L	208/219 (95%)	186 (89%)	16 (8%)	6 (3%)	6	2
2	B	166/230 (72%)	147 (89%)	12 (7%)	7 (4%)	3	1
2	H	184/230 (80%)	162 (88%)	15 (8%)	7 (4%)	4	1
All	All	747/898 (83%)	668 (89%)	54 (7%)	25 (3%)	5	1

All (25) Ramachandran outliers are listed below:

Mol	Chain	Res	Type
1	A	67	SER
2	B	119	PRO
2	B	120	SER
2	B	123	PRO
1	L	67	SER
1	L	76	SER
1	L	184	ASP

Continued on next page...

Continued from previous page...

Mol	Chain	Res	Type
2	H	119	PRO
2	H	120	SER
2	H	168	SER
2	B	124	LEU
2	B	180	SER
1	L	124	GLN
1	L	211	ARG
1	A	51	MET
1	A	76	SER
1	A	182	THR
2	H	82(B)	SER
2	H	180	SER
2	B	82(B)	SER
2	B	114	ALA
2	H	213	PRO
1	L	144	ILE
1	A	78	VAL
2	H	151	PRO

5.3.2 Protein sidechains ⓘ

In the following table, the Percentiles column shows the percent sidechain outliers of the chain as a percentile score with respect to all X-ray entries followed by that with respect to entries of similar resolution.

The Analysed column shows the number of residues for which the sidechain conformation was analysed, and the total number of residues.

Mol	Chain	Analysed	Rotameric	Outliers	Percentiles	
1	A	174/194 (90%)	163 (94%)	11 (6%)	22	18
1	L	187/194 (96%)	175 (94%)	12 (6%)	22	18
2	B	150/201 (75%)	144 (96%)	6 (4%)	38	38
2	H	164/201 (82%)	155 (94%)	9 (6%)	27	23
All	All	675/790 (85%)	637 (94%)	38 (6%)	26	22

All (38) residues with a non-rotameric sidechain are listed below:

Mol	Chain	Res	Type
1	A	27	LYS
1	A	33	LEU
1	A	43	SER

Continued on next page...

Continued from previous page...

Mol	Chain	Res	Type
1	A	91	HIS
1	A	110	ASP
1	A	133	VAL
1	A	143	ASP
1	A	153	SER
1	A	154	GLU
1	A	190	ASN
1	A	208	SER
2	B	45	LEU
2	B	50	ASN
2	B	108	LEU
2	B	115	LYS
2	B	177	VAL
2	B	191	VAL
1	L	22	SER
1	L	30	ASN
1	L	60	ASP
1	L	63	SER
1	L	91	HIS
1	L	110	ASP
1	L	125	LEU
1	L	143	ASP
1	L	184	ASP
1	L	185	GLU
1	L	187	GLU
1	L	212	ASN
2	H	43	GLN
2	H	71	VAL
2	H	93	VAL
2	H	99	TYR
2	H	101	VAL
2	H	107	THR
2	H	115	LYS
2	H	166	LEU
2	H	208	CYS

Some sidechains can be flipped to improve hydrogen bonding and reduce clashes. All (18) such sidechains are listed below:

Mol	Chain	Res	Type
1	A	6	GLN
1	A	30	ASN
1	A	161	ASN

Continued on next page...

Continued from previous page...

Mol	Chain	Res	Type
1	A	190	ASN
2	B	32	ASN
2	B	35	ASN
2	B	50	ASN
1	L	6	GLN
1	L	28	ASN
1	L	30	ASN
1	L	53	ASN
1	L	157	ASN
1	L	189	HIS
1	L	212	ASN
2	H	39	GLN
2	H	162	ASN
2	H	179	GLN
2	H	212	HIS

5.3.3 RNA [i](#)

There are no RNA molecules in this entry.

5.4 Non-standard residues in protein, DNA, RNA chains [i](#)

There are no non-standard protein/DNA/RNA residues in this entry.

5.5 Carbohydrates [i](#)

There are no carbohydrates in this entry.

5.6 Ligand geometry [i](#)

4 ligands are modelled in this entry.

In the following table, the Counts columns list the number of bonds (or angles) for which Mogul statistics could be retrieved, the number of bonds (or angles) that are observed in the model and the number of bonds (or angles) that are defined in the chemical component dictionary. The Link column lists molecule types, if any, to which the group is linked. The Z score for a bond length (or angle) is the number of standard deviations the observed value is removed from the expected value. A bond length (or angle) with $|Z| > 2$ is considered an outlier worth inspection. RMSZ is the root-mean-square of all Z scores of the bond lengths (or angles).

Mol	Type	Chain	Res	Link	Bond lengths			Bond angles		
					Counts	RMSZ	# Z > 2	Counts	RMSZ	# Z > 2
4	HAL	B	601	-	30,34,34	7.87	3 (10%)	30,44,44	1.00	2 (6%)
3	SO4	B	704	-	4,4,4	0.25	0	6,6,6	0.36	0
4	HAL	H	602	-	30,34,34	7.69	3 (10%)	30,44,44	1.08	2 (6%)
3	SO4	H	703	-	4,4,4	0.25	0	6,6,6	0.19	0

In the following table, the Chirals column lists the number of chiral outliers, the number of chiral centers analysed, the number of these observed in the model and the number defined in the chemical component dictionary. Similar counts are reported in the Torsion and Rings columns. '-' means no outliers of that kind were identified.

Mol	Type	Chain	Res	Link	Chirals	Torsions	Rings
4	HAL	B	601	-	-	0/30/32/32	0/2/2/2
3	SO4	B	704	-	-	0/0/0/0	0/0/0/0
4	HAL	H	602	-	-	0/30/32/32	0/2/2/2
3	SO4	H	703	-	-	0/0/0/0	0/0/0/0

All (6) bond length outliers are listed below:

Mol	Chain	Res	Type	Atoms	Z	Observed(Å)	Ideal(Å)
4	B	601	HAL	P-C5	-42.84	1.44	1.84
4	H	602	HAL	P-C5	-41.79	1.45	1.84
4	B	601	HAL	P-O4	-3.33	1.48	1.56
4	H	602	HAL	P-O4	-3.20	1.48	1.56
4	B	601	HAL	P-O2	2.06	1.59	1.57
4	H	602	HAL	P-O2	2.25	1.59	1.57

All (4) bond angle outliers are listed below:

Mol	Chain	Res	Type	Atoms	Z	Observed(°)	Ideal(°)
4	H	602	HAL	O3-P-C5	-4.29	106.57	114.29
4	B	601	HAL	O3-P-C5	-4.18	106.77	114.29
4	H	602	HAL	O2-P-O3	-2.63	108.62	115.01
4	B	601	HAL	O2-P-O3	-2.11	109.89	115.01

There are no chirality outliers.

There are no torsion outliers.

There are no ring outliers.

3 monomers are involved in 5 short contacts:

Mol	Chain	Res	Type	Clashes	Symm-Clashes
4	B	601	HAL	2	0
3	B	704	SO4	1	0
4	H	602	HAL	2	0

5.7 Other polymers [i](#)

There are no such residues in this entry.

5.8 Polymer linkage issues [i](#)

There are no chain breaks in this entry.

6 Fit of model and data ⓘ

6.1 Protein, DNA and RNA chains ⓘ

In the following table, the column labelled ‘#RSRZ> 2’ contains the number (and percentage) of RSRZ outliers, followed by percent RSRZ outliers for the chain as percentile scores relative to all X-ray entries and entries of similar resolution. The OWAB column contains the minimum, median, 95th percentile and maximum values of the occupancy-weighted average B-factor per residue. The column labelled ‘Q< 0.9’ lists the number of (and percentage) of residues with an average occupancy less than 0.9.

Mol	Chain	Analysed	<RSRZ>	#RSRZ>2	OWAB(Å ²)	Q<0.9
1	A	197/219 (89%)	0.12	3 (1%) 76 81	29, 51, 88, 99	0
1	L	212/219 (96%)	0.25	10 (4%) 35 44	25, 55, 95, 100	0
2	B	172/230 (74%)	0.27	18 (10%) 8 11	24, 46, 88, 101	0
2	H	190/230 (82%)	0.15	7 (3%) 45 54	24, 48, 85, 99	0
All	All	771/898 (85%)	0.20	38 (4%) 33 42	24, 50, 91, 101	0

All (38) RSRZ outliers are listed below:

Mol	Chain	Res	Type	RSRZ
2	B	158	TRP	4.3
2	B	121	VAL	4.0
1	L	203	SER	3.6
1	A	188	ARG	3.5
2	B	178	LEU	3.5
2	B	138	VAL	3.2
2	H	140	LEU	3.2
2	B	140	LEU	3.0
2	H	205	ILE	3.0
2	B	122	TYR	2.9
2	B	183	ASP	2.9
2	B	123	PRO	2.8
2	B	118	ALA	2.8
1	L	180	THR	2.8
2	B	184	LEU	2.8
2	B	193	VAL	2.7
2	B	119	PRO	2.7
2	B	148	PHE	2.7
1	L	156	GLN	2.6
1	L	184	ASP	2.5
2	H	168	SER	2.5

Continued on next page...

Continued from previous page...

Mol	Chain	Res	Type	RSRZ
2	B	127	VAL	2.5
1	L	27(C)	LEU	2.4
1	L	181	LEU	2.3
1	L	190	ASN	2.3
2	B	180	SER	2.3
2	B	99	TYR	2.2
2	H	121	VAL	2.2
2	H	143	LEU	2.2
1	A	27(E)	SER	2.2
2	B	192	THR	2.1
1	A	133	VAL	2.1
1	L	209	PHE	2.1
1	L	13	VAL	2.1
2	B	144	VAL	2.1
2	H	165	SER	2.0
2	H	183	ASP	2.0
1	L	188	ARG	2.0

6.2 Non-standard residues in protein, DNA, RNA chains [i](#)

There are no non-standard protein/DNA/RNA residues in this entry.

6.3 Carbohydrates [i](#)

There are no carbohydrates in this entry.

6.4 Ligands [i](#)

In the following table, the Atoms column lists the number of modelled atoms in the group and the number defined in the chemical component dictionary. LLDF column lists the quality of electron density of the group with respect to its neighbouring residues in protein, DNA or RNA chains. The B-factors column lists the minimum, median, 95th percentile and maximum values of B factors of atoms in the group. The column labelled 'Q< 0.9' lists the number of atoms with occupancy less than 0.9.

Mol	Type	Chain	Res	Atoms	RSCC	RSR	LLDF	B-factors(Å ²)	Q<0.9
4	HAL	H	602	33/33	0.93	0.13	0.65	20,49,93,99	0
4	HAL	B	601	33/33	0.92	0.13	0.46	28,56,96,100	0
3	SO4	H	703	5/5	0.94	0.14	-0.17	23,31,35,41	5
3	SO4	B	704	5/5	0.86	0.17	-	26,29,38,43	5

6.5 Other polymers [i](#)

There are no such residues in this entry.