



Full wwPDB X-ray Structure Validation Report ⓘ

Feb 1, 2016 – 06:43 PM GMT

PDB ID : 4MIA
Title : Hepatitis C Virus polymerase NS5B genotype 1b (BK) in complex with
RG7109 (N-{4-[6-tert-butyl-5-methoxy-8-(6-methoxy-2-oxo-2,5-dihydro
pyridin-3-yl)quinolin-3-yl]phenyl}methanesulfonamide)
Authors : Harris, S.F.; Villasenor, A.G.
Deposited on : 2013-08-30
Resolution : 2.80 Å(reported)

This is a Full wwPDB X-ray Structure Validation Report for a publicly released PDB entry.
We welcome your comments at validation@mail.wwpdb.org
A user guide is available at
<http://wwpdb.org/validation/2016/XrayValidationReportHelp>
with specific help available everywhere you see the ⓘ symbol.

The following versions of software and data (see [references ⓘ](#)) were used in the production of this report:

MolProbity : 4.02b-467
Mogul : 1.7 (RC4), CSD as536be (2015)
Xtriage (Phenix) : 1.9-1692
EDS : rb-20026688
Percentile statistics : 20151230.v01 (using entries in the PDB archive December 30th 2015)
Refmac : 5.8.0135
CCP4 : 6.5.0
Ideal geometry (proteins) : Engh & Huber (2001)
Ideal geometry (DNA, RNA) : Parkinson et al. (1996)
Validation Pipeline (wwPDB-VP) : trunk26865

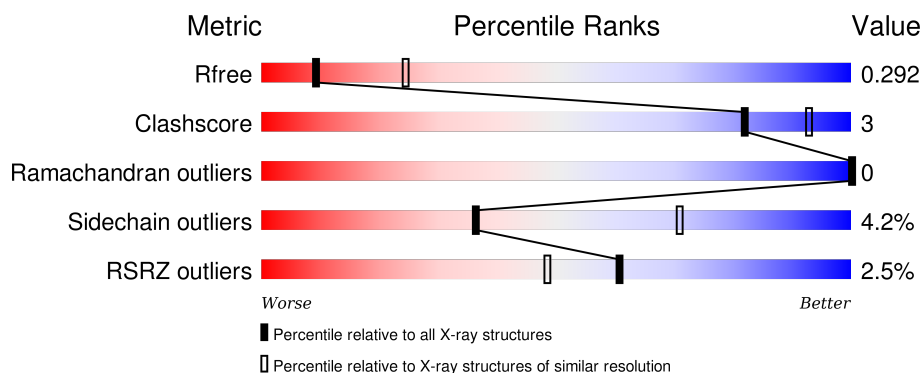
1 Overall quality at a glance

The following experimental techniques were used to determine the structure:

X-RAY DIFFRACTION



The reported resolution of this entry is 2.80 Å.

Percentile scores (ranging between 0-100) for global validation metrics of the entry are shown in the following graphic. The table shows the number of entries on which the scores are based.



Metric	Whole archive (#Entries)	Similar resolution (#Entries, resolution range(Å))
R_{free}	91344	2393 (2.80-2.80)
Clashscore	102246	2827 (2.80-2.80)
Ramachandran outliers	100387	2782 (2.80-2.80)
Sidechain outliers	100360	2784 (2.80-2.80)
RSRZ outliers	91569	2404 (2.80-2.80)

The table below summarises the geometric issues observed across the polymeric chains and their fit to the electron density. The red, orange, yellow and green segments on the lower bar indicate the fraction of residues that contain outliers for ≥ 3 , 2, 1 and 0 types of geometric quality criteria. A grey segment represents the fraction of residues that are not modelled. The numeric value for each fraction is indicated below the corresponding segment, with a dot representing fractions $\leq 5\%$. The upper red bar (where present) indicates the fraction of residues that have poor fit to the electron density. The numeric value is given above the bar.

Mol	Chain	Length	Quality of chain
1	A	570	 3% 86% 10% •
1	B	570	 2% 84% 11% •

2 Entry composition

There are 4 unique types of molecules in this entry. The entry contains 8896 atoms, of which 0 are hydrogens and 0 are deuteriums.

In the tables below, the ZeroOcc column contains the number of atoms modelled with zero occupancy, the AltConf column contains the number of residues with at least one atom in alternate conformation and the Trace column contains the number of residues modelled with at most 2 atoms.

- Molecule 1 is a protein called RNA-directed RNA polymerase.

Mol	Chain	Residues	Atoms					ZeroOcc	AltConf	Trace
1	A	546	Total	C	N	O	S	0	6	0
			4300	2712	759	794	35			
1	B	545	Total	C	N	O	S	0	6	0
			4292	2706	758	793	35			

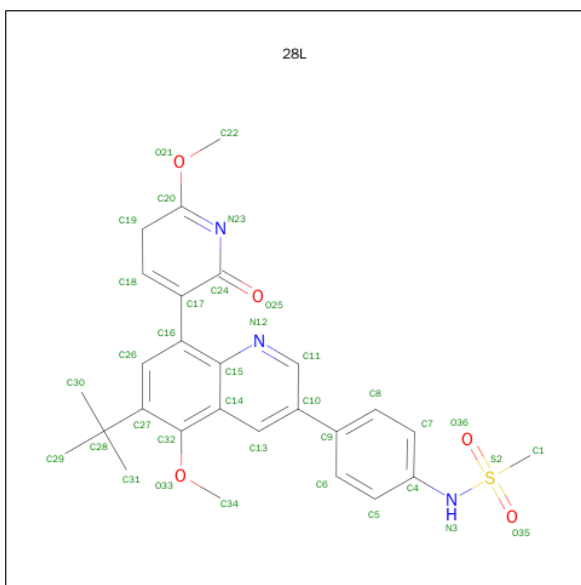
There are 2 discrepancies between the modelled and reference sequences:

Chain	Residue	Modelled	Actual	Comment	Reference
A	1	HIS	-	EXPRESSION TAG	UNP P26663
B	1	HIS	-	EXPRESSION TAG	UNP P26663

- Molecule 2 is ZINC ION (three-letter code: ZN) (formula: Zn).

Mol	Chain	Residues	Atoms		ZeroOcc	AltConf
2	B	1	Total	Zn	0	0
			1	1		
2	A	1	Total	Zn	0	0
			1	1		

- Molecule 3 is N-{4-[6-TERT-BUTYL-5-METHOXY-8-(6-METHOXY-2-OXO-2,5-DIHYDROPYRIDIN-3-YL)QUINOLIN-3-YL]PHENYL}METHANESULFONAMIDE (three-letter code: 28L) (formula: C₂₇H₂₉N₃O₅S).



Mol	Chain	Residues	Atoms					ZeroOcc	AltConf
3	A	1	Total 36	C 27	N 3	O 5	S 1	0	0
3	B	1	Total 36	C 27	N 3	O 5	S 1	0	0

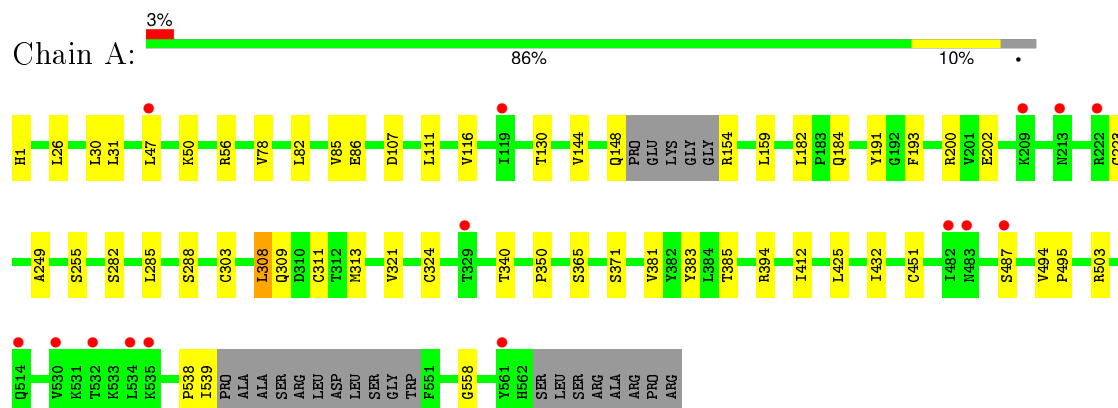
- Molecule 4 is water.

Mol	Chain	Residues	Atoms	ZeroOcc	AltConf
4	A	118	Total O 118 118	0	0
4	B	112	Total O 112 112	0	0

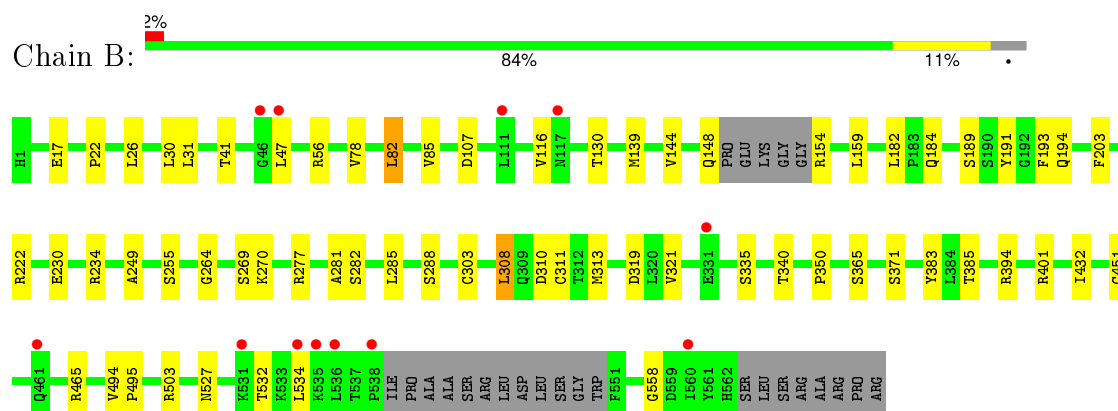
3 Residue-property plots [i](#)

These plots are drawn for all protein, RNA and DNA chains in the entry. The first graphic for a chain summarises the proportions of errors displayed in the second graphic. The second graphic shows the sequence view annotated by issues in geometry and electron density. Residues are color-coded according to the number of geometric quality criteria for which they contain at least one outlier: green = 0, yellow = 1, orange = 2 and red = 3 or more. A red dot above a residue indicates a poor fit to the electron density ($\text{RSRZ} > 2$). Stretches of 2 or more consecutive residues without any outlier are shown as a green connector. Residues present in the sample, but not in the model, are shown in grey.

• Molecule 1: RNA-directed RNA polymerase



• Molecule 1: RNA-directed RNA polymerase



4 Data and refinement statistics

Property	Value	Source
Space group	P 21 21 21	Depositor
Cell constants a, b, c, α , β , γ	84.98Å 104.82Å 125.28Å 90.00° 90.00° 90.00°	Depositor
Resolution (Å)	38.80 – 2.80 38.80 – 2.80	Depositor EDS
% Data completeness (in resolution range)	99.8 (38.80-2.80) 99.8 (38.80-2.80)	Depositor EDS
R_{merge}	0.19	Depositor
R_{sym}	(Not available)	Depositor
$\langle I/\sigma(I) \rangle$ ¹	2.06 (at 2.81Å)	Xtriage
Refinement program	BUSTER 2.11.4	Depositor
R, R_{free}	0.202 , 0.279 0.217 , 0.292	Depositor DCC
R_{free} test set	1432 reflections (5.36%)	DCC
Wilson B-factor (Å ²)	46.2	Xtriage
Anisotropy	0.283	Xtriage
Bulk solvent k_{sol} (e/Å ³), B_{sol} (Å ²)	0.35 , 63.8	EDS
Estimated twinning fraction	No twinning to report.	Xtriage
L-test for twinning ²	$\langle L \rangle = 0.44$, $\langle L^2 \rangle = 0.27$	Xtriage
Outliers	5 of 28155 reflections (0.018%)	Xtriage
F_o, F_c correlation	0.94	EDS
Total number of atoms	8896	wwPDB-VP
Average B, all atoms (Å ²)	48.0	wwPDB-VP

Xtriage's analysis on translational NCS is as follows: *The analyses of the Patterson function reveals a significant off-origin peak that is 45.06 % of the origin peak, indicating pseudo translational symmetry. The chance of finding a peak of this or larger height randomly in a structure without pseudo translational symmetry is equal to 1.3945e-04. The detected translational NCS is most likely also responsible for the elevated intensity ratio.*

¹ Intensities estimated from amplitudes.

² Theoretical values of $\langle |L| \rangle$, $\langle L^2 \rangle$ for acentric reflections are 0.5, 0.375 respectively for untwinned datasets, and 0.333, 0.2 for perfectly twinned datasets.

5 Model quality

5.1 Standard geometry

Bond lengths and bond angles in the following residue types are not validated in this section: ZN, 28L

The Z score for a bond length (or angle) is the number of standard deviations the observed value is removed from the expected value. A bond length (or angle) with $|Z| > 5$ is considered an outlier worth inspection. RMSZ is the root-mean-square of all Z scores of the bond lengths (or angles).

Mol	Chain	Bond lengths		Bond angles	
		RMSZ	$\# Z > 5$	RMSZ	$\# Z > 5$
1	A	0.45	0/4391	0.65	0/5954
1	B	0.45	0/4383	0.65	0/5943
All	All	0.45	0/8774	0.65	0/11897

There are no bond length outliers.

There are no bond angle outliers.

There are no chirality outliers.

There are no planarity outliers.

5.2 Too-close contacts

In the following table, the Non-H and H(model) columns list the number of non-hydrogen atoms and hydrogen atoms in the chain respectively. The H(added) column lists the number of hydrogen atoms added and optimized by MolProbity. The Clashes column lists the number of clashes within the asymmetric unit, whereas Symm-Clashes lists symmetry related clashes.

Mol	Chain	Non-H	H(model)	H(added)	Clashes	Symm-Clashes
1	A	4300	0	4317	24	0
1	B	4292	0	4306	31	0
2	A	1	0	0	0	0
2	B	1	0	0	0	0
3	A	36	0	29	1	0
3	B	36	0	29	1	0
4	A	118	0	0	3	0
4	B	112	0	0	5	0
All	All	8896	0	8681	55	0

The all-atom clashscore is defined as the number of clashes found per 1000 atoms (including hydrogen atoms). The all-atom clashscore for this structure is 3.

All (55) close contacts within the same asymmetric unit are listed below, sorted by their clash magnitude.

Atom-1	Atom-2	Interatomic distance (Å)	Clash overlap (Å)
1:A:425:LEU:HD13	4:A:773:HOH:O	1.82	0.79
1:A:321:VAL:HG21	1:A:365:SER:HB3	1.69	0.74
1:B:527:ASN:HD21	1:B:534:LEU:H	1.35	0.73
1:B:321:VAL:CG2	1:B:365:SER:HB2	2.30	0.62
1:A:412:ILE:HG13	4:A:773:HOH:O	2.00	0.61
1:B:82:LEU:HD12	1:B:249:ALA:HB2	1.84	0.60
1:B:308:LEU:HB3	1:B:311:CYS:SG	2.42	0.59
1:A:200:ARG:HH21	1:A:365:SER:HB2	1.66	0.58
3:B:602:28L:H12	4:B:796:HOH:O	2.03	0.58
1:A:308:LEU:HB3	1:A:311:CYS:SG	2.44	0.57
1:A:184:GLN:HB2	4:A:740:HOH:O	2.03	0.57
1:B:321:VAL:HG23	1:B:365:SER:HB2	1.85	0.57
1:A:144:VAL:HB	1:A:394:ARG:HG2	1.85	0.57
1:B:144:VAL:HB	1:B:394:ARG:HG2	1.86	0.56
1:B:285:LEU:HA	1:B:558:GLY:HA2	1.88	0.54
1:A:191:TYR:CZ	1:A:193:PHE:HB2	2.43	0.54
1:A:285:LEU:HA	1:A:558:GLY:HA2	1.89	0.53
1:A:130:THR:HG22	1:A:255:SER:OG	2.08	0.53
1:B:191:TYR:CZ	1:B:193:PHE:HB2	2.43	0.53
1:B:340:THR:HG23	1:B:350:PRO:HG3	1.90	0.52
1:B:139:MET:HG2	4:B:798:HOH:O	2.10	0.50
1:B:184:GLN:HE21	1:B:194:GLN:HE22	1.59	0.50
1:B:269:SER:HB3	4:B:798:HOH:O	2.12	0.49
1:B:495:PRO:HG2	1:B:503:ARG:HH12	1.78	0.49
1:A:495:PRO:HG2	1:A:503:ARG:HH12	1.78	0.49
1:B:130:THR:HG22	1:B:255:SER:OG	2.13	0.48
1:A:309:GLN:O	1:A:324:CYS:HB2	2.15	0.47
1:B:264:GLY:HA3	4:B:717:HOH:O	2.14	0.46
1:A:340:THR:HG23	1:A:350:PRO:HG3	1.98	0.46
1:A:47:LEU:HA	1:A:50:LYS:HD2	1.98	0.46
1:A:85:VAL:HG11	1:A:116:VAL:HG13	1.99	0.44
1:B:85:VAL:HG11	1:B:116:VAL:HG13	2.00	0.44
1:A:26:LEU:HD13	1:A:432:ILE:HG12	2.00	0.44
1:B:189:SER:HB2	1:B:203:PHE:CE1	2.53	0.43
1:A:538:PRO:HG3	1:B:270:LYS:HB3	2.01	0.43
1:A:538:PRO:CG	1:B:270:LYS:HB3	2.49	0.43
1:A:200:ARG:NH2	1:A:365:SER:HB2	2.31	0.43
1:B:26:LEU:HD13	1:B:432:ILE:HG12	2.01	0.42
1:A:86:GLU:HG3	1:A:111:LEU:HD13	2.00	0.42
1:B:184:GLN:HB2	4:B:745:HOH:O	2.19	0.42

Continued on next page...

Continued from previous page...

Atom-1	Atom-2	Interatomic distance (Å)	Clash overlap (Å)
1:B:308:LEU:HD13	1:B:335:SER:HB3	2.02	0.42
1:B:277:ARG:CZ	1:B:281:ALA:HB2	2.50	0.42
1:B:17:GLU:HB3	1:B:41:THR:HG22	2.02	0.42
1:A:383:TYR:CE2	1:A:385:THR:HB	2.55	0.41
1:B:189:SER:HB2	1:B:203:PHE:HE1	1.85	0.41
1:B:383:TYR:CE2	1:B:385:THR:HB	2.55	0.41
1:B:30:LEU:O	1:B:494:VAL:HA	2.21	0.41
3:A:602:28L:H22	3:A:602:28L:H29	2.03	0.41
1:A:82:LEU:HD13	1:A:249:ALA:HB2	2.01	0.41
1:A:78:VAL:HG21	1:A:182:LEU:HD12	2.03	0.41
1:A:30:LEU:O	1:A:494:VAL:HA	2.21	0.40
1:B:78:VAL:HG21	1:B:182:LEU:HD12	2.03	0.40
1:B:230:GLU:O	1:B:234:ARG:HG3	2.21	0.40
1:B:321:VAL:HG23	1:B:365:SER:CB	2.51	0.40
1:B:22:PRO:HG2	1:B:401:ARG:HG3	2.04	0.40

There are no symmetry-related clashes.

5.3 Torsion angles

5.3.1 Protein backbone

In the following table, the Percentiles column shows the percent Ramachandran outliers of the chain as a percentile score with respect to all X-ray entries followed by that with respect to entries of similar resolution.

The Analysed column shows the number of residues for which the backbone conformation was analysed, and the total number of residues.

Mol	Chain	Analysed	Favoured	Allowed	Outliers	Percentiles	
1	A	546/570 (96%)	526 (96%)	20 (4%)	0	100	100
1	B	545/570 (96%)	529 (97%)	16 (3%)	0	100	100
All	All	1091/1140 (96%)	1055 (97%)	36 (3%)	0	100	100

There are no Ramachandran outliers to report.

5.3.2 Protein sidechains

In the following table, the Percentiles column shows the percent sidechain outliers of the chain as a percentile score with respect to all X-ray entries followed by that with respect to entries of similar

resolution.

The Analysed column shows the number of residues for which the sidechain conformation was analysed, and the total number of residues.

Mol	Chain	Analysed	Rotameric	Outliers	Percentiles	
1	A	473/485 (98%)	452 (96%)	21 (4%)	35	69
1	B	472/485 (97%)	451 (96%)	21 (4%)	35	69
All	All	945/970 (97%)	903 (96%)	42 (4%)	36	69

All (42) residues with a non-rotameric sidechain are listed below:

Mol	Chain	Res	Type
1	A	1	HIS
1	A	31	LEU
1	A	56	ARG
1	A	107	ASP
1	A	148	GLN
1	A	154	ARG
1	A	159	LEU
1	A	202	GLU
1	A	223[A]	CYS
1	A	223[B]	CYS
1	A	282	SER
1	A	288	SER
1	A	303	CYS
1	A	308	LEU
1	A	313	MET
1	A	371	SER
1	A	381	VAL
1	A	451[A]	CYS
1	A	451[B]	CYS
1	A	487	SER
1	A	539	ILE
1	B	31	LEU
1	B	47	LEU
1	B	56	ARG
1	B	82	LEU
1	B	107	ASP
1	B	148	GLN
1	B	154	ARG
1	B	159	LEU
1	B	222	ARG
1	B	282	SER

Continued on next page...

Continued from previous page...

Mol	Chain	Res	Type
1	B	288	SER
1	B	303	CYS
1	B	308	LEU
1	B	310	ASP
1	B	313	MET
1	B	319	ASP
1	B	371	SER
1	B	451[A]	CYS
1	B	451[B]	CYS
1	B	465	ARG
1	B	532	THR

Some sidechains can be flipped to improve hydrogen bonding and reduce clashes. All (7) such sidechains are listed below:

Mol	Chain	Res	Type
1	A	35	ASN
1	A	231	ASN
1	A	562	HIS
1	B	184	GLN
1	B	231	ASN
1	B	527	ASN
1	B	562	HIS

5.3.3 RNA ⓘ

There are no RNA molecules in this entry.

5.4 Non-standard residues in protein, DNA, RNA chains ⓘ

There are no non-standard protein/DNA/RNA residues in this entry.

5.5 Carbohydrates ⓘ

There are no carbohydrates in this entry.

5.6 Ligand geometry ⓘ

Of 4 ligands modelled in this entry, 2 are monoatomic - leaving 2 for Mogul analysis.

In the following table, the Counts columns list the number of bonds (or angles) for which Mogul statistics could be retrieved, the number of bonds (or angles) that are observed in the model and the number of bonds (or angles) that are defined in the chemical component dictionary. The Link column lists molecule types, if any, to which the group is linked. The Z score for a bond length (or angle) is the number of standard deviations the observed value is removed from the expected value. A bond length (or angle) with $|Z| > 2$ is considered an outlier worth inspection. RMSZ is the root-mean-square of all Z scores of the bond lengths (or angles).

Mol	Type	Chain	Res	Link	Bond lengths			Bond angles		
					Counts	RMSZ	# $ Z > 2$	Counts	RMSZ	# $ Z > 2$
3	28L	A	602	-	39,39,39	1.80	6 (15%)	45,59,59	2.09	9 (20%)
3	28L	B	602	-	39,39,39	1.83	7 (17%)	45,59,59	1.82	6 (13%)

In the following table, the Chirals column lists the number of chiral outliers, the number of chiral centers analysed, the number of these observed in the model and the number defined in the chemical component dictionary. Similar counts are reported in the Torsion and Rings columns. '-' means no outliers of that kind were identified.

Mol	Type	Chain	Res	Link	Chirals	Torsions	Rings
3	28L	A	602	-	-	1/23/36/36	0/3/4/4
3	28L	B	602	-	-	0/23/36/36	0/3/4/4

All (13) bond length outliers are listed below:

Mol	Chain	Res	Type	Atoms	Z	Observed(Å)	Ideal(Å)
3	B	602	28L	C19-C20	-6.83	1.38	1.50
3	A	602	28L	C19-C20	-6.11	1.39	1.50
3	A	602	28L	C4-N3	-4.58	1.35	1.43
3	B	602	28L	C19-C18	-3.85	1.42	1.49
3	B	602	28L	C4-N3	-3.09	1.38	1.43
3	A	602	28L	C19-C18	-3.08	1.44	1.49
3	A	602	28L	S2-N3	-2.46	1.59	1.63
3	B	602	28L	S2-N3	-2.16	1.60	1.63
3	B	602	28L	C20-N23	2.25	1.35	1.29
3	A	602	28L	C24-N23	3.17	1.44	1.37
3	B	602	28L	C24-N23	4.29	1.46	1.37
3	B	602	28L	C18-C17	4.70	1.37	1.34
3	A	602	28L	C18-C17	5.61	1.38	1.34

All (15) bond angle outliers are listed below:

Mol	Chain	Res	Type	Atoms	Z	Observed(°)	Ideal(°)
3	A	602	28L	O21-C20-N23	-4.15	113.13	122.30
3	A	602	28L	C5-C4-N3	-3.91	111.65	120.02

Continued on next page...

Continued from previous page...

Mol	Chain	Res	Type	Atoms	Z	Observed(°)	Ideal(°)
3	B	602	28L	C5-C4-N3	-3.30	112.96	120.02
3	A	602	28L	C1-S2-N3	-2.09	104.19	106.83
3	B	602	28L	O35-S2-O36	-2.08	115.74	118.77
3	A	602	28L	O35-S2-O36	-2.07	115.77	118.77
3	A	602	28L	C28-C27-C32	2.51	126.10	121.76
3	B	602	28L	C28-C27-C32	2.69	126.41	121.76
3	A	602	28L	C16-C26-C27	2.79	126.22	119.73
3	B	602	28L	C16-C26-C27	2.92	126.53	119.73
3	A	602	28L	O36-S2-N3	3.41	114.39	107.17
3	B	602	28L	C7-C4-N3	4.92	130.53	120.02
3	A	602	28L	C7-C4-N3	5.43	131.63	120.02
3	B	602	28L	C22-O21-C20	8.07	121.75	115.96
3	A	602	28L	C22-O21-C20	8.92	122.36	115.96

There are no chirality outliers.

All (1) torsion outliers are listed below:

Mol	Chain	Res	Type	Atoms
3	A	602	28L	C22-O21-C20-N23

There are no ring outliers.

2 monomers are involved in 2 short contacts:

Mol	Chain	Res	Type	Clashes	Symm-Clashes
3	A	602	28L	1	0
3	B	602	28L	1	0

5.7 Other polymers [i](#)

There are no such residues in this entry.

5.8 Polymer linkage issues [i](#)

There are no chain breaks in this entry.

6 Fit of model and data ⓘ

6.1 Protein, DNA and RNA chains ⓘ

In the following table, the column labelled ‘#RSRZ> 2’ contains the number (and percentage) of RSRZ outliers, followed by percent RSRZ outliers for the chain as percentile scores relative to all X-ray entries and entries of similar resolution. The OWAB column contains the minimum, median, 95th percentile and maximum values of the occupancy-weighted average B-factor per residue. The column labelled ‘Q< 0.9’ lists the number of (and percentage) of residues with an average occupancy less than 0.9.

Mol	Chain	Analysed	<RSRZ>	#RSRZ>2	OWAB(Å ²)	Q<0.9
1	A	546/570 (95%)	-0.01	15 (2%) 58 45	25, 46, 72, 112	0
1	B	545/570 (95%)	-0.14	12 (2%) 65 54	27, 45, 69, 112	0
All	All	1091/1140 (95%)	-0.08	27 (2%) 61 48	25, 46, 71, 112	0

All (27) RSRZ outliers are listed below:

Mol	Chain	Res	Type	RSRZ
1	A	535	LYS	3.6
1	A	532	THR	3.5
1	B	47	LEU	3.4
1	A	483	ASN	3.3
1	B	534	LEU	3.3
1	A	534	LEU	3.2
1	A	530	VAL	3.2
1	B	538	PRO	2.9
1	B	535	LYS	2.6
1	A	561	TYR	2.6
1	A	487	SER	2.4
1	A	514	GLN	2.4
1	A	213	ASN	2.4
1	B	536	LEU	2.4
1	B	117	ASN	2.3
1	B	531	LYS	2.3
1	B	461	GLN	2.3
1	B	111	LEU	2.3
1	A	482	ILE	2.3
1	A	329	THR	2.3
1	A	47	LEU	2.3
1	B	560	ILE	2.2
1	B	331	GLU	2.2
1	A	222	ARG	2.1

Continued on next page...

Continued from previous page...

Mol	Chain	Res	Type	RSRZ
1	A	119	ILE	2.1
1	B	46	GLY	2.1
1	A	209	LYS	2.1

6.2 Non-standard residues in protein, DNA, RNA chains [i](#)

There are no non-standard protein/DNA/RNA residues in this entry.

6.3 Carbohydrates [i](#)

There are no carbohydrates in this entry.

6.4 Ligands [i](#)

In the following table, the Atoms column lists the number of modelled atoms in the group and the number defined in the chemical component dictionary. LLDF column lists the quality of electron density of the group with respect to its neighbouring residues in protein, DNA or RNA chains. The B-factors column lists the minimum, median, 95th percentile and maximum values of B factors of atoms in the group. The column labelled 'Q< 0.9' lists the number of atoms with occupancy less than 0.9.

Mol	Type	Chain	Res	Atoms	RSCC	RSR	LLDF	B-factors(\AA^2)	Q<0.9
3	28L	B	602	36/36	0.88	0.24	1.91	70,74,77,78	0
3	28L	A	602	36/36	0.91	0.21	0.20	58,65,79,80	0
2	ZN	B	601	1/1	0.97	0.05	-	90,90,90,90	0
2	ZN	A	601	1/1	0.97	0.22	-	93,93,93,93	0

6.5 Other polymers [i](#)

There are no such residues in this entry.