



Full wwPDB X-ray Structure Validation Report ⓘ

Feb 1, 2016 – 06:46 PM GMT

PDB ID : 4MOP
Title : Pyranose 2-oxidase V546C mutant with 3-fluorinated galactose
Authors : Tan, T.C.; Spadiut, O.; Gandini, R.; Haltrich, D.; Divne, C.
Deposited on : 2013-09-12
Resolution : 2.30 Å(reported)

This is a Full wwPDB X-ray Structure Validation Report for a publicly released PDB entry.
We welcome your comments at validation@mail.wwpdb.org
A user guide is available at
<http://wwpdb.org/validation/2016/XrayValidationReportHelp>
with specific help available everywhere you see the ⓘ symbol.

The following versions of software and data (see [references ⓘ](#)) were used in the production of this report:

MolProbity : 4.02b-467
Mogul : 1.7 (RC4), CSD as536be (2015)
Xtriage (Phenix) : 1.9-1692
EDS : rb-20026688
Percentile statistics : 20151230.v01 (using entries in the PDB archive December 30th 2015)
Refmac : 5.8.0135
CCP4 : 6.5.0
Ideal geometry (proteins) : Engh & Huber (2001)
Ideal geometry (DNA, RNA) : Parkinson et al. (1996)
Validation Pipeline (wwPDB-VP) : trunk26865

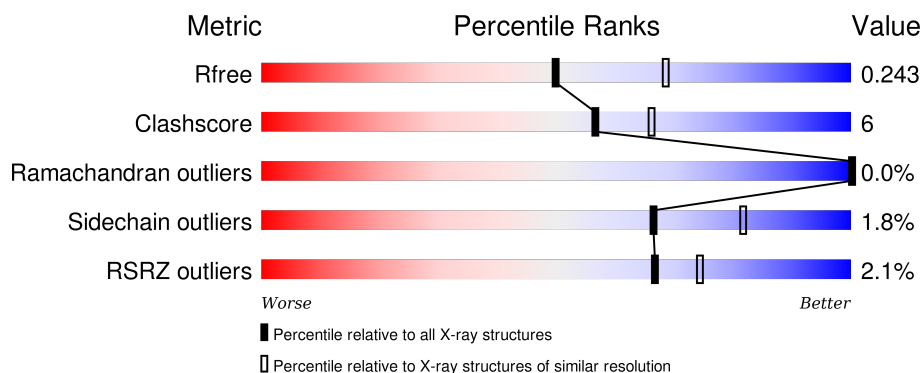
1 Overall quality at a glance

The following experimental techniques were used to determine the structure:

X-RAY DIFFRACTION

The reported resolution of this entry is 2.30 Å.

Percentile scores (ranging between 0-100) for global validation metrics of the entry are shown in the following graphic. The table shows the number of entries on which the scores are based.



Metric	Whole archive (#Entries)	Similar resolution (#Entries, resolution range(Å))
R_{free}	91344	3852 (2.30-2.30)
Clashscore	102246	4452 (2.30-2.30)
Ramachandran outliers	100387	4410 (2.30-2.30)
Sidechain outliers	100360	4409 (2.30-2.30)
RSRZ outliers	91569	3857 (2.30-2.30)

The table below summarises the geometric issues observed across the polymeric chains and their fit to the electron density. The red, orange, yellow and green segments on the lower bar indicate the fraction of residues that contain outliers for ≥ 3 , 2, 1 and 0 types of geometric quality criteria. A grey segment represents the fraction of residues that are not modelled. The numeric value for each fraction is indicated below the corresponding segment, with a dot representing fractions $\leq 5\%$. The upper red bar (where present) indicates the fraction of residues that have poor fit to the electron density. The numeric value is given above the bar.

Mol	Chain	Length	Quality of chain
1	A	633	<div> <div> <div></div> <div>78%</div> <div>13%</div> <div>9%</div> </div> </div>
1	B	633	<div> <div> <div></div> <div>79%</div> <div>11%</div> <div>9%</div> </div> </div>
1	C	633	<div> <div> <div>2%</div> <div>78%</div> <div>12%</div> <div>9%</div> </div> </div>
1	D	633	<div> <div> <div>4%</div> <div>73%</div> <div>17%</div> <div>9%</div> </div> </div>

The following table lists non-polymeric compounds, carbohydrate monomers and non-standard

residues in protein, DNA, RNA chains that are outliers for geometric or electron-density-fit criteria:

Mol	Type	Chain	Res	Chirality	Geometry	Clashes	Electron density
4	12P	A	803	-	-	-	X
4	12P	B	803	-	-	-	X
4	12P	B	804	-	-	-	X
4	12P	D	803	-	-	-	X
5	MES	A	804	-	-	X	X
5	MES	C	701	-	-	-	X

2 Entry composition [i](#)

There are 6 unique types of molecules in this entry. The entry contains 19647 atoms, of which 0 are hydrogens and 0 are deuteriums.

In the tables below, the ZeroOcc column contains the number of atoms modelled with zero occupancy, the AltConf column contains the number of residues with at least one atom in alternate conformation and the Trace column contains the number of residues modelled with at most 2 atoms.

- Molecule 1 is a protein called Pyranose 2-oxidase.

Mol	Chain	Residues	Atoms					ZeroOcc	AltConf	Trace
1	A	576	Total	C	N	O	S	0	0	0
			4541	2866	777	872	26			
1	B	576	Total	C	N	O	S	0	0	0
			4541	2866	777	872	26			
1	C	574	Total	C	N	O	S	0	0	0
			4525	2857	775	868	25			
1	D	574	Total	C	N	O	S	0	0	0
			4525	2857	775	868	25			

There are 52 discrepancies between the modelled and reference sequences:

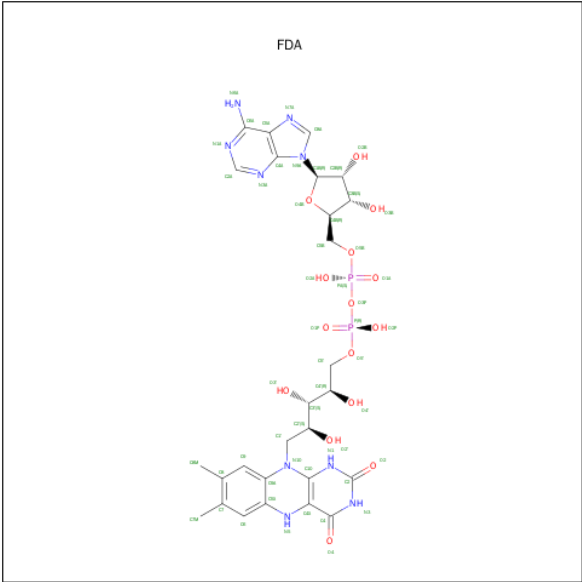
Chain	Residue	Modelled	Actual	Comment	Reference
A	2	ALA	SER	CLONING ARTIFACT	UNP Q7ZA32
A	546	CYS	VAL	ENGINEERED MUTATION	UNP Q7ZA32
A	623	ALA	-	EXPRESSION TAG	UNP Q7ZA32
A	624	ALA	-	EXPRESSION TAG	UNP Q7ZA32
A	625	ALA	-	EXPRESSION TAG	UNP Q7ZA32
A	626	LEU	-	EXPRESSION TAG	UNP Q7ZA32
A	627	GLU	-	EXPRESSION TAG	UNP Q7ZA32
A	628	HIS	-	EXPRESSION TAG	UNP Q7ZA32
A	629	HIS	-	EXPRESSION TAG	UNP Q7ZA32
A	630	HIS	-	EXPRESSION TAG	UNP Q7ZA32
A	631	HIS	-	EXPRESSION TAG	UNP Q7ZA32
A	632	HIS	-	EXPRESSION TAG	UNP Q7ZA32
A	633	HIS	-	EXPRESSION TAG	UNP Q7ZA32
B	2	ALA	SER	CLONING ARTIFACT	UNP Q7ZA32
B	546	CYS	VAL	ENGINEERED MUTATION	UNP Q7ZA32
B	623	ALA	-	EXPRESSION TAG	UNP Q7ZA32
B	624	ALA	-	EXPRESSION TAG	UNP Q7ZA32
B	625	ALA	-	EXPRESSION TAG	UNP Q7ZA32
B	626	LEU	-	EXPRESSION TAG	UNP Q7ZA32
B	627	GLU	-	EXPRESSION TAG	UNP Q7ZA32
B	628	HIS	-	EXPRESSION TAG	UNP Q7ZA32

Continued on next page...

Continued from previous page...

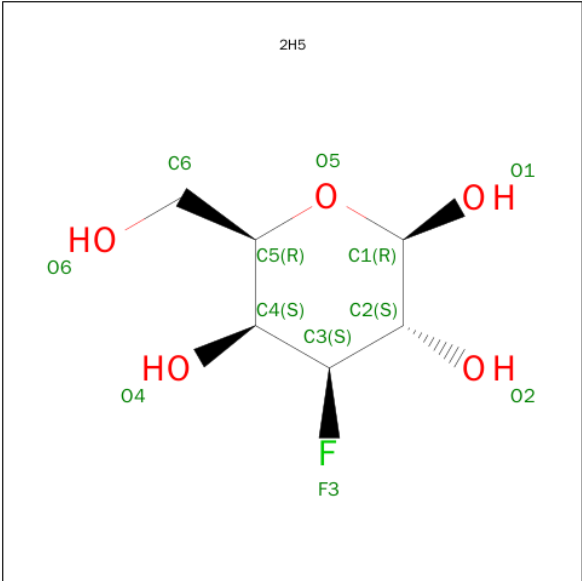
Chain	Residue	Modelled	Actual	Comment	Reference
B	629	HIS	-	EXPRESSION TAG	UNP Q7ZA32
B	630	HIS	-	EXPRESSION TAG	UNP Q7ZA32
B	631	HIS	-	EXPRESSION TAG	UNP Q7ZA32
B	632	HIS	-	EXPRESSION TAG	UNP Q7ZA32
B	633	HIS	-	EXPRESSION TAG	UNP Q7ZA32
C	2	ALA	SER	CLONING ARTIFACT	UNP Q7ZA32
C	546	CYS	VAL	ENGINEERED MUTATION	UNP Q7ZA32
C	623	ALA	-	EXPRESSION TAG	UNP Q7ZA32
C	624	ALA	-	EXPRESSION TAG	UNP Q7ZA32
C	625	ALA	-	EXPRESSION TAG	UNP Q7ZA32
C	626	LEU	-	EXPRESSION TAG	UNP Q7ZA32
C	627	GLU	-	EXPRESSION TAG	UNP Q7ZA32
C	628	HIS	-	EXPRESSION TAG	UNP Q7ZA32
C	629	HIS	-	EXPRESSION TAG	UNP Q7ZA32
C	630	HIS	-	EXPRESSION TAG	UNP Q7ZA32
C	631	HIS	-	EXPRESSION TAG	UNP Q7ZA32
C	632	HIS	-	EXPRESSION TAG	UNP Q7ZA32
C	633	HIS	-	EXPRESSION TAG	UNP Q7ZA32
D	2	ALA	SER	CLONING ARTIFACT	UNP Q7ZA32
D	546	CYS	VAL	ENGINEERED MUTATION	UNP Q7ZA32
D	623	ALA	-	EXPRESSION TAG	UNP Q7ZA32
D	624	ALA	-	EXPRESSION TAG	UNP Q7ZA32
D	625	ALA	-	EXPRESSION TAG	UNP Q7ZA32
D	626	LEU	-	EXPRESSION TAG	UNP Q7ZA32
D	627	GLU	-	EXPRESSION TAG	UNP Q7ZA32
D	628	HIS	-	EXPRESSION TAG	UNP Q7ZA32
D	629	HIS	-	EXPRESSION TAG	UNP Q7ZA32
D	630	HIS	-	EXPRESSION TAG	UNP Q7ZA32
D	631	HIS	-	EXPRESSION TAG	UNP Q7ZA32
D	632	HIS	-	EXPRESSION TAG	UNP Q7ZA32
D	633	HIS	-	EXPRESSION TAG	UNP Q7ZA32

- Molecule 2 is DIHYDROFLAVINE-ADENINE DINUCLEOTIDE (three-letter code: FDA) (formula: $C_{27}H_{35}N_9O_{15}P_2$).



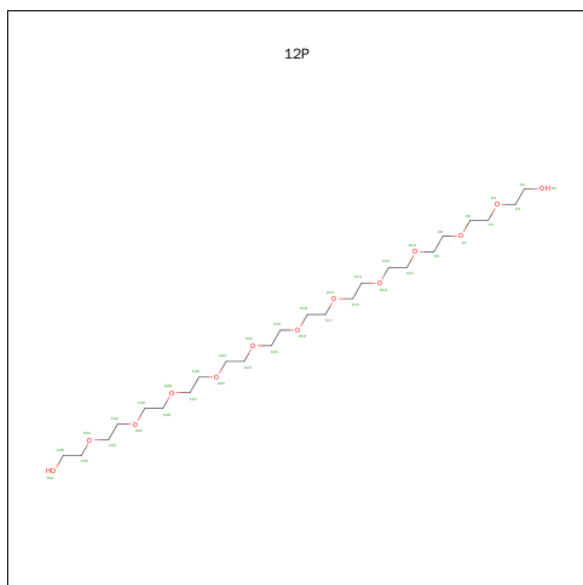
Mol	Chain	Residues	Atoms					ZeroOcc	AltConf
2	A	1	Total	C	N	O	P	0	0
			53	27	9	15	2		
2	B	1	Total	C	N	O	P	0	0
			53	27	9	15	2		
2	C	1	Total	C	N	O	P	0	0
			53	27	9	15	2		
2	D	1	Total	C	N	O	P	0	0
			53	27	9	15	2		

- Molecule 3 is 3-DEOXY-3-FLUORO-BETA-D-GALACTOPYRANOSE (three-letter code: 2H5) (formula: C₆H₁₁FO₅).



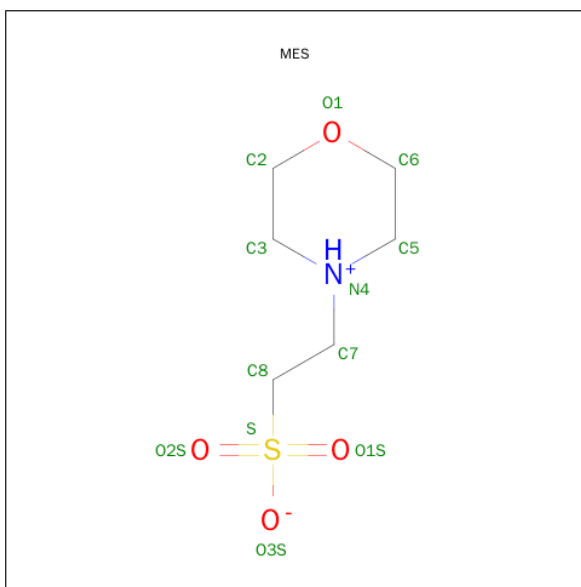
Mol	Chain	Residues	Atoms				ZeroOcc	AltConf
3	A	1	Total	C	F	O	0	0
			12	6	1	5		
3	B	1	Total	C	F	O	0	0
			12	6	1	5		
3	C	1	Total	C	F	O	0	0
			12	6	1	5		
3	D	1	Total	C	F	O	0	0
			12	6	1	5		

- Molecule 4 is DODECAETHYLENE GLYCOL (three-letter code: 12P) (formula: $C_{24}H_{50}O_{13}$).



Mol	Chain	Residues	Atoms			ZeroOcc	AltConf
4	A	1	Total	C	O	0	0
			13	8	5		
4	B	1	Total	C	O	0	0
			16	10	6		
4	B	1	Total	C	O	0	0
			16	10	6		
4	D	1	Total	C	O	0	0
			12	8	4		

- Molecule 5 is 2-(N-MORPHOLINO)-ETHANESULFONIC ACID (three-letter code: MES) (formula: $C_6H_{13}NO_4S$).



Mol	Chain	Residues	Atoms					ZeroOcc	AltConf
5	A	1	Total	C	N	O	S	0	0
			12	6	1	4	1		
5	C	1	Total	C	N	O	S	0	0
			12	6	1	4	1		

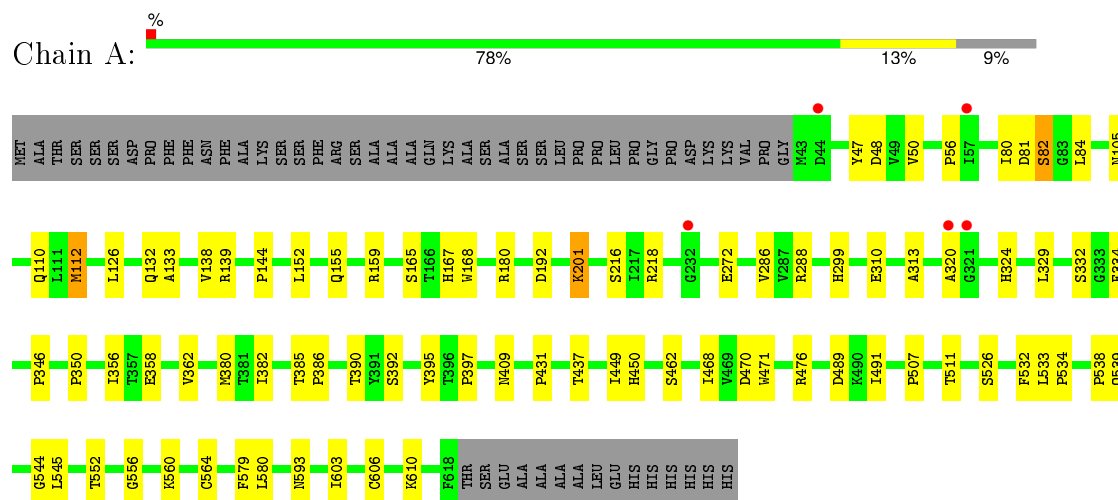
- Molecule 6 is water.

Mol	Chain	Residues	Atoms		ZeroOcc	AltConf
6	A	359	Total	O	0	0
			359	359		
6	B	333	Total	O	0	0
			333	333		
6	C	287	Total	O	0	0
			287	287		
6	D	195	Total	O	0	0
			195	195		

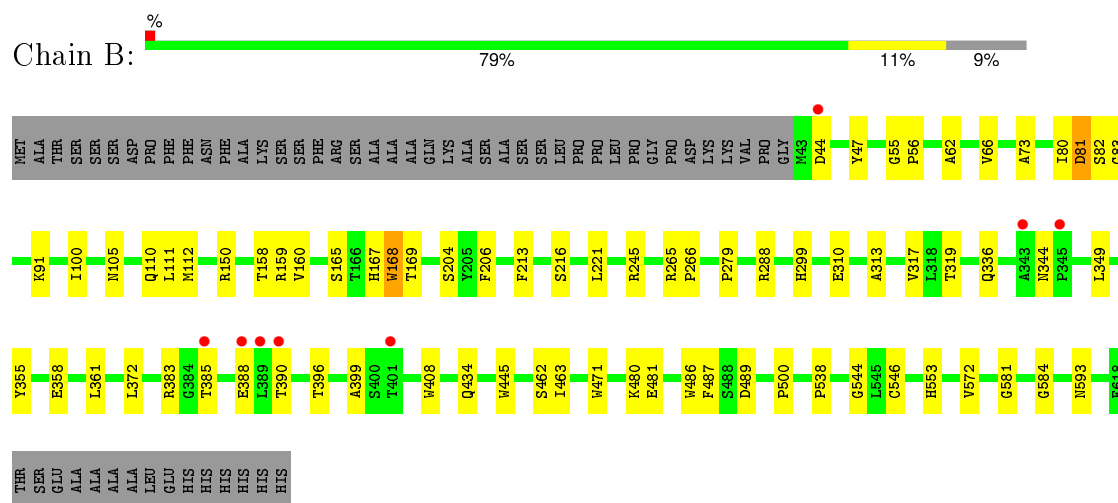
3 Residue-property plots [i](#)

These plots are drawn for all protein, RNA and DNA chains in the entry. The first graphic for a chain summarises the proportions of errors displayed in the second graphic. The second graphic shows the sequence view annotated by issues in geometry and electron density. Residues are color-coded according to the number of geometric quality criteria for which they contain at least one outlier: green = 0, yellow = 1, orange = 2 and red = 3 or more. A red dot above a residue indicates a poor fit to the electron density ($RSRZ > 2$). Stretches of 2 or more consecutive residues without any outlier are shown as a green connector. Residues present in the sample, but not in the model, are shown in grey.

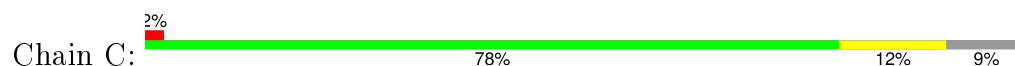
• Molecule 1: Pyranose 2-oxidase

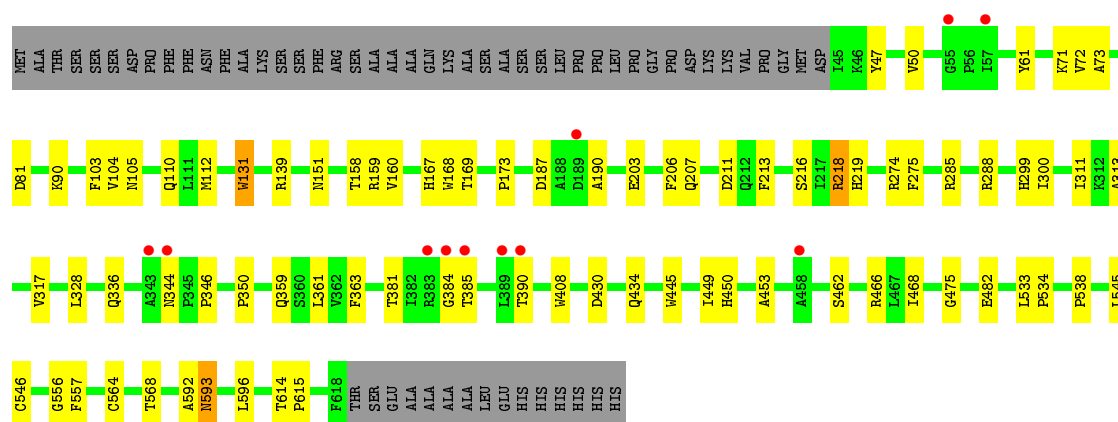


• Molecule 1: Pyranose 2-oxidase

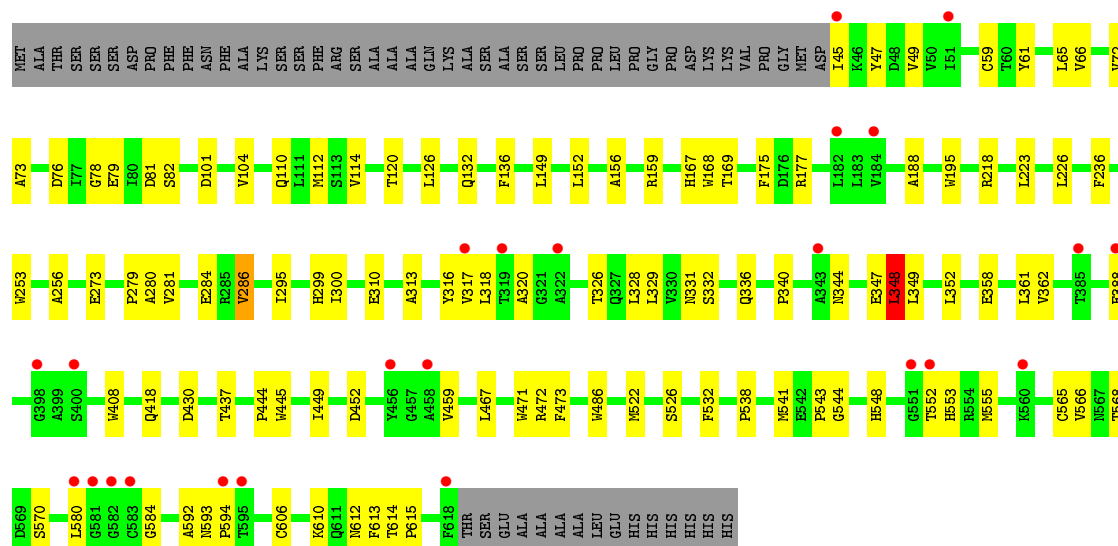
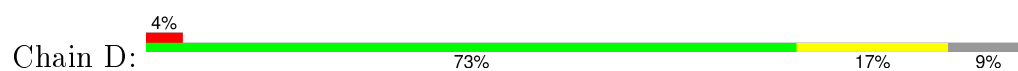


• Molecule 1: Pyranose 2-oxidase





• Molecule 1: Pyranose 2-oxidase



4 Data and refinement statistics

Property	Value	Source
Space group	P 1 21 1	Depositor
Cell constants a, b, c, α , β , γ	99.97Å 102.98Å 137.65Å 90.00° 90.92° 90.00°	Depositor
Resolution (Å)	48.23 – 2.30 29.80 – 2.30	Depositor EDS
% Data completeness (in resolution range)	99.5 (48.23-2.30) 99.5 (29.80-2.30)	Depositor EDS
R_{merge}	(Not available)	Depositor
R_{sym}	(Not available)	Depositor
$\langle I/\sigma(I) \rangle$ ¹	2.01 (at 2.31Å)	Xtriage
Refinement program	REFMAC 5.6.0117	Depositor
R, R_{free}	0.193 , 0.248 0.195 , 0.243	Depositor DCC
R_{free} test set	984 reflections (0.80%)	DCC
Wilson B-factor (Å ²)	33.0	Xtriage
Anisotropy	0.215	Xtriage
Bulk solvent k_{sol} (e/Å ³), B_{sol} (Å ²)	0.30 , 27.7	EDS
Estimated twinning fraction	0.016 for -k,-h,-l 0.012 for k,h,-l 0.022 for h,-k,-l	Xtriage
L-test for twinning ²	$\langle L \rangle = 0.48$, $\langle L^2 \rangle = 0.32$	Xtriage
Outliers	0 of 123357 reflections	Xtriage
F_o, F_c correlation	0.94	EDS
Total number of atoms	19647	wwPDB-VP
Average B, all atoms (Å ²)	39.0	wwPDB-VP

Xtriage's analysis on translational NCS is as follows: *The largest off-origin peak in the Patterson function is 3.11% of the height of the origin peak. No significant pseudotranslation is detected.*

¹Intensities estimated from amplitudes.

²Theoretical values of $\langle |L| \rangle$, $\langle L^2 \rangle$ for acentric reflections are 0.5, 0.375 respectively for untwinned datasets, and 0.333, 0.2 for perfectly twinned datasets.

5 Model quality

5.1 Standard geometry

Bond lengths and bond angles in the following residue types are not validated in this section: FDA, 12P, 2H5, MES

The Z score for a bond length (or angle) is the number of standard deviations the observed value is removed from the expected value. A bond length (or angle) with $|Z| > 5$ is considered an outlier worth inspection. RMSZ is the root-mean-square of all Z scores of the bond lengths (or angles).

Mol	Chain	Bond lengths		Bond angles	
		RMSZ	# $ Z > 5$	RMSZ	# $ Z > 5$
1	A	0.90	1/4657 (0.0%)	0.89	9/6331 (0.1%)
1	B	0.88	3/4657 (0.1%)	0.87	6/6331 (0.1%)
1	C	0.82	2/4641 (0.0%)	0.83	5/6310 (0.1%)
1	D	0.75	3/4641 (0.1%)	0.77	2/6310 (0.0%)
All	All	0.84	9/18596 (0.0%)	0.84	22/25282 (0.1%)

Chiral center outliers are detected by calculating the chiral volume of a chiral center and verifying if the center is modelled as a planar moiety or with the opposite hand. A planarity outlier is detected by checking planarity of atoms in a peptide group, atoms in a mainchain group or atoms of a sidechain that are expected to be planar.

Mol	Chain	#Chirality outliers	#Planarity outliers
1	C	0	2

All (9) bond length outliers are listed below:

Mol	Chain	Res	Type	Atoms	Z	Observed(Å)	Ideal(Å)
1	A	82	SER	C-N	9.95	1.50	1.33
1	B	445	TRP	CD2-CE2	6.89	1.49	1.41
1	B	486	TRP	CD2-CE2	6.62	1.49	1.41
1	B	471	TRP	CD2-CE2	5.95	1.48	1.41
1	C	445	TRP	CD2-CE2	5.76	1.48	1.41
1	C	131	TRP	CD2-CE2	5.50	1.48	1.41
1	D	253	TRP	CD2-CE2	5.39	1.47	1.41
1	D	486	TRP	CD2-CE2	5.29	1.47	1.41
1	D	195	TRP	CD2-CE2	5.01	1.47	1.41

All (22) bond angle outliers are listed below:

Mol	Chain	Res	Type	Atoms	Z	Observed(°)	Ideal(°)
1	A	139	ARG	NE-CZ-NH2	-7.26	116.67	120.30
1	C	218	ARG	NE-CZ-NH2	-7.05	116.77	120.30
1	A	112	MET	CG-SD-CE	6.51	110.62	100.20
1	B	288	ARG	NE-CZ-NH1	6.42	123.51	120.30
1	D	348	LEU	CA-CB-CG	-6.18	101.09	115.30
1	A	476	ARG	NE-CZ-NH2	-6.01	117.29	120.30
1	B	150	ARG	NE-CZ-NH1	5.82	123.21	120.30
1	B	81	ASP	CB-CG-OD1	-5.78	113.10	118.30
1	A	288	ARG	NE-CZ-NH1	5.73	123.17	120.30
1	C	466	ARG	NE-CZ-NH1	5.68	123.14	120.30
1	A	489	ASP	CB-CG-OD1	5.67	123.40	118.30
1	A	218	ARG	NE-CZ-NH2	-5.57	117.52	120.30
1	A	80	ILE	O-C-N	5.55	131.58	122.70
1	C	218	ARG	NE-CZ-NH1	5.36	122.98	120.30
1	D	348	LEU	CB-CG-CD2	-5.30	101.98	111.00
1	B	489	ASP	CB-CG-OD1	5.25	123.03	118.30
1	A	48	ASP	CB-CG-OD1	5.15	122.93	118.30
1	A	470	ASP	CB-CG-OD1	5.11	122.89	118.30
1	C	288	ARG	NE-CZ-NH2	-5.09	117.75	120.30
1	C	139	ARG	NE-CZ-NH2	-5.06	117.77	120.30
1	B	245	ARG	NE-CZ-NH1	5.04	122.82	120.30
1	B	82	SER	CB-CA-C	-5.01	100.58	110.10

There are no chirality outliers.

All (2) planarity outliers are listed below:

Mol	Chain	Res	Type	Group
1	C	151	ASN	Peptide
1	C	449	ILE	Peptide

5.2 Too-close contacts ⓘ

In the following table, the Non-H and H(model) columns list the number of non-hydrogen atoms and hydrogen atoms in the chain respectively. The H(added) column lists the number of hydrogen atoms added and optimized by MolProbity. The Clashes column lists the number of clashes within the asymmetric unit, whereas Symm-Clashes lists symmetry related clashes.

Mol	Chain	Non-H	H(model)	H(added)	Clashes	Symm-Clashes
1	A	4541	0	4384	60	0
1	B	4541	0	4384	41	0
1	C	4525	0	4371	45	0
1	D	4525	0	4371	78	0

Continued on next page...

Continued from previous page...

Mol	Chain	Non-H	H(model)	H(added)	Clashes	Symm-Clashes
2	A	53	0	28	4	0
2	B	53	0	28	4	0
2	C	53	0	30	3	0
2	D	53	0	30	3	0
3	A	12	0	10	2	0
3	B	12	0	11	1	0
3	C	12	0	11	3	0
3	D	12	0	11	0	0
4	A	13	0	16	0	0
4	B	32	0	42	0	0
4	D	12	0	14	0	0
5	A	12	0	13	8	0
5	C	12	0	13	0	0
6	A	359	0	0	3	0
6	B	333	0	0	1	0
6	C	287	0	0	5	0
6	D	195	0	0	3	0
All	All	19647	0	17767	222	0

The all-atom clashscore is defined as the number of clashes found per 1000 atoms (including hydrogen atoms). The all-atom clashscore for this structure is 6.

All (222) close contacts within the same asymmetric unit are listed below, sorted by their clash magnitude.

Atom-1	Atom-2	Interatomic distance (Å)	Clash overlap (Å)
1:D:347:GLU:C	1:D:348:LEU:HD23	1.46	1.35
1:D:347:GLU:O	1:D:348:LEU:HD23	1.49	1.09
1:A:133:ALA:HB3	5:A:804:MES:H71	1.39	1.04
1:D:348:LEU:N	1:D:348:LEU:HD23	1.60	0.99
1:D:347:GLU:C	1:D:348:LEU:CD2	2.33	0.96
1:A:133:ALA:CB	5:A:804:MES:H71	1.95	0.94
2:A:801:FDA:N5	3:A:802:2H5:H1	1.84	0.93
1:B:110:GLN:HE21	1:B:167:HIS:HD1	1.15	0.90
1:C:110:GLN:HE21	1:C:167:HIS:HD1	1.21	0.88
1:A:110:GLN:HE21	1:A:167:HIS:HD1	1.25	0.83
1:A:468:ILE:HD12	1:A:533:LEU:HD22	1.61	0.83
2:A:801:FDA:HN5	3:A:802:2H5:H1	1.43	0.82
1:D:110:GLN:HE21	1:D:167:HIS:HD1	1.28	0.81
1:D:347:GLU:HG2	1:D:348:LEU:HD21	1.64	0.79
1:C:468:ILE:HD12	1:C:533:LEU:HD22	1.65	0.78
5:A:804:MES:O1S	1:B:463:ILE:HD13	1.84	0.77

Continued on next page...

Continued from previous page...

Atom-1	Atom-2	Interatomic distance (Å)	Clash overlap (Å)
2:C:702:FDA:N5	3:C:703:2H5:H1	1.99	0.77
1:B:91:LYS:HD2	1:B:100:ILE:HD11	1.64	0.77
1:A:133:ALA:HB2	5:A:804:MES:O3S	1.86	0.75
1:D:347:GLU:O	1:D:348:LEU:CD2	2.32	0.71
1:A:356:ILE:CG2	1:A:552:THR:HG22	2.24	0.67
1:D:348:LEU:CD2	1:D:348:LEU:N	2.30	0.66
1:D:126:LEU:HD12	1:D:132:GLN:HG3	1.76	0.66
1:A:299:HIS:CD2	1:A:310:GLU:HG3	2.31	0.66
1:C:593:ASN:ND2	3:C:703:2H5:O2	2.28	0.64
1:D:47:TYR:CE2	1:D:73:ALA:HB2	2.34	0.63
1:A:533:LEU:HD12	1:A:534:PRO:HD2	1.82	0.62
1:A:81:ASP:N	1:A:81:ASP:OD1	2.30	0.61
1:A:356:ILE:HG22	1:A:552:THR:HG22	1.81	0.61
2:C:702:FDA:HN5	3:C:703:2H5:H1	1.64	0.61
1:B:396:THR:HG22	1:B:399:ALA:HB2	1.82	0.61
1:D:79:GLU:HG2	1:D:280:ALA:HB2	1.83	0.60
1:D:47:TYR:CD2	1:D:73:ALA:HB2	2.36	0.60
1:B:221:LEU:HD21	1:B:372:LEU:HB3	1.84	0.60
1:D:286:VAL:HB	1:D:295:ILE:HD12	1.83	0.60
1:A:133:ALA:CB	5:A:804:MES:C7	2.78	0.59
1:D:566:VAL:CG1	1:D:580:LEU:HD12	2.31	0.59
1:C:173:PRO:HG2	1:C:592:ALA:HB1	1.84	0.59
1:C:159:ARG:HA	2:C:702:FDA:O2B	2.03	0.58
1:D:349:LEU:HD13	1:D:565:CYS:HB3	1.85	0.57
1:C:110:GLN:NE2	1:C:167:HIS:HD1	1.99	0.57
1:A:133:ALA:HB3	5:A:804:MES:C7	2.23	0.57
1:C:169:THR:O	1:C:169:THR:HG22	2.04	0.57
1:B:47:TYR:CD2	1:B:73:ALA:HB2	2.40	0.56
1:C:482:GLU:HG3	6:C:1082:HOH:O	2.04	0.56
1:A:144:PRO:HD2	1:A:491:ILE:HG13	1.86	0.56
1:B:383:ARG:O	1:B:390:THR:HG22	2.06	0.56
1:D:449:ILE:HG12	1:D:471:TRP:CE3	2.42	0.55
1:D:218:ARG:HG3	1:D:430:ASP:OD2	2.06	0.55
1:B:299:HIS:CD2	1:B:310:GLU:HG3	2.43	0.54
1:A:50:VAL:HG13	1:A:313:ALA:HB2	1.89	0.54
1:D:352:LEU:HD12	1:D:552:THR:O	2.07	0.54
1:D:566:VAL:HG13	1:D:580:LEU:HD12	1.89	0.54
2:B:801:FDA:N5	3:B:802:2H5:H1	2.23	0.54
1:D:388:GLU:HG3	6:D:1058:HOH:O	2.07	0.54
1:D:49:VAL:HG21	1:D:65:LEU:HD13	1.90	0.53
1:B:158:THR:HG22	1:B:160:VAL:HG22	1.91	0.53

Continued on next page...

Continued from previous page...

Atom-1	Atom-2	Interatomic distance (Å)	Clash overlap (Å)
1:D:614:THR:HG22	1:D:615:PRO:O	2.07	0.53
1:A:382:ILE:HD13	6:A:1179:HOH:O	2.08	0.53
1:A:84:LEU:HD11	1:B:80:ILE:HD12	1.89	0.53
1:A:356:ILE:HG21	1:A:552:THR:HG22	1.90	0.53
1:B:44:ASP:HB2	1:B:47:TYR:CZ	2.44	0.53
1:D:281:VAL:HG11	1:D:300:ILE:HD12	1.89	0.52
1:B:396:THR:CG2	1:B:399:ALA:HB2	2.39	0.52
1:C:50:VAL:HG13	1:C:313:ALA:HB2	1.90	0.52
1:D:570:SER:HB3	1:D:580:LEU:O	2.09	0.52
1:C:361:LEU:HD22	1:C:546:CYS:HB3	1.92	0.52
1:D:459:VAL:HA	6:D:1020:HOH:O	2.10	0.52
1:D:320:ALA:HB1	2:D:801:FDA:C8A	2.39	0.52
1:D:81:ASP:N	1:D:81:ASP:OD1	2.41	0.51
1:C:216:SER:HB3	1:C:219:HIS:HB3	1.93	0.51
1:D:177:ARG:NH2	1:D:188:ALA:HB1	2.26	0.51
1:D:159:ARG:HA	2:D:801:FDA:O2B	2.11	0.50
1:A:346:PRO:HG2	1:A:350:PRO:HA	1.94	0.50
1:C:453:ALA:HB3	6:C:859:HOH:O	2.11	0.49
1:A:138:VAL:HG21	1:A:144:PRO:HG3	1.95	0.49
1:C:104:VAL:HG13	1:C:105:ASN:N	2.27	0.49
1:A:286:VAL:O	1:A:332:SER:HB3	2.11	0.49
1:D:76:ASP:OD1	1:D:78:GLY:N	2.43	0.49
1:B:361:LEU:HD22	1:B:546:CYS:HB3	1.94	0.49
1:B:165:SER:HA	1:B:168:TRP:CD1	2.47	0.49
1:C:545:LEU:HD12	6:C:875:HOH:O	2.13	0.49
1:D:114:VAL:HG23	1:D:156:ALA:HA	1.94	0.49
1:C:158:THR:HG22	1:C:160:VAL:HG22	1.94	0.49
1:B:538:PRO:HG2	1:D:538:PRO:HG2	1.93	0.49
1:C:81:ASP:OD2	1:C:90:LYS:NZ	2.42	0.49
1:A:380:MET:HE1	1:A:409:ASN:HB3	1.94	0.48
1:B:47:TYR:CE2	1:B:73:ALA:HB2	2.48	0.48
1:C:47:TYR:CE2	1:C:73:ALA:HB2	2.48	0.48
1:D:452:ASP:HB2	1:D:472:ARG:NH1	2.28	0.48
1:A:471:TRP:CZ2	1:A:526:SER:HA	2.48	0.48
1:D:120:THR:HA	1:D:136:PHE:CD1	2.48	0.48
1:D:226:LEU:CD1	1:D:449:ILE:HD13	2.44	0.48
1:A:471:TRP:CH2	1:A:526:SER:HA	2.49	0.48
1:D:444:PRO:HD2	1:D:445:TRP:CZ3	2.49	0.47
1:C:285:ARG:HB2	1:C:299:HIS:HB2	1.96	0.47
1:D:313:ALA:HB3	1:D:316:TYR:CE2	2.48	0.47
1:D:566:VAL:HG11	1:D:580:LEU:HB2	1.96	0.47

Continued on next page...

Continued from previous page...

Atom-1	Atom-2	Interatomic distance (Å)	Clash overlap (Å)
1:A:437:THR:HG23	1:A:437:THR:O	2.13	0.47
1:B:44:ASP:HB2	1:B:47:TYR:OH	2.14	0.47
1:D:548:HIS:CD2	1:D:594:PRO:HD2	2.49	0.47
1:A:545:LEU:HD12	6:A:1181:HOH:O	2.14	0.47
1:B:111:LEU:HD21	2:B:801:FDA:HM83	1.97	0.47
1:C:218:ARG:HG3	1:C:430:ASP:OD2	2.15	0.47
1:A:449:ILE:HG12	1:A:471:TRP:CE3	2.50	0.47
1:B:553:HIS:CE1	1:B:584:GLY:HA3	2.50	0.47
1:A:507:PRO:HD2	1:A:511:THR:HG21	1.96	0.47
1:B:169:THR:H	2:B:801:FDA:HN5	1.63	0.47
1:C:203:GLU:HG3	1:C:596:LEU:HD11	1.97	0.47
1:B:336:GLN:NE2	1:B:344:ASN:O	2.47	0.46
1:D:299:HIS:NE2	1:D:310:GLU:HG3	2.30	0.46
1:B:265:ARG:HA	1:B:266:PRO:C	2.34	0.46
1:A:538:PRO:HG2	1:C:538:PRO:HG2	1.96	0.46
1:B:47:TYR:O	1:B:313:ALA:HA	2.16	0.46
1:D:336:GLN:OE1	1:D:340:PRO:HA	2.16	0.46
1:A:105:ASN:O	1:B:105:ASN:HB3	2.16	0.46
1:B:319:THR:HG22	1:B:581:GLY:HA3	1.97	0.46
1:D:553:HIS:CE1	1:D:584:GLY:HA3	2.51	0.46
1:D:61:TYR:HA	1:D:606:CYS:SG	2.56	0.46
1:A:84:LEU:HD11	1:B:80:ILE:CD1	2.47	0.45
1:A:556:GLY:HA3	1:A:564:CYS:SG	2.56	0.45
1:A:56:PRO:HG3	1:A:165:SER:HB3	1.98	0.45
1:B:385:THR:O	1:B:388:GLU:HB2	2.16	0.45
1:D:299:HIS:CD2	1:D:310:GLU:HG3	2.51	0.45
1:A:560:LYS:HD2	6:A:1082:HOH:O	2.17	0.45
1:D:59:CYS:SG	1:D:256:ALA:HB1	2.56	0.45
1:D:318:LEU:HD13	1:D:328:LEU:HD23	1.99	0.45
1:A:299:HIS:NE2	1:A:310:GLU:HG3	2.31	0.45
1:C:47:TYR:O	1:C:313:ALA:HA	2.16	0.45
1:C:103:PHE:O	1:C:104:VAL:C	2.54	0.45
1:D:169:THR:H	2:D:801:FDA:HN5	1.63	0.45
1:C:328:LEU:O	1:C:328:LEU:HD23	2.17	0.45
1:A:380:MET:HE1	1:A:409:ASN:CB	2.46	0.44
1:A:356:ILE:HG22	1:A:552:THR:CG2	2.47	0.44
1:A:126:LEU:HD12	1:A:132:GLN:HG3	2.00	0.44
1:C:47:TYR:CD2	1:C:73:ALA:HB2	2.52	0.44
1:B:317:VAL:HG12	1:B:319:THR:HG23	2.00	0.44
1:A:180:ARG:NH2	1:A:192:ASP:OD1	2.48	0.44
1:B:167:HIS:CD2	1:B:167:HIS:C	2.92	0.43

Continued on next page...

Continued from previous page...

Atom-1	Atom-2	Interatomic distance (Å)	Clash overlap (Å)
1:D:279:PRO:O	1:D:281:VAL:HG23	2.18	0.43
1:C:545:LEU:HD12	1:C:545:LEU:HA	1.88	0.43
1:D:45:ILE:O	1:D:45:ILE:HG22	2.18	0.43
1:D:101:ASP:O	1:D:104:VAL:HG12	2.17	0.43
1:D:437:THR:HG23	1:D:437:THR:O	2.18	0.43
1:C:556:GLY:HA3	1:C:564:CYS:SG	2.58	0.43
1:C:384:GLY:HA3	1:C:390:THR:O	2.18	0.43
1:D:358:GLU:HG2	1:D:544:GLY:HA2	2.00	0.43
1:D:284:GLU:O	1:D:331:ASN:ND2	2.42	0.43
1:C:71:LYS:HB2	1:C:274:ARG:CZ	2.47	0.43
1:A:358:GLU:HG2	1:A:544:GLY:HA2	2.00	0.43
1:D:471:TRP:CH2	1:D:526:SER:HA	2.54	0.43
1:D:223:LEU:HD12	1:D:236:PHE:HB3	2.01	0.43
1:D:61:TYR:CD1	1:D:606:CYS:SG	3.11	0.43
1:D:553:HIS:O	1:D:553:HIS:ND1	2.50	0.43
1:D:318:LEU:HD12	1:D:329:LEU:HD21	2.00	0.43
1:A:533:LEU:HD12	1:A:534:PRO:CD	2.49	0.43
1:B:81:ASP:C	1:B:81:ASP:OD1	2.57	0.43
1:B:213:PHE:CD1	1:B:434:GLN:HG3	2.54	0.43
1:D:362:VAL:HG23	1:D:522:MET:SD	2.59	0.43
1:D:362:VAL:HG22	1:D:473:PHE:HB2	2.00	0.43
1:C:207:GLN:HA	6:C:872:HOH:O	2.17	0.43
1:C:187:ASP:HB3	1:C:190:ALA:HB3	2.01	0.42
1:C:557:PHE:CE1	1:C:568:THR:HG21	2.54	0.42
1:C:300:ILE:HD13	1:C:311:ILE:HG12	2.01	0.42
1:D:361:LEU:HD23	1:D:541:MET:CB	2.50	0.42
1:D:49:VAL:HB	1:D:72:VAL:HG22	2.00	0.42
1:D:532:PHE:CZ	1:D:538:PRO:HG3	2.54	0.42
1:A:390:THR:O	1:A:390:THR:CG2	2.68	0.42
1:D:175:PHE:CE1	1:D:592:ALA:HB3	2.54	0.42
1:A:159:ARG:HA	2:A:801:FDA:O2B	2.20	0.42
1:D:471:TRP:CZ2	1:D:526:SER:HA	2.55	0.42
1:D:361:LEU:HD23	1:D:541:MET:HB2	2.00	0.42
1:B:62:ALA:O	1:B:66:VAL:HB	2.19	0.42
1:A:362:VAL:HA	1:A:539:GLN:O	2.20	0.42
1:D:152:LEU:HD23	1:D:543:PRO:HB2	2.02	0.42
1:D:555:MET:SD	1:D:568:THR:HA	2.60	0.42
1:A:606:CYS:O	1:A:610:LYS:HG3	2.19	0.42
1:A:380:MET:CE	1:A:409:ASN:HB3	2.49	0.42
1:C:533:LEU:HD12	1:C:534:PRO:HD2	2.02	0.42
1:D:286:VAL:O	1:D:332:SER:HB3	2.19	0.42

Continued on next page...

Continued from previous page...

Atom-1	Atom-2	Interatomic distance (Å)	Clash overlap (Å)
1:A:395:TYR:O	1:A:397:PRO:HD3	2.20	0.42
1:C:61:TYR:CD1	1:C:317:VAL:HG11	2.55	0.42
1:B:349:LEU:HD11	1:B:572:VAL:HG13	2.01	0.42
1:D:79:GLU:CG	1:D:280:ALA:HB2	2.48	0.41
1:C:346:PRO:HG2	1:C:350:PRO:HA	2.02	0.41
1:D:606:CYS:O	1:D:610:LYS:HG3	2.20	0.41
1:A:390:THR:O	1:A:390:THR:HG22	2.21	0.41
1:A:216:SER:HB2	1:A:431:PRO:HB2	2.01	0.41
1:C:218:ARG:HD2	6:C:928:HOH:O	2.18	0.41
1:D:61:TYR:CG	1:D:317:VAL:HG11	2.55	0.41
1:D:612:ASN:O	1:D:613:PHE:CD2	2.73	0.41
1:C:72:VAL:O	1:C:275:PHE:HA	2.20	0.41
1:A:579:PHE:O	1:A:580:LEU:HD23	2.20	0.41
1:A:385:THR:HA	1:A:386:PRO:HD3	1.92	0.41
1:A:201:LYS:HB3	1:A:603:ILE:HD13	2.02	0.41
1:C:363:PHE:O	1:C:538:PRO:HA	2.19	0.41
1:B:358:GLU:HG2	1:B:544:GLY:HA2	2.03	0.41
1:A:380:MET:HE1	1:A:409:ASN:CA	2.50	0.41
1:C:131:TRP:CE3	1:D:467:LEU:HD11	2.56	0.41
1:A:320:ALA:O	1:A:324:HIS:HB2	2.21	0.41
1:A:133:ALA:HB3	5:A:804:MES:H31	2.02	0.41
1:A:81:ASP:O	1:B:83:GLY:N	2.54	0.41
1:A:47:TYR:O	1:A:313:ALA:HA	2.21	0.41
1:A:329:LEU:O	1:A:334:PHE:HB2	2.21	0.41
1:C:614:THR:HA	1:C:615:PRO:HD3	2.01	0.41
1:B:487:PHE:CE1	1:B:500:PRO:HB3	2.56	0.41
1:C:336:GLN:NE2	1:C:344:ASN:O	2.54	0.41
1:C:359:GLN:HG2	1:C:475:GLY:O	2.20	0.41
1:D:66:VAL:HG13	1:D:273:GLU:HB3	2.03	0.41
1:B:159:ARG:HA	2:B:801:FDA:O2B	2.20	0.40
1:B:56:PRO:HD3	1:B:165:SER:HB3	2.03	0.40
2:A:801:FDA:HN1	2:A:801:FDA:H1'2	1.71	0.40
1:A:84:LEU:CD1	1:B:80:ILE:HD12	2.50	0.40
1:D:169:THR:HG22	1:D:169:THR:O	2.21	0.40
1:B:55:GLY:N	6:B:905:HOH:O	2.53	0.40
1:A:532:PHE:CZ	1:A:538:PRO:HG3	2.56	0.40
1:C:211:ASP:N	1:C:211:ASP:OD1	2.53	0.40
1:A:152:LEU:O	1:A:155:GLN:HB2	2.20	0.40
1:C:213:PHE:CD1	1:C:434:GLN:HG3	2.57	0.40
1:B:355:TYR:HA	1:B:480:LYS:O	2.21	0.40
1:D:418:GLN:CD	6:D:1082:HOH:O	2.59	0.40

Continued on next page...

Continued from previous page...

Atom-1	Atom-2	Interatomic distance (Å)	Clash overlap (Å)
5:A:804:MES:H22	1:D:149:LEU:HD22	2.02	0.40

There are no symmetry-related clashes.

5.3 Torsion angles [i](#)

5.3.1 Protein backbone [i](#)

In the following table, the Percentiles column shows the percent Ramachandran outliers of the chain as a percentile score with respect to all X-ray entries followed by that with respect to entries of similar resolution.

The Analysed column shows the number of residues for which the backbone conformation was analysed, and the total number of residues.

Mol	Chain	Analysed	Favoured	Allowed	Outliers	Percentiles	
1	A	574/633 (91%)	551 (96%)	22 (4%)	1 (0%)	52	64
1	B	574/633 (91%)	556 (97%)	18 (3%)	0	100	100
1	C	572/633 (90%)	552 (96%)	20 (4%)	0	100	100
1	D	572/633 (90%)	545 (95%)	27 (5%)	0	100	100
All	All	2292/2532 (90%)	2204 (96%)	87 (4%)	1 (0%)	100	100

All (1) Ramachandran outliers are listed below:

Mol	Chain	Res	Type
1	A	82	SER

5.3.2 Protein sidechains [i](#)

In the following table, the Percentiles column shows the percent sidechain outliers of the chain as a percentile score with respect to all X-ray entries followed by that with respect to entries of similar resolution.

The Analysed column shows the number of residues for which the sidechain conformation was analysed, and the total number of residues.

Mol	Chain	Analysed	Rotameric	Outliers	Percentiles	
1	A	504/548 (92%)	496 (98%)	8 (2%)	70	84

Continued on next page...

Continued from previous page...

Mol	Chain	Analysed	Rotameric	Outliers	Percentiles	
1	B	504/548 (92%)	494 (98%)	10 (2%)	63	79
1	C	502/548 (92%)	493 (98%)	9 (2%)	66	82
1	D	502/548 (92%)	493 (98%)	9 (2%)	66	82
All	All	2012/2192 (92%)	1976 (98%)	36 (2%)	66	82

All (36) residues with a non-rotameric sidechain are listed below:

Mol	Chain	Res	Type
1	A	112	MET
1	A	168	TRP
1	A	201	LYS
1	A	272	GLU
1	A	392	SER
1	A	450	HIS
1	A	462	SER
1	A	593	ASN
1	B	112	MET
1	B	168	TRP
1	B	204	SER
1	B	206	PHE
1	B	216	SER
1	B	279	PRO
1	B	408	TRP
1	B	462	SER
1	B	481	GLU
1	B	593	ASN
1	C	112	MET
1	C	168	TRP
1	C	206	PHE
1	C	381	THR
1	C	385	THR
1	C	408	TRP
1	C	450	HIS
1	C	462	SER
1	C	593	ASN
1	D	82	SER
1	D	112	MET
1	D	168	TRP
1	D	286	VAL
1	D	326	THR
1	D	344	ASN

Continued on next page...

Continued from previous page...

Mol	Chain	Res	Type
1	D	348	LEU
1	D	408	TRP
1	D	593	ASN

Some sidechains can be flipped to improve hydrogen bonding and reduce clashes. All (6) such sidechains are listed below:

Mol	Chain	Res	Type
1	A	344	ASN
1	B	105	ASN
1	C	224	ASN
1	C	324	HIS
1	D	344	ASN
1	D	612	ASN

5.3.3 RNA [i](#)

There are no RNA molecules in this entry.

5.4 Non-standard residues in protein, DNA, RNA chains [i](#)

There are no non-standard protein/DNA/RNA residues in this entry.

5.5 Carbohydrates [i](#)

There are no carbohydrates in this entry.

5.6 Ligand geometry [i](#)

14 ligands are modelled in this entry.

In the following table, the Counts columns list the number of bonds (or angles) for which Mogul statistics could be retrieved, the number of bonds (or angles) that are observed in the model and the number of bonds (or angles) that are defined in the chemical component dictionary. The Link column lists molecule types, if any, to which the group is linked. The Z score for a bond length (or angle) is the number of standard deviations the observed value is removed from the expected value. A bond length (or angle) with $|Z| > 2$ is considered an outlier worth inspection. RMSZ is the root-mean-square of all Z scores of the bond lengths (or angles).

Mol	Type	Chain	Res	Link	Bond lengths			Bond angles		
					Counts	RMSZ	# Z > 2	Counts	RMSZ	# Z > 2
2	FDA	A	801	1	48,58,58	1.31	7 (14%)	54,89,89	5.35	17 (31%)
3	2H5	A	802	-	12,12,12	2.38	4 (33%)	15,17,17	4.31	8 (53%)
4	12P	A	803	-	12,12,36	0.73	0	11,11,35	0.62	0
5	MES	A	804	-	11,12,12	1.22	1 (9%)	14,16,16	5.12	3 (21%)
2	FDA	B	801	1	48,58,58	1.43	8 (16%)	54,89,89	4.48	20 (37%)
3	2H5	B	802	-	12,12,12	1.58	1 (8%)	15,17,17	2.30	5 (33%)
4	12P	B	803	-	15,15,36	0.66	0	14,14,35	0.71	0
4	12P	B	804	-	15,15,36	0.58	0	14,14,35	0.73	0
5	MES	C	701	-	11,12,12	1.28	1 (9%)	14,16,16	3.63	4 (28%)
2	FDA	C	702	1	48,58,58	1.62	11 (22%)	54,89,89	4.58	19 (35%)
3	2H5	C	703	-	12,12,12	2.13	2 (16%)	15,17,17	4.74	6 (40%)
2	FDA	D	801	1	48,58,58	1.30	4 (8%)	54,89,89	3.59	20 (37%)
3	2H5	D	802	-	12,12,12	1.81	2 (16%)	15,17,17	4.04	6 (40%)
4	12P	D	803	-	11,11,36	0.81	0	10,10,35	0.30	0

In the following table, the Chirals column lists the number of chiral outliers, the number of chiral centers analysed, the number of these observed in the model and the number defined in the chemical component dictionary. Similar counts are reported in the Torsion and Rings columns. '-' means no outliers of that kind were identified.

Mol	Type	Chain	Res	Link	Chirals	Torsions	Rings
2	FDA	A	801	1	-	0/30/50/50	0/6/6/6
3	2H5	A	802	-	-	0/2/22/22	0/1/1/1
4	12P	A	803	-	-	0/10/10/34	0/0/0/0
5	MES	A	804	-	-	0/6/14/14	0/1/1/1
2	FDA	B	801	1	-	0/30/50/50	0/6/6/6
3	2H5	B	802	-	-	0/2/22/22	0/1/1/1
4	12P	B	803	-	-	0/13/13/34	0/0/0/0
4	12P	B	804	-	-	0/13/13/34	0/0/0/0
5	MES	C	701	-	-	0/6/14/14	0/1/1/1
2	FDA	C	702	1	-	0/30/50/50	0/6/6/6
3	2H5	C	703	-	-	0/2/22/22	0/1/1/1
2	FDA	D	801	1	-	0/30/50/50	0/6/6/6
3	2H5	D	802	-	-	0/2/22/22	0/1/1/1
4	12P	D	803	-	-	0/9/9/34	0/0/0/0

All (41) bond length outliers are listed below:

Mol	Chain	Res	Type	Atoms	Z	Observed(Å)	Ideal(Å)
2	B	801	FDA	O3B-C3B	-2.97	1.35	1.43

Continued on next page...

Continued from previous page...

Mol	Chain	Res	Type	Atoms	Z	Observed(Å)	Ideal(Å)
2	D	801	FDA	C9A-C5X	-2.89	1.36	1.42
2	C	702	FDA	C9A-C5X	-2.87	1.36	1.42
2	C	702	FDA	C10-N10	-2.77	1.35	1.39
2	C	702	FDA	C4A-N3A	-2.74	1.31	1.35
2	A	801	FDA	O2B-C2B	-2.61	1.36	1.43
2	C	702	FDA	O3'-C3'	-2.48	1.37	1.43
2	D	801	FDA	O3B-C3B	-2.26	1.37	1.43
2	A	801	FDA	C4A-N3A	-2.17	1.32	1.35
2	C	702	FDA	C5X-N5	-2.15	1.31	1.35
2	B	801	FDA	O4'-C4'	-2.14	1.38	1.43
2	C	702	FDA	O2B-C2B	-2.14	1.37	1.43
2	B	801	FDA	O2B-C2B	-2.10	1.37	1.43
2	A	801	FDA	C2A-N3A	2.05	1.35	1.32
3	A	802	2H5	C3-C2	2.09	1.53	1.52
3	A	802	2H5	C1-C2	2.10	1.56	1.52
3	A	802	2H5	O1-C1	2.12	1.46	1.39
5	A	804	MES	O3S-S	2.12	1.51	1.46
2	D	801	FDA	C4-N3	2.13	1.37	1.33
2	A	801	FDA	C4-N3	2.14	1.37	1.33
2	A	801	FDA	C8M-C8	2.21	1.55	1.51
2	C	702	FDA	C9-C8	2.26	1.44	1.37
2	B	801	FDA	C10-N1	2.28	1.39	1.35
2	B	801	FDA	C8M-C8	2.30	1.55	1.51
2	B	801	FDA	C2A-N1A	2.39	1.38	1.33
2	A	801	FDA	C9A-N10	2.44	1.42	1.38
3	D	802	2H5	C4-C5	2.44	1.58	1.53
3	C	703	2H5	C4-C5	2.48	1.58	1.53
2	C	702	FDA	C2A-N1A	2.51	1.38	1.33
2	C	702	FDA	O4B-C1B	2.52	1.44	1.41
5	C	701	MES	O3S-S	2.54	1.53	1.46
2	C	702	FDA	C2A-N3A	3.56	1.38	1.32
2	B	801	FDA	C2A-N3A	3.65	1.38	1.32
2	A	801	FDA	C4-C4X	3.77	1.48	1.41
2	B	801	FDA	C4-C4X	4.06	1.49	1.41
2	C	702	FDA	C4-C4X	4.30	1.49	1.41
2	D	801	FDA	C4-C4X	4.34	1.49	1.41
3	B	802	2H5	C3-C4	5.03	1.56	1.52
3	D	802	2H5	C3-C4	5.44	1.56	1.52
3	C	703	2H5	C3-C4	6.70	1.57	1.52
3	A	802	2H5	C3-C4	6.91	1.58	1.52

All (108) bond angle outliers are listed below:

Mol	Chain	Res	Type	Atoms	Z	Observed(°)	Ideal(°)
2	B	801	FDA	C4-C4X-C10	-20.66	106.72	119.94
2	A	801	FDA	C4X-C4-N3	-14.61	103.61	123.59
2	A	801	FDA	N3A-C2A-N1A	-13.48	118.58	128.89
2	D	801	FDA	N3A-C2A-N1A	-13.18	118.81	128.89
2	B	801	FDA	N3A-C2A-N1A	-13.06	118.90	128.89
2	D	801	FDA	C4-C4X-C10	-12.48	111.95	119.94
2	C	702	FDA	N3A-C2A-N1A	-11.49	120.09	128.89
2	C	702	FDA	C4X-C4-N3	-11.26	108.19	123.59
5	A	804	MES	O1S-S-C8	-9.87	98.48	106.91
2	C	702	FDA	C4-C4X-C10	-6.89	115.53	119.94
2	B	801	FDA	C4X-C10-N10	-5.16	117.48	120.52
3	C	703	2H5	C1-O5-C5	-5.10	104.05	113.47
2	A	801	FDA	C4X-C10-N10	-4.96	117.60	120.52
2	D	801	FDA	C1B-N9A-C4A	-4.73	119.81	126.94
2	D	801	FDA	C4X-C4-N3	-4.64	117.25	123.59
2	A	801	FDA	C4-C4X-C10	-4.48	117.08	119.94
2	C	702	FDA	C5X-C9A-N10	-4.09	114.51	117.62
2	C	702	FDA	C4X-C10-N10	-3.87	118.24	120.52
5	A	804	MES	O3S-S-O2S	-3.83	102.69	111.61
3	B	802	2H5	O5-C1-C2	-3.44	104.31	109.80
2	C	702	FDA	C4A-C5A-N7A	-3.29	106.45	109.48
5	C	701	MES	O2S-S-O1S	-3.11	102.14	113.48
2	C	702	FDA	O2'-C2'-C1'	-3.05	102.46	109.94
3	D	802	2H5	F3-C3-C2	-2.89	106.48	108.52
2	A	801	FDA	C7-C6-C5X	-2.84	116.28	120.92
2	C	702	FDA	C1B-N9A-C4A	-2.79	122.74	126.94
2	B	801	FDA	C9A-C5X-N5	-2.77	118.26	122.36
2	D	801	FDA	C4X-C10-N10	-2.67	118.95	120.52
3	D	802	2H5	O1-C1-C2	-2.65	102.10	109.21
3	B	802	2H5	O4-C4-C5	-2.47	102.70	109.24
2	B	801	FDA	C6-C5X-C9A	-2.44	115.77	118.98
2	B	801	FDA	C9-C8-C7	-2.15	115.93	120.04
2	B	801	FDA	C4A-C5A-N7A	-2.08	107.57	109.48
2	D	801	FDA	C5X-C9A-N10	-2.06	116.06	117.62
2	C	702	FDA	O3'-C3'-C2'	-2.01	103.68	108.75
2	D	801	FDA	C4B-O4B-C1B	-2.00	107.52	109.72
2	B	801	FDA	C1'-N10-C9A	2.02	121.13	118.86
2	A	801	FDA	C2B-C3B-C4B	2.13	106.99	102.61
2	C	702	FDA	O2A-PA-O3P	2.14	114.80	105.09
2	C	702	FDA	O4B-C1B-N9A	2.19	112.67	108.10
2	A	801	FDA	O4B-C4B-C5B	2.28	117.47	109.32
2	D	801	FDA	O2B-C2B-C3B	2.38	119.58	111.83
3	A	802	2H5	O2-C2-C1	2.40	115.10	109.82

Continued on next page...

Continued from previous page...

Mol	Chain	Res	Type	Atoms	Z	Observed(°)	Ideal(°)
2	D	801	FDA	O4B-C4B-C3B	2.42	110.02	105.15
2	B	801	FDA	O3B-C3B-C2B	2.42	119.69	111.83
2	D	801	FDA	O3P-PA-O5B	2.42	109.36	102.94
2	D	801	FDA	O4'-C4'-C3'	2.43	115.11	109.02
3	A	802	2H5	C3-C2-C1	2.48	115.19	110.46
2	D	801	FDA	C1'-N10-C9A	2.52	121.69	118.86
2	B	801	FDA	O2A-PA-O3P	2.53	116.56	105.09
2	B	801	FDA	C4X-N5-C5X	2.55	119.69	116.76
3	B	802	2H5	O2-C2-C3	2.56	113.62	109.05
3	D	802	2H5	C1-O5-C5	2.57	118.23	113.47
2	A	801	FDA	O4B-C1B-N9A	2.62	113.58	108.10
3	C	703	2H5	O2-C2-C3	2.74	113.94	109.05
3	A	802	2H5	O4-C4-C3	2.78	114.01	109.05
2	A	801	FDA	C4X-N5-C5X	2.83	120.02	116.76
3	B	802	2H5	O4-C4-C3	2.87	114.18	109.05
2	B	801	FDA	C4B-O4B-C1B	2.88	112.89	109.72
5	C	701	MES	O2S-S-C8	2.92	109.40	106.91
2	B	801	FDA	O2B-C2B-C3B	3.02	121.66	111.83
3	A	802	2H5	C1-O5-C5	3.04	119.09	113.47
2	A	801	FDA	O2B-C2B-C3B	3.13	122.00	111.83
2	B	801	FDA	C2B-C3B-C4B	3.18	109.15	102.61
2	D	801	FDA	C5B-C4B-C3B	3.20	127.91	115.21
2	A	801	FDA	O3B-C3B-C2B	3.26	122.42	111.83
2	A	801	FDA	O3B-C3B-C4B	3.26	120.83	111.05
2	D	801	FDA	C2A-N1A-C6A	3.34	124.73	118.77
3	D	802	2H5	O4-C4-C3	3.37	115.07	109.05
3	C	703	2H5	O2-C2-C1	3.41	117.33	109.82
2	C	702	FDA	C5B-C4B-C3B	3.60	129.48	115.21
2	B	801	FDA	O3B-C3B-C4B	3.67	122.06	111.05
2	A	801	FDA	C5B-C4B-C3B	3.68	129.80	115.21
2	B	801	FDA	C5B-C4B-C3B	3.69	129.85	115.21
2	A	801	FDA	C4-C4X-N5	3.77	123.29	118.72
2	C	702	FDA	O2B-C2B-C3B	3.87	124.41	111.83
3	D	802	2H5	O5-C5-C4	3.89	116.98	109.68
2	D	801	FDA	O4B-C1B-N9A	3.92	116.30	108.10
2	C	702	FDA	C1'-N10-C9A	4.04	123.39	118.86
2	C	702	FDA	O3B-C3B-C4B	4.05	123.19	111.05
2	B	801	FDA	O4B-C1B-N9A	4.22	116.92	108.10
2	D	801	FDA	O3B-C3B-C4B	4.22	123.71	111.05
3	A	802	2H5	O5-C5-C4	4.24	117.64	109.68
3	A	802	2H5	O1-C1-C2	4.38	120.96	109.21
5	C	701	MES	C6-C5-N4	4.43	116.84	110.12

Continued on next page...

Continued from previous page...

Mol	Chain	Res	Type	Atoms	Z	Observed(°)	Ideal(°)
3	C	703	2H5	O5-C5-C4	4.58	118.28	109.68
2	D	801	FDA	C4X-N5-C5X	5.40	122.97	116.76
2	C	702	FDA	C4X-N5-C5X	5.59	123.19	116.76
3	B	802	2H5	F3-C3-C4	6.00	112.78	108.52
2	C	702	FDA	C4-C4X-N5	6.05	126.06	118.72
2	D	801	FDA	C2B-C1B-N9A	6.12	123.65	114.29
2	D	801	FDA	C4-N3-C2	6.20	120.61	115.25
3	A	802	2H5	O5-C1-C2	7.03	121.01	109.80
2	A	801	FDA	C1'-N10-C9A	7.07	126.80	118.86
2	C	702	FDA	C2B-C1B-N9A	7.46	125.69	114.29
2	D	801	FDA	C4-C4X-N5	8.99	129.63	118.72
3	C	703	2H5	F3-C3-C4	9.55	115.29	108.52
2	B	801	FDA	C4-N3-C2	9.81	123.73	115.25
2	B	801	FDA	C4-C4X-N5	10.18	131.08	118.72
2	B	801	FDA	C2B-C1B-N9A	10.63	130.54	114.29
2	A	801	FDA	C2B-C1B-N9A	11.46	131.81	114.29
5	C	701	MES	O1S-S-C8	11.87	117.04	106.91
3	A	802	2H5	F3-C3-C4	12.45	117.35	108.52
3	C	703	2H5	O5-C1-C2	13.02	130.57	109.80
3	D	802	2H5	F3-C3-C4	13.68	118.23	108.52
5	A	804	MES	O2S-S-C8	15.47	120.11	106.91
2	C	702	FDA	C4-N3-C2	23.00	135.13	115.25
2	A	801	FDA	C4-N3-C2	28.09	139.53	115.25

There are no chirality outliers.

There are no torsion outliers.

There are no ring outliers.

8 monomers are involved in 23 short contacts:

Mol	Chain	Res	Type	Clashes	Symm-Clashes
2	A	801	FDA	4	0
3	A	802	2H5	2	0
5	A	804	MES	8	0
2	B	801	FDA	4	0
3	B	802	2H5	1	0
2	C	702	FDA	3	0
3	C	703	2H5	3	0
2	D	801	FDA	3	0

5.7 Other polymers

There are no such residues in this entry.

5.8 Polymer linkage issues

There are no chain breaks in this entry.

6 Fit of model and data

6.1 Protein, DNA and RNA chains

In the following table, the column labelled ‘#RSRZ> 2’ contains the number (and percentage) of RSRZ outliers, followed by percent RSRZ outliers for the chain as percentile scores relative to all X-ray entries and entries of similar resolution. The OWAB column contains the minimum, median, 95th percentile and maximum values of the occupancy-weighted average B-factor per residue. The column labelled ‘Q< 0.9’ lists the number of (and percentage) of residues with an average occupancy less than 0.9.

Mol	Chain	Analysed	<RSRZ>	#RSRZ>2	OWAB(Å ²)	Q<0.9
1	A	576/633 (90%)	-0.30	5 (0%) 85 89	22, 30, 51, 71	0
1	B	576/633 (90%)	-0.27	8 (1%) 78 83	21, 31, 61, 93	0
1	C	574/633 (90%)	-0.16	11 (1%) 70 76	24, 37, 60, 109	0
1	D	574/633 (90%)	0.06	24 (4%) 40 49	26, 47, 77, 109	0
All	All	2300/2532 (90%)	-0.17	48 (2%) 67 74	21, 36, 67, 109	0

All (48) RSRZ outliers are listed below:

Mol	Chain	Res	Type	RSRZ
1	C	389	LEU	6.3
1	C	390	THR	5.7
1	B	343	ALA	5.0
1	D	582	GLY	4.5
1	C	383	ARG	4.0
1	C	458	ALA	3.8
1	B	390	THR	3.7
1	D	581	GLY	3.7
1	D	618	PHE	3.6
1	A	44	ASP	3.4
1	C	385	THR	3.4
1	D	560	LYS	3.2
1	B	388	GLU	3.1
1	D	400	SER	3.1
1	B	44	ASP	3.0
1	A	57	ILE	2.9
1	D	583	CYS	2.8
1	B	401	THR	2.8
1	C	384	GLY	2.7
1	D	385	THR	2.7
1	D	319	THR	2.6

Continued on next page...

Continued from previous page...

Mol	Chain	Res	Type	RSRZ
1	D	551	GLY	2.5
1	D	317	VAL	2.5
1	C	189	ASP	2.5
1	B	345	PRO	2.5
1	C	57	ILE	2.4
1	D	45	ILE	2.4
1	D	322	ALA	2.4
1	D	595	THR	2.4
1	D	388	GLU	2.4
1	B	389	LEU	2.3
1	D	456	TYR	2.2
1	D	594	PRO	2.2
1	D	580	LEU	2.2
1	D	343	ALA	2.2
1	C	343	ALA	2.1
1	D	458	ALA	2.1
1	D	184	VAL	2.1
1	D	51	ILE	2.1
1	D	182	LEU	2.1
1	D	552	THR	2.1
1	D	398	GLY	2.1
1	C	55	GLY	2.0
1	B	385	THR	2.0
1	A	320	ALA	2.0
1	A	232	GLY	2.0
1	A	321	GLY	2.0
1	C	344	ASN	2.0

6.2 Non-standard residues in protein, DNA, RNA chains [i](#)

There are no non-standard protein/DNA/RNA residues in this entry.

6.3 Carbohydrates [i](#)

There are no carbohydrates in this entry.

6.4 Ligands [i](#)

In the following table, the Atoms column lists the number of modelled atoms in the group and the number defined in the chemical component dictionary. LLDF column lists the quality of electron density of the group with respect to its neighbouring residues in protein, DNA or RNA chains.

The B-factors column lists the minimum, median, 95th percentile and maximum values of B factors of atoms in the group. The column labelled 'Q< 0.9' lists the number of atoms with occupancy less than 0.9.

Mol	Type	Chain	Res	Atoms	RSCC	RSR	LLDF	B-factors(Å ²)	Q<0.9
5	MES	A	804	12/12	0.92	0.36	9.35	36,55,62,62	0
4	12P	B	804	16/37	0.85	0.24	7.01	35,44,46,49	0
4	12P	B	803	16/37	0.87	0.18	4.39	35,38,54,57	0
4	12P	D	803	12/37	0.89	0.22	2.71	38,43,46,48	0
5	MES	C	701	12/12	0.93	0.18	2.63	38,40,46,46	0
4	12P	A	803	13/37	0.89	0.16	2.59	37,40,47,49	0
3	2H5	D	802	12/12	0.85	0.20	1.46	42,43,45,46	0
2	FDA	B	801	53/53	0.97	0.14	0.21	22,26,30,31	0
3	2H5	C	703	12/12	0.88	0.15	-0.00	35,39,44,47	0
2	FDA	A	801	53/53	0.97	0.15	-0.07	22,27,30,35	0
3	2H5	A	802	12/12	0.93	0.12	-0.09	28,33,37,38	0
3	2H5	B	802	12/12	0.93	0.13	-0.13	34,39,44,45	0
2	FDA	C	702	53/53	0.97	0.12	-0.51	24,29,33,35	0
2	FDA	D	801	53/53	0.96	0.11	-0.88	31,36,40,44	0

6.5 Other polymers [i](#)

There are no such residues in this entry.