



# wwPDB X-ray Structure Validation Summary Report ⓘ

Feb 1, 2016 – 06:46 PM GMT

PDB ID : 4MPU  
Title : Human beta-tryptase co-crystal structure with (6S,8R)-N,N'-bis[3-({4-[3-(aminomethyl)phenyl]piperidin-1-yl}carbonyl)phenyl]-8-hydroxy-6-(1-hydroxycyclobutyl)-5,7-dioxaspiro[3.4]octane-6,8-dicarboxamide  
Authors : White, A.; Stein, A.J.; Suto, R.K.  
Deposited on : 2013-09-13  
Resolution : 1.65 Å(reported)

This is a wwPDB X-ray Structure Validation Summary Report for a publicly released PDB entry.  
We welcome your comments at [validation@mail.wwpdb.org](mailto:validation@mail.wwpdb.org)  
A user guide is available at  
<http://wwpdb.org/validation/2016/XrayValidationReportHelp>  
with specific help available everywhere you see the ⓘ symbol.

---

The following versions of software and data (see [references ⓘ](#)) were used in the production of this report:

MolProbity : 4.02b-467  
Mogul : 1.7 (RC4), CSD as536be (2015)  
Xtriage (Phenix) : 1.9-1692  
EDS : rb-20026688  
Percentile statistics : 20151230.v01 (using entries in the PDB archive December 30th 2015)  
Refmac : 5.8.0135  
CCP4 : 6.5.0  
Ideal geometry (proteins) : Engh & Huber (2001)  
Ideal geometry (DNA, RNA) : Parkinson et al. (1996)  
Validation Pipeline (wwPDB-VP) : trunk26865

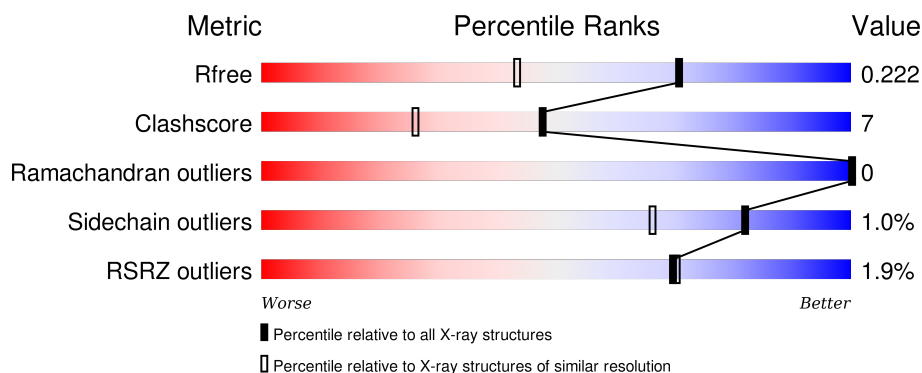
# 1 Overall quality at a glance

The following experimental techniques were used to determine the structure:

## *X-RAY DIFFRACTION*

The reported resolution of this entry is 1.65 Å.

Percentile scores (ranging between 0-100) for global validation metrics of the entry are shown in the following graphic. The table shows the number of entries on which the scores are based.



Metric	Whole archive (#Entries)	Similar resolution (#Entries, resolution range(Å))
$R_{free}$	91344	1953 (1.66-1.62)
Clashscore	102246	2091 (1.66-1.62)
Ramachandran outliers	100387	2052 (1.66-1.62)
Sidechain outliers	100360	2052 (1.66-1.62)
RSRZ outliers	91569	1955 (1.66-1.62)

The table below summarises the geometric issues observed across the polymeric chains and their fit to the electron density. The red, orange, yellow and green segments on the lower bar indicate the fraction of residues that contain outliers for  $\geq 3$ , 2, 1 and 0 types of geometric quality criteria. A grey segment represents the fraction of residues that are not modelled. The numeric value for each fraction is indicated below the corresponding segment, with a dot representing fractions  $\leq 5\%$ . The upper red bar (where present) indicates the fraction of residues that have poor fit to the electron density. The numeric value is given above the bar.

Mol	Chain	Length	Quality of chain
1	A	245	<div> <div style="width: 100%; height: 10px; background: linear-gradient(to right, red 2%, orange 1%, yellow 12%, green 86%, grey 0%);"></div> <div style="display: flex; justify-content: space-between; width: 100%;"> <span>2%</span> <span>86%</span> <span>12%</span> <span>..</span> </div> </div>
1	B	245	<div> <div style="width: 100%; height: 10px; background: linear-gradient(to right, red 2%, orange 1%, yellow 8%, green 91%, grey 0%);"></div> <div style="display: flex; justify-content: space-between; width: 100%;"> <span>2%</span> <span>91%</span> <span>8%</span> <span>.</span> </div> </div>

The following table lists non-polymeric compounds, carbohydrate monomers and non-standard residues in protein, DNA, RNA chains that are outliers for geometric or electron-density-fit criteria:

Mol	Type	Chain	Res	Chirality	Geometry	Clashes	Electron density
2	MES	A	301	-	-	-	X
4	PG4	A	303	-	-	-	X
4	PG4	B	306	-	-	-	X
5	X2A	B	301[A]	-	-	-	X
5	X2A	B	301[B]	-	-	-	X
5	X2A	B	301[C]	X	-	-	X
5	X2A	B	301[D]	X	-	-	X

## 2 Entry composition [i](#)

There are 6 unique types of molecules in this entry. The entry contains 4793 atoms, of which 0 are hydrogens and 0 are deuteriums.

In the tables below, the ZeroOcc column contains the number of atoms modelled with zero occupancy, the AltConf column contains the number of residues with at least one atom in alternate conformation and the Trace column contains the number of residues modelled with at most 2 atoms.

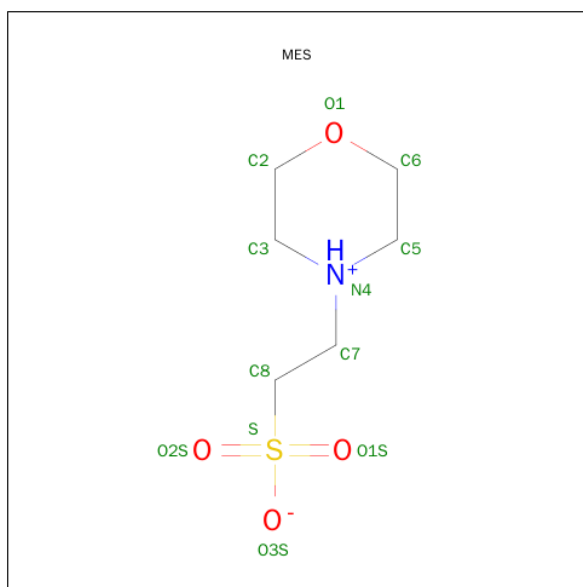
- Molecule 1 is a protein called Tryptase alpha/beta-1.

Mol	Chain	Residues	Atoms					ZeroOcc	AltConf	Trace
1	A	243	Total	C	N	O	S	0	10	0
			1999	1278	353	356	12			
1	B	243	Total	C	N	O	S	0	5	0
			1953	1250	346	345	12			

There are 2 discrepancies between the modelled and reference sequences:

Chain	Residue	Modelled	Actual	Comment	Reference
A	132	LYS	ASN	SEE REMARK 999	UNP Q15661
B	132	LYS	ASN	SEE REMARK 999	UNP Q15661

- Molecule 2 is 2-(N-MORPHOLINO)-ETHANESULFONIC ACID (three-letter code: MES) (formula: C<sub>6</sub>H<sub>13</sub>NO<sub>4</sub>S).



Mol	Chain	Residues	Atoms					ZeroOcc	AltConf
2	A	1	Total	C	N	O	S	0	0
			12	6	1	4	1		

*Continued on next page...*

*Continued from previous page...*

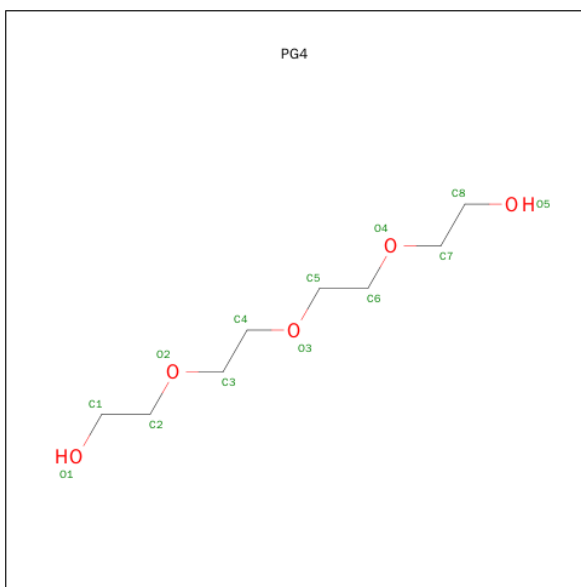
Mol	Chain	Residues	Atoms					ZeroOcc	AltConf
2	B	1	Total	C	N	O	S	0	0
			12	6	1	4	1		

- Molecule 3 is SULFATE ION (three-letter code: SO<sub>4</sub>) (formula: O<sub>4</sub>S).



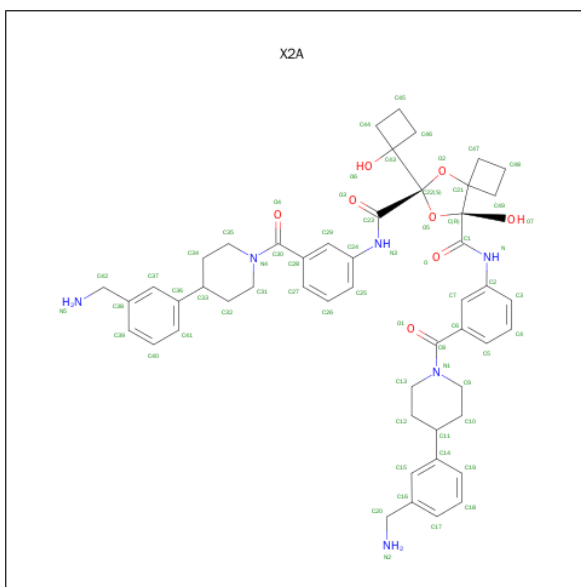
Mol	Chain	Residues	Atoms			ZeroOcc	AltConf
3	A	1	Total	O	S	0	0
			5	4	1		
3	B	1	Total	O	S	0	0
			5	4	1		
3	B	1	Total	O	S	0	0
			5	4	1		
3	B	1	Total	O	S	0	0
			5	4	1		

- Molecule 4 is TETRAETHYLENE GLYCOL (three-letter code: PG<sub>4</sub>) (formula: C<sub>8</sub>H<sub>18</sub>O<sub>5</sub>).



Mol	Chain	Residues	Atoms			ZeroOcc	AltConf
4	A	1	Total	C	O	0	0
			13	8	5		
4	B	1	Total	C	O	0	0
			13	8	5		

- Molecule 5 is (6S,8R)-N,N'-BIS[3-({4-[3-(AMINOMETHYL)PHENYL]PIPERIDIN-1-YL}CARBONYL)PHENYL]-8-HYDROXY-6-(1-HYDROXYCYCLOBUTYL)-5,7-DIOXASPIRO[3.4]OCTANE-6,8-DICARBOXAMIDE (three-letter code: X2A) (formula: C<sub>50</sub>H<sub>58</sub>N<sub>6</sub>O<sub>8</sub>).



Mol	Chain	Residues	Atoms				ZeroOcc	AltConf
5	B	1	Total	C	N	O	0	1
			256	200	24	32		

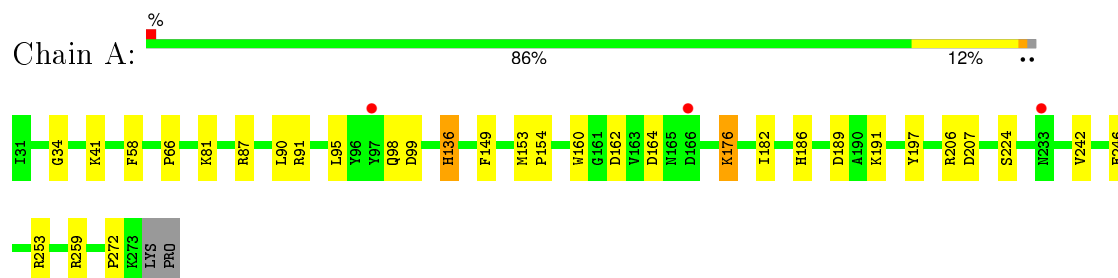
- Molecule 6 is water.

Mol	Chain	Residues	Atoms		ZeroOcc	AltConf
6	A	274	Total 274	O 274	0	0
6	B	241	Total 241	O 241	0	0

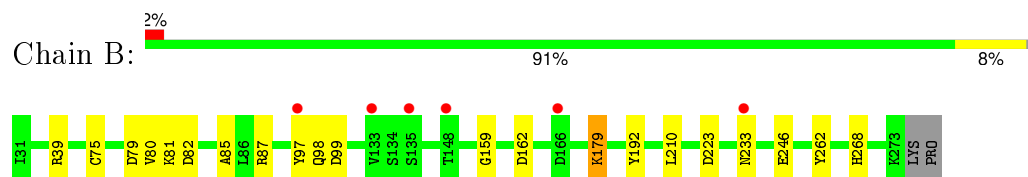
### 3 Residue-property plots [i](#)

These plots are drawn for all protein, RNA and DNA chains in the entry. The first graphic for a chain summarises the proportions of errors displayed in the second graphic. The second graphic shows the sequence view annotated by issues in geometry and electron density. Residues are color-coded according to the number of geometric quality criteria for which they contain at least one outlier: green = 0, yellow = 1, orange = 2 and red = 3 or more. A red dot above a residue indicates a poor fit to the electron density ( $\text{RSRZ} > 2$ ). Stretches of 2 or more consecutive residues without any outlier are shown as a green connector. Residues present in the sample, but not in the model, are shown in grey.

- Molecule 1: Tryptase alpha/beta-1



- Molecule 1: Tryptase alpha/beta-1





## 4 Data and refinement statistics

Property	Value	Source
Space group	P 31 2 1	Depositor
Cell constants a, b, c, $\alpha$ , $\beta$ , $\gamma$	78.16Å 78.16Å 165.04Å 90.00° 90.00° 120.00°	Depositor
Resolution (Å)	19.80 – 1.65 19.73 – 1.65	Depositor EDS
% Data completeness (in resolution range)	99.3 (19.80-1.65) 99.4 (19.73-1.65)	Depositor EDS
$R_{merge}$	0.07	Depositor
$R_{sym}$	(Not available)	Depositor
$\langle I/\sigma(I) \rangle$ <sup>1</sup>	2.02 (at 1.65Å)	Xtriage
Refinement program	REFMAC 5.7.0029	Depositor
R, $R_{free}$	0.178 , 0.216 0.188 , 0.222	Depositor DCC
$R_{free}$ test set	3575 reflections (5.33%)	DCC
Wilson B-factor (Å <sup>2</sup> )	20.7	Xtriage
Anisotropy	0.033	Xtriage
Bulk solvent $k_{sol}$ (e/Å <sup>3</sup> ), $B_{sol}$ (Å <sup>2</sup> )	0.38 , 40.5	EDS
Estimated twinning fraction	0.024 for -h,-k,l	Xtriage
L-test for twinning <sup>2</sup>	$\langle  L  \rangle = 0.50$ , $\langle L^2 \rangle = 0.34$	Xtriage
Outliers	0 of 70669 reflections	Xtriage
$F_o, F_c$ correlation	0.96	EDS
Total number of atoms	4793	wwPDB-VP
Average B, all atoms (Å <sup>2</sup> )	25.0	wwPDB-VP

Xtriage's analysis on translational NCS is as follows: *The largest off-origin peak in the Patterson function is 3.65% of the height of the origin peak. No significant pseudotranslation is detected.*

<sup>1</sup>Intensities estimated from amplitudes.

<sup>2</sup>Theoretical values of  $\langle |L| \rangle$ ,  $\langle L^2 \rangle$  for acentric reflections are 0.5, 0.375 respectively for untwinned datasets, and 0.333, 0.2 for perfectly twinned datasets.

## 5 Model quality [i](#)

### 5.1 Standard geometry [i](#)

Bond lengths and bond angles in the following residue types are not validated in this section: PG4, X2A, SO4, MES

The Z score for a bond length (or angle) is the number of standard deviations the observed value is removed from the expected value. A bond length (or angle) with  $|Z| > 5$  is considered an outlier worth inspection. RMSZ is the root-mean-square of all Z scores of the bond lengths (or angles).

Mol	Chain	Bond lengths		Bond angles	
		RMSZ	$\# Z  > 5$	RMSZ	$\# Z  > 5$
1	A	1.19	1/2074 (0.0%)	1.18	13/2837 (0.5%)
1	B	1.17	3/2024 (0.1%)	1.16	6/2773 (0.2%)
All	All	1.18	4/4098 (0.1%)	1.17	19/5610 (0.3%)

Chiral center outliers are detected by calculating the chiral volume of a chiral center and verifying if the center is modelled as a planar moiety or with the opposite hand. A planarity outlier is detected by checking planarity of atoms in a peptide group, atoms in a mainchain group or atoms of a sidechain that are expected to be planar.

Mol	Chain	#Chirality outliers	#Planarity outliers
1	A	0	1

All (4) bond length outliers are listed below:

Mol	Chain	Res	Type	Atoms	Z	Observed(Å)	Ideal(Å)
1	A	87	ARG	CZ-NH1	5.97	1.40	1.33
1	B	268	HIS	N-CA	5.05	1.56	1.46
1	B	159	GLY	N-CA	-5.04	1.38	1.46
1	B	75	CYS	CB-SG	-5.00	1.73	1.81

The worst 5 of 19 bond angle outliers are listed below:

Mol	Chain	Res	Type	Atoms	Z	Observed(°)	Ideal(°)
1	A	87	ARG	NE-CZ-NH1	11.54	126.07	120.30
1	A	87	ARG	NE-CZ-NH2	-7.75	116.42	120.30
1	A	253	ARG	NE-CZ-NH2	-7.48	116.56	120.30
1	B	82	ASP	CB-CG-OD2	-6.92	112.07	118.30
1	A	162	ASP	CB-CG-OD1	6.79	124.41	118.30

There are no chirality outliers.

All (1) planarity outliers are listed below:

Mol	Chain	Res	Type	Group
1	A	272	PRO	Peptide

## 5.2 Too-close contacts ⓘ

In the following table, the Non-H and H(model) columns list the number of non-hydrogen atoms and hydrogen atoms in the chain respectively. The H(added) column lists the number of hydrogen atoms added and optimized by MolProbity. The Clashes column lists the number of clashes within the asymmetric unit, whereas Symm-Clashes lists symmetry related clashes.

Mol	Chain	Non-H	H(model)	H(added)	Clashes	Symm-Clashes
1	A	1999	0	1932	18	0
1	B	1953	0	1884	13	0
2	A	12	0	13	0	0
2	B	12	0	13	1	0
3	A	5	0	0	0	0
3	B	15	0	0	1	0
4	A	13	0	18	4	0
4	B	13	0	18	2	0
5	B	256	0	231	31	0
6	A	274	0	0	7	0
6	B	241	0	0	9	0
All	All	4793	0	4109	62	0

The all-atom clashscore is defined as the number of clashes found per 1000 atoms (including hydrogen atoms). The all-atom clashscore for this structure is 7.

The worst 5 of 62 close contacts within the same asymmetric unit are listed below, sorted by their clash magnitude.

Atom-1	Atom-2	Interatomic distance (Å)	Clash overlap (Å)
5:B:301[B]:X2A:H39	5:B:301[B]:X2A:H36	1.41	1.01
6:A:532:HOH:O	5:B:301[A]:X2A:H33	1.72	0.90
1:B:81:LYS:NZ	6:B:516:HOH:O	2.02	0.80
5:B:301[B]:X2A:H36	5:B:301[B]:X2A:C7	2.13	0.76
1:B:179[A]:LYS:HB3	1:B:179[A]:LYS:HZ2	1.52	0.75

There are no symmetry-related clashes.

## 5.3 Torsion angles

### 5.3.1 Protein backbone

In the following table, the Percentiles column shows the percent Ramachandran outliers of the chain as a percentile score with respect to all X-ray entries followed by that with respect to entries of similar resolution.

The Analysed column shows the number of residues for which the backbone conformation was analysed, and the total number of residues.

Mol	Chain	Analysed	Favoured	Allowed	Outliers	Percentiles	
1	A	251/245 (102%)	241 (96%)	10 (4%)	0	100	100
1	B	246/245 (100%)	241 (98%)	5 (2%)	0	100	100
All	All	497/490 (101%)	482 (97%)	15 (3%)	0	100	100

There are no Ramachandran outliers to report.

### 5.3.2 Protein sidechains

In the following table, the Percentiles column shows the percent sidechain outliers of the chain as a percentile score with respect to all X-ray entries followed by that with respect to entries of similar resolution.

The Analysed column shows the number of residues for which the sidechain conformation was analysed, and the total number of residues.

Mol	Chain	Analysed	Rotameric	Outliers	Percentiles	
1	A	218/210 (104%)	214 (98%)	4 (2%)	66	41
1	B	211/210 (100%)	209 (99%)	2 (1%)	84	70
All	All	429/420 (102%)	423 (99%)	6 (1%)	82	52

5 of 6 residues with a non-rotameric sidechain are listed below:

Mol	Chain	Res	Type
1	A	136[A]	HIS
1	B	179[B]	LYS
1	A	136[B]	HIS
1	A	98	GLN
1	B	179[A]	LYS

Some sidechains can be flipped to improve hydrogen bonding and reduce clashes. All (2) such sidechains are listed below:

Mol	Chain	Res	Type
1	A	112	GLN
1	B	98	GLN

### 5.3.3 RNA ⓘ

There are no RNA molecules in this entry.

## 5.4 Non-standard residues in protein, DNA, RNA chains ⓘ

There are no non-standard protein/DNA/RNA residues in this entry.

## 5.5 Carbohydrates ⓘ

There are no carbohydrates in this entry.

## 5.6 Ligand geometry ⓘ

12 ligands are modelled in this entry.

In the following table, the Counts columns list the number of bonds (or angles) for which Mogul statistics could be retrieved, the number of bonds (or angles) that are observed in the model and the number of bonds (or angles) that are defined in the chemical component dictionary. The Link column lists molecule types, if any, to which the group is linked. The Z score for a bond length (or angle) is the number of standard deviations the observed value is removed from the expected value. A bond length (or angle) with  $|Z| > 2$  is considered an outlier worth inspection. RMSZ is the root-mean-square of all Z scores of the bond lengths (or angles).

Mol	Type	Chain	Res	Link	Bond lengths			Bond angles		
					Counts	RMSZ	# $ Z  > 2$	Counts	RMSZ	# $ Z  > 2$
2	MES	A	301	-	11,12,12	1.21	1 (9%)	14,16,16	1.25	2 (14%)
3	SO4	A	302	-	4,4,4	0.81	0	6,6,6	0.82	0
4	PG4	A	303	-	12,12,12	0.73	0	11,11,11	0.74	0
5	X2A	B	301[A]	-	64,72,72	1.45	11 (17%)	74,108,108	1.69	14 (18%)
5	X2A	B	301[B]	-	64,72,72	1.95	14 (21%)	74,108,108	2.04	23 (31%)
5	X2A	B	301[C]	-	64,72,72	1.70	11 (17%)	74,108,108	1.87	16 (21%)
5	X2A	B	301[D]	-	64,72,72	1.50	10 (15%)	74,108,108	1.85	16 (21%)
2	MES	B	302	-	11,12,12	1.07	1 (9%)	14,16,16	1.92	3 (21%)
3	SO4	B	303	-	4,4,4	1.24	1 (25%)	6,6,6	0.44	0
3	SO4	B	304	-	4,4,4	0.71	0	6,6,6	0.51	0
3	SO4	B	305	-	4,4,4	1.55	1 (25%)	6,6,6	0.68	0

Mol	Type	Chain	Res	Link	Bond lengths			Bond angles		
					Counts	RMSZ	# Z  > 2	Counts	RMSZ	# Z  > 2
4	PG4	B	306	-	12,12,12	0.72	0	11,11,11	0.44	0

In the following table, the Chirals column lists the number of chiral outliers, the number of chiral centers analysed, the number of these observed in the model and the number defined in the chemical component dictionary. Similar counts are reported in the Torsion and Rings columns. '-' means no outliers of that kind were identified.

Mol	Type	Chain	Res	Link	Chirals	Torsions	Rings
2	MES	A	301	-	-	0/6/14/14	0/1/1/1
3	SO4	A	302	-	-	0/0/0/0	0/0/0/0
4	PG4	A	303	-	-	0/10/10/10	0/0/0/0
5	X2A	B	301[A]	-	-	0/42/114/114	0/9/9/9
5	X2A	B	301[B]	-	-	0/42/114/114	0/9/9/9
5	X2A	B	301[C]	-	2/2/12/14	0/42/114/114	0/9/9/9
5	X2A	B	301[D]	-	2/2/12/14	1/42/114/114	0/9/9/9
2	MES	B	302	-	-	0/6/14/14	0/1/1/1
3	SO4	B	303	-	-	0/0/0/0	0/0/0/0
3	SO4	B	304	-	-	0/0/0/0	0/0/0/0
3	SO4	B	305	-	-	0/0/0/0	0/0/0/0
4	PG4	B	306	-	-	0/10/10/10	0/0/0/0

The worst 5 of 50 bond length outliers are listed below:

Mol	Chain	Res	Type	Atoms	Z	Observed(Å)	Ideal(Å)
5	B	301[B]	X2A	C2-N	-6.63	1.29	1.41
5	B	301[B]	X2A	C24-N3	-6.40	1.29	1.41
5	B	301[C]	X2A	C2-N	-6.31	1.29	1.41
5	B	301[A]	X2A	C24-N3	-4.98	1.32	1.41
5	B	301[B]	X2A	O2-C21	-4.93	1.40	1.45

The worst 5 of 74 bond angle outliers are listed below:

Mol	Chain	Res	Type	Atoms	Z	Observed(°)	Ideal(°)
5	B	301[C]	X2A	O5-C-C1	-7.70	93.50	108.77
5	B	301[D]	X2A	O5-C-C1	-6.91	95.05	108.77
5	B	301[A]	X2A	O5-C-C1	-5.51	97.83	108.77
5	B	301[B]	X2A	C10-C9-N1	-4.03	105.23	111.07
5	B	301[B]	X2A	C32-C31-N4	-4.02	105.24	111.07

All (4) chirality outliers are listed below:

Mol	Chain	Res	Type	Atom
5	B	301[C]	X2A	C22
5	B	301[C]	X2A	C
5	B	301[D]	X2A	C22
5	B	301[D]	X2A	C

All (1) torsion outliers are listed below:

Mol	Chain	Res	Type	Atoms
5	B	301[D]	X2A	C-C1-N-C2

There are no ring outliers.

8 monomers are involved in 38 short contacts:

Mol	Chain	Res	Type	Clashes	Symm-Clashes
4	A	303	PG4	4	0
5	B	301[A]	X2A	10	0
5	B	301[B]	X2A	4	0
5	B	301[C]	X2A	12	0
5	B	301[D]	X2A	5	0
2	B	302	MES	1	0
3	B	305	SO4	1	0
4	B	306	PG4	2	0

## 5.7 Other polymers [i](#)

There are no such residues in this entry.

## 5.8 Polymer linkage issues [i](#)

There are no chain breaks in this entry.

## 6 Fit of model and data [i](#)

### 6.1 Protein, DNA and RNA chains [i](#)

In the following table, the column labelled ‘#RSRZ> 2’ contains the number (and percentage) of RSRZ outliers, followed by percent RSRZ outliers for the chain as percentile scores relative to all X-ray entries and entries of similar resolution. The OWAB column contains the minimum, median, 95<sup>th</sup> percentile and maximum values of the occupancy-weighted average B-factor per residue. The column labelled ‘Q< 0.9’ lists the number of (and percentage) of residues with an average occupancy less than 0.9.

Mol	Chain	Analysed	<RSRZ>	#RSRZ>2	OWAB(Å <sup>2</sup> )	Q<0.9
1	A	243/245 (99%)	-0.30	3 (1%) 81 82	14, 20, 34, 52	0
1	B	243/245 (99%)	-0.24	6 (2%) 61 59	15, 22, 38, 51	0
All	All	486/490 (99%)	-0.27	9 (1%) 70 70	14, 21, 37, 52	0

The worst 5 of 9 RSRZ outliers are listed below:

Mol	Chain	Res	Type	RSRZ
1	B	97	TYR	3.1
1	B	133	VAL	2.8
1	B	148	THR	2.6
1	B	233	ASN	2.6
1	A	97	TYR	2.3

### 6.2 Non-standard residues in protein, DNA, RNA chains [i](#)

There are no non-standard protein/DNA/RNA residues in this entry.

### 6.3 Carbohydrates [i](#)

There are no carbohydrates in this entry.

### 6.4 Ligands [i](#)

In the following table, the Atoms column lists the number of modelled atoms in the group and the number defined in the chemical component dictionary. LLDF column lists the quality of electron density of the group with respect to its neighbouring residues in protein, DNA or RNA chains. The B-factors column lists the minimum, median, 95<sup>th</sup> percentile and maximum values of B factors of atoms in the group. The column labelled ‘Q< 0.9’ lists the number of atoms with occupancy less than 0.9.



Mol	Type	Chain	Res	Atoms	RSCC	RSR	LLDF	B-factors( $\text{\AA}^2$ )	Q<0.9
5	X2A	B	301[A]	64/64	0.81	0.23	6.05	18,37,56,58	64
5	X2A	B	301[C]	64/64	0.81	0.23	5.99	18,36,55,60	64
5	X2A	B	301[D]	64/64	0.81	0.23	5.99	14,28,54,56	64
5	X2A	B	301[B]	64/64	0.81	0.23	5.99	23,40,56,64	64
2	MES	A	301	12/12	0.93	0.17	5.17	28,32,42,45	0
4	PG4	B	306	13/13	0.85	0.17	3.11	32,45,55,57	0
4	PG4	A	303	13/13	0.80	0.16	2.09	24,44,54,62	0
3	SO4	A	302	5/5	0.98	0.12	1.93	28,30,35,40	0
3	SO4	B	304	5/5	0.99	0.07	0.07	25,30,37,38	0
2	MES	B	302	12/12	0.98	0.06	-0.84	21,27,29,30	0
3	SO4	B	303	5/5	0.96	0.18	-	44,44,47,53	0
3	SO4	B	305	5/5	0.94	0.16	-	37,39,45,47	0

## 6.5 Other polymers

There are no such residues in this entry.