



Full wwPDB X-ray Structure Validation Report ⓘ

Jan 31, 2016 – 08:59 PM GMT

PDB ID : 1N23
Title : (+)-Bornyl diphosphate synthase: Complex with Mg, pyrophosphate, and (1R,4S)-2-azabornane
Authors : Whittington, D.A.; Wise, M.L.; Urbansky, M.; Coates, R.M.; Croteau, R.B.; Christianson, D.W.
Deposited on : 2002-10-21
Resolution : 2.40 Å(reported)

This is a Full wwPDB X-ray Structure Validation Report for a publicly released PDB entry.
We welcome your comments at validation@mail.wwpdb.org
A user guide is available at
<http://wwpdb.org/validation/2016/XrayValidationReportHelp>
with specific help available everywhere you see the ⓘ symbol.

The following versions of software and data (see [references ⓘ](#)) were used in the production of this report:

MolProbity : 4.02b-467
Mogul : 1.7 (RC4), CSD as536be (2015)
Xtriage (Phenix) : 1.9-1692
EDS : rb-20026688
Percentile statistics : 20151230.v01 (using entries in the PDB archive December 30th 2015)
Refmac : 5.8.0135
CCP4 : 6.5.0
Ideal geometry (proteins) : Engh & Huber (2001)
Ideal geometry (DNA, RNA) : Parkinson et al. (1996)
Validation Pipeline (wwPDB-VP) : trunk26865

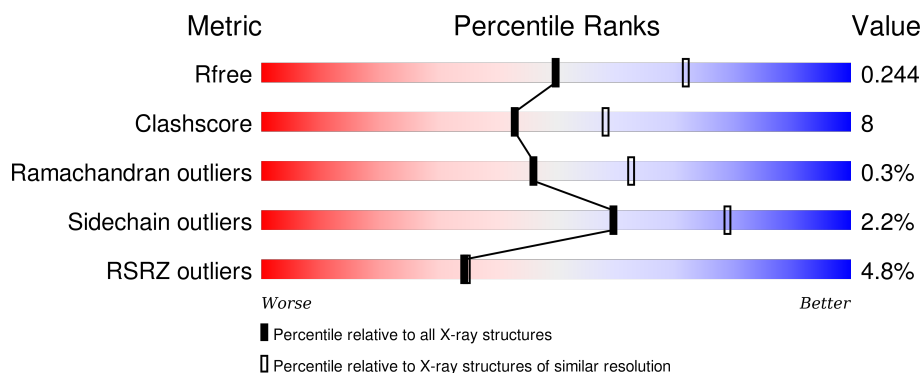
1 Overall quality at a glance

The following experimental techniques were used to determine the structure:

X-RAY DIFFRACTION

The reported resolution of this entry is 2.40 Å.

Percentile scores (ranging between 0-100) for global validation metrics of the entry are shown in the following graphic. The table shows the number of entries on which the scores are based.



Metric	Whole archive (#Entries)	Similar resolution (#Entries, resolution range(Å))
R_{free}	91344	2919 (2.40-2.40)
Clashscore	102246	3407 (2.40-2.40)
Ramachandran outliers	100387	3351 (2.40-2.40)
Sidechain outliers	100360	3352 (2.40-2.40)
RSRZ outliers	91569	2928 (2.40-2.40)

The table below summarises the geometric issues observed across the polymeric chains and their fit to the electron density. The red, orange, yellow and green segments on the lower bar indicate the fraction of residues that contain outliers for ≥ 3 , 2, 1 and 0 types of geometric quality criteria. A grey segment represents the fraction of residues that are not modelled. The numeric value for each fraction is indicated below the corresponding segment, with a dot representing fractions $\leq 5\%$. The upper red bar (where present) indicates the fraction of residues that have poor fit to the electron density. The numeric value is given above the bar.

Mol	Chain	Length	Quality of chain
1	A	549	<div> <div>5%</div> <div> <div></div> <div>79%</div> <div>17%</div> <div>••</div> </div> </div>
1	B	549	<div> <div>4%</div> <div> <div></div> <div>79%</div> <div>16%</div> <div>•</div> </div> </div>

2 Entry composition [i](#)

There are 5 unique types of molecules in this entry. The entry contains 9008 atoms, of which 0 are hydrogens and 0 are deuteriums.

In the tables below, the ZeroOcc column contains the number of atoms modelled with zero occupancy, the AltConf column contains the number of residues with at least one atom in alternate conformation and the Trace column contains the number of residues modelled with at most 2 atoms.

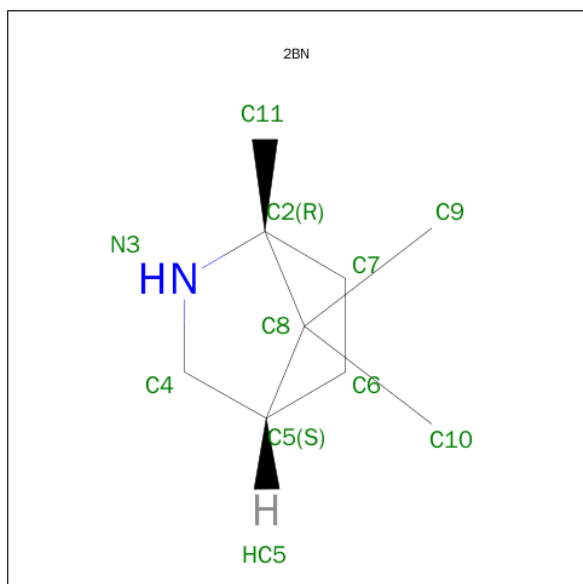
- Molecule 1 is a protein called (+)-bornyl diphosphate synthase.

Mol	Chain	Residues	Atoms					ZeroOcc	AltConf	Trace
1	A	533	Total	C	N	O	S	0	0	0
			4398	2852	728	800	18			
1	B	527	Total	C	N	O	S	0	0	0
			4344	2817	716	794	17			

- Molecule 2 is MAGNESIUM ION (three-letter code: MG) (formula: Mg).

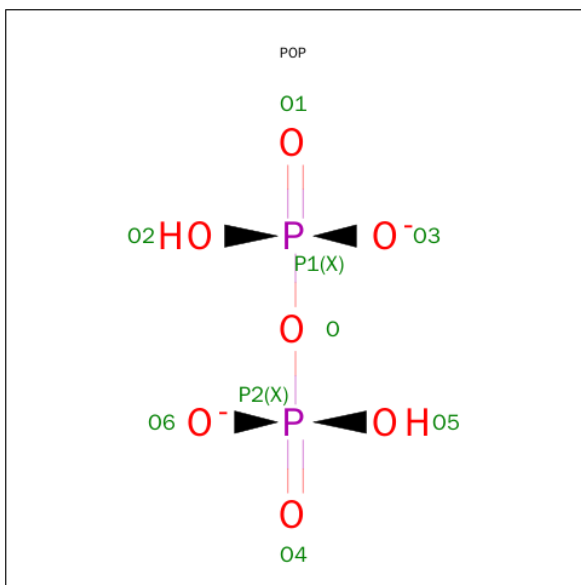
Mol	Chain	Residues	Atoms		ZeroOcc	AltConf
2	B	3	Total	Mg	0	0
			3	3		
2	A	3	Total	Mg	0	0
			3	3		

- Molecule 3 is (1R,4S)-2-AZABORNANE (three-letter code: 2BN) (formula: C₉H₁₇N).



Mol	Chain	Residues	Atoms	ZeroOcc	AltConf
3	A	1	Total C N 10 9 1	0	0
3	B	1	Total C N 10 9 1	0	0

- Molecule 4 is PYROPHOSPHATE 2- (three-letter code: POP) (formula: $\text{H}_2\text{O}_7\text{P}_2$).



Mol	Chain	Residues	Atoms	ZeroOcc	AltConf
4	A	1	Total O P 9 7 2	0	0
4	B	1	Total O P 9 7 2	0	0

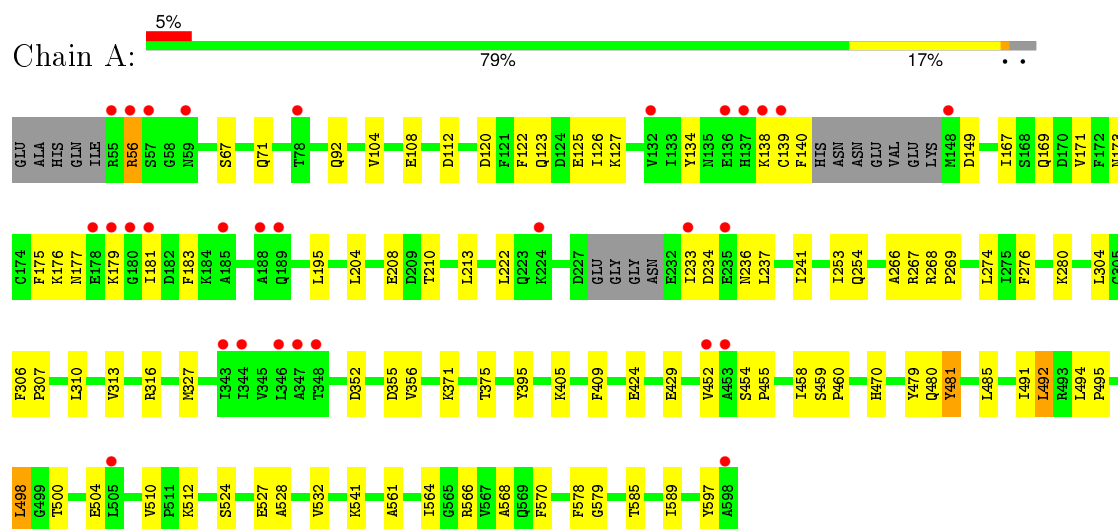
- Molecule 5 is water.

Mol	Chain	Residues	Atoms	ZeroOcc	AltConf
5	A	101	Total O 101 101	0	0
5	B	121	Total O 121 121	0	0

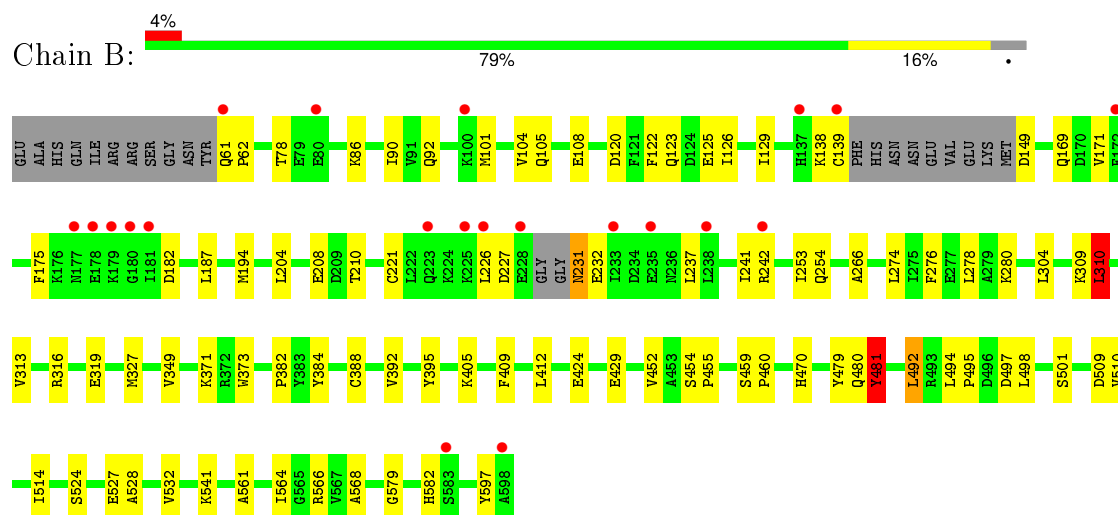
3 Residue-property plots [i](#)

These plots are drawn for all protein, RNA and DNA chains in the entry. The first graphic for a chain summarises the proportions of errors displayed in the second graphic. The second graphic shows the sequence view annotated by issues in geometry and electron density. Residues are color-coded according to the number of geometric quality criteria for which they contain at least one outlier: green = 0, yellow = 1, orange = 2 and red = 3 or more. A red dot above a residue indicates a poor fit to the electron density ($RSRZ > 2$). Stretches of 2 or more consecutive residues without any outlier are shown as a green connector. Residues present in the sample, but not in the model, are shown in grey.

- Molecule 1: (+)-bornyl diphosphate synthase



- Molecule 1: (+)-bornyl diphosphate synthase



4 Data and refinement statistics

Property	Value	Source
Space group	P 21 21 21	Depositor
Cell constants a, b, c, α , β , γ	100.99Å 118.18Å 120.07Å 90.00° 90.00° 90.00°	Depositor
Resolution (Å)	29.36 – 2.40 29.36 – 2.39	Depositor EDS
% Data completeness (in resolution range)	99.5 (29.36-2.40) 99.1 (29.36-2.39)	Depositor EDS
R_{merge}	(Not available)	Depositor
R_{sym}	0.05	Depositor
$\langle I/\sigma(I) \rangle$ ¹	5.06 (at 2.39Å)	Xtriage
Refinement program	CNS 1.0	Depositor
R, R_{free}	0.207 , 0.244 0.207 , 0.244	Depositor DCC
R_{free} test set	2864 reflections (5.07%)	DCC
Wilson B-factor (Å ²)	40.8	Xtriage
Anisotropy	0.024	Xtriage
Bulk solvent k_{sol} (e/Å ³), B_{sol} (Å ²)	0.33 , 43.5	EDS
Estimated twinning fraction	0.008 for -h,l,k	Xtriage
L-test for twinning ²	$\langle L \rangle = 0.50$, $\langle L^2 \rangle = 0.34$	Xtriage
Outliers	1 of 56874 reflections (0.002%)	Xtriage
F_o, F_c correlation	0.95	EDS
Total number of atoms	9008	wwPDB-VP
Average B, all atoms (Å ²)	48.0	wwPDB-VP

Xtriage's analysis on translational NCS is as follows: *The largest off-origin peak in the Patterson function is 3.91% of the height of the origin peak. No significant pseudotranslation is detected.*

¹Intensities estimated from amplitudes.

²Theoretical values of $\langle |L| \rangle$, $\langle L^2 \rangle$ for acentric reflections are 0.5, 0.375 respectively for untwinned datasets, and 0.333, 0.2 for perfectly twinned datasets.

5 Model quality

5.1 Standard geometry

Bond lengths and bond angles in the following residue types are not validated in this section: 2BN, MG, POP

The Z score for a bond length (or angle) is the number of standard deviations the observed value is removed from the expected value. A bond length (or angle) with $|Z| > 5$ is considered an outlier worth inspection. RMSZ is the root-mean-square of all Z scores of the bond lengths (or angles).

Mol	Chain	Bond lengths		Bond angles	
		RMSZ	# Z >5	RMSZ	# Z >5
1	A	0.36	0/4516	0.54	0/6119
1	B	0.37	0/4460	0.55	1/6046 (0.0%)
All	All	0.37	0/8976	0.54	1/12165 (0.0%)

Chiral center outliers are detected by calculating the chiral volume of a chiral center and verifying if the center is modelled as a planar moiety or with the opposite hand. A planarity outlier is detected by checking planarity of atoms in a peptide group, atoms in a mainchain group or atoms of a sidechain that are expected to be planar.

Mol	Chain	#Chirality outliers	#Planarity outliers
1	A	0	1
1	B	0	2
All	All	0	3

There are no bond length outliers.

All (1) bond angle outliers are listed below:

Mol	Chain	Res	Type	Atoms	Z	Observed($^{\circ}$)	Ideal($^{\circ}$)
1	B	310	LEU	CA-CB-CG	5.09	127.01	115.30

There are no chirality outliers.

All (3) planarity outliers are listed below:

Mol	Chain	Res	Type	Group
1	A	395	TYR	Sidechain
1	B	395	TYR	Sidechain
1	B	481	TYR	Sidechain

5.2 Too-close contacts ⓘ

In the following table, the Non-H and H(model) columns list the number of non-hydrogen atoms and hydrogen atoms in the chain respectively. The H(added) column lists the number of hydrogen atoms added and optimized by MolProbity. The Clashes column lists the number of clashes within the asymmetric unit, whereas Symm-Clashes lists symmetry related clashes.

Mol	Chain	Non-H	H(model)	H(added)	Clashes	Symm-Clashes
1	A	4398	0	4284	77	0
1	B	4344	0	4229	66	0
2	A	3	0	0	0	0
2	B	3	0	0	0	0
3	A	10	0	17	0	0
3	B	10	0	17	0	0
4	A	9	0	0	0	0
4	B	9	0	0	0	0
5	A	101	0	0	1	0
5	B	121	0	0	4	0
All	All	9008	0	8547	142	0

The all-atom clashscore is defined as the number of clashes found per 1000 atoms (including hydrogen atoms). The all-atom clashscore for this structure is 8.

All (142) close contacts within the same asymmetric unit are listed below, sorted by their clash magnitude.

Atom-1	Atom-2	Interatomic distance (Å)	Clash overlap (Å)
1:A:429:GLU:HB3	1:A:510:VAL:HG21	1.20	1.17
1:B:429:GLU:HB3	1:B:510:VAL:HG21	1.43	0.98
1:B:492:LEU:HD13	1:B:568:ALA:HB2	1.52	0.91
1:B:313:VAL:HG11	1:B:349:VAL:HG22	1.56	0.86
1:B:316:ARG:NH1	1:B:579:GLY:HA2	1.94	0.82
1:A:492:LEU:HD13	1:A:568:ALA:HB2	1.61	0.82
1:A:316:ARG:NH1	1:A:579:GLY:HA2	1.95	0.82
1:B:226:LEU:HD11	1:B:242:ARG:HE	1.44	0.82
1:A:316:ARG:HH12	1:A:579:GLY:HA2	1.44	0.81
1:B:266:ALA:HB2	1:B:276:PHE:CE1	2.16	0.80
1:B:316:ARG:HH12	1:B:579:GLY:HA2	1.49	0.77
1:B:429:GLU:HB3	1:B:510:VAL:CG2	2.19	0.73
1:A:56:ARG:HH21	1:A:56:ARG:HG2	1.52	0.73
1:A:355:ASP:OD1	1:A:356:VAL:HG23	1.92	0.70
1:A:429:GLU:HB3	1:A:510:VAL:CG2	2.13	0.69
1:A:409:PHE:HB2	1:A:470:HIS:CE1	2.29	0.67
1:B:494:LEU:HB2	1:B:495:PRO:HD3	1.76	0.66

Continued on next page...

Continued from previous page...

Atom-1	Atom-2	Interatomic distance (Å)	Clash overlap (Å)
1:A:494:LEU:HB2	1:A:495:PRO:HD3	1.77	0.65
1:B:409:PHE:HB2	1:B:470:HIS:CE1	2.33	0.64
1:A:104:VAL:O	1:A:108:GLU:HG3	1.97	0.64
1:A:429:GLU:CB	1:A:510:VAL:HG21	2.12	0.63
1:B:92:GLN:HB3	1:B:274:LEU:HD21	1.81	0.63
1:A:179:LYS:HD3	1:A:181:ILE:HD11	1.81	0.63
1:B:104:VAL:O	1:B:108:GLU:HG3	2.00	0.62
1:A:452:VAL:HG22	1:A:492:LEU:HG	1.82	0.62
1:B:452:VAL:HG22	1:B:492:LEU:HG	1.81	0.61
1:A:452:VAL:CG2	1:A:492:LEU:HG	2.30	0.61
1:B:309:LYS:C	1:B:310:LEU:HD23	2.22	0.60
1:B:313:VAL:CG1	1:B:349:VAL:HG22	2.32	0.59
1:B:492:LEU:HD13	1:B:568:ALA:CB	2.30	0.58
1:B:524:SER:OG	1:B:527:GLU:HG3	2.04	0.58
1:B:92:GLN:CB	1:B:274:LEU:HD21	2.33	0.58
1:A:176:LYS:HA	1:A:183:PHE:HA	1.85	0.58
1:B:169:GLN:OE1	1:B:210:THR:HB	2.04	0.57
1:A:504:GLU:OE1	1:A:512:LYS:HE3	2.03	0.57
1:A:169:GLN:OE1	1:A:210:THR:HB	2.05	0.57
1:B:120:ASP:HA	1:B:123:GLN:HE21	1.70	0.57
1:A:524:SER:OG	1:A:527:GLU:HG3	2.04	0.57
1:A:179:LYS:HD3	1:A:181:ILE:CD1	2.35	0.57
1:A:479:TYR:C	1:A:481:TYR:N	2.58	0.56
1:A:500:THR:O	1:A:504:GLU:HG3	2.06	0.56
1:B:276:PHE:CZ	1:B:280:LYS:HD2	2.40	0.56
1:B:514:ILE:HB	5:B:1005:HOH:O	2.06	0.56
1:B:452:VAL:CG2	1:B:492:LEU:HG	2.35	0.56
1:A:236:ASN:OD1	1:A:267:ARG:HD2	2.05	0.55
1:A:120:ASP:HA	1:A:123:GLN:HE21	1.71	0.55
1:A:480:GLN:O	1:A:481:TYR:HB2	2.06	0.55
1:B:101:MET:HG2	1:B:105:GLN:HB2	1.88	0.55
1:B:310:LEU:HD22	1:B:384:TYR:HB2	1.88	0.54
1:A:181:ILE:O	1:A:213:LEU:HD21	2.08	0.54
1:B:528:ALA:O	1:B:532:VAL:HG23	2.06	0.54
1:A:276:PHE:CZ	1:A:280:LYS:HD2	2.42	0.54
1:A:280:LYS:HG2	1:A:597:TYR:CD2	2.43	0.54
1:A:585:THR:HG22	1:A:589:ILE:HG13	1.89	0.54
1:B:479:TYR:C	1:B:481:TYR:N	2.51	0.54
1:B:382:PRO:HD3	5:B:909:HOH:O	2.08	0.53
1:A:56:ARG:NH2	1:A:56:ARG:HG2	2.22	0.53
1:B:479:TYR:C	1:B:481:TYR:H	2.05	0.53

Continued on next page...

Continued from previous page...

Atom-1	Atom-2	Interatomic distance (Å)	Clash overlap (Å)
1:B:231:ASN:CG	1:B:232:GLU:H	2.11	0.53
1:A:139:CYS:O	1:A:171:VAL:HG13	2.09	0.53
1:B:373:TRP:HB2	5:B:926:HOH:O	2.10	0.52
1:A:454:SER:HB2	1:A:455:PRO:HD3	1.91	0.52
1:A:528:ALA:O	1:A:532:VAL:HG23	2.10	0.52
1:B:122:PHE:O	1:B:126:ILE:HG13	2.11	0.51
1:B:253:ILE:HD11	1:B:566:ARG:HB2	1.91	0.51
1:B:280:LYS:HG2	1:B:597:TYR:CD2	2.46	0.51
1:B:237:LEU:O	1:B:241:ILE:HG13	2.11	0.51
1:B:492:LEU:HD12	1:B:492:LEU:O	2.10	0.50
1:A:253:ILE:HD11	1:A:566:ARG:HB2	1.92	0.50
1:A:122:PHE:O	1:A:126:ILE:HG13	2.11	0.50
1:B:194:MET:HG3	1:B:221:CYS:SG	2.50	0.50
1:B:497:ASP:O	1:B:501:SER:HB3	2.12	0.50
1:A:237:LEU:O	1:A:241:ILE:HG13	2.12	0.50
1:A:375:THR:HB	1:B:412:LEU:HD23	1.94	0.49
1:B:86:LYS:O	1:B:90:ILE:HG12	2.12	0.49
1:A:316:ARG:HH12	1:A:579:GLY:CA	2.20	0.49
1:A:92:GLN:HB3	1:A:274:LEU:HD13	1.94	0.49
1:A:280:LYS:HE3	1:A:597:TYR:HD2	1.78	0.48
1:A:266:ALA:HB2	1:A:276:PHE:CE1	2.49	0.48
1:A:204:LEU:HG	1:A:541:LYS:HG3	1.95	0.48
1:A:492:LEU:HD12	1:A:492:LEU:O	2.14	0.47
1:A:429:GLU:O	1:A:510:VAL:HG22	2.14	0.47
1:A:459:SER:OG	1:A:460:PRO:HD3	2.15	0.47
1:B:454:SER:HB2	1:B:455:PRO:HD3	1.96	0.46
1:A:112:ASP:CG	1:A:268:ARG:HH12	2.18	0.46
1:A:492:LEU:HD13	1:A:568:ALA:CB	2.40	0.46
1:A:561:ALA:O	1:A:564:ILE:HG22	2.16	0.46
1:A:179:LYS:CE	1:A:181:ILE:HD11	2.46	0.46
1:A:316:ARG:NH1	1:A:578:PHE:O	2.49	0.46
1:A:491:ILE:O	1:A:495:PRO:CD	2.64	0.45
1:B:480:GLN:O	1:B:481:TYR:HB2	2.16	0.45
1:A:195:LEU:HA	1:A:222:LEU:HD11	1.99	0.45
1:A:125:GLU:OE1	1:A:125:GLU:N	2.48	0.45
1:B:319:GLU:OE2	1:B:582:HIS:HD2	1.99	0.45
1:B:561:ALA:O	1:B:564:ILE:HG22	2.16	0.45
1:B:204:LEU:HG	1:B:541:LYS:HG3	1.97	0.45
1:B:175:PHE:HB3	1:B:187:LEU:HD11	1.98	0.45
1:B:61:GLN:HA	1:B:62:PRO:HD3	1.80	0.45
1:A:498:LEU:HD13	1:A:532:VAL:HG11	2.00	0.44

Continued on next page...

Continued from previous page...

Atom-1	Atom-2	Interatomic distance (Å)	Clash overlap (Å)
1:B:138:LYS:HG3	1:B:139:CYS:H	1.81	0.44
1:A:371:LYS:HD3	1:A:424:GLU:OE2	2.17	0.44
1:B:226:LEU:HD21	1:B:242:ARG:HG2	1.99	0.44
1:B:231:ASN:ND2	1:B:232:GLU:N	2.66	0.44
1:A:112:ASP:OD1	1:A:268:ARG:NH1	2.44	0.44
1:A:481:TYR:HA	1:A:481:TYR:HD2	1.60	0.44
1:A:134:TYR:CE1	1:A:167:ILE:HD11	2.53	0.44
1:B:125:GLU:OE1	1:B:125:GLU:N	2.48	0.44
1:B:409:PHE:CB	1:B:470:HIS:CE1	3.00	0.43
1:B:125:GLU:O	1:B:129:ILE:HG13	2.18	0.43
1:A:171:VAL:O	1:A:171:VAL:HG12	2.19	0.43
1:B:316:ARG:HH12	1:B:579:GLY:CA	2.25	0.43
1:B:481:TYR:HB2	5:B:979:HOH:O	2.19	0.43
1:A:409:PHE:HB2	1:A:470:HIS:HE1	1.82	0.43
1:B:171:VAL:HG12	1:B:171:VAL:O	2.19	0.43
1:A:134:TYR:CE1	1:A:167:ILE:CD1	3.02	0.43
1:A:233:ILE:HG22	1:A:234:ASP:N	2.34	0.42
1:B:459:SER:OG	1:B:460:PRO:HD3	2.19	0.42
1:A:452:VAL:HG21	1:A:492:LEU:HG	2.02	0.42
1:A:169:GLN:NE2	1:A:208:GLU:HA	2.34	0.42
1:A:123:GLN:O	1:A:127:LYS:HG3	2.19	0.42
1:A:179:LYS:CD	1:A:181:ILE:HD11	2.48	0.42
1:A:173:ASN:C	1:A:175:PHE:H	2.22	0.42
1:B:509:ASP:OD1	1:B:510:VAL:HG23	2.20	0.42
1:B:90:ILE:HD13	1:B:278:LEU:HD21	2.02	0.42
1:B:169:GLN:NE2	1:B:208:GLU:HA	2.35	0.42
1:B:388:CYS:O	1:B:392:VAL:HG23	2.20	0.42
1:B:371:LYS:HD3	1:B:424:GLU:OE2	2.19	0.41
1:B:226:LEU:HD11	1:B:242:ARG:NE	2.24	0.41
1:B:138:LYS:HG3	1:B:139:CYS:N	2.35	0.41
1:A:169:GLN:HE22	1:A:208:GLU:HA	1.85	0.41
1:A:352:ASP:O	1:A:356:VAL:HB	2.20	0.41
1:B:409:PHE:CG	1:B:470:HIS:ND1	2.86	0.41
1:B:231:ASN:ND2	1:B:232:GLU:H	2.19	0.41
1:A:268:ARG:HA	1:A:269:PRO:HD3	1.88	0.41
1:A:138:LYS:C	1:A:140:PHE:H	2.23	0.41
1:A:306:PHE:N	1:A:307:PRO:CD	2.84	0.41
1:A:458:ILE:HG21	1:A:485:LEU:HD22	2.02	0.41
1:A:67:SER:O	1:A:71:GLN:HG3	2.21	0.41
1:A:134:TYR:HE1	1:A:167:ILE:CD1	2.34	0.41
1:A:570:PHE:HB2	5:A:946:HOH:O	2.20	0.40

Continued on next page...

Continued from previous page...

Atom-1	Atom-2	Interatomic distance (Å)	Clash overlap (Å)
1:A:310:LEU:O	1:A:313:VAL:HG22	2.22	0.40
1:A:280:LYS:HE3	1:A:597:TYR:CD2	2.57	0.40

There are no symmetry-related clashes.

5.3 Torsion angles [i](#)

5.3.1 Protein backbone [i](#)

In the following table, the Percentiles column shows the percent Ramachandran outliers of the chain as a percentile score with respect to all X-ray entries followed by that with respect to entries of similar resolution.

The Analysed column shows the number of residues for which the backbone conformation was analysed, and the total number of residues.

Mol	Chain	Analysed	Favoured	Allowed	Outliers	Percentiles	
1	A	527/549 (96%)	503 (95%)	22 (4%)	2 (0%)	39	56
1	B	521/549 (95%)	501 (96%)	19 (4%)	1 (0%)	52	69
All	All	1048/1098 (95%)	1004 (96%)	41 (4%)	3 (0%)	46	63

All (3) Ramachandran outliers are listed below:

Mol	Chain	Res	Type
1	A	481	TYR
1	A	177	ASN
1	B	481	TYR

5.3.2 Protein sidechains [i](#)

In the following table, the Percentiles column shows the percent sidechain outliers of the chain as a percentile score with respect to all X-ray entries followed by that with respect to entries of similar resolution.

The Analysed column shows the number of residues for which the sidechain conformation was analysed, and the total number of residues.

Mol	Chain	Analysed	Rotameric	Outliers	Percentiles	
1	A	467/480 (97%)	459 (98%)	8 (2%)	68	85

Continued on next page...

Continued from previous page...

Mol	Chain	Analysed	Rotameric	Outliers	Percentiles	
1	B	462/480 (96%)	450 (97%)	12 (3%)	54	74
All	All	929/960 (97%)	909 (98%)	20 (2%)	60	79

All (20) residues with a non-rotameric sidechain are listed below:

Mol	Chain	Res	Type
1	A	56	ARG
1	A	149	ASP
1	A	254	GLN
1	A	304	LEU
1	A	327	MET
1	A	405	LYS
1	A	492	LEU
1	A	498	LEU
1	B	78	THR
1	B	149	ASP
1	B	182	ASP
1	B	227	ASP
1	B	231	ASN
1	B	254	GLN
1	B	304	LEU
1	B	310	LEU
1	B	327	MET
1	B	405	LYS
1	B	492	LEU
1	B	498	LEU

Some sidechains can be flipped to improve hydrogen bonding and reduce clashes. All (11) such sidechains are listed below:

Mol	Chain	Res	Type
1	A	123	GLN
1	A	173	ASN
1	A	254	GLN
1	A	434	HIS
1	A	531	HIS
1	B	123	GLN
1	B	173	ASN
1	B	231	ASN
1	B	254	GLN
1	B	434	HIS
1	B	531	HIS

5.3.3 RNA ⓘ

There are no RNA molecules in this entry.

5.4 Non-standard residues in protein, DNA, RNA chains ⓘ

There are no non-standard protein/DNA/RNA residues in this entry.

5.5 Carbohydrates ⓘ

There are no carbohydrates in this entry.

5.6 Ligand geometry ⓘ

Of 10 ligands modelled in this entry, 6 are monoatomic - leaving 4 for Mogul analysis.

In the following table, the Counts columns list the number of bonds (or angles) for which Mogul statistics could be retrieved, the number of bonds (or angles) that are observed in the model and the number of bonds (or angles) that are defined in the chemical component dictionary. The Link column lists molecule types, if any, to which the group is linked. The Z score for a bond length (or angle) is the number of standard deviations the observed value is removed from the expected value. A bond length (or angle) with $|Z| > 2$ is considered an outlier worth inspection. RMSZ is the root-mean-square of all Z scores of the bond lengths (or angles).

Mol	Type	Chain	Res	Link	Bond lengths			Bond angles		
					Counts	RMSZ	$\# Z > 2$	Counts	RMSZ	$\# Z > 2$
3	2BN	A	801	-	8,11,11	1.68	1 (12%)	12,19,19	1.46	3 (25%)
4	POP	A	901	2	8,8,8	1.64	2 (25%)	13,13,13	0.83	0
3	2BN	B	802	-	8,11,11	1.56	1 (12%)	12,19,19	1.38	1 (8%)
4	POP	B	902	2	8,8,8	1.59	2 (25%)	13,13,13	0.90	0

In the following table, the Chirals column lists the number of chiral outliers, the number of chiral centers analysed, the number of these observed in the model and the number defined in the chemical component dictionary. Similar counts are reported in the Torsion and Rings columns. '-' means no outliers of that kind were identified.

Mol	Type	Chain	Res	Link	Chirals	Torsions	Rings
3	2BN	A	801	-	-	0/0/27/27	0/0/2/2
4	POP	A	901	2	-	0/6/6/6	0/0/0/0
3	2BN	B	802	-	-	0/0/27/27	0/0/2/2
4	POP	B	902	2	-	0/6/6/6	0/0/0/0

All (6) bond length outliers are listed below:

Mol	Chain	Res	Type	Atoms	Z	Observed(Å)	Ideal(Å)
3	A	801	2BN	C4-N3	-4.31	1.35	1.47
3	B	802	2BN	C4-N3	-4.09	1.35	1.47
4	A	901	POP	P1-O1	2.80	1.59	1.50
4	B	902	POP	P1-O1	2.91	1.59	1.50
4	B	902	POP	P2-O4	2.99	1.59	1.50
4	A	901	POP	P2-O4	3.28	1.60	1.50

All (4) bond angle outliers are listed below:

Mol	Chain	Res	Type	Atoms	Z	Observed(°)	Ideal(°)
3	B	802	2BN	C6-C7-C2	-2.91	100.33	105.03
3	A	801	2BN	C6-C7-C2	-2.80	100.52	105.03
3	A	801	2BN	C6-C5-C4	-2.42	103.72	107.50
3	A	801	2BN	C8-C2-N3	2.06	104.27	100.84

There are no chirality outliers.

There are no torsion outliers.

There are no ring outliers.

No monomer is involved in short contacts.

5.7 Other polymers [i](#)

There are no such residues in this entry.

5.8 Polymer linkage issues [i](#)

There are no chain breaks in this entry.

6 Fit of model and data ⓘ

6.1 Protein, DNA and RNA chains ⓘ

In the following table, the column labelled ‘#RSRZ> 2’ contains the number (and percentage) of RSRZ outliers, followed by percent RSRZ outliers for the chain as percentile scores relative to all X-ray entries and entries of similar resolution. The OWAB column contains the minimum, median, 95th percentile and maximum values of the occupancy-weighted average B-factor per residue. The column labelled ‘Q< 0.9’ lists the number of (and percentage) of residues with an average occupancy less than 0.9.

Mol	Chain	Analysed	<RSRZ>	#RSRZ>2	OWAB(Å ²)	Q<0.9
1	A	533/549 (97%)	0.09	30 (5%) 28 28	25, 44, 84, 101	0
1	B	527/549 (95%)	-0.05	21 (3%) 42 43	21, 43, 85, 118	0
All	All	1060/1098 (96%)	0.02	51 (4%) 34 35	21, 44, 85, 118	0

All (51) RSRZ outliers are listed below:

Mol	Chain	Res	Type	RSRZ
1	B	137	HIS	5.4
1	A	137	HIS	4.8
1	B	180	GLY	4.7
1	A	233	ILE	4.6
1	B	233	ILE	4.5
1	B	139	CYS	4.2
1	A	57	SER	4.2
1	A	56	ARG	3.9
1	B	178	GLU	3.8
1	A	181	ILE	3.6
1	A	139	CYS	3.6
1	A	59	ASN	3.4
1	A	178	GLU	3.4
1	B	228	GLU	3.4
1	B	235	GLU	3.4
1	A	235	GLU	3.4
1	B	238	LEU	3.3
1	B	226	LEU	3.3
1	A	179	LYS	3.3
1	B	179	LYS	3.1
1	A	138	LYS	3.1
1	B	100	LYS	2.9
1	A	180	GLY	2.8
1	A	148	MET	2.8

Continued on next page...

Continued from previous page...

Mol	Chain	Res	Type	RSRZ
1	B	225	LYS	2.7
1	A	453	ALA	2.6
1	A	185	ALA	2.6
1	A	188	ALA	2.6
1	A	132	VAL	2.6
1	B	172	PHE	2.6
1	A	344	ILE	2.5
1	A	343	ILE	2.5
1	A	189	GLN	2.4
1	A	136	GLU	2.4
1	A	452	VAL	2.4
1	A	224	LYS	2.4
1	B	242	ARG	2.4
1	B	181	ILE	2.4
1	B	177	ASN	2.3
1	B	80	GLU	2.3
1	A	55	ARG	2.3
1	A	348	THR	2.3
1	B	598	ALA	2.2
1	B	583	SER	2.2
1	A	78	THR	2.2
1	B	223	GLN	2.1
1	A	347	ALA	2.1
1	A	346	LEU	2.1
1	A	598	ALA	2.1
1	A	505	LEU	2.1
1	B	61	GLN	2.0

6.2 Non-standard residues in protein, DNA, RNA chains [i](#)

There are no non-standard protein/DNA/RNA residues in this entry.

6.3 Carbohydrates [i](#)

There are no carbohydrates in this entry.

6.4 Ligands [i](#)

In the following table, the Atoms column lists the number of modelled atoms in the group and the number defined in the chemical component dictionary. LLDF column lists the quality of electron density of the group with respect to its neighbouring residues in protein, DNA or RNA chains.

The B-factors column lists the minimum, median, 95th percentile and maximum values of B factors of atoms in the group. The column labelled 'Q< 0.9' lists the number of atoms with occupancy less than 0.9.

Mol	Type	Chain	Res	Atoms	RSCC	RSR	LLDF	B-factors(Å ²)	Q<0.9
3	2BN	B	802	10/10	0.98	0.25	1.69	25,29,30,31	0
3	2BN	A	801	10/10	0.98	0.32	1.39	31,34,35,35	0
2	MG	A	703	1/1	0.96	0.14	-0.04	31,31,31,31	0
4	POP	A	901	9/9	0.99	0.17	-0.07	27,33,37,39	0
4	POP	B	902	9/9	0.99	0.14	-0.11	27,30,33,33	0
2	MG	A	701	1/1	0.98	0.15	-0.48	39,39,39,39	0
2	MG	A	702	1/1	0.99	0.11	-1.07	28,28,28,28	0
2	MG	B	705	1/1	0.97	0.10	-1.63	31,31,31,31	0
2	MG	B	706	1/1	0.99	0.10	-1.88	29,29,29,29	0
2	MG	B	704	1/1	0.95	0.08	-2.49	28,28,28,28	0

6.5 Other polymers [i](#)

There are no such residues in this entry.