



# Full wwPDB X-ray Structure Validation Report ⓘ

Feb 1, 2016 – 10:50 AM GMT

PDB ID : 3N3Z  
Title : Crystal structure of PDE9A (E406A) mutant in complex with IBMX  
Authors : Hou, J.; Luo, H.-B.; Chen, Y.; Xu, J.; Zhao, R.; Zou, L.  
Deposited on : 2010-05-21  
Resolution : 2.75 Å(reported)

This is a Full wwPDB X-ray Structure Validation Report for a publicly released PDB entry.  
We welcome your comments at [validation@mail.wwpdb.org](mailto:validation@mail.wwpdb.org)  
A user guide is available at  
<http://wwpdb.org/validation/2016/XrayValidationReportHelp>  
with specific help available everywhere you see the ⓘ symbol.

---

The following versions of software and data (see [references ⓘ](#)) were used in the production of this report:

MolProbity : 4.02b-467  
Mogul : 1.7 (RC4), CSD as536be (2015)  
Xtriage (Phenix) : 1.9-1692  
EDS : rb-20026688  
Percentile statistics : 20151230.v01 (using entries in the PDB archive December 30th 2015)  
Refmac : 5.8.0135  
CCP4 : 6.5.0  
Ideal geometry (proteins) : Engh & Huber (2001)  
Ideal geometry (DNA, RNA) : Parkinson et al. (1996)  
Validation Pipeline (wwPDB-VP) : trunk26865

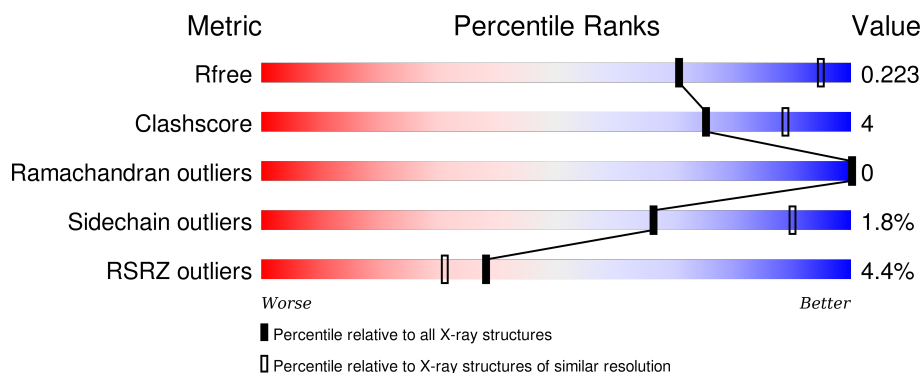
# 1 Overall quality at a glance

The following experimental techniques were used to determine the structure:

## *X-RAY DIFFRACTION*

The reported resolution of this entry is 2.75 Å.

Percentile scores (ranging between 0-100) for global validation metrics of the entry are shown in the following graphic. The table shows the number of entries on which the scores are based.



Metric	Whole archive (#Entries)	Similar resolution (#Entries, resolution range(Å))
$R_{free}$	91344	3340 (2.80-2.72)
Clashscore	102246	3829 (2.80-2.72)
Ramachandran outliers	100387	3767 (2.80-2.72)
Sidechain outliers	100360	3770 (2.80-2.72)
RSRZ outliers	91569	3352 (2.80-2.72)

The table below summarises the geometric issues observed across the polymeric chains and their fit to the electron density. The red, orange, yellow and green segments on the lower bar indicate the fraction of residues that contain outliers for  $\geq 3$ , 2, 1 and 0 types of geometric quality criteria. A grey segment represents the fraction of residues that are not modelled. The numeric value for each fraction is indicated below the corresponding segment, with a dot representing fractions  $\leq 5\%$ . The upper red bar (where present) indicates the fraction of residues that have poor fit to the electron density. The numeric value is given above the bar.

Mol	Chain	Length	Quality of chain
1	A	326	<div> <div>3%</div> <div>91%</div> <div>9%</div> </div>
1	B	326	<div> <div>6%</div> <div>92%</div> <div>7%</div> </div>

## 2 Entry composition [i](#)

There are 6 unique types of molecules in this entry. The entry contains 5523 atoms, of which 0 are hydrogens and 0 are deuteriums.

In the tables below, the ZeroOcc column contains the number of atoms modelled with zero occupancy, the AltConf column contains the number of residues with at least one atom in alternate conformation and the Trace column contains the number of residues modelled with at most 2 atoms.

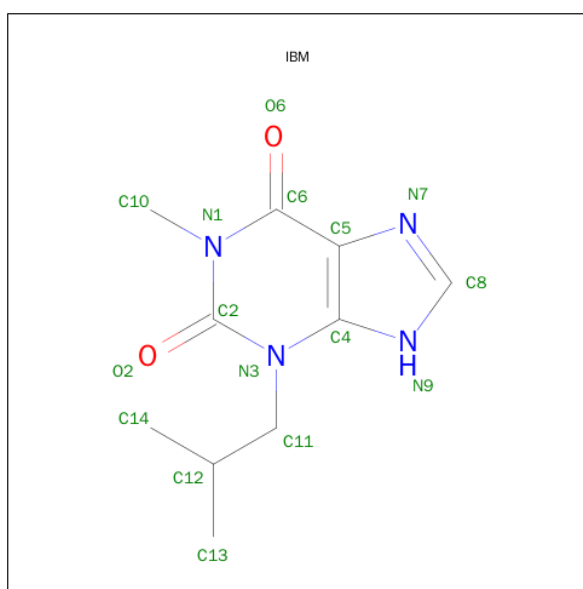
- Molecule 1 is a protein called High affinity cGMP-specific 3',5'-cyclic phosphodiesterase 9A.

Mol	Chain	Residues	Atoms					ZeroOcc	AltConf	Trace
1	A	326	Total	C	N	O	S	0	0	0
			2691	1725	446	490	30			
1	B	326	Total	C	N	O	S	0	0	0
			2691	1725	446	490	30			

There are 2 discrepancies between the modelled and reference sequences:

Chain	Residue	Modelled	Actual	Comment	Reference
A	406	ALA	GLU	ENGINEERED MUTATION	UNP O76083
B	406	ALA	GLU	ENGINEERED MUTATION	UNP O76083

- Molecule 2 is 3-ISOBUTYL-1-METHYLNANTHINE (three-letter code: IBM) (formula:  $C_{10}H_{14}N_4O_2$ ).



Mol	Chain	Residues	Atoms				ZeroOcc	AltConf
2	A	1	Total	C	N	O	0	0
			16	10	4	2		

*Continued on next page...*

*Continued from previous page...*

Mol	Chain	Residues	Atoms				ZeroOcc	AltConf
2	B	1	Total	C	N	O	0	0
			16	10	4	2		

- Molecule 3 is ZINC ION (three-letter code: ZN) (formula: Zn).

Mol	Chain	Residues	Atoms		ZeroOcc	AltConf
3	B	1	Total	Zn	0	0
			1	1		
3	A	1	Total	Zn	0	0
			1	1		

- Molecule 4 is MAGNESIUM ION (three-letter code: MG) (formula: Mg).

Mol	Chain	Residues	Atoms		ZeroOcc	AltConf
4	B	1	Total	Mg	0	0
			1	1		
4	A	1	Total	Mg	0	0
			1	1		

- Molecule 5 is CHLORIDE ION (three-letter code: CL) (formula: Cl).

Mol	Chain	Residues	Atoms		ZeroOcc	AltConf
5	B	1	Total	Cl	0	0
			1	1		

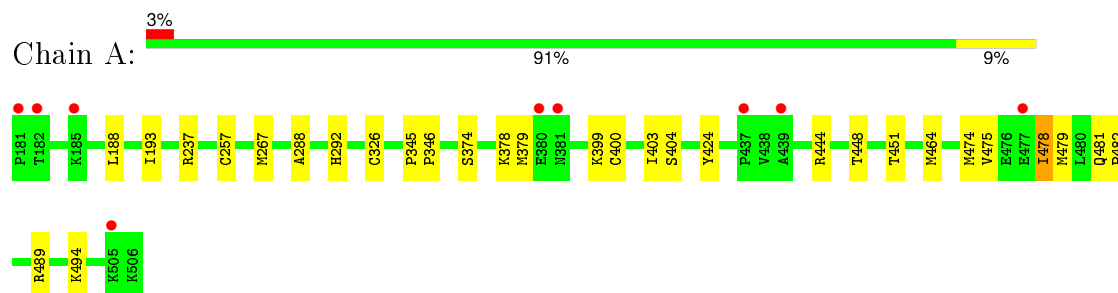
- Molecule 6 is water.

Mol	Chain	Residues	Atoms		ZeroOcc	AltConf
6	A	56	Total	O	0	0
			56	56		
6	B	48	Total	O	0	0
			48	48		

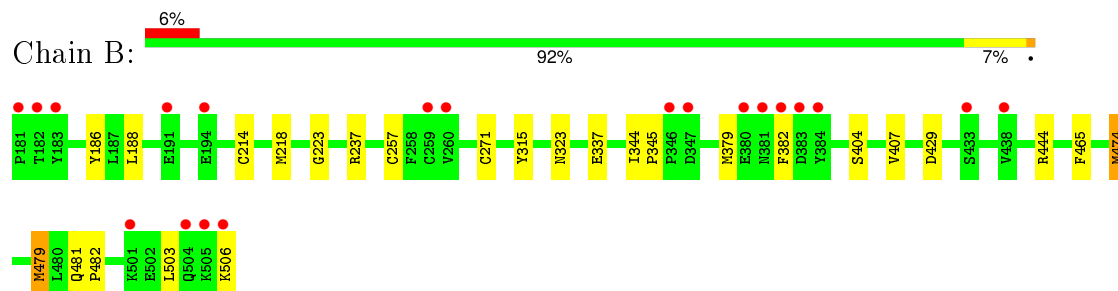
### 3 Residue-property plots [i](#)

These plots are drawn for all protein, RNA and DNA chains in the entry. The first graphic for a chain summarises the proportions of errors displayed in the second graphic. The second graphic shows the sequence view annotated by issues in geometry and electron density. Residues are color-coded according to the number of geometric quality criteria for which they contain at least one outlier: green = 0, yellow = 1, orange = 2 and red = 3 or more. A red dot above a residue indicates a poor fit to the electron density ( $RSRZ > 2$ ). Stretches of 2 or more consecutive residues without any outlier are shown as a green connector. Residues present in the sample, but not in the model, are shown in grey.

- Molecule 1: High affinity cGMP-specific 3',5'-cyclic phosphodiesterase 9A



- Molecule 1: High affinity cGMP-specific 3',5'-cyclic phosphodiesterase 9A



## 4 Data and refinement statistics

Property	Value	Source
Space group	P 41 21 2	Depositor
Cell constants a, b, c, $\alpha$ , $\beta$ , $\gamma$	104.09 Å   104.09 Å   270.21 Å 90.00°   90.00°   90.00°	Depositor
Resolution (Å)	38.33 – 2.75 38.33 – 2.75	Depositor EDS
% Data completeness (in resolution range)	92.3 (38.33-2.75) 92.3 (38.33-2.75)	Depositor EDS
$R_{merge}$	0.12	Depositor
$R_{sym}$	(Not available)	Depositor
$\langle I/\sigma(I) \rangle$ <sup>1</sup>	4.01 (at 2.77 Å)	Xtriage
Refinement program	REFMAC 5.5.0109	Depositor
R, $R_{free}$	0.201   ,   0.230 0.197   ,   0.223	Depositor DCC
$R_{free}$ test set	1824 reflections (5.26%)	DCC
Wilson B-factor (Å <sup>2</sup> )	47.5	Xtriage
Anisotropy	0.102	Xtriage
Bulk solvent $k_{sol}$ (e/Å <sup>3</sup> ), $B_{sol}$ (Å <sup>2</sup> )	0.38 , 40.3	EDS
Estimated twinning fraction	No twinning to report.	Xtriage
L-test for twinning <sup>2</sup>	$\langle  L  \rangle = 0.50$ , $\langle L^2 \rangle = 0.34$	Xtriage
Outliers	0 of 36516 reflections	Xtriage
$F_o, F_c$ correlation	0.94	EDS
Total number of atoms	5523	wwPDB-VP
Average B, all atoms (Å <sup>2</sup> )	45.0	wwPDB-VP

Xtriage's analysis on translational NCS is as follows: *The largest off-origin peak in the Patterson function is 6.94% of the height of the origin peak. No significant pseudotranslation is detected.*

<sup>1</sup>Intensities estimated from amplitudes.

<sup>2</sup>Theoretical values of  $\langle |L| \rangle$ ,  $\langle L^2 \rangle$  for acentric reflections are 0.5, 0.375 respectively for untwinned datasets, and 0.333, 0.2 for perfectly twinned datasets.

## 5 Model quality [i](#)

### 5.1 Standard geometry [i](#)

Bond lengths and bond angles in the following residue types are not validated in this section: MG, CL, ZN, IBM

The Z score for a bond length (or angle) is the number of standard deviations the observed value is removed from the expected value. A bond length (or angle) with  $|Z| > 5$  is considered an outlier worth inspection. RMSZ is the root-mean-square of all Z scores of the bond lengths (or angles).

Mol	Chain	Bond lengths		Bond angles	
		RMSZ	$\# Z  > 5$	RMSZ	$\# Z  > 5$
1	A	0.52	1/2761 (0.0%)	0.57	0/3738
1	B	0.48	0/2761	0.56	0/3738
All	All	0.50	1/5522 (0.0%)	0.57	0/7476

All (1) bond length outliers are listed below:

Mol	Chain	Res	Type	Atoms	Z	Observed(Å)	Ideal(Å)
1	A	326	CYS	CB-SG	-5.26	1.73	1.81

There are no bond angle outliers.

There are no chirality outliers.

There are no planarity outliers.

### 5.2 Too-close contacts [i](#)

In the following table, the Non-H and H(model) columns list the number of non-hydrogen atoms and hydrogen atoms in the chain respectively. The H(added) column lists the number of hydrogen atoms added and optimized by MolProbity. The Clashes column lists the number of clashes within the asymmetric unit, whereas Symm-Clashes lists symmetry related clashes.

Mol	Chain	Non-H	H(model)	H(added)	Clashes	Symm-Clashes
1	A	2691	0	2639	27	0
1	B	2691	0	2639	16	0
2	A	16	0	14	3	0
2	B	16	0	14	0	0
3	A	1	0	0	0	0
3	B	1	0	0	0	0
4	A	1	0	0	0	0
4	B	1	0	0	0	0

*Continued on next page...*

*Continued from previous page...*

Mol	Chain	Non-H	H(model)	H(added)	Clashes	Symm-Clashes
5	B	1	0	0	0	0
6	A	56	0	0	1	0
6	B	48	0	0	1	0
All	All	5523	0	5306	42	0

The all-atom clashscore is defined as the number of clashes found per 1000 atoms (including hydrogen atoms). The all-atom clashscore for this structure is 4.

All (42) close contacts within the same asymmetric unit are listed below, sorted by their clash magnitude.

Atom-1	Atom-2	Interatomic distance (Å)	Clash overlap (Å)
1:B:481:GLN:HB3	1:B:482:PRO:HD3	1.73	0.68
1:A:267:MET:SD	1:A:479:MET:HE1	2.33	0.68
1:B:481:GLN:HB3	1:B:482:PRO:CD	2.28	0.63
1:A:475:VAL:HG13	1:A:479:MET:HG3	1.82	0.61
1:A:481:GLN:HB3	1:A:482:PRO:HD3	1.83	0.60
1:A:451:THR:HG22	1:A:494:LYS:HE2	1.83	0.60
1:A:267:MET:SD	1:A:479:MET:CE	2.90	0.59
1:A:267:MET:HE3	1:A:479:MET:CE	2.35	0.56
1:A:267:MET:CE	1:A:479:MET:CE	2.85	0.55
1:B:271:CYS:HA	1:B:474:MET:HE2	1.89	0.54
1:A:188:LEU:HB2	1:A:193:ILE:CD1	2.39	0.53
1:A:267:MET:CE	1:A:479:MET:HE2	2.39	0.53
1:B:271:CYS:HA	1:B:474:MET:CE	2.38	0.52
1:A:267:MET:CE	1:A:267:MET:HA	2.39	0.52
1:A:478:ILE:HD13	1:A:479:MET:HG2	1.90	0.52
1:A:399:LYS:NZ	6:A:99:HOH:O	2.37	0.51
1:A:478:ILE:C	1:A:478:ILE:HD13	2.33	0.48
1:B:379:MET:HE2	1:B:382:PHE:CD1	2.49	0.47
1:A:424:TYR:CE2	2:A:1:IBM:H143	2.50	0.47
1:A:267:MET:HE3	1:A:479:MET:HE1	1.95	0.46
1:A:400:CYS:O	1:A:404:SER:HB3	2.15	0.46
1:B:214:CYS:O	1:B:218:MET:HG3	2.16	0.46
1:A:288:ALA:O	1:A:292:HIS:HB3	2.15	0.46
1:A:374:SER:O	1:A:378:LYS:HG2	2.16	0.45
1:A:267:MET:CE	1:A:479:MET:HE1	2.46	0.44
1:A:188:LEU:O	1:B:237:ARG:NH1	2.50	0.44
1:B:223:GLY:HA2	6:B:70:HOH:O	2.17	0.43
1:A:379:MET:HE2	1:A:379:MET:HA	2.01	0.43
1:A:237:ARG:NH1	1:B:188:LEU:O	2.52	0.43
1:B:404:SER:O	1:B:407:VAL:HB	2.19	0.42

*Continued on next page...*

Continued from previous page...

Atom-1	Atom-2	Interatomic distance (Å)	Clash overlap (Å)
1:A:403:ILE:HD11	1:A:464:MET:CE	2.50	0.42
1:B:429:ASP:OD1	1:B:444:ARG:NH1	2.52	0.42
1:A:424:TYR:HE2	2:A:1:IBM:H143	1.85	0.41
1:B:506:LYS:HE3	1:B:506:LYS:HB2	1.89	0.41
1:B:315:TYR:CE1	1:B:323:ASN:HB3	2.55	0.41
1:A:267:MET:CA	1:A:267:MET:HE2	2.51	0.41
1:B:344:ILE:HA	1:B:345:PRO:HD2	1.88	0.41
1:A:345:PRO:HA	1:A:346:PRO:HD3	1.96	0.41
2:A:1:IBM:HN9	2:A:1:IBM:H132	1.86	0.41
1:B:465:PHE:CE2	1:B:479:MET:HG2	2.56	0.41
1:B:503:LEU:HA	1:B:503:LEU:HD23	1.93	0.41
1:A:188:LEU:HB2	1:A:193:ILE:HD12	2.04	0.40

There are no symmetry-related clashes.

## 5.3 Torsion angles [i](#)

### 5.3.1 Protein backbone [i](#)

In the following table, the Percentiles column shows the percent Ramachandran outliers of the chain as a percentile score with respect to all X-ray entries followed by that with respect to entries of similar resolution.

The Analysed column shows the number of residues for which the backbone conformation was analysed, and the total number of residues.

Mol	Chain	Analysed	Favoured	Allowed	Outliers	Percentiles	
1	A	324/326 (99%)	314 (97%)	10 (3%)	0	100	100
1	B	324/326 (99%)	313 (97%)	11 (3%)	0	100	100
All	All	648/652 (99%)	627 (97%)	21 (3%)	0	100	100

There are no Ramachandran outliers to report.

### 5.3.2 Protein sidechains [i](#)

In the following table, the Percentiles column shows the percent sidechain outliers of the chain as a percentile score with respect to all X-ray entries followed by that with respect to entries of similar resolution.

The Analysed column shows the number of residues for which the sidechain conformation was

analysed, and the total number of residues.

Mol	Chain	Analysed	Rotameric	Outliers	Percentiles	
1	A	302/302 (100%)	296 (98%)	6 (2%)	63	89
1	B	302/302 (100%)	297 (98%)	5 (2%)	68	90
All	All	604/604 (100%)	593 (98%)	11 (2%)	66	90

All (11) residues with a non-rotameric sidechain are listed below:

Mol	Chain	Res	Type
1	A	257	CYS
1	A	444	ARG
1	A	448	THR
1	A	474	MET
1	A	478	ILE
1	A	489	ARG
1	B	186	TYR
1	B	257	CYS
1	B	337	GLU
1	B	474	MET
1	B	479	MET

Some sidechains can be flipped to improve hydrogen bonding and reduce clashes. There are no such sidechains identified.

### 5.3.3 RNA [i](#)

There are no RNA molecules in this entry.

## 5.4 Non-standard residues in protein, DNA, RNA chains [i](#)

There are no non-standard protein/DNA/RNA residues in this entry.

## 5.5 Carbohydrates [i](#)

There are no carbohydrates in this entry.

## 5.6 Ligand geometry [i](#)

Of 7 ligands modelled in this entry, 5 are monoatomic - leaving 2 for Mogul analysis.

In the following table, the Counts columns list the number of bonds (or angles) for which Mogul statistics could be retrieved, the number of bonds (or angles) that are observed in the model and the number of bonds (or angles) that are defined in the chemical component dictionary. The Link column lists molecule types, if any, to which the group is linked. The Z score for a bond length (or angle) is the number of standard deviations the observed value is removed from the expected value. A bond length (or angle) with  $|Z| > 2$  is considered an outlier worth inspection. RMSZ is the root-mean-square of all Z scores of the bond lengths (or angles).

Mol	Type	Chain	Res	Link	Bond lengths			Bond angles		
					Counts	RMSZ	# Z  > 2	Counts	RMSZ	# Z  > 2
2	IBM	A	1	-	9,17,17	2.14	2 (22%)	9,25,25	1.09	1 (11%)
2	IBM	B	507	-	9,17,17	2.16	3 (33%)	9,25,25	1.15	1 (11%)

In the following table, the Chirals column lists the number of chiral outliers, the number of chiral centers analysed, the number of these observed in the model and the number defined in the chemical component dictionary. Similar counts are reported in the Torsion and Rings columns. '-' means no outliers of that kind were identified.

Mol	Type	Chain	Res	Link	Chirals	Torsions	Rings
2	IBM	A	1	-	-	0/4/4/4	0/2/2/2
2	IBM	B	507	-	-	0/4/4/4	0/2/2/2

All (5) bond length outliers are listed below:

Mol	Chain	Res	Type	Atoms	Z	Observed(Å)	Ideal(Å)
2	B	507	IBM	C4-N3	-3.21	1.35	1.39
2	A	1	IBM	C4-N3	-3.10	1.35	1.39
2	B	507	IBM	C6-N1	-2.19	1.35	1.38
2	B	507	IBM	O6-C6	4.87	1.36	1.24
2	A	1	IBM	O6-C6	5.33	1.37	1.24

All (2) bond angle outliers are listed below:

Mol	Chain	Res	Type	Atoms	Z	Observed(°)	Ideal(°)
2	B	507	IBM	C4-C5-N7	-2.37	107.30	109.48
2	A	1	IBM	C4-C5-N7	-2.04	107.60	109.48

There are no chirality outliers.

There are no torsion outliers.

There are no ring outliers.

1 monomer is involved in 3 short contacts:

Mol	Chain	Res	Type	Clashes	Symm-Clashes
2	A	1	IBM	3	0

## 5.7 Other polymers [i](#)

There are no such residues in this entry.

## 5.8 Polymer linkage issues [i](#)

There are no chain breaks in this entry.

## 6 Fit of model and data ⓘ

### 6.1 Protein, DNA and RNA chains ⓘ

In the following table, the column labelled ‘#RSRZ> 2’ contains the number (and percentage) of RSRZ outliers, followed by percent RSRZ outliers for the chain as percentile scores relative to all X-ray entries and entries of similar resolution. The OWAB column contains the minimum, median, 95<sup>th</sup> percentile and maximum values of the occupancy-weighted average B-factor per residue. The column labelled ‘Q< 0.9’ lists the number of (and percentage) of residues with an average occupancy less than 0.9.

Mol	Chain	Analysed	<RSRZ>	#RSRZ>2	OWAB(Å <sup>2</sup> )	Q<0.9
1	A	326/326 (100%)	0.15	9 (2%) 56 50	25, 42, 61, 92	0
1	B	326/326 (100%)	0.21	20 (6%) 25 18	28, 47, 68, 96	0
All	All	652/652 (100%)	0.18	29 (4%) 38 31	25, 44, 67, 96	0

All (29) RSRZ outliers are listed below:

Mol	Chain	Res	Type	RSRZ
1	B	506	LYS	6.6
1	B	505	LYS	5.6
1	B	181	PRO	4.6
1	A	182	THR	4.5
1	B	182	THR	4.1
1	B	381	ASN	3.7
1	B	380	GLU	3.7
1	A	380	GLU	3.4
1	B	346	PRO	3.3
1	A	181	PRO	3.1
1	B	347	ASP	3.0
1	A	505	LYS	3.0
1	A	381	ASN	2.9
1	B	194	GLU	2.9
1	A	185	LYS	2.8
1	A	437	PRO	2.5
1	B	501	LYS	2.3
1	B	504	GLN	2.3
1	B	191	GLU	2.3
1	B	433	SER	2.2
1	B	384	TYR	2.2
1	B	183	TYR	2.2
1	A	439	ALA	2.1
1	A	477	GLU	2.1

*Continued on next page...*

*Continued from previous page...*

Mol	Chain	Res	Type	RSRZ
1	B	260	VAL	2.0
1	B	438	VAL	2.0
1	B	382	PHE	2.0
1	B	383	ASP	2.0
1	B	259	CYS	2.0

## 6.2 Non-standard residues in protein, DNA, RNA chains [i](#)

There are no non-standard protein/DNA/RNA residues in this entry.

## 6.3 Carbohydrates [i](#)

There are no carbohydrates in this entry.

## 6.4 Ligands [i](#)

In the following table, the Atoms column lists the number of modelled atoms in the group and the number defined in the chemical component dictionary. LLDF column lists the quality of electron density of the group with respect to its neighbouring residues in protein, DNA or RNA chains. The B-factors column lists the minimum, median, 95<sup>th</sup> percentile and maximum values of B factors of atoms in the group. The column labelled 'Q < 0.9' lists the number of atoms with occupancy less than 0.9.

Mol	Type	Chain	Res	Atoms	RSCC	RSR	LLDF	B-factors(Å <sup>2</sup> )	Q<0.9
2	IBM	B	507	16/16	0.94	0.22	1.41	56,58,60,60	0
2	IBM	A	1	16/16	0.94	0.19	0.47	53,55,58,58	0
4	MG	A	508	1/1	0.95	0.17	-0.23	46,46,46,46	0
4	MG	B	1	1/1	0.94	0.12	-1.51	42,42,42,42	0
3	ZN	B	2	1/1	0.95	0.08	-1.99	83,83,83,83	0
5	CL	B	508	1/1	0.87	0.10	-	67,67,67,67	0
3	ZN	A	507	1/1	0.97	0.10	-	69,69,69,69	0

## 6.5 Other polymers [i](#)

There are no such residues in this entry.