



Full wwPDB X-ray Structure Validation Report ⓘ

Feb 1, 2016 – 06:54 PM GMT

PDB ID : 4N5G
Title : Crystal Structure of RXRa LBD complexed with a synthetic modulator K8012
Authors : Aleshin, A.E.; Su, Y.; Zhang, X.; Liddington, R.C.
Deposited on : 2013-10-09
Resolution : 2.11 Å(reported)

This is a Full wwPDB X-ray Structure Validation Report for a publicly released PDB entry.
We welcome your comments at validation@mail.wwpdb.org
A user guide is available at
<http://wwpdb.org/validation/2016/XrayValidationReportHelp>
with specific help available everywhere you see the ⓘ symbol.

The following versions of software and data (see [references ⓘ](#)) were used in the production of this report:

MolProbity : 4.02b-467
Mogul : 1.7 (RC4), CSD as536be (2015)
Xtriage (Phenix) : 1.9-1692
EDS : rb-20026688
Percentile statistics : 20151230.v01 (using entries in the PDB archive December 30th 2015)
Refmac : 5.8.0135
CCP4 : 6.5.0
Ideal geometry (proteins) : Engh & Huber (2001)
Ideal geometry (DNA, RNA) : Parkinson et al. (1996)
Validation Pipeline (wwPDB-VP) : trunk26865

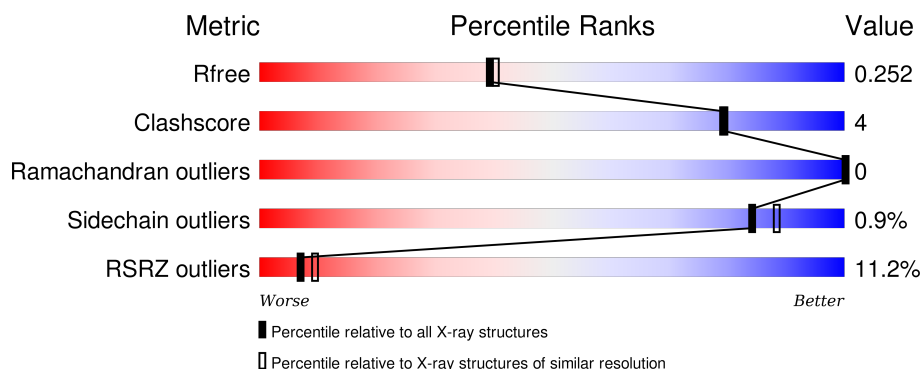
1 Overall quality at a glance i

The following experimental techniques were used to determine the structure:

X-RAY DIFFRACTION

The reported resolution of this entry is 2.11 Å.

Percentile scores (ranging between 0-100) for global validation metrics of the entry are shown in the following graphic. The table shows the number of entries on which the scores are based.



Metric	Whole archive (#Entries)	Similar resolution (#Entries, resolution range(Å))
R_{free}	91344	4587 (2.14-2.10)
Clashscore	102246	5132 (2.14-2.10)
Ramachandran outliers	100387	5080 (2.14-2.10)
Sidechain outliers	100360	5081 (2.14-2.10)
RSRZ outliers	91569	4597 (2.14-2.10)

The table below summarises the geometric issues observed across the polymeric chains and their fit to the electron density. The red, orange, yellow and green segments on the lower bar indicate the fraction of residues that contain outliers for ≥ 3 , 2, 1 and 0 types of geometric quality criteria. A grey segment represents the fraction of residues that are not modelled. The numeric value for each fraction is indicated below the corresponding segment, with a dot representing fractions $\leq 5\%$. The upper red bar (where present) indicates the fraction of residues that have poor fit to the electron density. The numeric value is given above the bar.

Mol	Chain	Length	Quality of chain
1	A	244	<div> <div>6%</div> <div> <div></div> <div>73%</div> <div>7%</div> <div>20%</div> </div> </div>
1	B	244	<div> <div>15%</div> <div> <div></div> <div>77%</div> <div>8%</div> <div>14%</div> </div> </div>
1	C	244	<div> <div>11%</div> <div> <div></div> <div>78%</div> <div>8%</div> <div>14%</div> </div> </div>
1	D	244	<div> <div>6%</div> <div> <div></div> <div>73%</div> <div>7%</div> <div>20%</div> </div> </div>

2 Entry composition

There are 3 unique types of molecules in this entry. The entry contains 6788 atoms, of which 0 are hydrogens and 0 are deuteriums.

In the tables below, the ZeroOcc column contains the number of atoms modelled with zero occupancy, the AltConf column contains the number of residues with at least one atom in alternate conformation and the Trace column contains the number of residues modelled with at most 2 atoms.

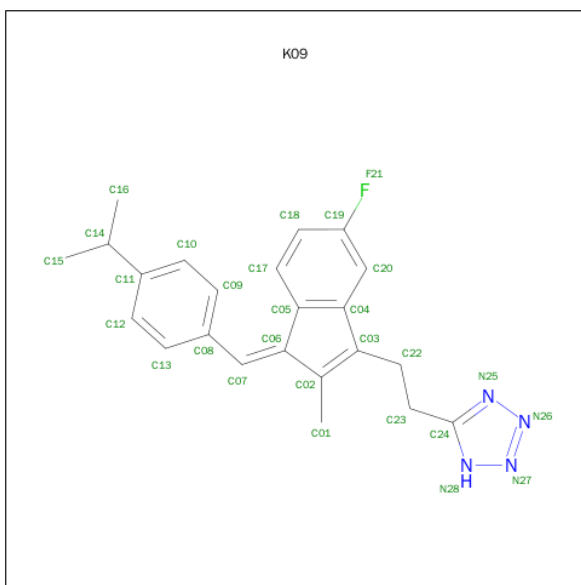
- Molecule 1 is a protein called Retinoic acid receptor RXR-alpha.

Mol	Chain	Residues	Atoms					ZeroOcc	AltConf	Trace
1	A	196	Total	C	N	O	S	0	3	0
			1570	1010	270	281	9			
1	B	209	Total	C	N	O	S	0	1	0
			1656	1064	286	297	9			
1	C	209	Total	C	N	O	S	0	2	0
			1665	1069	286	301	9			
1	D	196	Total	C	N	O	S	0	2	0
			1565	1006	269	281	9			

There are 16 discrepancies between the modelled and reference sequences:

Chain	Residue	Modelled	Actual	Comment	Reference
A	219	GLY	-	EXPRESSION TAG	UNP P19793
A	220	SER	-	EXPRESSION TAG	UNP P19793
A	221	HIS	-	EXPRESSION TAG	UNP P19793
A	222	MET	-	EXPRESSION TAG	UNP P19793
B	219	GLY	-	EXPRESSION TAG	UNP P19793
B	220	SER	-	EXPRESSION TAG	UNP P19793
B	221	HIS	-	EXPRESSION TAG	UNP P19793
B	222	MET	-	EXPRESSION TAG	UNP P19793
C	219	GLY	-	EXPRESSION TAG	UNP P19793
C	220	SER	-	EXPRESSION TAG	UNP P19793
C	221	HIS	-	EXPRESSION TAG	UNP P19793
C	222	MET	-	EXPRESSION TAG	UNP P19793
D	219	GLY	-	EXPRESSION TAG	UNP P19793
D	220	SER	-	EXPRESSION TAG	UNP P19793
D	221	HIS	-	EXPRESSION TAG	UNP P19793
D	222	MET	-	EXPRESSION TAG	UNP P19793

- Molecule 2 is 5-(2-((1Z)-5-FLUORO-2-METHYL-1-[4-(PROPAN-2-YL)BENZYLIDENE]-1H-INDEN-3-YL)ETHYL)-1H-TETRAZOLE (three-letter code: K09) (formula: C₂₃H₂₃FN₄).



Mol	Chain	Residues	Atoms				ZeroOcc	AltConf
2	A	1	Total	C	F	N	0	0
			28	23	1	4		
2	D	1	Total	C	F	N	0	0
			28	23	1	4		

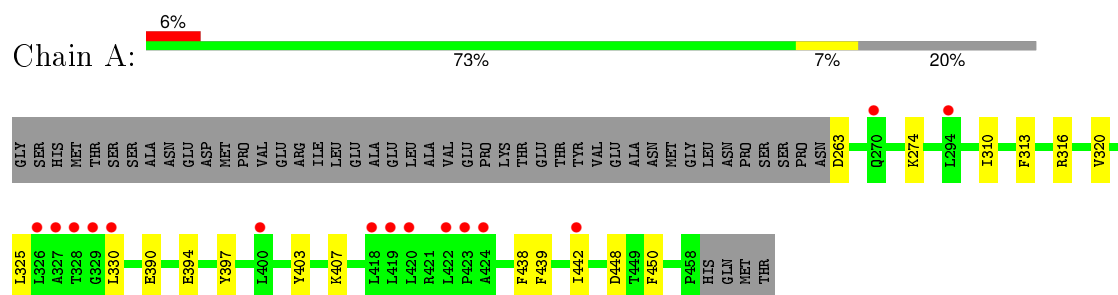
- Molecule 3 is water.

Mol	Chain	Residues	Atoms		ZeroOcc	AltConf
3	A	91	Total	O	0	0
			91	91		
3	B	82	Total	O	0	0
			82	82		
3	C	45	Total	O	0	0
			45	45		
3	D	58	Total	O	0	0
			58	58		

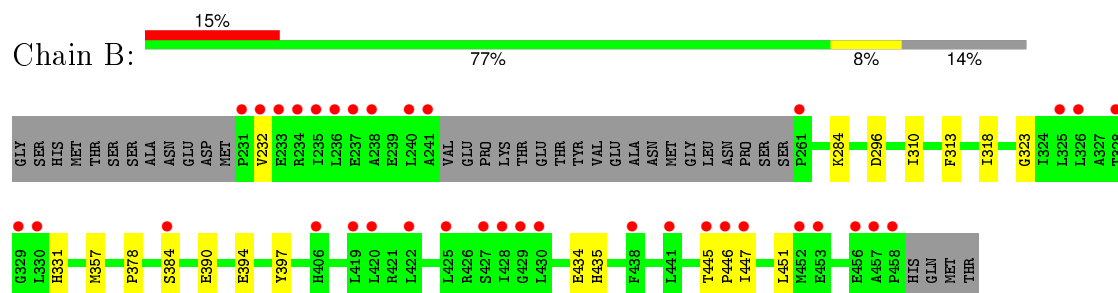
3 Residue-property plots [i](#)

These plots are drawn for all protein, RNA and DNA chains in the entry. The first graphic for a chain summarises the proportions of errors displayed in the second graphic. The second graphic shows the sequence view annotated by issues in geometry and electron density. Residues are color-coded according to the number of geometric quality criteria for which they contain at least one outlier: green = 0, yellow = 1, orange = 2 and red = 3 or more. A red dot above a residue indicates a poor fit to the electron density ($RSRZ > 2$). Stretches of 2 or more consecutive residues without any outlier are shown as a green connector. Residues present in the sample, but not in the model, are shown in grey.

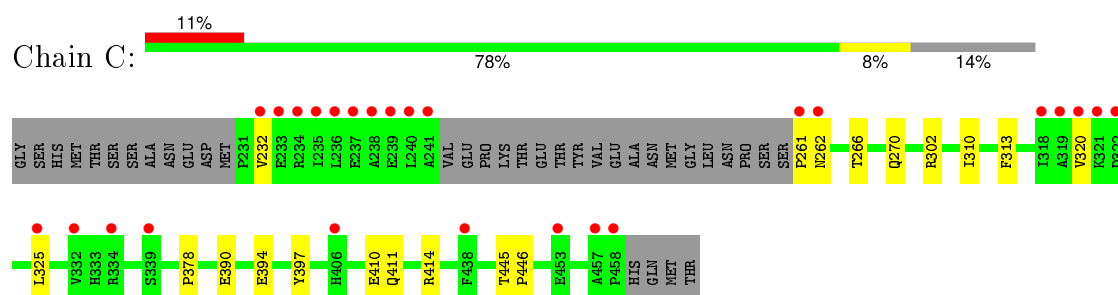
• Molecule 1: Retinoic acid receptor RXR-alpha



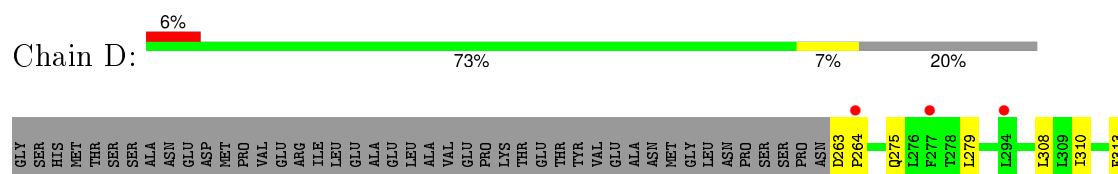
• Molecule 1: Retinoic acid receptor RXR-alpha

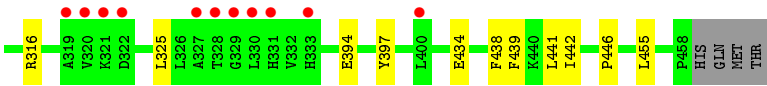


• Molecule 1: Retinoic acid receptor RXR-alpha



• Molecule 1: Retinoic acid receptor RXR-alpha





4 Data and refinement statistics

Property	Value	Source
Space group	P 1 21 1	Depositor
Cell constants a, b, c, α , β , γ	46.59Å 98.83Å 110.58Å 90.00° 99.02° 90.00°	Depositor
Resolution (Å)	37.00 – 2.11 37.24 – 2.11	Depositor EDS
% Data completeness (in resolution range)	87.8 (37.00-2.11) 85.9 (37.24-2.11)	Depositor EDS
R_{merge}	0.08	Depositor
R_{sym}	(Not available)	Depositor
$\langle I/\sigma(I) \rangle$ ¹	1.38 (at 2.12Å)	Xtriage
Refinement program	PHENIX (phenix.refine: 1.8.2_1309)	Depositor
R, R_{free}	0.199 , 0.247 0.208 , 0.252	Depositor DCC
R_{free} test set	2410 reflections (5.18%)	DCC
Wilson B-factor (Å ²)	40.0	Xtriage
Anisotropy	0.252	Xtriage
Bulk solvent k_{sol} (e/Å ³), B_{sol} (Å ²)	0.33 , 54.5	EDS
Estimated twinning fraction	No twinning to report.	Xtriage
L-test for twinning ²	$\langle L \rangle = 0.46$, $\langle L^2 \rangle = 0.28$	Xtriage
Outliers	0 of 48892 reflections	Xtriage
F_o, F_c correlation	0.95	EDS
Total number of atoms	6788	wwPDB-VP
Average B, all atoms (Å ²)	51.0	wwPDB-VP

Xtriage's analysis on translational NCS is as follows: *The largest off-origin peak in the Patterson function is 12.05% of the height of the origin peak. No significant pseudotranslation is detected.*

¹Intensities estimated from amplitudes.

²Theoretical values of $\langle |L| \rangle$, $\langle L^2 \rangle$ for acentric reflections are 0.5, 0.375 respectively for untwinned datasets, and 0.333, 0.2 for perfectly twinned datasets.

5 Model quality [i](#)

5.1 Standard geometry [i](#)

Bond lengths and bond angles in the following residue types are not validated in this section: K09

The Z score for a bond length (or angle) is the number of standard deviations the observed value is removed from the expected value. A bond length (or angle) with $|Z| > 5$ is considered an outlier worth inspection. RMSZ is the root-mean-square of all Z scores of the bond lengths (or angles).

Mol	Chain	Bond lengths		Bond angles	
		RMSZ	$\# Z > 5$	RMSZ	$\# Z > 5$
1	A	0.21	0/1603	0.40	0/2168
1	B	0.21	0/1690	0.41	0/2285
1	C	0.21	0/1699	0.40	0/2297
1	D	0.23	0/1598	0.40	0/2161
All	All	0.22	0/6590	0.40	0/8911

There are no bond length outliers.

There are no bond angle outliers.

There are no chirality outliers.

There are no planarity outliers.

5.2 Too-close contacts [i](#)

In the following table, the Non-H and H(model) columns list the number of non-hydrogen atoms and hydrogen atoms in the chain respectively. The H(added) column lists the number of hydrogen atoms added and optimized by MolProbity. The Clashes column lists the number of clashes within the asymmetric unit, whereas Symm-Clashes lists symmetry related clashes.

Mol	Chain	Non-H	H(model)	H(added)	Clashes	Symm-Clashes
1	A	1570	0	1603	12	0
1	B	1656	0	1693	12	0
1	C	1665	0	1696	12	0
1	D	1565	0	1594	12	0
2	A	28	0	23	2	0
2	D	28	0	23	1	0
3	A	91	0	0	0	0
3	B	82	0	0	0	0
3	C	45	0	0	0	0

Continued on next page...

Continued from previous page...

Mol	Chain	Non-H	H(model)	H(added)	Clashes	Symm-Clashes
3	D	58	0	0	1	0
All	All	6788	0	6632	46	0

The all-atom clashscore is defined as the number of clashes found per 1000 atoms (including hydrogen atoms). The all-atom clashscore for this structure is 4.

All (46) close contacts within the same asymmetric unit are listed below, sorted by their clash magnitude.

Atom-1	Atom-2	Interatomic distance (Å)	Clash overlap (Å)
1:C:320:VAL:HG11	1:C:325:LEU:HB2	1.64	0.79
1:C:411:GLN:HE22	1:C:414:ARG:HH11	1.45	0.65
1:A:439:PHE:H	2:A:501:K09:H25	1.45	0.64
1:D:439:PHE:H	2:D:501:K09:H25	1.50	0.59
1:B:434:GLU:HG3	1:B:435:HIS:HD2	1.69	0.58
1:A:316:ARG:NH1	1:A:325:LEU:O	2.37	0.56
1:D:263:ASP:N	1:D:263:ASP:OD1	2.41	0.54
1:A:263:ASP:N	1:A:263:ASP:OD1	2.40	0.54
1:D:438:PHE:O	1:D:442:ILE:HG12	2.08	0.54
1:D:394:GLU:HA	1:D:397:TYR:CE2	2.43	0.53
1:D:310:ILE:HA	1:D:313:PHE:CE2	2.45	0.52
1:A:310:ILE:HA	1:A:313:PHE:CE2	2.44	0.51
1:A:394:GLU:HA	1:A:397:TYR:CE2	2.46	0.51
1:B:434:GLU:HG3	1:B:435:HIS:CD2	2.48	0.49
1:C:394:GLU:HG2	1:C:397:TYR:OH	2.12	0.48
1:A:448:ASP:OD1	1:C:302:ARG:NH1	2.46	0.48
1:B:323:GLY:HA3	1:B:331:HIS:HE1	1.79	0.48
1:B:394:GLU:HG2	1:B:397:TYR:OH	2.15	0.47
1:C:310:ILE:HA	1:C:313:PHE:CE2	2.49	0.47
1:B:394:GLU:HA	1:B:397:TYR:CE2	2.50	0.47
1:B:296:ASP:OD2	1:B:384:SER:OG	2.29	0.47
1:A:438:PHE:O	1:A:442:ILE:HG12	2.15	0.46
1:A:442:ILE:HD11	2:A:501:K09:H18	1.97	0.46
1:A:403:TYR:CZ	1:A:407:LYS:HD3	2.51	0.46
1:D:316:ARG:HG2	1:D:325:LEU:HD23	1.98	0.46
1:D:316:ARG:O	3:D:636:HOH:O	2.21	0.46
1:D:279:LEU:HD11	1:D:308:LEU:HD13	1.98	0.46
1:D:264:PRO:HB2	1:D:446:PRO:HB3	1.98	0.46
1:B:318:ILE:HD11	1:B:357:MET:HB3	1.98	0.44
1:C:445:THR:HB	1:C:446:PRO:HD3	2.00	0.44
1:B:310:ILE:HA	1:B:313:PHE:CZ	2.53	0.43
1:B:445:THR:HB	1:B:446:PRO:HD3	2.00	0.43

Continued on next page...

Continued from previous page...

Atom-1	Atom-2	Interatomic distance (Å)	Clash overlap (Å)
1:C:261:PRO:HB2	1:C:262:ASN:H	1.58	0.43
1:A:330:LEU:HD21	1:A:442:ILE:HG21	2.01	0.42
1:C:378:PRO:HG3	1:C:390:GLU:OE1	2.19	0.42
1:B:378:PRO:HG3	1:B:390:GLU:OE1	2.20	0.42
1:D:441:LEU:HA	1:D:441:LEU:HD23	1.90	0.42
1:B:284:LYS:HE3	1:D:455:LEU:HA	2.03	0.41
1:A:390:GLU:O	1:A:394:GLU:HG3	2.21	0.41
1:A:320:VAL:HG21	1:A:325:LEU:HG	2.03	0.41
1:D:263:ASP:HA	1:D:264:PRO:HD3	1.93	0.41
1:C:310:ILE:HA	1:C:313:PHE:CZ	2.55	0.41
1:C:411:GLN:HE22	1:C:414:ARG:NH1	2.17	0.41
1:C:410:GLU:HG2	1:C:411:GLN:HG3	2.03	0.41
1:C:266:THR:O	1:C:270:GLN:HG3	2.22	0.40
1:B:447:ILE:O	1:B:451:LEU:HD13	2.22	0.40

There are no symmetry-related clashes.

5.3 Torsion angles [i](#)

5.3.1 Protein backbone [i](#)

In the following table, the Percentiles column shows the percent Ramachandran outliers of the chain as a percentile score with respect to all X-ray entries followed by that with respect to entries of similar resolution.

The Analysed column shows the number of residues for which the backbone conformation was analysed, and the total number of residues.

Mol	Chain	Analysed	Favoured	Allowed	Outliers	Percentiles	
1	A	197/244 (81%)	193 (98%)	4 (2%)	0	100	100
1	B	206/244 (84%)	203 (98%)	3 (2%)	0	100	100
1	C	207/244 (85%)	203 (98%)	4 (2%)	0	100	100
1	D	196/244 (80%)	192 (98%)	4 (2%)	0	100	100
All	All	806/976 (83%)	791 (98%)	15 (2%)	0	100	100

There are no Ramachandran outliers to report.

5.3.2 Protein sidechains

In the following table, the Percentiles column shows the percent sidechain outliers of the chain as a percentile score with respect to all X-ray entries followed by that with respect to entries of similar resolution.

The Analysed column shows the number of residues for which the sidechain conformation was analysed, and the total number of residues.

Mol	Chain	Analysed	Rotameric	Outliers	Percentiles	
1	A	171/210 (81%)	169 (99%)	2 (1%)	78	83
1	B	180/210 (86%)	179 (99%)	1 (1%)	90	93
1	C	181/210 (86%)	180 (99%)	1 (1%)	90	93
1	D	170/210 (81%)	167 (98%)	3 (2%)	66	71
All	All	702/840 (84%)	695 (99%)	7 (1%)	84	86

All (7) residues with a non-rotameric sidechain are listed below:

Mol	Chain	Res	Type
1	A	274	LYS
1	A	450	PHE
1	B	232	VAL
1	C	232	VAL
1	D	275	GLN
1	D	434[A]	GLU
1	D	434[B]	GLU

Some sidechains can be flipped to improve hydrogen bonding and reduce clashes. All (5) such sidechains are listed below:

Mol	Chain	Res	Type
1	A	338	HIS
1	A	406	HIS
1	B	435	HIS
1	C	297	GLN
1	C	411	GLN

5.3.3 RNA

There are no RNA molecules in this entry.

5.4 Non-standard residues in protein, DNA, RNA chains ⓘ

There are no non-standard protein/DNA/RNA residues in this entry.

5.5 Carbohydrates ⓘ

There are no carbohydrates in this entry.

5.6 Ligand geometry ⓘ

2 ligands are modelled in this entry.

In the following table, the Counts columns list the number of bonds (or angles) for which Mogul statistics could be retrieved, the number of bonds (or angles) that are observed in the model and the number of bonds (or angles) that are defined in the chemical component dictionary. The Link column lists molecule types, if any, to which the group is linked. The Z score for a bond length (or angle) is the number of standard deviations the observed value is removed from the expected value. A bond length (or angle) with $|Z| > 2$ is considered an outlier worth inspection. RMSZ is the root-mean-square of all Z scores of the bond lengths (or angles).

Mol	Type	Chain	Res	Link	Bond lengths			Bond angles		
					Counts	RMSZ	$\# Z > 2$	Counts	RMSZ	$\# Z > 2$
2	K09	A	501	-	30,31,31	3.76	9 (30%)	36,44,44	1.44	5 (13%)
2	K09	D	501	-	30,31,31	3.75	9 (30%)	36,44,44	1.40	4 (11%)

In the following table, the Chirals column lists the number of chiral outliers, the number of chiral centers analysed, the number of these observed in the model and the number defined in the chemical component dictionary. Similar counts are reported in the Torsion and Rings columns. '-' means no outliers of that kind were identified.

Mol	Type	Chain	Res	Link	Chirals	Torsions	Rings
2	K09	A	501	-	-	0/13/29/29	0/4/4/4
2	K09	D	501	-	-	0/13/29/29	0/4/4/4

All (18) bond length outliers are listed below:

Mol	Chain	Res	Type	Atoms	Z	Observed(Å)	Ideal(Å)
2	D	501	K09	F21-C19	-16.78	0.98	1.36
2	A	501	K09	F21-C19	-16.76	0.98	1.36
2	A	501	K09	C05-C04	2.37	1.44	1.39
2	D	501	K09	C05-C04	2.44	1.44	1.39
2	D	501	K09	C08-C07	2.58	1.52	1.46
2	A	501	K09	C08-C07	2.59	1.52	1.46

Continued on next page...

Continued from previous page...

Mol	Chain	Res	Type	Atoms	Z	Observed(Å)	Ideal(Å)
2	D	501	K09	C24-N25	2.63	1.35	1.33
2	A	501	K09	C24-N25	2.66	1.35	1.33
2	A	501	K09	C18-C19	2.86	1.42	1.37
2	D	501	K09	C18-C19	2.95	1.43	1.37
2	D	501	K09	C24-N28	3.39	1.35	1.33
2	A	501	K09	C24-N28	3.52	1.35	1.33
2	A	501	K09	C05-C06	5.18	1.55	1.45
2	D	501	K09	C05-C06	5.19	1.55	1.45
2	A	501	K09	C03-C02	5.24	1.48	1.36
2	D	501	K09	C03-C02	5.25	1.48	1.36
2	D	501	K09	C04-C03	5.93	1.54	1.44
2	A	501	K09	C04-C03	6.00	1.54	1.44

All (9) bond angle outliers are listed below:

Mol	Chain	Res	Type	Atoms	Z	Observed(°)	Ideal(°)
2	A	501	K09	N28-N27-N26	-3.13	107.79	109.59
2	D	501	K09	N28-N27-N26	-3.11	107.80	109.59
2	D	501	K09	C18-C19-C20	-2.76	119.79	123.35
2	A	501	K09	C18-C19-C20	-2.75	119.79	123.35
2	A	501	K09	C08-C07-C06	-2.09	125.86	129.80
2	D	501	K09	C24-N25-N26	3.49	107.80	104.39
2	D	501	K09	C24-N28-N27	3.50	107.81	104.39
2	A	501	K09	C24-N25-N26	3.52	107.83	104.39
2	A	501	K09	C24-N28-N27	3.55	107.86	104.39

There are no chirality outliers.

There are no torsion outliers.

There are no ring outliers.

2 monomers are involved in 3 short contacts:

Mol	Chain	Res	Type	Clashes	Symm-Clashes
2	A	501	K09	2	0
2	D	501	K09	1	0

5.7 Other polymers

There are no such residues in this entry.

5.8 Polymer linkage issues ⓘ

There are no chain breaks in this entry.

6 Fit of model and data ⓘ

6.1 Protein, DNA and RNA chains ⓘ

In the following table, the column labelled ‘#RSRZ> 2’ contains the number (and percentage) of RSRZ outliers, followed by percent RSRZ outliers for the chain as percentile scores relative to all X-ray entries and entries of similar resolution. The OWAB column contains the minimum, median, 95th percentile and maximum values of the occupancy-weighted average B-factor per residue. The column labelled ‘Q< 0.9’ lists the number of (and percentage) of residues with an average occupancy less than 0.9.

Mol	Chain	Analysed	<RSRZ>	#RSRZ>2	OWAB(Å ²)	Q<0.9
1	A	196/244 (80%)	0.54	15 (7%) 16 22	23, 42, 70, 107	0
1	B	209/244 (85%)	0.96	36 (17%) 2 3	23, 47, 93, 121	1 (0%)
1	C	209/244 (85%)	0.65	26 (12%) 5 7	30, 52, 94, 122	0
1	D	196/244 (80%)	0.41	14 (7%) 19 25	28, 46, 75, 107	0
All	All	810/976 (82%)	0.64	91 (11%) 7 9	23, 47, 90, 122	1 (0%)

All (91) RSRZ outliers are listed below:

Mol	Chain	Res	Type	RSRZ
1	B	261	PRO	7.0
1	C	233	GLU	6.5
1	D	327	ALA	6.1
1	A	327	ALA	6.0
1	B	234	ARG	5.8
1	B	231	PRO	5.6
1	C	457	ALA	5.3
1	B	330	LEU	5.2
1	C	261	PRO	5.1
1	D	294	LEU	5.1
1	D	328	THR	5.1
1	C	232	VAL	4.8
1	C	458	PRO	4.7
1	A	294	LEU	4.4
1	B	232	VAL	4.4
1	B	233	GLU	4.4
1	C	238	ALA	4.3
1	B	240	LEU	4.3
1	B	457	ALA	3.9
1	D	322	ASP	3.9
1	B	329	GLY	3.9

Continued on next page...

Continued from previous page...

Mol	Chain	Res	Type	RSRZ
1	D	329	GLY	3.9
1	D	319	ALA	3.8
1	C	235	ILE	3.8
1	C	236	LEU	3.8
1	B	328	THR	3.7
1	B	236	LEU	3.6
1	C	322	ASP	3.6
1	C	234	ARG	3.6
1	B	458	PRO	3.6
1	C	325	LEU	3.5
1	A	328	THR	3.5
1	D	264	PRO	3.5
1	B	441	LEU	3.4
1	B	456	GLU	3.4
1	B	430	LEU	3.4
1	C	240	LEU	3.3
1	B	325	LEU	3.2
1	A	420	LEU	3.2
1	D	277	PHE	3.2
1	C	406	HIS	3.1
1	B	326	LEU	3.1
1	A	419	LEU	3.0
1	A	422	LEU	3.0
1	B	419	LEU	3.0
1	C	320	VAL	3.0
1	C	318	ILE	2.9
1	B	420	LEU	2.9
1	D	321	LYS	2.9
1	C	332	VAL	2.9
1	C	438	PHE	2.8
1	D	330	LEU	2.7
1	C	319	ALA	2.7
1	C	262	ASN	2.7
1	B	422	LEU	2.7
1	B	452	MET	2.7
1	B	438	PHE	2.6
1	A	326	LEU	2.5
1	C	237	GLU	2.5
1	B	235	ILE	2.5
1	A	329	GLY	2.5
1	D	331	HIS	2.4
1	A	330	LEU	2.4

Continued on next page...

Continued from previous page...

Mol	Chain	Res	Type	RSRZ
1	A	400	LEU	2.4
1	D	333	HIS	2.3
1	B	429	GLY	2.3
1	B	241	ALA	2.3
1	C	239	GLU	2.3
1	B	428	ILE	2.3
1	C	241	ALA	2.3
1	C	453[A]	GLU	2.3
1	B	237	GLU	2.2
1	B	238	ALA	2.2
1	A	270	GLN	2.2
1	B	453	GLU	2.2
1	A	418	LEU	2.2
1	B	447	ILE	2.2
1	A	423	PRO	2.2
1	D	400	LEU	2.2
1	B	384	SER	2.1
1	B	425	LEU	2.1
1	C	321	LYS	2.1
1	D	320	VAL	2.1
1	C	334	ARG	2.1
1	B	427	SER	2.1
1	C	339	SER	2.1
1	A	424	ALA	2.1
1	A	442	ILE	2.0
1	B	445	THR	2.0
1	B	406	HIS	2.0
1	B	446	PRO	2.0

6.2 Non-standard residues in protein, DNA, RNA chains [i](#)

There are no non-standard protein/DNA/RNA residues in this entry.

6.3 Carbohydrates [i](#)

There are no carbohydrates in this entry.

6.4 Ligands [i](#)

In the following table, the Atoms column lists the number of modelled atoms in the group and the number defined in the chemical component dictionary. LLDF column lists the quality of electron

density of the group with respect to its neighbouring residues in protein, DNA or RNA chains. The B-factors column lists the minimum, median, 95th percentile and maximum values of B factors of atoms in the group. The column labelled 'Q< 0.9' lists the number of atoms with occupancy less than 0.9.

Mol	Type	Chain	Res	Atoms	RSCC	RSR	LLDF	B-factors(Å ²)	Q<0.9
2	K09	A	501	28/28	0.91	0.20	0.24	32,52,64,70	0
2	K09	D	501	28/28	0.94	0.15	0.12	37,54,63,77	0

6.5 Other polymers

There are no such residues in this entry.