



# Full wwPDB X-ray Structure Validation Report ⓘ

Feb 1, 2016 – 10:54 AM GMT

PDB ID : 3NHS  
Title : X-ray Crystallographic Structure Activity Relationship (SAR) of Casimiroin and its Analogs Bound to Human Quinone Reductase 2  
Authors : Sturdy, M.  
Deposited on : 2010-06-14  
Resolution : 1.78 Å(reported)

This is a Full wwPDB X-ray Structure Validation Report for a publicly released PDB entry.  
We welcome your comments at [validation@mail.wwpdb.org](mailto:validation@mail.wwpdb.org)  
A user guide is available at  
<http://wwpdb.org/validation/2016/XrayValidationReportHelp>  
with specific help available everywhere you see the ⓘ symbol.

---

The following versions of software and data (see [references ⓘ](#)) were used in the production of this report:

MolProbity : 4.02b-467  
Mogul : 1.7 (RC4), CSD as536be (2015)  
Xtriage (Phenix) : 1.9-1692  
EDS : rb-20026688  
Percentile statistics : 20151230.v01 (using entries in the PDB archive December 30th 2015)  
Refmac : 5.8.0135  
CCP4 : 6.5.0  
Ideal geometry (proteins) : Engh & Huber (2001)  
Ideal geometry (DNA, RNA) : Parkinson et al. (1996)  
Validation Pipeline (wwPDB-VP) : trunk26865

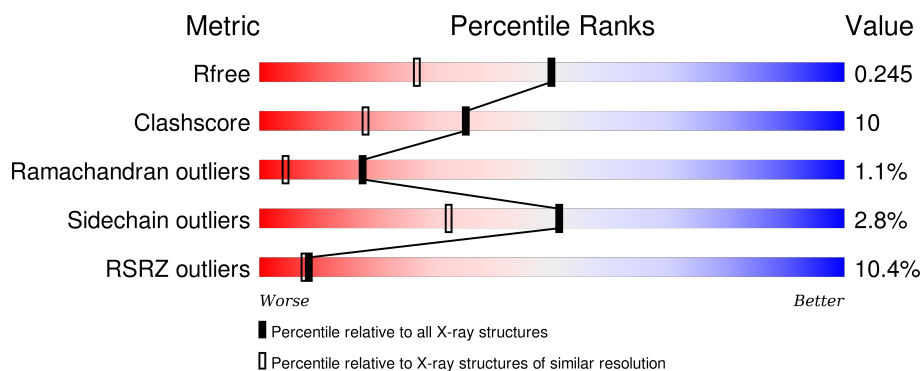
# 1 Overall quality at a glance

The following experimental techniques were used to determine the structure:

## *X-RAY DIFFRACTION*

The reported resolution of this entry is 1.78 Å.

Percentile scores (ranging between 0-100) for global validation metrics of the entry are shown in the following graphic. The table shows the number of entries on which the scores are based.



Metric	Whole archive (#Entries)	Similar resolution (#Entries, resolution range(Å))
$R_{free}$	91344	6655 (1.80-1.76)
Clashscore	102246	7658 (1.80-1.76)
Ramachandran outliers	100387	7570 (1.80-1.76)
Sidechain outliers	100360	7569 (1.80-1.76)
RSRZ outliers	91569	6671 (1.80-1.76)

The table below summarises the geometric issues observed across the polymeric chains and their fit to the electron density. The red, orange, yellow and green segments on the lower bar indicate the fraction of residues that contain outliers for  $\geq 3$ , 2, 1 and 0 types of geometric quality criteria. A grey segment represents the fraction of residues that are not modelled. The numeric value for each fraction is indicated below the corresponding segment, with a dot representing fractions  $\leq 5\%$ . The upper red bar (where present) indicates the fraction of residues that have poor fit to the electron density. The numeric value is given above the bar.

Mol	Chain	Length	Quality of chain
1	A	230	<div> <div>11%</div> <div> <div></div> <div>75%</div> <div>22%</div> <div>.</div> </div> </div>
1	B	230	<div> <div>10%</div> <div> <div></div> <div>90%</div> <div>10%</div> </div> </div>

The following table lists non-polymeric compounds, carbohydrate monomers and non-standard residues in protein, DNA, RNA chains that are outliers for geometric or electron-density-fit criteria:

Mol	Type	Chain	Res	Chirality	Geometry	Clashes	Electron density
4	MZX	B	234	-	X	X	-

## 2 Entry composition [i](#)

There are 5 unique types of molecules in this entry. The entry contains 4053 atoms, of which 0 are hydrogens and 0 are deuteriums.

In the tables below, the ZeroOcc column contains the number of atoms modelled with zero occupancy, the AltConf column contains the number of residues with at least one atom in alternate conformation and the Trace column contains the number of residues modelled with at most 2 atoms.

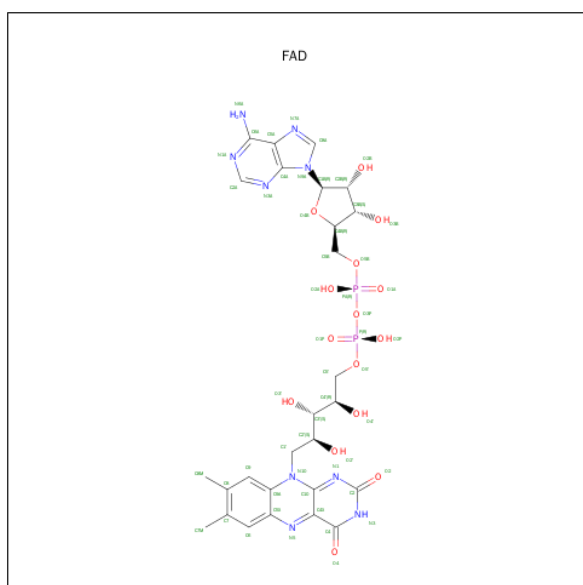
- Molecule 1 is a protein called Ribosyldihydronicotinamide dehydrogenase [quinone].

Mol	Chain	Residues	Atoms					ZeroOcc	AltConf	Trace
1	A	230	Total	C	N	O	S	0	0	0
			1824	1174	304	338	8			
1	B	230	Total	C	N	O	S	0	0	0
			1824	1174	304	338	8			

- Molecule 2 is ZINC ION (three-letter code: ZN) (formula: Zn).

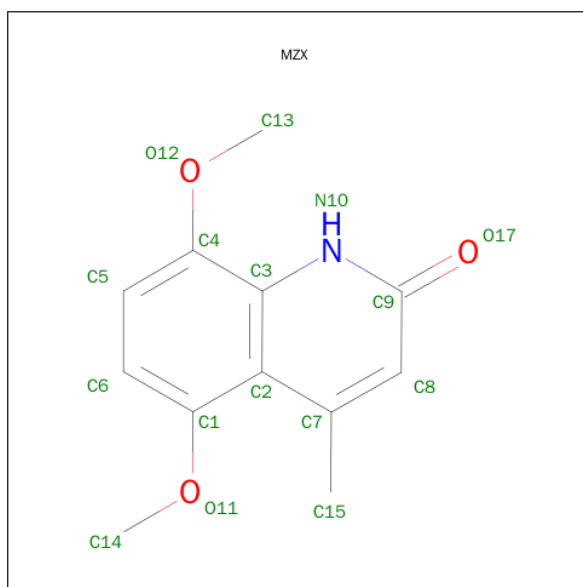
Mol	Chain	Residues	Atoms		ZeroOcc	AltConf
2	B	1	Total	Zn	0	0
			1	1		
2	A	1	Total	Zn	0	0
			1	1		

- Molecule 3 is FLAVIN-ADENINE DINUCLEOTIDE (three-letter code: FAD) (formula: C<sub>27</sub>H<sub>33</sub>N<sub>9</sub>O<sub>15</sub>P<sub>2</sub>).



Mol	Chain	Residues	Atoms					ZeroOcc	AltConf
3	A	1	Total	C	N	O	P	0	0
			53	27	9	15	2		
3	B	1	Total	C	N	O	P	0	0
			53	27	9	15	2		

- Molecule 4 is 5,8-DIMETHOXY-4-METHYLQUINOLIN-2(1H)-ONE (three-letter code: MZX) (formula: C<sub>12</sub>H<sub>13</sub>NO<sub>3</sub>).



Mol	Chain	Residues	Atoms				ZeroOcc	AltConf
4	B	1	Total	C	N	O	0	0
			16	12	1	3		
4	B	1	Total	C	N	O	0	0
			16	12	1	3		

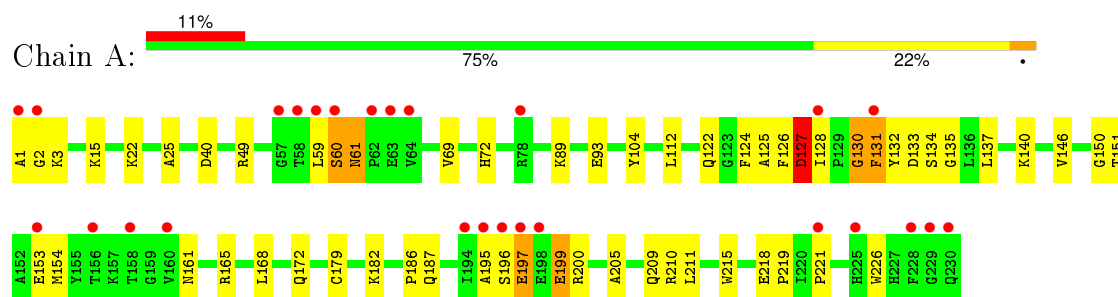
- Molecule 5 is water.

Mol	Chain	Residues	Atoms		ZeroOcc	AltConf
5	A	113	Total	O	0	0
			113	113		
5	B	152	Total	O	0	0
			152	152		

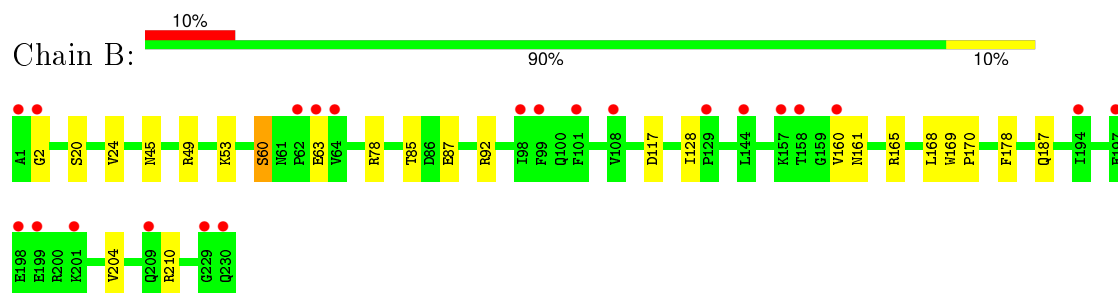
### 3 Residue-property plots

These plots are drawn for all protein, RNA and DNA chains in the entry. The first graphic for a chain summarises the proportions of errors displayed in the second graphic. The second graphic shows the sequence view annotated by issues in geometry and electron density. Residues are color-coded according to the number of geometric quality criteria for which they contain at least one outlier: green = 0, yellow = 1, orange = 2 and red = 3 or more. A red dot above a residue indicates a poor fit to the electron density ( $\text{RSRZ} > 2$ ). Stretches of 2 or more consecutive residues without any outlier are shown as a green connector. Residues present in the sample, but not in the model, are shown in grey.

- Molecule 1: Ribosyldihydronicotinamide dehydrogenase [quinone]



- Molecule 1: Ribosyldihydronicotinamide dehydrogenase [quinone]



## 4 Data and refinement statistics

Property	Value	Source
Space group	P 21 21 21	Depositor
Cell constants a, b, c, $\alpha$ , $\beta$ , $\gamma$	56.36Å 84.05Å 106.73Å 90.00° 90.00° 90.00°	Depositor
Resolution (Å)	50.00 – 1.78 25.92 – 1.78	Depositor EDS
% Data completeness (in resolution range)	92.6 (50.00-1.78) 92.6 (25.92-1.78)	Depositor EDS
$R_{merge}$	0.19	Depositor
$R_{sym}$	(Not available)	Depositor
$\langle I/\sigma(I) \rangle$ <sup>1</sup>	2.76 (at 1.78Å)	Xtriage
Refinement program	REFMAC 5.5.0102	Depositor
R, $R_{free}$	0.196 , 0.245 0.195 , 0.245	Depositor DCC
$R_{free}$ test set	2315 reflections (5.37%)	DCC
Wilson B-factor (Å <sup>2</sup> )	22.0	Xtriage
Anisotropy	0.487	Xtriage
Bulk solvent $k_{sol}$ (e/Å <sup>3</sup> ), $B_{sol}$ (Å <sup>2</sup> )	0.36 , 46.4	EDS
Estimated twinning fraction	No twinning to report.	Xtriage
L-test for twinning <sup>2</sup>	$\langle  L  \rangle = 0.49$ , $\langle L^2 \rangle = 0.33$	Xtriage
Outliers	1 of 45461 reflections (0.002%)	Xtriage
$F_o, F_c$ correlation	0.96	EDS
Total number of atoms	4053	wwPDB-VP
Average B, all atoms (Å <sup>2</sup> )	30.0	wwPDB-VP

Xtriage's analysis on translational NCS is as follows: *The largest off-origin peak in the Patterson function is 5.93% of the height of the origin peak. No significant pseudotranslation is detected.*

<sup>1</sup>Intensities estimated from amplitudes.

<sup>2</sup>Theoretical values of  $\langle |L| \rangle$ ,  $\langle L^2 \rangle$  for acentric reflections are 0.5, 0.375 respectively for untwinned datasets, and 0.333, 0.2 for perfectly twinned datasets.

## 5 Model quality ⓘ

### 5.1 Standard geometry ⓘ

Bond lengths and bond angles in the following residue types are not validated in this section: ZN, MZX, FAD

The Z score for a bond length (or angle) is the number of standard deviations the observed value is removed from the expected value. A bond length (or angle) with  $|Z| > 5$  is considered an outlier worth inspection. RMSZ is the root-mean-square of all Z scores of the bond lengths (or angles).

Mol	Chain	Bond lengths		Bond angles	
		RMSZ	$\# Z  > 5$	RMSZ	$\# Z  > 5$
1	A	1.15	1/1874 (0.1%)	1.01	6/2542 (0.2%)
1	B	1.20	2/1874 (0.1%)	1.00	5/2542 (0.2%)
All	All	1.17	3/3748 (0.1%)	1.01	11/5084 (0.2%)

All (3) bond length outliers are listed below:

Mol	Chain	Res	Type	Atoms	Z	Observed(Å)	Ideal(Å)
1	B	63	GLU	CG-CD	5.29	1.59	1.51
1	A	124	PHE	CE2-CZ	5.05	1.47	1.37
1	B	87	GLU	CD-OE2	5.01	1.31	1.25

All (11) bond angle outliers are listed below:

Mol	Chain	Res	Type	Atoms	Z	Observed(°)	Ideal(°)
1	A	112	LEU	CB-CG-CD2	-6.55	99.87	111.00
1	B	78	ARG	NE-CZ-NH2	-6.51	117.05	120.30
1	A	104	TYR	CB-CG-CD1	6.34	124.81	121.00
1	A	49	ARG	NE-CZ-NH1	6.10	123.35	120.30
1	B	117	ASP	CB-CG-OD1	6.07	123.77	118.30
1	A	146	VAL	CB-CA-C	-5.81	100.36	111.40
1	A	40	ASP	CB-CG-OD1	5.63	123.37	118.30
1	B	117	ASP	CB-CG-OD2	-5.47	113.38	118.30
1	A	127	ASP	CB-CG-OD1	-5.33	113.50	118.30
1	B	92	ARG	NE-CZ-NH1	5.31	122.96	120.30
1	B	49	ARG	NE-CZ-NH1	5.07	122.83	120.30

There are no chirality outliers.

There are no planarity outliers.

## 5.2 Too-close contacts ⓘ

In the following table, the Non-H and H(model) columns list the number of non-hydrogen atoms and hydrogen atoms in the chain respectively. The H(added) column lists the number of hydrogen atoms added and optimized by MolProbity. The Clashes column lists the number of clashes within the asymmetric unit, whereas Symm-Clashes lists symmetry related clashes.

Mol	Chain	Non-H	H(model)	H(added)	Clashes	Symm-Clashes
1	A	1824	0	1779	45	0
1	B	1824	0	1779	16	0
2	A	1	0	0	0	0
2	B	1	0	0	0	0
3	A	53	0	31	1	0
3	B	53	0	31	0	0
4	B	32	0	26	21	0
5	A	113	0	0	6	0
5	B	152	0	0	4	0
All	All	4053	0	3646	73	0

The all-atom clashscore is defined as the number of clashes found per 1000 atoms (including hydrogen atoms). The all-atom clashscore for this structure is 10.

All (73) close contacts within the same asymmetric unit are listed below, sorted by their clash magnitude.

Atom-1	Atom-2	Interatomic distance (Å)	Clash overlap (Å)
4:B:234:MZX:C13	4:B:234:MZX:HN10	1.31	1.41
1:B:161:ASN:HD21	4:B:234:MZX:C14	1.53	1.20
4:B:234:MZX:HN10	4:B:234:MZX:H13B	1.04	1.12
1:A:195:ALA:HB1	1:A:196:SER:HA	1.32	1.09
4:B:234:MZX:N10	4:B:234:MZX:C13	2.08	1.05
1:A:130:GLY:HA2	5:A:331:HOH:O	1.54	1.04
4:B:234:MZX:H13A	4:B:234:MZX:HN10	1.21	1.01
1:B:2:GLY:HA3	5:B:361:HOH:O	1.64	0.97
4:B:234:MZX:N10	4:B:234:MZX:H13B	1.75	0.94
1:A:195:ALA:CB	1:A:196:SER:HA	2.00	0.91
1:B:161:ASN:HD21	4:B:234:MZX:H14A	1.37	0.90
1:B:161:ASN:HD21	4:B:234:MZX:H14	1.38	0.89
1:A:195:ALA:HB1	1:A:196:SER:CA	2.03	0.88
1:B:161:ASN:ND2	4:B:234:MZX:C14	2.37	0.87
4:B:234:MZX:H14A	4:B:234:MZX:H15B	1.55	0.86
1:A:122:GLN:HE22	1:A:128:ILE:HB	1.43	0.83
1:A:161:ASN:HD21	4:B:233:MZX:H14	1.43	0.81
1:A:72:HIS:CE1	5:A:309:HOH:O	2.34	0.80

*Continued on next page...*

*Continued from previous page...*

Atom-1	Atom-2	Interatomic distance (Å)	Clash overlap (Å)
1:A:122:GLN:HE21	1:A:128:ILE:H	1.29	0.78
1:A:182:LYS:HE2	5:A:335:HOH:O	1.85	0.77
4:B:234:MZX:C15	4:B:234:MZX:C14	2.64	0.76
4:B:234:MZX:N10	4:B:234:MZX:H13A	1.86	0.76
1:A:122:GLN:HE21	1:A:128:ILE:N	1.84	0.75
4:B:234:MZX:C15	4:B:234:MZX:H14A	2.18	0.74
1:A:122:GLN:OE1	5:A:329:HOH:O	2.06	0.73
1:A:187:GLN:HE21	1:A:210:ARG:HH11	1.38	0.71
4:B:234:MZX:H15A	4:B:234:MZX:C14	2.21	0.70
1:B:161:ASN:ND2	4:B:234:MZX:H14	2.06	0.70
4:B:234:MZX:H15A	4:B:234:MZX:H14B	1.73	0.70
1:A:122:GLN:NE2	1:A:128:ILE:N	2.39	0.70
1:A:187:GLN:NE2	1:A:210:ARG:HH11	1.90	0.69
1:A:122:GLN:NE2	1:A:128:ILE:H	1.93	0.67
1:A:150:GLY:HA3	4:B:233:MZX:H14B	1.77	0.64
1:B:45:ASN:OD1	5:B:320:HOH:O	2.16	0.60
1:B:161:ASN:ND2	4:B:234:MZX:H14A	2.08	0.59
1:B:85:THR:HG21	5:B:265:HOH:O	2.03	0.58
1:A:187:GLN:HE21	1:A:210:ARG:NH1	2.01	0.58
4:B:234:MZX:H15B	4:B:234:MZX:C14	2.27	0.57
1:B:178:PHE:CE1	4:B:233:MZX:H15A	2.42	0.55
1:A:221:PRO:HD2	1:A:226:TRP:CD1	2.42	0.55
1:A:205:ALA:O	1:A:209:GLN:HG3	2.08	0.54
1:A:131:PHE:O	1:A:133:ASP:N	2.42	0.53
1:A:3:LYS:HD2	1:A:215:TRP:CZ3	2.44	0.53
1:A:127:ASP:H	1:A:130:GLY:HA3	1.73	0.53
1:A:196:SER:OG	1:A:199:GLU:HG3	2.09	0.52
1:A:172:GLN:HE22	1:A:186:PRO:HD3	1.73	0.52
1:A:151:THR:OG1	1:A:154:MET:HG3	2.10	0.52
1:B:187:GLN:HE21	1:B:210:ARG:HH11	1.59	0.51
1:A:133:ASP:HA	5:A:333:HOH:O	2.10	0.51
1:B:169:TRP:HB3	1:B:170:PRO:HD3	1.92	0.51
1:A:137:LEU:O	1:A:140:LYS:HG3	2.10	0.50
1:A:122:GLN:NE2	5:A:309:HOH:O	2.44	0.50
1:A:15:LYS:O	3:A:232:FAD:H8A	2.12	0.49
1:B:24:VAL:HG11	1:B:204:VAL:CG1	2.42	0.49
1:A:197:GLU:HG2	1:A:200:ARG:HH12	1.78	0.49
1:A:122:GLN:HE22	1:A:128:ILE:CB	2.20	0.48
1:A:59:LEU:C	1:A:61:ASN:H	2.15	0.48
1:A:122:GLN:HB2	1:A:126:PHE:CZ	2.50	0.47
1:A:122:GLN:NE2	1:A:128:ILE:HB	2.21	0.46

*Continued on next page...*

Continued from previous page...

Atom-1	Atom-2	Interatomic distance (Å)	Clash overlap (Å)
1:A:127:ASP:CA	1:A:130:GLY:HA3	2.45	0.46
1:A:127:ASP:N	1:A:130:GLY:HA3	2.31	0.46
1:A:89:LYS:HE2	1:A:93:GLU:OE2	2.18	0.44
1:A:60:SER:O	1:A:61:ASN:HB2	2.17	0.44
1:A:125:ALA:HB1	1:A:179:CYS:SG	2.57	0.44
1:A:25:ALA:HA	1:A:211:LEU:CD1	2.47	0.43
1:A:218:GLU:HA	1:A:219:PRO:HD2	1.88	0.42
1:A:165:ARG:HA	1:A:168:LEU:HD12	2.02	0.42
1:B:165:ARG:HA	1:B:168:LEU:HD12	2.02	0.42
1:B:20:SER:O	1:B:24:VAL:HG13	2.20	0.41
1:A:1:ALA:HA	1:A:2:GLY:HA2	1.87	0.41
1:B:60:SER:HB2	5:B:348:HOH:O	2.20	0.40
1:A:199:GLU:HG3	1:A:199:GLU:H	1.68	0.40
1:A:133:ASP:C	1:A:135:GLY:H	2.25	0.40

There are no symmetry-related clashes.

## 5.3 Torsion angles

### 5.3.1 Protein backbone

In the following table, the Percentiles column shows the percent Ramachandran outliers of the chain as a percentile score with respect to all X-ray entries followed by that with respect to entries of similar resolution.

The Analysed column shows the number of residues for which the backbone conformation was analysed, and the total number of residues.

Mol	Chain	Analysed	Favoured	Allowed	Outliers	Percentiles	
1	A	228/230 (99%)	213 (93%)	10 (4%)	5 (2%)	8	1
1	B	228/230 (99%)	221 (97%)	7 (3%)	0	100	100
All	All	456/460 (99%)	434 (95%)	17 (4%)	5 (1%)	17	4

All (5) Ramachandran outliers are listed below:

Mol	Chain	Res	Type
1	A	61	ASN
1	A	132	TYR
1	A	134	SER
1	A	60	SER

Continued on next page...

*Continued from previous page...*

Mol	Chain	Res	Type
1	A	130	GLY

### 5.3.2 Protein sidechains ⓘ

In the following table, the Percentiles column shows the percent sidechain outliers of the chain as a percentile score with respect to all X-ray entries followed by that with respect to entries of similar resolution.

The Analysed column shows the number of residues for which the sidechain conformation was analysed, and the total number of residues.

Mol	Chain	Analysed	Rotameric	Outliers	Percentiles	
1	A	194/194 (100%)	187 (96%)	7 (4%)	42	22
1	B	194/194 (100%)	190 (98%)	4 (2%)	61	44
All	All	388/388 (100%)	377 (97%)	11 (3%)	51	32

All (11) residues with a non-rotameric sidechain are listed below:

Mol	Chain	Res	Type
1	A	22	LYS
1	A	69	VAL
1	A	127	ASP
1	A	131	PHE
1	A	153	GLU
1	A	197	GLU
1	A	199	GLU
1	B	53	LYS
1	B	60	SER
1	B	128	ILE
1	B	160	VAL

Some sidechains can be flipped to improve hydrogen bonding and reduce clashes. All (11) such sidechains are listed below:

Mol	Chain	Res	Type
1	A	72	HIS
1	A	77	GLN
1	A	122	GLN
1	A	161	ASN
1	A	172	GLN
1	A	187	GLN

*Continued on next page...*

*Continued from previous page...*

Mol	Chain	Res	Type
1	A	212	GLN
1	B	45	ASN
1	B	161	ASN
1	B	172	GLN
1	B	187	GLN

### 5.3.3 RNA ⓘ

There are no RNA molecules in this entry.

## 5.4 Non-standard residues in protein, DNA, RNA chains ⓘ

There are no non-standard protein/DNA/RNA residues in this entry.

## 5.5 Carbohydrates ⓘ

There are no carbohydrates in this entry.

## 5.6 Ligand geometry ⓘ

Of 6 ligands modelled in this entry, 2 are monoatomic - leaving 4 for Mogul analysis.

In the following table, the Counts columns list the number of bonds (or angles) for which Mogul statistics could be retrieved, the number of bonds (or angles) that are observed in the model and the number of bonds (or angles) that are defined in the chemical component dictionary. The Link column lists molecule types, if any, to which the group is linked. The Z score for a bond length (or angle) is the number of standard deviations the observed value is removed from the expected value. A bond length (or angle) with  $|Z| > 2$  is considered an outlier worth inspection. RMSZ is the root-mean-square of all Z scores of the bond lengths (or angles).

Mol	Type	Chain	Res	Link	Bond lengths			Bond angles		
					Counts	RMSZ	$\# Z  > 2$	Counts	RMSZ	$\# Z  > 2$
3	FAD	A	232	-	48,58,58	1.74	9 (18%)	54,89,89	2.56	12 (22%)
3	FAD	B	231	-	48,58,58	1.72	12 (25%)	54,89,89	2.92	15 (27%)
4	MZX	B	233	-	16,17,17	1.43	2 (12%)	17,24,24	3.17	7 (41%)
4	MZX	B	234	-	16,17,17	1.49	3 (18%)	17,24,24	5.20	12 (70%)

In the following table, the Chirals column lists the number of chiral outliers, the number of chiral centers analysed, the number of these observed in the model and the number defined in the chemical component dictionary. Similar counts are reported in the Torsion and Rings columns. '-' means

no outliers of that kind were identified.

Mol	Type	Chain	Res	Link	Chirals	Torsions	Rings
3	FAD	A	232	-	-	0/30/50/50	0/6/6/6
3	FAD	B	231	-	-	0/30/50/50	0/6/6/6
4	MZX	B	233	-	-	0/4/4/4	0/2/2/2
4	MZX	B	234	-	-	4/4/4/4	0/2/2/2

All (26) bond length outliers are listed below:

Mol	Chain	Res	Type	Atoms	Z	Observed(Å)	Ideal(Å)
4	B	233	MZX	C4-C3	-3.36	1.38	1.42
3	B	231	FAD	C4X-C10	-3.12	1.35	1.41
3	B	231	FAD	C9-C9A	-2.52	1.35	1.40
4	B	234	MZX	C2-C3	-2.43	1.37	1.42
4	B	234	MZX	C4-C3	-2.38	1.39	1.42
3	B	231	FAD	C9A-C5X	-2.37	1.37	1.42
3	B	231	FAD	P-O1P	-2.09	1.43	1.51
3	B	231	FAD	C10-N10	-2.03	1.36	1.39
3	A	232	FAD	C2A-N1A	2.18	1.38	1.33
3	B	231	FAD	C2A-N1A	2.19	1.38	1.33
3	B	231	FAD	C9A-N10	2.47	1.42	1.38
3	A	232	FAD	C1'-N10	2.47	1.51	1.48
3	A	232	FAD	C5'-C4'	2.70	1.55	1.51
3	A	232	FAD	C6-C5X	2.72	1.45	1.41
3	B	231	FAD	C4'-C3'	2.86	1.59	1.53
4	B	233	MZX	C7-C2	2.96	1.49	1.44
3	A	232	FAD	C2A-N3A	3.00	1.37	1.32
3	A	232	FAD	C9A-N10	3.53	1.43	1.38
3	B	231	FAD	C10-N1	3.58	1.41	1.35
4	B	234	MZX	C7-C2	4.00	1.51	1.44
3	B	231	FAD	C2A-N3A	4.13	1.39	1.32
3	A	232	FAD	C4-N3	4.25	1.41	1.33
3	B	231	FAD	C4-N3	4.32	1.41	1.33
3	A	232	FAD	C10-N1	4.46	1.43	1.35
3	B	231	FAD	C4X-N5	4.64	1.40	1.33
3	A	232	FAD	C4X-N5	5.35	1.41	1.33

All (46) bond angle outliers are listed below:

Mol	Chain	Res	Type	Atoms	Z	Observed(°)	Ideal(°)
3	B	231	FAD	N3A-C2A-N1A	-15.43	117.08	128.89
3	A	232	FAD	N3A-C2A-N1A	-13.16	118.82	128.89
4	B	234	MZX	O11-C1-C6	-9.02	108.61	124.15

*Continued on next page...*

*Continued from previous page...*

Mol	Chain	Res	Type	Atoms	Z	Observed(°)	Ideal(°)
3	B	231	FAD	P-O3P-PA	-5.40	117.57	132.73
4	B	233	MZX	C15-C7-C8	-5.18	113.11	120.81
3	B	231	FAD	C4B-O4B-C1B	-4.83	104.41	109.72
3	A	232	FAD	C1B-N9A-C4A	-4.64	119.94	126.94
3	B	231	FAD	C4X-C4-N3	-3.89	118.27	123.59
3	A	232	FAD	P-O3P-PA	-3.71	122.30	132.73
3	B	231	FAD	O4'-C4'-C5'	-3.68	102.18	110.19
3	A	232	FAD	C4X-C4-N3	-3.57	118.70	123.59
4	B	233	MZX	C4-C3-N10	-2.90	116.51	119.44
3	A	232	FAD	O3P-P-O5'	-2.64	95.94	102.94
4	B	233	MZX	C8-C9-N10	-2.62	120.88	124.05
4	B	234	MZX	C6-C5-C4	-2.58	114.39	120.44
3	B	231	FAD	O3P-PA-O5B	-2.55	96.18	102.94
4	B	234	MZX	C15-C7-C2	-2.53	118.71	124.25
4	B	234	MZX	C8-C9-N10	-2.44	121.09	124.05
3	A	232	FAD	O3P-PA-O5B	-2.32	96.77	102.94
3	A	232	FAD	O4'-C4'-C5'	-2.24	105.30	110.19
3	A	232	FAD	C7-C6-C5X	-2.20	117.33	120.92
3	B	231	FAD	C1B-N9A-C4A	-2.19	123.63	126.94
3	B	231	FAD	O5B-PA-O1A	-2.13	101.36	109.62
4	B	234	MZX	O12-C4-C5	-2.12	120.49	124.15
4	B	234	MZX	C4-C3-N10	-2.06	117.36	119.44
4	B	234	MZX	C13-O12-C4	-2.03	114.80	117.77
3	B	231	FAD	C4-C4X-N5	2.07	121.23	118.72
3	B	231	FAD	C4-C4X-C10	2.07	121.27	119.94
3	B	231	FAD	O4B-C1B-N9A	2.14	112.58	108.10
4	B	234	MZX	C5-C4-C3	2.14	122.99	120.15
3	B	231	FAD	C1'-N10-C9A	2.30	121.44	118.86
3	A	232	FAD	O2'-C2'-C3'	2.50	115.30	109.02
3	A	232	FAD	O2A-PA-O3P	2.73	117.49	105.09
3	B	231	FAD	C4X-N5-C5X	3.00	120.22	116.76
3	A	232	FAD	C4X-N5-C5X	3.61	120.92	116.76
4	B	233	MZX	C4-C3-C2	3.71	121.80	118.96
4	B	234	MZX	C4-C3-C2	4.25	122.22	118.96
4	B	233	MZX	C9-N10-C3	4.70	122.17	116.76
3	B	231	FAD	C4X-C10-N10	5.59	123.81	120.52
4	B	233	MZX	C14-O11-C1	5.68	126.08	117.77
3	B	231	FAD	C4-N3-C2	5.91	120.35	115.25
3	A	232	FAD	C4-N3-C2	6.47	120.84	115.25
4	B	233	MZX	C13-O12-C4	6.96	127.95	117.77
4	B	234	MZX	C9-N10-C3	7.18	125.02	116.76
4	B	234	MZX	O11-C1-C2	9.91	131.53	115.89

*Continued on next page...*

*Continued from previous page...*

Mol	Chain	Res	Type	Atoms	Z	Observed(°)	Ideal(°)
4	B	234	MZX	C14-O11-C1	12.91	136.66	117.77

There are no chirality outliers.

All (4) torsion outliers are listed below:

Mol	Chain	Res	Type	Atoms
4	B	234	MZX	C14-O11-C1-C2
4	B	234	MZX	C14-O11-C1-C6
4	B	234	MZX	C13-O12-C4-C5
4	B	234	MZX	C13-O12-C4-C3

There are no ring outliers.

3 monomers are involved in 22 short contacts:

Mol	Chain	Res	Type	Clashes	Symm-Clashes
3	A	232	FAD	1	0
4	B	233	MZX	3	0
4	B	234	MZX	18	0

## 5.7 Other polymers [i](#)

There are no such residues in this entry.

## 5.8 Polymer linkage issues [i](#)

There are no chain breaks in this entry.

## 6 Fit of model and data ⓘ

### 6.1 Protein, DNA and RNA chains ⓘ

In the following table, the column labelled ‘#RSRZ> 2’ contains the number (and percentage) of RSRZ outliers, followed by percent RSRZ outliers for the chain as percentile scores relative to all X-ray entries and entries of similar resolution. The OWAB column contains the minimum, median, 95<sup>th</sup> percentile and maximum values of the occupancy-weighted average B-factor per residue. The column labelled ‘Q< 0.9’ lists the number of (and percentage) of residues with an average occupancy less than 0.9.

Mol	Chain	Analysed	<RSRZ>	#RSRZ>2	OWAB(Å <sup>2</sup> )	Q<0.9
1	A	230/230 (100%)	0.78	26 (11%) 7 6	14, 31, 56, 70	0
1	B	230/230 (100%)	0.48	22 (9%) 10 9	13, 24, 45, 60	0
All	All	460/460 (100%)	0.63	48 (10%) 8 8	13, 27, 51, 70	0

All (48) RSRZ outliers are listed below:

Mol	Chain	Res	Type	RSRZ
1	A	229	GLY	7.7
1	B	230	GLN	7.1
1	B	1	ALA	6.6
1	B	2	GLY	5.5
1	A	1	ALA	5.3
1	B	63	GLU	5.2
1	A	131	PHE	4.8
1	A	230	GLN	4.6
1	A	2	GLY	4.6
1	A	63	GLU	4.3
1	A	195	ALA	4.1
1	B	194	ILE	4.1
1	B	157	LYS	3.9
1	A	59	LEU	3.8
1	A	198	GLU	3.8
1	A	58	THR	3.7
1	B	64	VAL	3.6
1	B	198	GLU	3.6
1	A	194	ILE	3.6
1	A	158	THR	3.6
1	A	197	GLU	3.6
1	A	228	PHE	3.5
1	B	158	THR	3.4
1	A	225	HIS	3.2

*Continued on next page...*

*Continued from previous page...*

Mol	Chain	Res	Type	RSRZ
1	A	196	SER	3.2
1	B	160	VAL	3.0
1	A	62	PRO	2.8
1	B	99	PHE	2.7
1	A	160	VAL	2.6
1	A	60	SER	2.5
1	A	128	ILE	2.5
1	B	101	PHE	2.5
1	B	62	PRO	2.5
1	A	57	GLY	2.4
1	A	221	PRO	2.4
1	A	153	GLU	2.4
1	B	199	GLU	2.4
1	A	64	VAL	2.4
1	B	197	GLU	2.3
1	B	209	GLN	2.3
1	B	129	PRO	2.3
1	B	229	GLY	2.3
1	B	144	LEU	2.3
1	B	98	ILE	2.3
1	B	108	VAL	2.2
1	A	156	THR	2.1
1	A	78	ARG	2.1
1	B	201	LYS	2.0

## 6.2 Non-standard residues in protein, DNA, RNA chains [i](#)

There are no non-standard protein/DNA/RNA residues in this entry.

## 6.3 Carbohydrates [i](#)

There are no carbohydrates in this entry.

## 6.4 Ligands [i](#)

In the following table, the Atoms column lists the number of modelled atoms in the group and the number defined in the chemical component dictionary. LLDF column lists the quality of electron density of the group with respect to its neighbouring residues in protein, DNA or RNA chains. The B-factors column lists the minimum, median, 95<sup>th</sup> percentile and maximum values of B factors of atoms in the group. The column labelled 'Q < 0.9' lists the number of atoms with occupancy less than 0.9.

Mol	Type	Chain	Res	Atoms	RSCC	RSR	LLDF	B-factors( $\text{\AA}^2$ )	Q<0.9
4	MZX	B	234	16/16	0.90	0.14	0.91	31,34,37,39	0
4	MZX	B	233	16/16	0.90	0.14	0.54	33,40,48,49	0
3	FAD	A	232	53/53	0.92	0.13	-0.09	15,27,63,64	0
3	FAD	B	231	53/53	0.93	0.12	-0.26	17,23,41,44	0
2	ZN	B	232	1/1	1.00	0.03	-3.00	27,27,27,27	0
2	ZN	A	231	1/1	0.97	0.04	-3.87	40,40,40,40	0

## 6.5 Other polymers [i](#)

There are no such residues in this entry.