



Full wwPDB X-ray Structure Validation Report ⓘ

Feb 1, 2016 – 10:55 AM GMT

PDB ID : 3NKS
Title : Structure of human protoporphyrinogen IX oxidase
Authors : Shen, Y.
Deposited on : 2010-06-21
Resolution : 1.90 Å(reported)

This is a Full wwPDB X-ray Structure Validation Report for a publicly released PDB entry.
We welcome your comments at validation@mail.wwpdb.org
A user guide is available at
<http://wwpdb.org/validation/2016/XrayValidationReportHelp>
with specific help available everywhere you see the ⓘ symbol.

The following versions of software and data (see [references ⓘ](#)) were used in the production of this report:

MolProbity : 4.02b-467
Mogul : 1.7 (RC4), CSD as536be (2015)
Xtriage (Phenix) : 1.9-1692
EDS : rb-20026688
Percentile statistics : 20151230.v01 (using entries in the PDB archive December 30th 2015)
Refmac : 5.8.0135
CCP4 : 6.5.0
Ideal geometry (proteins) : Engh & Huber (2001)
Ideal geometry (DNA, RNA) : Parkinson et al. (1996)
Validation Pipeline (wwPDB-VP) : trunk26865

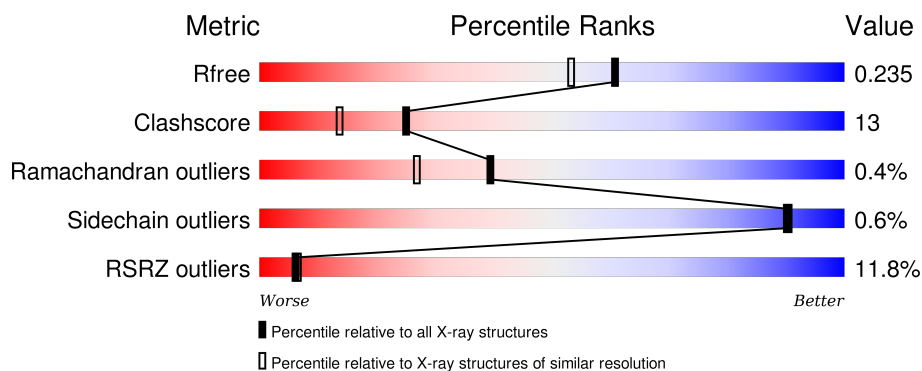
1 Overall quality at a glance

The following experimental techniques were used to determine the structure:

X-RAY DIFFRACTION


The reported resolution of this entry is 1.90 Å.

Percentile scores (ranging between 0-100) for global validation metrics of the entry are shown in the following graphic. The table shows the number of entries on which the scores are based.



Metric	Whole archive (#Entries)	Similar resolution (#Entries, resolution range(Å))
R_{free}	91344	4755 (1.90-1.90)
Clashscore	102246	5398 (1.90-1.90)
Ramachandran outliers	100387	5338 (1.90-1.90)
Sidechain outliers	100360	5339 (1.90-1.90)
RSRZ outliers	91569	4766 (1.90-1.90)

The table below summarises the geometric issues observed across the polymeric chains and their fit to the electron density. The red, orange, yellow and green segments on the lower bar indicate the fraction of residues that contain outliers for ≥ 3 , 2, 1 and 0 types of geometric quality criteria. A grey segment represents the fraction of residues that are not modelled. The numeric value for each fraction is indicated below the corresponding segment, with a dot representing fractions $\leq 5\%$. The upper red bar (where present) indicates the fraction of residues that have poor fit to the electron density. The numeric value is given above the bar.

Mol	Chain	Length	Quality of chain
1	A	477	

The following table lists non-polymeric compounds, carbohydrate monomers and non-standard residues in protein, DNA, RNA chains that are outliers for geometric or electron-density-fit criteria:

Mol	Type	Chain	Res	Chirality	Geometry	Clashes	Electron density
3	FAD	A	479	-	-	-	X

Continued on next page...

Continued from previous page...

Mol	Type	Chain	Res	Chirality	Geometry	Clashes	Electron density
4	GOL	A	968	-	-	-	X
4	GOL	A	969	-	-	-	X

2 Entry composition [i](#)

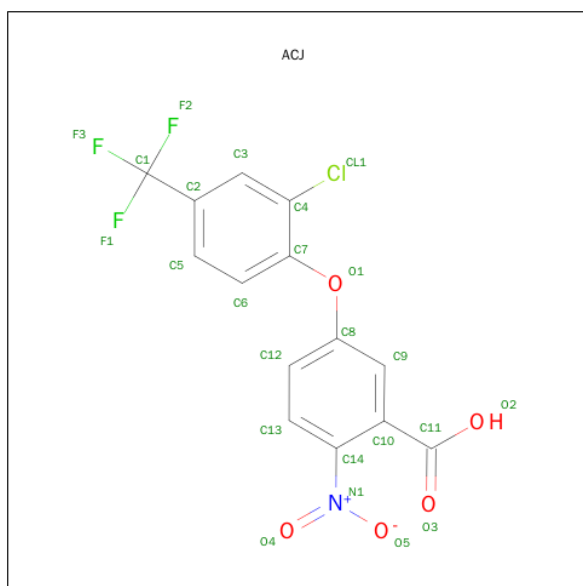
There are 5 unique types of molecules in this entry. The entry contains 3818 atoms, of which 0 are hydrogens and 0 are deuteriums.

In the tables below, the ZeroOcc column contains the number of atoms modelled with zero occupancy, the AltConf column contains the number of residues with at least one atom in alternate conformation and the Trace column contains the number of residues modelled with at most 2 atoms.

- Molecule 1 is a protein called Protoporphyrinogen oxidase.

Mol	Chain	Residues	Atoms					ZeroOcc	AltConf	Trace
1	A	465	Total	C	N	O	S	0	0	0
			3460	2185	628	635	12			

- Molecule 2 is 5-[2-CHLORO-4-(TRIFLUOROMETHYL)PHENOXY]-2-NITROBENZOIC ACID (three-letter code: ACJ) (formula: $C_{14}H_7ClF_3NO_5$).



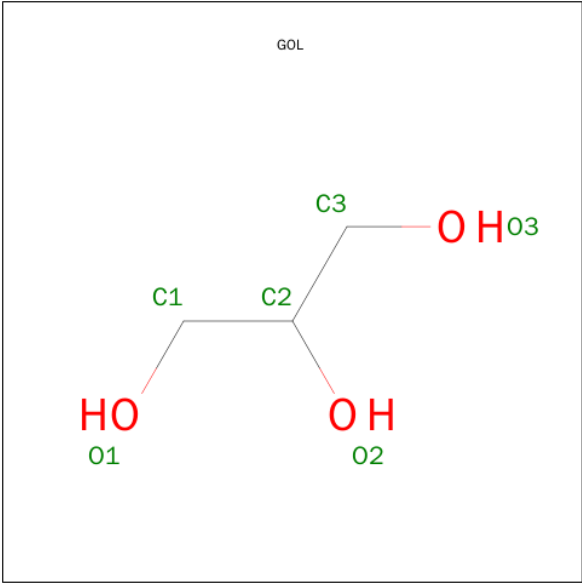
Mol	Chain	Residues	Atoms					ZeroOcc	AltConf
2	A	1	Total	C	Cl	F	N	O	
			24	14	1	3	1	5	0

- Molecule 3 is FLAVIN-ADENINE DINUCLEOTIDE (three-letter code: FAD) (formula: $C_{27}H_{33}N_9O_{15}P_2$).



Mol	Chain	Residues	Atoms					ZeroOcc	AltConf
3	A	1	Total	C	N	O	P	0	0
			53	27	9	15	2		

- Molecule 4 is GLYCEROL (three-letter code: GOL) (formula: C₃H₈O₃).



Mol	Chain	Residues	Atoms			ZeroOcc	AltConf
4	A	1	Total	C	O	0	0
			6	3	3		
4	A	1	Total	C	O	0	0
			6	3	3		

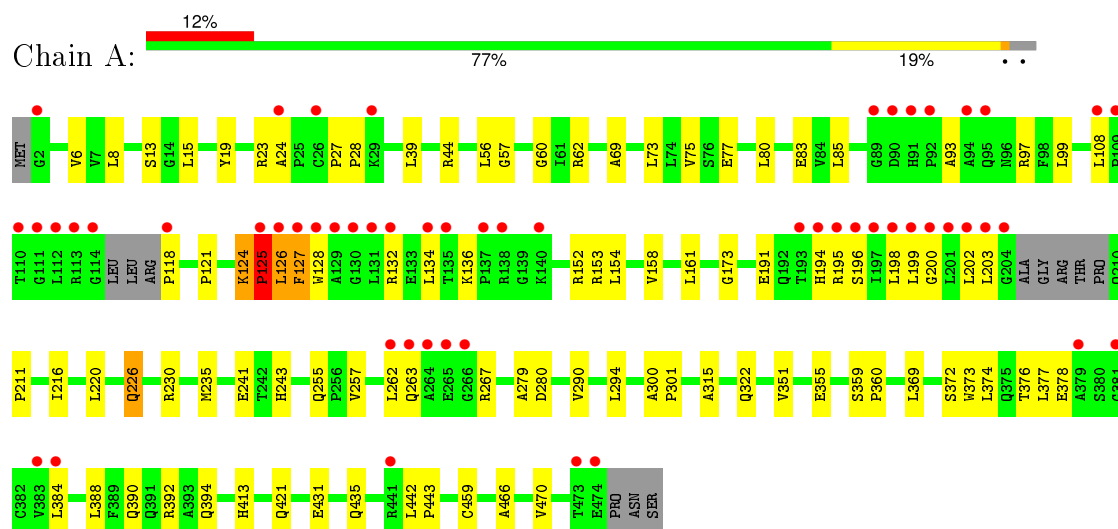
- Molecule 5 is water.

Mol	Chain	Residues	Atoms		ZeroOcc	AltConf
5	A	269	Total 269	O 269	0	0

3 Residue-property plots [i](#)

These plots are drawn for all protein, RNA and DNA chains in the entry. The first graphic for a chain summarises the proportions of errors displayed in the second graphic. The second graphic shows the sequence view annotated by issues in geometry and electron density. Residues are color-coded according to the number of geometric quality criteria for which they contain at least one outlier: green = 0, yellow = 1, orange = 2 and red = 3 or more. A red dot above a residue indicates a poor fit to the electron density ($\text{RSRZ} > 2$). Stretches of 2 or more consecutive residues without any outlier are shown as a green connector. Residues present in the sample, but not in the model, are shown in grey.

- Molecule 1: Protoporphyrinogen oxidase



4 Data and refinement statistics

Property	Value	Source
Space group	H 3 2	Depositor
Cell constants a, b, c, α , β , γ	136.70Å 136.70Å 158.88Å 90.00° 90.00° 120.00°	Depositor
Resolution (Å)	29.71 – 1.90 38.99 – 1.90	Depositor EDS
% Data completeness (in resolution range)	94.4 (29.71-1.90) 94.5 (38.99-1.90)	Depositor EDS
R_{merge}	0.09	Depositor
R_{sym}	0.09	Depositor
$\langle I/\sigma(I) \rangle$ ¹	3.80 (at 1.89Å)	Xtriage
Refinement program	CNS 1.2	Depositor
R, R_{free}	0.206 , 0.232 0.209 , 0.235	Depositor DCC
R_{free} test set	2210 reflections (5.48%)	DCC
Wilson B-factor (Å ²)	24.9	Xtriage
Anisotropy	0.329	Xtriage
Bulk solvent k_{sol} (e/Å ³), B_{sol} (Å ²)	0.34 , 58.6	EDS
Estimated twinning fraction	0.024 for -2/3*h-1/3*k+2/3*l,-1/3*h-2/3*k-2/3*l,2/3*h-2/3*k+1/3*l 0.017 for -h,1/3*h-1/3*k+2/3*l,2/3*h+4/3*k+1/3*l 0.006 for -1/3*h+1/3*k-2/3*l,-k,-4/3*h-2/3*k+1/3*l	Xtriage
L-test for twinning ²	$\langle L \rangle = 0.49$, $\langle L^2 \rangle = 0.32$	Xtriage
Outliers	0 of 44210 reflections	Xtriage
F_o, F_c correlation	0.95	EDS
Total number of atoms	3818	wwPDB-VP
Average B, all atoms (Å ²)	34.0	wwPDB-VP

Xtriage's analysis on translational NCS is as follows: *The largest off-origin peak in the Patterson function is 5.04% of the height of the origin peak. No significant pseudotranslation is detected.*

¹ Intensities estimated from amplitudes.

² Theoretical values of $\langle |L| \rangle$, $\langle L^2 \rangle$ for acentric reflections are 0.5, 0.375 respectively for untwinned datasets, and 0.333, 0.2 for perfectly twinned datasets.

5 Model quality [i](#)

5.1 Standard geometry [i](#)

Bond lengths and bond angles in the following residue types are not validated in this section: GOL, FAD, ACJ

The Z score for a bond length (or angle) is the number of standard deviations the observed value is removed from the expected value. A bond length (or angle) with $|Z| > 5$ is considered an outlier worth inspection. RMSZ is the root-mean-square of all Z scores of the bond lengths (or angles).

Mol	Chain	Bond lengths		Bond angles	
		RMSZ	$\# Z > 5$	RMSZ	$\# Z > 5$
1	A	0.32	0/3534	0.60	5/4807 (0.1%)

There are no bond length outliers.

All (5) bond angle outliers are listed below:

Mol	Chain	Res	Type	Atoms	Z	Observed($^{\circ}$)	Ideal($^{\circ}$)
1	A	126	LEU	CA-CB-CG	-6.78	99.70	115.30
1	A	125	PRO	N-CA-C	6.74	129.63	112.10
1	A	124	LYS	C-N-CD	6.15	141.31	128.40
1	A	127	PHE	N-CA-C	-5.54	96.04	111.00
1	A	118	PRO	N-CA-CB	5.50	109.89	103.30

There are no chirality outliers.

There are no planarity outliers.

5.2 Too-close contacts [i](#)

In the following table, the Non-H and H(model) columns list the number of non-hydrogen atoms and hydrogen atoms in the chain respectively. The H(added) column lists the number of hydrogen atoms added and optimized by MolProbity. The Clashes column lists the number of clashes within the asymmetric unit, whereas Symm-Clashes lists symmetry related clashes.

Mol	Chain	Non-H	H(model)	H(added)	Clashes	Symm-Clashes
1	A	3460	0	3474	89	0
2	A	24	0	6	0	0
3	A	53	0	31	2	0
4	A	12	0	16	0	0
5	A	269	0	0	6	0
All	All	3818	0	3527	90	0

The all-atom clashscore is defined as the number of clashes found per 1000 atoms (including hydrogen atoms). The all-atom clashscore for this structure is 13.

All (90) close contacts within the same asymmetric unit are listed below, sorted by their clash magnitude.

Atom-1	Atom-2	Interatomic distance (Å)	Clash overlap (Å)
1:A:99:LEU:HG	1:A:108:LEU:HD11	1.49	0.94
1:A:125:PRO:HB3	1:A:128:TRP:CD1	2.16	0.81
1:A:263:GLN:NE2	1:A:267:ARG:HB2	1.97	0.80
1:A:125:PRO:HB3	1:A:128:TRP:HB2	1.67	0.77
1:A:125:PRO:HG2	1:A:126:LEU:H	1.53	0.73
1:A:125:PRO:CB	1:A:128:TRP:HB2	2.21	0.69
1:A:263:GLN:HE21	1:A:267:ARG:HB2	1.56	0.69
1:A:125:PRO:HB3	1:A:128:TRP:HD1	1.55	0.69
1:A:8:LEU:HD22	1:A:257:VAL:HG21	1.73	0.69
1:A:196:SER:HB3	1:A:199:LEU:HB3	1.74	0.69
1:A:373:TRP:O	1:A:377:LEU:HD13	1.95	0.66
1:A:388:LEU:HD12	5:A:648:HOH:O	1.97	0.65
1:A:125:PRO:O	1:A:126:LEU:HB2	1.96	0.64
1:A:93:ALA:HB2	1:A:351:VAL:HG12	1.78	0.64
1:A:153:ARG:NH1	1:A:153:ARG:HB3	2.13	0.63
1:A:125:PRO:CG	1:A:126:LEU:H	2.09	0.63
1:A:127:PHE:HD2	1:A:128:TRP:CD2	2.17	0.63
1:A:194:HIS:O	1:A:195:ARG:HB2	1.99	0.62
1:A:57:GLY:HA2	3:A:479:FAD:HM72	1.80	0.62
1:A:24:ALA:O	1:A:27:PRO:HG3	2.00	0.61
1:A:373:TRP:CZ2	1:A:392:ARG:HD2	2.36	0.60
1:A:125:PRO:CB	1:A:128:TRP:CD1	2.85	0.59
1:A:125:PRO:CB	1:A:128:TRP:HD1	2.15	0.59
1:A:290:VAL:O	1:A:294:LEU:HD13	2.02	0.58
1:A:83:GLU:HG2	1:A:235:MET:SD	2.44	0.58
1:A:373:TRP:CH2	1:A:392:ARG:HD2	2.39	0.57
1:A:173:GLY:HA3	1:A:421:GLN:HE22	1.70	0.56
1:A:125:PRO:HB3	1:A:128:TRP:CB	2.35	0.56
1:A:390:GLN:O	1:A:394:GLN:HG3	2.06	0.55
1:A:62:ARG:HD2	5:A:550:HOH:O	2.09	0.52
1:A:262:LEU:HD11	1:A:442:LEU:HD22	1.91	0.52
1:A:372:SER:O	1:A:376:THR:HG23	2.09	0.52
1:A:191:GLU:O	1:A:195:ARG:HA	2.09	0.52
1:A:216:ILE:O	1:A:220:LEU:HD13	2.10	0.52
1:A:39:LEU:HD12	1:A:241:GLU:HG3	1.92	0.51
1:A:199:LEU:O	1:A:199:LEU:HD23	2.10	0.51
1:A:198:LEU:O	1:A:202:LEU:HG	2.11	0.51

Continued on next page...

Continued from previous page...

Atom-1	Atom-2	Interatomic distance (Å)	Clash overlap (Å)
1:A:136:LYS:HE2	1:A:152:ARG:O	2.10	0.51
1:A:132:ARG:HG3	1:A:132:ARG:HH11	1.75	0.51
1:A:15:LEU:HD21	1:A:39:LEU:HD13	1.93	0.51
1:A:39:LEU:HD12	1:A:241:GLU:CG	2.42	0.49
1:A:359:SER:HA	1:A:360:PRO:C	2.32	0.49
1:A:125:PRO:HB2	1:A:128:TRP:N	2.28	0.49
1:A:413:HIS:HD2	5:A:549:HOH:O	1.96	0.49
1:A:374:LEU:O	1:A:378:GLU:HG3	2.13	0.48
1:A:153:ARG:HH11	1:A:153:ARG:HB3	1.78	0.48
1:A:125:PRO:HB3	1:A:128:TRP:CG	2.47	0.48
1:A:154:LEU:HD13	1:A:158:VAL:HG11	1.95	0.48
1:A:194:HIS:CD2	1:A:200:GLY:HA2	2.49	0.48
1:A:39:LEU:HD12	1:A:241:GLU:CD	2.34	0.48
1:A:127:PHE:HE2	1:A:128:TRP:CZ3	2.32	0.48
1:A:44:ARG:HD3	1:A:56:LEU:HD12	1.96	0.48
1:A:377:LEU:HB3	1:A:384:LEU:HD21	1.96	0.47
1:A:390:GLN:NE2	5:A:647:HOH:O	2.47	0.47
1:A:153:ARG:NE	1:A:191:GLU:HG3	2.30	0.47
1:A:466:ALA:O	1:A:470:VAL:HG23	2.15	0.46
1:A:6:VAL:HG23	1:A:279:ALA:HB2	1.98	0.46
1:A:134:LEU:HD23	1:A:196:SER:OG	2.16	0.46
1:A:27:PRO:HA	1:A:28:PRO:HD3	1.80	0.46
1:A:125:PRO:C	1:A:127:PHE:H	2.17	0.46
1:A:13:SER:OG	1:A:459:CYS:HB3	2.16	0.46
1:A:300:ALA:HB3	1:A:301:PRO:HD3	1.98	0.45
1:A:431:GLU:O	1:A:435:GLN:HG3	2.17	0.45
1:A:125:PRO:CG	1:A:126:LEU:N	2.78	0.45
1:A:136:LYS:HG2	1:A:153:ARG:HA	1.99	0.45
1:A:73:LEU:O	1:A:77:GLU:HG3	2.16	0.45
1:A:60:GLY:HA3	1:A:226:GLN:NE2	2.32	0.45
1:A:378:GLU:HG2	1:A:384:LEU:HD11	1.98	0.44
1:A:392:ARG:HH11	1:A:392:ARG:HG2	1.81	0.44
1:A:243:HIS:HB3	5:A:613:HOH:O	2.16	0.44
1:A:194:HIS:ND1	1:A:203:LEU:HD12	2.33	0.44
1:A:75:VAL:HG13	1:A:80:LEU:HB2	2.00	0.44
1:A:315:ALA:HB3	1:A:369:LEU:HB2	1.99	0.44
1:A:125:PRO:HB2	1:A:128:TRP:H	1.83	0.43
1:A:255:GLN:NE2	5:A:614:HOH:O	2.51	0.43
1:A:97:ARG:HG3	1:A:97:ARG:HH11	1.83	0.43
1:A:125:PRO:CB	1:A:128:TRP:CB	2.93	0.43
1:A:121:PRO:HG2	1:A:161:LEU:HD13	2.00	0.43

Continued on next page...

Continued from previous page...

Atom-1	Atom-2	Interatomic distance (Å)	Clash overlap (Å)
1:A:267:ARG:HD3	1:A:280:ASP:OD1	2.19	0.42
1:A:19:TYR:CZ	1:A:23:ARG:HD3	2.54	0.42
1:A:85:LEU:HD11	1:A:230:ARG:HA	2.02	0.42
1:A:134:LEU:HD22	1:A:199:LEU:HB2	2.02	0.41
1:A:442:LEU:HA	1:A:443:PRO:HD3	1.82	0.41
3:A:479:FAD:H9	3:A:479:FAD:H1'1	1.87	0.41
1:A:69:ALA:HB3	1:A:211:PRO:HD2	2.03	0.41
1:A:132:ARG:NH1	1:A:132:ARG:HG3	2.36	0.40
1:A:125:PRO:O	1:A:126:LEU:CB	2.67	0.40
1:A:322:GLN:HE22	1:A:360:PRO:HB2	1.86	0.40
1:A:6:VAL:CG2	1:A:279:ALA:HB2	2.52	0.40
1:A:355:GLU:CD	1:A:355:GLU:H	2.24	0.40

There are no symmetry-related clashes.

5.3 Torsion angles [i](#)

5.3.1 Protein backbone [i](#)

In the following table, the Percentiles column shows the percent Ramachandran outliers of the chain as a percentile score with respect to all X-ray entries followed by that with respect to entries of similar resolution.

The Analysed column shows the number of residues for which the backbone conformation was analysed, and the total number of residues.

Mol	Chain	Analysed	Favoured	Allowed	Outliers	Percentiles	
1	A	459/477 (96%)	435 (95%)	22 (5%)	2 (0%)	39	27

All (2) Ramachandran outliers are listed below:

Mol	Chain	Res	Type
1	A	125	PRO
1	A	124	LYS

5.3.2 Protein sidechains [i](#)

In the following table, the Percentiles column shows the percent sidechain outliers of the chain as a percentile score with respect to all X-ray entries followed by that with respect to entries of similar resolution.

The Analysed column shows the number of residues for which the sidechain conformation was analysed, and the total number of residues.

Mol	Chain	Analysed	Rotameric	Outliers	Percentiles	
1	A	363/380 (96%)	361 (99%)	2 (1%)	90	90

All (2) residues with a non-rotameric sidechain are listed below:

Mol	Chain	Res	Type
1	A	125	PRO
1	A	226	GLN

Some sidechains can be flipped to improve hydrogen bonding and reduce clashes. All (10) such sidechains are listed below:

Mol	Chain	Res	Type
1	A	226	GLN
1	A	238	GLN
1	A	243	HIS
1	A	255	GLN
1	A	263	GLN
1	A	318	ASN
1	A	390	GLN
1	A	394	GLN
1	A	413	HIS
1	A	421	GLN

5.3.3 RNA [i](#)

There are no RNA molecules in this entry.

5.4 Non-standard residues in protein, DNA, RNA chains [i](#)

There are no non-standard protein/DNA/RNA residues in this entry.

5.5 Carbohydrates [i](#)

There are no carbohydrates in this entry.

5.6 Ligand geometry [i](#)

4 ligands are modelled in this entry.

In the following table, the Counts columns list the number of bonds (or angles) for which Mogul statistics could be retrieved, the number of bonds (or angles) that are observed in the model and the number of bonds (or angles) that are defined in the chemical component dictionary. The Link column lists molecule types, if any, to which the group is linked. The Z score for a bond length (or angle) is the number of standard deviations the observed value is removed from the expected value. A bond length (or angle) with $|Z| > 2$ is considered an outlier worth inspection. RMSZ is the root-mean-square of all Z scores of the bond lengths (or angles).

Mol	Type	Chain	Res	Link	Bond lengths			Bond angles		
					Counts	RMSZ	# Z > 2	Counts	RMSZ	# Z > 2
2	ACJ	A	478	-	20,25,25	2.98	4 (20%)	28,37,37	1.06	1 (3%)
3	FAD	A	479	-	48,58,58	1.22	6 (12%)	54,89,89	2.35	9 (16%)
4	GOL	A	968	-	5,5,5	0.25	0	5,5,5	0.20	0
4	GOL	A	969	-	5,5,5	0.35	0	5,5,5	0.22	0

In the following table, the Chirals column lists the number of chiral outliers, the number of chiral centers analysed, the number of these observed in the model and the number defined in the chemical component dictionary. Similar counts are reported in the Torsion and Rings columns. '-' means no outliers of that kind were identified.

Mol	Type	Chain	Res	Link	Chirals	Torsions	Rings
2	ACJ	A	478	-	-	0/13/18/18	0/2/2/2
3	FAD	A	479	-	-	0/30/50/50	0/6/6/6
4	GOL	A	968	-	-	0/4/4/4	0/0/0/0
4	GOL	A	969	-	-	0/4/4/4	0/0/0/0

All (10) bond length outliers are listed below:

Mol	Chain	Res	Type	Atoms	Z	Observed(Å)	Ideal(Å)
2	A	478	ACJ	C4-CL1	2.27	1.79	1.73
3	A	479	FAD	C10-N1	2.42	1.39	1.35
3	A	479	FAD	C2A-N1A	2.48	1.38	1.33
3	A	479	FAD	C4-N3	2.64	1.38	1.33
3	A	479	FAD	C1'-N10	2.67	1.51	1.48
3	A	479	FAD	C4X-N5	3.34	1.38	1.33
3	A	479	FAD	C2A-N3A	3.77	1.38	1.32
2	A	478	ACJ	C7-C4	5.31	1.49	1.39
2	A	478	ACJ	C10-C14	8.10	1.50	1.40
2	A	478	ACJ	O4-N1	8.50	1.39	1.22

All (10) bond angle outliers are listed below:

Mol	Chain	Res	Type	Atoms	Z	Observed(°)	Ideal(°)
3	A	479	FAD	N3A-C2A-N1A	-12.56	119.27	128.89

Continued on next page...

Continued from previous page...

Mol	Chain	Res	Type	Atoms	Z	Observed(°)	Ideal(°)
3	A	479	FAD	C4X-C4-N3	-3.56	118.72	123.59
3	A	479	FAD	C4X-C10-N10	-2.37	119.12	120.52
3	A	479	FAD	C9A-C5X-N5	-2.06	119.30	122.36
3	A	479	FAD	C8M-C8-C9	-2.02	114.79	120.28
2	A	478	ACJ	C3-C4-CL1	2.28	122.02	118.50
3	A	479	FAD	O4B-C1B-N9A	2.58	113.51	108.10
3	A	479	FAD	C4X-N5-C5X	3.41	120.68	116.76
3	A	479	FAD	C5X-C9A-N10	3.98	120.64	117.62
3	A	479	FAD	C4-N3-C2	6.81	121.13	115.25

There are no chirality outliers.

There are no torsion outliers.

There are no ring outliers.

1 monomer is involved in 2 short contacts:

Mol	Chain	Res	Type	Clashes	Symm-Clashes
3	A	479	FAD	2	0

5.7 Other polymers [i](#)

There are no such residues in this entry.

5.8 Polymer linkage issues [i](#)

There are no chain breaks in this entry.

6 Fit of model and data ⓘ

6.1 Protein, DNA and RNA chains ⓘ

In the following table, the column labelled ‘#RSRZ> 2’ contains the number (and percentage) of RSRZ outliers, followed by percent RSRZ outliers for the chain as percentile scores relative to all X-ray entries and entries of similar resolution. The OWAB column contains the minimum, median, 95th percentile and maximum values of the occupancy-weighted average B-factor per residue. The column labelled ‘Q< 0.9’ lists the number of (and percentage) of residues with an average occupancy less than 0.9.

Mol	Chain	Analysed	<RSRZ>	#RSRZ>2	OWAB(Å ²)	Q<0.9
1	A	465/477 (97%)	0.62	55 (11%) 6 6	16, 30, 64, 83	0

All (55) RSRZ outliers are listed below:

Mol	Chain	Res	Type	RSRZ
1	A	2	GLY	9.2
1	A	126	LEU	9.2
1	A	128	TRP	8.4
1	A	202	LEU	8.0
1	A	127	PHE	7.8
1	A	112	LEU	7.1
1	A	199	LEU	7.1
1	A	201	LEU	6.8
1	A	204	GLY	6.8
1	A	203	LEU	6.4
1	A	111	GLY	6.3
1	A	381	GLY	5.4
1	A	110	THR	5.3
1	A	383	VAL	5.3
1	A	265	GLU	4.8
1	A	473	THR	4.6
1	A	94	ALA	4.5
1	A	384	LEU	4.4
1	A	129	ALA	4.3
1	A	109	PRO	4.2
1	A	137	PRO	4.2
1	A	134	LEU	4.0
1	A	198	LEU	4.0
1	A	131	LEU	3.8
1	A	197	ILE	3.7
1	A	125	PRO	3.7
1	A	379	ALA	3.6

Continued on next page...

Continued from previous page...

Mol	Chain	Res	Type	RSRZ
1	A	95	GLN	3.6
1	A	195	ARG	3.6
1	A	200	GLY	3.4
1	A	264	ALA	3.0
1	A	91	HIS	3.0
1	A	441	ARG	2.9
1	A	132	ARG	2.8
1	A	474	GLU	2.7
1	A	135	THR	2.7
1	A	263	GLN	2.6
1	A	108	LEU	2.6
1	A	26	CYS	2.5
1	A	89	GLY	2.5
1	A	138	ARG	2.5
1	A	194	HIS	2.5
1	A	266	GLY	2.5
1	A	90	ASP	2.4
1	A	193	THR	2.4
1	A	140	LYS	2.4
1	A	196	SER	2.4
1	A	113	ARG	2.3
1	A	114	GLY	2.2
1	A	118	PRO	2.2
1	A	262	LEU	2.1
1	A	24	ALA	2.1
1	A	29	LYS	2.0
1	A	92	PRO	2.0
1	A	130	GLY	2.0

6.2 Non-standard residues in protein, DNA, RNA chains [i](#)

There are no non-standard protein/DNA/RNA residues in this entry.

6.3 Carbohydrates [i](#)

There are no carbohydrates in this entry.

6.4 Ligands [i](#)

In the following table, the Atoms column lists the number of modelled atoms in the group and the number defined in the chemical component dictionary. LLDF column lists the quality of electron

density of the group with respect to its neighbouring residues in protein, DNA or RNA chains. The B-factors column lists the minimum, median, 95th percentile and maximum values of B factors of atoms in the group. The column labelled 'Q< 0.9' lists the number of atoms with occupancy less than 0.9.

Mol	Type	Chain	Res	Atoms	RSCC	RSR	LLDF	B-factors(Å ²)	Q<0.9
4	GOL	A	968	6/6	0.75	0.39	11.27	69,70,70,70	0
4	GOL	A	969	6/6	0.48	0.26	5.71	47,48,49,50	0
3	FAD	A	479	53/53	0.91	0.16	2.05	15,20,27,34	0
2	ACJ	A	478	24/24	0.84	0.16	1.82	4,26,35,38	0

6.5 Other polymers

There are no such residues in this entry.