



# Full wwPDB X-ray Structure Validation Report ⓘ

Feb 1, 2016 – 10:56 AM GMT

PDB ID : 3NLJ  
Title : Structure of neuronal nitric oxide synthase D597N/M336V/Y706A triple mutant heme domain complexed with 6-{{(3'R,4'R)-3'-[2''-(3'''-fluorophenethylamino)ethoxy] pyrrolidin-4'-yl}methyl}-4-methylpyridin-2-amine  
Authors : Delker, S.L.; Li, H.; Poulos, T.L.  
Deposited on : 2010-06-21  
Resolution : 2.20 Å(reported)

This is a Full wwPDB X-ray Structure Validation Report for a publicly released PDB entry.  
We welcome your comments at [validation@mail.wwpdb.org](mailto:validation@mail.wwpdb.org)  
A user guide is available at  
<http://wwpdb.org/validation/2016/XrayValidationReportHelp>  
with specific help available everywhere you see the ⓘ symbol.

---

The following versions of software and data (see [references ⓘ](#)) were used in the production of this report:

MolProbity : 4.02b-467  
Mogul : 1.7 (RC4), CSD as536be (2015)  
Xtriage (Phenix) : 1.9-1692  
EDS : rb-20026688  
Percentile statistics : 20151230.v01 (using entries in the PDB archive December 30th 2015)  
Refmac : 5.8.0135  
CCP4 : 6.5.0  
Ideal geometry (proteins) : Engh & Huber (2001)  
Ideal geometry (DNA, RNA) : Parkinson et al. (1996)  
Validation Pipeline (wwPDB-VP) : trunk26865

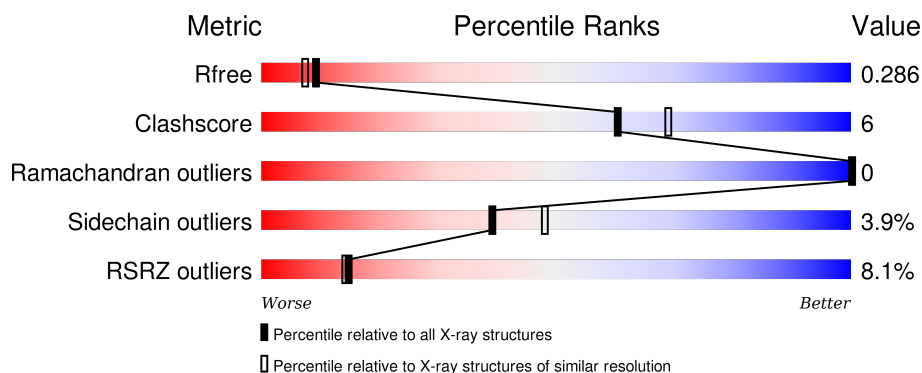
# 1 Overall quality at a glance

The following experimental techniques were used to determine the structure:

## *X-RAY DIFFRACTION*

The reported resolution of this entry is 2.20 Å.

Percentile scores (ranging between 0-100) for global validation metrics of the entry are shown in the following graphic. The table shows the number of entries on which the scores are based.



Metric	Whole archive (#Entries)	Similar resolution (#Entries, resolution range(Å))
$R_{free}$	91344	3774 (2.20-2.20)
Clashscore	102246	4477 (2.20-2.20)
Ramachandran outliers	100387	4404 (2.20-2.20)
Sidechain outliers	100360	4405 (2.20-2.20)
RSRZ outliers	91569	3781 (2.20-2.20)

The table below summarises the geometric issues observed across the polymeric chains and their fit to the electron density. The red, orange, yellow and green segments on the lower bar indicate the fraction of residues that contain outliers for  $\geq 3$ , 2, 1 and 0 types of geometric quality criteria. A grey segment represents the fraction of residues that are not modelled. The numeric value for each fraction is indicated below the corresponding segment, with a dot representing fractions  $\leq 5\%$ . The upper red bar (where present) indicates the fraction of residues that have poor fit to the electron density. The numeric value is given above the bar.

Mol	Chain	Length	Quality of chain
1	A	422	
1	B	422	

The following table lists non-polymeric compounds, carbohydrate monomers and non-standard residues in protein, DNA, RNA chains that are outliers for geometric or electron-density-fit criteria:

Mol	Type	Chain	Res	Chirality	Geometry	Clashes	Electron density
5	ACT	A	860	-	-	-	X
5	ACT	B	861	-	-	-	X

## 2 Entry composition [i](#)

There are 6 unique types of molecules in this entry. The entry contains 7050 atoms, of which 0 are hydrogens and 0 are deuteriums.

In the tables below, the ZeroOcc column contains the number of atoms modelled with zero occupancy, the AltConf column contains the number of residues with at least one atom in alternate conformation and the Trace column contains the number of residues modelled with at most 2 atoms.

- Molecule 1 is a protein called Nitric oxide synthase, brain.

Mol	Chain	Residues	Atoms					ZeroOcc	AltConf	Trace
1	A	407	Total	C	N	O	S	0	0	0
			3305	2115	567	603	20			
1	B	411	Total	C	N	O	S	0	0	0
			3337	2134	575	608	20			

There are 6 discrepancies between the modelled and reference sequences:

Chain	Residue	Modelled	Actual	Comment	Reference
A	336	VAL	MET	ENGINEERED MUTATION	UNP P29476
A	597	ASN	ASP	ENGINEERED MUTATION	UNP P29476
A	706	ALA	TYR	ENGINEERED MUTATION	UNP P29476
B	336	VAL	MET	ENGINEERED MUTATION	UNP P29476
B	597	ASN	ASP	ENGINEERED MUTATION	UNP P29476
B	706	ALA	TYR	ENGINEERED MUTATION	UNP P29476

- Molecule 2 is PROTOPORPHYRIN IX CONTAINING FE (three-letter code: HEM) (formula:  $C_{34}H_{32}FeN_4O_4$ ).



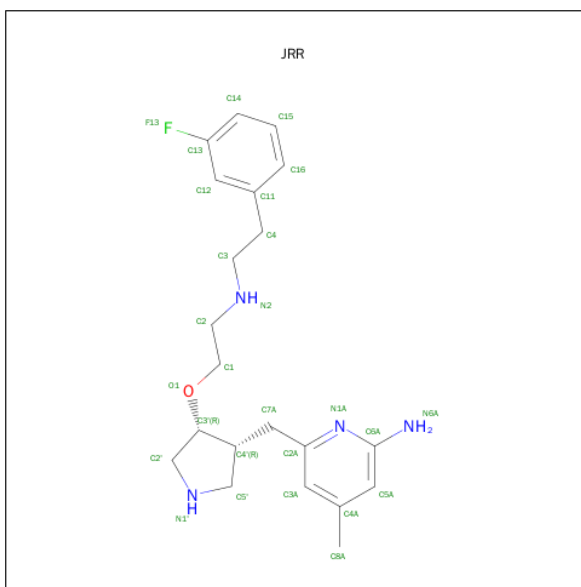
Mol	Chain	Residues	Atoms				ZeroOcc	AltConf
2	A	1	Total	C	Fe	N	O	
			43	34	1	4	4	
2	B	1	Total	C	Fe	N	O	
			43	34	1	4	4	

- Molecule 3 is 5,6,7,8-TETRAHYDROBIOPTERIN (three-letter code: H4B) (formula:  $C_9H_{15}N_5O_3$ ).



Mol	Chain	Residues	Atoms				ZeroOcc	AltConf
3	A	1	Total	C	N	O		
			17	9	5	3		
3	B	1	Total	C	N	O		
			17	9	5	3		

- Molecule 4 is 6-[[[(3R,4R)-4-(2-{[2-(3-FLUOROPHENYL)ETHYL]AMINO}ETHOXY)PYRROLIDIN-3-YL]METHYL]-4-METHYLPYRIDIN-2-AMINE (three-letter code: JRR) (formula:  $C_{21}H_{29}FN_4O$ ).



Mol	Chain	Residues	Atoms					ZeroOcc	AltConf
4	A	1	Total	C	F	N	O	0	0
			27	21	1	4	1		
4	B	1	Total	C	F	N	O	0	0
			27	21	1	4	1		

- Molecule 5 is ACETATE ION (three-letter code: ACT) (formula:  $C_2H_3O_2$ ).



Mol	Chain	Residues	Atoms			ZeroOcc	AltConf
5	A	1	Total	C	O	0	0
			4	2	2		
5	B	1	Total	C	O	0	0
			4	2	2		

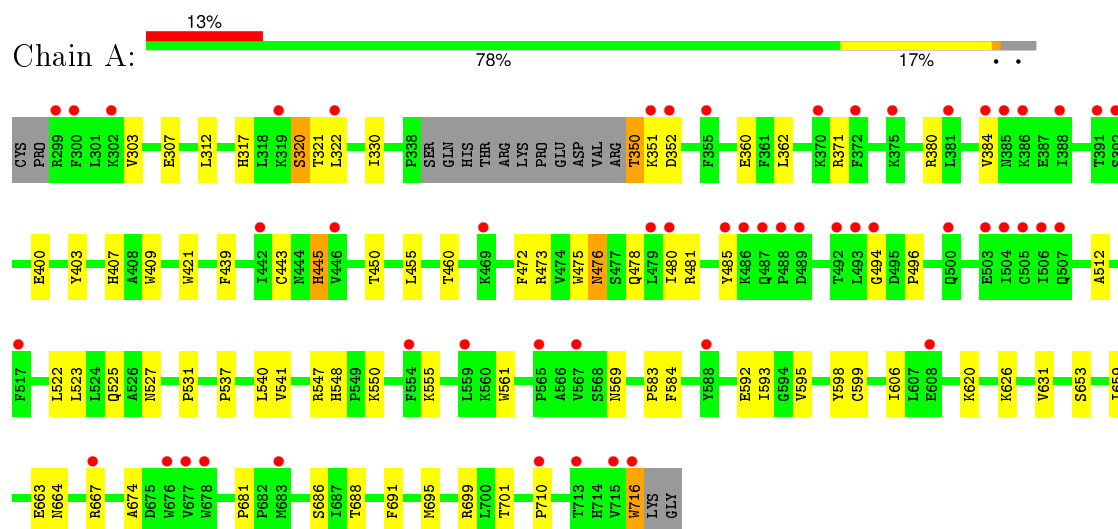
- Molecule 6 is water.

Mol	Chain	Residues	Atoms		ZeroOcc	AltConf
6	A	89	Total 89	O 89	0	0
6	B	137	Total 137	O 137	0	0

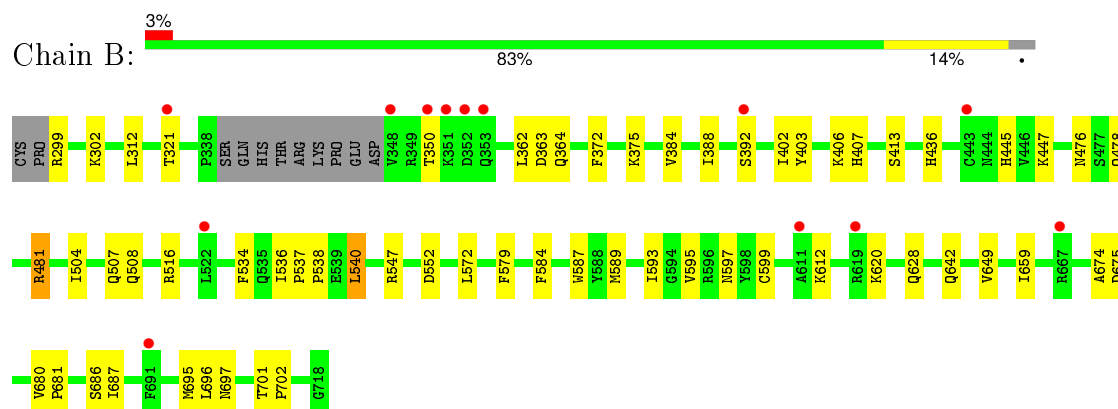
### 3 Residue-property plots

These plots are drawn for all protein, RNA and DNA chains in the entry. The first graphic for a chain summarises the proportions of errors displayed in the second graphic. The second graphic shows the sequence view annotated by issues in geometry and electron density. Residues are color-coded according to the number of geometric quality criteria for which they contain at least one outlier: green = 0, yellow = 1, orange = 2 and red = 3 or more. A red dot above a residue indicates a poor fit to the electron density ( $RSRZ > 2$ ). Stretches of 2 or more consecutive residues without any outlier are shown as a green connector. Residues present in the sample, but not in the model, are shown in grey.

- Molecule 1: Nitric oxide synthase, brain



- Molecule 1: Nitric oxide synthase, brain





## 4 Data and refinement statistics

Property	Value	Source
Space group	P 21 21 21	Depositor
Cell constants a, b, c, $\alpha$ , $\beta$ , $\gamma$	51.80Å 111.10Å 163.87Å 90.00° 90.00° 90.00°	Depositor
Resolution (Å)	40.97 – 2.20 40.97 – 2.20	Depositor EDS
% Data completeness (in resolution range)	98.7 (40.97-2.20) 98.6 (40.97-2.20)	Depositor EDS
$R_{merge}$	0.07	Depositor
$R_{sym}$	0.07	Depositor
$\langle I/\sigma(I) \rangle$ <sup>1</sup>	2.42 (at 2.20Å)	Xtriage
Refinement program	REFMAC 5.5.0089	Depositor
R, $R_{free}$	0.201 , 0.268 0.233 , 0.286	Depositor DCC
$R_{free}$ test set	2423 reflections (5.29%)	DCC
Wilson B-factor (Å <sup>2</sup> )	38.6	Xtriage
Anisotropy	0.713	Xtriage
Bulk solvent $k_{sol}$ (e/Å <sup>3</sup> ), $B_{sol}$ (Å <sup>2</sup> )	0.35 , 45.4	EDS
Estimated twinning fraction	No twinning to report.	Xtriage
L-test for twinning <sup>2</sup>	$\langle  L  \rangle = 0.49$ , $\langle L^2 \rangle = 0.32$	Xtriage
Outliers	0 of 48226 reflections	Xtriage
$F_o, F_c$ correlation	0.94	EDS
Total number of atoms	7050	wwPDB-VP
Average B, all atoms (Å <sup>2</sup> )	49.0	wwPDB-VP

Xtriage's analysis on translational NCS is as follows: *The largest off-origin peak in the Patterson function is 5.67% of the height of the origin peak. No significant pseudotranslation is detected.*

<sup>1</sup>Intensities estimated from amplitudes.

<sup>2</sup>Theoretical values of  $\langle |L| \rangle$ ,  $\langle L^2 \rangle$  for acentric reflections are 0.5, 0.375 respectively for untwinned datasets, and 0.333, 0.2 for perfectly twinned datasets.

## 5 Model quality [i](#)

### 5.1 Standard geometry [i](#)

Bond lengths and bond angles in the following residue types are not validated in this section: HEM, ACT, JRR, H4B

The Z score for a bond length (or angle) is the number of standard deviations the observed value is removed from the expected value. A bond length (or angle) with  $|Z| > 5$  is considered an outlier worth inspection. RMSZ is the root-mean-square of all Z scores of the bond lengths (or angles).

Mol	Chain	Bond lengths		Bond angles	
		RMSZ	$\# Z  > 5$	RMSZ	$\# Z  > 5$
1	A	0.61	0/3397	0.67	0/4610
1	B	0.73	0/3429	0.74	1/4650 (0.0%)
All	All	0.67	0/6826	0.71	1/9260 (0.0%)

There are no bond length outliers.

All (1) bond angle outliers are listed below:

Mol	Chain	Res	Type	Atoms	Z	Observed(°)	Ideal(°)
1	B	675	ASP	CB-CG-OD1	5.22	123.00	118.30

There are no chirality outliers.

There are no planarity outliers.

### 5.2 Too-close contacts [i](#)

In the following table, the Non-H and H(model) columns list the number of non-hydrogen atoms and hydrogen atoms in the chain respectively. The H(added) column lists the number of hydrogen atoms added and optimized by MolProbity. The Clashes column lists the number of clashes within the asymmetric unit, whereas Symm-Clashes lists symmetry related clashes.

Mol	Chain	Non-H	H(model)	H(added)	Clashes	Symm-Clashes
1	A	3305	0	3221	40	0
1	B	3337	0	3259	32	0
2	A	43	0	30	7	0
2	B	43	0	30	3	0
3	A	17	0	15	0	0
3	B	17	0	15	0	0
4	A	27	0	29	1	0
4	B	27	0	29	0	0

*Continued on next page...*

*Continued from previous page...*

Mol	Chain	Non-H	H(model)	H(added)	Clashes	Symm-Clashes
5	A	4	0	3	0	0
5	B	4	0	3	0	0
6	A	89	0	0	1	0
6	B	137	0	0	7	0
All	All	7050	0	6634	75	0

The all-atom clashscore is defined as the number of clashes found per 1000 atoms (including hydrogen atoms). The all-atom clashscore for this structure is 6.

All (75) close contacts within the same asymmetric unit are listed below, sorted by their clash magnitude.

Atom-1	Atom-2	Interatomic distance (Å)	Clash overlap (Å)
1:B:299:ARG:HB3	6:B:1131:HOH:O	1.65	0.96
2:A:750:HEM:HBB2	2:A:750:HEM:HHC	1.72	0.72
2:A:750:HEM:HMC2	2:A:750:HEM:HBC2	1.69	0.72
1:B:504:ILE:O	1:B:508:GLN:HG2	1.94	0.67
1:B:536:ILE:HG13	6:B:1031:HOH:O	1.95	0.66
1:A:317:HIS:O	1:A:320:SER:HB3	1.96	0.65
1:B:388:ILE:O	1:B:392:SER:HA	1.98	0.64
1:B:478:GLN:HB2	1:B:481:ARG:HG3	1.82	0.60
1:A:592:GLU:OE1	4:A:800:JRR:H16	2.03	0.59
1:B:572:LEU:HB3	1:B:579:PHE:HB2	1.84	0.58
1:A:701:THR:HG23	6:A:1079:HOH:O	2.04	0.57
1:A:380:ARG:HD3	1:A:400:GLU:OE1	2.06	0.56
1:A:659:ILE:O	1:A:663:GLU:HG3	2.07	0.55
1:B:447:LYS:HE2	6:B:1137:HOH:O	2.05	0.55
1:A:674:ALA:HB3	1:A:695:MET:HB3	1.88	0.54
1:A:595:VAL:O	1:A:599:CYS:HB2	2.08	0.54
1:B:589:MET:HA	1:B:649:VAL:O	2.07	0.54
1:A:664:ASN:OD1	1:A:667:ARG:NH2	2.39	0.53
1:B:447:LYS:HD2	1:B:540:LEU:HD11	1.91	0.52
1:B:363:ASP:HB3	1:B:372:PHE:HE1	1.74	0.52
2:A:750:HEM:CMC	2:A:750:HEM:HBC2	2.36	0.52
1:B:321:THR:N	6:B:1132:HOH:O	2.38	0.52
1:B:701:THR:HA	1:B:702:PRO:C	2.29	0.52
1:A:476:ASN:HD21	1:A:522:LEU:HA	1.75	0.52
1:A:681:PRO:HG2	1:A:688:THR:HG21	1.92	0.51
1:B:584:PHE:CD1	2:B:750:HEM:HAC	2.46	0.51
1:B:436:HIS:CD2	1:B:534:PHE:HE2	2.29	0.50
1:A:686:SER:HA	1:A:691:PHE:CG	2.46	0.50
1:A:716:TRP:N	1:A:716:TRP:CD1	2.79	0.50

*Continued on next page...*

*Continued from previous page...*

Atom-1	Atom-2	Interatomic distance (Å)	Clash overlap (Å)
1:A:307:GLU:HG3	6:B:1004:HOH:O	2.11	0.50
1:A:475:TRP:CZ2	1:A:531:PRO:HG3	2.46	0.50
1:B:587:TRP:H	2:B:750:HEM:HAB	1.77	0.49
1:B:642:GLN:HA	6:B:1129:HOH:O	2.12	0.49
1:A:631:VAL:HG11	1:B:628:GLN:HG2	1.93	0.49
1:A:460:THR:O	1:A:583:PRO:HD2	2.12	0.49
1:A:439:PHE:HZ	1:A:537:PRO:HD3	1.78	0.48
1:A:548:HIS:CE1	1:A:550:LYS:HB2	2.48	0.48
1:B:445:HIS:C	1:B:445:HIS:CD2	2.87	0.48
1:B:362:LEU:HD11	1:B:384:VAL:HG21	1.95	0.48
1:A:494:GLY:O	1:A:496:PRO:HD3	2.14	0.48
1:B:403:TYR:CE1	1:B:407:HIS:CE1	3.02	0.47
1:B:364:GLN:NE2	6:B:1090:HOH:O	2.47	0.47
1:B:595:VAL:O	1:B:599:CYS:HB2	2.16	0.46
1:A:445:HIS:C	1:A:445:HIS:CD2	2.89	0.46
1:A:480:ILE:HD13	1:A:541:VAL:HG13	1.98	0.46
1:A:561:TRP:CD1	1:A:593:ILE:HG12	2.50	0.46
1:B:593:ILE:HA	1:B:597:ASN:HB2	1.98	0.45
1:A:450:THR:HA	1:A:455:LEU:HD22	1.96	0.45
1:A:409:TRP:CE3	1:A:421:TRP:HA	2.52	0.45
1:A:303:VAL:HG23	1:A:312:LEU:HB2	1.98	0.45
1:A:485:TYR:HE2	1:A:512:ALA:HB1	1.82	0.45
1:B:413:SER:OG	1:B:697:ASN:ND2	2.50	0.45
1:A:523:LEU:HD22	1:A:531:PRO:HB2	1.98	0.45
1:B:680:VAL:HA	1:B:681:PRO:HD3	1.84	0.45
1:A:537:PRO:HB2	1:A:540:LEU:HG	1.98	0.45
1:A:322:LEU:HB2	1:A:699:ARG:HB2	2.00	0.45
1:A:439:PHE:CZ	1:A:443:CYS:SG	3.10	0.44
1:B:674:ALA:HB3	1:B:695:MET:HB3	1.99	0.43
1:A:403:TYR:CE1	1:A:407:HIS:CE1	3.07	0.43
2:A:750:HEM:HBA1	2:A:750:HEM:HHA	2.01	0.43
1:B:537:PRO:HA	1:B:538:PRO:HD3	1.92	0.43
1:A:362:LEU:HD11	1:A:384:VAL:HG21	2.02	0.42
1:A:350:THR:HG22	1:A:351:LYS:H	1.84	0.42
1:A:478:GLN:HB2	1:A:481:ARG:HG3	2.02	0.42
1:B:302:LYS:HA	1:B:312:LEU:O	2.20	0.42
1:A:472:PHE:HA	1:A:525:GLN:O	2.20	0.42
1:A:598:TYR:O	1:A:606:ILE:HG12	2.19	0.42
1:A:626:LYS:HB3	1:B:687:ILE:HD12	2.02	0.41
2:A:750:HEM:HBA1	2:A:750:HEM:CHA	2.50	0.41
1:B:584:PHE:CD1	2:B:750:HEM:CAC	3.03	0.41

*Continued on next page...*

*Continued from previous page...*

Atom-1	Atom-2	Interatomic distance (Å)	Clash overlap (Å)
1:A:584:PHE:CD1	2:A:750:HEM:CAC	3.04	0.41
2:A:750:HEM:CBA	2:A:750:HEM:HHA	2.51	0.40
1:B:402:ILE:O	1:B:406:LYS:HG3	2.21	0.40
1:A:330:ILE:HD11	1:B:696:LEU:HB3	2.04	0.40
1:A:473:ARG:CZ	1:A:710:PRO:HG3	2.52	0.40

There are no symmetry-related clashes.

## 5.3 Torsion angles [i](#)

### 5.3.1 Protein backbone [i](#)

In the following table, the Percentiles column shows the percent Ramachandran outliers of the chain as a percentile score with respect to all X-ray entries followed by that with respect to entries of similar resolution.

The Analysed column shows the number of residues for which the backbone conformation was analysed, and the total number of residues.

Mol	Chain	Analysed	Favoured	Allowed	Outliers	Percentiles	
1	A	403/422 (96%)	391 (97%)	12 (3%)	0	100	100
1	B	407/422 (96%)	394 (97%)	13 (3%)	0	100	100
All	All	810/844 (96%)	785 (97%)	25 (3%)	0	100	100

There are no Ramachandran outliers to report.

### 5.3.2 Protein sidechains [i](#)

In the following table, the Percentiles column shows the percent sidechain outliers of the chain as a percentile score with respect to all X-ray entries followed by that with respect to entries of similar resolution.

The Analysed column shows the number of residues for which the sidechain conformation was analysed, and the total number of residues.

Mol	Chain	Analysed	Rotameric	Outliers	Percentiles	
1	A	362/376 (96%)	347 (96%)	15 (4%)	37	45
1	B	365/376 (97%)	352 (96%)	13 (4%)	42	52
All	All	727/752 (97%)	699 (96%)	28 (4%)	39	48

All (28) residues with a non-rotameric sidechain are listed below:

Mol	Chain	Res	Type
1	A	320	SER
1	A	321	THR
1	A	350	THR
1	A	352	ASP
1	A	360	GLU
1	A	371	ARG
1	A	445	HIS
1	A	476	ASN
1	A	527	ASN
1	A	547	ARG
1	A	555	LYS
1	A	569	ASN
1	A	620	LYS
1	A	653	SER
1	A	716	TRP
1	B	350	THR
1	B	375	LYS
1	B	476	ASN
1	B	481	ARG
1	B	507	GLN
1	B	516	ARG
1	B	540	LEU
1	B	547	ARG
1	B	552	ASP
1	B	612	LYS
1	B	620	LYS
1	B	659	ILE
1	B	686	SER

Some sidechains can be flipped to improve hydrogen bonding and reduce clashes. All (21) such sidechains are listed below:

Mol	Chain	Res	Type
1	A	454	ASN
1	A	487	GLN
1	A	527	ASN
1	A	569	ASN
1	A	605	ASN
1	A	642	GLN
1	A	697	ASN
1	B	329	HIS
1	B	364	GLN

*Continued on next page...*

*Continued from previous page...*

Mol	Chain	Res	Type
1	B	385	ASN
1	B	407	HIS
1	B	425	GLN
1	B	436	HIS
1	B	454	ASN
1	B	508	GLN
1	B	527	ASN
1	B	535	GLN
1	B	601	ASN
1	B	605	ASN
1	B	642	GLN
1	B	697	ASN

### 5.3.3 RNA [i](#)

There are no RNA molecules in this entry.

## 5.4 Non-standard residues in protein, DNA, RNA chains [i](#)

There are no non-standard protein/DNA/RNA residues in this entry.

## 5.5 Carbohydrates [i](#)

There are no carbohydrates in this entry.

## 5.6 Ligand geometry [i](#)

8 ligands are modelled in this entry.

In the following table, the Counts columns list the number of bonds (or angles) for which Mogul statistics could be retrieved, the number of bonds (or angles) that are observed in the model and the number of bonds (or angles) that are defined in the chemical component dictionary. The Link column lists molecule types, if any, to which the group is linked. The Z score for a bond length (or angle) is the number of standard deviations the observed value is removed from the expected value. A bond length (or angle) with  $|Z| > 2$  is considered an outlier worth inspection. RMSZ is the root-mean-square of all Z scores of the bond lengths (or angles).

Mol	Type	Chain	Res	Link	Bond lengths			Bond angles		
					Counts	RMSZ	# $ Z  > 2$	Counts	RMSZ	# $ Z  > 2$
2	HEM	A	750	1	30,50,50	2.37	9 (30%)	24,82,82	2.64	12 (50%)

Mol	Type	Chain	Res	Link	Bond lengths			Bond angles		
					Counts	RMSZ	# Z  > 2	Counts	RMSZ	# Z  > 2
3	H4B	A	760	-	13,18,18	0.88	0	11,26,26	2.66	5 (45%)
4	JRR	A	800	-	26,29,29	0.60	0	27,38,38	1.61	3 (11%)
5	ACT	A	860	-	1,3,3	1.22	0	0,3,3	0.00	-
2	HEM	B	750	1	30,50,50	2.23	5 (16%)	24,82,82	2.71	9 (37%)
3	H4B	B	761	-	13,18,18	1.27	2 (15%)	11,26,26	2.54	4 (36%)
4	JRR	B	800	-	26,29,29	0.61	0	27,38,38	1.76	3 (11%)
5	ACT	B	861	-	1,3,3	0.98	0	0,3,3	0.00	-

In the following table, the Chirals column lists the number of chiral outliers, the number of chiral centers analysed, the number of these observed in the model and the number defined in the chemical component dictionary. Similar counts are reported in the Torsion and Rings columns. '-' means no outliers of that kind were identified.

Mol	Type	Chain	Res	Link	Chirals	Torsions	Rings
2	HEM	A	750	1	-	0/10/54/54	0/0/8/8
3	H4B	A	760	-	-	0/8/17/17	0/2/2/2
4	JRR	A	800	-	-	0/13/23/23	0/3/3/3
5	ACT	A	860	-	-	0/0/0/0	0/0/0/0
2	HEM	B	750	1	-	0/10/54/54	0/0/8/8
3	H4B	B	761	-	-	0/8/17/17	0/2/2/2
4	JRR	B	800	-	-	0/13/23/23	0/3/3/3
5	ACT	B	861	-	-	0/0/0/0	0/0/0/0

All (16) bond length outliers are listed below:

Mol	Chain	Res	Type	Atoms	Z	Observed(Å)	Ideal(Å)
2	A	750	HEM	C3B-C4B	-7.53	1.45	1.51
2	B	750	HEM	C3B-C4B	-7.24	1.45	1.51
2	A	750	HEM	C3D-C4D	-6.67	1.43	1.51
2	B	750	HEM	C3D-C4D	-5.59	1.44	1.51
2	B	750	HEM	C2C-C1C	-4.90	1.43	1.52
2	A	750	HEM	C2C-C1C	-3.85	1.45	1.52
2	A	750	HEM	C2D-C1D	-2.27	1.44	1.51
2	A	750	HEM	C2B-C1B	-2.16	1.44	1.51
2	A	750	HEM	C3C-CAC	2.02	1.55	1.51
2	A	750	HEM	C3B-CAB	2.06	1.55	1.51
2	A	750	HEM	CMA-C3A	2.23	1.56	1.51
2	B	750	HEM	FE-NC	2.27	2.04	1.95
3	B	761	H4B	C4-N3	2.41	1.37	1.33
3	B	761	H4B	C7-N8	2.56	1.49	1.46
2	B	750	HEM	CMA-C3A	2.62	1.57	1.51

*Continued on next page...*



*Continued from previous page...*

Mol	Chain	Res	Type	Atoms	Z	Observed(Å)	Ideal(Å)
2	A	750	HEM	FE-NB	2.69	2.11	1.97

All (36) bond angle outliers are listed below:

Mol	Chain	Res	Type	Atoms	Z	Observed(°)	Ideal(°)
2	B	750	HEM	CBA-CAA-C2A	-4.65	104.19	112.53
4	A	800	JRR	C3-C4-C11	-4.26	103.99	112.83
2	B	750	HEM	C3C-CAC-CBC	-4.13	118.12	124.46
2	A	750	HEM	C3C-CAC-CBC	-3.96	118.39	124.46
3	A	760	H4B	N3-C2-N1	-3.87	119.19	125.53
2	B	750	HEM	CBD-CAD-C3D	-3.79	102.51	113.55
2	A	750	HEM	CAA-CBA-CGA	-3.74	105.90	112.75
2	B	750	HEM	CAA-C2A-C1A	-3.33	123.39	127.01
3	B	761	H4B	N3-C2-N1	-2.99	120.63	125.53
4	B	800	JRR	C3-C4-C11	-2.98	106.64	112.83
4	B	800	JRR	C3A-C2A-N1A	-2.97	119.61	122.96
4	A	800	JRR	C3A-C2A-N1A	-2.60	120.03	122.96
2	A	750	HEM	CBD-CAD-C3D	-2.48	106.34	113.55
2	A	750	HEM	C3B-C4B-NB	-2.20	107.42	111.63
2	A	750	HEM	C3B-CAB-CBB	-2.15	121.16	124.46
2	A	750	HEM	C2C-C1C-CHC	2.63	127.68	123.68
3	A	760	H4B	C4-C4A-C8A	2.63	116.95	114.56
2	A	750	HEM	CMD-C2D-C3D	2.68	126.19	114.35
3	B	761	H4B	C2-N1-C8A	2.72	120.65	114.54
2	B	750	HEM	CMD-C2D-C3D	2.80	126.73	114.35
2	A	750	HEM	CMB-C2B-C3B	3.35	124.90	116.53
3	B	761	H4B	C4-N3-C2	3.68	121.05	115.94
3	A	760	H4B	C2-N1-C8A	3.71	122.88	114.54
3	A	760	H4B	C4A-C8A-N8	3.71	122.80	118.43
2	B	750	HEM	CMB-C2B-C3B	4.15	126.90	116.53
2	B	750	HEM	CAD-C3D-C4D	4.18	127.22	112.47
3	A	760	H4B	C4-N3-C2	4.25	121.83	115.94
2	A	750	HEM	CAD-C3D-C4D	4.31	127.69	112.47
2	A	750	HEM	C3B-C4B-CHC	4.34	129.27	123.16
2	A	750	HEM	CMC-C2C-C3C	4.73	128.34	116.53
4	A	800	JRR	C6A-N1A-C2A	4.80	121.64	118.23
2	B	750	HEM	CMC-C2C-C3C	4.85	128.64	116.53
2	A	750	HEM	CAD-C3D-C2D	4.99	127.56	113.22
2	B	750	HEM	CAD-C3D-C2D	5.20	128.17	113.22
3	B	761	H4B	C4-C4A-C8A	5.72	119.74	114.56
4	B	800	JRR	C6A-N1A-C2A	6.25	122.67	118.23

There are no chirality outliers.

There are no torsion outliers.

There are no ring outliers.

3 monomers are involved in 11 short contacts:

Mol	Chain	Res	Type	Clashes	Symm-Clashes
2	A	750	HEM	7	0
4	A	800	JRR	1	0
2	B	750	HEM	3	0

## 5.7 Other polymers [i](#)

There are no such residues in this entry.

## 5.8 Polymer linkage issues [i](#)

There are no chain breaks in this entry.

## 6 Fit of model and data

### 6.1 Protein, DNA and RNA chains

In the following table, the column labelled ‘#RSRZ> 2’ contains the number (and percentage) of RSRZ outliers, followed by percent RSRZ outliers for the chain as percentile scores relative to all X-ray entries and entries of similar resolution. The OWAB column contains the minimum, median, 95<sup>th</sup> percentile and maximum values of the occupancy-weighted average B-factor per residue. The column labelled ‘Q< 0.9’ lists the number of (and percentage) of residues with an average occupancy less than 0.9.

Mol	Chain	Analysed	<RSRZ>	#RSRZ>2	OWAB(Å <sup>2</sup> )	Q<0.9
1	A	407/422 (96%)	0.74	53 (13%) <b>5</b> <b>4</b>	26, 54, 96, 122	0
1	B	411/422 (97%)	0.19	13 (3%) 51 50	24, 41, 67, 81	0
All	All	818/844 (96%)	0.46	66 (8%) <b>15</b> <b>14</b>	24, 46, 87, 122	0

All (66) RSRZ outliers are listed below:

Mol	Chain	Res	Type	RSRZ
1	A	488	PRO	6.7
1	A	715	VAL	5.4
1	A	300	PHE	5.2
1	B	321	THR	4.7
1	A	716	TRP	4.7
1	A	375	LYS	4.6
1	A	713	THR	4.5
1	A	352	ASP	3.9
1	A	494	GLY	3.8
1	B	352	ASP	3.6
1	A	355	PHE	3.4
1	A	503	GLU	3.4
1	A	507	GLN	3.4
1	A	469	LYS	3.3
1	A	386	LYS	3.2
1	A	299	ARG	3.2
1	B	351	LYS	3.2
1	A	351	LYS	3.1
1	A	492	THR	3.0
1	A	322	LEU	3.0
1	A	487	GLN	3.0
1	B	619	ARG	3.0
1	A	319	LYS	3.0
1	B	350	THR	3.0

*Continued on next page...*

*Continued from previous page...*

Mol	Chain	Res	Type	RSRZ
1	A	486	LYS	2.9
1	A	678	TRP	2.8
1	A	485	TYR	2.8
1	A	381	LEU	2.6
1	A	506	ILE	2.6
1	A	372	PHE	2.6
1	A	667	ARG	2.6
1	B	667	ARG	2.6
1	A	493	LEU	2.6
1	B	392	SER	2.5
1	A	554	PHE	2.5
1	A	517	PHE	2.5
1	A	588	TYR	2.5
1	B	353	GLN	2.5
1	A	302	LYS	2.4
1	A	370	LYS	2.4
1	A	559	LEU	2.4
1	A	608	GLU	2.4
1	A	683	MET	2.4
1	A	385	ASN	2.4
1	A	676	TRP	2.3
1	A	677	VAL	2.3
1	A	505	CYS	2.3
1	A	392	SER	2.3
1	B	443	CYS	2.3
1	A	388	ILE	2.2
1	A	504	ILE	2.2
1	A	489	ASP	2.2
1	B	611	ALA	2.2
1	A	442	ILE	2.2
1	B	691	PHE	2.2
1	A	479	LEU	2.1
1	A	500	GLN	2.1
1	A	480	ILE	2.1
1	A	710	PRO	2.1
1	A	565	PRO	2.1
1	A	384	VAL	2.1
1	A	446	VAL	2.1
1	A	567	VAL	2.0
1	B	522	LEU	2.0
1	A	391	THR	2.0
1	B	348	VAL	2.0

## 6.2 Non-standard residues in protein, DNA, RNA chains [i](#)

There are no non-standard protein/DNA/RNA residues in this entry.

## 6.3 Carbohydrates [i](#)

There are no carbohydrates in this entry.

## 6.4 Ligands [i](#)

In the following table, the Atoms column lists the number of modelled atoms in the group and the number defined in the chemical component dictionary. LLDF column lists the quality of electron density of the group with respect to its neighbouring residues in protein, DNA or RNA chains. The B-factors column lists the minimum, median, 95<sup>th</sup> percentile and maximum values of B factors of atoms in the group. The column labelled 'Q< 0.9' lists the number of atoms with occupancy less than 0.9.

Mol	Type	Chain	Res	Atoms	RSCC	RSR	LLDF	B-factors(Å <sup>2</sup> )	Q<0.9
5	ACT	A	860	4/4	0.91	0.23	4.39	86,87,87,87	0
5	ACT	B	861	4/4	0.93	0.21	3.51	76,76,76,76	0
4	JRR	A	800	27/27	0.83	0.27	1.72	51,67,73,76	0
4	JRR	B	800	27/27	0.90	0.22	1.51	49,56,61,62	0
2	HEM	A	750	43/43	0.96	0.20	0.58	21,37,48,52	0
3	H4B	A	760	17/17	0.91	0.20	0.31	32,35,45,46	0
2	HEM	B	750	43/43	0.97	0.14	-0.02	25,32,41,44	0
3	H4B	B	761	17/17	0.95	0.16	-0.18	23,29,36,37	0

## 6.5 Other polymers [i](#)

There are no such residues in this entry.