



Full wwPDB X-ray Structure Validation Report ⓘ

Jan 31, 2016 – 09:07 PM GMT

PDB ID : 1NMQ
Title : Extendend Tethering: In Situ Assembly of Inhibitors
Authors : Erlanson, D.A.; Lam, J.; Wiesmann, C.; Luong, T.N.; Simmons, R.L.; DeLano, W.; Choong, I.C.; Flanagan, M.; Lee, D.; O'Brian, T.
Deposited on : 2003-01-10
Resolution : 2.40 Å(reported)

This is a Full wwPDB X-ray Structure Validation Report for a publicly released PDB entry.
We welcome your comments at validation@mail.wwpdb.org
A user guide is available at
<http://wwpdb.org/validation/2016/XrayValidationReportHelp>
with specific help available everywhere you see the ⓘ symbol.

The following versions of software and data (see [references ⓘ](#)) were used in the production of this report:

MolProbity : 4.02b-467
Mogul : 1.7 (RC4), CSD as536be (2015)
Xtriage (Phenix) : 1.9-1692
EDS : rb-20026688
Percentile statistics : 20151230.v01 (using entries in the PDB archive December 30th 2015)
Refmac : 5.8.0135
CCP4 : 6.5.0
Ideal geometry (proteins) : Engh & Huber (2001)
Ideal geometry (DNA, RNA) : Parkinson et al. (1996)
Validation Pipeline (wwPDB-VP) : trunk26865

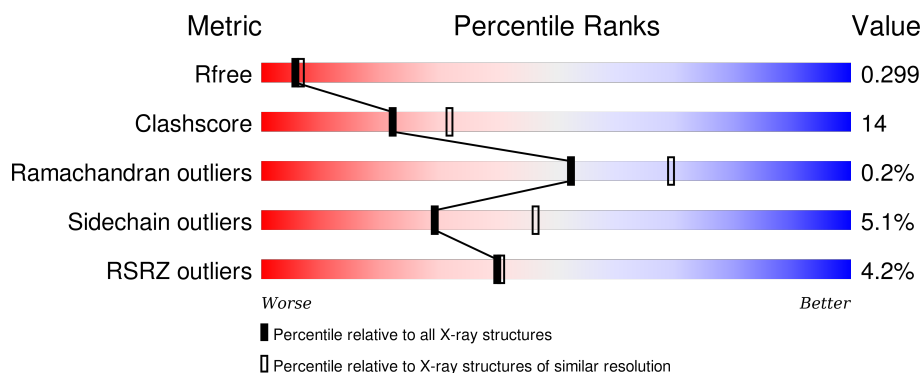
1 Overall quality at a glance

The following experimental techniques were used to determine the structure:

X-RAY DIFFRACTION

The reported resolution of this entry is 2.40 Å.

Percentile scores (ranging between 0-100) for global validation metrics of the entry are shown in the following graphic. The table shows the number of entries on which the scores are based.



Metric	Whole archive (#Entries)	Similar resolution (#Entries, resolution range(Å))
R_{free}	91344	2919 (2.40-2.40)
Clashscore	102246	3407 (2.40-2.40)
Ramachandran outliers	100387	3351 (2.40-2.40)
Sidechain outliers	100360	3352 (2.40-2.40)
RSRZ outliers	91569	2928 (2.40-2.40)

The table below summarises the geometric issues observed across the polymeric chains and their fit to the electron density. The red, orange, yellow and green segments on the lower bar indicate the fraction of residues that contain outliers for ≥ 3 , 2, 1 and 0 types of geometric quality criteria. A grey segment represents the fraction of residues that are not modelled. The numeric value for each fraction is indicated below the corresponding segment, with a dot representing fractions $\leq 5\%$. The upper red bar (where present) indicates the fraction of residues that have poor fit to the electron density. The numeric value is given above the bar.

Mol	Chain	Length	Quality of chain
1	A	249	<div> <div>4%</div> <div>71%</div> <div>22%</div> <div>• •</div> </div>
1	B	249	<div> <div>4%</div> <div>74%</div> <div>18%</div> <div>• •</div> </div>

The following table lists non-polymeric compounds, carbohydrate monomers and non-standard residues in protein, DNA, RNA chains that are outliers for geometric or electron-density-fit criteria:

Mol	Type	Chain	Res	Chirality	Geometry	Clashes	Electron density
2	160	A	1278	-	-	X	X
2	160	B	5278	-	-	-	X

2 Entry composition [i](#)

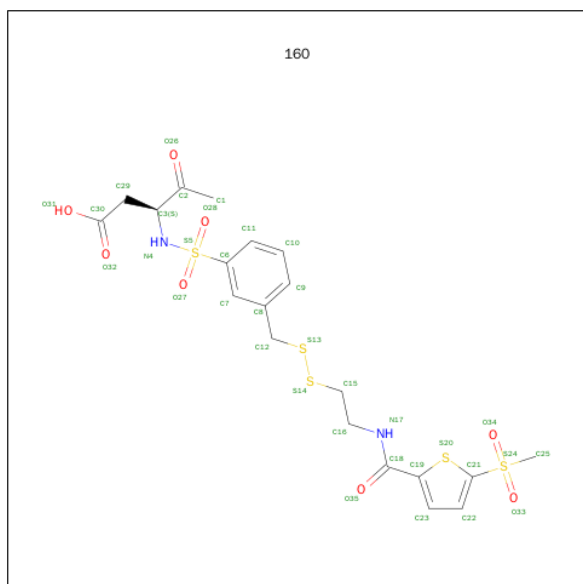
There are 3 unique types of molecules in this entry. The entry contains 4024 atoms, of which 0 are hydrogens and 0 are deuteriums.

In the tables below, the ZeroOcc column contains the number of atoms modelled with zero occupancy, the AltConf column contains the number of residues with at least one atom in alternate conformation and the Trace column contains the number of residues modelled with at most 2 atoms.

- Molecule 1 is a protein called Caspase-3.

Mol	Chain	Residues	Atoms					ZeroOcc	AltConf	Trace
1	A	238	Total	C	N	O	S	0	0	0
			1927	1217	331	364	15			
1	B	238	Total	C	N	O	S	0	0	0
			1927	1217	331	364	15			

- Molecule 2 is 3-(3-{2-[(5-METHANESULFONYL-THIOPHENE-2-CARBONYL)-AMINO]-ETHYLDISULFANYLMETHYL}- BENZENESULFONYLAMINO)-4-OXO-PENTANOIC ACID (three-letter code: 160) (formula: C₂₀H₂₄N₂O₈S₅).



Mol	Chain	Residues	Atoms					ZeroOcc	AltConf
2	A	1	Total	C	N	O	S	0	0
			35	20	2	8	5		
2	B	1	Total	C	N	O	S	0	0
			35	20	2	8	5		

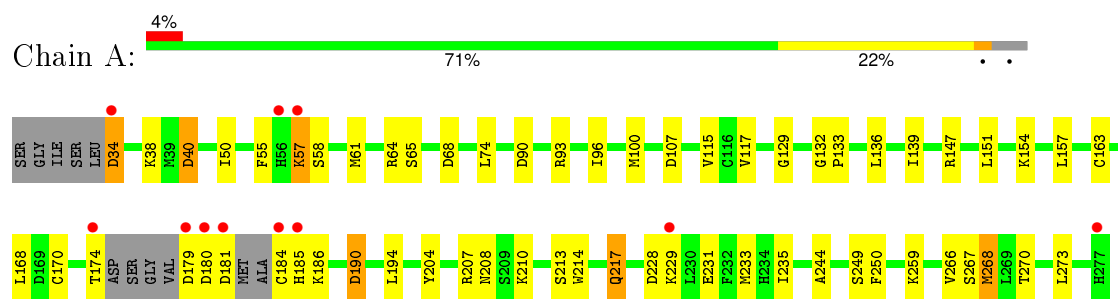
- Molecule 3 is water.

Mol	Chain	Residues	Atoms		ZeroOcc	AltConf
3	A	53	Total 53	O 53	0	0
3	B	47	Total 47	O 47	0	0

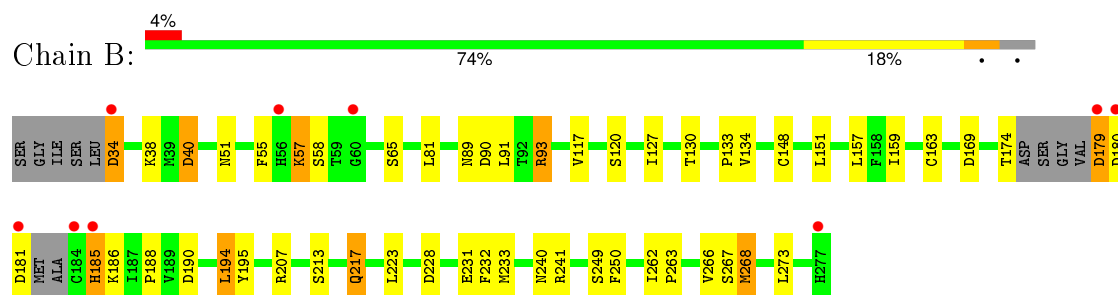
3 Residue-property plots [i](#)

These plots are drawn for all protein, RNA and DNA chains in the entry. The first graphic for a chain summarises the proportions of errors displayed in the second graphic. The second graphic shows the sequence view annotated by issues in geometry and electron density. Residues are color-coded according to the number of geometric quality criteria for which they contain at least one outlier: green = 0, yellow = 1, orange = 2 and red = 3 or more. A red dot above a residue indicates a poor fit to the electron density ($\text{RSRZ} > 2$). Stretches of 2 or more consecutive residues without any outlier are shown as a green connector. Residues present in the sample, but not in the model, are shown in grey.

• Molecule 1: Caspase-3



• Molecule 1: Caspase-3



4 Data and refinement statistics

Property	Value	Source
Space group	P 21 21 21	Depositor
Cell constants a, b, c, α , β , γ	68.86Å 89.04Å 96.53Å 90.00° 90.00° 90.00°	Depositor
Resolution (Å)	20.00 – 2.40 11.96 – 2.40	Depositor EDS
% Data completeness (in resolution range)	93.9 (20.00-2.40) 94.6 (11.96-2.40)	Depositor EDS
R_{merge}	(Not available)	Depositor
R_{sym}	0.10	Depositor
$\langle I/\sigma(I) \rangle$ ¹	4.94 (at 2.40Å)	Xtriage
Refinement program	REFMAC 5	Depositor
R, R_{free}	0.241 , 0.299 0.241 , 0.299	Depositor DCC
R_{free} test set	2238 reflections (11.14%)	DCC
Wilson B-factor (Å ²)	26.3	Xtriage
Anisotropy	0.044	Xtriage
Bulk solvent k_{sol} (e/Å ³), B_{sol} (Å ²)	0.35 , 34.7	EDS
Estimated twinning fraction	No twinning to report.	Xtriage
L-test for twinning ²	$\langle L \rangle = 0.46$, $\langle L^2 \rangle = 0.29$	Xtriage
Outliers	10 of 22336 reflections (0.045%)	Xtriage
F_o, F_c correlation	0.94	EDS
Total number of atoms	4024	wwPDB-VP
Average B, all atoms (Å ²)	25.0	wwPDB-VP

Xtriage's analysis on translational NCS is as follows: *The analyses of the Patterson function reveals a significant off-origin peak that is 50.68 % of the origin peak, indicating pseudo translational symmetry. The chance of finding a peak of this or larger height randomly in a structure without pseudo translational symmetry is equal to 6.2453e-05. The detected translational NCS is most likely also responsible for the elevated intensity ratio.*

¹ Intensities estimated from amplitudes.

² Theoretical values of $\langle |L| \rangle$, $\langle L^2 \rangle$ for acentric reflections are 0.5, 0.375 respectively for untwinned datasets, and 0.333, 0.2 for perfectly twinned datasets.

5 Model quality

5.1 Standard geometry

Bond lengths and bond angles in the following residue types are not validated in this section:
160

The Z score for a bond length (or angle) is the number of standard deviations the observed value is removed from the expected value. A bond length (or angle) with $|Z| > 5$ is considered an outlier worth inspection. RMSZ is the root-mean-square of all Z scores of the bond lengths (or angles).

Mol	Chain	Bond lengths		Bond angles	
		RMSZ	$\# Z > 5$	RMSZ	$\# Z > 5$
1	A	0.48	0/1966	0.82	9/2640 (0.3%)
1	B	0.48	0/1966	0.84	9/2640 (0.3%)
All	All	0.48	0/3932	0.83	18/5280 (0.3%)

There are no bond length outliers.

All (18) bond angle outliers are listed below:

Mol	Chain	Res	Type	Atoms	Z	Observed(°)	Ideal(°)
1	B	90	ASP	CB-CG-OD2	7.31	124.88	118.30
1	A	40	ASP	CB-CG-OD2	5.99	123.69	118.30
1	B	190	ASP	CB-CG-OD2	5.98	123.68	118.30
1	A	228	ASP	CB-CG-OD2	5.77	123.49	118.30
1	A	190	ASP	CB-CG-OD2	5.72	123.45	118.30
1	A	107	ASP	CB-CG-OD2	5.66	123.39	118.30
1	A	34	ASP	CB-CG-OD2	5.59	123.33	118.30
1	B	179	ASP	CB-CG-OD2	5.55	123.30	118.30
1	A	181	ASP	CB-CG-OD2	5.53	123.28	118.30
1	B	181	ASP	CB-CG-OD2	5.52	123.27	118.30
1	B	180	ASP	CB-CG-OD2	5.42	123.17	118.30
1	B	40	ASP	CB-CG-OD2	5.34	123.11	118.30
1	A	68	ASP	CB-CG-OD2	5.25	123.03	118.30
1	A	90	ASP	CB-CG-OD2	5.12	122.91	118.30
1	A	179	ASP	CB-CG-OD2	5.09	122.89	118.30
1	B	169	ASP	CB-CG-OD2	5.07	122.86	118.30
1	B	34	ASP	CB-CG-OD2	5.07	122.86	118.30
1	B	228	ASP	CB-CG-OD2	5.03	122.82	118.30

There are no chirality outliers.

There are no planarity outliers.

5.2 Too-close contacts ⓘ

In the following table, the Non-H and H(model) columns list the number of non-hydrogen atoms and hydrogen atoms in the chain respectively. The H(added) column lists the number of hydrogen atoms added and optimized by MolProbity. The Clashes column lists the number of clashes within the asymmetric unit, whereas Symm-Clashes lists symmetry related clashes.

Mol	Chain	Non-H	H(model)	H(added)	Clashes	Symm-Clashes
1	A	1927	0	1882	55	0
1	B	1927	0	1882	52	0
2	A	35	0	23	11	0
2	B	35	0	23	7	0
3	A	53	0	0	3	0
3	B	47	0	0	2	0
All	All	4024	0	3810	105	0

The all-atom clashscore is defined as the number of clashes found per 1000 atoms (including hydrogen atoms). The all-atom clashscore for this structure is 14.

All (105) close contacts within the same asymmetric unit are listed below, sorted by their clash magnitude.

Atom-1	Atom-2	Interatomic distance (Å)	Clash overlap (Å)
1:B:163:CYS:SG	2:B:5278:160:H13	1.43	1.58
1:B:57:LYS:CE	1:B:57:LYS:H	1.53	1.20
1:A:163:CYS:SG	2:A:1278:160:C2	2.39	1.10
1:B:57:LYS:H	1:B:57:LYS:HE2	1.19	1.08
1:A:163:CYS:SG	2:A:1278:160:H13	1.96	1.05
1:A:249:SER:HA	2:A:1278:160:C25	1.92	0.99
1:B:163:CYS:HG	2:B:5278:160:H13	1.14	0.96
1:B:57:LYS:HE3	1:B:57:LYS:H	1.31	0.96
1:B:163:CYS:SG	2:B:5278:160:C2	2.55	0.93
1:A:249:SER:HA	2:A:1278:160:H251	1.52	0.91
1:A:268:MET:HE3	1:A:268:MET:N	1.86	0.90
1:A:213:SER:O	1:A:217:GLN:HG2	1.72	0.90
1:A:194:LEU:HD12	1:A:233:MET:HE1	1.53	0.88
1:B:268:MET:N	1:B:268:MET:HE3	1.89	0.88
1:A:194:LEU:CD1	1:A:233:MET:HE1	2.04	0.88
1:B:57:LYS:N	1:B:57:LYS:HE2	1.90	0.86
1:B:213:SER:O	1:B:217:GLN:HG2	1.75	0.86
1:B:57:LYS:CE	1:B:57:LYS:N	2.38	0.86
1:A:194:LEU:CD1	1:A:233:MET:CE	2.54	0.86
1:B:250:PHE:O	2:B:5278:160:H22	1.79	0.83
1:A:174:THR:HA	3:A:1330:HOH:O	1.90	0.72

Continued on next page...

Continued from previous page...

Atom-1	Atom-2	Interatomic distance (Å)	Clash overlap (Å)
1:A:57:LYS:HE3	1:A:57:LYS:N	2.05	0.70
1:A:194:LEU:HD12	1:A:233:MET:CE	2.18	0.70
1:A:57:LYS:CE	1:A:57:LYS:H	2.08	0.66
1:B:57:LYS:N	1:B:57:LYS:HE3	2.09	0.65
1:B:120:SER:HB3	1:B:127:ILE:HD11	1.78	0.65
1:A:194:LEU:CD1	1:A:233:MET:HE2	2.28	0.63
1:B:163:CYS:SG	2:B:5278:160:H11A	2.35	0.62
1:A:270:THR:O	1:B:241:ARG:HD3	2.00	0.62
1:A:151:LEU:HA	1:A:154:LYS:HD2	1.81	0.61
1:B:207:ARG:HA	1:B:213:SER:HA	1.85	0.59
1:A:50:ILE:HD13	1:A:96:ILE:HG12	1.85	0.58
1:A:100:MET:CE	1:A:139:ILE:HG23	2.34	0.57
1:A:194:LEU:HD11	1:A:233:MET:CE	2.34	0.57
1:A:64:ARG:HE	2:A:1278:160:C30	2.18	0.56
1:B:93:ARG:NH2	1:B:133:PRO:O	2.39	0.56
1:A:194:LEU:HD11	1:A:233:MET:HE1	1.88	0.56
1:A:266:VAL:HG12	1:A:268:MET:HE1	1.88	0.55
1:B:249:SER:HA	2:B:5278:160:O33	2.07	0.55
1:A:208:ASN:HA	2:A:1278:160:H22	1.88	0.54
1:A:207:ARG:HA	1:A:213:SER:HA	1.88	0.54
1:A:100:MET:HE3	1:A:139:ILE:HG23	1.91	0.53
1:A:249:SER:CA	2:A:1278:160:H251	2.34	0.53
1:B:179:ASP:OD1	1:B:179:ASP:N	2.42	0.52
1:B:134:VAL:HA	3:B:5310:HOH:O	2.10	0.51
1:A:34:ASP:HA	3:A:1312:HOH:O	2.10	0.51
1:B:51:ASN:HB3	1:B:89:ASN:HD22	1.75	0.50
1:B:38:LYS:NZ	1:B:40:ASP:OD1	2.39	0.50
1:B:51:ASN:HD22	1:B:89:ASN:ND2	2.10	0.49
1:A:74:LEU:HD13	1:A:117:VAL:HG11	1.95	0.49
1:B:262:ILE:HD12	1:B:263:PRO:HD2	1.94	0.49
1:A:231:GLU:OE1	1:A:233:MET:N	2.46	0.49
1:A:267:SER:C	1:A:268:MET:HE3	2.33	0.49
1:B:163:CYS:HG	2:B:5278:160:C1	1.94	0.48
1:A:115:VAL:HG22	1:A:157:LEU:HD12	1.96	0.48
1:B:194:LEU:HD22	1:B:232:PHE:HE2	1.79	0.48
1:A:214:TRP:HZ2	2:A:1278:160:H253	1.79	0.48
1:B:231:GLU:OE1	1:B:233:MET:HB2	2.14	0.47
1:B:157:LEU:HD22	1:B:194:LEU:CD2	2.44	0.47
1:A:163:CYS:SG	2:A:1278:160:H11A	2.43	0.47
1:B:194:LEU:HD13	1:B:233:MET:CE	2.45	0.47
1:B:194:LEU:HD13	1:B:233:MET:HE3	1.96	0.47

Continued on next page...

Continued from previous page...

Atom-1	Atom-2	Interatomic distance (Å)	Clash overlap (Å)
1:B:157:LEU:HD22	1:B:194:LEU:HD22	1.97	0.46
1:B:194:LEU:HD22	1:B:232:PHE:CE2	2.51	0.46
1:B:55:PHE:N	1:B:55:PHE:CD1	2.84	0.46
1:A:129:GLY:N	1:A:132:GLY:O	2.47	0.46
1:A:93:ARG:NH2	1:A:133:PRO:O	2.49	0.45
1:A:208:ASN:OD1	1:A:208:ASN:C	2.54	0.45
1:A:213:SER:O	1:A:217:GLN:CG	2.56	0.45
1:A:163:CYS:SG	2:A:1278:160:O26	2.68	0.45
1:A:38:LYS:NZ	1:A:40:ASP:OD1	2.39	0.45
1:A:250:PHE:H	2:A:1278:160:H252	1.81	0.45
1:A:231:GLU:OE1	1:A:233:MET:HB2	2.17	0.44
1:A:266:VAL:HG12	1:A:268:MET:CE	2.46	0.44
1:A:55:PHE:N	1:A:55:PHE:CD1	2.85	0.44
1:A:267:SER:C	1:A:268:MET:CE	2.86	0.44
1:B:268:MET:N	1:B:268:MET:CE	2.73	0.44
1:B:194:LEU:HG	1:B:195:TYR:N	2.32	0.44
1:B:266:VAL:HG12	1:B:268:MET:HE1	1.99	0.44
1:B:34:ASP:O	1:B:34:ASP:CG	2.56	0.43
1:B:262:ILE:HD12	1:B:263:PRO:CD	2.47	0.43
1:B:81:LEU:HA	1:B:81:LEU:HD23	1.84	0.43
1:A:208:ASN:OD1	1:A:210:LYS:N	2.45	0.43
1:B:267:SER:C	1:B:268:MET:HE3	2.39	0.43
1:B:157:LEU:CD2	1:B:194:LEU:HB3	2.49	0.43
1:A:231:GLU:O	1:A:235:ILE:HG13	2.20	0.42
1:B:120:SER:HB3	1:B:127:ILE:CD1	2.49	0.42
1:B:51:ASN:HB3	1:B:89:ASN:ND2	2.34	0.42
1:B:185:HIS:HB2	3:B:5301:HOH:O	2.19	0.42
1:A:147:ARG:HA	3:A:1315:HOH:O	2.18	0.42
1:A:55:PHE:CD2	1:A:61:MET:HE3	2.55	0.42
1:B:91:LEU:O	1:B:130:THR:HG23	2.19	0.42
1:B:240:ASN:HA	1:B:263:PRO:HG2	2.02	0.42
1:B:148:CYS:SG	1:B:151:LEU:HD12	2.60	0.41
1:B:223:LEU:HA	1:B:223:LEU:HD23	1.90	0.41
1:A:151:LEU:O	1:A:154:LYS:HB2	2.19	0.41
1:A:136:LEU:HA	1:A:136:LEU:HD23	1.87	0.41
1:A:57:LYS:CE	1:A:57:LYS:N	2.69	0.41
1:B:267:SER:C	1:B:268:MET:CE	2.89	0.41
1:A:96:ILE:O	1:A:100:MET:HG2	2.21	0.41
1:B:38:LYS:HG3	1:B:40:ASP:OD1	2.21	0.41
1:A:170:CYS:SG	1:A:259:LYS:NZ	2.84	0.41
1:A:168:LEU:CD2	1:A:204:TYR:CD1	3.03	0.41

Continued on next page...

Continued from previous page...

Atom-1	Atom-2	Interatomic distance (Å)	Clash overlap (Å)
1:A:244:ALA:HB1	1:B:188:PRO:CD	2.51	0.40
1:B:117:VAL:HG13	1:B:159:ILE:HB	2.04	0.40

There are no symmetry-related clashes.

5.3 Torsion angles [i](#)

5.3.1 Protein backbone [i](#)

In the following table, the Percentiles column shows the percent Ramachandran outliers of the chain as a percentile score with respect to all X-ray entries followed by that with respect to entries of similar resolution.

The Analysed column shows the number of residues for which the backbone conformation was analysed, and the total number of residues.

Mol	Chain	Analysed	Favoured	Allowed	Outliers	Percentiles	
1	A	232/249 (93%)	223 (96%)	8 (3%)	1 (0%)	39	56
1	B	232/249 (93%)	224 (97%)	8 (3%)	0	100	100
All	All	464/498 (93%)	447 (96%)	16 (3%)	1 (0%)	52	69

All (1) Ramachandran outliers are listed below:

Mol	Chain	Res	Type
1	A	180	ASP

5.3.2 Protein sidechains [i](#)

In the following table, the Percentiles column shows the percent sidechain outliers of the chain as a percentile score with respect to all X-ray entries followed by that with respect to entries of similar resolution.

The Analysed column shows the number of residues for which the sidechain conformation was analysed, and the total number of residues.

Mol	Chain	Analysed	Rotameric	Outliers	Percentiles	
1	A	214/222 (96%)	203 (95%)	11 (5%)	29	46
1	B	214/222 (96%)	203 (95%)	11 (5%)	29	46
All	All	428/444 (96%)	406 (95%)	22 (5%)	29	46

All (22) residues with a non-rotameric sidechain are listed below:

Mol	Chain	Res	Type
1	A	57	LYS
1	A	58	SER
1	A	65	SER
1	A	184	CYS
1	A	185	HIS
1	A	186	LYS
1	A	190	ASP
1	A	217	GLN
1	A	229	LYS
1	A	268	MET
1	A	273	LEU
1	B	57	LYS
1	B	58	SER
1	B	65	SER
1	B	93	ARG
1	B	174	THR
1	B	185	HIS
1	B	186	LYS
1	B	194	LEU
1	B	217	GLN
1	B	268	MET
1	B	273	LEU

Some sidechains can be flipped to improve hydrogen bonding and reduce clashes. All (3) such sidechains are listed below:

Mol	Chain	Res	Type
1	A	89	ASN
1	B	54	ASN
1	B	89	ASN

5.3.3 RNA ⓘ

There are no RNA molecules in this entry.

5.4 Non-standard residues in protein, DNA, RNA chains ⓘ

There are no non-standard protein/DNA/RNA residues in this entry.

5.5 Carbohydrates

There are no carbohydrates in this entry.

5.6 Ligand geometry

2 ligands are modelled in this entry.

In the following table, the Counts columns list the number of bonds (or angles) for which Mogul statistics could be retrieved, the number of bonds (or angles) that are observed in the model and the number of bonds (or angles) that are defined in the chemical component dictionary. The Link column lists molecule types, if any, to which the group is linked. The Z score for a bond length (or angle) is the number of standard deviations the observed value is removed from the expected value. A bond length (or angle) with $|Z| > 2$ is considered an outlier worth inspection. RMSZ is the root-mean-square of all Z scores of the bond lengths (or angles).

Mol	Type	Chain	Res	Link	Bond lengths			Bond angles		
					Counts	RMSZ	$\# Z > 2$	Counts	RMSZ	$\# Z > 2$
2	160	A	1278	1	29,36,36	1.99	7 (24%)	34,51,51	1.88	5 (14%)
2	160	B	5278	1	29,36,36	1.97	7 (24%)	34,51,51	1.60	5 (14%)

In the following table, the Chirals column lists the number of chiral outliers, the number of chiral centers analysed, the number of these observed in the model and the number defined in the chemical component dictionary. Similar counts are reported in the Torsion and Rings columns. '-' means no outliers of that kind were identified.

Mol	Type	Chain	Res	Link	Chirals	Torsions	Rings
2	160	A	1278	1	-	0/27/38/38	0/2/2/2
2	160	B	5278	1	-	0/27/38/38	0/2/2/2

All (14) bond length outliers are listed below:

Mol	Chain	Res	Type	Atoms	Z	Observed(Å)	Ideal(Å)
2	B	5278	160	C6-S5	-3.48	1.71	1.76
2	B	5278	160	C21-S24	-3.45	1.75	1.79
2	A	1278	160	C21-S24	-3.30	1.75	1.79
2	B	5278	160	C21-S20	-2.72	1.67	1.72
2	A	1278	160	C21-S20	-2.62	1.67	1.72
2	A	1278	160	C6-S5	-2.55	1.72	1.76
2	A	1278	160	C3-N4	-2.06	1.43	1.46
2	B	5278	160	C3-N4	-2.05	1.43	1.46
2	B	5278	160	O28-S5	4.44	1.48	1.43
2	A	1278	160	O28-S5	4.65	1.48	1.43
2	B	5278	160	O27-S5	4.68	1.48	1.43

Continued on next page...

Continued from previous page...

Mol	Chain	Res	Type	Atoms	Z	Observed(Å)	Ideal(Å)
2	A	1278	160	O27-S5	4.81	1.48	1.43
2	B	5278	160	S5-N4	5.32	1.70	1.61
2	A	1278	160	S5-N4	5.86	1.71	1.61

All (10) bond angle outliers are listed below:

Mol	Chain	Res	Type	Atoms	Z	Observed(°)	Ideal(°)
2	A	1278	160	O28-S5-O27	-6.93	110.35	119.54
2	B	5278	160	O28-S5-O27	-6.44	111.00	119.54
2	A	1278	160	O34-S24-O33	-3.60	110.22	117.73
2	A	1278	160	C29-C3-N4	-3.54	106.53	110.62
2	B	5278	160	C29-C3-N4	-2.93	107.23	110.62
2	B	5278	160	O34-S24-O33	-2.38	112.76	117.73
2	B	5278	160	C19-C18-N17	2.04	118.16	115.42
2	B	5278	160	C25-S24-C21	2.88	109.69	105.68
2	A	1278	160	C25-S24-C21	3.02	109.88	105.68
2	A	1278	160	C19-C18-N17	3.80	120.53	115.42

There are no chirality outliers.

There are no torsion outliers.

There are no ring outliers.

2 monomers are involved in 18 short contacts:

Mol	Chain	Res	Type	Clashes	Symm-Clashes
2	A	1278	160	11	0
2	B	5278	160	7	0

5.7 Other polymers [i](#)

There are no such residues in this entry.

5.8 Polymer linkage issues [i](#)

There are no chain breaks in this entry.

6 Fit of model and data

6.1 Protein, DNA and RNA chains

In the following table, the column labelled ‘#RSRZ> 2’ contains the number (and percentage) of RSRZ outliers, followed by percent RSRZ outliers for the chain as percentile scores relative to all X-ray entries and entries of similar resolution. The OWAB column contains the minimum, median, 95th percentile and maximum values of the occupancy-weighted average B-factor per residue. The column labelled ‘Q< 0.9’ lists the number of (and percentage) of residues with an average occupancy less than 0.9.

Mol	Chain	Analysed	<RSRZ>	#RSRZ>2	OWAB(Å ²)	Q<0.9
1	A	238/249 (95%)	-0.06	11 (4%) 36 37	9, 21, 61, 106	0
1	B	238/249 (95%)	-0.05	9 (3%) 44 45	9, 21, 59, 108	2 (0%)
All	All	476/498 (95%)	-0.06	20 (4%) 40 41	9, 21, 61, 108	2 (0%)

All (20) RSRZ outliers are listed below:

Mol	Chain	Res	Type	RSRZ
1	B	184	CYS	15.1
1	A	184	CYS	8.0
1	A	179	ASP	5.7
1	B	181	ASP	5.5
1	B	179	ASP	4.7
1	B	185	HIS	4.7
1	A	277	HIS	4.4
1	B	180	ASP	4.2
1	A	34	ASP	3.9
1	A	181	ASP	3.9
1	B	34	ASP	3.8
1	A	174	THR	3.5
1	B	277	HIS	3.2
1	A	180	ASP	3.2
1	A	57	LYS	3.2
1	B	56	HIS	2.9
1	B	60	GLY	2.7
1	A	56	HIS	2.4
1	A	185	HIS	2.4
1	A	229	LYS	2.3

6.2 Non-standard residues in protein, DNA, RNA chains [i](#)

There are no non-standard protein/DNA/RNA residues in this entry.

6.3 Carbohydrates [i](#)

There are no carbohydrates in this entry.

6.4 Ligands [i](#)

In the following table, the Atoms column lists the number of modelled atoms in the group and the number defined in the chemical component dictionary. LLDF column lists the quality of electron density of the group with respect to its neighbouring residues in protein, DNA or RNA chains. The B-factors column lists the minimum, median, 95th percentile and maximum values of B factors of atoms in the group. The column labelled 'Q< 0.9' lists the number of atoms with occupancy less than 0.9.

Mol	Type	Chain	Res	Atoms	RSCC	RSR	LLDF	B-factors(\AA^2)	Q<0.9
2	160	A	1278	35/35	0.85	0.23	3.50	19,37,65,70	0
2	160	B	5278	35/35	0.86	0.20	2.75	22,38,62,66	0

6.5 Other polymers [i](#)

There are no such residues in this entry.