



# Full wwPDB X-ray Structure Validation Report ⓘ

Feb 1, 2016 – 10:56 AM GMT

PDB ID : 3NM0  
Title : Structure of rat neuronal nitric oxide synthase heme domain in complex with 6-(((3R,4R)-4-(2-(2,2-Difluoro-2-phenylethylamino)ethoxy) pyrrolidin-3-yl)methyl)-4-methyl-3,4,5,6-tetrahydropyridin-2-amine  
Authors : Li, H.; Delker, S.L.; Poulos, T.L.  
Deposited on : 2010-06-21  
Resolution : 1.81 Å(reported)

This is a Full wwPDB X-ray Structure Validation Report for a publicly released PDB entry.  
We welcome your comments at [validation@mail.wwpdb.org](mailto:validation@mail.wwpdb.org)  
A user guide is available at  
<http://wwpdb.org/validation/2016/XrayValidationReportHelp>  
with specific help available everywhere you see the ⓘ symbol.

---

The following versions of software and data (see [references ⓘ](#)) were used in the production of this report:

MolProbity : 4.02b-467  
Mogul : 1.7 (RC4), CSD as536be (2015)  
Xtriage (Phenix) : 1.9-1692  
EDS : rb-20026688  
Percentile statistics : 20151230.v01 (using entries in the PDB archive December 30th 2015)  
Refmac : 5.8.0135  
CCP4 : 6.5.0  
Ideal geometry (proteins) : Engh & Huber (2001)  
Ideal geometry (DNA, RNA) : Parkinson et al. (1996)  
Validation Pipeline (wwPDB-VP) : trunk26865

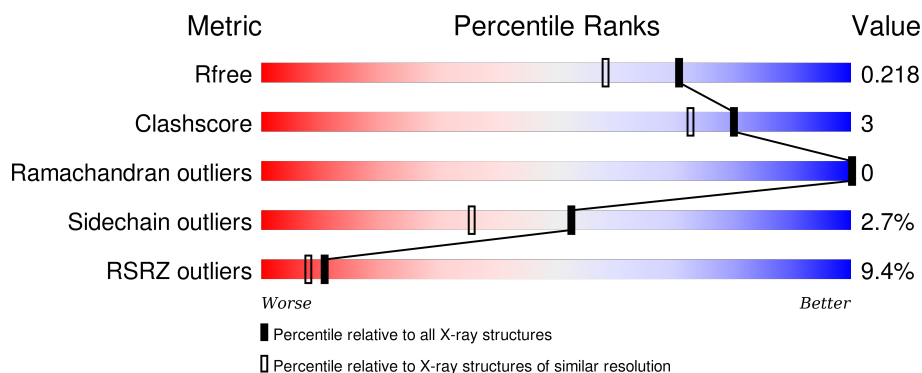
# 1 Overall quality at a glance

The following experimental techniques were used to determine the structure:

## *X-RAY DIFFRACTION*

The reported resolution of this entry is 1.81 Å.

Percentile scores (ranging between 0-100) for global validation metrics of the entry are shown in the following graphic. The table shows the number of entries on which the scores are based.



Metric	Whole archive (#Entries)	Similar resolution (#Entries, resolution range(Å))
$R_{free}$	91344	5422 (1.84-1.80)
Clashscore	102246	6347 (1.84-1.80)
Ramachandran outliers	100387	6276 (1.84-1.80)
Sidechain outliers	100360	6276 (1.84-1.80)
RSRZ outliers	91569	5439 (1.84-1.80)

The table below summarises the geometric issues observed across the polymeric chains and their fit to the electron density. The red, orange, yellow and green segments on the lower bar indicate the fraction of residues that contain outliers for  $\geq 3$ , 2, 1 and 0 types of geometric quality criteria. A grey segment represents the fraction of residues that are not modelled. The numeric value for each fraction is indicated below the corresponding segment, with a dot representing fractions  $\leq 5\%$ . The upper red bar (where present) indicates the fraction of residues that have poor fit to the electron density. The numeric value is given above the bar.

Mol	Chain	Length	Quality of chain
1	A	422	<div> <div>12%</div> <div>86%</div> <div>9% . .</div> </div>
1	B	422	<div> <div>6%</div> <div>91%</div> <div>7% .</div> </div>

The following table lists non-polymeric compounds, carbohydrate monomers and non-standard residues in protein, DNA, RNA chains that are outliers for geometric or electron-density-fit criteria:

Mol	Type	Chain	Res	Chirality	Geometry	Clashes	Electron density
5	ACT	A	860	-	-	-	X

## 2 Entry composition [i](#)

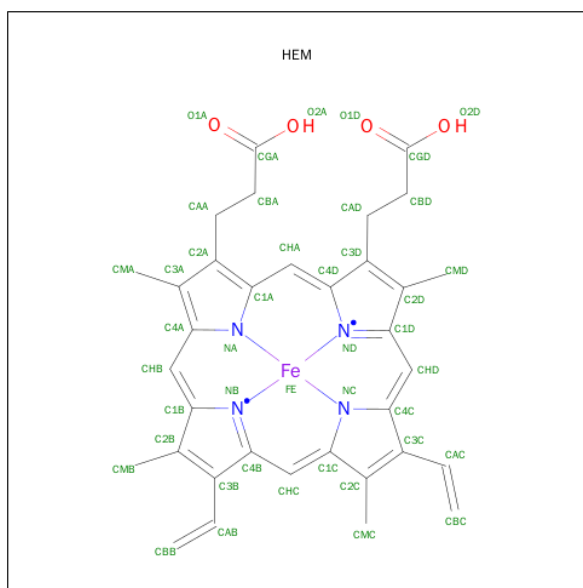
There are 7 unique types of molecules in this entry. The entry contains 7388 atoms, of which 0 are hydrogens and 0 are deuteriums.

In the tables below, the ZeroOcc column contains the number of atoms modelled with zero occupancy, the AltConf column contains the number of residues with at least one atom in alternate conformation and the Trace column contains the number of residues modelled with at most 2 atoms.

- Molecule 1 is a protein called Nitric oxide synthase, brain.

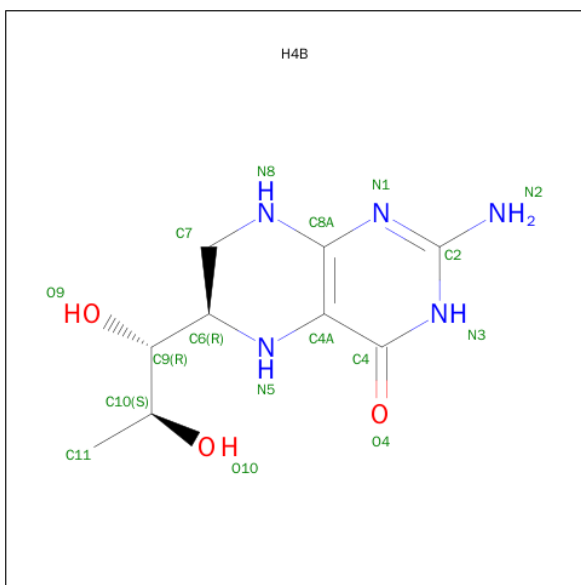
Mol	Chain	Residues	Atoms					ZeroOcc	AltConf	Trace
1	A	409	Total	C	N	O	S	0	5	0
			3354	2148	571	612	23			
1	B	411	Total	C	N	O	S	0	4	0
			3362	2152	574	613	23			

- Molecule 2 is PROTOPORPHYRIN IX CONTAINING FE (three-letter code: HEM) (formula:  $C_{34}H_{32}FeN_4O_4$ ).



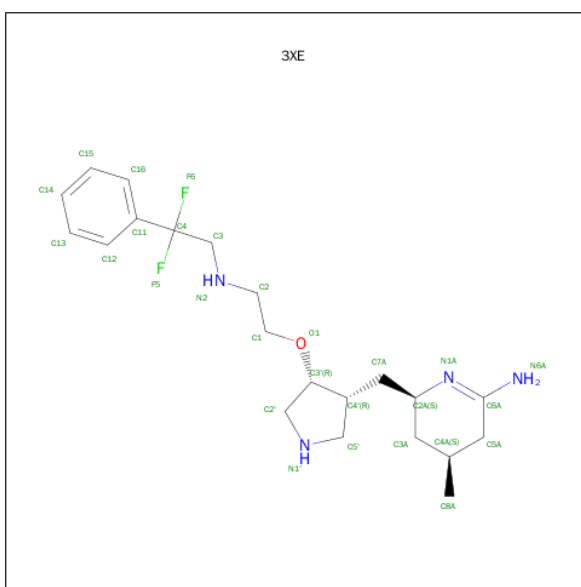
Mol	Chain	Residues	Atoms					ZeroOcc	AltConf
2	A	1	Total	C	Fe	N	O	0	0
			43	34	1	4	4		
2	B	1	Total	C	Fe	N	O	0	0
			43	34	1	4	4		

- Molecule 3 is 5,6,7,8-TETRAHYDROBIOPTERIN (three-letter code: H4B) (formula:  $C_9H_{15}N_5O_3$ ).



Mol	Chain	Residues	Atoms				ZeroOcc	AltConf
3	A	1	Total	C	N	O	0	0
			17	9	5	3		
3	B	1	Total	C	N	O	0	0
			17	9	5	3		

- Molecule 4 is (4S,6S)-6-{[(3R,4R)-4-{2-[(2,2-DIFLUORO-2-PHENYLETHYL)AMINO]ETHOXY}PYRROLIDIN-3-YL]METHYL}-4-METHYL-3,4,5,6-TETRAHYDOPYRIDIN-2-AMINE (three-letter code: 3XE) (formula: C<sub>21</sub>H<sub>32</sub>F<sub>2</sub>N<sub>4</sub>O).



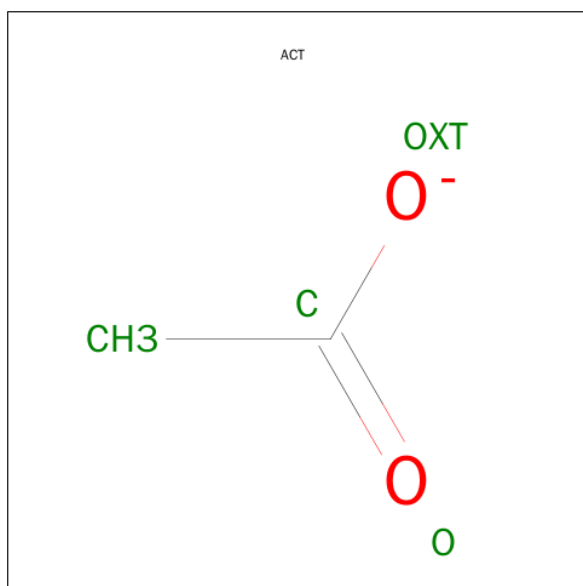
Mol	Chain	Residues	Atoms					ZeroOcc	AltConf
4	A	1	Total	C	F	N	O	0	1
			42	31	4	5	2		

Continued on next page...

Continued from previous page...

Mol	Chain	Residues	Atoms					ZeroOcc	AltConf
4	B	1	Total	C	F	N	O	0	1
			42	31	4	5	2		

- Molecule 5 is ACETATE ION (three-letter code: ACT) (formula:  $C_2H_3O_2$ ).



Mol	Chain	Residues	Atoms			ZeroOcc	AltConf
5	A	1	Total	C	O	0	0
			4	2	2		
5	B	1	Total	C	O	0	0
			4	2	2		

- Molecule 6 is ZINC ION (three-letter code: ZN) (formula:  $Zn$ ).

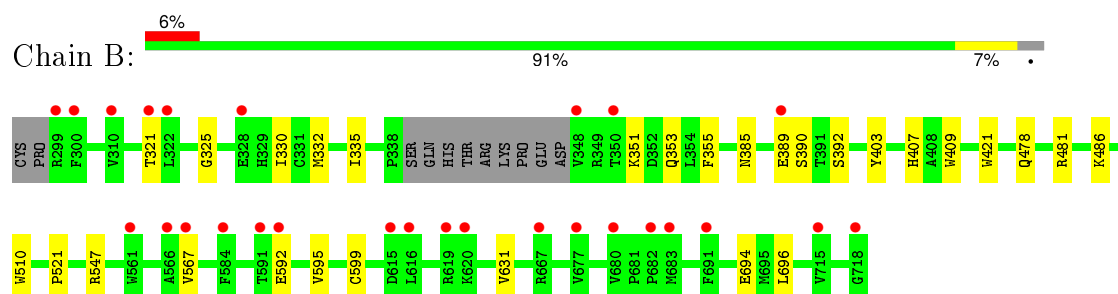
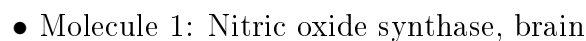
Mol	Chain	Residues	Atoms		ZeroOcc	AltConf
6	A	1	Total	Zn	0	0
			1	1		

- Molecule 7 is water.

Mol	Chain	Residues	Atoms		ZeroOcc	AltConf
7	A	192	Total	O	0	0
			192	192		
7	B	267	Total	O	0	0
			267	267		



- Molecule 1: Nitric oxide synthase, brain



## 4 Data and refinement statistics

Property	Value	Source
Space group	P 21 21 21	Depositor
Cell constants a, b, c, $\alpha$ , $\beta$ , $\gamma$	52.10Å 110.87Å 164.22Å 90.00° 90.00° 90.00°	Depositor
Resolution (Å)	38.11 – 1.81 37.97 – 1.81	Depositor EDS
% Data completeness (in resolution range)	99.0 (38.11-1.81) 99.0 (37.97-1.81)	Depositor EDS
$R_{merge}$	0.05	Depositor
$R_{sym}$	0.05	Depositor
$\langle I/\sigma(I) \rangle$ <sup>1</sup>	2.67 (at 1.81Å)	Xtriage
Refinement program	REFMAC 5.5.0102	Depositor
R, $R_{free}$	0.178 , 0.209 0.190 , 0.218	Depositor DCC
$R_{free}$ test set	4299 reflections (5.21%)	DCC
Wilson B-factor (Å <sup>2</sup> )	29.6	Xtriage
Anisotropy	0.145	Xtriage
Bulk solvent $k_{sol}$ (e/Å <sup>3</sup> ), $B_{sol}$ (Å <sup>2</sup> )	0.37 , 39.4	EDS
Estimated twinning fraction	No twinning to report.	Xtriage
L-test for twinning <sup>2</sup>	$\langle  L  \rangle = 0.49$ , $\langle L^2 \rangle = 0.33$	Xtriage
Outliers	2 of 86831 reflections (0.002%)	Xtriage
$F_o, F_c$ correlation	0.96	EDS
Total number of atoms	7388	wwPDB-VP
Average B, all atoms (Å <sup>2</sup> )	36.0	wwPDB-VP

Xtriage's analysis on translational NCS is as follows: *The largest off-origin peak in the Patterson function is 5.29% of the height of the origin peak. No significant pseudotranslation is detected.*

<sup>1</sup>Intensities estimated from amplitudes.

<sup>2</sup>Theoretical values of  $\langle |L| \rangle$ ,  $\langle L^2 \rangle$  for acentric reflections are 0.5, 0.375 respectively for untwinned datasets, and 0.333, 0.2 for perfectly twinned datasets.



## 5 Model quality

### 5.1 Standard geometry

Bond lengths and bond angles in the following residue types are not validated in this section: H4B, HEM, ZN, 3XE, ACT

The Z score for a bond length (or angle) is the number of standard deviations the observed value is removed from the expected value. A bond length (or angle) with  $|Z| > 5$  is considered an outlier worth inspection. RMSZ is the root-mean-square of all Z scores of the bond lengths (or angles).

Mol	Chain	Bond lengths		Bond angles	
		RMSZ	$\# Z  > 5$	RMSZ	$\# Z  > 5$
1	A	0.59	0/3462	0.63	0/4695
1	B	0.65	0/3467	0.64	0/4699
All	All	0.62	0/6929	0.64	0/9394

There are no bond length outliers.

There are no bond angle outliers.

There are no chirality outliers.

There are no planarity outliers.

### 5.2 Too-close contacts

In the following table, the Non-H and H(model) columns list the number of non-hydrogen atoms and hydrogen atoms in the chain respectively. The H(added) column lists the number of hydrogen atoms added and optimized by MolProbity. The Clashes column lists the number of clashes within the asymmetric unit, whereas Symm-Clashes lists symmetry related clashes.

Mol	Chain	Non-H	H(model)	H(added)	Clashes	Symm-Clashes
1	A	3354	0	3274	29	0
1	B	3362	0	3284	15	0
2	A	43	0	30	4	0
2	B	43	0	30	2	0
3	A	17	0	15	0	0
3	B	17	0	15	0	0
4	A	42	0	26	4	0
4	B	42	0	26	5	0
5	A	4	0	3	0	0
5	B	4	0	3	0	0
6	A	1	0	0	0	0

*Continued on next page...*

*Continued from previous page...*

Mol	Chain	Non-H	H(model)	H(added)	Clashes	Symm-Clashes
7	A	192	0	0	2	0
7	B	267	0	0	1	0
All	All	7388	0	6706	46	0

The all-atom clashscore is defined as the number of clashes found per 1000 atoms (including hydrogen atoms). The all-atom clashscore for this structure is 3.

All (46) close contacts within the same asymmetric unit are listed below, sorted by their clash magnitude.

Atom-1	Atom-2	Interatomic distance (Å)	Clash overlap (Å)
2:B:750:HEM:HBA2	4:B:800[B]:3XE:F5	1.41	1.11
2:A:750:HEM:HBA2	4:A:800[B]:3XE:F5	1.35	1.11
2:A:750:HEM:CBA	4:A:800[B]:3XE:F5	2.07	0.92
2:B:750:HEM:CBA	4:B:800[B]:3XE:F5	2.19	0.81
1:A:592[A]:GLU:OE1	4:A:800[A]:3XE:H16	1.84	0.78
1:A:371:ARG:HH21	1:A:371:ARG:CG	1.99	0.75
2:A:750:HEM:HMC2	2:A:750:HEM:HBC2	1.69	0.73
1:B:592[A]:GLU:OE1	4:B:800[A]:3XE:H16	1.99	0.63
1:A:478:GLN:HB2	1:A:481:ARG:HG3	1.85	0.58
1:A:371:ARG:HG2	1:A:371:ARG:NH2	2.20	0.57
1:A:371:ARG:CG	1:A:371:ARG:NH2	2.63	0.55
1:A:330:ILE:HD11	1:B:696:LEU:HB3	1.88	0.55
1:A:371:ARG:HH21	1:A:371:ARG:HG3	1.71	0.54
1:A:436:HIS:ND1	7:A:1161:HOH:O	2.33	0.53
1:B:478:GLN:HB2	1:B:481:ARG:HG3	1.91	0.53
1:B:325:GLY:O	1:B:332:MET:HG3	2.09	0.52
1:A:380:ARG:HD3	1:A:400:GLU:OE1	2.10	0.52
1:A:609:GLU:HG3	7:A:1014:HOH:O	2.10	0.51
1:A:523:LEU:HD22	1:A:531:PRO:HB2	1.92	0.51
1:A:480:ILE:HD13	1:A:541:VAL:HG13	1.92	0.51
1:A:299:ARG:HG3	1:A:318:LEU:HD21	1.93	0.50
1:B:403:TYR:CE1	1:B:407:HIS:CE1	3.00	0.50
1:A:335:ILE:HD13	1:B:694:GLU:HB3	1.94	0.49
1:B:595:VAL:O	1:B:599:CYS:HB2	2.12	0.48
2:A:750:HEM:C4B	4:A:800[A]:3XE:H14	2.48	0.48
1:A:696:LEU:HB3	1:B:330:ILE:HD11	1.97	0.47
1:B:351:LYS:HE3	1:B:392:SER:OG	2.15	0.47
1:A:455:LEU:HD12	1:A:587:TRP:HB3	1.97	0.46
1:A:361:PHE:O	1:A:364:GLN:HG2	2.16	0.46
1:A:371:ARG:HH21	1:A:371:ARG:HG2	1.73	0.45
1:B:567:VAL:HG23	4:B:800[A]:3XE:H12	1.99	0.44

*Continued on next page...*

Continued from previous page...

Atom-1	Atom-2	Interatomic distance (Å)	Clash overlap (Å)
1:A:522:LEU:HB3	1:A:524:LEU:HD21	2.00	0.44
1:B:355:PHE:CE1	1:B:385:ASN:HB2	2.53	0.44
1:A:694:GLU:HB3	1:B:335:ILE:HD13	2.00	0.43
1:B:409:TRP:CE3	1:B:421:TRP:HA	2.54	0.42
1:B:510:TRP:CE2	1:B:521:PRO:HD3	2.55	0.42
1:A:628:GLN:HG2	1:B:631:VAL:HG11	2.00	0.42
1:A:535:GLN:NE2	1:A:538:PRO:HD3	2.34	0.42
1:A:588:TYR:HE2	1:A:592[B]:GLU:HG2	1.85	0.42
1:A:569:ASN:HD22	1:A:569:ASN:H	1.67	0.41
1:A:321:THR:HG23	1:A:322:LEU:HG	2.03	0.41
1:A:588:TYR:CE2	1:A:592[B]:GLU:HG2	2.56	0.41
1:A:299:ARG:HG3	1:A:318:LEU:CD2	2.50	0.41
4:B:800[A]:3XE:H1	7:B:1141:HOH:O	2.19	0.41
1:A:362:LEU:HD11	1:A:384:VAL:HG21	2.02	0.40
1:A:409:TRP:CE3	1:A:421:TRP:HA	2.56	0.40

There are no symmetry-related clashes.

## 5.3 Torsion angles [i](#)

### 5.3.1 Protein backbone [i](#)

In the following table, the Percentiles column shows the percent Ramachandran outliers of the chain as a percentile score with respect to all X-ray entries followed by that with respect to entries of similar resolution.

The Analysed column shows the number of residues for which the backbone conformation was analysed, and the total number of residues.

Mol	Chain	Analysed	Favoured	Allowed	Outliers	Percentiles	
1	A	410/422 (97%)	404 (98%)	6 (2%)	0	100	100
1	B	411/422 (97%)	406 (99%)	5 (1%)	0	100	100
All	All	821/844 (97%)	810 (99%)	11 (1%)	0	100	100

There are no Ramachandran outliers to report.

### 5.3.2 Protein sidechains [i](#)

In the following table, the Percentiles column shows the percent sidechain outliers of the chain as a percentile score with respect to all X-ray entries followed by that with respect to entries of similar

resolution.

The Analysed column shows the number of residues for which the sidechain conformation was analysed, and the total number of residues.

Mol	Chain	Analysed	Rotameric	Outliers	Percentiles	
1	A	370/377 (98%)	356 (96%)	14 (4%)	40	21
1	B	370/377 (98%)	364 (98%)	6 (2%)	70	59
All	All	740/754 (98%)	720 (97%)	20 (3%)	52	36

All (20) residues with a non-rotameric sidechain are listed below:

Mol	Chain	Res	Type
1	A	350	THR
1	A	352	ASP
1	A	371	ARG
1	A	380	ARG
1	A	436	HIS
1	A	454	ASN
1	A	507	GLN
1	A	514	ARG
1	A	523	LEU
1	A	547	ARG
1	A	552	ASP
1	A	569	ASN
1	A	620	LYS
1	A	645	LYS
1	B	321	THR
1	B	353	GLN
1	B	389	GLU
1	B	390	SER
1	B	486	LYS
1	B	547	ARG

Some sidechains can be flipped to improve hydrogen bonding and reduce clashes. All (12) such sidechains are listed below:

Mol	Chain	Res	Type
1	A	454	ASN
1	A	527	ASN
1	A	535	GLN
1	A	569	ASN
1	A	605	ASN
1	A	697	ASN

*Continued on next page...*

*Continued from previous page...*

Mol	Chain	Res	Type
1	B	364	GLN
1	B	454	ASN
1	B	507	GLN
1	B	601	ASN
1	B	605	ASN
1	B	697	ASN

### 5.3.3 RNA ⓘ

There are no RNA molecules in this entry.

## 5.4 Non-standard residues in protein, DNA, RNA chains ⓘ

There are no non-standard protein/DNA/RNA residues in this entry.

## 5.5 Carbohydrates ⓘ

There are no carbohydrates in this entry.

## 5.6 Ligand geometry ⓘ

Of 11 ligands modelled in this entry, 1 is monoatomic - leaving 10 for Mogul analysis.

In the following table, the Counts columns list the number of bonds (or angles) for which Mogul statistics could be retrieved, the number of bonds (or angles) that are observed in the model and the number of bonds (or angles) that are defined in the chemical component dictionary. The Link column lists molecule types, if any, to which the group is linked. The Z score for a bond length (or angle) is the number of standard deviations the observed value is removed from the expected value. A bond length (or angle) with  $|Z| > 2$  is considered an outlier worth inspection. RMSZ is the root-mean-square of all Z scores of the bond lengths (or angles).

Mol	Type	Chain	Res	Link	Bond lengths			Bond angles		
					Counts	RMSZ	$\# Z  > 2$	Counts	RMSZ	$\# Z  > 2$
2	HEM	A	750	1	30,50,50	2.26	9 (30%)	24,82,82	2.62	10 (41%)
3	H4B	A	760	-	13,18,18	0.92	1 (7%)	11,26,26	2.58	6 (54%)
4	3XE	A	800[A]	-	24,30,30	2.53	3 (12%)	21,41,41	1.79	5 (23%)
4	3XE	A	800[B]	-	24,30,30	2.97	3 (12%)	21,41,41	2.16	6 (28%)
5	ACT	A	860	-	1,3,3	1.42	0	0,3,3	0.00	-
2	HEM	B	750	1	30,50,50	2.07	7 (23%)	24,82,82	2.98	13 (54%)

Mol	Type	Chain	Res	Link	Bond lengths			Bond angles		
					Counts	RMSZ	# Z  > 2	Counts	RMSZ	# Z  > 2
3	H4B	B	760	-	13,18,18	1.19	1 (7%)	11,26,26	2.42	4 (36%)
4	3XE	B	800[A]	-	24,30,30	2.63	3 (12%)	21,41,41	1.97	6 (28%)
4	3XE	B	800[B]	-	24,30,30	2.89	3 (12%)	21,41,41	3.16	6 (28%)
5	ACT	B	860	-	1,3,3	1.64	0	0,3,3	0.00	-

In the following table, the Chirals column lists the number of chiral outliers, the number of chiral centers analysed, the number of these observed in the model and the number defined in the chemical component dictionary. Similar counts are reported in the Torsion and Rings columns. '-' means no outliers of that kind were identified.

Mol	Type	Chain	Res	Link	Chirals	Torsions	Rings
2	HEM	A	750	1	-	0/10/54/54	0/0/8/8
3	H4B	A	760	-	-	0/8/17/17	0/2/2/2
4	3XE	A	800[A]	-	-	0/18/41/41	0/3/3/3
4	3XE	A	800[B]	-	-	0/18/41/41	0/3/3/3
5	ACT	A	860	-	-	0/0/0/0	0/0/0/0
2	HEM	B	750	1	-	0/10/54/54	0/0/8/8
3	H4B	B	760	-	-	0/8/17/17	0/2/2/2
4	3XE	B	800[A]	-	-	0/18/41/41	0/3/3/3
4	3XE	B	800[B]	-	-	0/18/41/41	0/3/3/3
5	ACT	B	860	-	-	0/0/0/0	0/0/0/0

All (30) bond length outliers are listed below:

Mol	Chain	Res	Type	Atoms	Z	Observed(Å)	Ideal(Å)
4	A	800[B]	3XE	F5-C4	-9.38	1.30	1.37
4	B	800[B]	3XE	F5-C4	-9.12	1.31	1.37
4	A	800[B]	3XE	F6-C4	-7.60	1.32	1.37
4	B	800[B]	3XE	F6-C4	-7.56	1.32	1.37
4	A	800[A]	3XE	C2A-N1A	-7.53	1.36	1.47
4	A	800[B]	3XE	C2A-N1A	-7.53	1.36	1.47
4	B	800[A]	3XE	F5-C4	-7.46	1.32	1.37
4	B	800[A]	3XE	C2A-N1A	-7.04	1.36	1.47
4	B	800[B]	3XE	C2A-N1A	-7.04	1.36	1.47
4	B	800[A]	3XE	F6-C4	-7.02	1.32	1.37
4	A	800[A]	3XE	F5-C4	-6.87	1.32	1.37
4	A	800[A]	3XE	F6-C4	-6.40	1.33	1.37
2	A	750	HEM	C3D-C4D	-6.12	1.43	1.51
2	A	750	HEM	C3B-C4B	-5.98	1.46	1.51
2	B	750	HEM	C3D-C4D	-5.95	1.43	1.51
2	B	750	HEM	C3B-C4B	-4.42	1.47	1.51
2	A	750	HEM	C2C-C1C	-3.82	1.45	1.52

Continued on next page...

*Continued from previous page...*

Mol	Chain	Res	Type	Atoms	Z	Observed(Å)	Ideal(Å)
2	B	750	HEM	C2C-C1C	-3.44	1.46	1.52
2	B	750	HEM	C2D-C1D	-2.65	1.43	1.51
2	A	750	HEM	C2D-C1D	-2.26	1.44	1.51
2	A	750	HEM	C2B-C1B	-2.16	1.44	1.51
2	B	750	HEM	C2B-C1B	-2.08	1.45	1.51
2	B	750	HEM	CMA-C3A	2.08	1.55	1.51
3	A	760	H4B	C4-N3	2.08	1.37	1.33
3	B	760	H4B	C4-N3	2.18	1.37	1.33
2	A	750	HEM	C3B-CAB	2.24	1.55	1.51
2	A	750	HEM	C1C-NC	2.28	1.38	1.36
2	A	750	HEM	C3C-CAC	2.50	1.56	1.51
2	A	750	HEM	FE-NC	3.35	2.09	1.95
2	B	750	HEM	FE-NC	3.69	2.10	1.95

All (56) bond angle outliers are listed below:

Mol	Chain	Res	Type	Atoms	Z	Observed(°)	Ideal(°)
4	B	800[B]	3XE	F5-C4-C11	-10.18	106.21	110.23
2	B	750	HEM	CBA-CAA-C2A	-6.53	100.82	112.53
2	A	750	HEM	CBD-CAD-C3D	-4.57	100.25	113.55
2	A	750	HEM	CBA-CAA-C2A	-4.35	104.73	112.53
4	A	800[B]	3XE	F5-C4-C11	-4.31	108.53	110.23
2	B	750	HEM	CAA-C2A-C1A	-3.92	122.75	127.01
4	B	800[A]	3XE	C4'-C7A-C2A	-3.61	107.84	114.72
4	B	800[B]	3XE	C4'-C7A-C2A	-3.61	107.84	114.72
2	B	750	HEM	CBD-CAD-C3D	-3.55	103.21	113.55
3	A	760	H4B	N3-C2-N1	-3.53	119.74	125.53
2	B	750	HEM	C3C-CAC-CBC	-3.39	119.25	124.46
4	A	800[A]	3XE	C4'-C7A-C2A	-3.32	108.40	114.72
4	A	800[B]	3XE	C4'-C7A-C2A	-3.32	108.40	114.72
3	B	760	H4B	N3-C2-N1	-3.26	120.19	125.53
2	A	750	HEM	CAA-C2A-C1A	-3.09	123.65	127.01
4	A	800[A]	3XE	F5-C4-C11	-2.67	109.18	110.23
4	B	800[A]	3XE	F5-C4-C11	-2.61	109.20	110.23
2	B	750	HEM	C3B-C4B-NB	-2.37	107.09	111.63
2	B	750	HEM	CMA-C3A-C4A	-2.10	124.89	128.36
2	B	750	HEM	C2C-C1C-CHC	2.20	127.03	123.68
4	B	800[A]	3XE	F6-C4-C11	2.22	111.11	110.23
4	B	800[B]	3XE	C2-N2-C3	2.28	118.30	113.39
2	A	750	HEM	C2D-C3D-C4D	2.38	105.53	101.50
4	A	800[B]	3XE	F6-C4-C3	2.41	111.66	108.69
4	A	800[B]	3XE	C2-N2-C3	2.49	118.75	113.39

*Continued on next page...*

*Continued from previous page...*

Mol	Chain	Res	Type	Atoms	Z	Observed(°)	Ideal(°)
2	B	750	HEM	CMD-C2D-C3D	2.58	125.76	114.35
2	B	750	HEM	C3B-C4B-CHC	2.79	127.10	123.16
2	A	750	HEM	CMD-C2D-C3D	2.80	126.72	114.35
3	A	760	H4B	N2-C2-N3	2.82	121.87	117.20
2	A	750	HEM	C3B-C4B-CHC	2.91	127.26	123.16
3	A	760	H4B	C4-N3-C2	2.93	120.00	115.94
3	B	760	H4B	C2-N1-C8A	3.00	121.29	114.54
3	B	760	H4B	C4-N3-C2	3.08	120.22	115.94
4	B	800[A]	3XE	C3A-C4A-C5A	3.14	112.74	109.69
4	B	800[B]	3XE	C3A-C4A-C5A	3.14	112.74	109.69
3	A	760	H4B	C4A-C8A-N8	3.18	122.18	118.43
4	A	800[A]	3XE	C3A-C2A-N1A	3.25	114.75	108.19
4	A	800[B]	3XE	C3A-C2A-N1A	3.25	114.75	108.19
4	B	800[A]	3XE	C2-N2-C3	3.44	120.79	113.39
4	A	800[A]	3XE	C2-N2-C3	3.47	120.87	113.39
3	A	760	H4B	C2-N1-C8A	3.71	122.87	114.54
4	A	800[A]	3XE	F6-C4-C11	3.75	111.71	110.23
3	A	760	H4B	C4-C4A-C8A	4.32	118.47	114.56
2	A	750	HEM	CMB-C2B-C3B	4.32	127.31	116.53
2	B	750	HEM	CAD-C3D-C4D	4.35	127.80	112.47
2	A	750	HEM	CAD-C3D-C4D	4.38	127.91	112.47
2	A	750	HEM	CMC-C2C-C3C	4.47	127.69	116.53
2	B	750	HEM	CMC-C2C-C3C	4.52	127.81	116.53
4	B	800[A]	3XE	C3A-C2A-N1A	4.62	117.51	108.19
4	B	800[B]	3XE	C3A-C2A-N1A	4.62	117.51	108.19
2	A	750	HEM	CAD-C3D-C2D	4.62	126.51	113.22
2	B	750	HEM	CAD-C3D-C2D	4.98	127.54	113.22
2	B	750	HEM	CMB-C2B-C3B	5.02	129.06	116.53
3	B	760	H4B	C4-C4A-C8A	5.30	119.36	114.56
4	A	800[B]	3XE	F6-C4-C11	5.67	112.47	110.23
4	B	800[B]	3XE	F6-C4-C11	6.36	112.74	110.23

There are no chirality outliers.

There are no torsion outliers.

There are no ring outliers.

6 monomers are involved in 10 short contacts:

Mol	Chain	Res	Type	Clashes	Symm-Clashes
2	A	750	HEM	4	0
4	A	800[A]	3XE	2	0
4	A	800[B]	3XE	2	0

*Continued on next page...*



*Continued from previous page...*

Mol	Chain	Res	Type	Clashes	Symm-Clashes
2	B	750	HEM	2	0
4	B	800[A]	3XE	3	0
4	B	800[B]	3XE	2	0

## 5.7 Other polymers [i](#)

There are no such residues in this entry.

## 5.8 Polymer linkage issues [i](#)

There are no chain breaks in this entry.

## 6 Fit of model and data

### 6.1 Protein, DNA and RNA chains

In the following table, the column labelled ‘#RSRZ> 2’ contains the number (and percentage) of RSRZ outliers, followed by percent RSRZ outliers for the chain as percentile scores relative to all X-ray entries and entries of similar resolution. The OWAB column contains the minimum, median, 95<sup>th</sup> percentile and maximum values of the occupancy-weighted average B-factor per residue. The column labelled ‘Q< 0.9’ lists the number of (and percentage) of residues with an average occupancy less than 0.9.

Mol	Chain	Analysed	<RSRZ>	#RSRZ>2	OWAB(Å <sup>2</sup> )	Q<0.9
1	A	409/422 (96%)	0.68	50 (12%) <b>5</b> <b>4</b>	21, 39, 67, 83	0
1	B	411/422 (97%)	0.21	27 (6%) <b>22</b> <b>17</b>	20, 31, 52, 65	0
All	All	820/844 (97%)	0.45	77 (9%) <b>11</b> <b>8</b>	20, 35, 62, 83	0

All (77) RSRZ outliers are listed below:

Mol	Chain	Res	Type	RSRZ
1	A	488	PRO	7.6
1	B	300	PHE	7.3
1	A	348	VAL	6.5
1	A	355	PHE	5.7
1	A	716	TRP	5.1
1	A	351	LYS	5.0
1	A	715	VAL	4.9
1	A	352	ASP	4.5
1	A	350	THR	4.1
1	A	713	THR	4.1
1	B	348	VAL	4.1
1	B	321	THR	4.0
1	A	299	ARG	3.9
1	A	392	SER	3.9
1	A	300	PHE	3.9
1	B	619	ARG	3.8
1	A	486	LYS	3.7
1	A	321	THR	3.6
1	A	507	GLN	3.6
1	A	491	SER	3.5
1	A	489	ASP	3.4
1	A	490	GLY	3.4
1	A	567	VAL	3.3
1	A	619	ARG	3.2

*Continued on next page...*

*Continued from previous page...*

Mol	Chain	Res	Type	RSRZ
1	B	299	ARG	3.2
1	A	469	LYS	3.1
1	A	680	VAL	3.1
1	B	718	GLY	3.0
1	A	712	ASN	3.0
1	A	388	ILE	3.0
1	B	615	ASP	3.0
1	A	386	LYS	2.9
1	B	680	VAL	2.8
1	A	370	LYS	2.8
1	A	389	GLU	2.7
1	A	390	SER	2.7
1	A	677	VAL	2.7
1	B	667	ARG	2.6
1	A	480	ILE	2.6
1	A	592[A]	GLU	2.6
1	B	620	LYS	2.6
1	A	511	LYS	2.5
1	B	350	THR	2.5
1	A	678	TRP	2.5
1	B	567	VAL	2.4
1	A	353	GLN	2.4
1	A	385	ASN	2.4
1	A	706	TYR	2.4
1	B	677	VAL	2.4
1	B	322	LEU	2.3
1	B	566	ALA	2.3
1	A	591	THR	2.3
1	B	616	LEU	2.3
1	B	691	PHE	2.3
1	A	679	ILE	2.3
1	A	503	GLU	2.3
1	A	682	PRO	2.3
1	B	389	GLU	2.2
1	A	645	LYS	2.2
1	B	591	THR	2.2
1	A	504	ILE	2.2
1	A	514	ARG	2.2
1	B	683	MET	2.2
1	A	552	ASP	2.2
1	A	349	ARG	2.2
1	B	310	VAL	2.1

*Continued on next page...*

*Continued from previous page...*

Mol	Chain	Res	Type	RSRZ
1	B	584	PHE	2.1
1	B	682	PRO	2.1
1	B	328	GLU	2.1
1	A	588	TYR	2.1
1	B	715	VAL	2.1
1	B	592[A]	GLU	2.1
1	A	467	ASP	2.1
1	B	561	TRP	2.0
1	A	714	HIS	2.0
1	A	487	GLN	2.0
1	A	566	ALA	2.0

## 6.2 Non-standard residues in protein, DNA, RNA chains [i](#)

There are no non-standard protein/DNA/RNA residues in this entry.

## 6.3 Carbohydrates [i](#)

There are no carbohydrates in this entry.

## 6.4 Ligands [i](#)

In the following table, the Atoms column lists the number of modelled atoms in the group and the number defined in the chemical component dictionary. LLDF column lists the quality of electron density of the group with respect to its neighbouring residues in protein, DNA or RNA chains. The B-factors column lists the minimum, median, 95<sup>th</sup> percentile and maximum values of B factors of atoms in the group. The column labelled 'Q< 0.9' lists the number of atoms with occupancy less than 0.9.

Mol	Type	Chain	Res	Atoms	RSCC	RSR	LLDF	B-factors(Å <sup>2</sup> )	Q<0.9
5	ACT	A	860	4/4	0.97	0.18	2.64	46,47,48,48	0
4	3XE	A	800[A]	28/28	0.80	0.28	1.14	39,44,48,48	14
4	3XE	A	800[B]	28/28	0.80	0.28	1.07	37,44,48,48	14
5	ACT	B	860	4/4	0.95	0.10	0.75	33,38,38,38	0
3	H4B	B	760	17/17	0.97	0.15	0.58	20,24,27,28	0
2	HEM	B	750	43/43	0.98	0.17	0.51	18,23,30,32	0
4	3XE	B	800[B]	28/28	0.90	0.20	0.36	35,38,41,43	14
4	3XE	B	800[A]	28/28	0.90	0.20	0.32	35,37,39,41	14
3	H4B	A	760	17/17	0.96	0.14	0.28	23,26,29,31	0
2	HEM	A	750	43/43	0.97	0.18	0.23	22,25,33,35	0
6	ZN	A	900	1/1	1.00	0.06	-1.39	29,29,29,29	0

## 6.5 Other polymers

There are no such residues in this entry.