



Full wwPDB X-ray Structure Validation Report ⓘ

Feb 1, 2016 – 04:40 AM GMT

PDB ID : 2NRY
Title : Crystal structure of IRAK-4
Authors : Wang, Z.; Liu, J.; Walker, N.P.C.
Deposited on : 2006-11-02
Resolution : 2.15 Å(reported)

This is a Full wwPDB X-ray Structure Validation Report for a publicly released PDB entry.
We welcome your comments at validation@mail.wwpdb.org
A user guide is available at
<http://wwpdb.org/validation/2016/XrayValidationReportHelp>
with specific help available everywhere you see the ⓘ symbol.

The following versions of software and data (see [references ⓘ](#)) were used in the production of this report:

MolProbity : 4.02b-467
Mogul : 1.7 (RC4), CSD as536be (2015)
Xtriage (Phenix) : 1.9-1692
EDS : rb-20026688
Percentile statistics : 20151230.v01 (using entries in the PDB archive December 30th 2015)
Refmac : 5.8.0135
CCP4 : 6.5.0
Ideal geometry (proteins) : Engh & Huber (2001)
Ideal geometry (DNA, RNA) : Parkinson et al. (1996)
Validation Pipeline (wwPDB-VP) : trunk26865

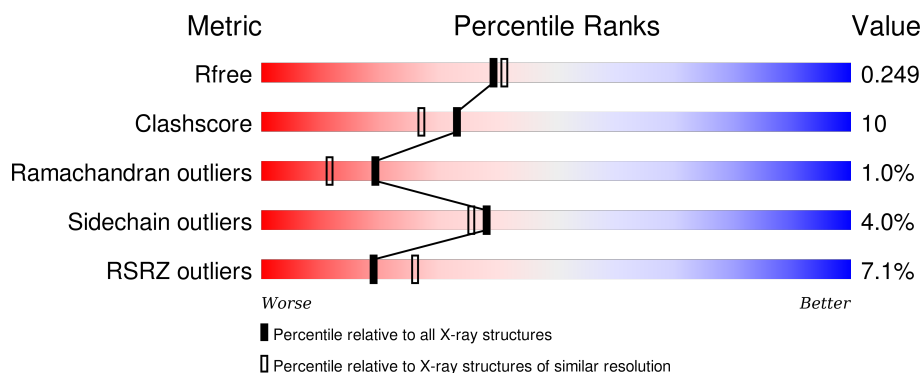
1 Overall quality at a glance

The following experimental techniques were used to determine the structure:

X-RAY DIFFRACTION

The reported resolution of this entry is 2.15 Å.

Percentile scores (ranging between 0-100) for global validation metrics of the entry are shown in the following graphic. The table shows the number of entries on which the scores are based.



Metric	Whole archive (#Entries)	Similar resolution (#Entries, resolution range(Å))
R_{free}	91344	1045 (2.16-2.16)
Clashscore	102246	1152 (2.16-2.16)
Ramachandran outliers	100387	1131 (2.16-2.16)
Sidechain outliers	100360	1131 (2.16-2.16)
RSRZ outliers	91569	1050 (2.16-2.16)

The table below summarises the geometric issues observed across the polymeric chains and their fit to the electron density. The red, orange, yellow and green segments on the lower bar indicate the fraction of residues that contain outliers for ≥ 3 , 2, 1 and 0 types of geometric quality criteria. A grey segment represents the fraction of residues that are not modelled. The numeric value for each fraction is indicated below the corresponding segment, with a dot representing fractions $\leq 5\%$. The upper red bar (where present) indicates the fraction of residues that have poor fit to the electron density. The numeric value is given above the bar.

Mol	Chain	Length	Quality of chain
1	A	307	<div> <div>6%</div> <div> <div></div> <div>74%</div> <div>18%</div> <div>• 7%</div> </div> </div>
1	B	307	<div> <div>4%</div> <div> <div></div> <div>73%</div> <div>19%</div> <div>• 7%</div> </div> </div>
1	C	307	<div> <div>7%</div> <div> <div></div> <div>73%</div> <div>17%</div> <div>• 8%</div> </div> </div>
1	D	307	<div> <div>10%</div> <div> <div></div> <div>74%</div> <div>16%</div> <div>• 8%</div> </div> </div>

2 Entry composition

There are 3 unique types of molecules in this entry. The entry contains 9516 atoms, of which 0 are hydrogens and 0 are deuteriums.

In the tables below, the ZeroOcc column contains the number of atoms modelled with zero occupancy, the AltConf column contains the number of residues with at least one atom in alternate conformation and the Trace column contains the number of residues modelled with at most 2 atoms.

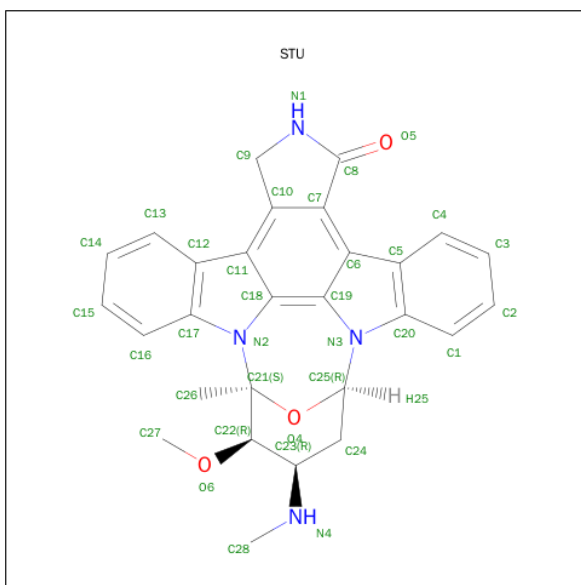
- Molecule 1 is a protein called interleukin-1 receptor-associated kinase 4.

Mol	Chain	Residues	Atoms						ZeroOcc	AltConf	Trace
1	A	287	Total	C	N	O	P	S	0	1	0
			2260	1420	381	444	1	14			
1	B	287	Total	C	N	O	P	S	0	0	0
			2259	1420	381	443	1	14			
1	C	281	Total	C	N	O	P	S	0	1	0
			2221	1397	376	432	1	15			
1	D	283	Total	C	N	O	P	S	0	1	0
			2234	1404	377	437	1	15			

There are 4 discrepancies between the modelled and reference sequences:

Chain	Residue	Modelled	Actual	Comment	Reference
A	345	TPO	THR	MODIFIED RESIDUE	UNP Q9NWZ3
B	345	TPO	THR	MODIFIED RESIDUE	UNP Q9NWZ3
C	345	TPO	THR	MODIFIED RESIDUE	UNP Q9NWZ3
D	345	TPO	THR	MODIFIED RESIDUE	UNP Q9NWZ3

- Molecule 2 is STAUROSPORINE (three-letter code: STU) (formula: C₂₈H₂₆N₄O₃).



Mol	Chain	Residues	Atoms				ZeroOcc	AltConf
2	D	1	Total	C	N	O	0	0
			35	28	4	3		
2	B	1	Total	C	N	O	0	0
			35	28	4	3		
2	C	1	Total	C	N	O	0	0
			35	28	4	3		
2	A	1	Total	C	N	O	0	0
			35	28	4	3		

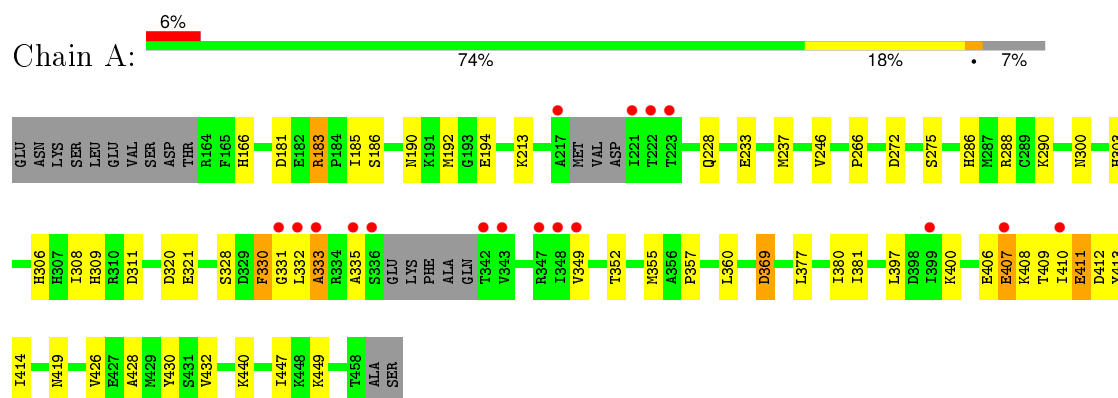
- Molecule 3 is water.

Mol	Chain	Residues	Atoms		ZeroOcc	AltConf
3	A	131	Total	O	0	0
			131	131		
3	B	132	Total	O	0	0
			132	132		
3	C	65	Total	O	0	0
			65	65		
3	D	74	Total	O	0	0
			74	74		

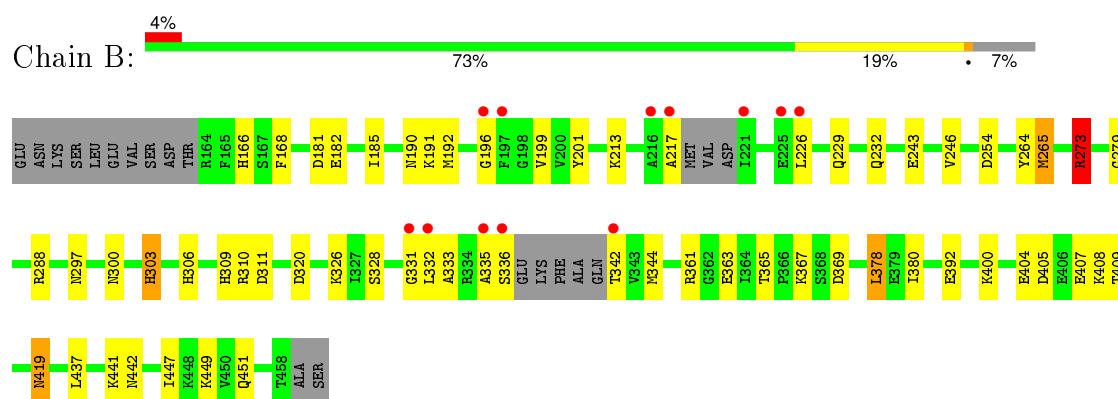
3 Residue-property plots [i](#)

These plots are drawn for all protein, RNA and DNA chains in the entry. The first graphic for a chain summarises the proportions of errors displayed in the second graphic. The second graphic shows the sequence view annotated by issues in geometry and electron density. Residues are color-coded according to the number of geometric quality criteria for which they contain at least one outlier: green = 0, yellow = 1, orange = 2 and red = 3 or more. A red dot above a residue indicates a poor fit to the electron density ($RSRZ > 2$). Stretches of 2 or more consecutive residues without any outlier are shown as a green connector. Residues present in the sample, but not in the model, are shown in grey.

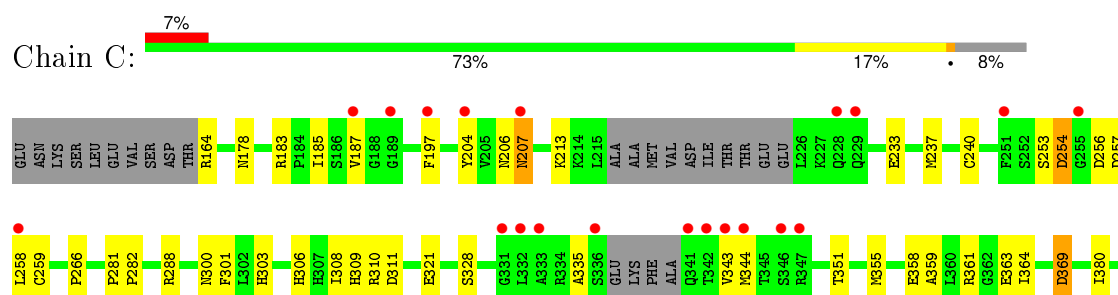
- Molecule 1: interleukin-1 receptor-associated kinase 4



- Molecule 1: interleukin-1 receptor-associated kinase 4

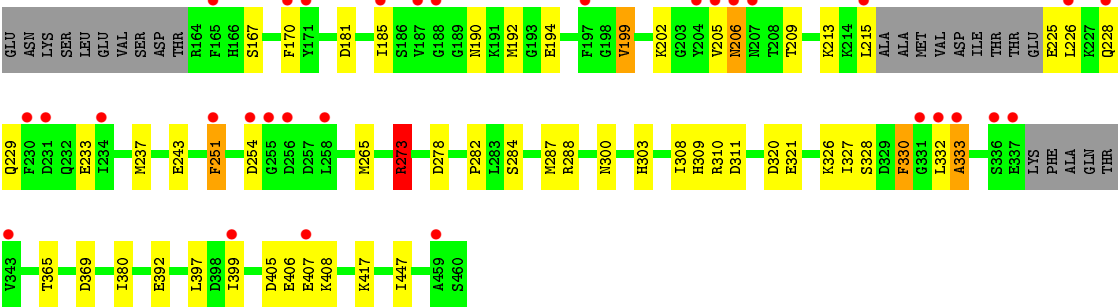


- Molecule 1: interleukin-1 receptor-associated kinase 4





● Molecule 1: interleukin-1 receptor-associated kinase 4



4 Data and refinement statistics

Property	Value	Source
Space group	C 1 2 1	Depositor
Cell constants a, b, c, α , β , γ	141.50 Å 139.75 Å 87.66 Å 90.00° 123.76° 90.00°	Depositor
Resolution (Å)	90.00 – 2.15 90.00 – 2.13	Depositor EDS
% Data completeness (in resolution range)	99.8 (90.00-2.15) 99.3 (90.00-2.13)	Depositor EDS
R_{merge}	(Not available)	Depositor
R_{sym}	0.06	Depositor
$\langle I/\sigma(I) \rangle$ ¹	1.89 (at 2.12 Å)	Xtriage
Refinement program	REFMAC 5.2.0019	Depositor
R, R_{free}	0.209 , 0.261 0.202 , 0.249	Depositor DCC
R_{free} test set	3845 reflections (5.28%)	DCC
Wilson B-factor (Å ²)	34.3	Xtriage
Anisotropy	0.387	Xtriage
Bulk solvent k_{sol} (e/Å ³), B_{sol} (Å ²)	0.37 , 52.0	EDS
Estimated twinning fraction	No twinning to report.	Xtriage
L-test for twinning ²	$\langle L \rangle = 0.50$, $\langle L^2 \rangle = 0.33$	Xtriage
Outliers	1 of 78792 reflections (0.001%)	Xtriage
F_o, F_c correlation	0.95	EDS
Total number of atoms	9516	wwPDB-VP
Average B, all atoms (Å ²)	39.0	wwPDB-VP

Xtriage's analysis on translational NCS is as follows: *The largest off-origin peak in the Patterson function is 19.18% of the height of the origin peak. No significant pseudotranslation is detected.*

¹Intensities estimated from amplitudes.

²Theoretical values of $\langle |L| \rangle$, $\langle L^2 \rangle$ for acentric reflections are 0.5, 0.375 respectively for untwinned datasets, and 0.333, 0.2 for perfectly twinned datasets.

5 Model quality

5.1 Standard geometry

Bond lengths and bond angles in the following residue types are not validated in this section: TPO, STU

The Z score for a bond length (or angle) is the number of standard deviations the observed value is removed from the expected value. A bond length (or angle) with $|Z| > 5$ is considered an outlier worth inspection. RMSZ is the root-mean-square of all Z scores of the bond lengths (or angles).

Mol	Chain	Bond lengths		Bond angles	
		RMSZ	$\# Z > 5$	RMSZ	$\# Z > 5$
1	A	0.91	0/2290	0.88	5/3085 (0.2%)
1	B	0.92	0/2284	0.93	5/3077 (0.2%)
1	C	0.82	0/2251	0.78	2/3030 (0.1%)
1	D	0.80	0/2264	0.86	4/3047 (0.1%)
All	All	0.86	0/9089	0.86	16/12239 (0.1%)

There are no bond length outliers.

All (16) bond angle outliers are listed below:

Mol	Chain	Res	Type	Atoms	Z	Observed(°)	Ideal(°)
1	B	273	ARG	NE-CZ-NH2	-18.99	110.81	120.30
1	D	273	ARG	NE-CZ-NH2	-15.98	112.31	120.30
1	A	183	ARG	NE-CZ-NH2	-12.79	113.91	120.30
1	B	273	ARG	NE-CZ-NH1	11.92	126.26	120.30
1	D	273	ARG	NE-CZ-NH1	9.81	125.21	120.30
1	B	273	ARG	CG-CD-NE	-9.42	92.01	111.80
1	D	273	ARG	CG-CD-NE	-7.89	95.23	111.80
1	A	183	ARG	NE-CZ-NH1	7.72	124.16	120.30
1	C	369	ASP	CB-CG-OD1	7.17	124.75	118.30
1	B	273	ARG	CD-NE-CZ	6.81	133.13	123.60
1	A	369	ASP	CB-CG-OD1	5.92	123.63	118.30
1	D	273	ARG	CD-NE-CZ	5.54	131.35	123.60
1	A	369	ASP	CB-CG-OD2	-5.32	113.52	118.30
1	B	265	MET	CG-SD-CE	-5.25	91.79	100.20
1	C	388	ASP	CB-CG-OD1	5.16	122.95	118.30
1	A	272	ASP	CB-CG-OD2	5.08	122.88	118.30

There are no chirality outliers.

There are no planarity outliers.

5.2 Too-close contacts ⓘ

In the following table, the Non-H and H(model) columns list the number of non-hydrogen atoms and hydrogen atoms in the chain respectively. The H(added) column lists the number of hydrogen atoms added and optimized by MolProbity. The Clashes column lists the number of clashes within the asymmetric unit, whereas Symm-Clashes lists symmetry related clashes.

Mol	Chain	Non-H	H(model)	H(added)	Clashes	Symm-Clashes
1	A	2260	0	2233	47	0
1	B	2259	0	2232	54	0
1	C	2221	0	2198	39	0
1	D	2234	0	2205	43	0
2	A	35	0	26	2	0
2	B	35	0	26	2	0
2	C	35	0	26	1	0
2	D	35	0	26	1	0
3	A	131	0	0	4	5
3	B	132	0	0	5	5
3	C	65	0	0	3	1
3	D	74	0	0	2	2
All	All	9516	0	8972	186	7

The all-atom clashscore is defined as the number of clashes found per 1000 atoms (including hydrogen atoms). The all-atom clashscore for this structure is 10.

All (186) close contacts within the same asymmetric unit are listed below, sorted by their clash magnitude.

Atom-1	Atom-2	Interatomic distance (Å)	Clash overlap (Å)
1:C:361:ARG:HD2	3:C:552:HOH:O	1.37	1.24
1:D:265:MET:CE	1:D:326:LYS:HG3	1.74	1.17
1:B:265:MET:CE	1:B:326:LYS:HG3	1.73	1.16
1:D:265:MET:HE1	1:D:326:LYS:HG3	1.21	1.08
1:B:265:MET:HE2	1:B:326:LYS:CG	1.83	1.07
1:B:265:MET:HE2	1:B:326:LYS:HG3	1.02	1.00
1:A:352:THR:HA	1:A:355:MET:HE2	1.47	0.97
1:B:265:MET:HE1	1:B:320:ASP:HB3	1.54	0.88
1:A:309:HIS:HD2	1:A:311:ASP:H	1.21	0.86
1:C:309:HIS:HD2	1:C:311:ASP:H	1.24	0.83
1:C:266:PRO:HG2	1:C:321:GLU:HG3	1.61	0.82
1:D:265:MET:HE1	1:D:326:LYS:CG	2.09	0.80
1:D:309:HIS:HD2	1:D:311:ASP:H	1.26	0.80
1:B:265:MET:CE	1:B:320:ASP:HB3	2.13	0.79
1:B:192:MET:CE	1:B:264:TYR:HE2	1.97	0.78

Continued on next page...

Continued from previous page...

Atom-1	Atom-2	Interatomic distance (Å)	Clash overlap (Å)
1:D:265:MET:HE2	1:D:326:LYS:HG3	1.66	0.77
1:B:309:HIS:HD2	1:B:311:ASP:H	1.32	0.77
1:C:361:ARG:HG2	1:C:361:ARG:HH11	1.49	0.77
2:B:502:STU:H261	2:B:502:STU:H16	1.65	0.77
1:B:297:ASN:ND2	1:B:451:GLN:HE21	1.83	0.76
1:D:205:VAL:O	1:D:206:ASN:HB3	1.87	0.75
1:C:204:TYR:CE2	1:C:207:ASN:HA	2.22	0.75
1:A:166:HIS:HE1	3:A:558:HOH:O	1.67	0.75
1:D:265:MET:CE	1:D:326:LYS:CG	2.63	0.73
1:C:361:ARG:HH11	1:C:361:ARG:CG	1.97	0.73
1:D:284:SER:H	1:D:287[A]:MET:HE3	1.54	0.72
1:D:303:HIS:HE1	1:D:369:ASP:OD2	1.73	0.71
1:C:405:ASP:O	1:C:407:GLU:N	2.24	0.70
1:A:330:PHE:HB3	1:A:333:ALA:HB2	1.73	0.69
1:A:410:ILE:HG13	1:A:411:GLU:N	2.08	0.68
1:B:303:HIS:HE1	1:B:369:ASP:OD2	1.76	0.68
1:C:363:GLU:OE2	1:C:441:LYS:HE2	1.94	0.68
2:D:501:STU:H16	2:D:501:STU:H261	1.75	0.67
1:B:182:GLU:OE1	1:B:201:TYR:OH	2.10	0.66
1:C:343:VAL:HB	1:C:364:ILE:HB	1.77	0.66
1:A:181:ASP:OD1	1:A:183:ARG:CD	2.45	0.65
1:C:411:GLU:OE2	1:C:427:GLU:OE2	2.14	0.65
1:B:192:MET:HE3	1:B:264:TYR:HE2	1.62	0.64
1:D:205:VAL:O	1:D:206:ASN:CB	2.45	0.64
1:C:411:GLU:HA	1:C:414:ILE:CD1	2.28	0.64
1:A:406:GLU:O	1:A:406:GLU:HG2	1.98	0.64
1:B:243:GLU:OE1	3:B:556:HOH:O	2.15	0.64
1:C:309:HIS:CD2	1:C:311:ASP:H	2.11	0.64
1:A:352:THR:HA	1:A:355:MET:CE	2.27	0.63
1:A:303:HIS:HE1	1:A:369:ASP:OD2	1.82	0.62
2:A:504:STU:H261	2:A:504:STU:H16	1.80	0.62
1:C:403:ILE:HD13	1:C:408:LYS:HB2	1.80	0.62
1:D:194:GLU:HG2	1:D:199:VAL:HB	1.81	0.62
1:A:181:ASP:OD1	1:A:183:ARG:HD3	2.00	0.61
1:A:352:THR:CA	1:A:355:MET:HE2	2.27	0.60
1:B:192:MET:HE1	1:B:264:TYR:HE2	1.66	0.60
1:B:217:ALA:HB2	1:B:226:LEU:HD22	1.82	0.60
1:A:308:ILE:O	1:A:333:ALA:HA	2.01	0.60
1:A:309:HIS:CD2	1:A:311:ASP:H	2.12	0.59
1:B:265:MET:CE	1:B:326:LYS:CG	2.57	0.59
1:C:233:GLU:O	1:C:237:MET:HG2	2.02	0.59

Continued on next page...

Continued from previous page...

Atom-1	Atom-2	Interatomic distance (Å)	Clash overlap (Å)
1:D:226:LEU:HA	1:D:229:GLN:OE1	2.02	0.59
1:A:246:VAL:HG21	1:A:328:SER:HB3	1.85	0.58
1:B:297:ASN:ND2	1:B:451:GLN:NE2	2.52	0.58
1:B:400:LYS:O	1:B:404:GLU:HG3	2.02	0.58
1:A:309:HIS:HE1	1:A:328:SER:O	1.87	0.57
1:D:185:ILE:HD11	1:D:192:MET:HG2	1.87	0.57
1:A:408:LYS:HG2	1:A:413:TYR:HE2	1.69	0.57
1:B:196:GLY:HA3	1:B:213:LYS:HE3	1.86	0.57
1:C:361:ARG:NH1	1:C:361:ARG:CG	2.62	0.57
1:A:309:HIS:HD2	1:A:311:ASP:N	1.99	0.56
1:B:246:VAL:HG21	1:B:328:SER:HB3	1.87	0.56
1:C:361:ARG:CD	3:C:552:HOH:O	2.17	0.56
1:C:288:ARG:HB3	1:C:380:ILE:HG23	1.86	0.56
1:A:377:LEU:O	1:A:381:ILE:HG13	2.05	0.56
1:B:232:GLN:HG3	1:B:331:GLY:HA2	1.87	0.55
1:D:407:GLU:O	1:D:408:LYS:HG3	2.06	0.55
1:A:303:HIS:HD2	3:A:535:HOH:O	1.90	0.55
1:C:303:HIS:HE1	1:C:369:ASP:OD2	1.89	0.55
1:B:332:LEU:CD2	3:B:574:HOH:O	2.54	0.55
1:A:233:GLU:O	1:A:237:MET:HG2	2.07	0.54
1:A:410:ILE:HD12	1:A:426:VAL:HG12	1.88	0.54
1:A:410:ILE:HG13	1:A:411:GLU:H	1.72	0.54
1:A:266:PRO:HG2	1:A:321:GLU:HG2	1.89	0.54
1:D:284:SER:H	1:D:287[A]:MET:CE	2.20	0.54
1:D:332:LEU:HB2	3:D:557:HOH:O	2.06	0.54
1:A:300:ASN:HA	1:A:447:ILE:HG21	1.90	0.53
1:A:233:GLU:HA	1:A:331:GLY:HA2	1.89	0.53
1:D:213:LYS:HE3	1:D:215:LEU:HD21	1.91	0.53
1:A:181:ASP:OD1	1:A:183:ARG:HD2	2.08	0.52
1:B:192:MET:HE3	1:B:264:TYR:CE2	2.43	0.52
1:B:306:HIS:O	1:B:335:ALA:HA	2.09	0.52
1:A:185:ILE:HD12	1:A:192:MET:HG2	1.92	0.52
1:D:327:ILE:HG22	1:D:330:PHE:HE1	1.75	0.52
1:B:181:ASP:HB3	1:B:190:ASN:HD22	1.75	0.52
1:B:309:HIS:HE1	1:B:328:SER:O	1.92	0.51
1:D:205:VAL:O	1:D:205:VAL:HG13	2.09	0.51
1:A:400:LYS:HG2	1:A:400:LYS:O	2.10	0.51
1:C:240:CYS:HA	1:C:301:PHE:HE2	1.76	0.51
1:D:273:ARG:NH2	3:D:528:HOH:O	2.40	0.51
1:B:265:MET:HE1	1:B:326:LYS:HE3	1.93	0.51
1:B:303:HIS:HD2	3:B:544:HOH:O	1.93	0.50

Continued on next page...

Continued from previous page...

Atom-1	Atom-2	Interatomic distance (Å)	Clash overlap (Å)
1:B:419:ASN:HB3	1:D:278:ASP:O	2.11	0.50
1:B:191:LYS:HE3	1:B:199:VAL:CG1	2.42	0.50
2:C:503:STU:H16	2:C:503:STU:H261	1.94	0.49
1:D:405:ASP:O	1:D:407:GLU:N	2.46	0.49
1:C:309:HIS:HE1	1:C:328:SER:O	1.94	0.49
1:D:265:MET:HE2	1:D:326:LYS:CG	2.35	0.49
1:C:411:GLU:HA	1:C:414:ILE:HD12	1.95	0.49
1:D:233:GLU:O	1:D:237:MET:HG2	2.12	0.49
1:B:279:GLY:HA2	1:D:282:PRO:HG2	1.94	0.49
1:C:308:ILE:HG22	1:C:310:ARG:HG2	1.93	0.48
1:D:288:ARG:HB3	1:D:380:ILE:HG23	1.95	0.48
1:B:297:ASN:HD22	1:B:451:GLN:NE2	2.11	0.48
1:B:363:GLU:OE2	1:B:441:LYS:HE2	2.14	0.48
1:B:192:MET:CE	1:B:264:TYR:CE2	2.88	0.48
1:B:279:GLY:HA2	1:D:417:LYS:O	2.13	0.48
1:C:309:HIS:HD2	1:C:311:ASP:N	2.02	0.48
1:C:351:THR:O	1:C:355:MET:HG3	2.14	0.47
1:D:303:HIS:CE1	1:D:369:ASP:OD2	2.61	0.47
1:A:410:ILE:HG21	1:A:430:TYR:CD2	2.49	0.47
1:D:265:MET:CE	1:D:320:ASP:HB3	2.44	0.47
1:B:185:ILE:CD1	1:B:192:MET:HG2	2.45	0.47
1:B:166:HIS:HD2	1:B:168:PHE:CZ	2.33	0.47
1:A:357:PRO:HA	1:A:360:LEU:HD12	1.97	0.47
1:B:367:LYS:NZ	1:B:442:ASN:OD1	2.48	0.47
1:C:405:ASP:C	1:C:407:GLU:H	2.17	0.47
1:A:409:THR:HG22	1:A:412:ASP:OD2	2.15	0.47
1:D:167:SER:HG	1:D:251:PHE:HE1	1.57	0.47
1:A:397:LEU:O	1:A:400:LYS:HB3	2.14	0.46
1:A:228:GLN:HG3	3:A:623:HOH:O	2.15	0.46
1:A:428:ALA:O	1:A:432:VAL:HG23	2.15	0.46
1:C:185:ILE:O	1:C:185:ILE:HG13	2.15	0.46
1:A:410:ILE:HG21	1:A:430:TYR:CG	2.50	0.46
1:C:253:SER:HA	1:C:258:LEU:HD23	1.97	0.46
1:B:300:ASN:HA	1:B:447:ILE:HG21	1.98	0.46
1:C:351:THR:C	1:C:355:MET:HE2	2.35	0.46
1:C:300:ASN:HA	1:C:447:ILE:HG21	1.98	0.46
1:C:164:ARG:HD3	3:C:560:HOH:O	2.15	0.46
1:B:288:ARG:HB3	1:B:380:ILE:HG23	1.99	0.45
1:B:361:ARG:HH11	1:B:361:ARG:HG2	1.81	0.45
1:D:265:MET:HE3	1:D:320:ASP:N	2.32	0.45
1:D:288:ARG:HB3	1:D:380:ILE:CG2	2.47	0.45

Continued on next page...

Continued from previous page...

Atom-1	Atom-2	Interatomic distance (Å)	Clash overlap (Å)
1:B:309:HIS:O	1:B:310:ARG:HB2	2.17	0.44
1:D:265:MET:HE1	1:D:320:ASP:HB3	1.98	0.44
1:B:191:LYS:HE3	1:B:199:VAL:HG13	1.99	0.44
1:D:213:LYS:HE3	1:D:215:LEU:CD2	2.46	0.44
1:C:306:HIS:O	1:C:335:ALA:HA	2.17	0.44
1:B:449:LYS:NZ	3:B:624:HOH:O	2.50	0.44
1:A:406:GLU:C	1:A:408:LYS:H	2.21	0.44
1:A:406:GLU:O	1:A:408:LYS:N	2.50	0.44
1:B:378:LEU:HD22	1:B:437:LEU:HD11	1.99	0.44
1:B:273:ARG:HA	1:B:273:ARG:HD3	1.53	0.44
1:D:300:ASN:HA	1:D:447:ILE:HG21	2.00	0.44
1:B:363:GLU:OE2	1:B:441:LYS:CE	2.65	0.43
1:A:286:HIS:CE1	1:A:290:LYS:HE2	2.53	0.43
1:A:306:HIS:O	1:A:335:ALA:HA	2.18	0.43
1:C:288:ARG:HB3	1:C:380:ILE:CG2	2.48	0.43
1:B:331:GLY:C	1:B:333:ALA:N	2.72	0.43
1:C:411:GLU:H	1:C:411:GLU:HG2	1.67	0.43
1:C:213:LYS:O	1:C:259:CYS:HA	2.19	0.43
1:B:332:LEU:HD23	3:B:574:HOH:O	2.17	0.42
1:C:185:ILE:CG1	1:C:185:ILE:O	2.67	0.42
1:A:320:ASP:C	1:A:320:ASP:OD2	2.57	0.42
1:D:311:ASP:HB2	1:D:332:LEU:HD12	2.00	0.42
1:B:407:GLU:HG3	1:B:408:LYS:HG2	2.01	0.42
1:B:185:ILE:HD11	1:B:192:MET:HG2	2.00	0.42
2:B:502:STU:H261	2:B:502:STU:C16	2.37	0.42
1:A:286:HIS:HE1	3:A:624:HOH:O	2.02	0.42
1:C:183:ARG:HB3	1:C:187:VAL:CG1	2.49	0.42
1:B:309:HIS:CD2	1:B:311:ASP:H	2.22	0.42
1:D:308:ILE:HG22	1:D:310:ARG:HG2	2.01	0.42
1:C:266:PRO:HG2	1:C:321:GLU:CG	2.40	0.42
1:D:330:PHE:HB3	1:D:333:ALA:HB2	2.02	0.42
1:B:405:ASP:C	1:B:407:GLU:H	2.23	0.42
1:A:288:ARG:HB3	1:A:380:ILE:HG23	2.01	0.42
1:C:358:GLU:HG2	1:C:359:ALA:N	2.35	0.41
1:D:202:LYS:HE3	1:D:209:THR:HG21	2.02	0.41
1:A:449:LYS:HA	1:A:449:LYS:HD3	1.90	0.41
1:D:309:HIS:HE1	1:D:328:SER:O	2.04	0.41
1:A:330:PHE:HB2	1:A:331:GLY:H	1.39	0.41
2:A:504:STU:H4	2:A:504:STU:O5	2.20	0.41
1:D:181:ASP:HB3	1:D:190:ASN:HD22	1.85	0.41
1:B:363:GLU:OE2	1:B:441:LYS:NZ	2.51	0.40

Continued on next page...

Continued from previous page...

Atom-1	Atom-2	Interatomic distance (Å)	Clash overlap (Å)
1:A:414:ILE:CD1	1:A:426:VAL:HG11	2.51	0.40
1:A:181:ASP:HB3	1:A:190:ASN:HD22	1.85	0.40
1:D:170:PHE:HB2	1:D:254:ASP:O	2.21	0.40
1:B:182:GLU:OE1	1:B:201:TYR:CE2	2.74	0.40
1:D:251:PHE:CD1	1:D:251:PHE:C	2.94	0.40
1:A:397:LEU:HD23	1:A:397:LEU:HA	1.87	0.40
1:C:281:PRO:HA	1:C:282:PRO:HD3	1.98	0.40

All (7) symmetry-related close contacts are listed below. The label for Atom-2 includes the symmetry operator and encoded unit-cell translations to be applied.

Atom-1	Atom-2	Interatomic distance (Å)	Clash overlap (Å)
3:B:609:HOH:O	3:C:568:HOH:O[2_656]	1.27	0.93
3:A:593:HOH:O	3:A:611:HOH:O[2_757]	1.33	0.87
3:B:607:HOH:O	3:D:567:HOH:O[2_555]	1.42	0.78
3:A:614:HOH:O	3:D:574:HOH:O[2_656]	1.75	0.45
3:A:624:HOH:O	3:B:585:HOH:O[2_656]	1.79	0.41
3:A:618:HOH:O	3:B:633:HOH:O[2_656]	1.82	0.38
3:A:617:HOH:O	3:B:632:HOH:O[2_656]	1.89	0.31

5.3 Torsion angles [i](#)

5.3.1 Protein backbone [i](#)

In the following table, the Percentiles column shows the percent Ramachandran outliers of the chain as a percentile score with respect to all X-ray entries followed by that with respect to entries of similar resolution.

The Analysed column shows the number of residues for which the backbone conformation was analysed, and the total number of residues.

Mol	Chain	Analysed	Favoured	Allowed	Outliers	Percentiles	
1	A	281/307 (92%)	266 (95%)	13 (5%)	2 (1%)	26	18
1	B	280/307 (91%)	266 (95%)	13 (5%)	1 (0%)	39	34
1	C	275/307 (90%)	257 (94%)	13 (5%)	5 (2%)	11	4
1	D	277/307 (90%)	255 (92%)	19 (7%)	3 (1%)	17	10
All	All	1113/1228 (91%)	1044 (94%)	58 (5%)	11 (1%)	19	11

All (11) Ramachandran outliers are listed below:

Mol	Chain	Res	Type
1	A	333	ALA
1	C	254	ASP
1	C	256	ASP
1	C	406	GLU
1	D	206	ASN
1	D	406	GLU
1	B	254	ASP
1	C	207	ASN
1	A	407	GLU
1	C	197	PHE
1	D	333	ALA

5.3.2 Protein sidechains ⓘ

In the following table, the Percentiles column shows the percent sidechain outliers of the chain as a percentile score with respect to all X-ray entries followed by that with respect to entries of similar resolution.

The Analysed column shows the number of residues for which the sidechain conformation was analysed, and the total number of residues.

Mol	Chain	Analysed	Rotameric	Outliers	Percentiles	
1	A	250/267 (94%)	239 (96%)	11 (4%)	35	31
1	B	249/267 (93%)	238 (96%)	11 (4%)	35	31
1	C	246/267 (92%)	240 (98%)	6 (2%)	57	60
1	D	247/267 (92%)	235 (95%)	12 (5%)	31	26
All	All	992/1068 (93%)	952 (96%)	40 (4%)	38	35

All (40) residues with a non-rotameric sidechain are listed below:

Mol	Chain	Res	Type
1	A	186	SER
1	A	194	GLU
1	A	213	LYS
1	A	275	SER
1	A	330	PHE
1	A	332	LEU
1	A	349	VAL
1	A	407	GLU
1	A	411	GLU
1	A	419	ASN
1	A	440	LYS

Continued on next page...

Continued from previous page...

Mol	Chain	Res	Type
1	B	229	GLN
1	B	273	ARG
1	B	303	HIS
1	B	336	SER
1	B	342	THR
1	B	344	MET
1	B	365	THR
1	B	378	LEU
1	B	392	GLU
1	B	409	THR
1	B	419	ASN
1	C	178	ASN
1	C	206	ASN
1	C	254	ASP
1	C	257	ASP
1	C	344	MET
1	C	406	GLU
1	D	199	VAL
1	D	225	GLU
1	D	228	GLN
1	D	243	GLU
1	D	251	PHE
1	D	273	ARG
1	D	321	GLU
1	D	330	PHE
1	D	365	THR
1	D	392	GLU
1	D	397	LEU
1	D	399	ILE

Some sidechains can be flipped to improve hydrogen bonding and reduce clashes. All (38) such sidechains are listed below:

Mol	Chain	Res	Type
1	A	175	ASN
1	A	190	ASN
1	A	206	ASN
1	A	286	HIS
1	A	293	GLN
1	A	303	HIS
1	A	305	ASN
1	A	309	HIS
1	A	394	GLN

Continued on next page...

Continued from previous page...

Mol	Chain	Res	Type
1	A	419	ASN
1	A	438	HIS
1	A	452	GLN
1	B	166	HIS
1	B	178	ASN
1	B	190	ASN
1	B	229	GLN
1	B	232	GLN
1	B	286	HIS
1	B	293	GLN
1	B	297	ASN
1	B	303	HIS
1	B	305	ASN
1	B	309	HIS
1	B	394	GLN
1	C	166	HIS
1	C	175	ASN
1	C	178	ASN
1	C	179	ASN
1	C	190	ASN
1	C	206	ASN
1	C	303	HIS
1	C	309	HIS
1	D	175	ASN
1	D	190	ASN
1	D	303	HIS
1	D	305	ASN
1	D	309	HIS
1	D	438	HIS

5.3.3 RNA ⓘ

There are no RNA molecules in this entry.

5.4 Non-standard residues in protein, DNA, RNA chains ⓘ

4 non-standard protein/DNA/RNA residues are modelled in this entry.

In the following table, the Counts columns list the number of bonds (or angles) for which Mogul statistics could be retrieved, the number of bonds (or angles) that are observed in the model and the number of bonds (or angles) that are defined in the chemical component dictionary. The Link column lists molecule types, if any, to which the group is linked. The Z score for a bond length

(or angle) is the number of standard deviations the observed value is removed from the expected value. A bond length (or angle) with $|Z| > 2$ is considered an outlier worth inspection. RMSZ is the root-mean-square of all Z scores of the bond lengths (or angles).

Mol	Type	Chain	Res	Link	Bond lengths			Bond angles		
					Counts	RMSZ	$\# Z > 2$	Counts	RMSZ	$\# Z > 2$
1	TPO	A	345	1	8,10,11	0.84	0	7,14,16	1.33	1 (14%)
1	TPO	B	345	1	8,10,11	0.72	0	7,14,16	1.42	1 (14%)
1	TPO	C	345	1	8,10,11	0.83	0	7,14,16	1.40	1 (14%)
1	TPO	D	345	1	8,10,11	0.73	0	7,14,16	1.25	0

In the following table, the Chirals column lists the number of chiral outliers, the number of chiral centers analysed, the number of these observed in the model and the number defined in the chemical component dictionary. Similar counts are reported in the Torsion and Rings columns. '-' means no outliers of that kind were identified.

Mol	Type	Chain	Res	Link	Chirals	Torsions	Rings
1	TPO	A	345	1	-	0/8/11/13	0/0/0/0
1	TPO	B	345	1	-	1/8/11/13	0/0/0/0
1	TPO	C	345	1	-	0/8/11/13	0/0/0/0
1	TPO	D	345	1	-	1/8/11/13	0/0/0/0

There are no bond length outliers.

All (3) bond angle outliers are listed below:

Mol	Chain	Res	Type	Atoms	Z	Observed(°)	Ideal(°)
1	A	345	TPO	O-C-CA	-2.03	120.09	125.44
1	B	345	TPO	O3P-P-O2P	2.02	115.09	107.38
1	C	345	TPO	C-CA-N	2.05	114.12	109.83

There are no chirality outliers.

All (2) torsion outliers are listed below:

Mol	Chain	Res	Type	Atoms
1	B	345	TPO	OG1-CB-CA-N
1	D	345	TPO	OG1-CB-CA-N

There are no ring outliers.

No monomer is involved in short contacts.

5.5 Carbohydrates [i](#)

There are no carbohydrates in this entry.

5.6 Ligand geometry [i](#)

4 ligands are modelled in this entry.

In the following table, the Counts columns list the number of bonds (or angles) for which Mogul statistics could be retrieved, the number of bonds (or angles) that are observed in the model and the number of bonds (or angles) that are defined in the chemical component dictionary. The Link column lists molecule types, if any, to which the group is linked. The Z score for a bond length (or angle) is the number of standard deviations the observed value is removed from the expected value. A bond length (or angle) with $|Z| > 2$ is considered an outlier worth inspection. RMSZ is the root-mean-square of all Z scores of the bond lengths (or angles).

Mol	Type	Chain	Res	Link	Bond lengths			Bond angles		
					Counts	RMSZ	# $ Z > 2$	Counts	RMSZ	# $ Z > 2$
2	STU	A	504	-	27,42,42	1.39	3 (11%)	23,68,68	1.37	4 (17%)
2	STU	B	502	-	27,42,42	1.53	4 (14%)	23,68,68	1.68	5 (21%)
2	STU	C	503	-	27,42,42	1.44	4 (14%)	23,68,68	1.68	6 (26%)
2	STU	D	501	-	27,42,42	1.13	3 (11%)	23,68,68	1.06	1 (4%)

In the following table, the Chirals column lists the number of chiral outliers, the number of chiral centers analysed, the number of these observed in the model and the number defined in the chemical component dictionary. Similar counts are reported in the Torsion and Rings columns. '-' means no outliers of that kind were identified.

Mol	Type	Chain	Res	Link	Chirals	Torsions	Rings
2	STU	A	504	-	-	0/4/42/42	0/0/8/8
2	STU	B	502	-	-	0/4/42/42	0/0/8/8
2	STU	C	503	-	-	0/4/42/42	0/0/8/8
2	STU	D	501	-	-	0/4/42/42	0/0/8/8

All (14) bond length outliers are listed below:

Mol	Chain	Res	Type	Atoms	Z	Observed(Å)	Ideal(Å)
2	C	503	STU	C6-C19	-2.80	1.39	1.42
2	D	501	STU	C11-C18	-2.34	1.39	1.42
2	B	502	STU	C3-C4	2.03	1.41	1.36
2	C	503	STU	C26-C21	2.10	1.54	1.51
2	D	501	STU	C26-C21	2.29	1.54	1.51
2	C	503	STU	C24-C25	2.30	1.55	1.51

Continued on next page...

Continued from previous page...

Mol	Chain	Res	Type	Atoms	Z	Observed(Å)	Ideal(Å)
2	D	501	STU	C22-C23	2.45	1.55	1.52
2	A	504	STU	C24-C23	2.61	1.57	1.53
2	B	502	STU	C14-C13	2.83	1.43	1.36
2	A	504	STU	C14-C13	3.13	1.43	1.36
2	A	504	STU	C26-C21	3.40	1.55	1.51
2	B	502	STU	C22-C23	3.48	1.56	1.52
2	C	503	STU	C22-C23	4.11	1.56	1.52
2	B	502	STU	C26-C21	4.89	1.57	1.51

All (16) bond angle outliers are listed below:

Mol	Chain	Res	Type	Atoms	Z	Observed(°)	Ideal(°)
2	B	502	STU	C27-O6-C22	-3.70	107.31	114.39
2	A	504	STU	C3-C4-C5	-3.51	114.74	120.79
2	B	502	STU	O5-C8-C7	-3.51	122.76	128.62
2	B	502	STU	C3-C4-C5	-3.09	115.46	120.79
2	C	503	STU	C3-C4-C5	-3.08	115.49	120.79
2	C	503	STU	C27-O6-C22	-2.84	108.95	114.39
2	A	504	STU	O5-C8-C7	-2.73	124.07	128.62
2	B	502	STU	C6-C19-C18	-2.54	117.92	121.69
2	C	503	STU	C16-C17-C12	-2.39	117.28	120.73
2	A	504	STU	C6-C19-C18	-2.07	118.61	121.69
2	C	503	STU	C6-C19-C18	-2.01	118.70	121.69
2	D	501	STU	C3-C2-C1	2.03	123.40	120.45
2	C	503	STU	C4-C5-C20	2.21	122.19	119.39
2	A	504	STU	C4-C5-C20	2.40	122.43	119.39
2	B	502	STU	C2-C3-C4	2.54	124.15	120.45
2	C	503	STU	C13-C12-C17	2.91	123.07	119.39

There are no chirality outliers.

There are no torsion outliers.

There are no ring outliers.

4 monomers are involved in 6 short contacts:

Mol	Chain	Res	Type	Clashes	Symm-Clashes
2	A	504	STU	2	0
2	B	502	STU	2	0
2	C	503	STU	1	0
2	D	501	STU	1	0

5.7 Other polymers

There are no such residues in this entry.

5.8 Polymer linkage issues

There are no chain breaks in this entry.

6 Fit of model and data ⓘ

6.1 Protein, DNA and RNA chains ⓘ

In the following table, the column labelled ‘#RSRZ> 2’ contains the number (and percentage) of RSRZ outliers, followed by percent RSRZ outliers for the chain as percentile scores relative to all X-ray entries and entries of similar resolution. The OWAB column contains the minimum, median, 95th percentile and maximum values of the occupancy-weighted average B-factor per residue. The column labelled ‘Q< 0.9’ lists the number of (and percentage) of residues with an average occupancy less than 0.9.

Mol	Chain	Analysed	<RSRZ>	#RSRZ>2	OWAB(Å ²)	Q<0.9
1	A	286/307 (93%)	0.33	17 (5%) 26 36	18, 31, 68, 90	0
1	B	286/307 (93%)	0.31	12 (4%) 40 50	15, 32, 68, 93	0
1	C	280/307 (91%)	0.54	21 (7%) 17 23	18, 39, 76, 95	0
1	D	282/307 (91%)	0.68	31 (10%) 7 12	18, 37, 79, 102	0
All	All	1134/1228 (92%)	0.47	81 (7%) 19 26	15, 34, 75, 102	0

All (81) RSRZ outliers are listed below:

Mol	Chain	Res	Type	RSRZ
1	D	187	VAL	8.9
1	C	332	LEU	7.9
1	D	332	LEU	7.5
1	A	336	SER	7.2
1	D	197	PHE	7.2
1	D	331	GLY	7.1
1	B	331	GLY	6.7
1	C	333	ALA	6.3
1	D	188	GLY	6.1
1	C	228	GLN	6.0
1	A	332	LEU	5.8
1	D	333	ALA	5.7
1	C	229	GLN	5.3
1	C	342	THR	5.2
1	A	221	ILE	4.7
1	B	197	PHE	4.7
1	B	335	ALA	4.6
1	D	343	VAL	4.4
1	B	342	THR	4.4
1	B	196	GLY	4.3
1	C	336	SER	4.3

Continued on next page...

Continued from previous page...

Mol	Chain	Res	Type	RSRZ
1	A	343	VAL	4.2
1	A	217	ALA	4.2
1	C	331	GLY	4.1
1	D	336	SER	4.0
1	D	254	ASP	3.9
1	D	231	ASP	3.9
1	D	204	TYR	3.8
1	D	337	GLU	3.8
1	C	207	ASN	3.7
1	D	234	ILE	3.7
1	B	225	GLU	3.5
1	D	256	ASP	3.5
1	A	347	ARG	3.4
1	C	347	ARG	3.4
1	D	251	PHE	3.3
1	C	189	GLY	3.2
1	A	335	ALA	3.2
1	D	205	VAL	3.1
1	D	171	TYR	3.0
1	C	187	VAL	3.0
1	D	228	GLN	3.0
1	D	255	GLY	3.0
1	A	331	GLY	2.9
1	B	217	ALA	2.9
1	B	332	LEU	2.9
1	A	348	ILE	2.8
1	B	226	LEU	2.8
1	D	399	ILE	2.8
1	C	251	PHE	2.7
1	D	258	LEU	2.6
1	A	333	ALA	2.6
1	C	346	SER	2.6
1	A	342	THR	2.6
1	C	197	PHE	2.5
1	A	349	VAL	2.5
1	D	165	PHE	2.5
1	C	343	VAL	2.5
1	A	407	GLU	2.5
1	C	255	GLY	2.4
1	C	407	GLU	2.4
1	A	222	THR	2.4
1	D	170	PHE	2.3

Continued on next page...

Continued from previous page...

Mol	Chain	Res	Type	RSRZ
1	D	185	ILE	2.3
1	B	216	ALA	2.3
1	A	410	ILE	2.3
1	A	223	THR	2.3
1	B	336	SER	2.2
1	D	207	ASN	2.2
1	B	221	ILE	2.2
1	D	215	LEU	2.2
1	D	230	PHE	2.2
1	D	459	ALA	2.2
1	C	344	MET	2.1
1	A	399	ILE	2.1
1	D	226	LEU	2.1
1	D	407	GLU	2.1
1	C	341	GLN	2.1
1	C	258	LEU	2.0
1	C	204	TYR	2.0
1	D	206	ASN	2.0

6.2 Non-standard residues in protein, DNA, RNA chains [i](#)

In the following table, the Atoms column lists the number of modelled atoms in the group and the number defined in the chemical component dictionary. LLDF column lists the quality of electron density of the group with respect to its neighbouring residues in protein, DNA or RNA chains. The B-factors column lists the minimum, median, 95th percentile and maximum values of B factors of atoms in the group. The column labelled 'Q< 0.9' lists the number of atoms with occupancy less than 0.9.

Mol	Type	Chain	Res	Atoms	RSCC	RSR	LLDF	B-factors(Å ²)	Q<0.9
1	TPO	D	345	11/12	0.88	0.14	-	68,69,71,72	0
1	TPO	B	345	11/12	0.89	0.13	-	68,69,75,76	0
1	TPO	C	345	11/12	0.79	0.24	-	84,85,89,90	0
1	TPO	A	345	11/12	0.73	0.31	-	81,83,89,89	0

6.3 Carbohydrates [i](#)

There are no carbohydrates in this entry.

6.4 Ligands [i](#)

In the following table, the Atoms column lists the number of modelled atoms in the group and the number defined in the chemical component dictionary. LLDF column lists the quality of electron density of the group with respect to its neighbouring residues in protein, DNA or RNA chains. The B-factors column lists the minimum, median, 95th percentile and maximum values of B factors of atoms in the group. The column labelled 'Q< 0.9' lists the number of atoms with occupancy less than 0.9.

Mol	Type	Chain	Res	Atoms	RSCC	RSR	LLDF	B-factors(Å ²)	Q<0.9
2	STU	A	504	35/35	0.96	0.13	0.25	13,20,22,25	0
2	STU	D	501	35/35	0.95	0.14	0.04	23,26,30,35	0
2	STU	B	502	35/35	0.96	0.13	-0.08	19,21,27,28	0
2	STU	C	503	35/35	0.96	0.12	-0.32	27,29,31,33	0

6.5 Other polymers [i](#)

There are no such residues in this entry.