



Full wwPDB X-ray Structure Validation Report ⓘ

Feb 1, 2016 – 04:42 AM GMT

PDB ID : 2NW8
Title : Crystal Structure of Tryptophan 2,3-dioxygenase (TDO) from *Xanthomonas campestris* in complex with ferrous heme and tryptophan. Northeast Structural Genomics Target XcR13.
Authors : Forouhar, F.; Anderson, J.L.R.; Mowat, C.G.; Bruckmann, C.; Thackray, S.J.; Seetharaman, J.; Ho, C.K.; Ma, L.C.; Cunningham, K.; Janjua, H.; Zhao, L.; Xiao, R.; Liu, J.; Baran, M.C.; Acton, T.B.; Rost, B.; Montelione, G.T.; Champman, S.K.; Tong, L.; Northeast Structural Genomics Consortium (NESG)
Deposited on : 2006-11-14
Resolution : 1.60 Å(reported)

This is a Full wwPDB X-ray Structure Validation Report for a publicly released PDB entry.
We welcome your comments at validation@mail.wwpdb.org
A user guide is available at
<http://wwpdb.org/validation/2016/XrayValidationReportHelp>
with specific help available everywhere you see the ⓘ symbol.

The following versions of software and data (see [references ⓘ](#)) were used in the production of this report:

MolProbity : 4.02b-467
Mogul : 1.7 (RC4), CSD as536be (2015)
Xtriage (Phenix) : 1.9-1692
EDS : rb-20026688
Percentile statistics : 20151230.v01 (using entries in the PDB archive December 30th 2015)
Refmac : 5.8.0135
CCP4 : 6.5.0
Ideal geometry (proteins) : Engh & Huber (2001)
Ideal geometry (DNA, RNA) : Parkinson et al. (1996)
Validation Pipeline (wwPDB-VP) : trunk26865

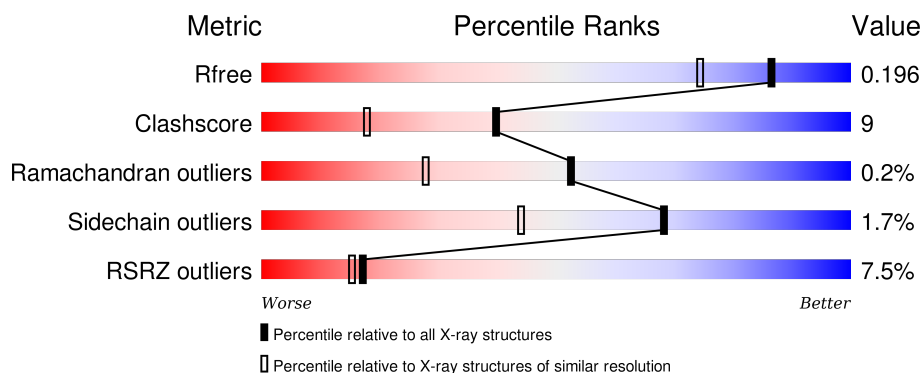
1 Overall quality at a glance

The following experimental techniques were used to determine the structure:

X-RAY DIFFRACTION

The reported resolution of this entry is 1.60 Å.

Percentile scores (ranging between 0-100) for global validation metrics of the entry are shown in the following graphic. The table shows the number of entries on which the scores are based.



Metric	Whole archive (#Entries)	Similar resolution (#Entries, resolution range(Å))
R_{free}	91344	2475 (1.60-1.60)
Clashscore	102246	2732 (1.60-1.60)
Ramachandran outliers	100387	2654 (1.60-1.60)
Sidechain outliers	100360	2653 (1.60-1.60)
RSRZ outliers	91569	2479 (1.60-1.60)

The table below summarises the geometric issues observed across the polymeric chains and their fit to the electron density. The red, orange, yellow and green segments on the lower bar indicate the fraction of residues that contain outliers for ≥ 3 , 2, 1 and 0 types of geometric quality criteria. A grey segment represents the fraction of residues that are not modelled. The numeric value for each fraction is indicated below the corresponding segment, with a dot representing fractions $\leq 5\%$. The upper red bar (where present) indicates the fraction of residues that have poor fit to the electron density. The numeric value is given above the bar.

Mol	Chain	Length	Quality of chain
1	A	306	<div> <div>8%</div> <div>70%</div> <div>17%</div> <div>•</div> <div>13%</div> </div>
1	B	306	<div> <div>5%</div> <div>70%</div> <div>15%</div> <div>•</div> <div>14%</div> </div>

The following table lists non-polymeric compounds, carbohydrate monomers and non-standard residues in protein, DNA, RNA chains that are outliers for geometric or electron-density-fit criteria:

Mol	Type	Chain	Res	Chirality	Geometry	Clashes	Electron density
2	MN	B	307	-	-	-	X
3	TRP	B	309	-	-	-	X

2 Entry composition

There are 5 unique types of molecules in this entry. The entry contains 5256 atoms, of which 0 are hydrogens and 0 are deuteriums.

In the tables below, the ZeroOcc column contains the number of atoms modelled with zero occupancy, the AltConf column contains the number of residues with at least one atom in alternate conformation and the Trace column contains the number of residues modelled with at most 2 atoms.

- Molecule 1 is a protein called Tryptophan 2,3-dioxygenase.

Mol	Chain	Residues	Atoms					ZeroOcc	AltConf	Trace
1	A	266	Total	C	N	O	S	0	0	0
			2201	1410	390	394	7			
1	B	264	Total	C	N	O	S	0	0	0
			2199	1410	389	393	7			

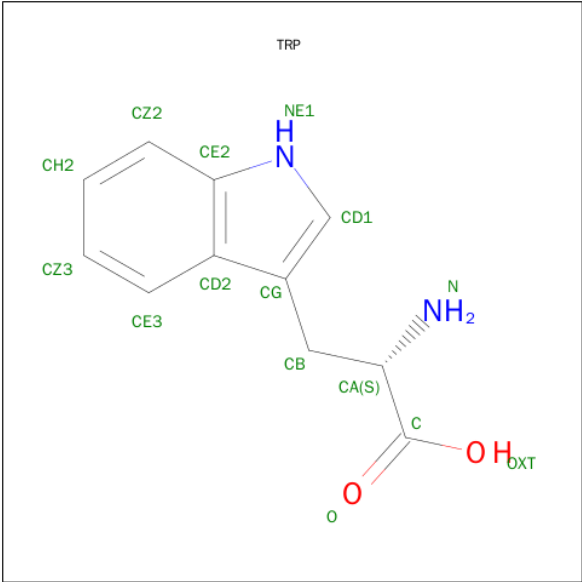
There are 16 discrepancies between the modelled and reference sequences:

Chain	Residue	Modelled	Actual	Comment	Reference
A	299	LEU	-	EXPRESSION TAG	UNP Q8PDA8
A	300	GLU	-	EXPRESSION TAG	UNP Q8PDA8
A	301	HIS	-	EXPRESSION TAG	UNP Q8PDA8
A	302	HIS	-	EXPRESSION TAG	UNP Q8PDA8
A	303	HIS	-	EXPRESSION TAG	UNP Q8PDA8
A	304	HIS	-	EXPRESSION TAG	UNP Q8PDA8
A	305	HIS	-	EXPRESSION TAG	UNP Q8PDA8
A	306	HIS	-	EXPRESSION TAG	UNP Q8PDA8
B	299	LEU	-	EXPRESSION TAG	UNP Q8PDA8
B	300	GLU	-	EXPRESSION TAG	UNP Q8PDA8
B	301	HIS	-	EXPRESSION TAG	UNP Q8PDA8
B	302	HIS	-	EXPRESSION TAG	UNP Q8PDA8
B	303	HIS	-	EXPRESSION TAG	UNP Q8PDA8
B	304	HIS	-	EXPRESSION TAG	UNP Q8PDA8
B	305	HIS	-	EXPRESSION TAG	UNP Q8PDA8
B	306	HIS	-	EXPRESSION TAG	UNP Q8PDA8

- Molecule 2 is MANGANESE (II) ION (three-letter code: MN) (formula: Mn).

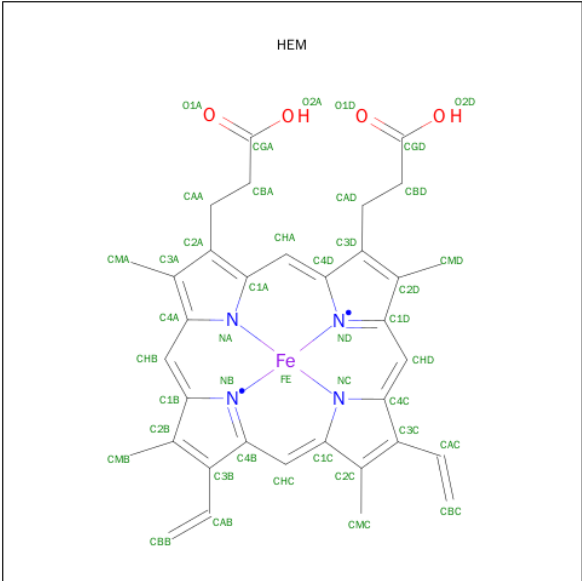
Mol	Chain	Residues	Atoms		ZeroOcc	AltConf
2	B	2	Total	Mn	0	0
			2	2		

- Molecule 3 is TRYPTOPHAN (three-letter code: TRP) (formula: C₁₁H₁₂N₂O₂).



Mol	Chain	Residues	Atoms				ZeroOcc	AltConf
3	A	2	Total	C	N	O	0	0
			30	22	4	4		
3	B	2	Total	C	N	O	0	0
			30	22	4	4		

- Molecule 4 is PROTOPORPHYRIN IX CONTAINING FE (three-letter code: HEM) (formula: C₃₄H₃₂FeN₄O₄).



Continued from previous page...

Mol	Chain	Residues	Atoms					ZeroOcc	AltConf
4	B	1	Total	C	Fe	N	O	0	0
			43	34	1	4	4		

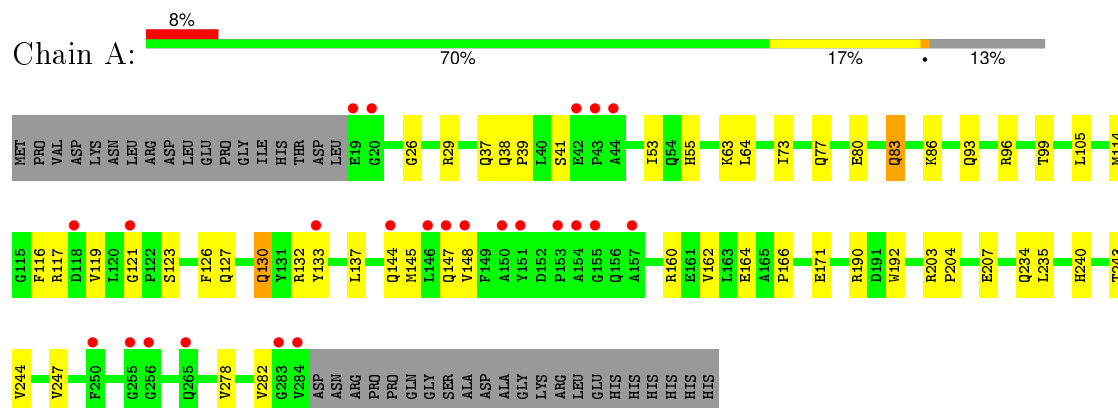
- Molecule 5 is water.

Mol	Chain	Residues	Atoms		ZeroOcc	AltConf
5	A	324	Total	O	0	0
			324	324		
5	B	384	Total	O	0	0
			384	384		

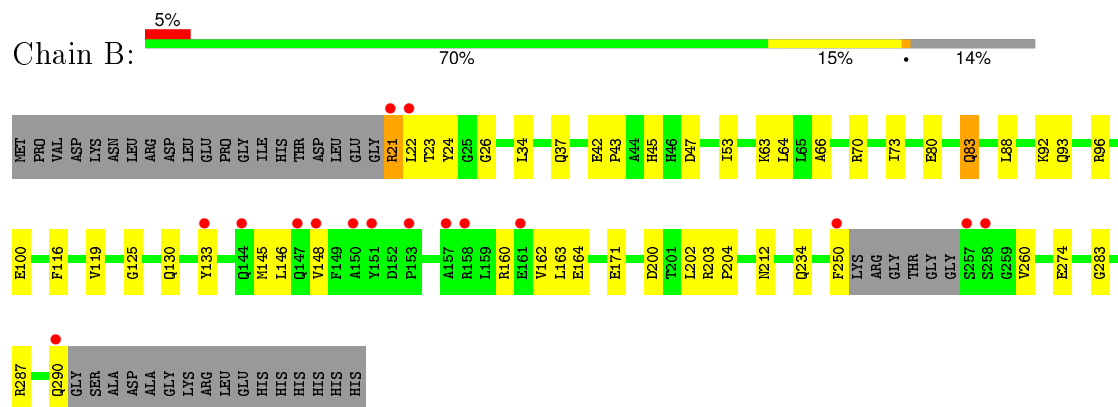
3 Residue-property plots [i](#)

These plots are drawn for all protein, RNA and DNA chains in the entry. The first graphic for a chain summarises the proportions of errors displayed in the second graphic. The second graphic shows the sequence view annotated by issues in geometry and electron density. Residues are color-coded according to the number of geometric quality criteria for which they contain at least one outlier: green = 0, yellow = 1, orange = 2 and red = 3 or more. A red dot above a residue indicates a poor fit to the electron density ($RSRZ > 2$). Stretches of 2 or more consecutive residues without any outlier are shown as a green connector. Residues present in the sample, but not in the model, are shown in grey.

• Molecule 1: Tryptophan 2,3-dioxygenase



• Molecule 1: Tryptophan 2,3-dioxygenase



4 Data and refinement statistics

Property	Value	Source
Space group	P 31 2 1	Depositor
Cell constants a, b, c, α , β , γ	114.09 Å 114.09 Å 96.23 Å 90.00° 90.00° 120.00°	Depositor
Resolution (Å)	19.68 – 1.60 24.54 – 1.60	Depositor EDS
% Data completeness (in resolution range)	86.6 (19.68-1.60) 95.4 (24.54-1.60)	Depositor EDS
R_{merge}	0.07	Depositor
R_{sym}	0.06	Depositor
$\langle I/\sigma(I) \rangle$ ¹	2.76 (at 1.60 Å)	Xtriage
Refinement program	CNS 1.1	Depositor
R, R_{free}	0.171 , 0.189 0.177 , 0.196	Depositor DCC
R_{free} test set	4710 reflections (5.45%)	DCC
Wilson B-factor (Å ²)	15.6	Xtriage
Anisotropy	0.032	Xtriage
Bulk solvent k_{sol} (e/Å ³), B_{sol} (Å ²)	0.36 , 53.1	EDS
Estimated twinning fraction	0.019 for -h,-k,l	Xtriage
L-test for twinning ²	$\langle L \rangle = 0.50$, $\langle L^2 \rangle = 0.33$	Xtriage
Outliers	0 of 94010 reflections	Xtriage
F_o, F_c correlation	0.96	EDS
Total number of atoms	5256	wwPDB-VP
Average B, all atoms (Å ²)	21.0	wwPDB-VP

Xtriage's analysis on translational NCS is as follows: *The largest off-origin peak in the Patterson function is 3.43% of the height of the origin peak. No significant pseudotranslation is detected.*

¹Intensities estimated from amplitudes.

²Theoretical values of $\langle |L| \rangle$, $\langle L^2 \rangle$ for acentric reflections are 0.5, 0.375 respectively for untwinned datasets, and 0.333, 0.2 for perfectly twinned datasets.

5 Model quality

5.1 Standard geometry

Bond lengths and bond angles in the following residue types are not validated in this section: HEM, MN

The Z score for a bond length (or angle) is the number of standard deviations the observed value is removed from the expected value. A bond length (or angle) with $|Z| > 5$ is considered an outlier worth inspection. RMSZ is the root-mean-square of all Z scores of the bond lengths (or angles).

Mol	Chain	Bond lengths		Bond angles	
		RMSZ	# Z >5	RMSZ	# Z >5
1	A	0.30	0/2257	0.48	0/3058
1	B	0.32	0/2256	0.51	0/3060
All	All	0.31	0/4513	0.50	0/6118

There are no bond length outliers.

There are no bond angle outliers.

There are no chirality outliers.

There are no planarity outliers.

5.2 Too-close contacts

In the following table, the Non-H and H(model) columns list the number of non-hydrogen atoms and hydrogen atoms in the chain respectively. The H(added) column lists the number of hydrogen atoms added and optimized by MolProbity. The Clashes column lists the number of clashes within the asymmetric unit, whereas Symm-Clashes lists symmetry related clashes.

Mol	Chain	Non-H	H(model)	H(added)	Clashes	Symm-Clashes
1	A	2201	0	2156	46	0
1	B	2199	0	2149	42	0
2	B	2	0	0	0	0
3	A	30	0	18	1	0
3	B	30	0	18	0	0
4	A	43	0	30	1	0
4	B	43	0	30	1	0
5	A	324	0	0	5	0
5	B	384	0	0	5	1
All	All	5256	0	4401	79	1

The all-atom clashscore is defined as the number of clashes found per 1000 atoms (including

hydrogen atoms). The all-atom clashscore for this structure is 9.

All (79) close contacts within the same asymmetric unit are listed below, sorted by their clash magnitude.

Atom-1	Atom-2	Interatomic distance (Å)	Clash overlap (Å)
1:B:130:GLN:HG3	5:B:776:HOH:O	1.67	0.92
1:A:83:GLN:HE21	1:A:83:GLN:H	1.22	0.88
1:B:83:GLN:H	1:B:83:GLN:HE21	1.22	0.88
1:B:23:THR:HG23	1:B:26:GLY:H	1.41	0.86
1:A:93:GLN:HE22	1:A:96:ARG:HH21	1.25	0.83
1:A:130:GLN:HG3	5:A:712:HOH:O	1.80	0.79
1:B:93:GLN:HE22	1:B:96:ARG:HH21	1.28	0.77
1:A:105:LEU:HD21	4:A:401:HEM:HAB	1.69	0.75
1:B:45:HIS:HD2	1:B:47:ASP:H	1.35	0.74
5:A:631:HOH:O	1:B:100:GLU:HG3	1.88	0.73
1:B:23:THR:HG22	5:B:553:HOH:O	1.96	0.66
1:B:93:GLN:HE22	1:B:96:ARG:NH2	1.93	0.65
1:B:22:LEU:HD23	1:B:22:LEU:H	1.61	0.64
1:A:93:GLN:HE22	1:A:96:ARG:NH2	1.94	0.64
1:A:29:ARG:HG3	1:A:29:ARG:HH11	1.62	0.64
1:A:278:VAL:O	1:A:282:VAL:HG23	1.99	0.62
1:A:203:ARG:O	1:A:207:GLU:HG3	2.01	0.61
1:A:132:ARG:HD2	1:A:145:MET:HG2	1.83	0.61
1:A:116:PHE:O	1:A:119:VAL:HG22	2.01	0.60
1:A:63:LYS:NZ	1:B:37:GLN:HE21	2.00	0.60
1:A:26:GLY:O	1:A:29:ARG:HD2	2.03	0.58
1:B:145:MET:O	1:B:148:VAL:HG22	2.02	0.58
1:B:45:HIS:CD2	1:B:47:ASP:H	2.21	0.56
1:A:145:MET:O	1:A:148:VAL:HG12	2.07	0.55
1:B:116:PHE:O	1:B:119:VAL:HG22	2.06	0.55
1:B:250:PHE:HD2	1:B:260:VAL:HG23	1.71	0.55
1:B:250:PHE:HB2	1:B:260:VAL:HG21	1.90	0.54
1:A:234:GLN:HA	1:A:234:GLN:HE21	1.72	0.53
1:A:147:GLN:HG3	5:A:713:HOH:O	2.08	0.52
1:A:127:GLN:NE2	1:B:24:TYR:H	2.07	0.51
1:A:37:GLN:HE21	1:B:63:LYS:NZ	2.08	0.51
1:A:114:MET:HE1	1:A:117:ARG:HD2	1.93	0.51
1:A:203:ARG:N	1:A:204:PRO:HD2	2.26	0.51
1:A:39:PRO:HB2	5:A:556:HOH:O	2.11	0.50
1:B:287:ARG:HB3	1:B:290:GLN:NE2	2.27	0.50
1:B:133:TYR:CZ	1:B:162:VAL:HG21	2.47	0.50
1:B:234:GLN:HA	1:B:234:GLN:HE21	1.77	0.49
1:B:287:ARG:HB3	1:B:290:GLN:HE22	1.77	0.49

Continued on next page...

Continued from previous page...

Atom-1	Atom-2	Interatomic distance (Å)	Clash overlap (Å)
1:B:42:GLU:HA	1:B:43:PRO:C	2.34	0.48
1:A:83:GLN:NE2	1:A:83:GLN:H	2.02	0.48
1:B:160:ARG:O	1:B:164:GLU:HG3	2.13	0.48
1:A:64:LEU:HB2	1:B:53:ILE:HD13	1.97	0.47
1:A:63:LYS:HZ3	1:B:37:GLN:HE21	1.62	0.47
1:A:86:LYS:HE2	5:B:485:HOH:O	2.15	0.47
1:A:160:ARG:O	1:A:164:GLU:HG3	2.14	0.47
1:B:21:ARG:HE	1:B:21:ARG:HA	1.80	0.47
1:A:99:THR:HG21	1:A:235:LEU:HG	1.96	0.46
1:B:125:GLY:HA3	4:B:401:HEM:C1D	2.50	0.46
1:B:83:GLN:N	1:B:83:GLN:HE21	2.03	0.45
1:A:73:ILE:O	1:A:77:GLN:HG3	2.17	0.45
1:A:133:TYR:CZ	1:A:162:VAL:HG21	2.52	0.44
1:B:80:GLU:HB3	1:B:83:GLN:NE2	2.33	0.44
1:A:55:HIS:NE2	3:A:307:TRP:NE1	2.63	0.44
1:A:73:ILE:HG23	1:A:171:GLU:HG3	2.00	0.44
1:A:53:ILE:CD1	1:B:64:LEU:HB2	2.48	0.43
1:B:34:LEU:HA	1:B:37:GLN:HE22	1.83	0.43
1:B:202:LEU:HB2	1:B:274:GLU:HG2	2.01	0.43
1:A:166:PRO:HG3	1:A:192:TRP:CE2	2.53	0.43
1:B:45:HIS:HE1	5:B:480:HOH:O	2.01	0.43
1:B:66:ALA:HB1	1:B:70:ARG:HH12	1.84	0.42
1:A:29:ARG:CG	1:A:29:ARG:HH11	2.29	0.42
1:A:29:ARG:NH1	5:A:594:HOH:O	2.44	0.42
1:A:53:ILE:HD13	1:B:64:LEU:HB2	2.00	0.42
1:B:21:ARG:HG2	5:B:765:HOH:O	2.18	0.42
1:A:38:GLN:HE21	1:B:21:ARG:NH2	2.17	0.42
1:B:203:ARG:N	1:B:204:PRO:HD2	2.35	0.42
1:A:144:GLN:HG3	1:A:147:GLN:NE2	2.34	0.41
1:A:114:MET:CE	1:A:117:ARG:HD2	2.49	0.41
1:A:121:GLY:C	1:A:123:SER:H	2.22	0.41
1:A:64:LEU:HB2	1:B:53:ILE:CD1	2.50	0.41
1:B:88:LEU:O	1:B:92:LYS:HG3	2.21	0.41
1:A:243:THR:O	1:A:247:VAL:HG23	2.21	0.41
1:B:146:LEU:HD11	1:B:163:LEU:HD22	2.03	0.41
1:A:41:SER:HA	1:A:119:VAL:HG11	2.03	0.41
1:A:240:HIS:O	1:A:244:VAL:HG23	2.21	0.40
1:A:80:GLU:HB3	1:A:83:GLN:NE2	2.36	0.40
1:A:83:GLN:N	1:A:83:GLN:HE21	2.02	0.40
1:A:133:TYR:CE2	1:A:137:LEU:HD11	2.56	0.40
1:B:73:ILE:HG23	1:B:171:GLU:HG3	2.02	0.40

All (1) symmetry-related close contacts are listed below. The label for Atom-2 includes the symmetry operator and encoded unit-cell translations to be applied.

Atom-1	Atom-2	Interatomic distance (Å)	Clash overlap (Å)
5:B:575:HOH:O	5:B:575:HOH:O[6_555]	1.80	0.40

5.3 Torsion angles [i](#)

5.3.1 Protein backbone [i](#)

In the following table, the Percentiles column shows the percent Ramachandran outliers of the chain as a percentile score with respect to all X-ray entries followed by that with respect to entries of similar resolution.

The Analysed column shows the number of residues for which the backbone conformation was analysed, and the total number of residues.

Mol	Chain	Analysed	Favoured	Allowed	Outliers	Percentiles	
1	A	264/306 (86%)	258 (98%)	6 (2%)	0	100	100
1	B	260/306 (85%)	254 (98%)	5 (2%)	1 (0%)	39	17
All	All	524/612 (86%)	512 (98%)	11 (2%)	1 (0%)	52	28

All (1) Ramachandran outliers are listed below:

Mol	Chain	Res	Type
1	B	283	GLY

5.3.2 Protein sidechains [i](#)

In the following table, the Percentiles column shows the percent sidechain outliers of the chain as a percentile score with respect to all X-ray entries followed by that with respect to entries of similar resolution.

The Analysed column shows the number of residues for which the sidechain conformation was analysed, and the total number of residues.

Mol	Chain	Analysed	Rotameric	Outliers	Percentiles	
1	A	232/267 (87%)	228 (98%)	4 (2%)	68	44
1	B	234/267 (88%)	230 (98%)	4 (2%)	68	44
All	All	466/534 (87%)	458 (98%)	8 (2%)	68	44

All (8) residues with a non-rotameric sidechain are listed below:

Mol	Chain	Res	Type
1	A	83	GLN
1	A	126	PHE
1	A	130	GLN
1	A	190	ARG
1	B	21	ARG
1	B	83	GLN
1	B	200	ASP
1	B	212	ASN

Some sidechains can be flipped to improve hydrogen bonding and reduce clashes. All (17) such sidechains are listed below:

Mol	Chain	Res	Type
1	A	37	GLN
1	A	38	GLN
1	A	83	GLN
1	A	93	GLN
1	A	127	GLN
1	A	130	GLN
1	A	147	GLN
1	A	234	GLN
1	B	37	GLN
1	B	45	HIS
1	B	83	GLN
1	B	93	GLN
1	B	147	GLN
1	B	212	ASN
1	B	234	GLN
1	B	265	GLN
1	B	290	GLN

5.3.3 RNA ⓘ

There are no RNA molecules in this entry.

5.4 Non-standard residues in protein, DNA, RNA chains ⓘ

There are no non-standard protein/DNA/RNA residues in this entry.

5.5 Carbohydrates [i](#)

There are no carbohydrates in this entry.

5.6 Ligand geometry [i](#)

Of 8 ligands modelled in this entry, 2 are monoatomic - leaving 6 for Mogul analysis.

In the following table, the Counts columns list the number of bonds (or angles) for which Mogul statistics could be retrieved, the number of bonds (or angles) that are observed in the model and the number of bonds (or angles) that are defined in the chemical component dictionary. The Link column lists molecule types, if any, to which the group is linked. The Z score for a bond length (or angle) is the number of standard deviations the observed value is removed from the expected value. A bond length (or angle) with $|Z| > 2$ is considered an outlier worth inspection. RMSZ is the root-mean-square of all Z scores of the bond lengths (or angles).

Mol	Type	Chain	Res	Link	Bond lengths			Bond angles		
					Counts	RMSZ	$\# Z > 2$	Counts	RMSZ	$\# Z > 2$
3	TRP	A	307	-	12,16,16	0.75	0	7,22,22	1.03	0
3	TRP	A	308	-	12,16,16	0.73	0	7,22,22	0.98	0
4	HEM	A	401	1	30,50,50	2.38	12 (40%)	24,82,82	3.01	12 (50%)
3	TRP	B	309	-	12,16,16	0.74	0	7,22,22	1.01	0
3	TRP	B	310	-	12,16,16	0.73	0	7,22,22	1.01	0
4	HEM	B	401	1	30,50,50	2.46	14 (46%)	24,82,82	3.00	13 (54%)

In the following table, the Chirals column lists the number of chiral outliers, the number of chiral centers analysed, the number of these observed in the model and the number defined in the chemical component dictionary. Similar counts are reported in the Torsion and Rings columns. '-' means no outliers of that kind were identified.

Mol	Type	Chain	Res	Link	Chirals	Torsions	Rings
3	TRP	A	307	-	-	0/3/8/8	0/2/2/2
3	TRP	A	308	-	-	0/3/8/8	0/2/2/2
4	HEM	A	401	1	-	0/10/54/54	0/0/8/8
3	TRP	B	309	-	-	0/3/8/8	0/2/2/2
3	TRP	B	310	-	-	0/3/8/8	0/2/2/2
4	HEM	B	401	1	-	0/10/54/54	0/0/8/8

All (26) bond length outliers are listed below:

Mol	Chain	Res	Type	Atoms	Z	Observed(Å)	Ideal(Å)
4	A	401	HEM	C2C-C1C	-3.52	1.45	1.52
4	B	401	HEM	C2C-C1C	-3.49	1.46	1.52
4	B	401	HEM	C3B-C4B	-2.86	1.49	1.51

Continued on next page...

Continued from previous page...

Mol	Chain	Res	Type	Atoms	Z	Observed(Å)	Ideal(Å)
4	B	401	HEM	C3D-C4D	-2.80	1.48	1.51
4	B	401	HEM	CAD-C3D	-2.21	1.49	1.54
4	A	401	HEM	CMB-C2B	2.01	1.57	1.53
4	B	401	HEM	CBC-CAC	2.04	1.41	1.29
4	B	401	HEM	CHC-C1C	2.05	1.41	1.36
4	B	401	HEM	CMA-C3A	2.33	1.56	1.51
4	A	401	HEM	CHD-C4C	2.34	1.41	1.36
4	A	401	HEM	CHC-C1C	2.35	1.41	1.36
4	A	401	HEM	CMA-C3A	2.44	1.56	1.51
4	A	401	HEM	FE-ND	3.21	2.14	1.97
4	B	401	HEM	FE-ND	3.27	2.14	1.97
4	B	401	HEM	C3C-CAC	3.35	1.57	1.51
4	A	401	HEM	CAA-C2A	3.51	1.58	1.52
4	B	401	HEM	C4C-NC	3.70	1.40	1.36
4	A	401	HEM	C3B-CAB	3.75	1.58	1.51
4	A	401	HEM	C3C-CAC	3.75	1.58	1.51
4	A	401	HEM	C4C-NC	3.78	1.40	1.36
4	B	401	HEM	CAA-C2A	3.79	1.58	1.52
4	B	401	HEM	C3B-CAB	3.84	1.58	1.51
4	B	401	HEM	FE-NB	4.25	2.20	1.97
4	A	401	HEM	FE-NC	4.63	2.14	1.95
4	A	401	HEM	FE-NB	5.02	2.24	1.97
4	B	401	HEM	FE-NC	5.67	2.18	1.95

All (25) bond angle outliers are listed below:

Mol	Chain	Res	Type	Atoms	Z	Observed(°)	Ideal(°)
4	B	401	HEM	C3C-CAC-CBC	-5.74	115.65	124.46
4	A	401	HEM	C3C-CAC-CBC	-5.43	116.12	124.46
4	B	401	HEM	CAA-CBA-CGA	-2.79	107.64	112.75
4	A	401	HEM	C2D-C3D-C4D	-2.17	97.81	101.50
4	B	401	HEM	C2D-C3D-C4D	-2.15	97.85	101.50
4	A	401	HEM	CAA-CBA-CGA	-2.11	108.87	112.75
4	B	401	HEM	CAA-C2A-C1A	-2.08	124.75	127.01
4	A	401	HEM	CMD-C2D-C3D	2.28	124.41	114.35
4	B	401	HEM	C3B-C4B-CHC	2.31	126.41	123.16
4	B	401	HEM	CMD-C2D-C3D	2.34	124.69	114.35
4	A	401	HEM	C2C-C1C-CHC	2.35	127.25	123.68
4	B	401	HEM	C2C-C1C-CHC	2.51	127.50	123.68
4	A	401	HEM	CBA-CAA-C2A	2.70	117.36	112.53
4	A	401	HEM	C3B-C4B-CHC	2.87	127.20	123.16
4	B	401	HEM	CBA-CAA-C2A	3.40	118.62	112.53

Continued on next page...

Continued from previous page...

Mol	Chain	Res	Type	Atoms	Z	Observed(°)	Ideal(°)
4	B	401	HEM	C1D-CHD-C4C	3.58	131.81	125.82
4	A	401	HEM	CAD-C3D-C2D	3.83	124.24	113.22
4	A	401	HEM	C1D-CHD-C4C	4.05	132.60	125.82
4	B	401	HEM	CAD-C3D-C2D	4.09	124.97	113.22
4	A	401	HEM	CMC-C2C-C3C	4.20	127.01	116.53
4	B	401	HEM	CMC-C2C-C3C	4.25	127.15	116.53
4	B	401	HEM	CMB-C2B-C3B	5.21	129.54	116.53
4	A	401	HEM	CMB-C2B-C3B	5.38	129.96	116.53
4	B	401	HEM	CAD-C3D-C4D	7.00	137.17	112.47
4	A	401	HEM	CAD-C3D-C4D	7.22	137.94	112.47

There are no chirality outliers.

There are no torsion outliers.

There are no ring outliers.

3 monomers are involved in 3 short contacts:

Mol	Chain	Res	Type	Clashes	Symm-Clashes
3	A	307	TRP	1	0
4	A	401	HEM	1	0
4	B	401	HEM	1	0

5.7 Other polymers [i](#)

There are no such residues in this entry.

5.8 Polymer linkage issues [i](#)

There are no chain breaks in this entry.

6 Fit of model and data ⓘ

6.1 Protein, DNA and RNA chains ⓘ

In the following table, the column labelled ‘#RSRZ> 2’ contains the number (and percentage) of RSRZ outliers, followed by percent RSRZ outliers for the chain as percentile scores relative to all X-ray entries and entries of similar resolution. The OWAB column contains the minimum, median, 95th percentile and maximum values of the occupancy-weighted average B-factor per residue. The column labelled ‘Q< 0.9’ lists the number of (and percentage) of residues with an average occupancy less than 0.9.

Mol	Chain	Analysed	<RSRZ>	#RSRZ>2	OWAB(Å ²)	Q<0.9
1	A	266/306 (86%)	0.14	24 (9%) 12 10	10, 19, 42, 50	0
1	B	264/306 (86%)	-0.11	16 (6%) 25 22	9, 15, 41, 49	0
All	All	530/612 (86%)	0.02	40 (7%) 17 15	9, 17, 42, 50	0

All (40) RSRZ outliers are listed below:

Mol	Chain	Res	Type	RSRZ
1	B	250	PHE	7.9
1	A	150	ALA	7.8
1	A	284	VAL	6.5
1	B	257	SER	6.5
1	A	151	TYR	6.5
1	B	151	TYR	6.2
1	B	21	ARG	6.1
1	B	22	LEU	6.0
1	A	153	PRO	5.7
1	A	144	GLN	5.6
1	A	147	GLN	5.3
1	B	258	SER	4.7
1	B	153	PRO	4.2
1	B	150	ALA	4.1
1	A	148	VAL	3.8
1	A	283	GLY	3.8
1	B	133	TYR	3.4
1	B	290	GLN	3.4
1	A	20	GLY	3.3
1	B	158	ARG	3.0
1	A	255	GLY	3.0
1	A	42	GLU	2.9
1	B	157	ALA	2.8
1	A	19	GLU	2.8

Continued on next page...

Continued from previous page...

Mol	Chain	Res	Type	RSRZ
1	A	43	PRO	2.7
1	A	154	ALA	2.7
1	A	250	PHE	2.7
1	A	256	GLY	2.6
1	B	148	VAL	2.6
1	A	157	ALA	2.5
1	A	118	ASP	2.5
1	A	155	GLY	2.5
1	A	133	TYR	2.4
1	A	146	LEU	2.4
1	A	265	GLN	2.3
1	A	44	ALA	2.2
1	A	121	GLY	2.1
1	B	147	GLN	2.1
1	B	161	GLU	2.1
1	B	144	GLN	2.0

6.2 Non-standard residues in protein, DNA, RNA chains [i](#)

There are no non-standard protein/DNA/RNA residues in this entry.

6.3 Carbohydrates [i](#)

There are no carbohydrates in this entry.

6.4 Ligands [i](#)

In the following table, the Atoms column lists the number of modelled atoms in the group and the number defined in the chemical component dictionary. LLDF column lists the quality of electron density of the group with respect to its neighbouring residues in protein, DNA or RNA chains. The B-factors column lists the minimum, median, 95th percentile and maximum values of B factors of atoms in the group. The column labelled 'Q< 0.9' lists the number of atoms with occupancy less than 0.9.

Mol	Type	Chain	Res	Atoms	RSCC	RSR	LLDF	B-factors(Å ²)	Q<0.9
3	TRP	B	309	15/15	0.56	0.21	9.31	31,33,45,45	0
2	MN	B	307	1/1	0.99	0.11	2.05	27,27,27,27	0
4	HEM	B	401	43/43	0.97	0.09	0.10	10,13,16,21	0
3	TRP	A	307	15/15	0.87	0.11	0.08	22,25,28,28	0
4	HEM	A	401	43/43	0.97	0.10	-0.05	16,20,27,29	0

Continued on next page...

Continued from previous page...

Mol	Type	Chain	Res	Atoms	RSCC	RSR	LLDF	B-factors(\AA^2)	Q<0.9
3	TRP	B	310	15/15	0.96	0.06	-0.14	12,13,15,18	0
3	TRP	A	308	15/15	0.97	0.05	-1.32	12,13,16,17	0
2	MN	B	308	1/1	0.99	0.17	-	33,33,33,33	0

6.5 Other polymers [i](#)

There are no such residues in this entry.