



Full wwPDB X-ray Structure Validation Report ⓘ

Feb 1, 2016 – 04:43 AM GMT

PDB ID : 2NZ5
Title : Structure and Function Studies of Cytochrome P450 158A1 from *Streptomyces coelicolor* A3(2)
Authors : Zhao, B.; Lamb, D.C.; Kelly, S.L.; Waterman, M.R.
Deposited on : 2006-11-22
Resolution : 2.35 Å(reported)

This is a Full wwPDB X-ray Structure Validation Report for a publicly released PDB entry.
We welcome your comments at validation@mail.wwpdb.org
A user guide is available at
<http://wwpdb.org/validation/2016/XrayValidationReportHelp>
with specific help available everywhere you see the ⓘ symbol.

The following versions of software and data (see [references ⓘ](#)) were used in the production of this report:

MolProbity : 4.02b-467
Mogul : 1.7 (RC4), CSD as536be (2015)
Xtriage (Phenix) : 1.9-1692
EDS : rb-20026688
Percentile statistics : 20151230.v01 (using entries in the PDB archive December 30th 2015)
Refmac : 5.8.0135
CCP4 : 6.5.0
Ideal geometry (proteins) : Engh & Huber (2001)
Ideal geometry (DNA, RNA) : Parkinson et al. (1996)
Validation Pipeline (wwPDB-VP) : trunk26865

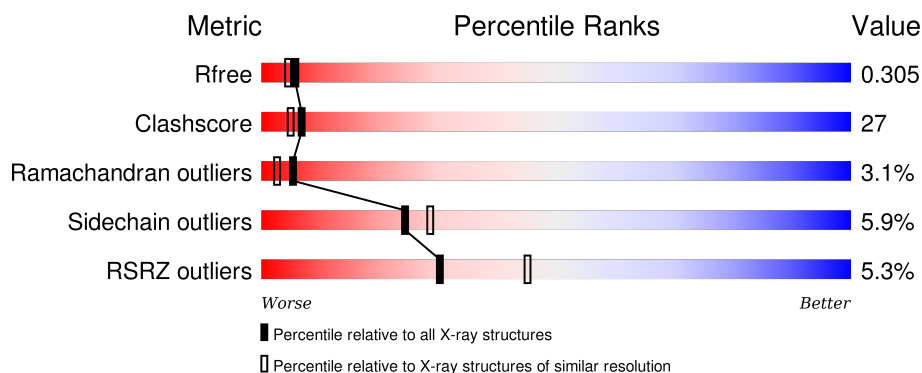
1 Overall quality at a glance

The following experimental techniques were used to determine the structure:

X-RAY DIFFRACTION

The reported resolution of this entry is 2.35 Å.

Percentile scores (ranging between 0-100) for global validation metrics of the entry are shown in the following graphic. The table shows the number of entries on which the scores are based.



Metric	Whole archive (#Entries)	Similar resolution (#Entries, resolution range(Å))
R_{free}	91344	1352 (2.38-2.34)
Clashscore	102246	1456 (2.38-2.34)
Ramachandran outliers	100387	1435 (2.38-2.34)
Sidechain outliers	100360	1436 (2.38-2.34)
RSRZ outliers	91569	1358 (2.38-2.34)

The table below summarises the geometric issues observed across the polymeric chains and their fit to the electron density. The red, orange, yellow and green segments on the lower bar indicate the fraction of residues that contain outliers for ≥ 3 , 2, 1 and 0 types of geometric quality criteria. A grey segment represents the fraction of residues that are not modelled. The numeric value for each fraction is indicated below the corresponding segment, with a dot representing fractions $\leq 5\%$. The upper red bar (where present) indicates the fraction of residues that have poor fit to the electron density. The numeric value is given above the bar.

Mol	Chain	Length	Quality of chain
1	A	413	<div> <div>4%</div> <div>57%</div> <div>34%</div> <div>...</div> </div>
1	B	413	<div> <div>7%</div> <div>59%</div> <div>34%</div> <div>..</div> </div>

The following table lists non-polymeric compounds, carbohydrate monomers and non-standard residues in protein, DNA, RNA chains that are outliers for geometric or electron-density-fit criteria:

Mol	Type	Chain	Res	Chirality	Geometry	Clashes	Electron density
3	226	A	431	-	-	-	X
3	226	B	431	-	-	-	X
3	226	B	432	-	-	-	X

2 Entry composition

There are 4 unique types of molecules in this entry. The entry contains 6593 atoms, of which 0 are hydrogens and 0 are deuteriums.

In the tables below, the ZeroOcc column contains the number of atoms modelled with zero occupancy, the AltConf column contains the number of residues with at least one atom in alternate conformation and the Trace column contains the number of residues modelled with at most 2 atoms.

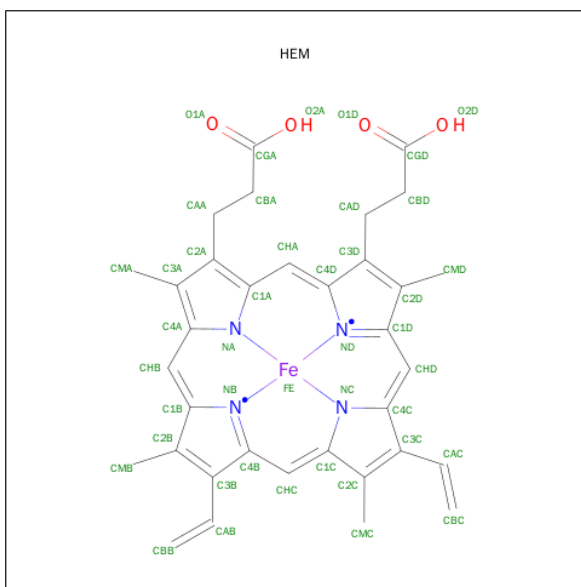
- Molecule 1 is a protein called Cytochrome P450 CYP158A1.

Mol	Chain	Residues	Atoms					ZeroOcc	AltConf	Trace
1	A	399	Total	C	N	O	S	0	0	0
			3094	1938	590	556	10			
1	B	399	Total	C	N	O	S	0	0	0
			3094	1938	590	556	10			

There are 12 discrepancies between the modelled and reference sequences:

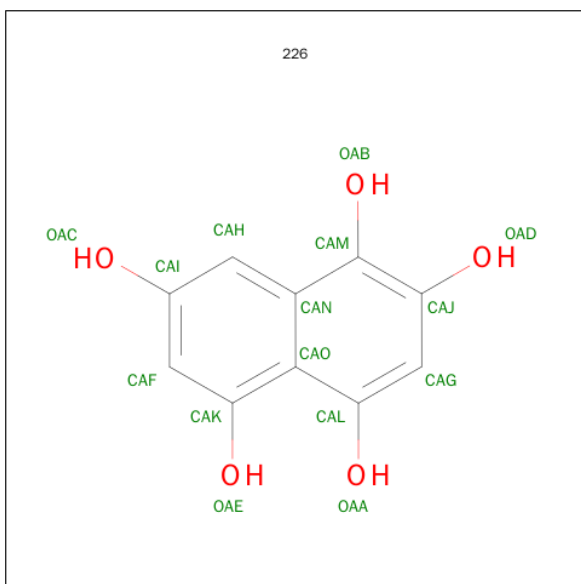
Chain	Residue	Modelled	Actual	Comment	Reference
A	408	HIS	-	EXPRESSION TAG	UNP Q9KZF5
A	409	HIS	-	EXPRESSION TAG	UNP Q9KZF5
A	410	HIS	-	EXPRESSION TAG	UNP Q9KZF5
A	411	HIS	-	EXPRESSION TAG	UNP Q9KZF5
A	412	HIS	-	EXPRESSION TAG	UNP Q9KZF5
A	413	HIS	-	EXPRESSION TAG	UNP Q9KZF5
B	408	HIS	-	EXPRESSION TAG	UNP Q9KZF5
B	409	HIS	-	EXPRESSION TAG	UNP Q9KZF5
B	410	HIS	-	EXPRESSION TAG	UNP Q9KZF5
B	411	HIS	-	EXPRESSION TAG	UNP Q9KZF5
B	412	HIS	-	EXPRESSION TAG	UNP Q9KZF5
B	413	HIS	-	EXPRESSION TAG	UNP Q9KZF5

- Molecule 2 is PROTOPORPHYRIN IX CONTAINING FE (three-letter code: HEM) (formula: $C_{34}H_{32}FeN_4O_4$).



Mol	Chain	Residues	Atoms					ZeroOcc	AltConf
2	A	1	Total 43	C 34	Fe 1	N 4	O 4	0	0
2	B	1	Total 43	C 34	Fe 1	N 4	O 4	0	0

- Molecule 3 is NAPHTHALENE-1,2,4,5,7-PENTOL (three-letter code: 226) (formula: $\text{C}_{10}\text{H}_8\text{O}_5$).



Mol	Chain	Residues	Atoms			ZeroOcc	AltConf
3	A	1	Total	C	O	0	0
			15	10	5		

Continued on next page...

Continued from previous page...

Mol	Chain	Residues	Atoms			ZeroOcc	AltConf
3	A	1	Total	C	O	0	0
			15	10	5		
3	B	1	Total	C	O	0	0
			15	10	5		
3	B	1	Total	C	O	0	0
			15	10	5		

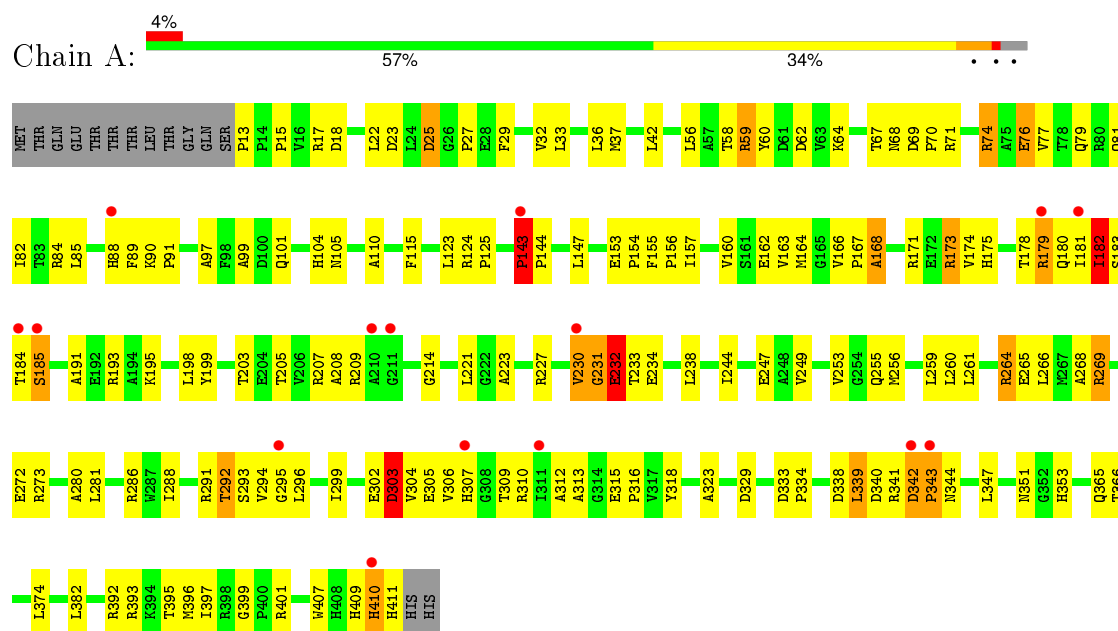
- Molecule 4 is water.

Mol	Chain	Residues	Atoms		ZeroOcc	AltConf
4	A	147	Total	O	0	0
			147	147		
4	B	112	Total	O	0	0
			112	112		

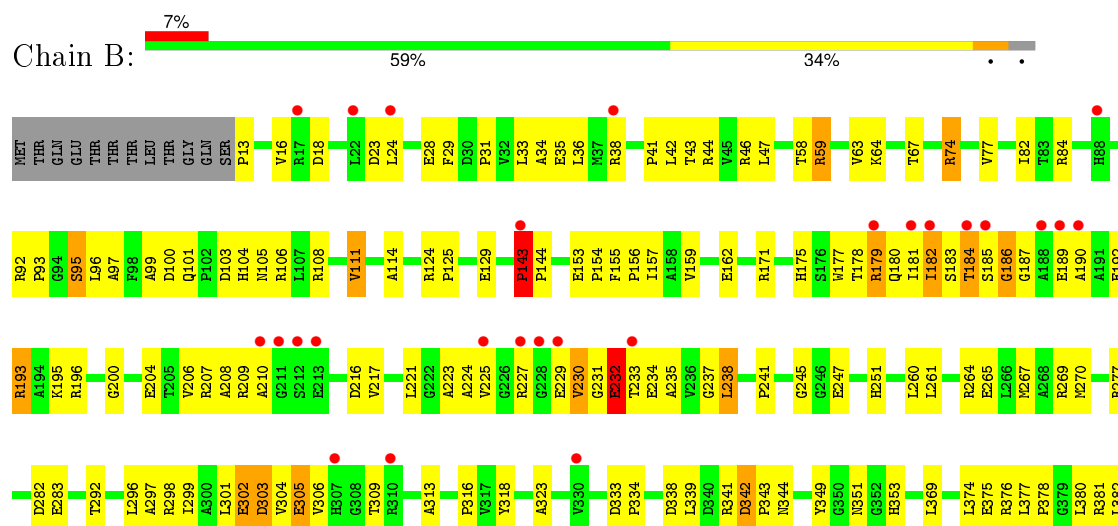
3 Residue-property plots

These plots are drawn for all protein, RNA and DNA chains in the entry. The first graphic for a chain summarises the proportions of errors displayed in the second graphic. The second graphic shows the sequence view annotated by issues in geometry and electron density. Residues are color-coded according to the number of geometric quality criteria for which they contain at least one outlier: green = 0, yellow = 1, orange = 2 and red = 3 or more. A red dot above a residue indicates a poor fit to the electron density ($\text{RSRZ} > 2$). Stretches of 2 or more consecutive residues without any outlier are shown as a green connector. Residues present in the sample, but not in the model, are shown in grey.

• Molecule 1: Cytochrome P450 CYP158A1



• Molecule 1: Cytochrome P450 CYP158A1





4 Data and refinement statistics

Property	Value	Source
Space group	C 1 2 1	Depositor
Cell constants a, b, c, α , β , γ	192.27Å 44.86Å 105.05Å 90.00° 97.76° 90.00°	Depositor
Resolution (Å)	10.00 – 2.35 47.63 – 2.10	Depositor EDS
% Data completeness (in resolution range)	84.3 (10.00-2.35) 89.7 (47.63-2.10)	Depositor EDS
R_{merge}	0.09	Depositor
R_{sym}	0.07	Depositor
$\langle I/\sigma(I) \rangle$ ¹	2.25 (at 2.10Å)	Xtriage
Refinement program	CNS	Depositor
R, R_{free}	0.235 , 0.293 0.249 , 0.305	Depositor DCC
R_{free} test set	1786 reflections (5.41%)	DCC
Wilson B-factor (Å ²)	30.0	Xtriage
Anisotropy	0.271	Xtriage
Bulk solvent k_{sol} (e/Å ³), B_{sol} (Å ²)	0.35 , 52.8	EDS
Estimated twinning fraction	No twinning to report.	Xtriage
L-test for twinning ²	$\langle L \rangle = 0.49$, $\langle L^2 \rangle = 0.32$	Xtriage
Outliers	1 of 50518 reflections (0.002%)	Xtriage
F_o, F_c correlation	0.92	EDS
Total number of atoms	6593	wwPDB-VP
Average B, all atoms (Å ²)	39.0	wwPDB-VP

Xtriage's analysis on translational NCS is as follows: *The analyses of the Patterson function reveals a significant off-origin peak that is 38.51 % of the origin peak, indicating pseudo translational symmetry. The chance of finding a peak of this or larger height randomly in a structure without pseudo translational symmetry is equal to 3.6479e-04. The detected translational NCS is most likely also responsible for the elevated intensity ratio.*

¹Intensities estimated from amplitudes.

²Theoretical values of $\langle |L| \rangle$, $\langle L^2 \rangle$ for acentric reflections are 0.5, 0.375 respectively for untwinned datasets, and 0.333, 0.2 for perfectly twinned datasets.

5 Model quality

5.1 Standard geometry

Bond lengths and bond angles in the following residue types are not validated in this section: HEM, 226

The Z score for a bond length (or angle) is the number of standard deviations the observed value is removed from the expected value. A bond length (or angle) with $|Z| > 5$ is considered an outlier worth inspection. RMSZ is the root-mean-square of all Z scores of the bond lengths (or angles).

Mol	Chain	Bond lengths		Bond angles	
		RMSZ	# $ Z > 5$	RMSZ	# $ Z > 5$
1	A	0.40	0/3168	0.68	4/4313 (0.1%)
1	B	0.38	0/3168	0.66	1/4313 (0.0%)
All	All	0.39	0/6336	0.67	5/8626 (0.1%)

There are no bond length outliers.

All (5) bond angle outliers are listed below:

Mol	Chain	Res	Type	Atoms	Z	Observed(°)	Ideal(°)
1	A	13	PRO	N-CA-CB	5.70	110.14	103.30
1	B	13	PRO	N-CA-CB	5.45	109.84	103.30
1	A	295	GLY	N-CA-C	5.32	126.40	113.10
1	A	410	HIS	N-CA-C	5.08	124.71	111.00
1	A	339	LEU	N-CA-C	-5.04	97.38	111.00

There are no chirality outliers.

There are no planarity outliers.

5.2 Too-close contacts

In the following table, the Non-H and H(model) columns list the number of non-hydrogen atoms and hydrogen atoms in the chain respectively. The H(added) column lists the number of hydrogen atoms added and optimized by MolProbity. The Clashes column lists the number of clashes within the asymmetric unit, whereas Symm-Clashes lists symmetry related clashes.

Mol	Chain	Non-H	H(model)	H(added)	Clashes	Symm-Clashes
1	A	3094	0	3077	172	0
1	B	3094	0	3077	166	0
2	A	43	0	30	0	0
2	B	43	0	30	2	0

Continued on next page...

Continued from previous page...

Mol	Chain	Non-H	H(model)	H(added)	Clashes	Symm-Clashes
3	A	30	0	6	4	0
3	B	30	0	6	1	0
4	A	147	0	0	15	0
4	B	112	0	0	7	0
All	All	6593	0	6226	336	0

The all-atom clashscore is defined as the number of clashes found per 1000 atoms (including hydrogen atoms). The all-atom clashscore for this structure is 27.

All (336) close contacts within the same asymmetric unit are listed below, sorted by their clash magnitude.

Atom-1	Atom-2	Interatomic distance (Å)	Clash overlap (Å)
1:A:253:VAL:HA	1:A:256:MET:HE2	1.40	1.04
1:A:182:ILE:HD13	1:A:185:SER:HA	1.41	1.00
1:B:111:VAL:HG12	1:B:217:VAL:HG13	1.45	0.99
1:A:183:SER:HB3	1:A:401:ARG:HH11	1.25	0.96
1:B:342:ASP:HB2	1:B:343:PRO:HD3	1.48	0.95
1:B:303:ASP:H	1:B:313:ALA:HB2	1.32	0.95
1:A:37:MET:HG2	1:A:58:THR:HG21	1.47	0.94
1:B:207:ARG:HH12	1:B:232:GLU:HG3	1.34	0.92
1:B:342:ASP:HB2	1:B:343:PRO:CD	2.02	0.90
1:A:110:ALA:HB1	4:A:450:HOH:O	1.72	0.90
1:B:82:ILE:HD11	1:B:299:ILE:HD11	1.54	0.89
1:A:181:ILE:HD13	1:A:247:GLU:HB3	1.52	0.88
1:B:261:LEU:HB3	1:B:382:LEU:HD23	1.53	0.88
1:B:187:GLY:HA3	1:B:190:ALA:HB3	1.55	0.87
1:A:82:ILE:HD11	1:A:299:ILE:HD11	1.55	0.87
1:B:261:LEU:HB3	1:B:382:LEU:CD2	2.05	0.86
1:B:385:PRO:HD2	1:B:388:GLN:NE2	1.91	0.86
1:A:291:ARG:HD2	3:A:431:226:OAD	1.76	0.84
1:A:68:ASN:HD21	1:A:351:ASN:ND2	1.76	0.84
1:A:42:LEU:HD12	1:A:309:THR:HB	1.58	0.84
1:B:77:VAL:HG13	1:B:82:ILE:HD12	1.61	0.82
1:A:339:LEU:HB3	4:A:433:HOH:O	1.79	0.82
1:A:253:VAL:HG22	1:A:256:MET:CE	2.10	0.81
1:B:232:GLU:CD	1:B:233:THR:H	1.83	0.81
1:B:207:ARG:HG3	1:B:207:ARG:HH11	1.47	0.80
1:B:42:LEU:HD22	1:B:309:THR:HB	1.62	0.80
1:A:183:SER:CB	1:A:401:ARG:HH11	1.94	0.80
1:A:90:LYS:HB3	3:A:432:226:HAG	1.64	0.79
1:B:283:GLU:HG2	1:B:339:LEU:H	1.47	0.79

Continued on next page...

Continued from previous page...

Atom-1	Atom-2	Interatomic distance (Å)	Clash overlap (Å)
1:B:182:ILE:HG22	1:B:184:THR:H	1.45	0.79
1:A:193:ARG:HH22	1:B:144:PRO:HD2	1.49	0.78
1:A:74:ARG:NH2	1:A:296:LEU:HB2	1.99	0.78
1:B:207:ARG:HH12	1:B:232:GLU:CG	1.97	0.77
1:A:264:ARG:HG3	1:A:264:ARG:HH11	1.50	0.77
1:A:392:ARG:HG3	1:A:399:GLY:O	1.83	0.77
1:A:221:LEU:HA	4:A:450:HOH:O	1.83	0.77
1:A:33:LEU:HD21	1:A:323:ALA:HB2	1.67	0.76
1:A:37:MET:HG2	1:A:58:THR:CG2	2.16	0.75
1:B:41:PRO:O	1:B:42:LEU:HD12	1.85	0.75
1:A:33:LEU:HD23	1:A:33:LEU:O	1.88	0.74
1:B:155:PHE:HB3	1:B:156:PRO:HD3	1.68	0.74
1:A:342:ASP:OD2	1:A:343:PRO:HD2	1.88	0.73
1:B:342:ASP:CB	1:B:343:PRO:CD	2.67	0.72
1:A:205:THR:HG23	1:A:209:ARG:NH1	2.04	0.72
1:A:32:VAL:O	1:A:36:LEU:HD13	1.90	0.71
1:B:232:GLU:O	1:B:233:THR:HB	1.89	0.71
1:A:232:GLU:OE2	1:A:233:THR:N	2.24	0.70
1:B:376:ARG:HD2	4:B:476:HOH:O	1.91	0.70
1:B:64:LYS:HG3	1:B:351:ASN:OD1	1.92	0.70
1:A:68:ASN:ND2	1:A:351:ASN:ND2	2.39	0.70
1:A:291:ARG:HH12	1:A:396:MET:HE2	1.57	0.69
1:B:33:LEU:HD23	1:B:33:LEU:O	1.93	0.69
1:A:74:ARG:HH21	1:A:296:LEU:HB2	1.57	0.68
1:B:33:LEU:HD21	1:B:323:ALA:HB2	1.75	0.68
1:B:338:ASP:HB3	1:B:341:ARG:HB2	1.75	0.68
1:B:99:ALA:O	1:B:104:HIS:HB2	1.93	0.68
1:A:183:SER:HB3	1:A:401:ARG:NH1	2.05	0.68
1:A:232:GLU:O	1:A:233:THR:HB	1.92	0.67
1:A:58:THR:HG23	1:A:323:ALA:HB1	1.74	0.67
1:A:265:GLU:O	1:A:269:ARG:HD2	1.95	0.67
1:A:25:ASP:HB2	4:A:466:HOH:O	1.95	0.67
1:A:253:VAL:HA	1:A:256:MET:CE	2.23	0.66
1:B:74:ARG:NH2	1:B:296:LEU:HB3	2.10	0.66
1:A:155:PHE:HB3	1:A:156:PRO:HD3	1.77	0.66
1:A:261:LEU:HD13	1:A:382:LEU:HD23	1.76	0.66
1:A:180:GLN:NE2	1:A:195:LYS:HE2	2.11	0.65
1:A:180:GLN:HE22	1:A:195:LYS:HE2	1.61	0.65
1:A:74:ARG:HG2	1:A:97:ALA:O	1.97	0.65
1:A:208:ALA:O	1:A:209:ARG:HB2	1.96	0.65
1:B:378:PRO:HA	4:B:471:HOH:O	1.97	0.65

Continued on next page...

Continued from previous page...

Atom-1	Atom-2	Interatomic distance (Å)	Clash overlap (Å)
1:B:101:GLN:OE1	1:B:105:ASN:HB2	1.96	0.64
1:A:42:LEU:CD1	1:A:309:THR:HB	2.26	0.64
1:A:268:ALA:O	1:A:272:GLU:HG3	1.98	0.64
1:A:397:ILE:HD11	4:A:497:HOH:O	1.96	0.64
1:B:261:LEU:HD22	1:B:381:ARG:HA	1.80	0.63
1:A:84:ARG:HD3	4:A:523:HOH:O	1.99	0.62
1:B:178:THR:C	1:B:180:GLN:H	2.02	0.62
1:B:409:HIS:ND1	1:B:410:HIS:N	2.48	0.62
1:B:208:ALA:O	1:B:209:ARG:HB2	1.98	0.62
1:B:42:LEU:HD21	1:B:306:VAL:HB	1.81	0.62
1:A:244:ILE:O	1:A:244:ILE:HG22	1.99	0.62
1:A:338:ASP:O	1:A:339:LEU:HB2	1.99	0.61
1:A:181:ILE:C	1:A:182:ILE:HD12	2.20	0.61
1:A:153:GLU:HB3	1:A:154:PRO:HD3	1.82	0.61
1:A:342:ASP:HB2	1:A:343:PRO:HD2	1.82	0.61
1:A:199:TYR:OH	3:A:432:226:HAF	1.99	0.61
1:A:392:ARG:HB2	1:A:395:THR:HG21	1.81	0.61
1:A:342:ASP:HB2	1:A:343:PRO:CD	2.31	0.61
1:B:200:GLY:O	1:B:204:GLU:HG3	2.01	0.60
1:A:22:LEU:N	1:A:22:LEU:HD12	2.16	0.60
1:A:124:ARG:HB3	1:A:125:PRO:HD3	1.82	0.60
1:B:46:ARG:HH11	1:B:46:ARG:HG3	1.66	0.60
1:A:304:VAL:HG12	1:A:305:GLU:N	2.17	0.60
1:A:253:VAL:HG22	1:A:256:MET:HE3	1.83	0.60
1:A:305:GLU:HB3	1:A:310:ARG:HH11	1.66	0.59
1:A:181:ILE:HG23	1:A:247:GLU:OE2	2.03	0.59
1:A:173:ARG:HH11	1:A:173:ARG:HG3	1.67	0.59
1:A:15:PRO:HG2	1:A:17:ARG:NH1	2.17	0.59
1:A:59:ARG:HG2	1:A:59:ARG:HH11	1.68	0.59
1:B:304:VAL:HG12	1:B:305:GLU:N	2.18	0.59
1:A:193:ARG:NH2	1:B:144:PRO:HD2	2.17	0.58
1:A:143:PRO:HB2	1:A:144:PRO:HD3	1.85	0.58
1:B:385:PRO:HD2	1:B:388:GLN:HE21	1.68	0.58
1:A:374:LEU:HD23	4:A:544:HOH:O	2.03	0.58
1:B:209:ARG:HH11	1:B:209:ARG:HG3	1.69	0.58
1:B:207:ARG:HG3	1:B:207:ARG:NH1	2.17	0.58
1:B:225:VAL:HG22	1:B:230:VAL:O	2.04	0.58
1:B:108:ARG:HG3	1:B:108:ARG:HH11	1.68	0.58
1:A:223:ALA:CB	1:A:227:ARG:HH21	2.17	0.58
1:B:42:LEU:HD11	1:B:306:VAL:HG12	1.86	0.58
1:A:339:LEU:C	1:A:341:ARG:H	2.06	0.58

Continued on next page...

Continued from previous page...

Atom-1	Atom-2	Interatomic distance (Å)	Clash overlap (Å)
1:A:302:GLU:HG3	4:A:557:HOH:O	2.04	0.57
1:A:183:SER:C	1:A:185:SER:H	2.06	0.57
1:A:339:LEU:O	1:A:341:ARG:N	2.36	0.57
1:B:381:ARG:HB2	4:B:492:HOH:O	2.04	0.57
1:B:231:GLY:O	1:B:232:GLU:O	2.23	0.57
1:B:143:PRO:CD	1:B:409:HIS:HD2	2.18	0.57
1:A:374:LEU:HA	4:A:544:HOH:O	2.05	0.56
1:B:47:LEU:HD12	1:B:84:ARG:HA	1.85	0.56
1:B:182:ILE:HG21	1:B:185:SER:HA	1.87	0.56
1:B:392:ARG:HG3	1:B:399:GLY:O	2.05	0.56
1:B:182:ILE:CG2	1:B:186:GLY:H	2.19	0.56
1:B:29:PHE:CE2	1:B:33:LEU:HD22	2.41	0.56
1:B:342:ASP:OD1	1:B:343:PRO:HD2	2.06	0.56
1:B:180:GLN:O	1:B:182:ILE:HG13	2.05	0.55
1:A:74:ARG:NH2	1:A:296:LEU:CB	2.69	0.55
1:A:64:LYS:O	1:A:67:THR:HG22	2.05	0.55
1:A:207:ARG:NH2	4:A:558:HOH:O	2.35	0.55
1:A:342:ASP:CB	1:A:343:PRO:CD	2.84	0.55
1:A:69:ASP:OD2	1:A:71:ARG:HB2	2.06	0.55
1:B:143:PRO:HD3	1:B:409:HIS:HD2	1.71	0.55
1:A:124:ARG:HD3	4:A:551:HOH:O	2.07	0.55
1:A:203:THR:HG23	1:A:232:GLU:OE1	2.05	0.54
1:B:82:ILE:HD13	1:B:316:PRO:HB3	1.88	0.54
1:B:230:VAL:O	1:B:230:VAL:HG23	2.06	0.54
1:B:179:ARG:HG2	1:B:179:ARG:HH11	1.73	0.54
1:A:60:TYR:CE2	1:A:64:LYS:HD3	2.42	0.54
1:A:81:GLN:NE2	1:A:84:ARG:HH12	2.05	0.54
1:A:42:LEU:HD11	1:A:306:VAL:HB	1.89	0.54
1:B:234:GLU:O	1:B:238:LEU:HB2	2.08	0.54
1:A:101:GLN:OE1	1:A:105:ASN:HB2	2.08	0.54
1:B:182:ILE:HG21	1:B:185:SER:CA	2.38	0.53
1:A:342:ASP:CB	1:A:343:PRO:HD2	2.38	0.53
1:B:375:GLU:HG2	1:B:376:ARG:HG2	1.90	0.53
1:B:282:ASP:HB3	1:B:344:ASN:ND2	2.23	0.53
1:B:153:GLU:HB3	1:B:154:PRO:HD3	1.90	0.53
1:A:392:ARG:CB	1:A:395:THR:HG21	2.39	0.53
1:A:178:THR:C	1:A:180:GLN:H	2.11	0.53
1:A:302:GLU:O	1:A:302:GLU:HG3	2.09	0.53
1:B:181:ILE:HD11	4:B:504:HOH:O	2.09	0.53
1:A:184:THR:O	1:A:185:SER:HB2	2.08	0.53
1:B:153:GLU:OE2	1:B:181:ILE:HD12	2.08	0.52

Continued on next page...

Continued from previous page...

Atom-1	Atom-2	Interatomic distance (Å)	Clash overlap (Å)
1:B:38:ARG:HB3	1:B:38:ARG:HH11	1.74	0.52
1:B:93:PRO:HB2	1:B:233:THR:O	2.09	0.52
1:A:143:PRO:CG	1:A:409:HIS:HB2	2.40	0.52
1:B:195:LYS:HG3	1:B:196:ARG:N	2.25	0.52
1:A:77:VAL:HG13	1:A:82:ILE:HD12	1.92	0.52
1:A:338:ASP:O	1:A:339:LEU:CB	2.57	0.52
1:B:42:LEU:HD22	1:B:309:THR:CB	2.37	0.52
1:A:231:GLY:O	1:A:232:GLU:O	2.27	0.52
1:A:292:THR:HG22	1:A:396:MET:O	2.10	0.52
1:A:184:THR:HG23	1:A:393:ARG:O	2.10	0.52
1:B:143:PRO:O	1:B:406:THR:HA	2.09	0.52
1:B:114:ALA:HB1	4:B:457:HOH:O	2.10	0.52
1:B:207:ARG:NH1	1:B:232:GLU:HG3	2.15	0.51
1:B:43:THR:HG22	1:B:44:ARG:N	2.25	0.51
1:A:179:ARG:C	1:A:181:ILE:H	2.12	0.51
1:A:353:HIS:HB3	4:A:445:HOH:O	2.09	0.51
1:A:232:GLU:CD	1:A:233:THR:H	2.13	0.51
1:B:153:GLU:OE2	1:B:157:ILE:HD11	2.10	0.51
1:A:153:GLU:HB3	1:A:154:PRO:CD	2.41	0.51
1:B:74:ARG:HG2	1:B:97:ALA:O	2.11	0.51
1:B:305:GLU:HA	1:B:309:THR:O	2.11	0.50
1:B:224:ALA:HB1	1:B:229:GLU:HB3	1.92	0.50
1:B:283:GLU:HA	1:B:283:GLU:OE1	2.11	0.50
1:B:155:PHE:CD2	1:B:369:LEU:HD21	2.46	0.50
1:A:296:LEU:HD11	3:A:431:226:HAH	1.92	0.50
1:A:230:VAL:O	1:A:231:GLY:O	2.28	0.50
1:B:210:ALA:O	1:B:223:ALA:HA	2.11	0.50
1:A:56:LEU:HA	1:A:318:TYR:O	2.12	0.50
1:A:205:THR:HG23	1:A:209:ARG:CZ	2.41	0.50
1:B:247:GLU:CG	1:B:251:HIS:NE2	2.74	0.50
1:A:232:GLU:HA	1:A:232:GLU:OE2	2.11	0.50
1:B:183:SER:N	4:B:489:HOH:O	2.45	0.50
1:A:256:MET:CE	1:A:366:THR:HG23	2.41	0.49
1:A:64:LYS:HG3	1:A:347:LEU:HD11	1.94	0.49
1:A:23:ASP:OD2	1:A:393:ARG:HD2	2.11	0.49
1:A:232:GLU:OE2	1:A:232:GLU:CA	2.60	0.49
1:A:15:PRO:CG	1:A:17:ARG:HH12	2.25	0.49
1:B:224:ALA:HB1	1:B:230:VAL:HG22	1.94	0.49
1:B:301:LEU:O	1:B:313:ALA:HB1	2.11	0.49
1:A:143:PRO:HG2	1:A:409:HIS:HB2	1.95	0.49
1:B:216:ASP:OD2	1:B:216:ASP:C	2.51	0.49

Continued on next page...

Continued from previous page...

Atom-1	Atom-2	Interatomic distance (Å)	Clash overlap (Å)
1:A:168:ALA:HA	1:A:171:ARG:HD2	1.95	0.49
1:A:71:ARG:HG2	1:A:302:GLU:HG2	1.95	0.49
1:A:264:ARG:NH1	1:A:264:ARG:HG3	2.22	0.48
1:A:85:LEU:HD21	1:A:292:THR:HG23	1.94	0.48
1:A:341:ARG:O	1:A:342:ASP:O	2.31	0.48
1:B:338:ASP:O	1:B:339:LEU:HB2	2.14	0.48
1:B:23:ASP:O	1:B:23:ASP:OD1	2.32	0.48
1:A:249:VAL:HG11	1:A:365:GLN:HE21	1.79	0.48
1:B:261:LEU:CD2	1:B:381:ARG:HA	2.44	0.48
1:B:208:ALA:O	1:B:209:ARG:CB	2.59	0.48
1:A:82:ILE:HD13	1:A:316:PRO:HB3	1.94	0.48
1:A:291:ARG:HH22	1:A:396:MET:HE3	1.79	0.48
1:A:230:VAL:HG23	1:A:230:VAL:O	2.13	0.48
1:B:67:THR:HG21	1:B:351:ASN:HB3	1.95	0.48
1:A:143:PRO:HA	1:A:407:TRP:CZ2	2.49	0.48
1:B:74:ARG:HG2	1:B:74:ARG:HH11	1.78	0.47
1:A:198:LEU:CD2	1:A:244:ILE:HD11	2.44	0.47
1:B:181:ILE:HG23	1:B:247:GLU:OE2	2.14	0.47
1:A:303:ASP:H	1:A:313:ALA:HB2	1.79	0.47
1:B:192:GLU:HA	1:B:195:LYS:HG2	1.97	0.47
1:A:303:ASP:N	1:A:313:ALA:HB2	2.30	0.47
1:B:292:THR:HG22	1:B:398:ARG:HG2	1.97	0.47
1:B:41:PRO:C	1:B:42:LEU:HD12	2.34	0.47
1:B:34:ALA:O	1:B:38:ARG:HG3	2.14	0.47
1:A:162:GLU:HG2	1:A:171:ARG:HH12	1.79	0.47
1:B:232:GLU:CD	1:B:233:THR:N	2.63	0.47
1:B:209:ARG:HG3	1:B:209:ARG:NH1	2.29	0.47
1:B:221:LEU:O	1:B:225:VAL:HG23	2.15	0.47
1:B:247:GLU:HG2	1:B:251:HIS:NE2	2.30	0.47
1:A:208:ALA:O	1:A:209:ARG:CB	2.61	0.47
1:A:15:PRO:HG2	1:A:17:ARG:HH12	1.79	0.46
1:A:265:GLU:OE1	1:A:265:GLU:N	2.27	0.46
1:B:59:ARG:HH11	1:B:59:ARG:HG2	1.78	0.46
1:A:184:THR:O	1:A:185:SER:CB	2.62	0.46
1:B:16:VAL:HG11	1:B:46:ARG:NH2	2.30	0.46
1:B:159:VAL:O	1:B:162:GLU:HB2	2.16	0.46
1:B:162:GLU:HG2	1:B:171:ARG:HH22	1.81	0.46
1:A:312:ALA:HB3	1:A:315:GLU:CD	2.35	0.46
1:B:177:TRP:O	1:B:180:GLN:HB3	2.15	0.46
1:B:178:THR:C	1:B:180:GLN:N	2.69	0.45
1:A:392:ARG:NH1	1:A:395:THR:OG1	2.49	0.45

Continued on next page...

Continued from previous page...

Atom-1	Atom-2	Interatomic distance (Å)	Clash overlap (Å)
1:B:302:GLU:O	1:B:303:ASP:O	2.34	0.45
1:A:76:GLU:HB3	1:A:299:ILE:HG13	1.97	0.45
1:A:265:GLU:HG2	1:A:266:LEU:H	1.80	0.45
1:B:241:PRO:O	1:B:245:GLY:N	2.49	0.45
1:A:304:VAL:CG1	1:A:305:GLU:N	2.78	0.45
1:A:273:ARG:O	1:A:273:ARG:HG3	2.17	0.45
1:B:341:ARG:O	1:B:342:ASP:O	2.34	0.45
1:A:115:PHE:HB3	4:A:503:HOH:O	2.15	0.45
1:B:74:ARG:NH2	1:B:296:LEU:CB	2.80	0.45
1:A:29:PHE:CE2	1:A:33:LEU:HD22	2.52	0.45
1:B:59:ARG:NH1	1:B:59:ARG:HG2	2.32	0.45
1:B:33:LEU:HD23	1:B:33:LEU:C	2.37	0.45
1:A:157:ILE:HG13	4:A:560:HOH:O	2.16	0.44
1:B:92:ARG:HE	3:B:432:226:HAH	1.82	0.44
1:B:155:PHE:CB	1:B:156:PRO:HD3	2.44	0.44
1:A:339:LEU:C	1:A:341:ARG:N	2.70	0.44
1:B:223:ALA:O	1:B:227:ARG:HG3	2.17	0.44
1:B:96:LEU:HB3	2:B:430:HEM:O2D	2.16	0.44
1:A:305:GLU:HG3	1:A:305:GLU:O	2.17	0.44
1:A:67:THR:HG23	1:A:68:ASN:ND2	2.33	0.44
1:A:82:ILE:HD11	1:A:299:ILE:CD1	2.38	0.44
1:B:63:VAL:O	1:B:67:THR:HG22	2.17	0.44
1:B:225:VAL:C	1:B:227:ARG:H	2.20	0.44
1:B:353:HIS:CD2	1:B:353:HIS:H	2.35	0.44
1:B:342:ASP:CG	1:B:343:PRO:HD2	2.39	0.44
1:A:265:GLU:HG2	1:A:266:LEU:N	2.32	0.44
1:B:193:ARG:O	1:B:196:ARG:HB3	2.17	0.44
1:A:27:PRO:HG3	1:A:259:LEU:HD21	2.00	0.44
1:A:253:VAL:HG22	1:A:256:MET:HE1	1.92	0.44
1:B:153:GLU:HB3	1:B:154:PRO:CD	2.48	0.44
1:A:166:VAL:HG11	1:A:174:VAL:HG21	2.00	0.43
1:B:207:ARG:NH1	1:B:207:ARG:CG	2.78	0.43
1:A:191:ALA:C	1:A:193:ARG:H	2.21	0.43
1:B:143:PRO:HB2	1:B:144:PRO:HD3	1.99	0.43
1:A:232:GLU:C	1:A:234:GLU:H	2.20	0.43
1:B:38:ARG:HB3	1:B:38:ARG:NH1	2.33	0.43
1:B:106:ARG:NH2	1:B:234:GLU:OE1	2.51	0.43
1:B:282:ASP:HB3	1:B:344:ASN:HD22	1.83	0.43
1:A:338:ASP:OD1	1:A:338:ASP:C	2.56	0.43
1:B:171:ARG:O	1:B:175:HIS:HB2	2.18	0.43
1:B:124:ARG:HB3	1:B:125:PRO:HD3	2.01	0.43

Continued on next page...

Continued from previous page...

Atom-1	Atom-2	Interatomic distance (Å)	Clash overlap (Å)
1:B:283:GLU:HG2	1:B:339:LEU:N	2.26	0.43
1:B:261:LEU:HD13	1:B:382:LEU:HD22	2.00	0.43
1:B:185:SER:O	1:B:187:GLY:N	2.49	0.43
1:B:342:ASP:OD1	1:B:343:PRO:CD	2.66	0.43
1:A:223:ALA:HB3	1:A:227:ARG:HH21	1.84	0.42
1:B:43:THR:HG22	1:B:44:ARG:H	1.83	0.42
1:A:89:PHE:CE1	1:A:91:PRO:HD3	2.54	0.42
1:B:297:ALA:HB2	1:B:318:TYR:CZ	2.54	0.42
1:A:256:MET:O	1:A:260:LEU:HD13	2.19	0.42
1:B:74:ARG:HH21	1:B:296:LEU:HB3	1.83	0.42
1:B:292:THR:HG22	1:B:398:ARG:CG	2.49	0.42
1:A:99:ALA:O	1:A:104:HIS:HB2	2.19	0.42
1:A:342:ASP:CG	1:A:343:PRO:HD2	2.40	0.42
1:A:59:ARG:NH2	4:A:576:HOH:O	2.52	0.42
1:B:95:SER:HA	1:B:237:GLY:O	2.19	0.42
1:A:333:ASP:N	1:A:334:PRO:CD	2.82	0.42
1:B:206:VAL:HG11	1:B:225:VAL:HG21	2.01	0.42
1:B:193:ARG:HA	1:B:193:ARG:HH11	1.84	0.42
1:A:147:LEU:HA	1:A:147:LEU:HD23	1.79	0.42
1:A:62:ASP:OD1	1:A:307:HIS:ND1	2.52	0.42
1:B:221:LEU:HD13	1:B:221:LEU:O	2.20	0.42
1:A:291:ARG:HH22	1:A:396:MET:CE	2.32	0.42
1:B:74:ARG:NH1	1:B:74:ARG:HG2	2.35	0.42
1:A:183:SER:O	1:A:184:THR:HB	2.19	0.41
1:A:181:ILE:CD1	1:A:247:GLU:HB3	2.37	0.41
1:A:69:ASP:HA	1:A:70:PRO:HD3	1.87	0.41
1:B:29:PHE:HE2	1:B:33:LEU:HD22	1.84	0.41
1:B:221:LEU:HD13	1:B:225:VAL:HG23	2.02	0.41
1:B:231:GLY:C	1:B:232:GLU:O	2.59	0.41
1:B:182:ILE:CG2	1:B:186:GLY:N	2.83	0.41
1:A:280:ALA:HA	1:A:339:LEU:HD22	2.03	0.41
1:B:38:ARG:NH1	1:B:38:ARG:CB	2.83	0.41
1:A:286:ARG:HD3	1:A:344:ASN:OD1	2.19	0.41
1:B:270:MET:SD	1:B:277:ARG:HG2	2.61	0.41
1:B:178:THR:O	1:B:180:GLN:N	2.45	0.41
1:A:409:HIS:O	1:A:410:HIS:CG	2.74	0.41
1:A:89:PHE:CZ	1:A:91:PRO:HD3	2.56	0.41
1:A:293:SER:OG	1:A:294:VAL:N	2.51	0.41
1:A:342:ASP:O	1:A:343:PRO:C	2.59	0.41
1:B:392:ARG:HB2	1:B:395:THR:HG21	2.02	0.41
1:B:179:ARG:NH2	4:B:479:HOH:O	2.53	0.41

Continued on next page...

Continued from previous page...

Atom-1	Atom-2	Interatomic distance (Å)	Clash overlap (Å)
1:B:24:LEU:HD13	1:B:28:GLU:HB2	2.03	0.41
1:A:302:GLU:O	1:A:303:ASP:O	2.37	0.41
1:A:281:LEU:HD23	1:A:281:LEU:HA	1.93	0.41
1:B:349:TYR:CE2	2:B:430:HEM:HBB2	2.56	0.41
1:B:82:ILE:CD1	1:B:316:PRO:HB3	2.51	0.41
1:A:160:VAL:O	1:A:164:MET:HG2	2.21	0.41
1:B:189:GLU:HA	1:B:192:GLU:HB2	2.04	0.40
1:B:298:ARG:HG3	1:B:298:ARG:HH11	1.85	0.40
1:B:31:PRO:O	1:B:35:GLU:HG2	2.21	0.40
1:B:377:LEU:O	1:B:380:LEU:HB2	2.21	0.40
1:A:255:GLN:HB2	1:A:288:ILE:HD13	2.02	0.40
1:B:267:MET:SD	1:B:374:LEU:HD21	2.62	0.40
1:B:185:SER:C	1:B:187:GLY:H	2.25	0.40
1:A:198:LEU:HD21	1:A:244:ILE:HD11	2.04	0.40
1:B:247:GLU:HG2	1:B:251:HIS:CD2	2.56	0.40
1:B:333:ASP:N	1:B:334:PRO:CD	2.84	0.40
1:A:123:LEU:HD22	1:A:163:VAL:CG2	2.51	0.40
1:A:42:LEU:HD12	1:A:306:VAL:O	2.21	0.40
1:B:192:GLU:O	1:B:195:LYS:HG2	2.22	0.40
1:B:100:ASP:O	1:B:103:ASP:HB2	2.20	0.40

There are no symmetry-related clashes.

5.3 Torsion angles [i](#)

5.3.1 Protein backbone [i](#)

In the following table, the Percentiles column shows the percent Ramachandran outliers of the chain as a percentile score with respect to all X-ray entries followed by that with respect to entries of similar resolution.

The Analysed column shows the number of residues for which the backbone conformation was analysed, and the total number of residues.

Mol	Chain	Analysed	Favoured	Allowed	Outliers	Percentiles	
1	A	397/413 (96%)	360 (91%)	24 (6%)	13 (3%)	5	2
1	B	397/413 (96%)	351 (88%)	34 (9%)	12 (3%)	5	3
All	All	794/826 (96%)	711 (90%)	58 (7%)	25 (3%)	5	3

All (25) Ramachandran outliers are listed below:

Mol	Chain	Res	Type
1	A	143	PRO
1	A	167	PRO
1	A	185	SER
1	A	231	GLY
1	A	232	GLU
1	A	303	ASP
1	A	342	ASP
1	B	143	PRO
1	B	182	ILE
1	B	232	GLU
1	B	303	ASP
1	B	342	ASP
1	A	168	ALA
1	A	182	ILE
1	A	214	GLY
1	A	340	ASP
1	B	184	THR
1	B	264	ARG
1	A	179	ARG
1	B	179	ARG
1	B	230	VAL
1	B	235	ALA
1	B	186	GLY
1	A	230	VAL
1	B	111	VAL

5.3.2 Protein sidechains ⓘ

In the following table, the Percentiles column shows the percent sidechain outliers of the chain as a percentile score with respect to all X-ray entries followed by that with respect to entries of similar resolution.

The Analysed column shows the number of residues for which the sidechain conformation was analysed, and the total number of residues.

Mol	Chain	Analysed	Rotameric	Outliers	Percentiles	
1	A	314/329 (95%)	294 (94%)	20 (6%)	22	24
1	B	314/329 (95%)	297 (95%)	17 (5%)	27	33
All	All	628/658 (95%)	591 (94%)	37 (6%)	24	28

All (37) residues with a non-rotameric sidechain are listed below:

Mol	Chain	Res	Type
1	A	18	ASP
1	A	25	ASP
1	A	59	ARG
1	A	74	ARG
1	A	76	GLU
1	A	79	GLN
1	A	88	HIS
1	A	143	PRO
1	A	173	ARG
1	A	175	HIS
1	A	182	ILE
1	A	232	GLU
1	A	238	LEU
1	A	264	ARG
1	A	269	ARG
1	A	292	THR
1	A	303	ASP
1	A	329	ASP
1	A	343	PRO
1	A	411	HIS
1	B	18	ASP
1	B	36	LEU
1	B	58	THR
1	B	59	ARG
1	B	74	ARG
1	B	95	SER
1	B	129	GLU
1	B	143	PRO
1	B	193	ARG
1	B	232	GLU
1	B	238	LEU
1	B	260	LEU
1	B	265	GLU
1	B	269	ARG
1	B	302	GLU
1	B	305	GLU
1	B	411	HIS

Some sidechains can be flipped to improve hydrogen bonding and reduce clashes. All (13) such sidechains are listed below:

Mol	Chain	Res	Type
1	A	81	GLN
1	A	180	GLN

Continued on next page...

Continued from previous page...

Mol	Chain	Res	Type
1	A	351	ASN
1	A	365	GLN
1	B	68	ASN
1	B	81	GLN
1	B	180	GLN
1	B	252	ASN
1	B	344	ASN
1	B	351	ASN
1	B	353	HIS
1	B	365	GLN
1	B	388	GLN

5.3.3 RNA [i](#)

There are no RNA molecules in this entry.

5.4 Non-standard residues in protein, DNA, RNA chains [i](#)

There are no non-standard protein/DNA/RNA residues in this entry.

5.5 Carbohydrates [i](#)

There are no carbohydrates in this entry.

5.6 Ligand geometry [i](#)

6 ligands are modelled in this entry.

In the following table, the Counts columns list the number of bonds (or angles) for which Mogul statistics could be retrieved, the number of bonds (or angles) that are observed in the model and the number of bonds (or angles) that are defined in the chemical component dictionary. The Link column lists molecule types, if any, to which the group is linked. The Z score for a bond length (or angle) is the number of standard deviations the observed value is removed from the expected value. A bond length (or angle) with $|Z| > 2$ is considered an outlier worth inspection. RMSZ is the root-mean-square of all Z scores of the bond lengths (or angles).

Mol	Type	Chain	Res	Link	Bond lengths			Bond angles		
					Counts	RMSZ	# Z > 2	Counts	RMSZ	# Z > 2
2	HEM	A	430	1,3	30,50,50	2.67	9 (30%)	24,82,82	2.83	10 (41%)
3	226	A	431	2	16,16,16	1.88	2 (12%)	19,24,24	0.78	0

Mol	Type	Chain	Res	Link	Bond lengths			Bond angles		
					Counts	RMSZ	# Z > 2	Counts	RMSZ	# Z > 2
3	226	A	432	-	16,16,16	1.84	2 (12%)	19,24,24	0.82	0
2	HEM	B	430	1,3	30,50,50	2.55	7 (23%)	24,82,82	2.84	11 (45%)
3	226	B	431	2	16,16,16	1.75	2 (12%)	19,24,24	0.76	1 (5%)
3	226	B	432	-	16,16,16	1.79	2 (12%)	19,24,24	0.76	0

In the following table, the Chirals column lists the number of chiral outliers, the number of chiral centers analysed, the number of these observed in the model and the number defined in the chemical component dictionary. Similar counts are reported in the Torsion and Rings columns. '-' means no outliers of that kind were identified.

Mol	Type	Chain	Res	Link	Chirals	Torsions	Rings
2	HEM	A	430	1,3	-	0/10/54/54	0/0/8/8
3	226	A	431	2	-	0/0/0/0	0/2/2/2
3	226	A	432	-	-	0/0/0/0	0/2/2/2
2	HEM	B	430	1,3	-	0/10/54/54	0/0/8/8
3	226	B	431	2	-	0/0/0/0	0/2/2/2
3	226	B	432	-	-	0/0/0/0	0/2/2/2

All (24) bond length outliers are listed below:

Mol	Chain	Res	Type	Atoms	Z	Observed(Å)	Ideal(Å)
2	A	430	HEM	C3B-C4B	-7.39	1.45	1.51
2	B	430	HEM	C3B-C4B	-7.38	1.45	1.51
2	B	430	HEM	C2D-C3D	-6.26	1.35	1.54
2	A	430	HEM	C2D-C3D	-6.14	1.36	1.54
3	A	431	226	OAA-CAL	-5.47	1.22	1.35
3	A	432	226	OAA-CAL	-5.18	1.22	1.35
2	A	430	HEM	C3D-C4D	-4.97	1.45	1.51
3	B	432	226	OAA-CAL	-4.86	1.23	1.35
3	B	431	226	OAA-CAL	-4.58	1.24	1.35
3	B	431	226	OAB-CAM	-3.54	1.22	1.35
3	B	432	226	OAB-CAM	-3.45	1.23	1.35
2	B	430	HEM	C3D-C4D	-3.41	1.47	1.51
3	A	432	226	OAB-CAM	-3.22	1.23	1.35
3	A	431	226	OAB-CAM	-3.16	1.24	1.35
2	A	430	HEM	C2C-C1C	-2.62	1.47	1.52
2	A	430	HEM	C3C-CAC	2.79	1.56	1.51
2	B	430	HEM	C3C-CAC	2.90	1.56	1.51
2	A	430	HEM	C3B-CAB	3.03	1.57	1.51
2	B	430	HEM	C4C-NC	3.09	1.39	1.36
2	A	430	HEM	C4C-NC	3.38	1.40	1.36

Continued on next page...

Continued from previous page...

Mol	Chain	Res	Type	Atoms	Z	Observed(Å)	Ideal(Å)
2	B	430	HEM	CBB-CAB	4.30	1.54	1.29
2	A	430	HEM	CBB-CAB	4.35	1.54	1.29
2	A	430	HEM	CBC-CAC	4.37	1.54	1.29
2	B	430	HEM	CBC-CAC	4.45	1.55	1.29

All (22) bond angle outliers are listed below:

Mol	Chain	Res	Type	Atoms	Z	Observed(°)	Ideal(°)
2	B	430	HEM	C3B-CAB-CBB	-6.20	114.95	124.46
2	A	430	HEM	C3B-CAB-CBB	-6.08	115.12	124.46
2	A	430	HEM	C3C-CAC-CBC	-5.28	116.35	124.46
2	B	430	HEM	C3C-CAC-CBC	-4.78	117.13	124.46
2	A	430	HEM	CAA-C2A-C1A	-2.69	124.08	127.01
2	B	430	HEM	CAA-C2A-C1A	-2.57	124.21	127.01
2	B	430	HEM	CMA-C3A-C4A	-2.21	124.71	128.36
3	B	431	226	OAB-CAM-CAN	2.08	120.80	116.52
2	A	430	HEM	C3B-C4B-CHC	2.36	126.49	123.16
2	B	430	HEM	C3B-C4B-CHC	2.43	126.59	123.16
2	A	430	HEM	CMD-C2D-C3D	2.92	127.25	114.35
2	A	430	HEM	C2D-C3D-C4D	2.93	106.47	101.50
2	B	430	HEM	CMD-C2D-C3D	3.04	127.78	114.35
2	B	430	HEM	C2D-C3D-C4D	3.23	106.97	101.50
2	B	430	HEM	CAD-C3D-C4D	3.93	126.32	112.47
2	A	430	HEM	CAD-C3D-C4D	4.02	126.66	112.47
2	B	430	HEM	CAD-C3D-C2D	4.69	126.70	113.22
2	A	430	HEM	CAD-C3D-C2D	4.75	126.87	113.22
2	A	430	HEM	CMB-C2B-C3B	4.78	128.45	116.53
2	B	430	HEM	CMB-C2B-C3B	4.78	128.46	116.53
2	A	430	HEM	CMC-C2C-C3C	4.88	128.72	116.53
2	B	430	HEM	CMC-C2C-C3C	5.01	129.03	116.53

There are no chirality outliers.

There are no torsion outliers.

There are no ring outliers.

4 monomers are involved in 7 short contacts:

Mol	Chain	Res	Type	Clashes	Symm-Clashes
3	A	431	226	2	0
3	A	432	226	2	0
2	B	430	HEM	2	0
3	B	432	226	1	0

5.7 Other polymers

There are no such residues in this entry.

5.8 Polymer linkage issues

There are no chain breaks in this entry.

6 Fit of model and data ⓘ

6.1 Protein, DNA and RNA chains ⓘ

In the following table, the column labelled ‘#RSRZ> 2’ contains the number (and percentage) of RSRZ outliers, followed by percent RSRZ outliers for the chain as percentile scores relative to all X-ray entries and entries of similar resolution. The OWAB column contains the minimum, median, 95th percentile and maximum values of the occupancy-weighted average B-factor per residue. The column labelled ‘Q< 0.9’ lists the number of (and percentage) of residues with an average occupancy less than 0.9.

Mol	Chain	Analysed	<RSRZ>	#RSRZ>2	OWAB(Å ²)	Q<0.9
1	A	399/413 (96%)	0.20	15 (3%) 44 58	15, 35, 57, 80	0
1	B	399/413 (96%)	0.47	27 (6%) 20 31	20, 41, 70, 88	0
All	All	798/826 (96%)	0.34	42 (5%) 30 45	15, 38, 65, 88	0

All (42) RSRZ outliers are listed below:

Mol	Chain	Res	Type	RSRZ
1	B	185	SER	7.7
1	A	184	THR	6.4
1	A	343	PRO	5.8
1	A	230	VAL	5.1
1	B	184	THR	4.4
1	B	212	SER	4.4
1	B	211	GLY	3.8
1	B	190	ALA	3.6
1	A	307	HIS	3.3
1	A	410	HIS	3.3
1	A	342	ASP	3.1
1	B	179	ARG	3.1
1	B	229	GLU	3.1
1	B	330	VAL	2.9
1	A	88	HIS	2.9
1	B	188	ALA	2.8
1	B	228	GLY	2.8
1	A	185	SER	2.7
1	A	179	ARG	2.7
1	B	189	GLU	2.7
1	B	181	ILE	2.7
1	B	307	HIS	2.6
1	B	143	PRO	2.5
1	A	181	ILE	2.4

Continued on next page...

Continued from previous page...

Mol	Chain	Res	Type	RSRZ
1	B	210	ALA	2.4
1	B	17	ARG	2.3
1	A	295	GLY	2.2
1	B	233	THR	2.2
1	A	210	ALA	2.2
1	A	143	PRO	2.2
1	A	311	ILE	2.2
1	B	22	LEU	2.2
1	A	211	GLY	2.1
1	B	213	GLU	2.1
1	B	182	ILE	2.1
1	B	310	ARG	2.1
1	B	409	HIS	2.1
1	B	24	LEU	2.1
1	B	225	VAL	2.1
1	B	38	ARG	2.0
1	B	227	ARG	2.0
1	B	88	HIS	2.0

6.2 Non-standard residues in protein, DNA, RNA chains [i](#)

There are no non-standard protein/DNA/RNA residues in this entry.

6.3 Carbohydrates [i](#)

There are no carbohydrates in this entry.

6.4 Ligands [i](#)

In the following table, the Atoms column lists the number of modelled atoms in the group and the number defined in the chemical component dictionary. LLDF column lists the quality of electron density of the group with respect to its neighbouring residues in protein, DNA or RNA chains. The B-factors column lists the minimum, median, 95th percentile and maximum values of B factors of atoms in the group. The column labelled 'Q< 0.9' lists the number of atoms with occupancy less than 0.9.

Mol	Type	Chain	Res	Atoms	RSCC	RSR	LLDF	B-factors(Å ²)	Q<0.9
3	226	B	431	15/15	0.45	0.67	13.03	55,56,58,58	15
3	226	B	432	15/15	0.53	0.40	5.46	56,57,58,58	15
3	226	A	431	15/15	0.63	0.35	4.32	57,59,61,61	0

Continued on next page...

Continued from previous page...

Mol	Type	Chain	Res	Atoms	RSCC	RSR	LLDF	B-factors(\AA^2)	Q<0.9
3	226	A	432	15/15	0.56	0.29	1.65	54,58,59,62	0
2	HEM	A	430	43/43	0.96	0.14	0.48	21,26,31,32	0
2	HEM	B	430	43/43	0.95	0.15	0.39	27,30,36,39	0

6.5 Other polymers [i](#)

There are no such residues in this entry.