



Full wwPDB X-ray Structure Validation Report ⓘ

Feb 1, 2016 – 11:04 AM GMT

PDB ID : 3O01
Title : The Crystal Structure of the Salmonella Type III Secretion System Tip Protein SipD in Complex with Deoxycholate
Authors : Chatterjee, S.; Zhong, D.; Nordhues, B.A.; Battaile, K.P.; Lovell, S.; DeGuzman, R.N.
Deposited on : 2010-07-18
Resolution : 1.90 Å(reported)

This is a Full wwPDB X-ray Structure Validation Report for a publicly released PDB entry.
We welcome your comments at validation@mail.wwpdb.org
A user guide is available at
<http://wwpdb.org/validation/2016/XrayValidationReportHelp>
with specific help available everywhere you see the ⓘ symbol.

The following versions of software and data (see [references ⓘ](#)) were used in the production of this report:

MolProbity : 4.02b-467
Mogul : 1.7 (RC4), CSD as536be (2015)
Xtriage (Phenix) : 1.9-1692
EDS : rb-20026688
Percentile statistics : 20151230.v01 (using entries in the PDB archive December 30th 2015)
Refmac : 5.8.0135
CCP4 : 6.5.0
Ideal geometry (proteins) : Engh & Huber (2001)
Ideal geometry (DNA, RNA) : Parkinson et al. (1996)
Validation Pipeline (wwPDB-VP) : trunk26865

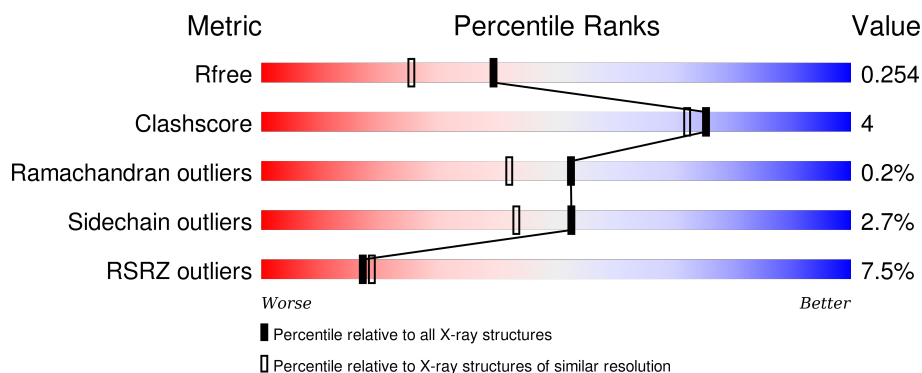
1 Overall quality at a glance

The following experimental techniques were used to determine the structure:

X-RAY DIFFRACTION

The reported resolution of this entry is 1.90 Å.

Percentile scores (ranging between 0-100) for global validation metrics of the entry are shown in the following graphic. The table shows the number of entries on which the scores are based.



Metric	Whole archive (#Entries)	Similar resolution (#Entries, resolution range(Å))
R_{free}	91344	4755 (1.90-1.90)
Clashscore	102246	5398 (1.90-1.90)
Ramachandran outliers	100387	5338 (1.90-1.90)
Sidechain outliers	100360	5339 (1.90-1.90)
RSRZ outliers	91569	4766 (1.90-1.90)

The table below summarises the geometric issues observed across the polymeric chains and their fit to the electron density. The red, orange, yellow and green segments on the lower bar indicate the fraction of residues that contain outliers for ≥ 3 , 2, 1 and 0 types of geometric quality criteria. A grey segment represents the fraction of residues that are not modelled. The numeric value for each fraction is indicated below the corresponding segment, with a dot representing fractions $\leq 5\%$. The upper red bar (where present) indicates the fraction of residues that have poor fit to the electron density. The numeric value is given above the bar.

Mol	Chain	Length	Quality of chain
1	A	308	
1	B	308	

2 Entry composition

There are 4 unique types of molecules in this entry. The entry contains 4915 atoms, of which 0 are hydrogens and 0 are deuteriums.

In the tables below, the ZeroOcc column contains the number of atoms modelled with zero occupancy, the AltConf column contains the number of residues with at least one atom in alternate conformation and the Trace column contains the number of residues modelled with at most 2 atoms.

- Molecule 1 is a protein called Cell invasion protein sipD.

Mol	Chain	Residues	Atoms					ZeroOcc	AltConf	Trace
1	A	283	Total	C	N	O	S	12	13	0
			2234	1394	373	461	6			
1	B	280	Total	C	N	O	S	0	7	0
			2167	1358	357	447	5			

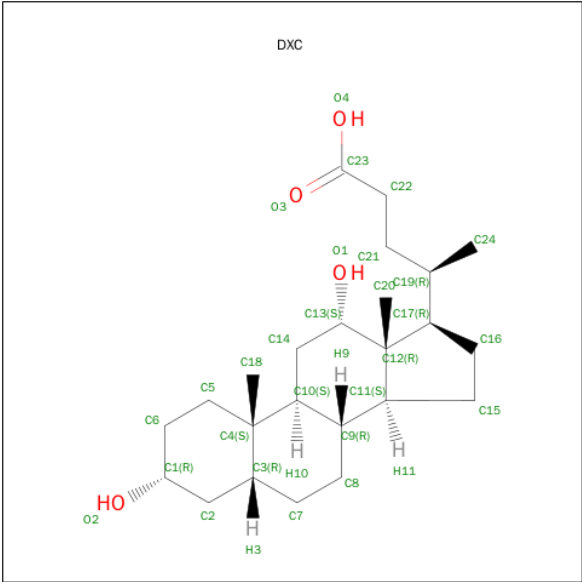
There are 8 discrepancies between the modelled and reference sequences:

Chain	Residue	Modelled	Actual	Comment	Reference
A	36	GLY	-	EXPRESSION TAG	UNP Q56026
A	37	HIS	-	EXPRESSION TAG	UNP Q56026
A	38	MET	-	EXPRESSION TAG	UNP Q56026
A	244	SER	CYS	ENGINEERED MUTATION	UNP Q56026
B	36	GLY	-	EXPRESSION TAG	UNP Q56026
B	37	HIS	-	EXPRESSION TAG	UNP Q56026
B	38	MET	-	EXPRESSION TAG	UNP Q56026
B	244	SER	CYS	ENGINEERED MUTATION	UNP Q56026

- Molecule 2 is NICKEL (II) ION (three-letter code: NI) (formula: Ni).

Mol	Chain	Residues	Atoms		ZeroOcc	AltConf
2	A	1	Total	Ni	0	0
			1	1		

- Molecule 3 is (3ALPHA,5BETA,12ALPHA)-3,12-DIHYDROXYCHOLAN-24-OIC ACID (three-letter code: DXC) (formula: C₂₄H₄₀O₄).



Mol	Chain	Residues	Atoms		ZeroOcc	AltConf
3	B	1	Total	C O	0	0
			28	24 4		

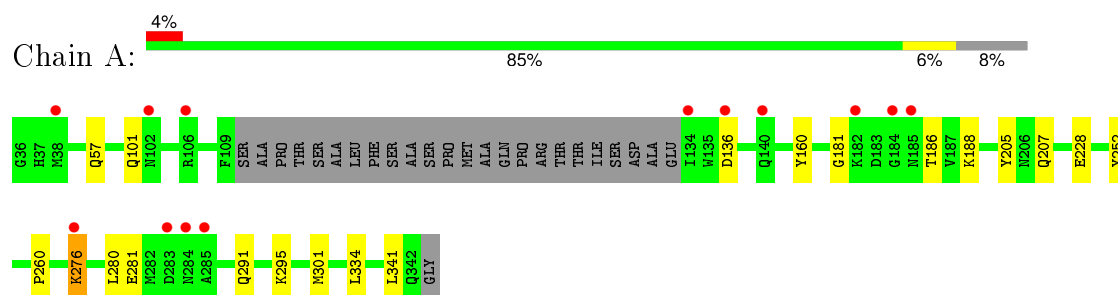
- Molecule 4 is water.

Mol	Chain	Residues	Atoms		ZeroOcc	AltConf
4	A	246	Total	O	0	0
			246	246		
4	B	239	Total	O	0	0
			239	239		

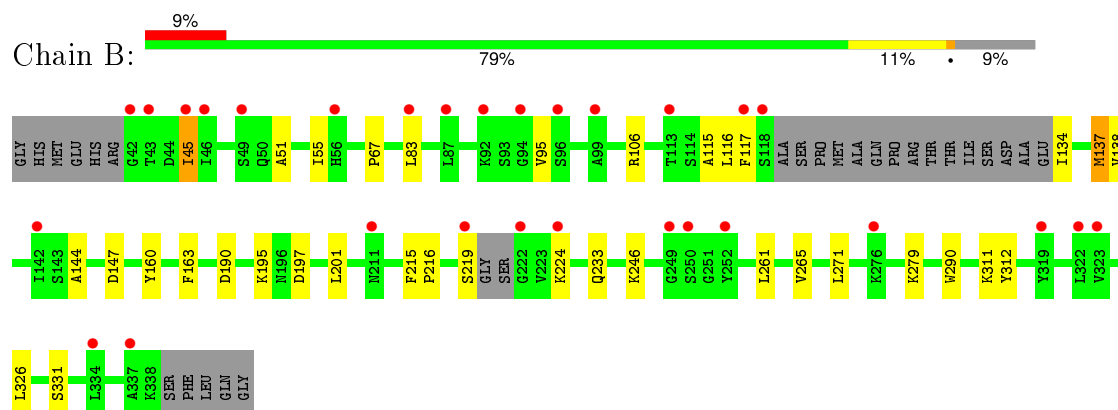
3 Residue-property plots [i](#)

These plots are drawn for all protein, RNA and DNA chains in the entry. The first graphic for a chain summarises the proportions of errors displayed in the second graphic. The second graphic shows the sequence view annotated by issues in geometry and electron density. Residues are color-coded according to the number of geometric quality criteria for which they contain at least one outlier: green = 0, yellow = 1, orange = 2 and red = 3 or more. A red dot above a residue indicates a poor fit to the electron density ($\text{RSRZ} > 2$). Stretches of 2 or more consecutive residues without any outlier are shown as a green connector. Residues present in the sample, but not in the model, are shown in grey.

• Molecule 1: Cell invasion protein sipD



• Molecule 1: Cell invasion protein sipD



4 Data and refinement statistics

Property	Value	Source
Space group	C 1 2 1	Depositor
Cell constants a, b, c, α , β , γ	201.93Å 52.33Å 57.31Å 90.00° 90.34° 90.00°	Depositor
Resolution (Å)	25.33 – 1.90 25.26 – 1.90	Depositor EDS
% Data completeness (in resolution range)	98.6 (25.33-1.90) 98.6 (25.26-1.90)	Depositor EDS
R_{merge}	0.05	Depositor
R_{sym}	(Not available)	Depositor
$\langle I/\sigma(I) \rangle$ ¹	1.97 (at 1.90Å)	Xtriage
Refinement program	REFMAC 5.2.0019	Depositor
R, R_{free}	0.196 , 0.257 0.195 , 0.254	Depositor DCC
R_{free} test set	2373 reflections (5.34%)	DCC
Wilson B-factor (Å ²)	26.6	Xtriage
Anisotropy	0.035	Xtriage
Bulk solvent k_{sol} (e/Å ³), B_{sol} (Å ²)	0.37 , 53.7	EDS
Estimated twinning fraction	0.021 for -h,-k,l	Xtriage
L-test for twinning ²	$\langle L \rangle = 0.50$, $\langle L^2 \rangle = 0.33$	Xtriage
Outliers	1 of 46814 reflections (0.002%)	Xtriage
F_o, F_c correlation	0.95	EDS
Total number of atoms	4915	wwPDB-VP
Average B, all atoms (Å ²)	28.0	wwPDB-VP

Xtriage's analysis on translational NCS is as follows: *The largest off-origin peak in the Patterson function is 7.70% of the height of the origin peak. No significant pseudotranslation is detected.*

¹Intensities estimated from amplitudes.

²Theoretical values of $\langle |L| \rangle$, $\langle L^2 \rangle$ for acentric reflections are 0.5, 0.375 respectively for untwinned datasets, and 0.333, 0.2 for perfectly twinned datasets.

5 Model quality [i](#)

5.1 Standard geometry [i](#)

Bond lengths and bond angles in the following residue types are not validated in this section: NI, DXC

The Z score for a bond length (or angle) is the number of standard deviations the observed value is removed from the expected value. A bond length (or angle) with $|Z| > 5$ is considered an outlier worth inspection. RMSZ is the root-mean-square of all Z scores of the bond lengths (or angles).

Mol	Chain	Bond lengths		Bond angles	
		RMSZ	$\# Z > 5$	RMSZ	$\# Z > 5$
1	A	0.76	1/2308 (0.0%)	0.68	0/3125
1	B	0.70	0/2217	0.65	1/3005 (0.0%)
All	All	0.73	1/4525 (0.0%)	0.66	1/6130 (0.0%)

All (1) bond length outliers are listed below:

Mol	Chain	Res	Type	Atoms	Z	Observed(Å)	Ideal(Å)
1	A	205	TYR	CD1-CE1	5.48	1.47	1.39

All (1) bond angle outliers are listed below:

Mol	Chain	Res	Type	Atoms	Z	Observed(°)	Ideal(°)
1	B	116	LEU	CA-CB-CG	5.52	128.00	115.30

There are no chirality outliers.

There are no planarity outliers.

5.2 Too-close contacts [i](#)

In the following table, the Non-H and H(model) columns list the number of non-hydrogen atoms and hydrogen atoms in the chain respectively. The H(added) column lists the number of hydrogen atoms added and optimized by MolProbity. The Clashes column lists the number of clashes within the asymmetric unit, whereas Symm-Clashes lists symmetry related clashes.

Mol	Chain	Non-H	H(model)	H(added)	Clashes	Symm-Clashes
1	A	2234	0	2230	10	0
1	B	2167	0	2167	25	0
2	A	1	0	0	0	0
3	B	28	0	39	1	0

Continued on next page...

Continued from previous page...

Mol	Chain	Non-H	H(model)	H(added)	Clashes	Symm-Clashes
4	A	246	0	0	1	0
4	B	239	0	0	2	0
All	All	4915	0	4436	34	0

The all-atom clashscore is defined as the number of clashes found per 1000 atoms (including hydrogen atoms). The all-atom clashscore for this structure is 4.

All (34) close contacts within the same asymmetric unit are listed below, sorted by their clash magnitude.

Atom-1	Atom-2	Interatomic distance (Å)	Clash overlap (Å)
1:B:138:VAL:HG11	1:B:326:LEU:HD21	1.70	0.73
1:B:246:LYS:HD3	4:B:501:HOH:O	1.92	0.69
1:B:117:PHE:O	1:B:144:ALA:HB1	2.00	0.61
1:A:188:LYS:HE3	1:A:281[B]:GLU:HG2	1.82	0.60
1:B:51:ALA:O	1:B:55:ILE:HG12	2.02	0.60
1:A:181:GLY:HA3	1:A:186:THR:HG23	1.84	0.59
1:B:106:ARG:HG2	1:B:137:MET:HE3	1.84	0.58
1:B:147:ASP:OD1	4:B:414:HOH:O	2.16	0.58
1:A:57:GLN:HE22	1:B:311:LYS:NZ	2.05	0.54
1:B:163:PHE:CE1	1:B:201[B]:LEU:HD21	2.43	0.53
1:B:55:ILE:HD12	1:B:83:LEU:HG	1.89	0.53
1:B:106:ARG:HA	1:B:137:MET:HE1	1.91	0.52
1:B:67:PRO:HG3	1:B:312:TYR:CZ	2.44	0.52
1:A:57:GLN:HE22	1:B:311:LYS:HZ1	1.57	0.52
1:A:291:GLN:O	1:A:295:LYS:HG2	2.10	0.51
1:B:215:PHE:CD1	1:B:216:PRO:HA	2.47	0.50
1:A:188:LYS:CE	1:A:281[B]:GLU:HG2	2.45	0.46
1:B:115:ALA:H	1:B:233:GLN:HE22	1.63	0.46
3:B:1:DXC:H242	3:B:1:DXC:H13	1.98	0.45
1:A:260:PRO:HG2	1:A:301:MET:HG3	1.99	0.45
1:B:190:ASP:HA	1:B:279:LYS:HG2	2.00	0.43
1:A:101:GLN:HG2	4:A:418:HOH:O	2.19	0.43
1:B:163:PHE:HE1	1:B:201[B]:LEU:HD21	1.83	0.43
1:A:228:GLU:HB2	1:A:252:TYR:CE2	2.55	0.42
1:B:195:LYS:HG3	1:B:265:VAL:HG13	2.02	0.42
1:B:271:LEU:HD21	1:B:290:TRP:HB2	2.03	0.41
1:B:45:ILE:H	1:B:45:ILE:HD13	1.85	0.41
1:B:201[B]:LEU:HD22	1:B:261:LEU:CD1	2.51	0.41
1:A:276:LYS:HG2	1:A:276:LYS:H	1.66	0.41
1:B:201[B]:LEU:HD22	1:B:261:LEU:HD13	2.02	0.41
1:B:219[A]:SER:HG	1:B:224:LYS:HZ3	1.69	0.40

There are no symmetry-related clashes.

5.3 Torsion angles [i](#)

5.3.1 Protein backbone [i](#)

In the following table, the Percentiles column shows the percent Ramachandran outliers of the chain as a percentile score with respect to all X-ray entries followed by that with respect to entries of similar resolution.

The Analysed column shows the number of residues for which the backbone conformation was analysed, and the total number of residues.

Mol	Chain	Analysed	Favoured	Allowed	Outliers	Percentiles	
1	A	293/308 (95%)	291 (99%)	2 (1%)	0	100	100
1	B	280/308 (91%)	274 (98%)	5 (2%)	1 (0%)	39	27
All	All	573/616 (93%)	565 (99%)	7 (1%)	1 (0%)	52	42

All (1) Ramachandran outliers are listed below:

Mol	Chain	Res	Type
1	B	95	VAL

5.3.2 Protein sidechains [i](#)

In the following table, the Percentiles column shows the percent sidechain outliers of the chain as a percentile score with respect to all X-ray entries followed by that with respect to entries of similar resolution.

The Analysed column shows the number of residues for which the sidechain conformation was analysed, and the total number of residues.

Mol	Chain	Analysed	Rotameric	Outliers	Percentiles	
1	A	259/264 (98%)	251 (97%)	8 (3%)	47	37
1	B	249/264 (94%)	243 (98%)	6 (2%)	57	49
All	All	508/528 (96%)	494 (97%)	14 (3%)	52	41

All (14) residues with a non-rotameric sidechain are listed below:

Mol	Chain	Res	Type
1	A	136	ASP
1	A	160	TYR

Continued on next page...

Continued from previous page...

Mol	Chain	Res	Type
1	A	207[A]	GLN
1	A	207[B]	GLN
1	A	276	LYS
1	A	280	LEU
1	A	334	LEU
1	A	341	LEU
1	B	45	ILE
1	B	134	ILE
1	B	137	MET
1	B	160	TYR
1	B	197	ASP
1	B	331	SER

Some sidechains can be flipped to improve hydrogen bonding and reduce clashes. All (10) such sidechains are listed below:

Mol	Chain	Res	Type
1	A	57	GLN
1	A	88	ASN
1	A	185	ASN
1	A	242	ASN
1	A	284	ASN
1	A	321	ASN
1	A	342	GLN
1	B	203	ASN
1	B	233	GLN
1	B	310	GLN

5.3.3 RNA ⓘ

There are no RNA molecules in this entry.

5.4 Non-standard residues in protein, DNA, RNA chains ⓘ

There are no non-standard protein/DNA/RNA residues in this entry.

5.5 Carbohydrates ⓘ

There are no carbohydrates in this entry.

5.6 Ligand geometry

Of 2 ligands modelled in this entry, 1 is monoatomic - leaving 1 for Mogul analysis.

In the following table, the Counts columns list the number of bonds (or angles) for which Mogul statistics could be retrieved, the number of bonds (or angles) that are observed in the model and the number of bonds (or angles) that are defined in the chemical component dictionary. The Link column lists molecule types, if any, to which the group is linked. The Z score for a bond length (or angle) is the number of standard deviations the observed value is removed from the expected value. A bond length (or angle) with $|Z| > 2$ is considered an outlier worth inspection. RMSZ is the root-mean-square of all Z scores of the bond lengths (or angles).

Mol	Type	Chain	Res	Link	Bond lengths			Bond angles		
					Counts	RMSZ	$\# Z > 2$	Counts	RMSZ	$\# Z > 2$
3	DXC	B	1	-	28,31,31	0.68	0	46,49,49	1.39	8 (17%)

In the following table, the Chirals column lists the number of chiral outliers, the number of chiral centers analysed, the number of these observed in the model and the number defined in the chemical component dictionary. Similar counts are reported in the Torsion and Rings columns. '-' means no outliers of that kind were identified.

Mol	Type	Chain	Res	Link	Chirals	Torsions	Rings
3	DXC	B	1	-	-	0/7/71/71	0/4/4/4

There are no bond length outliers.

All (8) bond angle outliers are listed below:

Mol	Chain	Res	Type	Atoms	Z	Observed(°)	Ideal(°)
3	B	1	DXC	C11-C12-C13	-3.41	104.33	107.39
3	B	1	DXC	C14-C10-C4	-2.44	111.26	113.79
3	B	1	DXC	C22-C21-C19	-2.36	111.98	114.75
3	B	1	DXC	C10-C14-C13	-2.12	111.69	114.36
3	B	1	DXC	C3-C2-C1	2.01	115.90	112.91
3	B	1	DXC	C2-C3-C4	2.03	114.89	112.66
3	B	1	DXC	C8-C9-C10	2.38	113.31	110.46
3	B	1	DXC	C4-C10-C9	2.40	115.07	112.40

There are no chirality outliers.

There are no torsion outliers.

There are no ring outliers.

1 monomer is involved in 1 short contact:

Mol	Chain	Res	Type	Clashes	Symm-Clashes
3	B	1	DXC	1	0

5.7 Other polymers [i](#)

There are no such residues in this entry.

5.8 Polymer linkage issues [i](#)

There are no chain breaks in this entry.

6 Fit of model and data ⓘ

6.1 Protein, DNA and RNA chains ⓘ

In the following table, the column labelled ‘#RSRZ> 2’ contains the number (and percentage) of RSRZ outliers, followed by percent RSRZ outliers for the chain as percentile scores relative to all X-ray entries and entries of similar resolution. The OWAB column contains the minimum, median, 95th percentile and maximum values of the occupancy-weighted average B-factor per residue. The column labelled ‘Q< 0.9’ lists the number of (and percentage) of residues with an average occupancy less than 0.9.

Mol	Chain	Analysed	<RSRZ>	#RSRZ>2	OWAB(Å ²)	Q<0.9
1	A	283/308 (91%)	0.20	13 (4%) 36 39	14, 26, 43, 48	0
1	B	280/308 (90%)	0.48	29 (10%) 8 9	16, 26, 51, 61	0
All	All	563/616 (91%)	0.34	42 (7%) 17 19	14, 26, 46, 61	0

All (42) RSRZ outliers are listed below:

Mol	Chain	Res	Type	RSRZ
1	B	113	THR	5.7
1	B	250	SER	4.8
1	B	43	THR	4.7
1	B	46	ILE	4.3
1	B	337	ALA	4.1
1	B	118	SER	3.7
1	B	222	GLY	3.6
1	B	42	GLY	3.5
1	B	99	ALA	3.4
1	B	219[A]	SER	3.4
1	B	334	LEU	3.3
1	A	38	MET	3.3
1	B	94	GLY	3.2
1	A	140	GLN	3.2
1	B	276	LYS	3.2
1	A	185	ASN	3.1
1	B	45	ILE	3.0
1	B	142	ILE	3.0
1	A	136	ASP	2.9
1	B	87	LEU	2.8
1	B	92	LYS	2.8
1	A	184	GLY	2.7
1	A	182[A]	LYS	2.6
1	A	276	LYS	2.6

Continued on next page...

Continued from previous page...

Mol	Chain	Res	Type	RSRZ
1	A	102	ASN	2.5
1	B	83	LEU	2.5
1	A	106	ARG	2.4
1	B	211	ASN	2.4
1	A	285	ALA	2.3
1	A	284	ASN	2.3
1	B	117	PHE	2.3
1	A	283	ASP	2.2
1	B	49	SER	2.2
1	B	319	TYR	2.2
1	B	96	SER	2.1
1	B	249	GLY	2.1
1	B	323	VAL	2.1
1	B	322	LEU	2.1
1	B	56	HIS	2.0
1	B	224	LYS	2.0
1	B	252	TYR	2.0
1	A	134	ILE	2.0

6.2 Non-standard residues in protein, DNA, RNA chains [i](#)

There are no non-standard protein/DNA/RNA residues in this entry.

6.3 Carbohydrates [i](#)

There are no carbohydrates in this entry.

6.4 Ligands [i](#)

In the following table, the Atoms column lists the number of modelled atoms in the group and the number defined in the chemical component dictionary. LLDF column lists the quality of electron density of the group with respect to its neighbouring residues in protein, DNA or RNA chains. The B-factors column lists the minimum, median, 95th percentile and maximum values of B factors of atoms in the group. The column labelled 'Q< 0.9' lists the number of atoms with occupancy less than 0.9.

Mol	Type	Chain	Res	Atoms	RSCC	RSR	LLDF	B-factors(Å ²)	Q<0.9
3	DXC	B	1	28/28	0.93	0.10	-0.25	21,24,31,35	0
2	NI	A	1	1/1	0.99	0.06	-	25,25,25,25	0

6.5 Other polymers

There are no such residues in this entry.