



# Full wwPDB X-ray Structure Validation Report ⓘ

Jan 31, 2016 – 09:15 PM GMT

PDB ID : 1O5F  
Title : Dissecting and Designing Inhibitor Selectivity Determinants at the S1 site Using an Artificial Ala190 Protease (Ala190 uPA)  
Authors : Katz, B.A.; Luong, C.; Ho, J.D.; Somoza, J.R.; Gjerstad, E.; Tang, J.; Williams, S.R.; Verner, E.; Mackman, R.L.; Young, W.B.; Sprengeler, P.A.; Chan, H.; Mortara, K.; Janc, J.W.; McGrath, M.E.  
Deposited on : 2003-09-09  
Resolution : 1.78 Å(reported)

This is a Full wwPDB X-ray Structure Validation Report for a publicly released PDB entry.  
We welcome your comments at [validation@mail.wwpdb.org](mailto:validation@mail.wwpdb.org)  
A user guide is available at  
<http://wwpdb.org/validation/2016/XrayValidationReportHelp>  
with specific help available everywhere you see the ⓘ symbol.

---

The following versions of software and data (see [references ⓘ](#)) were used in the production of this report:

MolProbity : 4.02b-467  
Mogul : 1.7 (RC4), CSD as536be (2015)  
Xtriage (Phenix) : 1.9-1692  
EDS : rb-20026688  
Percentile statistics : 20151230.v01 (using entries in the PDB archive December 30th 2015)  
Refmac : 5.8.0135  
CCP4 : 6.5.0  
Ideal geometry (proteins) : Engh & Huber (2001)  
Ideal geometry (DNA, RNA) : Parkinson et al. (1996)  
Validation Pipeline (wwPDB-VP) : trunk26865

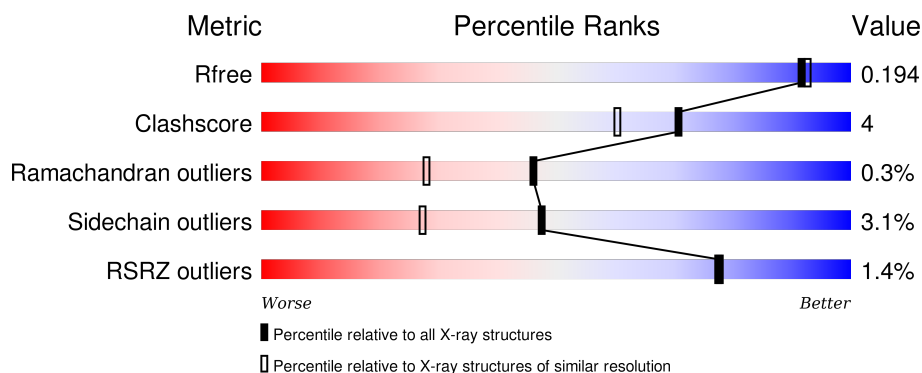
# 1 Overall quality at a glance

The following experimental techniques were used to determine the structure:

## *X-RAY DIFFRACTION*

The reported resolution of this entry is 1.78 Å.

Percentile scores (ranging between 0-100) for global validation metrics of the entry are shown in the following graphic. The table shows the number of entries on which the scores are based.



Metric	Whole archive (#Entries)	Similar resolution (#Entries, resolution range(Å))
$R_{free}$	91344	6655 (1.80-1.76)
Clashscore	102246	7658 (1.80-1.76)
Ramachandran outliers	100387	7570 (1.80-1.76)
Sidechain outliers	100360	7569 (1.80-1.76)
RSRZ outliers	91569	6671 (1.80-1.76)

The table below summarises the geometric issues observed across the polymeric chains and their fit to the electron density. The red, orange, yellow and green segments on the lower bar indicate the fraction of residues that contain outliers for  $\geq 3$ , 2, 1 and 0 types of geometric quality criteria. A grey segment represents the fraction of residues that are not modelled. The numeric value for each fraction is indicated below the corresponding segment, with a dot representing fractions  $\leq 5\%$ . The upper red bar (where present) indicates the fraction of residues that have poor fit to the electron density. The numeric value is given above the bar.

Mol	Chain	Length	Quality of chain
1	L	114	<div> <div>3%</div> <div> <div></div> <div>74%</div> <div>18%</div> <div>• • •</div> </div> </div>
2	H	255	<div> <div>%</div> <div> <div></div> <div>82%</div> <div>13%</div> <div>• •</div> </div> </div>

The following table lists non-polymeric compounds, carbohydrate monomers and non-standard residues in protein, DNA, RNA chains that are outliers for geometric or electron-density-fit criteria:

Mol	Type	Chain	Res	Chirality	Geometry	Clashes	Electron density
3	CR9	H	256	X	-	-	-

## 2 Entry composition [i](#)

There are 4 unique types of molecules in this entry. The entry contains 6241 atoms, of which 3217 are hydrogens and 0 are deuteriums.

In the tables below, the ZeroOcc column contains the number of atoms modelled with zero occupancy, the AltConf column contains the number of residues with at least one atom in alternate conformation and the Trace column contains the number of residues modelled with at most 2 atoms.

- Molecule 1 is a protein called Serine protease hepsin.

Mol	Chain	Residues	Atoms						ZeroOcc	AltConf	Trace
			Total	C	H	N	O	S			
1	L	110	1718	530	862	161	156	9	0	4	0

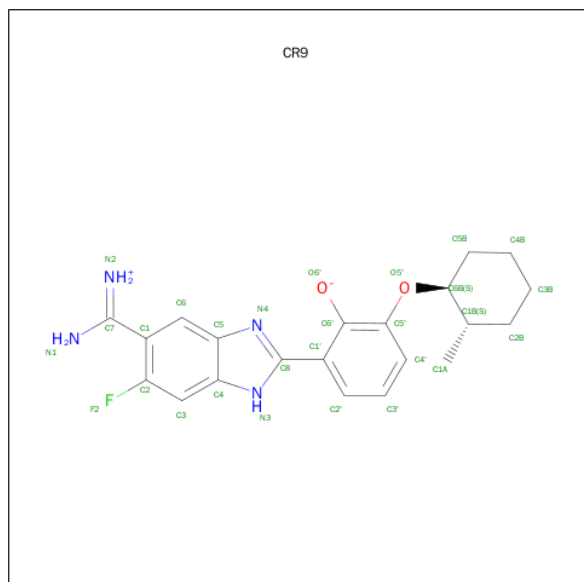
There is a discrepancy between the modelled and reference sequences:

Chain	Residue	Modelled	Actual	Comment	Reference
L	67	ALA	ASN	ENGINEERED	UNP P05981

- Molecule 2 is a protein called Serine protease hepsin.

Mol	Chain	Residues	Atoms						ZeroOcc	AltConf	Trace
			Total	C	H	N	O	S			
2	H	248	3773	1213	1866	334	348	12	0	8	0

- Molecule 3 is 2-{5-[AMINO(IMINIO)METHYL]-6-FLUORO-1H-BENZIMIDAZOL-2-YL}-6-[(2-METHYLCYCLOHEXYL)OXY]BENZENOLATE (three-letter code: CR9) (formula:  $C_{21}H_{23}FN_4O_2$ ).



Mol	Chain	Residues	Atoms						ZeroOcc	AltConf
3	H	1	Total	C	F	H	N	O	0	0
			51	21	1	23	4	2		

- Molecule 4 is water.

Mol	Chain	Residues	Atoms			ZeroOcc	AltConf
4	H	176	Total	H	O	0	1
			531	354	177		
4	L	55	Total	H	O	0	1
			168	112	56		

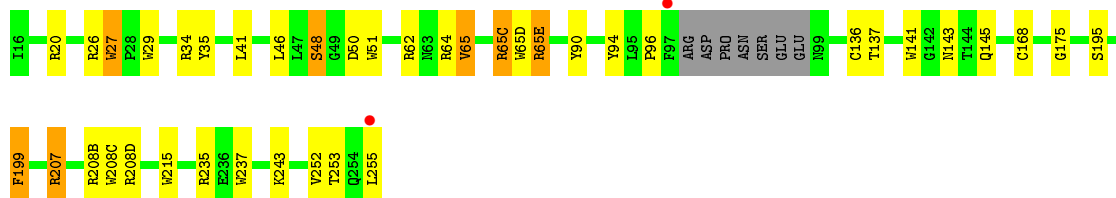
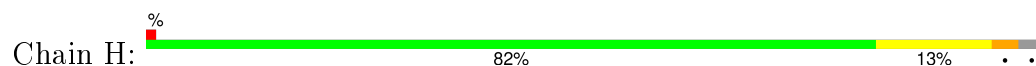
### 3 Residue-property plots [i](#)

These plots are drawn for all protein, RNA and DNA chains in the entry. The first graphic for a chain summarises the proportions of errors displayed in the second graphic. The second graphic shows the sequence view annotated by issues in geometry and electron density. Residues are color-coded according to the number of geometric quality criteria for which they contain at least one outlier: green = 0, yellow = 1, orange = 2 and red = 3 or more. A red dot above a residue indicates a poor fit to the electron density ( $RSRZ > 2$ ). Stretches of 2 or more consecutive residues without any outlier are shown as a green connector. Residues present in the sample, but not in the model, are shown in grey.

- Molecule 1: Serine protease hepsin



- Molecule 2: Serine protease hepsin



## 4 Data and refinement statistics

Property	Value	Source
Space group	P 1 21 1	Depositor
Cell constants a, b, c, $\alpha$ , $\beta$ , $\gamma$	59.02Å 47.95Å 63.38Å 90.00° 105.23° 90.00°	Depositor
Resolution (Å)	7.00 – 1.78 7.00 – 1.78	Depositor EDS
% Data completeness (in resolution range)	88.4 (7.00-1.78) 88.4 (7.00-1.78)	Depositor EDS
$R_{merge}$	0.06	Depositor
$R_{sym}$	(Not available)	Depositor
$\langle I/\sigma(I) \rangle$ <sup>1</sup>	0.50 (at 1.78Å)	Xtriage
Refinement program	X-PLOR 3.851	Depositor
R, $R_{free}$	0.193 , 0.231 0.191 , 0.194	Depositor DCC
$R_{free}$ test set	2910 reflections (11.29%)	DCC
Wilson B-factor (Å <sup>2</sup> )	23.1	Xtriage
Anisotropy	0.290	Xtriage
Bulk solvent $k_{sol}$ (e/Å <sup>3</sup> ), $B_{sol}$ (Å <sup>2</sup> )	0.32 , 75.2	EDS
Estimated twinning fraction	No twinning to report.	Xtriage
L-test for twinning <sup>2</sup>	$\langle  L  \rangle = 0.51$ , $\langle L^2 \rangle = 0.34$	Xtriage
Outliers	0 of 28688 reflections	Xtriage
$F_o, F_c$ correlation	0.97	EDS
Total number of atoms	6241	wwPDB-VP
Average B, all atoms (Å <sup>2</sup> )	28.0	wwPDB-VP

Xtriage's analysis on translational NCS is as follows: *The largest off-origin peak in the Patterson function is 10.27% of the height of the origin peak. No significant pseudotranslation is detected.*

<sup>1</sup>Intensities estimated from amplitudes.

<sup>2</sup>Theoretical values of  $\langle |L| \rangle$ ,  $\langle L^2 \rangle$  for acentric reflections are 0.5, 0.375 respectively for untwinned datasets, and 0.333, 0.2 for perfectly twinned datasets.

## 5 Model quality

### 5.1 Standard geometry

Bond lengths and bond angles in the following residue types are not validated in this section: CR9

The Z score for a bond length (or angle) is the number of standard deviations the observed value is removed from the expected value. A bond length (or angle) with  $|Z| > 5$  is considered an outlier worth inspection. RMSZ is the root-mean-square of all Z scores of the bond lengths (or angles).

Mol	Chain	Bond lengths		Bond angles	
		RMSZ	$\# Z  > 5$	RMSZ	$\# Z  > 5$
1	L	1.35	2/887 (0.2%)	1.48	10/1193 (0.8%)
2	H	1.38	1/1994 (0.1%)	1.63	43/2715 (1.6%)
All	All	1.37	3/2881 (0.1%)	1.59	53/3908 (1.4%)

Chiral center outliers are detected by calculating the chiral volume of a chiral center and verifying if the center is modelled as a planar moiety or with the opposite hand. A planarity outlier is detected by checking planarity of atoms in a peptide group, atoms in a mainchain group or atoms of a sidechain that are expected to be planar.

Mol	Chain	#Chirality outliers	#Planarity outliers
1	L	0	6
2	H	0	7
All	All	0	13

All (3) bond length outliers are listed below:

Mol	Chain	Res	Type	Atoms	Z	Observed(Å)	Ideal(Å)
1	L	28	TRP	CG-CD2	-5.37	1.34	1.43
2	H	48	SER	CA-CB	5.16	1.60	1.52
1	L	91	SER	CA-CB	5.00	1.60	1.52

All (53) bond angle outliers are listed below:

Mol	Chain	Res	Type	Atoms	Z	Observed(°)	Ideal(°)
2	H	27	TRP	CD1-NE1-CE2	10.83	118.75	109.00
2	H	29	TRP	CD1-NE1-CE2	10.10	118.09	109.00
2	H	65(D)	TRP	CD1-NE1-CE2	9.72	117.75	109.00
2	H	208(C)	TRP	CD1-NE1-CE2	9.69	117.72	109.00
2	H	215	TRP	CD1-NE1-CE2	9.62	117.66	109.00
2	H	51	TRP	CD1-NE1-CE2	9.43	117.48	109.00

*Continued on next page...*

*Continued from previous page...*

Mol	Chain	Res	Type	Atoms	Z	Observed(°)	Ideal(°)
2	H	65(E)	ARG	NE-CZ-NH2	-9.27	115.67	120.30
1	L	28	TRP	CD1-NE1-CE2	9.18	117.26	109.00
1	L	35	ARG	NE-CZ-NH2	-9.10	115.75	120.30
2	H	208(D)	ARG	NE-CZ-NH2	-9.03	115.79	120.30
2	H	237	TRP	CD1-NE1-CE2	8.81	116.93	109.00
2	H	29	TRP	NE1-CE2-CZ2	8.54	139.79	130.40
2	H	141	TRP	CD1-NE1-CE2	8.40	116.56	109.00
2	H	215	TRP	NE1-CE2-CZ2	8.34	139.57	130.40
2	H	208(C)	TRP	NE1-CE2-CZ2	7.86	139.04	130.40
2	H	27	TRP	CG-CD1-NE1	-7.83	102.27	110.10
1	L	28	TRP	NE1-CE2-CZ2	7.65	138.82	130.40
2	H	65(D)	TRP	CG-CD1-NE1	-7.45	102.65	110.10
2	H	51	TRP	CG-CD1-NE1	-7.43	102.67	110.10
2	H	29	TRP	CG-CD1-NE1	-7.42	102.68	110.10
2	H	237	TRP	NE1-CE2-CZ2	7.42	138.56	130.40
2	H	208(C)	TRP	CG-CD1-NE1	-7.25	102.85	110.10
2	H	235	ARG	NE-CZ-NH2	-7.16	116.72	120.30
2	H	208(B)	ARG	NE-CZ-NH2	-7.02	116.79	120.30
2	H	65(D)	TRP	NE1-CE2-CZ2	6.98	138.08	130.40
2	H	141	TRP	NE1-CE2-CZ2	6.93	138.02	130.40
2	H	26	ARG	NE-CZ-NH2	-6.80	116.90	120.30
2	H	29	TRP	NE1-CE2-CD2	-6.68	100.62	107.30
2	H	208(C)	TRP	NE1-CE2-CD2	-6.53	100.77	107.30
1	L	28	TRP	NE1-CE2-CD2	-6.50	100.80	107.30
2	H	215	TRP	CG-CD1-NE1	-6.50	103.60	110.10
2	H	27	TRP	NE1-CE2-CD2	-6.43	100.87	107.30
2	H	215	TRP	NE1-CE2-CD2	-6.42	100.88	107.30
2	H	27	TRP	NE1-CE2-CZ2	6.40	137.44	130.40
2	H	141	TRP	CG-CD1-NE1	-6.33	103.77	110.10
1	L	28	TRP	CG-CD1-NE1	-6.29	103.81	110.10
1	L	97	ARG	NE-CZ-NH2	-6.29	117.16	120.30
2	H	50	ASP	CB-CG-OD1	-6.26	112.67	118.30
1	L	5	PRO	CA-N-CD	-6.22	102.79	111.50
2	H	199	PHE	N-CA-C	-6.17	94.35	111.00
2	H	237	TRP	NE1-CE2-CD2	-6.13	101.17	107.30
2	H	65(D)	TRP	NE1-CE2-CD2	-5.99	101.31	107.30
2	H	207	ARG	NE-CZ-NH2	-5.95	117.33	120.30
2	H	237	TRP	CG-CD1-NE1	-5.82	104.28	110.10
2	H	141	TRP	NE1-CE2-CD2	-5.78	101.52	107.30
2	H	243	LYS	CA-CB-CG	-5.58	101.13	113.40
2	H	51	TRP	NE1-CE2-CZ2	5.40	136.34	130.40
1	L	25	GLU	OE1-CD-OE2	5.23	129.58	123.30

*Continued on next page...*

*Continued from previous page...*

Mol	Chain	Res	Type	Atoms	Z	Observed(°)	Ideal(°)
2	H	235	ARG	NE-CZ-NH1	5.20	122.90	120.30
2	H	65	VAL	N-CA-C	-5.20	96.96	111.00
1	L	99	ARG	NE-CZ-NH2	-5.14	117.73	120.30
1	L	19	MET	CG-SD-CE	-5.09	92.05	100.20
2	H	51	TRP	NE1-CE2-CD2	-5.07	102.23	107.30

There are no chirality outliers.

All (13) planarity outliers are listed below:

Mol	Chain	Res	Type	Group
2	H	20	ARG	Sidechain
2	H	207	ARG	Sidechain
2	H	34	ARG	Sidechain
2	H	62	ARG	Sidechain
2	H	64	ARG	Sidechain
2	H	65(C)	ARG	Sidechain
2	H	65(E)	ARG	Sidechain
1	L	17	ARG	Sidechain
1	L	29	ARG	Sidechain
1	L	39	ARG	Sidechain
1	L	62	ARG	Sidechain
1	L	85	ARG	Sidechain
1	L	97	ARG	Sidechain

## 5.2 Too-close contacts

In the following table, the Non-H and H(model) columns list the number of non-hydrogen atoms and hydrogen atoms in the chain respectively. The H(added) column lists the number of hydrogen atoms added and optimized by MolProbity. The Clashes column lists the number of clashes within the asymmetric unit, whereas Symm-Clashes lists symmetry related clashes.

Mol	Chain	Non-H	H(model)	H(added)	Clashes	Symm-Clashes
1	L	856	862	856	9	1
2	H	1907	1866	1842	14	0
3	H	28	23	23	4	0
4	H	177	354	0	0	1
4	L	56	112	0	0	0
All	All	3024	3217	2721	24	1

The all-atom clashscore is defined as the number of clashes found per 1000 atoms (including hydrogen atoms). The all-atom clashscore for this structure is 4.

All (24) close contacts within the same asymmetric unit are listed below, sorted by their clash magnitude.

Atom-1	Atom-2	Interatomic distance (Å)	Clash overlap (Å)
2:H:90:TYR:CZ	2:H:253:THR:HG22	2.35	0.61
2:H:41[A]:LEU:HD23	3:H:256:CR9:H4B	1.83	0.59
2:H:90:TYR:CE2	2:H:253:THR:HG22	2.37	0.59
2:H:195:SER:HG	3:H:256:CR9:HN3	1.52	0.56
1:L:73:PHE:HB3	1:L:90:ILE:HG12	1.88	0.55
2:H:46[A]:LEU:HG	2:H:48:SER:O	2.11	0.50
2:H:35:TYR:CE1	2:H:65(C):ARG:HB2	2.47	0.49
1:L:31:LEU:HD21	1:L:90:ILE:HD11	1.95	0.47
2:H:65:VAL:HB	2:H:65(C):ARG:HD3	1.96	0.47
2:H:94:TYR:CE2	2:H:96:PRO:HB2	2.49	0.46
2:H:136:CYS:HB2	2:H:199:PHE:CZ	2.49	0.46
1:L:30:LEU:CD1	1:L:69:THR:HG21	2.45	0.46
1:L:30:LEU:HD13	1:L:69:THR:HG21	1.98	0.45
2:H:90:TYR:CZ	2:H:253:THR:CG2	3.00	0.45
3:H:256:CR9:H1AA	3:H:256:CR9:HC4'	1.99	0.45
1:L:87:LEU:HD12	1:L:87:LEU:N	2.32	0.44
2:H:143:ASN:HB3	2:H:145:GLN:O	2.17	0.44
1:L:36[B]:SER:OG	1:L:77:GLU:HG2	2.18	0.44
2:H:145:GLN:HA	2:H:145:GLN:OE1	2.19	0.43
1:L:83:THR:CG2	1:L:88:GLU:CG	2.96	0.43
2:H:27:TRP:CZ2	2:H:137:THR:HG21	2.54	0.42
1:L:17:ARG:HA	1:L:102:ALA:HA	2.02	0.42
2:H:195:SER:OG	3:H:256:CR9:N3	2.41	0.41
1:L:90:ILE:HG21	1:L:90:ILE:HD13	1.86	0.40

All (1) symmetry-related close contacts are listed below. The label for Atom-2 includes the symmetry operator and encoded unit-cell translations to be applied.

Atom-1	Atom-2	Interatomic distance (Å)	Clash overlap (Å)
1:L:91:SER:OG	4:H:432:HOH:H1[1_455]	1.59	0.01

## 5.3 Torsion angles

### 5.3.1 Protein backbone

In the following table, the Percentiles column shows the percent Ramachandran outliers of the chain as a percentile score with respect to all X-ray entries followed by that with respect to entries of similar resolution.

The Analysed column shows the number of residues for which the backbone conformation was analysed, and the total number of residues.

Mol	Chain	Analysed	Favoured	Allowed	Outliers	Percentiles	
1	L	112/114 (98%)	108 (96%)	4 (4%)	0	100	100
2	H	252/255 (99%)	245 (97%)	6 (2%)	1 (0%)	39	22
All	All	364/369 (99%)	353 (97%)	10 (3%)	1 (0%)	46	28

All (1) Ramachandran outliers are listed below:

Mol	Chain	Res	Type
2	H	175	GLY

### 5.3.2 Protein sidechains ⓘ

In the following table, the Percentiles column shows the percent sidechain outliers of the chain as a percentile score with respect to all X-ray entries followed by that with respect to entries of similar resolution.

The Analysed column shows the number of residues for which the sidechain conformation was analysed, and the total number of residues.

Mol	Chain	Analysed	Rotameric	Outliers	Percentiles	
1	L	95/95 (100%)	88 (93%)	7 (7%)	17	4
2	H	204/203 (100%)	201 (98%)	3 (2%)	72	60
All	All	299/298 (100%)	289 (97%)	10 (3%)	47	25

All (10) residues with a non-rotameric sidechain are listed below:

Mol	Chain	Res	Type
1	L	30	LEU
1	L	39	ARG
1	L	79[A]	ARG
1	L	79[B]	ARG
1	L	80	LEU
1	L	83	THR
1	L	91	SER
2	H	168	CYS
2	H	252	VAL
2	H	255	LEU

Some sidechains can be flipped to improve hydrogen bonding and reduce clashes. All (2) such

sidechains are listed below:

Mol	Chain	Res	Type
2	H	192	GLN
2	H	240	GLN

### 5.3.3 RNA ⓘ

There are no RNA molecules in this entry.

## 5.4 Non-standard residues in protein, DNA, RNA chains ⓘ

There are no non-standard protein/DNA/RNA residues in this entry.

## 5.5 Carbohydrates ⓘ

There are no carbohydrates in this entry.

## 5.6 Ligand geometry ⓘ

1 ligand is modelled in this entry.

In the following table, the Counts columns list the number of bonds (or angles) for which Mogul statistics could be retrieved, the number of bonds (or angles) that are observed in the model and the number of bonds (or angles) that are defined in the chemical component dictionary. The Link column lists molecule types, if any, to which the group is linked. The Z score for a bond length (or angle) is the number of standard deviations the observed value is removed from the expected value. A bond length (or angle) with  $|Z| > 2$  is considered an outlier worth inspection. RMSZ is the root-mean-square of all Z scores of the bond lengths (or angles).

Mol	Type	Chain	Res	Link	Bond lengths			Bond angles		
					Counts	RMSZ	$\# Z  > 2$	Counts	RMSZ	$\# Z  > 2$
3	CR9	H	256	2	30,31,31	1.98	11 (36%)	36,45,45	2.08	11 (30%)

In the following table, the Chirals column lists the number of chiral outliers, the number of chiral centers analysed, the number of these observed in the model and the number defined in the chemical component dictionary. Similar counts are reported in the Torsion and Rings columns. '-' means no outliers of that kind were identified.

Mol	Type	Chain	Res	Link	Chirals	Torsions	Rings
3	CR9	H	256	2	1/1/3/3	0/9/23/23	0/4/4/4

All (11) bond length outliers are listed below:

Mol	Chain	Res	Type	Atoms	Z	Observed(Å)	Ideal(Å)
3	H	256	CR9	C5'-C6'	-3.33	1.39	1.43
3	H	256	CR9	C6-C5	-2.98	1.37	1.41
3	H	256	CR9	C1-C7	-2.83	1.42	1.48
3	H	256	CR9	C1'-C8	-2.70	1.41	1.48
3	H	256	CR9	C5-N4	-2.01	1.32	1.39
3	H	256	CR9	C8-N3	-2.00	1.30	1.34
3	H	256	CR9	C1B-C6B	2.32	1.59	1.53
3	H	256	CR9	O6'-C6'	2.39	1.37	1.27
3	H	256	CR9	C6-C1	3.06	1.41	1.37
3	H	256	CR9	C3-C2	3.74	1.39	1.35
3	H	256	CR9	C1-C2	4.87	1.45	1.38

All (11) bond angle outliers are listed below:

Mol	Chain	Res	Type	Atoms	Z	Observed(°)	Ideal(°)
3	H	256	CR9	O6'-C6'-C5'	-5.16	116.95	121.36
3	H	256	CR9	C4'-C5'-C6'	-4.84	119.03	121.10
3	H	256	CR9	C1-C6-C5	-4.15	117.91	121.52
3	H	256	CR9	F2-C2-C3	-3.50	115.08	119.74
3	H	256	CR9	N1-C7-N2	-2.97	117.25	120.47
3	H	256	CR9	C8-N4-C5	-2.69	98.74	103.89
3	H	256	CR9	C2-C3-C4	-2.22	115.57	118.47
3	H	256	CR9	C6-C5-N4	-2.11	124.44	130.70
3	H	256	CR9	O5'-C5'-C6'	2.11	116.99	113.63
3	H	256	CR9	C4-C5-N4	2.19	112.81	108.20
3	H	256	CR9	C3-C4-C5	3.79	124.14	120.55

All (1) chirality outliers are listed below:

Mol	Chain	Res	Type	Atom
3	H	256	CR9	C1B

There are no torsion outliers.

There are no ring outliers.

1 monomer is involved in 4 short contacts:

Mol	Chain	Res	Type	Clashes	Symm-Clashes
3	H	256	CR9	4	0

## 5.7 Other polymers

There are no such residues in this entry.

## 5.8 Polymer linkage issues

There are no chain breaks in this entry.

## 6 Fit of model and data [i](#)

### 6.1 Protein, DNA and RNA chains [i](#)

In the following table, the column labelled ‘#RSRZ> 2’ contains the number (and percentage) of RSRZ outliers, followed by percent RSRZ outliers for the chain as percentile scores relative to all X-ray entries and entries of similar resolution. The OWAB column contains the minimum, median, 95<sup>th</sup> percentile and maximum values of the occupancy-weighted average B-factor per residue. The column labelled ‘Q< 0.9’ lists the number of (and percentage) of residues with an average occupancy less than 0.9.

Mol	Chain	Analysed	<RSRZ>	#RSRZ>2	OWAB(Å <sup>2</sup> )	Q<0.9
1	L	110/114 (96%)	0.01	3 (2%) 58 56	16, 27, 41, 57	15 (13%)
2	H	248/255 (97%)	-0.16	2 (0%) 87 87	12, 23, 37, 46	23 (9%)
All	All	358/369 (97%)	-0.11	5 (1%) 78 77	12, 24, 40, 57	38 (10%)

All (5) RSRZ outliers are listed below:

Mol	Chain	Res	Type	RSRZ
2	H	255	LEU	4.7
1	L	83	THR	3.0
2	H	97	PHE	2.5
1	L	81	PRO	2.4
1	L	84	GLN	2.3

### 6.2 Non-standard residues in protein, DNA, RNA chains [i](#)

There are no non-standard protein/DNA/RNA residues in this entry.

### 6.3 Carbohydrates [i](#)

There are no carbohydrates in this entry.

### 6.4 Ligands [i](#)

In the following table, the Atoms column lists the number of modelled atoms in the group and the number defined in the chemical component dictionary. LLDF column lists the quality of electron density of the group with respect to its neighbouring residues in protein, DNA or RNA chains. The B-factors column lists the minimum, median, 95<sup>th</sup> percentile and maximum values of B factors of atoms in the group. The column labelled ‘Q< 0.9’ lists the number of atoms with occupancy less than 0.9.

Mol	Type	Chain	Res	Atoms	RSCC	RSR	LLDF	B-factors( $\text{\AA}^2$ )	Q<0.9
3	CR9	H	256	28/28	0.93	0.11	1.80	20,36,47,48	0

## 6.5 Other polymers [i](#)

There are no such residues in this entry.