



# Full wwPDB X-ray Structure Validation Report ⓘ

Feb 1, 2016 – 07:12 PM GMT

PDB ID : 4O5T  
Title : Crystal structure of Diels-Alderase CE20 in complex with a product analog  
Authors : Beck, T.; Preiswerk, N.; Mayer, C.; Hilvert, D.  
Deposited on : 2013-12-20  
Resolution : 2.90 Å(reported)

This is a Full wwPDB X-ray Structure Validation Report for a publicly released PDB entry.  
We welcome your comments at [validation@mail.wwpdb.org](mailto:validation@mail.wwpdb.org)  
A user guide is available at  
<http://wwpdb.org/validation/2016/XrayValidationReportHelp>  
with specific help available everywhere you see the ⓘ symbol.

---

The following versions of software and data (see [references ⓘ](#)) were used in the production of this report:

MolProbity : 4.02b-467  
Mogul : 1.7 (RC4), CSD as536be (2015)  
Xtriage (Phenix) : 1.9-1692  
EDS : rb-20026688  
Percentile statistics : 20151230.v01 (using entries in the PDB archive December 30th 2015)  
Refmac : 5.8.0135  
CCP4 : 6.5.0  
Ideal geometry (proteins) : Engh & Huber (2001)  
Ideal geometry (DNA, RNA) : Parkinson et al. (1996)  
Validation Pipeline (wwPDB-VP) : trunk26865

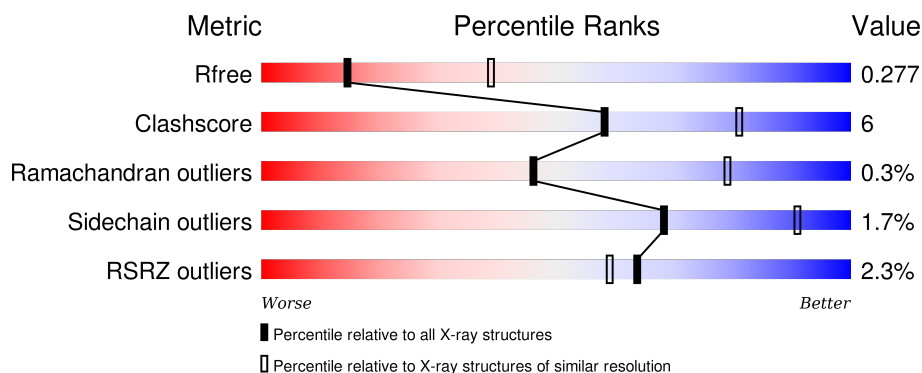
# 1 Overall quality at a glance

The following experimental techniques were used to determine the structure:

## *X-RAY DIFFRACTION*

The reported resolution of this entry is 2.90 Å.

Percentile scores (ranging between 0-100) for global validation metrics of the entry are shown in the following graphic. The table shows the number of entries on which the scores are based.



Metric	Whole archive (#Entries)	Similar resolution (#Entries, resolution range(Å))
$R_{free}$	91344	1451 (2.90-2.90)
Clashscore	102246	1668 (2.90-2.90)
Ramachandran outliers	100387	1630 (2.90-2.90)
Sidechain outliers	100360	1632 (2.90-2.90)
RSRZ outliers	91569	1456 (2.90-2.90)

The table below summarises the geometric issues observed across the polymeric chains and their fit to the electron density. The red, orange, yellow and green segments on the lower bar indicate the fraction of residues that contain outliers for  $\geq 3$ , 2, 1 and 0 types of geometric quality criteria. A grey segment represents the fraction of residues that are not modelled. The numeric value for each fraction is indicated below the corresponding segment, with a dot representing fractions  $\leq 5\%$ . The upper red bar (where present) indicates the fraction of residues that have poor fit to the electron density. The numeric value is given above the bar.

Mol	Chain	Length	Quality of chain
1	A	337	 3% 88% 6% • 5%
1	B	337	 % 87% 9% • •

The following table lists non-polymeric compounds, carbohydrate monomers and non-standard residues in protein, DNA, RNA chains that are outliers for geometric or electron-density-fit criteria:

Mol	Type	Chain	Res	Chirality	Geometry	Clashes	Electron density
2	XDA	A	400	-	-	-	X
2	XDA	B	400	-	-	-	X

## 2 Entry composition [i](#)

There are 3 unique types of molecules in this entry. The entry contains 9279 atoms, of which 4451 are hydrogens and 0 are deuteriums.

In the tables below, the ZeroOcc column contains the number of atoms modelled with zero occupancy, the AltConf column contains the number of residues with at least one atom in alternate conformation and the Trace column contains the number of residues modelled with at most 2 atoms.

- Molecule 1 is a protein called Diisopropyl-fluorophosphatase.

Mol	Chain	Residues	Atoms						ZeroOcc	AltConf	Trace
1	A	319	Total	C	H	N	O	S	0	4	0
			4581	1510	2211	402	441	17			
1	B	326	Total	C	H	N	O	S	0	0	0
			4557	1516	2188	400	436	17			

There are 116 discrepancies between the modelled and reference sequences:

Chain	Residue	Modelled	Actual	Comment	Reference
A	13	MET	VAL	ENGINEERED MUTATION	UNP Q7SIG4
A	21	THR	GLU	ENGINEERED MUTATION	UNP Q7SIG4
A	33	VAL	ILE	ENGINEERED MUTATION	UNP Q7SIG4
A	36	SER	PRO	SEE REMARK 999	UNP Q7SIG4
A	37	PRO	GLU	SEE REMARK 999	UNP Q7SIG4
A	38	LEU	VAL	SEE REMARK 999	UNP Q7SIG4
A	39	SER	GLU	SEE REMARK 999	UNP Q7SIG4
A	40	GLU	VAL	SEE REMARK 999	UNP Q7SIG4
A	41	ALA	ASN	SEE REMARK 999	UNP Q7SIG4
A	42	LEU	GLY	SEE REMARK 999	UNP Q7SIG4
A	43	ILE	LYS	SEE REMARK 999	UNP Q7SIG4
A	44	ASN	PRO	SEE REMARK 999	UNP Q7SIG4
A	45	ALA	ALA	SEE REMARK 999	UNP Q7SIG4
A	46	ASN	-	SEE REMARK 999	UNP Q7SIG4
A	47	SER	-	SEE REMARK 999	UNP Q7SIG4
A	48	LEU	-	SEE REMARK 999	UNP Q7SIG4
A	49	ALA	-	SEE REMARK 999	UNP Q7SIG4
A	50	GLU	-	SEE REMARK 999	UNP Q7SIG4
A	51	ALA	-	SEE REMARK 999	UNP Q7SIG4
A	52	TYR	-	SEE REMARK 999	UNP Q7SIG4
A	53	GLU	-	SEE REMARK 999	UNP Q7SIG4
A	54	ALA	-	SEE REMARK 999	UNP Q7SIG4
A	55	ARG	-	SEE REMARK 999	UNP Q7SIG4
A	56	SER	-	SEE REMARK 999	UNP Q7SIG4
A	57	ASP	-	SEE REMARK 999	UNP Q7SIG4

*Continued on next page...*

*Continued from previous page...*

Chain	Residue	Modelled	Actual	Comment	Reference
A	58	ALA	-	SEE REMARK 999	UNP Q7SIG4
A	63	HIS	ARG	ENGINEERED MUTATION	UNP Q7SIG4
A	85	SER	ILE	ENGINEERED MUTATION	UNP Q7SIG4
A	87	ILE	ALA	ENGINEERED MUTATION	UNP Q7SIG4
A	121	ASN	LYS	ENGINEERED MUTATION	UNP Q7SIG4
A	128	CYS	ARG	ENGINEERED MUTATION	UNP Q7SIG4
A	133	ALA	ASN	ENGINEERED MUTATION	UNP Q7SIG4
A	134	TYR	ASP	ENGINEERED MUTATION	UNP Q7SIG4
A	151	GLY	GLU	ENGINEERED MUTATION	UNP Q7SIG4
A	157	PHE	TYR	ENGINEERED MUTATION	UNP Q7SIG4
A	159	ILE	ARG	ENGINEERED MUTATION	UNP Q7SIG4
A	161	LEU	MET	ENGINEERED MUTATION	UNP Q7SIG4
A	162	ARG	GLN	ENGINEERED MUTATION	UNP Q7SIG4
A	186	CYS	PHE	ENGINEERED MUTATION	UNP Q7SIG4
A	188	ALA	ASN	ENGINEERED MUTATION	UNP Q7SIG4
A	208	GLN	THR	ENGINEERED MUTATION	UNP Q7SIG4
A	223	ASN	LYS	ENGINEERED MUTATION	UNP Q7SIG4
A	238	LYS	GLU	ENGINEERED MUTATION	UNP Q7SIG4
A	242	ALA	ASP	ENGINEERED MUTATION	UNP Q7SIG4
A	245	VAL	ASP	ENGINEERED MUTATION	UNP Q7SIG4
A	284	ALA	SER	ENGINEERED MUTATION	UNP Q7SIG4
A	301	ASP	GLU	ENGINEERED MUTATION	UNP Q7SIG4
A	322	SER	LEU	ENGINEERED MUTATION	UNP Q7SIG4
A	328	GLY	-	EXPRESSION TAG	UNP Q7SIG4
A	329	SER	-	EXPRESSION TAG	UNP Q7SIG4
A	330	LEU	-	EXPRESSION TAG	UNP Q7SIG4
A	331	GLU	-	EXPRESSION TAG	UNP Q7SIG4
A	332	HIS	-	EXPRESSION TAG	UNP Q7SIG4
A	333	HIS	-	EXPRESSION TAG	UNP Q7SIG4
A	334	HIS	-	EXPRESSION TAG	UNP Q7SIG4
A	335	HIS	-	EXPRESSION TAG	UNP Q7SIG4
A	336	HIS	-	EXPRESSION TAG	UNP Q7SIG4
A	337	HIS	-	EXPRESSION TAG	UNP Q7SIG4
B	13	MET	VAL	ENGINEERED MUTATION	UNP Q7SIG4
B	21	THR	GLU	ENGINEERED MUTATION	UNP Q7SIG4
B	33	VAL	ILE	ENGINEERED MUTATION	UNP Q7SIG4
B	36	SER	PRO	SEE REMARK 999	UNP Q7SIG4
B	37	PRO	GLU	SEE REMARK 999	UNP Q7SIG4
B	38	LEU	VAL	SEE REMARK 999	UNP Q7SIG4
B	39	SER	GLU	SEE REMARK 999	UNP Q7SIG4
B	40	GLU	VAL	SEE REMARK 999	UNP Q7SIG4
B	41	ALA	ASN	SEE REMARK 999	UNP Q7SIG4

*Continued on next page...*

*Continued from previous page...*

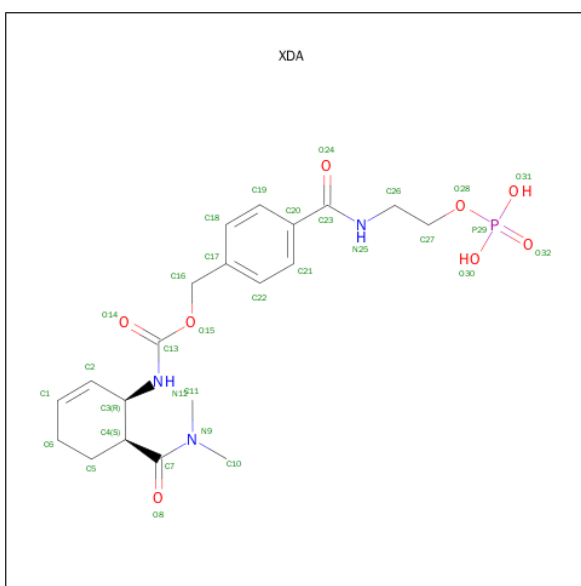
Chain	Residue	Modelled	Actual	Comment	Reference
B	42	LEU	GLY	SEE REMARK 999	UNP Q7SIG4
B	43	ILE	LYS	SEE REMARK 999	UNP Q7SIG4
B	44	ASN	PRO	SEE REMARK 999	UNP Q7SIG4
B	45	ALA	ALA	SEE REMARK 999	UNP Q7SIG4
B	46	ASN	-	SEE REMARK 999	UNP Q7SIG4
B	47	SER	-	SEE REMARK 999	UNP Q7SIG4
B	48	LEU	-	SEE REMARK 999	UNP Q7SIG4
B	49	ALA	-	SEE REMARK 999	UNP Q7SIG4
B	50	GLU	-	SEE REMARK 999	UNP Q7SIG4
B	51	ALA	-	SEE REMARK 999	UNP Q7SIG4
B	52	TYR	-	SEE REMARK 999	UNP Q7SIG4
B	53	GLU	-	SEE REMARK 999	UNP Q7SIG4
B	54	ALA	-	SEE REMARK 999	UNP Q7SIG4
B	55	ARG	-	SEE REMARK 999	UNP Q7SIG4
B	56	SER	-	SEE REMARK 999	UNP Q7SIG4
B	57	ASP	-	SEE REMARK 999	UNP Q7SIG4
B	58	ALA	-	SEE REMARK 999	UNP Q7SIG4
B	63	HIS	ARG	ENGINEERED MUTATION	UNP Q7SIG4
B	85	SER	ILE	ENGINEERED MUTATION	UNP Q7SIG4
B	87	ILE	ALA	ENGINEERED MUTATION	UNP Q7SIG4
B	121	ASN	LYS	ENGINEERED MUTATION	UNP Q7SIG4
B	128	CYS	ARG	ENGINEERED MUTATION	UNP Q7SIG4
B	133	ALA	ASN	ENGINEERED MUTATION	UNP Q7SIG4
B	134	TYR	ASP	ENGINEERED MUTATION	UNP Q7SIG4
B	151	GLY	GLU	ENGINEERED MUTATION	UNP Q7SIG4
B	157	PHE	TYR	ENGINEERED MUTATION	UNP Q7SIG4
B	159	ILE	ARG	ENGINEERED MUTATION	UNP Q7SIG4
B	161	LEU	MET	ENGINEERED MUTATION	UNP Q7SIG4
B	162	ARG	GLN	ENGINEERED MUTATION	UNP Q7SIG4
B	186	CYS	PHE	ENGINEERED MUTATION	UNP Q7SIG4
B	188	ALA	ASN	ENGINEERED MUTATION	UNP Q7SIG4
B	208	GLN	THR	ENGINEERED MUTATION	UNP Q7SIG4
B	223	ASN	LYS	ENGINEERED MUTATION	UNP Q7SIG4
B	238	LYS	GLU	ENGINEERED MUTATION	UNP Q7SIG4
B	242	ALA	ASP	ENGINEERED MUTATION	UNP Q7SIG4
B	245	VAL	ASP	ENGINEERED MUTATION	UNP Q7SIG4
B	284	ALA	SER	ENGINEERED MUTATION	UNP Q7SIG4
B	301	ASP	GLU	ENGINEERED MUTATION	UNP Q7SIG4
B	322	SER	LEU	ENGINEERED MUTATION	UNP Q7SIG4
B	328	GLY	-	EXPRESSION TAG	UNP Q7SIG4
B	329	SER	-	EXPRESSION TAG	UNP Q7SIG4
B	330	LEU	-	EXPRESSION TAG	UNP Q7SIG4

*Continued on next page...*

Continued from previous page...

Chain	Residue	Modelled	Actual	Comment	Reference
B	331	GLU	-	EXPRESSION TAG	UNP Q7SIG4
B	332	HIS	-	EXPRESSION TAG	UNP Q7SIG4
B	333	HIS	-	EXPRESSION TAG	UNP Q7SIG4
B	334	HIS	-	EXPRESSION TAG	UNP Q7SIG4
B	335	HIS	-	EXPRESSION TAG	UNP Q7SIG4
B	336	HIS	-	EXPRESSION TAG	UNP Q7SIG4
B	337	HIS	-	EXPRESSION TAG	UNP Q7SIG4

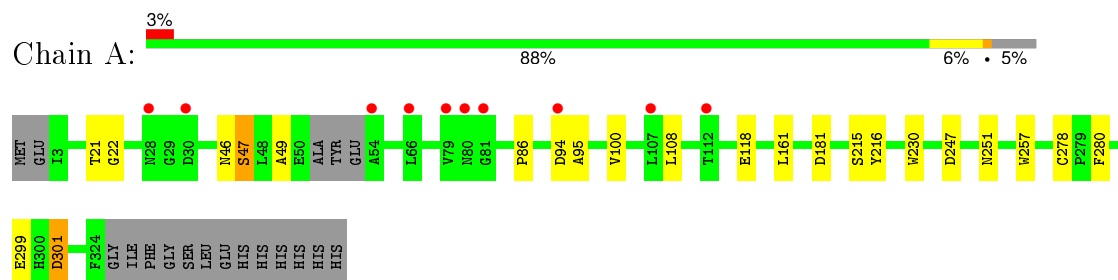
- Molecule 2 is 4-{[2-(PHOSPHONOOXY)ETHYL]CARBAMOYL}BENZYL [(1R,6S)-6-(DIMETHYLCARBAMOYL)CYCLOHEX-2-EN-1-YL]CARBAMATE (three-letter code: XDA) (formula: C<sub>20</sub>H<sub>28</sub>N<sub>3</sub>O<sub>8</sub>P).



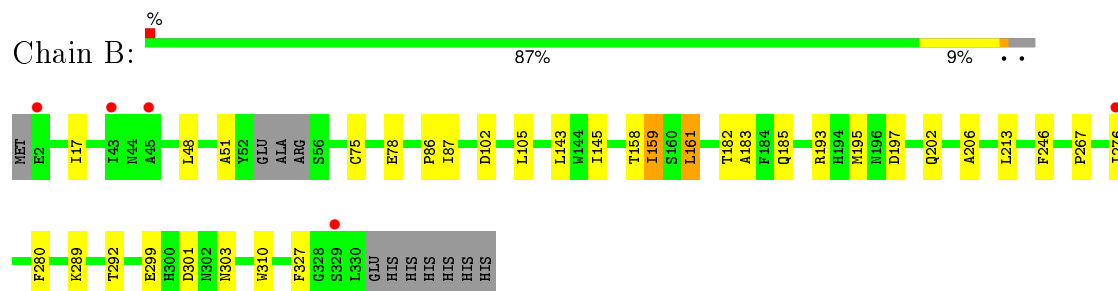
### 3 Residue-property plots [i](#)

These plots are drawn for all protein, RNA and DNA chains in the entry. The first graphic for a chain summarises the proportions of errors displayed in the second graphic. The second graphic shows the sequence view annotated by issues in geometry and electron density. Residues are color-coded according to the number of geometric quality criteria for which they contain at least one outlier: green = 0, yellow = 1, orange = 2 and red = 3 or more. A red dot above a residue indicates a poor fit to the electron density ( $RSRZ > 2$ ). Stretches of 2 or more consecutive residues without any outlier are shown as a green connector. Residues present in the sample, but not in the model, are shown in grey.

#### • Molecule 1: Diisopropyl-fluorophosphatase



#### • Molecule 1: Diisopropyl-fluorophosphatase





## 4 Data and refinement statistics

Property	Value	Source
Space group	C 2 2 21	Depositor
Cell constants a, b, c, $\alpha$ , $\beta$ , $\gamma$	88.65Å 128.94Å 106.53Å 90.00° 90.00° 90.00°	Depositor
Resolution (Å)	43.08 – 2.90 43.04 – 2.90	Depositor EDS
% Data completeness (in resolution range)	97.0 (43.08-2.90) 97.0 (43.04-2.90)	Depositor EDS
$R_{merge}$	0.11	Depositor
$R_{sym}$	(Not available)	Depositor
$\langle I/\sigma(I) \rangle$ <sup>1</sup>	1.50 (at 2.90Å)	Xtriage
Refinement program	REFMAC 5.7.0032	Depositor
R, $R_{free}$	0.228 , 0.288 0.227 , 0.277	Depositor DCC
$R_{free}$ test set	669 reflections (5.22%)	DCC
Wilson B-factor (Å <sup>2</sup> )	78.2	Xtriage
Anisotropy	0.521	Xtriage
Bulk solvent $k_{sol}$ (e/Å <sup>3</sup> ), $B_{sol}$ (Å <sup>2</sup> )	0.37 , 60.7	EDS
Estimated twinning fraction	No twinning to report.	Xtriage
L-test for twinning <sup>2</sup>	$\langle  L  \rangle = 0.49$ , $\langle L^2 \rangle = 0.32$	Xtriage
Outliers	0 of 13465 reflections	Xtriage
$F_o, F_c$ correlation	0.93	EDS
Total number of atoms	9279	wwPDB-VP
Average B, all atoms (Å <sup>2</sup> )	77.0	wwPDB-VP

Xtriage's analysis on translational NCS is as follows: *The largest off-origin peak in the Patterson function is 5.84% of the height of the origin peak. No significant pseudotranslation is detected.*

<sup>1</sup>Intensities estimated from amplitudes.

<sup>2</sup>Theoretical values of  $\langle |L| \rangle$ ,  $\langle L^2 \rangle$  for acentric reflections are 0.5, 0.375 respectively for untwinned datasets, and 0.333, 0.2 for perfectly twinned datasets.

## 5 Model quality [i](#)

### 5.1 Standard geometry [i](#)

Bond lengths and bond angles in the following residue types are not validated in this section: XDA

The Z score for a bond length (or angle) is the number of standard deviations the observed value is removed from the expected value. A bond length (or angle) with  $|Z| > 5$  is considered an outlier worth inspection. RMSZ is the root-mean-square of all Z scores of the bond lengths (or angles).

Mol	Chain	Bond lengths		Bond angles	
		RMSZ	$\# Z  > 5$	RMSZ	$\# Z  > 5$
1	A	0.49	0/2439	0.65	0/3324
1	B	0.50	0/2431	0.66	0/3316
All	All	0.50	0/4870	0.66	0/6640

There are no bond length outliers.

There are no bond angle outliers.

There are no chirality outliers.

There are no planarity outliers.

### 5.2 Too-close contacts [i](#)

In the following table, the Non-H and H(model) columns list the number of non-hydrogen atoms and hydrogen atoms in the chain respectively. The H(added) column lists the number of hydrogen atoms added and optimized by MolProbity. The Clashes column lists the number of clashes within the asymmetric unit, whereas Symm-Clashes lists symmetry related clashes.

Mol	Chain	Non-H	H(model)	H(added)	Clashes	Symm-Clashes
1	A	2370	2211	2202	16	0
1	B	2369	2188	2188	21	1
2	A	32	26	28	4	0
2	B	32	26	28	15	0
3	A	15	0	0	0	0
3	B	10	0	0	0	0
All	All	4828	4451	4446	55	1

The all-atom clashscore is defined as the number of clashes found per 1000 atoms (including hydrogen atoms). The all-atom clashscore for this structure is 6.

All (55) close contacts within the same asymmetric unit are listed below, sorted by their clash

magnitude.

Atom-1	Atom-2	Interatomic distance (Å)	Clash overlap (Å)
2:B:400:XDA:H10B	2:B:400:XDA:C13	1.54	1.36
2:B:400:XDA:C13	2:B:400:XDA:C10	2.27	1.13
2:B:400:XDA:H10B	2:B:400:XDA:O14	1.48	1.11
2:B:400:XDA:H10B	2:B:400:XDA:N12	1.67	1.09
2:B:400:XDA:H10B	2:B:400:XDA:C3	1.83	1.04
2:B:400:XDA:H3	2:B:400:XDA:H10B	1.51	0.93
2:A:400:XDA:H10B	2:A:400:XDA:C13	1.98	0.93
2:B:400:XDA:C3	2:B:400:XDA:C10	2.48	0.91
2:B:400:XDA:N12	2:B:400:XDA:C10	2.37	0.87
1:B:299:GLU:OE2	1:B:301:ASP:HB2	1.77	0.85
2:B:400:XDA:O14	2:B:400:XDA:C10	2.22	0.80
1:A:94[A]:ASP:O	1:A:95[A]:ALA:CB	2.35	0.75
1:A:94[A]:ASP:O	1:A:95[A]:ALA:HB3	1.88	0.74
2:A:400:XDA:H10B	2:A:400:XDA:O14	1.89	0.71
1:A:280:PHE:CG	1:A:299:GLU:HG3	2.28	0.69
2:B:400:XDA:H3	2:B:400:XDA:C10	2.16	0.69
1:B:86:PRO:O	1:B:87:ILE:HD12	1.94	0.67
2:B:400:XDA:H26B	2:B:400:XDA:C19	2.22	0.67
2:B:400:XDA:N12	2:B:400:XDA:N9	2.42	0.65
1:B:193:ARG:NH1	1:B:267:PRO:O	2.32	0.63
1:A:299:GLU:OE2	1:A:301:ASP:HB2	1.99	0.62
1:A:46:ASN:O	1:A:47:SER:CB	2.48	0.62
1:A:280:PHE:CD1	1:A:299:GLU:HG3	2.35	0.61
1:B:48:LEU:O	1:B:51:ALA:N	2.34	0.60
1:B:280:PHE:CG	1:B:299:GLU:HG3	2.37	0.59
1:B:299:GLU:OE2	1:B:301:ASP:CB	2.49	0.58
1:B:86:PRO:C	1:B:87:ILE:HD12	2.25	0.57
2:B:400:XDA:C26	2:B:400:XDA:C19	2.86	0.53
1:B:143:LEU:HD23	1:B:145:ILE:HD11	1.91	0.51
2:B:400:XDA:C26	2:B:400:XDA:H19	2.41	0.50
1:A:94[B]:ASP:N	1:A:94[B]:ASP:OD1	2.39	0.50
1:A:299:GLU:OE2	1:A:301:ASP:CB	2.59	0.50
1:A:108:LEU:HD23	1:A:118:GLU:HA	1.93	0.49
1:B:161:LEU:O	1:B:185:GLN:NE2	2.44	0.49
1:A:257:TRP:CD1	2:A:400:XDA:H11B	2.48	0.49
1:B:182:THR:OG1	1:B:183:ALA:N	2.45	0.47
1:B:206:ALA:HA	1:B:213:LEU:HD23	1.97	0.47
2:B:400:XDA:H26B	2:B:400:XDA:H19	1.94	0.46
1:A:215:SER:HB3	1:A:230:TRP:HB2	1.97	0.46
1:A:86:PRO:HB3	1:A:100:VAL:CG1	2.46	0.46
1:B:193:ARG:HB3	1:B:202:GLN:HB3	1.98	0.46

*Continued on next page...*

Continued from previous page...

Atom-1	Atom-2	Interatomic distance (Å)	Clash overlap (Å)
2:A:400:XDA:C13	2:A:400:XDA:C10	2.85	0.44
1:B:289:LYS:O	1:B:292:THR:OG1	2.32	0.44
1:B:280:PHE:CD2	1:B:299:GLU:HG3	2.53	0.43
1:B:193:ARG:HH21	1:B:246:PHE:HE1	1.65	0.43
1:A:247:ASP:OD1	1:A:251:ASN:N	2.50	0.43
1:B:276:ILE:HD11	1:B:310:TRP:CZ3	2.53	0.43
1:B:195:MET:HB2	1:B:197:ASP:OD1	2.18	0.43
1:A:181:ASP:OD2	1:A:216:TYR:OH	2.29	0.42
1:A:21:THR:OG1	1:A:22:GLY:N	2.51	0.42
1:B:17:ILE:O	1:B:303:ASN:HB3	2.19	0.41
1:B:299:GLU:OE2	1:B:301:ASP:N	2.50	0.41
1:A:278:CYS:HB3	1:A:280:PHE:CE1	2.56	0.40
1:B:159:ILE:HG23	1:B:161:LEU:HB2	2.02	0.40
1:B:102:ASP:OD1	1:B:105:LEU:N	2.53	0.40

All (1) symmetry-related close contacts are listed below. The label for Atom-2 includes the symmetry operator and encoded unit-cell translations to be applied.

Atom-1	Atom-2	Interatomic distance (Å)	Clash overlap (Å)
1:B:197:ASP:OD2	1:B:197:ASP:OD2[3_554]	2.13	0.07

## 5.3 Torsion angles

### 5.3.1 Protein backbone

In the following table, the Percentiles column shows the percent Ramachandran outliers of the chain as a percentile score with respect to all X-ray entries followed by that with respect to entries of similar resolution.

The Analysed column shows the number of residues for which the backbone conformation was analysed, and the total number of residues.

Mol	Chain	Analysed	Favoured	Allowed	Outliers	Percentiles	
1	A	319/337 (95%)	302 (95%)	15 (5%)	2 (1%)	30	67
1	B	322/337 (96%)	306 (95%)	16 (5%)	0	100	100
All	All	641/674 (95%)	608 (95%)	31 (5%)	2 (0%)	46	79

All (2) Ramachandran outliers are listed below:

Mol	Chain	Res	Type
1	A	47	SER
1	A	49	ALA

### 5.3.2 Protein sidechains ⓘ

In the following table, the Percentiles column shows the percent sidechain outliers of the chain as a percentile score with respect to all X-ray entries followed by that with respect to entries of similar resolution.

The Analysed column shows the number of residues for which the sidechain conformation was analysed, and the total number of residues.

Mol	Chain	Analysed	Rotameric	Outliers	Percentiles	
1	A	234/277 (84%)	232 (99%)	2 (1%)	84	96
1	B	228/277 (82%)	222 (97%)	6 (3%)	54	85
All	All	462/554 (83%)	454 (98%)	8 (2%)	68	91

All (8) residues with a non-rotameric sidechain are listed below:

Mol	Chain	Res	Type
1	A	161	LEU
1	A	301	ASP
1	B	75	CYS
1	B	78	GLU
1	B	158	THR
1	B	159	ILE
1	B	161	LEU
1	B	327	PHE

Some sidechains can be flipped to improve hydrogen bonding and reduce clashes. There are no such sidechains identified.

### 5.3.3 RNA ⓘ

There are no RNA molecules in this entry.

## 5.4 Non-standard residues in protein, DNA, RNA chains ⓘ

There are no non-standard protein/DNA/RNA residues in this entry.

## 5.5 Carbohydrates [i](#)

There are no carbohydrates in this entry.

## 5.6 Ligand geometry [i](#)

2 ligands are modelled in this entry.

In the following table, the Counts columns list the number of bonds (or angles) for which Mogul statistics could be retrieved, the number of bonds (or angles) that are observed in the model and the number of bonds (or angles) that are defined in the chemical component dictionary. The Link column lists molecule types, if any, to which the group is linked. The Z score for a bond length (or angle) is the number of standard deviations the observed value is removed from the expected value. A bond length (or angle) with  $|Z| > 2$  is considered an outlier worth inspection. RMSZ is the root-mean-square of all Z scores of the bond lengths (or angles).

Mol	Type	Chain	Res	Link	Bond lengths			Bond angles		
					Counts	RMSZ	$\# Z  > 2$	Counts	RMSZ	$\# Z  > 2$
2	XDA	A	400	-	33,33,33	1.10	1 (3%)	38,45,45	1.69	7 (18%)
2	XDA	B	400	-	33,33,33	1.09	1 (3%)	38,45,45	1.37	5 (13%)

In the following table, the Chirals column lists the number of chiral outliers, the number of chiral centers analysed, the number of these observed in the model and the number defined in the chemical component dictionary. Similar counts are reported in the Torsion and Rings columns. '-' means no outliers of that kind were identified.

Mol	Type	Chain	Res	Link	Chirals	Torsions	Rings
2	XDA	A	400	-	-	0/29/40/40	0/2/2/2
2	XDA	B	400	-	-	0/29/40/40	0/2/2/2

All (2) bond length outliers are listed below:

Mol	Chain	Res	Type	Atoms	Z	Observed(Å)	Ideal(Å)
2	B	400	XDA	O15-C13	5.34	1.46	1.35
2	A	400	XDA	O15-C13	5.61	1.46	1.35

All (12) bond angle outliers are listed below:

Mol	Chain	Res	Type	Atoms	Z	Observed(°)	Ideal(°)
2	A	400	XDA	O24-C23-C20	-3.07	115.72	120.97
2	B	400	XDA	O15-C13-O14	-2.86	118.34	124.22
2	A	400	XDA	C6-C1-C2	-2.84	118.68	123.65
2	A	400	XDA	O15-C13-O14	-2.26	119.57	124.22
2	B	400	XDA	O30-P29-O31	2.00	115.01	107.38

*Continued on next page...*

*Continued from previous page...*

Mol	Chain	Res	Type	Atoms	Z	Observed(°)	Ideal(°)
2	B	400	XDA	C20-C23-N25	2.12	121.87	117.12
2	A	400	XDA	C16-O15-C13	2.86	122.73	115.91
2	A	400	XDA	O15-C13-N12	3.02	117.24	110.54
2	B	400	XDA	C5-C4-C3	3.13	113.28	109.63
2	A	400	XDA	C20-C23-N25	3.57	125.14	117.12
2	B	400	XDA	O15-C13-N12	4.07	119.56	110.54
2	A	400	XDA	C5-C4-C3	4.24	114.58	109.63

There are no chirality outliers.

There are no torsion outliers.

There are no ring outliers.

2 monomers are involved in 19 short contacts:

Mol	Chain	Res	Type	Clashes	Symm-Clashes
2	A	400	XDA	4	0
2	B	400	XDA	15	0

## 5.7 Other polymers [i](#)

There are no such residues in this entry.

## 5.8 Polymer linkage issues [i](#)

There are no chain breaks in this entry.

## 6 Fit of model and data [i](#)

### 6.1 Protein, DNA and RNA chains [i](#)

In the following table, the column labelled ‘#RSRZ> 2’ contains the number (and percentage) of RSRZ outliers, followed by percent RSRZ outliers for the chain as percentile scores relative to all X-ray entries and entries of similar resolution. The OWAB column contains the minimum, median, 95<sup>th</sup> percentile and maximum values of the occupancy-weighted average B-factor per residue. The column labelled ‘Q< 0.9’ lists the number of (and percentage) of residues with an average occupancy less than 0.9.

Mol	Chain	Analysed	<RSRZ>	#RSRZ>2	OWAB(Å <sup>2</sup> )	Q<0.9
1	A	319/337 (94%)	0.22	10 (3%) 52 45	51, 76, 107, 131	0
1	B	326/337 (96%)	0.22	5 (1%) 76 74	49, 76, 101, 123	0
All	All	645/674 (95%)	0.22	15 (2%) 64 59	49, 76, 104, 131	0

All (15) RSRZ outliers are listed below:

Mol	Chain	Res	Type	RSRZ
1	B	2	GLU	4.4
1	A	80	ASN	4.2
1	A	66	LEU	2.8
1	B	43	ILE	2.5
1	A	81	GLY	2.5
1	A	28	ASN	2.4
1	B	45	ALA	2.4
1	A	112	THR	2.2
1	B	276	ILE	2.2
1	A	107	LEU	2.1
1	A	94[A]	ASP	2.1
1	B	329	SER	2.1
1	A	79	VAL	2.1
1	A	54	ALA	2.1
1	A	30	ASP	2.1

### 6.2 Non-standard residues in protein, DNA, RNA chains [i](#)

There are no non-standard protein/DNA/RNA residues in this entry.

### 6.3 Carbohydrates [i](#)

There are no carbohydrates in this entry.



## 6.4 Ligands [i](#)

In the following table, the Atoms column lists the number of modelled atoms in the group and the number defined in the chemical component dictionary. LLDF column lists the quality of electron density of the group with respect to its neighbouring residues in protein, DNA or RNA chains. The B-factors column lists the minimum, median, 95<sup>th</sup> percentile and maximum values of B factors of atoms in the group. The column labelled 'Q< 0.9' lists the number of atoms with occupancy less than 0.9.

Mol	Type	Chain	Res	Atoms	RSCC	RSR	LLDF	B-factors( $\text{\AA}^2$ )	Q<0.9
2	XDA	B	400	32/32	0.78	0.40	2.56	48,54,65,65	58
2	XDA	A	400	32/32	0.88	0.32	2.08	57,61,64,65	58

## 6.5 Other polymers [i](#)

There are no such residues in this entry.