



Full wwPDB X-ray Structure Validation Report ⓘ

Feb 1, 2016 – 04:49 AM GMT

PDB ID : 2OAG
Title : Crystal structure of human dipeptidyl peptidase IV (DPPIV) with pyrrolidine-constrained phenethylamine 29g
Authors : Backes, B.J.; Longenecker, K.L.; Hamilton, G.L.; Stewart, K.D.; Lai, C.; Kopecka, H.
Deposited on : 2006-12-15
Resolution : 2.30 Å(reported)

This is a Full wwPDB X-ray Structure Validation Report for a publicly released PDB entry.
We welcome your comments at validation@mail.wwpdb.org
A user guide is available at
<http://wwpdb.org/validation/2016/XrayValidationReportHelp>
with specific help available everywhere you see the ⓘ symbol.

The following versions of software and data (see [references ⓘ](#)) were used in the production of this report:

MolProbity : 4.02b-467
Mogul : 1.7 (RC4), CSD as536be (2015)
Xtriage (Phenix) : 1.9-1692
EDS : rb-20026688
Percentile statistics : 20151230.v01 (using entries in the PDB archive December 30th 2015)
Refmac : 5.8.0135
CCP4 : 6.5.0
Ideal geometry (proteins) : Engh & Huber (2001)
Ideal geometry (DNA, RNA) : Parkinson et al. (1996)
Validation Pipeline (wwPDB-VP) : trunk26865

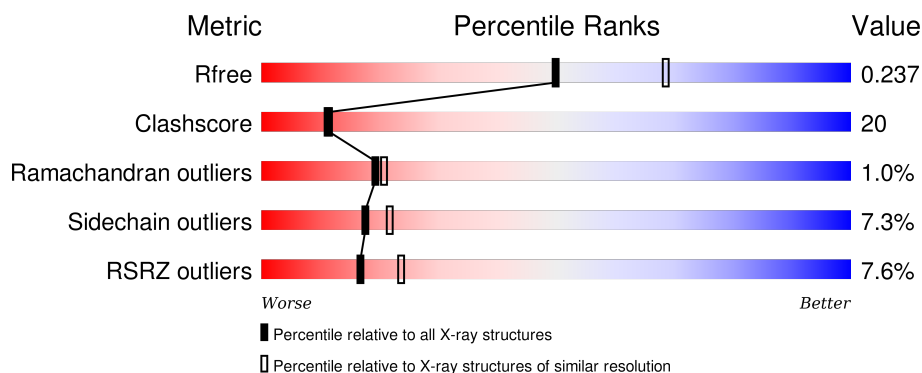
1 Overall quality at a glance

The following experimental techniques were used to determine the structure:

X-RAY DIFFRACTION

The reported resolution of this entry is 2.30 Å.

Percentile scores (ranging between 0-100) for global validation metrics of the entry are shown in the following graphic. The table shows the number of entries on which the scores are based.



Metric	Whole archive (#Entries)	Similar resolution (#Entries, resolution range(Å))
R_{free}	91344	3852 (2.30-2.30)
Clashscore	102246	4452 (2.30-2.30)
Ramachandran outliers	100387	4410 (2.30-2.30)
Sidechain outliers	100360	4409 (2.30-2.30)
RSRZ outliers	91569	3857 (2.30-2.30)

The table below summarises the geometric issues observed across the polymeric chains and their fit to the electron density. The red, orange, yellow and green segments on the lower bar indicate the fraction of residues that contain outliers for ≥ 3 , 2, 1 and 0 types of geometric quality criteria. A grey segment represents the fraction of residues that are not modelled. The numeric value for each fraction is indicated below the corresponding segment, with a dot representing fractions $\leq 5\%$. The upper red bar (where present) indicates the fraction of residues that have poor fit to the electron density. The numeric value is given above the bar.

Mol	Chain	Length	Quality of chain
1	A	726	<div> <div>4%</div> <div>67% 29% 5%</div> </div>
1	B	726	<div> <div>10%</div> <div>68% 27% 5%</div> </div>
1	C	726	<div> <div>9%</div> <div>64% 32% .</div> </div>
1	D	726	<div> <div>8%</div> <div>64% 32% 5%</div> </div>

The following table lists non-polymeric compounds, carbohydrate monomers and non-standard

residues in protein, DNA, RNA chains that are outliers for geometric or electron-density-fit criteria:

Mol	Type	Chain	Res	Chirality	Geometry	Clashes	Electron density
2	DLI	B	4000	-	-	-	X

2 Entry composition [i](#)

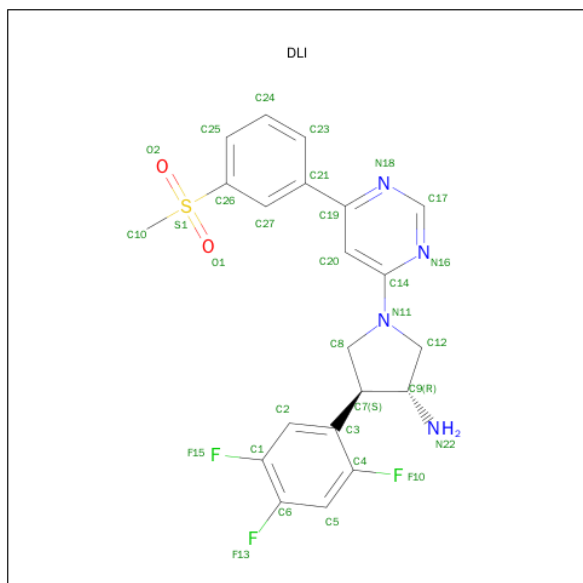
There are 3 unique types of molecules in this entry. The entry contains 27142 atoms, of which 0 are hydrogens and 0 are deuteriums.

In the tables below, the ZeroOcc column contains the number of atoms modelled with zero occupancy, the AltConf column contains the number of residues with at least one atom in alternate conformation and the Trace column contains the number of residues modelled with at most 2 atoms.

- Molecule 1 is a protein called Dipeptidyl peptidase 4.

Mol	Chain	Residues	Atoms					ZeroOcc	AltConf	Trace
1	A	726	Total	C	N	O	S	0	0	0
			5949	3816	980	1127	26			
1	B	726	Total	C	N	O	S	0	0	0
			5949	3816	980	1127	26			
1	C	726	Total	C	N	O	S	0	0	0
			5949	3816	980	1127	26			
1	D	726	Total	C	N	O	S	0	0	0
			5949	3816	980	1127	26			

- Molecule 2 is (3R,4S)-1-{6-[3-(METHYLSULFONYL)PHENYL]PYRIMIDIN-4-YL}-4-(2,4,5-TRIFLUOROPHENYL)PYRROLIDIN-3-AMINE (three-letter code: DLI) (formula: $C_{21}H_{19}F_3N_4O_2S$).



Mol	Chain	Residues	Atoms					ZeroOcc	AltConf
2	B	1	Total	C	F	N	O S	0	0
			31	21	3	4	2 1		

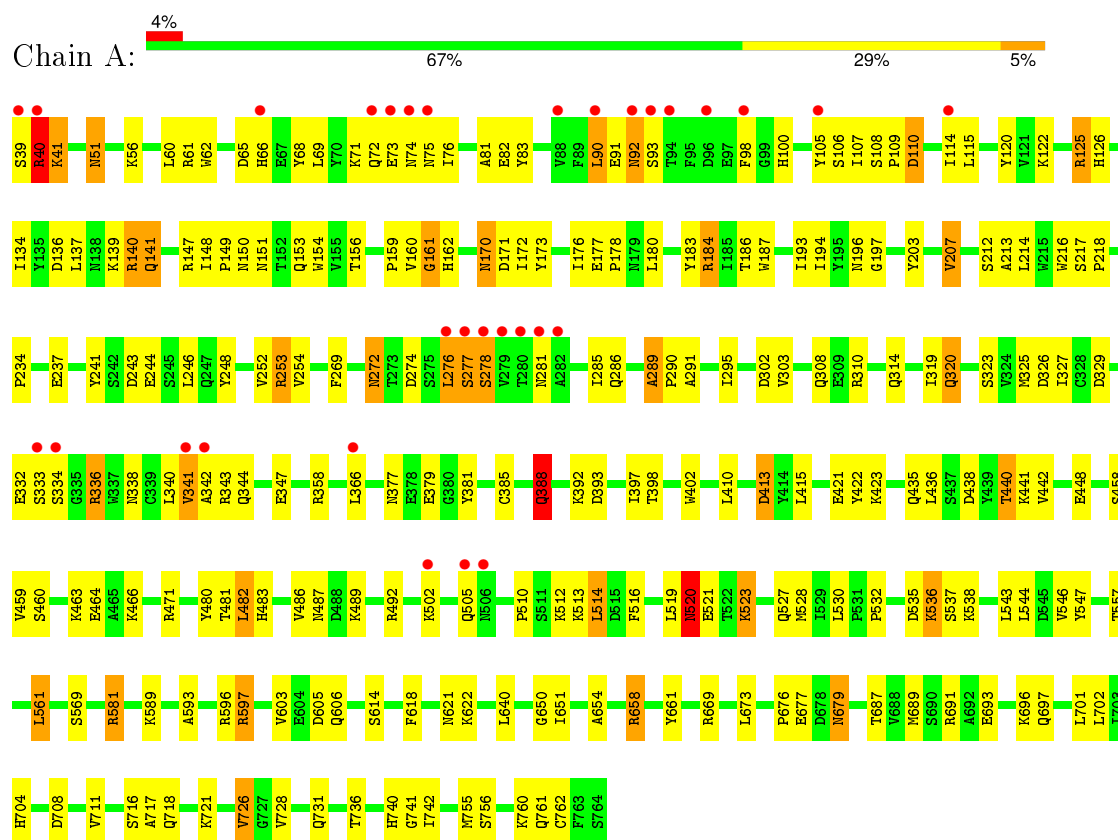
- Molecule 3 is water.

Mol	Chain	Residues	Atoms		ZeroOcc	AltConf
3	A	946	Total 946	O 946	0	0
3	B	844	Total 844	O 844	0	0
3	C	768	Total 768	O 768	0	0
3	D	757	Total 757	O 757	0	0

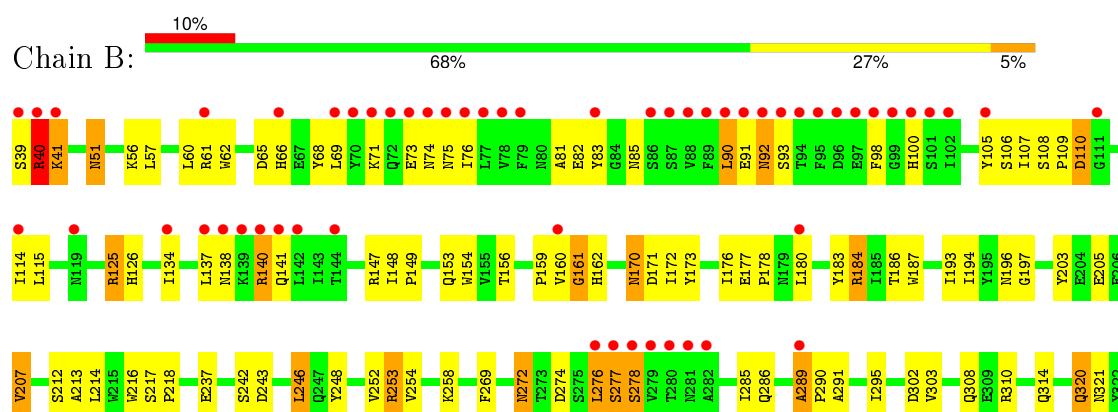
3 Residue-property plots [i](#)

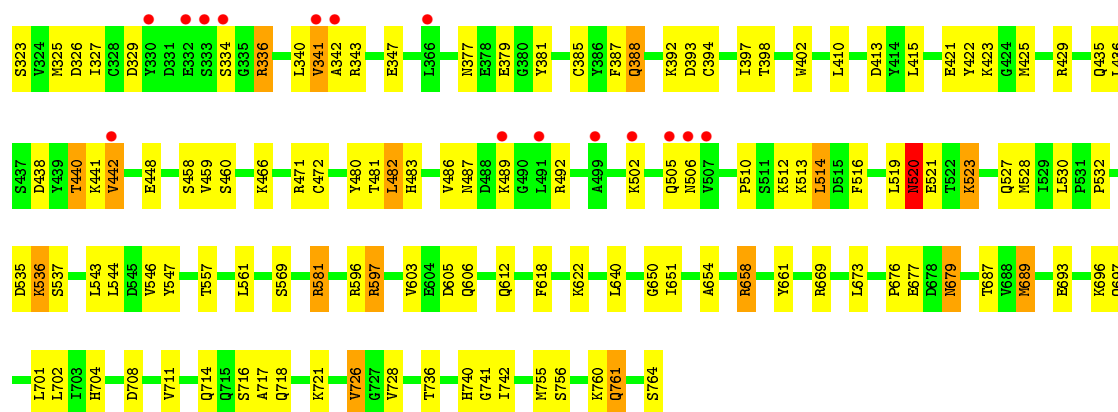
These plots are drawn for all protein, RNA and DNA chains in the entry. The first graphic for a chain summarises the proportions of errors displayed in the second graphic. The second graphic shows the sequence view annotated by issues in geometry and electron density. Residues are color-coded according to the number of geometric quality criteria for which they contain at least one outlier: green = 0, yellow = 1, orange = 2 and red = 3 or more. A red dot above a residue indicates a poor fit to the electron density ($RSRZ > 2$). Stretches of 2 or more consecutive residues without any outlier are shown as a green connector. Residues present in the sample, but not in the model, are shown in grey.

• Molecule 1: Dipeptidyl peptidase 4

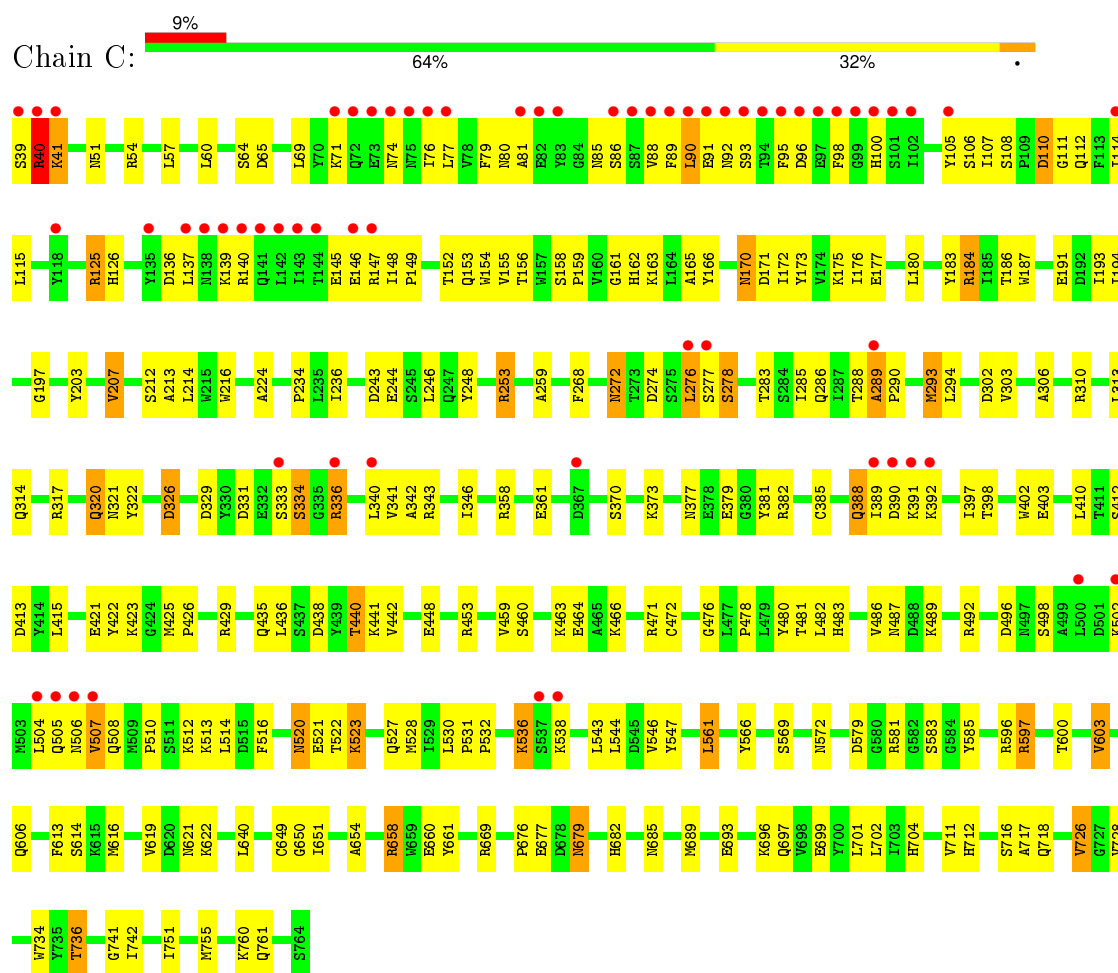


• Molecule 1: Dipeptidyl peptidase 4

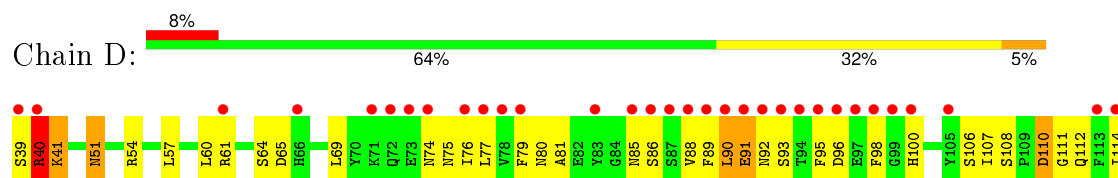


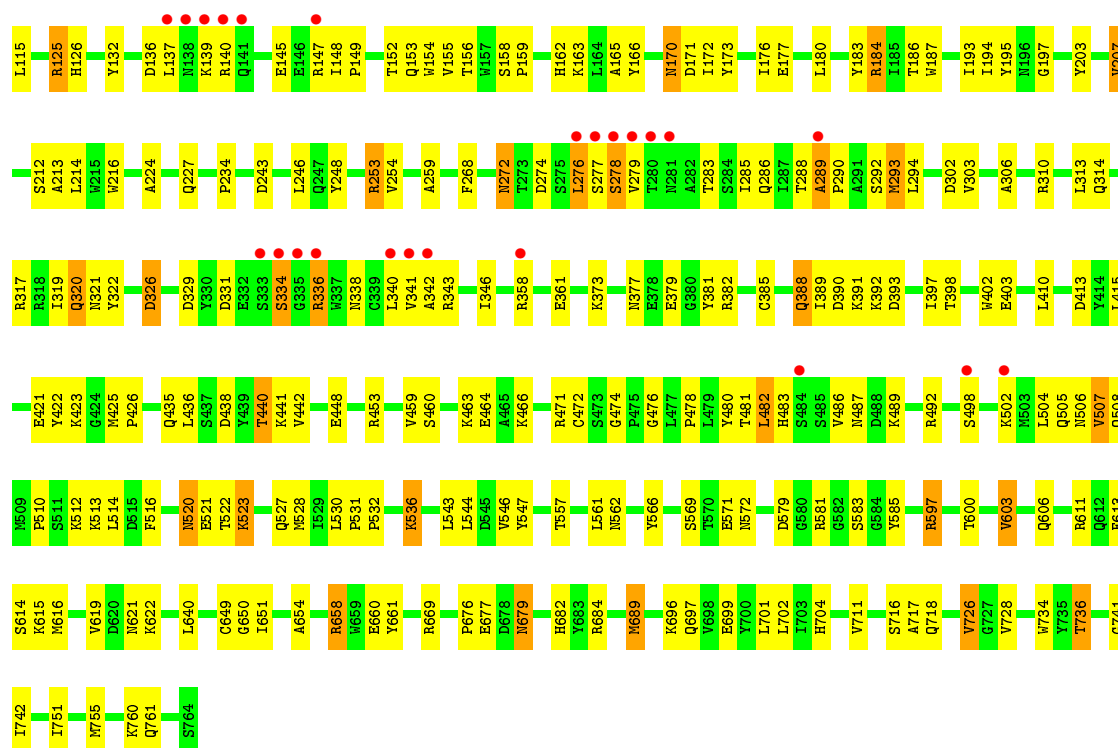


• Molecule 1: Dipeptidyl peptidase 4



• Molecule 1: Dipeptidyl peptidase 4





4 Data and refinement statistics

Property	Value	Source
Space group	P 1 21 1	Depositor
Cell constants a, b, c, α , β , γ	120.01Å 126.22Å 127.56Å 90.00° 96.51° 90.00°	Depositor
Resolution (Å)	50.00 – 2.30 49.26 – 2.30	Depositor EDS
% Data completeness (in resolution range)	97.5 (50.00-2.30) 97.5 (49.26-2.30)	Depositor EDS
R_{merge}	0.11	Depositor
R_{sym}	(Not available)	Depositor
$\langle I/\sigma(I) \rangle$ ¹	2.12 (at 2.29Å)	Xtriage
Refinement program	CNS	Depositor
R, R_{free}	0.197 , 0.240 0.196 , 0.237	Depositor DCC
R_{free} test set	8153 reflections (5.26%)	DCC
Wilson B-factor (Å ²)	32.3	Xtriage
Anisotropy	0.285	Xtriage
Bulk solvent k_{sol} (e/Å ³), B_{sol} (Å ²)	0.32 , 67.3	EDS
Estimated twinning fraction	No twinning to report.	Xtriage
L-test for twinning ²	$\langle L \rangle = 0.49$, $\langle L^2 \rangle = 0.32$	Xtriage
Outliers	0 of 163215 reflections	Xtriage
F_o, F_c correlation	0.95	EDS
Total number of atoms	27142	wwPDB-VP
Average B, all atoms (Å ²)	39.0	wwPDB-VP

Xtriage's analysis on translational NCS is as follows: *The largest off-origin peak in the Patterson function is 2.57% of the height of the origin peak. No significant pseudotranslation is detected.*

¹Intensities estimated from amplitudes.

²Theoretical values of $\langle |L| \rangle$, $\langle L^2 \rangle$ for acentric reflections are 0.5, 0.375 respectively for untwinned datasets, and 0.333, 0.2 for perfectly twinned datasets.

5 Model quality [i](#)

5.1 Standard geometry [i](#)

Bond lengths and bond angles in the following residue types are not validated in this section: DLI

The Z score for a bond length (or angle) is the number of standard deviations the observed value is removed from the expected value. A bond length (or angle) with $|Z| > 5$ is considered an outlier worth inspection. RMSZ is the root-mean-square of all Z scores of the bond lengths (or angles).

Mol	Chain	Bond lengths		Bond angles	
		RMSZ	# Z >5	RMSZ	# Z >5
1	A	0.31	0/6120	0.64	2/8321 (0.0%)
1	B	0.30	0/6120	0.64	2/8321 (0.0%)
1	C	0.29	0/6120	0.61	0/8321
1	D	0.29	0/6120	0.61	0/8321
All	All	0.30	0/24480	0.62	4/33284 (0.0%)

There are no bond length outliers.

All (4) bond angle outliers are listed below:

Mol	Chain	Res	Type	Atoms	Z	Observed(°)	Ideal(°)
1	A	341	VAL	N-CA-C	-5.53	96.08	111.00
1	B	341	VAL	N-CA-C	-5.38	96.49	111.00
1	A	388	GLN	N-CA-C	-5.21	96.92	111.00
1	B	388	GLN	N-CA-C	-5.05	97.35	111.00

There are no chirality outliers.

There are no planarity outliers.

5.2 Too-close contacts [i](#)

In the following table, the Non-H and H(model) columns list the number of non-hydrogen atoms and hydrogen atoms in the chain respectively. The H(added) column lists the number of hydrogen atoms added and optimized by MolProbity. The Clashes column lists the number of clashes within the asymmetric unit, whereas Symm-Clashes lists symmetry related clashes.

Mol	Chain	Non-H	H(model)	H(added)	Clashes	Symm-Clashes
1	A	5949	0	5667	251	0
1	B	5949	0	5667	227	0
1	C	5949	0	5667	246	0

Continued on next page...

Continued from previous page...

Mol	Chain	Non-H	H(model)	H(added)	Clashes	Symm-Clashes
1	D	5949	0	5667	250	0
2	B	31	0	19	1	0
3	A	946	0	0	54	0
3	B	844	0	0	31	0
3	C	768	0	0	44	0
3	D	757	0	0	42	0
All	All	27142	0	22687	953	0

The all-atom clashscore is defined as the number of clashes found per 1000 atoms (including hydrogen atoms). The all-atom clashscore for this structure is 20.

All (953) close contacts within the same asymmetric unit are listed below, sorted by their clash magnitude.

Atom-1	Atom-2	Interatomic distance (Å)	Clash overlap (Å)
1:C:289:ALA:HB1	1:C:290:PRO:HA	1.36	1.06
1:B:334:SER:HB3	1:B:336:ARG:HE	1.16	1.06
1:D:289:ALA:HB1	1:D:290:PRO:HA	1.35	1.04
1:A:334:SER:HB3	1:A:336:ARG:HE	1.18	1.03
1:A:289:ALA:HB1	1:A:290:PRO:HA	1.42	1.01
1:D:621:ASN:HB3	3:D:843:HOH:O	1.62	0.99
1:B:289:ALA:HB1	1:B:290:PRO:HA	1.42	0.96
1:A:736:THR:HG22	3:B:4007:HOH:O	1.67	0.94
1:A:289:ALA:HB1	1:A:290:PRO:CA	1.99	0.92
1:B:334:SER:HB3	1:B:336:ARG:NE	1.85	0.90
1:A:334:SER:HB3	1:A:336:ARG:NE	1.87	0.90
1:B:289:ALA:HB1	1:B:290:PRO:CA	2.01	0.90
1:B:172:ILE:H	1:B:186:THR:HG22	1.38	0.88
1:D:176:ILE:HD11	1:D:276:LEU:HD21	1.54	0.88
1:C:176:ILE:HD11	1:C:276:LEU:HD21	1.54	0.88
1:C:76:ILE:HD12	1:C:90:LEU:HD11	1.56	0.88
1:C:253:ARG:HH22	1:D:253:ARG:HH22	1.20	0.87
1:D:76:ILE:HD12	1:D:90:LEU:HD11	1.57	0.87
1:A:172:ILE:H	1:A:186:THR:HG22	1.39	0.87
1:C:172:ILE:H	1:C:186:THR:HG22	1.38	0.86
1:D:614:SER:HB2	3:D:843:HOH:O	1.76	0.85
1:D:334:SER:HB3	1:D:336:ARG:HE	1.41	0.84
1:A:338:ASN:HB3	3:A:1471:HOH:O	1.76	0.84
1:C:621:ASN:HB3	3:C:1173:HOH:O	1.77	0.84
1:D:289:ALA:HB1	1:D:290:PRO:CA	2.07	0.84
1:C:726:VAL:HG12	1:C:728:VAL:HG23	1.60	0.84
1:A:253:ARG:HH22	1:B:253:ARG:HH22	1.24	0.83

Continued on next page...

Continued from previous page...

Atom-1	Atom-2	Interatomic distance (Å)	Clash overlap (Å)
1:A:276:LEU:HB3	3:A:1446:HOH:O	1.79	0.83
1:D:276:LEU:HD22	1:D:276:LEU:H	1.41	0.83
1:A:281:ASN:HB2	3:A:1217:HOH:O	1.78	0.83
1:C:276:LEU:HD22	1:C:276:LEU:H	1.42	0.83
1:D:172:ILE:H	1:D:186:THR:HG22	1.40	0.83
1:C:334:SER:HB3	1:C:336:ARG:HE	1.41	0.83
1:A:487:ASN:HB2	3:A:907:HOH:O	1.79	0.82
3:A:776:HOH:O	1:B:736:THR:HG22	1.78	0.82
1:C:289:ALA:HB1	1:C:290:PRO:CA	2.08	0.82
1:D:726:VAL:HG12	1:D:728:VAL:HG23	1.59	0.82
1:A:76:ILE:HD12	1:A:90:LEU:HD11	1.61	0.82
1:B:76:ILE:HD12	1:B:90:LEU:HD11	1.62	0.81
1:A:341:VAL:O	1:A:342:ALA:HB3	1.80	0.80
1:A:140:ARG:HG2	1:A:140:ARG:HH11	1.45	0.80
1:B:140:ARG:HG2	1:B:140:ARG:HH11	1.46	0.80
1:C:528:MET:HE3	1:C:530:LEU:HD21	1.63	0.80
1:A:691:ARG:NH1	3:A:1584:HOH:O	2.14	0.80
1:A:762:CYS:HB2	3:A:1267:HOH:O	1.83	0.79
1:C:272:ASN:HD22	1:C:274:ASP:H	1.31	0.79
1:D:334:SER:HB3	1:D:336:ARG:NE	1.98	0.78
1:A:726:VAL:HG12	1:A:728:VAL:HG23	1.66	0.78
1:C:334:SER:HB3	1:C:336:ARG:NE	1.99	0.78
1:B:489:LYS:NZ	1:B:489:LYS:HB3	1.99	0.78
1:A:489:LYS:HB3	1:A:489:LYS:NZ	1.99	0.78
1:A:51:ASN:HB2	3:A:1110:HOH:O	1.84	0.77
1:A:39:SER:HB2	1:A:40:ARG:HE	1.50	0.77
1:B:341:VAL:O	1:B:342:ALA:HB3	1.86	0.76
1:C:272:ASN:ND2	1:C:274:ASP:H	1.83	0.76
1:B:138:ASN:HA	3:B:4664:HOH:O	1.85	0.76
1:D:106:SER:HB3	1:D:115:LEU:HB3	1.67	0.76
1:C:276:LEU:H	1:C:276:LEU:CD2	1.99	0.76
1:B:39:SER:HB2	1:B:40:ARG:HE	1.50	0.76
1:D:276:LEU:H	1:D:276:LEU:CD2	1.98	0.76
1:D:272:ASN:ND2	1:D:274:ASP:H	1.84	0.76
1:D:272:ASN:HD22	1:D:274:ASP:H	1.33	0.75
1:C:717:ALA:O	1:D:736:THR:HG21	1.86	0.75
1:B:160:VAL:HG23	1:B:161:GLY:H	1.51	0.75
1:B:272:ASN:HD22	1:B:274:ASP:H	1.33	0.75
1:C:736:THR:HG21	1:D:717:ALA:O	1.86	0.75
1:C:358:ARG:NH1	3:C:1424:HOH:O	2.20	0.75
1:D:528:MET:HE3	1:D:530:LEU:HD21	1.67	0.74

Continued on next page...

Continued from previous page...

Atom-1	Atom-2	Interatomic distance (Å)	Clash overlap (Å)
1:C:106:SER:HB3	1:C:115:LEU:HB3	1.67	0.74
1:B:726:VAL:HG12	1:B:728:VAL:HG23	1.67	0.74
1:D:40:ARG:HA	3:D:1013:HOH:O	1.87	0.74
1:A:171:ASP:OD1	1:A:186:THR:HG23	1.87	0.74
1:B:243:ASP:HB3	3:B:4287:HOH:O	1.87	0.74
1:B:171:ASP:OD1	1:B:186:THR:HG23	1.86	0.74
1:D:184:ARG:NH1	1:D:187:TRP:HA	2.03	0.73
1:C:184:ARG:NH1	1:C:187:TRP:HA	2.03	0.73
1:A:160:VAL:HG23	1:A:161:GLY:H	1.54	0.73
1:C:538:LYS:HG2	3:C:1456:HOH:O	1.90	0.72
1:A:736:THR:CG2	1:B:721:LYS:HB2	2.19	0.72
1:D:54:ARG:HG2	3:D:1051:HOH:O	1.89	0.72
1:C:41:LYS:HB2	3:C:1002:HOH:O	1.91	0.71
1:D:114:ILE:CD1	1:D:137:LEU:HD21	2.21	0.71
1:D:361:GLU:HG2	3:D:789:HOH:O	1.90	0.71
1:A:721:LYS:HB2	1:B:736:THR:HG21	1.71	0.71
1:B:693:GLU:OE1	1:B:696:LYS:HE2	1.91	0.71
1:A:721:LYS:HB2	1:B:736:THR:CG2	2.20	0.70
1:A:693:GLU:OE1	1:A:696:LYS:HE2	1.91	0.70
1:C:114:ILE:CD1	1:C:137:LEU:HD21	2.22	0.70
1:D:614:SER:HA	1:D:619:VAL:HB	1.74	0.70
1:A:289:ALA:HB2	3:A:1302:HOH:O	1.90	0.70
1:C:676:PRO:HG2	1:C:677:GLU:OE2	1.91	0.70
1:C:528:MET:CE	1:C:530:LEU:HD21	2.21	0.70
1:B:272:ASN:ND2	1:B:274:ASP:H	1.90	0.70
1:A:697:GLN:HG3	3:A:1370:HOH:O	1.90	0.70
1:D:528:MET:CE	1:D:530:LEU:HD21	2.21	0.70
1:A:193:ILE:HG22	1:A:194:ILE:HG13	1.74	0.69
1:B:410:LEU:HD13	1:B:415:LEU:HD23	1.73	0.69
1:C:614:SER:HA	1:C:619:VAL:HB	1.74	0.69
1:A:392:LYS:HB3	3:A:992:HOH:O	1.91	0.69
1:B:193:ILE:HG22	1:B:194:ILE:HG13	1.74	0.69
1:D:171:ASP:OD1	1:D:186:THR:HG23	1.93	0.69
1:C:171:ASP:OD1	1:C:186:THR:HG23	1.92	0.69
1:A:272:ASN:HD22	1:A:274:ASP:H	1.39	0.69
1:D:676:PRO:HG2	1:D:677:GLU:OE2	1.91	0.69
1:A:341:VAL:O	1:A:342:ALA:CB	2.42	0.68
1:A:410:LEU:HD13	1:A:415:LEU:HD23	1.75	0.68
1:A:366:LEU:HD23	3:A:1437:HOH:O	1.94	0.68
1:A:736:THR:HG21	1:B:721:LYS:HB2	1.75	0.68
1:C:105:TYR:HB2	3:C:1041:HOH:O	1.93	0.68

Continued on next page...

Continued from previous page...

Atom-1	Atom-2	Interatomic distance (Å)	Clash overlap (Å)
1:D:651:ILE:HG21	1:D:755:MET:CE	2.24	0.67
1:A:272:ASN:ND2	1:A:274:ASP:H	1.93	0.67
1:A:234:PRO:HB2	1:B:248:TYR:CZ	2.29	0.67
1:C:69:LEU:CD1	1:C:107:ILE:HD12	2.25	0.67
1:A:289:ALA:CB	1:A:290:PRO:HA	2.21	0.67
1:A:481:THR:OG1	1:A:483:HIS:HE1	1.78	0.67
1:B:160:VAL:HG23	1:B:161:GLY:N	2.10	0.67
1:C:429:ARG:NE	3:C:1421:HOH:O	2.28	0.67
1:B:289:ALA:CB	1:B:290:PRO:HA	2.21	0.66
1:D:320:GLN:OE1	1:D:669:ARG:HD3	1.95	0.66
1:C:651:ILE:HG21	1:C:755:MET:CE	2.26	0.66
1:B:320:GLN:OE1	1:B:669:ARG:HD3	1.94	0.66
1:B:105:TYR:HB2	3:B:4361:HOH:O	1.96	0.66
1:D:177:GLU:HB2	1:D:180:LEU:HD22	1.77	0.66
1:D:302:ASP:HB3	1:D:314:GLN:HB2	1.77	0.66
1:A:289:ALA:CB	1:A:290:PRO:CA	2.74	0.66
1:D:69:LEU:CD1	1:D:107:ILE:HD12	2.25	0.66
1:D:334:SER:HB3	1:D:336:ARG:HD2	1.78	0.66
1:C:139:LYS:HD3	3:C:1223:HOH:O	1.94	0.66
1:D:334:SER:HB3	1:D:336:ARG:CD	2.25	0.65
1:B:596:ARG:O	1:B:597:ARG:HD3	1.97	0.65
1:D:90:LEU:O	1:D:90:LEU:HD22	1.95	0.65
1:D:140:ARG:HH11	1:D:140:ARG:HG2	1.61	0.65
1:B:74:ASN:C	1:B:92:ASN:HB3	2.17	0.65
1:C:90:LEU:HD22	1:C:90:LEU:O	1.96	0.65
1:D:153:GLN:HE22	1:D:170:ASN:ND2	1.94	0.65
1:C:361:GLU:HG2	3:C:839:HOH:O	1.97	0.65
1:C:140:ARG:HG2	1:C:140:ARG:HH11	1.62	0.65
1:A:320:GLN:OE1	1:A:669:ARG:HD3	1.95	0.65
1:C:334:SER:HB3	1:C:336:ARG:CD	2.26	0.65
1:C:302:ASP:HB3	1:C:314:GLN:HB2	1.76	0.65
1:A:561:LEU:HB3	3:A:1680:HOH:O	1.95	0.65
1:D:358:ARG:NH2	3:D:1416:HOH:O	2.30	0.65
1:A:596:ARG:O	1:A:597:ARG:HD3	1.97	0.64
1:A:438:ASP:OD1	1:A:440:THR:HB	1.97	0.64
1:C:153:GLN:HE22	1:C:170:ASN:ND2	1.94	0.64
1:C:184:ARG:HH11	1:C:187:TRP:HA	1.62	0.64
1:D:510:PRO:HD3	1:D:569:SER:HB2	1.79	0.64
1:A:153:GLN:HE22	1:A:170:ASN:ND2	1.96	0.64
1:A:74:ASN:C	1:A:92:ASN:HB3	2.17	0.64
1:B:502:LYS:O	1:B:505:GLN:HG2	1.98	0.64

Continued on next page...

Continued from previous page...

Atom-1	Atom-2	Interatomic distance (Å)	Clash overlap (Å)
1:C:320:GLN:OE1	1:C:669:ARG:HD3	1.97	0.64
1:C:57:LEU:HD21	3:C:1136:HOH:O	1.98	0.64
1:C:277:SER:O	1:C:278:SER:HB3	1.96	0.64
1:B:76:ILE:HB	1:B:90:LEU:CD1	2.28	0.64
1:A:502:LYS:O	1:A:505:GLN:HG2	1.97	0.64
1:C:290:PRO:HG3	1:C:326:ASP:OD2	1.98	0.64
1:A:39:SER:O	1:A:40:ARG:O	2.16	0.64
1:B:39:SER:O	1:B:40:ARG:O	2.15	0.64
1:C:334:SER:HB3	1:C:336:ARG:HD2	1.78	0.63
1:D:93:SER:HA	1:D:96:ASP:OD1	1.97	0.63
1:A:160:VAL:HG23	1:A:161:GLY:N	2.12	0.63
1:D:341:VAL:O	1:D:342:ALA:HB3	1.98	0.63
1:A:76:ILE:HB	1:A:90:LEU:CD1	2.29	0.63
1:B:442:VAL:HG13	3:B:4689:HOH:O	1.98	0.63
1:C:93:SER:HA	1:C:96:ASP:OD1	1.98	0.63
1:C:289:ALA:CB	1:C:290:PRO:HA	2.21	0.63
1:C:76:ILE:HB	1:C:90:LEU:CD1	2.29	0.63
1:D:173:TYR:CE2	1:D:184:ARG:HG2	2.33	0.63
1:A:366:LEU:HB3	3:A:1261:HOH:O	1.98	0.63
1:C:331:ASP:HB3	1:C:334:SER:HB2	1.81	0.63
1:B:651:ILE:HG21	1:B:755:MET:HE2	1.80	0.63
1:B:438:ASP:OD1	1:B:440:THR:HB	1.99	0.63
1:D:147:ARG:HD3	3:D:948:HOH:O	1.99	0.63
1:A:114:ILE:CD1	1:A:137:LEU:HD21	2.29	0.63
1:C:510:PRO:HD3	1:C:569:SER:HB2	1.79	0.63
1:D:340:LEU:O	1:D:343:ARG:HB3	1.98	0.62
1:C:760:LYS:HB3	3:C:1519:HOH:O	1.98	0.62
1:D:293:MET:HE2	1:D:317:ARG:HG3	1.79	0.62
1:D:40:ARG:HH11	1:D:40:ARG:HG2	1.64	0.62
1:B:481:THR:OG1	1:B:483:HIS:HE1	1.82	0.62
1:C:177:GLU:HB2	1:C:180:LEU:HD22	1.79	0.62
1:D:277:SER:O	1:D:278:SER:HB3	1.98	0.62
1:C:340:LEU:O	1:C:343:ARG:HB3	1.99	0.62
1:D:184:ARG:HH11	1:D:187:TRP:HA	1.63	0.62
1:A:377:ASN:HB3	1:A:379:GLU:H	1.64	0.62
1:C:183:TYR:HE1	1:C:277:SER:O	1.83	0.62
1:C:65:ASP:OD2	1:C:466:LYS:HB2	1.99	0.62
1:B:153:GLN:HE22	1:B:170:ASN:ND2	1.96	0.62
1:B:114:ILE:CD1	1:B:137:LEU:HD21	2.29	0.62
1:D:65:ASP:OD2	1:D:466:LYS:HB2	1.99	0.62
1:C:173:TYR:CE2	1:C:184:ARG:HG2	2.35	0.62

Continued on next page...

Continued from previous page...

Atom-1	Atom-2	Interatomic distance (Å)	Clash overlap (Å)
1:A:39:SER:HB2	1:A:40:ARG:NE	2.15	0.62
1:C:410:LEU:HD13	1:C:415:LEU:HD23	1.82	0.61
1:A:159:PRO:HG2	1:A:217:SER:O	2.00	0.61
1:A:170:ASN:N	1:A:170:ASN:HD22	1.97	0.61
1:B:377:ASN:HB3	1:B:379:GLU:H	1.65	0.61
1:C:341:VAL:O	1:C:342:ALA:HB3	1.99	0.61
1:A:56:LYS:HE3	3:A:1393:HOH:O	2.01	0.61
1:D:290:PRO:HG3	1:D:326:ASP:OD2	2.00	0.61
1:D:640:LEU:HD11	1:D:650:GLY:HA3	1.82	0.61
1:A:184:ARG:HH11	1:A:187:TRP:HA	1.66	0.61
1:C:390:ASP:HB3	3:C:1086:HOH:O	1.99	0.61
1:D:293:MET:CE	1:D:317:ARG:HG3	2.31	0.61
1:C:158:SER:HB3	1:C:163:LYS:HB2	1.82	0.61
1:D:331:ASP:HB3	1:D:334:SER:HB2	1.81	0.61
1:D:651:ILE:HG21	1:D:755:MET:HE2	1.82	0.61
1:D:489:LYS:HB3	1:D:489:LYS:NZ	2.16	0.61
1:B:272:ASN:HD21	1:B:274:ASP:HB2	1.65	0.60
1:C:640:LEU:HD11	1:C:650:GLY:HA3	1.83	0.60
1:D:76:ILE:HB	1:D:90:LEU:CD1	2.30	0.60
1:D:272:ASN:HD22	1:D:272:ASN:C	2.04	0.60
1:C:191:GLU:HG3	3:C:1215:HOH:O	2.00	0.60
1:B:184:ARG:HH11	1:B:187:TRP:HA	1.65	0.60
1:C:40:ARG:HG2	1:C:40:ARG:HH11	1.65	0.60
1:B:289:ALA:CB	1:B:290:PRO:CA	2.76	0.60
1:C:412:SER:HB3	3:C:1512:HOH:O	2.02	0.60
1:D:158:SER:HB3	1:D:163:LYS:HB2	1.82	0.60
1:D:183:TYR:HE1	1:D:277:SER:O	1.85	0.60
1:C:333:SER:HB2	3:C:1046:HOH:O	2.00	0.60
1:D:410:LEU:HD13	1:D:415:LEU:HD23	1.82	0.60
1:A:528:MET:CE	1:A:530:LEU:HD21	2.31	0.60
1:A:72:GLN:HB3	3:A:1335:HOH:O	2.01	0.60
1:B:290:PRO:HG3	1:B:326:ASP:OD2	2.02	0.60
1:B:528:MET:CE	1:B:530:LEU:HD21	2.31	0.60
1:A:640:LEU:HD11	1:A:650:GLY:HA3	1.84	0.60
1:A:61:ARG:HG3	3:A:1599:HOH:O	2.02	0.60
1:A:253:ARG:HH22	1:B:253:ARG:NH2	1.98	0.60
1:C:234:PRO:HB2	1:D:248:TYR:CZ	2.37	0.60
1:B:159:PRO:HG2	1:B:217:SER:O	2.01	0.60
1:B:39:SER:HB2	1:B:40:ARG:NE	2.15	0.59
1:B:512:LYS:HD3	3:B:4204:HOH:O	2.02	0.59
1:A:177:GLU:HB2	1:A:180:LEU:HD22	1.84	0.59

Continued on next page...

Continued from previous page...

Atom-1	Atom-2	Interatomic distance (Å)	Clash overlap (Å)
1:B:272:ASN:C	1:B:272:ASN:HD22	2.06	0.59
1:C:422:TYR:CE2	1:C:423:LYS:HD3	2.37	0.59
1:B:184:ARG:HD3	1:B:186:THR:O	2.02	0.59
1:A:310:ARG:HH12	1:A:343:ARG:NH1	2.00	0.59
1:A:290:PRO:HG3	1:A:326:ASP:OD2	2.01	0.59
1:A:272:ASN:HD21	1:A:274:ASP:HB2	1.68	0.59
1:D:154:TRP:CE2	1:D:212:SER:HB2	2.37	0.59
1:C:489:LYS:HB3	1:C:489:LYS:NZ	2.18	0.59
1:C:293:MET:CE	1:C:317:ARG:HG3	2.32	0.59
1:A:310:ARG:NE	3:A:1082:HOH:O	2.35	0.59
1:D:40:ARG:NH1	3:D:1417:HOH:O	2.36	0.59
1:B:56:LYS:HE3	3:B:4521:HOH:O	2.01	0.59
1:C:272:ASN:C	1:C:272:ASN:HD22	2.05	0.58
1:D:77:LEU:HD23	1:D:88:VAL:HA	1.85	0.58
1:C:154:TRP:CE2	1:C:212:SER:HB2	2.37	0.58
1:D:61:ARG:HG2	3:D:1448:HOH:O	2.03	0.58
1:D:74:ASN:C	1:D:92:ASN:HB3	2.24	0.58
1:D:139:LYS:HD3	3:D:1345:HOH:O	2.03	0.58
1:A:184:ARG:HD3	1:A:186:THR:O	2.04	0.58
1:B:184:ARG:NH1	1:B:187:TRP:HA	2.18	0.58
1:A:658:ARG:HG2	1:A:661:TYR:CE2	2.37	0.58
1:C:651:ILE:HG21	1:C:755:MET:HE2	1.85	0.58
1:D:289:ALA:CB	1:D:290:PRO:HA	2.21	0.58
1:C:147:ARG:HD3	3:C:1283:HOH:O	2.04	0.58
1:A:597:ARG:HH12	1:A:679:ASN:HD21	1.52	0.58
1:B:177:GLU:HB2	1:B:180:LEU:HD22	1.86	0.58
1:A:338:ASN:HB2	3:A:914:HOH:O	2.04	0.58
1:A:341:VAL:HG11	3:A:1407:HOH:O	2.04	0.58
1:A:184:ARG:NH1	1:A:187:TRP:HA	2.19	0.57
1:D:613:PHE:O	1:D:616:MET:HB2	2.03	0.57
1:A:140:ARG:HG2	1:A:140:ARG:NH1	2.15	0.57
1:D:697:GLN:HG3	3:D:1264:HOH:O	2.05	0.57
1:C:172:ILE:H	1:C:186:THR:CG2	2.13	0.57
1:A:276:LEU:H	1:A:276:LEU:HD23	1.69	0.57
1:B:640:LEU:HD11	1:B:650:GLY:HA3	1.85	0.57
1:A:489:LYS:HB3	1:A:489:LYS:HZ3	1.68	0.57
1:B:310:ARG:HG3	1:B:329:ASP:OD1	2.05	0.57
1:B:341:VAL:O	1:B:342:ALA:CB	2.49	0.57
1:A:272:ASN:C	1:A:272:ASN:HD22	2.06	0.57
1:C:613:PHE:O	1:C:616:MET:HB2	2.03	0.57
1:B:90:LEU:O	1:B:90:LEU:HD22	2.05	0.57

Continued on next page...

Continued from previous page...

Atom-1	Atom-2	Interatomic distance (Å)	Clash overlap (Å)
1:D:170:ASN:N	1:D:170:ASN:HD22	2.03	0.57
1:A:622:LYS:NZ	1:A:622:LYS:HB2	2.20	0.57
1:C:77:LEU:HD23	1:C:88:VAL:HA	1.86	0.57
1:C:74:ASN:C	1:C:92:ASN:HB3	2.24	0.57
1:B:658:ARG:HG2	1:B:661:TYR:CE2	2.39	0.57
1:B:581:ARG:HB2	1:B:605:ASP:OD2	2.04	0.57
1:A:464:GLU:HG3	3:A:1683:HOH:O	2.05	0.57
1:D:39:SER:O	1:D:40:ARG:O	2.23	0.57
1:B:392:LYS:HG3	1:B:393:ASP:H	1.70	0.57
1:C:293:MET:HE2	1:C:317:ARG:HG3	1.85	0.57
1:B:597:ARG:HH12	1:B:679:ASN:HD21	1.53	0.56
1:B:140:ARG:NH1	1:B:140:ARG:HG2	2.16	0.56
1:B:74:ASN:HB2	3:B:4264:HOH:O	2.06	0.56
1:C:341:VAL:HG12	3:C:1265:HOH:O	2.06	0.56
1:A:581:ARG:HB2	1:A:605:ASP:OD2	2.05	0.56
1:A:71:LYS:NZ	1:A:105:TYR:HB2	2.19	0.56
1:D:654:ALA:HA	1:D:704:HIS:CD2	2.40	0.56
1:C:161:GLY:HA3	3:C:1435:HOH:O	2.05	0.56
1:B:310:ARG:HH12	1:B:343:ARG:NH1	2.03	0.56
1:B:170:ASN:N	1:B:170:ASN:HD22	2.01	0.56
1:B:71:LYS:NZ	1:B:105:TYR:HB2	2.20	0.56
1:A:156:THR:HG21	1:A:214:LEU:HD11	1.88	0.56
1:D:279:VAL:HB	3:D:1256:HOH:O	2.04	0.56
1:A:90:LEU:O	1:A:90:LEU:HD22	2.05	0.56
1:C:697:GLN:HG3	3:C:1134:HOH:O	2.06	0.56
1:A:289:ALA:HB1	1:A:290:PRO:C	2.25	0.56
1:A:218:PRO:HB2	1:A:308:GLN:NE2	2.21	0.56
1:B:276:LEU:HD23	1:B:276:LEU:H	1.70	0.56
1:D:243:ASP:HB3	3:D:1167:HOH:O	2.05	0.56
1:C:39:SER:O	1:C:40:ARG:O	2.24	0.56
1:B:147:ARG:HD3	3:B:4493:HOH:O	2.05	0.56
1:B:654:ALA:HA	1:B:704:HIS:CD2	2.40	0.56
1:D:377:ASN:HB3	1:D:379:GLU:H	1.71	0.56
1:B:756:SER:O	1:B:760:LYS:HG3	2.06	0.56
1:B:156:THR:HG21	1:B:214:LEU:HD11	1.88	0.56
1:D:422:TYR:CE2	1:D:423:LYS:HD3	2.41	0.56
1:D:338:ASN:HB2	3:D:1218:HOH:O	2.06	0.56
1:A:139:LYS:HD3	3:A:1198:HOH:O	2.06	0.56
1:B:218:PRO:HB2	1:B:308:GLN:NE2	2.20	0.55
1:B:276:LEU:CD2	1:B:276:LEU:H	2.19	0.55
1:A:651:ILE:HG21	1:A:755:MET:HE2	1.88	0.55

Continued on next page...

Continued from previous page...

Atom-1	Atom-2	Interatomic distance (Å)	Clash overlap (Å)
1:C:654:ALA:HA	1:C:704:HIS:CD2	2.41	0.55
1:A:310:ARG:HG3	1:A:329:ASP:OD1	2.06	0.55
1:A:253:ARG:NH2	1:B:253:ARG:HH22	1.99	0.55
1:B:161:GLY:HA3	3:B:4359:HOH:O	2.05	0.55
1:C:170:ASN:HD22	1:C:170:ASN:N	2.04	0.55
1:A:654:ALA:HA	1:A:704:HIS:CD2	2.41	0.55
1:A:736:THR:HG23	1:B:721:LYS:HB2	1.89	0.55
1:D:481:THR:OG1	1:D:483:HIS:HE1	1.88	0.55
1:D:438:ASP:OD2	1:D:441:LYS:HG3	2.06	0.55
1:A:717:ALA:O	1:B:736:THR:HG21	2.07	0.55
1:C:536:LYS:HE3	3:C:1107:HOH:O	2.06	0.55
1:A:276:LEU:CD2	1:A:276:LEU:H	2.19	0.55
1:A:310:ARG:CZ	3:A:1082:HOH:O	2.53	0.55
1:C:438:ASP:OD2	1:C:441:LYS:HG3	2.07	0.55
1:C:388:GLN:CB	1:C:391:LYS:HD3	2.37	0.55
1:B:321:ASN:ND2	3:B:4147:HOH:O	2.40	0.55
1:A:736:THR:HG21	1:B:717:ALA:O	2.08	0.54
1:C:377:ASN:HB2	1:C:381:TYR:O	2.06	0.54
1:B:520:ASN:O	1:B:521:GLU:HB2	2.07	0.54
1:D:172:ILE:H	1:D:186:THR:CG2	2.15	0.54
1:A:520:ASN:O	1:A:521:GLU:HB2	2.07	0.54
1:C:481:THR:OG1	1:C:483:HIS:HE1	1.89	0.54
1:B:441:LYS:HE3	3:B:4309:HOH:O	2.07	0.54
1:D:512:LYS:HD3	3:D:1439:HOH:O	2.07	0.54
1:A:392:LYS:HG3	1:A:393:ASP:H	1.71	0.54
1:D:125:ARG:HG2	1:D:126:HIS:NE2	2.22	0.54
1:B:510:PRO:HD3	1:B:569:SER:HB2	1.89	0.54
1:A:161:GLY:HA3	3:A:994:HOH:O	2.08	0.54
1:A:513:LYS:HG3	3:A:1695:HOH:O	2.07	0.54
1:B:622:LYS:NZ	1:B:622:LYS:HB2	2.23	0.54
1:D:622:LYS:HB2	1:D:622:LYS:NZ	2.23	0.54
1:C:377:ASN:HB3	1:C:379:GLU:H	1.72	0.54
1:B:57:LEU:HB3	3:B:4313:HOH:O	2.07	0.54
1:C:622:LYS:HB2	1:C:622:LYS:NZ	2.23	0.54
1:B:289:ALA:HB1	1:B:290:PRO:C	2.28	0.54
1:D:388:GLN:CB	1:D:391:LYS:HD3	2.38	0.54
1:A:538:LYS:HG2	3:A:1668:HOH:O	2.08	0.54
1:A:676:PRO:HG2	1:A:677:GLU:OE2	2.08	0.54
1:A:285:ILE:N	1:A:285:ILE:HD12	2.23	0.54
1:A:388:GLN:HG3	3:A:1249:HOH:O	2.08	0.54
1:A:392:LYS:HG3	1:A:393:ASP:N	2.23	0.53

Continued on next page...

Continued from previous page...

Atom-1	Atom-2	Interatomic distance (Å)	Clash overlap (Å)
1:B:764:SER:HA	3:B:4322:HOH:O	2.08	0.53
1:D:377:ASN:HB2	1:D:381:TYR:O	2.08	0.53
1:C:125:ARG:HG2	1:C:126:HIS:NE2	2.24	0.53
1:A:459:VAL:HG22	1:A:460:SER:N	2.24	0.53
1:A:277:SER:O	1:A:278:SER:HB3	2.09	0.53
3:C:791:HOH:O	1:D:736:THR:HG23	2.08	0.53
1:A:756:SER:O	1:A:760:LYS:HG3	2.08	0.53
1:C:651:ILE:HG21	1:C:755:MET:HE3	1.90	0.53
1:D:61:ARG:HG3	3:D:1513:HOH:O	2.06	0.53
1:C:80:ASN:HB3	1:C:85:ASN:OD1	2.09	0.53
1:B:535:ASP:OD1	1:B:537:SER:HB3	2.08	0.53
1:C:41:LYS:HD3	1:C:41:LYS:H	1.73	0.53
1:C:140:ARG:NH1	1:C:140:ARG:HG2	2.24	0.53
1:B:85:ASN:ND2	3:B:4474:HOH:O	2.42	0.53
1:B:278:SER:HB3	3:B:4698:HOH:O	2.09	0.53
1:B:392:LYS:HG3	1:B:393:ASP:N	2.23	0.53
1:D:600:THR:O	1:D:603:VAL:HG13	2.09	0.53
1:C:658:ARG:HG2	1:C:661:TYR:CE2	2.44	0.53
1:A:487:ASN:ND2	3:A:890:HOH:O	2.41	0.53
1:C:422:TYR:CD2	1:C:423:LYS:HD3	2.44	0.53
1:D:520:ASN:O	1:D:521:GLU:HB2	2.08	0.53
1:D:194:ILE:HD12	3:D:1095:HOH:O	2.09	0.53
1:B:377:ASN:HB2	1:B:381:TYR:O	2.09	0.53
1:A:510:PRO:HD3	1:A:569:SER:HB2	1.91	0.53
1:C:512:LYS:HD3	3:C:888:HOH:O	2.09	0.53
1:B:718:GLN:HE21	1:B:718:GLN:HA	1.74	0.52
1:C:341:VAL:C	1:C:343:ARG:H	2.12	0.52
1:C:502:LYS:O	1:C:505:GLN:HG2	2.09	0.52
1:D:390:ASP:HB3	3:D:1443:HOH:O	2.10	0.52
1:D:41:LYS:H	1:D:41:LYS:HD3	1.73	0.52
1:B:489:LYS:HB3	1:B:489:LYS:HZ3	1.71	0.52
1:D:684:ARG:HG3	3:D:1350:HOH:O	2.08	0.52
1:B:459:VAL:HG22	1:B:460:SER:N	2.24	0.52
1:B:334:SER:HB3	1:B:336:ARG:CD	2.39	0.52
1:D:183:TYR:CD2	1:D:276:LEU:HG	2.43	0.52
1:A:718:GLN:HA	1:A:718:GLN:HE21	1.75	0.52
1:D:751:ILE:O	1:D:755:MET:HG3	2.09	0.52
1:A:147:ARG:HD3	3:A:1214:HOH:O	2.10	0.52
1:B:513:LYS:O	1:B:527:GLN:HA	2.09	0.52
1:B:154:TRP:CE2	1:B:212:SER:HB2	2.44	0.52
1:A:535:ASP:OD1	1:A:537:SER:HB3	2.10	0.52

Continued on next page...

Continued from previous page...

Atom-1	Atom-2	Interatomic distance (Å)	Clash overlap (Å)
1:B:487:ASN:HB2	3:B:4104:HOH:O	2.09	0.52
1:C:57:LEU:HD23	3:C:917:HOH:O	2.09	0.52
1:A:651:ILE:HG21	1:A:755:MET:CE	2.40	0.52
1:A:704:HIS:HE1	1:A:711:VAL:O	1.92	0.52
1:A:334:SER:HB3	1:A:336:ARG:CD	2.39	0.52
1:B:277:SER:O	1:B:278:SER:HB3	2.09	0.52
1:D:658:ARG:HG2	1:D:661:TYR:CE2	2.45	0.52
1:B:676:PRO:HG2	1:B:677:GLU:OE2	2.10	0.52
1:C:486:VAL:HG13	1:C:487:ASN:N	2.25	0.52
1:B:340:LEU:C	1:B:341:VAL:O	2.44	0.52
1:D:341:VAL:C	1:D:343:ARG:H	2.12	0.52
1:A:513:LYS:O	1:A:527:GLN:HA	2.10	0.52
1:C:277:SER:O	1:C:278:SER:CB	2.58	0.52
1:D:651:ILE:HG21	1:D:755:MET:HE3	1.91	0.52
1:D:140:ARG:NH1	1:D:140:ARG:HG2	2.23	0.52
1:A:56:LYS:HD2	3:A:1079:HOH:O	2.10	0.52
1:D:486:VAL:HG13	1:D:487:ASN:N	2.25	0.52
1:A:397:ILE:HG13	1:A:398:THR:HG23	1.92	0.52
1:A:276:LEU:HD23	3:A:1365:HOH:O	2.09	0.51
1:B:183:TYR:HE1	1:B:277:SER:O	1.93	0.51
1:C:203:TYR:HA	1:C:207:VAL:HG13	1.92	0.51
1:B:397:ILE:HG13	1:B:398:THR:HG23	1.91	0.51
1:A:377:ASN:HB2	1:A:381:TYR:O	2.10	0.51
1:D:203:TYR:HA	1:D:207:VAL:HG13	1.93	0.51
1:B:402:TRP:CD2	1:B:421:GLU:HB2	2.46	0.51
1:C:520:ASN:O	1:C:521:GLU:HB2	2.09	0.51
1:B:285:ILE:HD12	1:B:285:ILE:N	2.25	0.51
1:A:302:ASP:HB3	1:A:314:GLN:HB2	1.93	0.51
1:C:751:ILE:O	1:C:755:MET:HG3	2.10	0.51
1:D:60:LEU:C	1:D:60:LEU:HD12	2.30	0.51
1:D:523:LYS:HG2	3:D:978:HOH:O	2.11	0.51
1:D:341:VAL:HG22	1:D:342:ALA:N	2.26	0.51
1:B:651:ILE:HG21	1:B:755:MET:CE	2.40	0.51
1:A:402:TRP:CD2	1:A:421:GLU:HB2	2.45	0.51
1:C:81:ALA:O	1:C:492:ARG:NH2	2.44	0.51
1:C:156:THR:HG21	1:C:214:LEU:HD11	1.93	0.51
1:C:272:ASN:HD21	1:C:274:ASP:HB2	1.75	0.51
1:C:341:VAL:HG22	1:C:342:ALA:N	2.26	0.51
1:C:243:ASP:HB3	3:C:1080:HOH:O	2.11	0.51
1:A:110:ASP:OD2	1:A:162:HIS:ND1	2.44	0.51
1:C:60:LEU:HD12	1:C:60:LEU:C	2.30	0.51

Continued on next page...

Continued from previous page...

Atom-1	Atom-2	Interatomic distance (Å)	Clash overlap (Å)
1:C:397:ILE:HG13	1:C:398:THR:HG23	1.92	0.51
1:C:606:GLN:NE2	3:C:774:HOH:O	2.40	0.50
1:D:277:SER:O	1:D:278:SER:CB	2.59	0.50
1:D:272:ASN:HD21	1:D:274:ASP:HB2	1.77	0.50
1:A:392:LYS:HG3	3:A:1330:HOH:O	2.11	0.50
1:D:415:LEU:HD13	1:D:415:LEU:C	2.32	0.50
1:A:422:TYR:CE2	1:A:423:LYS:HD3	2.46	0.50
1:D:502:LYS:O	1:D:505:GLN:HG2	2.10	0.50
1:C:321:ASN:ND2	3:C:1514:HOH:O	2.45	0.50
1:C:183:TYR:CD2	1:C:276:LEU:HG	2.45	0.50
1:B:71:LYS:HZ1	1:B:105:TYR:HB2	1.76	0.50
1:C:85:ASN:ND2	3:C:911:HOH:O	2.44	0.50
1:C:760:LYS:HE2	3:C:1519:HOH:O	2.10	0.50
1:B:110:ASP:OD2	1:B:162:HIS:ND1	2.45	0.50
1:C:600:THR:O	1:C:603:VAL:HG13	2.10	0.50
1:A:183:TYR:HE1	1:A:277:SER:O	1.94	0.50
1:D:472:CYS:O	1:D:478:PRO:HA	2.11	0.50
1:C:741:GLY:O	1:C:742:ILE:C	2.50	0.50
1:C:276:LEU:N	1:C:276:LEU:CD2	2.68	0.50
1:A:597:ARG:NH1	1:A:679:ASN:HD21	2.09	0.50
1:D:741:GLY:O	1:D:742:ILE:C	2.50	0.50
1:C:108:SER:C	1:C:110:ASP:H	2.14	0.50
1:D:322:TYR:OH	1:D:346:ILE:HD13	2.12	0.50
1:B:489:LYS:HB3	1:B:489:LYS:HZ2	1.76	0.50
1:D:597:ARG:NH1	1:D:682:HIS:HB2	2.26	0.50
1:C:487:ASN:HB2	3:C:812:HOH:O	2.11	0.50
1:B:302:ASP:HB3	1:B:314:GLN:HB2	1.92	0.50
1:D:397:ILE:HG13	1:D:398:THR:HG23	1.93	0.50
1:C:472:CYS:O	1:C:478:PRO:HA	2.11	0.50
1:D:114:ILE:HD11	1:D:137:LEU:HD21	1.92	0.50
1:A:159:PRO:HD3	1:A:216:TRP:HB3	1.93	0.50
1:A:658:ARG:O	1:A:658:ARG:HG3	2.11	0.50
1:C:193:ILE:HG22	1:C:194:ILE:HG13	1.94	0.50
1:B:516:PHE:CE2	1:B:523:LYS:HE2	2.47	0.50
1:D:80:ASN:HB3	1:D:85:ASN:OD1	2.11	0.50
1:A:741:GLY:O	1:A:742:ILE:C	2.50	0.50
1:A:310:ARG:NH2	3:A:1082:HOH:O	2.43	0.50
1:B:109:PRO:HG2	1:B:160:VAL:O	2.12	0.50
1:A:147:ARG:HB2	3:A:888:HOH:O	2.11	0.50
1:B:697:GLN:NE2	3:B:4265:HOH:O	2.44	0.50
1:B:704:HIS:HE1	1:B:711:VAL:O	1.93	0.49

Continued on next page...

Continued from previous page...

Atom-1	Atom-2	Interatomic distance (Å)	Clash overlap (Å)
1:B:276:LEU:N	1:B:276:LEU:CD2	2.76	0.49
1:B:606:GLN:NE2	3:B:4001:HOH:O	2.34	0.49
1:B:289:ALA:HB3	3:B:4250:HOH:O	2.13	0.49
1:D:276:LEU:N	1:D:276:LEU:CD2	2.67	0.49
1:C:89:PHE:HD1	1:C:90:LEU:HD12	1.76	0.49
1:B:483:HIS:HD2	3:B:4452:HOH:O	1.94	0.49
1:B:203:TYR:HA	1:B:207:VAL:HG13	1.94	0.49
1:B:106:SER:HB3	1:B:115:LEU:HB3	1.93	0.49
1:A:159:PRO:HD3	1:A:216:TRP:CB	2.42	0.49
1:D:422:TYR:CD2	1:D:423:LYS:HD3	2.47	0.49
1:A:154:TRP:CE2	1:A:212:SER:HB2	2.47	0.49
1:A:471:ARG:HG2	1:A:480:TYR:CD2	2.46	0.49
1:C:40:ARG:HB2	1:C:506:ASN:O	2.13	0.49
1:C:597:ARG:NH1	1:C:682:HIS:HB2	2.27	0.49
1:B:422:TYR:CE2	1:B:423:LYS:HD3	2.48	0.49
1:A:276:LEU:CD2	1:A:276:LEU:N	2.75	0.49
1:C:736:THR:HG23	3:D:804:HOH:O	2.13	0.49
1:A:392:LYS:HG2	3:A:1399:HOH:O	2.11	0.49
1:D:388:GLN:HG2	1:D:391:LYS:HD3	1.94	0.49
1:C:486:VAL:HG13	3:C:812:HOH:O	2.13	0.49
1:B:81:ALA:O	1:B:492:ARG:NH2	2.45	0.49
1:A:186:THR:HG21	1:A:196:ASN:CB	2.42	0.49
1:D:508:GLN:HG2	3:D:1465:HOH:O	2.12	0.49
1:A:415:LEU:HD13	1:A:415:LEU:C	2.32	0.49
1:A:81:ALA:O	1:A:492:ARG:NH2	2.44	0.49
1:C:107:ILE:HG12	1:C:114:ILE:HG12	1.95	0.49
1:D:89:PHE:HD1	1:D:90:LEU:HD12	1.77	0.49
1:C:388:GLN:HG2	1:C:391:LYS:HD3	1.94	0.49
1:B:171:ASP:HB2	3:B:4055:HOH:O	2.13	0.49
1:D:704:HIS:HD2	1:D:716:SER:OG	1.96	0.49
1:A:471:ARG:HD3	3:A:1265:HOH:O	2.12	0.49
1:D:679:ASN:ND2	3:D:920:HOH:O	2.44	0.49
1:C:289:ALA:CB	1:C:290:PRO:CA	2.83	0.49
1:D:69:LEU:HD11	1:D:107:ILE:HD12	1.94	0.49
1:A:106:SER:HB3	1:A:115:LEU:HB3	1.95	0.49
1:D:704:HIS:HE1	1:D:711:VAL:O	1.96	0.48
1:A:458:SER:OG	1:A:471:ARG:HB2	2.13	0.48
1:B:82:GLU:HG2	3:B:4837:HOH:O	2.12	0.48
1:A:358:ARG:HA	3:A:864:HOH:O	2.12	0.48
1:B:65:ASP:OD2	1:B:466:LYS:HB2	2.13	0.48
1:C:597:ARG:HG3	1:C:600:THR:HG21	1.95	0.48

Continued on next page...

Continued from previous page...

Atom-1	Atom-2	Interatomic distance (Å)	Clash overlap (Å)
1:D:81:ALA:O	1:D:492:ARG:NH2	2.45	0.48
1:C:322:TYR:OH	1:C:346:ILE:HD13	2.13	0.48
1:B:597:ARG:NH1	1:B:679:ASN:HD21	2.10	0.48
1:D:93:SER:HA	1:D:96:ASP:CG	2.34	0.48
1:B:622:LYS:HZ2	1:B:622:LYS:HB2	1.78	0.48
1:C:285:ILE:N	1:C:285:ILE:HD12	2.29	0.48
1:D:289:ALA:HA	1:D:294:LEU:HD11	1.96	0.48
1:B:658:ARG:O	1:B:658:ARG:HG3	2.12	0.48
1:D:156:THR:HG21	1:D:214:LEU:HD11	1.95	0.48
1:D:172:ILE:N	1:D:186:THR:HG22	2.20	0.48
1:A:109:PRO:HG2	1:A:160:VAL:O	2.13	0.48
1:D:193:ILE:HG22	1:D:194:ILE:HG13	1.96	0.48
1:A:516:PHE:CE2	1:A:523:LYS:HE2	2.48	0.48
1:B:51:ASN:HB2	3:B:4582:HOH:O	2.12	0.48
1:D:40:ARG:HB2	1:D:506:ASN:O	2.13	0.48
1:A:244:GLU:CD	1:B:689:MET:HG3	2.33	0.48
1:C:54:ARG:HG2	3:C:1152:HOH:O	2.13	0.48
1:A:489:LYS:HD3	3:A:1259:HOH:O	2.13	0.48
1:D:285:ILE:HD12	1:D:285:ILE:N	2.29	0.48
1:C:415:LEU:HD13	1:C:415:LEU:C	2.34	0.48
1:A:514:LEU:HD12	1:A:557:THR:HG22	1.96	0.48
1:C:114:ILE:HD11	1:C:137:LEU:HD21	1.95	0.48
1:B:415:LEU:HD13	1:B:415:LEU:C	2.34	0.48
1:D:108:SER:C	1:D:110:ASP:H	2.15	0.48
1:B:458:SER:OG	1:B:471:ARG:HB2	2.13	0.48
1:D:402:TRP:CD2	1:D:421:GLU:HB2	2.49	0.48
1:C:382:ARG:NH2	3:C:769:HOH:O	2.46	0.48
1:B:140:ARG:NH1	1:B:140:ARG:CG	2.77	0.48
1:B:74:ASN:HB3	1:B:92:ASN:HB3	1.94	0.48
1:A:704:HIS:HD2	1:A:716:SER:OG	1.96	0.48
1:D:51:ASN:HA	3:D:1304:HOH:O	2.13	0.48
1:D:197:GLY:C	1:D:213:ALA:HB3	2.34	0.48
1:B:186:THR:HG21	1:B:196:ASN:CB	2.44	0.47
1:D:40:ARG:HH11	1:D:40:ARG:CG	2.27	0.47
1:C:165:ALA:HB2	1:C:216:TRP:CZ2	2.50	0.47
1:B:69:LEU:HD13	1:B:107:ILE:HD12	1.97	0.47
1:A:74:ASN:HB3	1:A:92:ASN:OD1	2.14	0.47
1:B:159:PRO:HD3	1:B:216:TRP:CB	2.44	0.47
1:B:704:HIS:HD2	1:B:716:SER:OG	1.97	0.47
1:C:224:ALA:HB1	1:C:268:PHE:CZ	2.50	0.47
1:B:741:GLY:O	1:B:742:ILE:C	2.51	0.47

Continued on next page...

Continued from previous page...

Atom-1	Atom-2	Interatomic distance (Å)	Clash overlap (Å)
1:A:203:TYR:HA	1:A:207:VAL:HG13	1.95	0.47
1:D:289:ALA:CB	1:D:290:PRO:CA	2.82	0.47
1:D:107:ILE:HG12	1:D:114:ILE:HG12	1.96	0.47
1:D:726:VAL:CG1	1:D:728:VAL:HG23	2.39	0.47
1:A:74:ASN:HB3	1:A:92:ASN:HB3	1.95	0.47
1:A:544:LEU:HD21	1:A:606:GLN:HG3	1.97	0.47
1:D:165:ALA:HB2	1:D:216:TRP:CZ2	2.50	0.47
1:C:69:LEU:HD13	1:C:107:ILE:HD12	1.96	0.47
1:A:171:ASP:HA	1:A:186:THR:CG2	2.44	0.47
1:A:721:LYS:HB2	1:B:736:THR:HG23	1.97	0.47
1:D:136:ASP:CG	1:D:139:LYS:HG2	2.35	0.47
1:A:658:ARG:HB2	1:A:687:THR:HG22	1.97	0.47
1:B:471:ARG:HG2	1:B:480:TYR:CD2	2.49	0.47
1:D:471:ARG:HG2	1:D:480:TYR:CD2	2.49	0.47
1:C:89:PHE:CE1	1:C:107:ILE:HD13	2.49	0.47
1:A:340:LEU:C	1:A:341:VAL:O	2.45	0.47
1:B:658:ARG:HB2	1:B:687:THR:HG22	1.97	0.47
1:C:704:HIS:HE1	1:C:711:VAL:O	1.96	0.47
1:D:536:LYS:HG2	3:D:996:HOH:O	2.14	0.47
1:C:402:TRP:CD2	1:C:421:GLU:HB2	2.50	0.47
1:C:93:SER:HA	1:C:96:ASP:CG	2.34	0.47
1:A:651:ILE:HD13	1:A:755:MET:HE2	1.96	0.47
1:C:435:GLN:HG2	1:C:438:ASP:H	1.80	0.47
1:D:597:ARG:HG3	1:D:600:THR:HG21	1.96	0.47
1:C:310:ARG:HG3	1:C:329:ASP:OD1	2.15	0.47
1:A:435:GLN:NE2	1:A:441:LYS:HD2	2.29	0.47
1:A:140:ARG:CG	1:A:140:ARG:NH1	2.77	0.47
1:B:108:SER:C	1:B:110:ASP:N	2.68	0.47
1:C:194:ILE:HD12	3:C:1047:HOH:O	2.15	0.47
1:A:125:ARG:HG2	1:A:126:HIS:CD2	2.50	0.47
1:C:136:ASP:CG	1:C:139:LYS:HG2	2.35	0.47
1:B:544:LEU:HD21	1:B:606:GLN:HG3	1.96	0.47
1:B:125:ARG:HB3	3:B:4009:HOH:O	2.14	0.47
1:C:197:GLY:C	1:C:213:ALA:HB3	2.35	0.47
1:D:224:ALA:HB1	1:D:268:PHE:CZ	2.50	0.47
1:A:718:GLN:HE22	1:A:721:LYS:NZ	2.13	0.46
1:A:90:LEU:HD22	1:A:90:LEU:C	2.35	0.46
1:B:98:PHE:CE2	1:B:100:HIS:HB2	2.50	0.46
1:D:310:ARG:HG3	1:D:329:ASP:OD1	2.14	0.46
1:B:514:LEU:HD12	1:B:557:THR:HG22	1.96	0.46
1:C:289:ALA:HA	1:C:294:LEU:HD11	1.96	0.46

Continued on next page...

Continued from previous page...

Atom-1	Atom-2	Interatomic distance (Å)	Clash overlap (Å)
1:D:69:LEU:HD13	1:D:107:ILE:HD12	1.98	0.46
1:D:89:PHE:CE1	1:D:107:ILE:HD13	2.50	0.46
1:D:93:SER:HB2	1:D:96:ASP:OD2	2.15	0.46
1:B:651:ILE:HD13	1:B:755:MET:HE2	1.97	0.46
1:B:159:PRO:HD3	1:B:216:TRP:HB3	1.95	0.46
1:A:589:LYS:HB2	3:A:1645:HOH:O	2.15	0.46
1:A:489:LYS:CB	1:A:489:LYS:NZ	2.76	0.46
1:C:464:GLU:HG3	3:C:948:HOH:O	2.15	0.46
1:D:597:ARG:HD3	1:D:597:ARG:HA	1.64	0.46
1:C:726:VAL:O	1:C:726:VAL:HG13	2.15	0.46
1:D:726:VAL:O	1:D:726:VAL:CG1	2.64	0.46
1:B:323:SER:OG	1:B:347:GLU:HB3	2.16	0.46
1:C:111:GLY:O	1:C:137:LEU:HD12	2.16	0.46
1:C:679:ASN:ND2	3:C:978:HOH:O	2.49	0.46
1:C:471:ARG:HG2	1:C:480:TYR:CD2	2.50	0.46
1:B:171:ASP:HA	1:B:186:THR:CG2	2.45	0.46
1:A:39:SER:CB	1:A:40:ARG:HE	2.25	0.46
1:C:93:SER:HB2	1:C:96:ASP:OD2	2.15	0.46
1:D:486:VAL:HG13	1:D:487:ASN:H	1.80	0.46
1:D:522:THR:HG22	1:D:523:LYS:N	2.30	0.46
1:A:114:ILE:HD12	1:A:137:LEU:HD21	1.98	0.46
1:A:141:GLN:HG2	3:A:1198:HOH:O	2.15	0.46
1:A:651:ILE:CD1	1:A:755:MET:HE2	2.45	0.46
1:D:483:HIS:HD2	3:D:878:HOH:O	1.98	0.46
1:A:243:ASP:HB3	3:A:1258:HOH:O	2.15	0.46
1:D:132:TYR:HB2	3:D:1456:HOH:O	2.15	0.46
1:A:65:ASP:OD2	1:A:466:LYS:HB2	2.14	0.46
1:C:704:HIS:HD2	1:C:716:SER:OG	1.98	0.46
1:D:403:GLU:OE1	1:D:585:TYR:HA	2.15	0.46
1:B:90:LEU:HD22	1:B:90:LEU:C	2.36	0.46
1:D:546:VAL:CG2	1:D:547:TYR:N	2.78	0.46
1:A:463:LYS:HD3	1:A:463:LYS:HA	1.74	0.46
1:C:79:PHE:CD1	1:C:86:SER:HB3	2.51	0.45
1:B:76:ILE:HB	1:B:90:LEU:HD13	1.98	0.45
1:C:71:LYS:HE2	3:C:1041:HOH:O	2.15	0.45
1:B:486:VAL:HG13	1:B:487:ASN:N	2.31	0.45
1:C:496:ASP:HB2	3:C:1258:HOH:O	2.16	0.45
1:A:482:LEU:HA	1:A:482:LEU:HD23	1.79	0.45
1:B:435:GLN:NE2	1:B:441:LYS:HD2	2.32	0.45
1:C:286:GLN:NE2	1:C:288:THR:HG22	2.32	0.45
1:D:726:VAL:O	1:D:726:VAL:HG13	2.15	0.45

Continued on next page...

Continued from previous page...

Atom-1	Atom-2	Interatomic distance (Å)	Clash overlap (Å)
1:B:726:VAL:CG1	1:B:726:VAL:O	2.63	0.45
1:A:75:ASN:HB3	1:A:92:ASN:N	2.32	0.45
1:D:489:LYS:HZ3	1:D:489:LYS:HB3	1.80	0.45
1:B:532:PRO:HD3	1:B:569:SER:HA	1.99	0.45
1:A:323:SER:OG	1:A:347:GLU:HB3	2.16	0.45
1:B:114:ILE:HD12	1:B:137:LEU:HD21	1.99	0.45
1:A:726:VAL:O	1:A:726:VAL:CG1	2.65	0.45
1:C:314:GLN:HE22	1:C:373:LYS:NZ	2.14	0.45
1:A:71:LYS:HZ1	1:A:105:TYR:HB2	1.80	0.45
1:D:435:GLN:HG2	1:D:438:ASP:H	1.80	0.45
1:C:536:LYS:NZ	1:C:536:LYS:CB	2.80	0.45
1:D:306:ALA:CB	1:D:310:ARG:HD2	2.47	0.45
1:B:39:SER:CB	1:B:40:ARG:HE	2.25	0.45
1:B:74:ASN:HB3	1:B:92:ASN:OD1	2.16	0.45
1:D:498:SER:O	1:D:502:LYS:HG2	2.16	0.45
1:B:718:GLN:HE22	1:B:721:LYS:NZ	2.15	0.45
1:D:183:TYR:CE2	1:D:276:LEU:HG	2.52	0.45
1:D:253:ARG:HD2	3:D:1225:HOH:O	2.17	0.45
1:B:194:ILE:HD12	3:B:4346:HOH:O	2.17	0.45
1:D:697:GLN:HG3	3:D:1267:HOH:O	2.15	0.45
1:D:321:ASN:ND2	3:D:951:HOH:O	2.48	0.45
1:D:611:ARG:NH1	3:D:1422:HOH:O	2.50	0.45
1:D:289:ALA:HB3	3:D:1357:HOH:O	2.17	0.45
1:B:173:TYR:CE2	1:B:184:ARG:HG3	2.52	0.45
1:A:76:ILE:HB	1:A:90:LEU:HD13	1.97	0.45
1:A:108:SER:C	1:A:110:ASP:N	2.69	0.45
1:A:589:LYS:HD2	3:A:1645:HOH:O	2.17	0.45
1:A:241:TYR:CE2	1:B:714:GLN:HA	2.52	0.45
1:B:718:GLN:NE2	1:B:718:GLN:HA	2.31	0.45
1:A:486:VAL:HG13	1:A:487:ASN:N	2.32	0.45
1:A:69:LEU:HD13	1:A:107:ILE:HD12	1.98	0.45
1:B:75:ASN:HB3	1:B:92:ASN:N	2.32	0.45
1:A:92:ASN:ND2	1:A:93:SER:N	2.65	0.45
1:A:147:ARG:HA	3:A:1151:HOH:O	2.16	0.45
1:C:403:GLU:OE1	1:C:585:TYR:HA	2.17	0.45
1:B:429:ARG:NE	3:B:4044:HOH:O	2.36	0.45
1:C:110:ASP:OD2	1:C:162:HIS:ND1	2.51	0.45
1:D:393:ASP:HA	3:D:1433:HOH:O	2.16	0.45
1:A:98:PHE:CE2	1:A:100:HIS:HB2	2.52	0.45
1:C:76:ILE:CD1	1:C:90:LEU:HD11	2.37	0.44
1:B:310:ARG:NH1	1:B:329:ASP:OD1	2.50	0.44

Continued on next page...

Continued from previous page...

Atom-1	Atom-2	Interatomic distance (Å)	Clash overlap (Å)
1:A:392:LYS:HD3	3:A:1547:HOH:O	2.17	0.44
1:B:92:ASN:ND2	1:B:93:SER:N	2.64	0.44
1:D:110:ASP:OD2	1:D:162:HIS:ND1	2.50	0.44
1:C:69:LEU:HD11	1:C:107:ILE:HD12	1.96	0.44
1:C:172:ILE:N	1:C:186:THR:HG22	2.18	0.44
1:C:726:VAL:O	1:C:726:VAL:CG1	2.65	0.44
1:A:310:ARG:NH1	1:A:329:ASP:OD1	2.50	0.44
1:B:528:MET:HE3	1:B:530:LEU:HD21	1.99	0.44
1:C:522:THR:HG22	1:C:523:LYS:N	2.32	0.44
1:B:489:LYS:CB	1:B:489:LYS:NZ	2.77	0.44
1:A:481:THR:OG1	1:A:483:HIS:CE1	2.65	0.44
1:D:74:ASN:HB3	1:D:92:ASN:HB3	1.99	0.44
1:C:74:ASN:HB3	1:C:92:ASN:HB3	1.99	0.44
1:D:283:THR:HG22	1:D:285:ILE:HD12	2.00	0.44
1:A:148:ILE:HG23	1:A:149:PRO:HD2	1.99	0.44
1:D:79:PHE:CD1	1:D:86:SER:HB3	2.52	0.44
1:D:57:LEU:HD23	3:D:1030:HOH:O	2.17	0.44
1:C:726:VAL:CG1	1:C:728:VAL:HG23	2.40	0.44
1:B:651:ILE:CD1	1:B:755:MET:HE2	2.47	0.44
1:A:731:GLN:HG2	3:A:1299:HOH:O	2.17	0.44
1:D:259:ALA:HB3	1:D:660:GLU:HA	2.00	0.44
1:D:286:GLN:NE2	1:D:288:THR:HG22	2.33	0.44
1:D:74:ASN:O	1:D:92:ASN:HB3	2.18	0.44
1:C:486:VAL:HG13	1:C:487:ASN:H	1.80	0.44
1:C:159:PRO:HD3	1:C:216:TRP:CB	2.48	0.44
1:C:306:ALA:CB	1:C:310:ARG:HD2	2.47	0.44
1:D:319:ILE:O	1:D:321:ASN:N	2.36	0.44
1:C:546:VAL:CG2	1:C:547:TYR:N	2.81	0.44
1:B:482:LEU:HA	1:B:482:LEU:HD23	1.76	0.44
1:D:184:ARG:HD2	1:D:187:TRP:CE2	2.53	0.44
1:D:536:LYS:CB	1:D:536:LYS:NZ	2.81	0.44
1:B:134:ILE:HG21	1:B:178:PRO:HB3	2.00	0.44
1:D:718:GLN:NE2	1:D:718:GLN:HA	2.33	0.44
1:C:248:TYR:CZ	1:D:234:PRO:HB2	2.53	0.44
1:B:60:LEU:C	1:B:60:LEU:HD12	2.38	0.44
1:A:413:ASP:HB2	3:A:1644:HOH:O	2.17	0.44
1:D:154:TRP:O	1:D:166:TYR:HA	2.18	0.43
1:C:483:HIS:HD2	3:C:1070:HOH:O	2.01	0.43
1:C:425:MET:HA	1:C:426:PRO:HD2	1.77	0.43
1:B:761:GLN:HB3	1:B:761:GLN:HE21	1.60	0.43
1:A:134:ILE:HG21	1:A:178:PRO:HB3	1.99	0.43

Continued on next page...

Continued from previous page...

Atom-1	Atom-2	Interatomic distance (Å)	Clash overlap (Å)
1:A:173:TYR:CE2	1:A:184:ARG:HG3	2.53	0.43
1:D:40:ARG:HD2	1:D:508:GLN:HG3	2.00	0.43
1:C:596:ARG:O	1:C:597:ARG:HD3	2.18	0.43
1:C:283:THR:HG22	1:C:285:ILE:HD12	1.99	0.43
1:D:718:GLN:HE21	1:D:718:GLN:HA	1.82	0.43
1:C:183:TYR:CE2	1:C:276:LEU:HG	2.54	0.43
1:A:440:THR:HG21	3:A:1678:HOH:O	2.17	0.43
1:A:74:ASN:O	1:A:92:ASN:HB3	2.17	0.43
1:A:176:ILE:HG22	1:A:177:GLU:HG2	2.00	0.43
1:B:205:GLU:OE2	2:B:4000:DLI:N22	2.51	0.43
1:C:649:CYS:HB3	1:C:699:GLU:HB2	2.00	0.43
1:D:615:LYS:HG2	3:D:1209:HOH:O	2.19	0.43
1:A:76:ILE:CD1	1:A:90:LEU:HD11	2.42	0.43
1:A:40:ARG:HB2	1:A:41:LYS:H	1.55	0.43
1:C:184:ARG:HD2	1:C:187:TRP:CE2	2.53	0.43
1:C:516:PHE:CE2	1:C:523:LYS:HE2	2.54	0.43
1:B:107:ILE:HG12	1:B:114:ILE:HG12	2.00	0.43
1:B:726:VAL:HG13	1:B:726:VAL:O	2.18	0.43
1:C:40:ARG:HH11	1:C:40:ARG:CG	2.28	0.43
1:C:154:TRP:O	1:C:166:TYR:HA	2.18	0.43
1:C:498:SER:O	1:C:502:LYS:HG2	2.18	0.43
1:C:693:GLU:HG2	3:C:1444:HOH:O	2.19	0.43
1:B:612:GLN:HB3	1:B:612:GLN:HE21	1.59	0.43
1:D:696:LYS:CG	1:D:728:VAL:HG22	2.49	0.43
1:A:532:PRO:HD3	1:A:569:SER:HA	1.99	0.43
1:D:649:CYS:HB3	1:D:699:GLU:HB2	2.00	0.43
1:B:291:ALA:O	1:B:295:ILE:HG23	2.18	0.43
1:B:76:ILE:CD1	1:B:90:LEU:HD11	2.42	0.43
1:D:422:TYR:CZ	1:D:423:LYS:HE3	2.54	0.43
1:D:159:PRO:HD3	1:D:216:TRP:CB	2.48	0.43
1:B:125:ARG:HG2	1:B:126:HIS:CD2	2.54	0.43
1:B:74:ASN:O	1:B:92:ASN:HB3	2.17	0.43
1:C:422:TYR:CZ	1:C:423:LYS:HE3	2.54	0.43
1:C:438:ASP:OD2	1:C:440:THR:HG22	2.19	0.43
1:D:125:ARG:HG2	1:D:126:HIS:CD2	2.54	0.43
1:C:622:LYS:HZ2	1:C:622:LYS:HB2	1.84	0.43
1:D:75:ASN:ND2	3:D:974:HOH:O	2.52	0.43
1:D:696:LYS:HG3	1:D:728:VAL:HG22	2.00	0.43
1:D:147:ARG:HG2	1:D:147:ARG:HH11	1.82	0.43
1:C:40:ARG:HE	1:C:508:GLN:HG2	1.84	0.43
1:B:176:ILE:HG22	1:B:177:GLU:HG2	2.00	0.43

Continued on next page...

Continued from previous page...

Atom-1	Atom-2	Interatomic distance (Å)	Clash overlap (Å)
1:B:108:SER:C	1:B:110:ASP:H	2.22	0.43
1:B:148:ILE:HG23	1:B:149:PRO:HD2	1.99	0.43
1:B:62:TRP:CE3	1:B:68:TYR:HB3	2.54	0.43
1:C:289:ALA:HA	1:C:294:LEU:CD1	2.49	0.43
1:A:107:ILE:HG12	1:A:114:ILE:HG12	2.00	0.43
1:B:74:ASN:HB3	1:B:92:ASN:CB	2.49	0.43
1:C:40:ARG:HD2	1:C:508:GLN:HG3	2.00	0.43
1:C:147:ARG:HG2	1:C:147:ARG:HH11	1.84	0.43
1:D:546:VAL:HG22	1:D:547:TYR:N	2.33	0.43
1:D:531:PRO:HB3	1:D:572:ASN:HD22	1.84	0.43
1:A:237:GLU:HA	1:A:252:VAL:O	2.19	0.43
1:A:60:LEU:HD12	1:A:60:LEU:C	2.40	0.43
1:B:289:ALA:HB2	3:B:4251:HOH:O	2.18	0.42
1:A:172:ILE:N	1:A:186:THR:HG22	2.21	0.42
1:C:696:LYS:CG	1:C:728:VAL:HG22	2.49	0.42
1:B:377:ASN:HB2	1:B:381:TYR:H	1.84	0.42
1:C:74:ASN:O	1:C:92:ASN:HB3	2.18	0.42
1:B:325:MET:HE2	1:B:327:ILE:HG12	2.01	0.42
1:D:425:MET:HA	1:D:426:PRO:HD2	1.78	0.42
1:D:314:GLN:HE22	1:D:373:LYS:NZ	2.17	0.42
1:A:177:GLU:CG	1:A:180:LEU:HD22	2.49	0.42
1:A:704:HIS:CE1	1:A:711:VAL:O	2.72	0.42
1:A:325:MET:O	1:A:344:GLN:HA	2.19	0.42
1:A:341:VAL:C	1:A:343:ARG:H	2.23	0.42
1:D:438:ASP:OD2	1:D:440:THR:HG22	2.19	0.42
1:C:453:ARG:HG3	1:C:476:GLY:HA3	2.02	0.42
1:D:459:VAL:HG22	1:D:460:SER:N	2.34	0.42
1:A:82:GLU:HG2	1:A:83:TYR:CZ	2.55	0.42
1:D:64:SER:O	1:D:463:LYS:HG2	2.19	0.42
1:D:289:ALA:HA	1:D:294:LEU:CD1	2.49	0.42
1:A:92:ASN:HD22	1:A:93:SER:N	2.18	0.42
1:B:528:MET:HE1	1:B:618:PHE:CE1	2.55	0.42
1:D:502:LYS:HD3	3:D:1160:HOH:O	2.18	0.42
1:A:325:MET:HE1	1:A:327:ILE:HD11	2.01	0.42
1:A:332:GLU:HB2	3:A:901:HOH:O	2.19	0.42
1:B:506:ASN:ND2	3:B:4532:HOH:O	2.52	0.42
1:B:197:GLY:C	1:B:213:ALA:HB3	2.40	0.42
1:C:696:LYS:HG3	1:C:728:VAL:HG22	2.00	0.42
1:A:693:GLU:HB2	3:A:975:HOH:O	2.18	0.42
1:B:92:ASN:HD22	1:B:93:SER:N	2.18	0.42
1:D:108:SER:C	1:D:110:ASP:N	2.73	0.42

Continued on next page...

Continued from previous page...

Atom-1	Atom-2	Interatomic distance (Å)	Clash overlap (Å)
1:D:276:LEU:HD22	1:D:276:LEU:N	2.22	0.42
1:D:40:ARG:CG	1:D:40:ARG:NH1	2.83	0.42
1:D:40:ARG:HE	1:D:508:GLN:HG2	1.84	0.42
1:B:159:PRO:HB2	1:B:218:PRO:O	2.20	0.42
1:B:177:GLU:CG	1:B:180:LEU:HD22	2.49	0.42
1:A:156:THR:CG2	1:A:214:LEU:HD11	2.50	0.42
1:B:82:GLU:HG2	1:B:83:TYR:CZ	2.55	0.42
1:D:292:SER:HA	3:D:1237:HOH:O	2.19	0.42
1:A:536:LYS:CB	1:A:536:LYS:NZ	2.83	0.42
1:C:253:ARG:NH1	3:C:1509:HOH:O	2.34	0.42
1:D:114:ILE:HD12	1:D:137:LEU:HD21	2.01	0.42
1:C:57:LEU:HB3	3:C:960:HOH:O	2.18	0.42
1:D:147:ARG:HB2	3:D:975:HOH:O	2.19	0.42
1:A:581:ARG:HG2	1:A:593:ALA:HB1	2.02	0.42
1:C:110:ASP:HB3	1:C:112:GLN:HB2	2.01	0.42
1:A:197:GLY:C	1:A:213:ALA:HB3	2.40	0.42
1:C:259:ALA:HB3	1:C:660:GLU:HA	2.01	0.42
1:B:172:ILE:H	1:B:186:THR:CG2	2.21	0.42
1:A:658:ARG:NH1	3:A:965:HOH:O	2.50	0.42
1:B:519:LEU:O	1:B:520:ASN:C	2.58	0.42
1:C:125:ARG:HG2	1:C:126:HIS:CD2	2.55	0.42
1:D:382:ARG:NH2	3:D:766:HOH:O	2.51	0.42
1:D:148:ILE:CG2	1:D:149:PRO:HD2	2.49	0.42
1:C:236:ILE:HG12	1:C:712:HIS:CE1	2.55	0.42
1:D:111:GLY:O	1:D:137:LEU:HD12	2.19	0.42
1:C:532:PRO:HD3	1:C:569:SER:HA	2.02	0.42
1:D:489:LYS:CB	1:D:489:LYS:NZ	2.82	0.42
1:C:658:ARG:HD2	1:C:661:TYR:CE1	2.55	0.42
1:C:523:LYS:HG2	3:C:808:HOH:O	2.19	0.42
1:A:333:SER:HB2	3:A:1026:HOH:O	2.19	0.42
1:C:98:PHE:CE2	1:C:100:HIS:HB2	2.55	0.42
1:D:98:PHE:CE2	1:D:100:HIS:HB2	2.55	0.42
1:A:184:ARG:HD2	1:A:187:TRP:CD2	2.55	0.42
1:A:187:TRP:N	1:A:187:TRP:CD1	2.88	0.42
1:C:530:LEU:HA	1:C:531:PRO:HD3	1.84	0.42
1:B:109:PRO:HA	3:B:4766:HOH:O	2.19	0.42
1:D:40:ARG:HD3	1:D:507:VAL:C	2.40	0.42
1:D:704:HIS:CE1	1:D:711:VAL:O	2.72	0.42
1:B:85:ASN:ND2	3:B:4276:HOH:O	2.52	0.42
1:D:520:ASN:ND2	1:D:520:ASN:O	2.53	0.42
1:A:435:GLN:NE2	1:A:441:LYS:CD	2.83	0.42

Continued on next page...

Continued from previous page...

Atom-1	Atom-2	Interatomic distance (Å)	Clash overlap (Å)
1:C:95:PHE:HB3	1:C:98:PHE:HB2	2.02	0.42
1:D:562:ASN:HB2	3:D:913:HOH:O	2.19	0.42
1:A:62:TRP:CE3	1:A:68:TYR:HB3	2.55	0.42
1:C:64:SER:O	1:C:463:LYS:HG2	2.19	0.42
1:D:65:ASP:CG	1:D:464:GLU:HB2	2.40	0.41
1:C:520:ASN:O	1:C:520:ASN:ND2	2.52	0.41
1:C:597:ARG:HA	1:C:597:ARG:HD3	1.63	0.41
1:A:512:LYS:HD3	3:A:1141:HOH:O	2.19	0.41
1:A:248:TYR:CE1	1:B:258:LYS:HD2	2.55	0.41
1:A:546:VAL:HG22	1:A:547:TYR:N	2.35	0.41
1:C:152:THR:HG21	1:C:155:VAL:CG2	2.50	0.41
1:B:546:VAL:HG22	1:B:547:TYR:N	2.35	0.41
1:B:187:TRP:CD1	1:B:187:TRP:N	2.88	0.41
1:C:531:PRO:HB3	1:C:572:ASN:HD22	1.84	0.41
1:C:40:ARG:HD3	1:C:507:VAL:C	2.40	0.41
1:C:489:LYS:CB	1:C:489:LYS:NZ	2.82	0.41
1:B:183:TYR:CE1	1:B:277:SER:O	2.72	0.41
1:D:95:PHE:HB3	1:D:98:PHE:HB2	2.02	0.41
1:D:137:LEU:HD23	1:D:137:LEU:HA	1.84	0.41
1:A:718:GLN:HA	1:A:718:GLN:NE2	2.33	0.41
1:B:40:ARG:HB2	1:B:41:LYS:H	1.56	0.41
1:C:734:TRP:CD1	1:C:736:THR:HG22	2.55	0.41
1:C:370:SER:HB3	1:C:388:GLN:NE2	2.35	0.41
1:C:108:SER:C	1:C:110:ASP:N	2.72	0.41
1:D:442:VAL:O	1:D:442:VAL:HG13	2.20	0.41
1:B:246:LEU:HD23	1:B:246:LEU:HA	1.87	0.41
1:B:137:LEU:O	1:B:140:ARG:NH1	2.54	0.41
1:C:704:HIS:CE1	1:C:711:VAL:O	2.73	0.41
1:D:110:ASP:HB3	1:D:112:GLN:HB2	2.03	0.41
1:D:579:ASP:HB3	1:D:583:SER:OG	2.20	0.41
1:C:561:LEU:HA	1:C:561:LEU:HD12	1.92	0.41
1:B:536:LYS:HB3	1:B:536:LYS:HZ3	1.84	0.41
1:C:76:ILE:HB	1:C:90:LEU:HD13	2.00	0.41
1:D:532:PRO:HD3	1:D:569:SER:HA	2.01	0.41
1:B:156:THR:CG2	1:B:214:LEU:HD11	2.50	0.41
1:D:571:GLU:CD	1:D:760:LYS:HD3	2.40	0.41
1:C:148:ILE:CG2	1:C:149:PRO:HD2	2.50	0.41
1:D:152:THR:HG21	1:D:155:VAL:CG2	2.50	0.41
1:B:269:PHE:CE2	1:B:286:GLN:HB2	2.56	0.41
1:D:734:TRP:CD1	1:D:736:THR:HG22	2.55	0.41
1:B:242:SER:OG	1:B:243:ASP:N	2.51	0.41

Continued on next page...

Continued from previous page...

Atom-1	Atom-2	Interatomic distance (Å)	Clash overlap (Å)
1:C:334:SER:CB	1:C:336:ARG:HD2	2.49	0.41
1:A:137:LEU:O	1:A:140:ARG:NH1	2.53	0.41
1:A:597:ARG:HD2	1:A:597:ARG:HA	1.94	0.41
1:A:519:LEU:O	1:A:520:ASN:C	2.59	0.41
1:D:520:ASN:O	1:D:521:GLU:CB	2.68	0.41
1:A:325:MET:HE2	1:A:327:ILE:HG12	2.01	0.41
1:A:726:VAL:HG13	1:A:726:VAL:O	2.20	0.41
1:B:341:VAL:C	1:B:343:ARG:H	2.23	0.41
1:D:341:VAL:C	1:D:343:ARG:N	2.74	0.41
1:B:536:LYS:CB	1:B:536:LYS:NZ	2.83	0.41
1:B:184:ARG:HD2	1:B:187:TRP:CD2	2.56	0.41
1:D:331:ASP:CB	1:D:334:SER:HB2	2.49	0.41
1:B:69:LEU:CD1	1:B:107:ILE:HD12	2.51	0.41
1:C:361:GLU:HG2	3:C:882:HOH:O	2.20	0.41
1:A:74:ASN:HB3	1:A:92:ASN:CB	2.50	0.41
1:C:504:LEU:O	1:C:507:VAL:HG13	2.21	0.41
1:B:214:LEU:HD12	1:B:214:LEU:O	2.20	0.41
1:A:183:TYR:CE1	1:A:277:SER:O	2.73	0.41
1:D:505:GLN:HE21	1:D:505:GLN:HB3	1.59	0.41
1:D:91:GLU:HA	3:D:974:HOH:O	2.20	0.41
1:A:120:TYR:OH	1:A:122:LYS:HB2	2.21	0.41
1:B:387:PHE:CD2	1:B:394:CYS:HB3	2.56	0.41
1:A:691:ARG:NE	3:A:1580:HOH:O	2.27	0.41
1:D:504:LEU:O	1:D:507:VAL:HG13	2.21	0.41
1:B:176:ILE:HD11	1:B:276:LEU:HD21	2.02	0.41
1:C:544:LEU:HD21	1:C:606:GLN:HG3	2.03	0.41
1:D:513:LYS:O	1:D:527:GLN:HA	2.21	0.41
1:D:453:ARG:HG3	1:D:476:GLY:HA3	2.03	0.41
1:A:528:MET:HE3	1:A:530:LEU:HD21	2.00	0.40
1:A:269:PHE:CE2	1:A:286:GLN:HB2	2.56	0.40
1:C:442:VAL:O	1:C:442:VAL:HG13	2.21	0.40
1:C:65:ASP:CG	1:C:464:GLU:HB2	2.41	0.40
1:A:136:ASP:CG	1:A:139:LYS:HG2	2.42	0.40
1:D:516:PHE:CE2	1:D:523:LYS:HE2	2.56	0.40
1:C:513:LYS:O	1:C:527:GLN:HA	2.20	0.40
1:A:708:ASP:OD2	1:A:740:HIS:HA	2.21	0.40
1:A:291:ALA:O	1:A:295:ILE:HG23	2.21	0.40
1:B:708:ASP:OD2	1:B:740:HIS:HA	2.21	0.40
1:C:459:VAL:HG22	1:C:460:SER:N	2.36	0.40
1:D:474:GLY:HA3	1:D:557:THR:O	2.21	0.40
1:C:579:ASP:HB3	1:C:583:SER:OG	2.21	0.40

Continued on next page...

Continued from previous page...

Atom-1	Atom-2	Interatomic distance (Å)	Clash overlap (Å)
1:A:159:PRO:HB2	1:A:218:PRO:O	2.21	0.40
1:A:528:MET:HE1	1:A:618:PHE:CE1	2.56	0.40
1:C:546:VAL:HG22	1:C:547:TYR:N	2.36	0.40
1:A:614:SER:HB2	1:A:621:ASN:HB3	2.04	0.40
1:C:244:GLU:CD	1:D:689:MET:HG3	2.42	0.40
1:C:146:GLU:O	1:C:175:LYS:HE2	2.22	0.40
1:D:482:LEU:HD23	1:D:482:LEU:HA	1.91	0.40
1:A:319:ILE:HB	3:A:1427:HOH:O	2.20	0.40
1:D:334:SER:CB	1:D:336:ARG:HD2	2.48	0.40
1:C:520:ASN:O	1:C:521:GLU:CB	2.69	0.40
1:A:203:TYR:HA	1:A:207:VAL:CG1	2.51	0.40
1:C:402:TRP:HA	3:C:805:HOH:O	2.21	0.40
1:D:463:LYS:HD3	1:D:463:LYS:HA	1.85	0.40
1:B:237:GLU:HA	1:B:252:VAL:O	2.21	0.40
1:D:195:TYR:O	1:D:227:GLN:HA	2.22	0.40
1:D:544:LEU:HD21	1:D:606:GLN:HG3	2.03	0.40
1:C:718:GLN:HE21	1:C:718:GLN:HA	1.86	0.40
1:A:172:ILE:H	1:A:186:THR:CG2	2.23	0.40
1:A:114:ILE:HG13	1:A:137:LEU:HD11	2.04	0.40
1:D:388:GLN:CB	1:D:391:LYS:HB2	2.52	0.40
1:D:658:ARG:HD2	1:D:661:TYR:CE1	2.56	0.40
1:C:718:GLN:NE2	1:C:718:GLN:HA	2.36	0.40
1:A:150:ASN:O	1:A:151:ASN:HB2	2.21	0.40
1:C:685:ASN:ND2	3:C:1440:HOH:O	2.55	0.40

There are no symmetry-related clashes.

5.3 Torsion angles [i](#)

5.3.1 Protein backbone [i](#)

In the following table, the Percentiles column shows the percent Ramachandran outliers of the chain as a percentile score with respect to all X-ray entries followed by that with respect to entries of similar resolution.

The Analysed column shows the number of residues for which the backbone conformation was analysed, and the total number of residues.

Mol	Chain	Analysed	Favoured	Allowed	Outliers	Percentiles
1	A	724/726 (100%)	668 (92%)	49 (7%)	7 (1%)	19 21

Continued on next page...

Continued from previous page...

Mol	Chain	Analysed	Favoured	Allowed	Outliers	Percentiles	
1	B	724/726 (100%)	667 (92%)	50 (7%)	7 (1%)	19	21
1	C	724/726 (100%)	672 (93%)	45 (6%)	7 (1%)	19	21
1	D	724/726 (100%)	671 (93%)	46 (6%)	7 (1%)	19	21
All	All	2896/2904 (100%)	2678 (92%)	190 (7%)	28 (1%)	19	21

All (28) Ramachandran outliers are listed below:

Mol	Chain	Res	Type
1	A	40	ARG
1	A	278	SER
1	B	40	ARG
1	B	278	SER
1	C	40	ARG
1	C	278	SER
1	C	320	GLN
1	D	40	ARG
1	D	278	SER
1	D	320	GLN
1	A	161	GLY
1	A	289	ALA
1	A	520	ASN
1	B	161	GLY
1	B	289	ALA
1	B	520	ASN
1	C	289	ALA
1	C	520	ASN
1	D	289	ALA
1	D	520	ASN
1	A	320	GLN
1	B	320	GLN
1	C	334	SER
1	D	334	SER
1	A	277	SER
1	B	277	SER
1	D	389	ILE
1	C	389	ILE

5.3.2 Protein sidechains [i](#)

In the following table, the Percentiles column shows the percent sidechain outliers of the chain as a percentile score with respect to all X-ray entries followed by that with respect to entries of similar

resolution.

The Analysed column shows the number of residues for which the sidechain conformation was analysed, and the total number of residues.

Mol	Chain	Analysed	Rotameric	Outliers	Percentiles	
1	A	651/651 (100%)	604 (93%)	47 (7%)	18	22
1	B	651/651 (100%)	601 (92%)	50 (8%)	16	20
1	C	651/651 (100%)	605 (93%)	46 (7%)	18	23
1	D	651/651 (100%)	604 (93%)	47 (7%)	18	22
All	All	2604/2604 (100%)	2414 (93%)	190 (7%)	17	22

All (190) residues with a non-rotameric sidechain are listed below:

Mol	Chain	Res	Type
1	A	40	ARG
1	A	41	LYS
1	A	51	ASN
1	A	66	HIS
1	A	73	GLU
1	A	90	LEU
1	A	91	GLU
1	A	92	ASN
1	A	110	ASP
1	A	125	ARG
1	A	140	ARG
1	A	141	GLN
1	A	170	ASN
1	A	184	ARG
1	A	207	VAL
1	A	246	LEU
1	A	253	ARG
1	A	254	VAL
1	A	272	ASN
1	A	276	LEU
1	A	303	VAL
1	A	336	ARG
1	A	385	CYS
1	A	388	GLN
1	A	413	ASP
1	A	436	LEU
1	A	440	THR
1	A	442	VAL

Continued on next page...

Continued from previous page...

Mol	Chain	Res	Type
1	A	448	GLU
1	A	482	LEU
1	A	514	LEU
1	A	520	ASN
1	A	523	LYS
1	A	536	LYS
1	A	543	LEU
1	A	561	LEU
1	A	581	ARG
1	A	597	ARG
1	A	603	VAL
1	A	658	ARG
1	A	673	LEU
1	A	679	ASN
1	A	689	MET
1	A	701	LEU
1	A	702	LEU
1	A	726	VAL
1	A	761	GLN
1	B	40	ARG
1	B	41	LYS
1	B	51	ASN
1	B	61	ARG
1	B	66	HIS
1	B	73	GLU
1	B	90	LEU
1	B	91	GLU
1	B	92	ASN
1	B	110	ASP
1	B	125	ARG
1	B	140	ARG
1	B	141	GLN
1	B	170	ASN
1	B	184	ARG
1	B	207	VAL
1	B	246	LEU
1	B	253	ARG
1	B	254	VAL
1	B	272	ASN
1	B	276	LEU
1	B	303	VAL
1	B	336	ARG

Continued on next page...

Continued from previous page...

Mol	Chain	Res	Type
1	B	385	CYS
1	B	388	GLN
1	B	413	ASP
1	B	425	MET
1	B	436	LEU
1	B	440	THR
1	B	442	VAL
1	B	448	GLU
1	B	472	CYS
1	B	482	LEU
1	B	514	LEU
1	B	520	ASN
1	B	523	LYS
1	B	536	LYS
1	B	543	LEU
1	B	561	LEU
1	B	581	ARG
1	B	597	ARG
1	B	603	VAL
1	B	658	ARG
1	B	673	LEU
1	B	679	ASN
1	B	689	MET
1	B	701	LEU
1	B	702	LEU
1	B	726	VAL
1	B	761	GLN
1	C	40	ARG
1	C	41	LYS
1	C	51	ASN
1	C	90	LEU
1	C	91	GLU
1	C	110	ASP
1	C	125	ARG
1	C	145	GLU
1	C	170	ASN
1	C	184	ARG
1	C	207	VAL
1	C	246	LEU
1	C	253	ARG
1	C	272	ASN
1	C	276	LEU

Continued on next page...

Continued from previous page...

Mol	Chain	Res	Type
1	C	293	MET
1	C	303	VAL
1	C	313	LEU
1	C	326	ASP
1	C	336	ARG
1	C	385	CYS
1	C	388	GLN
1	C	392	LYS
1	C	413	ASP
1	C	436	LEU
1	C	440	THR
1	C	448	GLU
1	C	482	LEU
1	C	507	VAL
1	C	514	LEU
1	C	523	LYS
1	C	536	LYS
1	C	543	LEU
1	C	561	LEU
1	C	566	TYR
1	C	581	ARG
1	C	597	ARG
1	C	603	VAL
1	C	658	ARG
1	C	679	ASN
1	C	689	MET
1	C	701	LEU
1	C	702	LEU
1	C	726	VAL
1	C	736	THR
1	C	761	GLN
1	D	40	ARG
1	D	41	LYS
1	D	51	ASN
1	D	90	LEU
1	D	91	GLU
1	D	110	ASP
1	D	125	ARG
1	D	145	GLU
1	D	170	ASN
1	D	184	ARG
1	D	207	VAL

Continued on next page...

Continued from previous page...

Mol	Chain	Res	Type
1	D	246	LEU
1	D	253	ARG
1	D	254	VAL
1	D	272	ASN
1	D	276	LEU
1	D	293	MET
1	D	303	VAL
1	D	313	LEU
1	D	326	ASP
1	D	336	ARG
1	D	385	CYS
1	D	388	GLN
1	D	392	LYS
1	D	413	ASP
1	D	436	LEU
1	D	440	THR
1	D	448	GLU
1	D	482	LEU
1	D	507	VAL
1	D	514	LEU
1	D	523	LYS
1	D	536	LYS
1	D	543	LEU
1	D	561	LEU
1	D	566	TYR
1	D	581	ARG
1	D	597	ARG
1	D	603	VAL
1	D	658	ARG
1	D	679	ASN
1	D	689	MET
1	D	701	LEU
1	D	702	LEU
1	D	726	VAL
1	D	736	THR
1	D	761	GLN

Some sidechains can be flipped to improve hydrogen bonding and reduce clashes. All (81) such sidechains are listed below:

Mol	Chain	Res	Type
1	A	72	GLN
1	A	123	GLN

Continued on next page...

Continued from previous page...

Mol	Chain	Res	Type
1	A	169	ASN
1	A	170	ASN
1	A	247	GLN
1	A	272	ASN
1	A	314	GLN
1	A	345	HIS
1	A	369	ASN
1	A	435	GLN
1	A	483	HIS
1	A	487	ASN
1	A	533	HIS
1	A	572	ASN
1	A	586	GLN
1	A	612	GLN
1	A	679	ASN
1	A	694	ASN
1	A	704	HIS
1	A	718	GLN
1	A	731	GLN
1	A	761	GLN
1	B	66	HIS
1	B	72	GLN
1	B	169	ASN
1	B	170	ASN
1	B	247	GLN
1	B	272	ASN
1	B	314	GLN
1	B	345	HIS
1	B	369	ASN
1	B	377	ASN
1	B	435	GLN
1	B	483	HIS
1	B	487	ASN
1	B	533	HIS
1	B	572	ASN
1	B	612	GLN
1	B	679	ASN
1	B	694	ASN
1	B	704	HIS
1	B	718	GLN
1	B	761	GLN
1	C	72	GLN

Continued on next page...

Continued from previous page...

Mol	Chain	Res	Type
1	C	169	ASN
1	C	170	ASN
1	C	247	GLN
1	C	272	ASN
1	C	314	GLN
1	C	321	ASN
1	C	369	ASN
1	C	483	HIS
1	C	487	ASN
1	C	505	GLN
1	C	572	ASN
1	C	612	GLN
1	C	679	ASN
1	C	685	ASN
1	C	694	ASN
1	C	704	HIS
1	C	718	GLN
1	C	761	GLN
1	D	72	GLN
1	D	169	ASN
1	D	170	ASN
1	D	247	GLN
1	D	272	ASN
1	D	314	GLN
1	D	369	ASN
1	D	388	GLN
1	D	483	HIS
1	D	487	ASN
1	D	505	GLN
1	D	572	ASN
1	D	606	GLN
1	D	612	GLN
1	D	679	ASN
1	D	694	ASN
1	D	704	HIS
1	D	718	GLN
1	D	761	GLN

5.3.3 RNA ⓘ

There are no RNA molecules in this entry.

5.4 Non-standard residues in protein, DNA, RNA chains [i](#)

There are no non-standard protein/DNA/RNA residues in this entry.

5.5 Carbohydrates [i](#)

There are no carbohydrates in this entry.

5.6 Ligand geometry [i](#)

1 ligand is modelled in this entry.

In the following table, the Counts columns list the number of bonds (or angles) for which Mogul statistics could be retrieved, the number of bonds (or angles) that are observed in the model and the number of bonds (or angles) that are defined in the chemical component dictionary. The Link column lists molecule types, if any, to which the group is linked. The Z score for a bond length (or angle) is the number of standard deviations the observed value is removed from the expected value. A bond length (or angle) with $|Z| > 2$ is considered an outlier worth inspection. RMSZ is the root-mean-square of all Z scores of the bond lengths (or angles).

Mol	Type	Chain	Res	Link	Bond lengths			Bond angles		
					Counts	RMSZ	$\# Z > 2$	Counts	RMSZ	$\# Z > 2$
2	DLI	B	4000	-	34,34,34	1.58	9 (26%)	45,51,51	2.09	17 (37%)

In the following table, the Chirals column lists the number of chiral outliers, the number of chiral centers analysed, the number of these observed in the model and the number defined in the chemical component dictionary. Similar counts are reported in the Torsion and Rings columns. '-' means no outliers of that kind were identified.

Mol	Type	Chain	Res	Link	Chirals	Torsions	Rings
2	DLI	B	4000	-	-	0/18/30/30	0/4/4/4

All (9) bond length outliers are listed below:

Mol	Chain	Res	Type	Atoms	Z	Observed(Å)	Ideal(Å)
2	B	4000	DLI	C8-C7	-2.98	1.49	1.53
2	B	4000	DLI	C25-C26	2.03	1.42	1.38
2	B	4000	DLI	C21-C19	2.05	1.52	1.48
2	B	4000	DLI	C23-C21	2.05	1.43	1.39
2	B	4000	DLI	C2-C1	2.12	1.41	1.37
2	B	4000	DLI	C3-C4	2.60	1.42	1.38
2	B	4000	DLI	C19-N18	2.87	1.41	1.35
2	B	4000	DLI	C5-C4	2.95	1.42	1.37

Continued on next page...

Continued from previous page...

Mol	Chain	Res	Type	Atoms	Z	Observed(Å)	Ideal(Å)
2	B	4000	DLI	C5-C6	3.45	1.43	1.37

All (17) bond angle outliers are listed below:

Mol	Chain	Res	Type	Atoms	Z	Observed(°)	Ideal(°)
2	B	4000	DLI	C20-C19-N18	-3.73	117.11	122.02
2	B	4000	DLI	F15-C1-C2	-2.96	113.03	118.59
2	B	4000	DLI	C5-C4-C3	-2.81	120.78	123.78
2	B	4000	DLI	N18-C17-N16	-2.63	124.23	128.67
2	B	4000	DLI	C25-C26-S1	-2.49	117.15	119.59
2	B	4000	DLI	O2-S1-C26	-2.19	106.39	108.31
2	B	4000	DLI	C20-C14-N11	-2.14	119.55	122.15
2	B	4000	DLI	F10-C4-C5	2.26	122.84	118.59
2	B	4000	DLI	C17-N16-C14	2.68	116.90	114.84
2	B	4000	DLI	F15-C1-C6	2.94	126.52	118.51
2	B	4000	DLI	C27-C26-S1	2.95	122.13	119.16
2	B	4000	DLI	C2-C3-C4	3.13	120.40	116.17
2	B	4000	DLI	C17-N18-C19	3.21	120.25	115.74
2	B	4000	DLI	C8-C7-C9	3.38	109.46	103.40
2	B	4000	DLI	C19-C20-C14	4.07	119.63	116.77
2	B	4000	DLI	C10-S1-C26	4.27	109.85	104.68
2	B	4000	DLI	C8-C7-C3	5.16	122.68	114.94

There are no chirality outliers.

There are no torsion outliers.

There are no ring outliers.

1 monomer is involved in 1 short contact:

Mol	Chain	Res	Type	Clashes	Symm-Clashes
2	B	4000	DLI	1	0

5.7 Other polymers [i](#)

There are no such residues in this entry.

5.8 Polymer linkage issues [i](#)

There are no chain breaks in this entry.

6 Fit of model and data

6.1 Protein, DNA and RNA chains

In the following table, the column labelled ‘#RSRZ> 2’ contains the number (and percentage) of RSRZ outliers, followed by percent RSRZ outliers for the chain as percentile scores relative to all X-ray entries and entries of similar resolution. The OWAB column contains the minimum, median, 95th percentile and maximum values of the occupancy-weighted average B-factor per residue. The column labelled ‘Q< 0.9’ lists the number of (and percentage) of residues with an average occupancy less than 0.9.

Mol	Chain	Analysed	<RSRZ>	#RSRZ>2		OWAB(Å ²)	Q<0.9
1	A	726/726 (100%)	0.27	31 (4%)	39 48	15, 30, 71, 158	0
1	B	726/726 (100%)	0.53	71 (9%)	10 14	16, 31, 77, 132	0
1	C	726/726 (100%)	0.35	63 (8%)	13 18	16, 36, 82, 149	0
1	D	726/726 (100%)	0.35	56 (7%)	16 23	18, 35, 81, 135	0
All	All	2904/2904 (100%)	0.38	221 (7%)	17 24	15, 33, 79, 158	0

All (221) RSRZ outliers are listed below:

Mol	Chain	Res	Type	RSRZ
1	A	279	VAL	15.7
1	A	280	THR	15.2
1	A	277	SER	14.4
1	D	39	SER	11.8
1	A	282	ALA	11.5
1	C	39	SER	10.5
1	A	74	ASN	10.2
1	A	278	SER	9.1
1	B	39	SER	9.0
1	C	73	GLU	7.7
1	A	39	SER	7.3
1	B	73	GLU	7.0
1	C	105	TYR	6.8
1	B	71	LYS	6.6
1	A	281	ASN	6.6
1	D	99	GLY	6.2
1	C	98	PHE	6.1
1	C	92	ASN	6.0
1	D	93	SER	5.8
1	D	88	VAL	5.8
1	B	105	TYR	5.8

Continued on next page...

Continued from previous page...

Mol	Chain	Res	Type	RSRZ
1	B	89	PHE	5.8
1	C	138	ASN	5.7
1	C	71	LYS	5.6
1	A	73	GLU	5.6
1	B	90	LEU	5.4
1	B	40	ARG	5.3
1	B	91	GLU	5.3
1	D	98	PHE	5.3
1	B	96	ASP	5.2
1	D	71	LYS	5.1
1	C	88	VAL	5.0
1	A	276	LEU	4.9
1	D	97	GLU	4.7
1	B	280	THR	4.7
1	B	95	PHE	4.7
1	B	98	PHE	4.6
1	B	93	SER	4.5
1	B	74	ASN	4.5
1	C	95	PHE	4.5
1	B	111	GLY	4.5
1	D	96	ASP	4.5
1	B	277	SER	4.5
1	C	140	ARG	4.4
1	D	89	PHE	4.4
1	C	100	HIS	4.3
1	D	278	SER	4.3
1	D	91	GLU	4.3
1	C	89	PHE	4.3
1	A	333	SER	4.3
1	B	341	VAL	4.3
1	C	277	SER	4.2
1	D	72	GLN	4.2
1	C	94	THR	4.2
1	D	92	ASN	4.2
1	C	391	LYS	4.2
1	D	73	GLU	4.2
1	B	75	ASN	4.2
1	C	74	ASN	4.2
1	D	83	TYR	4.2
1	C	141	GLN	4.1
1	D	289	ALA	4.1
1	C	96	ASP	4.1

Continued on next page...

Continued from previous page...

Mol	Chain	Res	Type	RSRZ
1	A	40	ARG	4.0
1	B	92	ASN	4.0
1	C	142	LEU	4.0
1	B	72	GLN	4.0
1	D	141	GLN	3.9
1	D	74	ASN	3.9
1	C	90	LEU	3.9
1	B	76	ILE	3.9
1	B	97	GLU	3.8
1	B	94	THR	3.8
1	D	86	SER	3.8
1	C	502	LYS	3.8
1	C	137	LEU	3.7
1	D	279	VAL	3.7
1	D	336	ARG	3.7
1	D	342	ALA	3.7
1	B	278	SER	3.6
1	C	40	ARG	3.6
1	C	289	ALA	3.6
1	C	506	ASN	3.5
1	B	139	LYS	3.5
1	C	72	GLN	3.5
1	B	489	LYS	3.5
1	D	87	SER	3.5
1	B	281	ASN	3.5
1	A	90	LEU	3.4
1	C	139	LYS	3.4
1	A	72	GLN	3.4
1	D	40	ARG	3.3
1	D	90	LEU	3.3
1	D	276	LEU	3.3
1	C	102	ILE	3.3
1	C	91	GLU	3.3
1	C	333	SER	3.2
1	C	75	ASN	3.2
1	B	102	ILE	3.2
1	C	505	GLN	3.1
1	B	88	VAL	3.1
1	D	139	LYS	3.1
1	B	282	ALA	3.1
1	D	333	SER	3.1
1	C	336	ARG	3.1

Continued on next page...

Continued from previous page...

Mol	Chain	Res	Type	RSRZ
1	D	76	ILE	3.0
1	B	140	ARG	3.0
1	B	332	GLU	3.0
1	A	505	GLN	3.0
1	D	335	GLY	3.0
1	C	114	ILE	3.0
1	D	281	ASN	2.9
1	B	78	VAL	2.9
1	C	93	SER	2.9
1	D	105	TYR	2.9
1	D	94	THR	2.9
1	A	92	ASN	2.8
1	C	537	SER	2.8
1	B	83	TYR	2.8
1	D	77	LEU	2.8
1	B	342	ALA	2.8
1	C	99	GLY	2.8
1	B	77	LEU	2.8
1	D	85	ASN	2.8
1	C	392	LYS	2.8
1	C	143	ILE	2.7
1	A	342	ALA	2.7
1	C	390	ASP	2.7
1	B	279	VAL	2.7
1	C	81	ALA	2.7
1	D	334	SER	2.7
1	A	98	PHE	2.7
1	C	147	ARG	2.7
1	B	138	ASN	2.6
1	D	137	LEU	2.6
1	C	97	GLU	2.6
1	C	135	TYR	2.6
1	B	160	VAL	2.6
1	D	79	PHE	2.6
1	D	61	ARG	2.6
1	C	500	LEU	2.6
1	B	70	TYR	2.6
1	D	100	HIS	2.5
1	A	502	LYS	2.5
1	B	66	HIS	2.5
1	B	61	ARG	2.5
1	B	87	SER	2.5

Continued on next page...

Continued from previous page...

Mol	Chain	Res	Type	RSRZ
1	C	76	ILE	2.5
1	A	366	LEU	2.5
1	C	504	LEU	2.5
1	A	506	ASN	2.5
1	B	506	ASN	2.4
1	A	96	ASP	2.4
1	B	144	THR	2.4
1	C	144	THR	2.4
1	B	366	LEU	2.4
1	B	141	GLN	2.4
1	C	83	TYR	2.4
1	A	114	ILE	2.4
1	D	277	SER	2.4
1	B	289	ALA	2.4
1	C	340	LEU	2.4
1	B	114	ILE	2.4
1	C	101	SER	2.4
1	B	505	GLN	2.4
1	D	138	ASN	2.3
1	A	88	VAL	2.3
1	A	341	VAL	2.3
1	D	113	PHE	2.3
1	D	280	THR	2.3
1	B	99	GLY	2.3
1	D	140	ARG	2.3
1	B	442	VAL	2.3
1	D	502	LYS	2.3
1	B	86	SER	2.3
1	C	87	SER	2.3
1	D	341	VAL	2.3
1	A	94	THR	2.3
1	B	491	LEU	2.3
1	C	276	LEU	2.3
1	B	119	ASN	2.3
1	C	389	ILE	2.3
1	A	105	TYR	2.3
1	D	358	ARG	2.3
1	B	101	SER	2.3
1	D	95	PHE	2.3
1	C	538	LYS	2.3
1	B	137	LEU	2.3
1	C	507	VAL	2.2

Continued on next page...

Continued from previous page...

Mol	Chain	Res	Type	RSRZ
1	A	334	SER	2.2
1	B	330	TYR	2.2
1	A	75	ASN	2.2
1	B	502	LYS	2.2
1	D	484	SER	2.2
1	D	78	VAL	2.2
1	D	147	ARG	2.2
1	D	498	SER	2.2
1	B	499	ALA	2.2
1	B	142	LEU	2.2
1	B	100	HIS	2.2
1	B	180	LEU	2.2
1	B	41	LYS	2.1
1	B	507	VAL	2.1
1	C	118	TYR	2.1
1	B	333	SER	2.1
1	C	86	SER	2.1
1	C	146	GLU	2.1
1	A	93	SER	2.1
1	B	276	LEU	2.1
1	D	340	LEU	2.1
1	D	114	ILE	2.1
1	C	77	LEU	2.1
1	C	82	GLU	2.1
1	B	334	SER	2.1
1	B	134	ILE	2.1
1	B	69	LEU	2.0
1	B	79	PHE	2.0
1	C	367	ASP	2.0
1	A	66	HIS	2.0
1	D	66	HIS	2.0
1	C	41	LYS	2.0

6.2 Non-standard residues in protein, DNA, RNA chains [i](#)

There are no non-standard protein/DNA/RNA residues in this entry.

6.3 Carbohydrates [i](#)

There are no carbohydrates in this entry.

6.4 Ligands [i](#)

In the following table, the Atoms column lists the number of modelled atoms in the group and the number defined in the chemical component dictionary. LLDF column lists the quality of electron density of the group with respect to its neighbouring residues in protein, DNA or RNA chains. The B-factors column lists the minimum, median, 95th percentile and maximum values of B factors of atoms in the group. The column labelled 'Q< 0.9' lists the number of atoms with occupancy less than 0.9.

Mol	Type	Chain	Res	Atoms	RSCC	RSR	LLDF	B-factors(\AA^2)	Q<0.9
2	DLI	B	4000	31/31	0.92	0.29	3.88	40,40,40,40	0

6.5 Other polymers [i](#)

There are no such residues in this entry.