



Full wwPDB X-ray Structure Validation Report ⓘ

Feb 1, 2016 – 11:16 AM GMT

PDB ID : 3OB0
Title : A non-self sugar mimic of the HIV glycan shield shows enhanced antigenicity
Authors : Doores, K.J.; Fulton, Z.; Hong, V.; Patel, M.K.; Scanlan, C.N.; Wormald, M.R.; Finn, M.G.; Burton, D.R.; Wilson, I.A.; Davis, B.G
Deposited on : 2010-08-06
Resolution : 2.85 Å(reported)

This is a Full wwPDB X-ray Structure Validation Report for a publicly released PDB entry.
We welcome your comments at validation@mail.wwpdb.org
A user guide is available at
<http://wwpdb.org/validation/2016/XrayValidationReportHelp>
with specific help available everywhere you see the ⓘ symbol.

The following versions of software and data (see [references ⓘ](#)) were used in the production of this report:

MolProbity : 4.02b-467
Mogul : 1.7 (RC4), CSD as536be (2015)
Xtriage (Phenix) : 1.9-1692
EDS : rb-20026688
Percentile statistics : 20151230.v01 (using entries in the PDB archive December 30th 2015)
Refmac : 5.8.0135
CCP4 : 6.5.0
Ideal geometry (proteins) : Engh & Huber (2001)
Ideal geometry (DNA, RNA) : Parkinson et al. (1996)
Validation Pipeline (wwPDB-VP) : trunk26865

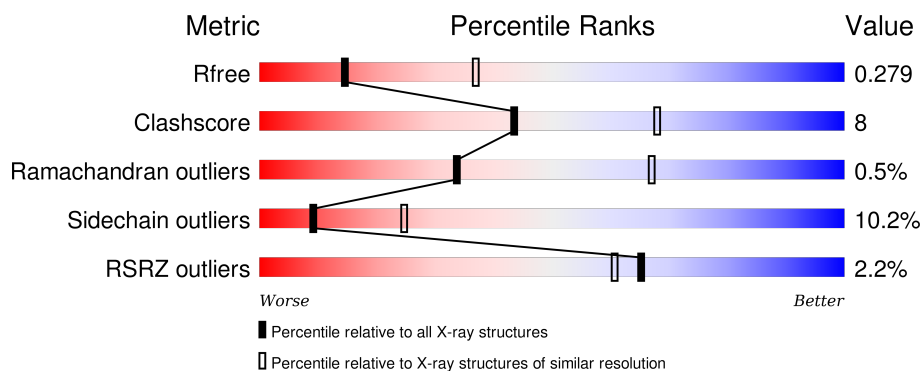
1 Overall quality at a glance

The following experimental techniques were used to determine the structure:

X-RAY DIFFRACTION

The reported resolution of this entry is 2.85 Å.

Percentile scores (ranging between 0-100) for global validation metrics of the entry are shown in the following graphic. The table shows the number of entries on which the scores are based.



Metric	Whole archive (#Entries)	Similar resolution (#Entries, resolution range(Å))
R_{free}	91344	2228 (2.90-2.82)
Clashscore	102246	2499 (2.90-2.82)
Ramachandran outliers	100387	2439 (2.90-2.82)
Sidechain outliers	100360	2442 (2.90-2.82)
RSRZ outliers	91569	2236 (2.90-2.82)

The table below summarises the geometric issues observed across the polymeric chains and their fit to the electron density. The red, orange, yellow and green segments on the lower bar indicate the fraction of residues that contain outliers for ≥ 3 , 2, 1 and 0 types of geometric quality criteria. A grey segment represents the fraction of residues that are not modelled. The numeric value for each fraction is indicated below the corresponding segment, with a dot representing fractions $\leq 5\%$. The upper red bar (where present) indicates the fraction of residues that have poor fit to the electron density. The numeric value is given above the bar.

Mol	Chain	Length	Quality of chain
1	K	213	<div> <div>2%</div> <div>82% 17% .</div> </div>
1	L	213	<div> <div>2%</div> <div>81% 18%</div> </div>
2	H	224	<div> <div>4%</div> <div>76% 20% . .</div> </div>
2	M	224	<div> <div>2%</div> <div>73% 19% 6% .</div> </div>

2 Entry composition [i](#)

There are 4 unique types of molecules in this entry. The entry contains 6635 atoms, of which 0 are hydrogens and 0 are deuteriums.

In the tables below, the ZeroOcc column contains the number of atoms modelled with zero occupancy, the AltConf column contains the number of residues with at least one atom in alternate conformation and the Trace column contains the number of residues modelled with at most 2 atoms.

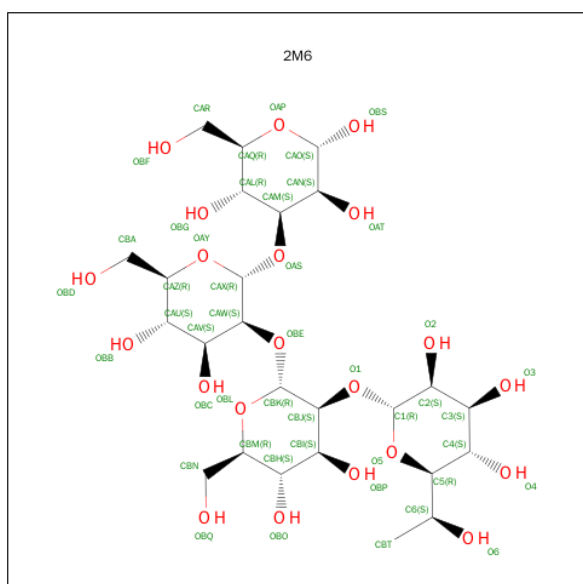
- Molecule 1 is a protein called Fab 2G12, light chain.

Mol	Chain	Residues	Atoms					ZeroOcc	AltConf	Trace
1	L	212	Total	C	N	O	S	0	0	0
			1623	1021	273	324	5			
1	K	213	Total	C	N	O	S	0	0	0
			1628	1024	274	325	5			

- Molecule 2 is a protein called Fab 2G12, heavy chain.

Mol	Chain	Residues	Atoms					ZeroOcc	AltConf	Trace
2	H	220	Total	C	N	O	S	0	0	0
			1643	1035	281	320	7			
2	M	219	Total	C	N	O	S	0	0	0
			1641	1034	280	320	7			

- Molecule 3 is 7-DEOXY-L-GLYCERO-ALPHA-D-MANNO-HEPTOPYRANOSYL-(1->2)-ALPHA-D-MANNOPYRANOSYL-(1->2)-ALPHA-D-MANNOPYRANOSYL-(1->3)-ALPHA-D-MANNOPYRANOSE (three-letter code: 2M6) (formula: C₂₅H₄₄O₂₁).



Mol	Chain	Residues	Atoms			ZeroOcc	AltConf
3	H	1	Total	C	O	0	0
			46	25	21		
3	M	1	Total	C	O	0	0
			46	25	21		

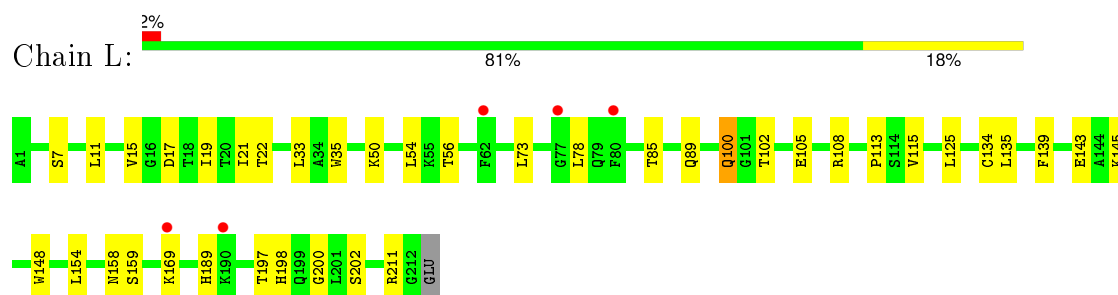
- Molecule 4 is water.

Mol	Chain	Residues	Atoms		ZeroOcc	AltConf
4	L	2	Total	O	0	0
			2	2		
4	H	1	Total	O	0	0
			1	1		
4	K	3	Total	O	0	0
			3	3		
4	M	2	Total	O	0	0
			2	2		

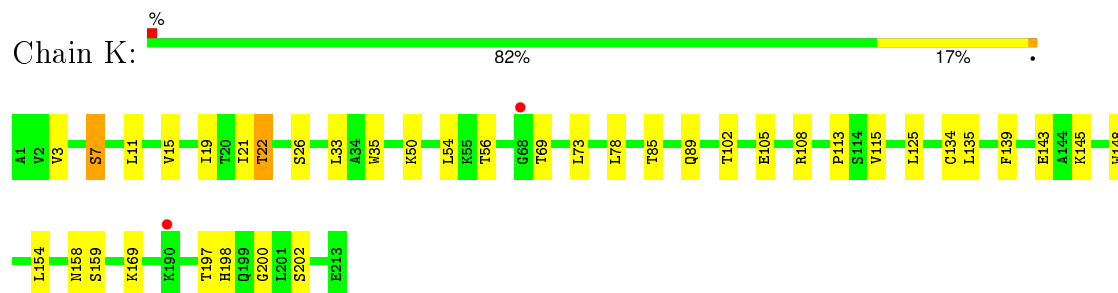
3 Residue-property plots [i](#)

These plots are drawn for all protein, RNA and DNA chains in the entry. The first graphic for a chain summarises the proportions of errors displayed in the second graphic. The second graphic shows the sequence view annotated by issues in geometry and electron density. Residues are color-coded according to the number of geometric quality criteria for which they contain at least one outlier: green = 0, yellow = 1, orange = 2 and red = 3 or more. A red dot above a residue indicates a poor fit to the electron density ($RSRZ > 2$). Stretches of 2 or more consecutive residues without any outlier are shown as a green connector. Residues present in the sample, but not in the model, are shown in grey.

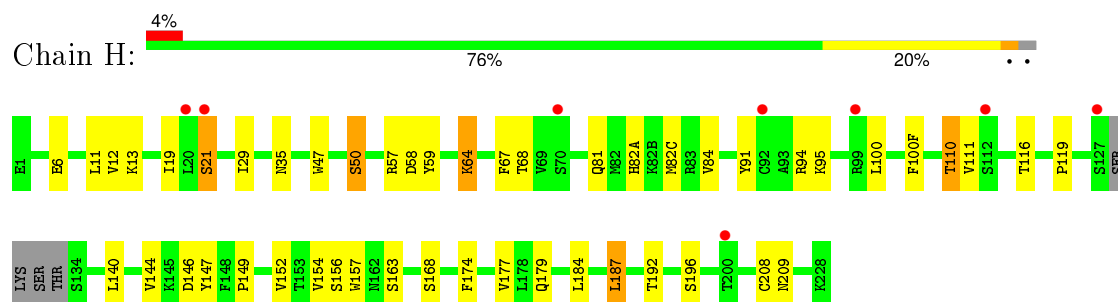
- Molecule 1: Fab 2G12, light chain



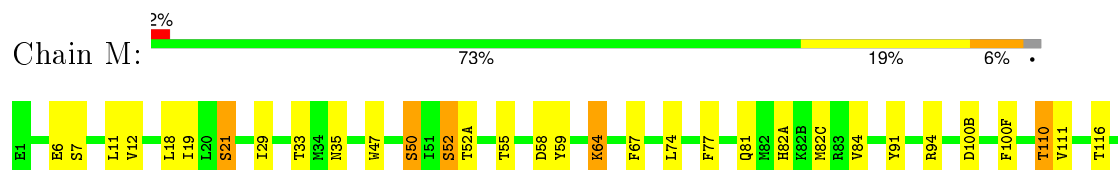
- Molecule 1: Fab 2G12, light chain

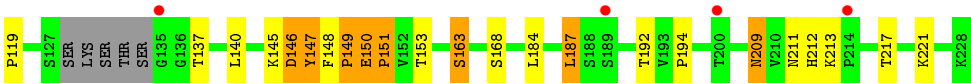


- Molecule 2: Fab 2G12, heavy chain



- Molecule 2: Fab 2G12, heavy chain





4 Data and refinement statistics

Property	Value	Source
Space group	P 21 21 21	Depositor
Cell constants a, b, c, α , β , γ	44.74Å 131.16Å 169.53Å 90.00° 90.00° 90.00°	Depositor
Resolution (Å)	30.00 – 2.85 29.96 – 2.85	Depositor EDS
% Data completeness (in resolution range)	(Not available) (30.00-2.85) 88.4 (29.96-2.85)	Depositor EDS
R_{merge}	(Not available)	Depositor
R_{sym}	(Not available)	Depositor
$\langle I/\sigma(I) \rangle$ ¹	3.28 (at 2.85Å)	Xtriage
Refinement program	BUSTER 2.8.0	Depositor
R, R_{free}	0.232 , 0.280 0.236 , 0.279	Depositor DCC
R_{free} test set	1045 reflections (5.14%)	DCC
Wilson B-factor (Å ²)	59.8	Xtriage
Anisotropy	0.826	Xtriage
Bulk solvent k_{sol} (e/Å ³), B_{sol} (Å ²)	0.31 , 45.0	EDS
Estimated twinning fraction	No twinning to report.	Xtriage
L-test for twinning ²	$\langle L \rangle = 0.50$, $\langle L^2 \rangle = 0.34$	Xtriage
Outliers	0 of 21374 reflections	Xtriage
F_o, F_c correlation	0.93	EDS
Total number of atoms	6635	wwPDB-VP
Average B, all atoms (Å ²)	79.0	wwPDB-VP

Xtriage's analysis on translational NCS is as follows: *The largest off-origin peak in the Patterson function is 4.88% of the height of the origin peak. No significant pseudotranslation is detected.*

¹Intensities estimated from amplitudes.

²Theoretical values of $\langle |L| \rangle$, $\langle L^2 \rangle$ for acentric reflections are 0.5, 0.375 respectively for untwinned datasets, and 0.333, 0.2 for perfectly twinned datasets.

5 Model quality [i](#)

5.1 Standard geometry [i](#)

Bond lengths and bond angles in the following residue types are not validated in this section: 2M6

The Z score for a bond length (or angle) is the number of standard deviations the observed value is removed from the expected value. A bond length (or angle) with $|Z| > 5$ is considered an outlier worth inspection. RMSZ is the root-mean-square of all Z scores of the bond lengths (or angles).

Mol	Chain	Bond lengths		Bond angles	
		RMSZ	$\# Z > 5$	RMSZ	$\# Z > 5$
1	K	0.43	0/1664	0.68	0/2260
1	L	0.42	0/1659	0.68	0/2253
2	H	0.48	0/1681	0.75	0/2289
2	M	0.50	0/1679	0.74	0/2286
All	All	0.46	0/6683	0.71	0/9088

There are no bond length outliers.

There are no bond angle outliers.

There are no chirality outliers.

There are no planarity outliers.

5.2 Too-close contacts [i](#)

In the following table, the Non-H and H(model) columns list the number of non-hydrogen atoms and hydrogen atoms in the chain respectively. The H(added) column lists the number of hydrogen atoms added and optimized by MolProbity. The Clashes column lists the number of clashes within the asymmetric unit, whereas Symm-Clashes lists symmetry related clashes.

Mol	Chain	Non-H	H(model)	H(added)	Clashes	Symm-Clashes
1	K	1628	0	1590	11	0
1	L	1623	0	1588	12	0
2	H	1643	0	1613	28	0
2	M	1641	0	1612	58	0
3	H	46	0	44	2	0
3	M	46	0	44	1	0
4	H	1	0	0	0	0
4	K	3	0	0	0	0
4	L	2	0	0	0	0

Continued on next page...

Continued from previous page...

Mol	Chain	Non-H	H(model)	H(added)	Clashes	Symm-Clashes
4	M	2	0	0	0	0
All	All	6635	0	6491	106	0

The all-atom clashscore is defined as the number of clashes found per 1000 atoms (including hydrogen atoms). The all-atom clashscore for this structure is 8.

All (106) close contacts within the same asymmetric unit are listed below, sorted by their clash magnitude.

Atom-1	Atom-2	Interatomic distance (Å)	Clash overlap (Å)
2:M:148:PHE:CE2	2:M:149:PRO:HB3	1.56	1.40
2:M:148:PHE:CD2	2:M:149:PRO:HB3	1.69	1.25
2:M:148:PHE:CZ	2:M:149:PRO:HB3	1.75	1.21
2:M:147:TYR:HD2	2:M:148:PHE:N	1.45	1.12
2:M:148:PHE:CZ	2:M:149:PRO:CB	2.40	1.05
2:M:148:PHE:CG	2:M:149:PRO:HB3	1.96	1.01
2:M:147:TYR:CD2	2:M:148:PHE:N	2.29	0.99
2:M:148:PHE:CE2	2:M:149:PRO:CB	2.45	0.98
2:M:148:PHE:CE1	2:M:149:PRO:CB	2.48	0.96
2:M:148:PHE:CE1	2:M:149:PRO:HB3	2.02	0.93
2:M:147:TYR:C	2:M:147:TYR:CD2	2.44	0.92
2:M:148:PHE:O	2:M:212:HIS:NE2	2.05	0.88
2:M:148:PHE:CD1	2:M:149:PRO:HB3	2.11	0.86
2:M:150:GLU:HA	2:M:150:GLU:OE1	1.75	0.83
2:M:148:PHE:CD2	2:M:149:PRO:CB	2.59	0.83
2:M:148:PHE:CD1	2:M:149:PRO:CB	2.61	0.83
2:M:148:PHE:CD1	2:M:149:PRO:HA	2.17	0.80
2:M:149:PRO:O	2:M:150:GLU:O	2.01	0.78
2:M:148:PHE:CG	2:M:149:PRO:CB	2.66	0.78
2:M:148:PHE:CD1	2:M:149:PRO:CA	2.72	0.72
2:M:148:PHE:CZ	2:M:149:PRO:HB2	2.24	0.72
2:M:148:PHE:CE1	2:M:149:PRO:HB2	2.24	0.71
2:M:148:PHE:CG	2:M:149:PRO:CA	2.73	0.71
2:M:149:PRO:O	2:M:150:GLU:C	2.28	0.70
2:M:147:TYR:HD2	2:M:148:PHE:CA	2.05	0.68
1:L:198:HIS:CD2	1:L:200:GLY:H	2.13	0.67
2:M:148:PHE:C	2:M:212:HIS:HE2	1.98	0.67
1:K:198:HIS:CD2	1:K:200:GLY:H	2.13	0.67
2:M:149:PRO:O	2:M:149:PRO:HG2	1.96	0.66
2:H:12:VAL:HG21	2:H:82(C):MET:HE3	1.78	0.65
2:M:148:PHE:O	2:M:212:HIS:CE1	2.52	0.62
2:M:147:TYR:O	2:M:148:PHE:HB2	1.99	0.61

Continued on next page...

Continued from previous page...

Atom-1	Atom-2	Interatomic distance (Å)	Clash overlap (Å)
2:M:119:PRO:HA	2:M:147:TYR:HB3	1.84	0.59
2:M:149:PRO:O	2:M:149:PRO:CG	2.51	0.59
1:L:19:ILE:HG12	1:L:78:LEU:HD11	1.87	0.57
2:H:116:THR:HG22	2:H:149:PRO:HD3	1.87	0.57
2:H:21:SER:HB3	2:M:19:ILE:HG12	1.86	0.56
1:K:19:ILE:HG12	1:K:78:LEU:HD11	1.88	0.56
2:M:145:LYS:O	2:M:147:TYR:HB3	2.05	0.55
2:M:148:PHE:CG	2:M:149:PRO:HA	2.39	0.55
2:M:11:LEU:HD12	2:M:110:THR:HB	1.89	0.54
2:H:163:SER:H	2:H:209:ASN:HD21	1.56	0.54
2:H:119:PRO:HB3	2:H:147:TYR:HB3	1.89	0.54
2:H:11:LEU:HD12	2:H:110:THR:HB	1.90	0.53
2:H:67:PHE:HA	2:H:81:GLN:O	2.08	0.53
1:L:189:HIS:O	1:L:211:ARG:HD3	2.08	0.52
2:M:150:GLU:CA	2:M:150:GLU:OE1	2.50	0.52
2:M:33:THR:HG23	2:M:52:SER:HA	1.91	0.52
2:M:67:PHE:HA	2:M:81:GLN:O	2.09	0.51
2:H:81:GLN:HE21	2:H:82(A):HIS:HE1	1.58	0.51
2:M:81:GLN:HE21	2:M:82(A):HIS:HE1	1.59	0.50
2:H:59:TYR:HB2	2:H:64:LYS:HG3	1.94	0.50
2:M:59:TYR:HB2	2:M:64:LYS:HG3	1.93	0.49
1:L:35:TRP:CE2	1:L:73:LEU:HB2	2.49	0.48
2:H:94:ARG:O	2:H:100(F):PHE:HA	2.13	0.48
1:K:35:TRP:CE2	1:K:73:LEU:HB2	2.49	0.48
3:H:229:2M6:HBK	3:H:229:2M6:HBTB	1.96	0.47
1:L:113:PRO:HB3	1:L:139:PHE:HB3	1.96	0.47
2:H:174:PHE:O	2:H:187:LEU:HD12	2.14	0.47
2:M:147:TYR:CD2	2:M:148:PHE:CA	2.93	0.47
2:H:179:GLN:HG2	2:H:184:LEU:O	2.15	0.47
2:M:18:LEU:HB3	2:M:82(C):MET:HE1	1.97	0.47
2:H:154:VAL:HA	2:H:209:ASN:O	2.16	0.46
1:K:113:PRO:HB3	1:K:139:PHE:HB3	1.97	0.46
2:M:137:THR:HA	2:M:194:PRO:HA	1.97	0.46
1:L:100:GLN:H	1:L:100:GLN:HE21	1.62	0.46
2:M:116:THR:HG22	2:M:149:PRO:HD3	1.96	0.46
2:M:35:ASN:ND2	2:M:50:SER:HB2	2.31	0.46
1:K:21:ILE:HG12	1:K:102:THR:HG21	1.98	0.46
2:M:212:HIS:HB3	2:M:217:THR:HB	1.97	0.46
2:M:47:TRP:HZ2	2:M:50:SER:HB3	1.81	0.46
2:H:47:TRP:HZ2	2:H:50:SER:HB3	1.81	0.45
1:L:21:ILE:HG12	1:L:102:THR:HG21	1.98	0.45

Continued on next page...

Continued from previous page...

Atom-1	Atom-2	Interatomic distance (Å)	Clash overlap (Å)
2:H:95:LYS:HB3	3:H:229:2M6:H4	1.99	0.45
2:H:68:THR:HG21	2:M:77:PHE:CE1	2.52	0.44
2:H:146:ASP:HB3	2:H:184:LEU:HD13	2.00	0.44
2:H:146:ASP:HA	2:H:184:LEU:HB3	2.00	0.43
2:H:157:TRP:CH2	2:H:208:CYS:HB3	2.53	0.43
2:M:94:ARG:O	2:M:100(F):PHE:HA	2.17	0.43
2:H:19:ILE:HD12	2:H:81:GLN:HG2	2.00	0.43
2:M:146:ASP:HB3	2:M:184:LEU:HD23	2.01	0.43
2:H:57:ARG:NH2	2:M:74:LEU:HB2	2.33	0.43
2:H:35:ASN:ND2	2:H:50:SER:HB2	2.32	0.42
2:M:100(B):ASP:OD1	3:M:229:2M6:HAN	2.19	0.42
2:M:163:SER:H	2:M:209:ASN:HD21	1.66	0.42
2:H:19:ILE:HG13	2:M:21:SER:HB3	2.01	0.42
1:L:134:CYS:HB2	1:L:148:TRP:CZ2	2.55	0.42
2:M:150:GLU:HA	2:M:151:PRO:HA	1.80	0.42
2:M:6:GLU:OE1	2:M:91:TYR:HA	2.20	0.42
1:K:7:SER:HB3	1:K:22:THR:HG22	2.01	0.42
2:H:84:VAL:HA	2:H:111:VAL:HB	2.01	0.42
2:M:147:TYR:HE1	2:M:187:LEU:HD23	1.85	0.41
1:K:3:VAL:HB	1:K:26:SER:HB3	2.02	0.41
2:M:84:VAL:HA	2:M:111:VAL:HB	2.01	0.41
2:H:12:VAL:HG11	2:H:82(C):MET:HE1	2.03	0.41
2:H:163:SER:H	2:H:209:ASN:ND2	2.17	0.41
2:H:6:GLU:OE1	2:H:91:TYR:HA	2.20	0.41
1:K:115:VAL:HA	1:K:135:LEU:O	2.20	0.41
1:L:145:LYS:HB3	1:L:197:THR:HB	2.01	0.41
1:K:85:THR:HA	1:K:102:THR:O	2.21	0.41
1:L:85:THR:HA	1:L:102:THR:O	2.21	0.41
1:L:115:VAL:HA	1:L:135:LEU:O	2.21	0.41
1:K:134:CYS:HB2	1:K:148:TRP:CZ2	2.56	0.40
1:L:17:ASP:HB2	1:L:78:LEU:HD12	2.01	0.40
2:H:144:VAL:HG11	2:H:152:VAL:HG11	2.03	0.40
1:K:145:LYS:HB3	1:K:197:THR:HB	2.04	0.40

There are no symmetry-related clashes.

5.3 Torsion angles

5.3.1 Protein backbone

In the following table, the Percentiles column shows the percent Ramachandran outliers of the chain as a percentile score with respect to all X-ray entries followed by that with respect to entries of similar resolution.

The Analysed column shows the number of residues for which the backbone conformation was analysed, and the total number of residues.

Mol	Chain	Analysed	Favoured	Allowed	Outliers	Percentiles	
1	K	211/213 (99%)	198 (94%)	13 (6%)	0	100	100
1	L	210/213 (99%)	199 (95%)	11 (5%)	0	100	100
2	H	216/224 (96%)	202 (94%)	14 (6%)	0	100	100
2	M	215/224 (96%)	198 (92%)	13 (6%)	4 (2%)	10	32
All	All	852/874 (98%)	797 (94%)	51 (6%)	4 (0%)	34	67

All (4) Ramachandran outliers are listed below:

Mol	Chain	Res	Type
2	M	149	PRO
2	M	150	GLU
2	M	151	PRO
2	M	146	ASP

5.3.2 Protein sidechains

In the following table, the Percentiles column shows the percent sidechain outliers of the chain as a percentile score with respect to all X-ray entries followed by that with respect to entries of similar resolution.

The Analysed column shows the number of residues for which the sidechain conformation was analysed, and the total number of residues.

Mol	Chain	Analysed	Rotameric	Outliers	Percentiles	
1	K	182/183 (100%)	163 (90%)	19 (10%)	9	23
1	L	182/183 (100%)	163 (90%)	19 (10%)	9	23
2	H	184/189 (97%)	169 (92%)	15 (8%)	14	36
2	M	184/189 (97%)	162 (88%)	22 (12%)	6	16
All	All	732/744 (98%)	657 (90%)	75 (10%)	9	25

All (75) residues with a non-rotameric sidechain are listed below:

Mol	Chain	Res	Type
1	L	7	SER
1	L	11	LEU
1	L	15	VAL
1	L	22	THR
1	L	33	LEU
1	L	50	LYS
1	L	54	LEU
1	L	56	THR
1	L	89	GLN
1	L	100	GLN
1	L	105	GLU
1	L	108	ARG
1	L	125	LEU
1	L	143	GLU
1	L	154	LEU
1	L	158	ASN
1	L	159	SER
1	L	169	LYS
1	L	202	SER
2	H	13	LYS
2	H	21	SER
2	H	29	ILE
2	H	50	SER
2	H	58	ASP
2	H	64	LYS
2	H	100	LEU
2	H	110	THR
2	H	140	LEU
2	H	156	SER
2	H	168	SER
2	H	177	VAL
2	H	187	LEU
2	H	192	THR
2	H	196	SER
1	K	7	SER
1	K	11	LEU
1	K	15	VAL
1	K	22	THR
1	K	33	LEU
1	K	50	LYS
1	K	54	LEU
1	K	56	THR

Continued on next page...

Continued from previous page...

Mol	Chain	Res	Type
1	K	69	THR
1	K	89	GLN
1	K	105	GLU
1	K	108	ARG
1	K	125	LEU
1	K	143	GLU
1	K	154	LEU
1	K	158	ASN
1	K	159	SER
1	K	169	LYS
1	K	202	SER
2	M	7	SER
2	M	12	VAL
2	M	21	SER
2	M	29	ILE
2	M	50	SER
2	M	52	SER
2	M	52(A)	THR
2	M	55	THR
2	M	58	ASP
2	M	64	LYS
2	M	110	THR
2	M	140	LEU
2	M	147	TYR
2	M	153	THR
2	M	163	SER
2	M	168	SER
2	M	187	LEU
2	M	192	THR
2	M	209	ASN
2	M	211	ASN
2	M	213	LYS
2	M	221	LYS

Some sidechains can be flipped to improve hydrogen bonding and reduce clashes. All (20) such sidechains are listed below:

Mol	Chain	Res	Type
1	L	38	GLN
1	L	87	HIS
1	L	89	GLN
1	L	100	GLN
1	L	138	ASN

Continued on next page...

Continued from previous page...

Mol	Chain	Res	Type
1	L	198	HIS
2	H	35	ASN
2	H	81	GLN
2	H	82(A)	HIS
2	H	162	ASN
2	H	209	ASN
1	K	38	GLN
1	K	87	HIS
1	K	89	GLN
1	K	138	ASN
1	K	198	HIS
2	M	35	ASN
2	M	81	GLN
2	M	82(A)	HIS
2	M	209	ASN

5.3.3 RNA [i](#)

There are no RNA molecules in this entry.

5.4 Non-standard residues in protein, DNA, RNA chains [i](#)

There are no non-standard protein/DNA/RNA residues in this entry.

5.5 Carbohydrates [i](#)

There are no carbohydrates in this entry.

5.6 Ligand geometry [i](#)

2 ligands are modelled in this entry.

In the following table, the Counts columns list the number of bonds (or angles) for which Mogul statistics could be retrieved, the number of bonds (or angles) that are observed in the model and the number of bonds (or angles) that are defined in the chemical component dictionary. The Link column lists molecule types, if any, to which the group is linked. The Z score for a bond length (or angle) is the number of standard deviations the observed value is removed from the expected value. A bond length (or angle) with $|Z| > 2$ is considered an outlier worth inspection. RMSZ is the root-mean-square of all Z scores of the bond lengths (or angles).

Mol	Type	Chain	Res	Link	Bond lengths			Bond angles		
					Counts	RMSZ	# Z > 2	Counts	RMSZ	# Z > 2
3	2M6	H	229	-	49,49,49	0.96	2 (4%)	72,73,73	2.81	33 (45%)
3	2M6	M	229	-	49,49,49	1.34	7 (14%)	72,73,73	2.56	27 (37%)

In the following table, the Chirals column lists the number of chiral outliers, the number of chiral centers analysed, the number of these observed in the model and the number defined in the chemical component dictionary. Similar counts are reported in the Torsion and Rings columns. '-' means no outliers of that kind were identified.

Mol	Type	Chain	Res	Link	Chirals	Torsions	Rings
3	2M6	H	229	-	-	0/22/102/102	0/4/4/4
3	2M6	M	229	-	-	0/22/102/102	0/4/4/4

All (9) bond length outliers are listed below:

Mol	Chain	Res	Type	Atoms	Z	Observed(Å)	Ideal(Å)
3	H	229	2M6	OAS-CAX	2.03	1.47	1.41
3	M	229	2M6	OAS-CAX	2.04	1.47	1.41
3	H	229	2M6	CAU-CAZ	2.12	1.57	1.53
3	M	229	2M6	CAL-CAQ	2.24	1.57	1.53
3	M	229	2M6	O1-C1	2.31	1.48	1.41
3	M	229	2M6	OBS-CAO	2.56	1.48	1.39
3	M	229	2M6	OBO-CBH	2.64	1.49	1.43
3	M	229	2M6	O5-C5	2.89	1.48	1.43
3	M	229	2M6	O5-C1	4.17	1.52	1.41

All (60) bond angle outliers are listed below:

Mol	Chain	Res	Type	Atoms	Z	Observed(°)	Ideal(°)
3	M	229	2M6	CBT-C6-C5	-6.39	103.14	112.18
3	H	229	2M6	CBT-C6-C5	-6.17	103.44	112.18
3	H	229	2M6	OAS-CAX-OAY	-5.10	97.77	110.68
3	M	229	2M6	OAS-CAX-OAY	-4.62	98.98	110.68
3	H	229	2M6	C1-O1-CBJ	-3.93	107.73	118.01
3	M	229	2M6	OAS-CAM-CAL	-3.76	97.45	107.17
3	M	229	2M6	C1-O1-CBJ	-3.69	108.35	118.01
3	H	229	2M6	OAS-CAM-CAL	-3.53	98.07	107.17
3	H	229	2M6	CBK-OBE-CAW	-3.11	109.87	118.01
3	M	229	2M6	OBC-CAV-CAU	-3.05	103.46	110.34
3	H	229	2M6	OAY-CAX-CAW	-3.02	103.38	109.47
3	H	229	2M6	CBK-CBJ-CBI	-2.85	105.40	110.45
3	H	229	2M6	OBE-CAW-CAV	-2.50	100.71	107.17
3	M	229	2M6	O5-C1-C2	-2.43	105.28	110.28

Continued on next page...

Continued from previous page...

Mol	Chain	Res	Type	Atoms	Z	Observed(°)	Ideal(°)
3	M	229	2M6	OAY-CAW-CAW	-2.35	104.73	109.47
3	H	229	2M6	OBE-CAW-CAX	-2.24	102.97	108.87
3	H	229	2M6	O4-C4-C3	-2.22	105.34	110.34
3	H	229	2M6	O5-C1-C2	-2.17	105.83	110.28
3	M	229	2M6	O6-C6-CBT	-2.11	103.50	109.61
3	H	229	2M6	C1-O5-C5	2.05	116.23	113.08
3	M	229	2M6	CAV-CAU-CAZ	2.17	113.98	110.20
3	M	229	2M6	OBS-CAO-CAN	2.18	115.05	109.21
3	H	229	2M6	OBB-CAU-CAZ	2.19	115.03	109.24
3	H	229	2M6	OBE-CBK-OBL	2.25	116.36	110.68
3	H	229	2M6	O3-C3-C2	2.32	115.55	110.34
3	H	229	2M6	C4-C3-C2	2.37	115.21	110.79
3	H	229	2M6	OAS-CAM-CAN	2.44	113.47	107.17
3	H	229	2M6	O1-C1-C2	2.45	114.06	108.10
3	M	229	2M6	CAU-CAV-CAW	2.58	115.27	109.60
3	M	229	2M6	OBS-CAO-OAP	2.80	117.92	110.25
3	H	229	2M6	O6-C6-C5	2.82	114.16	109.22
3	M	229	2M6	CAO-OAP-CAQ	2.85	118.74	113.47
3	H	229	2M6	OBL-CBK-CBJ	2.89	115.30	109.47
3	M	229	2M6	OAS-CAM-CAN	3.03	114.98	107.17
3	M	229	2M6	CAX-OAS-CAM	3.17	126.28	118.01
3	M	229	2M6	CAN-CAM-CAL	3.23	115.14	110.89
3	M	229	2M6	CAM-CAL-CAQ	3.26	117.01	109.61
3	H	229	2M6	CAO-OAP-CAQ	3.34	119.64	113.47
3	M	229	2M6	O5-C5-C6	3.34	116.00	107.27
3	M	229	2M6	C1-O5-C5	3.34	118.22	113.08
3	M	229	2M6	O1-C1-O5	3.37	119.21	110.68
3	H	229	2M6	CAX-CAW-CAV	3.42	116.52	110.45
3	M	229	2M6	OAY-CAZ-CAU	3.50	116.25	109.68
3	H	229	2M6	OAP-CAQ-CAR	3.51	115.23	106.36
3	H	229	2M6	CAN-CAM-CAL	3.66	115.70	110.89
3	M	229	2M6	CBK-OBL-CBM	3.71	120.94	113.75
3	H	229	2M6	CAM-CAL-CAQ	3.75	118.11	109.61
3	H	229	2M6	CBK-OBL-CBM	3.90	121.32	113.75
3	H	229	2M6	O5-C5-C4	4.00	114.33	108.03
3	H	229	2M6	CAO-CAN-CAM	4.05	116.48	110.44
3	M	229	2M6	CAO-CAN-CAM	4.09	116.54	110.44
3	H	229	2M6	OAP-CAQ-CAL	4.17	117.50	109.68
3	M	229	2M6	OAP-CAQ-CAL	4.67	118.44	109.68
3	M	229	2M6	OBL-CBM-CBH	4.69	118.49	109.68
3	M	229	2M6	O5-C5-C4	4.71	115.45	108.03
3	H	229	2M6	OBL-CBM-CBH	4.89	118.86	109.68

Continued on next page...

Continued from previous page...

Mol	Chain	Res	Type	Atoms	Z	Observed(°)	Ideal(°)
3	H	229	2M6	CAX-OAS-CAM	5.27	131.79	118.01
3	H	229	2M6	OAP-CAO-CAN	5.62	118.76	109.80
3	M	229	2M6	OAS-CAX-CAW	8.87	127.33	109.05
3	H	229	2M6	OAS-CAX-CAW	10.76	131.22	109.05

There are no chirality outliers.

There are no torsion outliers.

There are no ring outliers.

2 monomers are involved in 3 short contacts:

Mol	Chain	Res	Type	Clashes	Symm-Clashes
3	H	229	2M6	2	0
3	M	229	2M6	1	0

5.7 Other polymers [i](#)

There are no such residues in this entry.

5.8 Polymer linkage issues [i](#)

There are no chain breaks in this entry.

6 Fit of model and data ⓘ

6.1 Protein, DNA and RNA chains ⓘ

In the following table, the column labelled ‘#RSRZ> 2’ contains the number (and percentage) of RSRZ outliers, followed by percent RSRZ outliers for the chain as percentile scores relative to all X-ray entries and entries of similar resolution. The OWAB column contains the minimum, median, 95th percentile and maximum values of the occupancy-weighted average B-factor per residue. The column labelled ‘Q< 0.9’ lists the number of (and percentage) of residues with an average occupancy less than 0.9.

Mol	Chain	Analysed	<RSRZ>	#RSRZ>2	OWAB(Å ²)	Q<0.9
1	K	213/213 (100%)	0.06	2 (0%) 85 84	55, 75, 95, 106	0
1	L	212/213 (99%)	0.03	5 (2%) 62 57	58, 75, 99, 111	0
2	H	220/224 (98%)	0.30	8 (3%) 46 39	52, 76, 101, 130	0
2	M	219/224 (97%)	0.26	4 (1%) 71 68	57, 76, 122, 218	0
All	All	864/874 (98%)	0.16	19 (2%) 65 61	52, 76, 106, 218	0

All (19) RSRZ outliers are listed below:

Mol	Chain	Res	Type	RSRZ
2	H	127	SER	4.1
2	M	135	GLY	4.0
1	L	80	PHE	3.0
2	H	200	THR	2.9
1	K	68	GLY	2.9
2	H	70	SER	2.7
2	H	99	ARG	2.6
2	M	200	THR	2.4
2	H	21	SER	2.4
1	L	62	PHE	2.3
1	L	169	LYS	2.3
2	M	214	PRO	2.3
1	L	77	GLY	2.3
1	L	190	LYS	2.3
2	H	20	LEU	2.2
2	H	112	SER	2.1
2	H	92	CYS	2.1
1	K	190	LYS	2.1
2	M	189	SER	2.0

6.2 Non-standard residues in protein, DNA, RNA chains [i](#)

There are no non-standard protein/DNA/RNA residues in this entry.

6.3 Carbohydrates [i](#)

There are no carbohydrates in this entry.

6.4 Ligands [i](#)

In the following table, the Atoms column lists the number of modelled atoms in the group and the number defined in the chemical component dictionary. LLDF column lists the quality of electron density of the group with respect to its neighbouring residues in protein, DNA or RNA chains. The B-factors column lists the minimum, median, 95th percentile and maximum values of B factors of atoms in the group. The column labelled 'Q< 0.9' lists the number of atoms with occupancy less than 0.9.

Mol	Type	Chain	Res	Atoms	RSCC	RSR	LLDF	B-factors(Å ²)	Q<0.9
3	2M6	M	229	46/46	0.91	0.19	0.19	60,69,74,77	0
3	2M6	H	229	46/46	0.91	0.16	-0.53	63,76,82,83	0

6.5 Other polymers [i](#)

There are no such residues in this entry.