



Full wwPDB X-ray Structure Validation Report ⓘ

Feb 1, 2016 – 07:17 PM GMT

PDB ID : 4OFP
Title : Crystal Structure of SYG-2 D3-D4
Authors : Ozkan, E.; Garcia, K.C.
Deposited on : 2014-01-15
Resolution : 3.00 Å(reported)

This is a Full wwPDB X-ray Structure Validation Report for a publicly released PDB entry.
We welcome your comments at validation@mail.wwpdb.org
A user guide is available at
<http://wwpdb.org/validation/2016/XrayValidationReportHelp>
with specific help available everywhere you see the ⓘ symbol.

The following versions of software and data (see [references ⓘ](#)) were used in the production of this report:

MolProbity : 4.02b-467
Mogul : 1.7 (RC4), CSD as536be (2015)
Xtriage (Phenix) : 1.9-1692
EDS : rb-20026688
Percentile statistics : 20151230.v01 (using entries in the PDB archive December 30th 2015)
Refmac : 5.8.0135
CCP4 : 6.5.0
Ideal geometry (proteins) : Engh & Huber (2001)
Ideal geometry (DNA, RNA) : Parkinson et al. (1996)
Validation Pipeline (wwPDB-VP) : trunk26865

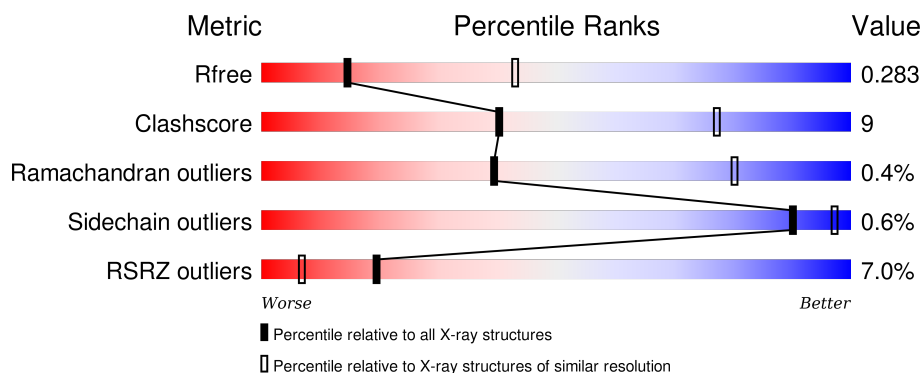
1 Overall quality at a glance

The following experimental techniques were used to determine the structure:

X-RAY DIFFRACTION

The reported resolution of this entry is 3.00 Å.

Percentile scores (ranging between 0-100) for global validation metrics of the entry are shown in the following graphic. The table shows the number of entries on which the scores are based.



Metric	Whole archive (#Entries)	Similar resolution (#Entries, resolution range(Å))
R_{free}	91344	1578 (3.00-3.00)
Clashscore	102246	1912 (3.00-3.00)
Ramachandran outliers	100387	1853 (3.00-3.00)
Sidechain outliers	100360	1856 (3.00-3.00)
RSRZ outliers	91569	1592 (3.00-3.00)

The table below summarises the geometric issues observed across the polymeric chains and their fit to the electron density. The red, orange, yellow and green segments on the lower bar indicate the fraction of residues that contain outliers for ≥ 3 , 2, 1 and 0 types of geometric quality criteria. A grey segment represents the fraction of residues that are not modelled. The numeric value for each fraction is indicated below the corresponding segment, with a dot representing fractions $\leq 5\%$. The upper red bar (where present) indicates the fraction of residues that have poor fit to the electron density. The numeric value is given above the bar.

Mol	Chain	Length	Quality of chain
1	A	208	<div> <div>2%</div> <div>79%</div> <div>15%</div> <div>5%</div> </div>
1	B	208	<div> <div>10%</div> <div>72%</div> <div>21%</div> <div>7%</div> </div>
1	C	208	<div> <div>10%</div> <div>72%</div> <div>21%</div> <div>7%</div> </div>
1	D	208	<div> <div>5%</div> <div>75%</div> <div>20%</div> <div>5%</div> </div>

The following table lists non-polymeric compounds, carbohydrate monomers and non-standard

residues in protein, DNA, RNA chains that are outliers for geometric or electron-density-fit criteria:

Mol	Type	Chain	Res	Chirality	Geometry	Clashes	Electron density
2	NAG	A	501	-	-	-	X

2 Entry composition

There are 2 unique types of molecules in this entry. The entry contains 6032 atoms, of which 0 are hydrogens and 0 are deuteriums.

In the tables below, the ZeroOcc column contains the number of atoms modelled with zero occupancy, the AltConf column contains the number of residues with at least one atom in alternate conformation and the Trace column contains the number of residues modelled with at most 2 atoms.

- Molecule 1 is a protein called Protein SYG-2.

Mol	Chain	Residues	Atoms					ZeroOcc	AltConf	Trace
1	A	197	Total	C	N	O	S	0	0	0
			1499	927	266	299	7			
1	B	194	Total	C	N	O	S	0	0	0
			1472	909	262	294	7			
1	C	193	Total	C	N	O	S	0	0	0
			1473	909	262	295	7			
1	D	197	Total	C	N	O	S	0	0	0
			1504	928	269	300	7			

There are 32 discrepancies between the modelled and reference sequences:

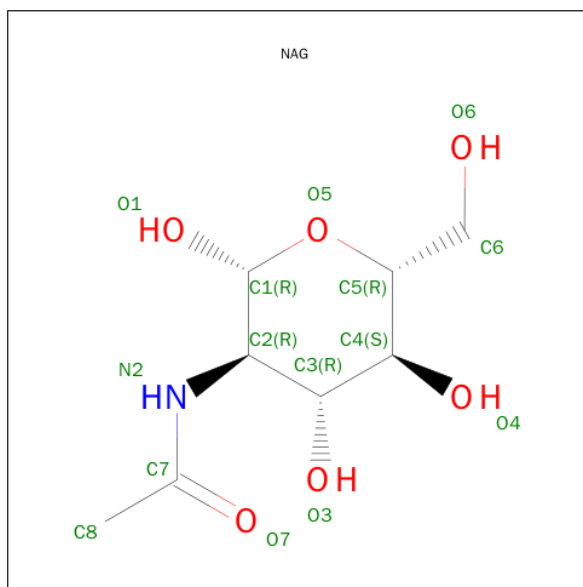
Chain	Residue	Modelled	Actual	Comment	Reference
A	229	ALA	-	EXPRESSION TAG	UNP Q9U3P2
A	230	ASP	-	EXPRESSION TAG	UNP Q9U3P2
A	431	HIS	-	EXPRESSION TAG	UNP Q9U3P2
A	432	HIS	-	EXPRESSION TAG	UNP Q9U3P2
A	433	HIS	-	EXPRESSION TAG	UNP Q9U3P2
A	434	HIS	-	EXPRESSION TAG	UNP Q9U3P2
A	435	HIS	-	EXPRESSION TAG	UNP Q9U3P2
A	436	HIS	-	EXPRESSION TAG	UNP Q9U3P2
B	229	ALA	-	EXPRESSION TAG	UNP Q9U3P2
B	230	ASP	-	EXPRESSION TAG	UNP Q9U3P2
B	431	HIS	-	EXPRESSION TAG	UNP Q9U3P2
B	432	HIS	-	EXPRESSION TAG	UNP Q9U3P2
B	433	HIS	-	EXPRESSION TAG	UNP Q9U3P2
B	434	HIS	-	EXPRESSION TAG	UNP Q9U3P2
B	435	HIS	-	EXPRESSION TAG	UNP Q9U3P2
B	436	HIS	-	EXPRESSION TAG	UNP Q9U3P2
C	229	ALA	-	EXPRESSION TAG	UNP Q9U3P2
C	230	ASP	-	EXPRESSION TAG	UNP Q9U3P2
C	431	HIS	-	EXPRESSION TAG	UNP Q9U3P2
C	432	HIS	-	EXPRESSION TAG	UNP Q9U3P2
C	433	HIS	-	EXPRESSION TAG	UNP Q9U3P2

Continued on next page...

Continued from previous page...

Chain	Residue	Modelled	Actual	Comment	Reference
C	434	HIS	-	EXPRESSION TAG	UNP Q9U3P2
C	435	HIS	-	EXPRESSION TAG	UNP Q9U3P2
C	436	HIS	-	EXPRESSION TAG	UNP Q9U3P2
D	229	ALA	-	EXPRESSION TAG	UNP Q9U3P2
D	230	ASP	-	EXPRESSION TAG	UNP Q9U3P2
D	431	HIS	-	EXPRESSION TAG	UNP Q9U3P2
D	432	HIS	-	EXPRESSION TAG	UNP Q9U3P2
D	433	HIS	-	EXPRESSION TAG	UNP Q9U3P2
D	434	HIS	-	EXPRESSION TAG	UNP Q9U3P2
D	435	HIS	-	EXPRESSION TAG	UNP Q9U3P2
D	436	HIS	-	EXPRESSION TAG	UNP Q9U3P2

- Molecule 2 is SUGAR (N-ACETYL-D-GLUCOSAMINE) (three-letter code: NAG) (formula: $C_8H_{15}NO_6$).



Mol	Chain	Residues	Atoms				ZeroOcc	AltConf
2	A	1	Total	C	N	O	0	0
			14	8	1	5		
2	A	1	Total	C	N	O	0	0
			14	8	1	5		
2	A	1	Total	C	N	O	0	0
			14	8	1	5		
2	C	1	Total	C	N	O	0	0
			14	8	1	5		
2	D	1	Total	C	N	O	0	0
			14	8	1	5		

Continued on next page...

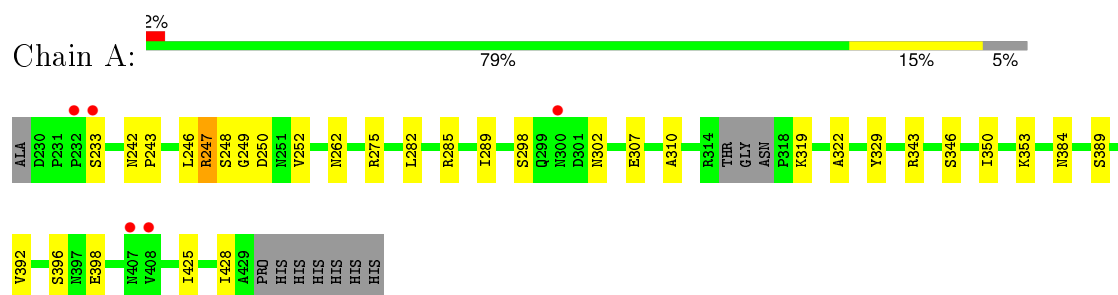
Continued from previous page...

Mol	Chain	Residues	Atoms				ZeroOcc	AltConf
2	D	1	Total	C	N	O	0	0
			14	8	1	5		

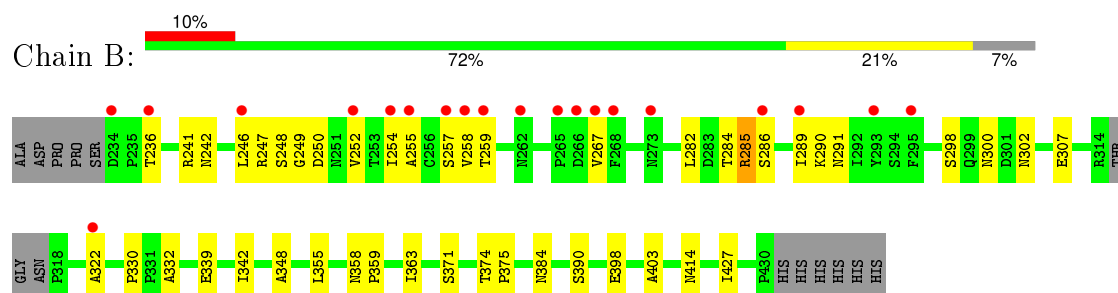
3 Residue-property plots

These plots are drawn for all protein, RNA and DNA chains in the entry. The first graphic for a chain summarises the proportions of errors displayed in the second graphic. The second graphic shows the sequence view annotated by issues in geometry and electron density. Residues are color-coded according to the number of geometric quality criteria for which they contain at least one outlier: green = 0, yellow = 1, orange = 2 and red = 3 or more. A red dot above a residue indicates a poor fit to the electron density ($RSRZ > 2$). Stretches of 2 or more consecutive residues without any outlier are shown as a green connector. Residues present in the sample, but not in the model, are shown in grey.

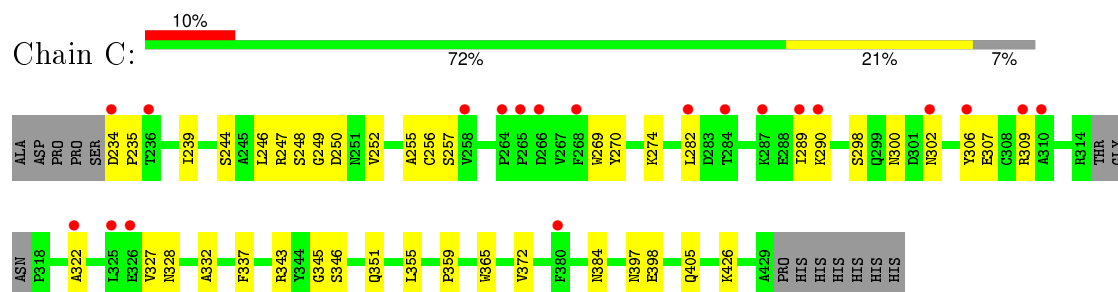
• Molecule 1: Protein SYG-2



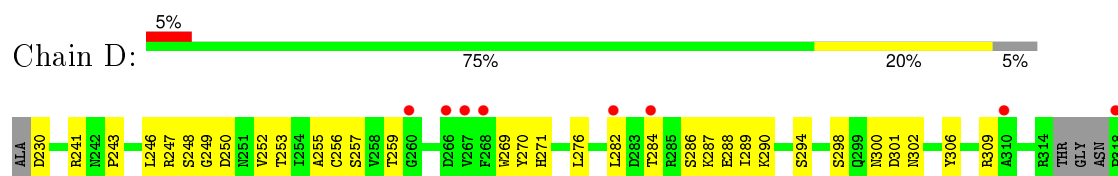
• Molecule 1: Protein SYG-2

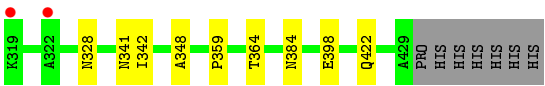


• Molecule 1: Protein SYG-2



• Molecule 1: Protein SYG-2





4 Data and refinement statistics

Property	Value	Source
Space group	P 43 21 2	Depositor
Cell constants a, b, c, α , β , γ	121.24Å 121.24Å 178.16Å 90.00° 90.00° 90.00°	Depositor
Resolution (Å)	46.31 – 3.00 46.32 – 3.00	Depositor EDS
% Data completeness (in resolution range)	100.0 (46.31-3.00) 100.0 (46.32-3.00)	Depositor EDS
R_{merge}	(Not available)	Depositor
R_{sym}	0.16	Depositor
$\langle I/\sigma(I) \rangle$ ¹	3.99 (at 3.01Å)	Xtriage
Refinement program	PHENIX (phenix.refine: 1.8.4_1492)	Depositor
R, R_{free}	0.242 , 0.283 0.242 , 0.283	Depositor DCC
R_{free} test set	1364 reflections (5.00%)	DCC
Wilson B-factor (Å ²)	106.1	Xtriage
Anisotropy	0.064	Xtriage
Bulk solvent k_{sol} (e/Å ³), B_{sol} (Å ²)	0.30 , 85.4	EDS
Estimated twinning fraction	No twinning to report.	Xtriage
L-test for twinning ²	$\langle L \rangle = 0.45$, $\langle L^2 \rangle = 0.28$	Xtriage
Outliers	1 of 27351 reflections (0.004%)	Xtriage
F_o, F_c correlation	0.93	EDS
Total number of atoms	6032	wwPDB-VP
Average B, all atoms (Å ²)	147.0	wwPDB-VP

Xtriage's analysis on translational NCS is as follows: *The largest off-origin peak in the Patterson function is 3.66% of the height of the origin peak. No significant pseudotranslation is detected.*

¹Intensities estimated from amplitudes.

²Theoretical values of $\langle |L| \rangle$, $\langle L^2 \rangle$ for acentric reflections are 0.5, 0.375 respectively for untwinned datasets, and 0.333, 0.2 for perfectly twinned datasets.

5 Model quality [i](#)

5.1 Standard geometry [i](#)

Bond lengths and bond angles in the following residue types are not validated in this section: NAG

The Z score for a bond length (or angle) is the number of standard deviations the observed value is removed from the expected value. A bond length (or angle) with $|Z| > 5$ is considered an outlier worth inspection. RMSZ is the root-mean-square of all Z scores of the bond lengths (or angles).

Mol	Chain	Bond lengths		Bond angles	
		RMSZ	$\# Z > 5$	RMSZ	$\# Z > 5$
1	A	0.32	0/1530	0.54	1/2083 (0.0%)
1	B	0.30	0/1502	0.53	0/2046
1	C	0.28	0/1502	0.49	0/2043
1	D	0.32	0/1535	0.55	0/2089
All	All	0.31	0/6069	0.52	1/8261 (0.0%)

There are no bond length outliers.

All (1) bond angle outliers are listed below:

Mol	Chain	Res	Type	Atoms	Z	Observed(°)	Ideal(°)
1	A	247	ARG	NE-CZ-NH1	-6.62	116.99	120.30

There are no chirality outliers.

There are no planarity outliers.

5.2 Too-close contacts [i](#)

In the following table, the Non-H and H(model) columns list the number of non-hydrogen atoms and hydrogen atoms in the chain respectively. The H(added) column lists the number of hydrogen atoms added and optimized by MolProbity. The Clashes column lists the number of clashes within the asymmetric unit, whereas Symm-Clashes lists symmetry related clashes.

Mol	Chain	Non-H	H(model)	H(added)	Clashes	Symm-Clashes
1	A	1499	0	1437	25	0
1	B	1472	0	1410	36	0
1	C	1473	0	1417	33	0
1	D	1504	0	1448	30	0
2	A	42	0	39	1	0
2	C	14	0	13	1	0

Continued on next page...

Continued from previous page...

Mol	Chain	Non-H	H(model)	H(added)	Clashes	Symm-Clashes
2	D	28	0	26	1	0
All	All	6032	0	5790	103	0

The all-atom clashscore is defined as the number of clashes found per 1000 atoms (including hydrogen atoms). The all-atom clashscore for this structure is 9.

All (103) close contacts within the same asymmetric unit are listed below, sorted by their clash magnitude.

Atom-1	Atom-2	Interatomic distance (Å)	Clash overlap (Å)
1:A:247:ARG:NH1	1:D:249:GLY:O	2.04	0.88
1:D:255:ALA:HB1	1:D:290:LYS:HE3	1.57	0.86
1:D:282:LEU:HG	1:D:289:ILE:HG12	1.61	0.82
1:B:282:LEU:HG	1:B:289:ILE:HA	1.61	0.82
1:A:247:ARG:NH2	1:D:248:SER:OG	2.13	0.81
1:A:248:SER:OG	1:A:249:GLY:N	2.09	0.81
1:D:248:SER:OG	1:D:249:GLY:N	2.16	0.78
1:B:284:THR:O	1:B:286:SER:N	2.19	0.76
1:B:248:SER:OG	1:B:249:GLY:N	2.20	0.75
1:B:258:VAL:HB	1:B:289:ILE:HB	1.69	0.74
1:C:300:ASN:O	1:C:384:ASN:ND2	2.23	0.72
1:B:257:SER:OG	1:B:290:LYS:NZ	2.21	0.70
1:A:247:ARG:HH12	1:D:249:GLY:C	1.96	0.69
1:A:343:ARG:HD3	1:A:428:ILE:HG13	1.74	0.69
1:D:300:ASN:O	1:D:384:ASN:ND2	2.27	0.68
1:D:257:SER:HB2	1:D:290:LYS:HZ3	1.59	0.67
1:D:298:SER:N	1:D:302:ASN:OD1	2.27	0.67
1:B:247:ARG:NH2	1:C:248:SER:OG	2.26	0.67
1:C:282:LEU:HG	1:C:289:ILE:HG12	1.77	0.67
1:C:302:ASN:ND2	1:C:306:TYR:OH	2.29	0.66
1:B:255:ALA:HB1	1:B:290:LYS:HE3	1.78	0.66
1:B:247:ARG:HH11	1:C:250:ASP:HB3	1.61	0.65
1:D:246:LEU:HD23	1:D:252:VAL:HG21	1.77	0.64
1:D:257:SER:HB2	1:D:290:LYS:NZ	2.13	0.63
1:A:248:SER:HG	1:A:249:GLY:N	1.95	0.63
1:B:249:GLY:O	1:C:247:ARG:NH1	2.31	0.63
1:B:241:ARG:NH2	1:C:244:SER:O	2.30	0.60
1:C:248:SER:OG	1:C:249:GLY:N	2.34	0.60
1:A:298:SER:N	1:A:302:ASN:OD1	2.35	0.59
1:C:255:ALA:HB1	1:C:290:LYS:HE3	1.84	0.59
1:B:298:SER:N	1:B:302:ASN:OD1	2.34	0.59
1:B:246:LEU:HD22	1:B:252:VAL:HG21	1.84	0.59

Continued on next page...

Continued from previous page...

Atom-1	Atom-2	Interatomic distance (Å)	Clash overlap (Å)
1:C:298:SER:N	1:C:302:ASN:OD1	2.30	0.59
1:D:256:CYS:HB2	1:D:269:TRP:CZ2	2.38	0.58
1:C:256:CYS:HB2	1:C:269:TRP:CZ2	2.40	0.56
1:D:342:ILE:HG21	1:D:348:ALA:HB2	1.88	0.56
1:B:342:ILE:HG21	1:B:348:ALA:HB2	1.88	0.56
1:C:307:GLU:HA	1:C:322:ALA:HA	1.88	0.56
1:C:307:GLU:OE2	1:C:309:ARG:NH2	2.31	0.55
1:A:275:ARG:NH2	2:A:502:NAG:O7	2.39	0.55
1:C:270:TYR:HB2	1:C:307:GLU:HG3	1.88	0.55
1:C:337:PHE:HB2	1:C:351:GLN:HB3	1.89	0.54
1:D:286:SER:O	1:D:287:LYS:HG2	2.07	0.54
1:A:329:TYR:OH	1:A:384:ASN:O	2.18	0.54
1:A:282:LEU:HD13	1:A:289:ILE:HG13	1.89	0.53
1:A:262:ASN:O	1:D:230:ASP:N	2.42	0.53
1:B:307:GLU:HA	1:B:322:ALA:HA	1.90	0.53
1:B:257:SER:O	1:C:235:PRO:HA	2.09	0.53
1:D:271:HIS:CG	1:D:306:TYR:HE1	2.28	0.52
1:A:350:ILE:HD11	1:A:425:ILE:HD11	1.91	0.52
1:B:258:VAL:N	1:B:289:ILE:O	2.43	0.52
1:C:328:ASN:OD1	1:C:359:PRO:HD3	2.10	0.51
1:B:236:THR:O	1:C:257:SER:N	2.39	0.51
1:A:250:ASP:HB3	1:D:247:ARG:HD3	1.94	0.50
1:A:247:ARG:NH2	1:D:248:SER:HG	2.10	0.50
1:A:307:GLU:HA	1:A:322:ALA:HA	1.94	0.50
1:B:259:THR:HG1	1:C:234:ASP:N	2.09	0.49
1:B:284:THR:O	1:B:285:ARG:HG3	2.13	0.49
1:D:269:TRP:HB3	1:D:276:LEU:HD12	1.95	0.48
1:B:247:ARG:NH1	1:C:249:GLY:O	2.47	0.48
1:A:247:ARG:NH1	1:D:250:ASP:HB3	2.28	0.47
1:A:246:LEU:HD22	1:A:252:VAL:HG22	1.95	0.47
1:C:405:GLN:HB3	1:C:426:LYS:HD2	1.97	0.47
1:B:363:ILE:HG21	1:B:390:SER:HB3	1.97	0.46
1:C:270:TYR:HA	1:C:274:LYS:O	2.15	0.46
1:A:233:SER:CB	1:D:259:THR:HB	2.46	0.46
1:C:270:TYR:HB2	1:C:307:GLU:CG	2.46	0.45
1:B:403:ALA:O	1:B:427:ILE:HD12	2.16	0.45
1:B:332:ALA:HB3	1:B:355:LEU:HD12	1.99	0.45
1:B:254:ILE:HG22	1:C:239:ILE:HG12	1.98	0.45
1:B:267:VAL:HG12	1:B:291:ASN:HD22	1.82	0.45
1:B:300:ASN:O	1:B:384:ASN:ND2	2.49	0.45
1:A:310:ALA:HB3	1:A:319:LYS:HB2	1.99	0.44

Continued on next page...

Continued from previous page...

Atom-1	Atom-2	Interatomic distance (Å)	Clash overlap (Å)
1:C:345:GLY:HA2	1:C:397:ASN:OD1	2.18	0.44
1:B:398:GLU:N	1:B:398:GLU:OE1	2.50	0.44
1:D:253:THR:HG22	1:D:294:SER:HB2	2.00	0.44
1:C:343:ARG:O	1:C:346:SER:OG	2.28	0.43
1:D:398:GLU:OE2	1:D:398:GLU:N	2.51	0.43
1:B:248:SER:OG	1:C:247:ARG:NH2	2.51	0.43
2:C:501:NAG:O3	1:D:341:ASN:OD1	2.23	0.43
1:B:250:ASP:OD1	1:B:250:ASP:N	2.50	0.43
1:D:246:LEU:H	1:D:246:LEU:HD12	1.83	0.43
1:A:353:LYS:HG2	1:A:389:SER:HB2	2.01	0.43
1:D:270:TYR:CE1	1:D:309:ARG:HD2	2.53	0.43
1:D:328:ASN:ND2	1:D:359:PRO:HD3	2.34	0.42
1:B:330:PRO:HA	1:B:414:ASN:HD21	1.84	0.42
1:A:242:ASN:CB	1:D:241:ARG:HE	2.32	0.42
1:B:339:GLU:OE2	1:B:342:ILE:HG22	2.19	0.42
1:A:243:PRO:HG2	2:D:501:NAG:O6	2.19	0.42
1:C:246:LEU:HD11	1:C:252:VAL:HG21	2.01	0.42
1:A:398:GLU:OE1	1:A:398:GLU:N	2.52	0.42
1:C:302:ASN:HB3	1:C:327:VAL:HG21	2.01	0.42
1:B:247:ARG:HH12	1:C:249:GLY:C	2.23	0.42
1:A:350:ILE:HB	1:A:392:VAL:HG12	2.01	0.42
1:C:365:TRP:HB2	1:C:372:VAL:HG22	2.01	0.42
1:C:398:GLU:N	1:C:398:GLU:OE1	2.53	0.42
1:C:332:ALA:HB3	1:C:355:LEU:HD12	2.02	0.42
1:B:358:ASN:HA	1:B:359:PRO:HA	1.81	0.41
1:B:374:THR:HA	1:B:375:PRO:HD3	1.95	0.41
1:D:301:ASP:HB3	1:D:302:ASN:H	1.67	0.41
1:B:282:LEU:HD21	1:B:289:ILE:HG13	2.02	0.41
1:A:346:SER:O	1:A:396:SER:OG	2.27	0.41
1:B:371:SER:CB	1:D:364:THR:HG21	2.52	0.40

There are no symmetry-related clashes.

5.3 Torsion angles ⓘ

5.3.1 Protein backbone ⓘ

In the following table, the Percentiles column shows the percent Ramachandran outliers of the chain as a percentile score with respect to all X-ray entries followed by that with respect to entries of similar resolution.

The Analysed column shows the number of residues for which the backbone conformation was analysed, and the total number of residues.

Mol	Chain	Analysed	Favoured	Allowed	Outliers	Percentiles	
1	A	193/208 (93%)	184 (95%)	9 (5%)	0	100	100
1	B	190/208 (91%)	176 (93%)	12 (6%)	2 (1%)	17	58
1	C	189/208 (91%)	178 (94%)	11 (6%)	0	100	100
1	D	193/208 (93%)	181 (94%)	11 (6%)	1 (0%)	34	76
All	All	765/832 (92%)	719 (94%)	43 (6%)	3 (0%)	39	80

All (3) Ramachandran outliers are listed below:

Mol	Chain	Res	Type
1	B	285	ARG
1	D	243	PRO
1	B	242	ASN

5.3.2 Protein sidechains ⓘ

In the following table, the Percentiles column shows the percent sidechain outliers of the chain as a percentile score with respect to all X-ray entries followed by that with respect to entries of similar resolution.

The Analysed column shows the number of residues for which the sidechain conformation was analysed, and the total number of residues.

Mol	Chain	Analysed	Rotameric	Outliers	Percentiles	
1	A	170/185 (92%)	169 (99%)	1 (1%)	90	97
1	B	167/185 (90%)	167 (100%)	0	100	100
1	C	168/185 (91%)	168 (100%)	0	100	100
1	D	172/185 (93%)	169 (98%)	3 (2%)	68	91
All	All	677/740 (92%)	673 (99%)	4 (1%)	90	97

All (4) residues with a non-rotameric sidechain are listed below:

Mol	Chain	Res	Type
1	A	285	ARG
1	D	284	THR
1	D	288	GLU
1	D	422	GLN

Some sidechains can be flipped to improve hydrogen bonding and reduce clashes. All (4) such sidechains are listed below:

Mol	Chain	Res	Type
1	B	407	ASN
1	B	422	GLN
1	C	384	ASN
1	D	384	ASN

5.3.3 RNA [i](#)

There are no RNA molecules in this entry.

5.4 Non-standard residues in protein, DNA, RNA chains [i](#)

There are no non-standard protein/DNA/RNA residues in this entry.

5.5 Carbohydrates [i](#)

There are no carbohydrates in this entry.

5.6 Ligand geometry [i](#)

6 ligands are modelled in this entry.

In the following table, the Counts columns list the number of bonds (or angles) for which Mogul statistics could be retrieved, the number of bonds (or angles) that are observed in the model and the number of bonds (or angles) that are defined in the chemical component dictionary. The Link column lists molecule types, if any, to which the group is linked. The Z score for a bond length (or angle) is the number of standard deviations the observed value is removed from the expected value. A bond length (or angle) with $|Z| > 2$ is considered an outlier worth inspection. RMSZ is the root-mean-square of all Z scores of the bond lengths (or angles).

Mol	Type	Chain	Res	Link	Bond lengths			Bond angles		
					Counts	RMSZ	$\# Z > 2$	Counts	RMSZ	$\# Z > 2$
2	NAG	A	501	1	14,14,15	0.33	0	15,19,21	0.30	0
2	NAG	A	502	1	14,14,15	0.62	1 (7%)	15,19,21	1.31	1 (6%)
2	NAG	A	503	1	14,14,15	0.33	0	15,19,21	0.32	0
2	NAG	C	501	1	14,14,15	0.32	0	15,19,21	0.34	0
2	NAG	D	501	1	14,14,15	0.25	0	15,19,21	0.38	0
2	NAG	D	502	1	14,14,15	0.62	0	15,19,21	0.59	0

In the following table, the Chirals column lists the number of chiral outliers, the number of chiral

centers analysed, the number of these observed in the model and the number defined in the chemical component dictionary. Similar counts are reported in the Torsion and Rings columns. '-' means no outliers of that kind were identified.

Mol	Type	Chain	Res	Link	Chirals	Torsions	Rings
2	NAG	A	501	1	-	0/6/23/26	0/1/1/1
2	NAG	A	502	1	-	0/6/23/26	0/1/1/1
2	NAG	A	503	1	-	0/6/23/26	0/1/1/1
2	NAG	C	501	1	-	0/6/23/26	0/1/1/1
2	NAG	D	501	1	-	0/6/23/26	0/1/1/1
2	NAG	D	502	1	-	0/6/23/26	0/1/1/1

All (1) bond length outliers are listed below:

Mol	Chain	Res	Type	Atoms	Z	Observed(Å)	Ideal(Å)
2	A	502	NAG	C1-C2	2.13	1.55	1.52

All (1) bond angle outliers are listed below:

Mol	Chain	Res	Type	Atoms	Z	Observed(°)	Ideal(°)
2	A	502	NAG	C1-O5-C5	4.83	118.38	112.25

There are no chirality outliers.

There are no torsion outliers.

There are no ring outliers.

3 monomers are involved in 3 short contacts:

Mol	Chain	Res	Type	Clashes	Symm-Clashes
2	A	502	NAG	1	0
2	C	501	NAG	1	0
2	D	501	NAG	1	0

5.7 Other polymers [i](#)

There are no such residues in this entry.

5.8 Polymer linkage issues [i](#)

There are no chain breaks in this entry.

6 Fit of model and data ⓘ

6.1 Protein, DNA and RNA chains ⓘ

In the following table, the column labelled ‘#RSRZ> 2’ contains the number (and percentage) of RSRZ outliers, followed by percent RSRZ outliers for the chain as percentile scores relative to all X-ray entries and entries of similar resolution. The OWAB column contains the minimum, median, 95th percentile and maximum values of the occupancy-weighted average B-factor per residue. The column labelled ‘Q< 0.9’ lists the number of (and percentage) of residues with an average occupancy less than 0.9.

Mol	Chain	Analysed	<RSRZ>	#RSRZ>2	OWAB(Å ²)	Q<0.9
1	A	197/208 (94%)	0.26	5 (2%) 61 30	77, 120, 222, 280	0
1	B	194/208 (93%)	0.58	20 (10%) 9 3	63, 122, 272, 334	0
1	C	193/208 (92%)	0.71	20 (10%) 8 3	94, 164, 274, 307	0
1	D	197/208 (94%)	0.43	10 (5%) 32 12	69, 120, 221, 262	0
All	All	781/832 (93%)	0.49	55 (7%) 19 7	63, 133, 255, 334	0

All (55) RSRZ outliers are listed below:

Mol	Chain	Res	Type	RSRZ
1	C	282	LEU	5.9
1	C	284	THR	5.8
1	C	310	ALA	5.7
1	B	258	VAL	5.0
1	C	302	ASN	4.6
1	B	293	TYR	4.4
1	B	234	ASP	4.4
1	B	254	ILE	4.2
1	C	258	VAL	4.1
1	D	284	THR	4.1
1	D	267	VAL	4.0
1	D	282	LEU	3.9
1	C	289	ILE	3.8
1	B	267	VAL	3.6
1	D	268	PHE	3.4
1	B	289	ILE	3.4
1	B	268	PHE	3.4
1	C	265	PRO	3.3
1	C	287	LYS	3.2
1	C	309	ARG	3.2
1	C	266	ASP	3.2

Continued on next page...

Continued from previous page...

Mol	Chain	Res	Type	RSRZ
1	C	322	ALA	3.1
1	A	408	VAL	3.1
1	D	260	GLY	3.1
1	B	255	ALA	3.0
1	D	322	ALA	3.0
1	D	318	PRO	2.8
1	C	236	THR	2.8
1	D	266	ASP	2.8
1	B	262	ASN	2.7
1	D	310	ALA	2.7
1	B	295	PHE	2.6
1	C	268	PHE	2.6
1	A	300	ASN	2.5
1	B	322	ALA	2.4
1	C	325	LEU	2.4
1	C	306	TYR	2.4
1	C	380	PHE	2.4
1	B	252	VAL	2.3
1	B	259	THR	2.3
1	B	257	SER	2.3
1	C	264	PRO	2.3
1	A	233	SER	2.3
1	A	232	PRO	2.2
1	B	273	ASN	2.2
1	A	407	ASN	2.2
1	C	234	ASP	2.1
1	B	266	ASP	2.1
1	C	290	LYS	2.1
1	B	265	PRO	2.1
1	B	236	THR	2.1
1	B	246	LEU	2.1
1	C	326	GLU	2.0
1	D	319	LYS	2.0
1	B	286	SER	2.0

6.2 Non-standard residues in protein, DNA, RNA chains ⓘ

There are no non-standard protein/DNA/RNA residues in this entry.

6.3 Carbohydrates [i](#)

There are no carbohydrates in this entry.

6.4 Ligands [i](#)

In the following table, the Atoms column lists the number of modelled atoms in the group and the number defined in the chemical component dictionary. LLDF column lists the quality of electron density of the group with respect to its neighbouring residues in protein, DNA or RNA chains. The B-factors column lists the minimum, median, 95th percentile and maximum values of B factors of atoms in the group. The column labelled 'Q< 0.9' lists the number of atoms with occupancy less than 0.9.

Mol	Type	Chain	Res	Atoms	RSCC	RSR	LLDF	B-factors(Å ²)	Q<0.9
2	NAG	A	501	14/15	0.80	0.28	2.47	96,141,171,177	0
2	NAG	A	502	14/15	0.88	0.29	0.51	92,128,192,195	0
2	NAG	C	501	14/15	0.89	0.21	-0.26	107,138,184,189	0
2	NAG	D	502	14/15	0.91	0.19	-0.53	67,98,182,207	0
2	NAG	D	501	14/15	0.89	0.16	-0.97	87,138,183,192	0
2	NAG	A	503	14/15	0.77	0.23	-	121,161,203,211	0

6.5 Other polymers [i](#)

There are no such residues in this entry.