



Full wwPDB X-ray Structure Validation Report ⓘ

Feb 1, 2016 – 04:53 AM GMT

PDB ID : 2OK4
Title : Crystal structure of aromatic amine dehydrogenase TTQ-phenylacetaldehyde adduct oxidized with ferricyanide
Authors : Roujeinikova, A.; Leys, D.
Deposited on : 2007-01-16
Resolution : 1.45 Å(reported)

This is a Full wwPDB X-ray Structure Validation Report for a publicly released PDB entry.
We welcome your comments at validation@mail.wwpdb.org
A user guide is available at
<http://wwpdb.org/validation/2016/XrayValidationReportHelp>
with specific help available everywhere you see the ⓘ symbol.

The following versions of software and data (see [references ⓘ](#)) were used in the production of this report:

MolProbity : 4.02b-467
Mogul : 1.7 (RC4), CSD as536be (2015)
Xtriage (Phenix) : 1.9-1692
EDS : rb-20026688
Percentile statistics : 20151230.v01 (using entries in the PDB archive December 30th 2015)
Refmac : 5.8.0135
CCP4 : 6.5.0
Ideal geometry (proteins) : Engh & Huber (2001)
Ideal geometry (DNA, RNA) : Parkinson et al. (1996)
Validation Pipeline (wwPDB-VP) : trunk26865

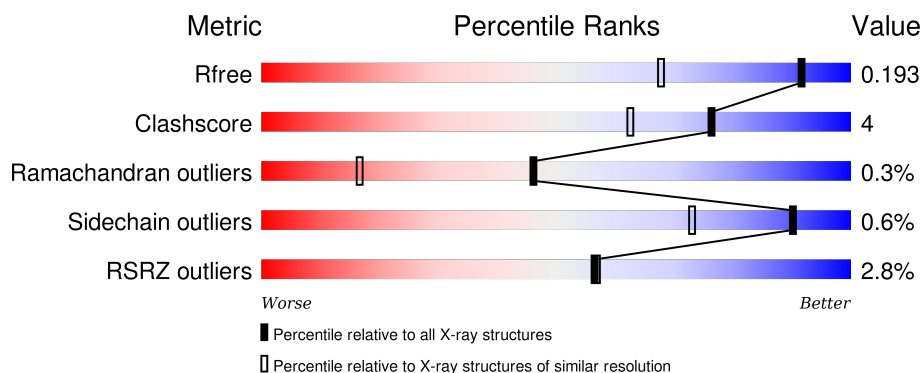
1 Overall quality at a glance ⓘ

The following experimental techniques were used to determine the structure:

X-RAY DIFFRACTION

The reported resolution of this entry is 1.45 Å.

Percentile scores (ranging between 0-100) for global validation metrics of the entry are shown in the following graphic. The table shows the number of entries on which the scores are based.



Metric	Whole archive (#Entries)	Similar resolution (#Entries, resolution range(Å))
R_{free}	91344	1278 (1.48-1.44)
Clashscore	102246	1336 (1.48-1.44)
Ramachandran outliers	100387	1320 (1.48-1.44)
Sidechain outliers	100360	1320 (1.48-1.44)
RSRZ outliers	91569	1279 (1.48-1.44)

The table below summarises the geometric issues observed across the polymeric chains and their fit to the electron density. The red, orange, yellow and green segments on the lower bar indicate the fraction of residues that contain outliers for ≥ 3 , 2, 1 and 0 types of geometric quality criteria. A grey segment represents the fraction of residues that are not modelled. The numeric value for each fraction is indicated below the corresponding segment, with a dot representing fractions $\leq 5\%$. The upper red bar (where present) indicates the fraction of residues that have poor fit to the electron density. The numeric value is given above the bar.

Mol	Chain	Length	Quality of chain
1	D	135	<div> <div>11%</div> <div>71% 10% 19%</div> </div>
1	H	135	<div> <div>11%</div> <div>81% 8% 10%</div> </div>
2	A	361	<div> <div>2%</div> <div>91% 9%</div> </div>
2	B	361	<div> <div>2%</div> <div>93% 7%</div> </div>

2 Entry composition

There are 4 unique types of molecules in this entry. The entry contains 8560 atoms, of which 0 are hydrogens and 0 are deuteriums.

In the tables below, the ZeroOcc column contains the number of atoms modelled with zero occupancy, the AltConf column contains the number of residues with at least one atom in alternate conformation and the Trace column contains the number of residues modelled with at most 2 atoms.

- Molecule 1 is a protein called Aromatic amine dehydrogenase, small subunit.

Mol	Chain	Residues	Atoms					ZeroOcc	AltConf	Trace
1	D	110	Total	C	N	O	S	0	5	0
			863	529	152	167	15			
1	H	122	Total	C	N	O	S	0	5	0
			962	589	167	191	15			

There are 2 discrepancies between the modelled and reference sequences:

Chain	Residue	Modelled	Actual	Comment	Reference
H	109	TQQ	TRP	MODIFIED RESIDUE	UNP Q0VKG6
D	109	TQQ	TRP	MODIFIED RESIDUE	UNP Q0VKG6

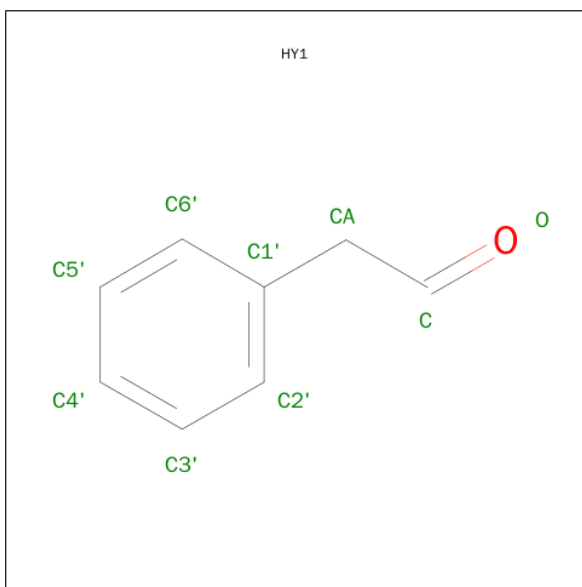
- Molecule 2 is a protein called Aromatic amine dehydrogenase, large subunit.

Mol	Chain	Residues	Atoms					ZeroOcc	AltConf	Trace
2	A	360	Total	C	N	O	S	0	9	0
			2840	1796	492	538	14			
2	B	361	Total	C	N	O	S	0	5	0
			2826	1781	493	538	14			

There are 2 discrepancies between the modelled and reference sequences:

Chain	Residue	Modelled	Actual	Comment	Reference
A	433	THR	VAL	CONFLICT	UNP Q0VKG7
B	433	THR	VAL	CONFLICT	UNP Q0VKG7

- Molecule 3 is PHENYLACETALDEHYDE (three-letter code: HY1) (formula: C₈H₈O).



Mol	Chain	Residues	Atoms			ZeroOcc	AltConf
3	D	1	Total	C	O	0	0
			9	8	1		
3	H	1	Total	C	O	0	0
			9	8	1		

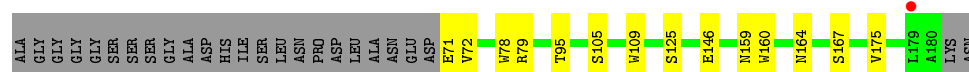
- Molecule 4 is water.

Mol	Chain	Residues	Atoms		ZeroOcc	AltConf
4	D	103	Total	O	0	0
			103	103		
4	H	95	Total	O	0	0
			95	95		
4	A	460	Total	O	0	0
			460	460		
4	B	393	Total	O	0	0
			393	393		

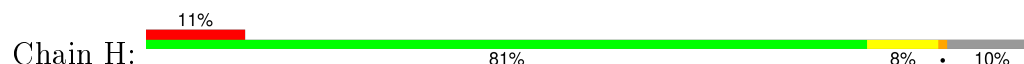
3 Residue-property plots [i](#)

These plots are drawn for all protein, RNA and DNA chains in the entry. The first graphic for a chain summarises the proportions of errors displayed in the second graphic. The second graphic shows the sequence view annotated by issues in geometry and electron density. Residues are color-coded according to the number of geometric quality criteria for which they contain at least one outlier: green = 0, yellow = 1, orange = 2 and red = 3 or more. A red dot above a residue indicates a poor fit to the electron density ($RSRZ > 2$). Stretches of 2 or more consecutive residues without any outlier are shown as a green connector. Residues present in the sample, but not in the model, are shown in grey.

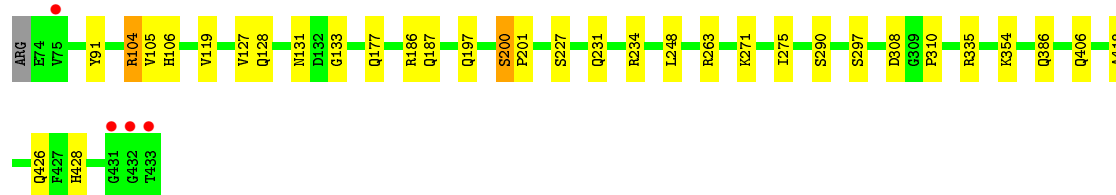
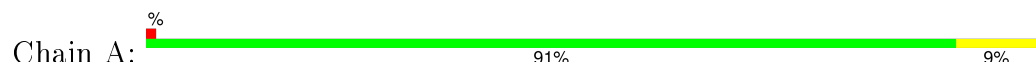
- Molecule 1: Aromatic amine dehydrogenase, small subunit



- Molecule 1: Aromatic amine dehydrogenase, small subunit



- Molecule 2: Aromatic amine dehydrogenase, large subunit



- Molecule 2: Aromatic amine dehydrogenase, large subunit



4 Data and refinement statistics

Property	Value	Source
Space group	P 1 21 1	Depositor
Cell constants a, b, c, α , β , γ	70.81Å 88.96Å 81.02Å 90.00° 90.31° 90.00°	Depositor
Resolution (Å)	15.00 – 1.45 19.97 – 1.40	Depositor EDS
% Data completeness (in resolution range)	100.0 (15.00-1.45) 81.0 (19.97-1.40)	Depositor EDS
R_{merge}	(Not available)	Depositor
R_{sym}	(Not available)	Depositor
$\langle I/\sigma(I) \rangle$ ¹	1.73 (at 1.40Å)	Xtriage
Refinement program	REFMAC 5.2.0005	Depositor
R, R_{free}	0.154 , 0.188 0.162 , 0.193	Depositor DCC
R_{free} test set	7491 reflections (5.27%)	DCC
Wilson B-factor (Å ²)	14.6	Xtriage
Anisotropy	0.204	Xtriage
Bulk solvent k_{sol} (e/Å ³), B_{sol} (Å ²)	0.38 , 51.2	EDS
Estimated twinning fraction	0.033 for h,-k,-l	Xtriage
L-test for twinning ²	$\langle L \rangle = 0.49$, $\langle L^2 \rangle = 0.32$	Xtriage
Outliers	0 of 158792 reflections	Xtriage
F_o, F_c correlation	0.97	EDS
Total number of atoms	8560	wwPDB-VP
Average B, all atoms (Å ²)	18.0	wwPDB-VP

Xtriage's analysis on translational NCS is as follows: *The largest off-origin peak in the Patterson function is 4.73% of the height of the origin peak. No significant pseudotranslation is detected.*

¹Intensities estimated from amplitudes.

²Theoretical values of $\langle |L| \rangle$, $\langle L^2 \rangle$ for acentric reflections are 0.5, 0.375 respectively for untwinned datasets, and 0.333, 0.2 for perfectly twinned datasets.

5 Model quality

5.1 Standard geometry

Bond lengths and bond angles in the following residue types are not validated in this section: HY1, TQQ

The Z score for a bond length (or angle) is the number of standard deviations the observed value is removed from the expected value. A bond length (or angle) with $|Z| > 5$ is considered an outlier worth inspection. RMSZ is the root-mean-square of all Z scores of the bond lengths (or angles).

Mol	Chain	Bond lengths		Bond angles	
		RMSZ	$\# Z > 5$	RMSZ	$\# Z > 5$
1	D	0.58	0/885	0.55	0/1205
1	H	0.61	0/973	0.53	0/1328
2	A	0.61	0/2936	0.57	0/3977
2	B	0.54	0/2906	0.55	0/3937
All	All	0.58	0/7700	0.55	0/10447

Chiral center outliers are detected by calculating the chiral volume of a chiral center and verifying if the center is modelled as a planar moiety or with the opposite hand. A planarity outlier is detected by checking planarity of atoms in a peptide group, atoms in a mainchain group or atoms of a sidechain that are expected to be planar.

Mol	Chain	#Chirality outliers	#Planarity outliers
2	A	0	1
2	B	0	1
All	All	0	2

There are no bond length outliers.

There are no bond angle outliers.

There are no chirality outliers.

All (2) planarity outliers are listed below:

Mol	Chain	Res	Type	Group
2	A	310	PRO	Peptide
2	B	310	PRO	Peptide

5.2 Too-close contacts ⓘ

In the following table, the Non-H and H(model) columns list the number of non-hydrogen atoms and hydrogen atoms in the chain respectively. The H(added) column lists the number of hydrogen atoms added and optimized by MolProbity. The Clashes column lists the number of clashes within the asymmetric unit, whereas Symm-Clashes lists symmetry related clashes.

Mol	Chain	Non-H	H(model)	H(added)	Clashes	Symm-Clashes
1	D	863	0	774	11	0
1	H	962	0	848	11	0
2	A	2840	0	2805	24	0
2	B	2826	0	2758	17	0
3	D	9	0	7	0	0
3	H	9	0	7	0	0
4	A	460	0	0	1	0
4	B	393	0	0	0	0
4	D	103	0	0	3	0
4	H	95	0	0	2	0
All	All	8560	0	7199	56	0

The all-atom clashscore is defined as the number of clashes found per 1000 atoms (including hydrogen atoms). The all-atom clashscore for this structure is 4.

All (56) close contacts within the same asymmetric unit are listed below, sorted by their clash magnitude.

Atom-1	Atom-2	Interatomic distance (Å)	Clash overlap (Å)
1:H:173[A]:THR:HA	4:H:2038:HOH:O	1.64	0.96
2:B:124:ASN:HD21	2:B:178:GLY:H	1.30	0.80
4:H:2075:HOH:O	2:B:118[B]:MET:SD	2.43	0.76
1:H:105:SER:HA	1:H:164:ASN:HD21	1.52	0.74
2:A:105[B]:VAL:CG2	2:A:119:VAL:HB	2.18	0.73
2:B:104:ARG:HH11	2:B:106:HIS:HE1	1.36	0.72
2:A:104:ARG:HH11	2:A:106:HIS:HE1	1.37	0.72
2:A:91:TYR:OH	2:A:428:HIS:HD2	1.72	0.72
1:D:105:SER:HA	1:D:164:ASN:HD21	1.57	0.69
2:B:91:TYR:OH	2:B:428:HIS:HD2	1.78	0.67
1:D:71:GLU:N	4:D:2096:HOH:O	2.27	0.67
2:A:105[B]:VAL:HG22	2:A:119:VAL:HB	1.79	0.63
2:B:197:GLN:NE2	2:B:227:SER:H	1.96	0.63
2:A:91:TYR:OH	2:A:428:HIS:CD2	2.52	0.62
2:A:197:GLN:NE2	2:A:227:SER:H	1.98	0.61
2:A:335:ARG:H	2:A:386:GLN:HE22	1.47	0.61
2:B:197:GLN:HE21	2:B:227:SER:H	1.51	0.57

Continued on next page...

Continued from previous page...

Atom-1	Atom-2	Interatomic distance (Å)	Clash overlap (Å)
2:A:335:ARG:H	2:A:386:GLN:NE2	2.03	0.56
1:H:109:TQQ:HB2	1:H:160:TRP:NE1	2.21	0.56
2:A:248:LEU:HD13	2:A:263:ARG:HD3	1.88	0.55
1:D:167:SER:HB2	2:B:177:GLN:HE22	1.70	0.54
2:A:197:GLN:HE21	2:A:227:SER:H	1.56	0.54
1:D:72[B]:VAL:HG22	4:D:2088:HOH:O	2.08	0.54
2:B:106:HIS:HD2	2:B:418:ALA:O	1.93	0.53
1:H:167:SER:HB2	2:A:177:GLN:HE22	1.76	0.51
1:H:176[B]:LEU:HD12	2:B:73[B]:ARG:HD3	1.93	0.51
1:D:159:ASN:HD22	2:B:177:GLN:NE2	2.09	0.51
2:A:297[B]:SER:OG	2:A:308:ASP:OD2	2.29	0.50
1:H:109:TQQ:HB2	1:H:160:TRP:HE1	1.78	0.49
1:H:68:ASN:HD22	1:H:69:GLU:N	2.10	0.49
1:D:109:TQQ:HB2	1:D:160:TRP:NE1	2.29	0.48
2:A:106:HIS:HD2	2:A:418:ALA:O	1.97	0.48
1:D:146:GLU:CD	2:B:354:LYS:HZ1	2.19	0.46
2:B:275:ILE:HA	2:B:290:SER:HA	1.98	0.45
2:A:131:ASN:H	2:A:187:GLN:HE22	1.64	0.45
2:A:105[B]:VAL:HG11	2:A:127:VAL:HG21	1.98	0.45
2:B:128:GLN:HE22	2:B:186:ARG:C	2.21	0.44
1:D:72[B]:VAL:CG2	1:D:95[B]:THR:CG2	2.95	0.44
2:A:200:SER:N	2:A:201:PRO:HA	2.32	0.44
2:B:335:ARG:H	2:B:386:GLN:NE2	2.15	0.44
2:A:275:ILE:HA	2:A:290:SER:HA	1.99	0.44
2:A:128:GLN:HE22	2:A:186:ARG:C	2.22	0.43
2:A:271:LYS:HA	2:A:271:LYS:HD2	1.85	0.43
1:D:125[B]:SER:OG	1:D:175:VAL:HB	2.19	0.43
1:H:155:HIS:HE1	4:A:449:HOH:O	2.01	0.43
2:A:186:ARG:HH22	2:A:426:GLN:NE2	2.17	0.43
1:D:72[B]:VAL:HG21	1:D:95[B]:THR:CG2	2.49	0.42
2:B:335:ARG:H	2:B:386:GLN:HE22	1.65	0.42
2:A:133:GLY:O	2:A:428:HIS:HE1	2.02	0.42
1:D:78:TRP:CE2	1:D:79[B]:ARG:HG3	2.55	0.42
2:A:231:GLN:NE2	2:A:234:ARG:HH11	2.18	0.42
1:H:159:ASN:HD22	2:A:177:GLN:NE2	2.18	0.41
4:D:2014:HOH:O	2:B:143:HIS:HE1	2.03	0.41
1:H:146:GLU:CD	2:A:354:LYS:HZ1	2.23	0.41
2:B:186:ARG:HH22	2:B:426:GLN:NE2	2.20	0.40

There are no symmetry-related clashes.

5.3 Torsion angles

5.3.1 Protein backbone

In the following table, the Percentiles column shows the percent Ramachandran outliers of the chain as a percentile score with respect to all X-ray entries followed by that with respect to entries of similar resolution.

The Analysed column shows the number of residues for which the backbone conformation was analysed, and the total number of residues.

Mol	Chain	Analysed	Favoured	Allowed	Outliers	Percentiles	
1	D	112/135 (83%)	110 (98%)	2 (2%)	0	100	100
1	H	124/135 (92%)	121 (98%)	3 (2%)	0	100	100
2	A	367/361 (102%)	355 (97%)	11 (3%)	1 (0%)	46	17
2	B	362/361 (100%)	349 (96%)	11 (3%)	2 (1%)	30	6
All	All	965/992 (97%)	935 (97%)	27 (3%)	3 (0%)	46	17

All (3) Ramachandran outliers are listed below:

Mol	Chain	Res	Type
2	B	216	VAL
2	A	200	SER
2	B	200	SER

5.3.2 Protein sidechains

In the following table, the Percentiles column shows the percent sidechain outliers of the chain as a percentile score with respect to all X-ray entries followed by that with respect to entries of similar resolution.

The Analysed column shows the number of residues for which the sidechain conformation was analysed, and the total number of residues.

Mol	Chain	Analysed	Rotameric	Outliers	Percentiles	
1	D	100/112 (89%)	100 (100%)	0	100	100
1	H	109/112 (97%)	108 (99%)	1 (1%)	84	60
2	A	313/305 (103%)	310 (99%)	3 (1%)	82	56
2	B	308/305 (101%)	306 (99%)	2 (1%)	90	73
All	All	830/834 (100%)	824 (99%)	6 (1%)	90	69

All (6) residues with a non-rotameric sidechain are listed below:

Mol	Chain	Res	Type
1	H	68	ASN
2	A	104	ARG
2	A	406[A]	GLN
2	A	406[B]	GLN
2	B	104	ARG
2	B	388	ARG

Some sidechains can be flipped to improve hydrogen bonding and reduce clashes. All (36) such sidechains are listed below:

Mol	Chain	Res	Type
1	D	139	GLN
1	D	143	GLN
1	D	164	ASN
1	H	68	ASN
1	H	143	GLN
1	H	155	HIS
1	H	164	ASN
2	A	86	GLN
2	A	106	HIS
2	A	128	GLN
2	A	143	HIS
2	A	177	GLN
2	A	180	ASN
2	A	187	GLN
2	A	197	GLN
2	A	231	GLN
2	A	261	GLN
2	A	386	GLN
2	A	387	GLN
2	A	424	GLN
2	A	426	GLN
2	A	428	HIS
2	B	86	GLN
2	B	106	HIS
2	B	124	ASN
2	B	128	GLN
2	B	143	HIS
2	B	177	GLN
2	B	180	ASN
2	B	187	GLN
2	B	197	GLN
2	B	231	GLN
2	B	386	GLN

Continued on next page...

Continued from previous page...

Mol	Chain	Res	Type
2	B	424	GLN
2	B	426	GLN
2	B	428	HIS

5.3.3 RNA ⓘ

There are no RNA molecules in this entry.

5.4 Non-standard residues in protein, DNA, RNA chains ⓘ

2 non-standard protein/DNA/RNA residues are modelled in this entry.

In the following table, the Counts columns list the number of bonds (or angles) for which Mogul statistics could be retrieved, the number of bonds (or angles) that are observed in the model and the number of bonds (or angles) that are defined in the chemical component dictionary. The Link column lists molecule types, if any, to which the group is linked. The Z score for a bond length (or angle) is the number of standard deviations the observed value is removed from the expected value. A bond length (or angle) with $|Z| > 2$ is considered an outlier worth inspection. RMSZ is the root-mean-square of all Z scores of the bond lengths (or angles).

Mol	Type	Chain	Res	Link	Bond lengths			Bond angles		
					Counts	RMSZ	# Z > 2	Counts	RMSZ	# Z > 2
1	TQQ	D	109	1,3	14,17,18	4.11	6 (42%)	8,24,26	1.77	3 (37%)
1	TQQ	H	109	1,3	14,17,18	4.15	6 (42%)	8,24,26	1.76	2 (25%)

In the following table, the Chirals column lists the number of chiral outliers, the number of chiral centers analysed, the number of these observed in the model and the number defined in the chemical component dictionary. Similar counts are reported in the Torsion and Rings columns. '-' means no outliers of that kind were identified.

Mol	Type	Chain	Res	Link	Chirals	Torsions	Rings
1	TQQ	D	109	1,3	-	0/3/19/21	0/2/2/2
1	TQQ	H	109	1,3	-	0/3/19/21	0/2/2/2

All (12) bond length outliers are listed below:

Mol	Chain	Res	Type	Atoms	Z	Observed(Å)	Ideal(Å)
1	H	109	TQQ	CE2-CZ2	-8.80	1.39	1.49
1	D	109	TQQ	CE2-CZ2	-8.31	1.39	1.49
1	H	109	TQQ	CH2-CZ2	-5.44	1.36	1.50
1	D	109	TQQ	CH2-CZ2	-5.24	1.36	1.50

Continued on next page...

Continued from previous page...

Mol	Chain	Res	Type	Atoms	Z	Observed(Å)	Ideal(Å)
1	H	109	TQQ	CZ3-CH2	-2.51	1.40	1.44
1	D	109	TQQ	CZ3-CH2	-2.07	1.41	1.44
1	H	109	TQQ	CZ3-CE3	3.55	1.40	1.34
1	D	109	TQQ	CZ3-CE3	4.53	1.41	1.34
1	H	109	TQQ	CD2-CG	4.74	1.46	1.40
1	D	109	TQQ	CD2-CG	5.28	1.47	1.40
1	D	109	TQQ	O2-CZ2	8.99	1.42	1.23
1	H	109	TQQ	O2-CZ2	9.05	1.42	1.23

All (5) bond angle outliers are listed below:

Mol	Chain	Res	Type	Atoms	Z	Observed(°)	Ideal(°)
1	H	109	TQQ	CD2-CE3-CZ3	-2.76	118.07	121.16
1	D	109	TQQ	CD2-CE3-CZ3	-2.62	118.23	121.16
1	D	109	TQQ	O2-CZ2-CE2	-2.16	119.70	122.10
1	H	109	TQQ	O2-CZ2-CE2	-2.01	119.86	122.10
1	D	109	TQQ	CD1-NE1-CE2	2.01	109.55	104.34

There are no chirality outliers.

There are no torsion outliers.

There are no ring outliers.

2 monomers are involved in 3 short contacts:

Mol	Chain	Res	Type	Clashes	Symm-Clashes
1	D	109	TQQ	1	0
1	H	109	TQQ	2	0

5.5 Carbohydrates [i](#)

There are no carbohydrates in this entry.

5.6 Ligand geometry [i](#)

2 ligands are modelled in this entry.

In the following table, the Counts columns list the number of bonds (or angles) for which Mogul statistics could be retrieved, the number of bonds (or angles) that are observed in the model and the number of bonds (or angles) that are defined in the chemical component dictionary. The Link column lists molecule types, if any, to which the group is linked. The Z score for a bond length (or angle) is the number of standard deviations the observed value is removed from the expected

value. A bond length (or angle) with $|Z| > 2$ is considered an outlier worth inspection. RMSZ is the root-mean-square of all Z scores of the bond lengths (or angles).

Mol	Type	Chain	Res	Link	Bond lengths			Bond angles		
					Counts	RMSZ	$\# Z > 2$	Counts	RMSZ	$\# Z > 2$
3	HY1	D	2002	1	9,9,9	0.48	0	9,10,10	0.36	0
3	HY1	H	2001	1	9,9,9	0.51	0	9,10,10	0.33	0

In the following table, the Chirals column lists the number of chiral outliers, the number of chiral centers analysed, the number of these observed in the model and the number defined in the chemical component dictionary. Similar counts are reported in the Torsion and Rings columns. '-' means no outliers of that kind were identified.

Mol	Type	Chain	Res	Link	Chirals	Torsions	Rings
3	HY1	D	2002	1	-	0/3/3/3	0/1/1/1
3	HY1	H	2001	1	-	0/3/3/3	0/1/1/1

There are no bond length outliers.

There are no bond angle outliers.

There are no chirality outliers.

There are no torsion outliers.

There are no ring outliers.

No monomer is involved in short contacts.

5.7 Other polymers [i](#)

There are no such residues in this entry.

5.8 Polymer linkage issues [i](#)

There are no chain breaks in this entry.

6 Fit of model and data ⓘ

6.1 Protein, DNA and RNA chains ⓘ

In the following table, the column labelled ‘#RSRZ> 2’ contains the number (and percentage) of RSRZ outliers, followed by percent RSRZ outliers for the chain as percentile scores relative to all X-ray entries and entries of similar resolution. The OWAB column contains the minimum, median, 95th percentile and maximum values of the occupancy-weighted average B-factor per residue. The column labelled ‘Q< 0.9’ lists the number of (and percentage) of residues with an average occupancy less than 0.9.

Mol	Chain	Analysed	<RSRZ>	#RSRZ>2	OWAB(Å ²)	Q<0.9
1	D	109/135 (80%)	-0.19	1 (0%) 85 87	11, 17, 24, 29	0
1	H	121/135 (89%)	0.41	15 (12%) 5 5	11, 17, 38, 40	0
2	A	360/361 (99%)	-0.30	4 (1%) 82 84	9, 14, 22, 33	0
2	B	361/361 (100%)	-0.06	7 (1%) 70 71	10, 19, 30, 38	0
All	All	951/992 (95%)	-0.11	27 (2%) 56 57	9, 16, 29, 40	0

All (27) RSRZ outliers are listed below:

Mol	Chain	Res	Type	RSRZ
1	H	60	ILE	9.9
1	H	66	LEU	8.4
1	H	67	ALA	5.4
1	H	68	ASN	5.2
2	B	303	ASP	4.6
1	H	59	HIS	4.5
1	H	70	ASP	4.3
2	B	433[A]	THR	4.1
2	B	73[A]	ARG	4.1
1	H	63	ASN	3.8
2	A	75	VAL	3.7
2	A	433	THR	3.7
2	A	431	GLY	3.3
1	H	180	ALA	3.2
1	H	117	HIS	3.1
2	A	432	GLY	3.0
1	D	179	LEU	2.9
1	H	69	GLU	2.7
2	B	302	GLY	2.5
2	B	432	GLY	2.4
1	H	61	SER	2.4

Continued on next page...

Continued from previous page...

Mol	Chain	Res	Type	RSRZ
2	B	306	LYS	2.4
1	H	116	PRO	2.4
1	H	62	LEU	2.3
1	H	179	LEU	2.2
1	H	65	ASP	2.2
2	B	263	ARG	2.1

6.2 Non-standard residues in protein, DNA, RNA chains [i](#)

In the following table, the Atoms column lists the number of modelled atoms in the group and the number defined in the chemical component dictionary. LLDF column lists the quality of electron density of the group with respect to its neighbouring residues in protein, DNA or RNA chains. The B-factors column lists the minimum, median, 95th percentile and maximum values of B factors of atoms in the group. The column labelled 'Q< 0.9' lists the number of atoms with occupancy less than 0.9.

Mol	Type	Chain	Res	Atoms	RSCC	RSR	LLDF	B-factors(Å ²)	Q<0.9
1	TQQ	D	109	16/17	0.92	0.08	-	16,17,18,19	0
1	TQQ	H	109	16/17	0.97	0.06	-	12,14,17,18	0

6.3 Carbohydrates [i](#)

There are no carbohydrates in this entry.

6.4 Ligands [i](#)

In the following table, the Atoms column lists the number of modelled atoms in the group and the number defined in the chemical component dictionary. LLDF column lists the quality of electron density of the group with respect to its neighbouring residues in protein, DNA or RNA chains. The B-factors column lists the minimum, median, 95th percentile and maximum values of B factors of atoms in the group. The column labelled 'Q< 0.9' lists the number of atoms with occupancy less than 0.9.

Mol	Type	Chain	Res	Atoms	RSCC	RSR	LLDF	B-factors(Å ²)	Q<0.9
3	HY1	D	2002	9/9	0.91	0.09	1.94	19,21,22,23	0
3	HY1	H	2001	9/9	0.95	0.09	1.67	15,19,21,22	0

6.5 Other polymers [i](#)

There are no such residues in this entry.