



# Full wwPDB X-ray Structure Validation Report ⓘ

Feb 1, 2016 – 04:53 AM GMT

PDB ID : 2OLK  
Title : ABC Protein ArtP in complex with ADP-beta-S  
Authors : Thaben, P.F.; Eckey, V.; Scheffel, F.; Saenger, W.; Schneider, E.; Vahedi-Faridi, A.  
Deposited on : 2007-01-19  
Resolution : 2.10 Å(reported)

This is a Full wwPDB X-ray Structure Validation Report for a publicly released PDB entry.  
We welcome your comments at [validation@mail.wwpdb.org](mailto:validation@mail.wwpdb.org)  
A user guide is available at  
<http://wwpdb.org/validation/2016/XrayValidationReportHelp>  
with specific help available everywhere you see the ⓘ symbol.

---

The following versions of software and data (see [references ⓘ](#)) were used in the production of this report:

MolProbity : 4.02b-467  
Mogul : 1.7 (RC4), CSD as536be (2015)  
Xtriage (Phenix) : 1.9-1692  
EDS : rb-20026688  
Percentile statistics : 20151230.v01 (using entries in the PDB archive December 30th 2015)  
Refmac : 5.8.0135  
CCP4 : 6.5.0  
Ideal geometry (proteins) : Engh & Huber (2001)  
Ideal geometry (DNA, RNA) : Parkinson et al. (1996)  
Validation Pipeline (wwPDB-VP) : trunk26865

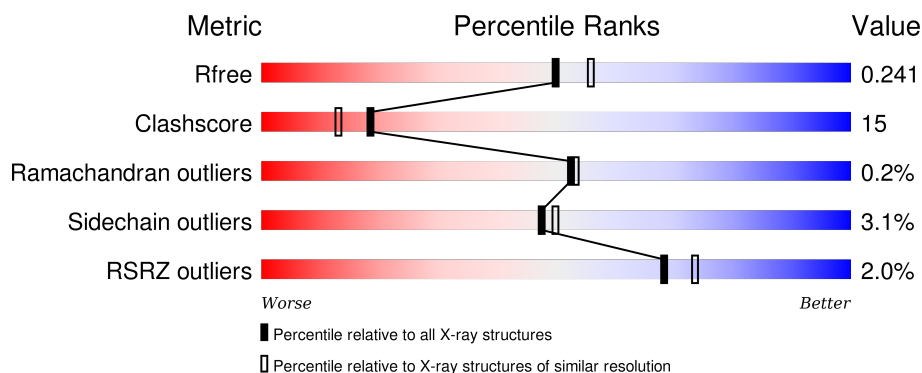
# 1 Overall quality at a glance

The following experimental techniques were used to determine the structure:

## *X-RAY DIFFRACTION*

The reported resolution of this entry is 2.10 Å.

Percentile scores (ranging between 0-100) for global validation metrics of the entry are shown in the following graphic. The table shows the number of entries on which the scores are based.



Metric	Whole archive (#Entries)	Similar resolution (#Entries, resolution range(Å))
$R_{free}$	91344	3939 (2.10-2.10)
Clashscore	102246	4460 (2.10-2.10)
Ramachandran outliers	100387	4413 (2.10-2.10)
Sidechain outliers	100360	4414 (2.10-2.10)
RSRZ outliers	91569	3948 (2.10-2.10)

The table below summarises the geometric issues observed across the polymeric chains and their fit to the electron density. The red, orange, yellow and green segments on the lower bar indicate the fraction of residues that contain outliers for  $\geq 3$ , 2, 1 and 0 types of geometric quality criteria. A grey segment represents the fraction of residues that are not modelled. The numeric value for each fraction is indicated below the corresponding segment, with a dot representing fractions  $\leq 5\%$ . The upper red bar (where present) indicates the fraction of residues that have poor fit to the electron density. The numeric value is given above the bar.

Mol	Chain	Length	Quality of chain
1	A	263	<div> <div>6%</div> <div> <div></div> <div>71%</div> <div>21%</div> <div>8%</div> </div> </div>
1	B	263	<div> <div>63%</div> <div>27%</div> <div>8%</div> </div>
1	C	263	<div> <div>69%</div> <div>22%</div> <div>8%</div> </div>
1	D	263	<div> <div>6%</div> <div> <div></div> <div>63%</div> <div>26%</div> <div>8%</div> </div> </div>

## 2 Entry composition [i](#)

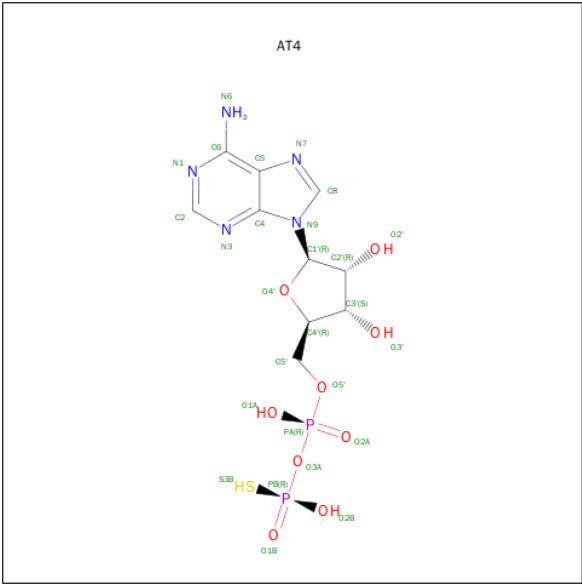
There are 3 unique types of molecules in this entry. The entry contains 8233 atoms, of which 0 are hydrogens and 0 are deuteriums.

In the tables below, the ZeroOcc column contains the number of atoms modelled with zero occupancy, the AltConf column contains the number of residues with at least one atom in alternate conformation and the Trace column contains the number of residues modelled with at most 2 atoms.

- Molecule 1 is a protein called Amino acid ABC transporter.

Mol	Chain	Residues	Atoms					ZeroOcc	AltConf	Trace
1	A	242	Total	C	N	O	S	0	0	0
			1896	1205	326	351	14			
1	B	242	Total	C	N	O	S	0	0	0
			1896	1205	326	351	14			
1	C	242	Total	C	N	O	S	0	0	0
			1896	1205	326	351	14			
1	D	242	Total	C	N	O	S	0	0	0
			1896	1205	326	351	14			

- Molecule 2 is 5'-O-[(R)-HYDROXY(THIOPHOSPHONOOXY)PHOSPHORYL]ADENOSINE (three-letter code: AT4) (formula: C<sub>10</sub>H<sub>15</sub>N<sub>5</sub>O<sub>9</sub>P<sub>2</sub>S).



Mol	Chain	Residues	Atoms						ZeroOcc	AltConf
2	A	1	Total	C	N	O	P	S	0	0
			27	10	5	9	2	1		
2	B	1	Total	C	N	O	P	S	0	0
			27	10	5	9	2	1		

Continued on next page...

*Continued from previous page...*

Mol	Chain	Residues	Atoms						ZeroOcc	AltConf
2	C	1	Total	C	N	O	P	S	0	0
			27	10	5	9	2	1		
2	D	1	Total	C	N	O	P	S	0	0
			27	10	5	9	2	1		

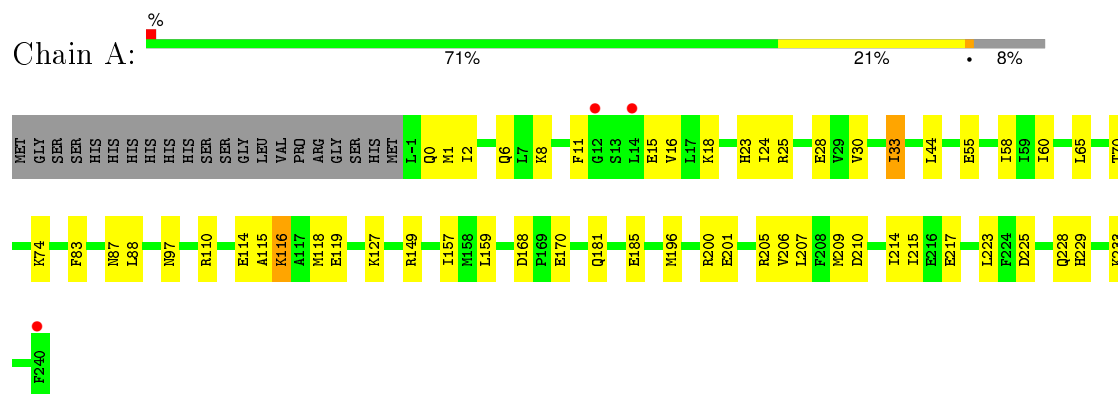
- Molecule 3 is water.

Mol	Chain	Residues	Atoms		ZeroOcc	AltConf
3	A	137	Total	O	0	0
			137	137		
3	B	145	Total	O	0	0
			145	145		
3	C	146	Total	O	0	0
			146	146		
3	D	113	Total	O	0	0
			113	113		

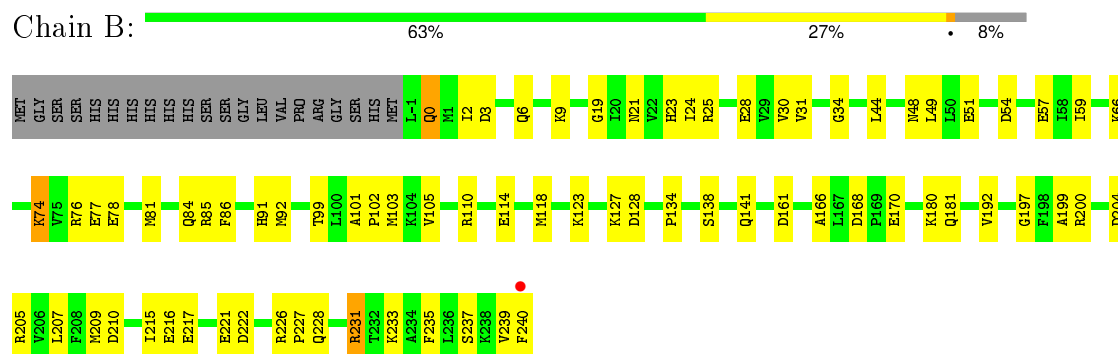
### 3 Residue-property plots [i](#)

These plots are drawn for all protein, RNA and DNA chains in the entry. The first graphic for a chain summarises the proportions of errors displayed in the second graphic. The second graphic shows the sequence view annotated by issues in geometry and electron density. Residues are color-coded according to the number of geometric quality criteria for which they contain at least one outlier: green = 0, yellow = 1, orange = 2 and red = 3 or more. A red dot above a residue indicates a poor fit to the electron density ( $RSRZ > 2$ ). Stretches of 2 or more consecutive residues without any outlier are shown as a green connector. Residues present in the sample, but not in the model, are shown in grey.

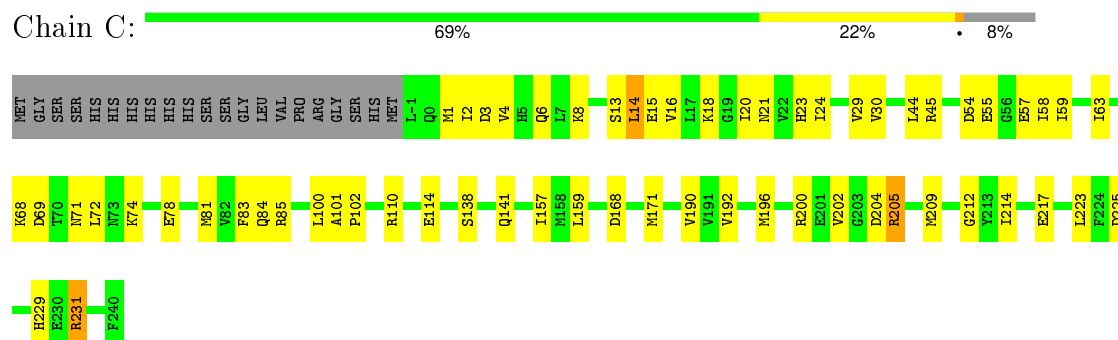
#### • Molecule 1: Amino acid ABC transporter



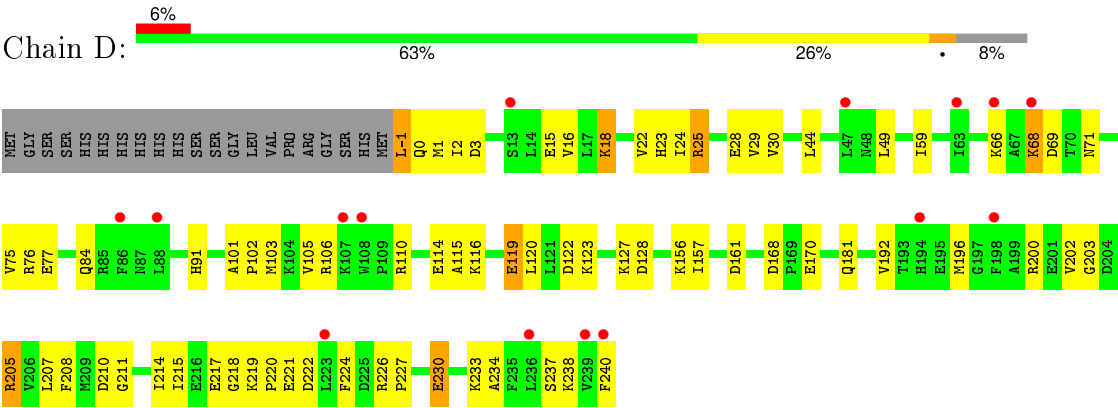
#### • Molecule 1: Amino acid ABC transporter



#### • Molecule 1: Amino acid ABC transporter



● Molecule 1: Amino acid ABC transporter



## 4 Data and refinement statistics

Property	Value	Source
Space group	P 1 21 1	Depositor
Cell constants a, b, c, $\alpha$ , $\beta$ , $\gamma$	87.29Å 54.12Å 106.01Å 90.00° 90.15° 90.00°	Depositor
Resolution (Å)	50.00 – 2.10 28.00 – 2.10	Depositor EDS
% Data completeness (in resolution range)	85.5 (50.00-2.10) 84.7 (28.00-2.10)	Depositor EDS
$R_{merge}$	0.10	Depositor
$R_{sym}$	(Not available)	Depositor
$\langle I/\sigma(I) \rangle$ <sup>1</sup>	2.08 (at 2.10Å)	Xtriage
Refinement program	CNS	Depositor
R, $R_{free}$	0.204 , 0.241 0.204 , 0.241	Depositor DCC
$R_{free}$ test set	2499 reflections (5.01%)	DCC
Wilson B-factor (Å <sup>2</sup> )	28.0	Xtriage
Anisotropy	0.545	Xtriage
Bulk solvent $k_{sol}$ (e/Å <sup>3</sup> ), $B_{sol}$ (Å <sup>2</sup> )	0.33 , 36.8	EDS
Estimated twinning fraction	0.399 for h,-k,-l	Xtriage
L-test for twinning <sup>2</sup>	$\langle  L  \rangle = 0.50$ , $\langle L^2 \rangle = 0.33$	Xtriage
Outliers	3 of 54235 reflections (0.006%)	Xtriage
$F_o, F_c$ correlation	0.95	EDS
Total number of atoms	8233	wwPDB-VP
Average B, all atoms (Å <sup>2</sup> )	37.0	wwPDB-VP

Xtriage's analysis on translational NCS is as follows: *The largest off-origin peak in the Patterson function is 7.19% of the height of the origin peak. No significant pseudotranslation is detected.*

<sup>1</sup>Intensities estimated from amplitudes.

<sup>2</sup>Theoretical values of  $\langle |L| \rangle$ ,  $\langle L^2 \rangle$  for acentric reflections are 0.5, 0.375 respectively for untwinned datasets, and 0.333, 0.2 for perfectly twinned datasets.

## 5 Model quality [i](#)

### 5.1 Standard geometry [i](#)

Bond lengths and bond angles in the following residue types are not validated in this section: AT4

The Z score for a bond length (or angle) is the number of standard deviations the observed value is removed from the expected value. A bond length (or angle) with  $|Z| > 5$  is considered an outlier worth inspection. RMSZ is the root-mean-square of all Z scores of the bond lengths (or angles).

Mol	Chain	Bond lengths		Bond angles	
		RMSZ	$\# Z  > 5$	RMSZ	$\# Z  > 5$
1	A	0.35	0/1927	0.62	0/2589
1	B	0.34	0/1927	0.63	0/2589
1	C	0.34	0/1927	0.65	0/2589
1	D	0.32	0/1927	0.61	0/2589
All	All	0.34	0/7708	0.63	0/10356

There are no bond length outliers.

There are no bond angle outliers.

There are no chirality outliers.

There are no planarity outliers.

### 5.2 Too-close contacts [i](#)

In the following table, the Non-H and H(model) columns list the number of non-hydrogen atoms and hydrogen atoms in the chain respectively. The H(added) column lists the number of hydrogen atoms added and optimized by MolProbity. The Clashes column lists the number of clashes within the asymmetric unit, whereas Symm-Clashes lists symmetry related clashes.

Mol	Chain	Non-H	H(model)	H(added)	Clashes	Symm-Clashes
1	A	1896	0	1941	50	0
1	B	1896	0	1941	77	0
1	C	1896	0	1941	63	0
1	D	1896	0	1941	71	0
2	A	27	0	13	0	0
2	B	27	0	13	0	0
2	C	27	0	13	1	0
2	D	27	0	13	1	0
3	A	137	0	0	3	0

*Continued on next page...*



*Continued from previous page...*

Mol	Chain	Non-H	H(model)	H(added)	Clashes	Symm-Clashes
3	B	145	0	0	14	0
3	C	146	0	0	6	0
3	D	113	0	0	7	0
All	All	8233	0	7816	240	0

The all-atom clashscore is defined as the number of clashes found per 1000 atoms (including hydrogen atoms). The all-atom clashscore for this structure is 15.

All (240) close contacts within the same asymmetric unit are listed below, sorted by their clash magnitude.

Atom-1	Atom-2	Interatomic distance (Å)	Clash overlap (Å)
1:C:24:ILE:HD12	1:C:30:VAL:HG21	1.42	1.02
1:C:205:ARG:HG3	1:C:205:ARG:HH11	1.28	0.98
1:A:83:PHE:H	1:A:87:ASN:HD21	1.06	0.92
1:B:200:ARG:HD2	1:C:13:SER:HB2	1.49	0.92
1:D:15:GLU:HG2	1:D:18:LYS:HD2	1.52	0.91
1:A:15:GLU:HG2	1:A:18:LYS:HD3	1.58	0.84
1:B:205:ARG:HG3	1:B:205:ARG:HH11	1.43	0.82
1:C:205:ARG:CG	1:C:205:ARG:HH11	1.93	0.80
1:B:49:LEU:HD12	1:B:76:ARG:HG3	1.63	0.80
1:C:204:ASP:O	1:C:205:ARG:HD2	1.83	0.79
1:B:204:ASP:O	1:B:205:ARG:HD2	1.85	0.77
1:B:197:GLY:HA3	1:C:14:LEU:HD12	1.67	0.77
1:B:231:ARG:HH21	1:B:235:PHE:HB2	1.51	0.76
1:D:181:GLN:HG3	3:D:636:HOH:O	1.86	0.75
1:D:116:LYS:HA	1:D:119:GLU:HG3	1.69	0.74
1:C:68:LYS:HE2	1:D:66:LYS:HG2	1.68	0.74
1:C:209:MET:HG2	1:C:214:ILE:HD13	1.69	0.74
1:D:115:ALA:O	1:D:119:GLU:HG2	1.89	0.73
1:B:222:ASP:HA	1:B:226:ARG:HH11	1.54	0.72
1:A:209:MET:HG2	1:A:214:ILE:HD13	1.72	0.71
1:D:156:LYS:HD2	3:D:631:HOH:O	1.90	0.71
1:D:-1:LEU:N	1:D:-1:LEU:HD13	2.06	0.71
1:B:84:GLN:HG2	1:B:161:ASP:O	1.91	0.70
1:B:6:GLN:NE2	1:B:21:ASN:HD21	1.90	0.69
1:D:196:MET:O	1:D:200:ARG:HG3	1.92	0.69
1:D:44:LEU:HD11	1:D:192:VAL:HG23	1.75	0.68
1:D:122:ASP:HB2	1:D:127:LYS:HE3	1.73	0.68
1:A:58:ILE:HG22	1:A:60:ILE:CD1	2.25	0.67
1:D:25:ARG:HG2	1:D:28:GLU:CD	2.16	0.66
1:B:84:GLN:HG3	3:B:640:HOH:O	1.96	0.65

*Continued on next page...*

*Continued from previous page...*

Atom-1	Atom-2	Interatomic distance (Å)	Clash overlap (Å)
1:D:49:LEU:HD22	1:D:76:ARG:HG3	1.77	0.64
1:D:227:PRO:HG2	1:D:233:LYS:HG2	1.80	0.64
1:D:221:GLU:HG2	1:D:222:ASP:H	1.62	0.64
1:A:60:ILE:HD13	1:A:65:LEU:HD21	1.80	0.63
1:D:168:ASP:HB3	1:D:170:GLU:OE2	1.98	0.63
1:B:181:GLN:HG3	3:B:669:HOH:O	1.98	0.63
1:A:110:ARG:O	1:A:114:GLU:HG3	1.98	0.63
1:B:110:ARG:O	1:B:114:GLU:HG3	1.98	0.63
1:B:222:ASP:HA	1:B:226:ARG:NH1	2.14	0.63
1:B:99:THR:O	1:B:103:MET:HB2	1.98	0.63
1:A:205:ARG:NH2	1:A:217:GLU:OE1	2.22	0.63
1:B:205:ARG:NH1	1:B:217:GLU:OE1	2.32	0.62
1:D:84:GLN:HG3	3:D:698:HOH:O	1.98	0.62
3:A:677:HOH:O	1:B:25:ARG:HD3	2.00	0.62
1:B:207:LEU:HD23	1:B:217:GLU:HG2	1.80	0.62
1:D:68:LYS:HD2	1:D:69:ASP:N	2.16	0.61
1:B:103:MET:HE1	3:B:728:HOH:O	2.00	0.61
1:C:231:ARG:NH2	3:C:652:HOH:O	2.32	0.61
1:C:200:ARG:HH22	1:C:225:ASP:CG	2.03	0.60
1:D:221:GLU:HG2	1:D:222:ASP:N	2.16	0.60
1:C:69:ASP:O	1:C:72:LEU:N	2.35	0.60
1:A:28:GLU:OE2	1:B:25:ARG:NH2	2.34	0.60
1:C:100:LEU:HD12	3:C:681:HOH:O	2.00	0.60
1:A:6:GLN:HG2	3:A:646:HOH:O	2.00	0.60
1:A:181:GLN:O	1:A:185:GLU:HG3	2.02	0.60
1:B:138:SER:OG	1:B:141:GLN:HG3	2.02	0.59
1:B:207:LEU:HD23	1:B:217:GLU:CG	2.32	0.59
1:A:149:ARG:HD3	3:A:635:HOH:O	2.01	0.59
1:D:0:GLN:HE22	1:D:23:HIS:HB3	1.68	0.58
1:A:8:LYS:HB2	1:A:55:GLU:HB2	1.83	0.58
1:B:200:ARG:CD	1:C:13:SER:HB2	2.29	0.58
1:A:0:GLN:HE22	1:B:23:HIS:CD2	2.21	0.58
1:C:68:LYS:O	1:C:71:ASN:HB3	2.04	0.58
1:A:25:ARG:CZ	1:B:205:ARG:NH1	2.67	0.57
1:C:8:LYS:HB2	1:C:55:GLU:HB2	1.86	0.57
1:B:231:ARG:HB2	3:B:717:HOH:O	2.05	0.56
1:B:205:ARG:CG	1:B:205:ARG:HH11	2.14	0.56
1:B:123:LYS:HE3	3:B:676:HOH:O	2.04	0.56
1:B:44:LEU:HD11	1:B:192:VAL:HG23	1.87	0.56
1:D:84:GLN:HG2	1:D:161:ASP:O	2.05	0.56
1:A:58:ILE:HG22	1:A:60:ILE:HD11	1.86	0.56

*Continued on next page...*

*Continued from previous page...*

Atom-1	Atom-2	Interatomic distance (Å)	Clash overlap (Å)
1:C:1:MET:HG3	1:C:157:ILE:HD11	1.88	0.56
1:C:4:VAL:HG13	1:C:58:ILE:CD1	2.36	0.56
1:A:196:MET:O	1:A:200:ARG:HG3	2.05	0.56
1:D:-1:LEU:H3	1:D:-1:LEU:HD13	1.71	0.55
1:C:205:ARG:CG	1:C:205:ARG:NH1	2.64	0.55
1:A:97:ASN:O	1:A:149:ARG:NH1	2.40	0.55
1:B:101:ALA:HB3	1:B:102:PRO:HD3	1.88	0.55
1:D:123:LYS:HD3	3:D:634:HOH:O	2.06	0.54
1:C:81:MET:HE3	1:C:159:LEU:CB	2.37	0.54
1:A:170:GLU:H	1:A:170:GLU:CD	2.11	0.54
1:B:227:PRO:HG2	1:B:233:LYS:HG2	1.90	0.54
1:D:-1:LEU:CD1	1:D:-1:LEU:N	2.71	0.54
1:C:205:ARG:HG3	1:C:205:ARG:NH1	2.08	0.54
1:B:48:ASN:CB	1:B:81:MET:HE1	2.38	0.53
1:B:85:ARG:HB2	1:B:85:ARG:HH11	1.73	0.53
1:A:25:ARG:NH2	1:B:28:GLU:OE2	2.39	0.53
1:B:24:ILE:HG12	1:B:30:VAL:HG21	1.91	0.53
1:A:201:GLU:HB2	1:D:91:HIS:O	2.08	0.53
1:C:74:LYS:O	1:C:78:GLU:HG3	2.09	0.53
1:C:81:MET:HE3	1:C:159:LEU:CD1	2.39	0.53
1:B:205:ARG:HG3	1:B:205:ARG:NH1	2.21	0.53
1:C:196:MET:O	1:C:200:ARG:HG3	2.09	0.53
1:C:15:GLU:HG2	1:C:18:LYS:HG2	1.91	0.53
1:D:215:ILE:N	1:D:215:ILE:HD12	2.24	0.53
1:B:85:ARG:HB2	1:B:85:ARG:NH1	2.25	0.52
1:C:63:ILE:CD1	1:D:68:LYS:HB2	2.39	0.52
1:C:63:ILE:HD13	1:D:68:LYS:HB2	1.91	0.52
1:D:234:ALA:O	1:D:238:LYS:HG3	2.09	0.52
1:D:200:ARG:HG2	1:D:224:PHE:CD2	2.45	0.52
1:C:69:ASP:C	1:C:71:ASN:N	2.61	0.51
1:C:6:GLN:NE2	1:C:21:ASN:HD21	2.09	0.51
1:A:44:LEU:HD22	1:A:159:LEU:HD22	1.92	0.51
1:A:24:ILE:HG12	1:A:30:VAL:HG21	1.92	0.51
1:C:57:GLU:HB2	3:C:610:HOH:O	2.11	0.51
1:D:208:PHE:CD2	1:D:215:ILE:HB	2.45	0.51
1:B:221:GLU:HG2	3:B:673:HOH:O	2.10	0.51
1:A:58:ILE:CG2	1:A:60:ILE:HD11	2.41	0.51
1:C:200:ARG:NH2	1:C:225:ASP:OD2	2.44	0.51
1:D:210:ASP:HB3	1:D:215:ILE:CD1	2.40	0.51
1:C:44:LEU:HD21	1:C:190:VAL:CG1	2.41	0.51
1:D:103:MET:HE3	3:D:688:HOH:O	2.10	0.51

*Continued on next page...*

*Continued from previous page...*

Atom-1	Atom-2	Interatomic distance (Å)	Clash overlap (Å)
1:C:200:ARG:HD2	3:C:667:HOH:O	2.10	0.51
1:A:33:ILE:H	1:A:33:ILE:HD13	1.76	0.50
1:D:1:MET:SD	1:D:157:ILE:HD11	2.51	0.50
1:A:0:GLN:HE22	1:B:23:HIS:HD2	1.60	0.50
1:A:33:ILE:HD12	1:A:206:VAL:CG1	2.42	0.50
1:D:110:ARG:O	1:D:114:GLU:HG3	2.12	0.49
1:B:168:ASP:HB3	1:B:170:GLU:OE2	2.12	0.49
1:A:60:ILE:HD12	1:A:60:ILE:N	2.26	0.49
1:A:23:HIS:ND1	1:B:0:GLN:NE2	2.61	0.49
1:B:0:GLN:HG2	3:B:639:HOH:O	2.11	0.49
1:A:25:ARG:NE	1:B:205:ARG:NH1	2.60	0.49
1:D:205:ARG:HH11	1:D:217:GLU:CD	2.16	0.49
1:A:215:ILE:HD12	1:A:215:ILE:N	2.28	0.49
1:A:115:ALA:O	1:A:119:GLU:HG3	2.13	0.49
1:B:200:ARG:HD2	1:C:13:SER:CB	2.34	0.49
1:B:0:GLN:NE2	1:B:23:HIS:CD2	2.80	0.49
1:B:31:VAL:HG21	1:B:199:ALA:HA	1.94	0.49
1:D:18:LYS:HE3	1:D:211:GLY:O	2.13	0.49
1:A:58:ILE:HG22	1:A:60:ILE:HD12	1.95	0.49
1:D:237:SER:O	1:D:240:PHE:HB2	2.14	0.48
1:B:205:ARG:CG	1:B:205:ARG:NH1	2.76	0.48
1:C:101:ALA:HB3	1:C:102:PRO:HD3	1.94	0.48
1:D:-1:LEU:H1	1:D:-1:LEU:HD13	1.78	0.48
1:A:200:ARG:NH2	1:A:225:ASP:OD2	2.46	0.48
1:A:223:LEU:O	1:A:223:LEU:HD23	2.14	0.48
1:C:229:HIS:HB3	1:C:231:ARG:CZ	2.44	0.48
1:C:44:LEU:HD21	1:C:190:VAL:HG12	1.96	0.47
1:B:226:ARG:N	1:B:227:PRO:CD	2.77	0.47
1:A:83:PHE:H	1:A:87:ASN:ND2	1.91	0.47
1:D:210:ASP:HB3	1:D:215:ILE:HD13	1.97	0.47
1:D:207:LEU:CD2	1:D:217:GLU:HG3	2.45	0.47
1:C:16:VAL:HG13	2:C:603:AT4:H5'1	1.96	0.47
1:D:116:LYS:HA	1:D:119:GLU:CG	2.41	0.47
1:B:118:MET:CE	1:B:127:LYS:HG2	2.45	0.47
1:D:29:VAL:HG11	1:D:202:VAL:HG12	1.97	0.47
1:C:71:ASN:HD21	1:D:68:LYS:HB3	1.80	0.47
1:B:170:GLU:HG3	3:C:729:HOH:O	2.15	0.47
1:B:216:GLU:CD	1:B:228:GLN:HG2	2.36	0.46
1:C:110:ARG:O	1:C:114:GLU:HG3	2.15	0.46
1:C:138:SER:OG	1:C:141:GLN:HG3	2.15	0.46
1:D:0:GLN:HB3	1:D:0:GLN:HE21	1.59	0.46

*Continued on next page...*

*Continued from previous page...*

Atom-1	Atom-2	Interatomic distance (Å)	Clash overlap (Å)
1:C:4:VAL:HG22	1:C:58:ILE:HD12	1.96	0.46
1:A:200:ARG:HH22	1:A:225:ASP:CG	2.19	0.46
1:C:44:LEU:HB3	1:C:81:MET:HE1	1.98	0.46
1:D:207:LEU:HD23	1:D:217:GLU:HG3	1.96	0.46
1:C:29:VAL:HG11	1:C:202:VAL:HG12	1.97	0.46
1:D:200:ARG:HG2	1:D:224:PHE:CE2	2.50	0.46
1:D:24:ILE:HG12	1:D:30:VAL:HG21	1.97	0.46
1:C:68:LYS:HE2	1:D:66:LYS:CG	2.41	0.46
1:B:207:LEU:CD2	1:B:217:GLU:HG3	2.45	0.46
1:B:74:LYS:HG2	3:B:705:HOH:O	2.15	0.46
1:C:44:LEU:HB3	1:C:81:MET:CE	2.46	0.46
1:C:23:HIS:O	1:C:24:ILE:HD13	2.16	0.46
1:B:231:ARG:NH2	1:B:235:PHE:HB2	2.27	0.46
1:C:44:LEU:HD22	1:C:159:LEU:HD22	1.98	0.46
1:B:6:GLN:HE21	1:B:21:ASN:HD21	1.64	0.45
1:B:227:PRO:CG	1:B:233:LYS:HG2	2.45	0.45
1:D:1:MET:O	1:D:2:ILE:HD13	2.17	0.45
1:D:77:GLU:HG2	1:D:105:VAL:HG11	1.97	0.45
1:A:118:MET:HB3	1:A:127:LYS:HE2	1.98	0.45
1:C:44:LEU:HD11	1:C:192:VAL:HG23	1.98	0.45
1:D:205:ARG:HD3	1:D:217:GLU:OE1	2.16	0.45
1:D:203:GLY:O	1:D:220:PRO:HG2	2.16	0.45
1:B:2:ILE:HB	1:B:24:ILE:HB	1.99	0.45
1:A:1:MET:HG3	1:A:157:ILE:HD11	1.99	0.45
1:A:0:GLN:NE2	1:B:23:HIS:HD2	2.15	0.44
1:B:3:ASP:HB3	1:B:59:ILE:HB	1.97	0.44
1:A:170:GLU:N	1:A:170:GLU:CD	2.71	0.44
1:D:230:GLU:OE2	1:D:233:LYS:HD2	2.18	0.44
1:B:85:ARG:HD3	1:B:86:PHE:CZ	2.52	0.44
1:C:223:LEU:HD23	1:C:223:LEU:C	2.37	0.44
1:C:229:HIS:HB3	1:C:231:ARG:NH2	2.32	0.44
1:C:69:ASP:O	1:C:71:ASN:N	2.51	0.44
1:D:71:ASN:O	1:D:75:VAL:HG23	2.17	0.44
1:C:45:ARG:HD3	3:C:746:HOH:O	2.17	0.44
1:D:3:ASP:HB3	1:D:59:ILE:HB	1.99	0.44
1:C:84:GLN:HG3	1:C:85:ARG:HG3	2.00	0.43
1:B:170:GLU:HG2	1:C:83:PHE:CD1	2.53	0.43
1:C:20:ILE:HD11	1:C:212:GLY:O	2.19	0.43
1:B:78:GLU:HG3	3:B:732:HOH:O	2.18	0.43
1:D:205:ARG:NH1	1:D:218:GLY:HA2	2.33	0.43
1:A:210:ASP:HB3	1:A:215:ILE:HD13	2.00	0.43

*Continued on next page...*

*Continued from previous page...*

Atom-1	Atom-2	Interatomic distance (Å)	Clash overlap (Å)
1:B:166:ALA:HB3	3:B:698:HOH:O	2.18	0.43
1:B:180:LYS:HE3	3:B:740:HOH:O	2.17	0.43
1:B:118:MET:HE1	1:B:127:LYS:HG2	1.99	0.43
1:B:128:ASP:HA	3:B:681:HOH:O	2.18	0.43
1:C:138:SER:HB2	1:C:171:MET:CE	2.49	0.43
1:B:91:HIS:CD2	1:B:91:HIS:H	2.37	0.43
1:B:237:SER:HB3	3:B:675:HOH:O	2.18	0.43
1:C:68:LYS:CE	1:D:66:LYS:HG2	2.45	0.43
1:D:49:LEU:N	1:D:49:LEU:HD12	2.33	0.43
1:A:223:LEU:C	1:A:223:LEU:HD23	2.40	0.42
1:A:116:LYS:HD3	1:A:116:LYS:HA	1.95	0.42
1:C:3:ASP:HB3	1:C:59:ILE:HB	2.01	0.42
1:B:226:ARG:HD2	3:B:704:HOH:O	2.17	0.42
1:C:63:ILE:HG23	1:C:71:ASN:OD1	2.19	0.42
1:D:16:VAL:CG1	2:D:604:AT4:H5'1	2.49	0.42
1:D:230:GLU:HG3	3:D:683:HOH:O	2.19	0.42
1:B:210:ASP:HB3	1:B:215:ILE:CD1	2.50	0.42
1:B:235:PHE:O	1:B:239:VAL:HG13	2.20	0.42
1:A:114:GLU:O	1:A:118:MET:HG2	2.19	0.42
1:D:22:VAL:HG22	1:D:214:ILE:CD1	2.50	0.42
1:D:22:VAL:CG2	1:D:214:ILE:HD11	2.50	0.42
1:A:74:LYS:HD2	1:A:74:LYS:HA	1.68	0.42
1:C:209:MET:CG	1:C:214:ILE:HD13	2.45	0.41
1:D:205:ARG:HG2	1:D:217:GLU:OE1	2.19	0.41
1:D:101:ALA:HB3	1:D:102:PRO:HD3	2.01	0.41
1:A:229:HIS:O	1:A:233:LYS:HG3	2.20	0.41
1:B:48:ASN:HB3	1:B:81:MET:HE1	2.02	0.41
1:D:106:ARG:HG2	1:D:106:ARG:HH11	1.84	0.41
1:C:69:ASP:C	1:C:71:ASN:H	2.23	0.41
1:B:221:GLU:C	1:B:226:ARG:HH12	2.24	0.41
1:D:84:GLN:NE2	3:D:639:HOH:O	2.54	0.41
1:B:207:LEU:HD23	1:B:217:GLU:HG3	2.03	0.40
1:D:0:GLN:HE22	1:D:23:HIS:CB	2.33	0.40
1:C:81:MET:HE3	1:C:159:LEU:HD13	2.03	0.40
1:A:170:GLU:HG3	1:D:128:ASP:OD2	2.21	0.40
1:B:9:LYS:HE2	1:B:51:GLU:CG	2.51	0.40
1:A:11:PHE:CE2	1:A:16:VAL:HG21	2.56	0.40
1:B:77:GLU:HG2	1:B:105:VAL:HG11	2.04	0.40
1:D:120:LEU:HD23	1:D:123:LYS:HE2	2.04	0.40
1:A:2:ILE:HB	1:A:24:ILE:HB	2.03	0.40
1:B:92:MET:O	1:B:134:PRO:HD3	2.22	0.40

*Continued on next page...*

*Continued from previous page...*

Atom-1	Atom-2	Interatomic distance (Å)	Clash overlap (Å)
1:C:2:ILE:HB	1:C:24:ILE:HB	2.02	0.40
1:D:219:LYS:HB3	1:D:221:GLU:OE2	2.22	0.40
1:A:33:ILE:HD13	1:A:207:LEU:O	2.22	0.40
1:B:34:GLY:HA3	1:B:209:MET:O	2.22	0.40
1:D:-1:LEU:HB2	1:D:0:GLN:H	1.36	0.40

There are no symmetry-related clashes.

## 5.3 Torsion angles [i](#)

### 5.3.1 Protein backbone [i](#)

In the following table, the Percentiles column shows the percent Ramachandran outliers of the chain as a percentile score with respect to all X-ray entries followed by that with respect to entries of similar resolution.

The Analysed column shows the number of residues for which the backbone conformation was analysed, and the total number of residues.

Mol	Chain	Analysed	Favoured	Allowed	Outliers	Percentiles	
1	A	240/263 (91%)	236 (98%)	4 (2%)	0	100	100
1	B	240/263 (91%)	234 (98%)	4 (2%)	2 (1%)	24	17
1	C	240/263 (91%)	234 (98%)	6 (2%)	0	100	100
1	D	240/263 (91%)	234 (98%)	6 (2%)	0	100	100
All	All	960/1052 (91%)	938 (98%)	20 (2%)	2 (0%)	52	53

All (2) Ramachandran outliers are listed below:

Mol	Chain	Res	Type
1	B	54	ASP
1	B	19	GLY

### 5.3.2 Protein sidechains [i](#)

In the following table, the Percentiles column shows the percent sidechain outliers of the chain as a percentile score with respect to all X-ray entries followed by that with respect to entries of similar resolution.

The Analysed column shows the number of residues for which the sidechain conformation was

analysed, and the total number of residues.

Mol	Chain	Analysed	Rotameric	Outliers	Percentiles	
1	A	207/225 (92%)	201 (97%)	6 (3%)	50	53
1	B	207/225 (92%)	201 (97%)	6 (3%)	50	53
1	C	207/225 (92%)	201 (97%)	6 (3%)	50	53
1	D	207/225 (92%)	199 (96%)	8 (4%)	39	39
All	All	828/900 (92%)	802 (97%)	26 (3%)	47	50

All (26) residues with a non-rotameric sidechain are listed below:

Mol	Chain	Res	Type
1	A	33	ILE
1	A	70	THR
1	A	88	LEU
1	A	116	LYS
1	A	168	ASP
1	A	228	GLN
1	B	0	GLN
1	B	57	GLU
1	B	66	LYS
1	B	74	LYS
1	B	231	ARG
1	B	240	PHE
1	C	14	LEU
1	C	54	ASP
1	C	168	ASP
1	C	205	ARG
1	C	217	GLU
1	C	231	ARG
1	D	-1	LEU
1	D	18	LYS
1	D	25	ARG
1	D	68	LYS
1	D	119	GLU
1	D	205	ARG
1	D	226	ARG
1	D	230	GLU

Some sidechains can be flipped to improve hydrogen bonding and reduce clashes. All (25) such sidechains are listed below:



Mol	Chain	Res	Type
1	A	0	GLN
1	A	6	GLN
1	A	48	ASN
1	A	84	GLN
1	A	87	ASN
1	A	96	ASN
1	A	194	HIS
1	A	229	HIS
1	B	0	GLN
1	B	6	GLN
1	B	23	HIS
1	B	84	GLN
1	B	91	HIS
1	B	96	ASN
1	B	181	GLN
1	C	0	GLN
1	C	6	GLN
1	C	48	ASN
1	C	73	ASN
1	C	96	ASN
1	C	194	HIS
1	D	0	GLN
1	D	84	GLN
1	D	96	ASN
1	D	228	GLN

### 5.3.3 RNA [i](#)

There are no RNA molecules in this entry.

### 5.4 Non-standard residues in protein, DNA, RNA chains [i](#)

There are no non-standard protein/DNA/RNA residues in this entry.

### 5.5 Carbohydrates [i](#)

There are no carbohydrates in this entry.

### 5.6 Ligand geometry [i](#)

4 ligands are modelled in this entry.

In the following table, the Counts columns list the number of bonds (or angles) for which Mogul statistics could be retrieved, the number of bonds (or angles) that are observed in the model and the number of bonds (or angles) that are defined in the chemical component dictionary. The Link column lists molecule types, if any, to which the group is linked. The Z score for a bond length (or angle) is the number of standard deviations the observed value is removed from the expected value. A bond length (or angle) with  $|Z| > 2$  is considered an outlier worth inspection. RMSZ is the root-mean-square of all Z scores of the bond lengths (or angles).

Mol	Type	Chain	Res	Link	Bond lengths			Bond angles		
					Counts	RMSZ	# $ Z  > 2$	Counts	RMSZ	# $ Z  > 2$
2	AT4	A	601	-	20,29,29	1.27	3 (15%)	24,45,45	2.33	4 (16%)
2	AT4	B	602	-	20,29,29	1.27	3 (15%)	24,45,45	2.34	4 (16%)
2	AT4	C	603	-	20,29,29	1.27	3 (15%)	24,45,45	2.37	5 (20%)
2	AT4	D	604	-	20,29,29	1.27	3 (15%)	24,45,45	2.37	5 (20%)

In the following table, the Chirals column lists the number of chiral outliers, the number of chiral centers analysed, the number of these observed in the model and the number defined in the chemical component dictionary. Similar counts are reported in the Torsion and Rings columns. '-' means no outliers of that kind were identified.

Mol	Type	Chain	Res	Link	Chirals	Torsions	Rings
2	AT4	A	601	-	-	0/9/32/32	0/3/3/3
2	AT4	B	602	-	-	0/9/32/32	0/3/3/3
2	AT4	C	603	-	-	0/9/32/32	0/3/3/3
2	AT4	D	604	-	-	0/9/32/32	0/3/3/3

All (12) bond length outliers are listed below:

Mol	Chain	Res	Type	Atoms	Z	Observed(Å)	Ideal(Å)
2	C	603	AT4	PB-O2B	-3.15	1.48	1.56
2	A	601	AT4	PB-O2B	-3.12	1.48	1.56
2	B	602	AT4	PB-O2B	-3.11	1.48	1.56
2	D	604	AT4	PB-O2B	-3.09	1.48	1.56
2	C	603	AT4	O4'-C1'	2.38	1.44	1.41
2	B	602	AT4	O4'-C1'	2.43	1.44	1.41
2	A	601	AT4	O4'-C1'	2.44	1.44	1.41
2	D	604	AT4	O4'-C1'	2.47	1.44	1.41
2	A	601	AT4	PA-O2A	2.79	1.61	1.51
2	C	603	AT4	PA-O2A	2.80	1.61	1.51
2	B	602	AT4	PA-O2A	2.81	1.61	1.51
2	D	604	AT4	PA-O2A	2.83	1.61	1.51

All (18) bond angle outliers are listed below:

Mol	Chain	Res	Type	Atoms	Z	Observed(°)	Ideal(°)
2	C	603	AT4	N3-C2-N1	-9.37	121.72	128.89
2	B	602	AT4	N3-C2-N1	-9.27	121.79	128.89
2	A	601	AT4	N3-C2-N1	-9.25	121.81	128.89
2	D	604	AT4	N3-C2-N1	-9.19	121.86	128.89
2	D	604	AT4	PA-O3A-PB	-3.26	121.73	132.67
2	B	602	AT4	PA-O3A-PB	-2.96	122.74	132.67
2	A	601	AT4	PA-O3A-PB	-2.90	122.94	132.67
2	C	603	AT4	PA-O3A-PB	-2.73	123.52	132.67
2	D	604	AT4	C4-C5-N7	-2.29	107.37	109.48
2	C	603	AT4	C4-C5-N7	-2.12	107.53	109.48
2	A	601	AT4	C4-C5-N7	-2.09	107.55	109.48
2	C	603	AT4	C4'-O4'-C1'	-2.07	107.45	109.72
2	B	602	AT4	C4-C5-N7	-2.07	107.58	109.48
2	D	604	AT4	O4'-C1'-N9	2.00	112.29	108.10
2	A	601	AT4	O2B-PB-O1B	3.77	118.05	109.99
2	C	603	AT4	O2B-PB-O1B	3.79	118.09	109.99
2	D	604	AT4	O2B-PB-O1B	3.87	118.26	109.99
2	B	602	AT4	O2B-PB-O1B	3.89	118.31	109.99

There are no chirality outliers.

There are no torsion outliers.

There are no ring outliers.

2 monomers are involved in 2 short contacts:

Mol	Chain	Res	Type	Clashes	Symm-Clashes
2	C	603	AT4	1	0
2	D	604	AT4	1	0

## 5.7 Other polymers [i](#)

There are no such residues in this entry.

## 5.8 Polymer linkage issues [i](#)

There are no chain breaks in this entry.

## 6 Fit of model and data ⓘ

### 6.1 Protein, DNA and RNA chains ⓘ

In the following table, the column labelled ‘#RSRZ> 2’ contains the number (and percentage) of RSRZ outliers, followed by percent RSRZ outliers for the chain as percentile scores relative to all X-ray entries and entries of similar resolution. The OWAB column contains the minimum, median, 95<sup>th</sup> percentile and maximum values of the occupancy-weighted average B-factor per residue. The column labelled ‘Q< 0.9’ lists the number of (and percentage) of residues with an average occupancy less than 0.9.

Mol	Chain	Analysed	<RSRZ>	#RSRZ>2	OWAB(Å <sup>2</sup> )	Q<0.9
1	A	242/263 (92%)	-0.01	3 (1%) 81 85	18, 30, 47, 70	1 (0%)
1	B	242/263 (92%)	0.12	1 (0%) 93 94	23, 33, 54, 89	0
1	C	242/263 (92%)	-0.09	0 100 100	20, 31, 49, 64	0
1	D	242/263 (92%)	0.48	15 (6%) 24 32	29, 42, 64, 90	0
All	All	968/1052 (92%)	0.12	19 (1%) 68 73	18, 34, 56, 90	1 (0%)

All (19) RSRZ outliers are listed below:

Mol	Chain	Res	Type	RSRZ
1	B	240	PHE	6.1
1	D	240	PHE	4.9
1	D	239	VAL	3.9
1	D	86	PHE	3.7
1	D	236	LEU	3.7
1	D	198	PHE	3.2
1	D	63	ILE	3.0
1	A	240	PHE	2.7
1	D	13	SER	2.7
1	D	88	LEU	2.5
1	D	223	LEU	2.4
1	D	66	LYS	2.4
1	A	14	LEU	2.4
1	D	107	LYS	2.3
1	D	68	LYS	2.2
1	D	194	HIS	2.1
1	D	108	TRP	2.1
1	D	47	LEU	2.1
1	A	12	GLY	2.1

## 6.2 Non-standard residues in protein, DNA, RNA chains [i](#)

There are no non-standard protein/DNA/RNA residues in this entry.

## 6.3 Carbohydrates [i](#)

There are no carbohydrates in this entry.

## 6.4 Ligands [i](#)

In the following table, the Atoms column lists the number of modelled atoms in the group and the number defined in the chemical component dictionary. LLDF column lists the quality of electron density of the group with respect to its neighbouring residues in protein, DNA or RNA chains. The B-factors column lists the minimum, median, 95<sup>th</sup> percentile and maximum values of B factors of atoms in the group. The column labelled 'Q< 0.9' lists the number of atoms with occupancy less than 0.9.

Mol	Type	Chain	Res	Atoms	RSCC	RSR	LLDF	B-factors( $\text{\AA}^2$ )	Q<0.9
2	AT4	A	601	27/27	0.96	0.14	0.30	31,61,66,66	0
2	AT4	C	603	27/27	0.97	0.12	0.08	31,55,58,59	0
2	AT4	B	602	27/27	0.98	0.12	0.06	29,42,46,47	0
2	AT4	D	604	27/27	0.96	0.12	-0.28	36,49,54,55	0

## 6.5 Other polymers [i](#)

There are no such residues in this entry.