



# Full wwPDB X-ray Structure Validation Report ⓘ

Feb 1, 2016 – 07:24 PM GMT

PDB ID : 4ORK  
Title : Crystal Structure of the Phosphotransferase Domain of the Bifunctional Aminoglycoside Resistance Enzyme AAC(6')-Ie-APH(2'')-Ia  
Authors : Smith, C.A.; Toth, M.; Bhattacharya, M.; Frase, H.; Vakulenko, S.B.  
Deposited on : 2014-02-11  
Resolution : 2.30 Å(reported)

This is a Full wwPDB X-ray Structure Validation Report for a publicly released PDB entry.  
We welcome your comments at [validation@mail.wwpdb.org](mailto:validation@mail.wwpdb.org)  
A user guide is available at  
<http://wwpdb.org/validation/2016/XrayValidationReportHelp>  
with specific help available everywhere you see the ⓘ symbol.

---

The following versions of software and data (see [references ⓘ](#)) were used in the production of this report:

MolProbity : 4.02b-467  
Mogul : 1.7 (RC4), CSD as536be (2015)  
Xtriage (Phenix) : 1.9-1692  
EDS : rb-20026688  
Percentile statistics : 20151230.v01 (using entries in the PDB archive December 30th 2015)  
Refmac : 5.8.0135  
CCP4 : 6.5.0  
Ideal geometry (proteins) : Engh & Huber (2001)  
Ideal geometry (DNA, RNA) : Parkinson et al. (1996)  
Validation Pipeline (wwPDB-VP) : trunk26865

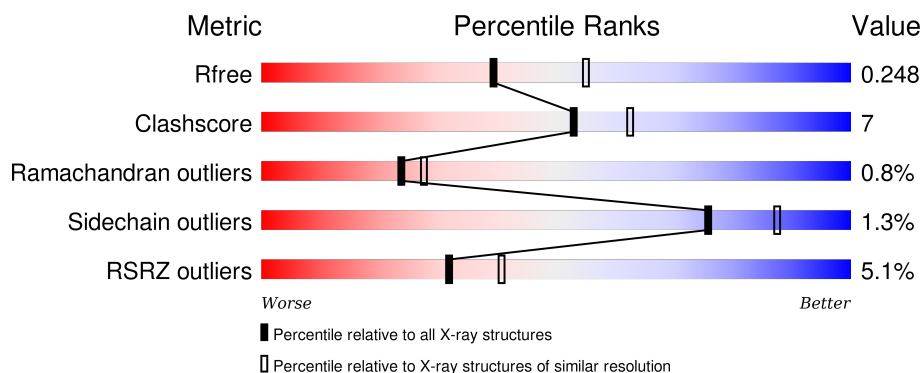
# 1 Overall quality at a glance

The following experimental techniques were used to determine the structure:

## *X-RAY DIFFRACTION*

The reported resolution of this entry is 2.30 Å.

Percentile scores (ranging between 0-100) for global validation metrics of the entry are shown in the following graphic. The table shows the number of entries on which the scores are based.



Metric	Whole archive (#Entries)	Similar resolution (#Entries, resolution range(Å))
$R_{free}$	91344	3852 (2.30-2.30)
Clashscore	102246	4452 (2.30-2.30)
Ramachandran outliers	100387	4410 (2.30-2.30)
Sidechain outliers	100360	4409 (2.30-2.30)
RSRZ outliers	91569	3857 (2.30-2.30)

The table below summarises the geometric issues observed across the polymeric chains and their fit to the electron density. The red, orange, yellow and green segments on the lower bar indicate the fraction of residues that contain outliers for  $\geq 3$ , 2, 1 and 0 types of geometric quality criteria. A grey segment represents the fraction of residues that are not modelled. The numeric value for each fraction is indicated below the corresponding segment, with a dot representing fractions  $\leq 5\%$ . The upper red bar (where present) indicates the fraction of residues that have poor fit to the electron density. The numeric value is given above the bar.

Mol	Chain	Length	Quality of chain
1	A	305	<div> <div>6%</div> <div> <div></div> <div>85%</div> <div>12%</div> <div>..</div> </div> </div>
1	B	305	<div> <div>2%</div> <div> <div></div> <div>84%</div> <div>12%</div> <div>..</div> </div> </div>
1	C	305	<div> <div>%</div> <div> <div></div> <div>88%</div> <div>8%</div> <div>.</div> </div> </div>
1	D	305	<div> <div>10%</div> <div> <div></div> <div>72%</div> <div>21%</div> <div>...</div> </div> </div>

## 2 Entry composition [i](#)

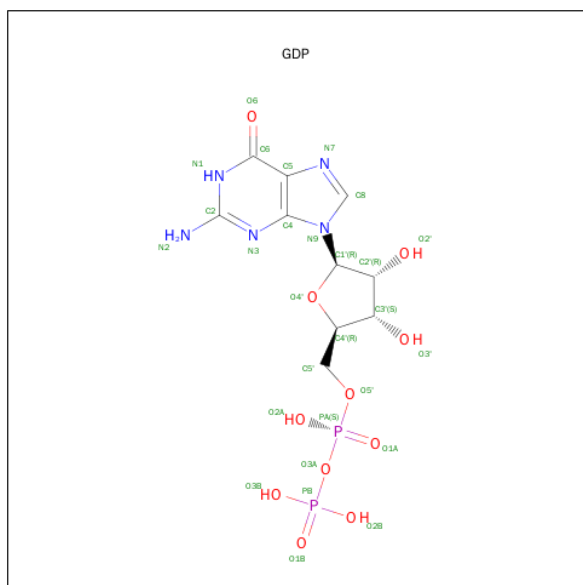
There are 4 unique types of molecules in this entry. The entry contains 10106 atoms, of which 0 are hydrogens and 0 are deuteriums.

In the tables below, the ZeroOcc column contains the number of atoms modelled with zero occupancy, the AltConf column contains the number of residues with at least one atom in alternate conformation and the Trace column contains the number of residues modelled with at most 2 atoms.

- Molecule 1 is a protein called Bifunctional AAC/APH.

Mol	Chain	Residues	Atoms					ZeroOcc	AltConf	Trace
1	A	299	Total	C	N	O	S	0	3	0
			2482	1583	388	500	11			
1	B	296	Total	C	N	O	S	0	0	0
			2441	1556	379	496	10			
1	C	293	Total	C	N	O	S	0	1	0
			2419	1546	375	488	10			
1	D	295	Total	C	N	O	S	0	0	0
			2433	1555	378	490	10			

- Molecule 2 is GUANOSINE-5'-DIPHOSPHATE (three-letter code: GDP) (formula:  $C_{10}H_{15}N_5O_{11}P_2$ ).



Mol	Chain	Residues	Atoms					ZeroOcc	AltConf
2	A	1	Total	C	N	O	P	0	0
			28	10	5	11	2		
2	B	1	Total	C	N	O	P	0	0
			28	10	5	11	2		

*Continued on next page...*

*Continued from previous page...*

Mol	Chain	Residues	Atoms					ZeroOcc	AltConf
2	C	1	Total	C	N	O	P	0	0
			28	10	5	11	2		
2	D	1	Total	C	N	O	P	0	0
			28	10	5	11	2		

- Molecule 3 is MAGNESIUM ION (three-letter code: MG) (formula: Mg).

Mol	Chain	Residues	Atoms		ZeroOcc	AltConf
3	B	2	Total	Mg	0	0
			2	2		
3	A	2	Total	Mg	0	0
			2	2		
3	D	2	Total	Mg	0	0
			2	2		
3	C	2	Total	Mg	0	0
			2	2		

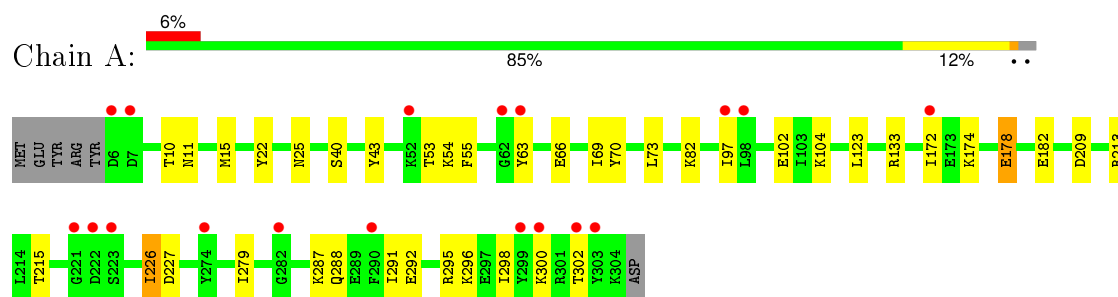
- Molecule 4 is water.

Mol	Chain	Residues	Atoms		ZeroOcc	AltConf
4	A	53	Total	O	0	2
			55	55		
4	B	56	Total	O	0	0
			56	56		
4	C	56	Total	O	0	2
			58	58		
4	D	42	Total	O	0	0
			42	42		

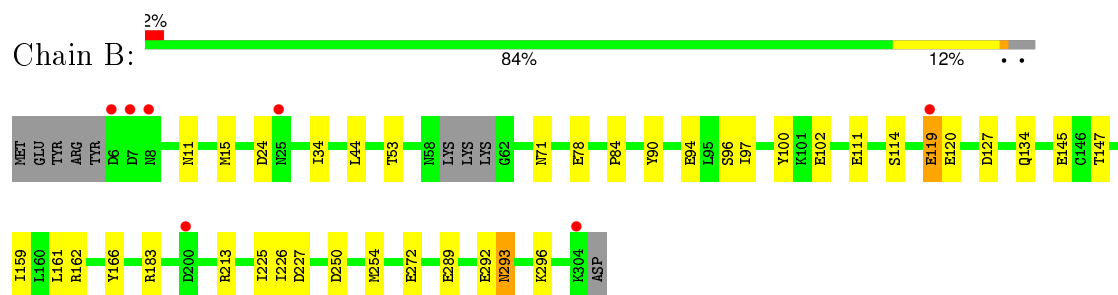
### 3 Residue-property plots [i](#)

These plots are drawn for all protein, RNA and DNA chains in the entry. The first graphic for a chain summarises the proportions of errors displayed in the second graphic. The second graphic shows the sequence view annotated by issues in geometry and electron density. Residues are color-coded according to the number of geometric quality criteria for which they contain at least one outlier: green = 0, yellow = 1, orange = 2 and red = 3 or more. A red dot above a residue indicates a poor fit to the electron density ( $RSRZ > 2$ ). Stretches of 2 or more consecutive residues without any outlier are shown as a green connector. Residues present in the sample, but not in the model, are shown in grey.

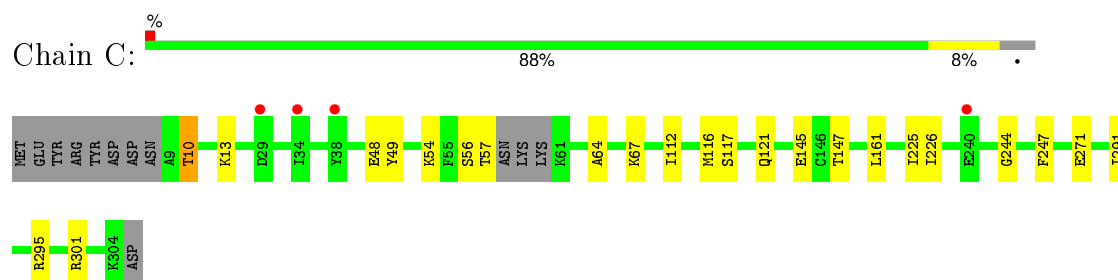
#### • Molecule 1: Bifunctional AAC/APH



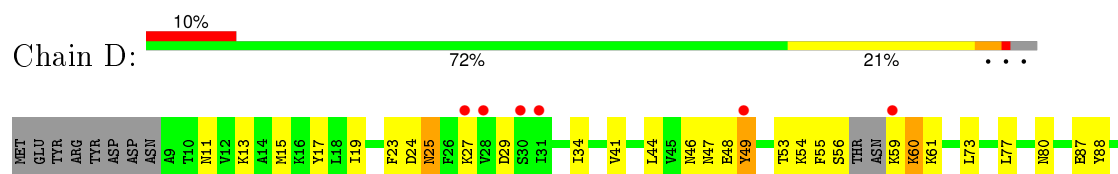
#### • Molecule 1: Bifunctional AAC/APH

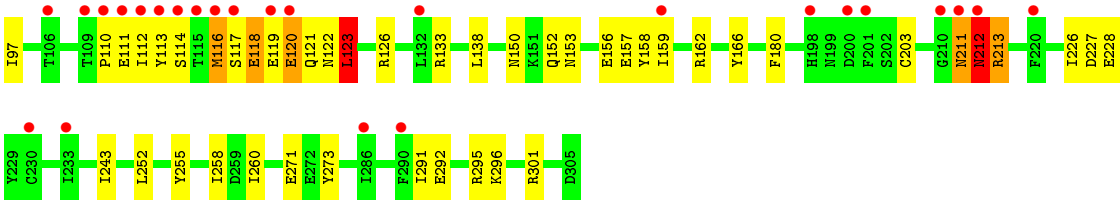


#### • Molecule 1: Bifunctional AAC/APH



#### • Molecule 1: Bifunctional AAC/APH





## 4 Data and refinement statistics

Property	Value	Source
Space group	P 1 21 1	Depositor
Cell constants a, b, c, $\alpha$ , $\beta$ , $\gamma$	90.69 Å 95.70 Å 91.15 Å 90.00° 104.88° 90.00°	Depositor
Resolution (Å)	36.20 – 2.30 36.22 – 2.24	Depositor EDS
% Data completeness (in resolution range)	93.3 (36.20-2.30) 92.0 (36.22-2.24)	Depositor EDS
$R_{merge}$	0.04	Depositor
$R_{sym}$	(Not available)	Depositor
$\langle I/\sigma(I) \rangle$ <sup>1</sup>	1.21 (at 2.24 Å)	Xtriage
Refinement program	PHENIX (phenix.refine: 1.8.4_1496)	Depositor
R, $R_{free}$	0.185 , 0.245 0.196 , 0.248	Depositor DCC
$R_{free}$ test set	3121 reflections (5.25%)	DCC
Wilson B-factor (Å <sup>2</sup> )	54.0	Xtriage
Anisotropy	0.126	Xtriage
Bulk solvent $k_{sol}$ (e/Å <sup>3</sup> ), $B_{sol}$ (Å <sup>2</sup> )	0.35 , 63.3	EDS
Estimated twinning fraction	0.023 for l,-k,h	Xtriage
L-test for twinning <sup>2</sup>	$\langle  L  \rangle = 0.48$ , $\langle L^2 \rangle = 0.31$	Xtriage
Outliers	1 of 66616 reflections (0.002%)	Xtriage
$F_o, F_c$ correlation	0.96	EDS
Total number of atoms	10106	wwPDB-VP
Average B, all atoms (Å <sup>2</sup> )	69.0	wwPDB-VP

Xtriage's analysis on translational NCS is as follows: *The largest off-origin peak in the Patterson function is 4.34% of the height of the origin peak. No significant pseudotranslation is detected.*

<sup>1</sup>Intensities estimated from amplitudes.

<sup>2</sup>Theoretical values of  $\langle |L| \rangle$ ,  $\langle L^2 \rangle$  for acentric reflections are 0.5, 0.375 respectively for untwinned datasets, and 0.333, 0.2 for perfectly twinned datasets.

## 5 Model quality

### 5.1 Standard geometry

Bond lengths and bond angles in the following residue types are not validated in this section: GDP, MG

The Z score for a bond length (or angle) is the number of standard deviations the observed value is removed from the expected value. A bond length (or angle) with  $|Z| > 5$  is considered an outlier worth inspection. RMSZ is the root-mean-square of all Z scores of the bond lengths (or angles).

Mol	Chain	Bond lengths		Bond angles	
		RMSZ	$\# Z  > 5$	RMSZ	$\# Z  > 5$
1	A	0.43	0/2535	0.57	0/3417
1	B	0.44	0/2484	0.57	0/3350
1	C	0.47	0/2465	0.57	0/3324
1	D	0.45	0/2476	0.67	3/3336 (0.1%)
All	All	0.45	0/9960	0.60	3/13427 (0.0%)

Chiral center outliers are detected by calculating the chiral volume of a chiral center and verifying if the center is modelled as a planar moiety or with the opposite hand. A planarity outlier is detected by checking planarity of atoms in a peptide group, atoms in a mainchain group or atoms of a sidechain that are expected to be planar.

Mol	Chain	#Chirality outliers	#Planarity outliers
1	D	0	2

There are no bond length outliers.

All (3) bond angle outliers are listed below:

Mol	Chain	Res	Type	Atoms	Z	Observed( $^{\circ}$ )	Ideal( $^{\circ}$ )
1	D	116	MET	CA-CB-CG	8.93	128.49	113.30
1	D	123	LEU	CB-CG-CD1	-8.42	96.69	111.00
1	D	123	LEU	CA-CB-CG	5.93	128.93	115.30

There are no chirality outliers.

All (2) planarity outliers are listed below:

Mol	Chain	Res	Type	Group
1	D	120	GLU	Peptide
1	D	211	ASN	Peptide



## 5.2 Too-close contacts ⓘ

In the following table, the Non-H and H(model) columns list the number of non-hydrogen atoms and hydrogen atoms in the chain respectively. The H(added) column lists the number of hydrogen atoms added and optimized by MolProbity. The Clashes column lists the number of clashes within the asymmetric unit, whereas Symm-Clashes lists symmetry related clashes.

Mol	Chain	Non-H	H(model)	H(added)	Clashes	Symm-Clashes
1	A	2482	0	2405	29	0
1	B	2441	0	2348	23	1
1	C	2419	0	2336	12	0
1	D	2433	0	2353	72	1
2	A	28	0	12	0	0
2	B	28	0	12	0	0
2	C	28	0	12	0	0
2	D	28	0	12	0	0
3	A	2	0	0	0	0
3	B	2	0	0	0	0
3	C	2	0	0	0	0
3	D	2	0	0	0	0
4	A	55	0	0	2	0
4	B	56	0	0	1	0
4	C	58	0	0	0	0
4	D	42	0	0	2	0
All	All	10106	0	9490	128	1

The all-atom clashscore is defined as the number of clashes found per 1000 atoms (including hydrogen atoms). The all-atom clashscore for this structure is 7.

All (128) close contacts within the same asymmetric unit are listed below, sorted by their clash magnitude.

Atom-1	Atom-2	Interatomic distance (Å)	Clash overlap (Å)
1:D:120:GLU:HG2	1:D:121:GLN:N	1.89	0.87
1:D:116:MET:HB2	1:D:120:GLU:OE1	1.81	0.79
1:D:120:GLU:CG	1:D:121:GLN:HG3	2.13	0.77
1:D:120:GLU:CD	1:D:121:GLN:HG3	2.05	0.77
1:D:123:LEU:HD11	1:D:213:ARG:HD3	1.67	0.77
1:D:212:ASN:N	1:D:212:ASN:HD22	1.83	0.76
1:B:102:GLU:OE2	4:B:649:HOH:O	2.03	0.75
1:D:117:SER:O	1:D:120:GLU:N	2.17	0.74
1:D:156:GLU:HA	1:D:159:ILE:HD12	1.71	0.73
1:D:48:GLU:O	1:D:49:TYR:HD1	1.76	0.69
1:C:271:GLU:O	1:C:301:ARG:NH2	2.28	0.67

*Continued on next page...*

*Continued from previous page...*

Atom-1	Atom-2	Interatomic distance (Å)	Clash overlap (Å)
1:D:117:SER:O	1:D:119:GLU:N	2.27	0.67
1:B:292:GLU:HG2	1:B:296:LYS:HE3	1.78	0.65
1:D:212:ASN:HD22	1:D:212:ASN:H	1.43	0.65
1:D:123:LEU:HD11	1:D:213:ARG:CD	2.27	0.65
1:A:15:MET:HG3	1:A:43:TYR:CE1	2.32	0.64
1:A:53:THR:HG22	1:A:97:ILE:HG12	1.80	0.63
1:D:212:ASN:ND2	1:D:212:ASN:H	1.98	0.62
1:D:120:GLU:HG2	1:D:121:GLN:HG3	1.83	0.61
1:D:24:ASP:OD1	1:D:25:ASN:N	2.36	0.59
1:D:110:PRO:HA	1:D:243:ILE:HD13	1.84	0.59
1:A:15:MET:HG3	1:A:43:TYR:CZ	2.38	0.58
1:D:34:ILE:HG12	1:D:44:LEU:HB2	1.85	0.58
1:D:120:GLU:CG	1:D:121:GLN:N	2.64	0.58
1:D:116:MET:HG2	1:D:212:ASN:OD1	2.04	0.57
1:A:298:ILE:O	1:A:302:THR:HG23	2.04	0.57
1:D:252:LEU:HD13	1:D:260:ILE:HG23	1.85	0.57
1:D:150:ASN:ND2	1:D:226:ILE:HD11	2.20	0.56
1:D:117:SER:O	1:D:119:GLU:HG2	2.05	0.56
1:A:40:SER:HG	1:A:63:TYR:HH	1.54	0.55
1:A:10:THR:HG21	1:D:41:VAL:HG21	1.87	0.55
1:A:55:PHE:HB2	1:D:13:LYS:HE3	1.89	0.55
1:D:113:TYR:CE1	1:D:121:GLN:HG2	2.42	0.54
1:D:60:LYS:HB3	1:D:61:LYS:C	2.28	0.54
1:B:78:GLU:C	1:B:134:GLN:HE22	2.11	0.54
1:B:119:GLU:HG2	1:B:120:GLU:N	2.22	0.53
1:D:226:ILE:HG12	1:D:227:ASP:H	1.73	0.53
1:D:291:ILE:O	1:D:295:ARG:HG3	2.09	0.53
1:D:112:ILE:O	1:D:116:MET:HG3	2.09	0.53
1:B:78:GLU:O	1:B:134:GLN:NE2	2.39	0.53
1:D:77:LEU:HD13	1:D:138:LEU:HD11	1.91	0.52
1:D:15:MET:O	1:D:19:ILE:HG12	2.09	0.52
1:B:94:GLU:O	1:C:13:LYS:NZ	2.37	0.52
1:A:11:ASN:OD1	1:D:11:ASN:HB2	2.10	0.52
1:D:59:LYS:O	1:D:60:LYS:HE2	2.10	0.52
1:A:226:ILE:HG12	1:A:227:ASP:H	1.75	0.52
1:D:49:TYR:OH	1:D:87:GLU:OE2	2.28	0.51
1:D:48:GLU:O	1:D:49:TYR:CD1	2.61	0.50
1:D:113:TYR:CZ	1:D:121:GLN:HG2	2.47	0.50
1:B:127:ASP:OD2	1:B:213:ARG:NH1	2.45	0.49
1:D:116:MET:SD	1:D:120:GLU:HB2	2.52	0.49
1:D:60:LYS:HB3	1:D:61:LYS:O	2.12	0.49

*Continued on next page...*

*Continued from previous page...*

Atom-1	Atom-2	Interatomic distance (Å)	Clash overlap (Å)
1:B:292:GLU:CG	1:B:296:LYS:HE3	2.42	0.49
1:D:73:LEU:HG	1:D:77:LEU:HD22	1.95	0.48
1:D:292:GLU:HG2	1:D:296:LYS:HE2	1.95	0.48
1:D:117:SER:H	1:D:120:GLU:HB3	1.78	0.48
1:A:66:GLU:HG2	1:A:70:TYR:CE2	2.49	0.48
1:D:152:GLN:NE2	4:D:638:HOH:O	2.44	0.48
1:A:133[A]:ARG:NH1	4:A:612:HOH:O	2.46	0.48
1:A:288:GLN:O	1:A:288:GLN:HG3	2.14	0.47
1:A:82:LYS:HE2	1:A:215:THR:O	2.14	0.47
1:B:34:ILE:HG21	1:B:44:LEU:HB2	1.97	0.47
1:B:11:ASN:CG	1:C:10:THR:HG23	2.35	0.47
1:D:29:ASP:H	1:D:46:ASN:HD21	1.62	0.47
1:D:153:ASN:O	1:D:157:GLU:HG3	2.13	0.47
1:C:56:SER:OG	1:C:57:THR:N	2.48	0.47
1:D:46:ASN:C	1:D:48:GLU:H	2.18	0.46
1:A:69:ILE:HG22	1:A:73:LEU:HD12	1.97	0.46
1:B:84:PRO:HB3	1:B:100:TYR:CD2	2.51	0.46
1:D:122:ASN:O	1:D:126:ARG:N	2.46	0.46
1:D:27:LYS:HD2	1:D:27:LYS:N	2.31	0.45
1:D:271:GLU:HG2	1:D:301:ARG:HH22	1.81	0.45
1:D:116:MET:HB2	1:D:120:GLU:CD	2.36	0.45
1:A:279:ILE:HG23	1:A:291:ILE:HG23	1.98	0.45
1:D:80:ASN:OD1	1:D:80:ASN:N	2.47	0.45
1:C:48:GLU:HG3	1:C:49:TYR:CD2	2.52	0.45
1:D:203:CYS:SG	1:D:243:ILE:HG12	2.57	0.44
1:D:54:LYS:NZ	4:D:623:HOH:O	2.42	0.44
1:A:10:THR:HG22	1:D:11:ASN:ND2	2.33	0.44
1:C:291:ILE:O	1:C:295:ARG:HG3	2.18	0.44
1:B:162:ARG:HD2	1:B:166:TYR:CG	2.52	0.44
1:B:53:THR:HB	1:B:97:ILE:HG12	2.00	0.44
1:B:111:GLU:O	1:B:114:SER:OG	2.27	0.44
1:C:244:GLY:O	1:C:247:PHE:HB3	2.18	0.43
1:B:183:ARG:NH1	1:B:272:GLU:OE1	2.47	0.43
1:D:55:PHE:O	1:D:56:SER:OG	2.25	0.43
1:B:90:TYR:O	1:B:96:SER:HA	2.18	0.43
1:A:291:ILE:O	1:A:295:ARG:HG3	2.19	0.43
1:A:22:TYR:HE1	1:D:17:TYR:HH	1.66	0.43
1:A:54:LYS:O	4:A:644:HOH:O	2.21	0.43
1:D:117:SER:N	1:D:120:GLU:HB3	2.33	0.43
1:A:174:LYS:O	1:A:178:GLU:HB2	2.18	0.43
1:B:15:MET:CE	1:B:53:THR:HG21	2.49	0.42

*Continued on next page...*

*Continued from previous page...*

Atom-1	Atom-2	Interatomic distance (Å)	Clash overlap (Å)
1:C:117:SER:O	1:C:121:GLN:HG3	2.19	0.42
1:A:102:GLU:OE1	1:A:104:LYS:NZ	2.49	0.42
1:C:147:THR:HA	1:C:225:ILE:HB	2.01	0.42
1:A:209:ASP:OD2	1:A:213:ARG:HB3	2.19	0.42
1:D:29:ASP:HB2	1:D:46:ASN:ND2	2.35	0.42
1:D:133:ARG:HD2	1:D:255:TYR:CE1	2.54	0.42
1:D:116:MET:HB3	1:D:120:GLU:CB	2.49	0.42
1:D:123:LEU:O	1:D:123:LEU:HD12	2.20	0.42
1:B:147:THR:HG22	1:B:225:ILE:HB	2.02	0.42
1:B:289:GLU:O	1:B:293:ASN:HB2	2.19	0.42
1:D:212:ASN:N	1:D:212:ASN:ND2	2.49	0.41
1:D:25:ASN:O	1:D:27:LYS:HD2	2.20	0.41
1:D:180:PHE:CE1	1:D:273:TYR:HB2	2.56	0.41
1:A:300:LYS:HB2	1:A:300:LYS:HE2	1.86	0.41
1:B:159:ILE:HA	1:B:159:ILE:HD13	1.88	0.41
1:C:112:ILE:HG22	1:C:116:MET:HE3	2.02	0.41
1:D:123:LEU:CD1	1:D:213:ARG:HD3	2.43	0.41
1:D:53:THR:HG22	1:D:97:ILE:HG12	2.02	0.41
1:C:64:ALA:O	1:C:67:LYS:HB3	2.20	0.41
1:D:162:ARG:HD2	1:D:166:TYR:CD1	2.56	0.41
1:D:23:PHE:CE1	1:D:88:TYR:HB3	2.56	0.41
1:A:292:GLU:O	1:A:296:LYS:HG2	2.21	0.41
1:C:54:LYS:HZ2	1:C:57:THR:HB	1.86	0.41
1:B:289:GLU:H	1:B:289:GLU:HG2	1.66	0.41
1:D:180:PHE:CZ	1:D:273:TYR:HB2	2.56	0.41
1:B:226:ILE:HG12	1:B:227:ASP:H	1.86	0.41
1:D:118:GLU:N	1:D:120:GLU:OE2	2.54	0.40
1:D:111:GLU:HA	1:D:114:SER:HB3	2.02	0.40
1:A:22:TYR:HE1	1:D:17:TYR:OH	2.03	0.40
1:A:287:LYS:HD2	1:A:287:LYS:N	2.36	0.40
1:A:178:GLU:O	1:A:182:GLU:HG3	2.21	0.40
1:B:250:ASP:O	1:B:254:MET:HG3	2.22	0.40
1:D:228:GLU:OE1	1:D:258:ILE:HD11	2.22	0.40
1:A:123:LEU:HD22	1:A:213:ARG:NH2	2.36	0.40

All (1) symmetry-related close contacts are listed below. The label for Atom-2 includes the symmetry operator and encoded unit-cell translations to be applied.

Atom-1	Atom-2	Interatomic distance (Å)	Clash overlap (Å)
1:B:213:ARG:NH2	1:D:158:TYR:OH[1_454]	2.15	0.05

## 5.3 Torsion angles

### 5.3.1 Protein backbone

In the following table, the Percentiles column shows the percent Ramachandran outliers of the chain as a percentile score with respect to all X-ray entries followed by that with respect to entries of similar resolution.

The Analysed column shows the number of residues for which the backbone conformation was analysed, and the total number of residues.

Mol	Chain	Analysed	Favoured	Allowed	Outliers	Percentiles	
1	A	300/305 (98%)	286 (95%)	13 (4%)	1 (0%)	46	57
1	B	292/305 (96%)	276 (94%)	14 (5%)	2 (1%)	26	31
1	C	290/305 (95%)	274 (94%)	15 (5%)	1 (0%)	46	57
1	D	291/305 (95%)	268 (92%)	18 (6%)	5 (2%)	11	10
All	All	1173/1220 (96%)	1104 (94%)	60 (5%)	9 (1%)	24	27

All (9) Ramachandran outliers are listed below:

Mol	Chain	Res	Type
1	D	212	ASN
1	D	49	TYR
1	D	60	LYS
1	D	118	GLU
1	D	47	ASN
1	B	24	ASP
1	B	71	ASN
1	A	226	ILE
1	C	226	ILE

### 5.3.2 Protein sidechains

In the following table, the Percentiles column shows the percent sidechain outliers of the chain as a percentile score with respect to all X-ray entries followed by that with respect to entries of similar resolution.

The Analysed column shows the number of residues for which the sidechain conformation was analysed, and the total number of residues.

Mol	Chain	Analysed	Rotameric	Outliers	Percentiles	
1	A	277/281 (99%)	275 (99%)	2 (1%)	88	95
1	B	272/281 (97%)	268 (98%)	4 (2%)	72	85

*Continued on next page...*

*Continued from previous page...*

Mol	Chain	Analysed	Rotameric	Outliers	Percentiles	
1	C	269/281 (96%)	266 (99%)	3 (1%)	80	90
1	D	270/281 (96%)	265 (98%)	5 (2%)	65	81
All	All	1088/1124 (97%)	1074 (99%)	14 (1%)	76	87

All (14) residues with a non-rotameric sidechain are listed below:

Mol	Chain	Res	Type
1	A	172	ILE
1	A	178	GLU
1	B	119	GLU
1	B	145	GLU
1	B	161	LEU
1	B	293	ASN
1	C	10	THR
1	C	145	GLU
1	C	161	LEU
1	D	25	ASN
1	D	123	LEU
1	D	211	ASN
1	D	212	ASN
1	D	213	ARG

Some sidechains can be flipped to improve hydrogen bonding and reduce clashes. All (2) such sidechains are listed below:

Mol	Chain	Res	Type
1	D	46	ASN
1	D	212	ASN

### 5.3.3 RNA ⓘ

There are no RNA molecules in this entry.

## 5.4 Non-standard residues in protein, DNA, RNA chains ⓘ

There are no non-standard protein/DNA/RNA residues in this entry.

## 5.5 Carbohydrates [i](#)

There are no carbohydrates in this entry.

## 5.6 Ligand geometry [i](#)

Of 12 ligands modelled in this entry, 8 are monoatomic - leaving 4 for Mogul analysis.

In the following table, the Counts columns list the number of bonds (or angles) for which Mogul statistics could be retrieved, the number of bonds (or angles) that are observed in the model and the number of bonds (or angles) that are defined in the chemical component dictionary. The Link column lists molecule types, if any, to which the group is linked. The Z score for a bond length (or angle) is the number of standard deviations the observed value is removed from the expected value. A bond length (or angle) with  $|Z| > 2$  is considered an outlier worth inspection. RMSZ is the root-mean-square of all Z scores of the bond lengths (or angles).

Mol	Type	Chain	Res	Link	Bond lengths			Bond angles		
					Counts	RMSZ	# $ Z  > 2$	Counts	RMSZ	# $ Z  > 2$
2	GDP	A	500	3	23,30,30	1.29	3 (13%)	30,47,47	1.88	9 (30%)
2	GDP	B	500	3	23,30,30	1.20	2 (8%)	30,47,47	1.90	7 (23%)
2	GDP	C	500	3	23,30,30	1.19	2 (8%)	30,47,47	1.74	6 (20%)
2	GDP	D	500	3	23,30,30	1.22	2 (8%)	30,47,47	1.96	8 (26%)

In the following table, the Chirals column lists the number of chiral outliers, the number of chiral centers analysed, the number of these observed in the model and the number defined in the chemical component dictionary. Similar counts are reported in the Torsion and Rings columns. '-' means no outliers of that kind were identified.

Mol	Type	Chain	Res	Link	Chirals	Torsions	Rings
2	GDP	A	500	3	-	0/12/32/32	0/3/3/3
2	GDP	B	500	3	-	0/12/32/32	0/3/3/3
2	GDP	C	500	3	-	0/12/32/32	0/3/3/3
2	GDP	D	500	3	-	0/12/32/32	0/3/3/3

All (9) bond length outliers are listed below:

Mol	Chain	Res	Type	Atoms	Z	Observed(Å)	Ideal(Å)
2	A	500	GDP	O4'-C1'	2.35	1.44	1.41
2	D	500	GDP	C5-C4	3.00	1.47	1.40
2	B	500	GDP	C5-C4	3.04	1.47	1.40
2	C	500	GDP	C5-C4	3.25	1.47	1.40
2	A	500	GDP	C5-C4	3.27	1.47	1.40
2	C	500	GDP	C6-C5	3.42	1.48	1.41

*Continued on next page...*

*Continued from previous page...*

Mol	Chain	Res	Type	Atoms	Z	Observed(Å)	Ideal(Å)
2	A	500	GDP	C6-C5	3.48	1.48	1.41
2	B	500	GDP	C6-C5	3.69	1.48	1.41
2	D	500	GDP	C6-C5	3.82	1.48	1.41

All (30) bond angle outliers are listed below:

Mol	Chain	Res	Type	Atoms	Z	Observed(°)	Ideal(°)
2	D	500	GDP	C2'-C1'-N9	-4.83	106.92	114.29
2	A	500	GDP	C5-C6-N1	-4.60	117.30	123.59
2	B	500	GDP	C5-C6-N1	-4.32	117.69	123.59
2	C	500	GDP	C5-C6-N1	-4.31	117.70	123.59
2	D	500	GDP	C5-C6-N1	-4.30	117.71	123.59
2	B	500	GDP	PA-O3A-PB	-4.03	119.14	132.67
2	A	500	GDP	C4-C5-N7	-3.86	105.93	109.48
2	C	500	GDP	C6-C5-C4	-3.32	116.93	120.90
2	B	500	GDP	N3-C2-N1	-3.18	122.60	127.44
2	D	500	GDP	PA-O3A-PB	-3.14	122.13	132.67
2	D	500	GDP	C6-C5-C4	-3.11	117.18	120.90
2	B	500	GDP	C4-C5-N7	-3.07	106.66	109.48
2	B	500	GDP	C6-C5-C4	-3.06	117.24	120.90
2	B	500	GDP	C2'-C1'-N9	-3.01	109.69	114.29
2	D	500	GDP	N3-C2-N1	-2.97	122.92	127.44
2	C	500	GDP	C4-C5-N7	-2.89	106.82	109.48
2	C	500	GDP	PA-O3A-PB	-2.73	123.50	132.67
2	A	500	GDP	C6-C5-C4	-2.72	117.65	120.90
2	C	500	GDP	N3-C2-N1	-2.70	123.34	127.44
2	D	500	GDP	C4-C5-N7	-2.69	107.00	109.48
2	A	500	GDP	N3-C2-N1	-2.68	123.36	127.44
2	A	500	GDP	PA-O3A-PB	-2.61	123.91	132.67
2	A	500	GDP	O2'-C2'-C3'	-2.13	104.90	111.83
2	D	500	GDP	O3B-PB-O3A	2.13	114.76	105.09
2	A	500	GDP	O2B-PB-O3A	2.20	115.08	105.09
2	A	500	GDP	O2A-PA-O3A	2.24	115.24	105.09
2	D	500	GDP	C6-N1-C2	4.53	122.23	115.94
2	A	500	GDP	C6-N1-C2	4.59	122.30	115.94
2	C	500	GDP	C6-N1-C2	4.66	122.41	115.94
2	B	500	GDP	C6-N1-C2	4.83	122.64	115.94

There are no chirality outliers.

There are no torsion outliers.

There are no ring outliers.



No monomer is involved in short contacts.

## 5.7 Other polymers

There are no such residues in this entry.

## 5.8 Polymer linkage issues

There are no chain breaks in this entry.

## 6 Fit of model and data

### 6.1 Protein, DNA and RNA chains

In the following table, the column labelled ‘#RSRZ> 2’ contains the number (and percentage) of RSRZ outliers, followed by percent RSRZ outliers for the chain as percentile scores relative to all X-ray entries and entries of similar resolution. The OWAB column contains the minimum, median, 95<sup>th</sup> percentile and maximum values of the occupancy-weighted average B-factor per residue. The column labelled ‘Q< 0.9’ lists the number of (and percentage) of residues with an average occupancy less than 0.9.

Mol	Chain	Analysed	<RSRZ>	#RSRZ>2	OWAB(Å <sup>2</sup> )	Q<0.9
1	A	299/305 (98%)	0.30	18 (6%) 25 33	47, 64, 102, 135	0
1	B	296/305 (97%)	0.10	7 (2%) 62 71	46, 63, 89, 146	0
1	C	293/305 (96%)	0.07	4 (1%) 78 83	42, 63, 97, 137	1 (0%)
1	D	295/305 (96%)	0.57	31 (10%) 8 12	47, 73, 128, 164	2 (0%)
All	All	1183/1220 (96%)	0.26	60 (5%) 32 41	42, 65, 107, 164	3 (0%)

All (60) RSRZ outliers are listed below:

Mol	Chain	Res	Type	RSRZ
1	D	120	GLU	5.8
1	D	112	ILE	5.3
1	D	115	THR	4.7
1	A	303	TYR	4.6
1	C	38	TYR	4.4
1	D	230	CYS	4.4
1	D	211	ASN	4.2
1	A	6	ASP	4.1
1	D	114	SER	3.8
1	D	116	MET	3.5
1	B	6	ASP	3.5
1	C	240	GLU	3.4
1	D	132	LEU	3.4
1	D	212	ASN	3.4
1	D	59	LYS	3.2
1	C	29	ASP	3.1
1	D	119	GLU	3.0
1	D	290	PHE	3.0
1	A	290	PHE	2.9
1	D	28	VAL	2.9
1	A	302	THR	2.8

*Continued on next page...*

*Continued from previous page...*

Mol	Chain	Res	Type	RSRZ
1	D	220	PHE	2.7
1	B	119	GLU	2.7
1	D	106	THR	2.7
1	A	172	ILE	2.7
1	D	109	THR	2.7
1	A	221	GLY	2.6
1	A	97	ILE	2.6
1	D	110	PRO	2.5
1	D	201	PHE	2.5
1	D	30	SER	2.4
1	B	25	ASN	2.4
1	D	111	GLU	2.4
1	D	31	ILE	2.4
1	B	8	ASN	2.4
1	D	286	ILE	2.4
1	A	282	GLY	2.4
1	A	98	LEU	2.3
1	D	113	TYR	2.3
1	B	304	LYS	2.3
1	C	34	ILE	2.3
1	D	117	SER	2.2
1	A	299	TYR	2.2
1	A	52	LYS	2.2
1	D	27	LYS	2.2
1	B	7	ASP	2.2
1	D	198	HIS	2.2
1	A	274	TYR	2.1
1	D	200	ASP	2.1
1	A	63	TYR	2.1
1	A	300	LYS	2.1
1	A	222	ASP	2.1
1	D	210	GLY	2.1
1	B	200	ASP	2.1
1	A	7	ASP	2.1
1	A	223	SER	2.1
1	A	62	GLY	2.0
1	D	159	ILE	2.0
1	D	233	ILE	2.0
1	D	49	TYR	2.0

## 6.2 Non-standard residues in protein, DNA, RNA chains [i](#)

There are no non-standard protein/DNA/RNA residues in this entry.

## 6.3 Carbohydrates [i](#)

There are no carbohydrates in this entry.

## 6.4 Ligands [i](#)

In the following table, the Atoms column lists the number of modelled atoms in the group and the number defined in the chemical component dictionary. LLDF column lists the quality of electron density of the group with respect to its neighbouring residues in protein, DNA or RNA chains. The B-factors column lists the minimum, median, 95<sup>th</sup> percentile and maximum values of B factors of atoms in the group. The column labelled 'Q< 0.9' lists the number of atoms with occupancy less than 0.9.

Mol	Type	Chain	Res	Atoms	RSCC	RSR	LLDF	B-factors(Å <sup>2</sup> )	Q<0.9
2	GDP	A	500	28/28	0.95	0.18	0.20	43,53,68,72	0
2	GDP	C	500	28/28	0.95	0.17	-0.03	49,56,70,85	0
3	MG	A	502	1/1	0.90	0.23	-0.10	73,73,73,73	0
2	GDP	D	500	28/28	0.96	0.15	-0.12	60,68,76,78	0
2	GDP	B	500	28/28	0.97	0.15	-0.29	52,61,68,73	0
3	MG	B	502	1/1	0.83	0.17	-0.69	66,66,66,66	0
3	MG	D	501	1/1	0.88	0.15	-	96,96,96,96	0
3	MG	B	501	1/1	0.93	0.07	-	53,53,53,53	0
3	MG	D	502	1/1	0.98	0.12	-	60,60,60,60	0
3	MG	C	501	1/1	0.94	0.09	-	53,53,53,53	0
3	MG	A	501	1/1	0.85	0.13	-	54,54,54,54	0
3	MG	C	502	1/1	0.98	0.15	-	52,52,52,52	0

## 6.5 Other polymers [i](#)

There are no such residues in this entry.