



# Full wwPDB X-ray Structure Validation Report ⓘ

Feb 1, 2016 – 11:20 AM GMT

PDB ID : 3OS0  
Title : PFV strand transfer complex (STC) at 2.81 Å resolution  
Authors : Maertens, G.N.; Hare, S.; Cherepanov, P.  
Deposited on : 2010-09-08  
Resolution : 2.81 Å(reported)

This is a Full wwPDB X-ray Structure Validation Report for a publicly released PDB entry.  
We welcome your comments at [validation@mail.wwpdb.org](mailto:validation@mail.wwpdb.org)  
A user guide is available at  
<http://wwpdb.org/validation/2016/XrayValidationReportHelp>  
with specific help available everywhere you see the ⓘ symbol.

---

The following versions of software and data (see [references ⓘ](#)) were used in the production of this report:

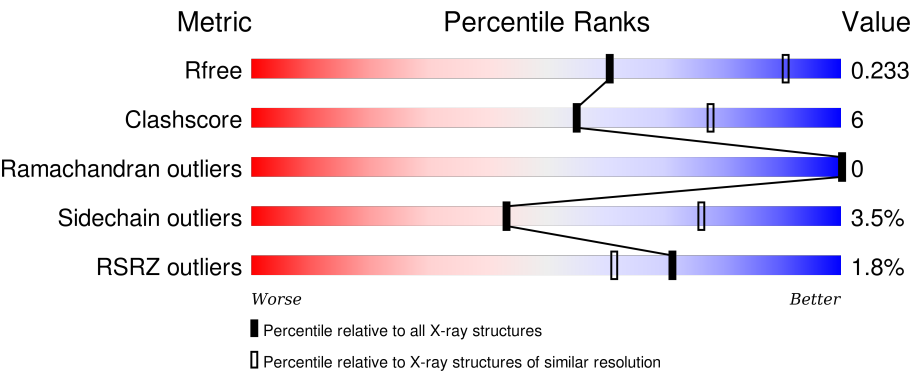
MolProbity : 4.02b-467  
Mogul : 1.7 (RC4), CSD as536be (2015)  
Xtriage (Phenix) : 1.9-1692  
EDS : rb-20026688  
Percentile statistics : 20151230.v01 (using entries in the PDB archive December 30th 2015)  
Refmac : 5.8.0135  
CCP4 : 6.5.0  
Ideal geometry (proteins) : Engh & Huber (2001)  
Ideal geometry (DNA, RNA) : Parkinson et al. (1996)  
Validation Pipeline (wwPDB-VP) : trunk26865

# 1 Overall quality at a glance i

The following experimental techniques were used to determine the structure:  
*X-RAY DIFFRACTION*

The reported resolution of this entry is 2.81 Å.

Percentile scores (ranging between 0-100) for global validation metrics of the entry are shown in the following graphic. The table shows the number of entries on which the scores are based.



Metric	Whole archive (#Entries)	Similar resolution (#Entries, resolution range(Å))
R <sub>free</sub>	91344	2676 (2.84-2.80)
Clashscore	102246	3124 (2.84-2.80)
Ramachandran outliers	100387	3072 (2.84-2.80)
Sidechain outliers	100360	3074 (2.84-2.80)
RSRZ outliers	91569	2690 (2.84-2.80)

The table below summarises the geometric issues observed across the polymeric chains and their fit to the electron density. The red, orange, yellow and green segments on the lower bar indicate the fraction of residues that contain outliers for  $\geq 3$ , 2, 1 and 0 types of geometric quality criteria. A grey segment represents the fraction of residues that are not modelled. The numeric value for each fraction is indicated below the corresponding segment, with a dot representing fractions  $\leq 5\%$ . The upper red bar (where present) indicates the fraction of residues that have poor fit to the electron density. The numeric value is given above the bar.

Mol	Chain	Length	Quality of chain
1	A	395	<div><div>%</div><div><div></div><div></div><div></div><div></div></div><div>75%17%•8%</div></div>
1	B	395	<div><div>2%</div><div><div></div><div></div><div></div><div></div></div><div>40%7%53%</div></div>
2	C	19	<div><div></div><div><div></div><div></div><div></div><div></div></div><div>26%68%5%</div></div>
3	D	17	<div><div></div><div><div></div><div></div><div></div><div></div></div><div>65%29%6%</div></div>
4	t	13	<div><div>15%</div><div><div></div><div></div><div></div><div></div></div><div>31%23%46%</div></div>

Continued on next page...

Continued from previous page...

Mol	Chain	Length	Quality of chain
5	T	17	<p>6% 18% 18% 29% 35%</p>

## 2 Entry composition

There are 8 unique types of molecules in this entry. The entry contains 5428 atoms, of which 0 are hydrogens and 0 are deuteriums.

In the tables below, the ZeroOcc column contains the number of atoms modelled with zero occupancy, the AltConf column contains the number of residues with at least one atom in alternate conformation and the Trace column contains the number of residues modelled with at most 2 atoms.

- Molecule 1 is a protein called Integrase.

Mol	Chain	Residues	Atoms					ZeroOcc	AltConf	Trace
1	A	365	Total	C	N	O	S	0	0	0
			2892	1856	510	522	4			
1	B	184	Total	C	N	O	S	0	0	0
			1431	932	231	267	1			

There are 10 discrepancies between the modelled and reference sequences:

Chain	Residue	Modelled	Actual	Comment	Reference
A	-2	GLY	-	EXPRESSION TAG	UNP P14350
A	-1	PRO	-	EXPRESSION TAG	UNP P14350
A	0	GLY	-	EXPRESSION TAG	UNP P14350
A	217	SER	GLY	SEE REMARK 999	UNP P14350
A	218	GLY	SER	SEE REMARK 999	UNP P14350
B	-2	GLY	-	EXPRESSION TAG	UNP P14350
B	-1	PRO	-	EXPRESSION TAG	UNP P14350
B	0	GLY	-	EXPRESSION TAG	UNP P14350
B	217	SER	GLY	SEE REMARK 999	UNP P14350
B	218	GLY	SER	SEE REMARK 999	UNP P14350

- Molecule 2 is a DNA chain called DNA (5'-D(\*AP\*TP\*TP\*GP\*TP\*CP\*AP\*TP\*GP\*GP\*AP\*AP\*TP\*TP\*TP\*CP\*GP\*CP\*A)-3').

Mol	Chain	Residues	Atoms					ZeroOcc	AltConf	Trace
2	C	19	Total	C	N	O	P	0	0	0
			387	187	68	114	18			

- Molecule 3 is a DNA chain called DNA (5'-D(\*TP\*GP\*CP\*GP\*AP\*AP\*AP\*TP\*TP\*CP\*CP\*AP\*TP\*GP\*AP\*CP\*A)-3').

Mol	Chain	Residues	Atoms					ZeroOcc	AltConf	Trace
3	D	17	Total	C	N	O	P	0	0	0
			345	166	65	98	16			

- Molecule 4 is a DNA chain called DNA (5'-D(\*CP\*CP\*CP\*GP\*AP\*G\*GP\*CP\*AP\*CP\*GP\*TP\*G)-3').

Mol	Chain	Residues	Atoms					ZeroOcc	AltConf	Trace
4	t	7	Total	C	N	O	P	0	0	0
			142	68	28	40	6			

- Molecule 5 is a DNA chain called DNA (5'-D(P\*CP\*TP\*AP\*GP\*CP\*AP\*CP\*GP\*TP\*GP\*CP\*CP\*TP\*CP\*GP\*GP\*G)-3').

Mol	Chain	Residues	Atoms					ZeroOcc	AltConf	Trace
5	T	11	Total	C	N	O	P	0	0	0
			224	106	41	66	11			

- Molecule 6 is ZINC ION (three-letter code: ZN) (formula: Zn).

Mol	Chain	Residues	Atoms		ZeroOcc	AltConf
6	A	1	Total	Zn	0	0
			1	1		

- Molecule 7 is MAGNESIUM ION (three-letter code: MG) (formula: Mg).

Mol	Chain	Residues	Atoms		ZeroOcc	AltConf
7	B	1	Total	Mg	0	0
			1	1		
7	A	1	Total	Mg	0	0
			1	1		

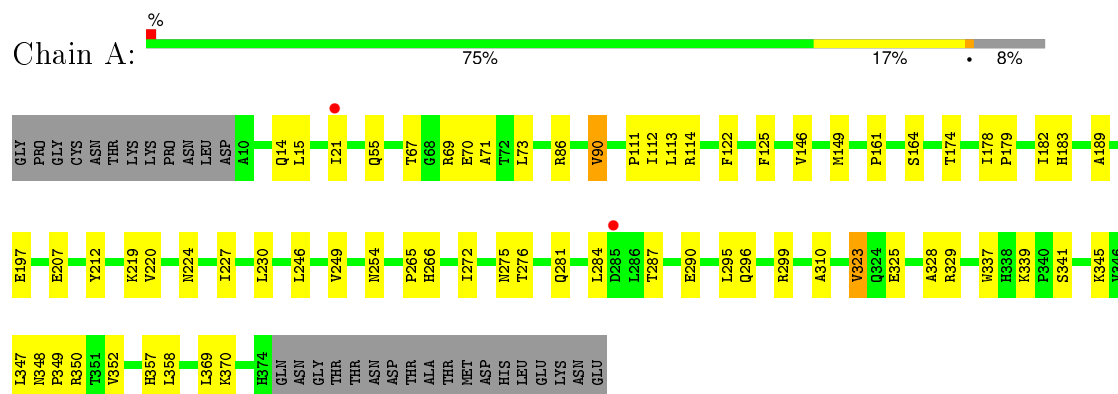
- Molecule 8 is water.

Mol	Chain	Residues	Atoms		ZeroOcc	AltConf
8	A	4	Total	O	0	0
			4	4		

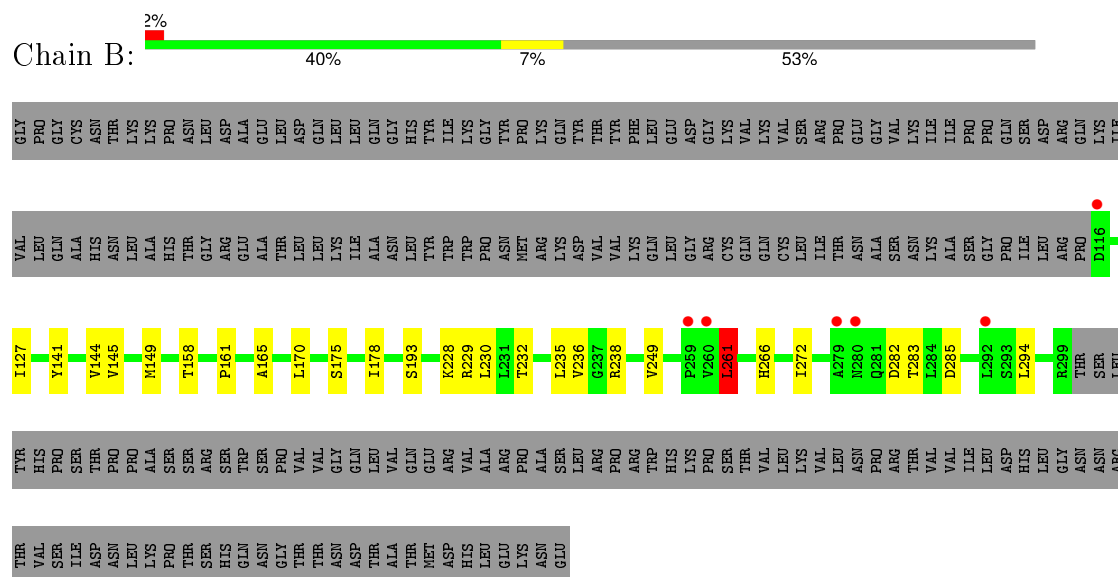
### 3 Residue-property plots [i](#)

These plots are drawn for all protein, RNA and DNA chains in the entry. The first graphic for a chain summarises the proportions of errors displayed in the second graphic. The second graphic shows the sequence view annotated by issues in geometry and electron density. Residues are color-coded according to the number of geometric quality criteria for which they contain at least one outlier: green = 0, yellow = 1, orange = 2 and red = 3 or more. A red dot above a residue indicates a poor fit to the electron density ( $RSRZ > 2$ ). Stretches of 2 or more consecutive residues without any outlier are shown as a green connector. Residues present in the sample, but not in the model, are shown in grey.

#### • Molecule 1: Integrase

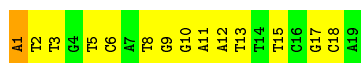


#### • Molecule 1: Integrase

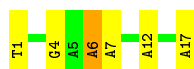


#### • Molecule 2: DNA (5'-D(\*AP\*TP\*TP\*GP\*TP\*CP\*AP\*TP\*GP\*GP\*AP\*AP\*TP\*TP\*TP\*CP\*GP\*CP\*A)-3')

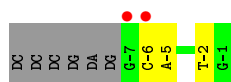
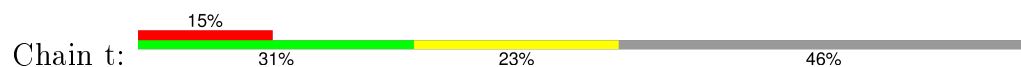




- Molecule 3: DNA (5'-D(\*TP\*GP\*CP\*GP\*AP\*AP\*AP\*TP\*TP\*CP\*CP\*AP\*TP\*GP\*AP\*CP\*A)-3')



- Molecule 4: DNA (5'-D(\*CP\*CP\*CP\*GP\*AP\*G\*GP\*CP\*AP\*CP\*GP\*TP\*G)-3')



- Molecule 5: DNA (5'-D(P\*CP\*TP\*AP\*GP\*CP\*AP\*CP\*GP\*TP\*GP\*CP\*CP\*TP\*CP\*GP\*G P\*G)-3')



## 4 Data and refinement statistics

Property	Value	Source
Space group	P 41 21 2	Depositor
Cell constants a, b, c, $\alpha$ , $\beta$ , $\gamma$	159.86Å 159.86Å 125.11Å 90.00° 90.00° 90.00°	Depositor
Resolution (Å)	39.12 – 2.81 37.03 – 2.81	Depositor EDS
% Data completeness (in resolution range)	98.7 (39.12-2.81) 98.7 (37.03-2.81)	Depositor EDS
$R_{merge}$	0.09	Depositor
$R_{sym}$	(Not available)	Depositor
$\langle I/\sigma(I) \rangle$ <sup>1</sup>	1.99 (at 2.81Å)	Xtriage
Refinement program	REFMAC 5.5.0109	Depositor
R, $R_{free}$	0.208 , 0.241 0.202 , 0.233	Depositor DCC
$R_{free}$ test set	1959 reflections (5.22%)	DCC
Wilson B-factor (Å <sup>2</sup> )	69.1	Xtriage
Anisotropy	0.235	Xtriage
Bulk solvent $k_{sol}$ (e/Å <sup>3</sup> ), $B_{sol}$ (Å <sup>2</sup> )	0.30 , 29.4	EDS
Estimated twinning fraction	No twinning to report.	Xtriage
L-test for twinning <sup>2</sup>	$\langle  L  \rangle = 0.48$ , $\langle L^2 \rangle = 0.31$	Xtriage
Outliers	0 of 39536 reflections	Xtriage
$F_o, F_c$ correlation	0.95	EDS
Total number of atoms	5428	wwPDB-VP
Average B, all atoms (Å <sup>2</sup> )	61.0	wwPDB-VP

Xtriage's analysis on translational NCS is as follows: *The largest off-origin peak in the Patterson function is 2.99% of the height of the origin peak. No significant pseudotranslation is detected.*

<sup>1</sup>Intensities estimated from amplitudes.

<sup>2</sup>Theoretical values of  $\langle |L| \rangle$ ,  $\langle L^2 \rangle$  for acentric reflections are 0.5, 0.375 respectively for untwinned datasets, and 0.333, 0.2 for perfectly twinned datasets.



## 5 Model quality

### 5.1 Standard geometry

Bond lengths and bond angles in the following residue types are not validated in this section: ZN, MG

The Z score for a bond length (or angle) is the number of standard deviations the observed value is removed from the expected value. A bond length (or angle) with  $|Z| > 5$  is considered an outlier worth inspection. RMSZ is the root-mean-square of all Z scores of the bond lengths (or angles).

Mol	Chain	Bond lengths		Bond angles	
		RMSZ	# Z  >5	RMSZ	# Z  >5
1	A	0.46	0/2971	0.60	0/4057
1	B	0.49	0/1472	0.59	1/2017 (0.0%)
2	C	0.89	0/433	1.68	13/667 (1.9%)
3	D	0.88	0/387	1.70	8/595 (1.3%)
4	t	0.97	0/159	1.54	3/244 (1.2%)
5	T	0.98	0/250	1.99	12/383 (3.1%)
All	All	0.60	0/5672	0.99	37/7963 (0.5%)

There are no bond length outliers.

All (37) bond angle outliers are listed below:

Mol	Chain	Res	Type	Atoms	Z	Observed(°)	Ideal(°)
3	D	17	DA	O4'-C1'-N9	10.47	115.33	108.00
5	T	2	DA	O4'-C1'-N9	9.45	114.61	108.00
2	C	1	DA	P-O3'-C3'	9.10	130.62	119.70
5	T	1	DT	P-O3'-C3'	8.95	130.44	119.70
3	D	12	DA	O4'-C1'-N9	-8.76	101.87	108.00
5	T	9	DG	O4'-C1'-N9	8.72	114.10	108.00
3	D	1	DT	P-O3'-C3'	8.71	130.15	119.70
5	T	2	DA	O4'-C4'-C3'	-8.11	101.14	106.00
2	C	3	DT	C5-C4-O4	-7.94	119.34	124.90
5	T	2	DA	P-O3'-C3'	7.64	128.87	119.70
5	T	2	DA	C4'-C3'-C2'	-7.21	96.61	103.10
4	t	-6	DC	P-O3'-C3'	7.15	128.28	119.70
2	C	5	DT	C6-C5-C7	-6.89	118.77	122.90
2	C	8	DT	O4'-C1'-N1	-6.80	103.24	108.00
2	C	12	DA	O4'-C1'-N9	-6.79	103.25	108.00
2	C	3	DT	N3-C4-O4	6.33	123.70	119.90
2	C	13	DT	C6-C5-C7	-6.06	119.26	122.90
5	T	2	DA	C3'-C2'-C1'	-6.04	95.26	102.50

*Continued on next page...*

*Continued from previous page...*

Mol	Chain	Res	Type	Atoms	Z	Observed(°)	Ideal(°)
3	D	4	DG	O4'-C1'-N9	-6.02	103.78	108.00
2	C	18	DC	P-O3'-C3'	5.97	126.86	119.70
5	T	2	DA	O4'-C1'-C2'	-5.96	101.13	105.90
5	T	3	DG	C4'-C3'-C2'	-5.90	97.79	103.10
4	t	-5	DA	O4'-C1'-N9	5.87	112.11	108.00
3	D	17	DA	O4'-C4'-C3'	-5.83	102.17	104.50
2	C	5	DT	O4'-C1'-N1	-5.81	103.93	108.00
5	T	6	DC	O4'-C1'-N1	5.79	112.06	108.00
1	B	261	LEU	CA-CB-CG	5.75	128.52	115.30
3	D	6	DA	P-O3'-C3'	5.59	126.41	119.70
2	C	15	DT	O4'-C1'-N1	-5.51	104.14	108.00
2	C	13	DT	C4-C5-C7	5.48	122.29	119.00
3	D	12	DA	P-O3'-C3'	5.38	126.15	119.70
5	T	1	DT	O4'-C1'-N1	5.37	111.76	108.00
4	t	-2	DT	C6-C5-C7	-5.24	119.75	122.90
5	T	8	DT	N3-C2-O2	-5.24	119.15	122.30
2	C	9	DG	O4'-C1'-N9	5.11	111.58	108.00
2	C	17	DG	O4'-C1'-N9	-5.07	104.45	108.00
3	D	17	DA	C1'-O4'-C4'	-5.03	105.07	110.10

There are no chirality outliers.

There are no planarity outliers.

## 5.2 Too-close contacts ⓘ

In the following table, the Non-H and H(model) columns list the number of non-hydrogen atoms and hydrogen atoms in the chain respectively. The H(added) column lists the number of hydrogen atoms added and optimized by MolProbity. The Clashes column lists the number of clashes within the asymmetric unit, whereas Symm-Clashes lists symmetry related clashes.

Mol	Chain	Non-H	H(model)	H(added)	Clashes	Symm-Clashes
1	A	2892	0	2923	40	0
1	B	1431	0	1405	14	0
2	C	387	0	218	3	0
3	D	345	0	192	1	0
4	t	142	0	79	0	0
5	T	224	0	124	9	0
6	A	1	0	0	0	0
7	A	1	0	0	0	0
7	B	1	0	0	0	0
8	A	4	0	0	0	0

*Continued on next page...*

*Continued from previous page...*

Mol	Chain	Non-H	H(model)	H(added)	Clashes	Symm-Clashes
All	All	5428	0	4941	64	0

The all-atom clashscore is defined as the number of clashes found per 1000 atoms (including hydrogen atoms). The all-atom clashscore for this structure is 6.

All (64) close contacts within the same asymmetric unit are listed below, sorted by their clash magnitude.

Atom-1	Atom-2	Interatomic distance (Å)	Clash overlap (Å)
5:T:5:DA:C2'	5:T:6:DC:H5''	2.01	0.91
5:T:5:DA:H2''	5:T:6:DC:H5''	1.69	0.72
5:T:5:DA:H2'	5:T:6:DC:H5''	1.74	0.68
1:A:111:PRO:HG3	1:A:310:ALA:HA	1.79	0.63
1:A:266:HIS:HE1	1:A:272:ILE:O	1.81	0.63
1:A:281:GLN:HB2	1:A:284:LEU:HD13	1.81	0.63
1:B:228:LYS:O	1:B:232:THR:HG22	1.99	0.61
1:B:236:VAL:HG22	1:B:294:LEU:HD13	1.83	0.61
1:A:348:ASN:HB2	1:A:349:PRO:CD	2.31	0.60
5:T:3:DG:H2'	5:T:4:DC:C6	2.35	0.59
1:A:73:LEU:HD22	1:A:86:ARG:CZ	2.34	0.58
5:T:2:DA:H3'	5:T:2:DA:C8	2.42	0.55
1:B:127:ILE:HA	1:B:144:VAL:O	2.06	0.55
5:T:3:DG:H2'	5:T:4:DC:H6	1.73	0.54
1:A:345:LYS:HD2	1:A:347:LEU:HD23	1.90	0.54
1:A:266:HIS:CE1	1:A:272:ILE:O	2.61	0.54
5:T:2:DA:H2'	5:T:3:DG:O4'	2.07	0.53
1:A:287:THR:OG1	1:A:290:GLU:HG3	2.08	0.53
1:A:73:LEU:HD13	1:A:86:ARG:HG3	1.92	0.52
1:A:161:PRO:O	1:A:189:ALA:HB2	2.12	0.50
1:A:14:GLN:HB2	1:A:21:ILE:HD11	1.94	0.50
1:A:325:GLU:HA	1:A:369:LEU:HD23	1.94	0.50
1:B:283:THR:C	1:B:285:ASP:H	2.14	0.50
1:A:219:LYS:HE3	2:C:6:DC:OP1	2.12	0.49
1:B:261:LEU:H	1:B:261:LEU:HD23	1.78	0.49
1:A:230:LEU:HD23	1:A:249:VAL:HG13	1.95	0.49
1:A:67:THR:HB	1:A:71:ALA:HB3	1.95	0.49
1:A:357:HIS:CE1	1:A:358:LEU:HG	2.47	0.49
1:A:254:ASN:HA	1:A:265:PRO:HG2	1.95	0.49
1:A:122:PHE:O	1:A:179:PRO:HA	2.13	0.48
1:B:127:ILE:HG22	1:B:145:VAL:HG22	1.96	0.47
1:A:224:ASN:HA	1:A:227:ILE:HD12	1.96	0.47
1:A:111:PRO:HG3	1:A:310:ALA:CA	2.44	0.47

*Continued on next page...*

*Continued from previous page...*

Atom-1	Atom-2	Interatomic distance (Å)	Clash overlap (Å)
1:A:328:ALA:O	1:A:329:ARG:HG3	2.15	0.46
1:B:229:ARG:HA	1:B:232:THR:HG22	1.96	0.46
1:B:230:LEU:HD23	1:B:249:VAL:HG13	1.98	0.46
1:A:183:HIS:HA	1:A:207:GLU:O	2.16	0.45
1:A:15:LEU:HD13	1:A:21:ILE:HD12	1.99	0.45
1:A:112:ILE:HA	1:A:350:ARG:CD	2.47	0.45
1:A:276:THR:HG22	1:B:178:ILE:HD12	1.99	0.45
1:A:323:VAL:HG13	1:A:369:LEU:HD22	1.98	0.45
1:A:125:PHE:HB2	1:A:182:ILE:HG12	1.99	0.45
1:A:174:THR:HB	1:A:178:ILE:HD13	1.99	0.45
1:B:158:THR:HB	1:B:165:ALA:HB1	1.98	0.44
1:A:86:ARG:O	1:A:90:VAL:HG13	2.18	0.44
1:A:69:ARG:HD2	1:A:70:GLU:OE2	2.18	0.44
1:B:141:TYR:CE2	1:B:161:PRO:HD3	2.52	0.44
1:A:113:LEU:O	1:A:114:ARG:HD2	2.17	0.44
3:D:6:DA:H1'	3:D:7:DA:H5'	2.00	0.43
1:A:275:ASN:HB3	1:B:178:ILE:HG22	2.00	0.43
2:C:10:DG:H1'	2:C:11:DA:H5'	2.00	0.43
1:B:266:HIS:HE1	1:B:272:ILE:HD12	1.83	0.43
1:A:337:TRP:CG	1:A:370:LYS:HE2	2.54	0.43
1:A:348:ASN:HB2	1:A:349:PRO:HD3	1.97	0.43
2:C:1:DA:H2''	2:C:2:DT:H5'	2.02	0.42
5:T:8:DT:H2''	5:T:9:DG:OP2	2.19	0.42
1:A:212:TYR:CZ	1:A:328:ALA:HB1	2.55	0.42
1:A:337:TRP:CD2	1:A:370:LYS:HE2	2.55	0.41
1:B:170:LEU:HA	1:B:170:LEU:HD23	1.93	0.41
1:A:73:LEU:O	1:A:73:LEU:HG	2.20	0.41
1:A:246:LEU:HD23	1:A:246:LEU:HA	1.95	0.41
1:A:295:LEU:HD21	1:A:299:ARG:NH2	2.36	0.41
1:A:146:VAL:HG23	1:A:220:VAL:HG23	2.03	0.40
5:T:6:DC:H5'	5:T:6:DC:H6	1.86	0.40

There are no symmetry-related clashes.

## 5.3 Torsion angles ⓘ

### 5.3.1 Protein backbone ⓘ

In the following table, the Percentiles column shows the percent Ramachandran outliers of the chain as a percentile score with respect to all X-ray entries followed by that with respect to entries of similar resolution.

The Analysed column shows the number of residues for which the backbone conformation was analysed, and the total number of residues.

Mol	Chain	Analysed	Favoured	Allowed	Outliers	Percentiles	
1	A	363/395 (92%)	346 (95%)	17 (5%)	0	100	100
1	B	182/395 (46%)	175 (96%)	7 (4%)	0	100	100
All	All	545/790 (69%)	521 (96%)	24 (4%)	0	100	100

There are no Ramachandran outliers to report.

### 5.3.2 Protein sidechains ⓘ

In the following table, the Percentiles column shows the percent sidechain outliers of the chain as a percentile score with respect to all X-ray entries followed by that with respect to entries of similar resolution.

The Analysed column shows the number of residues for which the sidechain conformation was analysed, and the total number of residues.

Mol	Chain	Analysed	Rotameric	Outliers	Percentiles	
1	A	323/354 (91%)	313 (97%)	10 (3%)	47	80
1	B	157/354 (44%)	150 (96%)	7 (4%)	34	67
All	All	480/708 (68%)	463 (96%)	17 (4%)	43	76

All (17) residues with a non-rotameric sidechain are listed below:

Mol	Chain	Res	Type
1	A	55	GLN
1	A	90	VAL
1	A	149	MET
1	A	164	SER
1	A	197	GLU
1	A	296	GLN
1	A	323	VAL
1	A	339	LYS
1	A	341	SER
1	A	352	VAL
1	B	149	MET
1	B	175	SER
1	B	193	SER
1	B	235	LEU
1	B	238	ARG

*Continued on next page...*

*Continued from previous page...*

Mol	Chain	Res	Type
1	B	261	LEU
1	B	282	ASP

Some sidechains can be flipped to improve hydrogen bonding and reduce clashes. All (3) such sidechains are listed below:

Mol	Chain	Res	Type
1	A	266	HIS
1	A	357	HIS
1	B	266	HIS

### 5.3.3 RNA [i](#)

There are no RNA molecules in this entry.

## 5.4 Non-standard residues in protein, DNA, RNA chains [i](#)

There are no non-standard protein/DNA/RNA residues in this entry.

## 5.5 Carbohydrates [i](#)

There are no carbohydrates in this entry.

## 5.6 Ligand geometry [i](#)

Of 3 ligands modelled in this entry, 3 are monoatomic - leaving 0 for Mogul analysis.

There are no bond length outliers.

There are no bond angle outliers.

There are no chirality outliers.

There are no torsion outliers.

There are no ring outliers.

No monomer is involved in short contacts.

## 5.7 Other polymers [i](#)

There are no such residues in this entry.

## 5.8 Polymer linkage issues ⓘ

There are no chain breaks in this entry.

## 6 Fit of model and data ⓘ

### 6.1 Protein, DNA and RNA chains ⓘ

In the following table, the column labelled ‘#RSRZ> 2’ contains the number (and percentage) of RSRZ outliers, followed by percent RSRZ outliers for the chain as percentile scores relative to all X-ray entries and entries of similar resolution. The OWAB column contains the minimum, median, 95<sup>th</sup> percentile and maximum values of the occupancy-weighted average B-factor per residue. The column labelled ‘Q< 0.9’ lists the number of (and percentage) of residues with an average occupancy less than 0.9.

Mol	Chain	Analysed	<RSRZ>	#RSRZ>2	OWAB(Å <sup>2</sup> )	Q<0.9
1	A	365/395 (92%)	-0.29	2 (0%) 91 88	40, 53, 98, 115	0
1	B	184/395 (46%)	-0.28	6 (3%) 50 38	46, 61, 114, 126	0
2	C	19/19 (100%)	-0.55	0 100 100	40, 56, 72, 90	0
3	D	17/17 (100%)	-0.64	0 100 100	43, 52, 74, 102	0
4	t	7/13 (53%)	0.67	2 (28%) 1 0	48, 64, 134, 138	0
5	T	11/17 (64%)	-0.27	1 (9%) 11 6	52, 62, 108, 132	0
All	All	603/856 (70%)	-0.29	11 (1%) 71 61	40, 56, 105, 138	0

All (11) RSRZ outliers are listed below:

Mol	Chain	Res	Type	RSRZ
1	B	259	PRO	3.5
1	B	260	VAL	3.3
4	t	-6	DC	3.0
1	B	292	LEU	2.9
1	B	116	ASP	2.4
5	T	10	DC	2.4
1	B	279	ALA	2.3
4	t	-7	DG	2.3
1	B	280	ASN	2.3
1	A	285	ASP	2.0
1	A	21	ILE	2.0

### 6.2 Non-standard residues in protein, DNA, RNA chains ⓘ

There are no non-standard protein/DNA/RNA residues in this entry.



### 6.3 Carbohydrates [i](#)

There are no carbohydrates in this entry.

### 6.4 Ligands [i](#)

In the following table, the Atoms column lists the number of modelled atoms in the group and the number defined in the chemical component dictionary. LLDF column lists the quality of electron density of the group with respect to its neighbouring residues in protein, DNA or RNA chains. The B-factors column lists the minimum, median, 95<sup>th</sup> percentile and maximum values of B factors of atoms in the group. The column labelled 'Q< 0.9' lists the number of atoms with occupancy less than 0.9.

Mol	Type	Chain	Res	Atoms	RSCC	RSR	LLDF	B-factors( $\text{\AA}^2$ )	Q<0.9
6	ZN	A	393	1/1	1.00	0.14	0.06	52,52,52,52	0
7	MG	A	394	1/1	1.00	0.09	-3.59	34,34,34,34	0
7	MG	B	393	1/1	0.97	0.26	-	54,54,54,54	0

### 6.5 Other polymers [i](#)

There are no such residues in this entry.