



Full wwPDB X-ray Structure Validation Report ⓘ

Feb 1, 2016 – 07:25 PM GMT

PDB ID : 4OUB
Title : A 2.20 angstroms X-ray crystal structure of E268A 2-aminomuconate 6-semialdehyde dehydrogenase catalytic intermediate from *Pseudomonas fluorescens*
Authors : Huo, L.; Liu, A.
Deposited on : 2014-02-15
Resolution : 2.19 Å(reported)

This is a Full wwPDB X-ray Structure Validation Report for a publicly released PDB entry.
We welcome your comments at validation@mail.wwpdb.org
A user guide is available at
<http://wwpdb.org/validation/2016/XrayValidationReportHelp>
with specific help available everywhere you see the ⓘ symbol.

The following versions of software and data (see [references ⓘ](#)) were used in the production of this report:

MolProbity : 4.02b-467
Mogul : 1.7 (RC4), CSD as536be (2015)
Xtriage (Phenix) : 1.9-1692
EDS : rb-20026688
Percentile statistics : 20151230.v01 (using entries in the PDB archive December 30th 2015)
Refmac : 5.8.0135
CCP4 : 6.5.0
Ideal geometry (proteins) : Engh & Huber (2001)
Ideal geometry (DNA, RNA) : Parkinson et al. (1996)
Validation Pipeline (wwPDB-VP) : trunk26865

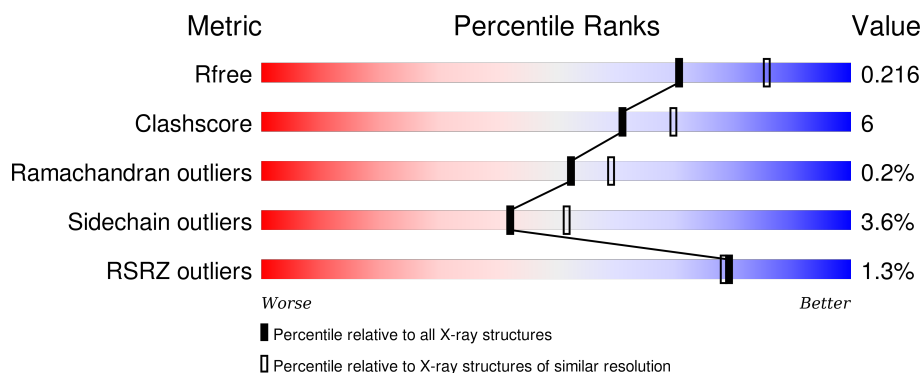
1 Overall quality at a glance

The following experimental techniques were used to determine the structure:

X-RAY DIFFRACTION

The reported resolution of this entry is 2.19 Å.

Percentile scores (ranging between 0-100) for global validation metrics of the entry are shown in the following graphic. The table shows the number of entries on which the scores are based.



Metric	Whole archive (#Entries)	Similar resolution (#Entries, resolution range(Å))
R_{free}	91344	3774 (2.20-2.20)
Clashscore	102246	4477 (2.20-2.20)
Ramachandran outliers	100387	4404 (2.20-2.20)
Sidechain outliers	100360	4405 (2.20-2.20)
RSRZ outliers	91569	3781 (2.20-2.20)

The table below summarises the geometric issues observed across the polymeric chains and their fit to the electron density. The red, orange, yellow and green segments on the lower bar indicate the fraction of residues that contain outliers for ≥ 3 , 2, 1 and 0 types of geometric quality criteria. A grey segment represents the fraction of residues that are not modelled. The numeric value for each fraction is indicated below the corresponding segment, with a dot representing fractions $\leq 5\%$. The upper red bar (where present) indicates the fraction of residues that have poor fit to the electron density. The numeric value is given above the bar.

Mol	Chain	Length	Quality of chain
1	A	483	<div> <div></div> <div>92% 8% .</div> </div>
1	B	483	<div> <div>%</div> <div>89% 9% .</div> </div>
1	C	483	<div> <div>3%</div> <div>84% 15% .</div> </div>
1	D	483	<div> <div>%</div> <div>88% 12% .</div> </div>

The following table lists non-polymeric compounds, carbohydrate monomers and non-standard

residues in protein, DNA, RNA chains that are outliers for geometric or electron-density-fit criteria:

Mol	Type	Chain	Res	Chirality	Geometry	Clashes	Electron density
2	NAD	D	601	-	-	-	X
3	NA	D	602	-	-	-	X

2 Entry composition

There are 5 unique types of molecules in this entry. The entry contains 15770 atoms, of which 0 are hydrogens and 0 are deuteriums.

In the tables below, the ZeroOcc column contains the number of atoms modelled with zero occupancy, the AltConf column contains the number of residues with at least one atom in alternate conformation and the Trace column contains the number of residues modelled with at most 2 atoms.

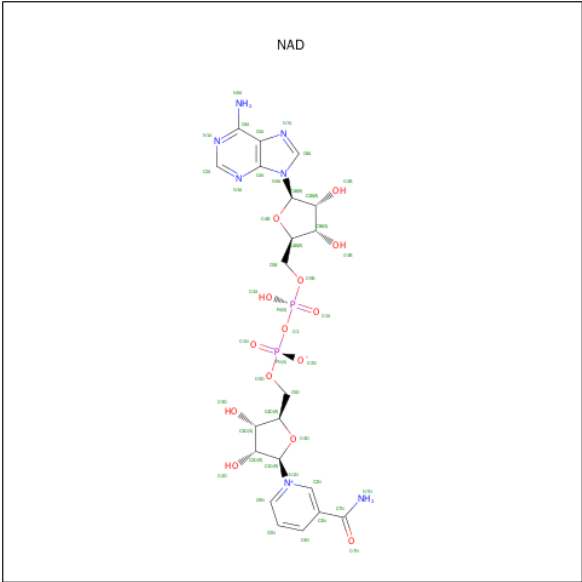
- Molecule 1 is a protein called 2-aminomuconate 6-semialdehyde dehydrogenase.

Mol	Chain	Residues	Atoms					ZeroOcc	AltConf	Trace
1	A	483	Total	C	N	O	S	0	0	0
			3667	2319	637	699	12			
1	B	483	Total	C	N	O	S	0	0	0
			3667	2319	637	699	12			
1	C	483	Total	C	N	O	S	0	0	0
			3667	2319	637	699	12			
1	D	483	Total	C	N	O	S	0	0	0
			3667	2319	637	699	12			

There are 4 discrepancies between the modelled and reference sequences:

Chain	Residue	Modelled	Actual	Comment	Reference
A	268	ALA	GLU	ENGINEERED MUTATION	UNP Q83V33
B	268	ALA	GLU	ENGINEERED MUTATION	UNP Q83V33
C	268	ALA	GLU	ENGINEERED MUTATION	UNP Q83V33
D	268	ALA	GLU	ENGINEERED MUTATION	UNP Q83V33

- Molecule 2 is NICOTINAMIDE-ADENINE-DINUCLEOTIDE (three-letter code: NAD) (formula: $C_{21}H_{27}N_7O_{14}P_2$).

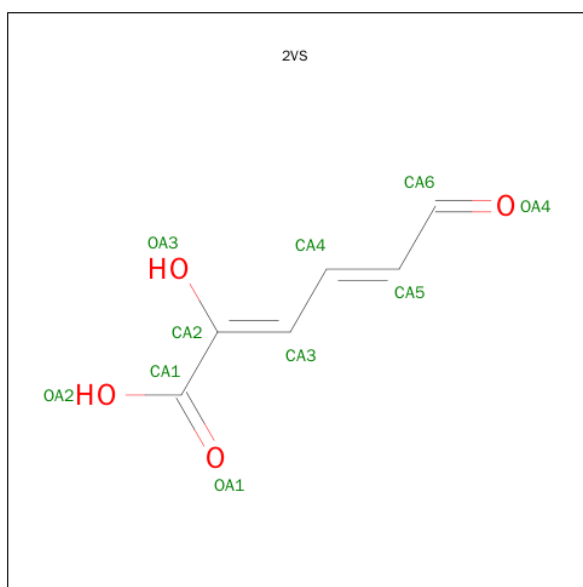


Mol	Chain	Residues	Atoms					ZeroOcc	AltConf
2	A	1	Total	C	N	O	P	0	0
			44	21	7	14	2		
2	B	1	Total	C	N	O	P	0	0
			44	21	7	14	2		
2	C	1	Total	C	N	O	P	0	0
			44	21	7	14	2		
2	D	1	Total	C	N	O	P	0	0
			44	21	7	14	2		

- Molecule 3 is SODIUM ION (three-letter code: NA) (formula: Na).

Mol	Chain	Residues	Atoms		ZeroOcc	AltConf
3	B	1	Total	Na	0	0
			1	1		
3	A	1	Total	Na	0	0
			1	1		
3	D	1	Total	Na	0	0
			1	1		
3	C	1	Total	Na	0	0
			1	1		

- Molecule 4 is (2Z,4E)-2-HYDROXY-6-OXOHEXA-2,4-DIENOIC ACID (three-letter code: 2VS) (formula: C₆H₆O₄).



Mol	Chain	Residues	Atoms			ZeroOcc	AltConf
4	A	1	Total	C	O	0	0
			10	6	4		
4	B	1	Total	C	O	0	0
			10	6	4		
4	C	1	Total	C	O	0	0
			10	6	4		
4	D	1	Total	C	O	0	0
			10	6	4		

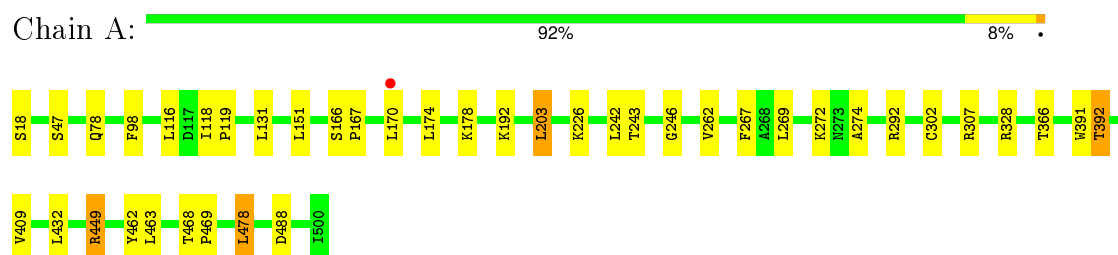
- Molecule 5 is water.

Mol	Chain	Residues	Atoms		ZeroOcc	AltConf
5	A	253	Total	O	0	0
			253	253		
5	B	238	Total	O	0	0
			238	238		
5	C	160	Total	O	0	0
			160	160		
5	D	231	Total	O	0	0
			231	231		

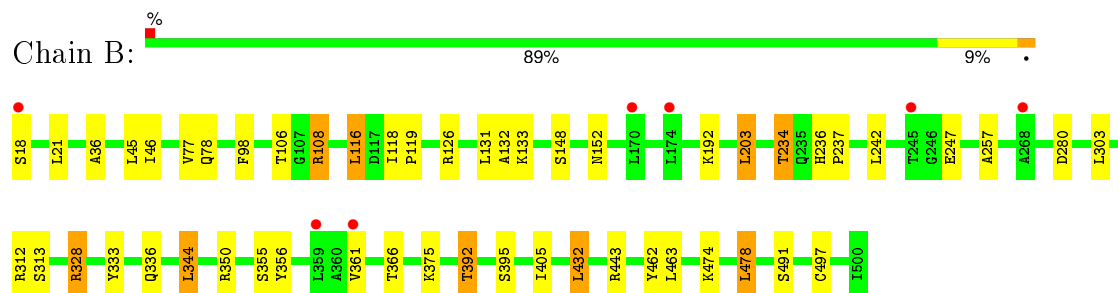
3 Residue-property plots [i](#)

These plots are drawn for all protein, RNA and DNA chains in the entry. The first graphic for a chain summarises the proportions of errors displayed in the second graphic. The second graphic shows the sequence view annotated by issues in geometry and electron density. Residues are color-coded according to the number of geometric quality criteria for which they contain at least one outlier: green = 0, yellow = 1, orange = 2 and red = 3 or more. A red dot above a residue indicates a poor fit to the electron density ($RSRZ > 2$). Stretches of 2 or more consecutive residues without any outlier are shown as a green connector. Residues present in the sample, but not in the model, are shown in grey.

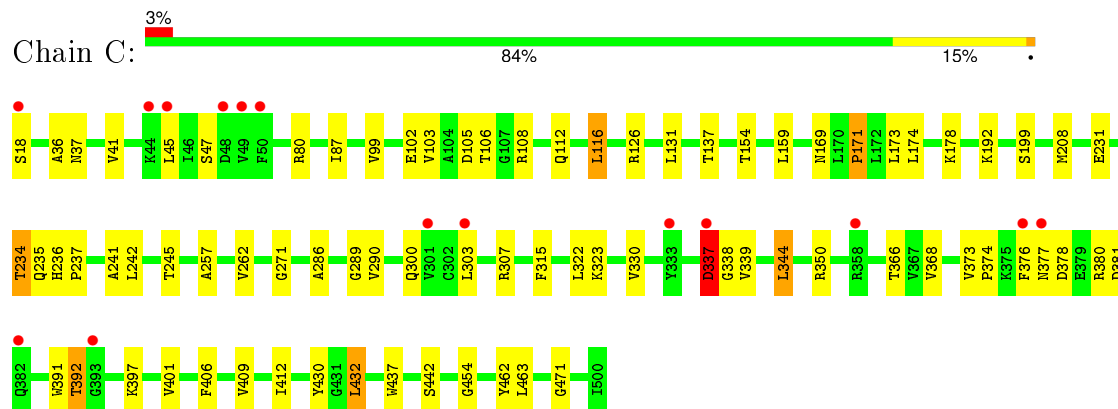
- Molecule 1: 2-aminomuconate 6-semialdehyde dehydrogenase



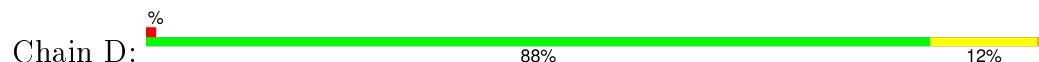
- Molecule 1: 2-aminomuconate 6-semialdehyde dehydrogenase

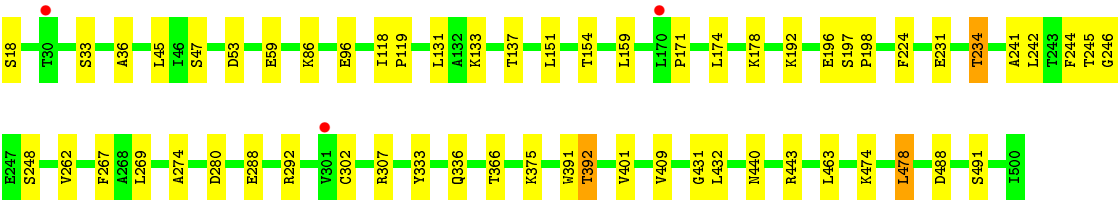


- Molecule 1: 2-aminomuconate 6-semialdehyde dehydrogenase



- Molecule 1: 2-aminomuconate 6-semialdehyde dehydrogenase





4 Data and refinement statistics

Property	Value	Source
Space group	P 21 21 21	Depositor
Cell constants a, b, c, α , β , γ	88.33Å 141.34Å 173.53Å 90.00° 90.00° 90.00°	Depositor
Resolution (Å)	41.00 – 2.19 40.96 – 2.19	Depositor EDS
% Data completeness (in resolution range)	98.7 (41.00-2.19) 90.7 (40.96-2.19)	Depositor EDS
R_{merge}	0.10	Depositor
R_{sym}	(Not available)	Depositor
$\langle I/\sigma(I) \rangle$ ¹	4.37 (at 2.20Å)	Xtriage
Refinement program	REFMAC 5.7.0029	Depositor
R, R_{free}	0.180 , 0.225 0.176 , 0.216	Depositor DCC
R_{free} test set	5527 reflections (5.73%)	DCC
Wilson B-factor (Å ²)	33.3	Xtriage
Anisotropy	0.335	Xtriage
Bulk solvent k_{sol} (e/Å ³), B_{sol} (Å ²)	0.35 , 45.0	EDS
Estimated twinning fraction	No twinning to report.	Xtriage
L-test for twinning ²	$\langle L \rangle = 0.50$, $\langle L^2 \rangle = 0.34$	Xtriage
Outliers	1 of 110381 reflections (0.001%)	Xtriage
F_o, F_c correlation	0.96	EDS
Total number of atoms	15770	wwPDB-VP
Average B, all atoms (Å ²)	36.0	wwPDB-VP

Xtriage's analysis on translational NCS is as follows: *The largest off-origin peak in the Patterson function is 6.32% of the height of the origin peak. No significant pseudotranslation is detected.*

¹Intensities estimated from amplitudes.

²Theoretical values of $\langle |L| \rangle$, $\langle L^2 \rangle$ for acentric reflections are 0.5, 0.375 respectively for untwinned datasets, and 0.333, 0.2 for perfectly twinned datasets.

5 Model quality [i](#)

5.1 Standard geometry [i](#)

Bond lengths and bond angles in the following residue types are not validated in this section: 2VS, NA, NAD

The Z score for a bond length (or angle) is the number of standard deviations the observed value is removed from the expected value. A bond length (or angle) with $|Z| > 5$ is considered an outlier worth inspection. RMSZ is the root-mean-square of all Z scores of the bond lengths (or angles).

Mol	Chain	Bond lengths		Bond angles	
		RMSZ	# Z >5	RMSZ	# Z >5
1	A	0.81	1/3746 (0.0%)	0.71	0/5093
1	B	0.81	0/3746	0.73	1/5093 (0.0%)
1	C	0.75	0/3746	0.69	0/5093
1	D	0.80	0/3746	0.71	0/5093
All	All	0.79	1/14984 (0.0%)	0.71	1/20372 (0.0%)

All (1) bond length outliers are listed below:

Mol	Chain	Res	Type	Atoms	Z	Observed(Å)	Ideal(Å)
1	A	170	LEU	CG-CD1	5.21	1.71	1.51

All (1) bond angle outliers are listed below:

Mol	Chain	Res	Type	Atoms	Z	Observed(°)	Ideal(°)
1	B	46	ILE	CB-CA-C	-5.24	101.11	111.60

There are no chirality outliers.

There are no planarity outliers.

5.2 Too-close contacts [i](#)

In the following table, the Non-H and H(model) columns list the number of non-hydrogen atoms and hydrogen atoms in the chain respectively. The H(added) column lists the number of hydrogen atoms added and optimized by MolProbity. The Clashes column lists the number of clashes within the asymmetric unit, whereas Symm-Clashes lists symmetry related clashes.

Mol	Chain	Non-H	H(model)	H(added)	Clashes	Symm-Clashes
1	A	3667	0	3603	29	0
1	B	3667	0	3603	39	0

Continued on next page...

Continued from previous page...

Mol	Chain	Non-H	H(model)	H(added)	Clashes	Symm-Clashes
1	C	3667	0	3603	49	0
1	D	3667	0	3603	42	0
2	A	44	0	26	4	0
2	B	44	0	25	2	0
2	C	44	0	26	1	0
2	D	44	0	26	4	0
3	A	1	0	0	0	0
3	B	1	0	0	0	0
3	C	1	0	0	0	0
3	D	1	0	0	0	0
4	A	10	0	3	2	0
4	B	10	0	3	0	0
4	C	10	0	3	0	0
4	D	10	0	3	1	0
5	A	253	0	0	1	0
5	B	238	0	0	10	0
5	C	160	0	0	5	0
5	D	231	0	0	14	0
All	All	15770	0	14527	163	0

The all-atom clashscore is defined as the number of clashes found per 1000 atoms (including hydrogen atoms). The all-atom clashscore for this structure is 6.

All (163) close contacts within the same asymmetric unit are listed below, sorted by their clash magnitude.

Atom-1	Atom-2	Interatomic distance (Å)	Clash overlap (Å)
1:B:328:ARG:HG2	1:B:328:ARG:HH11	1.03	1.14
1:A:478:LEU:O	1:A:478:LEU:HD23	1.53	1.08
1:C:366:THR:HB	1:C:392:THR:HG22	1.51	0.93
1:B:280:ASP:OD2	1:B:443:ARG:NH1	2.03	0.91
1:B:328:ARG:HG2	1:B:328:ARG:NH1	1.81	0.90
1:B:366:THR:HB	1:B:392:THR:HG22	1.56	0.88
1:D:280:ASP:OD2	1:D:443:ARG:NH1	2.18	0.76
1:B:478:LEU:HD23	1:B:478:LEU:O	1.85	0.76
1:D:18:SER:HB3	1:D:47:SER:HB3	1.67	0.76
1:D:234:THR:HG21	5:D:854:HOH:O	1.85	0.76
1:D:262:VAL:O	5:D:882:HOH:O	2.05	0.73
1:C:234:THR:HG21	5:C:844:HOH:O	1.90	0.72
2:D:601:NAD:H52N	5:D:828:HOH:O	1.90	0.70
1:C:102:GLU:OE2	1:C:171:PRO:HB2	1.91	0.70
1:A:272:LYS:HG3	1:A:307:ARG:HD2	1.74	0.69

Continued on next page...

Continued from previous page...

Atom-1	Atom-2	Interatomic distance (Å)	Clash overlap (Å)
1:D:491:SER:O	5:D:702:HOH:O	2.11	0.69
1:D:196:GLU:OE2	5:D:927:HOH:O	2.10	0.68
1:D:366:THR:HB	1:D:392:THR:HG22	1.74	0.68
1:B:234:THR:HG21	5:B:812:HOH:O	1.94	0.68
1:D:474:LYS:O	5:D:703:HOH:O	2.14	0.66
1:A:449:ARG:HG2	5:B:826:HOH:O	1.96	0.66
2:A:601:NAD:H6N	2:A:601:NAD:O5D	1.94	0.66
1:C:391:TRP:CH2	1:C:409:VAL:HG21	2.33	0.64
1:C:36:ALA:HB1	1:C:45:LEU:HD13	1.79	0.64
1:B:36:ALA:HB1	1:B:45:LEU:CD1	2.29	0.63
1:A:462:TYR:OH	4:A:603:2VS:H6	1.99	0.62
1:C:330:VAL:HB	1:C:339:VAL:HA	1.83	0.60
1:C:231:GLU:O	1:C:235:GLN:HG3	2.02	0.60
1:A:174:LEU:HD21	4:A:603:2VS:CA4	2.32	0.60
1:C:376:PHE:O	5:C:780:HOH:O	2.15	0.59
1:B:234:THR:HG23	1:B:257:ALA:HB1	1.85	0.59
1:D:59:GLU:OE2	5:D:791:HOH:O	2.17	0.58
1:B:361:VAL:O	5:B:777:HOH:O	2.17	0.58
1:D:151:LEU:HD21	5:D:800:HOH:O	2.04	0.57
1:C:99:VAL:O	1:C:103:VAL:HG23	2.04	0.57
1:B:234:THR:HG23	1:B:257:ALA:CB	2.34	0.56
1:C:303:LEU:HD23	1:C:432:LEU:HD13	1.87	0.56
1:B:247:GLU:OE2	2:B:601:NAD:H4D	2.06	0.56
1:A:478:LEU:C	1:A:478:LEU:HD23	2.25	0.55
1:A:391:TRP:CZ3	1:A:409:VAL:HG21	2.41	0.55
1:D:36:ALA:HB1	1:D:45:LEU:CD1	2.37	0.55
1:B:312:ARG:HG3	1:B:313:SER:N	2.21	0.55
1:C:377:ASN:N	1:C:381:ASP:OD2	2.40	0.54
1:C:37:ASN:O	1:C:45:LEU:HD12	2.08	0.54
2:C:601:NAD:H6N	2:C:601:NAD:C5D	2.38	0.53
1:C:391:TRP:CZ3	1:C:409:VAL:HG21	2.43	0.52
1:B:443:ARG:NE	5:B:808:HOH:O	2.27	0.51
1:D:288:GLU:OE2	1:D:292:ARG:HD3	2.10	0.51
1:C:234:THR:HG23	1:C:257:ALA:HB1	1.93	0.51
1:C:173:LEU:C	1:C:173:LEU:HD23	2.32	0.51
1:A:272:LYS:CG	1:A:307:ARG:HD2	2.39	0.50
1:C:323:LYS:HD2	1:C:368:VAL:CG1	2.41	0.50
1:A:391:TRP:CH2	1:A:409:VAL:HG21	2.46	0.50
1:C:106:THR:OG1	1:C:108:ARG:HD2	2.11	0.50
1:A:167:PRO:HB2	2:A:601:NAD:H4N	1.93	0.50
1:B:328:ARG:HH11	1:B:328:ARG:CG	1.97	0.49

Continued on next page...

Continued from previous page...

Atom-1	Atom-2	Interatomic distance (Å)	Clash overlap (Å)
1:B:474:LYS:O	5:B:702:HOH:O	2.20	0.49
1:C:18:SER:HB3	1:C:47:SER:HB3	1.93	0.49
1:A:274:ALA:HA	1:A:307:ARG:O	2.13	0.49
1:B:106:THR:OG1	1:B:108:ARG:HD2	2.11	0.49
1:B:356:TYR:CG	1:B:405:ILE:HG12	2.47	0.49
1:B:21:LEU:N	1:B:21:LEU:HD12	2.28	0.49
1:C:234:THR:HG23	1:C:257:ALA:CB	2.43	0.49
1:C:323:LYS:HD2	1:C:368:VAL:HG12	1.93	0.49
1:A:272:LYS:HG3	1:A:307:ARG:CD	2.42	0.48
1:D:401:VAL:CG1	1:D:401:VAL:O	2.60	0.48
1:B:18:SER:HB3	5:B:918:HOH:O	2.14	0.48
1:C:271:GLY:HA2	1:C:430:TYR:CD1	2.49	0.48
2:D:601:NAD:H3B	5:D:911:HOH:O	2.14	0.48
1:B:36:ALA:HB1	1:B:45:LEU:HD12	1.95	0.48
1:D:137:THR:HB	1:D:154:THR:OG1	2.14	0.48
1:B:366:THR:HB	1:B:392:THR:CG2	2.38	0.48
1:B:491:SER:O	5:B:703:HOH:O	2.20	0.47
1:C:108:ARG:NH2	1:C:112:GLN:OE1	2.47	0.47
1:C:169:ASN:HB2	1:C:300:GLN:O	2.14	0.47
1:C:262:VAL:O	1:C:262:VAL:HG12	2.13	0.47
1:B:133:LYS:NZ	5:B:778:HOH:O	2.47	0.47
1:D:159:LEU:CD2	1:D:241:ALA:HB2	2.45	0.47
1:A:366:THR:HB	1:A:392:THR:HG22	1.96	0.47
1:B:234:THR:CG2	1:B:257:ALA:HB1	2.44	0.47
1:B:247:GLU:HB2	2:B:601:NAD:O4D	2.13	0.47
1:D:118:ILE:N	1:D:119:PRO:CD	2.77	0.47
1:B:77:VAL:HG11	1:B:132:ALA:O	2.14	0.47
1:A:267:PHE:CD2	1:A:478:LEU:HD22	2.50	0.47
1:D:118:ILE:HB	1:D:119:PRO:HD3	1.97	0.47
1:A:178:LYS:HD3	1:A:243:THR:HG23	1.97	0.47
1:C:307:ARG:HD3	1:C:401:VAL:O	2.15	0.47
1:B:116:LEU:HD22	1:B:116:LEU:C	2.35	0.47
1:D:159:LEU:HD23	1:D:241:ALA:HB2	1.97	0.46
1:D:33:SER:HB3	5:D:807:HOH:O	2.13	0.46
1:D:197:SER:N	1:D:198:PRO:HD3	2.29	0.46
1:D:333:TYR:HB2	1:D:336:GLN:HB2	1.98	0.46
1:D:302:CYS:HB3	2:D:601:NAD:N7N	2.31	0.46
1:A:302:CYS:HB3	2:A:601:NAD:N7N	2.30	0.46
1:C:236:HIS:HA	1:C:237:PRO:HD3	1.82	0.46
1:B:344:LEU:HD23	1:B:350:ARG:HA	1.98	0.46
1:A:468:THR:HB	1:A:469:PRO:HD2	1.97	0.46

Continued on next page...

Continued from previous page...

Atom-1	Atom-2	Interatomic distance (Å)	Clash overlap (Å)
1:C:36:ALA:HB1	1:C:45:LEU:CD1	2.45	0.45
1:B:443:ARG:NH2	5:B:808:HOH:O	2.39	0.45
1:C:344:LEU:HD23	1:C:350:ARG:HA	1.98	0.45
1:C:315:PHE:CE2	1:C:412:ILE:HG22	2.52	0.45
1:A:151:LEU:O	1:A:151:LEU:HD12	2.16	0.45
1:D:267:PHE:CD2	1:D:478:LEU:HD21	2.52	0.45
1:A:246:GLY:O	1:A:269:LEU:HA	2.17	0.45
1:C:159:LEU:CD2	1:C:241:ALA:HB2	2.47	0.45
1:D:178:LYS:HE2	1:D:245:THR:OG1	2.17	0.45
1:D:248:SER:HB3	1:D:269:LEU:HB3	1.98	0.44
1:C:322:LEU:HD23	1:C:412:ILE:HD11	1.98	0.44
1:C:105:ASP:OD2	1:C:199:SER:HB2	2.17	0.44
1:D:231:GLU:O	1:D:234:THR:HG22	2.18	0.44
1:A:488:ASP:O	5:A:879:HOH:O	2.21	0.44
1:D:244:PHE:CZ	1:D:246:GLY:HA3	2.53	0.44
1:D:18:SER:CB	1:D:47:SER:HB3	2.43	0.44
1:A:98:PHE:CZ	1:A:203:LEU:HB3	2.53	0.44
1:A:18:SER:HB3	1:A:47:SER:HB3	2.00	0.44
1:D:96:GLU:OE1	5:D:784:HOH:O	2.21	0.44
1:C:454:GLY:HA3	1:C:471:GLY:O	2.17	0.44
1:D:440:ASN:HB3	1:D:443:ARG:HB3	2.01	0.43
1:D:53:ASP:HB2	5:D:886:HOH:O	2.18	0.43
1:A:262:VAL:HG12	1:A:262:VAL:O	2.17	0.43
1:B:234:THR:CG2	1:B:257:ALA:CB	2.96	0.43
1:D:267:PHE:HB2	1:D:478:LEU:CD2	2.49	0.43
1:B:118:ILE:HB	1:B:119:PRO:HD3	2.00	0.43
1:A:272:LYS:O	1:A:307:ARG:HD3	2.18	0.42
1:C:289:GLY:HA3	1:C:437:TRP:CZ2	2.54	0.42
1:C:174:LEU:HA	1:C:174:LEU:HD23	1.85	0.42
1:B:236:HIS:HA	1:B:237:PRO:HD3	1.80	0.42
1:A:267:PHE:HB2	1:A:478:LEU:HD22	2.01	0.42
1:B:152:ASN:OD1	1:B:497:CYS:HB2	2.20	0.42
1:A:166:SER:HB2	1:A:167:PRO:HD2	2.02	0.42
1:B:478:LEU:HD23	1:B:478:LEU:C	2.40	0.42
1:C:271:GLY:HA2	1:C:430:TYR:CG	2.54	0.42
1:B:98:PHE:CE1	1:B:203:LEU:HB3	2.54	0.42
1:C:178:LYS:HE2	1:C:245:THR:OG1	2.20	0.42
1:C:337:ASP:HB3	1:C:338:GLY:H	1.76	0.42
1:C:350:ARG:NE	5:C:848:HOH:O	2.36	0.41
1:A:292:ARG:NE	1:A:292:ARG:HA	2.35	0.41
1:D:391:TRP:CH2	1:D:409:VAL:HG21	2.55	0.41

Continued on next page...

Continued from previous page...

Atom-1	Atom-2	Interatomic distance (Å)	Clash overlap (Å)
1:D:274:ALA:HA	1:D:307:ARG:O	2.20	0.41
1:D:174:LEU:HD21	4:D:603:2VS:CA4	2.50	0.41
1:D:488:ASP:O	5:D:702:HOH:O	2.22	0.41
1:C:373:VAL:HG23	1:C:374:PRO:O	2.21	0.41
1:D:302:CYS:HB3	2:D:601:NAD:H72N	1.85	0.41
1:D:307:ARG:HD3	1:D:401:VAL:O	2.20	0.41
1:D:133:LYS:HE3	1:D:133:LYS:HB2	1.88	0.41
1:C:87:ILE:HD13	1:C:208:MET:SD	2.61	0.41
1:C:137:THR:HB	1:C:154:THR:OG1	2.21	0.41
1:A:302:CYS:HB3	2:A:601:NAD:H72N	1.86	0.41
1:C:80:ARG:NH2	5:C:843:HOH:O	2.53	0.41
1:B:106:THR:CB	1:B:108:ARG:HH11	2.34	0.41
1:C:286:ALA:O	1:C:290:VAL:HG23	2.20	0.41
1:A:118:ILE:HB	1:A:119:PRO:HD3	2.02	0.41
1:D:224:PHE:HB3	5:D:785:HOH:O	2.20	0.40
1:C:350:ARG:NH2	5:C:848:HOH:O	2.41	0.40
1:B:333:TYR:HB2	1:B:336:GLN:HB2	2.02	0.40
1:C:41:VAL:O	1:C:380:ARG:HA	2.22	0.40
1:C:378:ASP:OD1	1:C:378:ASP:C	2.59	0.40
1:D:401:VAL:O	1:D:401:VAL:HG12	2.21	0.40
1:B:18:SER:CB	5:B:918:HOH:O	2.69	0.40
1:D:86:LYS:HB3	1:D:86:LYS:HE2	1.77	0.40
1:B:303:LEU:HD23	1:B:432:LEU:HD13	2.03	0.40
1:C:116:LEU:CD2	1:C:116:LEU:C	2.90	0.40
1:C:234:THR:CG2	1:C:257:ALA:HB1	2.51	0.40

There are no symmetry-related clashes.

5.3 Torsion angles [i](#)

5.3.1 Protein backbone [i](#)

In the following table, the Percentiles column shows the percent Ramachandran outliers of the chain as a percentile score with respect to all X-ray entries followed by that with respect to entries of similar resolution.

The Analysed column shows the number of residues for which the backbone conformation was analysed, and the total number of residues.

Mol	Chain	Analysed	Favoured	Allowed	Outliers	Percentiles	
1	A	481/483 (100%)	462 (96%)	19 (4%)	0	100	100

Continued on next page...

Continued from previous page...

Mol	Chain	Analysed	Favoured	Allowed	Outliers	Percentiles	
1	B	481/483 (100%)	463 (96%)	18 (4%)	0	100	100
1	C	481/483 (100%)	458 (95%)	21 (4%)	2 (0%)	39	42
1	D	481/483 (100%)	467 (97%)	12 (2%)	2 (0%)	39	42
All	All	1924/1932 (100%)	1850 (96%)	70 (4%)	4 (0%)	52	59

All (4) Ramachandran outliers are listed below:

Mol	Chain	Res	Type
1	C	337	ASP
1	C	171	PRO
1	D	171	PRO
1	D	431	GLY

5.3.2 Protein sidechains ⓘ

In the following table, the Percentiles column shows the percent sidechain outliers of the chain as a percentile score with respect to all X-ray entries followed by that with respect to entries of similar resolution.

The Analysed column shows the number of residues for which the sidechain conformation was analysed, and the total number of residues.

Mol	Chain	Analysed	Rotameric	Outliers	Percentiles	
1	A	391/391 (100%)	378 (97%)	13 (3%)	45	56
1	B	391/391 (100%)	371 (95%)	20 (5%)	29	34
1	C	391/391 (100%)	376 (96%)	15 (4%)	40	49
1	D	391/391 (100%)	382 (98%)	9 (2%)	58	71
All	All	1564/1564 (100%)	1507 (96%)	57 (4%)	42	52

All (57) residues with a non-rotameric sidechain are listed below:

Mol	Chain	Res	Type
1	A	78	GLN
1	A	116	LEU
1	A	131	LEU
1	A	192	LYS
1	A	203	LEU
1	A	226	LYS
1	A	242	LEU

Continued on next page...

Continued from previous page...

Mol	Chain	Res	Type
1	A	328	ARG
1	A	392	THR
1	A	432	LEU
1	A	449	ARG
1	A	463	LEU
1	A	478	LEU
1	B	78	GLN
1	B	108	ARG
1	B	116	LEU
1	B	126	ARG
1	B	131	LEU
1	B	148	SER
1	B	192	LYS
1	B	203	LEU
1	B	234	THR
1	B	242	LEU
1	B	328	ARG
1	B	344	LEU
1	B	355	SER
1	B	375	LYS
1	B	392	THR
1	B	395	SER
1	B	432	LEU
1	B	462	TYR
1	B	463	LEU
1	B	478	LEU
1	C	116	LEU
1	C	126	ARG
1	C	131	LEU
1	C	192	LYS
1	C	234	THR
1	C	242	LEU
1	C	337	ASP
1	C	344	LEU
1	C	392	THR
1	C	397	LYS
1	C	406	PHE
1	C	432	LEU
1	C	442	SER
1	C	462	TYR
1	C	463	LEU
1	D	131	LEU

Continued on next page...

Continued from previous page...

Mol	Chain	Res	Type
1	D	192	LYS
1	D	234	THR
1	D	242	LEU
1	D	375	LYS
1	D	392	THR
1	D	432	LEU
1	D	463	LEU
1	D	478	LEU

Some sidechains can be flipped to improve hydrogen bonding and reduce clashes. All (1) such sidechains are listed below:

Mol	Chain	Res	Type
1	B	222	HIS

5.3.3 RNA [i](#)

There are no RNA molecules in this entry.

5.4 Non-standard residues in protein, DNA, RNA chains [i](#)

There are no non-standard protein/DNA/RNA residues in this entry.

5.5 Carbohydrates [i](#)

There are no carbohydrates in this entry.

5.6 Ligand geometry [i](#)

Of 12 ligands modelled in this entry, 4 are monoatomic - leaving 8 for Mogul analysis.

In the following table, the Counts columns list the number of bonds (or angles) for which Mogul statistics could be retrieved, the number of bonds (or angles) that are observed in the model and the number of bonds (or angles) that are defined in the chemical component dictionary. The Link column lists molecule types, if any, to which the group is linked. The Z score for a bond length (or angle) is the number of standard deviations the observed value is removed from the expected value. A bond length (or angle) with $|Z| > 2$ is considered an outlier worth inspection. RMSZ is the root-mean-square of all Z scores of the bond lengths (or angles).

Mol	Type	Chain	Res	Link	Bond lengths			Bond angles		
					Counts	RMSZ	# Z > 2	Counts	RMSZ	# Z > 2
2	NAD	A	601	-	38,48,48	1.64	5 (13%)	47,73,73	2.71	14 (29%)
4	2VS	A	603	1	5,9,9	1.28	0	4,10,10	3.56	1 (25%)
2	NAD	B	601	-	38,48,48	1.68	5 (13%)	47,73,73	1.93	6 (12%)
4	2VS	B	603	1	5,9,9	1.26	1 (20%)	4,10,10	3.05	3 (75%)
2	NAD	C	601	-	38,48,48	1.58	7 (18%)	47,73,73	2.00	9 (19%)
4	2VS	C	603	1	5,9,9	1.12	0	4,10,10	2.91	2 (50%)
2	NAD	D	601	-	38,48,48	1.63	8 (21%)	47,73,73	1.96	5 (10%)
4	2VS	D	603	1	5,9,9	1.25	0	4,10,10	1.79	1 (25%)

In the following table, the Chirals column lists the number of chiral outliers, the number of chiral centers analysed, the number of these observed in the model and the number defined in the chemical component dictionary. Similar counts are reported in the Torsion and Rings columns. '-' means no outliers of that kind were identified.

Mol	Type	Chain	Res	Link	Chirals	Torsions	Rings
2	NAD	A	601	-	-	0/22/62/62	0/5/5/5
4	2VS	A	603	1	-	0/3/9/9	0/0/0/0
2	NAD	B	601	-	-	0/22/62/62	0/5/5/5
4	2VS	B	603	1	-	0/3/9/9	0/0/0/0
2	NAD	C	601	-	-	0/22/62/62	0/5/5/5
4	2VS	C	603	1	-	0/3/9/9	0/0/0/0
2	NAD	D	601	-	-	0/22/62/62	0/5/5/5
4	2VS	D	603	1	-	0/3/9/9	0/0/0/0

All (26) bond length outliers are listed below:

Mol	Chain	Res	Type	Atoms	Z	Observed(Å)	Ideal(Å)
2	B	601	NAD	O3D-C3D	-2.95	1.35	1.43
2	C	601	NAD	O4B-C4B	-2.63	1.39	1.45
2	A	601	NAD	O2B-C2B	-2.42	1.37	1.43
2	D	601	NAD	O3D-C3D	-2.28	1.37	1.43
2	D	601	NAD	O4D-C4D	-2.27	1.39	1.45
2	C	601	NAD	PA-O5B	-2.23	1.48	1.59
2	C	601	NAD	O2B-C2B	-2.16	1.37	1.43
2	D	601	NAD	C2D-C3D	-2.13	1.47	1.53
2	A	601	NAD	O4D-C1D	2.07	1.43	1.41
2	D	601	NAD	C2N-C3N	2.09	1.42	1.39
2	D	601	NAD	C3N-C7N	2.10	1.53	1.50
2	C	601	NAD	C2A-N3A	2.13	1.36	1.32
4	B	603	2VS	CA5-CA6	2.17	1.50	1.44

Continued on next page...

Continued from previous page...

Mol	Chain	Res	Type	Atoms	Z	Observed(Å)	Ideal(Å)
2	D	601	NAD	C6N-N1N	2.30	1.41	1.35
2	B	601	NAD	C2N-C3N	2.33	1.42	1.39
2	D	601	NAD	C6A-N6A	2.68	1.43	1.34
2	B	601	NAD	C6A-N6A	2.69	1.43	1.34
2	C	601	NAD	PA-O1A	2.76	1.61	1.51
2	C	601	NAD	C6A-N6A	2.98	1.44	1.34
2	A	601	NAD	C6A-N6A	3.08	1.44	1.34
2	A	601	NAD	C2A-N3A	3.23	1.37	1.32
2	B	601	NAD	C2A-N3A	3.98	1.39	1.32
2	C	601	NAD	C7N-N7N	5.01	1.43	1.33
2	D	601	NAD	C7N-N7N	5.52	1.44	1.33
2	A	601	NAD	C7N-N7N	5.80	1.44	1.33
2	B	601	NAD	C7N-N7N	5.94	1.45	1.33

All (41) bond angle outliers are listed below:

Mol	Chain	Res	Type	Atoms	Z	Observed(°)	Ideal(°)
2	A	601	NAD	N3A-C2A-N1A	-9.67	121.49	128.89
2	B	601	NAD	N3A-C2A-N1A	-9.38	121.71	128.89
2	C	601	NAD	N3A-C2A-N1A	-9.27	121.80	128.89
2	D	601	NAD	N3A-C2A-N1A	-8.98	122.02	128.89
4	A	603	2VS	OA4-CA6-CA5	-6.77	108.21	125.51
2	A	601	NAD	PN-O3-PA	-5.68	116.78	132.73
2	A	601	NAD	O2A-PA-O1A	-5.28	83.93	112.53
2	A	601	NAD	O5B-PA-O1A	-5.08	89.90	109.62
4	C	603	2VS	OA4-CA6-CA5	-4.72	113.44	125.51
2	C	601	NAD	C4A-C5A-N7A	-3.90	105.89	109.48
2	D	601	NAD	PN-O3-PA	-3.83	121.96	132.73
2	B	601	NAD	C4A-C5A-N7A	-3.83	105.96	109.48
4	B	603	2VS	OA4-CA6-CA5	-3.72	116.01	125.51
4	B	603	2VS	CA5-CA4-CA3	-3.71	115.18	123.39
2	A	601	NAD	C3N-C2N-N1N	-3.29	116.57	120.36
2	C	601	NAD	O5B-PA-O1A	-3.26	96.97	109.62
4	D	603	2VS	OA4-CA6-CA5	-3.15	117.46	125.51
2	B	601	NAD	O7N-C7N-N7N	-3.07	118.27	122.59
2	A	601	NAD	O7N-C7N-N7N	-3.06	118.29	122.59
4	C	603	2VS	CA4-CA5-CA6	-2.92	118.44	121.45
4	B	603	2VS	CA4-CA5-CA6	-2.91	118.45	121.45
2	C	601	NAD	PN-O3-PA	-2.83	124.79	132.73
2	D	601	NAD	C4A-C5A-N7A	-2.68	107.02	109.48
2	A	601	NAD	C4A-C5A-N7A	-2.19	107.47	109.48
2	A	601	NAD	C6N-C5N-C4N	-2.07	116.32	119.44

Continued on next page...

Continued from previous page...

Mol	Chain	Res	Type	Atoms	Z	Observed(°)	Ideal(°)
2	D	601	NAD	O3-PA-O5B	2.07	108.43	102.94
2	C	601	NAD	C2D-C3D-C4D	2.22	107.18	102.61
2	B	601	NAD	O7N-C7N-C3N	2.30	122.10	119.59
2	C	601	NAD	C4B-O4B-C1B	2.39	112.34	109.72
2	C	601	NAD	O3-PN-O5D	2.44	109.40	102.94
2	A	601	NAD	O3-PN-O5D	2.70	110.11	102.94
2	A	601	NAD	C5N-C4N-C3N	2.89	123.97	120.33
2	B	601	NAD	O3-PA-O5B	2.99	110.86	102.94
2	C	601	NAD	O2A-PA-O3	3.00	118.69	105.09
2	C	601	NAD	O4D-C1D-N1N	3.04	111.47	108.13
2	A	601	NAD	O2A-PA-O3	3.16	119.41	105.09
2	A	601	NAD	C3N-C7N-N7N	3.24	121.36	117.82
2	B	601	NAD	O4D-C1D-N1N	3.95	112.48	108.13
2	A	601	NAD	O4D-C1D-N1N	4.25	112.80	108.13
2	D	601	NAD	O4D-C1D-N1N	6.12	114.85	108.13
2	A	601	NAD	O3-PA-O5B	7.74	123.47	102.94

There are no chirality outliers.

There are no torsion outliers.

There are no ring outliers.

6 monomers are involved in 14 short contacts:

Mol	Chain	Res	Type	Clashes	Symm-Clashes
2	A	601	NAD	4	0
4	A	603	2VS	2	0
2	B	601	NAD	2	0
2	C	601	NAD	1	0
2	D	601	NAD	4	0
4	D	603	2VS	1	0

5.7 Other polymers [i](#)

There are no such residues in this entry.

5.8 Polymer linkage issues [i](#)

There are no chain breaks in this entry.

6 Fit of model and data ⓘ

6.1 Protein, DNA and RNA chains ⓘ

In the following table, the column labelled ‘#RSRZ> 2’ contains the number (and percentage) of RSRZ outliers, followed by percent RSRZ outliers for the chain as percentile scores relative to all X-ray entries and entries of similar resolution. The OWAB column contains the minimum, median, 95th percentile and maximum values of the occupancy-weighted average B-factor per residue. The column labelled ‘Q< 0.9’ lists the number of (and percentage) of residues with an average occupancy less than 0.9.

Mol	Chain	Analysed	<RSRZ>	#RSRZ>2	OWAB(Å ²)	Q<0.9
1	A	483/483 (100%)	-0.24	1 (0%) 95 95	22, 33, 44, 58	0
1	B	483/483 (100%)	-0.15	7 (1%) 78 77	24, 34, 44, 67	0
1	C	483/483 (100%)	0.06	15 (3%) 52 51	24, 41, 58, 77	0
1	D	483/483 (100%)	-0.22	3 (0%) 90 90	24, 33, 45, 57	0
All	All	1932/1932 (100%)	-0.14	26 (1%) 79 78	22, 34, 51, 77	0

All (26) RSRZ outliers are listed below:

Mol	Chain	Res	Type	RSRZ
1	B	18	SER	6.4
1	C	45	LEU	3.8
1	C	382	GLN	3.5
1	C	44	LYS	3.2
1	C	337	ASP	3.1
1	A	170	LEU	3.0
1	D	170	LEU	3.0
1	C	376	PHE	2.9
1	B	170	LEU	2.8
1	C	377	ASN	2.8
1	C	48	ASP	2.8
1	B	361	VAL	2.7
1	B	174	LEU	2.7
1	C	303	LEU	2.7
1	C	393	GLY	2.5
1	C	301	VAL	2.4
1	C	358	ARG	2.4
1	C	18	SER	2.3
1	B	359	LEU	2.2
1	B	245	THR	2.2
1	D	301	VAL	2.2

Continued on next page...

Continued from previous page...

Mol	Chain	Res	Type	RSRZ
1	C	333	TYR	2.1
1	D	30	THR	2.1
1	B	268	ALA	2.1
1	C	49	VAL	2.1
1	C	50	PHE	2.0

6.2 Non-standard residues in protein, DNA, RNA chains [i](#)

There are no non-standard protein/DNA/RNA residues in this entry.

6.3 Carbohydrates [i](#)

There are no carbohydrates in this entry.

6.4 Ligands [i](#)

In the following table, the Atoms column lists the number of modelled atoms in the group and the number defined in the chemical component dictionary. LLDF column lists the quality of electron density of the group with respect to its neighbouring residues in protein, DNA or RNA chains. The B-factors column lists the minimum, median, 95th percentile and maximum values of B factors of atoms in the group. The column labelled 'Q < 0.9' lists the number of atoms with occupancy less than 0.9.

Mol	Type	Chain	Res	Atoms	RSCC	RSR	LLDF	B-factors(Å ²)	Q<0.9
3	NA	D	602	1/1	0.79	0.25	7.02	48,48,48,48	0
2	NAD	D	601	44/44	0.84	0.22	2.83	37,57,73,83	0
2	NAD	C	601	44/44	0.87	0.17	1.41	48,62,80,86	0
2	NAD	A	601	44/44	0.89	0.17	1.07	35,54,71,76	0
3	NA	B	602	1/1	0.99	0.11	0.57	40,40,40,40	0
3	NA	C	602	1/1	0.91	0.15	0.53	48,48,48,48	0
2	NAD	B	601	44/44	0.93	0.14	-0.12	34,51,66,74	0
4	2VS	D	603	10/10	0.92	0.15	-0.47	24,28,29,30	0
4	2VS	A	603	10/10	0.92	0.13	-0.89	25,26,29,29	0
4	2VS	C	603	10/10	0.89	0.14	-0.89	24,28,32,32	0
4	2VS	B	603	10/10	0.91	0.14	-0.92	25,27,31,32	0
3	NA	A	602	1/1	0.98	0.07	-1.90	38,38,38,38	0

6.5 Other polymers [i](#)

There are no such residues in this entry.