



Full wwPDB X-ray Structure Validation Report ⓘ

Feb 1, 2016 – 11:25 AM GMT

PDB ID : 3OY3
Title : Crystal structure of ABL T315I mutant kinase domain bound with a DFG-out inhibitor AP24589
Authors : Zhou, T.; Commodore, L.; Huang, W.S.; Wang, Y.; Thomas, M.; Keats, J.; Xu, Q.; Rivera, V.; Shakespeare, W.C.; Clackson, T.; Dalgarno, D.C.; Zhu, X.
Deposited on : 2010-09-22
Resolution : 1.95 Å(reported)

This is a Full wwPDB X-ray Structure Validation Report for a publicly released PDB entry.
We welcome your comments at validation@mail.wwpdb.org
A user guide is available at
<http://wwpdb.org/validation/2016/XrayValidationReportHelp>
with specific help available everywhere you see the ⓘ symbol.

The following versions of software and data (see [references ⓘ](#)) were used in the production of this report:

MolProbity : 4.02b-467
Mogul : 1.7 (RC4), CSD as536be (2015)
Xtriage (Phenix) : 1.9-1692
EDS : rb-20026688
Percentile statistics : 20151230.v01 (using entries in the PDB archive December 30th 2015)
Refmac : 5.8.0135
CCP4 : 6.5.0
Ideal geometry (proteins) : Engh & Huber (2001)
Ideal geometry (DNA, RNA) : Parkinson et al. (1996)
Validation Pipeline (wwPDB-VP) : trunk26865

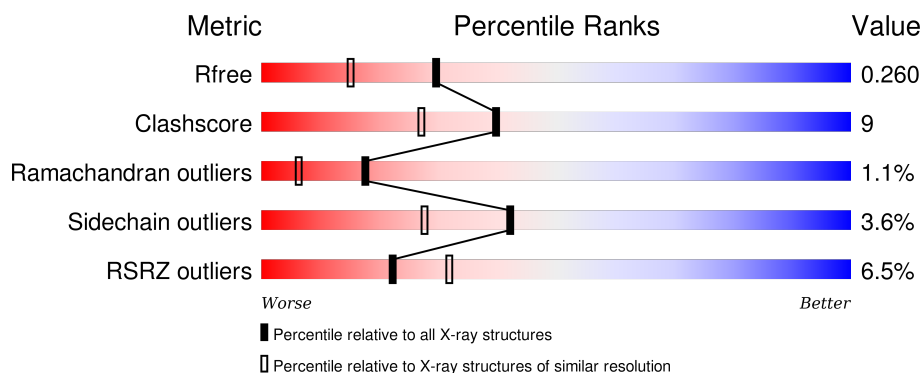
1 Overall quality at a glance

The following experimental techniques were used to determine the structure:

X-RAY DIFFRACTION

The reported resolution of this entry is 1.95 Å.

Percentile scores (ranging between 0-100) for global validation metrics of the entry are shown in the following graphic. The table shows the number of entries on which the scores are based.



Metric	Whole archive (#Entries)	Similar resolution (#Entries, resolution range(Å))
R_{free}	91344	1833 (1.96-1.96)
Clashscore	102246	1953 (1.96-1.96)
Ramachandran outliers	100387	1936 (1.96-1.96)
Sidechain outliers	100360	1936 (1.96-1.96)
RSRZ outliers	91569	1835 (1.96-1.96)

The table below summarises the geometric issues observed across the polymeric chains and their fit to the electron density. The red, orange, yellow and green segments on the lower bar indicate the fraction of residues that contain outliers for ≥ 3 , 2, 1 and 0 types of geometric quality criteria. A grey segment represents the fraction of residues that are not modelled. The numeric value for each fraction is indicated below the corresponding segment, with a dot representing fractions $\leq 5\%$. The upper red bar (where present) indicates the fraction of residues that have poor fit to the electron density. The numeric value is given above the bar.

Mol	Chain	Length	Quality of chain
1	A	284	<div> <div>5%</div> <div>86%</div> <div>12%</div> </div>
1	B	284	<div> <div>8%</div> <div>77%</div> <div>20%</div> </div>

2 Entry composition [i](#)

There are 3 unique types of molecules in this entry. The entry contains 5073 atoms, of which 0 are hydrogens and 0 are deuteriums.

In the tables below, the ZeroOcc column contains the number of atoms modelled with zero occupancy, the AltConf column contains the number of residues with at least one atom in alternate conformation and the Trace column contains the number of residues modelled with at most 2 atoms.

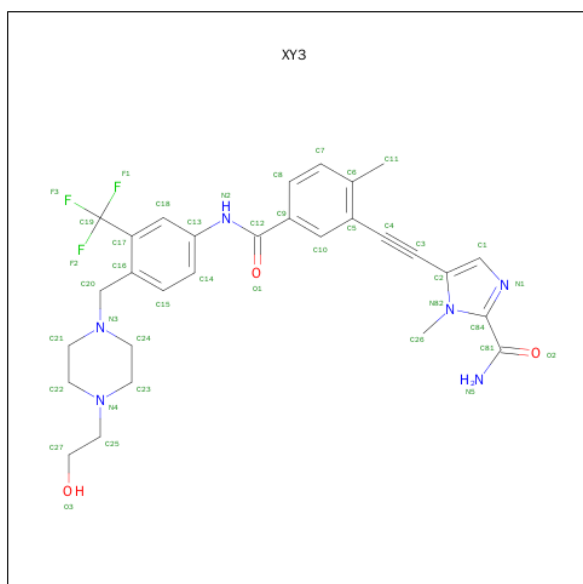
- Molecule 1 is a protein called Tyrosine-protein kinase ABL1.

Mol	Chain	Residues	Atoms					ZeroOcc	AltConf	Trace
1	A	284	Total	C	N	O	S	0	0	0
			2300	1477	372	434	17			
1	B	284	Total	C	N	O	S	0	0	0
			2300	1477	372	434	17			

There are 4 discrepancies between the modelled and reference sequences:

Chain	Residue	Modelled	Actual	Comment	Reference
A	228	GLY	-	EXPRESSION TAG	UNP P00520
A	315	ILE	THR	ENGINEERED MUTATION	UNP P00520
B	228	GLY	-	EXPRESSION TAG	UNP P00520
B	315	ILE	THR	ENGINEERED MUTATION	UNP P00520

- Molecule 2 is 5-[(5-{[4-{[4-(2-HYDROXYETHYL)PIPERAZIN-1-YL]METHYL}-3-(TRIFLUOROMETHYL)PHENYL]CARBAMOYL}-2-METHYLPHENYL)ETHYNYL]-1-METHYL-1H-IMIDAZOLE-2-CARBOXAMIDE (three-letter code: XY3) (formula: C₂₉H₃₁F₃N₆O₃).



Mol	Chain	Residues	Atoms					ZeroOcc	AltConf
2	A	1	Total 41	C 29	F 3	N 6	O 3	0	0
2	B	1	Total 41	C 29	F 3	N 6	O 3	0	0

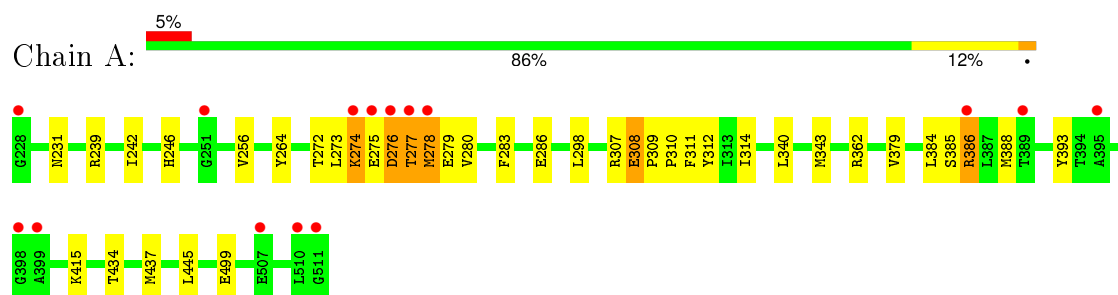
- Molecule 3 is water.

Mol	Chain	Residues	Atoms		ZeroOcc	AltConf
3	A	238	Total 238	O 238	0	0
3	B	153	Total 153	O 153	0	0

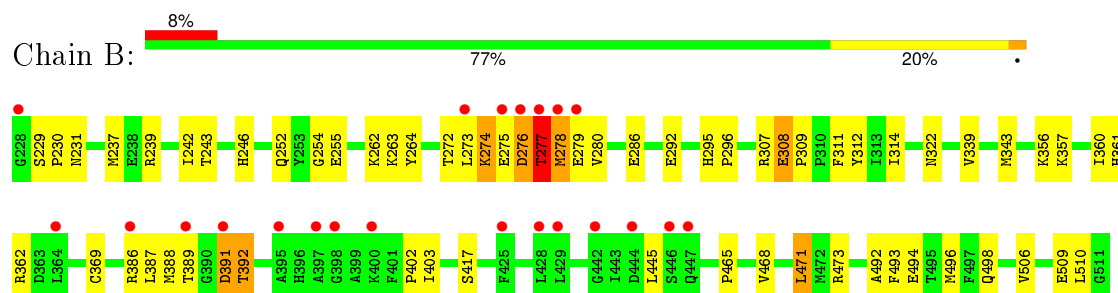
3 Residue-property plots [i](#)

These plots are drawn for all protein, RNA and DNA chains in the entry. The first graphic for a chain summarises the proportions of errors displayed in the second graphic. The second graphic shows the sequence view annotated by issues in geometry and electron density. Residues are color-coded according to the number of geometric quality criteria for which they contain at least one outlier: green = 0, yellow = 1, orange = 2 and red = 3 or more. A red dot above a residue indicates a poor fit to the electron density ($\text{RSRZ} > 2$). Stretches of 2 or more consecutive residues without any outlier are shown as a green connector. Residues present in the sample, but not in the model, are shown in grey.

• Molecule 1: Tyrosine-protein kinase ABL1



• Molecule 1: Tyrosine-protein kinase ABL1



4 Data and refinement statistics

Property	Value	Source
Space group	P 1 21 1	Depositor
Cell constants a, b, c, α , β , γ	66.47Å 59.99Å 89.44Å 90.00° 97.97° 90.00°	Depositor
Resolution (Å)	50.00 – 1.95 29.54 – 1.93	Depositor EDS
% Data completeness (in resolution range)	90.6 (50.00-1.95) 89.5 (29.54-1.93)	Depositor EDS
R_{merge}	(Not available)	Depositor
R_{sym}	(Not available)	Depositor
$\langle I/\sigma(I) \rangle$ ¹	3.59 (at 1.93Å)	Xtriage
Refinement program	CNS	Depositor
R, R_{free}	0.220 , 0.266 0.216 , 0.260	Depositor DCC
R_{free} test set	2532 reflections (5.76%)	DCC
Wilson B-factor (Å ²)	18.7	Xtriage
Anisotropy	0.740	Xtriage
Bulk solvent k_{sol} (e/Å ³), B_{sol} (Å ²)	0.38 , 56.5	EDS
Estimated twinning fraction	No twinning to report.	Xtriage
L-test for twinning ²	$\langle L \rangle = 0.49$, $\langle L^2 \rangle = 0.32$	Xtriage
Outliers	1 of 51576 reflections (0.002%)	Xtriage
F_o, F_c correlation	0.95	EDS
Total number of atoms	5073	wwPDB-VP
Average B, all atoms (Å ²)	27.0	wwPDB-VP

Xtriage's analysis on translational NCS is as follows: *The analyses of the Patterson function reveals a significant off-origin peak that is 79.55 % of the origin peak, indicating pseudo translational symmetry. The chance of finding a peak of this or larger height randomly in a structure without pseudo translational symmetry is equal to 5.4421e-07. The detected translational NCS is most likely also responsible for the elevated intensity ratio.*

¹ Intensities estimated from amplitudes.

² Theoretical values of $\langle |L| \rangle$, $\langle L^2 \rangle$ for acentric reflections are 0.5, 0.375 respectively for untwinned datasets, and 0.333, 0.2 for perfectly twinned datasets.

5 Model quality

5.1 Standard geometry

Bond lengths and bond angles in the following residue types are not validated in this section: XY3

The Z score for a bond length (or angle) is the number of standard deviations the observed value is removed from the expected value. A bond length (or angle) with $|Z| > 5$ is considered an outlier worth inspection. RMSZ is the root-mean-square of all Z scores of the bond lengths (or angles).

Mol	Chain	Bond lengths		Bond angles	
		RMSZ	# Z >5	RMSZ	# Z >5
1	A	0.65	0/2358	0.68	0/3190
1	B	0.52	0/2358	0.60	0/3190
All	All	0.59	0/4716	0.64	0/6380

There are no bond length outliers.

There are no bond angle outliers.

There are no chirality outliers.

There are no planarity outliers.

5.2 Too-close contacts

In the following table, the Non-H and H(model) columns list the number of non-hydrogen atoms and hydrogen atoms in the chain respectively. The H(added) column lists the number of hydrogen atoms added and optimized by MolProbity. The Clashes column lists the number of clashes within the asymmetric unit, whereas Symm-Clashes lists symmetry related clashes.

Mol	Chain	Non-H	H(model)	H(added)	Clashes	Symm-Clashes
1	A	2300	0	2239	36	0
1	B	2300	0	2239	46	0
2	A	41	0	25	1	0
2	B	41	0	25	1	0
3	A	238	0	0	3	0
3	B	153	0	0	1	0
All	All	5073	0	4528	81	0

The all-atom clashscore is defined as the number of clashes found per 1000 atoms (including hydrogen atoms). The all-atom clashscore for this structure is 9.

All (81) close contacts within the same asymmetric unit are listed below, sorted by their clash

magnitude.

Atom-1	Atom-2	Interatomic distance (Å)	Clash overlap (Å)
1:B:494:GLU:O	1:B:498:GLN:HG2	1.74	0.86
1:A:275:GLU:HB2	1:A:276:ASP:CA	2.07	0.84
1:B:273:LEU:HD11	1:B:279:GLU:HB2	1.60	0.82
1:A:415:LYS:HE2	3:A:68:HOH:O	1.79	0.80
1:A:275:GLU:HB2	1:A:276:ASP:CG	2.04	0.78
1:A:275:GLU:HB2	1:A:276:ASP:HA	1.66	0.77
1:A:242:ILE:HD11	1:A:314:ILE:HD13	1.68	0.76
1:B:277:THR:HG22	1:B:280:VAL:HG21	1.69	0.74
1:B:280:VAL:HG13	1:B:311:PHE:HE1	1.52	0.74
1:B:273:LEU:O	1:B:274:LYS:HB2	1.88	0.73
1:B:339:VAL:O	1:B:343:MET:HG3	1.89	0.72
1:A:275:GLU:HB2	1:A:276:ASP:CB	2.20	0.71
1:B:388:MET:CE	1:B:392:THR:HG21	2.20	0.71
1:B:471:LEU:HD22	1:B:493:PHE:CE2	2.26	0.70
1:B:471:LEU:HD22	1:B:493:PHE:HE2	1.56	0.70
1:B:465:PRO:HG2	1:B:468:VAL:CG2	2.22	0.69
1:B:360:ILE:HD13	1:B:417:SER:HA	1.74	0.69
1:B:252:GLN:OE1	1:B:389:THR:HG22	1.94	0.68
1:B:255:GLU:HB3	1:B:272:THR:HG22	1.77	0.67
1:A:273:LEU:HD11	1:A:279:GLU:HB2	1.76	0.66
1:B:307:ARG:C	1:B:308:GLU:HG3	2.17	0.65
1:A:274:LYS:HA	1:A:310:PRO:HB3	1.79	0.64
1:A:280:VAL:HG13	1:A:311:PHE:HE1	1.62	0.64
1:B:277:THR:HG22	1:B:280:VAL:CG2	2.29	0.61
1:A:298:LEU:HD23	1:A:379:VAL:HB	1.82	0.61
1:A:384:LEU:HB3	1:A:388:MET:HG3	1.83	0.61
1:A:275:GLU:CB	1:A:276:ASP:HA	2.31	0.61
1:B:388:MET:HE2	1:B:392:THR:HG21	1.83	0.59
1:A:273:LEU:HD11	1:A:279:GLU:CB	2.34	0.58
1:B:277:THR:O	1:B:278:MET:HB2	2.03	0.57
1:B:242:ILE:HD11	1:B:314:ILE:HD13	1.87	0.57
1:B:252:GLN:HE22	1:B:389:THR:H	1.53	0.57
1:B:465:PRO:HG2	1:B:468:VAL:HG23	1.88	0.56
1:A:286:GLU:HG3	2:A:1:XY3:H14	1.88	0.55
1:B:403:ILE:HB	1:B:445:LEU:HD22	1.89	0.55
1:A:239:ARG:HG2	1:A:312:TYR:CE1	2.42	0.54
1:B:492:ALA:O	1:B:496:MET:HG3	2.08	0.54
1:B:273:LEU:O	1:B:274:LYS:CB	2.55	0.53
1:A:277:THR:O	1:A:278:MET:HB2	2.09	0.53
1:B:465:PRO:HG2	1:B:468:VAL:HG21	1.91	0.52
1:B:360:ILE:CD1	1:B:417:SER:HA	2.39	0.52

Continued on next page...

Continued from previous page...

Atom-1	Atom-2	Interatomic distance (Å)	Clash overlap (Å)
1:B:239:ARG:HG3	1:B:312:TYR:CE1	2.44	0.52
1:A:385:SER:HA	1:A:393:TYR:CD2	2.45	0.52
1:A:445:LEU:HD12	1:A:445:LEU:N	2.24	0.51
1:A:272:THR:HG22	1:A:312:TYR:CD2	2.47	0.50
1:B:295:HIS:CG	1:B:296:PRO:HD2	2.46	0.50
1:A:264:TYR:CZ	1:B:509:GLU:HG2	2.47	0.49
1:B:275:GLU:O	1:B:277:THR:N	2.46	0.49
1:B:275:GLU:HG3	1:B:309:PRO:HB2	1.94	0.48
1:A:242:ILE:CD1	1:A:314:ILE:HD13	2.41	0.48
1:A:445:LEU:CD1	1:A:445:LEU:H	2.26	0.48
1:A:307:ARG:C	1:A:308:GLU:HG3	2.34	0.48
1:A:274:LYS:HB2	3:A:209:HOH:O	2.12	0.48
1:A:283:PHE:CE2	1:A:311:PHE:HB3	2.49	0.47
1:B:391:ASP:OD1	1:B:391:ASP:N	2.48	0.47
1:B:361:HIS:O	1:B:362:ARG:HB2	2.14	0.46
1:B:254:GLY:CA	1:B:387:LEU:HD13	2.46	0.46
1:B:254:GLY:HA3	1:B:387:LEU:HD13	1.97	0.46
1:B:392:THR:O	1:B:402:PRO:HA	2.16	0.46
1:B:246:HIS:H	1:B:246:HIS:CD2	2.34	0.46
1:A:340:LEU:HA	1:A:343:MET:HE2	1.98	0.46
1:A:386:ARG:HG2	1:A:386:ARG:H	1.38	0.45
1:B:243:THR:OG1	1:B:262:LYS:HD2	2.16	0.45
1:B:388:MET:HE1	1:B:392:THR:HG21	1.96	0.45
1:A:256:VAL:HG23	1:A:256:VAL:O	2.18	0.44
1:B:286:GLU:HG3	2:B:1:XY3:H14	2.00	0.44
1:A:445:LEU:HD12	1:A:445:LEU:H	1.83	0.44
1:B:263:LYS:HE2	1:B:264:TYR:CZ	2.52	0.44
1:A:434:THR:HB	1:A:437:MET:HG3	1.99	0.43
1:B:292:GLU:HB3	3:B:128:HOH:O	2.18	0.43
1:B:506:VAL:O	1:B:510:LEU:HG	2.19	0.42
1:A:242:ILE:CD1	1:A:314:ILE:CD1	2.96	0.42
1:A:275:GLU:HA	1:A:309:PRO:HB3	2.01	0.42
1:B:237:MET:SD	1:B:314:ILE:CD1	3.08	0.42
1:A:273:LEU:O	1:A:274:LYS:HB3	2.20	0.41
1:A:386:ARG:NH2	3:A:170:HOH:O	2.53	0.41
1:A:246:HIS:CD2	1:A:246:HIS:H	2.37	0.41
1:B:229:SER:HA	1:B:230:PRO:HD3	1.90	0.41
1:B:237:MET:SD	1:B:314:ILE:HD13	2.61	0.41
1:B:322:ASN:HA	1:B:369:CYS:O	2.20	0.40
1:A:445:LEU:CD1	1:A:445:LEU:N	2.82	0.40

There are no symmetry-related clashes.

5.3 Torsion angles [i](#)

5.3.1 Protein backbone [i](#)

In the following table, the Percentiles column shows the percent Ramachandran outliers of the chain as a percentile score with respect to all X-ray entries followed by that with respect to entries of similar resolution.

The Analysed column shows the number of residues for which the backbone conformation was analysed, and the total number of residues.

Mol	Chain	Analysed	Favoured	Allowed	Outliers	Percentiles	
1	A	282/284 (99%)	267 (95%)	12 (4%)	3 (1%)	17	6
1	B	282/284 (99%)	269 (95%)	10 (4%)	3 (1%)	17	6
All	All	564/568 (99%)	536 (95%)	22 (4%)	6 (1%)	17	6

All (6) Ramachandran outliers are listed below:

Mol	Chain	Res	Type
1	B	276	ASP
1	B	277	THR
1	A	277	THR
1	A	278	MET
1	B	274	LYS
1	A	274	LYS

5.3.2 Protein sidechains [i](#)

In the following table, the Percentiles column shows the percent sidechain outliers of the chain as a percentile score with respect to all X-ray entries followed by that with respect to entries of similar resolution.

The Analysed column shows the number of residues for which the sidechain conformation was analysed, and the total number of residues.

Mol	Chain	Analysed	Rotameric	Outliers	Percentiles	
1	A	247/248 (100%)	241 (98%)	6 (2%)	57	47
1	B	247/248 (100%)	235 (95%)	12 (5%)	31	15
All	All	494/496 (100%)	476 (96%)	18 (4%)	42	28

All (18) residues with a non-rotameric sidechain are listed below:

Mol	Chain	Res	Type
1	A	231	ASN
1	A	276	ASP
1	A	308	GLU
1	A	362	ARG
1	A	386	ARG
1	A	499	GLU
1	B	231	ASN
1	B	276	ASP
1	B	277	THR
1	B	278	MET
1	B	308	GLU
1	B	356	LYS
1	B	357	LYS
1	B	386	ARG
1	B	391	ASP
1	B	392	THR
1	B	471	LEU
1	B	473	ARG

Some sidechains can be flipped to improve hydrogen bonding and reduce clashes. All (9) such sidechains are listed below:

Mol	Chain	Res	Type
1	A	246	HIS
1	A	396	HIS
1	A	414	ASN
1	A	490	HIS
1	A	491	GLN
1	B	246	HIS
1	B	396	HIS
1	B	447	GLN
1	B	490	HIS

5.3.3 RNA ⓘ

There are no RNA molecules in this entry.

5.4 Non-standard residues in protein, DNA, RNA chains ⓘ

There are no non-standard protein/DNA/RNA residues in this entry.

5.5 Carbohydrates [i](#)

There are no carbohydrates in this entry.

5.6 Ligand geometry [i](#)

2 ligands are modelled in this entry.

In the following table, the Counts columns list the number of bonds (or angles) for which Mogul statistics could be retrieved, the number of bonds (or angles) that are observed in the model and the number of bonds (or angles) that are defined in the chemical component dictionary. The Link column lists molecule types, if any, to which the group is linked. The Z score for a bond length (or angle) is the number of standard deviations the observed value is removed from the expected value. A bond length (or angle) with $|Z| > 2$ is considered an outlier worth inspection. RMSZ is the root-mean-square of all Z scores of the bond lengths (or angles).

Mol	Type	Chain	Res	Link	Bond lengths			Bond angles		
					Counts	RMSZ	# Z > 2	Counts	RMSZ	# Z > 2
2	XY3	A	1	-	42,44,44	4.02	19 (45%)	57,63,63	1.04	3 (5%)
2	XY3	B	1	-	42,44,44	4.08	17 (40%)	57,63,63	1.06	3 (5%)

In the following table, the Chirals column lists the number of chiral outliers, the number of chiral centers analysed, the number of these observed in the model and the number defined in the chemical component dictionary. Similar counts are reported in the Torsion and Rings columns. '-' means no outliers of that kind were identified.

Mol	Type	Chain	Res	Link	Chirals	Torsions	Rings
2	XY3	A	1	-	-	0/23/40/40	0/4/4/4
2	XY3	B	1	-	-	0/23/40/40	0/4/4/4

All (36) bond length outliers are listed below:

Mol	Chain	Res	Type	Atoms	Z	Observed(Å)	Ideal(Å)
2	B	1	XY3	C84-C81	-17.91	1.44	1.53
2	A	1	XY3	C84-C81	-17.31	1.45	1.53
2	B	1	XY3	C81-N5	-10.63	1.11	1.33
2	A	1	XY3	C81-N5	-10.56	1.11	1.33
2	B	1	XY3	C25-C27	-8.94	1.12	1.51
2	A	1	XY3	C25-C27	-8.40	1.15	1.51
2	A	1	XY3	C26-N82	-4.24	1.38	1.48
2	B	1	XY3	C26-N82	-4.16	1.38	1.48
2	A	1	XY3	C2-C3	-2.97	1.38	1.44
2	A	1	XY3	C20-N3	-2.01	1.43	1.47
2	A	1	XY3	C14-C13	2.00	1.42	1.39

Continued on next page...

Continued from previous page...

Mol	Chain	Res	Type	Atoms	Z	Observed(Å)	Ideal(Å)
2	B	1	XY3	C14-C13	2.04	1.42	1.39
2	B	1	XY3	C18-C17	2.08	1.42	1.39
2	B	1	XY3	O3-C27	2.09	1.53	1.42
2	A	1	XY3	C5-C6	2.11	1.44	1.39
2	B	1	XY3	C15-C14	2.15	1.42	1.38
2	B	1	XY3	C19-C17	2.27	1.55	1.50
2	A	1	XY3	C20-C16	2.29	1.55	1.51
2	B	1	XY3	C10-C5	2.46	1.43	1.39
2	A	1	XY3	C10-C9	2.52	1.43	1.39
2	A	1	XY3	O3-C27	2.54	1.55	1.42
2	B	1	XY3	C8-C9	2.82	1.44	1.39
2	A	1	XY3	C15-C14	2.87	1.43	1.38
2	B	1	XY3	C15-C16	2.97	1.44	1.39
2	A	1	XY3	C18-C17	3.01	1.44	1.39
2	A	1	XY3	C8-C7	3.02	1.44	1.38
2	A	1	XY3	C16-C17	3.18	1.44	1.40
2	A	1	XY3	C15-C16	3.26	1.45	1.39
2	B	1	XY3	C10-C9	3.34	1.44	1.39
2	B	1	XY3	C18-C13	3.53	1.45	1.39
2	B	1	XY3	C8-C7	3.58	1.45	1.38
2	A	1	XY3	C18-C13	3.71	1.45	1.39
2	A	1	XY3	C8-C9	3.82	1.45	1.39
2	B	1	XY3	C16-C17	4.74	1.46	1.40
2	A	1	XY3	O2-C81	6.34	1.37	1.24
2	B	1	XY3	O2-C81	6.37	1.37	1.24

All (6) bond angle outliers are listed below:

Mol	Chain	Res	Type	Atoms	Z	Observed(°)	Ideal(°)
2	B	1	XY3	F1-C19-C17	-2.15	108.90	112.68
2	A	1	XY3	F1-C19-C17	-2.03	109.11	112.68
2	A	1	XY3	C26-N82-C84	2.40	130.12	126.24
2	B	1	XY3	C1-C2-N82	3.52	109.46	104.29
2	B	1	XY3	C19-C17-C16	3.55	123.95	120.92
2	A	1	XY3	C1-C2-N82	3.69	109.70	104.29

There are no chirality outliers.

There are no torsion outliers.

There are no ring outliers.

2 monomers are involved in 2 short contacts:

Mol	Chain	Res	Type	Clashes	Symm-Clashes
2	A	1	XY3	1	0
2	B	1	XY3	1	0

5.7 Other polymers [i](#)

There are no such residues in this entry.

5.8 Polymer linkage issues [i](#)

There are no chain breaks in this entry.

6 Fit of model and data ⓘ

6.1 Protein, DNA and RNA chains ⓘ

In the following table, the column labelled ‘#RSRZ> 2’ contains the number (and percentage) of RSRZ outliers, followed by percent RSRZ outliers for the chain as percentile scores relative to all X-ray entries and entries of similar resolution. The OWAB column contains the minimum, median, 95th percentile and maximum values of the occupancy-weighted average B-factor per residue. The column labelled ‘Q< 0.9’ lists the number of (and percentage) of residues with an average occupancy less than 0.9.

Mol	Chain	Analysed	<RSRZ>	#RSRZ>2		OWAB(Å ²)	Q<0.9
1	A	284/284 (100%)	0.21	15 (5%)	30 41	8, 19, 46, 70	0
1	B	284/284 (100%)	0.41	22 (7%)	16 25	17, 29, 50, 69	0
All	All	568/568 (100%)	0.31	37 (6%)	22 32	8, 25, 48, 70	0

All (37) RSRZ outliers are listed below:

Mol	Chain	Res	Type	RSRZ
1	A	276	ASP	6.7
1	B	277	THR	6.1
1	A	277	THR	6.1
1	B	278	MET	6.0
1	A	228	GLY	5.8
1	B	276	ASP	5.7
1	A	275	GLU	4.4
1	A	278	MET	4.2
1	B	275	GLU	4.1
1	A	398	GLY	4.0
1	B	397	ALA	3.8
1	B	228	GLY	3.7
1	B	386	ARG	3.7
1	B	428	LEU	3.6
1	A	511	GLY	3.6
1	B	446	SER	3.2
1	A	510	LEU	3.0
1	B	389	THR	2.8
1	B	398	GLY	2.8
1	B	391	ASP	2.8
1	A	274	LYS	2.7
1	A	386	ARG	2.7
1	B	442	GLY	2.5
1	A	389	THR	2.5

Continued on next page...

Continued from previous page...

Mol	Chain	Res	Type	RSRZ
1	B	279	GLU	2.4
1	A	251	GLY	2.4
1	B	400	LYS	2.4
1	B	395	ALA	2.4
1	B	447	GLN	2.3
1	A	399	ALA	2.3
1	B	273	LEU	2.2
1	A	395	ALA	2.2
1	B	425	PHE	2.1
1	A	507	GLU	2.1
1	B	364	LEU	2.1
1	B	444	ASP	2.1
1	B	429	LEU	2.0

6.2 Non-standard residues in protein, DNA, RNA chains [i](#)

There are no non-standard protein/DNA/RNA residues in this entry.

6.3 Carbohydrates [i](#)

There are no carbohydrates in this entry.

6.4 Ligands [i](#)

In the following table, the Atoms column lists the number of modelled atoms in the group and the number defined in the chemical component dictionary. LLDF column lists the quality of electron density of the group with respect to its neighbouring residues in protein, DNA or RNA chains. The B-factors column lists the minimum, median, 95th percentile and maximum values of B factors of atoms in the group. The column labelled 'Q< 0.9' lists the number of atoms with occupancy less than 0.9.

Mol	Type	Chain	Res	Atoms	RSCC	RSR	LLDF	B-factors(\AA^2)	Q<0.9
2	XY3	B	1	41/41	0.94	0.11	0.06	15,22,30,37	0
2	XY3	A	1	41/41	0.96	0.10	-0.20	8,13,19,28	0

6.5 Other polymers [i](#)

There are no such residues in this entry.