



Full wwPDB X-ray Structure Validation Report ⓘ

Jan 31, 2016 – 09:27 PM GMT

PDB ID : 1P31
Title : Crystal Structure of UDP-N-acetylmuramic acid:L-alanine Ligase (MurC) from Haemophilus influenzae
Authors : Mol, C.D.; Brooun, A.; Dougan, D.R.; Hilgers, M.T.; Tari, L.W.; Wijnands, R.A.; Knuth, M.W.; McRee, D.E.; Swanson, R.V.
Deposited on : 2003-04-16
Resolution : 1.85 Å(reported)

This is a Full wwPDB X-ray Structure Validation Report for a publicly released PDB entry.
We welcome your comments at validation@mail.wwpdb.org
A user guide is available at
<http://wwpdb.org/validation/2016/XrayValidationReportHelp>
with specific help available everywhere you see the ⓘ symbol.

The following versions of software and data (see [references ⓘ](#)) were used in the production of this report:

MolProbity : 4.02b-467
Mogul : 1.7 (RC4), CSD as536be (2015)
Xtriage (Phenix) : 1.9-1692
EDS : rb-20026688
Percentile statistics : 20151230.v01 (using entries in the PDB archive December 30th 2015)
Refmac : 5.8.0135
CCP4 : 6.5.0
Ideal geometry (proteins) : Engh & Huber (2001)
Ideal geometry (DNA, RNA) : Parkinson et al. (1996)
Validation Pipeline (wwPDB-VP) : trunk26865

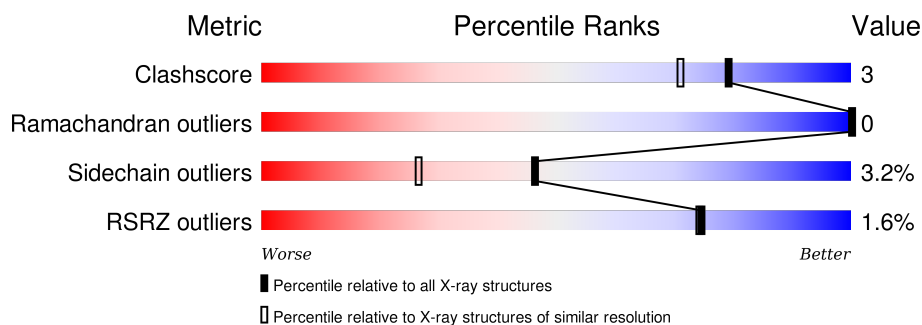
1 Overall quality at a glance

The following experimental techniques were used to determine the structure:

X-RAY DIFFRACTION

The reported resolution of this entry is 1.85 Å.

Percentile scores (ranging between 0-100) for global validation metrics of the entry are shown in the following graphic. The table shows the number of entries on which the scores are based.



Metric	Whole archive (#Entries)	Similar resolution (#Entries, resolution range(Å))
Clashscore	102246	1898 (1.86-1.86)
Ramachandran outliers	100387	1875 (1.86-1.86)
Sidechain outliers	100360	1875 (1.86-1.86)
RSRZ outliers	91569	1747 (1.86-1.86)

The table below summarises the geometric issues observed across the polymeric chains and their fit to the electron density. The red, orange, yellow and green segments on the lower bar indicate the fraction of residues that contain outliers for ≥ 3 , 2, 1 and 0 types of geometric quality criteria. A grey segment represents the fraction of residues that are not modelled. The numeric value for each fraction is indicated below the corresponding segment, with a dot representing fractions $\leq 5\%$. The upper red bar (where present) indicates the fraction of residues that have poor fit to the electron density. The numeric value is given above the bar.

Mol	Chain	Length	Quality of chain
1	A	475	
1	B	475	

2 Entry composition

There are 4 unique types of molecules in this entry. The entry contains 7928 atoms, of which 0 are hydrogens and 0 are deuteriums.

In the tables below, the ZeroOcc column contains the number of atoms modelled with zero occupancy, the AltConf column contains the number of residues with at least one atom in alternate conformation and the Trace column contains the number of residues modelled with at most 2 atoms.

- Molecule 1 is a protein called UDP-N-acetylmuramate--alanine ligase.

Mol	Chain	Residues	Atoms						ZeroOcc	AltConf	Trace
1	A	463	Total	C	N	O	S	Se	0	1	0
			3554	2238	623	676	3	14			
1	B	465	Total	C	N	O	S	Se	0	4	0
			3582	2257	629	679	3	14			

There are 30 discrepancies between the modelled and reference sequences:

Chain	Residue	Modelled	Actual	Comment	Reference
A	1	MSE	MET	MODIFIED RESIDUE	UNP P45066
A	15	MSE	MET	MODIFIED RESIDUE	UNP P45066
A	31	MSE	MET	MODIFIED RESIDUE	UNP P45066
A	110	MSE	MET	MODIFIED RESIDUE	UNP P45066
A	115	MSE	MET	MODIFIED RESIDUE	UNP P45066
A	135	MSE	MET	MODIFIED RESIDUE	UNP P45066
A	138	MSE	MET	MODIFIED RESIDUE	UNP P45066
A	187	MSE	MET	MODIFIED RESIDUE	UNP P45066
A	194	MSE	MET	MODIFIED RESIDUE	UNP P45066
A	199	MSE	MET	MODIFIED RESIDUE	UNP P45066
A	209	MSE	MET	MODIFIED RESIDUE	UNP P45066
A	228	MSE	MET	MODIFIED RESIDUE	UNP P45066
A	236	MSE	MET	MODIFIED RESIDUE	UNP P45066
A	371	MSE	MET	MODIFIED RESIDUE	UNP P45066
A	400	MSE	MET	MODIFIED RESIDUE	UNP P45066
B	1	MSE	MET	MODIFIED RESIDUE	UNP P45066
B	15	MSE	MET	MODIFIED RESIDUE	UNP P45066
B	31	MSE	MET	MODIFIED RESIDUE	UNP P45066
B	110	MSE	MET	MODIFIED RESIDUE	UNP P45066
B	115	MSE	MET	MODIFIED RESIDUE	UNP P45066
B	135	MSE	MET	MODIFIED RESIDUE	UNP P45066
B	138	MSE	MET	MODIFIED RESIDUE	UNP P45066
B	187	MSE	MET	MODIFIED RESIDUE	UNP P45066
B	194	MSE	MET	MODIFIED RESIDUE	UNP P45066
B	199	MSE	MET	MODIFIED RESIDUE	UNP P45066

Continued on next page...

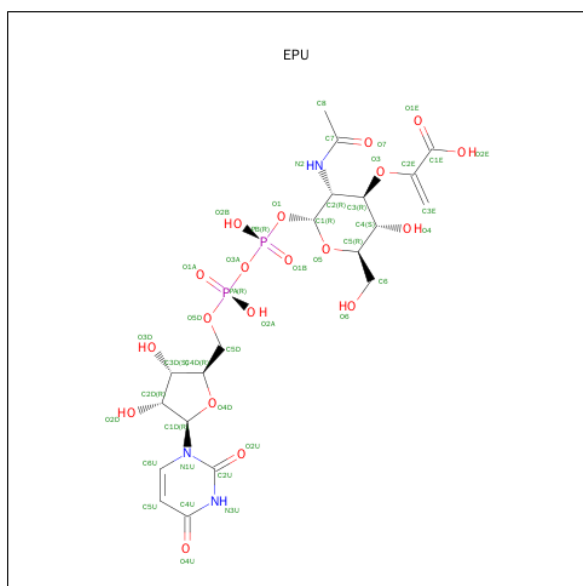
Continued from previous page...

Chain	Residue	Modelled	Actual	Comment	Reference
B	209	MSE	MET	MODIFIED RESIDUE	UNP P45066
B	228	MSE	MET	MODIFIED RESIDUE	UNP P45066
B	236	MSE	MET	MODIFIED RESIDUE	UNP P45066
B	371	MSE	MET	MODIFIED RESIDUE	UNP P45066
B	400	MSE	MET	MODIFIED RESIDUE	UNP P45066

- Molecule 2 is MAGNESIUM ION (three-letter code: MG) (formula: Mg).

Mol	Chain	Residues	Atoms	ZeroOcc	AltConf
2	B	2	Total Mg 2 2	0	0
2	A	2	Total Mg 2 2	0	0

- Molecule 3 is URIDINE-DIPHOSPHATE-2(N-ACETYLGUCOSAMINYL) BUTYRIC ACID (three-letter code: EPU) (formula: C₂₀H₂₉N₃O₁₉P₂).



Mol	Chain	Residues	Atoms	ZeroOcc	AltConf
3	A	1	Total C N O P 44 20 3 19 2	0	0
3	B	1	Total C N O P 44 20 3 19 2	0	0

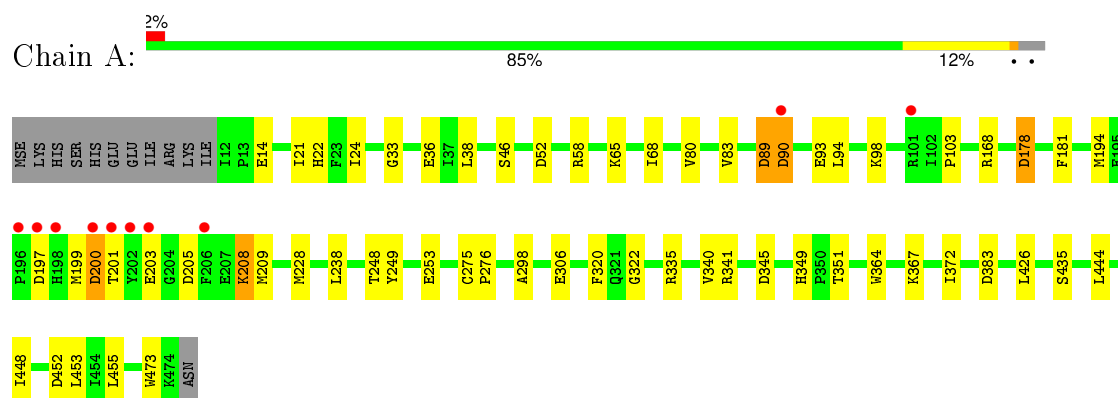
- Molecule 4 is water.

Mol	Chain	Residues	Atoms		ZeroOcc	AltConf
4	A	335	Total 335	O 335	0	0
4	B	365	Total 365	O 365	0	0

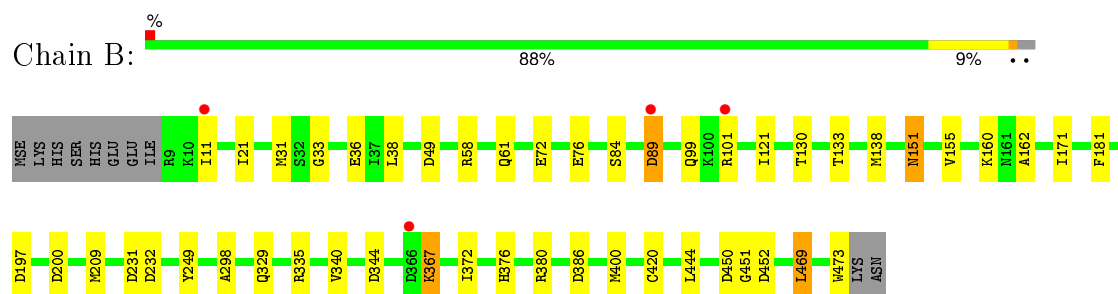
3 Residue-property plots [i](#)

These plots are drawn for all protein, RNA and DNA chains in the entry. The first graphic for a chain summarises the proportions of errors displayed in the second graphic. The second graphic shows the sequence view annotated by issues in geometry and electron density. Residues are color-coded according to the number of geometric quality criteria for which they contain at least one outlier: green = 0, yellow = 1, orange = 2 and red = 3 or more. A red dot above a residue indicates a poor fit to the electron density ($RSRZ > 2$). Stretches of 2 or more consecutive residues without any outlier are shown as a green connector. Residues present in the sample, but not in the model, are shown in grey.

- Molecule 1: UDP-N-acetylmuramate--alanine ligase



- Molecule 1: UDP-N-acetylmuramate--alanine ligase



4 Data and refinement statistics

Property	Value	Source
Space group	P 21 21 21	Depositor
Cell constants a, b, c, α , β , γ	91.52Å 92.27Å 118.17Å 90.00° 90.00° 90.00°	Depositor
Resolution (Å)	25.00 – 1.85 36.36 – 1.84	Depositor EDS
% Data completeness (in resolution range)	89.8 (25.00-1.85) 89.2 (36.36-1.84)	Depositor EDS
R_{merge}	0.06	Depositor
R_{sym}	(Not available)	Depositor
$\langle I/\sigma(I) \rangle$ ¹	2.58 (at 1.84Å)	Xtriage
Refinement program	REFMAC 5.1.19	Depositor
R, R_{free}	0.169 , 0.208 0.172 , (Not available)	Depositor DCC
R_{free} test set	No test flags present.	DCC
Wilson B-factor (Å ²)	19.3	Xtriage
Anisotropy	0.583	Xtriage
Bulk solvent k_{sol} (e/Å ³), B_{sol} (Å ²)	0.38 , 47.5	EDS
Estimated twinning fraction	0.026 for k,h,-l	Xtriage
L-test for twinning ²	$\langle L \rangle = 0.49$, $\langle L^2 \rangle = 0.32$	Xtriage
Outliers	0 of 77890 reflections	Xtriage
F_o, F_c correlation	0.96	EDS
Total number of atoms	7928	wwPDB-VP
Average B, all atoms (Å ²)	13.0	wwPDB-VP

Xtriage's analysis on translational NCS is as follows: *The largest off-origin peak in the Patterson function is 4.30% of the height of the origin peak. No significant pseudotranslation is detected.*

¹Intensities estimated from amplitudes.

²Theoretical values of $\langle |L| \rangle$, $\langle L^2 \rangle$ for acentric reflections are 0.5, 0.375 respectively for untwinned datasets, and 0.333, 0.2 for perfectly twinned datasets.

5 Model quality

5.1 Standard geometry

Bond lengths and bond angles in the following residue types are not validated in this section: MG, EPU

The Z score for a bond length (or angle) is the number of standard deviations the observed value is removed from the expected value. A bond length (or angle) with $|Z| > 5$ is considered an outlier worth inspection. RMSZ is the root-mean-square of all Z scores of the bond lengths (or angles).

Mol	Chain	Bond lengths		Bond angles	
		RMSZ	# Z >5	RMSZ	# Z >5
1	A	0.37	0/3607	0.69	7/4859 (0.1%)
1	B	0.38	0/3646	0.70	8/4910 (0.2%)
All	All	0.38	0/7253	0.70	15/9769 (0.2%)

There are no bond length outliers.

All (15) bond angle outliers are listed below:

Mol	Chain	Res	Type	Atoms	Z	Observed(°)	Ideal(°)
1	B	386	ASP	CB-CG-OD2	6.17	123.85	118.30
1	B	344	ASP	CB-CG-OD2	5.90	123.61	118.30
1	A	197	ASP	CB-CG-OD2	5.84	123.56	118.30
1	B	232	ASP	CB-CG-OD2	5.74	123.47	118.30
1	A	383	ASP	CB-CG-OD2	5.44	123.20	118.30
1	A	200	ASP	CB-CG-OD2	5.34	123.11	118.30
1	A	90	ASP	CB-CG-OD2	5.33	123.10	118.30
1	A	178	ASP	CB-CG-OD2	5.22	123.00	118.30
1	A	345	ASP	CB-CG-OD2	5.20	122.98	118.30
1	A	89	ASP	CB-CG-OD2	5.13	122.92	118.30
1	B	200	ASP	CB-CG-OD2	5.13	122.92	118.30
1	B	49	ASP	CB-CG-OD2	5.11	122.89	118.30
1	B	450	ASP	CB-CG-OD2	5.03	122.83	118.30
1	B	231	ASP	CB-CG-OD2	5.03	122.83	118.30
1	B	89	ASP	CB-CG-OD2	5.00	122.80	118.30

There are no chirality outliers.

There are no planarity outliers.

5.2 Too-close contacts ⓘ

In the following table, the Non-H and H(model) columns list the number of non-hydrogen atoms and hydrogen atoms in the chain respectively. The H(added) column lists the number of hydrogen atoms added and optimized by MolProbity. The Clashes column lists the number of clashes within the asymmetric unit, whereas Symm-Clashes lists symmetry related clashes.

Mol	Chain	Non-H	H(model)	H(added)	Clashes	Symm-Clashes
1	A	3554	0	3541	28	0
1	B	3582	0	3582	22	0
2	A	2	0	0	0	0
2	B	2	0	0	0	0
3	A	44	0	26	0	0
3	B	44	0	26	0	0
4	A	335	0	0	2	0
4	B	365	0	0	4	0
All	All	7928	0	7175	50	0

The all-atom clashscore is defined as the number of clashes found per 1000 atoms (including hydrogen atoms). The all-atom clashscore for this structure is 3.

All (50) close contacts within the same asymmetric unit are listed below, sorted by their clash magnitude.

Atom-1	Atom-2	Interatomic distance (Å)	Clash overlap (Å)
1:A:178:ASP:HA	1:A:201:THR:HG21	1.50	0.91
1:A:194:MSE:HG2	1:A:209:MSE:HE3	1.60	0.84
1:B:36:GLU:OE1	1:B:58:ARG:NH2	2.22	0.71
1:A:21:ILE:HD13	1:A:38:LEU:HD13	1.75	0.68
1:A:435:SER:O	4:A:965:HOH:O	2.15	0.63
1:A:22:HIS:HE1	1:A:93:GLU:OE1	1.82	0.62
1:B:21:ILE:HD13	1:B:38:LEU:HD13	1.82	0.61
1:B:130:THR:HA	1:B:151:ASN:HD21	1.66	0.60
1:A:349[B]:HIS:ND1	1:A:351:THR:HG22	2.18	0.59
1:A:205:ASP:HB3	1:A:208:LYS:HB2	1.86	0.57
1:B:376:HIS:HD2	1:B:380:ARG:HH22	1.52	0.57
1:A:194:MSE:CG	1:A:209:MSE:HE3	2.33	0.56
1:B:160:LYS:HD3	1:B:162:ALA:O	2.05	0.56
1:B:138:MSE:HE3	1:B:155:VAL:HG11	1.91	0.53
1:A:372:ILE:HD11	1:A:444:LEU:HD11	1.89	0.53
1:B:340:VAL:HG12	1:B:452:ASP:HB2	1.91	0.52
1:A:83:VAL:HG11	1:A:94:LEU:HD13	1.92	0.52
1:A:36:GLU:HG3	1:A:58:ARG:HH12	1.75	0.51
1:B:329:GLN:HB3	4:B:1129:HOH:O	2.09	0.51

Continued on next page...

Continued from previous page...

Atom-1	Atom-2	Interatomic distance (Å)	Clash overlap (Å)
1:B:197:ASP:O	1:B:209:MSE:HE1	2.12	0.49
1:A:275:CYS:HB3	1:A:276:PRO:HD2	1.96	0.48
1:A:306:GLU:HG3	1:A:306:GLU:O	2.12	0.48
1:A:22:HIS:HD2	1:A:46:SER:OG	1.97	0.48
1:B:249:TYR:CZ	1:B:298:ALA:HB2	2.48	0.48
1:A:228:MSE:O	1:A:248:THR:HA	2.14	0.47
1:B:121:ILE:HD12	1:B:171:ILE:CD1	2.44	0.47
1:A:249:TYR:CZ	1:A:298:ALA:HB2	2.50	0.46
1:A:364:TRP:CD1	1:A:367:LYS:HB2	2.51	0.46
1:A:33:GLY:HA3	4:A:901:HOH:O	2.16	0.46
1:B:400:MSE:HG3	1:B:420:CYS:SG	2.57	0.45
1:A:364:TRP:CE2	1:A:453:LEU:HB2	2.53	0.44
1:A:340:VAL:HG11	1:A:448:ILE:HG12	1.98	0.44
1:B:372:ILE:HD11	1:B:444:LEU:HD11	1.98	0.44
1:B:367:LYS:HD3	1:B:451:GLY:HA3	1.98	0.44
1:B:33:GLY:HA3	4:B:836:HOH:O	2.16	0.44
1:A:52:ASP:HB2	1:A:68:ILE:HG13	1.99	0.44
1:A:340:VAL:HG12	1:A:452:ASP:HB2	2.00	0.43
1:B:335:ARG:HD3	1:B:473:TRP:CD2	2.55	0.42
1:A:24:ILE:HD12	1:A:83:VAL:HG12	2.00	0.42
1:A:80:VAL:HG23	1:A:103:PRO:HB2	2.02	0.42
1:B:444:LEU:CD1	1:B:469:LEU:HD11	2.49	0.42
1:A:199:MSE:O	1:A:203:GLU:N	2.53	0.42
1:B:376:HIS:HE1	4:B:747:HOH:O	2.04	0.41
1:B:58:ARG:NH1	4:B:861:HOH:O	2.53	0.41
1:B:31:MSE:HG3	1:B:84:SER:HB2	2.03	0.41
1:A:320:PHE:CE1	1:A:322:GLY:HA2	2.56	0.41
1:A:335:ARG:HD3	1:A:473:TRP:CD2	2.56	0.41
1:B:133:THR:HG23	1:B:171:ILE:HG22	2.03	0.41
1:B:400:MSE:HB3	1:B:400:MSE:HE3	1.93	0.41
1:A:194:MSE:HE1	1:A:238:LEU:CD1	2.51	0.40

There are no symmetry-related clashes.

5.3 Torsion angles [i](#)

5.3.1 Protein backbone [i](#)

In the following table, the Percentiles column shows the percent Ramachandran outliers of the chain as a percentile score with respect to all X-ray entries followed by that with respect to entries of similar resolution.

The Analysed column shows the number of residues for which the backbone conformation was analysed, and the total number of residues.

Mol	Chain	Analysed	Favoured	Allowed	Outliers	Percentiles	
1	A	462/475 (97%)	458 (99%)	4 (1%)	0	100	100
1	B	467/475 (98%)	463 (99%)	4 (1%)	0	100	100
All	All	929/950 (98%)	921 (99%)	8 (1%)	0	100	100

There are no Ramachandran outliers to report.

5.3.2 Protein sidechains ⓘ

In the following table, the Percentiles column shows the percent sidechain outliers of the chain as a percentile score with respect to all X-ray entries followed by that with respect to entries of similar resolution.

The Analysed column shows the number of residues for which the sidechain conformation was analysed, and the total number of residues.

Mol	Chain	Analysed	Rotameric	Outliers	Percentiles	
1	A	376/372 (101%)	363 (96%)	13 (4%)	43	23
1	B	381/372 (102%)	370 (97%)	11 (3%)	50	31
All	All	757/744 (102%)	733 (97%)	24 (3%)	46	27

All (24) residues with a non-rotameric sidechain are listed below:

Mol	Chain	Res	Type
1	A	14	GLU
1	A	65	LYS
1	A	89	ASP
1	A	90	ASP
1	A	98	LYS
1	A	168	ARG
1	A	181	PHE
1	A	200	ASP
1	A	208	LYS
1	A	253	GLU
1	A	341	ARG
1	A	426	LEU
1	A	455	LEU
1	B	11	ILE
1	B	61	GLN

Continued on next page...

Continued from previous page...

Mol	Chain	Res	Type
1	B	72	GLU
1	B	76	GLU
1	B	89	ASP
1	B	99	GLN
1	B	101	ARG
1	B	151	ASN
1	B	181	PHE
1	B	367	LYS
1	B	469	LEU

Some sidechains can be flipped to improve hydrogen bonding and reduce clashes. All (12) such sidechains are listed below:

Mol	Chain	Res	Type
1	A	22	HIS
1	A	44	GLN
1	A	321	GLN
1	B	20	GLN
1	B	99	GLN
1	B	106	GLN
1	B	142	GLN
1	B	151	ASN
1	B	163	HIS
1	B	282	ASN
1	B	376	HIS
1	B	446	GLN

5.3.3 RNA ⓘ

There are no RNA molecules in this entry.

5.4 Non-standard residues in protein, DNA, RNA chains ⓘ

There are no non-standard protein/DNA/RNA residues in this entry.

5.5 Carbohydrates ⓘ

There are no carbohydrates in this entry.

5.6 Ligand geometry

Of 6 ligands modelled in this entry, 4 are monoatomic - leaving 2 for Mogul analysis.

In the following table, the Counts columns list the number of bonds (or angles) for which Mogul statistics could be retrieved, the number of bonds (or angles) that are observed in the model and the number of bonds (or angles) that are defined in the chemical component dictionary. The Link column lists molecule types, if any, to which the group is linked. The Z score for a bond length (or angle) is the number of standard deviations the observed value is removed from the expected value. A bond length (or angle) with $|Z| > 2$ is considered an outlier worth inspection. RMSZ is the root-mean-square of all Z scores of the bond lengths (or angles).

Mol	Type	Chain	Res	Link	Bond lengths			Bond angles		
					Counts	RMSZ	# $ Z > 2$	Counts	RMSZ	# $ Z > 2$
3	EPU	A	598	2	34,46,46	0.95	2 (5%)	47,69,69	1.47	4 (8%)
3	EPU	B	602	2	34,46,46	0.93	2 (5%)	47,69,69	1.38	3 (6%)

In the following table, the Chirals column lists the number of chiral outliers, the number of chiral centers analysed, the number of these observed in the model and the number defined in the chemical component dictionary. Similar counts are reported in the Torsion and Rings columns. '-' means no outliers of that kind were identified.

Mol	Type	Chain	Res	Link	Chirals	Torsions	Rings
3	EPU	A	598	2	-	0/24/71/71	0/3/3/3
3	EPU	B	602	2	-	0/24/71/71	0/3/3/3

All (4) bond length outliers are listed below:

Mol	Chain	Res	Type	Atoms	Z	Observed(Å)	Ideal(Å)
3	B	602	EPU	C7-N2	2.61	1.44	1.34
3	A	598	EPU	C7-N2	2.82	1.45	1.34
3	A	598	EPU	O3-C2E	3.23	1.46	1.36
3	B	602	EPU	O3-C2E	3.29	1.47	1.36

All (7) bond angle outliers are listed below:

Mol	Chain	Res	Type	Atoms	Z	Observed(°)	Ideal(°)
3	A	598	EPU	O3A-PA-O5D	-2.24	97.00	102.94
3	A	598	EPU	O3-C3-C2	2.64	112.95	108.21
3	A	598	EPU	O3-C3-C4	3.54	115.63	107.76
3	B	602	EPU	O3-C3-C4	3.57	115.69	107.76
3	B	602	EPU	O3-C3-C2	3.58	114.64	108.21
3	B	602	EPU	C4U-N3U-C2U	6.18	120.26	114.14
3	A	598	EPU	C4U-N3U-C2U	7.20	121.28	114.14

There are no chirality outliers.

There are no torsion outliers.

There are no ring outliers.

No monomer is involved in short contacts.

5.7 Other polymers

There are no such residues in this entry.

5.8 Polymer linkage issues

There are no chain breaks in this entry.

6 Fit of model and data [i](#)

6.1 Protein, DNA and RNA chains [i](#)

In the following table, the column labelled ‘#RSRZ> 2’ contains the number (and percentage) of RSRZ outliers, followed by percent RSRZ outliers for the chain as percentile scores relative to all X-ray entries and entries of similar resolution. The OWAB column contains the minimum, median, 95th percentile and maximum values of the occupancy-weighted average B-factor per residue. The column labelled ‘Q< 0.9’ lists the number of (and percentage) of residues with an average occupancy less than 0.9.

Mol	Chain	Analysed	<RSRZ>	#RSRZ>2	OWAB(Å ²)	Q<0.9
1	A	449/475 (94%)	-0.04	10 (2%) 65 63	6, 11, 17, 33	0
1	B	451/475 (94%)	-0.10	4 (0%) 85 85	6, 10, 17, 38	0
All	All	900/950 (94%)	-0.07	14 (1%) 74 74	6, 11, 17, 38	0

All (14) RSRZ outliers are listed below:

Mol	Chain	Res	Type	RSRZ
1	A	203	GLU	6.7
1	A	201	THR	6.5
1	A	200	ASP	5.2
1	B	11	ILE	4.9
1	A	198	HIS	3.5
1	A	196	PRO	3.5
1	B	366	ASP	3.4
1	A	202	TYR	3.2
1	A	197	ASP	3.0
1	A	101	ARG	2.9
1	A	206	PHE	2.8
1	B	89	ASP	2.7
1	A	90	ASP	2.3
1	B	101	ARG	2.1

6.2 Non-standard residues in protein, DNA, RNA chains [i](#)

There are no non-standard protein/DNA/RNA residues in this entry.

6.3 Carbohydrates [i](#)

There are no carbohydrates in this entry.

6.4 Ligands [i](#)

In the following table, the Atoms column lists the number of modelled atoms in the group and the number defined in the chemical component dictionary. LLDF column lists the quality of electron density of the group with respect to its neighbouring residues in protein, DNA or RNA chains. The B-factors column lists the minimum, median, 95th percentile and maximum values of B factors of atoms in the group. The column labelled 'Q< 0.9' lists the number of atoms with occupancy less than 0.9.

Mol	Type	Chain	Res	Atoms	RSCC	RSR	LLDF	B-factors(Å ²)	Q<0.9
3	EPU	A	598	44/44	0.91	0.14	0.36	24,36,43,43	0
3	EPU	B	602	44/44	0.97	0.10	0.13	18,20,28,31	0
2	MG	A	776	1/1	0.89	0.10	-0.77	42,42,42,42	0
2	MG	B	601	1/1	0.98	0.07	-0.83	17,17,17,17	0
2	MG	A	611	1/1	0.99	0.05	-	30,30,30,30	0
2	MG	B	710	1/1	0.95	0.09	-	42,42,42,42	0

6.5 Other polymers [i](#)

There are no such residues in this entry.