



wwPDB X-ray Structure Validation Summary Report ⓘ

Feb 19, 2016 – 07:58 PM GMT

PDB ID : 4P5A
Title : Crystal structure of a UMP/dUMP methylase PolB from *Streptomyces cacaoi* bound with 5-Br UMP
Authors : Li, Y.; Chen, W.; Li, J.; Xia, Z.; Deng, Z.; Zhou, J.
Deposited on : 2014-03-15
Resolution : 1.76 Å(reported)

This is a wwPDB X-ray Structure Validation Summary Report for a publicly released PDB entry.
We welcome your comments at validation@mail.wwpdb.org
A user guide is available at
<http://wwpdb.org/validation/2016/XrayValidationReportHelp>
with specific help available everywhere you see the ⓘ symbol.

The following versions of software and data (see [references ⓘ](#)) were used in the production of this report:

MolProbity : 4.02b-467
Mogul : 1.7.1 (RC1), CSD as537be (2016)
Xtriage (Phenix) : 1.9-1692
EDS : rb-20026982
Percentile statistics : 20151230.v01 (using entries in the PDB archive December 30th 2015)
Refmac : 5.8.0135
CCP4 : 6.5.0
Ideal geometry (proteins) : Engh & Huber (2001)
Ideal geometry (DNA, RNA) : Parkinson et al. (1996)
Validation Pipeline (wwPDB-VP) : rb-20026982

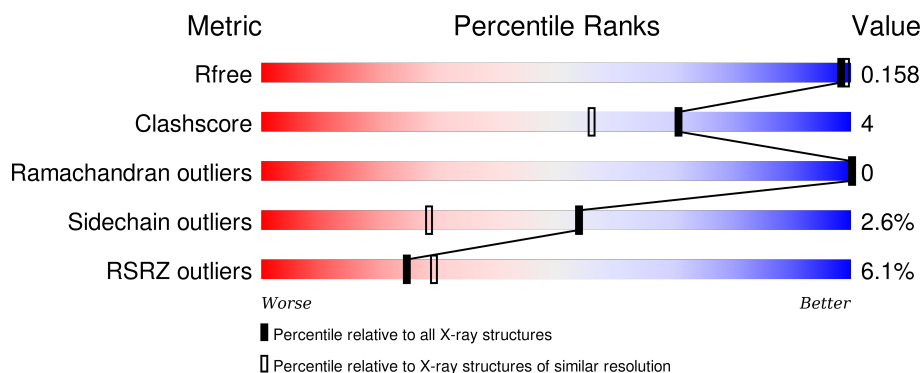
1 Overall quality at a glance ⓘ

The following experimental techniques were used to determine the structure:

X-RAY DIFFRACTION

The reported resolution of this entry is 1.76 Å.

Percentile scores (ranging between 0-100) for global validation metrics of the entry are shown in the following graphic. The table shows the number of entries on which the scores are based.



Metric	Whole archive (#Entries)	Similar resolution (#Entries, resolution range(Å))
R_{free}	91344	1609 (1.76-1.76)
Clashscore	102246	1730 (1.76-1.76)
Ramachandran outliers	100387	1711 (1.76-1.76)
Sidechain outliers	100360	1711 (1.76-1.76)
RSRZ outliers	91569	1610 (1.76-1.76)

The table below summarises the geometric issues observed across the polymeric chains and their fit to the electron density. The red, orange, yellow and green segments on the lower bar indicate the fraction of residues that contain outliers for ≥ 3 , 2, 1 and 0 types of geometric quality criteria. A grey segment represents the fraction of residues that are not modelled. The numeric value for each fraction is indicated below the corresponding segment, with a dot representing fractions $\leq 5\%$. The upper red bar (where present) indicates the fraction of residues that have poor fit to the electron density. The numeric value is given above the bar.

Mol	Chain	Length	Quality of chain
1	A	239	<div> <div>8%</div> <div>77%</div> <div>16%</div> <div>• 5%</div> </div>
1	B	239	<div> <div>6%</div> <div>81%</div> <div>11%</div> <div>• 5%</div> </div>
1	C	239	<div> <div>3%</div> <div>79%</div> <div>13%</div> <div>• 7%</div> </div>
1	D	239	<div> <div>6%</div> <div>79%</div> <div>13%</div> <div>• 6%</div> </div>

2 Entry composition [i](#)

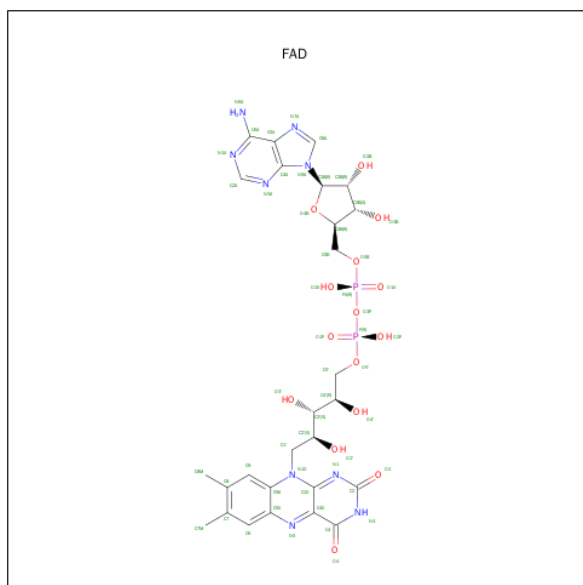
There are 4 unique types of molecules in this entry. The entry contains 8303 atoms, of which 0 are hydrogens and 0 are deuteriums.

In the tables below, the ZeroOcc column contains the number of atoms modelled with zero occupancy, the AltConf column contains the number of residues with at least one atom in alternate conformation and the Trace column contains the number of residues modelled with at most 2 atoms.

- Molecule 1 is a protein called Thymidylate synthase ThyX.

Mol	Chain	Residues	Atoms					ZeroOcc	AltConf	Trace
1	A	226	Total	C	N	O	S	0	1	0
			1816	1137	340	331	8			
1	B	227	Total	C	N	O	S	0	4	0
			1852	1160	347	337	8			
1	C	223	Total	C	N	O	S	0	2	0
			1798	1128	333	329	8			
1	D	225	Total	C	N	O	S	0	1	0
			1804	1129	335	332	8			

- Molecule 2 is FLAVIN-ADENINE DINUCLEOTIDE (three-letter code: FAD) (formula: $C_{27}H_{33}N_9O_{15}P_2$).



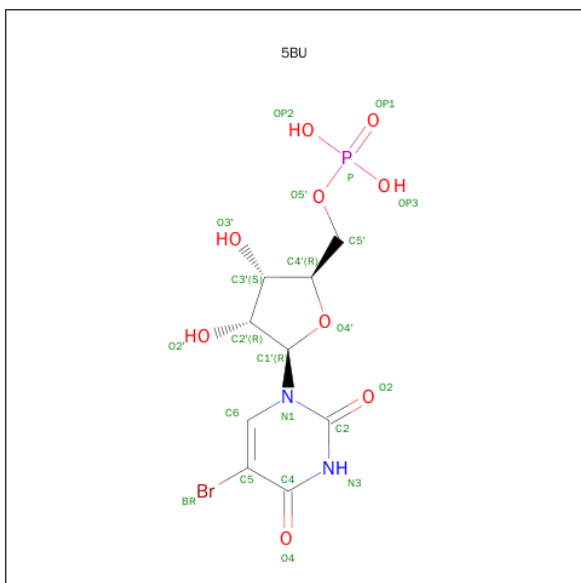
Mol	Chain	Residues	Atoms					ZeroOcc	AltConf
2	A	1	Total	C	N	O	P	0	0
			53	27	9	15	2		
2	B	1	Total	C	N	O	P	0	0
			53	27	9	15	2		

Continued on next page...

Continued from previous page...

Mol	Chain	Residues	Atoms					ZeroOcc	AltConf
2	C	1	Total	C	N	O	P	0	0
			53	27	9	15	2		
2	D	1	Total	C	N	O	P	0	0
			53	27	9	15	2		

- Molecule 3 is 5-BROMO-URIDINE-5'-MONOPHOSPHATE (three-letter code: 5BU) (formula: C₉H₁₂BrN₂O₉P).



Mol	Chain	Residues	Atoms						ZeroOcc	AltConf
3	A	1	Total	Br	C	N	O	P	0	0
			22	1	9	2	9	1		
3	B	1	Total	Br	C	N	O	P	0	0
			22	1	9	2	9	1		
3	C	1	Total	Br	C	N	O	P	0	0
			22	1	9	2	9	1		
3	D	1	Total	Br	C	N	O	P	0	0
			22	1	9	2	9	1		

- Molecule 4 is water.

Mol	Chain	Residues	Atoms		ZeroOcc	AltConf
4	A	187	Total	O	0	0
			187	187		
4	B	173	Total	O	0	0
			173	173		
4	C	185	Total	O	0	0
			185	185		

Continued on next page...

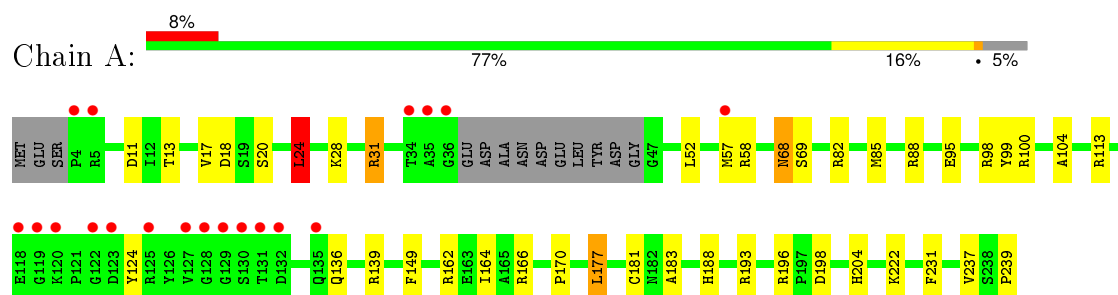
Continued from previous page...

Mol	Chain	Residues	Atoms		ZeroOcc	AltConf
4	D	188	Total 188	O 188	0	0

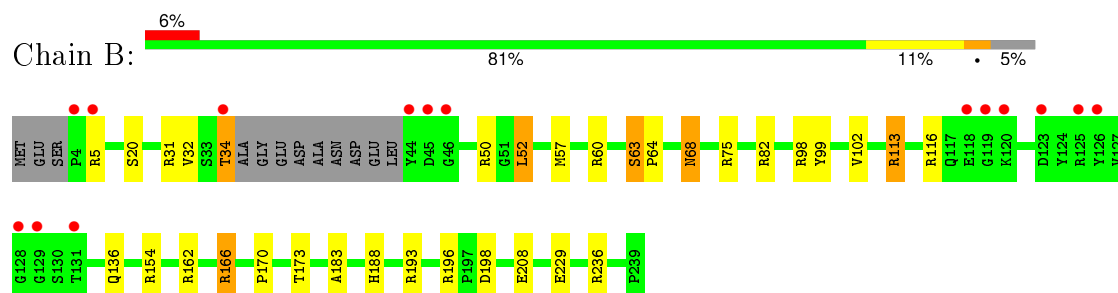
3 Residue-property plots [i](#)

These plots are drawn for all protein, RNA and DNA chains in the entry. The first graphic for a chain summarises the proportions of errors displayed in the second graphic. The second graphic shows the sequence view annotated by issues in geometry and electron density. Residues are color-coded according to the number of geometric quality criteria for which they contain at least one outlier: green = 0, yellow = 1, orange = 2 and red = 3 or more. A red dot above a residue indicates a poor fit to the electron density ($RSRZ > 2$). Stretches of 2 or more consecutive residues without any outlier are shown as a green connector. Residues present in the sample, but not in the model, are shown in grey.

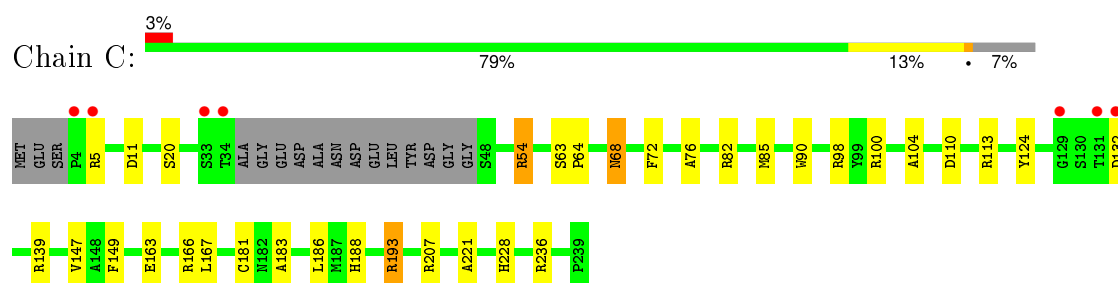
• Molecule 1: Thymidylate synthase ThyX



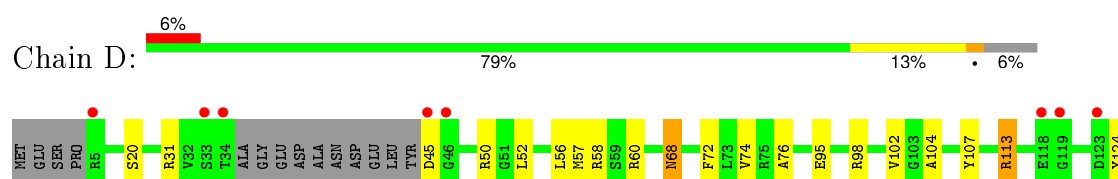
• Molecule 1: Thymidylate synthase ThyX



• Molecule 1: Thymidylate synthase ThyX



• Molecule 1: Thymidylate synthase ThyX





4 Data and refinement statistics

Property	Value	Source
Space group	P 1 21 1	Depositor
Cell constants a, b, c, α , β , γ	62.90Å 94.16Å 91.95Å 90.00° 98.30° 90.00°	Depositor
Resolution (Å)	50.00 – 1.76 36.46 – 1.76	Depositor EDS
% Data completeness (in resolution range)	98.4 (50.00-1.76) 98.4 (36.46-1.76)	Depositor EDS
R_{merge}	(Not available)	Depositor
R_{sym}	(Not available)	Depositor
$\langle I/\sigma(I) \rangle$ ¹	3.70 (at 1.76Å)	Xtriage
Refinement program	REFMAC 5.5.0102	Depositor
R, R_{free}	0.154 , 0.193 0.157 , 0.158	Depositor DCC
R_{free} test set	5180 reflections (5.26%)	DCC
Wilson B-factor (Å ²)	15.2	Xtriage
Anisotropy	0.189	Xtriage
Bulk solvent k_{sol} (e/Å ³), B_{sol} (Å ²)	0.35 , 46.8	EDS
Estimated twinning fraction	No twinning to report.	Xtriage
L-test for twinning ²	$\langle L \rangle = 0.50$, $\langle L^2 \rangle = 0.33$	Xtriage
Outliers	0 of 103819 reflections	Xtriage
F_o, F_c correlation	0.96	EDS
Total number of atoms	8303	wwPDB-VP
Average B, all atoms (Å ²)	19.0	wwPDB-VP

Xtriage's analysis on translational NCS is as follows: *The largest off-origin peak in the Patterson function is 4.59% of the height of the origin peak. No significant pseudotranslation is detected.*

¹Intensities estimated from amplitudes.

²Theoretical values of $\langle |L| \rangle$, $\langle L^2 \rangle$ for acentric reflections are 0.5, 0.375 respectively for untwinned datasets, and 0.333, 0.2 for perfectly twinned datasets.

5 Model quality

5.1 Standard geometry

Bond lengths and bond angles in the following residue types are not validated in this section: 5BU, FAD

The Z score for a bond length (or angle) is the number of standard deviations the observed value is removed from the expected value. A bond length (or angle) with $|Z| > 5$ is considered an outlier worth inspection. RMSZ is the root-mean-square of all Z scores of the bond lengths (or angles).

Mol	Chain	Bond lengths		Bond angles	
		RMSZ	# $ Z > 5$	RMSZ	# $ Z > 5$
1	A	1.41	8/1856 (0.4%)	1.23	13/2511 (0.5%)
1	B	1.44	5/1900 (0.3%)	1.21	15/2570 (0.6%)
1	C	1.44	7/1844 (0.4%)	1.22	12/2495 (0.5%)
1	D	1.42	10/1846 (0.5%)	1.20	10/2497 (0.4%)
All	All	1.43	30/7446 (0.4%)	1.22	50/10073 (0.5%)

The worst 5 of 30 bond length outliers are listed below:

Mol	Chain	Res	Type	Atoms	Z	Observed(Å)	Ideal(Å)
1	C	76	ALA	CA-CB	8.44	1.70	1.52
1	B	162	ARG	CB-CG	-7.57	1.32	1.52
1	D	107	TYR	CD1-CE1	7.54	1.50	1.39
1	B	63	SER	CB-OG	-7.43	1.32	1.42
1	C	163	GLU	CB-CG	7.37	1.66	1.52

The worst 5 of 50 bond angle outliers are listed below:

Mol	Chain	Res	Type	Atoms	Z	Observed(°)	Ideal(°)
1	A	58	ARG	NE-CZ-NH1	10.88	125.74	120.30
1	D	198	ASP	CB-CG-OD2	9.41	126.77	118.30
1	B	154	ARG	NE-CZ-NH1	8.67	124.64	120.30
1	A	162	ARG	NE-CZ-NH2	-8.62	115.99	120.30
1	B	82	ARG	NE-CZ-NH2	8.57	124.59	120.30

There are no chirality outliers.

There are no planarity outliers.

5.2 Too-close contacts ⓘ

In the following table, the Non-H and H(model) columns list the number of non-hydrogen atoms and hydrogen atoms in the chain respectively. The H(added) column lists the number of hydrogen atoms added and optimized by MolProbity. The Clashes column lists the number of clashes within the asymmetric unit, whereas Symm-Clashes lists symmetry related clashes.

Mol	Chain	Non-H	H(model)	H(added)	Clashes	Symm-Clashes
1	A	1816	0	1792	19	0
1	B	1852	0	1824	16	0
1	C	1798	0	1778	18	0
1	D	1804	0	1775	16	0
2	A	53	0	31	0	0
2	B	53	0	31	0	0
2	C	53	0	31	0	0
2	D	53	0	31	0	0
3	A	22	0	10	2	0
3	B	22	0	10	2	0
3	C	22	0	10	2	0
3	D	22	0	10	2	0
4	A	187	0	0	4	0
4	B	173	0	0	6	0
4	C	185	0	0	6	0
4	D	188	0	0	5	0
All	All	8303	0	7333	65	0

The all-atom clashscore is defined as the number of clashes found per 1000 atoms (including hydrogen atoms). The all-atom clashscore for this structure is 4.

The worst 5 of 65 close contacts within the same asymmetric unit are listed below, sorted by their clash magnitude.

Atom-1	Atom-2	Interatomic distance (Å)	Clash overlap (Å)
1:D:198:ASP:HB3	4:D:413:HOH:O	1.50	1.10
1:B:68:ASN:HD21	1:B:183:ALA:H	1.19	0.90
1:C:193:ARG:HH12	3:D:301:5BU:H3	1.19	0.90
3:C:302:5BU:H3	1:D:193:ARG:HH12	1.17	0.89
1:A:193:ARG:HH12	3:B:301:5BU:H3	1.21	0.89

There are no symmetry-related clashes.

5.3 Torsion angles [i](#)

5.3.1 Protein backbone [i](#)

In the following table, the Percentiles column shows the percent Ramachandran outliers of the chain as a percentile score with respect to all X-ray entries followed by that with respect to entries of similar resolution.

The Analysed column shows the number of residues for which the backbone conformation was analysed, and the total number of residues.

Mol	Chain	Analysed	Favoured	Allowed	Outliers	Percentiles	
1	A	223/239 (93%)	221 (99%)	2 (1%)	0	100	100
1	B	227/239 (95%)	224 (99%)	3 (1%)	0	100	100
1	C	221/239 (92%)	218 (99%)	3 (1%)	0	100	100
1	D	222/239 (93%)	220 (99%)	2 (1%)	0	100	100
All	All	893/956 (93%)	883 (99%)	10 (1%)	0	100	100

There are no Ramachandran outliers to report.

5.3.2 Protein sidechains [i](#)

In the following table, the Percentiles column shows the percent sidechain outliers of the chain as a percentile score with respect to all X-ray entries followed by that with respect to entries of similar resolution.

The Analysed column shows the number of residues for which the sidechain conformation was analysed, and the total number of residues.

Mol	Chain	Analysed	Rotameric	Outliers	Percentiles	
1	A	191/201 (95%)	186 (97%)	5 (3%)	54	28
1	B	196/201 (98%)	190 (97%)	6 (3%)	47	21
1	C	192/201 (96%)	187 (97%)	5 (3%)	54	28
1	D	191/201 (95%)	187 (98%)	4 (2%)	61	37
All	All	770/804 (96%)	750 (97%)	20 (3%)	54	28

5 of 20 residues with a non-rotameric sidechain are listed below:

Mol	Chain	Res	Type
1	B	113	ARG
1	B	166	ARG
1	D	68	ASN

Continued on next page...

Continued from previous page...

Mol	Chain	Res	Type
1	B	52	LEU
1	B	68	ASN

Some sidechains can be flipped to improve hydrogen bonding and reduce clashes. 5 of 20 such sidechains are listed below:

Mol	Chain	Res	Type
1	B	188	HIS
1	B	195	HIS
1	D	68	ASN
1	B	117	GLN
1	B	135	GLN

5.3.3 RNA [i](#)

There are no RNA molecules in this entry.

5.4 Non-standard residues in protein, DNA, RNA chains [i](#)

There are no non-standard protein/DNA/RNA residues in this entry.

5.5 Carbohydrates [i](#)

There are no carbohydrates in this entry.

5.6 Ligand geometry [i](#)

8 ligands are modelled in this entry.

In the following table, the Counts columns list the number of bonds (or angles) for which Mogul statistics could be retrieved, the number of bonds (or angles) that are observed in the model and the number of bonds (or angles) that are defined in the chemical component dictionary. The Link column lists molecule types, if any, to which the group is linked. The Z score for a bond length (or angle) is the number of standard deviations the observed value is removed from the expected value. A bond length (or angle) with $|Z| > 2$ is considered an outlier worth inspection. RMSZ is the root-mean-square of all Z scores of the bond lengths (or angles).

Mol	Type	Chain	Res	Link	Bond lengths			Bond angles		
					Counts	RMSZ	$\# Z > 2$	Counts	RMSZ	$\# Z > 2$
2	FAD	A	301	-	52,58,58	2.05	10 (19%)	52,89,89	2.49	10 (19%)

Mol	Type	Chain	Res	Link	Bond lengths			Bond angles		
					Counts	RMSZ	# Z > 2	Counts	RMSZ	# Z > 2
3	5BU	A	302	-	18,23,23	1.73	4 (22%)	22,35,35	2.24	5 (22%)
3	5BU	B	301	-	18,23,23	1.86	6 (33%)	22,35,35	3.03	5 (22%)
2	FAD	B	302	-	52,58,58	1.93	11 (21%)	52,89,89	2.36	12 (23%)
2	FAD	C	301	-	52,58,58	2.09	10 (19%)	52,89,89	2.27	13 (25%)
3	5BU	C	302	-	18,23,23	1.46	2 (11%)	22,35,35	2.36	7 (31%)
3	5BU	D	301	-	18,23,23	1.73	5 (27%)	22,35,35	3.02	7 (31%)
2	FAD	D	302	-	52,58,58	1.99	14 (26%)	52,89,89	2.31	15 (28%)

In the following table, the Chirals column lists the number of chiral outliers, the number of chiral centers analysed, the number of these observed in the model and the number defined in the chemical component dictionary. Similar counts are reported in the Torsion and Rings columns. '-' means no outliers of that kind were identified.

Mol	Type	Chain	Res	Link	Chirals	Torsions	Rings
2	FAD	A	301	-	-	0/30/50/50	0/6/6/6
3	5BU	A	302	-	-	0/6/26/26	0/2/2/2
3	5BU	B	301	-	-	0/6/26/26	0/2/2/2
2	FAD	B	302	-	-	0/30/50/50	0/6/6/6
2	FAD	C	301	-	-	0/30/50/50	0/6/6/6
3	5BU	C	302	-	-	0/6/26/26	0/2/2/2
3	5BU	D	301	-	-	0/6/26/26	0/2/2/2
2	FAD	D	302	-	-	0/30/50/50	0/6/6/6

The worst 5 of 62 bond length outliers are listed below:

Mol	Chain	Res	Type	Atoms	Z	Observed(Å)	Ideal(Å)
2	A	301	FAD	C1'-N10	-4.71	1.43	1.48
2	D	302	FAD	PA-O1A	-3.11	1.39	1.51
2	D	302	FAD	C2-N1	-2.96	1.32	1.38
2	D	302	FAD	C10-N10	-2.67	1.36	1.39
3	D	301	5BU	P-OP2	-2.62	1.45	1.54

The worst 5 of 74 bond angle outliers are listed below:

Mol	Chain	Res	Type	Atoms	Z	Observed(°)	Ideal(°)
2	C	301	FAD	N3A-C2A-N1A	-9.53	121.39	128.87
2	B	302	FAD	N3A-C2A-N1A	-9.08	121.74	128.87
3	D	301	5BU	C5-C4-N3	-8.98	114.41	124.00
2	A	301	FAD	N3A-C2A-N1A	-8.91	121.87	128.87
3	B	301	5BU	C5-C4-N3	-8.38	115.05	124.00

There are no chirality outliers.

There are no torsion outliers.

There are no ring outliers.

4 monomers are involved in 8 short contacts:

Mol	Chain	Res	Type	Clashes	Symm-Clashes
3	A	302	5BU	2	0
3	B	301	5BU	2	0
3	C	302	5BU	2	0
3	D	301	5BU	2	0

5.7 Other polymers [i](#)

There are no such residues in this entry.

5.8 Polymer linkage issues [i](#)

There are no chain breaks in this entry.

6 Fit of model and data [i](#)

6.1 Protein, DNA and RNA chains [i](#)

In the following table, the column labelled ‘#RSRZ> 2’ contains the number (and percentage) of RSRZ outliers, followed by percent RSRZ outliers for the chain as percentile scores relative to all X-ray entries and entries of similar resolution. The OWAB column contains the minimum, median, 95th percentile and maximum values of the occupancy-weighted average B-factor per residue. The column labelled ‘Q< 0.9’ lists the number of (and percentage) of residues with an average occupancy less than 0.9.

Mol	Chain	Analysed	<RSRZ>	#RSRZ>2	OWAB(Å ²)	Q<0.9
1	A	226/239 (94%)	0.04	19 (8%) 14 16	7, 16, 43, 56	0
1	B	227/239 (94%)	-0.02	15 (6%) 22 27	7, 16, 41, 50	0
1	C	223/239 (93%)	-0.12	7 (3%) 52 58	6, 15, 34, 50	0
1	D	225/239 (94%)	-0.01	14 (6%) 24 29	8, 16, 39, 59	0
All	All	901/956 (94%)	-0.03	55 (6%) 25 29	6, 16, 40, 59	0

The worst 5 of 55 RSRZ outliers are listed below:

Mol	Chain	Res	Type	RSRZ
1	D	46	GLY	6.6
1	A	35	ALA	5.7
1	D	45	ASP	5.7
1	A	119	GLY	5.7
1	A	4	PRO	5.5

6.2 Non-standard residues in protein, DNA, RNA chains [i](#)

There are no non-standard protein/DNA/RNA residues in this entry.

6.3 Carbohydrates [i](#)

There are no carbohydrates in this entry.

6.4 Ligands [i](#)

In the following table, the Atoms column lists the number of modelled atoms in the group and the number defined in the chemical component dictionary. LLDF column lists the quality of electron density of the group with respect to its neighbouring residues in protein, DNA or RNA chains. The B-factors column lists the minimum, median, 95th percentile and maximum values of B factors

of atoms in the group. The column labelled 'Q< 0.9' lists the number of atoms with occupancy less than 0.9.

Mol	Type	Chain	Res	Atoms	RSCC	RSR	LLDF	B-factors(\AA^2)	Q<0.9
2	FAD	A	301	53/53	0.98	0.10	-0.04	6,11,15,17	0
2	FAD	C	301	53/53	0.98	0.09	-0.09	7,10,14,14	0
2	FAD	B	302	53/53	0.98	0.09	-0.14	7,11,16,20	0
2	FAD	D	302	53/53	0.99	0.08	-0.43	7,9,15,20	0
3	5BU	D	301	22/22	0.98	0.07	-0.66	7,12,15,17	0
3	5BU	B	301	22/22	0.99	0.07	-1.06	8,12,17,17	0
3	5BU	A	302	22/22	0.99	0.06	-1.11	9,11,16,17	0
3	5BU	C	302	22/22	0.99	0.06	-1.26	8,11,15,17	0

6.5 Other polymers [i](#)

There are no such residues in this entry.