



# Full wwPDB X-ray Structure Validation Report ⓘ

Jan 31, 2016 – 09:29 PM GMT

PDB ID : 1P6K  
Title : Rat neuronal NOS D597N mutant heme domain with L-N(omega)-nitroarginine-2,4-L-diaminobutyric amide bound  
Authors : Flinspach, M.L.; Li, H.; Jamal, J.; Yang, W.; Huang, H.; Hah, J.-M.; Gomez-Vidal, J.A.; Litzinger, E.A.; Silverman, R.B.; Poulos, T.L.  
Deposited on : 2003-04-29  
Resolution : 1.78 Å(reported)

This is a Full wwPDB X-ray Structure Validation Report for a publicly released PDB entry.  
We welcome your comments at [validation@mail.wwpdb.org](mailto:validation@mail.wwpdb.org)  
A user guide is available at  
<http://wwpdb.org/validation/2016/XrayValidationReportHelp>  
with specific help available everywhere you see the ⓘ symbol.

---

The following versions of software and data (see [references ⓘ](#)) were used in the production of this report:

MolProbity : 4.02b-467  
Mogul : 1.7 (RC4), CSD as536be (2015)  
Xtriage (Phenix) : 1.9-1692  
EDS : rb-20026688  
Percentile statistics : 20151230.v01 (using entries in the PDB archive December 30th 2015)  
Refmac : 5.8.0135  
CCP4 : 6.5.0  
Ideal geometry (proteins) : Engh & Huber (2001)  
Ideal geometry (DNA, RNA) : Parkinson et al. (1996)  
Validation Pipeline (wwPDB-VP) : trunk26865

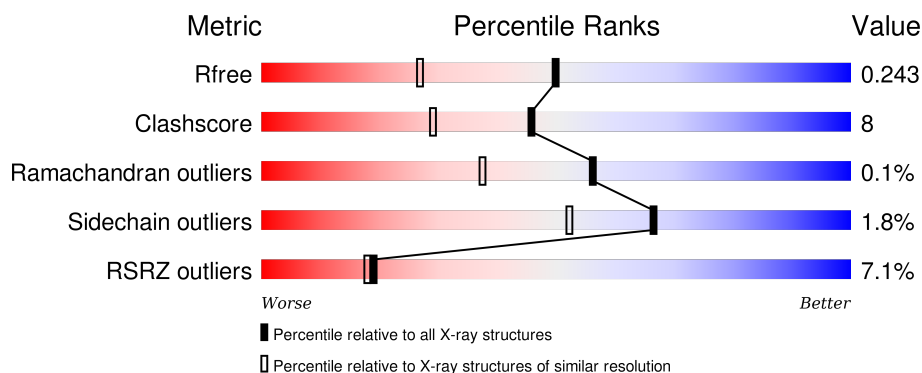
# 1 Overall quality at a glance

The following experimental techniques were used to determine the structure:

*X-RAY DIFFRACTION*

The reported resolution of this entry is 1.78 Å.

Percentile scores (ranging between 0-100) for global validation metrics of the entry are shown in the following graphic. The table shows the number of entries on which the scores are based.



Metric	Whole archive (#Entries)	Similar resolution (#Entries, resolution range(Å))
$R_{free}$	91344	6655 (1.80-1.76)
Clashscore	102246	7658 (1.80-1.76)
Ramachandran outliers	100387	7570 (1.80-1.76)
Sidechain outliers	100360	7569 (1.80-1.76)
RSRZ outliers	91569	6671 (1.80-1.76)

The table below summarises the geometric issues observed across the polymeric chains and their fit to the electron density. The red, orange, yellow and green segments on the lower bar indicate the fraction of residues that contain outliers for  $\geq 3$ , 2, 1 and 0 types of geometric quality criteria. A grey segment represents the fraction of residues that are not modelled. The numeric value for each fraction is indicated below the corresponding segment, with a dot representing fractions  $\leq 5\%$ . The upper red bar (where present) indicates the fraction of residues that have poor fit to the electron density. The numeric value is given above the bar.

Mol	Chain	Length	Quality of chain
1	A	421	
1	B	421	

The following table lists non-polymeric compounds, carbohydrate monomers and non-standard residues in protein, DNA, RNA chains that are outliers for geometric or electron-density-fit criteria:

Mol	Type	Chain	Res	Chirality	Geometry	Clashes	Electron density
2	MTL	A	870	-	-	-	X
3	ACT	A	860	-	-	-	X
7	DP1	A	790	-	-	-	X
7	DP1	B	791	-	-	-	X

## 2 Entry composition [i](#)

There are 8 unique types of molecules in this entry. The entry contains 7451 atoms, of which 0 are hydrogens and 0 are deuteriums.

In the tables below, the ZeroOcc column contains the number of atoms modelled with zero occupancy, the AltConf column contains the number of residues with at least one atom in alternate conformation and the Trace column contains the number of residues modelled with at most 2 atoms.

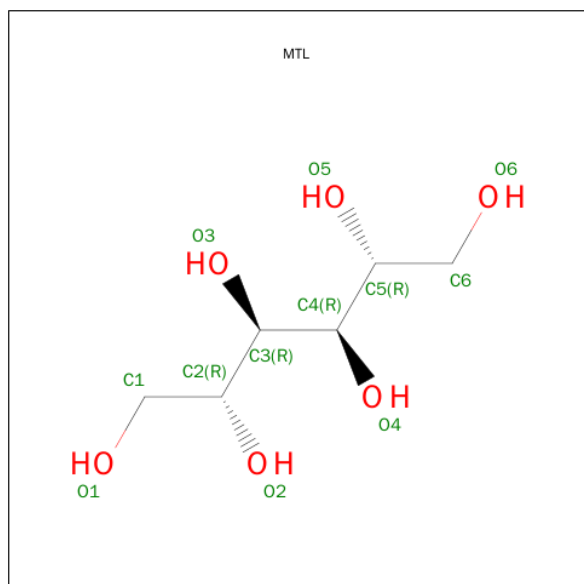
- Molecule 1 is a protein called Nitric-oxide synthase, brain.

Mol	Chain	Residues	Atoms					ZeroOcc	AltConf	Trace
1	A	407	Total	C	N	O	S	0	6	0
			3324	2124	570	608	22			
1	B	410	Total	C	N	O	S	0	9	0
			3357	2143	577	614	23			

There are 2 discrepancies between the modelled and reference sequences:

Chain	Residue	Modelled	Actual	Comment	Reference
A	597	ASN	ASP	ENGINEERED	UNP P29476
B	597	ASN	ASP	ENGINEERED	UNP P29476

- Molecule 2 is D-MANNITOL (three-letter code: MTL) (formula: C<sub>6</sub>H<sub>14</sub>O<sub>6</sub>).



Mol	Chain	Residues	Atoms			ZeroOcc	AltConf
2	A	1	Total	C	O	0	0
			12	6	6		

*Continued on next page...*

*Continued from previous page...*

Mol	Chain	Residues	Atoms			ZeroOcc	AltConf
2	B	1	Total	C	O	0	0
			12	6	6		

- Molecule 3 is ACETATE ION (three-letter code: ACT) (formula:  $C_2H_3O_2$ ).



Mol	Chain	Residues	Atoms			ZeroOcc	AltConf
3	A	1	Total	C	O	0	0
			4	2	2		
3	B	1	Total	C	O	0	0
			4	2	2		

- Molecule 4 is ZINC ION (three-letter code: ZN) (formula: Zn).

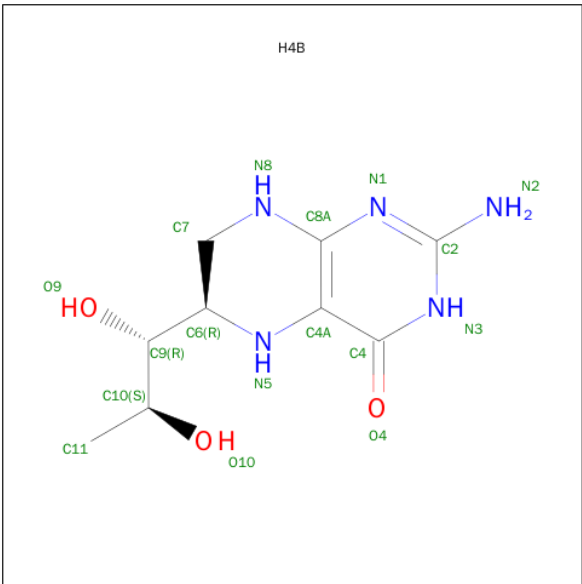
Mol	Chain	Residues	Atoms		ZeroOcc	AltConf
4	A	1	Total	Zn	0	0
			1	1		

- Molecule 5 is PROTOPORPHYRIN IX CONTAINING FE (three-letter code: HEM) (formula:  $C_{34}H_{32}FeN_4O_4$ ).



Mol	Chain	Residues	Atoms					ZeroOcc	AltConf
5	A	1	Total	C	Fe	N	O	0	0
			43	34	1	4	4		
5	B	1	Total	C	Fe	N	O	0	0
			43	34	1	4	4		

- Molecule 6 is 5,6,7,8-TETRAHYDROBIOPTERIN (three-letter code: H4B) (formula:  $C_9H_{15}N_5O_3$ ).



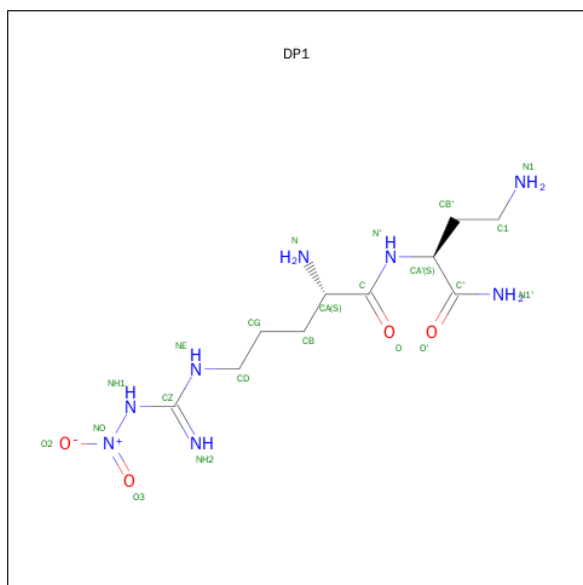
Mol	Chain	Residues	Atoms				ZeroOcc	AltConf
6	A	1	Total	C	N	O	0	0
			17	9	5	3		

Continued on next page...

Continued from previous page...

Mol	Chain	Residues	Atoms				ZeroOcc	AltConf
6	B	1	Total	C	N	O	0	0
			17	9	5	3		

- Molecule 7 is L-N(OMEGA)-NITROARGININE-2,4-L-DIAMINO BUTYRIC AMIDE (three-letter code: DP1) (formula: C<sub>10</sub>H<sub>22</sub>N<sub>8</sub>O<sub>4</sub>).



Mol	Chain	Residues	Atoms				ZeroOcc	AltConf
7	A	1	Total	C	N	O	0	0
			22	10	8	4		
7	B	1	Total	C	N	O	0	0
			22	10	8	4		

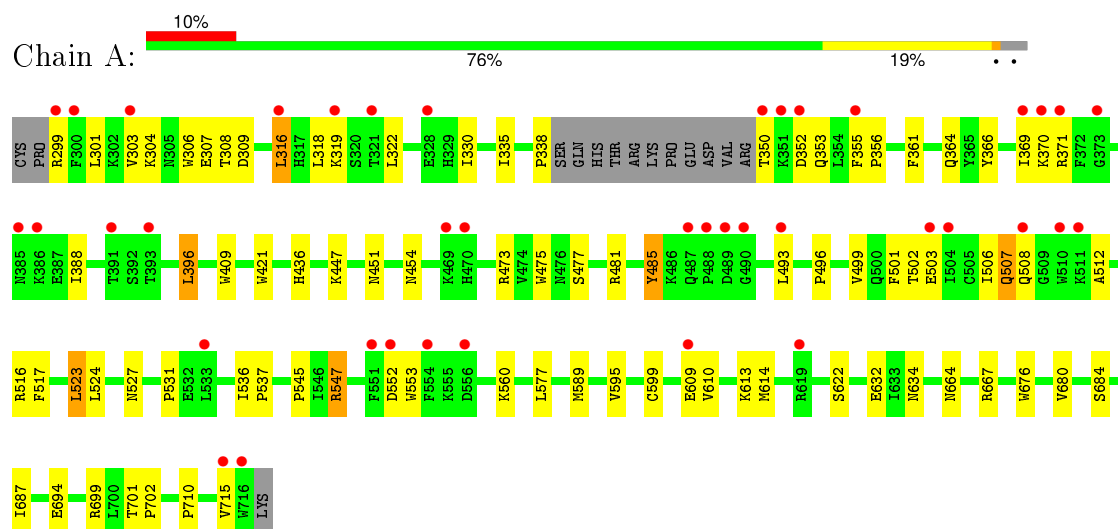
- Molecule 8 is water.

Mol	Chain	Residues	Atoms		ZeroOcc	AltConf
8	A	259	Total	O	0	0
			259	259		
8	B	314	Total	O	0	0
			314	314		

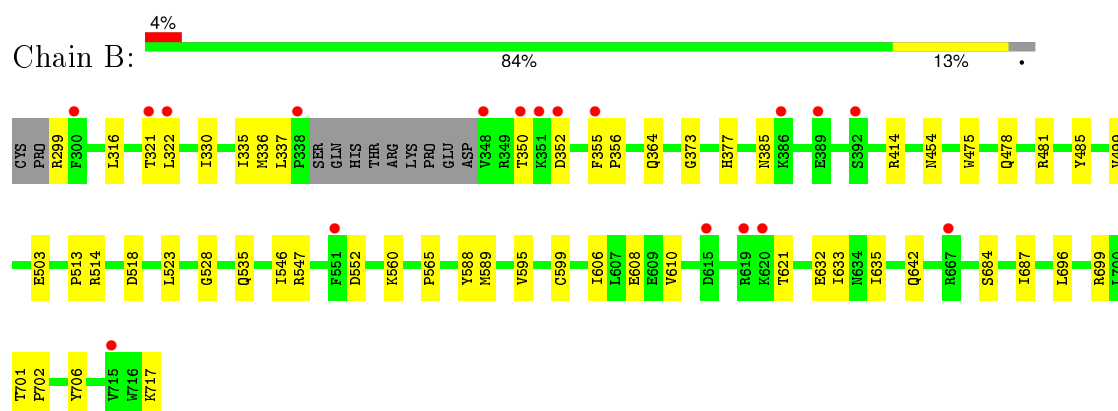
### 3 Residue-property plots [i](#)

These plots are drawn for all protein, RNA and DNA chains in the entry. The first graphic for a chain summarises the proportions of errors displayed in the second graphic. The second graphic shows the sequence view annotated by issues in geometry and electron density. Residues are color-coded according to the number of geometric quality criteria for which they contain at least one outlier: green = 0, yellow = 1, orange = 2 and red = 3 or more. A red dot above a residue indicates a poor fit to the electron density ( $RSRZ > 2$ ). Stretches of 2 or more consecutive residues without any outlier are shown as a green connector. Residues present in the sample, but not in the model, are shown in grey.

#### • Molecule 1: Nitric-oxide synthase, brain



#### • Molecule 1: Nitric-oxide synthase, brain





## 4 Data and refinement statistics

Property	Value	Source
Space group	P 21 21 21	Depositor
Cell constants a, b, c, $\alpha$ , $\beta$ , $\gamma$	51.77Å 109.74Å 164.39Å 90.00° 90.00° 90.00°	Depositor
Resolution (Å)	49.38 – 1.78 49.38 – 1.71	Depositor EDS
% Data completeness (in resolution range)	99.0 (49.38-1.78) 97.6 (49.38-1.71)	Depositor EDS
$R_{merge}$	0.06	Depositor
$R_{sym}$	0.06	Depositor
$\langle I/\sigma(I) \rangle$ <sup>1</sup>	1.37 (at 1.71Å)	Xtriage
Refinement program	CNS 1.1	Depositor
R, $R_{free}$	0.225 , 0.250 0.218 , 0.243	Depositor DCC
$R_{free}$ test set	4500 reflections (5.28%)	DCC
Wilson B-factor (Å <sup>2</sup> )	26.9	Xtriage
Anisotropy	0.647	Xtriage
Bulk solvent $k_{sol}$ (e/Å <sup>3</sup> ), $B_{sol}$ (Å <sup>2</sup> )	0.38 , 46.5	EDS
Estimated twinning fraction	No twinning to report.	Xtriage
L-test for twinning <sup>2</sup>	$\langle  L  \rangle = 0.49$ , $\langle L^2 \rangle = 0.32$	Xtriage
Outliers	0 of 99418 reflections	Xtriage
$F_o, F_c$ correlation	0.96	EDS
Total number of atoms	7451	wwPDB-VP
Average B, all atoms (Å <sup>2</sup> )	37.0	wwPDB-VP

Xtriage's analysis on translational NCS is as follows: *The largest off-origin peak in the Patterson function is 5.82% of the height of the origin peak. No significant pseudotranslation is detected.*

<sup>1</sup>Intensities estimated from amplitudes.

<sup>2</sup>Theoretical values of  $\langle |L| \rangle$ ,  $\langle L^2 \rangle$  for acentric reflections are 0.5, 0.375 respectively for untwinned datasets, and 0.333, 0.2 for perfectly twinned datasets.

## 5 Model quality [i](#)

### 5.1 Standard geometry [i](#)

Bond lengths and bond angles in the following residue types are not validated in this section: ZN, H4B, DP1, MTL, ACT, HEM

The Z score for a bond length (or angle) is the number of standard deviations the observed value is removed from the expected value. A bond length (or angle) with  $|Z| > 5$  is considered an outlier worth inspection. RMSZ is the root-mean-square of all Z scores of the bond lengths (or angles).

Mol	Chain	Bond lengths		Bond angles	
		RMSZ	$\# Z  > 5$	RMSZ	$\# Z  > 5$
1	A	0.41	0/3447	0.64	1/4675 (0.0%)
1	B	0.43	0/3495	0.66	1/4736 (0.0%)
All	All	0.42	0/6942	0.65	2/9411 (0.0%)

There are no bond length outliers.

All (2) bond angle outliers are listed below:

Mol	Chain	Res	Type	Atoms	Z	Observed(°)	Ideal(°)
1	B	589	MET	N-CA-C	-5.58	95.93	111.00
1	A	589	MET	N-CA-C	-5.49	96.18	111.00

There are no chirality outliers.

There are no planarity outliers.

### 5.2 Too-close contacts [i](#)

In the following table, the Non-H and H(model) columns list the number of non-hydrogen atoms and hydrogen atoms in the chain respectively. The H(added) column lists the number of hydrogen atoms added and optimized by MolProbity. The Clashes column lists the number of clashes within the asymmetric unit, whereas Symm-Clashes lists symmetry related clashes.

Mol	Chain	Non-H	H(model)	H(added)	Clashes	Symm-Clashes
1	A	3324	0	3237	67	0
1	B	3357	0	3279	39	0
2	A	12	0	14	1	0
2	B	12	0	14	0	0
3	A	4	0	3	0	0
3	B	4	0	3	0	0
4	A	1	0	0	0	0

*Continued on next page...*

*Continued from previous page...*

Mol	Chain	Non-H	H(model)	H(added)	Clashes	Symm-Clashes
5	A	43	0	30	4	0
5	B	43	0	30	0	0
6	A	17	0	15	0	0
6	B	17	0	15	0	0
7	A	22	0	21	2	0
7	B	22	0	21	1	0
8	A	259	0	0	7	0
8	B	314	0	0	5	0
All	All	7451	0	6682	105	0

The all-atom clashscore is defined as the number of clashes found per 1000 atoms (including hydrogen atoms). The all-atom clashscore for this structure is 8.

All (105) close contacts within the same asymmetric unit are listed below, sorted by their clash magnitude.

Atom-1	Atom-2	Interatomic distance (Å)	Clash overlap (Å)
1:B:373:GLY:H	1:B:377:HIS:HD2	1.11	0.92
1:A:523:LEU:HD22	1:A:531:PRO:HB2	1.51	0.91
1:A:396:LEU:HD22	1:A:577:LEU:HD12	1.54	0.86
1:A:350:THR:HB	1:A:353:GLN:HG3	1.62	0.82
1:B:373:GLY:H	1:B:377:HIS:CD2	2.01	0.74
1:A:307:GLU:HG3	8:B:941:HOH:O	1.88	0.74
1:A:396:LEU:CD2	1:A:577:LEU:HD12	2.21	0.70
1:A:503:GLU:HG3	8:A:1043:HOH:O	1.90	0.70
1:B:350:THR:HG22	1:B:352:ASP:H	1.55	0.70
1:A:350:THR:HG22	1:A:352:ASP:H	1.57	0.69
1:A:506:ILE:O	1:A:508:GLN:N	2.27	0.67
1:A:609:GLU:HG3	8:A:995:HOH:O	1.95	0.66
1:A:303:VAL:HG13	1:A:694:GLU:HB2	1.79	0.65
1:A:506:ILE:C	1:A:508:GLN:H	2.02	0.63
1:B:684:SER:HB3	1:B:687:ILE:HD11	1.81	0.61
1:A:299:ARG:HA	8:A:1045:HOH:O	2.00	0.61
1:B:513:PRO:HG2	1:B:518:ASP:CG	2.22	0.60
1:A:502:THR:O	1:A:506:ILE:HG12	2.02	0.60
1:A:361:PHE:O	1:A:364:GLN:HG2	2.02	0.59
1:B:621:THR:HG22	8:B:1165:HOH:O	2.03	0.59
1:B:355:PHE:N	1:B:356:PRO:HD2	2.18	0.59
1:B:322:LEU:HB2	1:B:699:ARG:HB2	1.85	0.59
1:A:545:PRO:HD3	8:A:1080:HOH:O	2.03	0.59
1:A:304:LYS:O	1:A:694:GLU:HG3	2.03	0.58
1:A:350:THR:HB	1:A:353:GLN:CG	2.33	0.57

*Continued on next page...*

*Continued from previous page...*

Atom-1	Atom-2	Interatomic distance (Å)	Clash overlap (Å)
1:A:614:MET:CE	1:A:632:GLU:HG3	2.34	0.57
1:A:664:ASN:OD1	1:A:667:ARG:NH2	2.38	0.56
1:A:684:SER:HB3	1:A:687:ILE:HD11	1.89	0.55
1:A:481[A]:ARG:NH2	7:A:790:DP1:O	2.40	0.55
1:A:306:TRP:NE1	1:B:336[B]:MET:HG3	2.22	0.55
5:A:750:HEM:HMC1	5:A:750:HEM:HBC2	1.89	0.54
1:A:473:ARG:NH2	1:A:710:PRO:HD3	2.23	0.54
1:B:684:SER:HB3	1:B:687:ILE:CG1	2.38	0.54
1:B:336[A]:MET:HG3	1:B:337:LEU:CD2	2.38	0.54
1:B:478:GLN:HB2	1:B:481[A]:ARG:HG3	1.90	0.53
1:A:545:PRO:HG2	1:A:547:ARG:NH1	2.24	0.52
1:B:546:ILE:HG12	1:B:560:LYS:HA	1.91	0.52
1:B:481[A]:ARG:NH2	7:B:791:DP1:O	2.44	0.51
1:B:485:TYR:CE1	1:B:514:ARG:HA	2.45	0.51
1:A:477[B]:SER:OG	1:A:481[B]:ARG:HD2	2.10	0.50
1:A:506:ILE:C	1:A:508:GLN:N	2.60	0.50
1:A:396:LEU:HD22	1:A:577:LEU:CD1	2.36	0.50
1:A:322:LEU:HD13	1:A:699:ARG:NH2	2.27	0.50
1:B:608:GLU:HG3	8:B:989:HOH:O	2.11	0.49
1:A:475:TRP:HB2	1:A:523:LEU:HB3	1.94	0.49
1:B:610:VAL:HG21	1:B:633:ILE:HD11	1.94	0.49
1:A:694:GLU:HB3	1:B:335:ILE:HD13	1.94	0.49
1:A:303:VAL:CG1	1:A:694:GLU:O	2.61	0.49
1:B:364:GLN:NE2	8:B:1140:HOH:O	2.46	0.48
1:A:355:PHE:N	1:A:356:PRO:HD2	2.28	0.48
1:A:595:VAL:HG23	1:A:634:ASN:HD21	1.79	0.48
1:A:501:PHE:HB2	2:A:870:MTL:H61	1.95	0.48
1:A:701:THR:HG23	8:A:994:HOH:O	2.13	0.48
1:A:516:ARG:HG2	1:A:517:PHE:CE1	2.48	0.48
1:A:684:SER:HB3	1:A:687:ILE:CG1	2.43	0.48
1:A:536:ILE:O	1:A:537:PRO:C	2.51	0.47
1:B:684:SER:HB3	1:B:687:ILE:CD1	2.43	0.47
1:A:299:ARG:HE	1:A:318:LEU:HD22	1.79	0.47
1:A:303:VAL:HG11	1:A:694:GLU:O	2.14	0.47
1:A:370:LYS:C	1:A:371:ARG:HG2	2.34	0.47
1:B:336[A]:MET:HG3	1:B:337:LEU:HD23	1.97	0.47
1:A:451:ASN:HB3	1:A:454:ASN:O	2.15	0.47
1:B:595:VAL:O	1:B:599:CYS:HB2	2.15	0.47
1:A:553:TRP:CE3	1:A:613:LYS:HD3	2.50	0.47
1:B:499:VAL:O	1:B:503:GLU:HG3	2.16	0.46
1:A:335:ILE:HB	1:A:338:PRO:HG3	1.97	0.46

*Continued on next page...*

*Continued from previous page...*

Atom-1	Atom-2	Interatomic distance (Å)	Clash overlap (Å)
1:A:316:LEU:HD23	1:A:319:LYS:HD2	1.97	0.46
1:A:436:HIS:HB2	8:A:1007:HOH:O	2.15	0.45
1:A:701:THR:HA	1:A:702:PRO:C	2.37	0.45
1:A:507:GLN:O	1:A:507:GLN:HG2	2.17	0.45
1:A:614:MET:HE1	1:A:632:GLU:HG3	1.98	0.45
1:B:355:PHE:CE1	1:B:385:ASN:HB2	2.52	0.45
1:B:475:TRP:HB2	1:B:523:LEU:HB3	1.99	0.45
1:A:715:VAL:O	1:A:715:VAL:HG23	2.16	0.45
1:A:447:LYS:HD2	8:A:1145:HOH:O	2.17	0.45
1:A:684:SER:HB3	1:A:687:ILE:CD1	2.47	0.44
1:B:606:ILE:HD11	1:B:633:ILE:HD13	1.98	0.44
1:A:301:LEU:CD1	1:B:330:ILE:HD13	2.47	0.44
1:A:524:LEU:O	1:A:531:PRO:HA	2.18	0.44
1:A:409:TRP:CE3	1:A:421:TRP:HA	2.52	0.44
1:B:478:GLN:HB2	1:B:481[B]:ARG:CG	2.47	0.43
1:B:485:TYR:CZ	1:B:514:ARG:HA	2.54	0.43
1:B:528:GLY:O	1:B:717:LYS:HE2	2.19	0.43
1:B:565:PRO:HB3	1:B:588:TYR:CZ	2.54	0.42
1:B:321:THR:HG21	8:B:1063:HOH:O	2.19	0.42
5:A:750:HEM:CMC	5:A:750:HEM:HBC2	2.49	0.42
1:A:308:THR:O	1:A:309:ASP:HB2	2.19	0.42
1:A:684:SER:HB3	1:A:687:ILE:HG12	2.00	0.42
1:B:701:THR:HA	1:B:702:PRO:C	2.40	0.42
1:A:366:TYR:HA	1:A:369:ILE:HG12	2.02	0.42
1:B:299:ARG:HB3	1:B:299:ARG:HH11	1.85	0.42
5:A:750:HEM:HBB2	5:A:750:HEM:HHC	2.00	0.42
1:A:622:SER:CB	1:B:642:GLN:HE22	2.33	0.42
1:A:517:PHE:HB2	1:A:560:LYS:HE2	2.01	0.42
5:A:750:HEM:O2A	7:A:790:DP1:HA	2.19	0.42
1:A:496:PRO:HA	1:A:499:VAL:HG23	2.01	0.42
1:B:632:GLU:HA	1:B:635:ILE:HD12	2.01	0.41
1:A:595:VAL:O	1:A:599:CYS:HB2	2.20	0.41
1:A:676:TRP:CZ2	1:A:680:VAL:HG21	2.56	0.41
1:A:330:ILE:HD11	1:B:696:LEU:HB3	2.02	0.41
1:A:355:PHE:HD1	1:A:388:ILE:HD12	1.86	0.41
1:A:610:VAL:O	1:A:614:MET:HG3	2.21	0.40
1:B:355:PHE:N	1:B:356:PRO:CD	2.84	0.40
1:B:414:ARG:NH1	1:B:706:TYR:OH	2.53	0.40
1:A:485:TYR:CE2	1:A:512:ALA:HB1	2.56	0.40

There are no symmetry-related clashes.

## 5.3 Torsion angles [i](#)

### 5.3.1 Protein backbone [i](#)

In the following table, the Percentiles column shows the percent Ramachandran outliers of the chain as a percentile score with respect to all X-ray entries followed by that with respect to entries of similar resolution.

The Analysed column shows the number of residues for which the backbone conformation was analysed, and the total number of residues.

Mol	Chain	Analysed	Favoured	Allowed	Outliers	Percentiles	
1	A	409/421 (97%)	388 (95%)	20 (5%)	1 (0%)	52	34
1	B	415/421 (99%)	404 (97%)	11 (3%)	0	100	100
All	All	824/842 (98%)	792 (96%)	31 (4%)	1 (0%)	56	37

All (1) Ramachandran outliers are listed below:

Mol	Chain	Res	Type
1	A	507	GLN

### 5.3.2 Protein sidechains [i](#)

In the following table, the Percentiles column shows the percent sidechain outliers of the chain as a percentile score with respect to all X-ray entries followed by that with respect to entries of similar resolution.

The Analysed column shows the number of residues for which the sidechain conformation was analysed, and the total number of residues.

Mol	Chain	Analysed	Rotameric	Outliers	Percentiles	
1	A	369/377 (98%)	361 (98%)	8 (2%)	60	42
1	B	375/377 (100%)	370 (99%)	5 (1%)	76	66
All	All	744/754 (99%)	731 (98%)	13 (2%)	66	54

All (13) residues with a non-rotameric sidechain are listed below:

Mol	Chain	Res	Type
1	A	316	LEU
1	A	396	LEU
1	A	485	TYR
1	A	493	LEU
1	A	523	LEU

*Continued on next page...*

*Continued from previous page...*

Mol	Chain	Res	Type
1	A	527	ASN
1	A	547	ARG
1	A	552	ASP
1	B	316	LEU
1	B	454	ASN
1	B	535	GLN
1	B	547	ARG
1	B	552	ASP

Some sidechains can be flipped to improve hydrogen bonding and reduce clashes. All (17) such sidechains are listed below:

Mol	Chain	Res	Type
1	A	451	ASN
1	A	454	ASN
1	A	500	GLN
1	A	508	GLN
1	A	634	ASN
1	A	697	ASN
1	B	364	GLN
1	B	377	HIS
1	B	425	GLN
1	B	451	ASN
1	B	454	ASN
1	B	507	GLN
1	B	527	ASN
1	B	535	GLN
1	B	634	ASN
1	B	642	GLN
1	B	697	ASN

### 5.3.3 RNA ⓘ

There are no RNA molecules in this entry.

## 5.4 Non-standard residues in protein, DNA, RNA chains ⓘ

There are no non-standard protein/DNA/RNA residues in this entry.

## 5.5 Carbohydrates ⓘ

There are no carbohydrates in this entry.

## 5.6 Ligand geometry ⓘ

Of 11 ligands modelled in this entry, 1 is monoatomic - leaving 10 for Mogul analysis.

In the following table, the Counts columns list the number of bonds (or angles) for which Mogul statistics could be retrieved, the number of bonds (or angles) that are observed in the model and the number of bonds (or angles) that are defined in the chemical component dictionary. The Link column lists molecule types, if any, to which the group is linked. The Z score for a bond length (or angle) is the number of standard deviations the observed value is removed from the expected value. A bond length (or angle) with  $|Z| > 2$  is considered an outlier worth inspection. RMSZ is the root-mean-square of all Z scores of the bond lengths (or angles).

Mol	Type	Chain	Res	Link	Bond lengths			Bond angles		
					Counts	RMSZ	# Z  > 2	Counts	RMSZ	# Z  > 2
5	HEM	A	750	1	30,50,50	2.64	11 (36%)	24,82,82	2.45	11 (45%)
6	H4B	A	760	-	13,18,18	2.32	3 (23%)	11,26,26	3.99	6 (54%)
7	DP1	A	790	-	15,21,21	0.65	0	17,26,26	0.82	0
3	ACT	A	860	-	1,3,3	2.47	1 (100%)	0,3,3	0.00	-
2	MTL	A	870	-	11,11,11	1.03	0	14,14,14	0.71	0
5	HEM	B	750	1	30,50,50	2.17	9 (30%)	24,82,82	2.35	8 (33%)
6	H4B	B	761	-	13,18,18	2.17	3 (23%)	11,26,26	4.13	6 (54%)
7	DP1	B	791	-	15,21,21	0.67	0	17,26,26	0.88	0
3	ACT	B	861	-	1,3,3	2.28	1 (100%)	0,3,3	0.00	-
2	MTL	B	871	-	11,11,11	0.82	0	14,14,14	0.74	0

In the following table, the Chirals column lists the number of chiral outliers, the number of chiral centers analysed, the number of these observed in the model and the number defined in the chemical component dictionary. Similar counts are reported in the Torsion and Rings columns. '-' means no outliers of that kind were identified.

Mol	Type	Chain	Res	Link	Chirals	Torsions	Rings
5	HEM	A	750	1	-	0/10/54/54	0/0/8/8
6	H4B	A	760	-	-	0/8/17/17	0/2/2/2
7	DP1	A	790	-	-	0/20/26/26	0/0/0/0
3	ACT	A	860	-	-	0/0/0/0	0/0/0/0
2	MTL	A	870	-	-	0/16/16/16	0/0/0/0
5	HEM	B	750	1	-	0/10/54/54	0/0/8/8
6	H4B	B	761	-	-	0/8/17/17	0/2/2/2
7	DP1	B	791	-	-	0/20/26/26	0/0/0/0

*Continued on next page...*



*Continued from previous page...*

Mol	Type	Chain	Res	Link	Chirals	Torsions	Rings
3	ACT	B	861	-	-	0/0/0/0	0/0/0/0
2	MTL	B	871	-	-	0/16/16/16	0/0/0/0

All (28) bond length outliers are listed below:

Mol	Chain	Res	Type	Atoms	Z	Observed(Å)	Ideal(Å)
5	A	750	HEM	C2D-C3D	-6.39	1.35	1.54
5	A	750	HEM	C3C-CAC	-5.99	1.40	1.51
5	B	750	HEM	C2D-C3D	-5.50	1.38	1.54
5	A	750	HEM	C3D-C4D	-5.31	1.44	1.51
5	A	750	HEM	C3B-CAB	-4.82	1.42	1.51
5	B	750	HEM	C3C-CAC	-4.50	1.42	1.51
5	B	750	HEM	C3B-CAB	-4.36	1.43	1.51
5	B	750	HEM	C3B-C4B	-4.18	1.48	1.51
5	B	750	HEM	C3D-C4D	-3.81	1.46	1.51
5	A	750	HEM	C2C-C1C	-3.47	1.46	1.52
5	A	750	HEM	C3B-C4B	-3.32	1.48	1.51
5	B	750	HEM	C2C-C1C	-3.06	1.46	1.52
5	A	750	HEM	C2D-C1D	-2.50	1.43	1.51
5	B	750	HEM	C2B-C1B	-2.49	1.43	1.51
5	B	750	HEM	C2D-C1D	-2.26	1.44	1.51
5	B	750	HEM	C1C-NC	2.24	1.38	1.36
5	A	750	HEM	CHD-C4C	2.25	1.41	1.36
3	B	861	ACT	CH3-C	2.28	1.52	1.48
3	A	860	ACT	CH3-C	2.47	1.52	1.48
5	A	750	HEM	CHC-C1C	2.68	1.42	1.36
5	A	750	HEM	C4C-NC	2.90	1.39	1.36
6	B	761	H4B	C4A-N5	3.26	1.45	1.38
6	A	760	H4B	C6-N5	3.95	1.53	1.45
5	A	750	HEM	C1C-NC	4.06	1.41	1.36
6	A	760	H4B	C4A-N5	4.21	1.47	1.38
6	B	761	H4B	C6-N5	4.31	1.54	1.45
6	B	761	H4B	C4-N3	4.36	1.41	1.33
6	A	760	H4B	C4-N3	5.24	1.42	1.33

All (31) bond angle outliers are listed below:

Mol	Chain	Res	Type	Atoms	Z	Observed(°)	Ideal(°)
6	A	760	H4B	N3-C2-N1	-4.45	118.23	125.53
6	B	761	H4B	N3-C2-N1	-4.45	118.25	125.53
5	B	750	HEM	CBA-CAA-C2A	-3.38	106.47	112.53
5	A	750	HEM	CBA-CAA-C2A	-2.50	108.04	112.53

*Continued on next page...*

*Continued from previous page...*

Mol	Chain	Res	Type	Atoms	Z	Observed(°)	Ideal(°)
5	A	750	HEM	CBD-CAD-C3D	-2.28	106.91	113.55
5	A	750	HEM	CAA-C2A-C1A	-2.16	124.66	127.01
5	A	750	HEM	CMA-C3A-C4A	-2.07	124.95	128.36
5	B	750	HEM	CMD-C2D-C3D	2.69	126.25	114.35
5	A	750	HEM	C2D-C3D-C4D	2.82	106.28	101.50
5	A	750	HEM	C3B-C4B-CHC	2.90	127.24	123.16
5	B	750	HEM	C2D-C3D-C4D	3.01	106.60	101.50
5	B	750	HEM	CMC-C2C-C3C	3.04	124.11	116.53
5	B	750	HEM	CAD-C3D-C4D	3.09	123.36	112.47
6	A	760	H4B	N2-C2-N1	3.18	122.47	117.20
5	A	750	HEM	CMD-C2D-C3D	3.31	128.98	114.35
6	B	761	H4B	C2-N1-C8A	3.31	121.99	114.54
6	B	761	H4B	N2-C2-N1	3.39	122.81	117.20
5	A	750	HEM	CAD-C3D-C4D	3.55	124.99	112.47
5	B	750	HEM	CMB-C2B-C3B	3.60	125.52	116.53
6	B	761	H4B	C4A-C8A-N8	3.65	122.73	118.43
6	A	760	H4B	C4A-C8A-N8	3.79	122.89	118.43
6	A	760	H4B	C2-N1-C8A	3.80	123.08	114.54
5	B	750	HEM	C3B-CAB-CBB	4.13	130.79	124.46
5	A	750	HEM	CMC-C2C-C3C	4.49	127.73	116.53
5	A	750	HEM	CMB-C2B-C3B	4.65	128.13	116.53
5	A	750	HEM	CAD-C3D-C2D	5.37	128.65	113.22
6	A	760	H4B	C4-N3-C2	5.76	123.94	115.94
5	B	750	HEM	CAD-C3D-C2D	5.82	129.96	113.22
6	B	761	H4B	C4-N3-C2	6.42	124.86	115.94
6	A	760	H4B	C4-C4A-C8A	8.93	122.64	114.56
6	B	761	H4B	C4-C4A-C8A	9.35	123.02	114.56

There are no chirality outliers.

There are no torsion outliers.

There are no ring outliers.

4 monomers are involved in 7 short contacts:

Mol	Chain	Res	Type	Clashes	Symm-Clashes
5	A	750	HEM	4	0
7	A	790	DP1	2	0
2	A	870	MTL	1	0
7	B	791	DP1	1	0

## 5.7 Other polymers [i](#)

There are no such residues in this entry.

## 5.8 Polymer linkage issues [i](#)

There are no chain breaks in this entry.

## 6 Fit of model and data ⓘ

### 6.1 Protein, DNA and RNA chains ⓘ

In the following table, the column labelled ‘#RSRZ> 2’ contains the number (and percentage) of RSRZ outliers, followed by percent RSRZ outliers for the chain as percentile scores relative to all X-ray entries and entries of similar resolution. The OWAB column contains the minimum, median, 95<sup>th</sup> percentile and maximum values of the occupancy-weighted average B-factor per residue. The column labelled ‘Q< 0.9’ lists the number of (and percentage) of residues with an average occupancy less than 0.9.

Mol	Chain	Analysed	<RSRZ>	#RSRZ>2	OWAB(Å <sup>2</sup> )	Q<0.9
1	A	407/421 (96%)	0.65	40 (9%) 10 9	24, 39, 59, 70	0
1	B	410/421 (97%)	0.39	18 (4%) 38 36	23, 33, 50, 66	0
All	All	817/842 (97%)	0.52	58 (7%) 19 18	23, 35, 56, 70	0

All (58) RSRZ outliers are listed below:

Mol	Chain	Res	Type	RSRZ
1	A	300	PHE	7.2
1	A	299	ARG	6.9
1	B	348	VAL	5.9
1	A	352	ASP	5.3
1	B	321	THR	5.0
1	A	488	PRO	4.7
1	B	352	ASP	4.6
1	A	355	PHE	4.3
1	A	321	THR	3.7
1	A	503	GLU	3.4
1	B	300	PHE	3.4
1	B	350	THR	3.4
1	B	351	LYS	3.4
1	A	391	THR	3.1
1	A	489	ASP	3.1
1	B	389	GLU	3.1
1	A	551	PHE	3.1
1	B	620	LYS	3.0
1	A	303	VAL	3.0
1	A	715	VAL	3.0
1	A	351	LYS	3.0
1	B	338	PRO	2.9
1	A	373	GLY	2.8
1	B	619	ARG	2.8

*Continued on next page...*

*Continued from previous page...*

Mol	Chain	Res	Type	RSRZ
1	B	355	PHE	2.7
1	A	469	LYS	2.7
1	A	619	ARG	2.6
1	A	328	GLU	2.6
1	A	716	TRP	2.6
1	A	552	ASP	2.6
1	B	615	ASP	2.5
1	A	386	LYS	2.5
1	A	487	GLN	2.5
1	A	554	PHE	2.5
1	A	556	ASP	2.5
1	B	667	ARG	2.5
1	A	370	LYS	2.4
1	A	490	GLY	2.3
1	A	319	LYS	2.3
1	B	551	PHE	2.3
1	A	510	TRP	2.3
1	B	386	LYS	2.3
1	A	385	ASN	2.3
1	A	350	THR	2.3
1	A	371	ARG	2.2
1	A	470	HIS	2.2
1	A	393	THR	2.1
1	A	609	GLU	2.1
1	B	322	LEU	2.1
1	A	369	ILE	2.1
1	A	504	ILE	2.1
1	B	392[A]	SER	2.1
1	B	715	VAL	2.1
1	A	508	GLN	2.1
1	A	533	LEU	2.1
1	A	493	LEU	2.1
1	A	511	LYS	2.0
1	A	316	LEU	2.0

## 6.2 Non-standard residues in protein, DNA, RNA chains ⓘ

There are no non-standard protein/DNA/RNA residues in this entry.

### 6.3 Carbohydrates [i](#)

There are no carbohydrates in this entry.

### 6.4 Ligands [i](#)

In the following table, the Atoms column lists the number of modelled atoms in the group and the number defined in the chemical component dictionary. LLDF column lists the quality of electron density of the group with respect to its neighbouring residues in protein, DNA or RNA chains. The B-factors column lists the minimum, median, 95<sup>th</sup> percentile and maximum values of B factors of atoms in the group. The column labelled 'Q< 0.9' lists the number of atoms with occupancy less than 0.9.

Mol	Type	Chain	Res	Atoms	RSCC	RSR	LLDF	B-factors(Å <sup>2</sup> )	Q<0.9
3	ACT	A	860	4/4	0.95	0.18	5.21	60,60,60,60	0
7	DP1	B	791	22/22	0.86	0.16	2.57	41,43,44,44	0
2	MTL	A	870	12/12	0.80	0.17	2.24	51,51,52,52	0
7	DP1	A	790	22/22	0.85	0.16	2.15	39,43,45,45	0
3	ACT	B	861	4/4	0.96	0.13	1.36	45,45,45,45	0
4	ZN	A	900	1/1	0.99	0.10	0.17	34,34,34,34	0
5	HEM	B	750	43/43	0.98	0.10	0.15	23,23,26,28	0
5	HEM	A	750	43/43	0.98	0.09	-0.68	25,26,27,27	0
2	MTL	B	871	12/12	0.92	0.09	-1.08	45,46,47,47	0
6	H4B	B	761	17/17	0.97	0.09	-1.19	24,25,27,27	0
6	H4B	A	760	17/17	0.96	0.09	-1.66	24,25,26,26	0

### 6.5 Other polymers [i](#)

There are no such residues in this entry.