



Full wwPDB X-ray Structure Validation Report ⓘ

Feb 1, 2016 – 07:34 PM GMT

PDB ID : 4P9D
Title : Crystal structure of dCMP deaminase from the cyanophage S-TIM5 in complex with dTMP and dTTP.
Authors : Marx, A.; Alian, A.
Deposited on : 2014-04-03
Resolution : 2.90 Å(reported)

This is a Full wwPDB X-ray Structure Validation Report for a publicly released PDB entry.
We welcome your comments at validation@mail.wwpdb.org
A user guide is available at
<http://wwpdb.org/validation/2016/XrayValidationReportHelp>
with specific help available everywhere you see the ⓘ symbol.

The following versions of software and data (see [references ⓘ](#)) were used in the production of this report:

MolProbity : 4.02b-467
Mogul : 1.7 (RC4), CSD as536be (2015)
Xtriage (Phenix) : 1.9-1692
EDS : rb-20026688
Percentile statistics : 20151230.v01 (using entries in the PDB archive December 30th 2015)
Refmac : 5.8.0135
CCP4 : 6.5.0
Ideal geometry (proteins) : Engh & Huber (2001)
Ideal geometry (DNA, RNA) : Parkinson et al. (1996)
Validation Pipeline (wwPDB-VP) : trunk26865

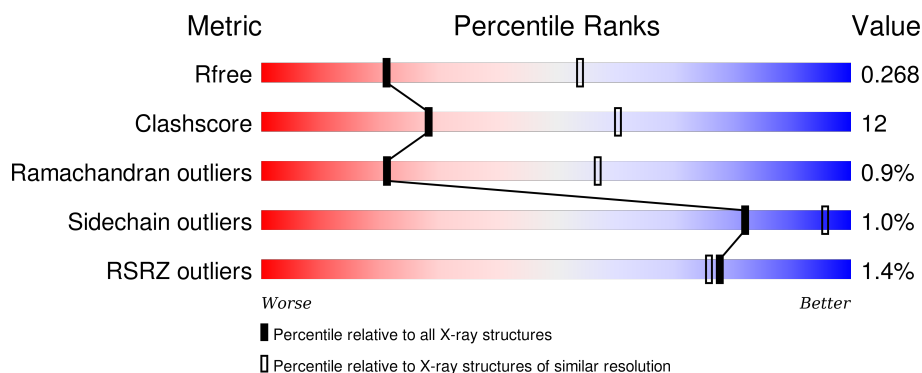
1 Overall quality at a glance

The following experimental techniques were used to determine the structure:

X-RAY DIFFRACTION

The reported resolution of this entry is 2.90 Å.

Percentile scores (ranging between 0-100) for global validation metrics of the entry are shown in the following graphic. The table shows the number of entries on which the scores are based.



Metric	Whole archive (#Entries)	Similar resolution (#Entries, resolution range(Å))
R_{free}	91344	1451 (2.90-2.90)
Clashscore	102246	1668 (2.90-2.90)
Ramachandran outliers	100387	1630 (2.90-2.90)
Sidechain outliers	100360	1632 (2.90-2.90)
RSRZ outliers	91569	1456 (2.90-2.90)

The table below summarises the geometric issues observed across the polymeric chains and their fit to the electron density. The red, orange, yellow and green segments on the lower bar indicate the fraction of residues that contain outliers for ≥ 3 , 2, 1 and 0 types of geometric quality criteria. A grey segment represents the fraction of residues that are not modelled. The numeric value for each fraction is indicated below the corresponding segment, with a dot representing fractions $\leq 5\%$. The upper red bar (where present) indicates the fraction of residues that have poor fit to the electron density. The numeric value is given above the bar.

Mol	Chain	Length	Quality of chain
1	A	138	<div> <div>2%</div> <div>76%</div> <div>20%</div> <div>..</div> </div>
1	B	138	<div> <div>%</div> <div>75%</div> <div>22%</div> <div>.</div> </div>
1	C	138	<div> <div>%</div> <div>78%</div> <div>20%</div> <div>.</div> </div>
1	D	138	<div> <div>%</div> <div>77%</div> <div>21%</div> <div>.</div> </div>
1	E	138	<div> <div>2%</div> <div>78%</div> <div>17%</div> <div>...</div> </div>

Continued on next page...

Continued from previous page...

Mol	Chain	Length	Quality of chain
1	F	138	<div> <div></div> <div>%</div> <div>78%</div> <div>17%</div> <div>• •</div> </div>

The following table lists non-polymeric compounds, carbohydrate monomers and non-standard residues in protein, DNA, RNA chains that are outliers for geometric or electron-density-fit criteria:

Mol	Type	Chain	Res	Chirality	Geometry	Clashes	Electron density
3	MG	C	202	-	-	-	X

2 Entry composition

There are 7 unique types of molecules in this entry. The entry contains 6599 atoms, of which 0 are hydrogens and 0 are deuteriums.

In the tables below, the ZeroOcc column contains the number of atoms modelled with zero occupancy, the AltConf column contains the number of residues with at least one atom in alternate conformation and the Trace column contains the number of residues modelled with at most 2 atoms.

- Molecule 1 is a protein called Deoxycytidylate deaminase.

Mol	Chain	Residues	Atoms					ZeroOcc	AltConf	Trace
1	A	135	Total	C	N	O	S	0	1	0
			1040	649	177	201	13			
1	B	135	Total	C	N	O	S	0	1	0
			1043	650	178	202	13			
1	C	136	Total	C	N	O	S	0	0	0
			1047	653	180	202	12			
1	D	135	Total	C	N	O	S	0	1	0
			1040	649	177	201	13			
1	E	135	Total	C	N	O	S	0	0	0
			1037	647	177	201	12			
1	F	135	Total	C	N	O	S	0	1	0
			1040	649	177	201	13			

There are 18 discrepancies between the modelled and reference sequences:

Chain	Residue	Modelled	Actual	Comment	Reference
A	-2	GLY	-	expression tag	UNP H6WFU3
A	-1	SER	-	expression tag	UNP H6WFU3
A	0	HIS	-	expression tag	UNP H6WFU3
B	-2	GLY	-	expression tag	UNP H6WFU3
B	-1	SER	-	expression tag	UNP H6WFU3
B	0	HIS	-	expression tag	UNP H6WFU3
C	-2	GLY	-	expression tag	UNP H6WFU3
C	-1	SER	-	expression tag	UNP H6WFU3
C	0	HIS	-	expression tag	UNP H6WFU3
D	-2	GLY	-	expression tag	UNP H6WFU3
D	-1	SER	-	expression tag	UNP H6WFU3
D	0	HIS	-	expression tag	UNP H6WFU3
E	-2	GLY	-	expression tag	UNP H6WFU3
E	-1	SER	-	expression tag	UNP H6WFU3
E	0	HIS	-	expression tag	UNP H6WFU3
F	-2	GLY	-	expression tag	UNP H6WFU3
F	-1	SER	-	expression tag	UNP H6WFU3

Continued on next page...

Continued from previous page...

Chain	Residue	Modelled	Actual	Comment	Reference
F	0	HIS	-	expression tag	UNP H6WFU3

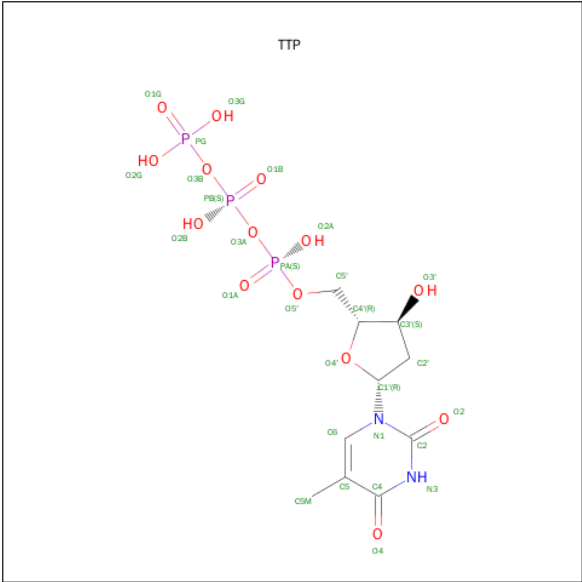
- Molecule 2 is ZINC ION (three-letter code: ZN) (formula: Zn).

Mol	Chain	Residues	Atoms	ZeroOcc	AltConf
2	D	1	Total Zn 1 1	0	0
2	E	1	Total Zn 1 1	0	0
2	B	1	Total Zn 1 1	0	0
2	C	1	Total Zn 1 1	0	0
2	A	1	Total Zn 1 1	0	0
2	F	1	Total Zn 1 1	0	0

- Molecule 3 is MAGNESIUM ION (three-letter code: MG) (formula: Mg).

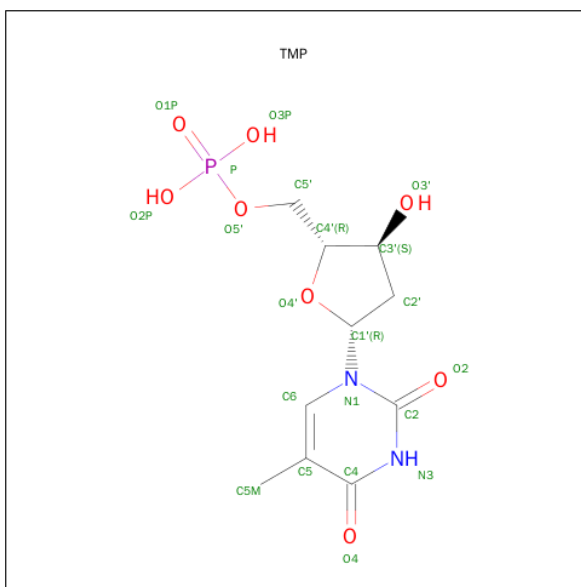
Mol	Chain	Residues	Atoms	ZeroOcc	AltConf
3	D	1	Total Mg 1 1	0	0
3	E	1	Total Mg 1 1	0	0
3	B	1	Total Mg 1 1	0	0
3	C	1	Total Mg 1 1	0	0
3	A	1	Total Mg 1 1	0	0
3	F	1	Total Mg 1 1	0	0

- Molecule 4 is THYMIDINE-5'-TRIPHOSPHATE (three-letter code: TTP) (formula: C₁₀H₁₇N₂O₁₄P₃).



Mol	Chain	Residues	Atoms					ZeroOcc	AltConf
4	A	1	Total	C	N	O	P	0	0
			29	10	2	14	3		
4	B	1	Total	C	N	O	P	0	0
			29	10	2	14	3		
4	C	1	Total	C	N	O	P	0	0
			29	10	2	14	3		
4	D	1	Total	C	N	O	P	0	0
			29	10	2	14	3		
4	E	1	Total	C	N	O	P	0	0
			29	10	2	14	3		
4	F	1	Total	C	N	O	P	0	0
			29	10	2	14	3		

- Molecule 5 is THYMIDINE-5'-PHOSPHATE (three-letter code: TMP) (formula: C₁₀H₁₅N₂O₈P).



Mol	Chain	Residues	Atoms					ZeroOcc	AltConf
5	A	1	Total	C	N	O	P	0	0
			21	10	2	8	1		
5	B	1	Total	C	N	O	P	0	0
			21	10	2	8	1		
5	C	1	Total	C	N	O	P	0	0
			21	10	2	8	1		
5	D	1	Total	C	N	O	P	0	0
			21	10	2	8	1		
5	E	1	Total	C	N	O	P	0	0
			21	10	2	8	1		
5	F	1	Total	C	N	O	P	0	0
			21	10	2	8	1		

- Molecule 6 is CHLORIDE ION (three-letter code: CL) (formula: Cl).

Mol	Chain	Residues	Atoms		ZeroOcc	AltConf
6	B	1	Total	Cl	0	0
			1	1		
6	A	1	Total	Cl	0	0
			1	1		
6	E	1	Total	Cl	0	0
			1	1		

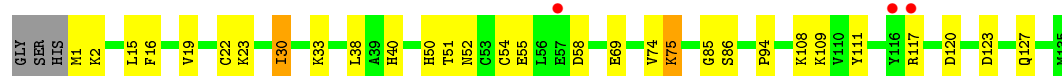
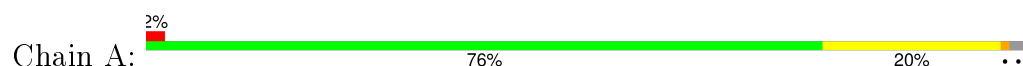
- Molecule 7 is water.

Mol	Chain	Residues	Atoms		ZeroOcc	AltConf
7	A	5	Total 5	O 5	0	0
7	B	7	Total 7	O 7	0	0
7	C	8	Total 8	O 8	0	0
7	D	6	Total 6	O 6	0	0
7	E	5	Total 5	O 5	0	0
7	F	6	Total 6	O 6	0	0

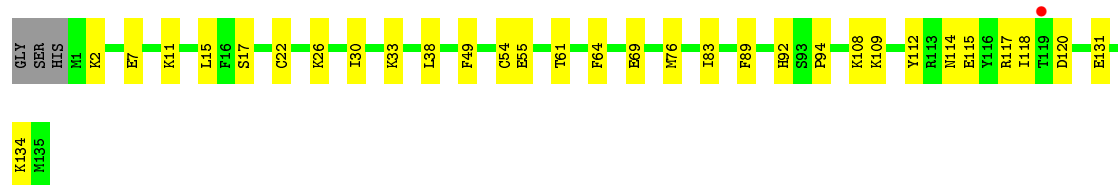
3 Residue-property plots [i](#)

These plots are drawn for all protein, RNA and DNA chains in the entry. The first graphic for a chain summarises the proportions of errors displayed in the second graphic. The second graphic shows the sequence view annotated by issues in geometry and electron density. Residues are color-coded according to the number of geometric quality criteria for which they contain at least one outlier: green = 0, yellow = 1, orange = 2 and red = 3 or more. A red dot above a residue indicates a poor fit to the electron density ($RSRZ > 2$). Stretches of 2 or more consecutive residues without any outlier are shown as a green connector. Residues present in the sample, but not in the model, are shown in grey.

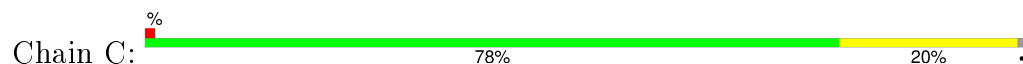
- Molecule 1: Deoxycytidylate deaminase



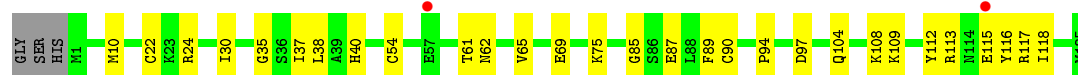
- Molecule 1: Deoxycytidylate deaminase



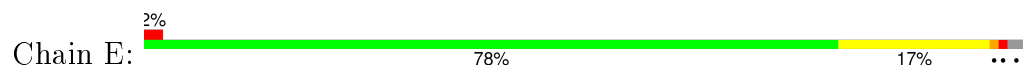
- Molecule 1: Deoxycytidylate deaminase



- Molecule 1: Deoxycytidylate deaminase



- Molecule 1: Deoxycytidylate deaminase



- Molecule 1: Deoxycytidylate deaminase

Chain F: 78% 17% 5%



4 Data and refinement statistics

Property	Value	Source
Space group	P 21 21 21	Depositor
Cell constants a, b, c, α , β , γ	75.90Å 79.02Å 126.52Å 90.00° 90.00° 90.00°	Depositor
Resolution (Å)	67.02 – 2.90 67.02 – 2.90	Depositor EDS
% Data completeness (in resolution range)	99.6 (67.02-2.90) 99.7 (67.02-2.90)	Depositor EDS
R_{merge}	0.09	Depositor
R_{sym}	(Not available)	Depositor
$\langle I/\sigma(I) \rangle$ ¹	3.43 (at 2.91Å)	Xtriage
Refinement program	PHENIX (phenix.refine: 1.8.4_1496)	Depositor
R, R_{free}	0.209 , 0.268 0.217 , 0.268	Depositor DCC
R_{free} test set	880 reflections (5.32%)	DCC
Wilson B-factor (Å ²)	49.6	Xtriage
Anisotropy	0.492	Xtriage
Bulk solvent k_{sol} (e/Å ³), B_{sol} (Å ²)	0.35 , 39.3	EDS
Estimated twinning fraction	0.012 for k,h,-l	Xtriage
L-test for twinning ²	$\langle L \rangle = 0.47$, $\langle L^2 \rangle = 0.30$	Xtriage
Outliers	1 of 17410 reflections (0.006%)	Xtriage
F_o, F_c correlation	0.92	EDS
Total number of atoms	6599	wwPDB-VP
Average B, all atoms (Å ²)	39.0	wwPDB-VP

Xtriage's analysis on translational NCS is as follows: *The largest off-origin peak in the Patterson function is 19.35% of the height of the origin peak. No significant pseudotranslation is detected.*

¹Intensities estimated from amplitudes.

²Theoretical values of $\langle |L| \rangle$, $\langle L^2 \rangle$ for acentric reflections are 0.5, 0.375 respectively for untwinned datasets, and 0.333, 0.2 for perfectly twinned datasets.

5 Model quality [i](#)

5.1 Standard geometry [i](#)

Bond lengths and bond angles in the following residue types are not validated in this section: TMP, ZN, TTP, MG, CL

The Z score for a bond length (or angle) is the number of standard deviations the observed value is removed from the expected value. A bond length (or angle) with $|Z| > 5$ is considered an outlier worth inspection. RMSZ is the root-mean-square of all Z scores of the bond lengths (or angles).

Mol	Chain	Bond lengths		Bond angles	
		RMSZ	$\# Z > 5$	RMSZ	$\# Z > 5$
1	A	0.33	0/1061	0.44	0/1426
1	B	0.26	0/1061	0.45	0/1426
1	C	0.30	0/1066	0.44	0/1433
1	D	0.30	0/1061	0.44	0/1426
1	E	0.33	0/1055	0.55	3/1418 (0.2%)
1	F	0.33	0/1061	0.50	1/1426 (0.1%)
All	All	0.31	0/6365	0.47	4/8555 (0.0%)

There are no bond length outliers.

All (4) bond angle outliers are listed below:

Mol	Chain	Res	Type	Atoms	Z	Observed($^{\circ}$)	Ideal($^{\circ}$)
1	E	57	GLU	O-C-N	5.89	132.12	122.70
1	E	57	GLU	CA-C-N	-5.84	104.34	117.20
1	F	115	GLU	O-C-N	-5.11	114.53	122.70
1	E	56	LEU	C-N-CA	-5.10	108.94	121.70

There are no chirality outliers.

There are no planarity outliers.

5.2 Too-close contacts [i](#)

In the following table, the Non-H and H(model) columns list the number of non-hydrogen atoms and hydrogen atoms in the chain respectively. The H(added) column lists the number of hydrogen atoms added and optimized by MolProbity. The Clashes column lists the number of clashes within the asymmetric unit, whereas Symm-Clashes lists symmetry related clashes.

Mol	Chain	Non-H	H(model)	H(added)	Clashes	Symm-Clashes
1	A	1040	0	1031	22	0

Continued on next page...

Continued from previous page...

Mol	Chain	Non-H	H(model)	H(added)	Clashes	Symm-Clashes
1	B	1043	0	1030	24	0
1	C	1047	0	1033	29	0
1	D	1040	0	1031	22	0
1	E	1037	0	1026	24	0
1	F	1040	0	1031	43	0
2	A	1	0	0	0	0
2	B	1	0	0	0	0
2	C	1	0	0	0	0
2	D	1	0	0	0	0
2	E	1	0	0	0	0
2	F	1	0	0	0	0
3	A	1	0	0	0	0
3	B	1	0	0	0	0
3	C	1	0	0	0	0
3	D	1	0	0	0	0
3	E	1	0	0	0	0
3	F	1	0	0	0	0
4	A	29	0	13	2	0
4	B	29	0	13	0	0
4	C	29	0	13	0	0
4	D	29	0	13	0	0
4	E	29	0	13	0	0
4	F	29	0	13	1	0
5	A	21	0	13	0	0
5	B	21	0	13	2	0
5	C	21	0	13	1	0
5	D	21	0	13	2	0
5	E	21	0	13	1	0
5	F	21	0	13	1	0
6	A	1	0	0	0	0
6	B	1	0	0	0	0
6	E	1	0	0	0	0
7	A	5	0	0	0	0
7	B	7	0	0	3	0
7	C	8	0	0	0	0
7	D	6	0	0	0	0
7	E	5	0	0	1	0
7	F	6	0	0	2	0
All	All	6599	0	6338	149	0

The all-atom clashscore is defined as the number of clashes found per 1000 atoms (including hydrogen atoms). The all-atom clashscore for this structure is 12.

All (149) close contacts within the same asymmetric unit are listed below, sorted by their clash magnitude.

Atom-1	Atom-2	Interatomic distance (Å)	Clash overlap (Å)
1:F:2:LYS:N	1:F:2:LYS:HD3	1.39	1.15
1:F:1:MET:H2	1:F:2:LYS:NZ	1.51	1.09
1:B:22[B]:CYS:SG	1:B:55:GLU:OE2	2.21	0.98
1:F:1:MET:H2	1:F:2:LYS:HZ3	1.01	0.95
1:F:2:LYS:H	1:F:2:LYS:HD3	1.06	0.86
1:F:1:MET:HA	1:F:6:LYS:HE2	1.61	0.82
5:F:204:TMP:O4	7:F:306:HOH:O	1.96	0.81
1:F:2:LYS:N	1:F:2:LYS:CD	2.29	0.80
1:C:85:GLY:HA2	1:C:108:LYS:HE2	1.64	0.80
1:F:1:MET:N	1:F:2:LYS:NZ	2.30	0.79
5:B:203:TMP:O3P	7:B:303:HOH:O	2.01	0.77
1:C:9:TYR:OH	1:F:40:HIS:HE1	1.68	0.76
1:F:2:LYS:H	1:F:2:LYS:CD	1.93	0.74
1:F:1:MET:O	1:F:1:MET:CG	2.30	0.72
1:F:1:MET:N	1:F:2:LYS:HZ3	1.86	0.71
1:B:117:ARG:NH1	7:B:303:HOH:O	2.23	0.71
1:C:37:ILE:HB	1:F:37:ILE:HB	1.72	0.71
1:F:118:ILE:HD12	1:F:118:ILE:H	1.55	0.70
1:A:1:MET:O	1:A:2:LYS:C	2.29	0.69
1:C:9:TYR:OH	1:F:40:HIS:CE1	2.46	0.68
1:E:58:ASP:OD1	1:E:58:ASP:O	2.11	0.68
1:D:38:LEU:O	1:D:75:LYS:NZ	2.27	0.68
1:A:123:ASP:O	1:A:127:GLN:HG3	1.93	0.67
1:A:120:ASP:HA	1:A:123:ASP:OD2	1.95	0.67
4:A:203:TTP:O2A	1:B:2:LYS:NZ	2.28	0.65
1:C:40:HIS:O	1:C:40:HIS:HD2	1.80	0.65
1:C:40:HIS:HE1	1:F:9:TYR:OH	1.79	0.65
1:C:40:HIS:O	1:C:40:HIS:CD2	2.51	0.64
1:C:85:GLY:HA2	1:C:108:LYS:CE	2.26	0.64
1:E:61:THR:HG21	5:E:204:TMP:H3'	1.80	0.64
1:F:1:MET:N	1:F:2:LYS:CD	2.61	0.64
1:C:81:GLU:OE2	1:F:81:GLU:HG3	1.98	0.64
1:F:1:MET:N	1:F:2:LYS:HD3	2.13	0.62
1:A:22[B]:CYS:HB2	1:A:54:CYS:SG	2.40	0.60
1:A:40:HIS:O	1:A:40:HIS:CD2	2.55	0.60
1:D:37:ILE:HB	1:E:37:ILE:HB	1.84	0.59
1:B:22[B]:CYS:HB2	1:B:54:CYS:SG	2.44	0.58
1:C:62:ASN:HB3	1:C:65:VAL:HG23	1.85	0.57
1:F:1:MET:HG3	1:F:1:MET:O	2.02	0.57
1:D:116:TYR:CZ	1:D:117:ARG:NH1	2.72	0.57

Continued on next page...

Continued from previous page...

Atom-1	Atom-2	Interatomic distance (Å)	Clash overlap (Å)
1:D:22[B]:CYS:HB2	1:D:54:CYS:SG	2.43	0.57
1:E:87:GLU:HG2	1:E:109:LYS:HB3	1.87	0.57
1:D:35:GLY:O	1:E:40:HIS:CE1	2.59	0.56
1:D:117:ARG:HG2	1:D:117:ARG:O	2.05	0.56
1:E:22:CYS:HB3	7:E:305:HOH:O	2.06	0.56
1:C:51:THR:OG1	1:C:53:CYS:HB3	2.05	0.55
1:F:22[C]:CYS:HB2	1:F:54:CYS:SG	2.47	0.55
1:F:1:MET:H2	1:F:2:LYS:CD	2.20	0.54
1:F:1:MET:H2	1:F:2:LYS:CE	2.19	0.54
1:A:52:ASN:ND2	4:A:203:TTP:O3G	2.38	0.54
1:B:33:LYS:HB3	1:B:38:LEU:HD11	1.89	0.54
1:D:40:HIS:O	1:D:40:HIS:CD2	2.60	0.54
1:E:112:TYR:HE1	1:E:115:GLU:HG3	1.73	0.53
1:E:40:HIS:H	1:E:75:LYS:HZ3	1.56	0.53
1:B:76:MET:HG2	1:B:83:ILE:HB	1.91	0.53
1:D:69:GLU:HG2	1:D:94:PRO:HB3	1.91	0.53
1:C:79:SER:OG	1:C:81:GLU:OE1	2.26	0.52
1:C:11:LYS:CB	1:F:15:LEU:HD11	2.40	0.52
1:B:112:TYR:HE1	1:B:115:GLU:HG2	1.75	0.52
1:B:112:TYR:CE1	1:B:115:GLU:HG2	2.44	0.52
1:C:30:ILE:HB	1:C:89:PHE:HB2	1.91	0.52
1:F:1:MET:C	1:F:2:LYS:HD3	2.20	0.51
1:E:56:LEU:O	1:E:57:GLU:OE1	2.29	0.51
1:D:97:ASP:OD1	1:D:97:ASP:O	2.29	0.51
1:D:85:GLY:HA2	1:D:108:LYS:HE2	1.93	0.50
1:F:1:MET:H2	1:F:2:LYS:HD3	1.77	0.50
1:D:24:ARG:NH1	5:D:204:TMP:O3P	2.43	0.50
1:E:57:GLU:CA	1:E:57:GLU:OE1	2.59	0.50
1:D:116:TYR:CE1	1:D:117:ARG:NH1	2.79	0.50
1:B:69:GLU:HG2	1:B:94:PRO:HB3	1.93	0.49
1:F:117:ARG:HB2	1:F:118:ILE:HD12	1.94	0.49
1:F:20:SER:HA	1:F:42:TRP:CD1	2.47	0.49
1:A:109:LYS:HD3	1:A:111:TYR:CZ	2.48	0.49
1:E:57:GLU:HA	1:E:57:GLU:OE1	2.13	0.49
1:C:20:SER:HA	1:C:42:TRP:CD1	2.48	0.48
1:C:11:LYS:HB3	1:F:15:LEU:HD11	1.95	0.48
1:B:109:LYS:HG3	1:B:131:GLU:HB3	1.96	0.48
1:E:62:ASN:HB3	1:E:65:VAL:HG13	1.96	0.48
1:D:61:THR:HG21	5:D:204:TMP:H3'	1.94	0.48
1:C:30:ILE:HG23	1:C:37:ILE:HG23	1.94	0.48
1:D:62:ASN:HB3	1:D:65:VAL:HG13	1.96	0.47

Continued on next page...

Continued from previous page...

Atom-1	Atom-2	Interatomic distance (Å)	Clash overlap (Å)
1:E:24:ARG:HD2	1:E:59:GLY:O	2.14	0.47
1:D:10:MET:HG2	1:D:113:ARG:HH11	1.80	0.47
1:E:57:GLU:CD	1:E:57:GLU:N	2.66	0.47
1:F:1:MET:H3	1:F:2:LYS:CD	2.27	0.47
1:E:6:LYS:HD3	1:E:111:TYR:CE1	2.49	0.47
1:E:90:CYS:O	1:E:112:TYR:HA	2.15	0.47
1:C:35:GLY:O	1:F:40:HIS:CE1	2.68	0.47
1:A:69:GLU:HG2	1:A:94:PRO:HB3	1.96	0.47
1:A:1:MET:C	1:A:2:LYS:O	2.49	0.46
1:D:87:GLU:HG2	1:D:109:LYS:HB3	1.96	0.46
1:A:85:GLY:HA2	1:A:108:LYS:HE2	1.98	0.46
1:B:69:GLU:N	1:B:69:GLU:OE1	2.48	0.46
1:E:58:ASP:OD1	1:E:58:ASP:C	2.53	0.46
1:B:112:TYR:CZ	1:B:134:LYS:HB2	2.51	0.46
4:F:203:TTP:H6	4:F:203:TTP:H5'1	1.81	0.46
1:A:23:LYS:N	1:A:55:GLU:OE2	2.24	0.46
1:F:69:GLU:OE1	7:F:306:HOH:O	2.21	0.45
1:F:93:SER:HA	1:F:94:PRO:HD3	1.76	0.45
1:D:112:TYR:HE1	1:D:115:GLU:HG3	1.81	0.45
1:A:16:PHE:O	1:A:19:VAL:HG22	2.17	0.45
1:F:24:ARG:HD3	1:F:59:GLY:O	2.17	0.44
1:A:33:LYS:HB3	1:A:38:LEU:HD11	2.00	0.44
1:C:117:ARG:HB2	1:C:118:ILE:HD12	1.98	0.44
1:B:17:SER:O	1:B:26:LYS:HB3	2.17	0.44
1:B:108:LYS:HA	1:B:108:LYS:HD3	1.71	0.44
1:F:40:HIS:CD2	1:F:40:HIS:O	2.71	0.44
1:C:76:MET:HA	1:C:79:SER:HB3	2.00	0.44
1:C:61:THR:OG1	5:C:204:TMP:O1P	2.25	0.43
1:E:75:LYS:HA	1:E:78:LYS:HB2	2.00	0.43
1:A:74:VAL:HG11	1:D:104:GLN:HG3	2.00	0.43
1:D:116:TYR:OH	1:D:117:ARG:NH1	2.40	0.43
1:F:69:GLU:HG2	1:F:94:PRO:HB3	2.00	0.43
1:E:30:ILE:HG23	1:E:37:ILE:HG23	1.99	0.43
1:A:1:MET:O	1:A:2:LYS:O	2.36	0.43
1:E:56:LEU:C	1:E:57:GLU:OE1	2.57	0.43
1:B:118:ILE:HG22	1:B:120:ASP:H	1.82	0.43
1:C:17:SER:O	1:C:26:LYS:HB3	2.19	0.43
1:F:118:ILE:CD1	1:F:118:ILE:H	2.30	0.42
1:F:8:ALA:O	1:F:12:THR:OG1	2.31	0.42
1:C:108:LYS:HA	1:C:108:LYS:HD3	1.64	0.42
1:A:30:ILE:HG13	1:A:40:HIS:HB3	2.02	0.42

Continued on next page...

Continued from previous page...

Atom-1	Atom-2	Interatomic distance (Å)	Clash overlap (Å)
1:A:15:LEU:HD21	1:B:11:LYS:CB	2.49	0.42
1:E:40:HIS:H	1:E:75:LYS:NZ	2.16	0.42
1:C:81:GLU:OE2	1:F:81:GLU:CG	2.67	0.41
1:F:5:ILE:HG22	1:F:6:LYS:HD3	2.01	0.41
1:E:45:THR:HG22	1:E:65:VAL:HG12	2.02	0.41
1:B:30:ILE:HB	1:B:89:PHE:HB2	2.02	0.41
1:A:50:HIS:CE1	1:A:51:THR:HG22	2.56	0.41
1:D:90:CYS:O	1:D:112:TYR:HA	2.20	0.41
1:A:15:LEU:HD21	1:B:11:LYS:HB2	2.03	0.41
1:A:75:LYS:HD3	1:A:75:LYS:HA	1.40	0.41
1:B:61:THR:HG21	5:B:203:TMP:H3'	2.03	0.41
1:E:116:TYR:CG	1:E:117:ARG:N	2.89	0.41
1:F:14:GLU:OE1	1:F:113:ARG:HD2	2.21	0.41
1:C:83:ILE:O	1:C:86:SER:OG	2.26	0.41
1:D:30:ILE:HG12	1:D:89:PHE:HB2	2.03	0.41
1:F:1:MET:N	1:F:2:LYS:HZ2	2.13	0.41
1:D:97:ASP:OD1	1:D:97:ASP:C	2.58	0.41
1:C:117:ARG:CZ	1:C:118:ILE:HD11	2.51	0.41
1:B:92:HIS:CD2	1:B:114:ASN:HB2	2.56	0.41
1:E:64:PHE:O	1:F:100:LYS:HD2	2.21	0.41
1:B:49:PHE:HB3	7:B:306:HOH:O	2.21	0.41
1:C:90:CYS:O	1:C:112:TYR:HA	2.21	0.41
1:B:64:PHE:HA	1:C:100:LYS:HD3	2.01	0.41
1:C:11:LYS:HB2	1:F:15:LEU:HD11	2.02	0.40
1:A:33:LYS:HB2	1:A:86:SER:HB2	2.04	0.40
1:A:15:LEU:HD22	1:B:15:LEU:HD11	2.04	0.40
1:B:7:GLU:HG3	1:B:11:LYS:HD2	2.03	0.40

There are no symmetry-related clashes.

5.3 Torsion angles ⓘ

5.3.1 Protein backbone ⓘ

In the following table, the Percentiles column shows the percent Ramachandran outliers of the chain as a percentile score with respect to all X-ray entries followed by that with respect to entries of similar resolution.

The Analysed column shows the number of residues for which the backbone conformation was analysed, and the total number of residues.

Mol	Chain	Analysed	Favoured	Allowed	Outliers	Percentiles	
1	A	134/138 (97%)	130 (97%)	2 (2%)	2 (2%)	13	42
1	B	134/138 (97%)	131 (98%)	3 (2%)	0	100	100
1	C	134/138 (97%)	132 (98%)	2 (2%)	0	100	100
1	D	134/138 (97%)	132 (98%)	1 (1%)	1 (1%)	26	63
1	E	133/138 (96%)	126 (95%)	5 (4%)	2 (2%)	13	42
1	F	134/138 (97%)	130 (97%)	2 (2%)	2 (2%)	13	42
All	All	803/828 (97%)	781 (97%)	15 (2%)	7 (1%)	21	57

All (7) Ramachandran outliers are listed below:

Mol	Chain	Res	Type
1	E	58	ASP
1	A	58	ASP
1	E	81	GLU
1	F	20	SER
1	F	117	ARG
1	A	117	ARG
1	D	118	ILE

5.3.2 Protein sidechains ⓘ

In the following table, the Percentiles column shows the percent sidechain outliers of the chain as a percentile score with respect to all X-ray entries followed by that with respect to entries of similar resolution.

The Analysed column shows the number of residues for which the sidechain conformation was analysed, and the total number of residues.

Mol	Chain	Analysed	Rotameric	Outliers	Percentiles	
1	A	117/118 (99%)	115 (98%)	2 (2%)	68	91
1	B	117/118 (99%)	117 (100%)	0	100	100
1	C	117/118 (99%)	117 (100%)	0	100	100
1	D	117/118 (99%)	117 (100%)	0	100	100
1	E	116/118 (98%)	114 (98%)	2 (2%)	68	91
1	F	117/118 (99%)	114 (97%)	3 (3%)	54	85
All	All	701/708 (99%)	694 (99%)	7 (1%)	82	95

All (7) residues with a non-rotameric sidechain are listed below:

Mol	Chain	Res	Type
1	A	30	ILE
1	A	75	LYS
1	E	55	GLU
1	E	57	GLU
1	F	1	MET
1	F	2	LYS
1	F	95	CYS

Some sidechains can be flipped to improve hydrogen bonding and reduce clashes. All (11) such sidechains are listed below:

Mol	Chain	Res	Type
1	A	40	HIS
1	A	126	GLN
1	B	21	ASN
1	B	40	HIS
1	C	21	ASN
1	C	40	HIS
1	D	40	HIS
1	D	114	ASN
1	E	34	ASN
1	E	40	HIS
1	F	40	HIS

5.3.3 RNA ⓘ

There are no RNA molecules in this entry.

5.4 Non-standard residues in protein, DNA, RNA chains ⓘ

There are no non-standard protein/DNA/RNA residues in this entry.

5.5 Carbohydrates ⓘ

There are no carbohydrates in this entry.

5.6 Ligand geometry ⓘ

Of 27 ligands modelled in this entry, 15 are monoatomic - leaving 12 for Mogul analysis.

In the following table, the Counts columns list the number of bonds (or angles) for which Mogul statistics could be retrieved, the number of bonds (or angles) that are observed in the model and the number of bonds (or angles) that are defined in the chemical component dictionary. The Link column lists molecule types, if any, to which the group is linked. The Z score for a bond length (or angle) is the number of standard deviations the observed value is removed from the expected value. A bond length (or angle) with $|Z| > 2$ is considered an outlier worth inspection. RMSZ is the root-mean-square of all Z scores of the bond lengths (or angles).

Mol	Type	Chain	Res	Link	Bond lengths			Bond angles		
					Counts	RMSZ	# $ Z > 2$	Counts	RMSZ	# $ Z > 2$
4	TTP	A	203	3	21,30,30	2.15	5 (23%)	31,47,47	3.05	9 (29%)
5	TMP	A	204	-	17,22,22	2.11	4 (23%)	22,33,33	2.05	4 (18%)
5	TMP	B	203	-	17,22,22	2.11	4 (23%)	22,33,33	2.06	4 (18%)
4	TTP	B	204	3	21,30,30	2.14	4 (19%)	31,47,47	3.08	9 (29%)
4	TTP	C	203	3	21,30,30	2.14	5 (23%)	31,47,47	3.13	9 (29%)
5	TMP	C	204	-	17,22,22	2.10	4 (23%)	22,33,33	2.10	4 (18%)
4	TTP	D	203	3	21,30,30	2.16	4 (19%)	31,47,47	3.11	9 (29%)
5	TMP	D	204	-	17,22,22	2.09	4 (23%)	22,33,33	2.17	4 (18%)
4	TTP	E	203	3	21,30,30	2.14	4 (19%)	31,47,47	3.09	9 (29%)
5	TMP	E	204	-	17,22,22	2.08	4 (23%)	22,33,33	2.13	4 (18%)
4	TTP	F	203	3	21,30,30	2.16	5 (23%)	31,47,47	3.06	10 (32%)
5	TMP	F	204	-	17,22,22	2.09	4 (23%)	22,33,33	2.14	4 (18%)

In the following table, the Chirals column lists the number of chiral outliers, the number of chiral centers analysed, the number of these observed in the model and the number defined in the chemical component dictionary. Similar counts are reported in the Torsion and Rings columns. '-' means no outliers of that kind were identified.

Mol	Type	Chain	Res	Link	Chirals	Torsions	Rings
4	TTP	A	203	3	-	0/18/34/34	0/2/2/2
5	TMP	A	204	-	-	0/6/22/22	0/2/2/2
5	TMP	B	203	-	-	0/6/22/22	0/2/2/2
4	TTP	B	204	3	-	0/18/34/34	0/2/2/2
4	TTP	C	203	3	-	0/18/34/34	0/2/2/2
5	TMP	C	204	-	-	0/6/22/22	0/2/2/2
4	TTP	D	203	3	-	0/18/34/34	0/2/2/2
5	TMP	D	204	-	-	0/6/22/22	0/2/2/2
4	TTP	E	203	3	-	0/18/34/34	0/2/2/2
5	TMP	E	204	-	-	0/6/22/22	0/2/2/2
4	TTP	F	203	3	-	0/18/34/34	0/2/2/2
5	TMP	F	204	-	-	0/6/22/22	0/2/2/2

All (51) bond length outliers are listed below:

Mol	Chain	Res	Type	Atoms	Z	Observed(Å)	Ideal(Å)
5	C	204	TMP	C5M-C5	-5.94	1.39	1.51
5	D	204	TMP	C5M-C5	-5.94	1.39	1.51
5	F	204	TMP	C5M-C5	-5.94	1.39	1.51
5	A	204	TMP	C5M-C5	-5.92	1.39	1.51
5	B	203	TMP	C5M-C5	-5.92	1.39	1.51
5	E	204	TMP	C5M-C5	-5.89	1.39	1.51
4	F	203	TTP	O3'-C3'	-2.70	1.37	1.43
4	C	203	TTP	O3'-C3'	-2.68	1.37	1.43
4	B	204	TTP	O3'-C3'	-2.66	1.37	1.43
4	D	203	TTP	O3'-C3'	-2.64	1.37	1.43
4	E	203	TTP	O3'-C3'	-2.62	1.37	1.43
4	A	203	TTP	O3'-C3'	-2.59	1.37	1.43
4	D	203	TTP	O4'-C4'	-2.20	1.39	1.45
4	B	204	TTP	O4'-C4'	-2.15	1.40	1.45
4	F	203	TTP	O4'-C4'	-2.11	1.40	1.45
4	F	203	TTP	C2'-C3'	-2.11	1.47	1.52
4	A	203	TTP	O4'-C4'	-2.10	1.40	1.45
5	F	204	TMP	P-O3P	-2.08	1.47	1.54
4	E	203	TTP	O4'-C4'	-2.08	1.40	1.45
5	C	204	TMP	P-O3P	-2.07	1.47	1.54
5	A	204	TMP	P-O3P	-2.07	1.47	1.54
5	B	203	TMP	P-O3P	-2.05	1.47	1.54
4	C	203	TTP	O4'-C4'	-2.05	1.40	1.45
5	E	204	TMP	P-O3P	-2.04	1.47	1.54
4	C	203	TTP	C2'-C3'	-2.04	1.47	1.52
5	D	204	TMP	P-O3P	-2.03	1.47	1.54
4	A	203	TTP	C2'-C3'	-2.02	1.47	1.52
5	C	204	TMP	C6-N1	3.47	1.40	1.35
5	E	204	TMP	C6-N1	3.48	1.40	1.35
5	F	204	TMP	C6-N1	3.48	1.40	1.35
5	D	204	TMP	C6-N1	3.54	1.40	1.35
5	B	203	TMP	C6-N1	3.58	1.40	1.35
5	A	204	TMP	C6-N1	3.61	1.40	1.35
5	D	204	TMP	C4-N3	3.86	1.40	1.33
5	A	204	TMP	C4-N3	3.92	1.40	1.33
5	B	203	TMP	C4-N3	3.92	1.40	1.33
5	C	204	TMP	C4-N3	3.96	1.40	1.33
5	F	204	TMP	C4-N3	3.99	1.40	1.33
5	E	204	TMP	C4-N3	4.02	1.40	1.33
4	A	203	TTP	C4-N3	4.79	1.42	1.33
4	F	203	TTP	C4-N3	4.80	1.42	1.33
4	D	203	TTP	C4-N3	4.80	1.42	1.33

Continued on next page...

Continued from previous page...

Mol	Chain	Res	Type	Atoms	Z	Observed(Å)	Ideal(Å)
4	E	203	TTP	C4-N3	4.80	1.42	1.33
4	C	203	TTP	C4-N3	4.82	1.42	1.33
4	B	204	TTP	C4-N3	4.83	1.42	1.33
4	B	204	TTP	C6-N1	6.66	1.45	1.35
4	C	203	TTP	C6-N1	6.67	1.45	1.35
4	E	203	TTP	C6-N1	6.71	1.45	1.35
4	D	203	TTP	C6-N1	6.75	1.45	1.35
4	A	203	TTP	C6-N1	6.76	1.45	1.35
4	F	203	TTP	C6-N1	6.77	1.45	1.35

All (79) bond angle outliers are listed below:

Mol	Chain	Res	Type	Atoms	Z	Observed(°)	Ideal(°)
4	A	203	TTP	O5'-PA-O1A	-6.87	82.97	109.62
4	C	203	TTP	O5'-PA-O1A	-6.62	83.90	109.62
4	D	203	TTP	O5'-PA-O1A	-6.51	84.33	109.62
4	E	203	TTP	O5'-PA-O1A	-6.51	84.35	109.62
4	B	204	TTP	O5'-PA-O1A	-6.51	84.37	109.62
4	F	203	TTP	O5'-PA-O1A	-6.31	85.12	109.62
4	A	203	TTP	C5-C4-N3	-5.92	118.54	125.14
4	F	203	TTP	C5-C4-N3	-5.86	118.61	125.14
4	C	203	TTP	C5-C4-N3	-5.83	118.65	125.14
4	A	203	TTP	O2A-PA-O1A	-5.82	80.98	112.53
4	D	203	TTP	PB-O3A-PA	-5.76	116.57	132.73
4	D	203	TTP	C5-C4-N3	-5.75	118.74	125.14
4	B	204	TTP	C5-C4-N3	-5.66	118.84	125.14
4	E	203	TTP	C5-C4-N3	-5.63	118.86	125.14
4	F	203	TTP	O2A-PA-O1A	-5.47	82.87	112.53
5	C	204	TMP	C5-C4-N3	-5.40	119.13	125.14
4	B	204	TTP	O2A-PA-O1A	-5.35	83.50	112.53
4	C	203	TTP	O2A-PA-O1A	-5.35	83.53	112.53
5	D	204	TMP	C5-C4-N3	-5.32	119.21	125.14
5	E	204	TMP	C5-C4-N3	-5.30	119.23	125.14
5	B	203	TMP	C5-C4-N3	-5.30	119.24	125.14
5	A	204	TMP	C5-C4-N3	-5.28	119.26	125.14
4	E	203	TTP	O2A-PA-O1A	-5.27	83.96	112.53
4	D	203	TTP	O2A-PA-O1A	-5.27	83.97	112.53
4	E	203	TTP	PB-O3A-PA	-5.26	117.97	132.73
5	F	204	TMP	C5-C4-N3	-5.22	119.33	125.14
4	B	204	TTP	PB-O3A-PA	-5.11	118.38	132.73
4	C	203	TTP	PB-O3A-PA	-5.02	118.62	132.73
4	F	203	TTP	PB-O3A-PA	-4.69	119.55	132.73

Continued on next page...

Continued from previous page...

Mol	Chain	Res	Type	Atoms	Z	Observed(°)	Ideal(°)
4	A	203	TTP	PB-O3B-PG	-4.62	117.17	132.67
4	B	204	TTP	PB-O3B-PG	-4.10	118.92	132.67
4	C	203	TTP	PB-O3B-PG	-4.03	119.15	132.67
4	E	203	TTP	PB-O3B-PG	-4.02	119.17	132.67
4	F	203	TTP	PB-O3B-PG	-3.96	119.38	132.67
5	F	204	TMP	C4'-O4'-C1'	-3.65	100.25	109.47
4	D	203	TTP	PB-O3B-PG	-3.62	120.54	132.67
5	D	204	TMP	O4'-C1'-C2'	-3.59	99.12	106.27
5	E	204	TMP	O4'-C1'-C2'	-3.58	99.14	106.27
5	F	204	TMP	O4'-C1'-C2'	-3.17	99.95	106.27
5	B	203	TMP	C3'-C2'-C1'	-2.80	95.65	102.40
5	D	204	TMP	C3'-C2'-C1'	-2.77	95.73	102.40
5	A	204	TMP	C3'-C2'-C1'	-2.75	95.77	102.40
5	C	204	TMP	C3'-C2'-C1'	-2.71	95.88	102.40
5	C	204	TMP	O4'-C1'-C2'	-2.70	100.88	106.27
5	A	204	TMP	O4'-C1'-C2'	-2.42	101.44	106.27
5	B	203	TMP	O4'-C1'-C2'	-2.19	101.90	106.27
5	E	204	TMP	C3'-C2'-C1'	-2.16	97.19	102.40
4	A	203	TTP	PB-O3A-PA	-2.14	126.72	132.73
4	F	203	TTP	O4'-C1'-N1	2.02	111.21	107.72
4	B	204	TTP	O2A-PA-O5'	2.04	118.76	108.46
4	E	203	TTP	O2A-PA-O5'	2.04	118.77	108.46
4	C	203	TTP	O2A-PA-O5'	2.04	118.77	108.46
4	F	203	TTP	O2A-PA-O5'	2.08	118.98	108.46
4	D	203	TTP	O2A-PA-O5'	2.10	119.08	108.46
4	A	203	TTP	O2A-PA-O5'	2.58	121.46	108.46
4	C	203	TTP	O2A-PA-O3A	2.93	118.37	105.09
4	E	203	TTP	O2A-PA-O3A	2.96	118.52	105.09
4	D	203	TTP	O2A-PA-O3A	2.97	118.58	105.09
4	B	204	TTP	O2A-PA-O3A	2.99	118.66	105.09
4	A	203	TTP	O2A-PA-O3A	3.20	119.63	105.09
4	F	203	TTP	O2A-PA-O3A	3.22	119.69	105.09
4	A	203	TTP	O3A-PA-O5'	4.83	115.75	102.94
5	A	204	TMP	C4-N3-C2	5.47	119.98	115.25
4	F	203	TTP	O3A-PA-O5'	5.48	117.47	102.94
5	F	204	TMP	C4-N3-C2	5.58	120.07	115.25
5	D	204	TMP	C4-N3-C2	5.58	120.07	115.25
5	B	203	TMP	C4-N3-C2	5.62	120.11	115.25
5	C	204	TMP	C4-N3-C2	5.67	120.15	115.25
5	E	204	TMP	C4-N3-C2	5.69	120.16	115.25
4	D	203	TTP	O3A-PA-O5'	6.00	118.85	102.94
4	B	204	TTP	O3A-PA-O5'	6.05	118.99	102.94

Continued on next page...

Continued from previous page...

Mol	Chain	Res	Type	Atoms	Z	Observed(°)	Ideal(°)
4	E	203	TTP	O3A-PA-O5'	6.11	119.15	102.94
4	C	203	TTP	O3A-PA-O5'	6.12	119.18	102.94
4	B	204	TTP	C4-N3-C2	9.19	123.19	115.25
4	E	203	TTP	C4-N3-C2	9.31	123.29	115.25
4	D	203	TTP	C4-N3-C2	9.34	123.32	115.25
4	F	203	TTP	C4-N3-C2	9.50	123.45	115.25
4	C	203	TTP	C4-N3-C2	9.50	123.46	115.25
4	A	203	TTP	C4-N3-C2	9.56	123.51	115.25

There are no chirality outliers.

There are no torsion outliers.

There are no ring outliers.

7 monomers are involved in 10 short contacts:

Mol	Chain	Res	Type	Clashes	Symm-Clashes
4	A	203	TTP	2	0
5	B	203	TMP	2	0
5	C	204	TMP	1	0
5	D	204	TMP	2	0
5	E	204	TMP	1	0
4	F	203	TTP	1	0
5	F	204	TMP	1	0

5.7 Other polymers [i](#)

There are no such residues in this entry.

5.8 Polymer linkage issues [i](#)

There are no chain breaks in this entry.

6 Fit of model and data ⓘ

6.1 Protein, DNA and RNA chains ⓘ

In the following table, the column labelled ‘#RSRZ> 2’ contains the number (and percentage) of RSRZ outliers, followed by percent RSRZ outliers for the chain as percentile scores relative to all X-ray entries and entries of similar resolution. The OWAB column contains the minimum, median, 95th percentile and maximum values of the occupancy-weighted average B-factor per residue. The column labelled ‘Q< 0.9’ lists the number of (and percentage) of residues with an average occupancy less than 0.9.

Mol	Chain	Analysed	<RSRZ>	#RSRZ>2	OWAB(Å ²)	Q<0.9
1	A	135/138 (97%)	0.08	3 (2%) 65 60	23, 35, 54, 61	0
1	B	135/138 (97%)	-0.09	1 (0%) 89 88	22, 33, 52, 63	0
1	C	136/138 (98%)	-0.01	1 (0%) 89 88	22, 35, 55, 62	0
1	D	135/138 (97%)	0.03	2 (1%) 76 74	25, 39, 58, 64	0
1	E	135/138 (97%)	0.19	3 (2%) 65 60	29, 42, 63, 70	0
1	F	135/138 (97%)	-0.01	1 (0%) 89 88	26, 38, 57, 62	0
All	All	811/828 (97%)	0.03	11 (1%) 78 76	22, 37, 57, 70	0

All (11) RSRZ outliers are listed below:

Mol	Chain	Res	Type	RSRZ
1	E	23	LYS	3.0
1	E	22	CYS	2.8
1	D	57	GLU	2.6
1	D	115	GLU	2.5
1	C	119	THR	2.5
1	A	57	GLU	2.4
1	A	116	TYR	2.3
1	B	119	THR	2.3
1	A	117	ARG	2.1
1	F	95	CYS	2.1
1	E	53	CYS	2.0

6.2 Non-standard residues in protein, DNA, RNA chains ⓘ

There are no non-standard protein/DNA/RNA residues in this entry.

6.3 Carbohydrates ⓘ

There are no carbohydrates in this entry.

6.4 Ligands ⓘ

In the following table, the Atoms column lists the number of modelled atoms in the group and the number defined in the chemical component dictionary. LLDF column lists the quality of electron density of the group with respect to its neighbouring residues in protein, DNA or RNA chains. The B-factors column lists the minimum, median, 95th percentile and maximum values of B factors of atoms in the group. The column labelled 'Q< 0.9' lists the number of atoms with occupancy less than 0.9.

Mol	Type	Chain	Res	Atoms	RSCC	RSR	LLDF	B-factors(Å ²)	Q<0.9
3	MG	C	202	1/1	0.67	0.20	5.53	18,18,18,18	0
5	TMP	F	204	21/21	0.87	0.21	0.51	58,59,62,62	0
5	TMP	C	204	21/21	0.87	0.23	0.47	60,64,68,70	0
4	TTP	C	203	29/29	0.94	0.16	0.34	28,32,36,38	0
5	TMP	D	204	21/21	0.85	0.20	0.24	52,58,63,65	0
4	TTP	D	203	29/29	0.91	0.18	-0.08	32,37,51,52	0
5	TMP	A	204	21/21	0.91	0.20	-0.09	43,47,55,56	0
5	TMP	B	203	21/21	0.94	0.17	-0.31	38,47,49,49	0
4	TTP	F	203	29/29	0.93	0.16	-0.44	33,36,40,41	0
3	MG	B	202	1/1	0.89	0.14	-0.67	32,32,32,32	0
3	MG	D	202	1/1	0.70	0.14	-0.77	45,45,45,45	0
4	TTP	A	203	29/29	0.95	0.15	-0.78	26,30,32,34	0
4	TTP	B	204	29/29	0.94	0.14	-0.81	28,31,39,41	0
4	TTP	E	203	29/29	0.94	0.15	-0.81	37,43,54,56	0
3	MG	F	202	1/1	0.78	0.13	-0.86	15,15,15,15	0
6	CL	E	205	1/1	0.84	0.14	-1.25	28,28,28,28	0
5	TMP	E	204	21/21	0.94	0.14	-1.31	42,48,51,54	0
6	CL	A	205	1/1	0.81	0.14	-1.85	31,31,31,31	0
3	MG	E	202	1/1	0.97	0.08	-2.16	51,51,51,51	0
6	CL	B	205	1/1	0.93	0.10	-2.43	27,27,27,27	0
2	ZN	D	201	1/1	0.98	0.07	-3.41	41,41,41,41	0
3	MG	A	202	1/1	0.74	0.07	-4.61	37,37,37,37	0
2	ZN	F	201	1/1	0.81	0.15	-	58,58,58,58	0
2	ZN	E	201	1/1	0.88	0.09	-	47,47,47,47	0
2	ZN	C	201	1/1	0.98	0.09	-	38,38,38,38	0
2	ZN	A	201	1/1	0.98	0.05	-	37,37,37,37	0
2	ZN	B	201	1/1	0.99	0.09	-	37,37,37,37	0

6.5 Other polymers [i](#)

There are no such residues in this entry.