



Full wwPDB X-ray Structure Validation Report ⓘ

Feb 1, 2016 – 05:06 AM GMT

PDB ID : 2PEL
Title : PEANUT LECTIN
Authors : Banerjee, R.; Das, K.; Ravishankar, R.; Suguna, K.; Surolia, A.; Vijayan, M.
Deposited on : 1995-08-23
Resolution : 2.25 Å(reported)

This is a Full wwPDB X-ray Structure Validation Report for a publicly released PDB entry.
We welcome your comments at validation@mail.wwpdb.org
A user guide is available at
<http://wwpdb.org/validation/2016/XrayValidationReportHelp>
with specific help available everywhere you see the ⓘ symbol.

The following versions of software and data (see [references ⓘ](#)) were used in the production of this report:

MolProbity : 4.02b-467
Mogul : 1.7 (RC4), CSD as536be (2015)
Xtriage (Phenix) : 1.9-1692
EDS : rb-20026688
Percentile statistics : 20151230.v01 (using entries in the PDB archive December 30th 2015)
Refmac : 5.8.0135
CCP4 : 6.5.0
Ideal geometry (proteins) : Engh & Huber (2001)
Ideal geometry (DNA, RNA) : Parkinson et al. (1996)
Validation Pipeline (wwPDB-VP) : trunk26865

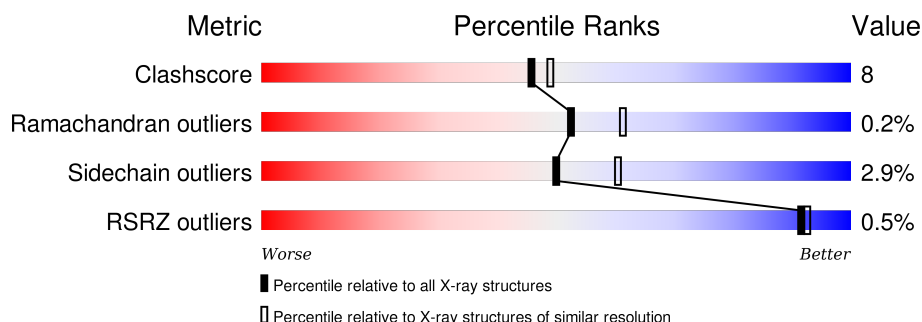
1 Overall quality at a glance

The following experimental techniques were used to determine the structure:

X-RAY DIFFRACTION

The reported resolution of this entry is 2.25 Å.

Percentile scores (ranging between 0-100) for global validation metrics of the entry are shown in the following graphic. The table shows the number of entries on which the scores are based.



Metric	Whole archive (#Entries)	Similar resolution (#Entries, resolution range(Å))
Clashscore	102246	1095 (2.26-2.26)
Ramachandran outliers	100387	1063 (2.26-2.26)
Sidechain outliers	100360	1063 (2.26-2.26)
RSRZ outliers	91569	1647 (2.28-2.24)

The table below summarises the geometric issues observed across the polymeric chains and their fit to the electron density. The red, orange, yellow and green segments on the lower bar indicate the fraction of residues that contain outliers for ≥ 3 , 2, 1 and 0 types of geometric quality criteria. A grey segment represents the fraction of residues that are not modelled. The numeric value for each fraction is indicated below the corresponding segment, with a dot representing fractions $\leq 5\%$. The upper red bar (where present) indicates the fraction of residues that have poor fit to the electron density. The numeric value is given above the bar.

Mol	Chain	Length	Quality of chain
1	A	236	
1	B	236	
1	C	236	
1	D	236	

The following table lists non-polymeric compounds, carbohydrate monomers and non-standard residues in protein, DNA, RNA chains that are outliers for geometric or electron-density-fit criteria:

Mol	Type	Chain	Res	Chirality	Geometry	Clashes	Electron density
2	LBT	D	240	-	-	-	X
3	LAT	C	240	-	-	-	X
5	MN	B	238	-	-	-	X
5	MN	D	238	-	-	-	X

2 Entry composition [i](#)

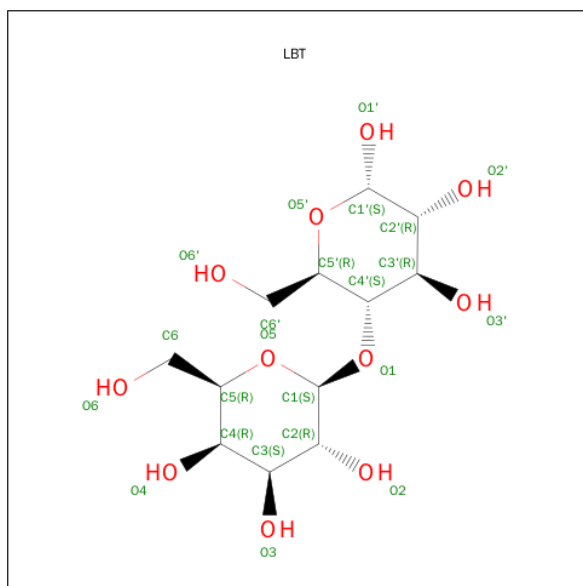
There are 6 unique types of molecules in this entry. The entry contains 7635 atoms, of which 0 are hydrogens and 0 are deuteriums.

In the tables below, the ZeroOcc column contains the number of atoms modelled with zero occupancy, the AltConf column contains the number of residues with at least one atom in alternate conformation and the Trace column contains the number of residues modelled with at most 2 atoms.

- Molecule 1 is a protein called PEANUT LECTIN.

Mol	Chain	Residues	Atoms					ZeroOcc	AltConf	Trace
1	A	232	Total	C	N	O	S	0	0	0
			1743	1102	287	352	2			
1	B	232	Total	C	N	O	S	0	0	0
			1743	1102	287	352	2			
1	C	232	Total	C	N	O	S	0	0	0
			1743	1102	287	352	2			
1	D	232	Total	C	N	O	S	0	0	0
			1743	1102	287	352	2			

- Molecule 2 is SUGAR (LACTOSE) (three-letter code: LBT) (formula: $C_{12}H_{22}O_{11}$).



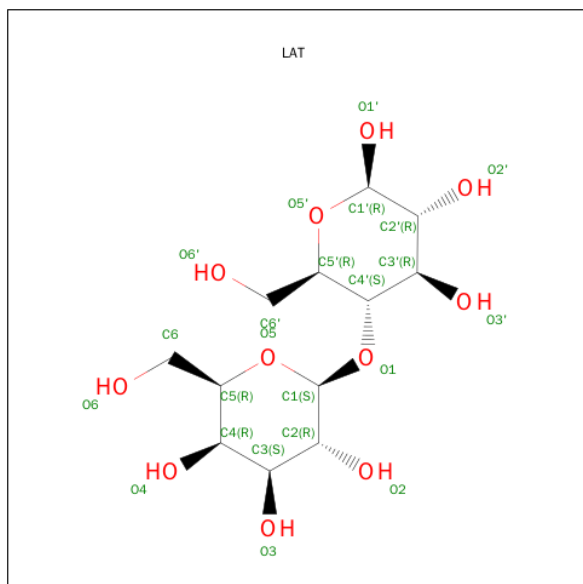
Mol	Chain	Residues	Atoms			ZeroOcc	AltConf
2	A	1	Total	C	O	0	0
			23	12	11		
2	B	1	Total	C	O	0	0
			23	12	11		

Continued on next page...

Continued from previous page...

Mol	Chain	Residues	Atoms			ZeroOcc	AltConf
2	D	1	Total	C	O	0	0
			23	12	11		

- Molecule 3 is SUGAR (LACTOSE) (three-letter code: LAT) (formula: $C_{12}H_{22}O_{11}$).



Mol	Chain	Residues	Atoms			ZeroOcc	AltConf
3	C	1	Total	C	O	0	0
			23	12	11		

- Molecule 4 is CALCIUM ION (three-letter code: CA) (formula: Ca).

Mol	Chain	Residues	Atoms		ZeroOcc	AltConf
4	B	1	Total	Ca	0	0
			1	1		
4	A	1	Total	Ca	0	0
			1	1		
4	D	1	Total	Ca	0	0
			1	1		
4	C	1	Total	Ca	0	0
			1	1		

- Molecule 5 is MANGANESE (II) ION (three-letter code: MN) (formula: Mn).

Mol	Chain	Residues	Atoms		ZeroOcc	AltConf
5	B	1	Total	Mn	0	0
			1	1		

Continued on next page...

Continued from previous page...

Mol	Chain	Residues	Atoms		ZeroOcc	AltConf
5	A	1	Total 1	Mn 1	0	0
5	D	1	Total 1	Mn 1	0	0
5	C	1	Total 1	Mn 1	0	0

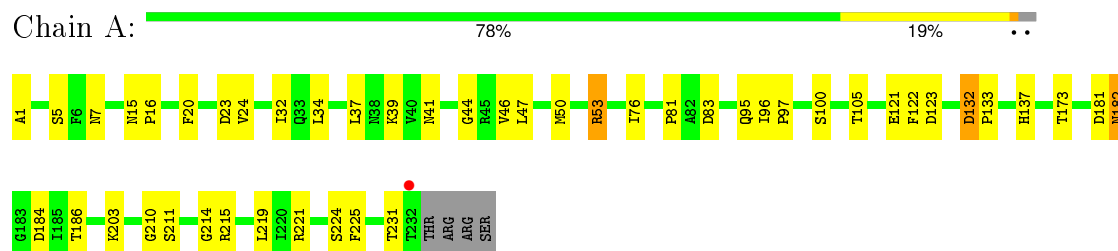
- Molecule 6 is water.

Mol	Chain	Residues	Atoms		ZeroOcc	AltConf
6	A	147	Total 147	O 147	0	0
6	B	165	Total 165	O 165	0	0
6	C	122	Total 122	O 122	0	0
6	D	129	Total 129	O 129	0	0

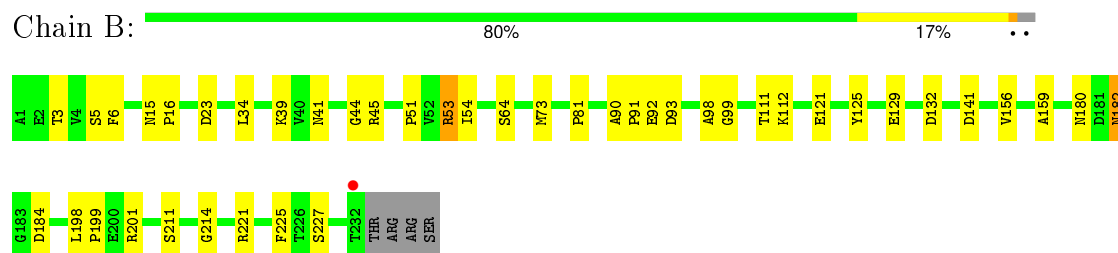
3 Residue-property plots [i](#)

These plots are drawn for all protein, RNA and DNA chains in the entry. The first graphic for a chain summarises the proportions of errors displayed in the second graphic. The second graphic shows the sequence view annotated by issues in geometry and electron density. Residues are color-coded according to the number of geometric quality criteria for which they contain at least one outlier: green = 0, yellow = 1, orange = 2 and red = 3 or more. A red dot above a residue indicates a poor fit to the electron density ($RSRZ > 2$). Stretches of 2 or more consecutive residues without any outlier are shown as a green connector. Residues present in the sample, but not in the model, are shown in grey.

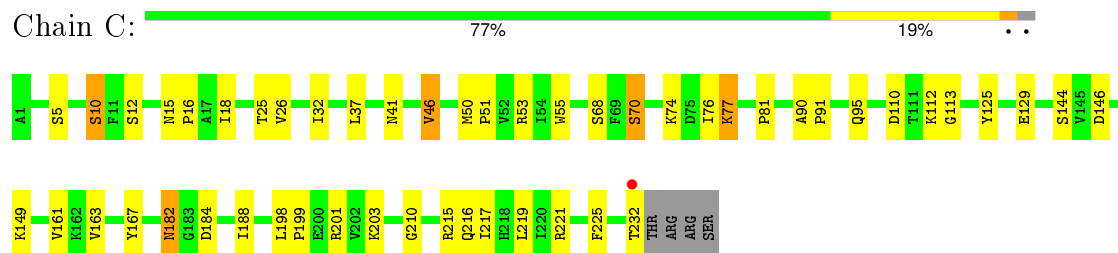
• Molecule 1: PEANUT LECTIN



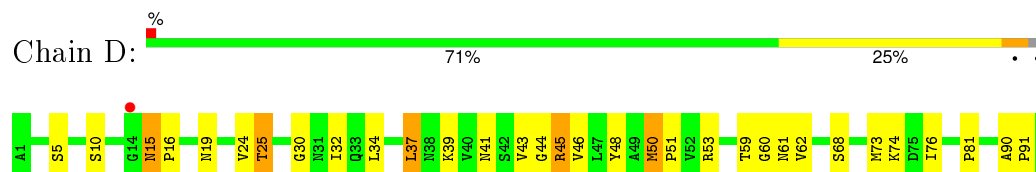
• Molecule 1: PEANUT LECTIN

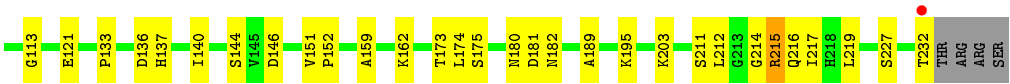


• Molecule 1: PEANUT LECTIN



• Molecule 1: PEANUT LECTIN





4 Data and refinement statistics

Property	Value	Source
Space group	P 21 21 2	Depositor
Cell constants a, b, c, α , β , γ	129.30 Å 126.90 Å 76.90 Å 90.00° 90.00° 90.00°	Depositor
Resolution (Å)	10.00 – 2.25 10.00 – 2.25	Depositor EDS
% Data completeness (in resolution range)	78.0 (10.00-2.25) 74.2 (10.00-2.25)	Depositor EDS
R_{merge}	0.08	Depositor
R_{sym}	(Not available)	Depositor
$\langle I/\sigma(I) \rangle$ ¹	5.00 (at 2.26 Å)	Xtriage
Refinement program	PROLSQ	Depositor
R, R_{free}	0.164 , (Not available) 0.157 , (Not available)	Depositor DCC
R_{free} test set	No test flags present.	DCC
Wilson B-factor (Å ²)	19.9	Xtriage
Anisotropy	0.624	Xtriage
Bulk solvent k_{sol} (e/Å ³), B_{sol} (Å ²)	0.25 , 58.5	EDS
Estimated twinning fraction	0.018 for k,h,-l	Xtriage
L-test for twinning ²	$\langle L \rangle = 0.48$, $\langle L^2 \rangle = 0.30$	Xtriage
Outliers	0 of 44510 reflections	Xtriage
F_o, F_c correlation	0.95	EDS
Total number of atoms	7635	wwPDB-VP
Average B, all atoms (Å ²)	22.0	wwPDB-VP

Xtriage's analysis on translational NCS is as follows: *The largest off-origin peak in the Patterson function is 4.09% of the height of the origin peak. No significant pseudotranslation is detected.*

¹Intensities estimated from amplitudes.

²Theoretical values of $\langle |L| \rangle$, $\langle L^2 \rangle$ for acentric reflections are 0.5, 0.375 respectively for untwinned datasets, and 0.333, 0.2 for perfectly twinned datasets.

5 Model quality ⓘ

5.1 Standard geometry ⓘ

Bond lengths and bond angles in the following residue types are not validated in this section: LAT, CA, MN, LBT

The Z score for a bond length (or angle) is the number of standard deviations the observed value is removed from the expected value. A bond length (or angle) with $|Z| > 5$ is considered an outlier worth inspection. RMSZ is the root-mean-square of all Z scores of the bond lengths (or angles).

Mol	Chain	Bond lengths		Bond angles	
		RMSZ	$\# Z > 5$	RMSZ	$\# Z > 5$
1	A	0.84	0/1779	1.58	15/2426 (0.6%)
1	B	0.87	1/1779 (0.1%)	1.56	15/2426 (0.6%)
1	C	0.82	0/1779	1.55	14/2426 (0.6%)
1	D	0.83	0/1779	1.57	16/2426 (0.7%)
All	All	0.84	1/7116 (0.0%)	1.57	60/9704 (0.6%)

All (1) bond length outliers are listed below:

Mol	Chain	Res	Type	Atoms	Z	Observed(Å)	Ideal(Å)
1	B	99	GLY	N-CA	6.17	1.55	1.46

All (60) bond angle outliers are listed below:

Mol	Chain	Res	Type	Atoms	Z	Observed(°)	Ideal(°)
1	A	221	ARG	NE-CZ-NH2	-11.03	114.79	120.30
1	C	53	ARG	NE-CZ-NH1	10.59	125.59	120.30
1	B	53	ARG	NE-CZ-NH2	-9.95	115.33	120.30
1	C	215	ARG	NE-CZ-NH2	-9.78	115.41	120.30
1	A	221	ARG	NE-CZ-NH1	9.35	124.97	120.30
1	C	215	ARG	NE-CZ-NH1	8.73	124.66	120.30
1	A	132	ASP	CB-CG-OD2	-8.63	110.53	118.30
1	A	181	ASP	CB-CG-OD2	-8.53	110.62	118.30
1	A	53	ARG	NE-CZ-NH2	-8.29	116.16	120.30
1	A	23	ASP	CB-CG-OD2	8.22	125.69	118.30
1	B	221	ARG	NE-CZ-NH1	7.82	124.21	120.30
1	B	132	ASP	CB-CG-OD2	-7.71	111.36	118.30
1	B	45	ARG	NE-CZ-NH2	-7.70	116.45	120.30
1	A	215	ARG	NE-CZ-NH2	-7.40	116.60	120.30
1	A	215	ARG	NE-CZ-NH1	7.33	123.96	120.30
1	D	146	ASP	CB-CG-OD2	7.17	124.75	118.30

Continued on next page...

Continued from previous page...

Mol	Chain	Res	Type	Atoms	Z	Observed(°)	Ideal(°)
1	B	221	ARG	NE-CZ-NH2	-7.12	116.74	120.30
1	C	110	ASP	CB-CG-OD1	7.07	124.67	118.30
1	B	201	ARG	NE-CZ-NH2	-6.94	116.83	120.30
1	D	215	ARG	NE-CZ-NH2	6.94	123.77	120.30
1	C	53	ARG	CD-NE-CZ	6.83	133.16	123.60
1	B	23	ASP	CB-CG-OD2	6.65	124.29	118.30
1	A	23	ASP	CB-CG-OD1	-6.58	112.38	118.30
1	B	129	GLU	CA-CB-CG	6.52	127.75	113.40
1	C	10	SER	N-CA-CB	6.52	120.28	110.50
1	C	146	ASP	CB-CG-OD1	6.27	123.95	118.30
1	D	162	LYS	CD-CE-NZ	6.14	125.81	111.70
1	D	45	ARG	NE-CZ-NH1	6.11	123.36	120.30
1	B	98	ALA	CA-C-N	6.07	128.34	116.20
1	D	93	ASP	CB-CG-OD1	5.98	123.69	118.30
1	C	70	SER	N-CA-CB	5.83	119.25	110.50
1	A	231	THR	N-CA-CB	5.81	121.33	110.30
1	D	45	ARG	NE-CZ-NH2	-5.70	117.45	120.30
1	B	98	ALA	C-N-CA	-5.58	110.58	122.30
1	C	221	ARG	NE-CZ-NH2	5.58	123.09	120.30
1	C	55	TRP	CA-CB-CG	5.52	124.19	113.70
1	C	95	GLN	CB-CA-C	-5.52	99.36	110.40
1	D	50	MET	CA-CB-CG	-5.50	103.95	113.30
1	B	93	ASP	CB-CG-OD1	5.48	123.23	118.30
1	D	48	TYR	CB-CG-CD1	-5.47	117.72	121.00
1	A	186	THR	CA-CB-CG2	5.45	120.03	112.40
1	B	73	MET	CA-CB-CG	-5.45	104.04	113.30
1	B	180	ASN	CB-CG-OD1	-5.42	110.77	121.60
1	A	39	LYS	N-CA-CB	-5.36	100.95	110.60
1	D	48	TYR	CB-CG-CD2	5.31	124.18	121.00
1	B	98	ALA	CA-C-O	-5.29	109.00	120.10
1	C	129	GLU	CA-CB-CG	5.29	125.03	113.40
1	B	53	ARG	NE-CZ-NH1	5.26	122.93	120.30
1	A	105	THR	CA-CB-CG2	5.24	119.74	112.40
1	D	180	ASN	CB-CG-OD1	-5.23	111.14	121.60
1	A	181	ASP	OD1-CG-OD2	5.16	133.11	123.30
1	D	53	ARG	NE-CZ-NH2	-5.16	117.72	120.30
1	C	146	ASP	N-CA-C	-5.12	97.17	111.00
1	D	53	ARG	NE-CZ-NH1	-5.11	117.75	120.30
1	C	167	TYR	CB-CG-CD2	-5.09	117.94	121.00
1	D	136	ASP	CB-CG-OD1	-5.08	113.73	118.30
1	D	121	GLU	C-N-CA	5.07	134.37	121.70
1	D	121	GLU	CG-CD-OE1	5.02	128.34	118.30

Continued on next page...

Continued from previous page...

Mol	Chain	Res	Type	Atoms	Z	Observed($^{\circ}$)	Ideal($^{\circ}$)
1	A	122	PHE	N-CA-C	-5.01	97.46	111.00
1	D	227	SER	N-CA-CB	5.01	118.02	110.50

There are no chirality outliers.

There are no planarity outliers.

5.2 Too-close contacts ⓘ

In the following table, the Non-H and H(model) columns list the number of non-hydrogen atoms and hydrogen atoms in the chain respectively. The H(added) column lists the number of hydrogen atoms added and optimized by MolProbity. The Clashes column lists the number of clashes within the asymmetric unit, whereas Symm-Clashes lists symmetry related clashes.

Mol	Chain	Non-H	H(model)	H(added)	Clashes	Symm-Clashes
1	A	1743	0	1699	25	0
1	B	1743	0	1699	18	0
1	C	1743	0	1699	30	0
1	D	1743	0	1699	38	0
2	A	23	0	22	1	0
2	B	23	0	21	2	0
2	D	23	0	22	0	0
3	C	23	0	22	1	0
4	A	1	0	0	0	0
4	B	1	0	0	0	0
4	C	1	0	0	0	0
4	D	1	0	0	0	0
5	A	1	0	0	0	0
5	B	1	0	0	0	0
5	C	1	0	0	0	0
5	D	1	0	0	0	0
6	A	147	0	0	3	0
6	B	165	0	0	1	0
6	C	122	0	0	2	0
6	D	129	0	0	5	0
All	All	7635	0	6883	107	0

The all-atom clashscore is defined as the number of clashes found per 1000 atoms (including hydrogen atoms). The all-atom clashscore for this structure is 8.

All (107) close contacts within the same asymmetric unit are listed below, sorted by their clash magnitude.

Atom-1	Atom-2	Interatomic distance (Å)	Clash overlap (Å)
1:D:37:LEU:HG	1:D:76:ILE:HD13	1.55	0.87
1:B:111:THR:HG22	1:B:112:LYS:HD3	1.62	0.79
1:A:15:ASN:HD22	1:A:16:PRO:HD2	1.49	0.78
1:C:77:LYS:H	1:C:77:LYS:HD2	1.50	0.76
1:C:15:ASN:HD22	1:C:16:PRO:HD2	1.51	0.75
1:A:182:ASN:HD21	1:A:184:ASP:HB2	1.55	0.70
1:A:41:ASN:HD22	1:A:211:SER:HA	1.58	0.69
1:C:182:ASN:HD21	1:C:184:ASP:HB2	1.58	0.68
1:D:175:SER:HB3	1:D:189:ALA:HB2	1.76	0.67
1:B:182:ASN:ND2	1:B:184:ASP:H	1.93	0.66
1:C:77:LYS:CD	1:C:77:LYS:H	2.05	0.66
1:D:62:VAL:HG21	6:D:328:HOH:O	1.99	0.62
1:D:10:SER:HB2	1:D:30:GLY:HA3	1.82	0.62
1:A:34:LEU:O	1:A:44:GLY:HA3	2.00	0.61
1:D:90:ALA:HB1	1:D:91:PRO:HD2	1.83	0.61
1:D:15:ASN:HD22	1:D:16:PRO:HD2	1.65	0.61
1:D:60:GLY:HA2	1:D:195:LYS:HZ2	1.68	0.59
1:D:25:THR:HG22	6:D:271:HOH:O	2.04	0.58
1:A:50:MET:HG3	6:B:248:HOH:O	2.02	0.57
1:A:15:ASN:HD22	1:A:16:PRO:CD	2.17	0.57
1:C:149:LYS:HG2	1:C:188:ILE:HD11	1.87	0.57
1:D:34:LEU:O	1:D:44:GLY:HA3	2.05	0.57
1:A:37:LEU:HG	1:A:76:ILE:HD13	1.87	0.57
1:B:34:LEU:O	1:B:44:GLY:HA3	2.05	0.57
1:D:90:ALA:HB1	1:D:91:PRO:CD	2.35	0.56
1:D:133:PRO:HD2	1:D:137:HIS:CE1	2.40	0.56
1:A:133:PRO:HD2	1:A:137:HIS:CE1	2.41	0.56
1:C:12:SER:HA	1:C:26:VAL:HG11	1.88	0.55
1:C:32:ILE:O	1:C:219:LEU:HA	2.06	0.55
1:C:10:SER:HB3	1:D:74:LYS:HE2	1.88	0.55
1:D:32:ILE:HD13	1:D:46:VAL:HG21	1.89	0.55
1:B:41:ASN:HD22	1:B:211:SER:HA	1.71	0.55
1:C:15:ASN:ND2	1:C:16:PRO:HD2	2.21	0.54
1:D:10:SER:HA	6:D:245:HOH:O	2.07	0.54
1:D:19:ASN:ND2	1:D:203:LYS:NZ	2.57	0.53
1:A:173:THR:HG21	1:D:173:THR:HG21	1.89	0.53
1:C:32:ILE:HD13	1:C:46:VAL:HG21	1.90	0.53
1:C:74:LYS:HE2	1:D:10:SER:HB3	1.89	0.53
1:C:37:LEU:HG	1:C:76:ILE:HD13	1.89	0.53
1:D:43:VAL:HG12	1:D:96:ILE:HD13	1.90	0.53
1:D:60:GLY:HA2	1:D:195:LYS:NZ	2.25	0.51
1:C:113:GLY:O	1:C:144:SER:HA	2.11	0.51

Continued on next page...

Continued from previous page...

Atom-1	Atom-2	Interatomic distance (Å)	Clash overlap (Å)
1:B:51:PRO:HB3	1:B:92:GLU:HG3	1.93	0.51
1:C:198:LEU:HB3	1:C:199:PRO:HD2	1.93	0.50
1:D:41:ASN:ND2	1:D:211:SER:HA	2.26	0.50
1:A:182:ASN:ND2	1:A:184:ASP:HB2	2.25	0.50
1:A:47:LEU:HD23	1:A:203:LYS:HB3	1.92	0.50
1:A:95:GLN:NE2	6:A:279:HOH:O	2.44	0.50
1:D:24:VAL:HG21	1:D:45:ARG:O	2.12	0.49
1:C:70:SER:HA	1:C:161:VAL:O	2.13	0.48
1:B:15:ASN:HD22	1:B:16:PRO:HD2	1.77	0.48
1:D:113:GLY:O	1:D:144:SER:HA	2.13	0.48
1:B:91:PRO:HB3	1:B:199:PRO:HG3	1.95	0.48
1:A:32:ILE:HD13	1:A:46:VAL:HG21	1.95	0.48
1:C:41:ASN:N	1:C:41:ASN:HD22	2.11	0.48
1:D:140:ILE:HD13	1:D:174:LEU:HD23	1.96	0.48
1:C:37:LEU:HB2	6:C:334:HOH:O	2.12	0.48
1:B:90:ALA:HB1	1:B:91:PRO:HD2	1.96	0.48
1:D:175:SER:HB3	1:D:189:ALA:CB	2.44	0.48
1:D:50:MET:HG2	1:D:51:PRO:HD2	1.94	0.48
1:D:214:GLY:O	1:D:215:ARG:HG2	2.15	0.47
1:D:19:ASN:HD21	1:D:203:LYS:HZ1	1.60	0.47
1:C:68:SER:HA	1:C:163:VAL:O	2.15	0.47
1:C:90:ALA:HB1	1:C:91:PRO:HD2	1.96	0.47
1:B:39:LYS:HE2	1:B:39:LYS:HB3	1.66	0.46
1:D:203:LYS:HA	6:D:246:HOH:O	2.14	0.46
1:B:125:TYR:CZ	2:B:240:LBT:H5	2.50	0.46
1:D:32:ILE:O	1:D:219:LEU:HA	2.16	0.46
1:A:20:PHE:HD1	1:A:24:VAL:HG11	1.81	0.45
1:A:214:GLY:HA3	2:A:240:LBT:H6C1	1.99	0.45
1:D:73:MET:HA	1:D:217:ILE:O	2.17	0.45
1:B:214:GLY:HA3	2:B:240:LBT:H6C1	1.97	0.45
1:B:6:PHE:CZ	1:B:225:PHE:HB3	2.52	0.45
1:D:159:ALA:HB1	1:D:181:ASP:HB2	1.99	0.45
1:C:50:MET:HA	1:C:51:PRO:HD3	1.72	0.45
1:A:1:ALA:HB2	6:A:341:HOH:O	2.17	0.44
1:D:181:ASP:HB3	6:D:308:HOH:O	2.16	0.44
1:C:18:ILE:CG2	1:C:46:VAL:HG22	2.47	0.44
1:A:5:SER:HA	1:A:225:PHE:O	2.17	0.44
1:B:121:GLU:OE1	1:B:141:ASP:OD2	2.36	0.43
1:D:81:PRO:HA	1:D:216:GLN:HB3	2.00	0.43
1:A:100:SER:HA	6:A:357:HOH:O	2.18	0.43
1:A:7:ASN:OD1	1:A:224:SER:HB3	2.19	0.43

Continued on next page...

Continued from previous page...

Atom-1	Atom-2	Interatomic distance (Å)	Clash overlap (Å)
1:A:41:ASN:ND2	1:A:211:SER:HA	2.29	0.43
1:B:156:VAL:HG12	1:B:159:ALA:HB2	2.00	0.43
1:C:77:LYS:CD	1:C:77:LYS:N	2.79	0.43
1:D:39:LYS:HB3	1:D:39:LYS:HE2	1.66	0.43
1:D:59:THR:C	1:D:61:ASN:H	2.23	0.42
1:C:217:ILE:HG22	1:C:219:LEU:HG	2.01	0.42
1:C:5:SER:HA	1:C:225:PHE:O	2.20	0.42
1:D:151:VAL:CG2	1:D:152:PRO:HD2	2.50	0.41
1:C:81:PRO:HA	1:C:216:GLN:HB3	2.02	0.41
1:A:121:GLU:OE2	1:A:123:ASP:HB2	2.20	0.41
1:C:41:ASN:HA	1:C:210:GLY:O	2.21	0.41
1:C:125:TYR:CZ	3:C:240:LAT:H5	2.56	0.41
1:C:90:ALA:HB1	1:C:91:PRO:CD	2.49	0.41
1:C:203:LYS:HA	6:C:362:HOH:O	2.20	0.41
1:A:96:ILE:HA	1:A:97:PRO:HD3	1.96	0.41
1:A:32:ILE:O	1:A:219:LEU:HA	2.21	0.41
1:A:41:ASN:HA	1:A:210:GLY:O	2.22	0.40
1:B:41:ASN:ND2	1:B:211:SER:HA	2.36	0.40
1:B:198:LEU:HB3	1:B:199:PRO:HD2	2.03	0.40
1:A:132:ASP:HA	1:A:133:PRO:HD3	1.96	0.40
1:B:3:THR:HA	1:B:227:SER:O	2.22	0.40
1:B:5:SER:HA	1:B:225:PHE:O	2.21	0.40
1:D:174:LEU:O	1:D:189:ALA:HA	2.21	0.40
1:C:74:LYS:CE	1:D:10:SER:HB3	2.51	0.40

There are no symmetry-related clashes.

5.3 Torsion angles [i](#)

5.3.1 Protein backbone [i](#)

In the following table, the Percentiles column shows the percent Ramachandran outliers of the chain as a percentile score with respect to all X-ray entries followed by that with respect to entries of similar resolution.

The Analysed column shows the number of residues for which the backbone conformation was analysed, and the total number of residues.

Mol	Chain	Analysed	Favoured	Allowed	Outliers	Percentiles
1	A	230/236 (98%)	223 (97%)	6 (3%)	1 (0%)	39 43

Continued on next page...

Continued from previous page...

Mol	Chain	Analysed	Favoured	Allowed	Outliers	Percentiles	
1	B	230/236 (98%)	224 (97%)	5 (2%)	1 (0%)	39	43
1	C	230/236 (98%)	217 (94%)	13 (6%)	0	100	100
1	D	230/236 (98%)	220 (96%)	10 (4%)	0	100	100
All	All	920/944 (98%)	884 (96%)	34 (4%)	2 (0%)	52	61

All (2) Ramachandran outliers are listed below:

Mol	Chain	Res	Type
1	B	81	PRO
1	A	81	PRO

5.3.2 Protein sidechains ⓘ

In the following table, the Percentiles column shows the percent sidechain outliers of the chain as a percentile score with respect to all X-ray entries followed by that with respect to entries of similar resolution.

The Analysed column shows the number of residues for which the sidechain conformation was analysed, and the total number of residues.

Mol	Chain	Analysed	Rotameric	Outliers	Percentiles	
1	A	197/201 (98%)	194 (98%)	3 (2%)	72	82
1	B	197/201 (98%)	193 (98%)	4 (2%)	63	73
1	C	197/201 (98%)	190 (96%)	7 (4%)	42	51
1	D	197/201 (98%)	188 (95%)	9 (5%)	33	37
All	All	788/804 (98%)	765 (97%)	23 (3%)	50	60

All (23) residues with a non-rotameric sidechain are listed below:

Mol	Chain	Res	Type
1	A	53	ARG
1	A	83	ASP
1	A	182	ASN
1	B	53	ARG
1	B	54	ILE
1	B	64	SER
1	B	182	ASN
1	C	25	THR
1	C	46	VAL

Continued on next page...

Continued from previous page...

Mol	Chain	Res	Type
1	C	77	LYS
1	C	112	LYS
1	C	182	ASN
1	C	201	ARG
1	C	232	THR
1	D	5	SER
1	D	15	ASN
1	D	25	THR
1	D	37	LEU
1	D	68	SER
1	D	97	PRO
1	D	182	ASN
1	D	212	LEU
1	D	232	THR

Some sidechains can be flipped to improve hydrogen bonding and reduce clashes. All (29) such sidechains are listed below:

Mol	Chain	Res	Type
1	A	15	ASN
1	A	41	ASN
1	A	61	ASN
1	A	95	GLN
1	A	182	ASN
1	A	216	GLN
1	B	9	ASN
1	B	15	ASN
1	B	31	ASN
1	B	41	ASN
1	B	61	ASN
1	B	95	GLN
1	B	182	ASN
1	B	216	GLN
1	C	15	ASN
1	C	31	ASN
1	C	33	GLN
1	C	41	ASN
1	C	61	ASN
1	C	182	ASN
1	C	216	GLN
1	D	15	ASN
1	D	19	ASN
1	D	33	GLN

Continued on next page...

Continued from previous page...

Mol	Chain	Res	Type
1	D	41	ASN
1	D	61	ASN
1	D	95	GLN
1	D	182	ASN
1	D	216	GLN

5.3.3 RNA [i](#)

There are no RNA molecules in this entry.

5.4 Non-standard residues in protein, DNA, RNA chains [i](#)

There are no non-standard protein/DNA/RNA residues in this entry.

5.5 Carbohydrates [i](#)

There are no carbohydrates in this entry.

5.6 Ligand geometry [i](#)

Of 12 ligands modelled in this entry, 8 are monoatomic - leaving 4 for Mogul analysis.

In the following table, the Counts columns list the number of bonds (or angles) for which Mogul statistics could be retrieved, the number of bonds (or angles) that are observed in the model and the number of bonds (or angles) that are defined in the chemical component dictionary. The Link column lists molecule types, if any, to which the group is linked. The Z score for a bond length (or angle) is the number of standard deviations the observed value is removed from the expected value. A bond length (or angle) with $|Z| > 2$ is considered an outlier worth inspection. RMSZ is the root-mean-square of all Z scores of the bond lengths (or angles).

Mol	Type	Chain	Res	Link	Bond lengths			Bond angles		
					Counts	RMSZ	$\# Z > 2$	Counts	RMSZ	$\# Z > 2$
2	LBT	A	240	-	24,24,24	0.84	2 (8%)	35,35,35	1.50	6 (17%)
2	LBT	B	240	-	24,24,24	0.88	1 (4%)	35,35,35	2.19	9 (25%)
3	LAT	C	240	-	24,24,24	0.95	2 (8%)	35,35,35	1.83	12 (34%)
2	LBT	D	240	-	24,24,24	0.78	0	35,35,35	1.92	10 (28%)

In the following table, the Chirals column lists the number of chiral outliers, the number of chiral centers analysed, the number of these observed in the model and the number defined in the chemical component dictionary. Similar counts are reported in the Torsion and Rings columns. '-' means

no outliers of that kind were identified.

Mol	Type	Chain	Res	Link	Chirals	Torsions	Rings
2	LBT	A	240	-	-	0/8/48/48	0/2/2/2
2	LBT	B	240	-	-	0/8/48/48	0/2/2/2
3	LAT	C	240	-	-	0/8/48/48	0/2/2/2
2	LBT	D	240	-	-	0/8/48/48	0/2/2/2

All (5) bond length outliers are listed below:

Mol	Chain	Res	Type	Atoms	Z	Observed(Å)	Ideal(Å)
2	B	240	LBT	C1'-C2'	-2.28	1.48	1.52
2	A	240	LBT	O1'-C1'	2.14	1.47	1.39
2	A	240	LBT	O2'-C2'	2.36	1.48	1.43
3	C	240	LAT	O2'-C2'	2.39	1.48	1.43
3	C	240	LAT	O1'-C1'	2.40	1.47	1.39

All (37) bond angle outliers are listed below:

Mol	Chain	Res	Type	Atoms	Z	Observed(°)	Ideal(°)
2	A	240	LBT	O3'-C3'-C4'	-3.60	101.35	109.87
2	A	240	LBT	O1'-C1'-C2'	-2.70	101.98	109.21
3	C	240	LAT	C1-O1-C4'	-2.57	111.29	118.01
2	B	240	LBT	O3'-C3'-C4'	-2.51	103.93	109.87
2	D	240	LBT	O1-C1-O5	-2.38	104.67	110.68
2	D	240	LBT	O3'-C3'-C4'	-2.26	104.52	109.87
3	C	240	LAT	O3'-C3'-C2'	-2.26	105.25	110.34
2	B	240	LBT	O1-C1-C2	-2.02	103.18	108.10
3	C	240	LAT	O2-C2-C1	-2.02	105.59	110.02
2	D	240	LBT	O2-C2-C3	2.02	114.87	110.34
3	C	240	LAT	O2-C2-C3	2.02	114.89	110.34
2	B	240	LBT	C3'-C4'-C5'	2.11	115.61	110.84
2	A	240	LBT	O2'-C2'-C3'	2.15	115.17	110.34
3	C	240	LAT	O3-C3-C2	2.15	115.17	110.34
3	C	240	LAT	C4-C3-C2	2.20	114.89	110.79
3	C	240	LAT	O4-C4-C3	2.44	115.84	110.34
2	D	240	LBT	O5'-C1'-C2'	2.59	113.93	109.80
2	D	240	LBT	O1-C4'-C3'	2.69	114.11	107.17
2	D	240	LBT	C3'-C4'-C5'	2.90	117.40	110.84
3	C	240	LAT	C6-C5-C4	2.91	120.20	113.02
3	C	240	LAT	O5'-C1'-C2'	2.93	114.47	109.80
2	A	240	LBT	C1'-O5'-C5'	2.98	118.99	113.47
2	B	240	LBT	O1-C4'-C3'	3.00	114.91	107.17
3	C	240	LAT	C3'-C4'-C5'	3.01	117.64	110.84

Continued on next page...

Continued from previous page...

Mol	Chain	Res	Type	Atoms	Z	Observed(°)	Ideal(°)
2	A	240	LBT	O1-C4'-C5'	3.01	117.24	109.32
2	A	240	LBT	O4-C4-C3	3.03	117.15	110.34
3	C	240	LAT	O5-C1-C2	3.10	116.65	110.28
2	B	240	LBT	O2'-C2'-C1'	3.17	116.80	109.82
2	D	240	LBT	O2'-C2'-C3'	3.19	117.51	110.34
2	D	240	LBT	C1'-C2'-C3'	4.08	116.50	110.43
2	D	240	LBT	O2'-C2'-C1'	4.39	119.48	109.82
2	D	240	LBT	C1'-O5'-C5'	4.40	121.61	113.47
2	B	240	LBT	C1'-O5'-C5'	4.44	121.69	113.47
3	C	240	LAT	C1'-C2'-C3'	4.53	117.16	110.43
2	B	240	LBT	O2'-C2'-C3'	4.87	121.30	110.34
2	B	240	LBT	O5'-C1'-C2'	5.66	118.82	109.80
2	B	240	LBT	C1'-C2'-C3'	6.21	119.66	110.43

There are no chirality outliers.

There are no torsion outliers.

There are no ring outliers.

3 monomers are involved in 4 short contacts:

Mol	Chain	Res	Type	Clashes	Symm-Clashes
2	A	240	LBT	1	0
2	B	240	LBT	2	0
3	C	240	LAT	1	0

5.7 Other polymers [i](#)

There are no such residues in this entry.

5.8 Polymer linkage issues [i](#)

There are no chain breaks in this entry.

6 Fit of model and data [i](#)

6.1 Protein, DNA and RNA chains [i](#)

In the following table, the column labelled ‘#RSRZ> 2’ contains the number (and percentage) of RSRZ outliers, followed by percent RSRZ outliers for the chain as percentile scores relative to all X-ray entries and entries of similar resolution. The OWAB column contains the minimum, median, 95th percentile and maximum values of the occupancy-weighted average B-factor per residue. The column labelled ‘Q< 0.9’ lists the number of (and percentage) of residues with an average occupancy less than 0.9.

Mol	Chain	Analysed	<RSRZ>	#RSRZ>2	OWAB(Å ²)	Q<0.9
1	A	232/236 (98%)	-0.99	1 (0%) 93 93	7, 18, 35, 56	0
1	B	232/236 (98%)	-1.03	1 (0%) 93 93	7, 17, 33, 60	0
1	C	232/236 (98%)	-0.83	1 (0%) 93 93	8, 22, 38, 54	0
1	D	232/236 (98%)	-0.79	2 (0%) 85 87	8, 19, 40, 62	0
All	All	928/944 (98%)	-0.91	5 (0%) 91 92	7, 19, 37, 62	0

All (5) RSRZ outliers are listed below:

Mol	Chain	Res	Type	RSRZ
1	B	232	THR	4.6
1	D	232	THR	3.5
1	C	232	THR	2.9
1	A	232	THR	2.6
1	D	14	GLY	2.0

6.2 Non-standard residues in protein, DNA, RNA chains [i](#)

There are no non-standard protein/DNA/RNA residues in this entry.

6.3 Carbohydrates [i](#)

There are no carbohydrates in this entry.

6.4 Ligands [i](#)

In the following table, the Atoms column lists the number of modelled atoms in the group and the number defined in the chemical component dictionary. LLDF column lists the quality of electron density of the group with respect to its neighbouring residues in protein, DNA or RNA chains.

The B-factors column lists the minimum, median, 95th percentile and maximum values of B factors of atoms in the group. The column labelled 'Q< 0.9' lists the number of atoms with occupancy less than 0.9.

Mol	Type	Chain	Res	Atoms	RSCC	RSR	LLDF	B-factors(Å ²)	Q<0.9
3	LAT	C	240	23/23	0.85	0.20	5.61	38,47,55,57	0
5	MN	D	238	1/1	0.98	0.15	4.99	35,35,35,35	0
5	MN	B	238	1/1	0.96	0.11	3.37	34,34,34,34	0
2	LBT	D	240	23/23	0.89	0.17	2.94	23,34,51,53	0
5	MN	A	238	1/1	0.98	0.09	1.14	35,35,35,35	0
2	LBT	B	240	23/23	0.93	0.11	1.11	17,25,45,51	0
5	MN	C	238	1/1	0.96	0.10	0.86	37,37,37,37	0
2	LBT	A	240	23/23	0.93	0.11	0.86	18,24,39,42	0
4	CA	A	237	1/1	0.99	0.07	-0.41	16,16,16,16	0
4	CA	B	237	1/1	0.98	0.06	-1.62	16,16,16,16	0
4	CA	C	237	1/1	0.97	0.07	-2.50	18,18,18,18	0
4	CA	D	237	1/1	0.98	0.04	-3.29	17,17,17,17	0

6.5 Other polymers [i](#)

There are no such residues in this entry.