



Full wwPDB X-ray Structure Validation Report ⓘ

Feb 1, 2016 – 07:37 PM GMT

PDB ID : 4PGH
Title : Caffeic acid O-methyltransferase from Sorghum bicolor
Authors : Green, A.R.; Lewis, K.M.; Kang, C.
Deposited on : 2014-05-02
Resolution : 2.80 Å(reported)

This is a Full wwPDB X-ray Structure Validation Report for a publicly released PDB entry.
We welcome your comments at validation@mail.wwpdb.org
A user guide is available at
<http://wwpdb.org/validation/2016/XrayValidationReportHelp>
with specific help available everywhere you see the ⓘ symbol.

The following versions of software and data (see [references ⓘ](#)) were used in the production of this report:

MolProbity : 4.02b-467
Mogul : 1.7 (RC4), CSD as536be (2015)
Xtriage (Phenix) : 1.9-1692
EDS : rb-20026688
Percentile statistics : 20151230.v01 (using entries in the PDB archive December 30th 2015)
Refmac : 5.8.0135
CCP4 : 6.5.0
Ideal geometry (proteins) : Engh & Huber (2001)
Ideal geometry (DNA, RNA) : Parkinson et al. (1996)
Validation Pipeline (wwPDB-VP) : trunk26865

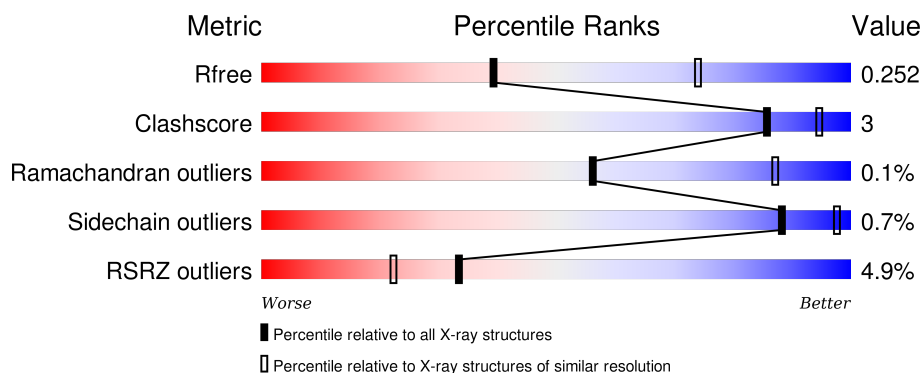
1 Overall quality at a glance

The following experimental techniques were used to determine the structure:

X-RAY DIFFRACTION

The reported resolution of this entry is 2.80 Å.

Percentile scores (ranging between 0-100) for global validation metrics of the entry are shown in the following graphic. The table shows the number of entries on which the scores are based.



Metric	Whole archive (#Entries)	Similar resolution (#Entries, resolution range(Å))
R_{free}	91344	2393 (2.80-2.80)
Clashscore	102246	2827 (2.80-2.80)
Ramachandran outliers	100387	2782 (2.80-2.80)
Sidechain outliers	100360	2784 (2.80-2.80)
RSRZ outliers	91569	2404 (2.80-2.80)

The table below summarises the geometric issues observed across the polymeric chains and their fit to the electron density. The red, orange, yellow and green segments on the lower bar indicate the fraction of residues that contain outliers for ≥ 3 , 2, 1 and 0 types of geometric quality criteria. A grey segment represents the fraction of residues that are not modelled. The numeric value for each fraction is indicated below the corresponding segment, with a dot representing fractions $\leq 5\%$. The upper red bar (where present) indicates the fraction of residues that have poor fit to the electron density. The numeric value is given above the bar.

Mol	Chain	Length	Quality of chain
1	A	358	<div> <div>94%</div> <div>5%</div> </div>
1	B	358	<div> <div>%</div> <div>93%</div> <div>6%</div> </div>
1	C	358	<div> <div>91%</div> <div>8%</div> </div>
1	D	358	<div> <div>18%</div> <div>88%</div> <div>12%</div> </div>

2 Entry composition [i](#)

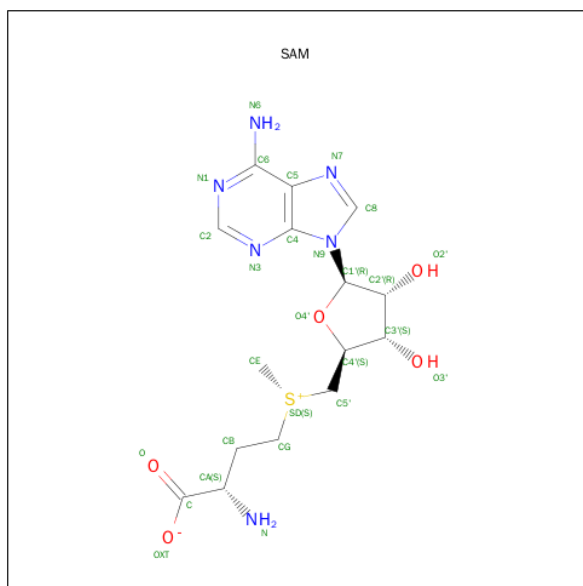
There are 3 unique types of molecules in this entry. The entry contains 10719 atoms, of which 0 are hydrogens and 0 are deuteriums.

In the tables below, the ZeroOcc column contains the number of atoms modelled with zero occupancy, the AltConf column contains the number of residues with at least one atom in alternate conformation and the Trace column contains the number of residues modelled with at most 2 atoms.

- Molecule 1 is a protein called Caffeic acid O-methyltransferase.

Mol	Chain	Residues	Atoms					ZeroOcc	AltConf	Trace
1	A	354	Total	C	N	O	S	0	0	0
			2616	1675	438	483	20			
1	B	357	Total	C	N	O	S	0	0	0
			2533	1608	436	469	20			
1	C	353	Total	C	N	O	S	0	0	0
			2612	1670	437	485	20			
1	D	358	Total	C	N	O	S	0	0	0
			2636	1688	443	485	20			

- Molecule 2 is S-ADENOSYLMETHIONINE (three-letter code: SAM) (formula: C₁₅H₂₂N₆O₅S).



Mol	Chain	Residues	Atoms					ZeroOcc	AltConf
2	A	1	Total	C	N	O	S	0	0
			27	15	6	5	1		
2	B	1	Total	C	N	O	S	0	0
			27	15	6	5	1		

Continued on next page...

Continued from previous page...

Mol	Chain	Residues	Atoms					ZeroOcc	AltConf
2	C	1	Total	C	N	O	S	0	0
			27	15	6	5	1		
2	D	1	Total	C	N	O	S	0	0
			27	15	6	5	1		

- Molecule 3 is water.

Mol	Chain	Residues	Atoms		ZeroOcc	AltConf
3	A	62	Total	O	0	0
			62	62		
3	B	43	Total	O	0	0
			43	43		
3	C	78	Total	O	0	0
			78	78		
3	D	31	Total	O	0	0
			31	31		

3 Residue-property plots [i](#)

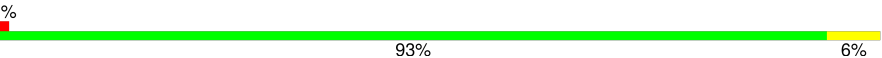
These plots are drawn for all protein, RNA and DNA chains in the entry. The first graphic for a chain summarises the proportions of errors displayed in the second graphic. The second graphic shows the sequence view annotated by issues in geometry and electron density. Residues are color-coded according to the number of geometric quality criteria for which they contain at least one outlier: green = 0, yellow = 1, orange = 2 and red = 3 or more. A red dot above a residue indicates a poor fit to the electron density ($RSRZ > 2$). Stretches of 2 or more consecutive residues without any outlier are shown as a green connector. Residues present in the sample, but not in the model, are shown in grey.

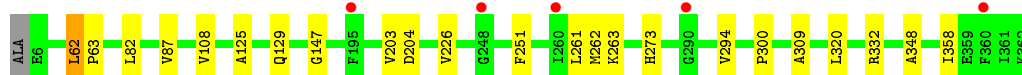
- Molecule 1: Caffeic acid O-methyltransferase

Chain A: 



- Molecule 1: Caffeic acid O-methyltransferase

Chain B: 




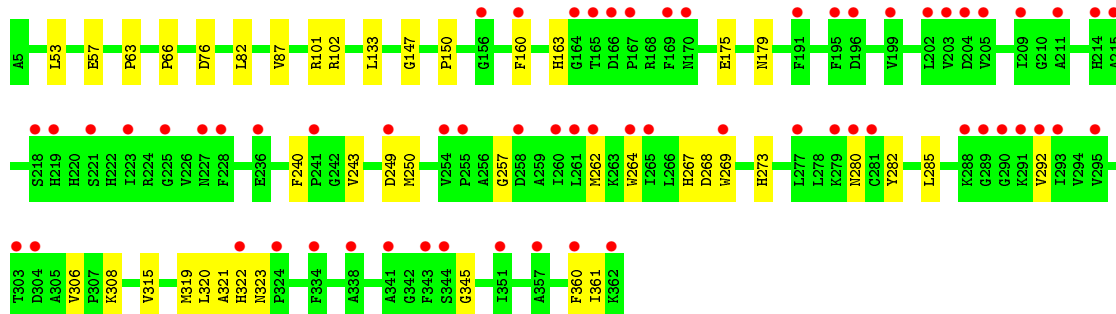
- Molecule 1: Caffeic acid O-methyltransferase

Chain C: 



- Molecule 1: Caffeic acid O-methyltransferase

Chain D: 



4 Data and refinement statistics

Property	Value	Source
Space group	P 1 21 1	Depositor
Cell constants a, b, c, α , β , γ	76.78Å 63.90Å 152.47Å 90.00° 93.02° 90.00°	Depositor
Resolution (Å)	48.94 – 2.80 49.09 – 2.80	Depositor EDS
% Data completeness (in resolution range)	99.5 (48.94-2.80) 97.3 (49.09-2.80)	Depositor EDS
R_{merge}	0.06	Depositor
R_{sym}	(Not available)	Depositor
$\langle I/\sigma(I) \rangle$ ¹	6.63 (at 2.81Å)	Xtriage
Refinement program	PHENIX (phenix.refine: 1.8.4_1496)	Depositor
R, R_{free}	0.204 , 0.252 0.202 , 0.252	Depositor DCC
R_{free} test set	1949 reflections (5.45%)	DCC
Wilson B-factor (Å ²)	59.3	Xtriage
Anisotropy	0.420	Xtriage
Bulk solvent k_{sol} (e/Å ³), B_{sol} (Å ²)	0.26 , 47.6	EDS
Estimated twinning fraction	No twinning to report.	Xtriage
L-test for twinning ²	$\langle L \rangle = 0.49$, $\langle L^2 \rangle = 0.32$	Xtriage
Outliers	1 of 36642 reflections (0.003%)	Xtriage
F_o, F_c correlation	0.94	EDS
Total number of atoms	10719	wwPDB-VP
Average B, all atoms (Å ²)	69.0	wwPDB-VP

Xtriage's analysis on translational NCS is as follows: *The analyses of the Patterson function reveals a significant off-origin peak that is 53.72 % of the origin peak, indicating pseudo translational symmetry. The chance of finding a peak of this or larger height randomly in a structure without pseudo translational symmetry is equal to 4.0461e-05. The detected translational NCS is most likely also responsible for the elevated intensity ratio.*

¹ Intensities estimated from amplitudes.

² Theoretical values of $\langle |L| \rangle$, $\langle L^2 \rangle$ for acentric reflections are 0.5, 0.375 respectively for untwinned datasets, and 0.333, 0.2 for perfectly twinned datasets.

5 Model quality [i](#)

5.1 Standard geometry [i](#)

Bond lengths and bond angles in the following residue types are not validated in this section: SAM

The Z score for a bond length (or angle) is the number of standard deviations the observed value is removed from the expected value. A bond length (or angle) with $|Z| > 5$ is considered an outlier worth inspection. RMSZ is the root-mean-square of all Z scores of the bond lengths (or angles).

Mol	Chain	Bond lengths		Bond angles	
		RMSZ	$\# Z > 5$	RMSZ	$\# Z > 5$
1	A	0.20	0/2680	0.35	0/3655
1	B	0.20	0/2595	0.34	0/3551
1	C	0.20	0/2676	0.35	0/3652
1	D	0.20	0/2700	0.35	0/3684
All	All	0.20	0/10651	0.35	0/14542

There are no bond length outliers.

There are no bond angle outliers.

There are no chirality outliers.

There are no planarity outliers.

5.2 Too-close contacts [i](#)

In the following table, the Non-H and H(model) columns list the number of non-hydrogen atoms and hydrogen atoms in the chain respectively. The H(added) column lists the number of hydrogen atoms added and optimized by MolProbity. The Clashes column lists the number of clashes within the asymmetric unit, whereas Symm-Clashes lists symmetry related clashes.

Mol	Chain	Non-H	H(model)	H(added)	Clashes	Symm-Clashes
1	A	2616	0	2436	11	0
1	B	2533	0	2220	14	0
1	C	2612	0	2426	16	0
1	D	2636	0	2496	23	0
2	A	27	0	22	0	0
2	B	27	0	22	1	0
2	C	27	0	22	0	0
2	D	27	0	22	0	0
3	A	62	0	0	1	0

Continued on next page...

Continued from previous page...

Mol	Chain	Non-H	H(model)	H(added)	Clashes	Symm-Clashes
3	B	43	0	0	0	0
3	C	78	0	0	4	0
3	D	31	0	0	0	0
All	All	10719	0	9666	57	0

The all-atom clashscore is defined as the number of clashes found per 1000 atoms (including hydrogen atoms). The all-atom clashscore for this structure is 3.

All (57) close contacts within the same asymmetric unit are listed below, sorted by their clash magnitude.

Atom-1	Atom-2	Interatomic distance (Å)	Clash overlap (Å)
1:D:250:MET:O	1:D:280:ASN:ND2	2.23	0.71
1:C:229:ASP:O	3:C:553:HOH:O	2.11	0.69
1:C:248:GLY:N	3:C:553:HOH:O	2.24	0.67
1:D:306:VAL:HG22	1:D:308:LYS:H	1.63	0.64
1:D:76:ASP:OD2	1:D:101:ARG:NH2	2.30	0.61
1:B:263:LYS:NZ	2:B:401:SAM:OXT	2.34	0.60
1:C:345:GLY:HA3	1:C:361:ILE:HB	1.83	0.59
1:A:327:ARG:NH2	3:A:511:HOH:O	2.38	0.57
1:D:268:ASP:OD1	1:D:323:ASN:ND2	2.39	0.56
1:D:82:LEU:HB3	1:D:87:VAL:HB	1.89	0.55
1:A:262:MET:HG3	1:A:265:ILE:HB	1.89	0.54
1:B:203:VAL:HG22	1:B:226:VAL:HB	1.91	0.53
1:C:10:ALA:N	3:C:513:HOH:O	2.42	0.53
1:D:285:LEU:HD11	1:D:292:VAL:HG23	1.90	0.52
1:C:248:GLY:O	3:C:553:HOH:O	2.18	0.50
1:D:150:PRO:HG2	1:D:321:ALA:HA	1.92	0.50
1:D:240:PHE:HB2	1:D:243:VAL:HB	1.93	0.50
1:A:345:GLY:HA3	1:A:361:ILE:HB	1.94	0.50
1:D:249:ASP:N	1:D:249:ASP:OD1	2.44	0.50
1:B:82:LEU:HB3	1:B:87:VAL:HB	1.93	0.50
1:C:74:MET:HG2	1:D:320:LEU:HD11	1.93	0.50
1:B:251:PHE:HE1	1:B:273:HIS:HB3	1.76	0.49
1:C:145:LEU:HA	1:D:66:PRO:HB3	1.94	0.48
1:D:269:TRP:HB3	1:D:273:HIS:HB2	1.94	0.48
1:B:204:ASP:HA	1:B:261:LEU:HB3	1.93	0.48
1:A:82:LEU:HB3	1:A:87:VAL:HB	1.94	0.48
1:D:345:GLY:N	1:D:361:ILE:O	2.47	0.48
1:D:175:GLU:O	1:D:179:ASN:ND2	2.40	0.47
1:C:262:MET:HG3	1:C:265:ILE:HB	1.97	0.47
1:C:82:LEU:HB3	1:C:87:VAL:HB	1.95	0.47

Continued on next page...

Continued from previous page...

Atom-1	Atom-2	Interatomic distance (Å)	Clash overlap (Å)
1:C:150:PRO:HG2	1:C:321:ALA:HA	1.97	0.46
1:C:323:ASN:HA	1:C:324:PRO:HD3	1.81	0.46
1:A:16:ALA:HB1	1:B:108:VAL:HA	1.98	0.46
1:D:315:VAL:O	1:D:319:MET:HG2	2.16	0.45
1:C:189:LEU:HD21	1:C:216:ILE:HG12	1.97	0.45
1:A:170:ASN:O	1:A:174:ASN:ND2	2.29	0.45
1:B:125:ALA:O	1:B:129:GLN:NE2	2.49	0.45
1:A:200:SER:OG	1:A:258:ASP:OD1	2.33	0.45
1:D:264:TRP:HB3	1:D:267:HIS:HE1	1.82	0.45
1:B:348:ALA:HA	1:B:358:ILE:HA	1.98	0.45
1:A:68:ASN:ND2	1:B:147:GLY:HA2	2.32	0.44
1:D:57:GLU:OE2	1:D:102:ARG:NH2	2.50	0.44
1:D:133:LEU:HD22	1:D:322:HIS:CD2	2.53	0.43
1:B:62:LEU:HG	1:B:63:PRO:HD2	2.00	0.43
1:C:170:ASN:OD1	1:C:174:ASN:ND2	2.51	0.43
1:D:292:VAL:HB	1:D:360:PHE:HB2	2.01	0.42
1:A:74:MET:HG2	1:B:320:LEU:HD11	2.00	0.42
1:A:27:SER:O	1:A:31:MET:HG2	2.19	0.42
1:B:262:MET:HB2	1:B:294:VAL:HG22	2.00	0.42
1:D:262:MET:HB2	1:D:262:MET:HE3	1.85	0.42
1:B:300:PRO:HG2	1:B:309:ALA:HA	2.01	0.42
1:D:257:GLY:O	1:D:285:LEU:HD23	2.21	0.41
1:C:292:VAL:HB	1:C:360:PHE:HB2	2.02	0.41
1:D:160:PHE:HA	1:D:163:HIS:CE1	2.56	0.40
1:A:94:ASP:CG	1:B:332:ARG:HH22	2.25	0.40
1:C:299:LEU:HD23	1:C:312:VAL:HG12	2.03	0.40
1:C:68:ASN:ND2	1:D:147:GLY:HA2	2.35	0.40

There are no symmetry-related clashes.

5.3 Torsion angles ⓘ

5.3.1 Protein backbone ⓘ

In the following table, the Percentiles column shows the percent Ramachandran outliers of the chain as a percentile score with respect to all X-ray entries followed by that with respect to entries of similar resolution.

The Analysed column shows the number of residues for which the backbone conformation was analysed, and the total number of residues.

Mol	Chain	Analysed	Favoured	Allowed	Outliers	Percentiles	
1	A	352/358 (98%)	343 (97%)	9 (3%)	0	100	100
1	B	355/358 (99%)	347 (98%)	8 (2%)	0	100	100
1	C	351/358 (98%)	338 (96%)	13 (4%)	0	100	100
1	D	356/358 (99%)	342 (96%)	13 (4%)	1 (0%)	46	79
All	All	1414/1432 (99%)	1370 (97%)	43 (3%)	1 (0%)	56	87

All (1) Ramachandran outliers are listed below:

Mol	Chain	Res	Type
1	D	63	PRO

5.3.2 Protein sidechains ⓘ

In the following table, the Percentiles column shows the percent sidechain outliers of the chain as a percentile score with respect to all X-ray entries followed by that with respect to entries of similar resolution.

The Analysed column shows the number of residues for which the sidechain conformation was analysed, and the total number of residues.

Mol	Chain	Analysed	Rotameric	Outliers	Percentiles	
1	A	243/287 (85%)	243 (100%)	0	100	100
1	B	213/287 (74%)	212 (100%)	1 (0%)	92	98
1	C	244/287 (85%)	240 (98%)	4 (2%)	70	93
1	D	255/287 (89%)	253 (99%)	2 (1%)	86	97
All	All	955/1148 (83%)	948 (99%)	7 (1%)	88	97

All (7) residues with a non-rotameric sidechain are listed below:

Mol	Chain	Res	Type
1	B	62	LEU
1	C	81	LEU
1	C	119	VAL
1	C	267	HIS
1	C	303	THR
1	D	53	LEU
1	D	282	TYR

Some sidechains can be flipped to improve hydrogen bonding and reduce clashes. All (1) such sidechains are listed below:

Mol	Chain	Res	Type
1	D	267	HIS

5.3.3 RNA [i](#)

There are no RNA molecules in this entry.

5.4 Non-standard residues in protein, DNA, RNA chains [i](#)

There are no non-standard protein/DNA/RNA residues in this entry.

5.5 Carbohydrates [i](#)

There are no carbohydrates in this entry.

5.6 Ligand geometry [i](#)

4 ligands are modelled in this entry.

In the following table, the Counts columns list the number of bonds (or angles) for which Mogul statistics could be retrieved, the number of bonds (or angles) that are observed in the model and the number of bonds (or angles) that are defined in the chemical component dictionary. The Link column lists molecule types, if any, to which the group is linked. The Z score for a bond length (or angle) is the number of standard deviations the observed value is removed from the expected value. A bond length (or angle) with $|Z| > 2$ is considered an outlier worth inspection. RMSZ is the root-mean-square of all Z scores of the bond lengths (or angles).

Mol	Type	Chain	Res	Link	Bond lengths			Bond angles		
					Counts	RMSZ	$\# Z > 2$	Counts	RMSZ	$\# Z > 2$
2	SAM	A	401	-	21,29,29	1.60	3 (14%)	17,42,42	2.72	7 (41%)
2	SAM	B	401	-	21,29,29	1.65	3 (14%)	17,42,42	2.66	6 (35%)
2	SAM	C	401	-	21,29,29	1.57	3 (14%)	17,42,42	2.61	7 (41%)
2	SAM	D	401	-	21,29,29	1.53	3 (14%)	17,42,42	2.97	7 (41%)

In the following table, the Chirals column lists the number of chiral outliers, the number of chiral centers analysed, the number of these observed in the model and the number defined in the chemical component dictionary. Similar counts are reported in the Torsion and Rings columns. '-' means no outliers of that kind were identified.

Mol	Type	Chain	Res	Link	Chirals	Torsions	Rings
2	SAM	A	401	-	-	0/8/33/33	0/3/3/3

Continued on next page...

Continued from previous page...

Mol	Type	Chain	Res	Link	Chirals	Torsions	Rings
2	SAM	B	401	-	-	0/8/33/33	0/3/3/3
2	SAM	C	401	-	-	0/8/33/33	0/3/3/3
2	SAM	D	401	-	-	0/8/33/33	0/3/3/3

All (12) bond length outliers are listed below:

Mol	Chain	Res	Type	Atoms	Z	Observed(Å)	Ideal(Å)
2	C	401	SAM	C6-N6	2.79	1.43	1.34
2	B	401	SAM	C6-N6	2.79	1.43	1.34
2	A	401	SAM	C6-N6	2.87	1.43	1.34
2	D	401	SAM	C6-N6	2.88	1.43	1.34
2	C	401	SAM	CG-CB	3.45	1.56	1.52
2	B	401	SAM	CG-CB	3.52	1.56	1.52
2	D	401	SAM	CG-CB	3.57	1.56	1.52
2	A	401	SAM	CG-CB	3.61	1.56	1.52
2	D	401	SAM	O4'-C1'	4.03	1.46	1.41
2	C	401	SAM	O4'-C1'	4.45	1.46	1.41
2	A	401	SAM	O4'-C1'	4.52	1.46	1.41
2	B	401	SAM	O4'-C1'	4.72	1.47	1.41

All (27) bond angle outliers are listed below:

Mol	Chain	Res	Type	Atoms	Z	Observed(°)	Ideal(°)
2	D	401	SAM	N3-C2-N1	-9.04	121.97	128.89
2	C	401	SAM	N3-C2-N1	-8.54	122.36	128.89
2	A	401	SAM	N3-C2-N1	-8.51	122.38	128.89
2	B	401	SAM	N3-C2-N1	-8.16	122.65	128.89
2	D	401	SAM	C4'-O4'-C1'	-5.08	104.14	109.72
2	A	401	SAM	C4'-O4'-C1'	-4.07	105.25	109.72
2	D	401	SAM	C1'-N9-C4	-3.77	121.25	126.94
2	B	401	SAM	C1'-N9-C4	-3.61	121.50	126.94
2	B	401	SAM	C2'-C1'-N9	-3.39	109.12	114.29
2	C	401	SAM	C2'-C1'-N9	-2.80	110.01	114.29
2	A	401	SAM	C1'-N9-C4	-2.80	122.72	126.94
2	A	401	SAM	C4-C5-N7	-2.66	107.04	109.48
2	B	401	SAM	C4-C5-N7	-2.64	107.05	109.48
2	C	401	SAM	C4-C5-N7	-2.60	107.09	109.48
2	C	401	SAM	C4'-O4'-C1'	-2.54	106.93	109.72
2	D	401	SAM	C2'-C1'-N9	-2.51	110.46	114.29
2	C	401	SAM	C1'-N9-C4	-2.41	123.30	126.94
2	D	401	SAM	C4-C5-N7	-2.34	107.33	109.48
2	A	401	SAM	C2'-C1'-N9	-2.24	110.86	114.29

Continued on next page...

Continued from previous page...

Mol	Chain	Res	Type	Atoms	Z	Observed(°)	Ideal(°)
2	B	401	SAM	CE-SD-C5'	2.09	119.01	99.84
2	C	401	SAM	CE-SD-CG	2.10	119.18	99.84
2	C	401	SAM	CE-SD-C5'	2.13	119.39	99.84
2	D	401	SAM	CE-SD-CG	2.13	119.45	99.84
2	A	401	SAM	CE-SD-CG	2.13	119.46	99.84
2	B	401	SAM	CE-SD-CG	2.14	119.55	99.84
2	A	401	SAM	CE-SD-C5'	2.14	119.55	99.84
2	D	401	SAM	CE-SD-C5'	2.20	120.09	99.84

There are no chirality outliers.

There are no torsion outliers.

There are no ring outliers.

1 monomer is involved in 1 short contact:

Mol	Chain	Res	Type	Clashes	Symm-Clashes
2	B	401	SAM	1	0

5.7 Other polymers [i](#)

There are no such residues in this entry.

5.8 Polymer linkage issues [i](#)

There are no chain breaks in this entry.

6 Fit of model and data ⓘ

6.1 Protein, DNA and RNA chains ⓘ

In the following table, the column labelled ‘#RSRZ> 2’ contains the number (and percentage) of RSRZ outliers, followed by percent RSRZ outliers for the chain as percentile scores relative to all X-ray entries and entries of similar resolution. The OWAB column contains the minimum, median, 95th percentile and maximum values of the occupancy-weighted average B-factor per residue. The column labelled ‘Q< 0.9’ lists the number of (and percentage) of residues with an average occupancy less than 0.9.

Mol	Chain	Analysed	<RSRZ>	#RSRZ>2	OWAB(Å ²)	Q<0.9
1	A	354/358 (98%)	-0.37	0 100 100	32, 53, 90, 108	0
1	B	357/358 (99%)	-0.10	5 (1%) 78 69	29, 69, 103, 130	0
1	C	353/358 (98%)	-0.33	1 (0%) 94 92	37, 56, 93, 154	0
1	D	358/358 (100%)	0.71	63 (17%) 2 1	33, 95, 149, 166	0
All	All	1422/1432 (99%)	-0.02	69 (4%) 33 22	29, 63, 127, 166	0

All (69) RSRZ outliers are listed below:

Mol	Chain	Res	Type	RSRZ
1	D	290	GLY	10.8
1	D	204	ASP	6.8
1	D	164	GLY	6.7
1	D	281	CYS	5.6
1	D	249	ASP	5.2
1	D	205	VAL	5.2
1	D	160	PHE	5.0
1	D	360	PHE	4.8
1	D	277	LEU	4.8
1	D	293	ILE	4.8
1	D	304	ASP	4.8
1	D	338	ALA	4.7
1	D	221	SER	4.7
1	D	291	LYS	4.4
1	D	260	ILE	4.3
1	D	262	MET	4.3
1	D	202	LEU	4.1
1	B	195	PHE	4.0
1	D	280	ASN	4.0
1	D	288	LYS	4.0
1	D	211	ALA	3.9

Continued on next page...

Continued from previous page...

Mol	Chain	Res	Type	RSRZ
1	D	228	PHE	3.9
1	D	258	ASP	3.8
1	D	295	VAL	3.8
1	B	360	PHE	3.8
1	D	289	GLY	3.7
1	D	166	ASP	3.6
1	D	165	THR	3.6
1	D	241	PRO	3.6
1	D	265	ILE	3.4
1	D	199	VAL	3.4
1	D	227	ASN	3.4
1	D	170	ASN	3.3
1	D	203	VAL	3.2
1	D	169	PHE	3.2
1	D	292	VAL	3.2
1	D	215	ALA	3.2
1	D	209	ILE	3.1
1	D	303	THR	3.1
1	D	362	LYS	3.1
1	D	195	PHE	3.0
1	D	343	PHE	2.8
1	D	344	SER	2.8
1	D	223	ILE	2.7
1	D	254	VAL	2.7
1	D	167	PRO	2.6
1	D	261	LEU	2.6
1	D	351	ILE	2.5
1	D	214	HIS	2.5
1	B	290	GLY	2.5
1	D	357	ALA	2.5
1	D	218	SER	2.4
1	D	322	HIS	2.4
1	D	341	ALA	2.4
1	D	269	TRP	2.4
1	B	248	GLY	2.4
1	D	264	TRP	2.3
1	D	334	PHE	2.3
1	D	255	PRO	2.3
1	D	219	HIS	2.3
1	C	96	ASP	2.2
1	D	279	LYS	2.2
1	D	156	GLY	2.1

Continued on next page...

Continued from previous page...

Mol	Chain	Res	Type	RSRZ
1	D	324	PRO	2.1
1	D	191	PHE	2.1
1	B	260	ILE	2.1
1	D	225	GLY	2.1
1	D	236	GLU	2.0
1	D	196	ASP	2.0

6.2 Non-standard residues in protein, DNA, RNA chains [i](#)

There are no non-standard protein/DNA/RNA residues in this entry.

6.3 Carbohydrates [i](#)

There are no carbohydrates in this entry.

6.4 Ligands [i](#)

In the following table, the Atoms column lists the number of modelled atoms in the group and the number defined in the chemical component dictionary. LLDF column lists the quality of electron density of the group with respect to its neighbouring residues in protein, DNA or RNA chains. The B-factors column lists the minimum, median, 95th percentile and maximum values of B factors of atoms in the group. The column labelled 'Q< 0.9' lists the number of atoms with occupancy less than 0.9.

Mol	Type	Chain	Res	Atoms	RSCC	RSR	LLDF	B-factors(\AA^2)	Q<0.9
2	SAM	B	401	27/27	0.81	0.36	1.78	93,104,108,110	0
2	SAM	A	401	27/27	0.95	0.18	0.50	44,55,77,81	0
2	SAM	D	401	27/27	0.76	0.39	0.24	124,145,169,179	0
2	SAM	C	401	27/27	0.95	0.17	0.16	48,58,80,90	0

6.5 Other polymers [i](#)

There are no such residues in this entry.