



Full wwPDB X-ray Structure Validation Report ⓘ

Feb 1, 2016 – 11:36 AM GMT

PDB ID : 3PHB
Title : Crystal Structure of human purine nucleoside phosphorylase in complex with DADMe-ImmG
Authors : Ho, M.; Cassera, M.B.; Murkin, A.S.; Almo, S.C.; Schramm, V.L.
Deposited on : 2010-11-03
Resolution : 2.30 Å(reported)

This is a Full wwPDB X-ray Structure Validation Report for a publicly released PDB entry.
We welcome your comments at validation@mail.wwpdb.org
A user guide is available at
<http://wwpdb.org/validation/2016/XrayValidationReportHelp>
with specific help available everywhere you see the ⓘ symbol.

The following versions of software and data (see [references ⓘ](#)) were used in the production of this report:

MolProbity : 4.02b-467
Mogul : 1.7 (RC4), CSD as536be (2015)
Xtriage (Phenix) : 1.9-1692
EDS : rb-20026688
Percentile statistics : 20151230.v01 (using entries in the PDB archive December 30th 2015)
Refmac : 5.8.0135
CCP4 : 6.5.0
Ideal geometry (proteins) : Engh & Huber (2001)
Ideal geometry (DNA, RNA) : Parkinson et al. (1996)
Validation Pipeline (wwPDB-VP) : trunk26865

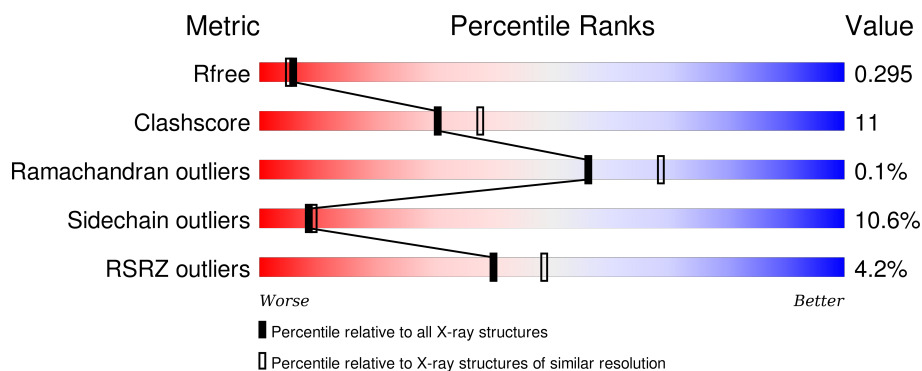
1 Overall quality at a glance

The following experimental techniques were used to determine the structure:

X-RAY DIFFRACTION

The reported resolution of this entry is 2.30 Å.

Percentile scores (ranging between 0-100) for global validation metrics of the entry are shown in the following graphic. The table shows the number of entries on which the scores are based.



Metric	Whole archive (#Entries)	Similar resolution (#Entries, resolution range(Å))
R_{free}	91344	3852 (2.30-2.30)
Clashscore	102246	4452 (2.30-2.30)
Ramachandran outliers	100387	4410 (2.30-2.30)
Sidechain outliers	100360	4409 (2.30-2.30)
RSRZ outliers	91569	3857 (2.30-2.30)

The table below summarises the geometric issues observed across the polymeric chains and their fit to the electron density. The red, orange, yellow and green segments on the lower bar indicate the fraction of residues that contain outliers for ≥ 3 , 2, 1 and 0 types of geometric quality criteria. A grey segment represents the fraction of residues that are not modelled. The numeric value for each fraction is indicated below the corresponding segment, with a dot representing fractions $\leq 5\%$. The upper red bar (where present) indicates the fraction of residues that have poor fit to the electron density. The numeric value is given above the bar.

Mol	Chain	Length	Quality of chain
1	E	324	<div> <div>3%</div> <div>64% 21% 5% 11%</div> </div>
1	Q	324	<div> <div>2%</div> <div>62% 22% • 11%</div> </div>
1	S	324	<div> <div>5%</div> <div>65% 19% • 12%</div> </div>
1	T	324	<div> <div>4%</div> <div>69% 16% • 11%</div> </div>
1	U	324	<div> <div>6%</div> <div>63% 22% • 12%</div> </div>

Continued on next page...

Continued from previous page...

Mol	Chain	Length	Quality of chain
1	Y	324	

The following table lists non-polymeric compounds, carbohydrate monomers and non-standard residues in protein, DNA, RNA chains that are outliers for geometric or electron-density-fit criteria:

Mol	Type	Chain	Res	Chirality	Geometry	Clashes	Electron density
3	PO4	S	290	-	-	-	X

2 Entry composition

There are 4 unique types of molecules in this entry. The entry contains 13732 atoms, of which 0 are hydrogens and 0 are deuteriums.

In the tables below, the ZeroOcc column contains the number of atoms modelled with zero occupancy, the AltConf column contains the number of residues with at least one atom in alternate conformation and the Trace column contains the number of residues modelled with at most 2 atoms.

- Molecule 1 is a protein called Purine nucleoside phosphorylase.

Mol	Chain	Residues	Atoms					ZeroOcc	AltConf	Trace
1	E	288	Total	C	N	O	S	0	0	0
			2252	1433	393	410	16			
1	Q	287	Total	C	N	O	S	0	1	0
			2256	1434	396	410	16			
1	S	286	Total	C	N	O	S	0	0	0
			2238	1424	391	407	16			
1	T	287	Total	C	N	O	S	0	0	0
			2245	1428	392	409	16			
1	U	285	Total	C	N	O	S	0	1	0
			2241	1424	395	407	15			
1	Y	285	Total	C	N	O	S	0	0	0
			2230	1418	390	406	16			

There are 216 discrepancies between the modelled and reference sequences:

Chain	Residue	Modelled	Actual	Comment	Reference
E	-34	MET	-	EXPRESSION TAG	UNP P00491
E	-33	ARG	-	EXPRESSION TAG	UNP P00491
E	-32	GLY	-	EXPRESSION TAG	UNP P00491
E	-31	SER	-	EXPRESSION TAG	UNP P00491
E	-30	HIS	-	EXPRESSION TAG	UNP P00491
E	-29	HIS	-	EXPRESSION TAG	UNP P00491
E	-28	HIS	-	EXPRESSION TAG	UNP P00491
E	-27	HIS	-	EXPRESSION TAG	UNP P00491
E	-26	HIS	-	EXPRESSION TAG	UNP P00491
E	-25	HIS	-	EXPRESSION TAG	UNP P00491
E	-24	GLY	-	EXPRESSION TAG	UNP P00491
E	-23	MET	-	EXPRESSION TAG	UNP P00491
E	-22	ALA	-	EXPRESSION TAG	UNP P00491
E	-21	SER	-	EXPRESSION TAG	UNP P00491
E	-20	MET	-	EXPRESSION TAG	UNP P00491
E	-19	THR	-	EXPRESSION TAG	UNP P00491
E	-18	GLY	-	EXPRESSION TAG	UNP P00491

Continued on next page...

Continued from previous page...

Chain	Residue	Modelled	Actual	Comment	Reference
E	-17	GLY	-	EXPRESSION TAG	UNP P00491
E	-16	GLN	-	EXPRESSION TAG	UNP P00491
E	-15	GLN	-	EXPRESSION TAG	UNP P00491
E	-14	MET	-	EXPRESSION TAG	UNP P00491
E	-13	GLY	-	EXPRESSION TAG	UNP P00491
E	-12	ARG	-	EXPRESSION TAG	UNP P00491
E	-11	ASP	-	EXPRESSION TAG	UNP P00491
E	-10	LEU	-	EXPRESSION TAG	UNP P00491
E	-9	TYR	-	EXPRESSION TAG	UNP P00491
E	-8	ASP	-	EXPRESSION TAG	UNP P00491
E	-7	ASP	-	EXPRESSION TAG	UNP P00491
E	-6	ASP	-	EXPRESSION TAG	UNP P00491
E	-5	ASP	-	EXPRESSION TAG	UNP P00491
E	-4	LYS	-	EXPRESSION TAG	UNP P00491
E	-3	ASP	-	EXPRESSION TAG	UNP P00491
E	-2	PRO	-	EXPRESSION TAG	UNP P00491
E	-1	THR	-	EXPRESSION TAG	UNP P00491
E	0	LEU	-	EXPRESSION TAG	UNP P00491
E	51	SER	GLY	CONFLICT	UNP P00491
Q	-34	MET	-	EXPRESSION TAG	UNP P00491
Q	-33	ARG	-	EXPRESSION TAG	UNP P00491
Q	-32	GLY	-	EXPRESSION TAG	UNP P00491
Q	-31	SER	-	EXPRESSION TAG	UNP P00491
Q	-30	HIS	-	EXPRESSION TAG	UNP P00491
Q	-29	HIS	-	EXPRESSION TAG	UNP P00491
Q	-28	HIS	-	EXPRESSION TAG	UNP P00491
Q	-27	HIS	-	EXPRESSION TAG	UNP P00491
Q	-26	HIS	-	EXPRESSION TAG	UNP P00491
Q	-25	HIS	-	EXPRESSION TAG	UNP P00491
Q	-24	GLY	-	EXPRESSION TAG	UNP P00491
Q	-23	MET	-	EXPRESSION TAG	UNP P00491
Q	-22	ALA	-	EXPRESSION TAG	UNP P00491
Q	-21	SER	-	EXPRESSION TAG	UNP P00491
Q	-20	MET	-	EXPRESSION TAG	UNP P00491
Q	-19	THR	-	EXPRESSION TAG	UNP P00491
Q	-18	GLY	-	EXPRESSION TAG	UNP P00491
Q	-17	GLY	-	EXPRESSION TAG	UNP P00491
Q	-16	GLN	-	EXPRESSION TAG	UNP P00491
Q	-15	GLN	-	EXPRESSION TAG	UNP P00491
Q	-14	MET	-	EXPRESSION TAG	UNP P00491
Q	-13	GLY	-	EXPRESSION TAG	UNP P00491
Q	-12	ARG	-	EXPRESSION TAG	UNP P00491

Continued on next page...

Continued from previous page...

Chain	Residue	Modelled	Actual	Comment	Reference
Q	-11	ASP	-	EXPRESSION TAG	UNP P00491
Q	-10	LEU	-	EXPRESSION TAG	UNP P00491
Q	-9	TYR	-	EXPRESSION TAG	UNP P00491
Q	-8	ASP	-	EXPRESSION TAG	UNP P00491
Q	-7	ASP	-	EXPRESSION TAG	UNP P00491
Q	-6	ASP	-	EXPRESSION TAG	UNP P00491
Q	-5	ASP	-	EXPRESSION TAG	UNP P00491
Q	-4	LYS	-	EXPRESSION TAG	UNP P00491
Q	-3	ASP	-	EXPRESSION TAG	UNP P00491
Q	-2	PRO	-	EXPRESSION TAG	UNP P00491
Q	-1	THR	-	EXPRESSION TAG	UNP P00491
Q	0	LEU	-	EXPRESSION TAG	UNP P00491
Q	51	SER	GLY	CONFLICT	UNP P00491
S	-34	MET	-	EXPRESSION TAG	UNP P00491
S	-33	ARG	-	EXPRESSION TAG	UNP P00491
S	-32	GLY	-	EXPRESSION TAG	UNP P00491
S	-31	SER	-	EXPRESSION TAG	UNP P00491
S	-30	HIS	-	EXPRESSION TAG	UNP P00491
S	-29	HIS	-	EXPRESSION TAG	UNP P00491
S	-28	HIS	-	EXPRESSION TAG	UNP P00491
S	-27	HIS	-	EXPRESSION TAG	UNP P00491
S	-26	HIS	-	EXPRESSION TAG	UNP P00491
S	-25	HIS	-	EXPRESSION TAG	UNP P00491
S	-24	GLY	-	EXPRESSION TAG	UNP P00491
S	-23	MET	-	EXPRESSION TAG	UNP P00491
S	-22	ALA	-	EXPRESSION TAG	UNP P00491
S	-21	SER	-	EXPRESSION TAG	UNP P00491
S	-20	MET	-	EXPRESSION TAG	UNP P00491
S	-19	THR	-	EXPRESSION TAG	UNP P00491
S	-18	GLY	-	EXPRESSION TAG	UNP P00491
S	-17	GLY	-	EXPRESSION TAG	UNP P00491
S	-16	GLN	-	EXPRESSION TAG	UNP P00491
S	-15	GLN	-	EXPRESSION TAG	UNP P00491
S	-14	MET	-	EXPRESSION TAG	UNP P00491
S	-13	GLY	-	EXPRESSION TAG	UNP P00491
S	-12	ARG	-	EXPRESSION TAG	UNP P00491
S	-11	ASP	-	EXPRESSION TAG	UNP P00491
S	-10	LEU	-	EXPRESSION TAG	UNP P00491
S	-9	TYR	-	EXPRESSION TAG	UNP P00491
S	-8	ASP	-	EXPRESSION TAG	UNP P00491
S	-7	ASP	-	EXPRESSION TAG	UNP P00491
S	-6	ASP	-	EXPRESSION TAG	UNP P00491

Continued on next page...

Continued from previous page...

Chain	Residue	Modelled	Actual	Comment	Reference
S	-5	ASP	-	EXPRESSION TAG	UNP P00491
S	-4	LYS	-	EXPRESSION TAG	UNP P00491
S	-3	ASP	-	EXPRESSION TAG	UNP P00491
S	-2	PRO	-	EXPRESSION TAG	UNP P00491
S	-1	THR	-	EXPRESSION TAG	UNP P00491
S	0	LEU	-	EXPRESSION TAG	UNP P00491
S	51	SER	GLY	CONFLICT	UNP P00491
T	-34	MET	-	EXPRESSION TAG	UNP P00491
T	-33	ARG	-	EXPRESSION TAG	UNP P00491
T	-32	GLY	-	EXPRESSION TAG	UNP P00491
T	-31	SER	-	EXPRESSION TAG	UNP P00491
T	-30	HIS	-	EXPRESSION TAG	UNP P00491
T	-29	HIS	-	EXPRESSION TAG	UNP P00491
T	-28	HIS	-	EXPRESSION TAG	UNP P00491
T	-27	HIS	-	EXPRESSION TAG	UNP P00491
T	-26	HIS	-	EXPRESSION TAG	UNP P00491
T	-25	HIS	-	EXPRESSION TAG	UNP P00491
T	-24	GLY	-	EXPRESSION TAG	UNP P00491
T	-23	MET	-	EXPRESSION TAG	UNP P00491
T	-22	ALA	-	EXPRESSION TAG	UNP P00491
T	-21	SER	-	EXPRESSION TAG	UNP P00491
T	-20	MET	-	EXPRESSION TAG	UNP P00491
T	-19	THR	-	EXPRESSION TAG	UNP P00491
T	-18	GLY	-	EXPRESSION TAG	UNP P00491
T	-17	GLY	-	EXPRESSION TAG	UNP P00491
T	-16	GLN	-	EXPRESSION TAG	UNP P00491
T	-15	GLN	-	EXPRESSION TAG	UNP P00491
T	-14	MET	-	EXPRESSION TAG	UNP P00491
T	-13	GLY	-	EXPRESSION TAG	UNP P00491
T	-12	ARG	-	EXPRESSION TAG	UNP P00491
T	-11	ASP	-	EXPRESSION TAG	UNP P00491
T	-10	LEU	-	EXPRESSION TAG	UNP P00491
T	-9	TYR	-	EXPRESSION TAG	UNP P00491
T	-8	ASP	-	EXPRESSION TAG	UNP P00491
T	-7	ASP	-	EXPRESSION TAG	UNP P00491
T	-6	ASP	-	EXPRESSION TAG	UNP P00491
T	-5	ASP	-	EXPRESSION TAG	UNP P00491
T	-4	LYS	-	EXPRESSION TAG	UNP P00491
T	-3	ASP	-	EXPRESSION TAG	UNP P00491
T	-2	PRO	-	EXPRESSION TAG	UNP P00491
T	-1	THR	-	EXPRESSION TAG	UNP P00491
T	0	LEU	-	EXPRESSION TAG	UNP P00491

Continued on next page...

Continued from previous page...

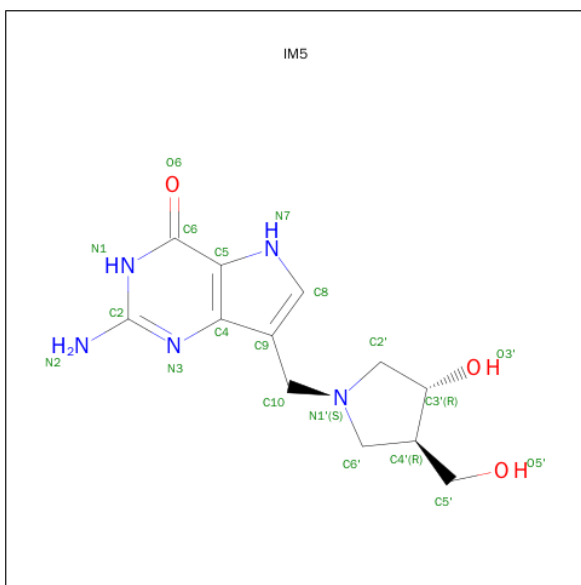
Chain	Residue	Modelled	Actual	Comment	Reference
T	51	SER	GLY	CONFLICT	UNP P00491
U	-34	MET	-	EXPRESSION TAG	UNP P00491
U	-33	ARG	-	EXPRESSION TAG	UNP P00491
U	-32	GLY	-	EXPRESSION TAG	UNP P00491
U	-31	SER	-	EXPRESSION TAG	UNP P00491
U	-30	HIS	-	EXPRESSION TAG	UNP P00491
U	-29	HIS	-	EXPRESSION TAG	UNP P00491
U	-28	HIS	-	EXPRESSION TAG	UNP P00491
U	-27	HIS	-	EXPRESSION TAG	UNP P00491
U	-26	HIS	-	EXPRESSION TAG	UNP P00491
U	-25	HIS	-	EXPRESSION TAG	UNP P00491
U	-24	GLY	-	EXPRESSION TAG	UNP P00491
U	-23	MET	-	EXPRESSION TAG	UNP P00491
U	-22	ALA	-	EXPRESSION TAG	UNP P00491
U	-21	SER	-	EXPRESSION TAG	UNP P00491
U	-20	MET	-	EXPRESSION TAG	UNP P00491
U	-19	THR	-	EXPRESSION TAG	UNP P00491
U	-18	GLY	-	EXPRESSION TAG	UNP P00491
U	-17	GLY	-	EXPRESSION TAG	UNP P00491
U	-16	GLN	-	EXPRESSION TAG	UNP P00491
U	-15	GLN	-	EXPRESSION TAG	UNP P00491
U	-14	MET	-	EXPRESSION TAG	UNP P00491
U	-13	GLY	-	EXPRESSION TAG	UNP P00491
U	-12	ARG	-	EXPRESSION TAG	UNP P00491
U	-11	ASP	-	EXPRESSION TAG	UNP P00491
U	-10	LEU	-	EXPRESSION TAG	UNP P00491
U	-9	TYR	-	EXPRESSION TAG	UNP P00491
U	-8	ASP	-	EXPRESSION TAG	UNP P00491
U	-7	ASP	-	EXPRESSION TAG	UNP P00491
U	-6	ASP	-	EXPRESSION TAG	UNP P00491
U	-5	ASP	-	EXPRESSION TAG	UNP P00491
U	-4	LYS	-	EXPRESSION TAG	UNP P00491
U	-3	ASP	-	EXPRESSION TAG	UNP P00491
U	-2	PRO	-	EXPRESSION TAG	UNP P00491
U	-1	THR	-	EXPRESSION TAG	UNP P00491
U	0	LEU	-	EXPRESSION TAG	UNP P00491
U	51	SER	GLY	CONFLICT	UNP P00491
Y	-34	MET	-	EXPRESSION TAG	UNP P00491
Y	-33	ARG	-	EXPRESSION TAG	UNP P00491
Y	-32	GLY	-	EXPRESSION TAG	UNP P00491
Y	-31	SER	-	EXPRESSION TAG	UNP P00491
Y	-30	HIS	-	EXPRESSION TAG	UNP P00491

Continued on next page...

Continued from previous page...

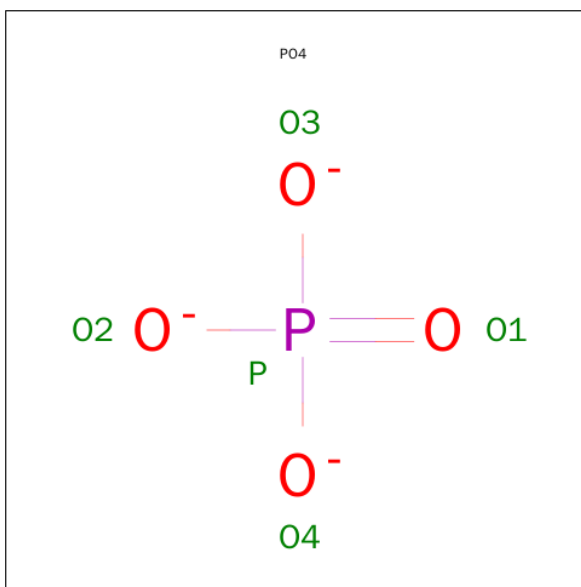
Chain	Residue	Modelled	Actual	Comment	Reference
Y	-29	HIS	-	EXPRESSION TAG	UNP P00491
Y	-28	HIS	-	EXPRESSION TAG	UNP P00491
Y	-27	HIS	-	EXPRESSION TAG	UNP P00491
Y	-26	HIS	-	EXPRESSION TAG	UNP P00491
Y	-25	HIS	-	EXPRESSION TAG	UNP P00491
Y	-24	GLY	-	EXPRESSION TAG	UNP P00491
Y	-23	MET	-	EXPRESSION TAG	UNP P00491
Y	-22	ALA	-	EXPRESSION TAG	UNP P00491
Y	-21	SER	-	EXPRESSION TAG	UNP P00491
Y	-20	MET	-	EXPRESSION TAG	UNP P00491
Y	-19	THR	-	EXPRESSION TAG	UNP P00491
Y	-18	GLY	-	EXPRESSION TAG	UNP P00491
Y	-17	GLY	-	EXPRESSION TAG	UNP P00491
Y	-16	GLN	-	EXPRESSION TAG	UNP P00491
Y	-15	GLN	-	EXPRESSION TAG	UNP P00491
Y	-14	MET	-	EXPRESSION TAG	UNP P00491
Y	-13	GLY	-	EXPRESSION TAG	UNP P00491
Y	-12	ARG	-	EXPRESSION TAG	UNP P00491
Y	-11	ASP	-	EXPRESSION TAG	UNP P00491
Y	-10	LEU	-	EXPRESSION TAG	UNP P00491
Y	-9	TYR	-	EXPRESSION TAG	UNP P00491
Y	-8	ASP	-	EXPRESSION TAG	UNP P00491
Y	-7	ASP	-	EXPRESSION TAG	UNP P00491
Y	-6	ASP	-	EXPRESSION TAG	UNP P00491
Y	-5	ASP	-	EXPRESSION TAG	UNP P00491
Y	-4	LYS	-	EXPRESSION TAG	UNP P00491
Y	-3	ASP	-	EXPRESSION TAG	UNP P00491
Y	-2	PRO	-	EXPRESSION TAG	UNP P00491
Y	-1	THR	-	EXPRESSION TAG	UNP P00491
Y	0	LEU	-	EXPRESSION TAG	UNP P00491
Y	51	SER	GLY	CONFLICT	UNP P00491

- Molecule 2 is 2-AMINO-7-[[[(3R,4R)-3-HYDROXY-4-(HYDROXYMETHYL)PYRROLIDINE-1-YL]METHYL]-3,5-DIHYDRO-4H-PYRROLO[3,2-D]PYRIMIDIN-4-ONE (three-letter code: IM5) (formula: C₁₂H₁₇N₅O₃).



Mol	Chain	Residues	Atoms				ZeroOcc	AltConf
2	E	1	Total	C	N	O	0	0
			20	12	5	3		
2	Q	1	Total	C	N	O	0	0
			20	12	5	3		
2	S	1	Total	C	N	O	0	0
			20	12	5	3		
2	T	1	Total	C	N	O	0	0
			20	12	5	3		
2	U	1	Total	C	N	O	0	0
			20	12	5	3		
2	Y	1	Total	C	N	O	0	0
			20	12	5	3		

- Molecule 3 is PHOSPHATE ION (three-letter code: PO4) (formula: O₄P).



Mol	Chain	Residues	Atoms			ZeroOcc	AltConf
3	E	1	Total	O	P	0	0
			5	4	1		
3	E	1	Total	O	P	0	0
			5	4	1		
3	Q	1	Total	O	P	0	0
			5	4	1		
3	Q	1	Total	O	P	0	0
			5	4	1		
3	S	1	Total	O	P	0	0
			5	4	1		
3	S	1	Total	O	P	0	0
			5	4	1		
3	T	1	Total	O	P	0	0
			5	4	1		
3	T	1	Total	O	P	0	0
			5	4	1		
3	U	1	Total	O	P	0	0
			5	4	1		
3	Y	1	Total	O	P	0	0
			5	4	1		
3	Y	1	Total	O	P	0	0
			5	4	1		
3	Y	1	Total	O	P	0	0
			5	4	1		

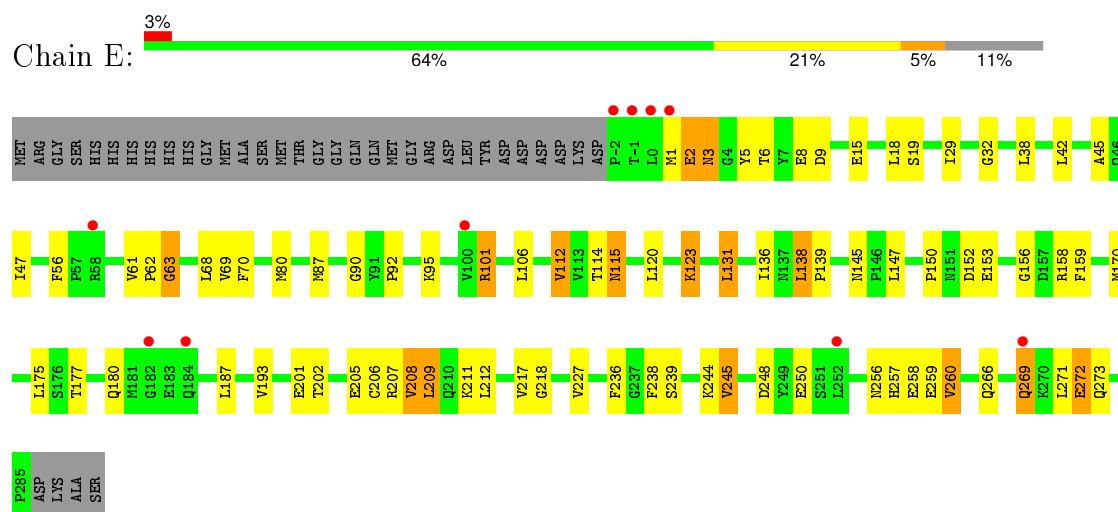
- Molecule 4 is water.

Mol	Chain	Residues	Atoms		ZeroOcc	AltConf
4	E	16	Total 16	O 16	0	0
4	Q	18	Total 18	O 18	0	0
4	S	15	Total 15	O 15	0	0
4	T	10	Total 10	O 10	0	0
4	U	13	Total 13	O 13	0	0
4	Y	18	Total 18	O 18	0	0

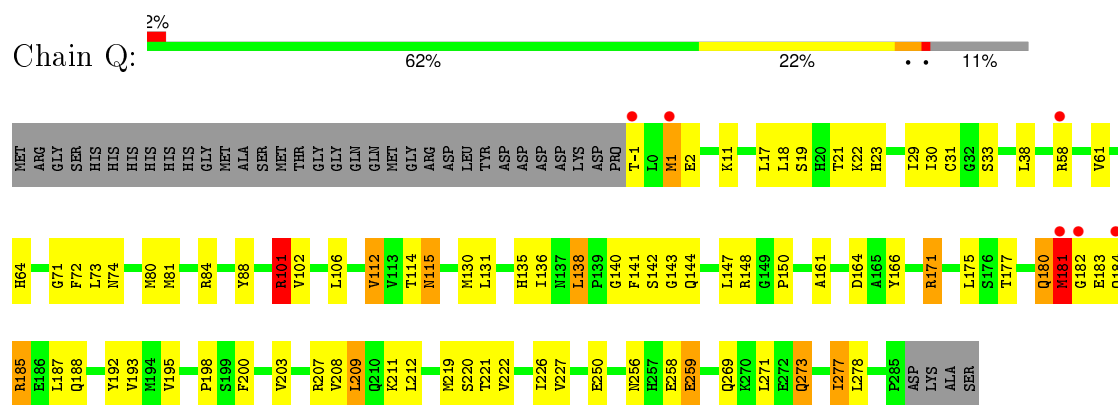
3 Residue-property plots

These plots are drawn for all protein, RNA and DNA chains in the entry. The first graphic for a chain summarises the proportions of errors displayed in the second graphic. The second graphic shows the sequence view annotated by issues in geometry and electron density. Residues are color-coded according to the number of geometric quality criteria for which they contain at least one outlier: green = 0, yellow = 1, orange = 2 and red = 3 or more. A red dot above a residue indicates a poor fit to the electron density ($\text{RSRZ} > 2$). Stretches of 2 or more consecutive residues without any outlier are shown as a green connector. Residues present in the sample, but not in the model, are shown in grey.

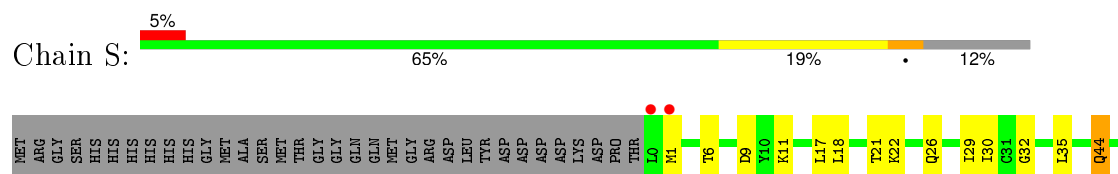
- Molecule 1: Purine nucleoside phosphorylase

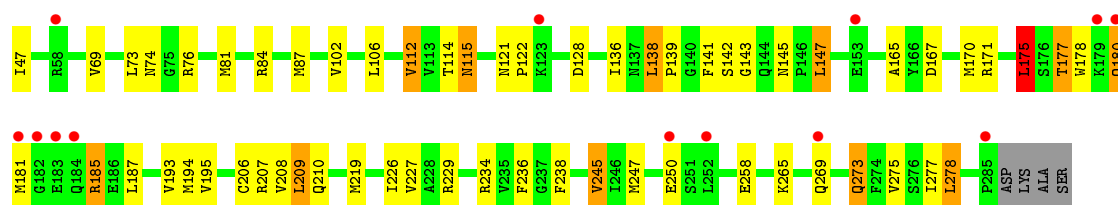


- Molecule 1: Purine nucleoside phosphorylase

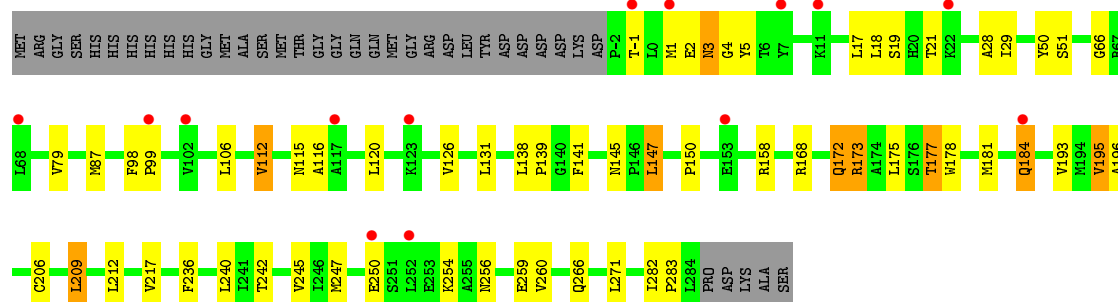


- Molecule 1: Purine nucleoside phosphorylase

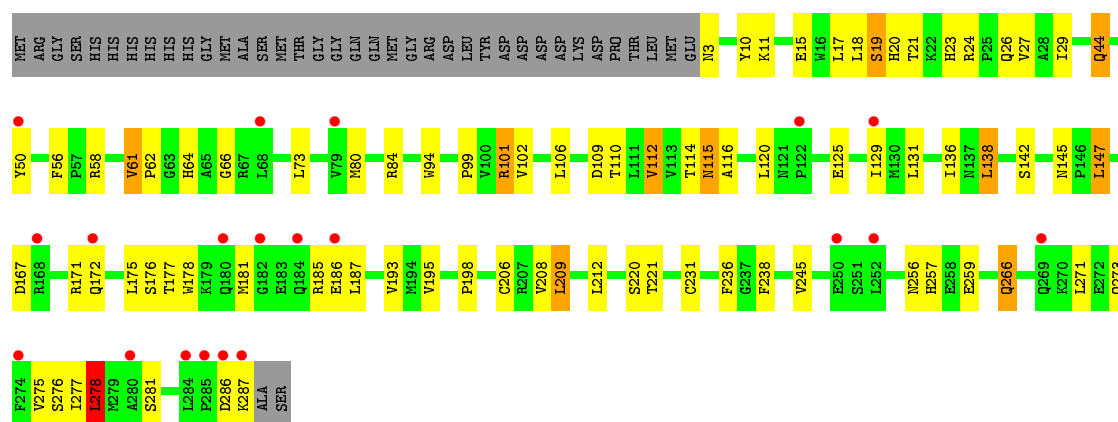




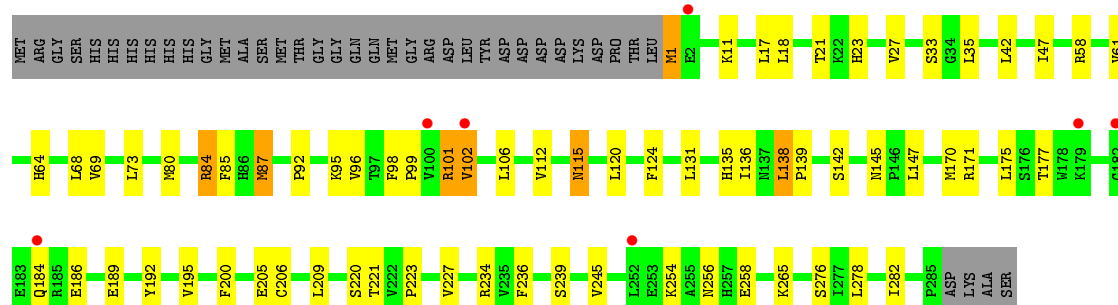
• Molecule 1: Purine nucleoside phosphorylase



• Molecule 1: Purine nucleoside phosphorylase



• Molecule 1: Purine nucleoside phosphorylase



4 Data and refinement statistics

Property	Value	Source
Space group	C 1 2 1	Depositor
Cell constants a, b, c, α , β , γ	269.27Å 52.63Å 128.12Å 90.00° 90.33° 90.00°	Depositor
Resolution (Å)	19.91 – 2.30 19.91 – 2.30	Depositor EDS
% Data completeness (in resolution range)	98.9 (19.91-2.30) 98.9 (19.91-2.30)	Depositor EDS
R_{merge}	0.09	Depositor
R_{sym}	(Not available)	Depositor
$\langle I/\sigma(I) \rangle$ ¹	1.51 (at 2.30Å)	Xtriage
Refinement program	REFMAC 5.5.0109	Depositor
R, R_{free}	0.230 , 0.295 0.230 , 0.295	Depositor DCC
R_{free} test set	3982 reflections (5.26%)	DCC
Wilson B-factor (Å ²)	42.0	Xtriage
Anisotropy	0.235	Xtriage
Bulk solvent k_{sol} (e/Å ³), B_{sol} (Å ²)	0.34 , 35.6	EDS
Estimated twinning fraction	0.004 for -h,-k,l	Xtriage
L-test for twinning ²	$\langle L \rangle = 0.51$, $\langle L^2 \rangle = 0.35$	Xtriage
Outliers	1 of 79666 reflections (0.001%)	Xtriage
F_o, F_c correlation	0.94	EDS
Total number of atoms	13732	wwPDB-VP
Average B, all atoms (Å ²)	47.0	wwPDB-VP

Xtriage's analysis on translational NCS is as follows: *The largest off-origin peak in the Patterson function is 4.15% of the height of the origin peak. No significant pseudotranslation is detected.*

¹Intensities estimated from amplitudes.

²Theoretical values of $\langle |L| \rangle$, $\langle L^2 \rangle$ for acentric reflections are 0.5, 0.375 respectively for untwinned datasets, and 0.333, 0.2 for perfectly twinned datasets.

5 Model quality

5.1 Standard geometry

Bond lengths and bond angles in the following residue types are not validated in this section: PO4, IM5

The Z score for a bond length (or angle) is the number of standard deviations the observed value is removed from the expected value. A bond length (or angle) with $|Z| > 5$ is considered an outlier worth inspection. RMSZ is the root-mean-square of all Z scores of the bond lengths (or angles).

Mol	Chain	Bond lengths		Bond angles	
		RMSZ	$\# Z > 5$	RMSZ	$\# Z > 5$
1	E	0.70	0/2305	0.77	1/3120 (0.0%)
1	Q	0.68	0/2308	0.77	2/3123 (0.1%)
1	S	0.64	0/2290	0.74	1/3099 (0.0%)
1	T	0.62	0/2297	0.72	0/3108
1	U	0.67	1/2293 (0.0%)	0.71	1/3102 (0.0%)
1	Y	0.65	0/2282	0.75	2/3088 (0.1%)
All	All	0.66	1/13775 (0.0%)	0.74	7/18640 (0.0%)

All (1) bond length outliers are listed below:

Mol	Chain	Res	Type	Atoms	Z	Observed(Å)	Ideal(Å)
1	U	231	CYS	CB-SG	-5.65	1.72	1.81

All (7) bond angle outliers are listed below:

Mol	Chain	Res	Type	Atoms	Z	Observed(°)	Ideal(°)
1	Y	101	ARG	NE-CZ-NH1	5.92	123.26	120.30
1	Q	101	ARG	NE-CZ-NH1	-5.62	117.49	120.30
1	Y	101	ARG	NE-CZ-NH2	-5.55	117.53	120.30
1	U	278	LEU	CA-CB-CG	5.45	127.84	115.30
1	Q	101	ARG	NE-CZ-NH2	5.41	123.01	120.30
1	S	175	LEU	CA-CB-CG	5.37	127.66	115.30
1	E	63	GLY	N-CA-C	-5.04	100.51	113.10

There are no chirality outliers.

There are no planarity outliers.

5.2 Too-close contacts ⓘ

In the following table, the Non-H and H(model) columns list the number of non-hydrogen atoms and hydrogen atoms in the chain respectively. The H(added) column lists the number of hydrogen atoms added and optimized by MolProbity. The Clashes column lists the number of clashes within the asymmetric unit, whereas Symm-Clashes lists symmetry related clashes.

Mol	Chain	Non-H	H(model)	H(added)	Clashes	Symm-Clashes
1	E	2252	0	2233	62	0
1	Q	2256	0	2238	81	0
1	S	2238	0	2219	48	0
1	T	2245	0	2226	37	0
1	U	2241	0	2219	53	0
1	Y	2230	0	2208	45	0
2	E	20	0	17	1	0
2	Q	20	0	17	0	0
2	S	20	0	17	0	0
2	T	20	0	17	0	0
2	U	20	0	17	1	0
2	Y	20	0	17	0	0
3	E	10	0	0	0	0
3	Q	10	0	0	0	0
3	S	10	0	0	0	0
3	T	10	0	0	1	0
3	U	5	0	0	0	0
3	Y	15	0	0	0	0
4	E	16	0	0	1	0
4	Q	18	0	0	6	0
4	S	15	0	0	0	0
4	T	10	0	0	0	0
4	U	13	0	0	1	0
4	Y	18	0	0	1	0
All	All	13732	0	13445	298	0

The all-atom clashscore is defined as the number of clashes found per 1000 atoms (including hydrogen atoms). The all-atom clashscore for this structure is 11.

All (298) close contacts within the same asymmetric unit are listed below, sorted by their clash magnitude.

Atom-1	Atom-2	Interatomic distance (Å)	Clash overlap (Å)
1:U:177:THR:HG21	1:U:277:ILE:CG2	1.80	1.10
1:Q:171[A]:ARG:HG3	1:Q:171[A]:ARG:HH21	1.13	1.07
1:T:184:GLN:HE21	1:T:184:GLN:H	1.02	0.97

Continued on next page...

Continued from previous page...

Atom-1	Atom-2	Interatomic distance (Å)	Clash overlap (Å)
1:U:177:THR:CG2	1:U:277:ILE:HG21	1.98	0.93
1:U:177:THR:HG21	1:U:277:ILE:HG23	1.52	0.92
1:U:177:THR:CG2	1:U:277:ILE:CG2	2.50	0.90
1:U:29:ILE:HG23	1:U:112:VAL:HG22	1.52	0.90
1:Q:64:HIS:HD2	1:Q:84:ARG:H	1.15	0.89
1:E:159:PHE:HB3	1:Q:200:PHE:CE2	2.09	0.88
1:Q:171[A]:ARG:HG3	1:Q:171[A]:ARG:NH2	1.89	0.84
1:S:207:ARG:HA	1:S:210:GLN:HE21	1.43	0.83
1:Q:171[B]:ARG:HH11	1:Q:171[B]:ARG:HG3	1.44	0.82
1:Q:33:SER:OG	1:Q:64:HIS:HE1	1.65	0.80
1:Q:1:MET:HG2	1:Q:148:ARG:HD3	1.62	0.79
1:Y:120:LEU:HD23	1:Y:245:VAL:HG21	1.63	0.79
1:E:101:ARG:HD3	4:E:307:HOH:O	1.83	0.77
1:Y:33:SER:OG	1:Y:64:HIS:HE1	1.68	0.76
1:Q:171[B]:ARG:HH11	1:Q:171[B]:ARG:CG	1.97	0.76
1:U:177:THR:HG22	1:U:177:THR:O	1.86	0.76
1:T:131:LEU:HD21	1:T:236:PHE:CZ	2.20	0.75
1:T:184:GLN:NE2	1:T:184:GLN:H	1.81	0.75
1:Y:73:LEU:HD22	1:Y:80:MET:HE1	1.70	0.74
1:E:269:GLN:HA	1:E:269:GLN:HE21	1.52	0.73
1:E:2:GLU:HB3	1:E:150:PRO:HD2	1.71	0.72
1:Q:171[B]:ARG:NH1	1:Q:171[B]:ARG:HB2	2.04	0.72
1:T:184:GLN:N	1:T:184:GLN:HE21	1.85	0.72
1:Q:195:VAL:CG1	4:Q:293:HOH:O	2.39	0.70
1:E:153:GLU:HA	1:E:156:GLY:O	1.91	0.69
1:U:177:THR:O	1:U:177:THR:CG2	2.40	0.69
1:E:158:ARG:HH21	1:Q:198:PRO:HG3	1.57	0.69
1:Y:206:CYS:SG	1:Y:245:VAL:HG23	2.34	0.68
1:E:2:GLU:CB	1:E:150:PRO:HD2	2.23	0.68
1:E:3:ASN:HD22	1:E:5:TYR:H	1.43	0.67
1:U:256:ASN:ND2	1:U:259:GLU:H	1.93	0.67
1:E:145:ASN:OD1	1:E:147:LEU:HB2	1.95	0.66
1:E:159:PHE:HB3	1:Q:200:PHE:HE2	1.57	0.66
1:U:177:THR:HG22	1:U:277:ILE:HG21	1.75	0.65
1:Q:64:HIS:CD2	1:Q:84:ARG:H	2.06	0.65
1:E:115:ASN:HD22	1:E:115:ASN:C	2.00	0.65
1:Q:142:SER:CB	1:Y:139:PRO:HA	2.26	0.65
1:T:120:LEU:HD23	1:T:245:VAL:HG21	1.79	0.65
1:Q:2:GLU:HG3	1:Q:150:PRO:HD2	1.80	0.64
1:S:87:MET:HE2	1:S:194:MET:HE1	1.78	0.64
1:Q:181:MET:HG2	1:Q:273:GLN:HG3	1.79	0.64

Continued on next page...

Continued from previous page...

Atom-1	Atom-2	Interatomic distance (Å)	Clash overlap (Å)
1:U:125:GLU:HB2	1:U:185:ARG:HH12	1.62	0.64
1:Q:143:GLY:HA2	1:Y:87:MET:HE2	1.79	0.63
1:Q:203:VAL:O	1:Q:207:ARG:HG2	1.99	0.63
1:U:61:VAL:HG22	1:U:64:HIS:CD2	2.34	0.63
1:E:139:PRO:HA	1:Y:142:SER:HB3	1.81	0.63
1:T:3:ASN:ND2	1:T:5:TYR:H	1.96	0.63
1:Q:72:PHE:CZ	1:S:180:GLN:HG3	2.34	0.63
1:T:29:ILE:HG23	1:T:112:VAL:HG22	1.81	0.62
1:E:206:CYS:SG	1:E:245:VAL:HG22	2.40	0.62
1:U:145:ASN:OD1	1:U:147:LEU:HB2	2.00	0.62
1:U:19:SER:HB3	1:U:20:HIS:ND1	2.16	0.61
1:Q:220:SER:HB2	4:Q:303:HOH:O	1.99	0.61
1:Q:72:PHE:HZ	1:S:180:GLN:HG3	1.64	0.61
1:E:139:PRO:HA	1:Y:142:SER:CB	2.30	0.61
1:E:115:ASN:ND2	1:E:239:SER:OG	2.31	0.61
1:Q:182:GLY:C	1:Q:183:GLU:HG2	2.20	0.61
1:S:136:ILE:HB	1:S:193:VAL:HG23	1.83	0.61
1:Y:115:ASN:ND2	1:Y:239:SER:OG	2.27	0.60
1:S:177:THR:O	1:S:181:MET:HG2	2.02	0.60
1:Y:33:SER:OG	1:Y:64:HIS:CE1	2.53	0.60
1:E:177:THR:O	1:E:180:GLN:HB2	2.02	0.60
1:E:136:ILE:HG22	1:E:138:LEU:HD13	1.84	0.59
1:T:131:LEU:HD21	1:T:236:PHE:HZ	1.68	0.59
1:S:6:THR:O	1:S:9:ASP:HB2	2.02	0.59
1:Q:142:SER:HB2	1:Y:139:PRO:HA	1.84	0.58
1:Q:73:LEU:HD22	1:Q:80:MET:HE1	1.85	0.58
1:E:131:LEU:HD11	1:E:236:PHE:CE1	2.37	0.58
1:Y:64:HIS:HD2	1:Y:84:ARG:H	1.50	0.58
1:Q:1:MET:CG	1:Q:148:ARG:HD3	2.34	0.58
1:Y:145:ASN:OD1	1:Y:147:LEU:HB2	2.03	0.58
1:U:116:ALA:O	2:U:290:IM5:H10A	2.04	0.58
1:E:131:LEU:HD21	1:E:236:PHE:HZ	1.69	0.57
1:U:181:MET:HA	1:U:273:GLN:HE21	1.68	0.57
1:Q:166:TYR:HB3	1:Q:171[B]:ARG:HH22	1.69	0.57
1:E:170:MET:HE3	1:E:236:PHE:HB2	1.85	0.57
1:Y:73:LEU:HD22	1:Y:80:MET:CE	2.34	0.57
1:E:131:LEU:HD11	1:E:236:PHE:HE1	1.68	0.57
1:E:32:GLY:HA3	1:E:115:ASN:HA	1.85	0.57
1:Y:99:PRO:HA	1:Y:102:VAL:HG13	1.86	0.57
1:E:257:HIS:HA	1:E:260:VAL:HG13	1.87	0.57
1:E:272:GLU:HG2	1:E:273:GLN:N	2.20	0.56

Continued on next page...

Continued from previous page...

Atom-1	Atom-2	Interatomic distance (Å)	Clash overlap (Å)
1:E:207:ARG:O	1:E:211:LYS:HG3	2.05	0.56
1:Q:166:TYR:CB	1:Q:171[B]:ARG:HH22	2.19	0.56
1:T:256:ASN:ND2	1:T:259:GLU:H	2.02	0.56
1:S:170:MET:CE	1:S:234:ARG:HG2	2.35	0.56
1:Q:182:GLY:O	1:Q:183:GLU:HG2	2.05	0.56
1:U:206:CYS:SG	1:U:245:VAL:HG23	2.45	0.56
1:Q:220:SER:O	1:Q:221:THR:HB	2.06	0.56
1:Q:171[B]:ARG:HH11	1:Q:171[B]:ARG:CB	2.20	0.55
1:Q:171[B]:ARG:CB	1:Q:171[B]:ARG:NH1	2.69	0.55
1:Y:47:ILE:HG12	1:Y:69:VAL:HG13	1.87	0.55
1:Q:73:LEU:HD22	1:Q:80:MET:CE	2.36	0.55
1:Q:166:TYR:CB	1:Q:171[B]:ARG:NH2	2.70	0.54
1:U:266:GLN:HA	1:U:266:GLN:HE21	1.71	0.54
1:Y:135:HIS:HA	1:Y:192:TYR:O	2.07	0.54
1:U:73:LEU:HD22	1:U:80:MET:HE1	1.89	0.54
1:S:236:PHE:CD2	1:S:278:LEU:HD21	2.43	0.54
1:Q:17:LEU:O	1:Q:21:THR:HG22	2.09	0.53
1:Y:220:SER:O	1:Y:221:THR:HB	2.07	0.53
1:Q:180:GLN:HB3	1:S:44:GLN:OE1	2.08	0.53
1:E:62:PRO:O	1:E:257:HIS:NE2	2.34	0.53
1:T:173:ARG:O	1:T:177:THR:OG1	2.25	0.53
1:S:26:GLN:OE1	1:S:76:ARG:HD2	2.09	0.53
1:Q:166:TYR:HB3	1:Q:171[B]:ARG:NH2	2.24	0.53
1:Y:61:VAL:HG22	1:Y:64:HIS:ND1	2.23	0.53
1:Y:42:LEU:HD11	1:Y:80:MET:HG3	1.90	0.53
1:Y:101:ARG:HH11	1:Y:101:ARG:HG2	1.73	0.53
1:S:47:ILE:HG23	1:S:69:VAL:HG22	1.90	0.53
1:U:136:ILE:HG22	1:U:138:LEU:HD13	1.91	0.53
1:Q:143:GLY:HA2	1:Y:87:MET:CE	2.39	0.52
1:S:11:LYS:HB3	1:S:11:LYS:NZ	2.24	0.52
1:E:208:VAL:HA	1:E:211:LYS:HD2	1.90	0.52
1:Y:27:VAL:HG21	1:Y:282:ILE:HD13	1.90	0.52
1:E:256:ASN:O	1:E:260:VAL:HG12	2.09	0.52
1:E:123:LYS:HE2	1:E:123:LYS:HA	1.90	0.51
1:S:114:THR:HG22	1:S:238:PHE:CE1	2.44	0.51
1:Q:256:ASN:HD22	1:Q:258:GLU:HB3	1.75	0.51
1:S:207:ARG:HA	1:S:210:GLN:NE2	2.20	0.51
1:Q:171[A]:ARG:CG	1:Q:171[A]:ARG:HH21	1.99	0.51
1:Q:61:VAL:HG13	4:Q:296:HOH:O	2.10	0.51
1:U:26:GLN:HG2	1:U:109:ASP:OD1	2.11	0.51
1:U:50:TYR:CE2	1:U:66:GLY:HA2	2.46	0.51

Continued on next page...

Continued from previous page...

Atom-1	Atom-2	Interatomic distance (Å)	Clash overlap (Å)
1:T:158:ARG:HH21	1:U:198:PRO:HG3	1.75	0.51
1:Y:171:ARG:NH1	1:Y:189:GLU:OE1	2.43	0.51
1:T:2:GLU:HB2	1:T:150:PRO:HD2	1.93	0.51
1:U:61:VAL:HG22	1:U:64:HIS:HD2	1.75	0.51
1:U:112:VAL:HA	1:U:236:PHE:O	2.10	0.51
1:Q:171[B]:ARG:CZ	1:Q:171[B]:ARG:HB2	2.41	0.51
1:E:201:GLU:H	1:E:201:GLU:CD	2.14	0.51
1:U:177:THR:CG2	1:U:277:ILE:HG23	2.29	0.51
1:Y:170:MET:CE	1:Y:234:ARG:HG2	2.41	0.50
1:E:131:LEU:HD21	1:E:236:PHE:CZ	2.46	0.50
1:S:273:GLN:O	1:S:277:ILE:HD13	2.11	0.50
1:E:269:GLN:HA	1:E:269:GLN:NE2	2.23	0.50
1:U:3:ASN:ND2	1:U:94:TRP:HB2	2.26	0.50
1:E:131:LEU:HD23	1:E:187:LEU:HD21	1.94	0.50
1:U:120:LEU:HD23	1:U:245:VAL:HG21	1.93	0.50
1:S:258:GLU:CD	1:S:258:GLU:H	2.15	0.50
1:E:6:THR:O	1:E:9:ASP:HB2	2.11	0.50
1:T:193:VAL:HG13	1:T:217:VAL:HG23	1.93	0.50
1:Q:256:ASN:ND2	1:Q:259:GLU:H	2.10	0.50
1:E:114:THR:HG22	1:E:238:PHE:CE2	2.47	0.49
1:T:50:TYR:CE2	1:T:66:GLY:HA2	2.47	0.49
1:Y:23:HIS:HB3	4:Y:300:HOH:O	2.12	0.49
1:T:193:VAL:HG11	1:T:209:LEU:HG	1.94	0.49
1:T:141:PHE:HA	1:U:195:VAL:HG13	1.94	0.49
1:Q:195:VAL:HG12	4:Q:293:HOH:O	2.10	0.49
1:E:115:ASN:ND2	1:E:115:ASN:C	2.65	0.49
1:E:90:GLY:O	1:Y:1:MET:HA	2.13	0.49
1:U:23:HIS:O	1:U:24:ARG:HD3	2.12	0.49
1:Y:206:CYS:SG	1:Y:245:VAL:CG2	3.01	0.48
1:U:27:VAL:HG22	1:U:110:THR:HB	1.95	0.48
1:Q:222:VAL:O	1:Q:226:ILE:HG13	2.14	0.48
1:E:258:GLU:H	1:E:258:GLU:CD	2.17	0.48
1:E:193:VAL:HG11	1:E:209:LEU:HG	1.94	0.48
1:U:61:VAL:HG13	4:U:294:HOH:O	2.14	0.48
1:S:171:ARG:HG2	1:S:236:PHE:HE1	1.78	0.48
1:T:116:ALA:HB1	1:T:242:THR:HG21	1.96	0.48
1:Q:142:SER:HB3	1:Y:139:PRO:HA	1.96	0.48
1:S:195:VAL:O	1:S:219:MET:HA	2.14	0.48
1:U:17:LEU:O	1:U:21:THR:HG22	2.14	0.48
1:Q:141:PHE:CZ	1:Y:205:GLU:HG2	2.48	0.48
1:T:1:MET:CG	3:T:290:PO4:O4	2.62	0.48

Continued on next page...

Continued from previous page...

Atom-1	Atom-2	Interatomic distance (Å)	Clash overlap (Å)
1:Q:177:THR:HG21	1:Q:277:ILE:HG23	1.95	0.47
1:T:145:ASN:OD1	1:T:147:LEU:HB2	2.14	0.47
1:S:165:ALA:O	1:S:229:ARG:HD3	2.14	0.47
1:U:181:MET:HA	1:U:273:GLN:NE2	2.28	0.47
1:U:167:ASP:O	1:U:171:ARG:HG3	2.13	0.47
1:S:206:CYS:SG	1:S:245:VAL:HG22	2.53	0.47
1:S:30:ILE:HG12	1:S:81:MET:SD	2.54	0.47
1:E:29:ILE:HG23	1:E:112:VAL:HG22	1.96	0.47
1:U:62:PRO:O	1:U:257:HIS:NE2	2.34	0.47
1:Q:-1:THR:HG21	1:Y:95:LYS:NZ	2.29	0.47
1:Y:131:LEU:HD22	1:Y:236:PHE:CZ	2.49	0.47
1:E:38:LEU:HD21	1:E:271:LEU:HB3	1.96	0.47
1:E:3:ASN:ND2	1:E:5:TYR:HB2	2.30	0.47
1:U:178:TRP:CE3	1:U:181:MET:HG3	2.50	0.47
1:Q:30:ILE:HG12	1:Q:81:MET:SD	2.54	0.47
1:Q:38:LEU:HD21	1:Q:271:LEU:HB3	1.97	0.47
1:U:193:VAL:HG11	1:U:209:LEU:HG	1.97	0.47
1:Y:120:LEU:HD23	1:Y:245:VAL:CG2	2.40	0.47
1:Q:182:GLY:C	1:Q:183:GLU:CG	2.84	0.47
1:S:115:ASN:HD22	1:S:115:ASN:C	2.18	0.47
1:S:143:GLY:HA2	1:T:196:ALA:CB	2.44	0.47
1:T:98:PHE:HB3	1:T:99:PRO:HD3	1.97	0.47
1:S:175:LEU:HD13	1:S:187:LEU:HD23	1.96	0.46
1:S:136:ILE:HG22	1:S:138:LEU:HD13	1.98	0.46
1:Q:33:SER:OG	1:Q:64:HIS:CE1	2.57	0.46
1:T:131:LEU:HD23	1:T:131:LEU:HA	1.70	0.46
1:E:120:LEU:HD11	1:E:217:VAL:HB	1.97	0.46
1:U:185:ARG:HH11	1:U:185:ARG:HG3	1.81	0.46
1:S:139:PRO:HA	1:U:142:SER:HB2	1.98	0.46
1:Q:177:THR:CG2	1:Q:277:ILE:HG23	2.46	0.46
1:T:240:LEU:HD22	1:T:271:LEU:HD11	1.98	0.46
1:Y:136:ILE:HG22	1:Y:138:LEU:HD13	1.98	0.46
1:Q:164:ASP:OD1	1:Y:254:LYS:NZ	2.39	0.46
1:E:47:ILE:HG12	1:E:69:VAL:HG22	1.97	0.46
1:U:275:VAL:O	1:U:278:LEU:HB3	2.16	0.45
1:T:28:ALA:HA	1:T:79:VAL:O	2.15	0.45
1:S:17:LEU:O	1:S:21:THR:HG22	2.16	0.45
1:Y:64:HIS:CD2	1:Y:84:ARG:H	2.32	0.45
1:S:87:MET:HE2	1:S:194:MET:CE	2.45	0.45
1:E:42:LEU:HD11	1:E:80:MET:HG3	1.97	0.45
1:E:2:GLU:HB2	1:E:150:PRO:HD2	1.95	0.45

Continued on next page...

Continued from previous page...

Atom-1	Atom-2	Interatomic distance (Å)	Clash overlap (Å)
1:T:5:TYR:CE2	1:T:98:PHE:HB2	2.52	0.45
1:E:45:ALA:HA	1:E:70:PHE:O	2.16	0.45
1:Q:23:HIS:CE1	1:Q:71:GLY:HA2	2.51	0.45
1:Q:29:ILE:HG12	1:Q:112:VAL:HG13	1.98	0.45
1:S:167:ASP:O	1:S:171:ARG:HG3	2.17	0.45
1:Q:130:MET:HA	1:Q:188:GLN:HB2	1.99	0.45
1:S:142:SER:HB2	1:T:139:PRO:HA	1.99	0.45
1:Q:195:VAL:O	1:Q:219:MET:HA	2.17	0.44
1:E:92:PRO:HD2	1:E:95:LYS:HG3	1.99	0.44
1:E:68:LEU:HD12	1:E:80:MET:O	2.17	0.44
1:E:8:GLU:CD	1:E:8:GLU:H	2.21	0.44
1:U:29:ILE:HG12	1:U:112:VAL:HG13	1.98	0.44
1:E:202:THR:OG1	1:E:205:GLU:HG3	2.16	0.44
1:S:193:VAL:HG11	1:S:209:LEU:HG	1.98	0.44
1:Q:101:ARG:HD3	4:Q:297:HOH:O	2.18	0.44
1:T:206:CYS:SG	1:T:245:VAL:HG23	2.57	0.44
1:S:139:PRO:HA	1:U:142:SER:CB	2.47	0.44
1:T:242:THR:HG21	1:T:260:VAL:HG13	1.99	0.43
1:Y:17:LEU:O	1:Y:21:THR:HG22	2.18	0.43
1:Q:31:CYS:HA	1:Q:114:THR:OG1	2.19	0.43
1:Y:256:ASN:HD22	1:Y:258:GLU:HB2	1.83	0.43
1:Q:64:HIS:HD2	1:Q:84:ARG:N	1.97	0.43
1:Q:136:ILE:HG22	1:Q:138:LEU:HD13	2.01	0.43
1:Q:177:THR:O	1:Q:180:GLN:HG3	2.18	0.43
1:S:145:ASN:OD1	1:S:147:LEU:HB2	2.19	0.43
1:Y:85:PHE:O	1:Y:96:VAL:HG13	2.18	0.43
1:Q:171[B]:ARG:NH1	1:Q:171[B]:ARG:CG	2.64	0.43
1:U:15:GLU:O	1:U:19:SER:HB2	2.19	0.43
1:Q:180:GLN:CB	1:S:44:GLN:OE1	2.67	0.43
1:Q:195:VAL:HG13	4:Q:293:HOH:O	2.15	0.43
1:E:158:ARG:NH2	1:Q:198:PRO:HG3	2.28	0.43
1:U:206:CYS:SG	1:U:245:VAL:CG2	3.06	0.43
1:S:206:CYS:HB2	1:S:245:VAL:CG2	2.49	0.43
1:E:248:ASP:OD1	1:E:250:GLU:HB2	2.19	0.43
1:S:171:ARG:HG2	1:S:236:PHE:CE1	2.53	0.42
1:T:168:ARG:O	1:T:172:GLN:HG3	2.19	0.42
1:S:32:GLY:H	1:S:35:LEU:HD12	1.84	0.42
1:S:29:ILE:HG23	1:S:112:VAL:HG22	2.01	0.42
1:S:128:ASP:OD1	1:S:185:ARG:HD3	2.18	0.42
1:Q:61:VAL:HG22	1:Q:64:HIS:ND1	2.34	0.42
1:S:114:THR:HG22	1:S:238:PHE:CZ	2.54	0.42

Continued on next page...

Continued from previous page...

Atom-1	Atom-2	Interatomic distance (Å)	Clash overlap (Å)
1:U:175:LEU:HD12	1:U:187:LEU:HD23	2.01	0.42
1:U:115:ASN:HD22	1:U:115:ASN:C	2.23	0.42
1:E:123:LYS:CE	1:E:123:LYS:HA	2.50	0.42
1:Y:98:PHE:HB3	1:Y:99:PRO:HD3	2.01	0.42
1:E:211:LYS:O	1:Q:211:LYS:HE3	2.19	0.42
1:S:141:PHE:HA	1:T:195:VAL:HG22	2.00	0.42
1:Q:140:GLY:HA2	1:Q:144:GLN:O	2.20	0.42
1:Q:161:ALA:HA	1:Y:200:PHE:HB2	2.02	0.42
1:Q:88:TYR:HB2	1:Q:198:PRO:HD3	2.01	0.42
1:Y:68:LEU:HD12	1:Y:80:MET:O	2.18	0.42
1:Y:92:PRO:HD2	1:Y:95:LYS:HG3	2.02	0.42
1:U:129:ILE:HD11	1:U:271:LEU:HD23	2.02	0.42
1:E:218:GLY:HA2	2:E:290:IM5:N3	2.35	0.42
1:T:3:ASN:HD22	1:T:4:GLY:N	2.18	0.41
1:E:269:GLN:HA	1:E:272:GLU:OE2	2.20	0.41
1:Q:181:MET:CG	1:Q:273:GLN:HG3	2.49	0.41
1:S:121:ASN:HA	1:S:122:PRO:HD2	1.84	0.41
1:Q:166:TYR:C	1:Q:171[B]:ARG:HH22	2.24	0.41
1:S:73:LEU:HD21	1:S:275:VAL:HG12	2.03	0.41
1:E:29:ILE:HG12	1:E:112:VAL:HG13	2.02	0.41
1:Q:193:VAL:HG11	1:Q:209:LEU:HG	2.01	0.41
1:T:282:ILE:HG22	1:T:283:PRO:O	2.19	0.41
1:Q:115:ASN:C	1:Q:115:ASN:HD22	2.23	0.41
1:S:177:THR:HG22	1:S:181:MET:CE	2.51	0.41
1:U:10:TYR:CD1	1:U:101:ARG:HB2	2.56	0.41
1:Q:1:MET:HG2	1:Q:148:ARG:CD	2.43	0.41
1:Q:131:LEU:HD11	1:Q:187:LEU:HD23	2.03	0.41
1:U:220:SER:O	1:U:221:THR:HB	2.20	0.41
1:Y:223:PRO:O	1:Y:227:VAL:HG13	2.21	0.41
1:E:269:GLN:HE21	1:E:269:GLN:CA	2.20	0.41
1:S:178:TRP:CD2	1:S:187:LEU:HD13	2.55	0.41
1:Q:11:LYS:HB3	1:Q:11:LYS:HE2	1.86	0.41
1:U:172:GLN:HE21	1:U:172:GLN:HB2	1.77	0.41
1:S:87:MET:CE	1:S:194:MET:CE	2.98	0.41
1:E:170:MET:CE	1:E:236:PHE:HB2	2.50	0.41
1:Y:124:PHE:N	1:Y:124:PHE:CD1	2.89	0.41
1:U:114:THR:HG22	1:U:238:PHE:CZ	2.56	0.41
1:E:62:PRO:HA	1:E:63:GLY:HA2	1.89	0.40
1:T:172:GLN:HE21	1:T:172:GLN:HB2	1.69	0.40
1:U:131:LEU:HG	1:U:187:LEU:HD21	2.04	0.40
1:T:178:TRP:CE3	1:T:181:MET:HG3	2.56	0.40

Continued on next page...

Continued from previous page...

Atom-1	Atom-2	Interatomic distance (Å)	Clash overlap (Å)
1:T:87:MET:HB3	1:T:87:MET:HE2	1.91	0.40
1:S:147:LEU:HD22	1:S:226:ILE:CG2	2.51	0.40
1:Q:135:HIS:HA	1:Q:192:TYR:O	2.21	0.40
1:T:2:GLU:CB	1:T:150:PRO:HD2	2.51	0.40
1:Q:183:GLU:HB2	1:Q:185:ARG:H	1.86	0.40
1:T:17:LEU:O	1:T:21:THR:HG22	2.21	0.40
1:E:152:ASP:C	1:E:152:ASP:OD1	2.59	0.40
1:U:99:PRO:HA	1:U:102:VAL:HG13	2.04	0.40

There are no symmetry-related clashes.

5.3 Torsion angles

5.3.1 Protein backbone

In the following table, the Percentiles column shows the percent Ramachandran outliers of the chain as a percentile score with respect to all X-ray entries followed by that with respect to entries of similar resolution.

The Analysed column shows the number of residues for which the backbone conformation was analysed, and the total number of residues.

Mol	Chain	Analysed	Favoured	Allowed	Outliers	Percentiles	
1	E	286/324 (88%)	274 (96%)	12 (4%)	0	100	100
1	Q	286/324 (88%)	275 (96%)	10 (4%)	1 (0%)	46	57
1	S	284/324 (88%)	274 (96%)	10 (4%)	0	100	100
1	T	285/324 (88%)	274 (96%)	11 (4%)	0	100	100
1	U	284/324 (88%)	273 (96%)	10 (4%)	1 (0%)	39	48
1	Y	283/324 (87%)	276 (98%)	7 (2%)	0	100	100
All	All	1708/1944 (88%)	1646 (96%)	60 (4%)	2 (0%)	56	68

All (2) Ramachandran outliers are listed below:

Mol	Chain	Res	Type
1	Q	181	MET
1	U	44	GLN

5.3.2 Protein sidechains ⓘ

In the following table, the Percentiles column shows the percent sidechain outliers of the chain as a percentile score with respect to all X-ray entries followed by that with respect to entries of similar resolution.

The Analysed column shows the number of residues for which the sidechain conformation was analysed, and the total number of residues.

Mol	Chain	Analysed	Rotameric	Outliers	Percentiles	
1	E	240/269 (89%)	212 (88%)	28 (12%)	7	7
1	Q	240/269 (89%)	210 (88%)	30 (12%)	6	6
1	S	238/269 (88%)	212 (89%)	26 (11%)	8	9
1	T	239/269 (89%)	216 (90%)	23 (10%)	10	12
1	U	238/269 (88%)	213 (90%)	25 (10%)	8	9
1	Y	237/269 (88%)	216 (91%)	21 (9%)	12	14
All	All	1432/1614 (89%)	1279 (89%)	153 (11%)	8	9

All (153) residues with a non-rotameric sidechain are listed below:

Mol	Chain	Res	Type
1	E	1	MET
1	E	2	GLU
1	E	3	ASN
1	E	15	GLU
1	E	18	LEU
1	E	19	SER
1	E	56	PHE
1	E	61	VAL
1	E	87	MET
1	E	101	ARG
1	E	106	LEU
1	E	112	VAL
1	E	115	ASN
1	E	123	LYS
1	E	131	LEU
1	E	138	LEU
1	E	175	LEU
1	E	208	VAL
1	E	209	LEU
1	E	212	LEU
1	E	227	VAL
1	E	244	LYS

Continued on next page...

Continued from previous page...

Mol	Chain	Res	Type
1	E	245	VAL
1	E	259	GLU
1	E	260	VAL
1	E	266	GLN
1	E	269	GLN
1	E	272	GLU
1	Q	1	MET
1	Q	18	LEU
1	Q	19	SER
1	Q	22	LYS
1	Q	58	ARG
1	Q	74	ASN
1	Q	101	ARG
1	Q	102	VAL
1	Q	106	LEU
1	Q	112	VAL
1	Q	115	ASN
1	Q	138	LEU
1	Q	147	LEU
1	Q	171[A]	ARG
1	Q	171[B]	ARG
1	Q	175	LEU
1	Q	180	GLN
1	Q	181	MET
1	Q	184	GLN
1	Q	185	ARG
1	Q	208	VAL
1	Q	209	LEU
1	Q	212	LEU
1	Q	227	VAL
1	Q	250	GLU
1	Q	259	GLU
1	Q	269	GLN
1	Q	273	GLN
1	Q	277	ILE
1	Q	278	LEU
1	S	1	MET
1	S	18	LEU
1	S	22	LYS
1	S	44	GLN
1	S	74	ASN
1	S	84	ARG

Continued on next page...

Continued from previous page...

Mol	Chain	Res	Type
1	S	102	VAL
1	S	106	LEU
1	S	112	VAL
1	S	115	ASN
1	S	138	LEU
1	S	147	LEU
1	S	175	LEU
1	S	177	THR
1	S	180	GLN
1	S	185	ARG
1	S	208	VAL
1	S	209	LEU
1	S	227	VAL
1	S	245	VAL
1	S	247	MET
1	S	250	GLU
1	S	265	LYS
1	S	269	GLN
1	S	273	GLN
1	S	278	LEU
1	T	-1	THR
1	T	3	ASN
1	T	18	LEU
1	T	19	SER
1	T	51	SER
1	T	106	LEU
1	T	112	VAL
1	T	115	ASN
1	T	126	VAL
1	T	138	LEU
1	T	147	LEU
1	T	172	GLN
1	T	173	ARG
1	T	175	LEU
1	T	177	THR
1	T	184	GLN
1	T	195	VAL
1	T	209	LEU
1	T	212	LEU
1	T	247	MET
1	T	250	GLU
1	T	254	LYS

Continued on next page...

Continued from previous page...

Mol	Chain	Res	Type
1	T	266	GLN
1	U	11	LYS
1	U	18	LEU
1	U	19	SER
1	U	44	GLN
1	U	56	PHE
1	U	58	ARG
1	U	61	VAL
1	U	84	ARG
1	U	101	ARG
1	U	106	LEU
1	U	112	VAL
1	U	115	ASN
1	U	138	LEU
1	U	147	LEU
1	U	176	SER
1	U	186	GLU
1	U	208	VAL
1	U	209	LEU
1	U	212	LEU
1	U	266	GLN
1	U	276	SER
1	U	278	LEU
1	U	281	SER
1	U	286	ASP
1	U	287	LYS
1	Y	1	MET
1	Y	11	LYS
1	Y	18	LEU
1	Y	35	LEU
1	Y	58	ARG
1	Y	84	ARG
1	Y	87	MET
1	Y	102	VAL
1	Y	106	LEU
1	Y	112	VAL
1	Y	115	ASN
1	Y	138	LEU
1	Y	175	LEU
1	Y	177	THR
1	Y	184	GLN
1	Y	186	GLU

Continued on next page...

Continued from previous page...

Mol	Chain	Res	Type
1	Y	195	VAL
1	Y	209	LEU
1	Y	265	LYS
1	Y	276	SER
1	Y	278	LEU

Some sidechains can be flipped to improve hydrogen bonding and reduce clashes. All (36) such sidechains are listed below:

Mol	Chain	Res	Type
1	E	3	ASN
1	E	44	GLN
1	E	115	ASN
1	E	151	ASN
1	E	256	ASN
1	E	266	GLN
1	E	269	GLN
1	E	273	GLN
1	Q	64	HIS
1	Q	115	ASN
1	Q	180	GLN
1	Q	184	GLN
1	Q	210	GLN
1	Q	256	ASN
1	S	172	GLN
1	S	180	GLN
1	S	210	GLN
1	S	266	GLN
1	S	273	GLN
1	T	3	ASN
1	T	115	ASN
1	T	172	GLN
1	T	180	GLN
1	T	184	GLN
1	T	256	ASN
1	U	3	ASN
1	U	115	ASN
1	U	172	GLN
1	U	256	ASN
1	U	266	GLN
1	U	273	GLN
1	Y	64	HIS
1	Y	115	ASN

Continued on next page...

Continued from previous page...

Mol	Chain	Res	Type
1	Y	172	GLN
1	Y	210	GLN
1	Y	256	ASN

5.3.3 RNA ⓘ

There are no RNA molecules in this entry.

5.4 Non-standard residues in protein, DNA, RNA chains ⓘ

There are no non-standard protein/DNA/RNA residues in this entry.

5.5 Carbohydrates ⓘ

There are no carbohydrates in this entry.

5.6 Ligand geometry ⓘ

18 ligands are modelled in this entry.

In the following table, the Counts columns list the number of bonds (or angles) for which Mogul statistics could be retrieved, the number of bonds (or angles) that are observed in the model and the number of bonds (or angles) that are defined in the chemical component dictionary. The Link column lists molecule types, if any, to which the group is linked. The Z score for a bond length (or angle) is the number of standard deviations the observed value is removed from the expected value. A bond length (or angle) with $|Z| > 2$ is considered an outlier worth inspection. RMSZ is the root-mean-square of all Z scores of the bond lengths (or angles).

Mol	Type	Chain	Res	Link	Bond lengths			Bond angles		
					Counts	RMSZ	# Z > 2	Counts	RMSZ	# Z > 2
2	IM5	E	290	-	20,22,22	0.92	1 (5%)	17,32,32	2.59	7 (41%)
3	PO4	E	291	-	4,4,4	0.61	0	6,6,6	0.28	0
3	PO4	E	292	-	4,4,4	0.46	0	6,6,6	0.26	0
2	IM5	Q	290	-	20,22,22	1.16	1 (5%)	17,32,32	2.24	4 (23%)
3	PO4	Q	291	-	4,4,4	0.79	0	6,6,6	0.27	0
3	PO4	Q	292	-	4,4,4	0.60	0	6,6,6	0.26	0
3	PO4	S	290	-	4,4,4	0.83	0	6,6,6	0.28	0
2	IM5	S	291	-	20,22,22	0.99	1 (5%)	17,32,32	2.29	4 (23%)
3	PO4	S	292	-	4,4,4	0.42	0	6,6,6	0.31	0
3	PO4	T	290	-	4,4,4	0.49	0	6,6,6	0.29	0

Mol	Type	Chain	Res	Link	Bond lengths			Bond angles		
					Counts	RMSZ	# Z > 2	Counts	RMSZ	# Z > 2
2	IM5	T	291	-	20,22,22	1.05	1 (5%)	17,32,32	2.51	7 (41%)
3	PO4	T	292	-	4,4,4	0.58	0	6,6,6	0.26	0
2	IM5	U	290	-	20,22,22	0.96	1 (5%)	17,32,32	2.49	7 (41%)
3	PO4	U	291	-	4,4,4	0.41	0	6,6,6	0.28	0
3	PO4	Y	290	-	4,4,4	0.48	0	6,6,6	0.30	0
3	PO4	Y	291	-	4,4,4	0.42	0	6,6,6	0.28	0
2	IM5	Y	292	-	20,22,22	1.07	1 (5%)	17,32,32	2.62	6 (35%)
3	PO4	Y	293	-	4,4,4	0.46	0	6,6,6	0.31	0

In the following table, the Chirals column lists the number of chiral outliers, the number of chiral centers analysed, the number of these observed in the model and the number defined in the chemical component dictionary. Similar counts are reported in the Torsion and Rings columns. '-' means no outliers of that kind were identified.

Mol	Type	Chain	Res	Link	Chirals	Torsions	Rings
2	IM5	E	290	-	-	0/5/18/18	0/3/3/3
3	PO4	E	291	-	-	0/0/0/0	0/0/0/0
3	PO4	E	292	-	-	0/0/0/0	0/0/0/0
2	IM5	Q	290	-	-	0/5/18/18	0/3/3/3
3	PO4	Q	291	-	-	0/0/0/0	0/0/0/0
3	PO4	Q	292	-	-	0/0/0/0	0/0/0/0
3	PO4	S	290	-	-	0/0/0/0	0/0/0/0
2	IM5	S	291	-	-	0/5/18/18	0/3/3/3
3	PO4	S	292	-	-	0/0/0/0	0/0/0/0
3	PO4	T	290	-	-	0/0/0/0	0/0/0/0
2	IM5	T	291	-	-	0/5/18/18	0/3/3/3
3	PO4	T	292	-	-	0/0/0/0	0/0/0/0
2	IM5	U	290	-	-	0/5/18/18	0/3/3/3
3	PO4	U	291	-	-	0/0/0/0	0/0/0/0
3	PO4	Y	290	-	-	0/0/0/0	0/0/0/0
3	PO4	Y	291	-	-	0/0/0/0	0/0/0/0
2	IM5	Y	292	-	-	0/5/18/18	0/3/3/3
3	PO4	Y	293	-	-	0/0/0/0	0/0/0/0

All (6) bond length outliers are listed below:

Mol	Chain	Res	Type	Atoms	Z	Observed(Å)	Ideal(Å)
2	E	290	IM5	C6-C5	3.34	1.47	1.41
2	S	291	IM5	C6-C5	3.37	1.48	1.41
2	U	290	IM5	C6-C5	3.51	1.48	1.41
2	Q	290	IM5	C6-C5	3.70	1.48	1.41
2	Y	292	IM5	C6-C5	3.83	1.48	1.41

Continued on next page...

Continued from previous page...

Mol	Chain	Res	Type	Atoms	Z	Observed(Å)	Ideal(Å)
2	T	291	IM5	C6-C5	3.91	1.49	1.41

All (35) bond angle outliers are listed below:

Mol	Chain	Res	Type	Atoms	Z	Observed(°)	Ideal(°)
2	Y	292	IM5	C6-C5-C4	-5.41	114.42	120.90
2	T	291	IM5	C5-C6-N1	-5.41	116.19	123.59
2	E	290	IM5	C6-C5-C4	-5.00	114.92	120.90
2	U	290	IM5	C6-C5-C4	-4.91	115.03	120.90
2	S	291	IM5	C6-C5-C4	-4.86	115.08	120.90
2	Y	292	IM5	C5-C6-N1	-4.69	117.18	123.59
2	E	290	IM5	C5-C6-N1	-4.67	117.20	123.59
2	Q	290	IM5	C6-C5-C4	-4.42	115.61	120.90
2	U	290	IM5	C5-C6-N1	-4.34	117.66	123.59
2	T	291	IM5	C6-C5-C4	-4.18	115.90	120.90
2	S	291	IM5	C5-C6-N1	-3.89	118.27	123.59
2	Q	290	IM5	C5-C6-N1	-3.57	118.70	123.59
2	Q	290	IM5	N3-C2-N1	-3.35	122.35	127.44
2	U	290	IM5	C3'-C2'-N1'	-3.34	98.98	104.65
2	S	291	IM5	N3-C2-N1	-3.23	122.52	127.44
2	E	290	IM5	N3-C2-N1	-2.97	122.92	127.44
2	Y	292	IM5	N3-C2-N1	-2.87	123.07	127.44
2	U	290	IM5	N3-C2-N1	-2.81	123.17	127.44
2	T	291	IM5	N3-C2-N1	-2.50	123.63	127.44
2	U	290	IM5	O3'-C3'-C4'	-2.49	105.15	112.01
2	T	291	IM5	C3'-C2'-N1'	-2.43	100.53	104.65
2	Y	292	IM5	C10-N1'-C2'	-2.39	109.45	113.61
2	T	291	IM5	C10-N1'-C2'	-2.37	109.49	113.61
2	E	290	IM5	C3'-C2'-N1'	-2.29	100.77	104.65
2	E	290	IM5	O5'-C5'-C4'	-2.19	106.63	111.45
2	U	290	IM5	C9-C4-C5	-2.09	105.55	109.95
2	T	291	IM5	O3'-C3'-C4'	-2.04	106.40	112.01
2	E	290	IM5	C6'-N1'-C2'	2.56	107.50	104.19
2	Y	292	IM5	C6'-N1'-C2'	2.63	107.59	104.19
2	Q	290	IM5	C6-N1-C2	4.54	122.23	115.94
2	S	291	IM5	C6-N1-C2	4.98	122.85	115.94
2	Y	292	IM5	C6-N1-C2	5.38	123.40	115.94
2	U	290	IM5	C6-N1-C2	5.39	123.42	115.94
2	T	291	IM5	C6-N1-C2	5.56	123.65	115.94
2	E	290	IM5	C6-N1-C2	5.74	123.91	115.94

There are no chirality outliers.

There are no torsion outliers.

There are no ring outliers.

3 monomers are involved in 3 short contacts:

Mol	Chain	Res	Type	Clashes	Symm-Clashes
2	E	290	IM5	1	0
3	T	290	PO4	1	0
2	U	290	IM5	1	0

5.7 Other polymers [i](#)

There are no such residues in this entry.

5.8 Polymer linkage issues [i](#)

There are no chain breaks in this entry.

6 Fit of model and data ⓘ

6.1 Protein, DNA and RNA chains ⓘ

In the following table, the column labelled ‘#RSRZ > 2’ contains the number (and percentage) of RSRZ outliers, followed by percent RSRZ outliers for the chain as percentile scores relative to all X-ray entries and entries of similar resolution. The OWAB column contains the minimum, median, 95th percentile and maximum values of the occupancy-weighted average B-factor per residue. The column labelled ‘Q < 0.9’ lists the number of (and percentage) of residues with an average occupancy less than 0.9.

Mol	Chain	Analysed	<RSRZ>	#RSRZ>2	OWAB(Å ²)	Q<0.9
1	E	288/324 (88%)	0.18	10 (3%) 48 56	20, 45, 67, 80	0
1	Q	287/324 (88%)	0.05	6 (2%) 67 74	25, 42, 62, 81	0
1	S	286/324 (88%)	0.08	15 (5%) 31 39	27, 44, 65, 86	0
1	T	287/324 (88%)	0.25	14 (4%) 33 42	28, 51, 65, 77	0
1	U	285/324 (87%)	0.28	20 (7%) 19 27	23, 48, 72, 83	0
1	Y	285/324 (87%)	0.08	7 (2%) 61 70	31, 42, 63, 72	0
All	All	1718/1944 (88%)	0.15	72 (4%) 40 49	20, 45, 68, 86	0

All (72) RSRZ outliers are listed below:

Mol	Chain	Res	Type	RSRZ
1	E	182	GLY	7.2
1	Q	181	MET	6.2
1	S	184	GLN	5.8
1	Q	184	GLN	5.7
1	U	182	GLY	4.9
1	S	180	GLN	4.8
1	S	252	LEU	4.4
1	E	-1	THR	4.2
1	Q	182	GLY	4.0
1	T	22	LYS	4.0
1	S	182	GLY	4.0
1	E	-2	PRO	3.8
1	U	287	LYS	3.8
1	E	184	GLN	3.7
1	T	184	GLN	3.5
1	S	269	GLN	3.1
1	T	1	MET	3.1
1	T	102	VAL	3.1
1	E	0	LEU	3.1

Continued on next page...

Continued from previous page...

Mol	Chain	Res	Type	RSRZ
1	S	179	LYS	3.0
1	U	286	ASP	2.9
1	Y	184	GLN	2.9
1	S	183	GLU	2.8
1	Q	58	ARG	2.6
1	T	252	LEU	2.6
1	U	168	ARG	2.6
1	U	284	LEU	2.6
1	U	186	GLU	2.5
1	Q	-1	THR	2.5
1	T	123	LYS	2.5
1	Q	1	MET	2.5
1	S	0	LEU	2.5
1	S	285	PRO	2.4
1	Y	182	GLY	2.4
1	U	184	GLN	2.4
1	S	181	MET	2.3
1	T	153	GLU	2.3
1	U	122	PRO	2.2
1	U	280	ALA	2.2
1	Y	179	LYS	2.2
1	Y	2	GLU	2.2
1	Y	100	VAL	2.2
1	U	129	ILE	2.2
1	T	7	TYR	2.2
1	S	153	GLU	2.2
1	U	250	GLU	2.2
1	U	252	LEU	2.2
1	U	285	PRO	2.2
1	T	68	LEU	2.2
1	S	58	ARG	2.1
1	T	250	GLU	2.1
1	U	50	TYR	2.1
1	T	11	LYS	2.1
1	E	269	GLN	2.1
1	E	100	VAL	2.1
1	T	-1	THR	2.1
1	U	172	GLN	2.1
1	U	68	LEU	2.1
1	Y	252	LEU	2.1
1	S	123	LYS	2.1
1	T	99	PRO	2.1

Continued on next page...

Continued from previous page...

Mol	Chain	Res	Type	RSRZ
1	E	1	MET	2.1
1	S	1	MET	2.1
1	U	79	VAL	2.1
1	E	58	ARG	2.1
1	Y	102	VAL	2.0
1	U	269	GLN	2.0
1	E	252	LEU	2.0
1	U	274	PHE	2.0
1	U	180	GLN	2.0
1	S	250	GLU	2.0
1	T	117	ALA	2.0

6.2 Non-standard residues in protein, DNA, RNA chains [i](#)

There are no non-standard protein/DNA/RNA residues in this entry.

6.3 Carbohydrates [i](#)

There are no carbohydrates in this entry.

6.4 Ligands [i](#)

In the following table, the Atoms column lists the number of modelled atoms in the group and the number defined in the chemical component dictionary. LLDF column lists the quality of electron density of the group with respect to its neighbouring residues in protein, DNA or RNA chains. The B-factors column lists the minimum, median, 95th percentile and maximum values of B factors of atoms in the group. The column labelled 'Q< 0.9' lists the number of atoms with occupancy less than 0.9.

Mol	Type	Chain	Res	Atoms	RSCC	RSR	LLDF	B-factors(Å ²)	Q<0.9
3	PO4	S	290	5/5	0.97	0.17	4.96	48,49,49,50	0
3	PO4	U	291	5/5	0.98	0.13	1.16	42,42,44,44	0
3	PO4	Q	292	5/5	0.96	0.20	1.07	67,67,68,68	0
2	IM5	T	291	20/20	0.96	0.18	0.87	29,33,38,43	0
2	IM5	Y	292	20/20	0.97	0.17	0.87	34,36,39,41	0
2	IM5	E	290	20/20	0.95	0.16	0.78	33,38,42,45	0
3	PO4	T	290	5/5	0.97	0.18	0.63	66,66,66,67	0
3	PO4	S	292	5/5	0.98	0.13	0.38	39,39,41,42	0
2	IM5	S	291	20/20	0.97	0.13	0.20	32,36,39,42	0
3	PO4	E	292	5/5	0.94	0.18	0.15	64,64,66,67	0

Continued on next page...

Continued from previous page...

Mol	Type	Chain	Res	Atoms	RSCC	RSR	LLDF	B-factors(\AA^2)	Q<0.9
3	PO4	E	291	5/5	0.99	0.13	0.14	36,37,38,41	0
2	IM5	U	290	20/20	0.95	0.14	0.09	32,36,39,41	0
3	PO4	Q	291	5/5	0.99	0.12	-0.05	35,36,37,40	0
3	PO4	T	292	5/5	0.98	0.12	-0.23	42,44,46,47	0
3	PO4	Y	290	5/5	0.97	0.10	-0.55	62,62,62,63	0
2	IM5	Q	290	20/20	0.97	0.10	-0.73	26,30,37,37	0
3	PO4	Y	293	5/5	0.99	0.10	-0.88	35,35,36,36	0
3	PO4	Y	291	5/5	0.95	0.33	-	95,95,95,95	0

6.5 Other polymers [i](#)

There are no such residues in this entry.