



wwPDB X-ray Structure Validation Summary Report ⓘ

Feb 1, 2016 – 07:40 PM GMT

PDB ID : 4PJ5
Title : Structure of human MR1-Ac-6-FP in complex with human MAIT TRBV6-1 TCR
Authors : Birkinshaw, R.W.; Rossjohn, J.
Deposited on : 2014-05-12
Resolution : 2.00 Å(reported)

This is a wwPDB X-ray Structure Validation Summary Report for a publicly released PDB entry.
We welcome your comments at validation@mail.wwpdb.org
A user guide is available at
<http://wwpdb.org/validation/2016/XrayValidationReportHelp>
with specific help available everywhere you see the ⓘ symbol.

The following versions of software and data (see [references ⓘ](#)) were used in the production of this report:

MolProbity : 4.02b-467
Mogul : 1.7 (RC4), CSD as536be (2015)
Xtriage (Phenix) : 1.9-1692
EDS : rb-20026688
Percentile statistics : 20151230.v01 (using entries in the PDB archive December 30th 2015)
Refmac : 5.8.0135
CCP4 : 6.5.0
Ideal geometry (proteins) : Engh & Huber (2001)
Ideal geometry (DNA, RNA) : Parkinson et al. (1996)
Validation Pipeline (wwPDB-VP) : trunk26865

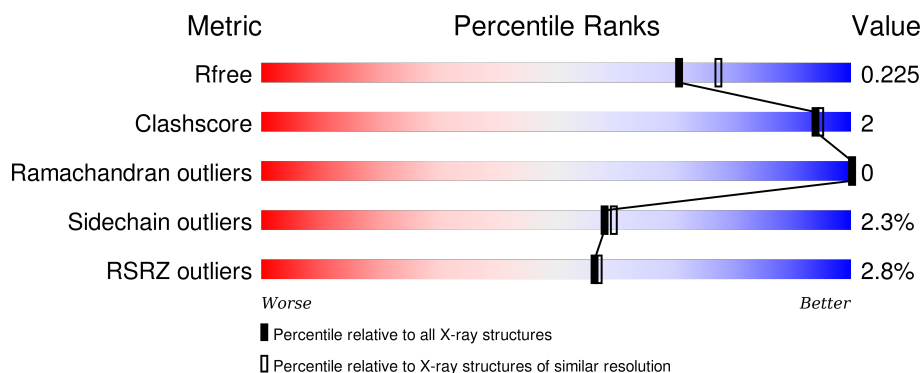
1 Overall quality at a glance ⓘ

The following experimental techniques were used to determine the structure:

X-RAY DIFFRACTION

The reported resolution of this entry is 2.00 Å.

Percentile scores (ranging between 0-100) for global validation metrics of the entry are shown in the following graphic. The table shows the number of entries on which the scores are based.



Metric	Whole archive (#Entries)	Similar resolution (#Entries, resolution range(Å))
R_{free}	91344	6249 (2.00-2.00)
Clashscore	102246	7340 (2.00-2.00)
Ramachandran outliers	100387	7248 (2.00-2.00)
Sidechain outliers	100360	7247 (2.00-2.00)
RSRZ outliers	91569	6262 (2.00-2.00)

The table below summarises the geometric issues observed across the polymeric chains and their fit to the electron density. The red, orange, yellow and green segments on the lower bar indicate the fraction of residues that contain outliers for ≥ 3 , 2, 1 and 0 types of geometric quality criteria. A grey segment represents the fraction of residues that are not modelled. The numeric value for each fraction is indicated below the corresponding segment, with a dot representing fractions $\leq 5\%$. The upper red bar (where present) indicates the fraction of residues that have poor fit to the electron density. The numeric value is given above the bar.

Mol	Chain	Length	Quality of chain
1	A	271	<div> <div>91%</div> <div>6%</div> <div>.</div> </div>
1	C	271	<div> <div>3%</div> <div>88%</div> <div>7%</div> <div>5%</div> </div>
2	B	100	<div> <div>94%</div> <div>5%</div> <div>.</div> </div>
2	F	100	<div> <div>8%</div> <div>92%</div> <div>5%</div> <div>.</div> </div>
3	D	203	<div> <div>92%</div> <div>7%</div> <div>.</div> </div>

Continued on next page...

Continued from previous page...

Mol	Chain	Length	Quality of chain
3	G	203	<div><div></div><div>5%</div><div>87%</div><div>6%</div><div>6%</div></div>
4	E	245	<div><div></div><div>%</div><div>93%</div><div>6%</div><div>•</div></div>
4	H	245	<div><div></div><div>4%</div><div>94%</div><div>5%</div><div>•</div></div>

2 Entry composition

There are 6 unique types of molecules in this entry. The entry contains 14075 atoms, of which 0 are hydrogens and 0 are deuteriums.

In the tables below, the ZeroOcc column contains the number of atoms modelled with zero occupancy, the AltConf column contains the number of residues with at least one atom in alternate conformation and the Trace column contains the number of residues modelled with at most 2 atoms.

- Molecule 1 is a protein called Major histocompatibility complex class I-related gene protein.

Mol	Chain	Residues	Atoms					ZeroOcc	AltConf	Trace
1	A	263	Total	C	N	O	S	0	2	0
			2181	1398	377	396	10			
1	C	258	Total	C	N	O	S	0	4	0
			2117	1352	367	388	10			

There are 4 discrepancies between the modelled and reference sequences:

Chain	Residue	Modelled	Actual	Comment	Reference
A	0	MET	-	initiating methionine	UNP Q95460
A	261	SER	CYS	engineered mutation	UNP Q95460
C	0	MET	-	initiating methionine	UNP Q95460
C	261	SER	CYS	engineered mutation	UNP Q95460

- Molecule 2 is a protein called Beta-2-microglobulin.

Mol	Chain	Residues	Atoms					ZeroOcc	AltConf	Trace
2	B	99	Total	C	N	O	S	0	0	0
			806	514	134	155	3			
2	F	97	Total	C	N	O	S	0	1	0
			777	498	130	147	2			

There are 2 discrepancies between the modelled and reference sequences:

Chain	Residue	Modelled	Actual	Comment	Reference
B	0	MET	-	expression tag	UNP P61769
F	0	MET	-	expression tag	UNP P61769

- Molecule 3 is a protein called TCR-alpha.

Mol	Chain	Residues	Atoms					ZeroOcc	AltConf	Trace
3	D	200	Total	C	N	O	S	0	1	0
			1561	984	249	319	9			

Continued on next page...

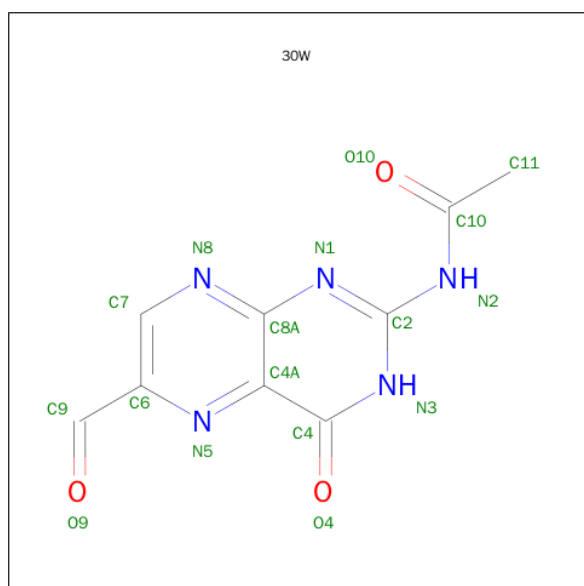
Continued from previous page...

Mol	Chain	Residues	Atoms					ZeroOcc	AltConf	Trace
3	G	190	Total	C	N	O	S	0	3	0
			1468	935	231	293	9			

- Molecule 4 is a protein called TCR-beta.

Mol	Chain	Residues	Atoms					ZeroOcc	AltConf	Trace
4	E	243	Total	C	N	O	S	0	3	0
			1947	1228	338	372	9			
4	H	242	Total	C	N	O	S	0	1	0
			1878	1184	323	362	9			

- Molecule 5 is N-(6-formyl-4-oxo-3,4-dihydropteridin-2-yl)acetamide (three-letter code: 30W) (formula: C₉H₇N₅O₃).



Continued from previous page...

Mol	Chain	Residues	Atoms		ZeroOcc	AltConf
6	B	108	Total 108	O 108	0	0
6	C	194	Total 194	O 194	0	0
6	D	201	Total 201	O 201	0	0
6	E	221	Total 221	O 221	0	0
6	F	60	Total 60	O 60	0	0
6	G	127	Total 127	O 127	0	0
6	H	161	Total 161	O 161	0	0

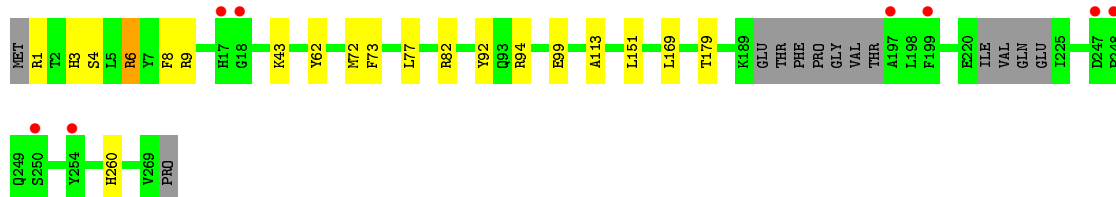
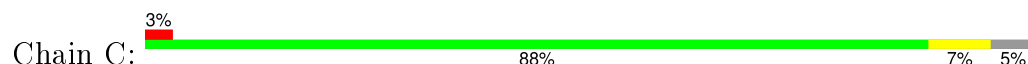
3 Residue-property plots [i](#)

These plots are drawn for all protein, RNA and DNA chains in the entry. The first graphic for a chain summarises the proportions of errors displayed in the second graphic. The second graphic shows the sequence view annotated by issues in geometry and electron density. Residues are color-coded according to the number of geometric quality criteria for which they contain at least one outlier: green = 0, yellow = 1, orange = 2 and red = 3 or more. A red dot above a residue indicates a poor fit to the electron density ($RSRZ > 2$). Stretches of 2 or more consecutive residues without any outlier are shown as a green connector. Residues present in the sample, but not in the model, are shown in grey.

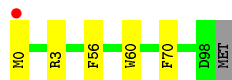
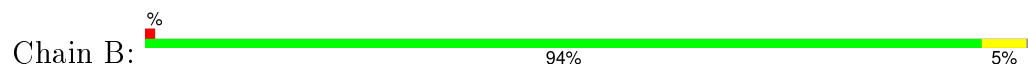
- Molecule 1: Major histocompatibility complex class I-related gene protein



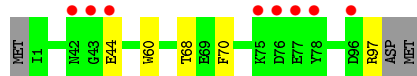
- Molecule 1: Major histocompatibility complex class I-related gene protein



- Molecule 2: Beta-2-microglobulin



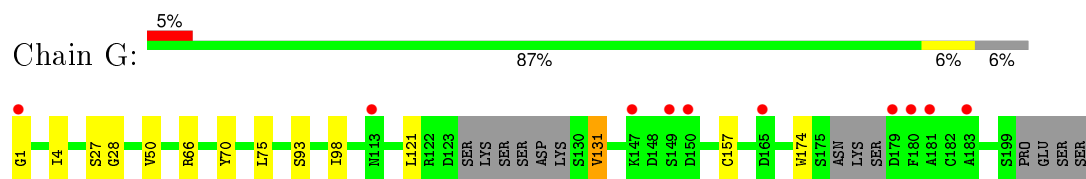
- Molecule 2: Beta-2-microglobulin



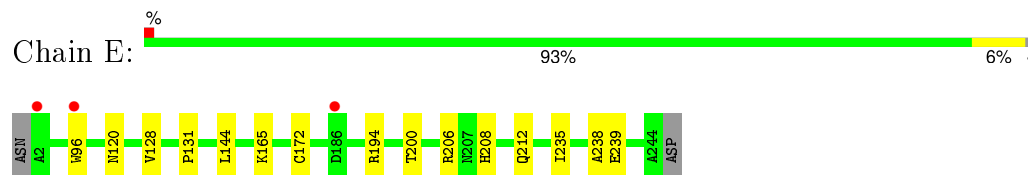
- Molecule 3: TCR-alpha



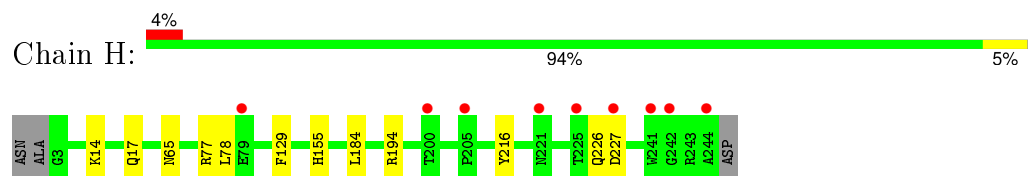
- Molecule 3: TCR-alpha



- Molecule 4: TCR-beta



- Molecule 4: TCR-beta



4 Data and refinement statistics

Property	Value	Source
Space group	C 1 2 1	Depositor
Cell constants a, b, c, α , β , γ	216.68Å 69.87Å 142.81Å 90.00° 104.14° 90.00°	Depositor
Resolution (Å)	39.83 – 2.00 39.83 – 2.00	Depositor EDS
% Data completeness (in resolution range)	99.3 (39.83-2.00) 99.3 (39.83-2.00)	Depositor EDS
R_{merge}	(Not available)	Depositor
R_{sym}	(Not available)	Depositor
$\langle I/\sigma(I) \rangle$ ¹	2.58 (at 2.00Å)	Xtriage
Refinement program	BUSTER 2.10.0	Depositor
R, R_{free}	0.180 , 0.220 0.185 , 0.225	Depositor DCC
R_{free} test set	7015 reflections (5.31%)	DCC
Wilson B-factor (Å ²)	28.1	Xtriage
Anisotropy	0.224	Xtriage
Bulk solvent k_{sol} (e/Å ³), B_{sol} (Å ²)	0.34 , 52.8	EDS
Estimated twinning fraction	No twinning to report.	Xtriage
L-test for twinning ²	$\langle L \rangle = 0.49$, $\langle L^2 \rangle = 0.32$	Xtriage
Outliers	0 of 139212 reflections	Xtriage
F_o, F_c correlation	0.96	EDS
Total number of atoms	14075	wwPDB-VP
Average B, all atoms (Å ²)	35.0	wwPDB-VP

Xtriage's analysis on translational NCS is as follows: *The largest off-origin peak in the Patterson function is 3.69% of the height of the origin peak. No significant pseudotranslation is detected.*

¹Intensities estimated from amplitudes.

²Theoretical values of $\langle |L| \rangle$, $\langle L^2 \rangle$ for acentric reflections are 0.5, 0.375 respectively for untwinned datasets, and 0.333, 0.2 for perfectly twinned datasets.

5 Model quality [i](#)

5.1 Standard geometry [i](#)

Bond lengths and bond angles in the following residue types are not validated in this section: 30W

The Z score for a bond length (or angle) is the number of standard deviations the observed value is removed from the expected value. A bond length (or angle) with $|Z| > 5$ is considered an outlier worth inspection. RMSZ is the root-mean-square of all Z scores of the bond lengths (or angles).

Mol	Chain	Bond lengths		Bond angles	
		RMSZ	# Z >5	RMSZ	# Z >5
1	A	0.54	0/2253	0.63	0/3061
1	C	0.53	0/2192	0.62	0/2980
2	B	0.47	0/829	0.64	0/1128
2	F	0.44	0/803	0.61	0/1096
3	D	0.55	0/1599	0.67	0/2170
3	G	0.50	0/1509	0.65	0/2048
4	E	0.54	0/2010	0.65	0/2734
4	H	0.45	0/1932	0.64	0/2635
All	All	0.51	0/13127	0.64	0/17852

There are no bond length outliers.

There are no bond angle outliers.

There are no chirality outliers.

There are no planarity outliers.

5.2 Too-close contacts [i](#)

In the following table, the Non-H and H(model) columns list the number of non-hydrogen atoms and hydrogen atoms in the chain respectively. The H(added) column lists the number of hydrogen atoms added and optimized by MolProbity. The Clashes column lists the number of clashes within the asymmetric unit, whereas Symm-Clashes lists symmetry related clashes.

Mol	Chain	Non-H	H(model)	H(added)	Clashes	Symm-Clashes
1	A	2181	0	2076	9	0
1	C	2117	0	1988	12	0
2	B	806	0	746	4	0
2	F	777	0	713	1	0
3	D	1561	0	1465	7	0

Continued on next page...

Continued from previous page...

Mol	Chain	Non-H	H(model)	H(added)	Clashes	Symm-Clashes
3	G	1468	0	1376	7	0
4	E	1947	0	1848	8	0
4	H	1878	0	1748	4	0
5	A	16	0	6	0	0
5	C	16	0	6	0	0
6	A	236	0	0	1	0
6	B	108	0	0	2	0
6	C	194	0	0	3	0
6	D	201	0	0	0	0
6	E	221	0	0	2	0
6	F	60	0	0	0	0
6	G	127	0	0	0	0
6	H	161	0	0	0	0
All	All	14075	0	11972	44	0

The all-atom clashscore is defined as the number of clashes found per 1000 atoms (including hydrogen atoms). The all-atom clashscore for this structure is 2.

The worst 5 of 44 close contacts within the same asymmetric unit are listed below, sorted by their clash magnitude.

Atom-1	Atom-2	Interatomic distance (Å)	Clash overlap (Å)
3:D:1:GLY:HA2	3:D:27:SER:H	1.49	0.77
3:G:28:GLY:HA3	3:G:93[B]:SER:OG	1.95	0.67
1:A:179:THR:HG21	6:A:916:HOH:O	1.95	0.66
4:H:155:HIS:HB3	4:H:216:TYR:HB2	1.86	0.58
1:A:215:MET:HG3	1:A:257:HIS:CD2	2.41	0.55

There are no symmetry-related clashes.

5.3 Torsion angles ⓘ

5.3.1 Protein backbone ⓘ

In the following table, the Percentiles column shows the percent Ramachandran outliers of the chain as a percentile score with respect to all X-ray entries followed by that with respect to entries of similar resolution.

The Analysed column shows the number of residues for which the backbone conformation was analysed, and the total number of residues.

Mol	Chain	Analysed	Favoured	Allowed	Outliers	Percentiles	
1	A	261/271 (96%)	256 (98%)	5 (2%)	0	100	100
1	C	256/271 (94%)	252 (98%)	4 (2%)	0	100	100
2	B	97/100 (97%)	96 (99%)	1 (1%)	0	100	100
2	F	96/100 (96%)	93 (97%)	3 (3%)	0	100	100
3	D	199/203 (98%)	196 (98%)	3 (2%)	0	100	100
3	G	187/203 (92%)	180 (96%)	7 (4%)	0	100	100
4	E	244/245 (100%)	239 (98%)	5 (2%)	0	100	100
4	H	241/245 (98%)	239 (99%)	2 (1%)	0	100	100
All	All	1581/1638 (96%)	1551 (98%)	30 (2%)	0	100	100

There are no Ramachandran outliers to report.

5.3.2 Protein sidechains ⓘ

In the following table, the Percentiles column shows the percent sidechain outliers of the chain as a percentile score with respect to all X-ray entries followed by that with respect to entries of similar resolution.

The Analysed column shows the number of residues for which the sidechain conformation was analysed, and the total number of residues.

Mol	Chain	Analysed	Rotameric	Outliers	Percentiles	
1	A	232/241 (96%)	227 (98%)	5 (2%)	60	62
1	C	224/241 (93%)	220 (98%)	4 (2%)	66	69
2	B	89/95 (94%)	87 (98%)	2 (2%)	60	62
2	F	84/95 (88%)	80 (95%)	4 (5%)	31	26
3	D	175/180 (97%)	172 (98%)	3 (2%)	68	71
3	G	161/180 (89%)	157 (98%)	4 (2%)	55	55
4	E	212/211 (100%)	208 (98%)	4 (2%)	65	67
4	H	200/211 (95%)	195 (98%)	5 (2%)	55	55
All	All	1377/1454 (95%)	1346 (98%)	31 (2%)	58	60

5 of 31 residues with a non-rotameric sidechain are listed below:

Mol	Chain	Res	Type
4	E	120	ASN
4	E	206	ARG

Continued on next page...

Continued from previous page...

Mol	Chain	Res	Type
4	H	194	ARG
4	E	165	LYS
2	F	44	GLU

Some sidechains can be flipped to improve hydrogen bonding and reduce clashes. All (5) such sidechains are listed below:

Mol	Chain	Res	Type
1	A	217	ASN
1	C	83	HIS
1	C	260	HIS
4	E	208	HIS
4	H	65	ASN

5.3.3 RNA [i](#)

There are no RNA molecules in this entry.

5.4 Non-standard residues in protein, DNA, RNA chains [i](#)

There are no non-standard protein/DNA/RNA residues in this entry.

5.5 Carbohydrates [i](#)

There are no carbohydrates in this entry.

5.6 Ligand geometry [i](#)

2 ligands are modelled in this entry.

In the following table, the Counts columns list the number of bonds (or angles) for which Mogul statistics could be retrieved, the number of bonds (or angles) that are observed in the model and the number of bonds (or angles) that are defined in the chemical component dictionary. The Link column lists molecule types, if any, to which the group is linked. The Z score for a bond length (or angle) is the number of standard deviations the observed value is removed from the expected value. A bond length (or angle) with $|Z| > 2$ is considered an outlier worth inspection. RMSZ is the root-mean-square of all Z scores of the bond lengths (or angles).

Mol	Type	Chain	Res	Link	Bond lengths			Bond angles		
					Counts	RMSZ	$\# Z > 2$	Counts	RMSZ	$\# Z > 2$
5	30W	A	600	1	16,17,18	2.40	5 (31%)	19,24,25	2.51	7 (36%)

Mol	Type	Chain	Res	Link	Bond lengths			Bond angles		
					Counts	RMSZ	# Z > 2	Counts	RMSZ	# Z > 2
5	30W	C	600	1	16,17,18	2.52	7 (43%)	19,24,25	2.65	11 (57%)

In the following table, the Chirals column lists the number of chiral outliers, the number of chiral centers analysed, the number of these observed in the model and the number defined in the chemical component dictionary. Similar counts are reported in the Torsion and Rings columns. '-' means no outliers of that kind were identified.

Mol	Type	Chain	Res	Link	Chirals	Torsions	Rings
5	30W	A	600	1	-	0/4/4/6	0/2/2/2
5	30W	C	600	1	-	0/4/4/6	0/2/2/2

The worst 5 of 12 bond length outliers are listed below:

Mol	Chain	Res	Type	Atoms	Z	Observed(Å)	Ideal(Å)
5	C	600	30W	C2-N2	-4.44	1.34	1.39
5	C	600	30W	C9-C6	-3.98	1.40	1.50
5	A	600	30W	C9-C6	-3.98	1.40	1.50
5	A	600	30W	C2-N2	-3.84	1.34	1.39
5	C	600	30W	C11-C10	2.01	1.54	1.50

The worst 5 of 18 bond angle outliers are listed below:

Mol	Chain	Res	Type	Atoms	Z	Observed(°)	Ideal(°)
5	A	600	30W	C2-N2-C10	-5.02	122.36	130.17
5	C	600	30W	N1-C2-N3	-4.36	119.51	126.22
5	A	600	30W	N1-C2-N3	-4.28	119.64	126.22
5	C	600	30W	C2-N2-C10	-4.08	123.82	130.17
5	A	600	30W	C4A-C4-N3	-3.82	118.37	123.59

There are no chirality outliers.

There are no torsion outliers.

There are no ring outliers.

No monomer is involved in short contacts.

5.7 Other polymers [i](#)

There are no such residues in this entry.

5.8 Polymer linkage issues ⓘ

There are no chain breaks in this entry.

6 Fit of model and data ⓘ

6.1 Protein, DNA and RNA chains ⓘ

In the following table, the column labelled ‘#RSRZ> 2’ contains the number (and percentage) of RSRZ outliers, followed by percent RSRZ outliers for the chain as percentile scores relative to all X-ray entries and entries of similar resolution. The OWAB column contains the minimum, median, 95th percentile and maximum values of the occupancy-weighted average B-factor per residue. The column labelled ‘Q< 0.9’ lists the number of (and percentage) of residues with an average occupancy less than 0.9.

Mol	Chain	Analysed	<RSRZ>	#RSRZ>2	OWAB(Å ²)	Q<0.9
1	A	263/271 (97%)	-0.30	4 (1%) 76 77	19, 28, 53, 74	0
1	C	258/271 (95%)	-0.22	8 (3%) 52 53	19, 30, 55, 73	0
2	B	99/100 (99%)	-0.20	1 (1%) 84 84	22, 33, 59, 65	0
2	F	97/100 (97%)	0.32	8 (8%) 14 15	25, 46, 68, 80	0
3	D	200/203 (98%)	-0.33	2 (1%) 84 84	16, 26, 52, 70	0
3	G	190/203 (93%)	0.10	10 (5%) 30 32	19, 38, 75, 97	0
4	E	243/245 (99%)	-0.46	3 (1%) 81 81	18, 27, 47, 68	0
4	H	242/245 (98%)	-0.16	9 (3%) 45 47	21, 37, 64, 99	0
All	All	1592/1638 (97%)	-0.20	45 (2%) 56 57	16, 31, 62, 99	0

The worst 5 of 45 RSRZ outliers are listed below:

Mol	Chain	Res	Type	RSRZ
3	G	149	SER	4.8
4	H	225	THR	4.5
1	C	250	SER	4.4
1	C	247	ASP	3.7
1	C	18	GLY	3.7

6.2 Non-standard residues in protein, DNA, RNA chains ⓘ

There are no non-standard protein/DNA/RNA residues in this entry.

6.3 Carbohydrates ⓘ

There are no carbohydrates in this entry.

6.4 Ligands [i](#)

In the following table, the Atoms column lists the number of modelled atoms in the group and the number defined in the chemical component dictionary. LLDF column lists the quality of electron density of the group with respect to its neighbouring residues in protein, DNA or RNA chains. The B-factors column lists the minimum, median, 95th percentile and maximum values of B factors of atoms in the group. The column labelled 'Q< 0.9' lists the number of atoms with occupancy less than 0.9.

Mol	Type	Chain	Res	Atoms	RSCC	RSR	LLDF	B-factors(\AA^2)	Q<0.9
5	30W	A	600	16/17	0.98	0.12	0.04	21,24,26,27	0
5	30W	C	600	16/17	0.97	0.10	-0.44	21,23,24,24	0

6.5 Other polymers [i](#)

There are no such residues in this entry.