



# Full wwPDB X-ray Structure Validation Report ⓘ

Jan 31, 2016 – 09:34 PM GMT

PDB ID : 1PK0  
Title : Crystal Structure of the EF3-CaM complexed with PMEApp  
Authors : Shen, Y.; Tang, W.J.  
Deposited on : 2003-06-04  
Resolution : 3.30 Å(reported)

This is a Full wwPDB X-ray Structure Validation Report for a publicly released PDB entry.  
We welcome your comments at [validation@mail.wwpdb.org](mailto:validation@mail.wwpdb.org)  
A user guide is available at  
<http://wwpdb.org/validation/2016/XrayValidationReportHelp>  
with specific help available everywhere you see the ⓘ symbol.

---

The following versions of software and data (see [references ⓘ](#)) were used in the production of this report:

MolProbity : 4.02b-467  
Mogul : 1.7 (RC4), CSD as536be (2015)  
Xtriage (Phenix) : 1.9-1692  
EDS : rb-20026688  
Percentile statistics : 20151230.v01 (using entries in the PDB archive December 30th 2015)  
Refmac : 5.8.0135  
CCP4 : 6.5.0  
Ideal geometry (proteins) : Engh & Huber (2001)  
Ideal geometry (DNA, RNA) : Parkinson et al. (1996)  
Validation Pipeline (wwPDB-VP) : trunk26865

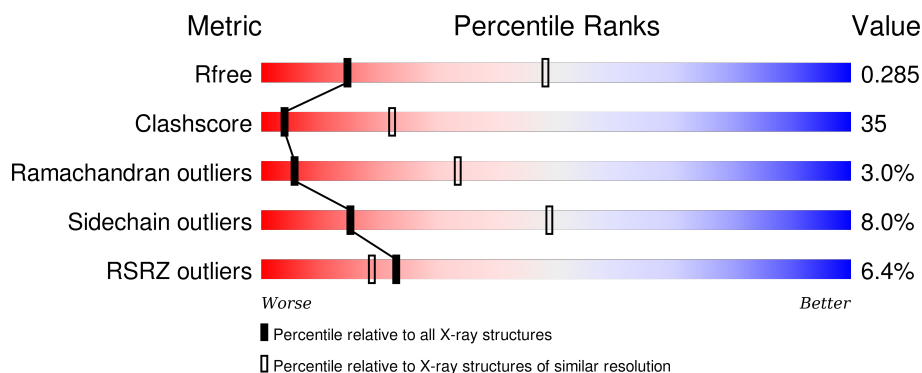
# 1 Overall quality at a glance

The following experimental techniques were used to determine the structure:

## *X-RAY DIFFRACTION*

The reported resolution of this entry is 3.30 Å.

Percentile scores (ranging between 0-100) for global validation metrics of the entry are shown in the following graphic. The table shows the number of entries on which the scores are based.




Metric	Whole archive (#Entries)	Similar resolution (#Entries, resolution range(Å))
$R_{free}$	91344	2060 (3.40-3.20)
Clashscore	102246	1058 (3.38-3.22)
Ramachandran outliers	100387	1038 (3.38-3.22)
Sidechain outliers	100360	1037 (3.38-3.22)
RSRZ outliers	91569	2070 (3.40-3.20)

The table below summarises the geometric issues observed across the polymeric chains and their fit to the electron density. The red, orange, yellow and green segments on the lower bar indicate the fraction of residues that contain outliers for  $\geq 3$ , 2, 1 and 0 types of geometric quality criteria. A grey segment represents the fraction of residues that are not modelled. The numeric value for each fraction is indicated below the corresponding segment, with a dot representing fractions  $\leq 5\%$ . The upper red bar (where present) indicates the fraction of residues that have poor fit to the electron density. The numeric value is given above the bar.

Mol	Chain	Length	Quality of chain
1	A	507	
1	B	507	
1	C	507	
2	D	147	
2	E	147	

*Continued on next page...*

*Continued from previous page...*

Mol	Chain	Length	Quality of chain
2	F	147	 <p>A horizontal bar chart showing the quality of chain F. The bar is divided into four segments: red (16%), green (51%), yellow (44%), and grey (1%). The red segment is labeled '16%', the green segment is labeled '51%', and the yellow segment is labeled '44%'. The grey segment at the end is labeled with two dots '• •'.</p>

## 2 Entry composition

There are 6 unique types of molecules in this entry. The entry contains 15344 atoms, of which 0 are hydrogens and 0 are deuteriums.

In the tables below, the ZeroOcc column contains the number of atoms modelled with zero occupancy, the AltConf column contains the number of residues with at least one atom in alternate conformation and the Trace column contains the number of residues modelled with at most 2 atoms.

- Molecule 1 is a protein called Calmodulin-sensitive adenylate cyclase.

Mol	Chain	Residues	Atoms					ZeroOcc	AltConf	Trace
1	A	484	Total	C	N	O	S	65	0	0
			3947	2525	672	747	3			
1	B	470	Total	C	N	O	S	113	0	0
			3820	2446	647	724	3			
1	C	503	Total	C	N	O	S	166	0	0
			4095	2616	696	780	3			

- Molecule 2 is a protein called Calmodulin.

Mol	Chain	Residues	Atoms					ZeroOcc	AltConf	Trace
2	D	143	Total	C	N	O	S	0	0	0
			1126	690	181	246	9			
2	E	143	Total	C	N	O	S	0	0	0
			1126	690	181	246	9			
2	F	143	Total	C	N	O	S	0	0	0
			1126	690	181	246	9			

- Molecule 3 is CALCIUM ION (three-letter code: CA) (formula: Ca).

Mol	Chain	Residues	Atoms		ZeroOcc	AltConf
3	D	2	Total	Ca	0	0
			2	2		
3	F	2	Total	Ca	0	0
			2	2		
3	E	2	Total	Ca	0	0
			2	2		

- Molecule 4 is YTTERBIUM (III) ION (three-letter code: YB) (formula: Yb).

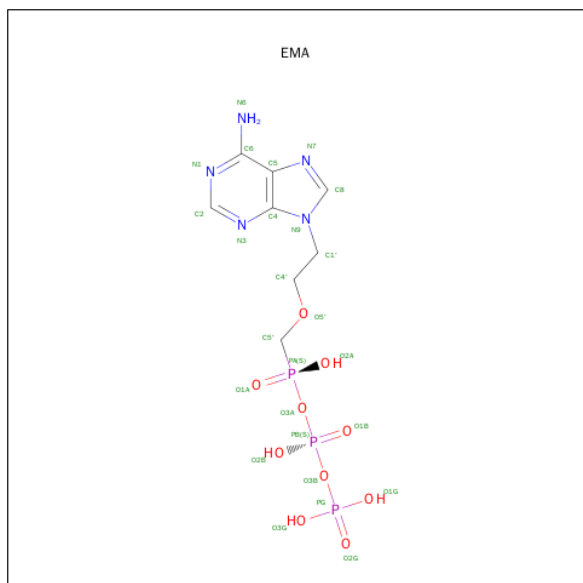
Mol	Chain	Residues	Atoms		ZeroOcc	AltConf
4	B	1	Total	Yb	0	0
			1	1		

*Continued on next page...*

Continued from previous page...

Mol	Chain	Residues	Atoms		ZeroOcc	AltConf
4	A	1	Total	Yb	0	0
			1	1		
4	C	1	Total	Yb	0	0
			1	1		

- Molecule 5 is (ADENIN-9-YL-ETHOXYMETHYL)-HYDROXYPHOSPHINYLDIPHOSPHATE (three-letter code: EMA) (formula:  $C_8H_{14}N_5O_{10}P_3$ ).



Mol	Chain	Residues	Atoms					ZeroOcc	AltConf
5	A	1	Total	C	N	O	P	0	0
			26	8	5	10	3		
5	B	1	Total	C	N	O	P	0	0
			26	8	5	10	3		
5	C	1	Total	C	N	O	P	0	0
			26	8	5	10	3		

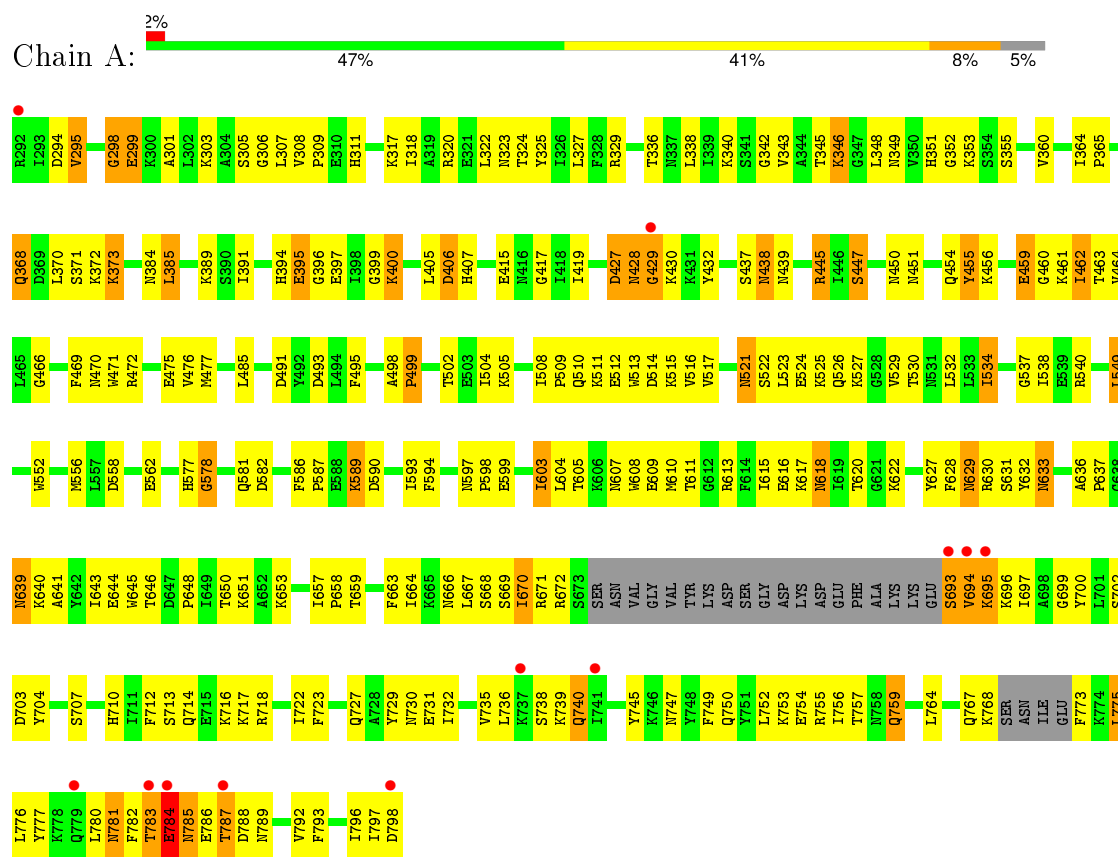
- Molecule 6 is water.

Mol	Chain	Residues	Atoms		ZeroOcc	AltConf
6	A	6	Total	O	0	0
			6	6		
6	B	6	Total	O	0	0
			6	6		
6	C	4	Total	O	0	0
			4	4		
6	D	1	Total	O	0	0
			1	1		

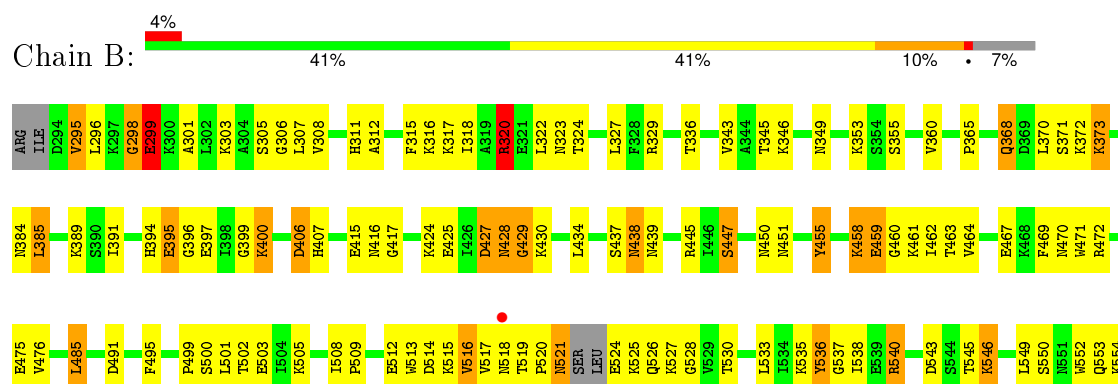
### 3 Residue-property plots

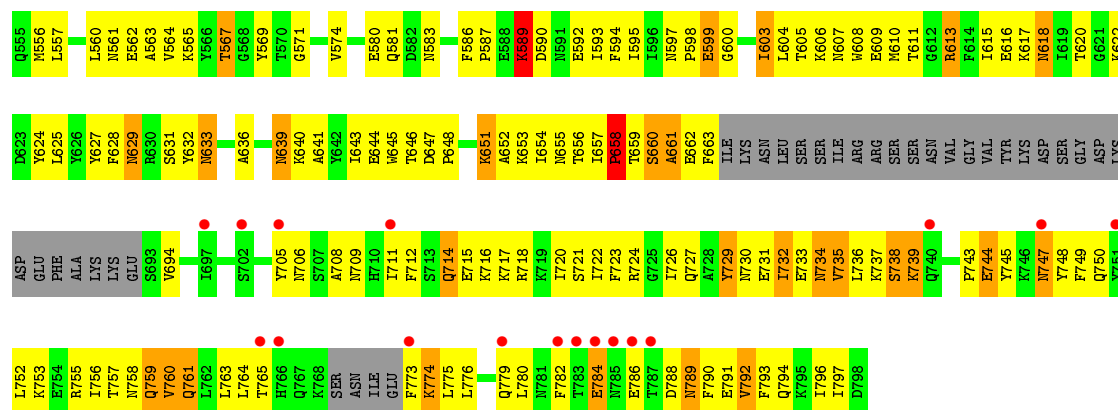
These plots are drawn for all protein, RNA and DNA chains in the entry. The first graphic for a chain summarises the proportions of errors displayed in the second graphic. The second graphic shows the sequence view annotated by issues in geometry and electron density. Residues are color-coded according to the number of geometric quality criteria for which they contain at least one outlier: green = 0, yellow = 1, orange = 2 and red = 3 or more. A red dot above a residue indicates a poor fit to the electron density ( $RSRZ > 2$ ). Stretches of 2 or more consecutive residues without any outlier are shown as a green connector. Residues present in the sample, but not in the model, are shown in grey.

- Molecule 1: Calmodulin-sensitive adenylate cyclase

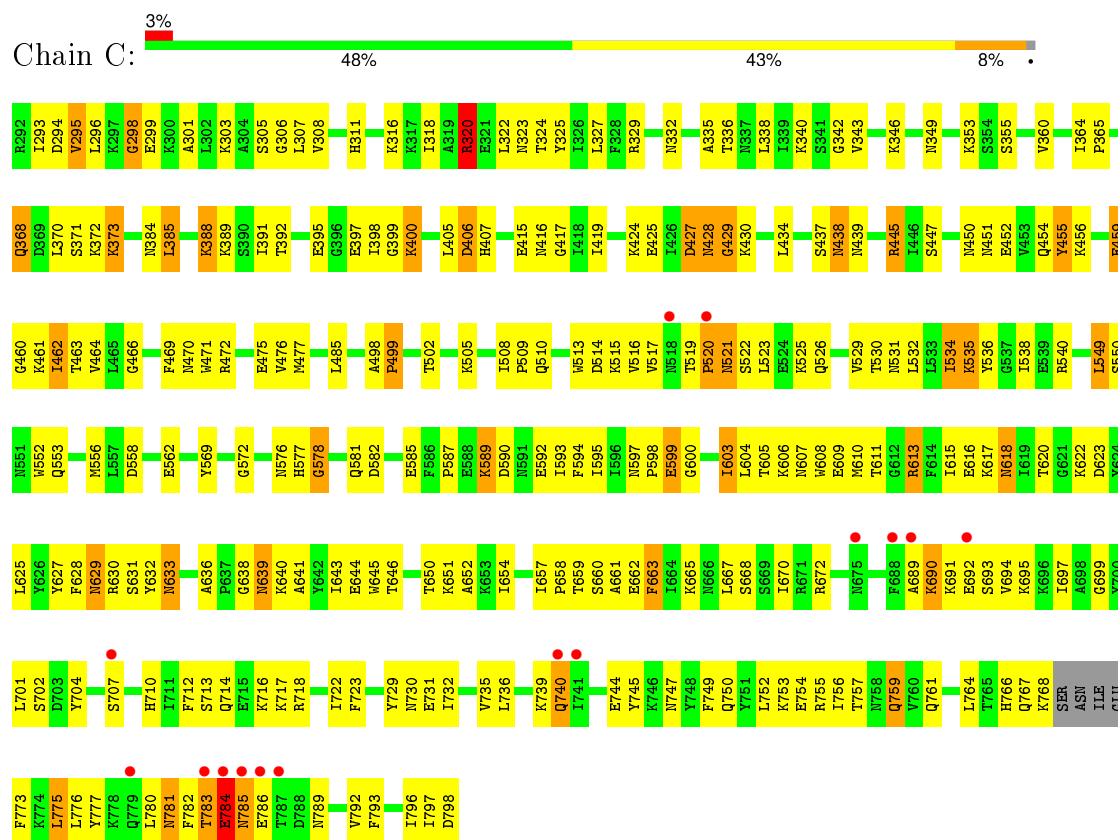


- Molecule 1: Calmodulin-sensitive adenylate cyclase

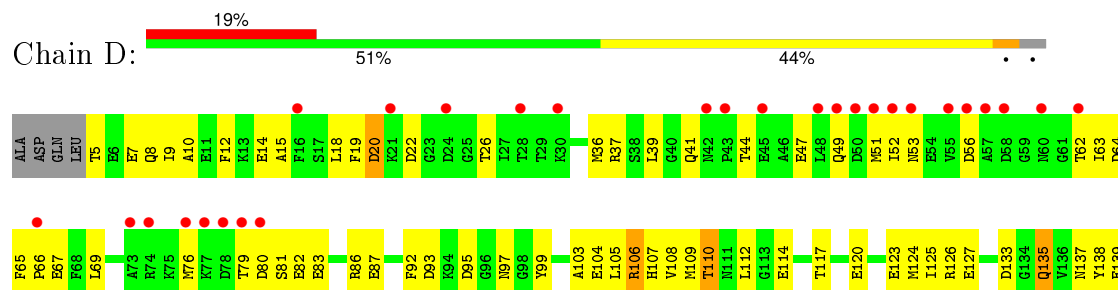




• Molecule 1: Calmodulin-sensitive adenylate cyclase

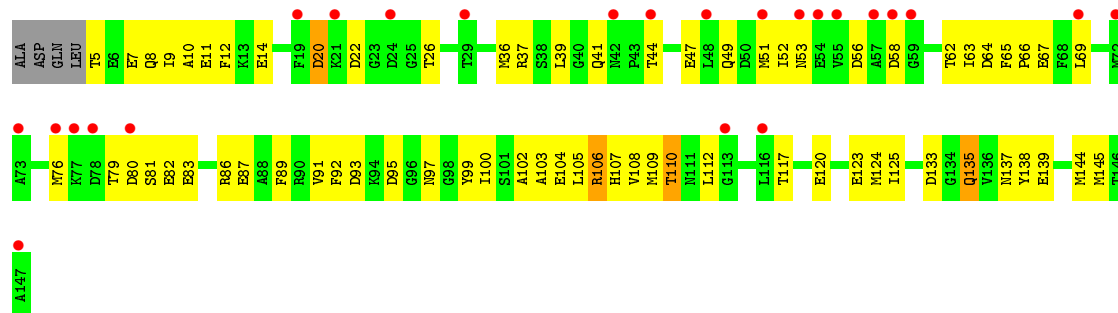


• Molecule 2: Calmodulin

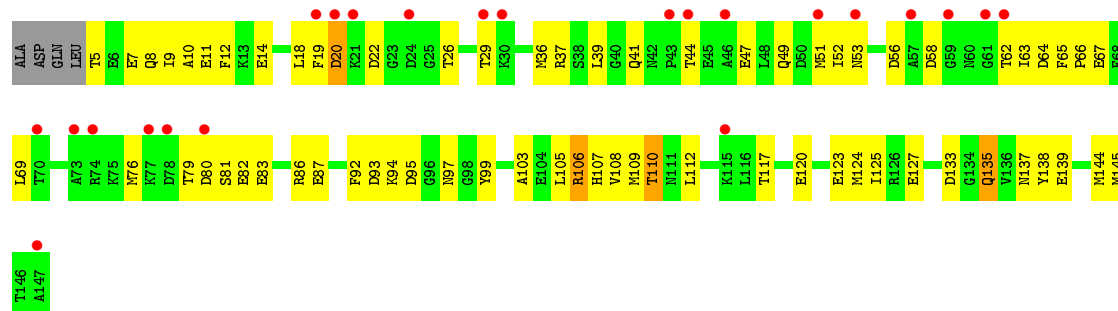




## ● Molecule 2: Calmodulin



## ● Molecule 2: Calmodulin





## 4 Data and refinement statistics

Property	Value	Source
Space group	I 2 2 2	Depositor
Cell constants a, b, c, $\alpha$ , $\beta$ , $\gamma$	116.26 Å   165.76 Å   342.41 Å 90.00°   90.00°   90.00°	Depositor
Resolution (Å)	14.98 – 3.30 29.88 – 3.30	Depositor EDS
% Data completeness (in resolution range)	95.3 (14.98-3.30) 95.1 (29.88-3.30)	Depositor EDS
$R_{merge}$	(Not available)	Depositor
$R_{sym}$	0.09	Depositor
$\langle I/\sigma(I) \rangle$ <sup>1</sup>	5.17 (at 3.31 Å)	Xtriage
Refinement program	CNS 1.1	Depositor
R, $R_{free}$	0.264   ,   0.302 0.255   ,   0.285	Depositor DCC
$R_{free}$ test set	4766 reflections (10.08%)	DCC
Wilson B-factor (Å <sup>2</sup> )	78.4	Xtriage
Anisotropy	0.181	Xtriage
Bulk solvent $k_{sol}$ (e/Å <sup>3</sup> ), $B_{sol}$ (Å <sup>2</sup> )	0.30 , 72.0	EDS
Estimated twinning fraction	No twinning to report.	Xtriage
L-test for twinning <sup>2</sup>	$\langle  L  \rangle = 0.49$ , $\langle L^2 \rangle = 0.32$	Xtriage
Outliers	0 of 49594 reflections	Xtriage
$F_o, F_c$ correlation	0.88	EDS
Total number of atoms	15344	wwPDB-VP
Average B, all atoms (Å <sup>2</sup> )	72.0	wwPDB-VP

Xtriage's analysis on translational NCS is as follows: *The largest off-origin peak in the Patterson function is 2.56% of the height of the origin peak. No significant pseudotranslation is detected.*

<sup>1</sup>Intensities estimated from amplitudes.

<sup>2</sup>Theoretical values of  $\langle |L| \rangle$ ,  $\langle L^2 \rangle$  for acentric reflections are 0.5, 0.375 respectively for untwinned datasets, and 0.333, 0.2 for perfectly twinned datasets.

## 5 Model quality

### 5.1 Standard geometry

Bond lengths and bond angles in the following residue types are not validated in this section: CA, YB, EMA

The Z score for a bond length (or angle) is the number of standard deviations the observed value is removed from the expected value. A bond length (or angle) with  $|Z| > 5$  is considered an outlier worth inspection. RMSZ is the root-mean-square of all Z scores of the bond lengths (or angles).

Mol	Chain	Bond lengths		Bond angles	
		RMSZ	# Z  >5	RMSZ	# Z  >5
1	A	0.60	2/4022 (0.0%)	0.98	22/5411 (0.4%)
1	B	0.54	0/3893	0.87	19/5239 (0.4%)
1	C	0.51	0/4173	0.83	15/5613 (0.3%)
2	D	0.36	0/1138	0.58	2/1527 (0.1%)
2	E	0.37	0/1138	0.58	2/1527 (0.1%)
2	F	0.36	0/1138	0.83	3/1527 (0.2%)
All	All	0.52	2/15502 (0.0%)	0.85	63/20844 (0.3%)

All (2) bond length outliers are listed below:

Mol	Chain	Res	Type	Atoms	Z	Observed(Å)	Ideal(Å)
1	A	694	VAL	N-CA	8.49	1.63	1.46
1	A	785	ASN	N-CA	5.19	1.56	1.46

All (63) bond angle outliers are listed below:

Mol	Chain	Res	Type	Atoms	Z	Observed(°)	Ideal(°)
1	A	613	ARG	NE-CZ-NH1	-19.24	110.68	120.30
2	F	106	ARG	NE-CZ-NH1	-17.92	111.34	120.30
2	F	106	ARG	NE-CZ-NH2	17.43	129.02	120.30
1	A	613	ARG	NE-CZ-NH2	17.10	128.85	120.30
1	A	320	ARG	NE-CZ-NH2	-14.05	113.27	120.30
1	A	320	ARG	NE-CZ-NH1	13.03	126.81	120.30
1	C	613	ARG	NE-CZ-NH2	-11.31	114.64	120.30
1	C	785	ASN	N-CA-C	11.25	141.38	111.00
1	A	785	ASN	N-CA-C	10.81	140.19	111.00
1	B	613	ARG	NE-CZ-NH2	-10.63	114.99	120.30
1	C	613	ARG	NE-CZ-NH1	9.92	125.26	120.30
1	B	428	ASN	N-CA-C	-9.80	84.53	111.00
1	A	694	VAL	CB-CA-C	-9.56	93.23	111.40

*Continued on next page...*

*Continued from previous page...*

Mol	Chain	Res	Type	Atoms	Z	Observed(°)	Ideal(°)
1	A	740	GLN	N-CA-C	-9.03	86.61	111.00
2	E	106	ARG	NE-CZ-NH2	-8.97	115.81	120.30
1	C	783	THR	N-CA-C	8.95	135.17	111.00
1	B	613	ARG	NE-CZ-NH1	8.86	124.73	120.30
2	F	106	ARG	CD-NE-CZ	8.67	135.74	123.60
1	A	428	ASN	N-CA-C	-8.66	87.61	111.00
2	E	106	ARG	NE-CZ-NH1	8.63	124.62	120.30
2	D	106	ARG	NE-CZ-NH2	-8.47	116.06	120.30
2	D	106	ARG	NE-CZ-NH1	8.38	124.49	120.30
1	C	320	ARG	NE-CZ-NH1	-8.21	116.19	120.30
1	B	320	ARG	NE-CZ-NH1	-8.16	116.22	120.30
1	C	784	GLU	C-N-CA	8.11	141.98	121.70
1	A	783	THR	N-CA-C	8.02	132.65	111.00
1	C	428	ASN	N-CA-C	-7.98	89.46	111.00
1	C	320	ARG	NE-CZ-NH2	7.97	124.28	120.30
1	A	613	ARG	CD-NE-CZ	7.94	134.71	123.60
1	B	661	ALA	N-CA-C	-7.93	89.58	111.00
1	B	320	ARG	NE-CZ-NH2	7.59	124.09	120.30
1	A	510	GLN	CA-C-N	7.54	133.78	117.20
1	B	660	SER	N-CA-C	-7.43	90.95	111.00
1	C	784	GLU	CB-CA-C	-7.42	95.55	110.40
1	C	785	ASN	N-CA-CB	-7.04	97.92	110.60
1	B	658	PRO	CA-C-N	-6.90	102.02	117.20
1	B	738	SER	N-CA-C	-6.65	93.05	111.00
1	A	693	SER	N-CA-CB	-6.56	100.67	110.50
1	B	458	LYS	CG-CD-CE	6.53	131.48	111.90
1	A	695	LYS	N-CA-C	6.50	128.56	111.00
1	A	784	GLU	CB-CA-C	-6.40	97.59	110.40
1	B	543	ASP	N-CA-C	-6.30	94.00	111.00
1	B	589	LYS	CD-CE-NZ	6.27	126.12	111.70
1	A	510	GLN	O-C-N	-6.16	112.84	122.70
1	C	740	GLN	N-CA-C	-6.11	94.52	111.00
1	A	785	ASN	CB-CA-C	-6.02	98.36	110.40
1	B	299	GLU	CA-CB-CG	5.90	126.38	113.40
1	A	693	SER	N-CA-C	5.82	126.71	111.00
1	A	320	ARG	CD-NE-CZ	5.82	131.75	123.60
1	A	785	ASN	CA-CB-CG	-5.81	100.63	113.40
1	A	427	ASP	N-CA-C	5.77	126.59	111.00
1	B	732	ILE	N-CA-C	-5.64	95.77	111.00
1	C	427	ASP	N-CA-C	5.55	125.98	111.00
1	B	427	ASP	N-CA-C	5.54	125.97	111.00
1	C	785	ASN	CB-CA-C	-5.49	99.42	110.40

*Continued on next page...*

*Continued from previous page...*

Mol	Chain	Res	Type	Atoms	Z	Observed(°)	Ideal(°)
1	A	672	ARG	CB-CA-C	5.49	121.38	110.40
1	B	546	LYS	N-CA-C	-5.45	96.28	111.00
1	C	766	HIS	CB-CA-C	5.45	121.29	110.40
1	B	658	PRO	CA-N-CD	-5.27	104.12	111.50
1	B	739	LYS	N-CA-C	5.25	125.18	111.00
1	A	510	GLN	C-N-CA	-5.16	108.79	121.70
1	B	658	PRO	O-C-N	5.08	130.83	122.70
1	C	613	ARG	CG-CD-NE	-5.02	101.25	111.80

There are no chirality outliers.

There are no planarity outliers.

## 5.2 Too-close contacts

In the following table, the Non-H and H(model) columns list the number of non-hydrogen atoms and hydrogen atoms in the chain respectively. The H(added) column lists the number of hydrogen atoms added and optimized by MolProbity. The Clashes column lists the number of clashes within the asymmetric unit, whereas Symm-Clashes lists symmetry related clashes.

Mol	Chain	Non-H	H(model)	H(added)	Clashes	Symm-Clashes
1	A	3947	0	3994	277	0
1	B	3820	0	3841	315	0
1	C	4095	0	4133	280	0
2	D	1126	0	1049	66	0
2	E	1126	0	1049	63	0
2	F	1126	0	1049	69	0
3	D	2	0	0	0	0
3	E	2	0	0	0	0
3	F	2	0	0	0	0
4	A	1	0	0	0	0
4	B	1	0	0	0	0
4	C	1	0	0	0	0
5	A	26	0	9	1	0
5	B	26	0	9	5	0
5	C	26	0	9	7	0
6	A	6	0	0	2	0
6	B	6	0	0	0	0
6	C	4	0	0	0	0
6	D	1	0	0	0	0
All	All	15344	0	15142	1027	0

The all-atom clashscore is defined as the number of clashes found per 1000 atoms (including hydrogen atoms). The all-atom clashscore for this structure is 35.

All (1027) close contacts within the same asymmetric unit are listed below, sorted by their clash magnitude.

Atom-1	Atom-2	Interatomic distance (Å)	Clash overlap (Å)
1:B:731:GLU:HG3	1:B:732:ILE:H	1.03	1.19
1:B:428:ASN:O	1:B:430:LYS:N	1.77	1.17
1:C:577:HIS:O	1:C:578:GLY:O	1.60	1.16
1:B:427:ASP:OD1	1:B:427:ASP:O	1.72	1.08
1:B:726:ILE:HA	1:B:729:TYR:HB2	1.39	1.05
1:C:427:ASP:O	1:C:427:ASP:OD1	1.76	1.04
1:A:428:ASN:O	1:A:430:LYS:N	1.90	1.03
1:B:295:VAL:HG21	1:B:603:ILE:HG22	1.39	1.03
1:B:657:ILE:CD1	1:B:658:PRO:HD2	1.90	1.02
1:B:658:PRO:O	1:B:661:ALA:HB2	1.58	1.02
1:A:295:VAL:HG21	1:A:603:ILE:HG22	1.42	1.01
1:C:295:VAL:HG21	1:C:603:ILE:HG22	1.40	1.00
1:C:346:LYS:HE2	5:C:3999:EMA:O2G	1.60	0.99
1:B:629:ASN:ND2	1:B:631:SER:H	1.60	0.98
1:C:629:ASN:ND2	1:C:631:SER:H	1.60	0.98
1:A:629:ASN:ND2	1:A:631:SER:H	1.62	0.97
1:B:633:ASN:HD21	1:B:645:TRP:H	1.11	0.97
1:A:629:ASN:HD22	1:A:631:SER:H	1.11	0.95
1:C:633:ASN:HD21	1:C:645:TRP:H	1.12	0.95
1:B:657:ILE:HG13	1:B:658:PRO:HD2	1.48	0.95
1:B:561:ASN:O	1:B:564:VAL:HG22	1.67	0.95
1:B:639:ASN:H	1:B:639:ASN:HD22	1.10	0.94
1:B:629:ASN:HD22	1:B:631:SER:H	1.09	0.94
1:B:295:VAL:CG2	1:B:603:ILE:HG22	1.96	0.93
1:B:657:ILE:CG1	1:B:658:PRO:HD2	1.98	0.93
1:C:629:ASN:HD22	1:C:631:SER:H	1.11	0.93
1:C:639:ASN:HD22	1:C:639:ASN:H	1.08	0.93
1:C:295:VAL:CG2	1:C:603:ILE:HG22	1.98	0.92
1:A:633:ASN:HD21	1:A:645:TRP:H	1.16	0.91
1:C:775:LEU:HD23	1:C:775:LEU:H	1.35	0.91
1:B:731:GLU:HG3	1:B:732:ILE:N	1.86	0.90
1:A:427:ASP:O	1:A:427:ASP:OD1	1.89	0.90
1:A:521:ASN:ND2	1:A:522:SER:H	1.70	0.89
1:A:639:ASN:H	1:A:639:ASN:HD22	1.16	0.89
1:A:295:VAL:CG2	1:A:603:ILE:HG22	2.02	0.89
1:A:445:ARG:HH22	1:A:456:LYS:HG2	1.36	0.89
1:A:775:LEU:HD23	1:A:775:LEU:H	1.38	0.89

*Continued on next page...*

*Continued from previous page...*

Atom-1	Atom-2	Interatomic distance (Å)	Clash overlap (Å)
1:A:427:ASP:O	6:A:5:HOH:O	1.91	0.88
1:C:385:LEU:HD11	1:C:389:LYS:HE3	1.55	0.88
1:B:731:GLU:CG	1:B:732:ILE:H	1.78	0.88
1:C:577:HIS:C	1:C:578:GLY:O	2.12	0.87
1:A:385:LEU:HD11	1:A:389:LYS:HE3	1.55	0.87
1:C:514:ASP:HA	1:C:517:VAL:HG12	1.57	0.86
1:A:739:LYS:HG3	1:A:740:GLN:O	1.74	0.86
1:C:659:THR:HG22	1:C:661:ALA:H	1.37	0.86
1:A:521:ASN:HD22	1:A:522:SER:H	1.17	0.86
1:B:735:VAL:HG22	1:B:738:SER:HB2	1.57	0.85
1:C:346:LYS:CE	5:C:3999:EMA:O2G	2.25	0.85
1:B:385:LEU:HD11	1:B:389:LYS:HE3	1.58	0.83
1:C:577:HIS:CE1	5:C:3999:EMA:C8	2.62	0.81
1:C:633:ASN:HD21	1:C:645:TRP:N	1.78	0.81
1:A:523:LEU:HD13	2:D:127:GLU:HB3	1.61	0.81
1:B:633:ASN:HD21	1:B:645:TRP:N	1.77	0.81
1:A:324:THR:HG21	1:A:556:MET:HE1	1.62	0.81
1:C:400:LYS:HE2	1:C:475:GLU:OE2	1.80	0.80
1:A:617:LYS:HG2	1:A:618:ASN:ND2	1.95	0.80
2:F:65:PHE:HB2	2:F:66:PRO:HD3	1.65	0.79
1:B:618:ASN:N	1:B:618:ASN:HD22	1.79	0.79
2:D:133:ASP:OD2	2:D:135:GLN:HG3	1.83	0.79
1:A:540:ARG:NH2	2:D:87:GLU:OE1	2.15	0.79
1:B:761:GLN:HA	1:B:764:LEU:HD12	1.65	0.79
1:B:400:LYS:HE2	1:B:475:GLU:OE2	1.82	0.79
2:F:133:ASP:OD2	2:F:135:GLN:HG3	1.83	0.78
1:B:323:ASN:OD1	1:B:500:SER:HB3	1.84	0.78
1:C:792:VAL:HG12	1:C:796:ILE:HD11	1.65	0.78
1:A:633:ASN:HD21	1:A:645:TRP:N	1.82	0.78
1:A:618:ASN:HD22	1:A:618:ASN:N	1.79	0.78
1:C:690:LYS:NZ	1:C:692:GLU:HA	1.99	0.78
1:A:787:THR:O	1:A:787:THR:HG22	1.82	0.78
2:E:65:PHE:HB2	2:E:66:PRO:HD3	1.65	0.78
1:C:581:GLN:HE21	1:C:628:PHE:HA	1.49	0.77
1:B:524:GLU:HB3	1:B:527:LYS:HG2	1.65	0.77
2:D:65:PHE:HB2	2:D:66:PRO:HD3	1.65	0.77
1:B:564:VAL:O	1:B:567:THR:HG23	1.84	0.77
1:B:745:TYR:HB3	1:B:749:PHE:HE1	1.49	0.77
1:B:518:ASN:C	1:B:520:PRO:HD3	2.04	0.77
2:E:133:ASP:OD2	2:E:135:GLN:HG3	1.84	0.77
1:B:427:ASP:OD1	1:B:427:ASP:C	2.22	0.76

*Continued on next page...*

*Continued from previous page...*

Atom-1	Atom-2	Interatomic distance (Å)	Clash overlap (Å)
1:C:618:ASN:N	1:C:618:ASN:HD22	1.82	0.76
1:A:781:ASN:ND2	1:A:782:PHE:H	1.84	0.76
1:C:633:ASN:N	1:C:633:ASN:HD22	1.83	0.76
1:B:659:THR:C	1:B:661:ALA:N	2.29	0.76
1:A:400:LYS:HE2	1:A:475:GLU:OE2	1.86	0.76
1:C:617:LYS:HG2	1:C:618:ASN:ND2	2.00	0.76
1:A:792:VAL:HG12	1:A:796:ILE:HD11	1.66	0.76
1:B:629:ASN:ND2	1:B:631:SER:HB2	2.00	0.75
1:C:540:ARG:HD3	1:C:627:TYR:OH	1.86	0.75
1:A:581:GLN:HE21	1:A:628:PHE:HA	1.51	0.75
1:B:629:ASN:HD22	1:B:631:SER:N	1.84	0.75
1:B:722:ILE:O	1:B:726:ILE:HG13	1.85	0.75
1:C:629:ASN:ND2	1:C:631:SER:HB2	2.02	0.75
2:E:12:PHE:HD1	2:E:39:LEU:HD21	1.52	0.75
1:B:657:ILE:HG13	1:B:658:PRO:CD	2.17	0.74
1:B:639:ASN:HD22	1:B:639:ASN:N	1.84	0.74
1:B:537:GLY:O	1:B:625:LEU:HD21	1.88	0.74
1:C:781:ASN:ND2	1:C:782:PHE:H	1.85	0.74
1:B:617:LYS:HG2	1:B:618:ASN:ND2	2.02	0.74
1:C:427:ASP:C	1:C:427:ASP:OD1	2.25	0.74
1:B:581:GLN:HE21	1:B:628:PHE:HA	1.53	0.74
1:B:633:ASN:HD22	1:B:633:ASN:N	1.86	0.74
2:F:12:PHE:HD1	2:F:39:LEU:HD21	1.52	0.74
1:B:718:ARG:HB2	1:B:763:LEU:HB3	1.69	0.73
1:A:633:ASN:HD22	1:A:633:ASN:N	1.81	0.73
1:A:318:ILE:H	1:A:318:ILE:HD12	1.52	0.73
1:C:629:ASN:HD22	1:C:631:SER:N	1.84	0.73
1:B:657:ILE:HD12	1:B:658:PRO:HD2	1.69	0.73
1:C:781:ASN:HD22	1:C:782:PHE:H	1.35	0.73
1:A:781:ASN:HD22	1:A:782:PHE:H	1.34	0.73
1:A:629:ASN:HD22	1:A:631:SER:N	1.86	0.73
1:B:737:LYS:C	1:B:738:SER:O	2.23	0.72
1:C:692:GLU:O	1:C:735:VAL:HG22	1.88	0.72
1:A:318:ILE:N	1:A:318:ILE:HD12	2.03	0.72
1:C:318:ILE:N	1:C:318:ILE:HD12	2.04	0.72
1:C:577:HIS:O	1:C:578:GLY:C	2.24	0.72
1:B:516:VAL:HA	1:B:520:PRO:HG2	1.72	0.72
2:D:12:PHE:HD1	2:D:39:LEU:HD21	1.52	0.72
1:B:657:ILE:HD12	1:B:658:PRO:CD	2.20	0.72
1:C:320:ARG:HD2	1:C:599:GLU:O	1.88	0.72
1:B:629:ASN:HD21	1:B:631:SER:HB2	1.54	0.71

*Continued on next page...*

*Continued from previous page...*

Atom-1	Atom-2	Interatomic distance (Å)	Clash overlap (Å)
1:A:513:TRP:HD1	1:A:532:LEU:HD12	1.54	0.71
1:A:445:ARG:HG3	1:A:471:TRP:CH2	2.24	0.71
1:B:789:ASN:HD22	1:B:792:VAL:HB	1.55	0.71
1:C:659:THR:HB	1:C:662:GLU:HB3	1.72	0.71
1:B:714:GLN:OE1	1:B:715:GLU:HG3	1.90	0.71
1:A:639:ASN:HD22	1:A:639:ASN:N	1.89	0.71
1:A:521:ASN:ND2	1:A:522:SER:N	2.38	0.71
1:A:695:LYS:HB2	2:D:18:LEU:HD22	1.72	0.71
1:B:757:THR:HG23	1:B:773:PHE:HB3	1.73	0.71
1:A:438:ASN:HD22	1:A:438:ASN:C	1.93	0.70
1:B:524:GLU:CB	1:B:527:LYS:HG2	2.20	0.70
1:A:735:VAL:O	1:A:738:SER:HB2	1.90	0.70
1:B:318:ILE:N	1:B:318:ILE:HD12	2.06	0.70
1:C:318:ILE:HD12	1:C:318:ILE:H	1.54	0.70
1:B:648:PRO:HA	1:B:651:LYS:HB2	1.73	0.70
1:A:521:ASN:HD22	1:A:522:SER:N	1.87	0.70
1:A:629:ASN:ND2	1:A:631:SER:HB2	2.07	0.70
1:C:690:LYS:HZ3	1:C:693:SER:H	1.39	0.70
1:C:792:VAL:O	1:C:796:ILE:HG12	1.91	0.70
1:C:690:LYS:HZ2	1:C:692:GLU:HA	1.57	0.69
1:C:438:ASN:C	1:C:438:ASN:HD22	1.95	0.69
1:B:726:ILE:CA	1:B:729:TYR:HB2	2.19	0.69
1:B:784:GLU:OE1	1:B:788:ASP:HB3	1.91	0.69
1:B:519:THR:N	1:B:520:PRO:HD3	2.08	0.69
1:A:493:ASP:OD1	6:A:7:HOH:O	2.10	0.69
1:A:428:ASN:O	1:A:429:GLY:C	2.31	0.69
1:A:445:ARG:CZ	1:A:471:TRP:NE1	2.55	0.69
1:A:324:THR:HG21	1:A:556:MET:CE	2.22	0.69
1:B:318:ILE:H	1:B:318:ILE:HD12	1.56	0.69
1:B:616:GLU:HA	1:B:620:THR:CG2	2.23	0.69
1:C:368:GLN:HB2	1:C:384:ASN:OD1	1.92	0.69
1:A:666:ASN:O	1:A:670:ILE:HB	1.93	0.69
1:A:695:LYS:HD2	2:D:19:PHE:HB2	1.73	0.69
1:A:696:LYS:HD3	1:A:731:GLU:OE1	1.93	0.69
1:A:540:ARG:HD3	1:A:627:TYR:OH	1.92	0.69
1:A:577:HIS:O	1:A:578:GLY:O	2.10	0.68
1:C:617:LYS:C	1:C:618:ASN:HD22	1.97	0.68
1:B:329:ARG:HD2	1:B:590:ASP:OD2	1.92	0.68
1:B:508:ILE:HG22	1:B:509:PRO:HD2	1.75	0.68
1:B:717:LYS:HA	1:B:720:ILE:HG12	1.75	0.68
1:B:720:ILE:HG13	1:B:721:SER:N	2.08	0.68

*Continued on next page...*



*Continued from previous page...*

Atom-1	Atom-2	Interatomic distance (Å)	Clash overlap (Å)
1:C:329:ARG:HD2	1:C:590:ASP:OD2	1.93	0.68
1:C:540:ARG:NH2	1:C:630:ARG:HH21	1.91	0.68
1:B:438:ASN:HD22	1:B:438:ASN:C	1.97	0.68
1:B:654:ILE:O	1:B:655:ASN:ND2	2.26	0.68
1:A:427:ASP:OD1	1:A:427:ASP:C	2.30	0.68
1:B:538:ILE:O	1:B:540:ARG:HD3	1.94	0.68
1:A:617:LYS:C	1:A:618:ASN:HD22	1.96	0.68
1:A:792:VAL:O	1:A:796:ILE:HG12	1.93	0.68
1:B:308:VAL:HB	1:B:311:HIS:ND1	2.09	0.68
1:C:659:THR:HG22	1:C:661:ALA:N	2.08	0.68
1:B:320:ARG:HD2	1:B:599:GLU:O	1.93	0.68
1:A:513:TRP:O	1:A:517:VAL:HG23	1.94	0.68
1:C:639:ASN:N	1:C:639:ASN:HD22	1.84	0.67
1:C:327:LEU:N	1:C:327:LEU:HD12	2.10	0.67
1:B:720:ILE:HD12	1:B:724:ARG:NH2	2.10	0.67
1:C:747:ASN:O	1:C:750:GLN:HG2	1.95	0.67
1:A:360:VAL:O	1:A:360:VAL:HG22	1.95	0.67
1:B:724:ARG:O	1:B:727:GLN:HB3	1.95	0.67
1:A:670:ILE:HD12	1:A:745:TYR:CE1	2.30	0.67
1:C:777:TYR:CD1	1:C:780:LEU:HD21	2.30	0.67
1:B:360:VAL:HG22	1:B:360:VAL:O	1.95	0.67
1:C:616:GLU:HA	1:C:620:THR:CG2	2.24	0.66
1:C:400:LYS:HE2	1:C:475:GLU:CD	2.15	0.66
1:C:558:ASP:O	1:C:562:GLU:HG3	1.96	0.66
1:A:616:GLU:HA	1:A:620:THR:CG2	2.25	0.66
1:C:519:THR:OG1	1:C:520:PRO:HD2	1.95	0.66
1:A:323:ASN:HD22	1:A:598:PRO:HB2	1.61	0.66
1:B:428:ASN:O	1:B:429:GLY:C	2.28	0.66
1:A:777:TYR:CD1	1:A:780:LEU:HD21	2.31	0.66
1:B:540:ARG:HD2	1:B:627:TYR:CZ	2.31	0.66
1:B:605:THR:HG21	1:B:611:THR:HA	1.78	0.65
1:C:605:THR:HG21	1:C:611:THR:HA	1.77	0.65
1:B:327:LEU:N	1:B:327:LEU:HD12	2.11	0.65
1:B:735:VAL:CG2	1:B:738:SER:HB2	2.27	0.65
1:C:360:VAL:HG22	1:C:360:VAL:O	1.97	0.65
1:A:385:LEU:CD1	1:A:389:LYS:HE3	2.27	0.65
1:B:368:GLN:HB2	1:B:384:ASN:OD1	1.97	0.65
1:A:540:ARG:NH2	1:A:630:ARG:HH21	1.94	0.64
2:F:5:THR:OG1	2:F:8:GLN:HG2	1.97	0.64
1:C:308:VAL:HB	1:C:311:HIS:ND1	2.12	0.64
1:B:346:LYS:HE2	5:B:2999:EMA:O2G	1.97	0.64

*Continued on next page...*

*Continued from previous page...*

Atom-1	Atom-2	Interatomic distance (Å)	Clash overlap (Å)
1:B:657:ILE:HD13	1:B:705:TYR:HD1	1.61	0.64
2:F:106:ARG:O	2:F:110:THR:HG23	1.96	0.64
1:B:617:LYS:C	1:B:618:ASN:HD22	2.01	0.64
1:C:629:ASN:HD21	1:C:631:SER:HB2	1.61	0.64
1:C:510:GLN:O	1:C:514:ASP:OD2	2.16	0.64
1:A:605:THR:HG21	1:A:611:THR:HA	1.79	0.64
1:B:654:ILE:HA	1:B:755:ARG:HD3	1.80	0.64
1:A:445:ARG:HG3	1:A:471:TRP:CZ2	2.32	0.64
1:A:308:VAL:HB	1:A:311:HIS:ND1	2.13	0.64
1:B:346:LYS:HE3	5:B:2999:EMA:O1A	1.98	0.63
1:C:658:PRO:HG3	1:C:752:LEU:HD22	1.80	0.63
2:E:117:THR:OG1	2:E:120:GLU:HG3	1.98	0.63
1:A:577:HIS:C	1:A:578:GLY:O	2.37	0.63
1:A:368:GLN:HB2	1:A:384:ASN:OD1	1.99	0.62
2:D:36:MET:O	2:D:41:GLN:HB2	1.99	0.62
1:B:385:LEU:CD1	1:B:389:LYS:HE3	2.29	0.62
2:E:12:PHE:CD1	2:E:39:LEU:HD21	2.34	0.62
1:B:789:ASN:ND2	1:B:792:VAL:HB	2.14	0.62
1:C:428:ASN:O	1:C:430:LYS:N	2.31	0.62
2:E:36:MET:O	2:E:41:GLN:HB2	1.98	0.62
2:F:12:PHE:CD1	2:F:39:LEU:HD21	2.35	0.62
1:A:747:ASN:O	1:A:750:GLN:HG2	1.99	0.62
1:B:720:ILE:O	1:B:723:PHE:HB3	2.00	0.62
2:E:106:ARG:O	2:E:110:THR:HG23	2.00	0.62
1:B:372:LYS:HG3	1:B:373:LYS:HD3	1.81	0.62
1:B:655:ASN:O	1:B:755:ARG:NH1	2.33	0.62
2:D:117:THR:OG1	2:D:120:GLU:HG3	1.99	0.62
1:A:505:LYS:HD3	2:D:112:LEU:O	1.98	0.62
1:B:731:GLU:HG3	1:B:733:GLU:H	1.63	0.61
1:B:706:ASN:O	1:B:709:ASN:HB2	1.99	0.61
1:B:589:LYS:HB2	1:B:643:ILE:HG12	1.82	0.61
1:B:722:ILE:HG22	1:B:726:ILE:HD11	1.82	0.61
1:B:657:ILE:CD1	1:B:658:PRO:CD	2.70	0.61
2:E:92:PHE:CD2	2:E:108:VAL:HG21	2.35	0.61
1:A:786:GLU:O	1:A:788:ASP:N	2.31	0.61
1:C:659:THR:H	1:C:662:GLU:HB3	1.64	0.61
2:F:26:THR:HA	2:F:63:ILE:O	2.01	0.61
1:A:327:LEU:HD12	1:A:327:LEU:N	2.15	0.61
2:F:36:MET:O	2:F:41:GLN:HB2	2.01	0.61
2:E:26:THR:HA	2:E:63:ILE:O	2.01	0.61
1:C:663:PHE:O	1:C:667:LEU:HG	2.00	0.61

*Continued on next page...*

*Continued from previous page...*

Atom-1	Atom-2	Interatomic distance (Å)	Clash overlap (Å)
1:A:617:LYS:HG2	1:A:618:ASN:HD21	1.66	0.61
1:C:781:ASN:ND2	1:C:782:PHE:N	2.49	0.61
1:C:629:ASN:ND2	1:C:631:SER:N	2.42	0.61
1:A:629:ASN:HD21	1:A:631:SER:HB2	1.65	0.61
1:B:346:LYS:CE	5:B:2999:EMA:O1A	2.49	0.61
1:A:534:ILE:HA	1:A:538:ILE:HB	1.83	0.60
1:A:722:ILE:HD13	1:A:764:LEU:CD2	2.31	0.60
1:B:659:THR:O	1:B:660:SER:C	2.33	0.60
1:C:324:THR:HG21	1:C:556:MET:HE1	1.82	0.60
1:C:789:ASN:HD22	1:C:789:ASN:N	1.99	0.60
1:A:781:ASN:ND2	1:A:782:PHE:N	2.49	0.60
2:D:26:THR:HA	2:D:63:ILE:O	2.01	0.60
2:F:117:THR:OG1	2:F:120:GLU:HG3	2.00	0.60
1:B:323:ASN:OD1	1:B:500:SER:CB	2.48	0.60
1:B:516:VAL:CA	1:B:520:PRO:HG2	2.31	0.60
1:C:540:ARG:NH2	1:C:630:ARG:NH2	2.49	0.60
1:B:776:LEU:HD22	1:B:779:GLN:HG3	1.84	0.60
1:B:345:THR:HB	1:B:491:ASP:HB3	1.84	0.60
1:B:633:ASN:ND2	1:B:644:GLU:HA	2.17	0.60
1:B:639:ASN:H	1:B:639:ASN:ND2	1.91	0.60
1:B:718:ARG:O	1:B:722:ILE:HG13	2.02	0.60
1:C:372:LYS:HG3	1:C:373:LYS:HD3	1.84	0.60
1:C:695:LYS:HD2	2:F:19:PHE:HB2	1.84	0.60
1:A:400:LYS:HE2	1:A:475:GLU:CD	2.21	0.59
1:C:455:TYR:HA	1:C:471:TRP:HZ3	1.66	0.59
1:A:789:ASN:N	1:A:789:ASN:HD22	1.99	0.59
1:B:731:GLU:HG3	1:B:733:GLU:N	2.17	0.59
1:B:776:LEU:HD13	1:B:779:GLN:OE1	2.03	0.59
1:A:558:ASP:O	1:A:562:GLU:HG3	2.02	0.59
1:C:324:THR:OG1	1:C:499:PRO:HA	2.03	0.59
1:C:469:PHE:CB	1:C:472:ARG:HH21	2.16	0.59
1:B:509:PRO:HD3	1:B:536:TYR:HE1	1.68	0.59
1:C:657:ILE:HG13	1:C:759:GLN:HG2	1.84	0.59
2:F:92:PHE:CD2	2:F:108:VAL:HG21	2.37	0.59
1:C:665:LYS:HE3	2:F:11:GLU:OE2	2.02	0.59
1:B:400:LYS:HE2	1:B:475:GLU:CD	2.23	0.59
1:C:773:PHE:N	1:C:775:LEU:HD21	2.18	0.59
1:B:538:ILE:HD11	1:B:625:LEU:HD11	1.84	0.59
1:A:469:PHE:CB	1:A:472:ARG:HH21	2.15	0.59
1:B:657:ILE:HD13	1:B:705:TYR:CD1	2.38	0.59
1:B:556:MET:CE	1:B:560:LEU:HG	2.33	0.59

*Continued on next page...*

*Continued from previous page...*

Atom-1	Atom-2	Interatomic distance (Å)	Clash overlap (Å)
1:B:745:TYR:O	1:B:749:PHE:HD1	1.85	0.59
1:C:296:LEU:CD2	1:C:606:LYS:HE3	2.33	0.59
1:A:540:ARG:HD3	1:A:627:TYR:CZ	2.38	0.58
1:C:722:ILE:HD13	1:C:764:LEU:CD2	2.32	0.58
1:B:733:GLU:C	1:B:735:VAL:H	2.06	0.58
1:B:318:ILE:HG23	1:B:322:LEU:HD12	1.84	0.58
1:A:372:LYS:HG3	1:A:373:LYS:HD3	1.83	0.58
1:C:324:THR:HG21	1:C:556:MET:CE	2.33	0.58
2:D:106:ARG:O	2:D:110:THR:HG23	2.02	0.58
2:D:12:PHE:CD1	2:D:39:LEU:HD21	2.35	0.58
1:A:773:PHE:N	1:A:775:LEU:HD21	2.18	0.58
1:C:540:ARG:HD3	1:C:627:TYR:CZ	2.39	0.58
1:A:318:ILE:HG23	1:A:322:LEU:HD12	1.84	0.58
1:C:385:LEU:CD1	1:C:389:LYS:HE3	2.29	0.58
2:D:83:GLU:O	2:D:87:GLU:HG3	2.03	0.58
1:C:346:LYS:HZ1	5:C:3999:EMA:PG	2.26	0.58
1:B:752:LEU:CD2	1:B:756:ILE:HD11	2.33	0.58
1:B:305:SER:HB3	1:B:594:PHE:CD1	2.39	0.58
2:D:137:ASN:OD1	2:D:139:GLU:HB2	2.04	0.58
1:A:740:GLN:H	1:A:740:GLN:CD	2.07	0.58
1:B:773:PHE:O	1:B:775:LEU:N	2.34	0.58
1:C:718:ARG:O	1:C:722:ILE:HG13	2.04	0.58
1:C:318:ILE:HG23	1:C:322:LEU:HD12	1.85	0.58
1:C:529:VAL:CG1	2:F:112:LEU:HD13	2.34	0.57
1:A:597:ASN:HB2	1:A:598:PRO:HD2	1.86	0.57
1:C:509:PRO:HD2	1:C:536:TYR:CE2	2.40	0.57
1:B:657:ILE:CG1	1:B:658:PRO:CD	2.76	0.57
1:A:633:ASN:ND2	1:A:644:GLU:HA	2.20	0.57
1:A:667:LEU:O	1:A:670:ILE:HG22	2.05	0.57
2:D:79:THR:C	2:D:81:SER:H	2.08	0.57
1:B:655:ASN:O	1:B:755:ARG:HD2	2.05	0.57
1:A:589:LYS:HB2	1:A:643:ILE:HG12	1.87	0.57
1:B:744:GLU:OE1	1:C:397:GLU:OE1	2.22	0.57
1:B:709:ASN:OD1	1:B:717:LYS:HG2	2.04	0.57
1:B:514:ASP:HA	1:B:517:VAL:HG12	1.87	0.57
1:C:540:ARG:HD2	1:C:582:ASP:OD1	2.03	0.57
1:B:629:ASN:ND2	1:B:631:SER:N	2.41	0.57
1:A:323:ASN:HD22	1:A:598:PRO:CB	2.17	0.57
1:A:747:ASN:HA	1:A:750:GLN:HG2	1.87	0.57
1:B:514:ASP:O	1:B:516:VAL:N	2.38	0.57
1:A:722:ILE:HD13	1:A:764:LEU:HD23	1.86	0.56

*Continued on next page...*

*Continued from previous page...*

Atom-1	Atom-2	Interatomic distance (Å)	Clash overlap (Å)
1:C:318:ILE:CD1	1:C:318:ILE:H	2.18	0.56
1:B:530:THR:HG22	2:E:92:PHE:CZ	2.41	0.56
1:B:794:GLN:NE2	1:B:797:ILE:HG21	2.20	0.56
1:C:697:ILE:HD13	1:C:732:ILE:HG12	1.87	0.56
1:C:549:LEU:H	1:C:549:LEU:HD12	1.69	0.56
1:A:639:ASN:H	1:A:639:ASN:ND2	1.96	0.56
1:A:697:ILE:HD11	1:A:731:GLU:O	2.05	0.56
2:E:137:ASN:OD1	2:E:139:GLU:HB2	2.05	0.56
1:B:731:GLU:CG	1:B:732:ILE:N	2.47	0.56
1:C:320:ARG:HG3	1:C:598:PRO:O	2.04	0.56
1:A:329:ARG:HD2	1:A:590:ASP:OD2	2.06	0.56
1:B:295:VAL:HG22	1:B:603:ILE:HG22	1.85	0.56
2:F:63:ILE:N	2:F:63:ILE:HD12	2.20	0.56
2:D:63:ILE:N	2:D:63:ILE:HD12	2.21	0.56
2:E:79:THR:C	2:E:81:SER:H	2.09	0.56
2:F:79:THR:C	2:F:81:SER:H	2.09	0.56
1:A:629:ASN:ND2	1:A:631:SER:N	2.44	0.56
1:A:633:ASN:ND2	1:A:633:ASN:N	2.52	0.56
1:C:662:GLU:HG2	1:C:662:GLU:O	2.04	0.56
1:C:747:ASN:HA	1:C:750:GLN:HG2	1.86	0.56
1:A:739:LYS:CG	1:A:740:GLN:O	2.51	0.56
1:A:697:ILE:N	1:A:697:ILE:HD12	2.21	0.56
1:A:718:ARG:O	1:A:722:ILE:HG13	2.04	0.56
1:A:456:LYS:HD3	1:A:471:TRP:CD1	2.41	0.56
1:B:500:SER:HA	1:B:624:TYR:CD2	2.40	0.56
1:A:781:ASN:HD22	1:A:782:PHE:N	2.04	0.56
1:B:616:GLU:HA	1:B:620:THR:HG22	1.88	0.56
1:B:748:TYR:CZ	1:B:752:LEU:HD12	2.41	0.56
2:D:92:PHE:CD2	2:D:108:VAL:HG21	2.41	0.56
1:B:323:ASN:HD22	1:B:598:PRO:HB2	1.70	0.55
2:E:63:ILE:N	2:E:63:ILE:HD12	2.21	0.55
1:A:759:GLN:HA	1:A:759:GLN:HE21	1.72	0.55
2:D:105:LEU:HD23	2:D:105:LEU:O	2.06	0.55
1:B:505:LYS:O	1:B:508:ILE:HG13	2.07	0.55
1:B:538:ILE:HD12	1:B:538:ILE:N	2.21	0.55
1:C:650:THR:C	1:C:652:ALA:H	2.09	0.55
1:B:307:LEU:HD12	1:B:307:LEU:H	1.71	0.55
1:C:514:ASP:C	1:C:516:VAL:H	2.09	0.55
1:A:540:ARG:NH2	1:A:630:ARG:NH2	2.55	0.55
1:C:722:ILE:HD13	1:C:764:LEU:HD23	1.88	0.55
2:E:95:ASP:OD2	2:E:97:ASN:HB3	2.06	0.55

*Continued on next page...*

*Continued from previous page...*

Atom-1	Atom-2	Interatomic distance (Å)	Clash overlap (Å)
2:E:5:THR:HG23	2:E:8:GLN:HG3	1.88	0.55
1:A:783:THR:O	1:A:784:GLU:OE1	2.23	0.55
1:B:731:GLU:CG	1:B:733:GLU:H	2.19	0.55
1:B:597:ASN:HB2	1:B:598:PRO:HD2	1.89	0.55
2:E:92:PHE:CE2	2:E:108:VAL:HG11	2.41	0.55
1:A:759:GLN:HA	1:A:759:GLN:NE2	2.21	0.55
1:B:716:LYS:O	1:B:720:ILE:HG23	2.06	0.55
1:A:445:ARG:CZ	1:A:471:TRP:CD1	2.90	0.55
2:D:44:THR:HG22	2:D:47:GLU:OE1	2.07	0.55
1:B:659:THR:C	1:B:661:ALA:H	2.05	0.54
1:C:759:GLN:HA	1:C:759:GLN:NE2	2.22	0.54
1:A:318:ILE:H	1:A:318:ILE:CD1	2.17	0.54
1:C:597:ASN:HB2	1:C:598:PRO:HD2	1.89	0.54
1:A:729:TYR:HB2	1:A:756:ILE:HG21	1.89	0.54
1:C:295:VAL:HG22	1:C:603:ILE:HG22	1.87	0.54
1:A:630:ARG:CZ	2:D:83:GLU:HB3	2.37	0.54
1:C:617:LYS:HG2	1:C:618:ASN:HD21	1.72	0.54
2:F:8:GLN:HA	2:F:8:GLN:HE21	1.73	0.54
2:F:137:ASN:OD1	2:F:139:GLU:HB2	2.06	0.54
1:A:607:ASN:HD21	1:A:609:GLU:HB2	1.72	0.54
1:A:470:ASN:CG	1:A:471:TRP:H	2.11	0.54
1:C:320:ARG:CD	1:C:599:GLU:O	2.56	0.54
1:C:323:ASN:HD22	1:C:598:PRO:HB2	1.73	0.54
1:C:520:PRO:HG2	1:C:521:ASN:H	1.72	0.54
1:C:589:LYS:HB2	1:C:643:ILE:HG12	1.89	0.54
1:C:618:ASN:N	1:C:618:ASN:ND2	2.54	0.54
1:B:516:VAL:O	1:B:520:PRO:HD2	2.07	0.54
1:A:695:LYS:CB	2:D:18:LEU:HD22	2.36	0.54
1:A:549:LEU:HD12	1:A:549:LEU:H	1.72	0.54
1:A:714:GLN:NE2	2:D:126:ARG:HG3	2.23	0.54
1:A:445:ARG:HH22	1:A:456:LYS:CG	2.15	0.54
1:A:616:GLU:HA	1:A:620:THR:HG22	1.90	0.54
1:B:530:THR:O	1:B:533:LEU:HB3	2.07	0.54
1:C:428:ASN:O	1:C:429:GLY:C	2.46	0.54
1:A:739:LYS:C	1:A:740:GLN:O	2.37	0.54
1:C:296:LEU:HD21	1:C:606:LYS:HE3	1.88	0.54
1:C:718:ARG:HD2	1:C:767:GLN:OE1	2.07	0.54
1:A:294:ASP:O	1:A:610:MET:HE1	2.08	0.54
2:F:105:LEU:O	2:F:105:LEU:HD23	2.07	0.54
1:C:759:GLN:HA	1:C:759:GLN:HE21	1.74	0.54
2:D:8:GLN:HA	2:D:8:GLN:HE21	1.73	0.54

*Continued on next page...*

*Continued from previous page...*

Atom-1	Atom-2	Interatomic distance (Å)	Clash overlap (Å)
1:B:776:LEU:HD13	1:B:779:GLN:CD	2.28	0.53
1:B:663:PHE:CB	2:E:14:GLU:OE2	2.56	0.53
1:C:534:ILE:HA	1:C:538:ILE:HB	1.90	0.53
1:B:618:ASN:N	1:B:618:ASN:ND2	2.51	0.53
1:A:697:ILE:CD1	1:A:731:GLU:HB3	2.38	0.53
1:A:549:LEU:HB3	1:A:578:GLY:HA2	1.91	0.53
1:C:695:LYS:HZ2	2:F:18:LEU:HD13	1.72	0.53
2:E:97:ASN:HD21	2:E:99:TYR:HB2	1.73	0.53
1:A:504:ILE:HD12	1:A:537:GLY:HA2	1.89	0.53
1:B:658:PRO:O	1:B:661:ALA:CB	2.47	0.53
1:C:581:GLN:NE2	1:C:628:PHE:HA	2.20	0.53
1:B:318:ILE:CD1	1:B:318:ILE:H	2.20	0.53
1:B:509:PRO:HG2	1:B:512:GLU:HB3	1.91	0.53
2:E:8:GLN:HA	2:E:8:GLN:HE21	1.73	0.53
2:F:44:THR:HG22	2:F:47:GLU:OE1	2.07	0.53
1:C:616:GLU:HA	1:C:620:THR:HG22	1.89	0.53
2:E:105:LEU:HD23	2:E:105:LEU:O	2.08	0.53
1:A:581:GLN:NE2	1:A:628:PHE:HA	2.22	0.53
1:B:536:TYR:CD2	1:B:536:TYR:N	2.77	0.53
1:B:633:ASN:ND2	1:B:645:TRP:H	1.95	0.53
1:B:715:GLU:O	1:B:718:ARG:HG2	2.08	0.53
2:F:52:ILE:O	2:F:56:ASP:HB3	2.08	0.53
1:C:697:ILE:HD11	1:C:731:GLU:O	2.08	0.53
1:A:783:THR:HB	1:A:784:GLU:OE1	2.08	0.53
1:B:445:ARG:HD3	1:B:471:TRP:CZ2	2.44	0.53
1:A:298:GLY:O	1:A:301:ALA:N	2.42	0.53
1:C:305:SER:HB3	1:C:594:PHE:CD1	2.44	0.53
1:B:536:TYR:N	1:B:536:TYR:HD2	2.06	0.53
1:A:529:VAL:HG21	2:D:109:MET:SD	2.48	0.53
1:B:554:LYS:O	1:B:557:LEU:HB2	2.09	0.53
2:D:52:ILE:O	2:D:56:ASP:HB3	2.09	0.53
1:C:298:GLY:O	1:C:301:ALA:N	2.41	0.53
1:A:664:ILE:HD13	2:D:15:ALA:HB2	1.92	0.52
1:C:522:SER:O	1:C:525:LYS:HB3	2.08	0.52
2:E:44:THR:HG22	2:E:47:GLU:OE1	2.07	0.52
1:B:540:ARG:CZ	1:B:627:TYR:CE1	2.92	0.52
1:B:327:LEU:HG	1:B:595:ILE:HG23	1.91	0.52
1:C:729:TYR:HB2	1:C:756:ILE:HG21	1.91	0.52
2:F:52:ILE:O	2:F:52:ILE:HG13	2.10	0.52
2:E:9:ILE:HG23	2:E:69:LEU:HD22	1.91	0.52
1:C:607:ASN:HD21	1:C:609:GLU:HB2	1.73	0.52

*Continued on next page...*

*Continued from previous page...*

Atom-1	Atom-2	Interatomic distance (Å)	Clash overlap (Å)
1:B:550:SER:H	1:B:553:GLN:HE21	1.56	0.52
1:B:633:ASN:ND2	1:B:633:ASN:N	2.56	0.52
1:B:502:THR:O	1:B:505:LYS:HB3	2.10	0.52
1:B:556:MET:HE2	1:B:560:LEU:HG	1.90	0.52
1:A:668:SER:C	1:A:670:ILE:H	2.12	0.52
1:B:723:PHE:HB2	1:B:793:PHE:CE2	2.45	0.52
1:C:639:ASN:ND2	1:C:639:ASN:H	1.90	0.52
1:A:577:HIS:ND1	1:A:578:GLY:O	2.37	0.52
1:A:700:TYR:CE1	1:A:727:GLN:HB3	2.44	0.52
1:C:346:LYS:HE3	5:C:3999:EMA:O1A	2.09	0.52
1:B:295:VAL:HG21	1:B:603:ILE:CG2	2.28	0.52
1:C:516:VAL:HG21	1:C:532:LEU:HD11	1.91	0.52
1:B:538:ILE:CD1	1:B:625:LEU:HD11	2.40	0.52
2:F:26:THR:HG21	2:F:62:THR:HB	1.92	0.52
1:C:455:TYR:HA	1:C:471:TRP:CZ3	2.45	0.52
1:B:607:ASN:HD21	1:B:609:GLU:HB2	1.73	0.52
1:C:316:LYS:HD3	1:C:600:GLY:O	2.10	0.52
1:B:617:LYS:HG2	1:B:618:ASN:HD21	1.75	0.52
1:C:657:ILE:HD12	1:C:704:TYR:CE1	2.45	0.52
2:E:26:THR:HG21	2:E:62:THR:HB	1.92	0.52
1:B:758:ASN:C	1:B:760:VAL:H	2.12	0.52
1:C:593:ILE:HG13	1:C:611:THR:HG21	1.92	0.52
2:D:5:THR:OG1	2:D:8:GLN:HG2	2.10	0.52
1:C:797:ILE:HD12	1:C:798:ASP:N	2.25	0.52
1:B:445:ARG:HD3	1:B:471:TRP:CE2	2.46	0.51
2:E:52:ILE:O	2:E:56:ASP:HB3	2.10	0.51
1:B:508:ILE:CG2	1:B:509:PRO:HD2	2.41	0.51
2:F:92:PHE:CE2	2:F:108:VAL:HG11	2.45	0.51
2:E:52:ILE:HG13	2:E:52:ILE:O	2.10	0.51
1:B:470:ASN:CG	1:B:471:TRP:H	2.14	0.51
1:B:320:ARG:CD	1:B:599:GLU:O	2.59	0.51
1:C:318:ILE:N	1:C:318:ILE:CD1	2.74	0.51
1:A:657:ILE:HG23	1:A:759:GLN:HG2	1.91	0.51
1:B:752:LEU:O	1:B:756:ILE:HG13	2.10	0.51
1:B:535:LYS:C	1:B:536:TYR:HD2	2.14	0.51
1:A:712:PHE:CD2	1:A:716:LYS:HG2	2.46	0.51
1:B:750:GLN:O	1:B:753:LYS:HB3	2.11	0.51
2:D:52:ILE:O	2:D:52:ILE:HG13	2.11	0.51
1:B:296:LEU:CD2	1:B:606:LYS:HE3	2.40	0.51
1:B:343:VAL:O	1:B:569:TYR:OH	2.22	0.51
1:B:298:GLY:O	1:B:301:ALA:N	2.42	0.51

*Continued on next page...*



*Continued from previous page...*

Atom-1	Atom-2	Interatomic distance (Å)	Clash overlap (Å)
2:D:9:ILE:HG23	2:D:69:LEU:HD22	1.91	0.51
1:A:508:ILE:HG21	1:A:532:LEU:HD13	1.91	0.51
2:F:9:ILE:HG23	2:F:69:LEU:HD22	1.93	0.51
2:D:26:THR:HG21	2:D:62:THR:HB	1.92	0.51
1:C:659:THR:HB	1:C:662:GLU:CB	2.40	0.51
1:A:695:LYS:HB2	2:D:18:LEU:CD2	2.40	0.51
1:C:505:LYS:HD2	1:C:508:ILE:HD12	1.93	0.51
2:F:144:MET:SD	2:F:145:MET:HE2	2.51	0.51
1:B:720:ILE:HD12	1:B:724:ARG:HH21	1.76	0.51
1:A:629:ASN:HB3	1:A:632:TYR:CE2	2.46	0.51
1:A:513:TRP:HD1	1:A:532:LEU:CD1	2.23	0.51
1:B:774:LYS:HG3	1:B:774:LYS:O	2.11	0.51
1:A:587:PRO:HD2	1:A:639:ASN:HD21	1.75	0.50
1:C:697:ILE:O	1:C:701:LEU:HG	2.11	0.50
2:E:103:ALA:O	2:E:106:ARG:HB3	2.11	0.50
1:C:668:SER:HB2	2:F:14:GLU:HG3	1.92	0.50
1:A:797:ILE:HD12	1:A:798:ASP:N	2.25	0.50
1:A:469:PHE:HB3	1:A:472:ARG:HH21	1.76	0.50
1:B:653:LYS:O	1:B:653:LYS:HG3	2.10	0.50
1:B:727:GLN:HG3	1:B:786:GLU:OE1	2.11	0.50
1:C:633:ASN:ND2	1:C:644:GLU:HA	2.27	0.50
1:A:505:LYS:HD2	1:A:508:ILE:HD12	1.93	0.50
2:D:37:ARG:HA	2:D:41:GLN:O	2.11	0.50
1:C:577:HIS:CE1	5:C:3999:EMA:H8	2.44	0.50
1:A:540:ARG:NH2	2:D:87:GLU:CD	2.65	0.50
1:B:756:ILE:O	1:B:760:VAL:HG23	2.11	0.50
1:A:740:GLN:N	1:A:740:GLN:CD	2.65	0.50
1:C:296:LEU:HD21	1:C:606:LYS:CE	2.42	0.50
1:A:618:ASN:N	1:A:618:ASN:ND2	2.51	0.50
1:A:540:ARG:HH22	2:D:87:GLU:CD	2.15	0.50
2:E:5:THR:HG22	2:E:5:THR:O	2.12	0.50
2:D:144:MET:SD	2:D:145:MET:HE2	2.52	0.50
1:B:743:PRO:O	1:B:747:ASN:HB2	2.12	0.50
1:B:505:LYS:HA	1:B:508:ILE:CD1	2.42	0.50
1:B:320:ARG:HG3	1:B:598:PRO:O	2.12	0.50
1:A:593:ILE:HG13	1:A:611:THR:HG21	1.94	0.50
1:C:712:PHE:CD2	1:C:716:LYS:HG2	2.47	0.50
1:C:307:LEU:H	1:C:307:LEU:HD12	1.77	0.50
1:B:629:ASN:HD21	1:B:631:SER:CB	2.24	0.49
1:A:456:LYS:HD3	1:A:471:TRP:HD1	1.77	0.49
1:C:325:TYR:HB2	1:C:498:ALA:HB3	1.93	0.49

*Continued on next page...*

*Continued from previous page...*

Atom-1	Atom-2	Interatomic distance (Å)	Clash overlap (Å)
1:B:322:LEU:HD23	1:B:503:GLU:OE1	2.12	0.49
1:A:438:ASN:ND2	1:A:438:ASN:C	2.64	0.49
1:A:697:ILE:HD11	1:A:731:GLU:HB3	1.95	0.49
1:C:349:ASN:ND2	1:C:349:ASN:H	2.11	0.49
1:B:780:LEU:HB3	1:B:782:PHE:CE1	2.47	0.49
1:A:526:GLN:C	1:A:529:VAL:HG12	2.32	0.49
1:C:754:GLU:O	1:C:757:THR:HB	2.12	0.49
1:B:395:GLU:HG3	1:B:396:GLY:N	2.27	0.49
1:C:623:ASP:H	2:F:94:LYS:HD2	1.75	0.49
1:B:581:GLN:NE2	1:B:628:PHE:HA	2.22	0.49
2:E:37:ARG:HA	2:E:41:GLN:O	2.11	0.49
1:C:650:THR:O	1:C:652:ALA:N	2.45	0.49
1:B:745:TYR:HB3	1:B:749:PHE:CE1	2.38	0.49
1:B:318:ILE:CD1	1:B:318:ILE:N	2.76	0.49
1:B:525:LYS:O	1:B:528:GLY:N	2.46	0.49
1:B:717:LYS:CA	1:B:720:ILE:HG12	2.41	0.49
1:C:629:ASN:HB3	1:C:632:TYR:CE2	2.47	0.49
1:B:761:GLN:NE2	1:B:773:PHE:N	2.61	0.49
1:B:514:ASP:C	1:B:516:VAL:H	2.16	0.49
2:D:7:GLU:HA	2:D:10:ALA:HB3	1.95	0.49
2:D:20:ASP:C	2:D:22:ASP:H	2.16	0.49
1:C:549:LEU:N	1:C:549:LEU:HD12	2.27	0.49
1:C:540:ARG:CZ	1:C:627:TYR:CE1	2.96	0.49
1:C:650:THR:C	1:C:652:ALA:N	2.66	0.49
1:B:455:TYR:HA	1:B:471:TRP:HZ3	1.77	0.49
1:B:306:GLY:O	1:B:336:THR:OG1	2.25	0.49
1:B:648:PRO:O	1:B:651:LYS:CB	2.61	0.49
2:D:117:THR:HG23	2:D:120:GLU:OE2	2.13	0.49
1:A:617:LYS:HG2	1:A:618:ASN:HD22	1.76	0.49
1:C:777:TYR:HD1	1:C:780:LEU:HD21	1.76	0.49
1:A:657:ILE:HG22	1:A:756:ILE:HA	1.94	0.49
1:B:722:ILE:HG12	1:B:760:VAL:HG13	1.95	0.48
1:A:522:SER:OG	2:D:127:GLU:HG3	2.13	0.48
1:B:463:THR:HG22	1:B:464:VAL:N	2.28	0.48
2:D:92:PHE:CE2	2:D:108:VAL:HG11	2.48	0.48
1:C:505:LYS:HD3	2:F:112:LEU:O	2.13	0.48
2:E:20:ASP:C	2:E:22:ASP:H	2.16	0.48
2:F:95:ASP:OD2	2:F:97:ASN:HB3	2.13	0.48
1:C:617:LYS:HG2	1:C:618:ASN:HD22	1.77	0.48
1:C:360:VAL:HG21	1:C:365:PRO:HB3	1.95	0.48
1:B:345:THR:HB	1:B:491:ASP:CB	2.44	0.48

*Continued on next page...*

*Continued from previous page...*

Atom-1	Atom-2	Interatomic distance (Å)	Clash overlap (Å)
1:A:307:LEU:HD12	1:A:307:LEU:H	1.78	0.48
1:A:445:ARG:NE	1:A:471:TRP:CE2	2.81	0.48
1:B:323:ASN:HD22	1:B:598:PRO:CB	2.26	0.48
1:A:502:THR:O	1:A:505:LYS:HB3	2.14	0.48
2:F:103:ALA:O	2:F:106:ARG:HB3	2.13	0.48
2:F:37:ARG:HA	2:F:41:GLN:O	2.13	0.48
1:B:307:LEU:N	1:B:307:LEU:HD12	2.28	0.48
1:A:529:VAL:HG13	1:A:530:THR:N	2.28	0.48
1:A:306:GLY:O	1:A:336:THR:OG1	2.31	0.48
1:A:395:GLU:HG3	1:A:396:GLY:N	2.28	0.48
1:B:730:ASN:CG	1:B:730:ASN:O	2.51	0.48
1:A:325:TYR:HB2	1:A:498:ALA:HB3	1.95	0.48
1:A:615:ILE:O	1:A:620:THR:HG22	2.14	0.48
2:E:117:THR:HG23	2:E:120:GLU:OE2	2.13	0.48
2:D:103:ALA:O	2:D:106:ARG:HB3	2.14	0.48
1:B:296:LEU:HD21	1:B:606:LYS:HE3	1.95	0.48
1:B:745:TYR:O	1:B:749:PHE:CD1	2.67	0.48
1:C:723:PHE:HB2	1:C:793:PHE:CE2	2.49	0.48
1:B:355:SER:HB2	1:B:371:SER:HA	1.95	0.48
1:C:523:LEU:HD13	2:F:127:GLU:HB3	1.94	0.48
1:B:318:ILE:HG21	1:B:556:MET:CE	2.43	0.48
1:A:327:LEU:O	1:A:495:PHE:N	2.44	0.48
1:B:469:PHE:CB	1:B:472:ARG:HH21	2.26	0.48
1:A:540:ARG:CZ	1:A:627:TYR:CE1	2.97	0.48
2:F:97:ASN:HD21	2:F:99:TYR:HB2	1.79	0.48
2:E:7:GLU:HA	2:E:10:ALA:HB3	1.95	0.48
1:C:661:ALA:O	1:C:663:PHE:N	2.38	0.48
1:A:513:TRP:HH2	2:D:114:GLU:N	2.12	0.48
1:C:437:SER:C	1:C:439:ASN:H	2.18	0.48
1:B:655:ASN:N	1:B:755:ARG:HD2	2.29	0.47
1:C:629:ASN:HD21	1:C:631:SER:CB	2.27	0.47
2:F:7:GLU:HA	2:F:10:ALA:HB3	1.96	0.47
1:C:294:ASP:O	1:C:606:LYS:HG3	2.14	0.47
1:B:549:LEU:HG	1:B:550:SER:N	2.28	0.47
1:B:659:THR:HA	1:B:661:ALA:HB3	1.95	0.47
1:B:586:PHE:HA	1:B:639:ASN:ND2	2.28	0.47
1:A:777:TYR:O	1:A:780:LEU:HG	2.14	0.47
1:B:780:LEU:HB3	1:B:782:PHE:HE1	1.78	0.47
1:C:346:LYS:CE	5:C:3999:EMA:O1A	2.62	0.47
1:C:755:ARG:O	1:C:756:ILE:C	2.53	0.47
1:A:768:LYS:HD2	1:A:797:ILE:O	2.14	0.47

*Continued on next page...*

*Continued from previous page...*

Atom-1	Atom-2	Interatomic distance (Å)	Clash overlap (Å)
1:C:661:ALA:C	1:C:663:PHE:H	2.16	0.47
1:B:794:GLN:NE2	1:B:797:ILE:HD13	2.29	0.47
2:E:83:GLU:O	2:E:87:GLU:HG3	2.14	0.47
1:C:540:ARG:NH2	2:F:87:GLU:OE1	2.48	0.47
1:C:438:ASN:ND2	1:C:438:ASN:C	2.65	0.47
1:C:502:THR:O	1:C:505:LYS:HB3	2.14	0.47
2:E:5:THR:O	2:E:8:GLN:HB2	2.15	0.47
1:C:338:LEU:O	1:C:343:VAL:HG23	2.14	0.47
1:C:670:ILE:HD11	1:C:744:GLU:C	2.35	0.47
1:C:306:GLY:O	1:C:336:THR:OG1	2.28	0.47
1:A:577:HIS:O	1:A:578:GLY:C	2.51	0.47
1:C:530:THR:O	1:C:534:ILE:HG13	2.14	0.47
1:C:761:GLN:NE2	1:C:761:GLN:HA	2.30	0.47
1:A:349:ASN:H	1:A:349:ASN:ND2	2.12	0.47
2:F:20:ASP:C	2:F:22:ASP:H	2.16	0.47
2:E:120:GLU:O	2:E:123:GLU:HB2	2.14	0.47
1:A:353:LYS:N	1:A:368:GLN:HE22	2.12	0.47
1:A:759:GLN:HE21	1:A:759:GLN:CA	2.27	0.47
1:A:515:LYS:O	1:A:515:LYS:HG2	2.14	0.47
1:B:349:ASN:ND2	1:B:349:ASN:H	2.13	0.47
1:B:438:ASN:ND2	1:B:438:ASN:C	2.67	0.47
1:B:360:VAL:HG21	1:B:365:PRO:HB3	1.95	0.47
2:E:8:GLN:NE2	2:E:8:GLN:HA	2.30	0.47
1:B:655:ASN:HA	1:B:759:GLN:NE2	2.30	0.47
1:B:660:SER:N	1:B:662:GLU:H	2.11	0.47
1:B:794:GLN:HE21	1:B:797:ILE:HD13	1.78	0.47
2:F:81:SER:O	2:F:82:GLU:C	2.54	0.47
2:D:49:GLN:HA	2:D:52:ILE:HG22	1.97	0.47
2:D:86:ARG:HA	2:D:138:TYR:HE1	1.79	0.47
2:E:144:MET:SD	2:E:145:MET:HE2	2.55	0.47
1:C:636:ALA:O	1:C:640:LYS:HA	2.14	0.47
1:C:633:ASN:ND2	1:C:645:TRP:H	1.94	0.47
2:D:107:HIS:O	2:D:108:VAL:C	2.53	0.47
1:A:670:ILE:HG23	1:A:670:ILE:O	2.15	0.47
1:C:714:GLN:HE22	1:C:717:LYS:NZ	2.13	0.47
1:B:587:PRO:HD2	1:B:639:ASN:HD21	1.79	0.46
2:F:65:PHE:CD1	2:F:65:PHE:N	2.83	0.46
1:C:695:LYS:NZ	2:F:18:LEU:HD13	2.30	0.46
1:C:768:LYS:HD2	1:C:797:ILE:O	2.15	0.46
2:E:49:GLN:HA	2:E:52:ILE:HG22	1.97	0.46
1:A:364:ILE:HB	1:A:477:MET:HB2	1.98	0.46

*Continued on next page...*

*Continued from previous page...*

Atom-1	Atom-2	Interatomic distance (Å)	Clash overlap (Å)
1:B:437:SER:C	1:B:439:ASN:H	2.17	0.46
1:C:323:ASN:HD22	1:C:598:PRO:CB	2.28	0.46
1:C:777:TYR:O	1:C:780:LEU:HG	2.15	0.46
1:C:694:VAL:HG23	1:C:695:LYS:H	1.80	0.46
1:C:469:PHE:HB3	1:C:472:ARG:HH21	1.79	0.46
1:C:661:ALA:C	1:C:663:PHE:N	2.69	0.46
1:B:561:ASN:O	1:B:562:GLU:C	2.54	0.46
1:C:514:ASP:C	1:C:516:VAL:N	2.68	0.46
1:B:663:PHE:CB	2:E:14:GLU:HG3	2.45	0.46
2:F:49:GLN:HA	2:F:52:ILE:HG22	1.97	0.46
1:A:463:THR:HG22	1:A:464:VAL:N	2.30	0.46
1:C:459:GLU:C	1:C:461:LYS:H	2.18	0.46
1:B:733:GLU:C	1:B:735:VAL:N	2.69	0.46
1:B:712:PHE:HB3	1:B:716:LYS:HD3	1.98	0.46
2:F:65:PHE:HB2	2:F:66:PRO:CD	2.42	0.46
2:E:81:SER:O	2:E:82:GLU:C	2.53	0.46
1:B:324:THR:OG1	1:B:499:PRO:HA	2.16	0.46
1:B:720:ILE:HB	1:B:724:ARG:HE	1.81	0.46
1:C:629:ASN:ND2	1:C:631:SER:CB	2.75	0.46
2:E:65:PHE:HB2	2:E:66:PRO:CD	2.42	0.46
2:F:8:GLN:HA	2:F:8:GLN:NE2	2.31	0.46
2:F:120:GLU:O	2:F:123:GLU:HB2	2.16	0.46
1:A:459:GLU:C	1:A:461:LYS:H	2.19	0.46
2:D:97:ASN:HD21	2:D:99:TYR:HB2	1.80	0.46
1:B:593:ILE:HG13	1:B:611:THR:HG21	1.98	0.46
1:A:700:TYR:O	1:A:703:ASP:HB2	2.16	0.46
1:A:754:GLU:O	1:A:757:THR:HB	2.15	0.46
1:A:338:LEU:O	1:A:343:VAL:HG23	2.16	0.46
1:B:658:PRO:C	1:B:659:THR:O	2.53	0.46
1:B:629:ASN:ND2	1:B:631:SER:CB	2.75	0.46
1:C:657:ILE:HG12	1:C:756:ILE:HD13	1.96	0.46
1:A:755:ARG:O	1:A:756:ILE:C	2.53	0.46
1:A:526:GLN:OE1	2:D:124:MET:HB3	2.15	0.46
1:A:723:PHE:HB2	1:A:793:PHE:CE2	2.50	0.46
1:C:633:ASN:N	1:C:633:ASN:ND2	2.55	0.46
1:A:639:ASN:OD1	1:A:641:ALA:HB2	2.15	0.46
1:B:353:LYS:N	1:B:368:GLN:HE22	2.13	0.46
2:D:65:PHE:CD1	2:D:65:PHE:N	2.84	0.46
1:C:759:GLN:CA	1:C:759:GLN:HE21	2.28	0.46
1:B:608:TRP:CZ2	1:B:643:ILE:HG21	2.50	0.46
2:D:62:THR:C	2:D:63:ILE:HD12	2.37	0.46

*Continued on next page...*

*Continued from previous page...*

Atom-1	Atom-2	Interatomic distance (Å)	Clash overlap (Å)
1:A:657:ILE:HD11	1:A:704:TYR:CG	2.51	0.46
1:B:424:LYS:HG3	1:B:425:GLU:N	2.30	0.46
1:C:639:ASN:OD1	1:C:641:ALA:HB2	2.16	0.46
2:D:8:GLN:HA	2:D:8:GLN:NE2	2.31	0.46
1:B:734:ASN:C	1:B:736:LEU:H	2.18	0.46
2:E:65:PHE:N	2:E:65:PHE:CD1	2.83	0.45
1:B:784:GLU:HG2	1:B:788:ASP:OD2	2.16	0.45
1:B:346:LYS:HZ1	5:B:2999:EMA:PG	2.39	0.45
2:F:62:THR:C	2:F:63:ILE:HD12	2.36	0.45
1:C:295:VAL:HG21	1:C:603:ILE:CG2	2.29	0.45
1:B:323:ASN:CG	1:B:500:SER:HB3	2.36	0.45
1:A:718:ARG:HD2	1:A:767:GLN:OE1	2.15	0.45
1:A:586:PHE:HA	1:A:639:ASN:ND2	2.30	0.45
1:C:514:ASP:O	1:C:516:VAL:N	2.49	0.45
1:C:615:ILE:O	1:C:620:THR:HG22	2.16	0.45
1:C:450:ASN:OD1	1:C:452:GLU:HG3	2.16	0.45
2:D:120:GLU:O	2:D:123:GLU:HB2	2.16	0.45
2:D:95:ASP:OD1	2:D:104:GLU:OE2	2.35	0.45
1:C:462:ILE:HG12	1:C:466:GLY:HA2	1.97	0.45
1:B:521:ASN:C	1:B:521:ASN:HD22	2.19	0.45
1:C:353:LYS:N	1:C:368:GLN:HE22	2.14	0.45
1:C:499:PRO:HD3	1:C:552:TRP:CH2	2.51	0.45
2:F:117:THR:HG23	2:F:120:GLU:OE2	2.16	0.45
2:D:79:THR:O	2:D:81:SER:N	2.49	0.45
1:A:307:LEU:N	1:A:307:LEU:HD12	2.31	0.45
2:D:86:ARG:HA	2:D:138:TYR:CE1	2.51	0.45
1:B:384:ASN:O	1:B:385:LEU:C	2.55	0.45
1:C:327:LEU:HG	1:C:595:ILE:HG23	1.99	0.45
1:C:713:SER:O	1:C:716:LYS:HB3	2.16	0.45
1:C:783:THR:O	1:C:784:GLU:OE1	2.35	0.45
1:A:462:ILE:HG12	1:A:466:GLY:HA2	1.98	0.45
1:B:459:GLU:C	1:B:461:LYS:H	2.19	0.45
1:A:785:ASN:ND2	1:A:785:ASN:H	2.10	0.45
1:A:633:ASN:H	1:A:633:ASN:HD22	1.64	0.45
1:A:549:LEU:HD12	1:A:549:LEU:N	2.30	0.45
1:A:777:TYR:HD1	1:A:780:LEU:HD21	1.76	0.45
1:B:513:TRP:CZ2	2:E:112:LEU:O	2.69	0.45
1:A:657:ILE:HB	1:A:756:ILE:HD13	1.98	0.45
1:C:781:ASN:HD22	1:C:782:PHE:N	2.05	0.45
1:B:360:VAL:O	1:B:360:VAL:CG2	2.64	0.45
1:C:499:PRO:HG2	1:C:625:LEU:HB3	1.98	0.45

*Continued on next page...*

*Continued from previous page...*

Atom-1	Atom-2	Interatomic distance (Å)	Clash overlap (Å)
2:F:79:THR:O	2:F:81:SER:N	2.50	0.45
1:B:445:ARG:NH1	1:B:471:TRP:CD1	2.85	0.45
1:B:735:VAL:HG13	1:B:735:VAL:O	2.16	0.45
1:B:656:THR:O	1:B:705:TYR:HE1	2.00	0.45
1:B:538:ILE:CD1	1:B:538:ILE:N	2.80	0.45
1:A:789:ASN:ND2	1:A:789:ASN:N	2.63	0.45
1:C:730:ASN:C	1:C:732:ILE:H	2.20	0.45
1:A:607:ASN:O	1:A:610:MET:N	2.50	0.45
2:F:105:LEU:HD12	2:F:125:ILE:HD13	1.99	0.45
1:B:316:LYS:HD3	1:B:600:GLY:O	2.17	0.45
1:A:324:THR:OG1	1:A:499:PRO:HA	2.16	0.45
1:B:509:PRO:HD3	1:B:536:TYR:CE1	2.49	0.45
1:C:657:ILE:HG23	1:C:658:PRO:HD2	1.98	0.45
2:E:51:MET:C	2:E:53:ASN:H	2.20	0.45
1:A:295:VAL:HG22	1:A:603:ILE:HG22	1.91	0.44
2:D:81:SER:O	2:D:82:GLU:C	2.55	0.44
1:B:525:LYS:C	1:B:528:GLY:H	2.20	0.44
2:D:51:MET:C	2:D:53:ASN:H	2.21	0.44
1:A:499:PRO:HD3	1:A:552:TRP:CH2	2.52	0.44
1:A:540:ARG:HD2	1:A:582:ASP:OD1	2.17	0.44
1:A:525:LYS:C	1:A:527:LYS:N	2.71	0.44
1:A:730:ASN:C	1:A:732:ILE:H	2.20	0.44
1:B:657:ILE:O	1:B:659:THR:N	2.51	0.44
1:B:580:GLU:CD	1:B:583:ASN:HD22	2.20	0.44
1:B:651:LYS:HB3	1:B:652:ALA:H	1.69	0.44
1:C:689:ALA:O	1:C:690:LYS:HB2	2.17	0.44
1:C:540:ARG:CD	1:C:582:ASP:OD1	2.65	0.44
1:A:670:ILE:HG23	1:A:745:TYR:CZ	2.53	0.44
1:A:700:TYR:CD1	1:A:727:GLN:HB3	2.52	0.44
1:B:395:GLU:C	1:B:397:GLU:H	2.21	0.44
1:C:761:GLN:HA	1:C:761:GLN:HE21	1.81	0.44
2:E:89:PHE:CE1	2:E:100:ILE:HG13	2.53	0.44
1:B:415:GLU:C	1:B:417:GLY:H	2.21	0.44
1:A:360:VAL:HG21	1:A:365:PRO:HB3	1.99	0.44
2:E:79:THR:O	2:E:81:SER:N	2.50	0.44
1:B:298:GLY:O	1:B:299:GLU:C	2.56	0.44
1:C:307:LEU:N	1:C:307:LEU:HD12	2.32	0.44
1:A:437:SER:C	1:A:439:ASN:H	2.20	0.44
1:B:526:GLN:HG3	2:E:124:MET:CE	2.47	0.44
1:B:505:LYS:HA	1:B:508:ILE:HD11	2.00	0.44
1:C:450:ASN:O	1:C:451:ASN:HB2	2.18	0.44

*Continued on next page...*

*Continued from previous page...*

Atom-1	Atom-2	Interatomic distance (Å)	Clash overlap (Å)
1:C:445:ARG:HD3	1:C:454:GLN:HB2	1.99	0.44
1:B:717:LYS:O	1:B:720:ILE:HG12	2.18	0.44
1:C:628:PHE:O	1:C:628:PHE:CD1	2.71	0.44
1:A:432:TYR:CE1	1:A:471:TRP:HZ3	2.35	0.44
2:F:107:HIS:O	2:F:108:VAL:C	2.56	0.44
2:F:51:MET:C	2:F:53:ASN:H	2.21	0.44
1:A:317:LYS:HB2	1:A:317:LYS:HE2	1.88	0.44
1:C:576:ASN:O	1:C:577:HIS:HB3	2.18	0.44
1:B:537:GLY:C	1:B:538:ILE:HD12	2.38	0.44
1:B:607:ASN:O	1:B:610:MET:N	2.51	0.44
1:A:348:LEU:O	1:A:351:HIS:CE1	2.71	0.44
1:B:447:SER:O	1:B:451:ASN:HA	2.18	0.44
1:C:739:LYS:HG3	1:C:740:GLN:N	2.33	0.44
1:A:345:THR:HB	1:A:491:ASP:HB3	1.99	0.44
1:C:789:ASN:ND2	1:C:789:ASN:N	2.63	0.44
2:F:86:ARG:HA	2:F:138:TYR:CE1	2.53	0.44
1:C:628:PHE:CD1	1:C:628:PHE:C	2.91	0.43
1:C:395:GLU:C	1:C:397:GLU:H	2.21	0.43
1:A:395:GLU:C	1:A:397:GLU:H	2.21	0.43
1:A:447:SER:O	1:A:451:ASN:HA	2.18	0.43
1:C:415:GLU:C	1:C:417:GLY:H	2.21	0.43
1:C:424:LYS:HG3	1:C:425:GLU:N	2.32	0.43
1:A:305:SER:HB3	1:A:594:PHE:CD1	2.53	0.43
1:C:672:ARG:NE	1:C:672:ARG:HA	2.33	0.43
1:C:786:GLU:HA	1:C:786:GLU:OE1	2.18	0.43
1:B:717:LYS:HA	1:B:720:ILE:CG1	2.45	0.43
1:C:320:ARG:HA	1:C:598:PRO:O	2.17	0.43
2:E:107:HIS:O	2:E:108:VAL:C	2.56	0.43
1:C:695:LYS:HG3	2:F:18:LEU:HD22	2.00	0.43
2:E:95:ASP:OD1	2:E:104:GLU:OE2	2.36	0.43
1:C:550:SER:H	1:C:553:GLN:NE2	2.16	0.43
1:A:415:GLU:C	1:A:417:GLY:H	2.21	0.43
1:C:463:THR:HG22	1:C:464:VAL:N	2.32	0.43
1:C:324:THR:OG1	1:C:499:PRO:CA	2.66	0.43
1:C:530:THR:HG21	2:F:145:MET:SD	2.58	0.43
1:B:296:LEU:HD21	1:B:606:LYS:CE	2.49	0.43
1:B:657:ILE:HG13	1:B:658:PRO:N	2.33	0.43
1:B:744:GLU:CD	1:C:397:GLU:HG2	2.39	0.43
1:B:415:GLU:C	1:B:417:GLY:N	2.72	0.43
2:E:86:ARG:HA	2:E:138:TYR:CE1	2.52	0.43
2:E:105:LEU:HD12	2:E:125:ILE:HD13	1.99	0.43

*Continued on next page...*



*Continued from previous page...*

Atom-1	Atom-2	Interatomic distance (Å)	Clash overlap (Å)
1:C:415:GLU:O	1:C:417:GLY:N	2.51	0.43
1:A:663:PHE:CE1	1:A:752:LEU:HD11	2.53	0.43
1:B:712:PHE:HB3	1:B:716:LYS:HB3	1.99	0.43
1:C:660:SER:O	1:C:663:PHE:HB3	2.18	0.43
1:B:796:ILE:O	1:B:796:ILE:HG22	2.18	0.43
2:E:62:THR:C	2:E:63:ILE:HD12	2.38	0.43
1:A:450:ASN:O	1:A:451:ASN:HB2	2.19	0.43
1:A:445:ARG:NH2	1:A:471:TRP:NE1	2.66	0.43
1:C:792:VAL:CG1	1:C:796:ILE:HD11	2.42	0.43
1:A:653:LYS:O	1:A:755:ARG:HD2	2.19	0.43
1:C:652:ALA:C	1:C:654:ILE:H	2.22	0.43
1:A:415:GLU:C	1:A:417:GLY:N	2.72	0.43
1:A:628:PHE:CD1	1:A:628:PHE:C	2.92	0.43
1:A:639:ASN:ND2	1:A:639:ASN:N	2.60	0.43
1:B:327:LEU:O	1:B:495:PHE:N	2.49	0.43
1:C:294:ASP:O	1:C:610:MET:HE1	2.18	0.43
1:B:794:GLN:O	1:B:797:ILE:HG23	2.19	0.43
1:A:783:THR:C	1:A:784:GLU:OE1	2.57	0.43
2:E:86:ARG:HA	2:E:138:TYR:HE1	1.84	0.43
1:A:509:PRO:HG2	1:A:512:GLU:OE1	2.19	0.43
1:A:787:THR:O	1:A:787:THR:CG2	2.55	0.43
1:A:759:GLN:NE2	1:A:759:GLN:CA	2.82	0.43
1:A:714:GLN:HE22	1:A:717:LYS:NZ	2.17	0.43
1:B:415:GLU:O	1:B:417:GLY:N	2.52	0.43
1:C:415:GLU:C	1:C:417:GLY:N	2.70	0.43
1:C:293:ILE:HD12	1:C:293:ILE:N	2.34	0.43
1:B:317:LYS:HB2	1:B:317:LYS:HE2	1.88	0.43
1:B:654:ILE:HG13	1:B:654:ILE:O	2.19	0.43
2:D:65:PHE:HB2	2:D:66:PRO:CD	2.42	0.43
1:C:695:LYS:HZ2	2:F:18:LEU:HB3	1.83	0.43
1:A:294:ASP:O	1:A:610:MET:CE	2.66	0.43
2:E:87:GLU:O	2:E:91:VAL:HG23	2.19	0.43
1:B:714:GLN:HA	1:B:717:LYS:CE	2.49	0.42
1:B:463:THR:HB	1:B:467:GLU:H	1.83	0.42
1:A:636:ALA:HA	1:A:637:PRO:HD3	1.89	0.42
1:B:752:LEU:O	1:B:755:ARG:HB2	2.19	0.42
1:B:761:GLN:O	1:B:765:THR:HG23	2.19	0.42
1:A:514:ASP:C	1:A:516:VAL:H	2.21	0.42
1:A:657:ILE:CG2	1:A:756:ILE:HD13	2.49	0.42
1:C:712:PHE:HB3	1:C:716:LYS:HG2	2.01	0.42
2:D:95:ASP:OD2	2:D:97:ASN:HB3	2.19	0.42

*Continued on next page...*

*Continued from previous page...*

Atom-1	Atom-2	Interatomic distance (Å)	Clash overlap (Å)
1:C:505:LYS:HE3	1:C:513:TRP:CE2	2.54	0.42
2:F:137:ASN:OD1	2:F:137:ASN:C	2.58	0.42
1:A:650:THR:O	1:A:651:LYS:C	2.57	0.42
1:B:731:GLU:HG2	1:B:731:GLU:H	1.35	0.42
1:A:628:PHE:O	1:A:628:PHE:CD1	2.72	0.42
1:A:644:GLU:OE2	1:B:400:LYS:NZ	2.53	0.42
1:C:776:LEU:HD12	1:C:776:LEU:N	2.35	0.42
1:A:776:LEU:HD12	1:A:776:LEU:N	2.35	0.42
1:A:516:VAL:O	1:A:517:VAL:C	2.58	0.42
1:A:360:VAL:CG2	1:A:360:VAL:O	2.65	0.42
2:E:97:ASN:ND2	2:E:99:TYR:HB2	2.34	0.42
1:B:450:ASN:O	1:B:451:ASN:HB2	2.18	0.42
2:E:64:ASP:OD1	2:E:67:GLU:HG3	2.19	0.42
1:C:710:HIS:O	1:C:710:HIS:CG	2.73	0.42
1:B:657:ILE:HD12	1:B:658:PRO:HD3	1.99	0.42
1:A:295:VAL:HG23	1:A:604:LEU:O	2.20	0.42
1:B:629:ASN:HB3	1:B:632:TYR:CE2	2.54	0.42
1:C:629:ASN:HB3	1:C:632:TYR:CD2	2.55	0.42
1:C:775:LEU:HD12	1:C:776:LEU:CD1	2.50	0.42
1:B:615:ILE:O	1:B:620:THR:HG22	2.20	0.42
1:A:526:GLN:O	1:A:529:VAL:HG12	2.19	0.42
1:A:394:HIS:O	1:A:395:GLU:C	2.57	0.42
1:A:346:LYS:HE3	5:A:1999:EMA:O2G	2.18	0.42
2:D:64:ASP:OD1	2:D:67:GLU:HG3	2.20	0.42
1:A:355:SER:HB2	1:A:371:SER:HA	2.01	0.42
1:B:406:ASP:OD2	1:B:407:HIS:N	2.51	0.42
1:C:670:ILE:CD1	1:C:745:TYR:HA	2.50	0.42
1:A:648:PRO:O	1:A:651:LYS:HB2	2.19	0.42
1:A:370:LEU:HD11	1:A:455:TYR:CE1	2.55	0.42
2:F:64:ASP:OD1	2:F:67:GLU:HG3	2.20	0.42
1:A:710:HIS:O	1:A:710:HIS:CG	2.73	0.42
1:B:731:GLU:HG2	1:B:733:GLU:HB2	2.02	0.42
2:F:7:GLU:O	2:F:11:GLU:HG3	2.19	0.42
1:C:340:LYS:C	1:C:342:GLY:H	2.23	0.42
1:B:370:LEU:HA	1:B:370:LEU:HD23	1.87	0.42
1:B:312:ALA:O	1:B:315:PHE:HB2	2.19	0.42
1:B:720:ILE:CG1	1:B:721:SER:N	2.79	0.42
1:A:323:ASN:ND2	1:A:598:PRO:CB	2.82	0.42
1:B:611:THR:O	1:B:615:ILE:HG13	2.19	0.42
1:C:349:ASN:H	1:C:349:ASN:HD22	1.68	0.42
1:C:332:ASN:O	1:C:335:ALA:HB3	2.19	0.42

*Continued on next page...*

*Continued from previous page...*

Atom-1	Atom-2	Interatomic distance (Å)	Clash overlap (Å)
1:B:653:LYS:O	1:B:755:ARG:HD3	2.20	0.42
1:A:323:ASN:ND2	1:A:598:PRO:HB2	2.30	0.42
1:B:346:LYS:NZ	5:B:2999:EMA:O1A	2.52	0.42
1:A:713:SER:O	1:A:716:LYS:HB3	2.19	0.42
1:B:636:ALA:O	1:B:640:LYS:HA	2.20	0.42
1:C:691:LYS:O	1:C:694:VAL:HG13	2.20	0.42
1:A:298:GLY:O	1:A:299:GLU:C	2.58	0.42
2:F:14:GLU:OE1	2:F:14:GLU:HA	2.20	0.42
2:F:86:ARG:HA	2:F:138:TYR:HE1	1.84	0.42
1:A:629:ASN:HB3	1:A:632:TYR:CD2	2.55	0.41
1:A:792:VAL:CG1	1:A:796:ILE:HD11	2.42	0.41
1:A:513:TRP:CE3	1:A:517:VAL:HG21	2.55	0.41
1:B:647:ASP:O	1:B:648:PRO:C	2.58	0.41
2:E:108:VAL:O	2:E:112:LEU:HG	2.20	0.41
2:F:108:VAL:O	2:F:112:LEU:HG	2.19	0.41
2:E:7:GLU:O	2:E:11:GLU:HG3	2.20	0.41
1:C:670:ILE:HG23	1:C:745:TYR:CE1	2.55	0.41
1:C:736:LEU:HD21	1:C:749:PHE:HB2	2.02	0.41
1:B:580:GLU:OE1	1:B:587:PRO:HA	2.20	0.41
1:C:663:PHE:CE2	1:C:667:LEU:HD11	2.56	0.41
2:F:5:THR:O	2:F:9:ILE:HG13	2.20	0.41
2:E:5:THR:CG2	2:E:8:GLN:HB2	2.50	0.41
1:C:740:GLN:CD	1:C:740:GLN:H	2.23	0.41
1:A:636:ALA:O	1:A:640:LYS:HA	2.20	0.41
1:C:592:GLU:HG2	1:C:604:LEU:HD21	2.02	0.41
1:B:485:LEU:HD12	1:B:485:LEU:HA	1.90	0.41
1:A:405:LEU:HA	1:A:405:LEU:HD23	1.78	0.41
1:C:581:GLN:O	1:C:629:ASN:HA	2.20	0.41
1:B:385:LEU:HD13	1:B:385:LEU:O	2.20	0.41
1:A:540:ARG:NH1	1:A:627:TYR:CE1	2.88	0.41
1:B:608:TRP:CZ2	1:B:643:ILE:CG2	3.03	0.41
1:C:695:LYS:CG	2:F:18:LEU:HD22	2.50	0.41
1:C:470:ASN:CG	1:C:471:TRP:H	2.24	0.41
1:B:445:ARG:CZ	1:B:471:TRP:CD1	3.03	0.41
1:C:740:GLN:N	1:C:740:GLN:CD	2.74	0.41
1:C:355:SER:HB2	1:C:371:SER:HA	2.03	0.41
1:C:322:LEU:O	1:C:323:ASN:C	2.59	0.41
1:A:505:LYS:HE3	1:A:513:TRP:CD2	2.55	0.41
1:C:658:PRO:HB3	1:C:755:ARG:NH2	2.34	0.41
1:C:759:GLN:CA	1:C:759:GLN:NE2	2.83	0.41
1:C:505:LYS:HE3	1:C:513:TRP:CD2	2.55	0.41

*Continued on next page...*

*Continued from previous page...*

Atom-1	Atom-2	Interatomic distance (Å)	Clash overlap (Å)
1:C:665:LYS:HG2	2:F:11:GLU:CD	2.41	0.41
1:C:730:ASN:C	1:C:732:ILE:N	2.73	0.41
2:D:105:LEU:HD12	2:D:125:ILE:HD13	2.02	0.41
1:C:388:LYS:O	1:C:392:THR:HG23	2.19	0.41
1:B:628:PHE:C	1:B:628:PHE:CD1	2.93	0.41
1:A:664:ILE:O	1:A:667:LEU:N	2.43	0.41
1:C:308:VAL:O	1:C:311:HIS:HB2	2.21	0.41
1:C:752:LEU:O	1:C:753:LYS:C	2.58	0.41
1:B:394:HIS:O	1:B:397:GLU:CB	2.69	0.41
1:A:730:ASN:C	1:A:732:ILE:N	2.74	0.41
1:A:340:LYS:C	1:A:342:GLY:H	2.23	0.41
1:B:654:ILE:C	1:B:655:ASN:ND2	2.74	0.41
1:B:745:TYR:O	1:B:748:TYR:HB3	2.20	0.41
1:C:510:GLN:HG3	1:C:510:GLN:O	2.20	0.41
2:D:108:VAL:O	2:D:112:LEU:HG	2.20	0.41
2:E:105:LEU:O	2:E:109:MET:HG2	2.21	0.41
1:C:406:ASP:OD2	1:C:407:HIS:N	2.53	0.41
1:C:569:TYR:CE2	1:C:572:GLY:O	2.73	0.41
1:A:699:GLY:O	1:A:702:SER:N	2.52	0.41
1:A:629:ASN:HD21	1:A:631:SER:CB	2.33	0.41
1:A:775:LEU:HD12	1:A:776:LEU:CD1	2.50	0.41
1:C:370:LEU:HD11	1:C:455:TYR:CE1	2.56	0.41
1:A:658:PRO:HB3	1:A:755:ARG:NH2	2.35	0.41
1:C:608:TRP:CZ2	1:C:643:ILE:HG21	2.55	0.41
1:A:713:SER:O	1:A:716:LYS:N	2.53	0.41
1:A:736:LEU:HD21	1:A:749:PHE:HB2	2.01	0.41
1:C:526:GLN:HB2	2:F:124:MET:CE	2.51	0.41
1:A:406:ASP:OD2	1:A:407:HIS:N	2.54	0.41
1:C:391:ILE:HD13	1:C:399:GLY:HA2	2.02	0.41
1:C:398:ILE:HG22	1:C:399:GLY:N	2.36	0.41
1:C:585:GLU:O	1:C:638:GLY:HA3	2.21	0.41
1:A:454:GLN:OE1	1:A:471:TRP:CE3	2.73	0.41
2:F:83:GLU:O	2:F:87:GLU:HG3	2.21	0.41
1:A:663:PHE:HE1	1:A:752:LEU:HD11	1.85	0.41
1:C:631:SER:O	1:C:632:TYR:C	2.59	0.41
1:A:581:GLN:O	1:A:629:ASN:HA	2.21	0.41
1:B:639:ASN:OD1	1:B:641:ALA:HB2	2.21	0.41
1:C:587:PRO:HD2	1:C:639:ASN:HD21	1.86	0.41
1:A:322:LEU:O	1:A:323:ASN:C	2.58	0.41
1:C:456:LYS:HD3	1:C:471:TRP:CE2	2.56	0.41
1:A:713:SER:O	1:A:714:GLN:C	2.58	0.41

*Continued on next page...*

*Continued from previous page...*

Atom-1	Atom-2	Interatomic distance (Å)	Clash overlap (Å)
1:A:349:ASN:H	1:A:349:ASN:HD22	1.69	0.41
1:C:364:ILE:HB	1:C:477:MET:HB2	2.02	0.41
1:B:733:GLU:O	1:B:735:VAL:N	2.53	0.41
1:B:322:LEU:O	1:B:323:ASN:C	2.60	0.41
1:B:524:GLU:HB2	1:B:527:LYS:HG2	2.02	0.41
2:F:39:LEU:HG	2:F:39:LEU:O	2.21	0.41
1:C:534:ILE:HG22	1:C:535:LYS:N	2.35	0.41
2:E:102:ALA:HB2	2:E:125:ILE:HG13	2.03	0.41
1:C:783:THR:HB	1:C:784:GLU:OE1	2.20	0.41
1:A:391:ILE:HD13	1:A:399:GLY:HA2	2.03	0.41
1:B:556:MET:HE2	1:B:560:LEU:CG	2.52	0.40
1:B:537:GLY:C	1:B:625:LEU:HD21	2.40	0.40
1:B:792:VAL:O	1:B:796:ILE:HG12	2.20	0.40
1:C:450:ASN:CG	1:C:452:GLU:HG3	2.42	0.40
1:B:391:ILE:HD13	1:B:399:GLY:HA2	2.03	0.40
2:F:29:THR:HG22	2:F:29:THR:O	2.21	0.40
1:B:659:THR:O	1:B:660:SER:CB	2.63	0.40
1:B:502:THR:OG1	1:B:503:GLU:N	2.54	0.40
1:B:628:PHE:CD1	1:B:628:PHE:O	2.74	0.40
1:A:608:TRP:CZ2	1:A:643:ILE:HG21	2.56	0.40
1:A:509:PRO:HG2	1:A:512:GLU:HB3	2.04	0.40
2:D:14:GLU:OE1	2:D:14:GLU:HA	2.21	0.40
1:A:400:LYS:NZ	1:C:644:GLU:OE2	2.53	0.40
1:A:773:PHE:N	1:A:775:LEU:CD2	2.84	0.40
1:B:791:GLU:HG3	1:B:792:VAL:N	2.36	0.40
1:A:668:SER:O	1:A:671:ARG:HB3	2.21	0.40
2:E:137:ASN:C	2:E:137:ASN:OD1	2.59	0.40
2:F:137:ASN:OD1	2:F:139:GLU:N	2.55	0.40
1:A:346:LYS:NZ	1:A:352:GLY:O	2.49	0.40
1:A:415:GLU:O	1:A:417:GLY:N	2.54	0.40
1:B:711:ILE:HG13	1:B:712:PHE:CD1	2.56	0.40
1:A:695:LYS:N	2:D:18:LEU:HD21	2.36	0.40
2:E:79:THR:C	2:E:81:SER:N	2.75	0.40
2:F:105:LEU:O	2:F:109:MET:HG2	2.21	0.40
1:A:346:LYS:HE2	1:A:364:ILE:HD12	2.03	0.40
1:B:526:GLN:HA	2:E:124:MET:HE2	2.04	0.40
1:C:699:GLY:O	1:C:702:SER:N	2.54	0.40
1:C:405:LEU:HD23	1:C:405:LEU:HA	1.80	0.40
1:C:549:LEU:HB3	1:C:578:GLY:HA2	2.03	0.40
1:B:654:ILE:HA	1:B:755:ARG:CD	2.48	0.40
1:B:562:GLU:HA	1:B:565:LYS:HG3	2.03	0.40

*Continued on next page...*

*Continued from previous page...*

Atom-1	Atom-2	Interatomic distance (Å)	Clash overlap (Å)
1:C:773:PHE:N	1:C:775:LEU:CD2	2.84	0.40
1:B:761:GLN:O	1:B:764:LEU:HB2	2.22	0.40
2:D:137:ASN:C	2:D:137:ASN:OD1	2.60	0.40
2:D:5:THR:N	2:D:8:GLN:HG3	2.37	0.40
1:A:752:LEU:O	1:A:753:LYS:C	2.60	0.40
1:B:592:GLU:HG2	1:B:604:LEU:HD21	2.03	0.40

There are no symmetry-related clashes.

## 5.3 Torsion angles [i](#)

### 5.3.1 Protein backbone [i](#)

In the following table, the Percentiles column shows the percent Ramachandran outliers of the chain as a percentile score with respect to all X-ray entries followed by that with respect to entries of similar resolution.

The Analysed column shows the number of residues for which the backbone conformation was analysed, and the total number of residues.

Mol	Chain	Analysed	Favoured	Allowed	Outliers	Percentiles	
1	A	478/507 (94%)	399 (84%)	69 (14%)	10 (2%)	9	42
1	B	462/507 (91%)	372 (80%)	69 (15%)	21 (4%)	3	21
1	C	499/507 (98%)	416 (83%)	68 (14%)	15 (3%)	5	33
2	D	141/147 (96%)	112 (79%)	26 (18%)	3 (2%)	9	42
2	E	141/147 (96%)	113 (80%)	25 (18%)	3 (2%)	9	42
2	F	141/147 (96%)	112 (79%)	26 (18%)	3 (2%)	9	42
All	All	1862/1962 (95%)	1524 (82%)	283 (15%)	55 (3%)	5	33

All (55) Ramachandran outliers are listed below:

Mol	Chain	Res	Type
1	A	299	GLU
1	A	429	GLY
1	B	299	GLU
1	B	429	GLY
1	B	515	LYS
1	C	299	GLU

*Continued on next page...*

*Continued from previous page...*

Mol	Chain	Res	Type
1	C	578	GLY
1	A	578	GLY
1	A	669	SER
1	A	787	THR
1	B	571	GLY
1	B	651	LYS
1	B	774	LYS
1	C	429	GLY
1	C	520	PRO
1	C	521	ASN
2	D	80	ASP
2	E	80	ASP
2	F	80	ASP
1	B	563	ALA
1	B	658	PRO
1	B	735	VAL
1	B	760	VAL
1	C	515	LYS
1	C	651	LYS
1	C	663	PHE
1	C	785	ASN
2	E	93	ASP
1	B	734	ASN
1	C	368	GLN
2	D	20	ASP
2	D	93	ASP
2	E	20	ASP
2	F	20	ASP
2	F	93	ASP
1	A	395	GLU
1	B	368	GLN
1	B	694	VAL
1	B	708	ALA
1	B	759	GLN
1	C	690	LYS
1	A	368	GLN
1	A	534	ILE
1	B	395	GLU
1	B	416	ASN
1	B	460	GLY
1	C	416	ASN
1	B	516	VAL

*Continued on next page...*

*Continued from previous page...*

Mol	Chain	Res	Type
1	C	298	GLY
1	C	460	GLY
1	A	460	GLY
1	A	298	GLY
1	B	298	GLY
1	C	534	ILE
1	B	792	VAL

### 5.3.2 Protein sidechains ⓘ

In the following table, the Percentiles column shows the percent sidechain outliers of the chain as a percentile score with respect to all X-ray entries followed by that with respect to entries of similar resolution.

The Analysed column shows the number of residues for which the sidechain conformation was analysed, and the total number of residues.

Mol	Chain	Analysed	Rotameric	Outliers	Percentiles	
1	A	432/452 (96%)	392 (91%)	40 (9%)	11	40
1	B	414/452 (92%)	369 (89%)	45 (11%)	8	32
1	C	448/452 (99%)	411 (92%)	37 (8%)	14	47
2	D	121/125 (97%)	118 (98%)	3 (2%)	55	82
2	E	121/125 (97%)	117 (97%)	4 (3%)	45	78
2	F	121/125 (97%)	117 (97%)	4 (3%)	45	78
All	All	1657/1731 (96%)	1524 (92%)	133 (8%)	15	49

All (133) residues with a non-rotameric sidechain are listed below:

Mol	Chain	Res	Type
1	A	295	VAL
1	A	303	LYS
1	A	309	PRO
1	A	346	LYS
1	A	373	LYS
1	A	385	LEU
1	A	400	LYS
1	A	406	ASP
1	A	419	ILE
1	A	438	ASN
1	A	445	ARG

*Continued on next page...*



*Continued from previous page...*

Mol	Chain	Res	Type
1	A	447	SER
1	A	455	TYR
1	A	459	GLU
1	A	462	ILE
1	A	476	VAL
1	A	485	LEU
1	A	499	PRO
1	A	511	LYS
1	A	521	ASN
1	A	524	GLU
1	A	549	LEU
1	A	589	LYS
1	A	599	GLU
1	A	603	ILE
1	A	618	ASN
1	A	622	LYS
1	A	629	ASN
1	A	633	ASN
1	A	639	ASN
1	A	646	THR
1	A	659	THR
1	A	670	ILE
1	A	693	SER
1	A	694	VAL
1	A	707	SER
1	A	759	GLN
1	A	775	LEU
1	A	781	ASN
1	A	784	GLU
1	B	295	VAL
1	B	299	GLU
1	B	303	LYS
1	B	320	ARG
1	B	373	LYS
1	B	385	LEU
1	B	400	LYS
1	B	406	ASP
1	B	434	LEU
1	B	438	ASN
1	B	447	SER
1	B	455	TYR
1	B	458	LYS

*Continued on next page...*

*Continued from previous page...*

Mol	Chain	Res	Type
1	B	459	GLU
1	B	462	ILE
1	B	476	VAL
1	B	485	LEU
1	B	501	LEU
1	B	521	ASN
1	B	536	TYR
1	B	540	ARG
1	B	545	THR
1	B	546	LYS
1	B	552	TRP
1	B	567	THR
1	B	574	VAL
1	B	589	LYS
1	B	599	GLU
1	B	603	ILE
1	B	613	ARG
1	B	618	ASN
1	B	622	LYS
1	B	629	ASN
1	B	633	ASN
1	B	639	ASN
1	B	646	THR
1	B	714	GLN
1	B	729	TYR
1	B	739	LYS
1	B	744	GLU
1	B	747	ASN
1	B	761	GLN
1	B	784	GLU
1	B	789	ASN
1	B	790	PHE
1	C	295	VAL
1	C	303	LYS
1	C	320	ARG
1	C	373	LYS
1	C	385	LEU
1	C	388	LYS
1	C	400	LYS
1	C	406	ASP
1	C	419	ILE
1	C	434	LEU

*Continued on next page...*

*Continued from previous page...*

Mol	Chain	Res	Type
1	C	438	ASN
1	C	445	ARG
1	C	447	SER
1	C	455	TYR
1	C	459	GLU
1	C	462	ILE
1	C	476	VAL
1	C	485	LEU
1	C	499	PRO
1	C	531	ASN
1	C	535	LYS
1	C	549	LEU
1	C	589	LYS
1	C	599	GLU
1	C	603	ILE
1	C	613	ARG
1	C	618	ASN
1	C	622	LYS
1	C	629	ASN
1	C	633	ASN
1	C	639	ASN
1	C	646	THR
1	C	707	SER
1	C	759	GLN
1	C	775	LEU
1	C	781	ASN
1	C	784	GLU
2	D	76	MET
2	D	110	THR
2	D	135	GLN
2	E	58	ASP
2	E	76	MET
2	E	110	THR
2	E	135	GLN
2	F	58	ASP
2	F	76	MET
2	F	110	THR
2	F	135	GLN

Some sidechains can be flipped to improve hydrogen bonding and reduce clashes. All (69) such sidechains are listed below:

Mol	Chain	Res	Type
1	A	323	ASN
1	A	351	HIS
1	A	368	GLN
1	A	438	ASN
1	A	507	GLN
1	A	518	ASN
1	A	521	ASN
1	A	553	GLN
1	A	581	GLN
1	A	607	ASN
1	A	618	ASN
1	A	629	ASN
1	A	633	ASN
1	A	639	ASN
1	A	666	ASN
1	A	714	GLN
1	A	758	ASN
1	A	759	GLN
1	A	781	ASN
1	A	789	ASN
1	A	794	GLN
1	B	323	ASN
1	B	351	HIS
1	B	368	GLN
1	B	376	GLN
1	B	377	GLN
1	B	438	ASN
1	B	507	GLN
1	B	521	ASN
1	B	551	ASN
1	B	553	GLN
1	B	581	GLN
1	B	607	ASN
1	B	618	ASN
1	B	629	ASN
1	B	633	ASN
1	B	639	ASN
1	B	655	ASN
1	B	730	ASN
1	B	747	ASN
1	B	758	ASN
1	B	759	GLN
1	B	761	GLN

*Continued on next page...*

*Continued from previous page...*

Mol	Chain	Res	Type
1	B	789	ASN
1	B	794	GLN
1	C	323	ASN
1	C	351	HIS
1	C	368	GLN
1	C	438	ASN
1	C	507	GLN
1	C	518	ASN
1	C	553	GLN
1	C	581	GLN
1	C	618	ASN
1	C	629	ASN
1	C	633	ASN
1	C	639	ASN
1	C	655	ASN
1	C	714	GLN
1	C	758	ASN
1	C	759	GLN
1	C	761	GLN
1	C	781	ASN
1	C	789	ASN
1	C	794	GLN
2	D	8	GLN
2	D	42	ASN
2	E	8	GLN
2	F	8	GLN

### 5.3.3 RNA ⓘ

There are no RNA molecules in this entry.

### 5.4 Non-standard residues in protein, DNA, RNA chains ⓘ

There are no non-standard protein/DNA/RNA residues in this entry.

### 5.5 Carbohydrates ⓘ

There are no carbohydrates in this entry.

## 5.6 Ligand geometry

Of 12 ligands modelled in this entry, 9 are monoatomic - leaving 3 for Mogul analysis.

In the following table, the Counts columns list the number of bonds (or angles) for which Mogul statistics could be retrieved, the number of bonds (or angles) that are observed in the model and the number of bonds (or angles) that are defined in the chemical component dictionary. The Link column lists molecule types, if any, to which the group is linked. The Z score for a bond length (or angle) is the number of standard deviations the observed value is removed from the expected value. A bond length (or angle) with  $|Z| > 2$  is considered an outlier worth inspection. RMSZ is the root-mean-square of all Z scores of the bond lengths (or angles).

Mol	Type	Chain	Res	Link	Bond lengths			Bond angles		
					Counts	RMSZ	# $ Z  > 2$	Counts	RMSZ	# $ Z  > 2$
5	EMA	A	1999	4	20,27,27	3.59	4 (20%)	21,41,41	2.89	6 (28%)
5	EMA	B	2999	4	20,27,27	3.39	6 (30%)	21,41,41	2.92	3 (14%)
5	EMA	C	3999	4	20,27,27	3.96	9 (45%)	21,41,41	3.03	5 (23%)

In the following table, the Chirals column lists the number of chiral outliers, the number of chiral centers analysed, the number of these observed in the model and the number defined in the chemical component dictionary. Similar counts are reported in the Torsion and Rings columns. '-' means no outliers of that kind were identified.

Mol	Type	Chain	Res	Link	Chirals	Torsions	Rings
5	EMA	A	1999	4	-	0/16/20/20	0/2/2/2
5	EMA	B	2999	4	-	0/16/20/20	0/2/2/2
5	EMA	C	3999	4	-	0/16/20/20	0/2/2/2

All (19) bond length outliers are listed below:

Mol	Chain	Res	Type	Atoms	Z	Observed(Å)	Ideal(Å)
5	C	3999	EMA	PA-C5'	-14.61	1.60	1.79
5	A	1999	EMA	PA-C5'	-14.56	1.61	1.79
5	B	2999	EMA	PA-C5'	-13.28	1.62	1.79
5	C	3999	EMA	PA-O2A	-2.99	1.49	1.56
5	A	1999	EMA	PA-O2A	-2.87	1.49	1.56
5	B	2999	EMA	PA-O2A	-2.27	1.50	1.56
5	C	3999	EMA	PG-O1G	-2.22	1.46	1.54
5	C	3999	EMA	C5-C4	-2.17	1.35	1.40
5	A	1999	EMA	PG-O1G	-2.16	1.47	1.54
5	B	2999	EMA	PG-O1G	-2.06	1.47	1.54
5	C	3999	EMA	C2-N3	2.06	1.35	1.32
5	A	1999	EMA	C2-N3	2.58	1.36	1.32
5	C	3999	EMA	O5'-C4'	2.72	1.53	1.42
5	B	2999	EMA	C4-N3	2.81	1.39	1.35

*Continued on next page...*

*Continued from previous page...*

Mol	Chain	Res	Type	Atoms	Z	Observed(Å)	Ideal(Å)
5	B	2999	EMA	C2-N3	2.84	1.37	1.32
5	C	3999	EMA	C1'-N9	2.91	1.57	1.50
5	B	2999	EMA	C1'-C4'	3.23	1.57	1.51
5	C	3999	EMA	C4-N3	4.40	1.42	1.35
5	C	3999	EMA	C1'-C4'	4.86	1.61	1.51

All (14) bond angle outliers are listed below:

Mol	Chain	Res	Type	Atoms	Z	Observed(°)	Ideal(°)
5	A	1999	EMA	N3-C2-N1	-3.39	126.30	128.89
5	C	3999	EMA	N3-C2-N1	-2.44	127.03	128.89
5	A	1999	EMA	O2A-PA-C5'	2.05	112.30	105.90
5	B	2999	EMA	O2A-PA-O1A	2.19	117.01	110.12
5	C	3999	EMA	C1'-N9-C8	2.23	138.69	126.12
5	A	1999	EMA	O2A-PA-O1A	2.46	117.86	110.12
5	C	3999	EMA	O2A-PA-O1A	2.83	119.01	110.12
5	A	1999	EMA	C4-C5-N7	3.93	113.09	109.48
5	C	3999	EMA	O5'-C4'-C1'	4.28	115.60	108.62
5	A	1999	EMA	O5'-C4'-C1'	6.76	119.65	108.62
5	B	2999	EMA	O5'-C4'-C1'	6.84	119.78	108.62
5	A	1999	EMA	C4'-C1'-N9	8.54	123.52	110.94
5	B	2999	EMA	C4'-C1'-N9	10.01	125.69	110.94
5	C	3999	EMA	C4'-C1'-N9	11.76	128.28	110.94

There are no chirality outliers.

There are no torsion outliers.

There are no ring outliers.

3 monomers are involved in 13 short contacts:

Mol	Chain	Res	Type	Clashes	Symm-Clashes
5	A	1999	EMA	1	0
5	B	2999	EMA	5	0
5	C	3999	EMA	7	0

## 5.7 Other polymers ⓘ

There are no such residues in this entry.

## 5.8 Polymer linkage issues ⓘ

There are no chain breaks in this entry.



## 6 Fit of model and data

### 6.1 Protein, DNA and RNA chains

In the following table, the column labelled ‘#RSRZ> 2’ contains the number (and percentage) of RSRZ outliers, followed by percent RSRZ outliers for the chain as percentile scores relative to all X-ray entries and entries of similar resolution. The OWAB column contains the minimum, median, 95<sup>th</sup> percentile and maximum values of the occupancy-weighted average B-factor per residue. The column labelled ‘Q< 0.9’ lists the number of (and percentage) of residues with an average occupancy less than 0.9.

Mol	Chain	Analysed	<RSRZ>	#RSRZ>2		OWAB(Å <sup>2</sup> )	Q<0.9
1	A	484/507 (95%)	-0.15	12 (2%)	61 54	11, 51, 126, 154	16 (3%)
1	B	462/507 (91%)	0.05	18 (3%)	43 36	13, 54, 141, 149	12 (2%)
1	C	491/507 (96%)	-0.09	15 (3%)	52 46	12, 53, 129, 152	19 (3%)
2	D	143/147 (97%)	0.74	28 (19%)	1 1	34, 123, 158, 160	0
2	E	143/147 (97%)	0.72	24 (16%)	2 2	36, 130, 158, 160	0
2	F	143/147 (97%)	0.69	23 (16%)	3 2	37, 128, 157, 159	0
All	All	1866/1962 (95%)	0.11	120 (6%)	23 19	11, 58, 150, 160	47 (2%)

All (120) RSRZ outliers are listed below:

Mol	Chain	Res	Type	RSRZ
1	A	693	SER	13.8
1	B	697	ILE	8.5
1	B	773	PHE	6.6
2	D	24	ASP	5.6
2	D	79	THR	5.6
2	F	62	THR	5.6
2	F	73	ALA	5.3
1	C	783	THR	5.2
2	D	57	ALA	5.2
2	D	77	LYS	5.0
2	D	78	ASP	4.9
2	F	24	ASP	4.8
2	E	21	LYS	4.7
2	F	29	THR	4.7
1	A	694	VAL	4.6
1	B	785	ASN	4.4
2	D	43	PRO	4.3
2	E	19	PHE	4.3
1	A	784	GLU	4.3

*Continued on next page...*

*Continued from previous page...*

Mol	Chain	Res	Type	RSRZ
2	D	48	LEU	4.2
2	D	53	ASN	4.2
1	A	783	THR	4.2
2	D	56	ASP	4.1
1	C	675	ASN	4.1
1	B	786	GLU	4.0
2	F	46	ALA	4.0
1	C	785	ASN	4.0
1	C	689	ALA	3.9
1	C	786	GLU	3.8
1	B	711	ILE	3.8
2	E	51	MET	3.7
1	B	747	ASN	3.7
2	F	61	GLY	3.7
1	B	765	THR	3.7
1	A	737	LYS	3.6
1	C	741	ILE	3.6
2	E	77	LYS	3.6
2	D	73	ALA	3.5
2	E	24	ASP	3.5
2	E	55	VAL	3.5
1	B	740	GLN	3.4
2	E	76	MET	3.4
2	E	58	ASP	3.3
2	E	73	ALA	3.3
2	E	59	GLY	3.2
2	E	42	ASN	3.2
2	F	77	LYS	3.2
1	B	783	THR	3.2
2	D	76	MET	3.1
2	D	52	ILE	3.1
1	C	518	ASN	3.1
2	F	80	ASP	3.1
1	C	784	GLU	3.1
2	F	21	LYS	3.0
1	B	751	TYR	3.0
2	D	51	MET	3.0
1	A	787	THR	3.0
1	C	692	GLU	3.0
2	E	48	LEU	2.9
2	F	51	MET	2.9
2	F	30	LYS	2.9

*Continued on next page...*

*Continued from previous page...*

Mol	Chain	Res	Type	RSRZ
2	E	57	ALA	2.8
2	F	44	THR	2.8
2	D	66	PRO	2.8
2	F	53	ASN	2.8
1	B	787	THR	2.8
1	C	779	GLN	2.8
1	C	787	THR	2.8
2	F	74	ARG	2.7
2	F	57	ALA	2.7
1	A	798	ASP	2.7
2	F	59	GLY	2.7
1	B	705	TYR	2.7
2	D	49	GLN	2.7
1	A	429	GLY	2.7
1	A	779	GLN	2.7
1	C	707	SER	2.7
2	E	69	LEU	2.6
2	D	50	ASP	2.6
2	F	78	ASP	2.6
2	E	147	ALA	2.6
1	C	688	PHE	2.5
1	B	782	PHE	2.5
2	E	53	ASN	2.5
2	E	116	LEU	2.5
2	F	20	ASP	2.5
2	F	43	PRO	2.4
2	E	80	ASP	2.4
2	F	147	ALA	2.3
2	D	58	ASP	2.3
1	B	766	HIS	2.3
1	B	702	SER	2.3
2	D	45	GLU	2.3
2	D	55	VAL	2.2
2	E	29	THR	2.2
2	F	70	THR	2.2
2	F	19	PHE	2.2
2	E	72	MET	2.2
2	D	60	ASN	2.2
2	D	30	LYS	2.2
2	D	42	ASN	2.2
2	D	28	THR	2.2
1	A	741	ILE	2.2

*Continued on next page...*

*Continued from previous page...*

Mol	Chain	Res	Type	RSRZ
1	C	520	PRO	2.2
1	A	292	ARG	2.2
2	E	54	GLU	2.1
1	B	518	ASN	2.1
1	A	695	LYS	2.1
2	E	78	ASP	2.1
1	B	779	GLN	2.1
1	C	740	GLN	2.1
1	B	784	GLU	2.1
2	F	115	LYS	2.1
2	E	113	GLY	2.1
2	D	21	LYS	2.1
2	D	62	THR	2.1
2	D	74	ARG	2.0
2	D	80	ASP	2.0
2	E	44	THR	2.0
2	D	16	PHE	2.0

## 6.2 Non-standard residues in protein, DNA, RNA chains [i](#)

There are no non-standard protein/DNA/RNA residues in this entry.

## 6.3 Carbohydrates [i](#)

There are no carbohydrates in this entry.

## 6.4 Ligands [i](#)

In the following table, the Atoms column lists the number of modelled atoms in the group and the number defined in the chemical component dictionary. LLDF column lists the quality of electron density of the group with respect to its neighbouring residues in protein, DNA or RNA chains. The B-factors column lists the minimum, median, 95<sup>th</sup> percentile and maximum values of B factors of atoms in the group. The column labelled 'Q< 0.9' lists the number of atoms with occupancy less than 0.9.

Mol	Type	Chain	Res	Atoms	RSCC	RSR	LLDF	B-factors( $\text{\AA}^2$ )	Q<0.9
5	EMA	C	3999	26/26	0.88	0.25	1.89	46,63,71,72	0
5	EMA	B	2999	26/26	0.88	0.25	1.48	43,55,60,63	0
5	EMA	A	1999	26/26	0.94	0.19	0.01	29,37,41,41	0
3	CA	E	803	1/1	0.99	0.05	-1.88	47,47,47,47	0

*Continued on next page...*

*Continued from previous page...*

Mol	Type	Chain	Res	Atoms	RSCC	RSR	LLDF	B-factors( $\text{\AA}^2$ )	Q<0.9
3	CA	F	804	1/1	0.95	0.08	-1.96	44,44,44,44	0
3	CA	D	800	1/1	0.98	0.09	-2.41	30,30,30,30	0
3	CA	D	801	1/1	0.99	0.04	-2.99	37,37,37,37	0
3	CA	F	805	1/1	0.97	0.04	-3.61	48,48,48,48	0
3	CA	E	802	1/1	0.97	0.08	-4.04	83,83,83,83	0
4	YB	B	902	1/1	0.98	0.06	-	82,82,82,82	0
4	YB	C	903	1/1	0.99	0.05	-	86,86,86,86	0
4	YB	A	901	1/1	0.99	0.06	-	77,77,77,77	0

## 6.5 Other polymers [i](#)

There are no such residues in this entry.