



Full wwPDB X-ray Structure Validation Report ⓘ

Feb 1, 2016 – 07:40 PM GMT

PDB ID : 4PNI
Title : Bovine G protein-coupled receptor kinase 1 in complex with GSK2163632A
Authors : Homan, K.T.; Tesmer, J.J.G.
Deposited on : 2014-05-23
Resolution : 1.85 Å(reported)

This is a Full wwPDB X-ray Structure Validation Report for a publicly released PDB entry.
We welcome your comments at validation@mail.wwpdb.org
A user guide is available at
<http://wwpdb.org/validation/2016/XrayValidationReportHelp>
with specific help available everywhere you see the ⓘ symbol.

The following versions of software and data (see [references ⓘ](#)) were used in the production of this report:

MolProbity : 4.02b-467
Mogul : 1.7 (RC4), CSD as536be (2015)
Xtriage (Phenix) : 1.9-1692
EDS : rb-20026688
Percentile statistics : 20151230.v01 (using entries in the PDB archive December 30th 2015)
Refmac : 5.8.0135
CCP4 : 6.5.0
Ideal geometry (proteins) : Engh & Huber (2001)
Ideal geometry (DNA, RNA) : Parkinson et al. (1996)
Validation Pipeline (wwPDB-VP) : trunk26865

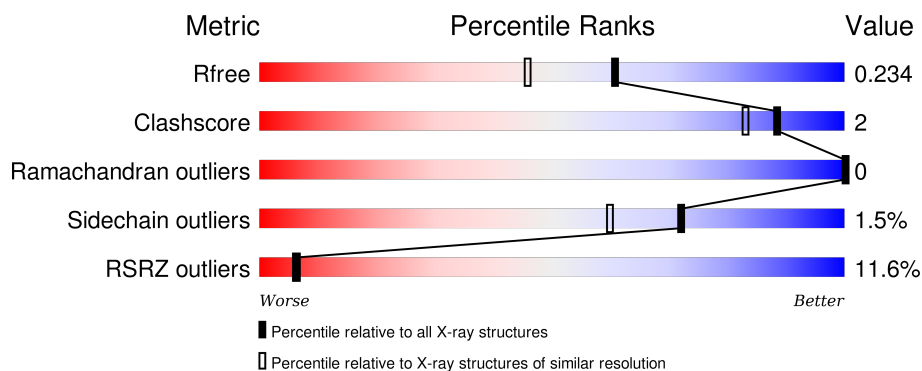
1 Overall quality at a glance

The following experimental techniques were used to determine the structure:

X-RAY DIFFRACTION

The reported resolution of this entry is 1.85 Å.

Percentile scores (ranging between 0-100) for global validation metrics of the entry are shown in the following graphic. The table shows the number of entries on which the scores are based.



Metric	Whole archive (#Entries)	Similar resolution (#Entries, resolution range(Å))
R_{free}	91344	1745 (1.86-1.86)
Clashscore	102246	1898 (1.86-1.86)
Ramachandran outliers	100387	1875 (1.86-1.86)
Sidechain outliers	100360	1875 (1.86-1.86)
RSRZ outliers	91569	1747 (1.86-1.86)

The table below summarises the geometric issues observed across the polymeric chains and their fit to the electron density. The red, orange, yellow and green segments on the lower bar indicate the fraction of residues that contain outliers for ≥ 3 , 2, 1 and 0 types of geometric quality criteria. A grey segment represents the fraction of residues that are not modelled. The numeric value for each fraction is indicated below the corresponding segment, with a dot representing fractions $\leq 5\%$. The upper red bar (where present) indicates the fraction of residues that have poor fit to the electron density. The numeric value is given above the bar.

Mol	Chain	Length	Quality of chain
1	A	561	

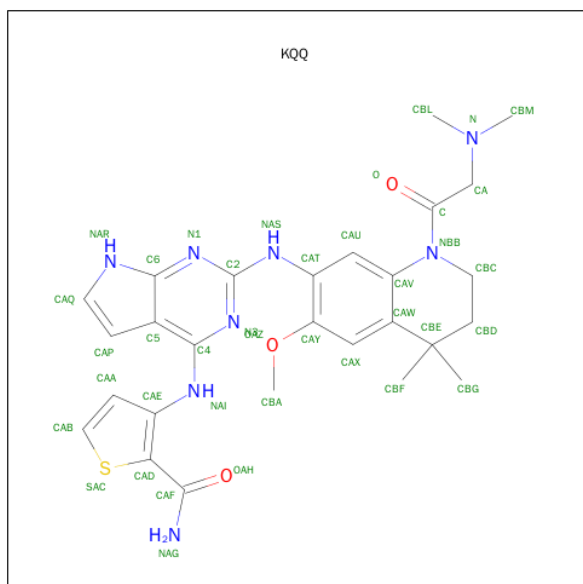
i

In the tables below, the ZeroOcc column contains the number of atoms modelled with zero occupancy, the AltConf column contains the number of residues with at least one atom in alternate conformation and the Trace column contains the number of residues modelled with at most 2 atoms.

- Molecule 1 is a protein called Rhodopsin kinase.

Mol	Chain	Residues	Atoms					ZeroOcc	AltConf	Trace
1	A	492	Total	C	N	O	S	0	4	0
			3985	2553	688	725	19			

- Molecule 2 is 3-[(2-{[1-(N,N-dimethylglycyl)-6-methoxy-4,4-dimethyl-1,2,3,4-tetrahydroquinolin-7-yl]amino}-7H-pyrrolo[2,3-d]pyrimidin-4-yl)amino]thiophene-2-carboxamide (three-letter code: KQQ) (formula: $C_{27}H_{32}N_8O_3S$).



Mol	Chain	Residues	Atoms					ZeroOcc	AltConf
2	A	1	Total	C	N	O	S	0	0
			39	27	8	3	1		

- Molecule 3 is CHLORIDE ION (three-letter code: CL) (formula: Cl).

Mol	Chain	Residues	Atoms	ZeroOcc	AltConf
3	A	6	Total Cl 6 6	0	0

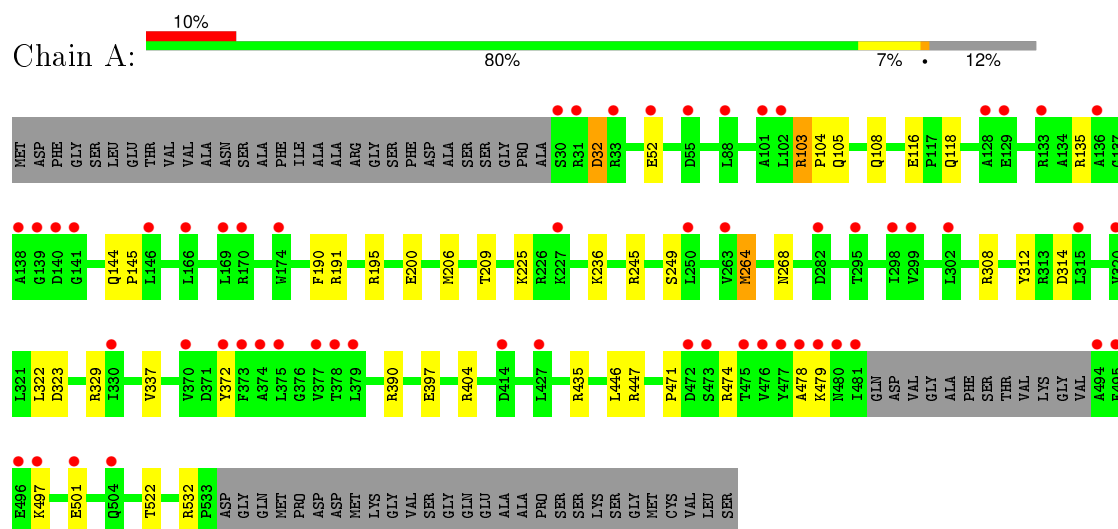
- Molecule 4 is water.

Mol	Chain	Residues	Atoms		ZeroOcc	AltConf
4	A	218	Total 218	O 218	0	0

3 Residue-property plots [i](#)

These plots are drawn for all protein, RNA and DNA chains in the entry. The first graphic for a chain summarises the proportions of errors displayed in the second graphic. The second graphic shows the sequence view annotated by issues in geometry and electron density. Residues are color-coded according to the number of geometric quality criteria for which they contain at least one outlier: green = 0, yellow = 1, orange = 2 and red = 3 or more. A red dot above a residue indicates a poor fit to the electron density ($RSRZ > 2$). Stretches of 2 or more consecutive residues without any outlier are shown as a green connector. Residues present in the sample, but not in the model, are shown in grey.

- Molecule 1: Rhodopsin kinase



4 Data and refinement statistics

Property	Value	Source
Space group	P 2 21 21	Depositor
Cell constants a, b, c, α , β , γ	45.48 Å 66.57 Å 205.50 Å 90.00° 90.00° 90.00°	Depositor
Resolution (Å)	24.67 – 1.85 24.67 – 1.85	Depositor EDS
% Data completeness (in resolution range)	99.7 (24.67-1.85) 99.8 (24.67-1.85)	Depositor EDS
R_{merge}	(Not available)	Depositor
R_{sym}	0.10	Depositor
$\langle I/\sigma(I) \rangle$ ¹	2.13 (at 1.85 Å)	Xtriage
Refinement program	REFMAC 5.7.0032	Depositor
R, R_{free}	0.188 , 0.230 0.196 , 0.234	Depositor DCC
R_{free} test set	2753 reflections (5.35%)	DCC
Wilson B-factor (Å ²)	39.8	Xtriage
Anisotropy	0.048	Xtriage
Bulk solvent k_{sol} (e/Å ³), B_{sol} (Å ²)	0.36 , 48.3	EDS
Estimated twinning fraction	No twinning to report.	Xtriage
L-test for twinning ²	$\langle L \rangle = 0.49$, $\langle L^2 \rangle = 0.32$	Xtriage
Outliers	0 of 54323 reflections	Xtriage
F_o, F_c correlation	0.97	EDS
Total number of atoms	4248	wwPDB-VP
Average B, all atoms (Å ²)	48.0	wwPDB-VP

Xtriage's analysis on translational NCS is as follows: *The largest off-origin peak in the Patterson function is 6.37% of the height of the origin peak. No significant pseudotranslation is detected.*

¹Intensities estimated from amplitudes.

²Theoretical values of $\langle |L| \rangle$, $\langle L^2 \rangle$ for acentric reflections are 0.5, 0.375 respectively for untwinned datasets, and 0.333, 0.2 for perfectly twinned datasets.

5 Model quality

5.1 Standard geometry

Bond lengths and bond angles in the following residue types are not validated in this section: KQQ, CL

The Z score for a bond length (or angle) is the number of standard deviations the observed value is removed from the expected value. A bond length (or angle) with $|Z| > 5$ is considered an outlier worth inspection. RMSZ is the root-mean-square of all Z scores of the bond lengths (or angles).

Mol	Chain	Bond lengths		Bond angles	
		RMSZ	$\# Z > 5$	RMSZ	$\# Z > 5$
1	A	1.01	2/4079 (0.0%)	1.04	20/5502 (0.4%)

All (2) bond length outliers are listed below:

Mol	Chain	Res	Type	Atoms	Z	Observed(Å)	Ideal(Å)
1	A	372	TYR	CE1-CZ	5.40	1.45	1.38
1	A	312	TYR	CE2-CZ	-5.10	1.31	1.38

All (20) bond angle outliers are listed below:

Mol	Chain	Res	Type	Atoms	Z	Observed(°)	Ideal(°)
1	A	264	MET	CG-SD-CE	-10.03	84.15	100.20
1	A	245	ARG	NE-CZ-NH1	9.70	125.15	120.30
1	A	337	VAL	CB-CA-C	-7.60	96.96	111.40
1	A	329	ARG	NE-CZ-NH1	7.15	123.88	120.30
1	A	404	ARG	NE-CZ-NH1	6.75	123.68	120.30
1	A	390	ARG	NE-CZ-NH1	6.67	123.64	120.30
1	A	447	ARG	NE-CZ-NH1	6.28	123.44	120.30
1	A	329	ARG	NE-CZ-NH2	-6.25	117.17	120.30
1	A	312	TYR	CB-CG-CD1	6.13	124.68	121.00
1	A	314	ASP	CB-CG-OD1	6.04	123.74	118.30
1	A	474	ARG	NE-CZ-NH2	-6.00	117.30	120.30
1	A	245	ARG	NE-CZ-NH2	-5.80	117.40	120.30
1	A	474	ARG	NE-CZ-NH1	5.65	123.12	120.30
1	A	404	ARG	NE-CZ-NH2	-5.40	117.60	120.30
1	A	323	ASP	CB-CG-OD1	5.24	123.01	118.30
1	A	308	ARG	NE-CZ-NH1	5.13	122.87	120.30
1	A	103	ARG	NE-CZ-NH1	5.08	122.84	120.30
1	A	103	ARG	NE-CZ-NH2	-5.08	117.76	120.30
1	A	268	ASN	CB-CA-C	-5.06	100.27	110.40

Continued on next page...

Continued from previous page...

Mol	Chain	Res	Type	Atoms	Z	Observed(°)	Ideal(°)
1	A	435	ARG	NE-CZ-NH1	5.06	122.83	120.30

There are no chirality outliers.

There are no planarity outliers.

5.2 Too-close contacts ⓘ

In the following table, the Non-H and H(model) columns list the number of non-hydrogen atoms and hydrogen atoms in the chain respectively. The H(added) column lists the number of hydrogen atoms added and optimized by MolProbity. The Clashes column lists the number of clashes within the asymmetric unit, whereas Symm-Clashes lists symmetry related clashes.

Mol	Chain	Non-H	H(model)	H(added)	Clashes	Symm-Clashes
1	A	3985	0	3941	19	0
2	A	39	0	32	1	0
3	A	6	0	0	0	0
4	A	218	0	0	3	1
All	All	4248	0	3973	20	1

The all-atom clashscore is defined as the number of clashes found per 1000 atoms (including hydrogen atoms). The all-atom clashscore for this structure is 2.

All (20) close contacts within the same asymmetric unit are listed below, sorted by their clash magnitude.

Atom-1	Atom-2	Interatomic distance (Å)	Clash overlap (Å)
1:A:105:GLN:HB3	4:A:804:HOH:O	2.05	0.55
1:A:190:PHE:O	1:A:191:ARG:HG3	2.11	0.49
1:A:118:GLN:HB2	4:A:863:HOH:O	2.13	0.49
1:A:52:GLU:HA	1:A:52:GLU:OE1	2.13	0.48
1:A:497:LYS:O	1:A:501:GLU:HG2	2.13	0.47
1:A:116:GLU:HG2	1:A:135:ARG:NH2	2.31	0.46
1:A:249[A]:SER:O	1:A:264:MET:HB2	2.16	0.46
1:A:322:LEU:HD21	1:A:471:PRO:HG3	1.98	0.45
1:A:32:ASP:OD1	1:A:32:ASP:C	2.55	0.45
1:A:532:ARG:NH1	4:A:702:HOH:O	2.46	0.45
1:A:446:LEU:HD23	1:A:446:LEU:C	2.37	0.45
2:A:601:KQQ:H2O	2:A:601:KQQ:O	2.18	0.43
1:A:195:ARG:NH1	1:A:200:GLU:OE2	2.51	0.43
1:A:144:GLN:N	1:A:145:PRO:CD	2.82	0.43
1:A:103:ARG:N	1:A:104:PRO:CD	2.80	0.43

Continued on next page...

Continued from previous page...

Atom-1	Atom-2	Interatomic distance (Å)	Clash overlap (Å)
1:A:532:ARG:O	1:A:532:ARG:HG3	2.21	0.41
1:A:191:ARG:HB3	1:A:478:ALA:HB1	2.01	0.41
1:A:249[A]:SER:O	1:A:264:MET:CB	2.69	0.40
1:A:397:GLU:N	1:A:397:GLU:OE1	2.53	0.40
1:A:209:THR:HB	1:A:522:THR:HG21	2.02	0.40

All (1) symmetry-related close contacts are listed below. The label for Atom-2 includes the symmetry operator and encoded unit-cell translations to be applied.

Atom-1	Atom-2	Interatomic distance (Å)	Clash overlap (Å)
4:A:722:HOH:O	4:A:722:HOH:O[2_565]	2.16	0.04

5.3 Torsion angles ⓘ

5.3.1 Protein backbone ⓘ

In the following table, the Percentiles column shows the percent Ramachandran outliers of the chain as a percentile score with respect to all X-ray entries followed by that with respect to entries of similar resolution.

The Analysed column shows the number of residues for which the backbone conformation was analysed, and the total number of residues.

Mol	Chain	Analysed	Favoured	Allowed	Outliers	Percentiles	
1	A	492/561 (88%)	480 (98%)	12 (2%)	0	100	100

There are no Ramachandran outliers to report.

5.3.2 Protein sidechains ⓘ

In the following table, the Percentiles column shows the percent sidechain outliers of the chain as a percentile score with respect to all X-ray entries followed by that with respect to entries of similar resolution.

The Analysed column shows the number of residues for which the sidechain conformation was analysed, and the total number of residues.

Mol	Chain	Analysed	Rotameric	Outliers	Percentiles	
1	A	415/462 (90%)	409 (99%)	6 (1%)	74	63

All (6) residues with a non-rotameric sidechain are listed below:

Mol	Chain	Res	Type
1	A	32	ASP
1	A	108	GLN
1	A	206	MET
1	A	225	LYS
1	A	236	LYS
1	A	479	LYS

Some sidechains can be flipped to improve hydrogen bonding and reduce clashes. All (2) such sidechains are listed below:

Mol	Chain	Res	Type
1	A	87	GLN
1	A	278	ASN

5.3.3 RNA [i](#)

There are no RNA molecules in this entry.

5.4 Non-standard residues in protein, DNA, RNA chains [i](#)

There are no non-standard protein/DNA/RNA residues in this entry.

5.5 Carbohydrates [i](#)

There are no carbohydrates in this entry.

5.6 Ligand geometry [i](#)

Of 7 ligands modelled in this entry, 6 are monoatomic - leaving 1 for Mogul analysis.

In the following table, the Counts columns list the number of bonds (or angles) for which Mogul statistics could be retrieved, the number of bonds (or angles) that are observed in the model and the number of bonds (or angles) that are defined in the chemical component dictionary. The Link column lists molecule types, if any, to which the group is linked. The Z score for a bond length (or angle) is the number of standard deviations the observed value is removed from the expected value. A bond length (or angle) with $|Z| > 2$ is considered an outlier worth inspection. RMSZ is the root-mean-square of all Z scores of the bond lengths (or angles).

Mol	Type	Chain	Res	Link	Bond lengths			Bond angles		
					Counts	RMSZ	# Z > 2	Counts	RMSZ	# Z > 2
2	KQQ	A	601	-	38,43,43	0.95	3 (7%)	43,64,64	1.85	12 (27%)

In the following table, the Chirals column lists the number of chiral outliers, the number of chiral centers analysed, the number of these observed in the model and the number defined in the chemical component dictionary. Similar counts are reported in the Torsion and Rings columns. '-' means no outliers of that kind were identified.

Mol	Type	Chain	Res	Link	Chirals	Torsions	Rings
2	KQQ	A	601	-	-	0/16/38/38	0/5/5/5

All (3) bond length outliers are listed below:

Mol	Chain	Res	Type	Atoms	Z	Observed(Å)	Ideal(Å)
2	A	601	KQQ	CAX-CAW	-2.14	1.36	1.39
2	A	601	KQQ	CAV-NBB	-2.03	1.37	1.41
2	A	601	KQQ	O-C	2.01	1.27	1.23

All (12) bond angle outliers are listed below:

Mol	Chain	Res	Type	Atoms	Z	Observed(°)	Ideal(°)
2	A	601	KQQ	N1-C2-N3	-3.57	120.74	126.22
2	A	601	KQQ	CBF-CBE-CAW	-3.21	104.60	110.08
2	A	601	KQQ	C5-C4-N3	-2.52	116.87	121.93
2	A	601	KQQ	C-CA-N	-2.18	106.64	112.39
2	A	601	KQQ	NAS-C2-N3	2.19	123.56	116.91
2	A	601	KQQ	CAW-CAV-NBB	2.25	122.11	120.24
2	A	601	KQQ	C2-N1-C6	2.39	117.97	115.09
2	A	601	KQQ	C5-C4-NAI	2.47	121.78	119.63
2	A	601	KQQ	CAU-CAT-NAS	2.87	127.49	121.31
2	A	601	KQQ	CBL-N-CA	2.98	117.33	110.67
2	A	601	KQQ	C2-N3-C4	4.06	125.25	116.92
2	A	601	KQQ	CBA-OAZ-CAY	5.21	125.45	117.54

There are no chirality outliers.

There are no torsion outliers.

There are no ring outliers.

1 monomer is involved in 1 short contact:

Mol	Chain	Res	Type	Clashes	Symm-Clashes
2	A	601	KQQ	1	0

5.7 Other polymers

There are no such residues in this entry.

5.8 Polymer linkage issues

There are no chain breaks in this entry.

6 Fit of model and data ⓘ

6.1 Protein, DNA and RNA chains ⓘ

In the following table, the column labelled ‘#RSRZ> 2’ contains the number (and percentage) of RSRZ outliers, followed by percent RSRZ outliers for the chain as percentile scores relative to all X-ray entries and entries of similar resolution. The OWAB column contains the minimum, median, 95th percentile and maximum values of the occupancy-weighted average B-factor per residue. The column labelled ‘Q< 0.9’ lists the number of (and percentage) of residues with an average occupancy less than 0.9.

Mol	Chain	Analysed	<RSRZ>	#RSRZ>2	OWAB(Å ²)	Q<0.9
1	A	492/561 (87%)	0.48	57 (11%) 6 6	26, 46, 78, 101	0

All (57) RSRZ outliers are listed below:

Mol	Chain	Res	Type	RSRZ
1	A	481	ILE	5.8
1	A	477	TYR	5.5
1	A	480	ASN	5.3
1	A	494	ALA	5.3
1	A	375	LEU	4.8
1	A	166	LEU	4.4
1	A	138	ALA	4.2
1	A	476	VAL	4.0
1	A	140	ASP	3.9
1	A	298	ILE	3.8
1	A	141	GLY	3.8
1	A	30	SER	3.8
1	A	475	THR	3.8
1	A	427	LEU	3.6
1	A	33	ARG	3.6
1	A	374	ALA	3.5
1	A	373	PHE	3.5
1	A	495	PHE	3.5
1	A	370	VAL	3.4
1	A	497	LYS	3.3
1	A	372	TYR	3.3
1	A	478	ALA	3.3
1	A	139	GLY	3.2
1	A	479	LYS	3.1
1	A	496	GLU	3.1
1	A	473	SER	2.9
1	A	377	VAL	2.9

Continued on next page...

Continued from previous page...

Mol	Chain	Res	Type	RSRZ
1	A	101	ALA	2.8
1	A	136	ALA	2.8
1	A	414	ASP	2.7
1	A	55	ASP	2.7
1	A	302	LEU	2.6
1	A	128	ALA	2.6
1	A	379	LEU	2.5
1	A	227	LYS	2.5
1	A	282	ASP	2.5
1	A	31	ARG	2.5
1	A	146	LEU	2.5
1	A	263	VAL	2.5
1	A	52	GLU	2.4
1	A	174	TRP	2.4
1	A	378	THR	2.4
1	A	320	VAL	2.4
1	A	504	GLN	2.4
1	A	315	LEU	2.3
1	A	472[A]	ASP	2.3
1	A	250	LEU	2.3
1	A	295	THR	2.2
1	A	299	VAL	2.2
1	A	133	ARG	2.2
1	A	169	LEU	2.1
1	A	88	LEU	2.1
1	A	129	GLU	2.1
1	A	330	ILE	2.1
1	A	170	ARG	2.1
1	A	102	LEU	2.0
1	A	501	GLU	2.0

6.2 Non-standard residues in protein, DNA, RNA chains ⓘ

There are no non-standard protein/DNA/RNA residues in this entry.

6.3 Carbohydrates ⓘ

There are no carbohydrates in this entry.

6.4 Ligands

In the following table, the Atoms column lists the number of modelled atoms in the group and the number defined in the chemical component dictionary. LLDF column lists the quality of electron density of the group with respect to its neighbouring residues in protein, DNA or RNA chains. The B-factors column lists the minimum, median, 95th percentile and maximum values of B factors of atoms in the group. The column labelled 'Q< 0.9' lists the number of atoms with occupancy less than 0.9.

Mol	Type	Chain	Res	Atoms	RSCC	RSR	LLDF	B-factors(Å ²)	Q<0.9
3	CL	A	604	1/1	0.88	0.14	1.26	63,63,63,63	0
3	CL	A	602	1/1	0.99	0.15	-0.56	45,45,45,45	0
3	CL	A	603	1/1	0.98	0.08	-1.01	36,36,36,36	0
2	KQQ	A	601	39/39	0.97	0.07	-1.21	28,33,48,49	0
3	CL	A	606	1/1	0.98	0.06	-2.57	50,50,50,50	0
3	CL	A	605	1/1	0.78	0.10	-	67,67,67,67	0
3	CL	A	607	1/1	0.95	0.13	-	76,76,76,76	0

6.5 Other polymers

There are no such residues in this entry.