



Full wwPDB X-ray Structure Validation Report ⓘ

Sep 15, 2016 – 05:54 PM EDT

PDB ID : 3PR8
Title : Structure of Glutathione S-transferase(PP0183) from *Pseudomonas putida* in complex with GSH
Authors : Ramagopal, U.A.; Toro, R.; Burley, S.K.; Almo, S.C.; New York SGX Research Center for Structural Genomics (NYSGXRC)
Deposited on : 2010-11-29
Resolution : 1.80 Å(reported)

This is a Full wwPDB X-ray Structure Validation Report for a publicly released PDB entry.

We welcome your comments at validation@mail.wwpdb.org

A user guide is available at

<http://wwpdb.org/validation/2016/XrayValidationReportHelp>

with specific help available everywhere you see the ⓘ symbol.

The following versions of software and data (see [references ⓘ](#)) were used in the production of this report:

MolProbity : 4.02b-467
Mogul : 1.7.1 (RC1), CSD as537be (2016)
Xtriage (Phenix) : 1.9-1692
EDS : rb-20027939
Percentile statistics : 20151230.v01 (using entries in the PDB archive December 30th 2015)
Refmac : 5.8.0135
CCP4 : 6.5.0
Ideal geometry (proteins) : Engh & Huber (2001)
Ideal geometry (DNA, RNA) : Parkinson et al. (1996)
Validation Pipeline (wwPDB-VP) : rb-20027939

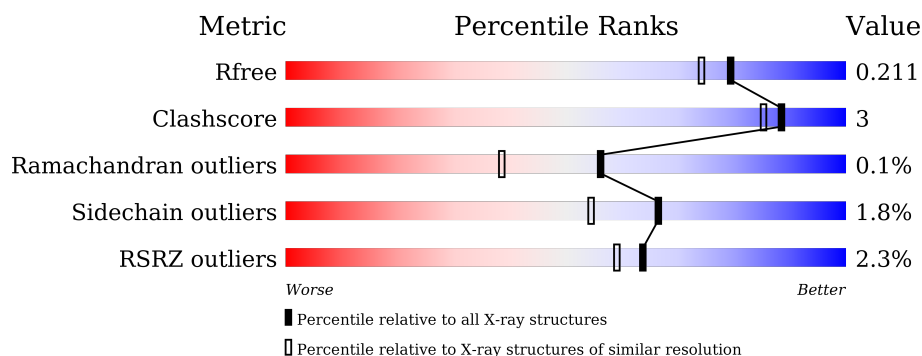
1 Overall quality at a glance

The following experimental techniques were used to determine the structure:

X-RAY DIFFRACTION

The reported resolution of this entry is 1.80 Å.

Percentile scores (ranging between 0-100) for global validation metrics of the entry are shown in the following graphic. The table shows the number of entries on which the scores are based.



Metric	Whole archive (#Entries)	Similar resolution (#Entries, resolution range(Å))
R_{free}	91344	4533 (1.80-1.80)
Clashscore	102246	5383 (1.80-1.80)
Ramachandran outliers	100387	5320 (1.80-1.80)
Sidechain outliers	100360	5319 (1.80-1.80)
RSRZ outliers	91569	4547 (1.80-1.80)

The table below summarises the geometric issues observed across the polymeric chains and their fit to the electron density. The red, orange, yellow and green segments on the lower bar indicate the fraction of residues that contain outliers for ≥ 3 , 2, 1 and 0 types of geometric quality criteria. A grey segment represents the fraction of residues that are not modelled. The numeric value for each fraction is indicated below the corresponding segment, with a dot representing fractions $\leq 5\%$. The upper red bar (where present) indicates the fraction of residues that have poor fit to the electron density. The numeric value is given above the bar.

Mol	Chain	Length	Quality of chain
1	A	229	<div> <div>2%</div> <div> <div></div> <div>88%</div> <div>7%</div> <div>5%</div> </div> </div>
1	B	229	<div> <div>2%</div> <div> <div></div> <div>87%</div> <div>7%</div> <div>5%</div> </div> </div>
1	C	229	<div> <div>2%</div> <div> <div></div> <div>88%</div> <div>7%</div> <div>5%</div> </div> </div>
1	D	229	<div> <div>3%</div> <div> <div></div> <div>89%</div> <div>6%</div> <div>5%</div> </div> </div>

2 Entry composition

There are 4 unique types of molecules in this entry. The entry contains 7696 atoms, of which 0 are hydrogens and 0 are deuteriums.

In the tables below, the ZeroOcc column contains the number of atoms modelled with zero occupancy, the AltConf column contains the number of residues with at least one atom in alternate conformation and the Trace column contains the number of residues modelled with at most 2 atoms.

- Molecule 1 is a protein called Glutathione S-transferase family protein.

Mol	Chain	Residues	Atoms						ZeroOcc	AltConf	Trace
1	A	218	Total	C	N	O	S	Se	0	5	0
			1726	1120	278	317	2	9			
1	B	217	Total	C	N	O	S	Se	0	9	0
			1757	1139	285	322	2	9			
1	C	218	Total	C	N	O	S	Se	0	5	0
			1732	1119	279	323	2	9			
1	D	218	Total	C	N	O	S	Se	0	7	0
			1747	1131	287	319	2	8			

There are 40 discrepancies between the modelled and reference sequences:

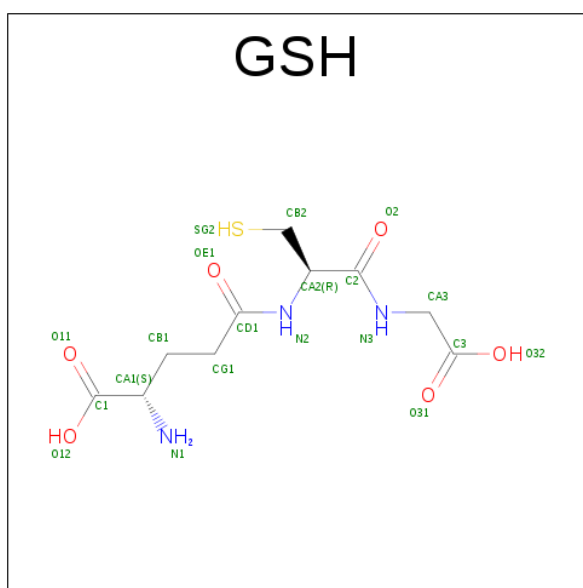
Chain	Residue	Modelled	Actual	Comment	Reference
A	1	MSE	-	EXPRESSION TAG	UNP Q88RE7
A	2	SER	-	EXPRESSION TAG	UNP Q88RE7
A	222	GLU	-	EXPRESSION TAG	UNP Q88RE7
A	223	GLY	-	EXPRESSION TAG	UNP Q88RE7
A	224	HIS	-	EXPRESSION TAG	UNP Q88RE7
A	225	HIS	-	EXPRESSION TAG	UNP Q88RE7
A	226	HIS	-	EXPRESSION TAG	UNP Q88RE7
A	227	HIS	-	EXPRESSION TAG	UNP Q88RE7
A	228	HIS	-	EXPRESSION TAG	UNP Q88RE7
A	229	HIS	-	EXPRESSION TAG	UNP Q88RE7
B	1	MSE	-	EXPRESSION TAG	UNP Q88RE7
B	2	SER	-	EXPRESSION TAG	UNP Q88RE7
B	222	GLU	-	EXPRESSION TAG	UNP Q88RE7
B	223	GLY	-	EXPRESSION TAG	UNP Q88RE7
B	224	HIS	-	EXPRESSION TAG	UNP Q88RE7
B	225	HIS	-	EXPRESSION TAG	UNP Q88RE7
B	226	HIS	-	EXPRESSION TAG	UNP Q88RE7
B	227	HIS	-	EXPRESSION TAG	UNP Q88RE7
B	228	HIS	-	EXPRESSION TAG	UNP Q88RE7
B	229	HIS	-	EXPRESSION TAG	UNP Q88RE7
C	1	MSE	-	EXPRESSION TAG	UNP Q88RE7

Continued on next page...

Continued from previous page...

Chain	Residue	Modelled	Actual	Comment	Reference
C	2	SER	-	EXPRESSION TAG	UNP Q88RE7
C	222	GLU	-	EXPRESSION TAG	UNP Q88RE7
C	223	GLY	-	EXPRESSION TAG	UNP Q88RE7
C	224	HIS	-	EXPRESSION TAG	UNP Q88RE7
C	225	HIS	-	EXPRESSION TAG	UNP Q88RE7
C	226	HIS	-	EXPRESSION TAG	UNP Q88RE7
C	227	HIS	-	EXPRESSION TAG	UNP Q88RE7
C	228	HIS	-	EXPRESSION TAG	UNP Q88RE7
C	229	HIS	-	EXPRESSION TAG	UNP Q88RE7
D	1	MSE	-	EXPRESSION TAG	UNP Q88RE7
D	2	SER	-	EXPRESSION TAG	UNP Q88RE7
D	222	GLU	-	EXPRESSION TAG	UNP Q88RE7
D	223	GLY	-	EXPRESSION TAG	UNP Q88RE7
D	224	HIS	-	EXPRESSION TAG	UNP Q88RE7
D	225	HIS	-	EXPRESSION TAG	UNP Q88RE7
D	226	HIS	-	EXPRESSION TAG	UNP Q88RE7
D	227	HIS	-	EXPRESSION TAG	UNP Q88RE7
D	228	HIS	-	EXPRESSION TAG	UNP Q88RE7
D	229	HIS	-	EXPRESSION TAG	UNP Q88RE7

- Molecule 2 is GLUTATHIONE (three-letter code: GSH) (formula: C₁₀H₁₇N₃O₆S).



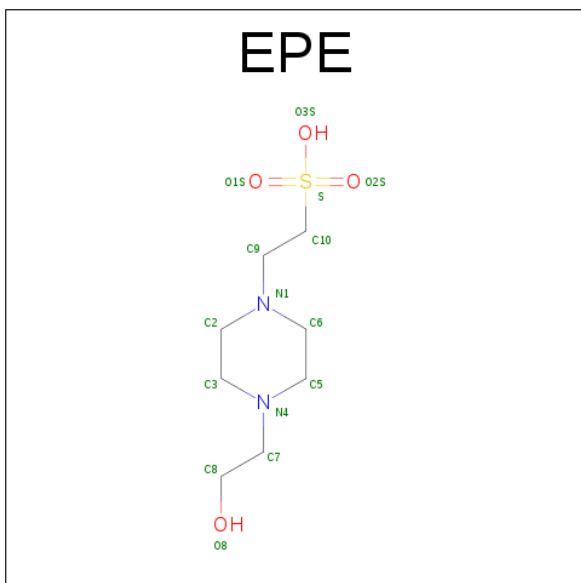
Mol	Chain	Residues	Atoms					ZeroOcc	AltConf
2	A	1	Total	C	N	O	S	0	0
			20	10	3	6	1		
2	B	1	Total	C	N	O	S	0	0
			20	10	3	6	1		

Continued on next page...

Continued from previous page...

Mol	Chain	Residues	Atoms					ZeroOcc	AltConf
2	C	1	Total	C	N	O	S	0	0
			20	10	3	6	1		
2	D	1	Total	C	N	O	S	0	0
			20	10	3	6	1		

- Molecule 3 is 4-(2-HYDROXYETHYL)-1-PIPERAZINE ETHANESULFONIC ACID (three-letter code: EPE) (formula: C₈H₁₈N₂O₄S).



Mol	Chain	Residues	Atoms					ZeroOcc	AltConf
3	B	1	Total	C	N	O	S	0	0
			15	8	2	4	1		

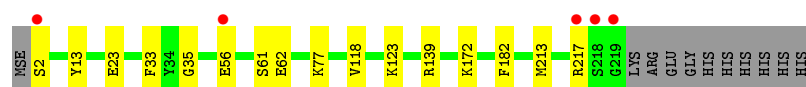
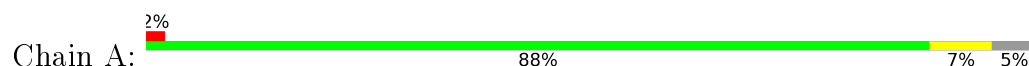
- Molecule 4 is water.

Mol	Chain	Residues	Atoms		ZeroOcc	AltConf
4	A	146	Total	O	0	0
			146	146		
4	B	182	Total	O	0	0
			182	182		
4	C	159	Total	O	0	0
			159	159		
4	D	152	Total	O	0	0
			152	152		

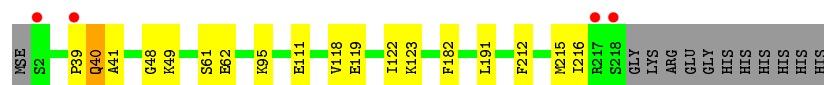
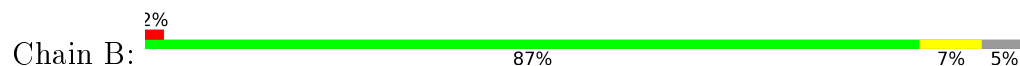
3 Residue-property plots [i](#)

These plots are drawn for all protein, RNA and DNA chains in the entry. The first graphic for a chain summarises the proportions of errors displayed in the second graphic. The second graphic shows the sequence view annotated by issues in geometry and electron density. Residues are color-coded according to the number of geometric quality criteria for which they contain at least one outlier: green = 0, yellow = 1, orange = 2 and red = 3 or more. A red dot above a residue indicates a poor fit to the electron density ($RSRZ > 2$). Stretches of 2 or more consecutive residues without any outlier are shown as a green connector. Residues present in the sample, but not in the model, are shown in grey.

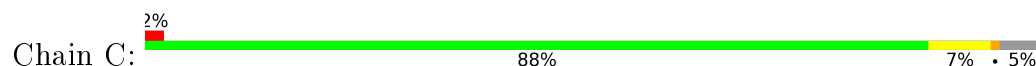
- Molecule 1: Glutathione S-transferase family protein



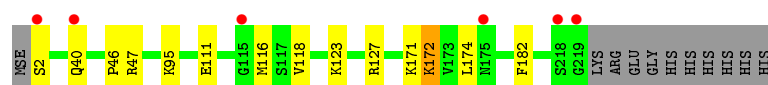
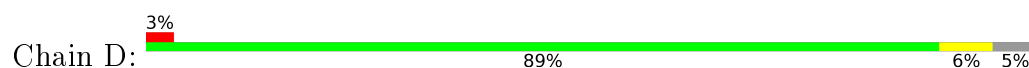
- Molecule 1: Glutathione S-transferase family protein



- Molecule 1: Glutathione S-transferase family protein



- Molecule 1: Glutathione S-transferase family protein



4 Data and refinement statistics

Property	Value	Source
Space group	P 1	Depositor
Cell constants a, b, c, α , β , γ	48.03Å 66.01Å 88.85Å 89.92° 85.55° 86.50°	Depositor
Resolution (Å)	40.00 – 1.80 39.87 – 1.80	Depositor EDS
% Data completeness (in resolution range)	96.5 (40.00-1.80) 96.4 (39.87-1.80)	Depositor EDS
R_{merge}	0.08	Depositor
R_{sym}	(Not available)	Depositor
$\langle I/\sigma(I) \rangle$ ¹	1.56 (at 1.79Å)	Xtriage
Refinement program	REFMAC 5.5.0109	Depositor
R, R_{free}	0.171 , 0.203 0.180 , 0.211	Depositor DCC
R_{free} test set	4846 reflections (5.25%)	DCC
Wilson B-factor (Å ²)	20.7	Xtriage
Anisotropy	0.070	Xtriage
Bulk solvent k_{sol} (e/Å ³), B_{sol} (Å ²)	0.36 , 47.6	EDS
L-test for twinning ²	$\langle L \rangle = 0.49$, $\langle L^2 \rangle = 0.32$	Xtriage
Estimated twinning fraction	No twinning to report.	Xtriage
F_o, F_c correlation	0.96	EDS
Total number of atoms	7696	wwPDB-VP
Average B, all atoms (Å ²)	22.0	wwPDB-VP

Xtriage's analysis on translational NCS is as follows: *The largest off-origin peak in the Patterson function is 7.19% of the height of the origin peak. No significant pseudotranslation is detected.*

¹Intensities estimated from amplitudes.

²Theoretical values of $\langle |L| \rangle$, $\langle L^2 \rangle$ for acentric reflections are 0.5, 0.333 respectively for untwinned datasets, and 0.375, 0.2 for perfectly twinned datasets.

5 Model quality [i](#)

5.1 Standard geometry [i](#)

Bond lengths and bond angles in the following residue types are not validated in this section: GSH, EPE

The Z score for a bond length (or angle) is the number of standard deviations the observed value is removed from the expected value. A bond length (or angle) with $|Z| > 5$ is considered an outlier worth inspection. RMSZ is the root-mean-square of all Z scores of the bond lengths (or angles).

Mol	Chain	Bond lengths		Bond angles	
		RMSZ	$\# Z > 5$	RMSZ	$\# Z > 5$
1	A	0.62	0/1765	0.68	1/2367 (0.0%)
1	B	0.68	0/1792	0.67	0/2402
1	C	0.70	1/1761 (0.1%)	0.68	0/2362
1	D	0.65	0/1782	0.65	0/2388
All	All	0.66	1/7100 (0.0%)	0.67	1/9519 (0.0%)

All (1) bond length outliers are listed below:

Mol	Chain	Res	Type	Atoms	Z	Observed(Å)	Ideal(Å)
1	C	160	CYS	CB-SG	-5.98	1.72	1.81

All (1) bond angle outliers are listed below:

Mol	Chain	Res	Type	Atoms	Z	Observed(°)	Ideal(°)
1	A	139	ARG	NE-CZ-NH1	5.06	122.83	120.30

There are no chirality outliers.

There are no planarity outliers.

5.2 Too-close contacts [i](#)

In the following table, the Non-H and H(model) columns list the number of non-hydrogen atoms and hydrogen atoms in the chain respectively. The H(added) column lists the number of hydrogen atoms added and optimized by MolProbity. The Clashes column lists the number of clashes within the asymmetric unit, whereas Symm-Clashes lists symmetry related clashes.

Mol	Chain	Non-H	H(model)	H(added)	Clashes	Symm-Clashes
1	A	1726	0	1764	7	0
1	B	1757	0	1794	13	0

Continued on next page...

Continued from previous page...

Mol	Chain	Non-H	H(model)	H(added)	Clashes	Symm-Clashes
1	C	1732	0	1746	11	0
1	D	1747	0	1786	7	0
2	A	20	0	15	1	0
2	B	20	0	15	2	0
2	C	20	0	15	0	0
2	D	20	0	15	0	0
3	B	15	0	18	0	0
4	A	146	0	0	1	0
4	B	182	0	0	5	0
4	C	159	0	0	0	0
4	D	152	0	0	0	0
All	All	7696	0	7168	36	0

The all-atom clashscore is defined as the number of clashes found per 1000 atoms (including hydrogen atoms). The all-atom clashscore for this structure is 3.

All (36) close contacts within the same asymmetric unit are listed below, sorted by their clash magnitude.

Atom-1	Atom-2	Interatomic distance (Å)	Clash overlap (Å)
4:B:281:HOH:O	1:C:186:LYS:HD3	1.70	0.91
1:B:212:PHE:CZ	1:B:216:ILE:HD11	2.37	0.59
1:D:171:LYS:HB2	1:D:172[A]:LYS:HE3	1.87	0.57
1:C:40[B]:GLN:CD	1:C:40[B]:GLN:H	2.09	0.55
1:C:118:VAL:HG13	1:C:123:LYS:HG3	1.89	0.55
1:B:41:ALA:HB1	4:B:274:HOH:O	2.07	0.55
1:B:119:GLU:OE1	1:B:122:ILE:HD12	2.07	0.55
4:B:281:HOH:O	1:C:186:LYS:CD	2.40	0.53
1:C:61:SER:O	1:C:62:GLU:HB2	2.09	0.53
1:B:49:LYS:HB3	2:B:300:GSH:HG12	1.91	0.52
1:B:118[B]:VAL:HG23	1:B:123:LYS:HG3	1.93	0.51
1:D:111:GLU:HA	1:D:116:MSE:O	2.09	0.51
1:A:56:GLU:HG2	4:A:943:HOH:O	2.11	0.51
1:B:39:PRO:HG2	1:B:40[A]:GLN:HE21	1.77	0.50
1:C:136:THR:HG23	1:D:46:PRO:HB2	1.94	0.49
1:D:127:ARG:NH2	1:D:174:LEU:O	2.45	0.49
1:B:212:PHE:O	1:B:215[B]:MSE:HG3	2.12	0.48
1:C:191:LEU:C	1:C:191:LEU:HD23	2.34	0.48
1:A:118:VAL:HG23	1:A:123:LYS:HG3	1.96	0.47
1:C:142:ARG:HB3	1:C:142:ARG:HE	1.49	0.47
1:A:213:MSE:O	1:A:217:ARG:HG3	2.15	0.46
1:B:48:GLY:HA2	4:B:274:HOH:O	2.16	0.45

Continued on next page...

Continued from previous page...

Atom-1	Atom-2	Interatomic distance (Å)	Clash overlap (Å)
1:B:111:GLU:HB2	1:B:118[A]:VAL:HG23	1.98	0.45
1:B:191:LEU:C	1:B:191:LEU:HD23	2.37	0.45
1:B:95:LYS:HD2	4:B:266:HOH:O	2.17	0.45
1:C:62:GLU:HB3	1:D:95:LYS:HD3	1.99	0.44
1:D:47:ARG:O	1:D:47:ARG:HG3	2.18	0.44
1:C:215[A]:MSE:HG3	1:C:216:ILE:N	2.32	0.44
1:B:61:SER:O	1:B:62:GLU:HB2	2.19	0.43
1:B:62:GLU:OE1	2:B:300:GSH:N1	2.51	0.43
1:A:23:GLU:OE2	1:A:77:LYS:NZ	2.40	0.43
1:A:61:SER:O	1:A:62:GLU:HB2	2.19	0.42
1:A:33:PHE:CZ	1:A:35:GLY:HA2	2.55	0.42
1:C:147:VAL:HG23	1:C:188:LEU:HD21	2.01	0.41
1:D:118[B]:VAL:HG23	1:D:123:LYS:HG3	2.03	0.40
1:A:13:TYR:CD2	2:A:300:GSH:HG13	2.57	0.40

There are no symmetry-related clashes.

5.3 Torsion angles [i](#)

5.3.1 Protein backbone [i](#)

In the following table, the Percentiles column shows the percent Ramachandran outliers of the chain as a percentile score with respect to all X-ray entries followed by that with respect to entries of similar resolution.

The Analysed column shows the number of residues for which the backbone conformation was analysed, and the total number of residues.

Mol	Chain	Analysed	Favoured	Allowed	Outliers	Percentiles	
1	A	221/229 (96%)	218 (99%)	3 (1%)	0	100	100
1	B	224/229 (98%)	221 (99%)	3 (1%)	0	100	100
1	C	221/229 (96%)	219 (99%)	1 (0%)	1 (0%)	34	17
1	D	223/229 (97%)	220 (99%)	3 (1%)	0	100	100
All	All	889/916 (97%)	878 (99%)	10 (1%)	1 (0%)	56	38

All (1) Ramachandran outliers are listed below:

Mol	Chain	Res	Type
1	C	62	GLU

5.3.2 Protein sidechains ⓘ

In the following table, the Percentiles column shows the percent sidechain outliers of the chain as a percentile score with respect to all X-ray entries followed by that with respect to entries of similar resolution.

The Analysed column shows the number of residues for which the sidechain conformation was analysed, and the total number of residues.

Mol	Chain	Analysed	Rotameric	Outliers	Percentiles	
1	A	184/180 (102%)	180 (98%)	4 (2%)	60	45
1	B	188/180 (104%)	185 (98%)	3 (2%)	70	59
1	C	184/180 (102%)	179 (97%)	5 (3%)	52	36
1	D	186/180 (103%)	181 (97%)	5 (3%)	52	36
All	All	742/720 (103%)	725 (98%)	17 (2%)	66	42

All (17) residues with a non-rotameric sidechain are listed below:

Mol	Chain	Res	Type
1	A	2	SER
1	A	172[A]	LYS
1	A	172[B]	LYS
1	A	182	PHE
1	B	40[A]	GLN
1	B	40[B]	GLN
1	B	182	PHE
1	C	116	MSE
1	C	139	ARG
1	C	182	PHE
1	C	215[A]	MSE
1	C	215[B]	MSE
1	D	2	SER
1	D	40	GLN
1	D	172[A]	LYS
1	D	172[B]	LYS
1	D	182	PHE

Some sidechains can be flipped to improve hydrogen bonding and reduce clashes. All (1) such sidechains are listed below:

Mol	Chain	Res	Type
1	D	40	GLN

5.3.3 RNA ⓘ

There are no RNA molecules in this entry.

5.4 Non-standard residues in protein, DNA, RNA chains ⓘ

There are no non-standard protein/DNA/RNA residues in this entry.

5.5 Carbohydrates ⓘ

There are no carbohydrates in this entry.

5.6 Ligand geometry ⓘ

5 ligands are modelled in this entry.

In the following table, the Counts columns list the number of bonds (or angles) for which Mogul statistics could be retrieved, the number of bonds (or angles) that are observed in the model and the number of bonds (or angles) that are defined in the chemical component dictionary. The Link column lists molecule types, if any, to which the group is linked. The Z score for a bond length (or angle) is the number of standard deviations the observed value is removed from the expected value. A bond length (or angle) with $|Z| > 2$ is considered an outlier worth inspection. RMSZ is the root-mean-square of all Z scores of the bond lengths (or angles).

Mol	Type	Chain	Res	Link	Bond lengths			Bond angles		
					Counts	RMSZ	# $ Z > 2$	Counts	RMSZ	# $ Z > 2$
2	GSH	A	300	-	13,19,19	3.31	2 (15%)	15,24,24	1.14	1 (6%)
3	EPE	B	230	-	15,15,15	0.98	1 (6%)	19,20,20	2.06	5 (26%)
2	GSH	B	300	-	13,19,19	3.59	2 (15%)	15,24,24	1.45	2 (13%)
2	GSH	C	300	-	13,19,19	3.20	2 (15%)	15,24,24	1.44	3 (20%)
2	GSH	D	300	-	13,19,19	3.37	2 (15%)	15,24,24	1.16	1 (6%)

In the following table, the Chirals column lists the number of chiral outliers, the number of chiral centers analysed, the number of these observed in the model and the number defined in the chemical component dictionary. Similar counts are reported in the Torsion and Rings columns. '-' means no outliers of that kind were identified.

Mol	Type	Chain	Res	Link	Chirals	Torsions	Rings
2	GSH	A	300	-	-	0/18/24/24	0/0/0/0
3	EPE	B	230	-	-	0/9/19/19	0/1/1/1
2	GSH	B	300	-	-	0/18/24/24	0/0/0/0
2	GSH	C	300	-	-	0/18/24/24	0/0/0/0

Continued on next page...

Continued from previous page...

Mol	Type	Chain	Res	Link	Chirals	Torsions	Rings
2	GSH	D	300	-	-	0/18/24/24	0/0/0/0

All (9) bond length outliers are listed below:

Mol	Chain	Res	Type	Atoms	Z	Observed(Å)	Ideal(Å)
3	B	230	EPE	C10-S	3.38	1.82	1.77
2	C	300	GSH	O2-C2	7.94	1.38	1.23
2	A	300	GSH	O2-C2	8.19	1.39	1.23
2	C	300	GSH	OE1-CD1	8.20	1.40	1.23
2	D	300	GSH	OE1-CD1	8.35	1.40	1.23
2	A	300	GSH	OE1-CD1	8.59	1.41	1.23
2	B	300	GSH	O2-C2	8.66	1.40	1.23
2	D	300	GSH	O2-C2	8.70	1.40	1.23
2	B	300	GSH	OE1-CD1	9.44	1.43	1.23

All (12) bond angle outliers are listed below:

Mol	Chain	Res	Type	Atoms	Z	Observed(°)	Ideal(°)
2	B	300	GSH	CA2-CB2-SG2	-4.24	109.33	113.99
2	A	300	GSH	CA2-CB2-SG2	-3.11	110.56	113.99
2	C	300	GSH	CA2-CB2-SG2	-2.86	110.84	113.99
2	D	300	GSH	CA2-CB2-SG2	-2.84	110.87	113.99
2	C	300	GSH	O2-C2-CA2	-2.36	115.39	120.39
2	B	300	GSH	CG1-CB1-CA1	-2.27	108.82	114.18
2	C	300	GSH	CA2-C2-N3	2.13	121.02	116.66
3	B	230	EPE	C2-C3-N4	2.26	115.05	110.65
3	B	230	EPE	O3S-S-C10	2.42	110.03	104.99
3	B	230	EPE	C7-N4-C3	3.17	118.14	111.25
3	B	230	EPE	C5-N4-C3	4.30	118.50	108.87
3	B	230	EPE	O1S-S-C10	4.77	110.24	106.87

There are no chirality outliers.

There are no torsion outliers.

There are no ring outliers.

2 monomers are involved in 3 short contacts:

Mol	Chain	Res	Type	Clashes	Symm-Clashes
2	A	300	GSH	1	0
2	B	300	GSH	2	0

5.7 Other polymers

There are no such residues in this entry.

5.8 Polymer linkage issues

There are no chain breaks in this entry.

6 Fit of model and data [i](#)

6.1 Protein, DNA and RNA chains [i](#)

In the following table, the column labelled ‘#RSRZ> 2’ contains the number (and percentage) of RSRZ outliers, followed by percent RSRZ outliers for the chain as percentile scores relative to all X-ray entries and entries of similar resolution. The OWAB column contains the minimum, median, 95th percentile and maximum values of the occupancy-weighted average B-factor per residue. The column labelled ‘Q< 0.9’ lists the number of (and percentage) of residues with an average occupancy less than 0.9.

Mol	Chain	Analysed	<RSRZ>	#RSRZ>2	OWAB(Å ²)	Q<0.9
1	A	210/229 (91%)	-0.30	5 (2%) 62 57	14, 20, 35, 51	0
1	B	209/229 (91%)	-0.39	4 (1%) 70 66	12, 18, 32, 44	0
1	C	210/229 (91%)	-0.39	4 (1%) 70 66	13, 19, 32, 47	0
1	D	210/229 (91%)	-0.28	6 (2%) 55 49	14, 20, 35, 53	0
All	All	839/916 (91%)	-0.34	19 (2%) 64 59	12, 19, 34, 53	0

All (19) RSRZ outliers are listed below:

Mol	Chain	Res	Type	RSRZ
1	D	2	SER	4.9
1	A	2	SER	4.7
1	B	2	SER	3.3
1	A	218	SER	3.3
1	D	218	SER	3.2
1	C	2	SER	3.0
1	A	56	GLU	2.8
1	A	219	GLY	2.8
1	C	56	GLU	2.7
1	D	219	GLY	2.7
1	B	217	ARG	2.6
1	C	218	SER	2.6
1	B	218	SER	2.5
1	D	115	GLY	2.5
1	D	175[A]	ASN	2.2
1	C	217	ARG	2.2
1	D	40	GLN	2.1
1	B	39	PRO	2.1
1	A	217	ARG	2.0

6.2 Non-standard residues in protein, DNA, RNA chains [i](#)

There are no non-standard protein/DNA/RNA residues in this entry.

6.3 Carbohydrates [i](#)

There are no carbohydrates in this entry.

6.4 Ligands [i](#)

In the following table, the Atoms column lists the number of modelled atoms in the group and the number defined in the chemical component dictionary. LLDF column lists the quality of electron density of the group with respect to its neighbouring residues in protein, DNA or RNA chains. The B-factors column lists the minimum, median, 95th percentile and maximum values of B factors of atoms in the group. The column labelled 'Q< 0.9' lists the number of atoms with occupancy less than 0.9.

Mol	Type	Chain	Res	Atoms	RSCC	RSR	LLDF	B-factors(\AA^2)	Q<0.9
3	EPE	B	230	15/15	0.95	0.18	1.86	40,42,46,46	0
2	GSH	C	300	20/20	0.91	0.15	1.75	22,29,48,48	0
2	GSH	B	300	20/20	0.91	0.15	1.47	23,29,47,47	0
2	GSH	A	300	20/20	0.90	0.14	1.27	21,31,48,48	0
2	GSH	D	300	20/20	0.91	0.15	1.20	21,30,52,52	0

6.5 Other polymers [i](#)

There are no such residues in this entry.