



Full wwPDB X-ray Structure Validation Report ⓘ

Feb 1, 2016 – 07:45 PM GMT

PDB ID : 4PVG
Title : Crystal structure of protein tyrosine phosphatase Shp2 catalytic domain complex with small molecular compound L88N79
Authors : Zhang, Z.-Y.; Zeng, L.; Liu, D.; Yu, Z.
Deposited on : 2014-03-17
Resolution : 2.40 Å(reported)

This is a Full wwPDB X-ray Structure Validation Report for a publicly released PDB entry.
We welcome your comments at validation@mail.wwpdb.org
A user guide is available at
<http://wwpdb.org/validation/2016/XrayValidationReportHelp>
with specific help available everywhere you see the ⓘ symbol.

The following versions of software and data (see [references ⓘ](#)) were used in the production of this report:

MolProbity : 4.02b-467
Mogul : 1.7 (RC4), CSD as536be (2015)
Xtriage (Phenix) : 1.9-1692
EDS : rb-20026688
Percentile statistics : 20151230.v01 (using entries in the PDB archive December 30th 2015)
Refmac : 5.8.0135
CCP4 : 6.5.0
Ideal geometry (proteins) : Engh & Huber (2001)
Ideal geometry (DNA, RNA) : Parkinson et al. (1996)
Validation Pipeline (wwPDB-VP) : trunk26865

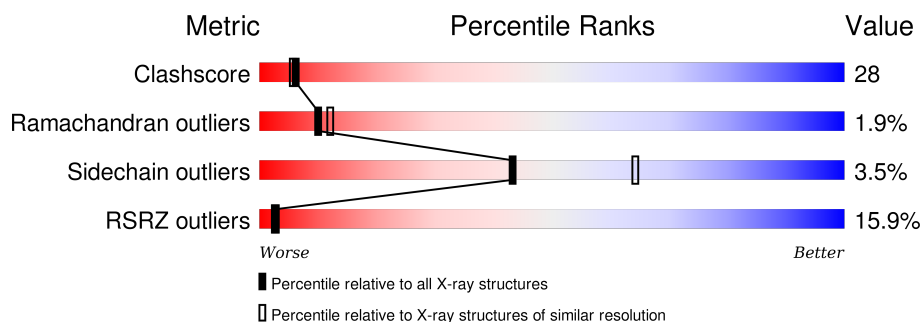
1 Overall quality at a glance

The following experimental techniques were used to determine the structure:

X-RAY DIFFRACTION

The reported resolution of this entry is 2.40 Å.

Percentile scores (ranging between 0-100) for global validation metrics of the entry are shown in the following graphic. The table shows the number of entries on which the scores are based.



Metric	Whole archive (#Entries)	Similar resolution (#Entries, resolution range(Å))
Clashscore	102246	3407 (2.40-2.40)
Ramachandran outliers	100387	3351 (2.40-2.40)
Sidechain outliers	100360	3352 (2.40-2.40)
RSRZ outliers	91569	2928 (2.40-2.40)

The table below summarises the geometric issues observed across the polymeric chains and their fit to the electron density. The red, orange, yellow and green segments on the lower bar indicate the fraction of residues that contain outliers for ≥ 3 , 2, 1 and 0 types of geometric quality criteria. A grey segment represents the fraction of residues that are not modelled. The numeric value for each fraction is indicated below the corresponding segment, with a dot representing fractions $\leq 5\%$. The upper red bar (where present) indicates the fraction of residues that have poor fit to the electron density. The numeric value is given above the bar.

Mol	Chain	Length	Quality of chain
1	A	298	

2 Entry composition

There are 3 unique types of molecules in this entry. The entry contains 2183 atoms, of which 0 are hydrogens and 0 are deuteriums.

In the tables below, the ZeroOcc column contains the number of atoms modelled with zero occupancy, the AltConf column contains the number of residues with at least one atom in alternate conformation and the Trace column contains the number of residues modelled with at most 2 atoms.

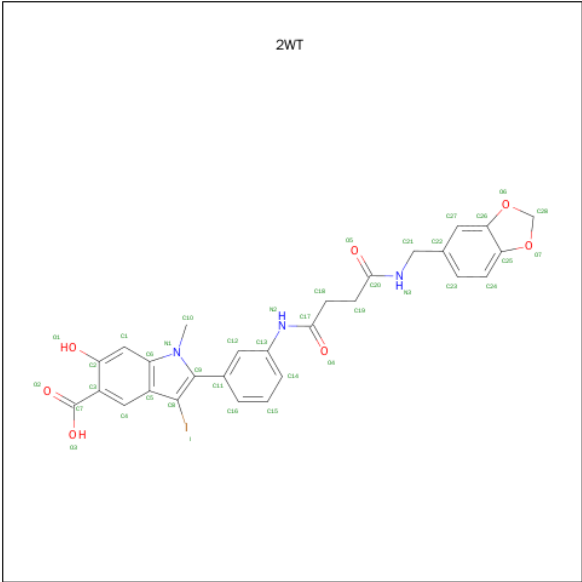
- Molecule 1 is a protein called Tyrosine-protein phosphatase non-receptor type 11.

Mol	Chain	Residues	Atoms					ZeroOcc	AltConf	Trace
			Total	C	N	O	S			
1	A	264	2126	1335	379	402	10	0	0	0

There are 13 discrepancies between the modelled and reference sequences:

Chain	Residue	Modelled	Actual	Comment	Reference
A	239	MET	-	EXPRESSION TAG	UNP Q06124
A	?	-	GLN	DELETION	UNP Q06124
A	?	-	ALA	DELETION	UNP Q06124
A	?	-	LEU	DELETION	UNP Q06124
A	?	-	LEU	DELETION	UNP Q06124
A	529	LEU	-	EXPRESSION TAG	UNP Q06124
A	530	GLU	-	EXPRESSION TAG	UNP Q06124
A	531	HIS	-	EXPRESSION TAG	UNP Q06124
A	532	HIS	-	EXPRESSION TAG	UNP Q06124
A	533	HIS	-	EXPRESSION TAG	UNP Q06124
A	534	HIS	-	EXPRESSION TAG	UNP Q06124
A	535	HIS	-	EXPRESSION TAG	UNP Q06124
A	536	HIS	-	EXPRESSION TAG	UNP Q06124

- Molecule 2 is 2-[3-({4-[(1,3-BENZODIOXOL-5-YLMETHYL)AMINO]-4-OXOBUTANOYL}AMINO)PHENYL]-6-HYDROXY-3-iodo-1-methyl-1H-indole-5-carboxylic acid (three-letter code: 2WT) (formula: C₂₈H₂₄IN₃O₇).



Mol	Chain	Residues	Atoms					ZeroOcc	AltConf
2	A	1	Total	C	I	N	O	0	0
			39	28	1	3	7		

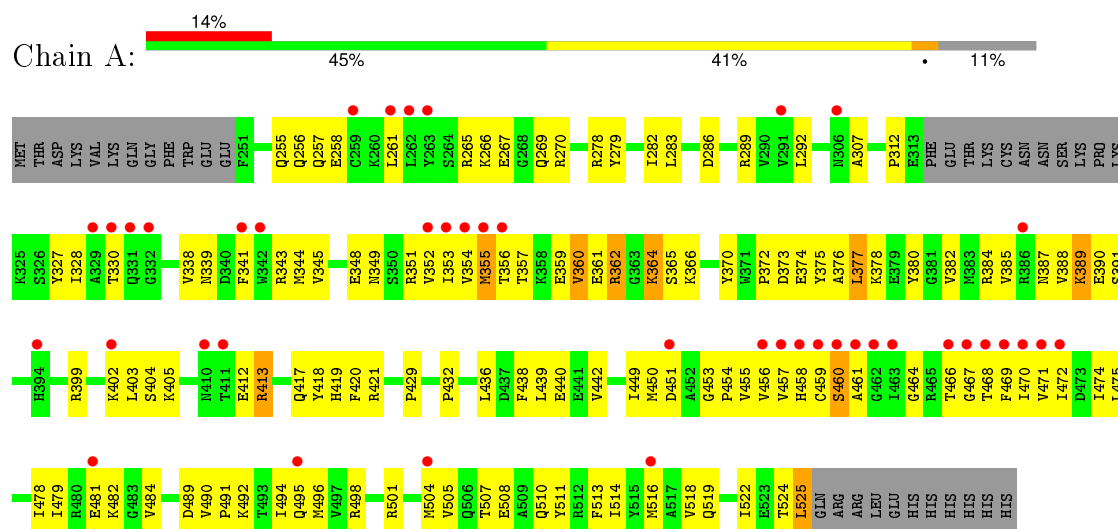
- Molecule 3 is water.

Mol	Chain	Residues	Atoms		ZeroOcc	AltConf
3	A	18	Total	O	0	0
			18	18		

3 Residue-property plots [i](#)

These plots are drawn for all protein, RNA and DNA chains in the entry. The first graphic for a chain summarises the proportions of errors displayed in the second graphic. The second graphic shows the sequence view annotated by issues in geometry and electron density. Residues are color-coded according to the number of geometric quality criteria for which they contain at least one outlier: green = 0, yellow = 1, orange = 2 and red = 3 or more. A red dot above a residue indicates a poor fit to the electron density ($\text{RSRZ} > 2$). Stretches of 2 or more consecutive residues without any outlier are shown as a green connector. Residues present in the sample, but not in the model, are shown in grey.

- Molecule 1: Tyrosine-protein phosphatase non-receptor type 11



4 Data and refinement statistics

Property	Value	Source
Space group	P 1	Depositor
Cell constants a, b, c, α , β , γ	40.03Å 40.92Å 48.93Å 94.58° 109.19° 109.95°	Depositor
Resolution (Å)	50.00 – 2.40 23.57 – 2.11	Depositor EDS
% Data completeness (in resolution range)	88.9 (50.00-2.40) 76.9 (23.57-2.11)	Depositor EDS
R_{merge}	(Not available)	Depositor
R_{sym}	(Not available)	Depositor
$\langle I/\sigma(I) \rangle$ ¹	3.66 (at 2.11Å)	Xtriage
Refinement program	CNS 1.1	Depositor
R, R_{free}	0.236 , 0.286 0.260 , (Not available)	Depositor DCC
R_{free} test set	No test flags present.	DCC
Wilson B-factor (Å ²)	53.5	Xtriage
Anisotropy	0.603	Xtriage
Bulk solvent k_{sol} (e/Å ³), B_{sol} (Å ²)	0.30 , 75.0	EDS
Estimated twinning fraction	No twinning to report.	Xtriage
L-test for twinning ²	$\langle L \rangle = 0.45$, $\langle L^2 \rangle = 0.27$	Xtriage
Outliers	0 of 12806 reflections	Xtriage
F_o, F_c correlation	0.95	EDS
Total number of atoms	2183	wwPDB-VP
Average B, all atoms (Å ²)	91.0	wwPDB-VP

Xtriage's analysis on translational NCS is as follows: *The largest off-origin peak in the Patterson function is 8.02% of the height of the origin peak. No significant pseudotranslation is detected.*

¹Intensities estimated from amplitudes.

²Theoretical values of $\langle |L| \rangle$, $\langle L^2 \rangle$ for acentric reflections are 0.5, 0.375 respectively for untwinned datasets, and 0.333, 0.2 for perfectly twinned datasets.

5 Model quality

5.1 Standard geometry

Bond lengths and bond angles in the following residue types are not validated in this section: 2WT

The Z score for a bond length (or angle) is the number of standard deviations the observed value is removed from the expected value. A bond length (or angle) with $|Z| > 5$ is considered an outlier worth inspection. RMSZ is the root-mean-square of all Z scores of the bond lengths (or angles).

Mol	Chain	Bond lengths		Bond angles	
		RMSZ	$\# Z > 5$	RMSZ	$\# Z > 5$
1	A	0.38	0/2171	0.63	0/2939

There are no bond length outliers.

There are no bond angle outliers.

There are no chirality outliers.

There are no planarity outliers.

5.2 Too-close contacts

In the following table, the Non-H and H(model) columns list the number of non-hydrogen atoms and hydrogen atoms in the chain respectively. The H(added) column lists the number of hydrogen atoms added and optimized by MolProbity. The Clashes column lists the number of clashes within the asymmetric unit, whereas Symm-Clashes lists symmetry related clashes.

Mol	Chain	Non-H	H(model)	H(added)	Clashes	Symm-Clashes
1	A	2126	0	2046	119	0
2	A	39	0	23	0	0
3	A	18	0	0	24	0
All	All	2183	0	2069	119	0

The all-atom clashscore is defined as the number of clashes found per 1000 atoms (including hydrogen atoms). The all-atom clashscore for this structure is 28.

All (119) close contacts within the same asymmetric unit are listed below, sorted by their clash magnitude.

Atom-1	Atom-2	Interatomic distance (Å)	Clash overlap (Å)
1:A:362:ARG:HG3	1:A:364:LYS:HD2	1.16	1.14

Continued on next page...

Continued from previous page...

Atom-1	Atom-2	Interatomic distance (Å)	Clash overlap (Å)
1:A:362:ARG:CG	1:A:364:LYS:HD2	1.94	0.98
1:A:362:ARG:HG3	1:A:364:LYS:CD	2.01	0.90
1:A:353:ILE:HD13	3:A:709:HOH:O	1.74	0.86
1:A:307:ALA:HB2	1:A:330:THR:HB	1.60	0.84
1:A:507:THR:OG1	1:A:510:GLN:HG3	1.78	0.83
1:A:481:GLU:HG3	1:A:482:LYS:HG2	1.61	0.83
1:A:328:ILE:HG13	1:A:454:PRO:HB2	1.63	0.80
1:A:354:VAL:HG23	3:A:703:HOH:O	1.83	0.78
1:A:490:VAL:HB	1:A:491:PRO:HD3	1.67	0.76
1:A:466:THR:HA	3:A:702:HOH:O	1.85	0.76
1:A:307:ALA:CB	1:A:330:THR:HB	2.16	0.75
1:A:387:ASN:HD21	1:A:390:GLU:HG3	1.54	0.73
1:A:466:THR:HG21	3:A:712:HOH:O	1.90	0.72
1:A:377:LEU:C	1:A:377:LEU:HD12	2.12	0.69
1:A:361:GLU:HG3	1:A:366:LYS:HG3	1.75	0.68
1:A:352:VAL:HG12	3:A:703:HOH:O	1.93	0.68
1:A:491:PRO:HG3	1:A:511:TYR:OH	1.93	0.68
1:A:355:MET:HA	3:A:705:HOH:O	1.93	0.68
1:A:361:GLU:C	1:A:362:ARG:HG2	2.14	0.67
1:A:352:VAL:HG11	1:A:442:VAL:HG13	1.77	0.66
1:A:455:VAL:HG13	3:A:703:HOH:O	1.96	0.64
1:A:364:LYS:HE2	1:A:366:LYS:NZ	2.13	0.64
1:A:404:SER:HB3	1:A:412:GLU:HA	1.80	0.64
1:A:351:ARG:HH11	1:A:351:ARG:HG3	1.63	0.63
1:A:353:ILE:HA	3:A:714:HOH:O	1.98	0.62
1:A:282:ILE:O	1:A:283:LEU:HD23	2.00	0.61
1:A:458:HIS:HD2	3:A:701:HOH:O	1.84	0.61
1:A:413:ARG:HG3	1:A:413:ARG:HH21	1.66	0.60
1:A:354:VAL:HB	1:A:457:VAL:HG22	1.83	0.60
1:A:456:VAL:HB	3:A:714:HOH:O	2.01	0.60
1:A:353:ILE:HG23	3:A:714:HOH:O	2.01	0.59
1:A:266:LYS:HA	1:A:269:GLN:OE1	2.02	0.59
1:A:267:GLU:O	1:A:270:ARG:HG3	2.02	0.59
1:A:420:PHE:HB2	3:A:707:HOH:O	2.02	0.59
1:A:255:GLN:HA	1:A:255:GLN:OE1	2.03	0.59
1:A:494:ILE:O	1:A:498:ARG:HG3	2.03	0.59
1:A:450:MET:O	1:A:451:ASP:HB2	2.03	0.59
1:A:484:VAL:CG1	1:A:522:ILE:HG23	2.33	0.58
1:A:278:ARG:HB2	1:A:278:ARG:NH1	2.18	0.58
1:A:501:ARG:O	1:A:504:MET:HG2	2.04	0.57
1:A:360:VAL:HG22	1:A:365:SER:HA	1.87	0.57

Continued on next page...

Continued from previous page...

Atom-1	Atom-2	Interatomic distance (Å)	Clash overlap (Å)
1:A:351:ARG:HG3	1:A:449:ILE:HG21	1.87	0.57
1:A:382:VAL:HG23	1:A:405:LYS:HG3	1.87	0.56
1:A:353:ILE:HG21	3:A:709:HOH:O	2.03	0.56
1:A:356:THR:HG21	3:A:702:HOH:O	2.04	0.56
1:A:390:GLU:HG2	1:A:399:ARG:HG2	1.87	0.56
1:A:374:GLU:HG2	1:A:375:TYR:CD2	2.40	0.56
1:A:327:TYR:HB3	3:A:715:HOH:O	2.05	0.56
1:A:491:PRO:O	1:A:495:GLN:HG3	2.06	0.56
1:A:470:ILE:O	1:A:474:ILE:HG13	2.06	0.56
1:A:479:ILE:HD11	1:A:518:VAL:HG13	1.89	0.55
1:A:498:ARG:HA	1:A:501:ARG:O	2.08	0.54
1:A:256:GLN:C	1:A:258:GLU:H	2.10	0.54
1:A:478:ILE:O	1:A:481:GLU:HG2	2.08	0.53
1:A:456:VAL:HG13	3:A:710:HOH:O	2.08	0.53
1:A:330:THR:HG22	3:A:716:HOH:O	2.08	0.53
1:A:344:MET:HE3	3:A:710:HOH:O	2.09	0.53
1:A:341:PHE:O	1:A:345:VAL:HG23	2.09	0.52
1:A:359:GLU:O	1:A:360:VAL:HG23	2.09	0.52
1:A:339:ASN:OD1	1:A:380:TYR:HB3	2.10	0.52
1:A:418:TYR:HB3	1:A:438:PHE:CE1	2.45	0.51
1:A:256:GLN:O	1:A:258:GLU:N	2.44	0.51
1:A:519:GLN:NE2	1:A:519:GLN:HA	2.27	0.50
1:A:481:GLU:HG3	1:A:482:LYS:N	2.25	0.50
1:A:278:ARG:HB2	1:A:278:ARG:HH11	1.75	0.50
1:A:373:ASP:O	1:A:376:ALA:HB3	2.12	0.50
1:A:467:GLY:O	1:A:471:VAL:HG23	2.12	0.50
1:A:432:PRO:HD3	1:A:516:MET:SD	2.52	0.50
1:A:403:LEU:O	1:A:412:GLU:HA	2.12	0.49
1:A:292:LEU:HB3	1:A:343:ARG:NH2	2.28	0.49
1:A:355:MET:HB2	3:A:713:HOH:O	2.11	0.49
1:A:355:MET:HB3	1:A:419:HIS:HA	1.93	0.49
1:A:489:ASP:OD2	1:A:492:LYS:HE3	2.12	0.49
1:A:387:ASN:HD21	1:A:390:GLU:CG	2.24	0.48
1:A:330:THR:HG23	3:A:706:HOH:O	2.12	0.48
1:A:468:THR:O	1:A:472:ILE:HG13	2.13	0.48
1:A:439:LEU:HD21	1:A:469:PHE:HD2	1.79	0.48
1:A:307:ALA:HB2	1:A:330:THR:CB	2.38	0.47
1:A:312:PRO:HA	1:A:496:MET:CE	2.44	0.47
1:A:338:VAL:HG13	1:A:370:TYR:HB2	1.96	0.47
1:A:413:ARG:HG3	1:A:413:ARG:NH2	2.30	0.47
1:A:374:GLU:HG2	1:A:375:TYR:CE2	2.50	0.47

Continued on next page...

Continued from previous page...

Atom-1	Atom-2	Interatomic distance (Å)	Clash overlap (Å)
1:A:484:VAL:HG12	1:A:522:ILE:HG23	1.95	0.47
1:A:366:LYS:HD2	1:A:460:SER:HB3	1.97	0.46
1:A:404:SER:HB3	1:A:412:GLU:CA	2.45	0.46
1:A:459:CYS:O	1:A:460:SER:C	2.54	0.46
1:A:508:GLU:O	1:A:511:TYR:HB3	2.16	0.46
1:A:385:VAL:HA	1:A:402:LYS:O	2.16	0.46
1:A:429:PRO:HB2	1:A:513:PHE:CE1	2.51	0.46
1:A:356:THR:HG22	3:A:707:HOH:O	2.16	0.46
1:A:377:LEU:HD13	1:A:384:ARG:HG3	1.98	0.46
1:A:471:VAL:HG11	1:A:514:ILE:HD13	1.97	0.46
1:A:519:GLN:HA	1:A:519:GLN:HE21	1.80	0.46
1:A:357:THR:HG23	1:A:459:CYS:HA	1.98	0.46
1:A:256:GLN:C	1:A:258:GLU:N	2.69	0.45
1:A:357:THR:HG21	1:A:460:SER:H	1.80	0.45
1:A:479:ILE:HG22	1:A:479:ILE:O	2.17	0.45
1:A:419:HIS:O	1:A:421:ARG:HG3	2.17	0.45
1:A:524:THR:O	1:A:525:LEU:C	2.55	0.45
1:A:360:VAL:HA	1:A:364:LYS:O	2.18	0.43
1:A:349:ASN:O	1:A:453:GLY:N	2.49	0.43
1:A:372:PRO:HB3	1:A:378:LYS:HG3	2.01	0.43
1:A:344:MET:HG2	3:A:708:HOH:O	2.18	0.42
1:A:279:TYR:CE2	1:A:461:ALA:HB2	2.54	0.42
1:A:351:ARG:NH1	1:A:351:ARG:HG3	2.30	0.42
1:A:388:VAL:O	1:A:389:LYS:HB2	2.19	0.42
1:A:286:ASP:HA	1:A:289:ARG:HD3	2.01	0.42
1:A:362:ARG:CD	1:A:364:LYS:HD2	2.47	0.41
1:A:356:THR:CG2	3:A:702:HOH:O	2.66	0.41
1:A:457:VAL:HG12	3:A:702:HOH:O	2.20	0.41
1:A:327:TYR:CD2	1:A:327:TYR:N	2.89	0.41
1:A:436:LEU:O	1:A:440:GLU:HB2	2.20	0.41
1:A:399:ARG:NH1	1:A:417:GLN:OE1	2.48	0.41
1:A:261:LEU:HD12	1:A:265:ARG:CZ	2.51	0.41
1:A:475:LEU:O	1:A:479:ILE:HG13	2.21	0.41
1:A:344:MET:O	1:A:348:GLU:HG2	2.21	0.40
1:A:378:LYS:HB3	1:A:378:LYS:HE2	1.93	0.40
1:A:514:ILE:O	1:A:518:VAL:HG23	2.22	0.40

There are no symmetry-related clashes.

5.3 Torsion angles [i](#)

5.3.1 Protein backbone [i](#)

In the following table, the Percentiles column shows the percent Ramachandran outliers of the chain as a percentile score with respect to all X-ray entries followed by that with respect to entries of similar resolution.

The Analysed column shows the number of residues for which the backbone conformation was analysed, and the total number of residues.

Mol	Chain	Analysed	Favoured	Allowed	Outliers	Percentiles
1	A	260/298 (87%)	234 (90%)	21 (8%)	5 (2%)	10 12

All (5) Ramachandran outliers are listed below:

Mol	Chain	Res	Type
1	A	257	GLN
1	A	389	LYS
1	A	505	VAL
1	A	360	VAL
1	A	464	GLY

5.3.2 Protein sidechains [i](#)

In the following table, the Percentiles column shows the percent sidechain outliers of the chain as a percentile score with respect to all X-ray entries followed by that with respect to entries of similar resolution.

The Analysed column shows the number of residues for which the sidechain conformation was analysed, and the total number of residues.

Mol	Chain	Analysed	Rotameric	Outliers	Percentiles
1	A	230/272 (85%)	222 (96%)	8 (4%)	43 64

All (8) residues with a non-rotameric sidechain are listed below:

Mol	Chain	Res	Type
1	A	355	MET
1	A	362	ARG
1	A	364	LYS
1	A	377	LEU
1	A	391	SER
1	A	413	ARG

Continued on next page...

Continued from previous page...

Mol	Chain	Res	Type
1	A	460	SER
1	A	525	LEU

Some sidechains can be flipped to improve hydrogen bonding and reduce clashes. All (4) such sidechains are listed below:

Mol	Chain	Res	Type
1	A	335	GLN
1	A	443	HIS
1	A	444	HIS
1	A	519	GLN

5.3.3 RNA [i](#)

There are no RNA molecules in this entry.

5.4 Non-standard residues in protein, DNA, RNA chains [i](#)

There are no non-standard protein/DNA/RNA residues in this entry.

5.5 Carbohydrates [i](#)

There are no carbohydrates in this entry.

5.6 Ligand geometry [i](#)

1 ligand is modelled in this entry.

In the following table, the Counts columns list the number of bonds (or angles) for which Mogul statistics could be retrieved, the number of bonds (or angles) that are observed in the model and the number of bonds (or angles) that are defined in the chemical component dictionary. The Link column lists molecule types, if any, to which the group is linked. The Z score for a bond length (or angle) is the number of standard deviations the observed value is removed from the expected value. A bond length (or angle) with $|Z| > 2$ is considered an outlier worth inspection. RMSZ is the root-mean-square of all Z scores of the bond lengths (or angles).

Mol	Type	Chain	Res	Link	Bond lengths			Bond angles		
					Counts	RMSZ	$\# Z > 2$	Counts	RMSZ	$\# Z > 2$
2	2WT	A	601	-	37,43,43	2.87	9 (24%)	49,62,62	2.21	13 (26%)

In the following table, the Chirals column lists the number of chiral outliers, the number of chiral centers analysed, the number of these observed in the model and the number defined in the chemical component dictionary. Similar counts are reported in the Torsion and Rings columns. '-' means no outliers of that kind were identified.

Mol	Type	Chain	Res	Link	Chirals	Torsions	Rings
2	2WT	A	601	-	-	1/18/28/28	0/5/5/5

All (9) bond length outliers are listed below:

Mol	Chain	Res	Type	Atoms	Z	Observed(Å)	Ideal(Å)
2	A	601	2WT	O7-C25	-10.28	1.23	1.38
2	A	601	2WT	O6-C26	-9.75	1.24	1.38
2	A	601	2WT	C8-C5	-5.75	1.34	1.41
2	A	601	2WT	C11-C9	-3.65	1.38	1.48
2	A	601	2WT	C13-N2	-2.49	1.36	1.41
2	A	601	2WT	C4-C5	-2.29	1.37	1.42
2	A	601	2WT	C1-C2	2.08	1.39	1.37
2	A	601	2WT	C20-N3	2.19	1.38	1.33
2	A	601	2WT	C8-I	4.73	2.19	2.10

All (13) bond angle outliers are listed below:

Mol	Chain	Res	Type	Atoms	Z	Observed(°)	Ideal(°)
2	A	601	2WT	O6-C28-O7	-2.85	103.29	108.12
2	A	601	2WT	O4-C17-N2	-2.84	118.65	123.72
2	A	601	2WT	C16-C11-C12	-2.68	114.61	118.17
2	A	601	2WT	C14-C13-C12	-2.44	116.77	119.69
2	A	601	2WT	C16-C11-C9	2.14	124.23	120.43
2	A	601	2WT	C2-C1-C6	2.19	121.05	117.09
2	A	601	2WT	C12-C13-N2	2.85	129.29	120.13
2	A	601	2WT	C18-C17-N2	2.92	119.45	114.52
2	A	601	2WT	C11-C9-N1	3.93	128.88	123.16
2	A	601	2WT	C11-C12-C13	4.07	125.32	121.52
2	A	601	2WT	C9-C8-I	4.55	135.02	128.54
2	A	601	2WT	C9-N1-C6	6.50	116.13	106.93
2	A	601	2WT	C13-N2-C17	7.09	140.91	127.47

There are no chirality outliers.

All (1) torsion outliers are listed below:

Mol	Chain	Res	Type	Atoms
2	A	601	2WT	C18-C17-N2-C13

There are no ring outliers.

No monomer is involved in short contacts.

5.7 Other polymers

There are no such residues in this entry.

5.8 Polymer linkage issues

There are no chain breaks in this entry.

6 Fit of model and data ⓘ

6.1 Protein, DNA and RNA chains ⓘ

In the following table, the column labelled ‘#RSRZ> 2’ contains the number (and percentage) of RSRZ outliers, followed by percent RSRZ outliers for the chain as percentile scores relative to all X-ray entries and entries of similar resolution. The OWAB column contains the minimum, median, 95th percentile and maximum values of the occupancy-weighted average B-factor per residue. The column labelled ‘Q< 0.9’ lists the number of (and percentage) of residues with an average occupancy less than 0.9.

Mol	Chain	Analysed	<RSRZ>	#RSRZ>2	OWAB(Å ²)	Q<0.9
1	A	264/298 (88%)	0.67	42 (15%) 3 2	77, 91, 101, 108	4 (1%)

All (42) RSRZ outliers are listed below:

Mol	Chain	Res	Type	RSRZ
1	A	467	GLY	4.3
1	A	461	ALA	4.3
1	A	341	PHE	4.1
1	A	469	PHE	4.0
1	A	459	CYS	3.9
1	A	457	VAL	3.8
1	A	262	LEU	3.8
1	A	354	VAL	3.6
1	A	330	THR	3.6
1	A	466	THR	3.5
1	A	458	HIS	3.5
1	A	259	CYS	3.5
1	A	481	GLU	3.4
1	A	470	ILE	3.4
1	A	468	THR	3.2
1	A	261	LEU	3.1
1	A	342	TRP	3.1
1	A	471	VAL	3.1
1	A	462	GLY	3.0
1	A	456	VAL	3.0
1	A	332	GLY	2.8
1	A	463	ILE	2.7
1	A	516	MET	2.7
1	A	451	ASP	2.5
1	A	504	MET	2.5
1	A	329	ALA	2.5
1	A	331	GLN	2.5

Continued on next page...

Continued from previous page...

Mol	Chain	Res	Type	RSRZ
1	A	411	THR	2.4
1	A	356	THR	2.3
1	A	495	GLN	2.3
1	A	355	MET	2.3
1	A	386	ARG	2.3
1	A	394	HIS	2.2
1	A	291	VAL	2.2
1	A	472	ILE	2.2
1	A	410	ASN	2.2
1	A	402	LYS	2.1
1	A	353	ILE	2.1
1	A	352	VAL	2.0
1	A	263	TYR	2.0
1	A	460	SER	2.0
1	A	306	ASN	2.0

6.2 Non-standard residues in protein, DNA, RNA chains [i](#)

There are no non-standard protein/DNA/RNA residues in this entry.

6.3 Carbohydrates [i](#)

There are no carbohydrates in this entry.

6.4 Ligands [i](#)

In the following table, the Atoms column lists the number of modelled atoms in the group and the number defined in the chemical component dictionary. LLDF column lists the quality of electron density of the group with respect to its neighbouring residues in protein, DNA or RNA chains. The B-factors column lists the minimum, median, 95th percentile and maximum values of B factors of atoms in the group. The column labelled 'Q< 0.9' lists the number of atoms with occupancy less than 0.9.

Mol	Type	Chain	Res	Atoms	RSCC	RSR	LLDF	B-factors(Å ²)	Q<0.9
2	2WT	A	601	39/39	0.88	0.17	-0.99	80,92,105,107	0

6.5 Other polymers [i](#)

There are no such residues in this entry.