



Full wwPDB X-ray Structure Validation Report ⓘ

Jan 31, 2016 – 09:37 PM GMT

PDB ID : 1PXB
Title : CRYSTAL STRUCTURES OF MUTANT PSEUDOMONAS AERUGINOSA P-HYDROXYBENZOATE HYDROXYLASE: THE TYR201PHE, TYR385PHE, AND ASN300ASP VARIANTS
Authors : Lah, M.S.; Palfey, B.A.; Schreuder, H.A.; Ludwig, M.L.
Deposited on : 1994-09-27
Resolution : 2.30 Å(reported)

This is a Full wwPDB X-ray Structure Validation Report for a publicly released PDB entry.
We welcome your comments at validation@mail.wwpdb.org
A user guide is available at
<http://wwpdb.org/validation/2016/XrayValidationReportHelp>
with specific help available everywhere you see the ⓘ symbol.

The following versions of software and data (see [references ⓘ](#)) were used in the production of this report:

MolProbity : 4.02b-467
Mogul : 1.7 (RC4), CSD as536be (2015)
Xtriage (Phenix) : **NOT EXECUTED**
EDS : **NOT EXECUTED**
Percentile statistics : 20151230.v01 (using entries in the PDB archive December 30th 2015)
Ideal geometry (proteins) : Engh & Huber (2001)
Ideal geometry (DNA, RNA) : Parkinson et al. (1996)
Validation Pipeline (wwPDB-VP) : trunk26865

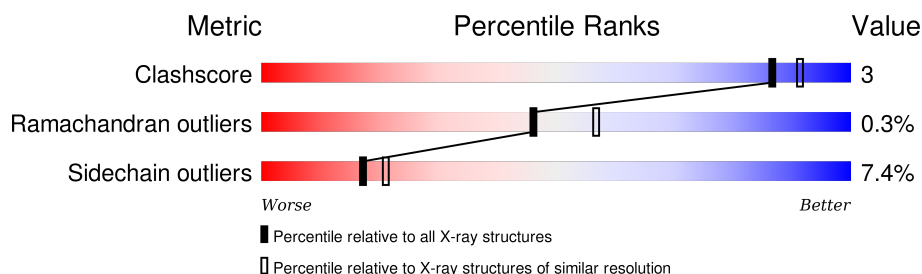
1 Overall quality at a glance

The following experimental techniques were used to determine the structure:

X-RAY DIFFRACTION

The reported resolution of this entry is 2.30 Å.

Percentile scores (ranging between 0-100) for global validation metrics of the entry are shown in the following graphic. The table shows the number of entries on which the scores are based.



Metric	Whole archive (#Entries)	Similar resolution (#Entries, resolution range(Å))
Clashscore	102246	4452 (2.30-2.30)
Ramachandran outliers	100387	4410 (2.30-2.30)
Sidechain outliers	100360	4409 (2.30-2.30)

The table below summarises the geometric issues observed across the polymeric chains and their fit to the electron density. The red, orange, yellow and green segments on the lower bar indicate the fraction of residues that contain outliers for ≥ 3 , 2, 1 and 0 types of geometric quality criteria. A grey segment represents the fraction of residues that are not modelled. The numeric value for each fraction is indicated below the corresponding segment, with a dot representing fractions $\leq 5\%$. The upper red bar (where present) indicates the fraction of residues that have poor fit to the electron density. The numeric value is given above the bar.

Note EDS was not executed.

Mol	Chain	Length	Quality of chain
1	A	394	

2 Entry composition [i](#)

There are 4 unique types of molecules in this entry. The entry contains 3366 atoms, of which 0 are hydrogens and 0 are deuteriums.

In the tables below, the ZeroOcc column contains the number of atoms modelled with zero occupancy, the AltConf column contains the number of residues with at least one atom in alternate conformation and the Trace column contains the number of residues modelled with at most 2 atoms.

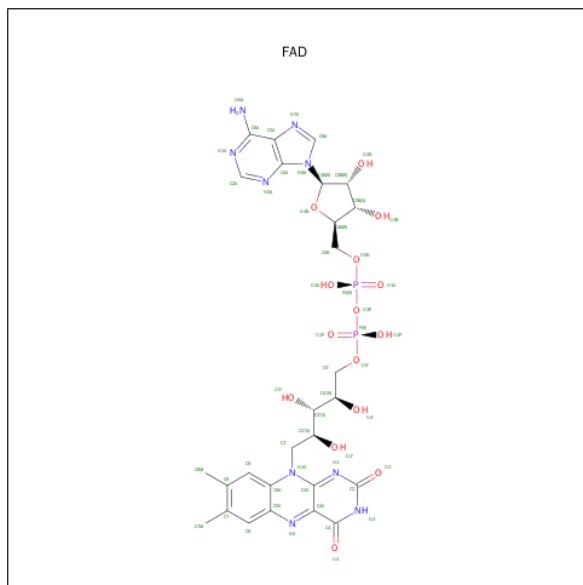
- Molecule 1 is a protein called P-HYDROXYBENZOATE HYDROXYLASE.

Mol	Chain	Residues	Atoms					ZeroOcc	AltConf	Trace
			Total	C	N	O	S			
1	A	394	3124	1975	563	575	11	0	0	0

There is a discrepancy between the modelled and reference sequences:

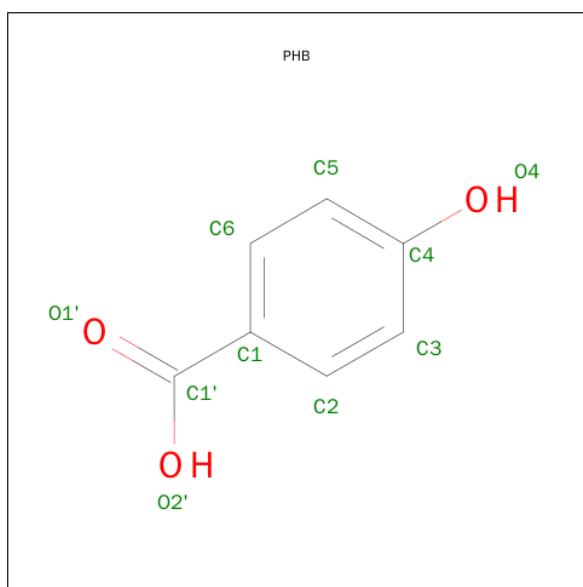
Chain	Residue	Modelled	Actual	Comment	Reference
A	201	PHE	TYR	CONFLICT	UNP P20586

- Molecule 2 is FLAVIN-ADENINE DINUCLEOTIDE (three-letter code: FAD) (formula: $C_{27}H_{33}N_9O_{15}P_2$).



Mol	Chain	Residues	Atoms					ZeroOcc	AltConf
			Total	C	N	O	P		
2	A	1	53	27	9	15	2	0	0

- Molecule 3 is P-HYDROXYBENZOIC ACID (three-letter code: PHB) (formula: $C_7H_6O_3$).



Mol	Chain	Residues	Atoms			ZeroOcc	AltConf
3	A	1	Total	C	O	0	0
			10	7	3		

- Molecule 4 is water.

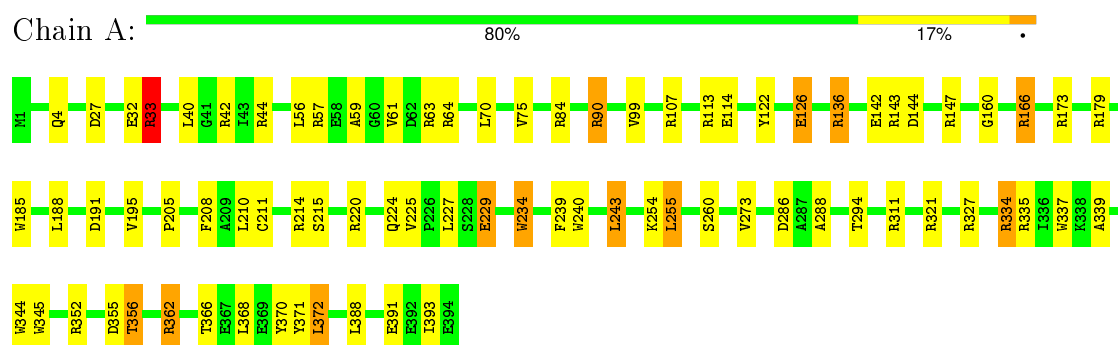
Mol	Chain	Residues	Atoms		ZeroOcc	AltConf
4	A	179	Total	O	0	0
			179	179		

3 Residue-property plots [i](#)

These plots are drawn for all protein, RNA and DNA chains in the entry. The first graphic for a chain summarises the proportions of errors displayed in the second graphic. The second graphic shows the sequence view annotated by issues in geometry and electron density. Residues are color-coded according to the number of geometric quality criteria for which they contain at least one outlier: green = 0, yellow = 1, orange = 2 and red = 3 or more. A red dot above a residue indicates a poor fit to the electron density ($RSRZ > 2$). Stretches of 2 or more consecutive residues without any outlier are shown as a green connector. Residues present in the sample, but not in the model, are shown in grey.

Note EDS was not executed.

• Molecule 1: P-HYDROXYBENZOATE HYDROXYLASE



4 Data and refinement statistics

Xtriage (Phenix) and EDS were not executed - this section will therefore be incomplete.

Property	Value	Source
Space group	C 2 2 21	Depositor
Cell constants a, b, c, α , β , γ	71.71Å 146.27Å 87.91Å 90.00° 90.00° 90.00°	Depositor
Resolution (Å)	40.00 – 2.30	Depositor
% Data completeness (in resolution range)	(Not available) (40.00-2.30)	Depositor
R_{merge}	(Not available)	Depositor
R_{sym}	(Not available)	Depositor
Refinement program	X-PLOR	Depositor
R, R_{free}	0.202 , (Not available)	Depositor
Estimated twinning fraction	No twinning to report.	Xtriage
Total number of atoms	3366	wwPDB-VP
Average B, all atoms (Å ²)	13.0	wwPDB-VP

5 Model quality

5.1 Standard geometry

Bond lengths and bond angles in the following residue types are not validated in this section: PHB, FAD

The Z score for a bond length (or angle) is the number of standard deviations the observed value is removed from the expected value. A bond length (or angle) with $|Z| > 5$ is considered an outlier worth inspection. RMSZ is the root-mean-square of all Z scores of the bond lengths (or angles).

Mol	Chain	Bond lengths		Bond angles	
		RMSZ	$\# Z > 5$	RMSZ	$\# Z > 5$
1	A	0.95	2/3189 (0.1%)	1.73	63/4314 (1.5%)

All (2) bond length outliers are listed below:

Mol	Chain	Res	Type	Atoms	Z	Observed(Å)	Ideal(Å)
1	A	122	TYR	CE2-CZ	5.36	1.45	1.38
1	A	32	GLU	CD-OE1	-5.16	1.20	1.25

All (63) bond angle outliers are listed below:

Mol	Chain	Res	Type	Atoms	Z	Observed(°)	Ideal(°)
1	A	33	ARG	NE-CZ-NH1	12.55	126.58	120.30
1	A	42	ARG	NE-CZ-NH1	12.27	126.43	120.30
1	A	179	ARG	NE-CZ-NH1	11.10	125.85	120.30
1	A	42	ARG	NE-CZ-NH2	-10.45	115.08	120.30
1	A	185	TRP	CD1-CG-CD2	9.62	114.00	106.30
1	A	179	ARG	NE-CZ-NH2	-9.23	115.69	120.30
1	A	214	ARG	NE-CZ-NH1	9.06	124.83	120.30
1	A	344	TRP	CD1-CG-CD2	9.05	113.54	106.30
1	A	362	ARG	NE-CZ-NH1	8.74	124.67	120.30
1	A	311	ARG	NE-CZ-NH2	-8.61	116.00	120.30
1	A	337	TRP	CD1-CG-CD2	8.31	112.95	106.30
1	A	136	ARG	NE-CZ-NH1	7.91	124.25	120.30
1	A	33	ARG	NE-CZ-NH2	-7.88	116.36	120.30
1	A	311	ARG	NE-CZ-NH1	7.78	124.19	120.30
1	A	185	TRP	CG-CD1-NE1	-7.57	102.53	110.10
1	A	337	TRP	CE2-CD2-CG	-7.49	101.31	107.30
1	A	143	ARG	NE-CZ-NH1	7.49	124.04	120.30
1	A	344	TRP	CE2-CD2-CG	-7.32	101.44	107.30
1	A	335	ARG	NE-CZ-NH1	7.25	123.93	120.30

Continued on next page...

Continued from previous page...

Mol	Chain	Res	Type	Atoms	Z	Observed(°)	Ideal(°)
1	A	234	TRP	CD1-CG-CD2	7.25	112.10	106.30
1	A	44	ARG	NE-CZ-NH2	-7.21	116.69	120.30
1	A	240	TRP	CE2-CD2-CG	-7.17	101.57	107.30
1	A	240	TRP	CD1-CG-CD2	6.99	111.89	106.30
1	A	345	TRP	CD1-CG-CD2	6.91	111.83	106.30
1	A	243	LEU	CA-CB-CG	6.83	131.00	115.30
1	A	166	ARG	NE-CZ-NH1	6.78	123.69	120.30
1	A	234	TRP	CE2-CD2-CG	-6.72	101.92	107.30
1	A	166	ARG	NE-CZ-NH2	-6.71	116.95	120.30
1	A	355	ASP	CA-C-N	-6.64	102.60	117.20
1	A	334	ARG	CG-CD-NE	-6.60	97.94	111.80
1	A	185	TRP	CE2-CD2-CG	-6.53	102.08	107.30
1	A	122	TYR	CB-CG-CD2	-6.50	117.10	121.00
1	A	356	THR	CA-CB-CG2	6.34	121.28	112.40
1	A	334	ARG	NE-CZ-NH1	6.33	123.47	120.30
1	A	254	LYS	CA-CB-CG	6.23	127.11	113.40
1	A	344	TRP	CG-CD1-NE1	-6.22	103.88	110.10
1	A	107	ARG	NE-CZ-NH1	6.17	123.39	120.30
1	A	321	ARG	NE-CZ-NH1	6.15	123.38	120.30
1	A	356	THR	CA-CB-OG1	-6.14	96.10	109.00
1	A	345	TRP	CE2-CD2-CG	-6.03	102.48	107.30
1	A	64	ARG	NE-CZ-NH1	6.00	123.30	120.30
1	A	75	VAL	CB-CA-C	-6.00	100.01	111.40
1	A	220	ARG	NE-CZ-NH2	5.92	123.26	120.30
1	A	57	ARG	NE-CZ-NH1	5.85	123.22	120.30
1	A	57	ARG	NE-CZ-NH2	-5.83	117.38	120.30
1	A	143	ARG	NE-CZ-NH2	-5.80	117.40	120.30
1	A	335	ARG	NE-CZ-NH2	-5.80	117.40	120.30
1	A	113	ARG	NE-CZ-NH1	5.78	123.19	120.30
1	A	337	TRP	CG-CD1-NE1	-5.75	104.35	110.10
1	A	240	TRP	CG-CD2-CE3	5.72	139.05	133.90
1	A	370	TYR	CB-CG-CD1	-5.71	117.58	121.00
1	A	63	ARG	NE-CZ-NH1	5.69	123.14	120.30
1	A	99	VAL	CG1-CB-CG2	-5.67	101.84	110.90
1	A	90	ARG	NE-CZ-NH2	-5.66	117.47	120.30
1	A	337	TRP	CG-CD2-CE3	5.53	138.87	133.90
1	A	211	CYS	CA-CB-SG	-5.49	104.12	114.00
1	A	339	ALA	CB-CA-C	-5.49	101.87	110.10
1	A	225	VAL	N-CA-CB	-5.38	99.65	111.50
1	A	255	LEU	CA-CB-CG	5.25	127.39	115.30
1	A	366	THR	O-C-N	-5.24	114.31	122.70
1	A	355	ASP	CA-C-O	5.22	131.05	120.10

Continued on next page...

Continued from previous page...

Mol	Chain	Res	Type	Atoms	Z	Observed(°)	Ideal(°)
1	A	371	TYR	CB-CG-CD2	-5.17	117.90	121.00
1	A	240	TRP	CB-CG-CD1	-5.14	120.32	127.00

There are no chirality outliers.

There are no planarity outliers.

5.2 Too-close contacts ⓘ

In the following table, the Non-H and H(model) columns list the number of non-hydrogen atoms and hydrogen atoms in the chain respectively. The H(added) column lists the number of hydrogen atoms added and optimized by MolProbity. The Clashes column lists the number of clashes within the asymmetric unit, whereas Symm-Clashes lists symmetry related clashes.

Mol	Chain	Non-H	H(model)	H(added)	Clashes	Symm-Clashes
1	A	3124	0	3120	17	0
2	A	53	0	31	0	0
3	A	10	0	5	0	0
4	A	179	0	0	2	0
All	All	3366	0	3156	17	0

The all-atom clashscore is defined as the number of clashes found per 1000 atoms (including hydrogen atoms). The all-atom clashscore for this structure is 3.

All (17) close contacts within the same asymmetric unit are listed below, sorted by their clash magnitude.

Atom-1	Atom-2	Interatomic distance (Å)	Clash overlap (Å)
1:A:33:ARG:HH11	1:A:33:ARG:HG3	1.45	0.80
1:A:142:GLU:HG3	1:A:147:ARG:HD2	1.86	0.57
1:A:188:LEU:HD13	1:A:239:PHE:CD1	2.46	0.51
1:A:160:GLY:HA2	1:A:286:ASP:HB2	1.92	0.50
1:A:166:ARG:HD2	1:A:273:VAL:HG11	1.94	0.49
1:A:327:ARG:HH22	1:A:334:ARG:HH22	1.59	0.49
1:A:70:LEU:HD21	1:A:215:SER:HA	1.94	0.48
1:A:229:GLU:HG3	1:A:234:TRP:HE1	1.78	0.48
1:A:229:GLU:CG	1:A:234:TRP:HE1	2.27	0.47
1:A:368:LEU:O	1:A:372:LEU:HB2	2.14	0.46
1:A:188:LEU:HG	1:A:260:SER:HB3	1.97	0.46
1:A:126:GLU:HA	4:A:471:HOH:O	2.15	0.46
1:A:273:VAL:HG22	1:A:288:ALA:O	2.16	0.45
1:A:4:GLN:HB2	1:A:27:ASP:O	2.18	0.44

Continued on next page...

Continued from previous page...

Atom-1	Atom-2	Interatomic distance (Å)	Clash overlap (Å)
1:A:59:ALA:O	1:A:61:VAL:HG23	2.19	0.43
1:A:84:ARG:HB3	4:A:552:HOH:O	2.21	0.41
1:A:208:PHE:HB3	1:A:224:GLN:HB2	2.03	0.40

There are no symmetry-related clashes.

5.3 Torsion angles [i](#)

5.3.1 Protein backbone [i](#)

In the following table, the Percentiles column shows the percent Ramachandran outliers of the chain as a percentile score with respect to all X-ray entries followed by that with respect to entries of similar resolution.

The Analysed column shows the number of residues for which the backbone conformation was analysed, and the total number of residues.

Mol	Chain	Analysed	Favoured	Allowed	Outliers	Percentiles
1	A	392/394 (100%)	385 (98%)	6 (2%)	1 (0%)	46 57

All (1) Ramachandran outliers are listed below:

Mol	Chain	Res	Type
1	A	144	ASP

5.3.2 Protein sidechains [i](#)

In the following table, the Percentiles column shows the percent sidechain outliers of the chain as a percentile score with respect to all X-ray entries followed by that with respect to entries of similar resolution.

The Analysed column shows the number of residues for which the sidechain conformation was analysed, and the total number of residues.

Mol	Chain	Analysed	Rotameric	Outliers	Percentiles
1	A	325/325 (100%)	301 (93%)	24 (7%)	17 21

All (24) residues with a non-rotameric sidechain are listed below:

Mol	Chain	Res	Type
1	A	33	ARG
1	A	40	LEU
1	A	56	LEU
1	A	90	ARG
1	A	114	GLU
1	A	126	GLU
1	A	136	ARG
1	A	173	ARG
1	A	191	ASP
1	A	195	VAL
1	A	205	PRO
1	A	210	LEU
1	A	227	LEU
1	A	229	GLU
1	A	243	LEU
1	A	255	LEU
1	A	294	THR
1	A	352	ARG
1	A	356	THR
1	A	362	ARG
1	A	372	LEU
1	A	388	LEU
1	A	391	GLU
1	A	393	ILE

Some sidechains can be flipped to improve hydrogen bonding and reduce clashes. All (1) such sidechains are listed below:

Mol	Chain	Res	Type
1	A	50	GLN

5.3.3 RNA ⓘ

There are no RNA molecules in this entry.

5.4 Non-standard residues in protein, DNA, RNA chains ⓘ

There are no non-standard protein/DNA/RNA residues in this entry.

5.5 Carbohydrates ⓘ

There are no carbohydrates in this entry.

5.6 Ligand geometry

2 ligands are modelled in this entry.

In the following table, the Counts columns list the number of bonds (or angles) for which Mogul statistics could be retrieved, the number of bonds (or angles) that are observed in the model and the number of bonds (or angles) that are defined in the chemical component dictionary. The Link column lists molecule types, if any, to which the group is linked. The Z score for a bond length (or angle) is the number of standard deviations the observed value is removed from the expected value. A bond length (or angle) with $|Z| > 2$ is considered an outlier worth inspection. RMSZ is the root-mean-square of all Z scores of the bond lengths (or angles).

Mol	Type	Chain	Res	Link	Bond lengths			Bond angles		
					Counts	RMSZ	# $ Z > 2$	Counts	RMSZ	# $ Z > 2$
2	FAD	A	395	-	48,58,58	1.45	9 (18%)	54,89,89	2.56	9 (16%)
3	PHB	A	396	-	7,10,10	0.51	0	10,13,13	0.41	0

In the following table, the Chirals column lists the number of chiral outliers, the number of chiral centers analysed, the number of these observed in the model and the number defined in the chemical component dictionary. Similar counts are reported in the Torsion and Rings columns. '-' means no outliers of that kind were identified.

Mol	Type	Chain	Res	Link	Chirals	Torsions	Rings
2	FAD	A	395	-	-	0/30/50/50	0/6/6/6
3	PHB	A	396	-	-	0/0/4/4	0/1/1/1

All (9) bond length outliers are listed below:

Mol	Chain	Res	Type	Atoms	Z	Observed(Å)	Ideal(Å)
2	A	395	FAD	C9A-C5X	-2.81	1.36	1.42
2	A	395	FAD	C6-C5X	-2.58	1.37	1.41
2	A	395	FAD	P-O1P	-2.41	1.42	1.51
2	A	395	FAD	C5A-C4A	-2.23	1.35	1.40
2	A	395	FAD	P-O2P	-2.02	1.46	1.54
2	A	395	FAD	C5'-C4'	2.21	1.55	1.51
2	A	395	FAD	C10-N10	3.13	1.42	1.39
2	A	395	FAD	C4-N3	3.28	1.39	1.33
2	A	395	FAD	C4-C4X	3.86	1.49	1.41

All (9) bond angle outliers are listed below:

Mol	Chain	Res	Type	Atoms	Z	Observed(°)	Ideal(°)
2	A	395	FAD	C4X-C4-N3	-6.39	114.86	123.59
2	A	395	FAD	C4-C4X-C10	-5.33	116.53	119.94
2	A	395	FAD	C4X-N5-C5X	-4.84	111.19	116.76

Continued on next page...

Continued from previous page...

Mol	Chain	Res	Type	Atoms	Z	Observed(°)	Ideal(°)
2	A	395	FAD	C4X-C10-N10	-4.32	117.97	120.52
2	A	395	FAD	C6-C5X-N5	-3.75	114.13	118.96
2	A	395	FAD	C6-C5X-C9A	-2.18	116.12	118.98
2	A	395	FAD	C4A-C5A-N7A	2.30	111.60	109.48
2	A	395	FAD	C9A-C5X-N5	4.91	129.62	122.36
2	A	395	FAD	C4-N3-C2	12.00	125.62	115.25

There are no chirality outliers.

There are no torsion outliers.

There are no ring outliers.

No monomer is involved in short contacts.

5.7 Other polymers [i](#)

There are no such residues in this entry.

5.8 Polymer linkage issues [i](#)

There are no chain breaks in this entry.

6 Fit of model and data

6.1 Protein, DNA and RNA chains

EDS was not executed - this section will therefore be empty.

6.2 Non-standard residues in protein, DNA, RNA chains

EDS was not executed - this section will therefore be empty.

6.3 Carbohydrates

EDS was not executed - this section will therefore be empty.

6.4 Ligands

EDS was not executed - this section will therefore be empty.

6.5 Other polymers

EDS was not executed - this section will therefore be empty.