



# Full wwPDB X-ray Structure Validation Report ⓘ

Feb 1, 2016 – 07:47 PM GMT

PDB ID : 4PXQ  
Title : Crystal structure of D-glucuronyl C5-epimerase in complex with heparin hex-  
asaccharide  
Authors : Ke, J.; Qin, Y.; Gu, X.; Tan, J.; Brunzelle, J.S.; Xu, H.E.; Ding, K.  
Deposited on : 2014-03-24  
Resolution : 2.20 Å(reported)

This is a Full wwPDB X-ray Structure Validation Report for a publicly released PDB entry.  
We welcome your comments at [validation@mail.wwpdb.org](mailto:validation@mail.wwpdb.org)  
A user guide is available at  
<http://wwpdb.org/validation/2016/XrayValidationReportHelp>  
with specific help available everywhere you see the ⓘ symbol.

---

The following versions of software and data (see [references ⓘ](#)) were used in the production of this report:

MolProbity : 4.02b-467  
Mogul : 1.7 (RC4), CSD as536be (2015)  
Xtriage (Phenix) : 1.9-1692  
EDS : rb-20026688  
Percentile statistics : 20151230.v01 (using entries in the PDB archive December 30th 2015)  
Refmac : 5.8.0135  
CCP4 : 6.5.0  
Ideal geometry (proteins) : Engh & Huber (2001)  
Ideal geometry (DNA, RNA) : Parkinson et al. (1996)  
Validation Pipeline (wwPDB-VP) : trunk26865

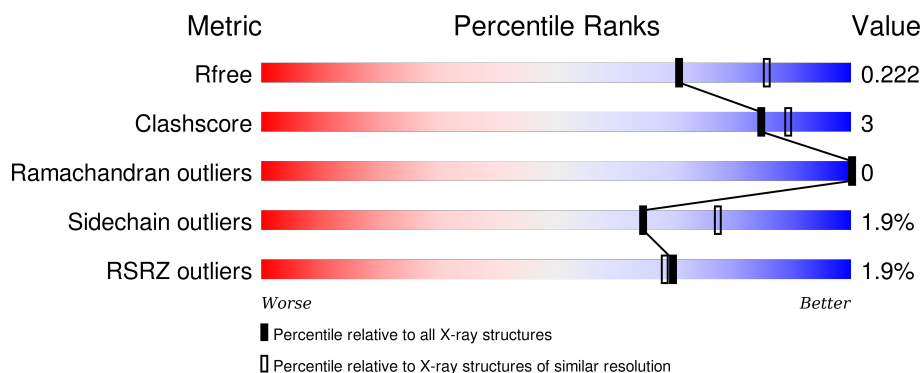
# 1 Overall quality at a glance

The following experimental techniques were used to determine the structure:

## *X-RAY DIFFRACTION*

The reported resolution of this entry is 2.20 Å.

Percentile scores (ranging between 0-100) for global validation metrics of the entry are shown in the following graphic. The table shows the number of entries on which the scores are based.



Metric	Whole archive (#Entries)	Similar resolution (#Entries, resolution range(Å))
$R_{free}$	91344	3774 (2.20-2.20)
Clashscore	102246	4477 (2.20-2.20)
Ramachandran outliers	100387	4404 (2.20-2.20)
Sidechain outliers	100360	4405 (2.20-2.20)
RSRZ outliers	91569	3781 (2.20-2.20)

The table below summarises the geometric issues observed across the polymeric chains and their fit to the electron density. The red, orange, yellow and green segments on the lower bar indicate the fraction of residues that contain outliers for  $\geq 3$ , 2, 1 and 0 types of geometric quality criteria. A grey segment represents the fraction of residues that are not modelled. The numeric value for each fraction is indicated below the corresponding segment, with a dot representing fractions  $\leq 5\%$ . The upper red bar (where present) indicates the fraction of residues that have poor fit to the electron density. The numeric value is given above the bar.

Mol	Chain	Length	Quality of chain
1	A	585	<div> <div></div> <div> <div></div> <div>81%</div> <div>6%</div> <div>•</div> <div>12%</div> </div> </div>
1	B	585	<div> <div>2%</div> <div></div> <div> <div></div> <div>81%</div> <div>6%</div> <div>•</div> <div>12%</div> </div> </div>

## 2 Entry composition [i](#)

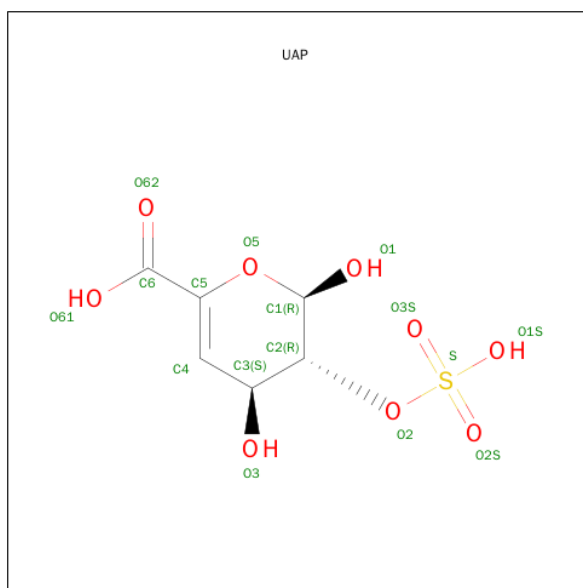
There are 4 unique types of molecules in this entry. The entry contains 9275 atoms, of which 0 are hydrogens and 0 are deuteriums.

In the tables below, the ZeroOcc column contains the number of atoms modelled with zero occupancy, the AltConf column contains the number of residues with at least one atom in alternate conformation and the Trace column contains the number of residues modelled with at most 2 atoms.

- Molecule 1 is a protein called D-glucuronyl C5 epimerase B.

Mol	Chain	Residues	Atoms					ZeroOcc	AltConf	Trace
1	A	516	Total	C	N	O	S	0	0	0
			4128	2634	708	771	15			
1	B	515	Total	C	N	O	S	0	0	0
			4124	2632	707	770	15			

- Molecule 2 is 4-DEOXY-2-O-SULFO-ALPHA-L-THREO-HEX-4-ENOPYRANURONIC ACID (three-letter code: UAP) (formula: C<sub>6</sub>H<sub>8</sub>O<sub>9</sub>S).



Mol	Chain	Residues	Atoms				ZeroOcc	AltConf
2	A	1	Total	C	O	S	0	0
			15	6	8	1		
2	B	1	Total	C	O	S	0	0
			15	6	8	1		

- Molecule 3 is a polymer of unknown type called SUGAR (5-MER).

Mol	Chain	Residues	Atoms					ZeroOcc	AltConf
3	A	5	Total	C	N	O	S	0	0
			90	30	3	49	8		
3	B	5	Total	C	N	O	S	0	0
			90	30	3	49	8		

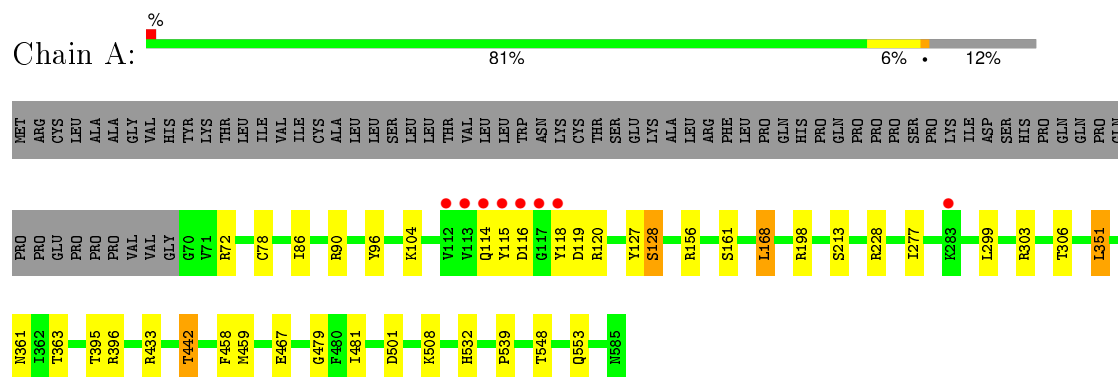
- Molecule 4 is water.

Mol	Chain	Residues	Atoms		ZeroOcc	AltConf
4	A	439	Total	O	0	0
			439	439		
4	B	374	Total	O	0	0
			374	374		

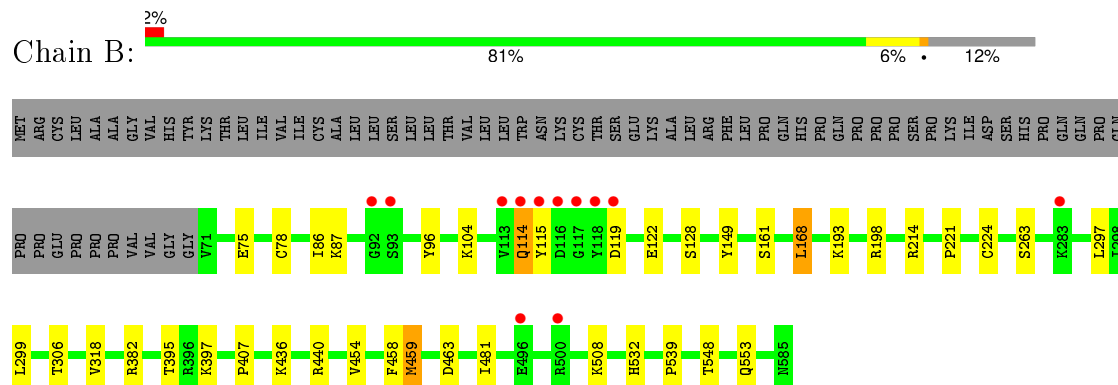
### 3 Residue-property plots [i](#)

These plots are drawn for all protein, RNA and DNA chains in the entry. The first graphic for a chain summarises the proportions of errors displayed in the second graphic. The second graphic shows the sequence view annotated by issues in geometry and electron density. Residues are color-coded according to the number of geometric quality criteria for which they contain at least one outlier: green = 0, yellow = 1, orange = 2 and red = 3 or more. A red dot above a residue indicates a poor fit to the electron density ( $RSRZ > 2$ ). Stretches of 2 or more consecutive residues without any outlier are shown as a green connector. Residues present in the sample, but not in the model, are shown in grey.

- Molecule 1: D-glucuronyl C5 epimerase B



- Molecule 1: D-glucuronyl C5 epimerase B



## 4 Data and refinement statistics

Property	Value	Source
Space group	P 21 21 2	Depositor
Cell constants a, b, c, $\alpha$ , $\beta$ , $\gamma$	152.61 Å   200.98 Å   46.56 Å 90.00°   90.00°   90.00°	Depositor
Resolution (Å)	45.43 – 2.20 45.36 – 2.20	Depositor EDS
% Data completeness (in resolution range)	100.0 (45.43-2.20) 100.0 (45.36-2.20)	Depositor EDS
$R_{merge}$	0.29	Depositor
$R_{sym}$	(Not available)	Depositor
$\langle I/\sigma(I) \rangle$ <sup>1</sup>	2.02 (at 2.20 Å)	Xtriage
Refinement program	REFMAC 5.7.0032	Depositor
R, $R_{free}$	0.194   ,   0.222 0.194   ,   0.222	Depositor DCC
$R_{free}$ test set	3728 reflections (5.31%)	DCC
Wilson B-factor (Å <sup>2</sup> )	27.8	Xtriage
Anisotropy	0.187	Xtriage
Bulk solvent $k_{sol}$ (e/Å <sup>3</sup> ), $B_{sol}$ (Å <sup>2</sup> )	0.34 , 38.5	EDS
Estimated twinning fraction	No twinning to report.	Xtriage
L-test for twinning <sup>2</sup>	$\langle  L  \rangle = 0.48$ , $\langle L^2 \rangle = 0.31$	Xtriage
Outliers	0 of 73992 reflections	Xtriage
$F_o, F_c$ correlation	0.94	EDS
Total number of atoms	9275	wwPDB-VP
Average B, all atoms (Å <sup>2</sup> )	29.0	wwPDB-VP

Xtriage's analysis on translational NCS is as follows: *The largest off-origin peak in the Patterson function is 3.12% of the height of the origin peak. No significant pseudotranslation is detected.*

<sup>1</sup>Intensities estimated from amplitudes.

<sup>2</sup>Theoretical values of  $\langle |L| \rangle$ ,  $\langle L^2 \rangle$  for acentric reflections are 0.5, 0.375 respectively for untwinned datasets, and 0.333, 0.2 for perfectly twinned datasets.

## 5 Model quality [i](#)

### 5.1 Standard geometry [i](#)

Bond lengths and bond angles in the following residue types are not validated in this section: UAP, IDS, SGN

The Z score for a bond length (or angle) is the number of standard deviations the observed value is removed from the expected value. A bond length (or angle) with  $|Z| > 5$  is considered an outlier worth inspection. RMSZ is the root-mean-square of all Z scores of the bond lengths (or angles).

Mol	Chain	Bond lengths		Bond angles	
		RMSZ	$\# Z  > 5$	RMSZ	$\# Z  > 5$
1	A	0.45	0/4233	0.61	3/5738 (0.1%)
1	B	0.43	0/4229	0.59	0/5733
All	All	0.44	0/8462	0.60	3/11471 (0.0%)

There are no bond length outliers.

All (3) bond angle outliers are listed below:

Mol	Chain	Res	Type	Atoms	Z	Observed(°)	Ideal(°)
1	A	156	ARG	NE-CZ-NH1	-5.47	117.56	120.30
1	A	351	LEU	CA-CB-CG	5.16	127.18	115.30
1	A	72	ARG	N-CA-CB	-5.13	101.36	110.60

There are no chirality outliers.

There are no planarity outliers.

### 5.2 Too-close contacts [i](#)

In the following table, the Non-H and H(model) columns list the number of non-hydrogen atoms and hydrogen atoms in the chain respectively. The H(added) column lists the number of hydrogen atoms added and optimized by MolProbity. The Clashes column lists the number of clashes within the asymmetric unit, whereas Symm-Clashes lists symmetry related clashes.

Mol	Chain	Non-H	H(model)	H(added)	Clashes	Symm-Clashes
1	A	4128	0	4057	24	0
1	B	4124	0	4054	26	0
2	A	15	0	4	0	0
2	B	15	0	4	0	0
3	A	90	0	44	0	0
3	B	90	0	44	1	0

*Continued on next page...*

*Continued from previous page...*

Mol	Chain	Non-H	H(model)	H(added)	Clashes	Symm-Clashes
4	A	439	0	0	4	0
4	B	374	0	0	6	0
All	All	9275	0	8207	48	0

The all-atom clashscore is defined as the number of clashes found per 1000 atoms (including hydrogen atoms). The all-atom clashscore for this structure is 3.

All (48) close contacts within the same asymmetric unit are listed below, sorted by their clash magnitude.

Atom-1	Atom-2	Interatomic distance (Å)	Clash overlap (Å)
1:B:395:THR:HG22	1:B:407:PRO:HD3	1.45	0.97
1:B:508:LYS:HE2	4:B:947:HOH:O	1.74	0.86
1:A:115:TYR:HB2	1:A:118:TYR:O	1.78	0.84
1:A:228:ARG:HD2	4:A:1324:HOH:O	1.84	0.78
1:A:115:TYR:OH	1:A:120:ARG:NH2	2.20	0.73
1:A:198:ARG:HG2	4:A:1050:HOH:O	1.88	0.72
1:A:433:ARG:NH1	4:A:1086:HOH:O	2.28	0.67
1:B:198:ARG:HG2	4:B:1260:HOH:O	1.98	0.64
1:A:114:GLN:HA	1:A:119:ASP:CB	2.27	0.64
1:A:114:GLN:HA	1:A:119:ASP:HB2	1.83	0.60
1:B:115:TYR:OH	1:B:122:GLU:OE2	2.21	0.58
1:A:96:TYR:HB3	1:B:96:TYR:HB3	1.85	0.58
1:A:442:THR:HG21	1:A:501:ASP:OD2	2.04	0.58
1:B:463:ASP:OD2	1:B:508:LYS:HD2	2.04	0.57
1:A:361:ASN:O	1:A:363:THR:HG23	2.04	0.57
1:A:481:ILE:HG21	1:A:553:GLN:HB3	1.86	0.57
1:B:397:LYS:HE2	3:B:806:SGN:O6S	2.07	0.54
1:B:532:HIS:HB3	1:B:539:PRO:HA	1.90	0.54
1:A:161:SER:HB2	1:A:168:LEU:HD11	1.88	0.54
1:B:548:THR:HG22	4:B:1266:HOH:O	2.08	0.53
1:A:161:SER:HB2	1:A:168:LEU:CD1	2.39	0.52
1:B:481:ILE:HG21	1:B:553:GLN:HB3	1.92	0.52
1:A:532:HIS:HB3	1:A:539:PRO:HA	1.92	0.51
1:B:221:PRO:HG2	1:B:224:CYS:SG	2.50	0.51
1:A:90:ARG:NH1	1:B:119:ASP:OD2	2.45	0.50
1:B:382:ARG:NH2	4:B:1196:HOH:O	2.46	0.49
1:B:382:ARG:HD2	4:B:995:HOH:O	2.13	0.48
1:B:168:LEU:HD13	1:B:297:LEU:HD11	1.96	0.47
1:A:467:GLU:HB2	1:A:479:GLY:HA3	1.97	0.47
1:B:161:SER:HB2	1:B:168:LEU:CD1	2.45	0.46
1:A:78:CYS:HB2	1:A:86:ILE:HG13	1.97	0.45

*Continued on next page...*



*Continued from previous page...*

Atom-1	Atom-2	Interatomic distance (Å)	Clash overlap (Å)
1:A:127:TYR:O	1:A:128:SER:HB2	2.15	0.45
1:A:396:ARG:NH1	4:A:942:HOH:O	2.49	0.45
1:B:78:CYS:HB2	1:B:86:ILE:HG13	1.97	0.45
1:A:299:LEU:HB2	1:A:306:THR:HB	1.97	0.45
1:B:75:GLU:OE2	1:B:87:LYS:HE3	2.18	0.43
1:B:114:GLN:HB2	1:B:119:ASP:HB3	2.00	0.43
1:A:508:LYS:HE3	1:A:508:LYS:HB3	1.82	0.43
1:A:277:ILE:HD12	1:A:277:ILE:N	2.34	0.43
1:B:436:LYS:O	1:B:440:ARG:HG3	2.20	0.42
1:B:508:LYS:HB3	1:B:508:LYS:HE3	1.62	0.41
1:A:127:TYR:O	1:A:128:SER:CB	2.68	0.41
1:B:193:LYS:HE3	4:B:1216:HOH:O	2.21	0.41
1:B:263:SER:HA	1:B:318:VAL:O	2.20	0.41
1:A:458:PHE:CE2	1:A:459:MET:HG3	2.56	0.41
1:B:299:LEU:HB2	1:B:306:THR:HB	2.03	0.40
1:B:149:TYR:O	1:B:193:LYS:NZ	2.44	0.40
1:B:458:PHE:CE2	1:B:459:MET:HG3	2.56	0.40

There are no symmetry-related clashes.

## 5.3 Torsion angles ⓘ

### 5.3.1 Protein backbone ⓘ

In the following table, the Percentiles column shows the percent Ramachandran outliers of the chain as a percentile score with respect to all X-ray entries followed by that with respect to entries of similar resolution.

The Analysed column shows the number of residues for which the backbone conformation was analysed, and the total number of residues.

Mol	Chain	Analysed	Favoured	Allowed	Outliers	Percentiles	
1	A	514/585 (88%)	502 (98%)	12 (2%)	0	100	100
1	B	513/585 (88%)	500 (98%)	13 (2%)	0	100	100
All	All	1027/1170 (88%)	1002 (98%)	25 (2%)	0	100	100

There are no Ramachandran outliers to report.

### 5.3.2 Protein sidechains ⓘ

In the following table, the Percentiles column shows the percent sidechain outliers of the chain as a percentile score with respect to all X-ray entries followed by that with respect to entries of similar resolution.

The Analysed column shows the number of residues for which the sidechain conformation was analysed, and the total number of residues.

Mol	Chain	Analysed	Rotameric	Outliers	Percentiles	
1	A	444/507 (88%)	434 (98%)	10 (2%)	58	71
1	B	444/507 (88%)	437 (98%)	7 (2%)	70	82
All	All	888/1014 (88%)	871 (98%)	17 (2%)	65	77

All (17) residues with a non-rotameric sidechain are listed below:

Mol	Chain	Res	Type
1	A	104	LYS
1	A	116	ASP
1	A	128	SER
1	A	168	LEU
1	A	213	SER
1	A	303	ARG
1	A	351	LEU
1	A	395	THR
1	A	442	THR
1	A	548	THR
1	B	104	LYS
1	B	114	GLN
1	B	128	SER
1	B	168	LEU
1	B	214	ARG
1	B	454	VAL
1	B	459	MET

Some sidechains can be flipped to improve hydrogen bonding and reduce clashes. All (1) such sidechains are listed below:

Mol	Chain	Res	Type
1	B	296	GLN

### 5.3.3 RNA ⓘ

There are no RNA molecules in this entry.

## 5.4 Non-standard residues in protein, DNA, RNA chains ⓘ

There are no non-standard protein/DNA/RNA residues in this entry.

## 5.5 Carbohydrates ⓘ

10 carbohydrates are modelled in this entry.

In the following table, the Counts columns list the number of bonds (or angles) for which Mogul statistics could be retrieved, the number of bonds (or angles) that are observed in the model and the number of bonds (or angles) that are defined in the chemical component dictionary. The Link column lists molecule types, if any, to which the group is linked. The Z score for a bond length (or angle) is the number of standard deviations the observed value is removed from the expected value. A bond length (or angle) with  $|Z| > 2$  is considered an outlier worth inspection. RMSZ is the root-mean-square of all Z scores of the bond lengths (or angles).

Mol	Type	Chain	Res	Link	Bond lengths			Bond angles		
					Counts	RMSZ	# $ Z  > 2$	Counts	RMSZ	# $ Z  > 2$
3	SGN	A	802	3,2	17,19,20	1.43	5 (29%)	19,29,31	1.14	2 (10%)
3	IDS	A	803	3	13,16,17	1.24	2 (15%)	17,24,26	1.18	2 (11%)
3	SGN	A	804	3	17,19,20	1.67	5 (29%)	19,29,31	1.45	2 (10%)
3	IDS	A	805	3	13,16,17	1.28	2 (15%)	17,24,26	1.04	1 (5%)
3	SGN	A	806	3	18,20,20	1.03	1 (5%)	20,31,31	2.12	5 (25%)
3	SGN	B	802	3,2	17,19,20	1.55	5 (29%)	19,29,31	1.60	2 (10%)
3	IDS	B	803	3	13,16,17	1.12	2 (15%)	17,24,26	1.17	3 (17%)
3	SGN	B	804	3	17,19,20	1.63	3 (17%)	19,29,31	2.07	2 (10%)
3	IDS	B	805	3	13,16,17	1.30	2 (15%)	17,24,26	0.97	1 (5%)
3	SGN	B	806	3	18,20,20	1.04	1 (5%)	20,31,31	2.14	6 (30%)

In the following table, the Chirals column lists the number of chiral outliers, the number of chiral centers analysed, the number of these observed in the model and the number defined in the chemical component dictionary. Similar counts are reported in the Torsion and Rings columns. '-' means no outliers of that kind were identified.

Mol	Type	Chain	Res	Link	Chirals	Torsions	Rings
3	SGN	A	802	3,2	-	0/11/28/31	0/1/1/1
3	IDS	A	803	3	-	0/5/26/29	0/1/1/1
3	SGN	A	804	3	-	0/11/28/31	0/1/1/1
3	IDS	A	805	3	-	0/5/26/29	0/1/1/1
3	SGN	A	806	3	-	0/11/31/31	0/1/1/1
3	SGN	B	802	3,2	-	0/11/28/31	0/1/1/1
3	IDS	B	803	3	-	0/5/26/29	0/1/1/1

*Continued on next page...*

*Continued from previous page...*

Mol	Type	Chain	Res	Link	Chirals	Torsions	Rings
3	SGN	B	804	3	-	0/11/28/31	0/1/1/1
3	IDS	B	805	3	-	0/5/26/29	0/1/1/1
3	SGN	B	806	3	-	0/11/31/31	0/1/1/1

All (28) bond length outliers are listed below:

Mol	Chain	Res	Type	Atoms	Z	Observed(Å)	Ideal(Å)
3	B	804	SGN	C1-C2	-4.19	1.46	1.52
3	A	804	SGN	C1-C2	-3.59	1.47	1.52
3	B	805	IDS	O2-C2	-3.37	1.42	1.47
3	A	805	IDS	O2-C2	-3.29	1.42	1.47
3	A	803	IDS	O2-C2	-3.14	1.42	1.47
3	B	802	SGN	C1-C2	-2.85	1.48	1.52
3	B	803	IDS	O2-C2	-2.65	1.43	1.47
3	A	804	SGN	O5-C1	-2.63	1.39	1.43
3	B	802	SGN	O5-C1	-2.45	1.39	1.43
3	A	802	SGN	C1-C2	-2.42	1.49	1.52
3	A	802	SGN	O5-C1	-2.35	1.39	1.43
3	B	802	SGN	C2-N	-2.05	1.44	1.47
3	A	802	SGN	O1S-S1	2.02	1.44	1.42
3	B	804	SGN	O1S-S1	2.13	1.44	1.42
3	A	802	SGN	O6S-S2	2.21	1.62	1.50
3	A	804	SGN	O2S-S1	2.24	1.44	1.42
3	B	803	IDS	O3S-S	2.38	1.62	1.50
3	A	806	SGN	O6S-S2	2.39	1.62	1.50
3	A	804	SGN	O1S-S1	2.42	1.44	1.42
3	B	802	SGN	O6S-S2	2.48	1.63	1.50
3	A	802	SGN	O2S-S1	2.52	1.44	1.42
3	B	806	SGN	O6S-S2	2.53	1.63	1.50
3	B	805	IDS	O3S-S	2.58	1.63	1.50
3	A	803	IDS	O3S-S	2.58	1.63	1.50
3	A	805	IDS	O3S-S	2.59	1.63	1.50
3	B	804	SGN	O6S-S2	2.67	1.64	1.50
3	B	802	SGN	O2S-S1	2.83	1.45	1.42
3	A	804	SGN	O6S-S2	2.86	1.65	1.50

All (26) bond angle outliers are listed below:

Mol	Chain	Res	Type	Atoms	Z	Observed(°)	Ideal(°)
3	B	804	SGN	C1-O5-C5	-7.46	102.77	112.25
3	A	806	SGN	C4-C3-C2	-7.34	100.26	110.43
3	B	806	SGN	C4-C3-C2	-7.33	100.28	110.43

*Continued on next page...*

*Continued from previous page...*

Mol	Chain	Res	Type	Atoms	Z	Observed(°)	Ideal(°)
3	B	802	SGN	C1-O5-C5	-5.88	104.78	112.25
3	A	804	SGN	O6-C6-C5	-3.84	100.52	107.90
3	A	804	SGN	C1-O5-C5	-3.80	107.43	112.25
3	B	804	SGN	O6-C6-C5	-3.67	100.84	107.90
3	A	802	SGN	C1-O5-C5	-2.84	108.64	112.25
3	B	803	IDS	O4-C4-C5	-2.50	105.72	110.42
3	A	806	SGN	O6-C6-C5	-2.46	103.17	107.90
3	B	806	SGN	O6-C6-C5	-2.16	103.75	107.90
3	B	806	SGN	O1S-S1-N	-2.00	105.82	108.50
3	A	803	IDS	C4-C3-C2	2.01	113.70	110.20
3	B	803	IDS	C1-C2-C3	2.03	112.41	109.39
3	B	802	SGN	C3-C4-C5	2.08	113.83	110.20
3	B	806	SGN	O3-C3-C2	2.09	113.91	109.66
3	A	802	SGN	C3-C4-C5	2.19	114.02	110.20
3	A	803	IDS	C1-C2-C3	2.28	112.79	109.39
3	A	806	SGN	C1-O5-C5	2.40	117.91	113.47
3	B	803	IDS	C4-C3-C2	2.41	114.39	110.20
3	B	806	SGN	C1-O5-C5	2.45	118.00	113.47
3	A	806	SGN	O5-C5-C4	2.47	114.31	109.68
3	B	806	SGN	O5-C5-C4	2.53	114.43	109.68
3	A	806	SGN	C3-C2-N	2.56	115.73	110.64
3	B	805	IDS	C1-C2-C3	2.81	113.57	109.39
3	A	805	IDS	C1-C2-C3	3.12	114.03	109.39

There are no chirality outliers.

There are no torsion outliers.

There are no ring outliers.

1 monomer is involved in 1 short contact:

Mol	Chain	Res	Type	Clashes	Symm-Clashes
3	B	806	SGN	1	0

## 5.6 Ligand geometry

2 ligands are modelled in this entry.

In the following table, the Counts columns list the number of bonds (or angles) for which Mogul statistics could be retrieved, the number of bonds (or angles) that are observed in the model and the number of bonds (or angles) that are defined in the chemical component dictionary. The Link column lists molecule types, if any, to which the group is linked. The Z score for a bond length (or angle) is the number of standard deviations the observed value is removed from the expected

value. A bond length (or angle) with  $|Z| > 2$  is considered an outlier worth inspection. RMSZ is the root-mean-square of all Z scores of the bond lengths (or angles).

Mol	Type	Chain	Res	Link	Bond lengths			Bond angles		
					Counts	RMSZ	$\# Z  > 2$	Counts	RMSZ	$\# Z  > 2$
2	UAP	A	801	3	12,15,16	2.48	3 (25%)	11,22,24	1.35	2 (18%)
2	UAP	B	801	3	12,15,16	2.38	3 (25%)	11,22,24	1.33	1 (9%)

In the following table, the Chirals column lists the number of chiral outliers, the number of chiral centers analysed, the number of these observed in the model and the number defined in the chemical component dictionary. Similar counts are reported in the Torsion and Rings columns. '-' means no outliers of that kind were identified.

Mol	Type	Chain	Res	Link	Chirals	Torsions	Rings
2	UAP	A	801	3	-	0/5/22/25	0/1/1/1
2	UAP	B	801	3	-	0/5/22/25	0/1/1/1

All (6) bond length outliers are listed below:

Mol	Chain	Res	Type	Atoms	Z	Observed(Å)	Ideal(Å)
2	B	801	UAP	O2-C2	-3.13	1.42	1.47
2	A	801	UAP	O2-C2	-3.03	1.42	1.47
2	B	801	UAP	O3S-S	4.78	1.62	1.45
2	B	801	UAP	O5-C5	4.79	1.44	1.37
2	A	801	UAP	O5-C5	4.85	1.44	1.37
2	A	801	UAP	O3S-S	5.05	1.63	1.45

All (3) bond angle outliers are listed below:

Mol	Chain	Res	Type	Atoms	Z	Observed(°)	Ideal(°)
2	A	801	UAP	O2-S-O3S	2.12	113.75	106.86
2	B	801	UAP	C1-C2-C3	3.21	113.13	109.32
2	A	801	UAP	C1-C2-C3	3.23	113.16	109.32

There are no chirality outliers.

There are no torsion outliers.

There are no ring outliers.

No monomer is involved in short contacts.

## 5.7 Other polymers ⓘ

There are no such residues in this entry.

## 5.8 Polymer linkage issues

There are no chain breaks in this entry.

## 6 Fit of model and data

### 6.1 Protein, DNA and RNA chains

In the following table, the column labelled ‘#RSRZ> 2’ contains the number (and percentage) of RSRZ outliers, followed by percent RSRZ outliers for the chain as percentile scores relative to all X-ray entries and entries of similar resolution. The OWAB column contains the minimum, median, 95<sup>th</sup> percentile and maximum values of the occupancy-weighted average B-factor per residue. The column labelled ‘Q< 0.9’ lists the number of (and percentage) of residues with an average occupancy less than 0.9.

Mol	Chain	Analysed	<RSRZ>	#RSRZ>2	OWAB(Å <sup>2</sup> )	Q<0.9
1	A	516/585 (88%)	-0.29	8 (1%) 74 73	13, 23, 49, 119	0
1	B	515/585 (88%)	-0.22	12 (2%) 64 63	15, 26, 53, 108	0
All	All	1031/1170 (88%)	-0.25	20 (1%) 70 68	13, 25, 51, 119	0

All (20) RSRZ outliers are listed below:

Mol	Chain	Res	Type	RSRZ
1	A	118	TYR	8.6
1	A	116	ASP	7.5
1	A	115	TYR	5.6
1	B	118	TYR	5.6
1	A	117	GLY	4.6
1	B	116	ASP	4.4
1	A	113	VAL	3.9
1	B	115	TYR	3.5
1	A	283	LYS	3.2
1	A	114	GLN	3.1
1	B	114	GLN	3.1
1	B	113	VAL	2.9
1	B	117	GLY	2.6
1	B	119	ASP	2.6
1	B	92	GLY	2.5
1	A	112	VAL	2.4
1	B	283	LYS	2.4
1	B	500	ARG	2.2
1	B	496	GLU	2.0
1	B	93	SER	2.0



## 6.2 Non-standard residues in protein, DNA, RNA chains [i](#)

There are no non-standard protein/DNA/RNA residues in this entry.

## 6.3 Carbohydrates [i](#)

In the following table, the Atoms column lists the number of modelled atoms in the group and the number defined in the chemical component dictionary. LLDF column lists the quality of electron density of the group with respect to its neighbouring residues in protein, DNA or RNA chains. The B-factors column lists the minimum, median, 95<sup>th</sup> percentile and maximum values of B factors of atoms in the group. The column labelled 'Q< 0.9' lists the number of atoms with occupancy less than 0.9.

Mol	Type	Chain	Res	Atoms	RSCC	RSR	LLDF	B-factors(Å <sup>2</sup> )	Q<0.9
3	SGN	B	804	19/20	0.95	0.12	1.81	35,40,52,54	0
3	IDS	B	805	16/17	0.90	0.17	1.03	44,56,75,75	0
3	SGN	B	806	20/20	0.91	0.17	0.71	60,64,72,74	0
3	SGN	A	804	19/20	0.95	0.10	-0.47	29,35,47,47	0
3	IDS	B	803	16/17	0.97	0.09	-0.49	31,33,35,35	0
3	SGN	B	802	19/20	0.97	0.09	-0.89	28,30,34,35	0
3	SGN	A	806	20/20	0.93	0.13	-0.97	48,54,61,63	0
3	IDS	A	803	16/17	0.97	0.09	-1.30	27,28,30,31	0
3	IDS	A	805	16/17	0.93	0.11	-1.34	38,43,56,57	0
3	SGN	A	802	19/20	0.98	0.09	-1.37	26,28,32,34	0

## 6.4 Ligands [i](#)

In the following table, the Atoms column lists the number of modelled atoms in the group and the number defined in the chemical component dictionary. LLDF column lists the quality of electron density of the group with respect to its neighbouring residues in protein, DNA or RNA chains. The B-factors column lists the minimum, median, 95<sup>th</sup> percentile and maximum values of B factors of atoms in the group. The column labelled 'Q< 0.9' lists the number of atoms with occupancy less than 0.9.

Mol	Type	Chain	Res	Atoms	RSCC	RSR	LLDF	B-factors(Å <sup>2</sup> )	Q<0.9
2	UAP	A	801	15/16	0.98	0.11	-0.27	25,26,30,31	0
2	UAP	B	801	15/16	0.97	0.10	-0.48	27,31,36,38	0

## 6.5 Other polymers [i](#)

There are no such residues in this entry.