



Full wwPDB X-ray Structure Validation Report ⓘ

Jan 31, 2016 – 09:39 PM GMT

PDB ID : 1Q0C
Title : Anerobic Substrate Complex of Homoproteocatechuate 2,3-Dioxygenase from *Brevibacterium fuscum*. (Complex with 3,4-Dihydroxyphenylacetate)
Authors : Vetting, M.W.; Wackett, L.P.; Que, L.; Lipscomb, J.D.; Ohlendorf, D.H.
Deposited on : 2003-07-15
Resolution : 2.10 Å(reported)

This is a Full wwPDB X-ray Structure Validation Report for a publicly released PDB entry.
We welcome your comments at validation@mail.wwpdb.org
A user guide is available at
<http://wwpdb.org/validation/2016/XrayValidationReportHelp>
with specific help available everywhere you see the ⓘ symbol.

The following versions of software and data (see [references ⓘ](#)) were used in the production of this report:

MolProbity : 4.02b-467
Mogul : 1.7 (RC4), CSD as536be (2015)
Xtriage (Phenix) : 1.9-1692
EDS : rb-20026688
Percentile statistics : 20151230.v01 (using entries in the PDB archive December 30th 2015)
Refmac : 5.8.0135
CCP4 : 6.5.0
Ideal geometry (proteins) : Engh & Huber (2001)
Ideal geometry (DNA, RNA) : Parkinson et al. (1996)
Validation Pipeline (wwPDB-VP) : trunk26865

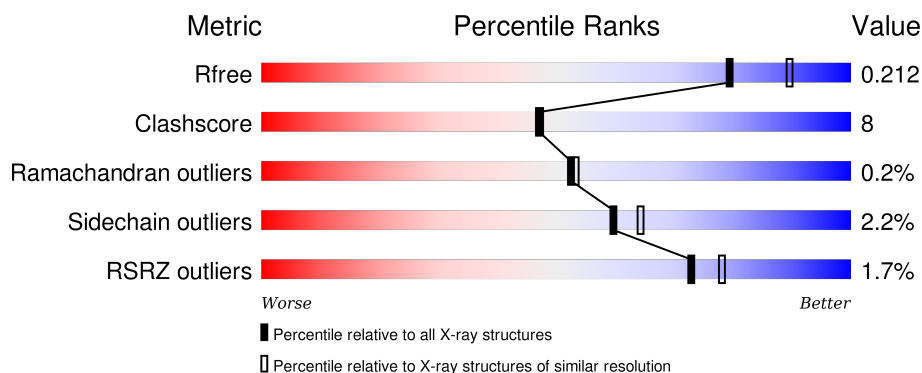
1 Overall quality at a glance

The following experimental techniques were used to determine the structure:

X-RAY DIFFRACTION

The reported resolution of this entry is 2.10 Å.

Percentile scores (ranging between 0-100) for global validation metrics of the entry are shown in the following graphic. The table shows the number of entries on which the scores are based.



Metric	Whole archive (#Entries)	Similar resolution (#Entries, resolution range(Å))
R_{free}	91344	3939 (2.10-2.10)
Clashscore	102246	4460 (2.10-2.10)
Ramachandran outliers	100387	4413 (2.10-2.10)
Sidechain outliers	100360	4414 (2.10-2.10)
RSRZ outliers	91569	3948 (2.10-2.10)

The table below summarises the geometric issues observed across the polymeric chains and their fit to the electron density. The red, orange, yellow and green segments on the lower bar indicate the fraction of residues that contain outliers for ≥ 3 , 2, 1 and 0 types of geometric quality criteria. A grey segment represents the fraction of residues that are not modelled. The numeric value for each fraction is indicated below the corresponding segment, with a dot representing fractions $\leq 5\%$. The upper red bar (where present) indicates the fraction of residues that have poor fit to the electron density. The numeric value is given above the bar.

Mol	Chain	Length	Quality of chain
1	A	365	<div> <div>2%</div> <div> <div></div> <div>71%</div> <div>15%</div> <div>•</div> <div>13%</div> </div> </div>
1	B	365	<div> <div>3%</div> <div> <div></div> <div>70%</div> <div>16%</div> <div>•</div> <div>13%</div> </div> </div>
1	C	365	<div> <div></div> <div> <div></div> <div>71%</div> <div>15%</div> <div>••</div> <div>13%</div> </div> </div>
1	D	365	<div> <div>%</div> <div> <div></div> <div>75%</div> <div>12%</div> <div>•</div> <div>13%</div> </div> </div>

2 Entry composition

There are 4 unique types of molecules in this entry. The entry contains 10829 atoms, of which 0 are hydrogens and 0 are deuteriums.

In the tables below, the ZeroOcc column contains the number of atoms modelled with zero occupancy, the AltConf column contains the number of residues with at least one atom in alternate conformation and the Trace column contains the number of residues modelled with at most 2 atoms.

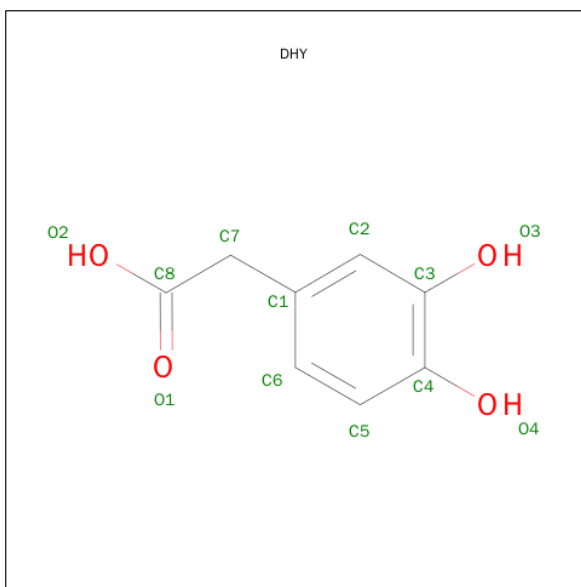
- Molecule 1 is a protein called homoprotocatechuate 2,3-dioxygenase.

Mol	Chain	Residues	Atoms					ZeroOcc	AltConf	Trace
1	A	319	Total	C	N	O	S	0	0	0
			2601	1648	459	487	7			
1	B	319	Total	C	N	O	S	0	0	0
			2601	1648	459	487	7			
1	C	319	Total	C	N	O	S	0	0	0
			2601	1648	459	487	7			
1	D	319	Total	C	N	O	S	0	0	0
			2601	1648	459	487	7			

- Molecule 2 is FE (III) ION (three-letter code: FE) (formula: Fe).

Mol	Chain	Residues	Atoms		ZeroOcc	AltConf
2	B	1	Total	Fe	0	0
			1	1		
2	A	1	Total	Fe	0	0
			1	1		
2	D	1	Total	Fe	0	0
			1	1		
2	C	1	Total	Fe	0	0
			1	1		

- Molecule 3 is 2-(3,4-DIHYDROXYPHENYL)ACETIC ACID (three-letter code: DHY) (formula: C₈H₈O₄).



Mol	Chain	Residues	Atoms			ZeroOcc	AltConf
3	A	1	Total	C	O	0	0
			12	8	4		
3	B	1	Total	C	O	0	0
			12	8	4		
3	C	1	Total	C	O	0	0
			12	8	4		
3	D	1	Total	C	O	0	0
			12	8	4		

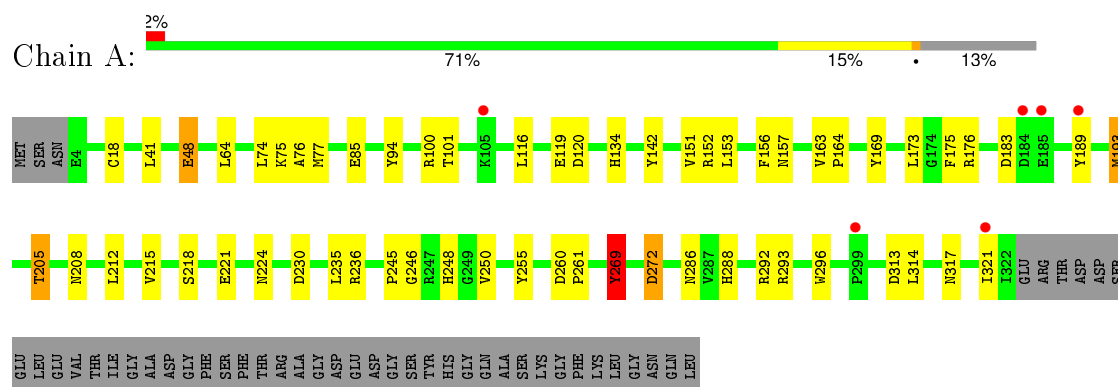
- Molecule 4 is water.

Mol	Chain	Residues	Atoms		ZeroOcc	AltConf
4	A	84	Total	O	0	0
			84	84		
4	B	67	Total	O	0	0
			67	67		
4	C	107	Total	O	0	0
			107	107		
4	D	115	Total	O	0	0
			115	115		

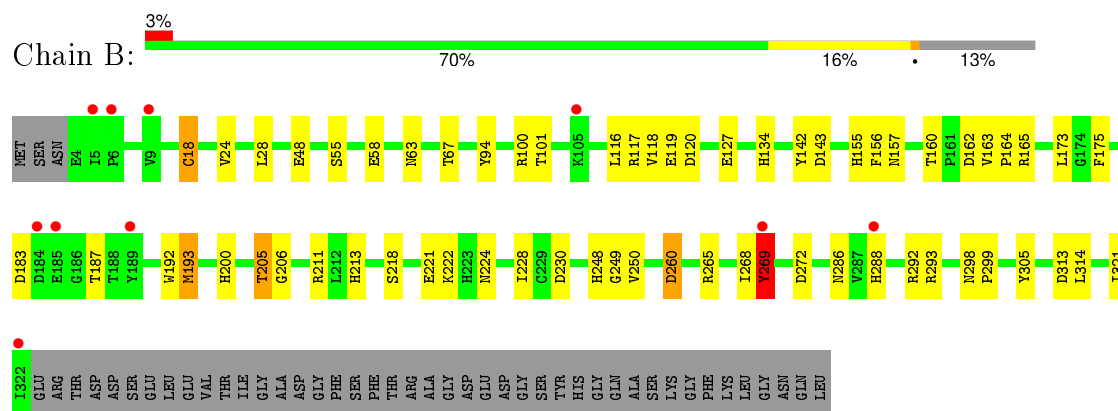
3 Residue-property plots [i](#)

These plots are drawn for all protein, RNA and DNA chains in the entry. The first graphic for a chain summarises the proportions of errors displayed in the second graphic. The second graphic shows the sequence view annotated by issues in geometry and electron density. Residues are color-coded according to the number of geometric quality criteria for which they contain at least one outlier: green = 0, yellow = 1, orange = 2 and red = 3 or more. A red dot above a residue indicates a poor fit to the electron density ($RSRZ > 2$). Stretches of 2 or more consecutive residues without any outlier are shown as a green connector. Residues present in the sample, but not in the model, are shown in grey.

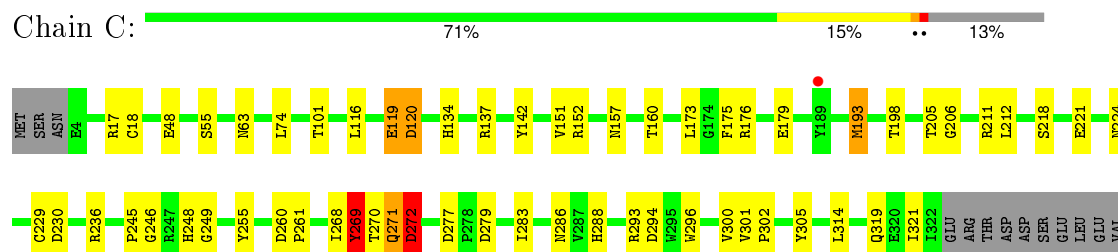
- Molecule 1: homoprotocatechuate 2,3-dioxygenase



- Molecule 1: homoprotocatechuate 2,3-dioxygenase

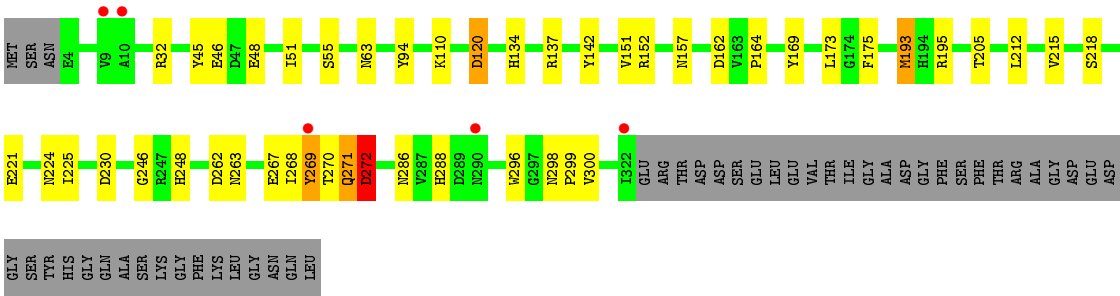


- Molecule 1: homoprotocatechuate 2,3-dioxygenase



THR
ILE
GLY
ALA
ASP
GLY
PHE
SER
PHE
THR
ARG
ALA
GLY
ASP
GLU
ASP
GLY
SER
TYR
HIS
GLY
GLN
ALA
SER
LYS
GLY
PHE
LYS
LEU
GLY
ASN
GLN
LEU

• Molecule 1: homoprotocatechuate 2,3-dioxygenase



4 Data and refinement statistics

Property	Value	Source
Space group	I 41	Depositor
Cell constants a, b, c, α , β , γ	157.00Å 157.00Å 122.30Å 90.00° 90.00° 90.00°	Depositor
Resolution (Å)	20.00 – 2.10 41.02 – 2.11	Depositor EDS
% Data completeness (in resolution range)	96.0 (20.00-2.10) 97.4 (41.02-2.11)	Depositor EDS
R_{merge}	0.05	Depositor
R_{sym}	0.05	Depositor
$\langle I/\sigma(I) \rangle$ ¹	2.89 (at 2.10Å)	Xtriage
Refinement program	CNS 1.0	Depositor
R, R_{free}	0.170 , 0.234 0.170 , 0.212	Depositor DCC
R_{free} test set	4147 reflections (5.01%)	DCC
Wilson B-factor (Å ²)	36.9	Xtriage
Anisotropy	0.066	Xtriage
Bulk solvent k_{sol} (e/Å ³), B_{sol} (Å ²)	0.30 , 44.0	EDS
Estimated twinning fraction	0.004 for -k,-h,-l	Xtriage
L-test for twinning ²	$\langle L \rangle = 0.51$, $\langle L^2 \rangle = 0.35$	Xtriage
Outliers	3 of 82929 reflections (0.004%)	Xtriage
F_o, F_c correlation	0.97	EDS
Total number of atoms	10829	wwPDB-VP
Average B, all atoms (Å ²)	38.0	wwPDB-VP

Xtriage's analysis on translational NCS is as follows: *The largest off-origin peak in the Patterson function is 2.85% of the height of the origin peak. No significant pseudotranslation is detected.*

¹Intensities estimated from amplitudes.

²Theoretical values of $\langle |L| \rangle$, $\langle L^2 \rangle$ for acentric reflections are 0.5, 0.375 respectively for untwinned datasets, and 0.333, 0.2 for perfectly twinned datasets.

5 Model quality [i](#)

5.1 Standard geometry [i](#)

Bond lengths and bond angles in the following residue types are not validated in this section: FE, DHY

The Z score for a bond length (or angle) is the number of standard deviations the observed value is removed from the expected value. A bond length (or angle) with $|Z| > 5$ is considered an outlier worth inspection. RMSZ is the root-mean-square of all Z scores of the bond lengths (or angles).

Mol	Chain	Bond lengths		Bond angles	
		RMSZ	# $ Z > 5$	RMSZ	# $ Z > 5$
1	A	0.73	1/2672 (0.0%)	0.90	4/3634 (0.1%)
1	B	0.73	2/2672 (0.1%)	0.93	7/3634 (0.2%)
1	C	0.84	2/2672 (0.1%)	0.97	10/3634 (0.3%)
1	D	0.81	0/2672	0.93	5/3634 (0.1%)
All	All	0.78	5/10688 (0.0%)	0.93	26/14536 (0.2%)

Chiral center outliers are detected by calculating the chiral volume of a chiral center and verifying if the center is modelled as a planar moiety or with the opposite hand. A planarity outlier is detected by checking planarity of atoms in a peptide group, atoms in a mainchain group or atoms of a sidechain that are expected to be planar.

Mol	Chain	#Chirality outliers	#Planarity outliers
1	A	0	1
1	C	0	1
All	All	0	2

All (5) bond length outliers are listed below:

Mol	Chain	Res	Type	Atoms	Z	Observed(Å)	Ideal(Å)
1	C	18	CYS	CB-SG	-6.18	1.71	1.82
1	B	269	TYR	CE1-CZ	5.78	1.46	1.38
1	B	18	CYS	CB-SG	-5.52	1.72	1.81
1	C	229	CYS	CB-SG	-5.18	1.73	1.81
1	A	269	TYR	CE1-CZ	5.04	1.45	1.38

All (26) bond angle outliers are listed below:

Mol	Chain	Res	Type	Atoms	Z	Observed(°)	Ideal(°)
1	B	269	TYR	CB-CG-CD2	-7.00	116.80	121.00
1	D	269	TYR	CA-CB-CG	6.50	125.75	113.40

Continued on next page...

Continued from previous page...

Mol	Chain	Res	Type	Atoms	Z	Observed(°)	Ideal(°)
1	B	269	TYR	N-CA-CB	-6.37	99.13	110.60
1	D	272	ASP	CB-CG-OD1	-6.31	112.62	118.30
1	A	272	ASP	CB-CG-OD1	-6.18	112.74	118.30
1	C	137	ARG	CG-CD-NE	-6.08	99.04	111.80
1	B	260	ASP	CB-CG-OD1	5.89	123.60	118.30
1	C	17	ARG	NE-CZ-NH2	-5.83	117.39	120.30
1	B	269	TYR	CA-CB-CG	5.75	124.32	113.40
1	B	313	ASP	CB-CG-OD1	5.71	123.44	118.30
1	C	137	ARG	NE-CZ-NH2	-5.61	117.50	120.30
1	C	120	ASP	CB-CG-OD2	-5.60	113.26	118.30
1	A	269	TYR	CA-CB-CG	5.55	123.95	113.40
1	C	272	ASP	CB-CG-OD1	-5.54	113.31	118.30
1	D	269	TYR	N-CA-CB	-5.54	100.63	110.60
1	C	269	TYR	N-CA-CB	-5.52	100.66	110.60
1	C	119	GLU	N-CA-C	-5.51	96.12	111.00
1	B	249	GLY	N-CA-C	-5.48	99.41	113.10
1	C	120	ASP	CB-CG-OD1	5.43	123.19	118.30
1	A	269	TYR	N-CA-CB	-5.32	101.03	110.60
1	C	277	ASP	CB-CG-OD1	5.23	123.00	118.30
1	B	260	ASP	CB-CG-OD2	-5.07	113.74	118.30
1	D	120	ASP	CB-CG-OD1	5.05	122.85	118.30
1	D	137	ARG	NE-CZ-NH2	-5.04	117.78	120.30
1	A	153	LEU	N-CA-C	-5.00	97.50	111.00
1	C	249	GLY	N-CA-C	-5.00	100.60	113.10

There are no chirality outliers.

All (2) planarity outliers are listed below:

Mol	Chain	Res	Type	Group
1	A	269	TYR	Sidechain
1	C	269	TYR	Sidechain

5.2 Too-close contacts ⓘ

In the following table, the Non-H and H(model) columns list the number of non-hydrogen atoms and hydrogen atoms in the chain respectively. The H(added) column lists the number of hydrogen atoms added and optimized by MolProbity. The Clashes column lists the number of clashes within the asymmetric unit, whereas Symm-Clashes lists symmetry related clashes.

Mol	Chain	Non-H	H(model)	H(added)	Clashes	Symm-Clashes
1	A	2601	0	2485	38	0

Continued on next page...

Continued from previous page...

Mol	Chain	Non-H	H(model)	H(added)	Clashes	Symm-Clashes
1	B	2601	0	2485	45	0
1	C	2601	0	2485	44	0
1	D	2601	0	2485	34	0
2	A	1	0	0	0	0
2	B	1	0	0	0	0
2	C	1	0	0	0	0
2	D	1	0	0	0	0
3	A	12	0	5	0	0
3	B	12	0	5	1	0
3	C	12	0	5	2	0
3	D	12	0	5	1	0
4	A	84	0	0	2	0
4	B	67	0	0	1	0
4	C	107	0	0	1	0
4	D	115	0	0	2	0
All	All	10829	0	9960	154	0

The all-atom clashscore is defined as the number of clashes found per 1000 atoms (including hydrogen atoms). The all-atom clashscore for this structure is 8.

All (154) close contacts within the same asymmetric unit are listed below, sorted by their clash magnitude.

Atom-1	Atom-2	Interatomic distance (Å)	Clash overlap (Å)
1:C:271:GLN:HG2	1:C:271:GLN:O	1.73	0.88
1:D:271:GLN:HG2	1:D:271:GLN:O	1.74	0.86
1:C:286:ASN:ND2	1:C:288:HIS:H	1.73	0.85
1:D:286:ASN:ND2	1:D:288:HIS:H	1.78	0.81
1:D:48:GLU:H	1:D:48:GLU:CD	1.84	0.80
1:A:286:ASN:ND2	1:A:288:HIS:H	1.78	0.80
1:B:55:SER:H	1:B:63:ASN:HD22	1.27	0.79
1:A:48:GLU:CD	1:A:48:GLU:H	1.89	0.76
1:C:74:LEU:HD13	1:C:212:LEU:HD22	1.72	0.70
1:B:119:GLU:HG3	1:B:314:LEU:HG	1.76	0.67
1:D:272:ASP:HB2	4:D:1063:HOH:O	1.95	0.67
1:D:110:LYS:HD3	4:D:1080:HOH:O	1.95	0.67
1:B:157:ASN:OD1	1:B:205:THR:HG23	1.96	0.66
1:C:48:GLU:CD	1:C:48:GLU:H	1.98	0.65
1:B:55:SER:H	1:B:63:ASN:ND2	1.95	0.65
1:C:221:GLU:H	1:C:224:ASN:HD22	1.43	0.65
1:A:221:GLU:H	1:A:224:ASN:HD22	1.43	0.63
1:A:101:THR:HB	1:A:116:LEU:HD11	1.81	0.63

Continued on next page...

Continued from previous page...

Atom-1	Atom-2	Interatomic distance (Å)	Clash overlap (Å)
1:B:268:ILE:N	1:B:268:ILE:HD12	2.14	0.62
1:C:255:TYR:OH	1:C:294:ASP:OD2	2.15	0.62
1:D:157:ASN:OD1	1:D:205:THR:HG23	2.00	0.61
1:C:248:HIS:ND1	3:C:999:DHY:O2	2.34	0.60
1:C:157:ASN:OD1	1:C:205:THR:HG23	2.01	0.60
1:C:246:GLY:HA2	1:C:296:TRP:CZ3	2.38	0.59
1:A:157:ASN:OD1	1:A:205:THR:HG23	2.01	0.59
1:A:176:ARG:HH11	1:A:176:ARG:HG3	1.66	0.58
1:D:221:GLU:H	1:D:224:ASN:HD22	1.51	0.57
1:D:268:ILE:N	1:D:268:ILE:HD12	2.19	0.57
1:A:218:SER:HA	1:A:269:TYR:O	2.03	0.57
1:B:48:GLU:H	1:B:48:GLU:CD	2.08	0.56
1:B:18:CYS:HB2	1:B:156:PHE:CE2	2.41	0.56
1:D:271:GLN:O	1:D:271:GLN:CG	2.48	0.56
1:D:162:ASP:OD1	1:D:164:PRO:HD2	2.05	0.56
1:D:55:SER:H	1:D:63:ASN:HD22	1.54	0.55
1:B:230:ASP:HB3	1:C:142:TYR:CG	2.42	0.55
1:A:175:PHE:HB3	1:A:193:MET:HB2	1.88	0.54
1:B:248:HIS:HB3	1:B:250:VAL:O	2.08	0.54
1:C:151:VAL:HG23	1:C:152:ARG:HG3	1.90	0.53
1:B:101:THR:HG22	1:B:118:VAL:HG12	1.91	0.53
1:C:55:SER:H	1:C:63:ASN:HD22	1.56	0.53
1:B:221:GLU:H	1:B:224:ASN:HD22	1.55	0.53
1:B:218:SER:HA	1:B:269:TYR:O	2.08	0.53
1:C:176:ARG:HH11	1:C:176:ARG:HG3	1.73	0.53
1:A:142:TYR:CG	1:D:230:ASP:HB3	2.44	0.52
1:C:236:ARG:NH1	4:C:1106:HOH:O	2.37	0.52
1:A:230:ASP:HB3	1:D:142:TYR:CG	2.44	0.52
1:C:175:PHE:HB3	1:C:193:MET:HB2	1.91	0.52
1:A:119:GLU:HG3	1:A:314:LEU:HG	1.90	0.52
1:C:176:ARG:HG3	1:C:176:ARG:NH1	2.25	0.52
1:A:75:LYS:O	1:A:76:ALA:HB2	2.09	0.51
1:B:286:ASN:ND2	1:B:288:HIS:H	2.07	0.51
1:C:319:GLN:OE1	1:C:319:GLN:HA	2.10	0.51
1:C:270:THR:O	1:C:271:GLN:HB3	2.10	0.51
1:B:117:ARG:HG2	1:B:127:GLU:HB2	1.92	0.51
1:B:101:THR:HB	1:B:116:LEU:HD11	1.92	0.51
1:C:248:HIS:CE1	3:C:999:DHY:O2	2.64	0.51
1:A:183:ASP:HB3	1:A:189:TYR:CE1	2.46	0.51
1:C:179:GLU:HG2	1:C:283:ILE:HB	1.92	0.50
1:C:286:ASN:HD22	1:C:288:HIS:H	1.55	0.50

Continued on next page...

Continued from previous page...

Atom-1	Atom-2	Interatomic distance (Å)	Clash overlap (Å)
1:A:157:ASN:OD1	1:A:205:THR:CG2	2.60	0.49
1:B:100:ARG:HG2	1:B:314:LEU:HD12	1.94	0.49
1:D:94:TYR:OH	1:D:173:LEU:HD11	2.12	0.49
1:A:77:MET:HE3	1:A:156:PHE:CG	2.47	0.49
1:C:245:PRO:HA	1:C:255:TYR:O	2.12	0.49
1:A:163:VAL:HB	1:A:164:PRO:HD3	1.94	0.49
1:D:175:PHE:HB3	1:D:193:MET:HB2	1.94	0.49
1:B:58:GLU:HB2	1:B:63:ASN:HD21	1.78	0.49
1:A:176:ARG:NH1	1:A:176:ARG:HG3	2.23	0.49
1:B:286:ASN:ND2	1:B:288:HIS:HB2	2.28	0.49
1:A:248:HIS:HB3	1:A:250:VAL:O	2.13	0.49
1:B:24:VAL:HA	1:B:67:THR:O	2.13	0.49
1:A:18:CYS:HB2	1:A:156:PHE:CE2	2.47	0.49
1:C:218:SER:HA	1:C:269:TYR:O	2.13	0.49
1:A:246:GLY:HA2	1:A:296:TRP:CZ3	2.48	0.49
1:B:250:VAL:HB	3:B:999:DHY:H6	1.95	0.49
1:D:55:SER:H	1:D:63:ASN:ND2	2.11	0.48
1:B:175:PHE:HB3	1:B:193:MET:HB2	1.95	0.48
1:A:74:LEU:HD13	1:A:212:LEU:HD22	1.94	0.48
1:B:230:ASP:HB3	1:C:142:TYR:CD2	2.48	0.47
1:C:119:GLU:HG3	1:C:314:LEU:HG	1.95	0.47
1:C:279:ASP:OD2	1:D:134:HIS:HE1	1.98	0.47
1:D:246:GLY:HA2	1:D:296:TRP:CZ3	2.50	0.47
1:B:286:ASN:HD21	1:B:288:HIS:HB2	1.79	0.47
1:D:248:HIS:ND1	3:D:999:DHY:O2	2.47	0.46
1:B:94:TYR:OH	1:B:173:LEU:HD11	2.15	0.46
1:C:300:VAL:CG2	1:C:305:TYR:CE2	2.98	0.46
1:C:300:VAL:HG22	1:C:305:TYR:CE2	2.51	0.45
1:D:212:LEU:HD21	1:D:215:VAL:HG23	1.98	0.45
1:C:221:GLU:H	1:C:224:ASN:ND2	2.12	0.45
1:C:55:SER:H	1:C:63:ASN:ND2	2.13	0.45
1:C:301:VAL:HG12	1:C:302:PRO:HD2	1.98	0.45
1:B:157:ASN:OD1	1:B:205:THR:CG2	2.63	0.45
1:B:162:ASP:CG	1:B:165:ARG:HB2	2.36	0.45
1:B:293:ARG:HD3	1:B:305:TYR:OH	2.17	0.45
1:C:279:ASP:OD2	1:D:134:HIS:CE1	2.70	0.45
1:C:211:ARG:HD3	1:C:321:ILE:HD13	1.99	0.45
1:B:18:CYS:HB2	1:B:156:PHE:CZ	2.51	0.45
1:B:192:TRP:CE2	1:B:250:VAL:HG11	2.52	0.45
1:D:262:ASP:O	1:D:263:ASN:HB2	2.16	0.45
1:D:157:ASN:OD1	1:D:205:THR:CG2	2.65	0.45

Continued on next page...

Continued from previous page...

Atom-1	Atom-2	Interatomic distance (Å)	Clash overlap (Å)
1:A:85:GLU:CD	1:A:85:GLU:H	2.19	0.44
1:D:286:ASN:ND2	1:D:288:HIS:HB2	2.32	0.44
1:B:183:ASP:OD2	1:B:187:THR:HB	2.18	0.44
1:A:94:TYR:OH	1:A:173:LEU:HD11	2.18	0.44
1:C:268:ILE:HD12	1:C:268:ILE:N	2.33	0.44
1:B:142:TYR:CG	1:C:230:ASP:HB3	2.52	0.44
1:C:198:THR:HB	1:C:272:ASP:OD2	2.17	0.44
1:B:192:TRP:CD2	1:B:250:VAL:HG11	2.53	0.44
1:B:162:ASP:OD1	1:B:164:PRO:HD2	2.17	0.44
1:C:248:HIS:HA	1:C:293:ARG:O	2.18	0.44
1:B:28:LEU:HD12	1:B:28:LEU:HA	1.87	0.44
1:B:160:THR:O	1:B:206:GLY:HA2	2.18	0.43
1:D:270:THR:O	1:D:271:GLN:HB3	2.18	0.43
1:D:45:TYR:CD1	1:D:46:GLU:N	2.87	0.43
1:B:228:ILE:HD13	1:B:268:ILE:HG12	2.00	0.43
1:A:245:PRO:HA	1:A:255:TYR:O	2.19	0.43
1:D:195:ARG:HD2	1:D:195:ARG:HA	1.81	0.43
1:A:64:LEU:HD12	1:A:64:LEU:HA	1.82	0.43
1:A:176:ARG:HD2	4:A:1039:HOH:O	2.17	0.43
1:A:205:THR:HG22	4:A:1054:HOH:O	2.18	0.42
1:A:313:ASP:OD2	1:A:317:ASN:HB2	2.19	0.42
1:A:100:ARG:HG2	1:A:314:LEU:HD12	2.00	0.42
1:A:260:ASP:HB2	1:A:261:PRO:CD	2.49	0.42
1:C:260:ASP:HB2	1:C:261:PRO:CD	2.49	0.42
1:D:218:SER:HA	1:D:269:TYR:O	2.20	0.42
1:B:298:ASN:HB3	1:B:299:PRO:HD2	2.01	0.42
1:A:286:ASN:ND2	1:A:288:HIS:HB2	2.34	0.42
1:D:32:ARG:HB2	1:D:51:ILE:CD1	2.48	0.42
1:C:301:VAL:HA	1:C:302:PRO:HD3	1.74	0.42
1:D:151:VAL:HG23	1:D:152:ARG:HG3	2.01	0.42
1:D:267:GLU:C	1:D:268:ILE:HD12	2.40	0.42
1:B:292:ARG:HG3	1:B:293:ARG:HG3	2.01	0.42
1:B:222:LYS:NZ	4:B:1030:HOH:O	2.52	0.42
1:B:101:THR:HG22	1:B:118:VAL:CG1	2.50	0.42
1:B:211:ARG:HD3	1:B:321:ILE:HD13	2.02	0.42
1:B:213:HIS:O	1:B:265:ARG:HB3	2.20	0.42
1:C:301:VAL:HG23	1:C:301:VAL:H	1.50	0.41
1:C:160:THR:O	1:C:206:GLY:HA2	2.20	0.41
1:B:143:ASP:N	1:B:143:ASP:OD1	2.53	0.41
1:A:212:LEU:HD21	1:A:215:VAL:HG23	2.02	0.41
1:A:208:ASN:HB3	1:A:321:ILE:CG2	2.49	0.41

Continued on next page...

Continued from previous page...

Atom-1	Atom-2	Interatomic distance (Å)	Clash overlap (Å)
1:A:151:VAL:HG23	1:A:152:ARG:HG3	2.02	0.41
1:B:163:VAL:N	1:B:164:PRO:CD	2.84	0.41
1:D:225:ILE:HG12	1:D:268:ILE:HG22	2.02	0.41
1:B:155:HIS:CE1	1:B:200:HIS:CE1	3.09	0.41
1:A:292:ARG:HG3	1:A:293:ARG:HG2	2.03	0.41
1:A:260:ASP:CB	1:A:261:PRO:CD	2.99	0.41
1:A:235:LEU:O	1:A:236:ARG:HB2	2.21	0.40
1:C:157:ASN:OD1	1:C:205:THR:CG2	2.70	0.40
1:A:41:LEU:HD23	1:A:41:LEU:HA	1.88	0.40
1:D:298:ASN:HB3	1:D:299:PRO:HD2	2.03	0.40
1:C:48:GLU:CD	1:C:48:GLU:N	2.72	0.40
1:D:32:ARG:HG2	1:D:32:ARG:HH11	1.86	0.40
1:C:101:THR:HB	1:C:116:LEU:HD11	2.03	0.40

There are no symmetry-related clashes.

5.3 Torsion angles [i](#)

5.3.1 Protein backbone [i](#)

In the following table, the Percentiles column shows the percent Ramachandran outliers of the chain as a percentile score with respect to all X-ray entries followed by that with respect to entries of similar resolution.

The Analysed column shows the number of residues for which the backbone conformation was analysed, and the total number of residues.

Mol	Chain	Analysed	Favoured	Allowed	Outliers	Percentiles	
1	A	317/365 (87%)	305 (96%)	12 (4%)	0	100	100
1	B	317/365 (87%)	303 (96%)	14 (4%)	0	100	100
1	C	317/365 (87%)	305 (96%)	11 (4%)	1 (0%)	46	45
1	D	317/365 (87%)	307 (97%)	9 (3%)	1 (0%)	46	45
All	All	1268/1460 (87%)	1220 (96%)	46 (4%)	2 (0%)	52	53

All (2) Ramachandran outliers are listed below:

Mol	Chain	Res	Type
1	C	271	GLN
1	D	271	GLN

5.3.2 Protein sidechains ⓘ

In the following table, the Percentiles column shows the percent sidechain outliers of the chain as a percentile score with respect to all X-ray entries followed by that with respect to entries of similar resolution.

The Analysed column shows the number of residues for which the sidechain conformation was analysed, and the total number of residues.

Mol	Chain	Analysed	Rotameric	Outliers	Percentiles	
1	A	277/313 (88%)	270 (98%)	7 (2%)	55	59
1	B	277/313 (88%)	270 (98%)	7 (2%)	55	59
1	C	277/313 (88%)	272 (98%)	5 (2%)	66	72
1	D	277/313 (88%)	272 (98%)	5 (2%)	66	72
All	All	1108/1252 (88%)	1084 (98%)	24 (2%)	60	64

All (24) residues with a non-rotameric sidechain are listed below:

Mol	Chain	Res	Type
1	A	48	GLU
1	A	120	ASP
1	A	134	HIS
1	A	169	TYR
1	A	193	MET
1	A	205	THR
1	A	272	ASP
1	B	120	ASP
1	B	134	HIS
1	B	193	MET
1	B	205	THR
1	B	260	ASP
1	B	269	TYR
1	B	272	ASP
1	C	120	ASP
1	C	134	HIS
1	C	173	LEU
1	C	193	MET
1	C	272	ASP
1	D	120	ASP
1	D	169	TYR
1	D	193	MET
1	D	272	ASP
1	D	300	VAL

Some sidechains can be flipped to improve hydrogen bonding and reduce clashes. All (23) such sidechains are listed below:

Mol	Chain	Res	Type
1	A	63	ASN
1	A	95	GLN
1	A	134	HIS
1	A	158	GLN
1	A	224	ASN
1	A	286	ASN
1	B	63	ASN
1	B	95	GLN
1	B	134	HIS
1	B	224	ASN
1	B	286	ASN
1	C	63	ASN
1	C	95	GLN
1	C	134	HIS
1	C	224	ASN
1	C	286	ASN
1	C	288	HIS
1	C	291	GLN
1	D	63	ASN
1	D	95	GLN
1	D	134	HIS
1	D	224	ASN
1	D	286	ASN

5.3.3 RNA ⓘ

There are no RNA molecules in this entry.

5.4 Non-standard residues in protein, DNA, RNA chains ⓘ

There are no non-standard protein/DNA/RNA residues in this entry.

5.5 Carbohydrates ⓘ

There are no carbohydrates in this entry.

5.6 Ligand geometry

Of 8 ligands modelled in this entry, 4 are monoatomic - leaving 4 for Mogul analysis.

In the following table, the Counts columns list the number of bonds (or angles) for which Mogul statistics could be retrieved, the number of bonds (or angles) that are observed in the model and the number of bonds (or angles) that are defined in the chemical component dictionary. The Link column lists molecule types, if any, to which the group is linked. The Z score for a bond length (or angle) is the number of standard deviations the observed value is removed from the expected value. A bond length (or angle) with $|Z| > 2$ is considered an outlier worth inspection. RMSZ is the root-mean-square of all Z scores of the bond lengths (or angles).

Mol	Type	Chain	Res	Link	Bond lengths			Bond angles		
					Counts	RMSZ	# $ Z > 2$	Counts	RMSZ	# $ Z > 2$
3	DHY	A	999	2	9,12,12	2.14	6 (66%)	13,16,16	2.06	5 (38%)
3	DHY	B	999	2	9,12,12	2.19	5 (55%)	13,16,16	2.35	6 (46%)
3	DHY	C	999	2	9,12,12	2.48	6 (66%)	13,16,16	1.99	5 (38%)
3	DHY	D	999	2	9,12,12	1.82	5 (55%)	13,16,16	2.04	5 (38%)

In the following table, the Chirals column lists the number of chiral outliers, the number of chiral centers analysed, the number of these observed in the model and the number defined in the chemical component dictionary. Similar counts are reported in the Torsion and Rings columns. '-' means no outliers of that kind were identified.

Mol	Type	Chain	Res	Link	Chirals	Torsions	Rings
3	DHY	A	999	2	-	0/2/4/4	0/1/1/1
3	DHY	B	999	2	-	0/2/4/4	0/1/1/1
3	DHY	C	999	2	-	0/2/4/4	0/1/1/1
3	DHY	D	999	2	-	0/2/4/4	0/1/1/1

All (22) bond length outliers are listed below:

Mol	Chain	Res	Type	Atoms	Z	Observed(Å)	Ideal(Å)
3	D	999	DHY	C2-C1	2.01	1.42	1.39
3	A	999	DHY	C5-C4	2.08	1.43	1.39
3	A	999	DHY	C4-C3	2.10	1.43	1.40
3	D	999	DHY	C6-C1	2.11	1.43	1.38
3	D	999	DHY	O4-C4	2.20	1.41	1.36
3	B	999	DHY	O4-C4	2.23	1.41	1.36
3	D	999	DHY	C4-C3	2.31	1.44	1.40
3	C	999	DHY	C5-C4	2.34	1.43	1.39
3	A	999	DHY	O4-C4	2.37	1.41	1.36
3	D	999	DHY	C6-C5	2.41	1.43	1.38
3	A	999	DHY	C2-C3	2.42	1.42	1.38

Continued on next page...

Continued from previous page...

Mol	Chain	Res	Type	Atoms	Z	Observed(Å)	Ideal(Å)
3	A	999	DHY	C2-C1	2.51	1.43	1.39
3	B	999	DHY	C5-C4	2.65	1.44	1.39
3	C	999	DHY	C6-C1	2.70	1.44	1.38
3	A	999	DHY	C6-C5	2.80	1.43	1.38
3	B	999	DHY	C4-C3	2.87	1.45	1.40
3	C	999	DHY	C2-C3	2.92	1.42	1.38
3	C	999	DHY	C6-C5	3.00	1.44	1.38
3	B	999	DHY	C6-C1	3.04	1.45	1.38
3	C	999	DHY	C2-C1	3.05	1.44	1.39
3	B	999	DHY	C6-C5	3.23	1.44	1.38
3	C	999	DHY	C4-C3	3.38	1.46	1.40

All (21) bond angle outliers are listed below:

Mol	Chain	Res	Type	Atoms	Z	Observed(°)	Ideal(°)
3	B	999	DHY	C7-C1-C2	-3.72	113.00	120.69
3	B	999	DHY	O4-C4-C3	-3.32	109.78	118.44
3	A	999	DHY	O3-C3-C4	-3.14	110.23	118.44
3	D	999	DHY	O3-C3-C4	-3.02	110.56	118.44
3	C	999	DHY	C7-C1-C2	-2.95	114.59	120.69
3	B	999	DHY	O3-C3-C4	-2.84	111.04	118.44
3	A	999	DHY	O4-C4-C3	-2.71	111.38	118.44
3	A	999	DHY	C7-C1-C2	-2.69	115.12	120.69
3	D	999	DHY	O4-C4-C3	-2.65	111.51	118.44
3	C	999	DHY	O3-C3-C4	-2.64	111.54	118.44
3	C	999	DHY	O4-C4-C3	-2.61	111.62	118.44
3	D	999	DHY	C7-C1-C2	-2.59	115.34	120.69
3	B	999	DHY	C6-C5-C4	-2.38	118.05	120.49
3	C	999	DHY	O4-C4-C5	2.93	127.39	119.35
3	D	999	DHY	O4-C4-C5	3.06	127.74	119.35
3	A	999	DHY	O4-C4-C5	3.26	128.30	119.35
3	B	999	DHY	O4-C4-C5	3.59	129.22	119.35
3	C	999	DHY	O3-C3-C2	3.65	129.24	119.42
3	B	999	DHY	O3-C3-C2	3.66	129.27	119.42
3	D	999	DHY	O3-C3-C2	3.81	129.67	119.42
3	A	999	DHY	O3-C3-C2	4.02	130.23	119.42

There are no chirality outliers.

There are no torsion outliers.

There are no ring outliers.

3 monomers are involved in 4 short contacts:

Mol	Chain	Res	Type	Clashes	Symm-Clashes
3	B	999	DHY	1	0
3	C	999	DHY	2	0
3	D	999	DHY	1	0

5.7 Other polymers [i](#)

There are no such residues in this entry.

5.8 Polymer linkage issues [i](#)

There are no chain breaks in this entry.

6 Fit of model and data ⓘ

6.1 Protein, DNA and RNA chains ⓘ

In the following table, the column labelled ‘#RSRZ> 2’ contains the number (and percentage) of RSRZ outliers, followed by percent RSRZ outliers for the chain as percentile scores relative to all X-ray entries and entries of similar resolution. The OWAB column contains the minimum, median, 95th percentile and maximum values of the occupancy-weighted average B-factor per residue. The column labelled ‘Q< 0.9’ lists the number of (and percentage) of residues with an average occupancy less than 0.9.

Mol	Chain	Analysed	<RSRZ>	#RSRZ>2	OWAB(Å ²)	Q<0.9
1	A	319/365 (87%)	-0.18	6 (1%) 70 75	28, 41, 59, 76	0
1	B	319/365 (87%)	-0.12	10 (3%) 52 61	27, 40, 60, 75	0
1	C	319/365 (87%)	-0.36	1 (0%) 94 95	23, 32, 49, 62	0
1	D	319/365 (87%)	-0.26	5 (1%) 74 79	25, 33, 53, 69	0
All	All	1276/1460 (87%)	-0.23	22 (1%) 73 78	23, 37, 57, 76	0

All (22) RSRZ outliers are listed below:

Mol	Chain	Res	Type	RSRZ
1	B	5	ILE	3.6
1	A	321	ILE	3.5
1	B	184	ASP	3.5
1	B	6	PRO	3.1
1	C	189	TYR	3.0
1	B	9	VAL	2.9
1	B	322	ILE	2.9
1	A	184	ASP	2.7
1	A	189	TYR	2.6
1	B	269	TYR	2.6
1	D	9	VAL	2.6
1	B	185	GLU	2.5
1	B	189	TYR	2.4
1	B	288	HIS	2.3
1	A	299	PRO	2.3
1	A	105	LYS	2.3
1	D	322	ILE	2.2
1	B	105	LYS	2.2
1	D	290	ASN	2.1
1	D	10	ALA	2.1
1	A	185	GLU	2.0
1	D	269	TYR	2.0

6.2 Non-standard residues in protein, DNA, RNA chains [i](#)

There are no non-standard protein/DNA/RNA residues in this entry.

6.3 Carbohydrates [i](#)

There are no carbohydrates in this entry.

6.4 Ligands [i](#)

In the following table, the Atoms column lists the number of modelled atoms in the group and the number defined in the chemical component dictionary. LLDF column lists the quality of electron density of the group with respect to its neighbouring residues in protein, DNA or RNA chains. The B-factors column lists the minimum, median, 95th percentile and maximum values of B factors of atoms in the group. The column labelled 'Q< 0.9' lists the number of atoms with occupancy less than 0.9.

Mol	Type	Chain	Res	Atoms	RSCC	RSR	LLDF	B-factors(Å ²)	Q<0.9
3	DHY	C	999	12/12	0.88	0.11	0.50	43,45,46,47	0
3	DHY	A	999	12/12	0.94	0.11	0.38	45,46,50,50	0
3	DHY	B	999	12/12	0.89	0.12	0.22	40,43,51,52	0
3	DHY	D	999	12/12	0.95	0.11	-0.22	42,44,49,50	0
2	FE	A	500	1/1	0.98	0.05	-1.73	43,43,43,43	0
2	FE	D	500	1/1	1.00	0.06	-2.10	37,37,37,37	0
2	FE	C	500	1/1	0.99	0.05	-2.59	34,34,34,34	0
2	FE	B	500	1/1	0.99	0.06	-2.83	42,42,42,42	0

6.5 Other polymers [i](#)

There are no such residues in this entry.