



Full wwPDB X-ray Structure Validation Report ⓘ

Feb 1, 2016 – 07:48 PM GMT

PDB ID : 4Q19
Title : Human dCK C4S-S74E mutant in complex with UDP and the inhibitor 5 {5-(4-[(4,6-DIAMINOPYRIMIDIN-2-YL)SULFANYL]METHYL}-5-PROPYL-1,3-THIAZOL-2-YL)-2-METHOXYPHENOL}
Authors : Nomme, J.; Lavie, A.
Deposited on : 2014-04-03
Resolution : 2.09 Å(reported)

This is a Full wwPDB X-ray Structure Validation Report for a publicly released PDB entry.
We welcome your comments at validation@mail.wwpdb.org
A user guide is available at
<http://wwpdb.org/validation/2016/XrayValidationReportHelp>
with specific help available everywhere you see the ⓘ symbol.

The following versions of software and data (see [references ⓘ](#)) were used in the production of this report:

MolProbity : 4.02b-467
Mogul : 1.7 (RC4), CSD as536be (2015)
Xtriage (Phenix) : 1.9-1692
EDS : rb-20026688
Percentile statistics : 20151230.v01 (using entries in the PDB archive December 30th 2015)
Refmac : 5.8.0135
CCP4 : 6.5.0
Ideal geometry (proteins) : Engh & Huber (2001)
Ideal geometry (DNA, RNA) : Parkinson et al. (1996)
Validation Pipeline (wwPDB-VP) : trunk26865

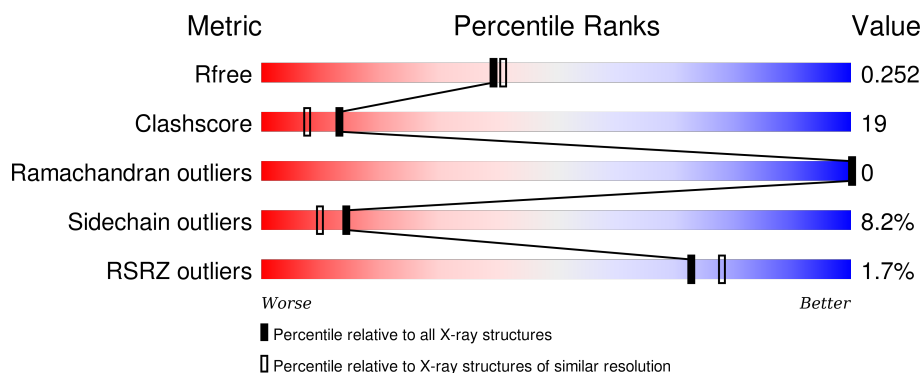
1 Overall quality at a glance

The following experimental techniques were used to determine the structure:

X-RAY DIFFRACTION

The reported resolution of this entry is 2.09 Å.

Percentile scores (ranging between 0-100) for global validation metrics of the entry are shown in the following graphic. The table shows the number of entries on which the scores are based.



Metric	Whole archive (#Entries)	Similar resolution (#Entries, resolution range(Å))
R_{free}	91344	3939 (2.10-2.10)
Clashscore	102246	4460 (2.10-2.10)
Ramachandran outliers	100387	4413 (2.10-2.10)
Sidechain outliers	100360	4414 (2.10-2.10)
RSRZ outliers	91569	3948 (2.10-2.10)

The table below summarises the geometric issues observed across the polymeric chains and their fit to the electron density. The red, orange, yellow and green segments on the lower bar indicate the fraction of residues that contain outliers for ≥ 3 , 2, 1 and 0 types of geometric quality criteria. A grey segment represents the fraction of residues that are not modelled. The numeric value for each fraction is indicated below the corresponding segment, with a dot representing fractions $\leq 5\%$. The upper red bar (where present) indicates the fraction of residues that have poor fit to the electron density. The numeric value is given above the bar.

Mol	Chain	Length	Quality of chain
1	A	280	<div> <div>2%</div> <div>42%</div> <div>35%</div> <div>•</div> <div>19%</div> </div>
1	B	280	<div> <div>%</div> <div>53%</div> <div>28%</div> <div>•</div> <div>18%</div> </div>

2 Entry composition

There are 4 unique types of molecules in this entry. The entry contains 3973 atoms, of which 0 are hydrogens and 0 are deuteriums.

In the tables below, the ZeroOcc column contains the number of atoms modelled with zero occupancy, the AltConf column contains the number of residues with at least one atom in alternate conformation and the Trace column contains the number of residues modelled with at most 2 atoms.

- Molecule 1 is a protein called Deoxycytidine kinase.

Mol	Chain	Residues	Atoms					ZeroOcc	AltConf	Trace
1	A	228	Total	C	N	O	S	0	2	0
			1877	1205	304	360	8			
1	B	230	Total	C	N	O	S	0	1	0
			1889	1213	314	355	7			

There are 50 discrepancies between the modelled and reference sequences:

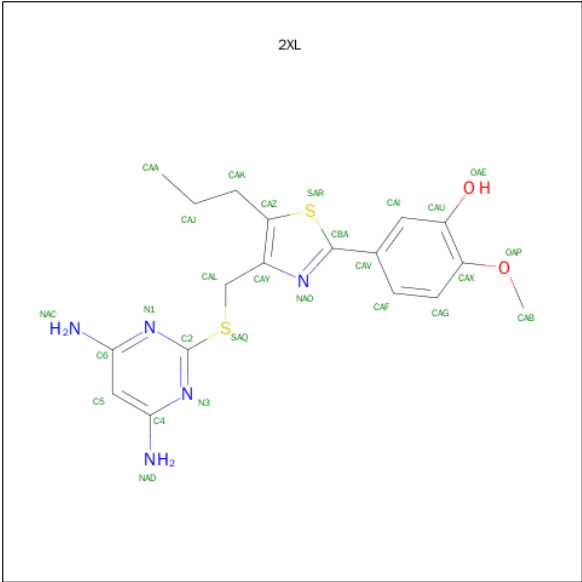
Chain	Residue	Modelled	Actual	Comment	Reference
A	-19	MET	-	EXPRESSION TAG	UNP P27707
A	-18	GLY	-	EXPRESSION TAG	UNP P27707
A	-17	SER	-	EXPRESSION TAG	UNP P27707
A	-16	SER	-	EXPRESSION TAG	UNP P27707
A	-15	HIS	-	EXPRESSION TAG	UNP P27707
A	-14	HIS	-	EXPRESSION TAG	UNP P27707
A	-13	HIS	-	EXPRESSION TAG	UNP P27707
A	-12	HIS	-	EXPRESSION TAG	UNP P27707
A	-11	HIS	-	EXPRESSION TAG	UNP P27707
A	-10	HIS	-	EXPRESSION TAG	UNP P27707
A	-9	SER	-	EXPRESSION TAG	UNP P27707
A	-8	SER	-	EXPRESSION TAG	UNP P27707
A	-7	GLY	-	EXPRESSION TAG	UNP P27707
A	-6	LEU	-	EXPRESSION TAG	UNP P27707
A	-5	VAL	-	EXPRESSION TAG	UNP P27707
A	-4	PRO	-	EXPRESSION TAG	UNP P27707
A	-3	ARG	-	EXPRESSION TAG	UNP P27707
A	-2	GLY	-	EXPRESSION TAG	UNP P27707
A	-1	SER	-	EXPRESSION TAG	UNP P27707
A	0	HIS	-	EXPRESSION TAG	UNP P27707
A	9	SER	CYS	ENGINEERED MUTATION	UNP P27707
A	45	SER	CYS	ENGINEERED MUTATION	UNP P27707
A	59	SER	CYS	ENGINEERED MUTATION	UNP P27707
A	74	GLU	SER	ENGINEERED MUTATION	UNP P27707
A	146	SER	CYS	ENGINEERED MUTATION	UNP P27707

Continued on next page...

Continued from previous page...

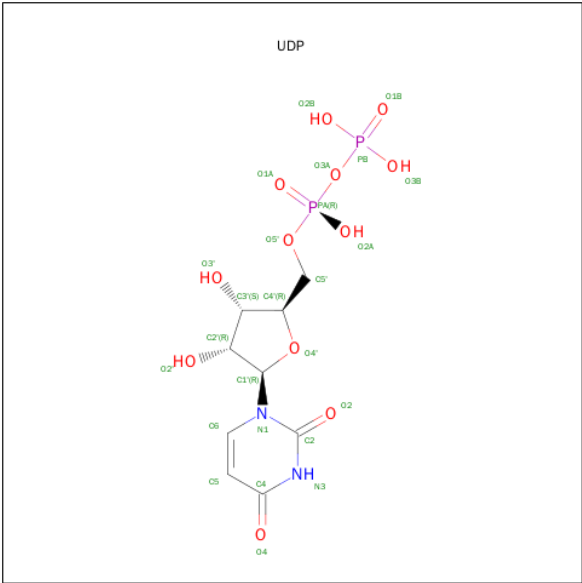
Chain	Residue	Modelled	Actual	Comment	Reference
B	-19	MET	-	EXPRESSION TAG	UNP P27707
B	-18	GLY	-	EXPRESSION TAG	UNP P27707
B	-17	SER	-	EXPRESSION TAG	UNP P27707
B	-16	SER	-	EXPRESSION TAG	UNP P27707
B	-15	HIS	-	EXPRESSION TAG	UNP P27707
B	-14	HIS	-	EXPRESSION TAG	UNP P27707
B	-13	HIS	-	EXPRESSION TAG	UNP P27707
B	-12	HIS	-	EXPRESSION TAG	UNP P27707
B	-11	HIS	-	EXPRESSION TAG	UNP P27707
B	-10	HIS	-	EXPRESSION TAG	UNP P27707
B	-9	SER	-	EXPRESSION TAG	UNP P27707
B	-8	SER	-	EXPRESSION TAG	UNP P27707
B	-7	GLY	-	EXPRESSION TAG	UNP P27707
B	-6	LEU	-	EXPRESSION TAG	UNP P27707
B	-5	VAL	-	EXPRESSION TAG	UNP P27707
B	-4	PRO	-	EXPRESSION TAG	UNP P27707
B	-3	ARG	-	EXPRESSION TAG	UNP P27707
B	-2	GLY	-	EXPRESSION TAG	UNP P27707
B	-1	SER	-	EXPRESSION TAG	UNP P27707
B	0	HIS	-	EXPRESSION TAG	UNP P27707
B	9	SER	CYS	ENGINEERED MUTATION	UNP P27707
B	45	SER	CYS	ENGINEERED MUTATION	UNP P27707
B	59	SER	CYS	ENGINEERED MUTATION	UNP P27707
B	74	GLU	SER	ENGINEERED MUTATION	UNP P27707
B	146	SER	CYS	ENGINEERED MUTATION	UNP P27707

- Molecule 2 is 5-(4-(((4,6-DIAMINOPYRIMIDIN-2-YL)THIO)METHYL)-5-PROPYLTHIAZOL-2-YL)-2-METHOXYPHENOL (three-letter code: 2XL) (formula: C₁₈H₂₁N₅O₂S₂).



Mol	Chain	Residues	Atoms					ZeroOcc	AltConf
2	A	1	Total	C	N	O	S	0	0
			27	18	5	2	2		
2	B	1	Total	C	N	O	S	0	0
			27	18	5	2	2		

- Molecule 3 is URIDINE-5'-DIPHOSPHATE (three-letter code: UDP) (formula: C₉H₁₄N₂O₁₂P₂).



Mol	Chain	Residues	Atoms					ZeroOcc	AltConf
3	A	1	Total	C	N	O	P	0	0
			25	9	2	12	2		
3	B	1	Total	C	N	O	P	0	0
			25	9	2	12	2		

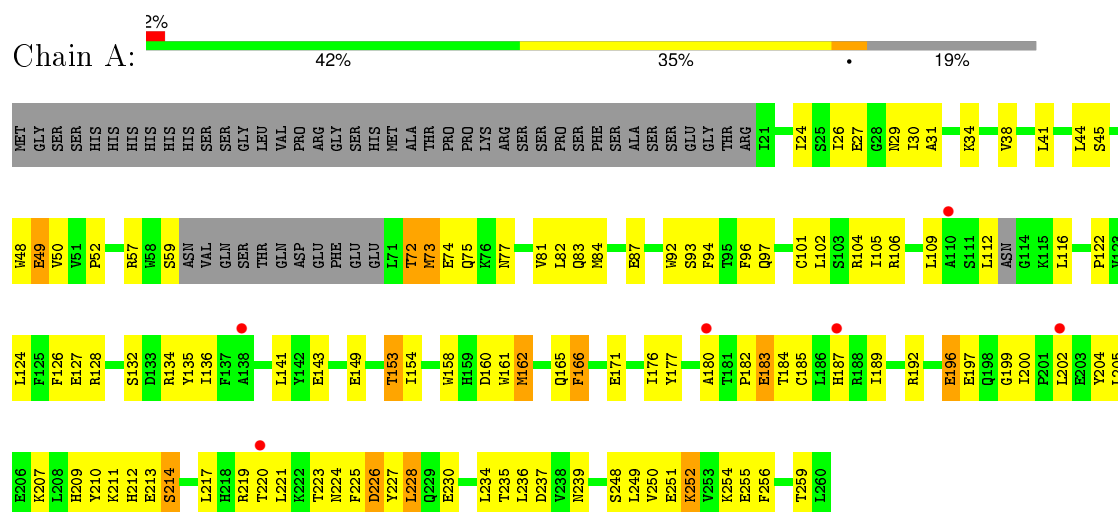
- Molecule 4 is water.

Mol	Chain	Residues	Atoms		ZeroOcc	AltConf
4	A	49	Total 49	O 49	0	0
4	B	54	Total 54	O 54	0	0

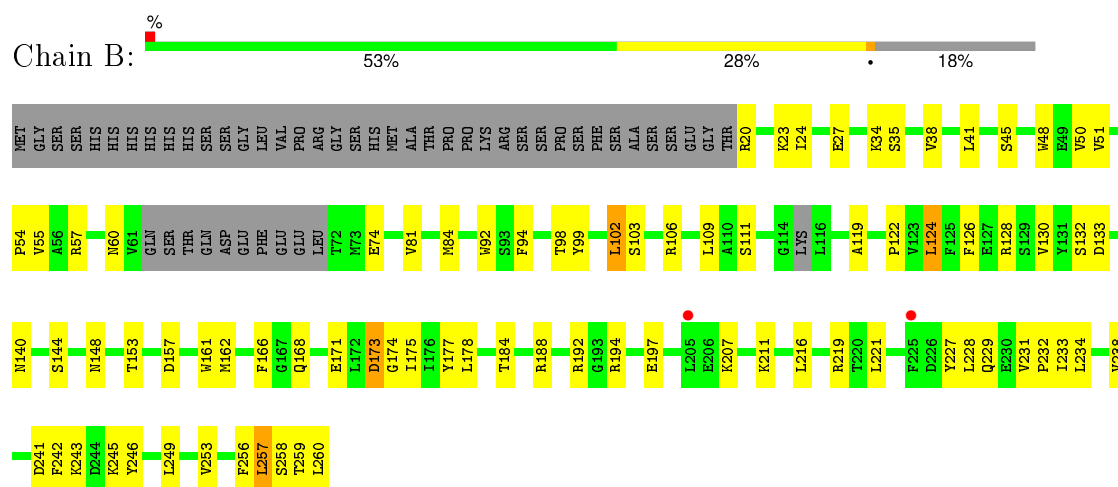
3 Residue-property plots

These plots are drawn for all protein, RNA and DNA chains in the entry. The first graphic for a chain summarises the proportions of errors displayed in the second graphic. The second graphic shows the sequence view annotated by issues in geometry and electron density. Residues are color-coded according to the number of geometric quality criteria for which they contain at least one outlier: green = 0, yellow = 1, orange = 2 and red = 3 or more. A red dot above a residue indicates a poor fit to the electron density ($RSRZ > 2$). Stretches of 2 or more consecutive residues without any outlier are shown as a green connector. Residues present in the sample, but not in the model, are shown in grey.

• Molecule 1: Deoxycytidine kinase



• Molecule 1: Deoxycytidine kinase



4 Data and refinement statistics

Property	Value	Source
Space group	P 41	Depositor
Cell constants a, b, c, α , β , γ	68.53Å 68.53Å 119.79Å 90.00° 90.00° 90.00°	Depositor
Resolution (Å)	27.44 – 2.09 27.44 – 2.09	Depositor EDS
% Data completeness (in resolution range)	95.8 (27.44-2.09) 95.7 (27.44-2.09)	Depositor EDS
R_{merge}	(Not available)	Depositor
R_{sym}	0.07	Depositor
$\langle I/\sigma(I) \rangle$ ¹	1.05 (at 2.08Å)	Xtriage
Refinement program	REFMAC 5.8.0049	Depositor
R, R_{free}	0.229 , 0.261 0.230 , 0.252	Depositor DCC
R_{free} test set	1590 reflections (5.33%)	DCC
Wilson B-factor (Å ²)	45.9	Xtriage
Anisotropy	0.049	Xtriage
Bulk solvent k_{sol} (e/Å ³), B_{sol} (Å ²)	0.34 , 14.8	EDS
Estimated twinning fraction	0.539 for H, K, L 0.461 for -H, K, -L 0.437 for h,-k,-l	Xtriage
Reported twinning fraction	0.539 for H, K, L 0.461 for -H, K, -L	Depositor
L-test for twinning ²	$\langle L \rangle = 0.48$, $\langle L^2 \rangle = 0.31$	Xtriage
Outliers	0 of 32500 reflections	Xtriage
F_o, F_c correlation	0.95	EDS
Total number of atoms	3973	wwPDB-VP
Average B, all atoms (Å ²)	30.0	wwPDB-VP

Xtriage's analysis on translational NCS is as follows: *The largest off-origin peak in the Patterson function is 4.77% of the height of the origin peak. No significant pseudotranslation is detected.*

¹Intensities estimated from amplitudes.

²Theoretical values of $\langle |L| \rangle$, $\langle L^2 \rangle$ for acentric reflections are 0.5, 0.375 respectively for untwinned datasets, and 0.333, 0.2 for perfectly twinned datasets.

5 Model quality [i](#)

5.1 Standard geometry [i](#)

Bond lengths and bond angles in the following residue types are not validated in this section: UDP, 2XL

The Z score for a bond length (or angle) is the number of standard deviations the observed value is removed from the expected value. A bond length (or angle) with $|Z| > 5$ is considered an outlier worth inspection. RMSZ is the root-mean-square of all Z scores of the bond lengths (or angles).

Mol	Chain	Bond lengths		Bond angles	
		RMSZ	$\# Z > 5$	RMSZ	$\# Z > 5$
1	A	0.61	0/1928	0.83	3/2614 (0.1%)
1	B	0.63	0/1936	0.86	3/2620 (0.1%)
All	All	0.62	0/3864	0.84	6/5234 (0.1%)

There are no bond length outliers.

All (6) bond angle outliers are listed below:

Mol	Chain	Res	Type	Atoms	Z	Observed(°)	Ideal(°)
1	A	230	GLU	CB-CA-C	-6.40	97.61	110.40
1	B	124	LEU	CA-CB-CG	6.08	129.28	115.30
1	A	141	LEU	CA-CB-CG	-5.58	102.47	115.30
1	B	257	LEU	CA-CB-CG	5.33	127.57	115.30
1	B	228	LEU	CA-CB-CG	5.22	127.31	115.30
1	A	109	LEU	CA-CB-CG	5.19	127.24	115.30

There are no chirality outliers.

There are no planarity outliers.

5.2 Too-close contacts [i](#)

In the following table, the Non-H and H(model) columns list the number of non-hydrogen atoms and hydrogen atoms in the chain respectively. The H(added) column lists the number of hydrogen atoms added and optimized by MolProbity. The Clashes column lists the number of clashes within the asymmetric unit, whereas Symm-Clashes lists symmetry related clashes.

Mol	Chain	Non-H	H(model)	H(added)	Clashes	Symm-Clashes
1	A	1877	0	1777	93	0
1	B	1889	0	1813	59	0
2	A	27	0	20	1	0

Continued on next page...

Continued from previous page...

Mol	Chain	Non-H	H(model)	H(added)	Clashes	Symm-Clashes
2	B	27	0	20	0	0
3	A	25	0	11	2	0
3	B	25	0	11	3	0
4	A	49	0	0	11	0
4	B	54	0	0	6	0
All	All	3973	0	3652	142	0

The all-atom clashscore is defined as the number of clashes found per 1000 atoms (including hydrogen atoms). The all-atom clashscore for this structure is 19.

All (142) close contacts within the same asymmetric unit are listed below, sorted by their clash magnitude.

Atom-1	Atom-2	Interatomic distance (Å)	Clash overlap (Å)
1:A:52:PRO:HA	1:A:127:GLU:OE1	1.47	1.11
1:B:38:VAL:HG22	1:B:50:VAL:HG22	1.45	0.95
1:A:52:PRO:CA	1:A:127:GLU:OE1	2.16	0.93
1:B:184:THR:O	1:B:188:ARG:HG3	1.68	0.93
1:B:192:ARG:NH2	3:B:302:UDP:O2B	2.05	0.88
1:A:106:ARG:HH22	1:B:157:ASP:CG	1.78	0.87
1:A:106:ARG:NH2	1:B:157:ASP:OD1	2.08	0.86
1:A:102:LEU:HD23	1:A:162:MET:HE2	1.62	0.81
1:A:34:LYS:NZ	3:A:302:UDP:O3B	2.13	0.81
1:B:38:VAL:HG22	1:B:50:VAL:CG2	2.10	0.80
1:A:209:HIS:O	4:A:436:HOH:O	1.99	0.79
1:A:27:GLU:OE2	1:A:132:SER:OG	2.01	0.79
1:A:212:HIS:N	4:A:436:HOH:O	2.16	0.77
1:A:81:VAL:HA	1:A:84[A]:MET:SD	2.29	0.72
1:A:225:PHE:O	1:A:228:LEU:HB2	1.89	0.72
1:A:106:ARG:NH2	1:B:157:ASP:CG	2.43	0.72
1:B:35:SER:HA	1:B:38:VAL:HG12	1.71	0.71
1:A:158:TRP:HD1	1:B:102:LEU:HD13	1.54	0.71
1:A:177:TYR:CD2	1:A:235:THR:HG23	2.27	0.69
1:B:38:VAL:CG2	1:B:50:VAL:HG22	2.21	0.69
1:A:102:LEU:HD21	1:B:161:TRP:CE3	2.27	0.69
1:A:183:GLU:O	4:A:440:HOH:O	2.11	0.68
1:A:149:GLU:O	1:A:153:THR:HG23	1.94	0.68
1:A:101:CYS:O	1:A:105:ILE:HG13	1.96	0.66
1:B:54:PRO:O	1:B:57:ARG:HB2	1.96	0.65
1:A:27:GLU:HB3	4:A:402:HOH:O	1.96	0.65
1:B:243:LYS:HE3	3:B:302:UDP:C2	2.31	0.64
1:A:177:TYR:HB3	1:A:235:THR:HG23	1.78	0.64

Continued on next page...

Continued from previous page...

Atom-1	Atom-2	Interatomic distance (Å)	Clash overlap (Å)
1:A:49:GLU:HB3	1:A:124:LEU:CD1	2.28	0.63
1:A:197:GLU:HA	1:A:200:ILE:CD1	2.28	0.62
1:B:256:PHE:O	1:B:259:THR:OG1	2.17	0.62
1:B:111:SER:OG	1:B:124:LEU:HD21	1.99	0.62
1:B:20:ARG:HH11	1:B:122:PRO:HG3	1.65	0.62
1:A:102:LEU:HD23	1:A:162:MET:CE	2.30	0.62
1:A:237:ASP:OD1	1:A:239:ASN:ND2	2.31	0.62
1:A:29:ASN:ND2	1:A:209:HIS:HB2	2.18	0.59
1:B:253:VAL:O	1:B:257:LEU:HG	2.04	0.58
1:A:180:ALA:HB1	1:A:184:THR:HB	1.86	0.58
1:A:210:TYR:O	1:A:214:SER:OG	2.23	0.57
1:A:162:MET:CE	1:B:161:TRP:HZ3	2.18	0.57
1:B:94:PHE:O	1:B:98:THR:HG23	2.04	0.57
1:A:234:LEU:HD13	1:A:256:PHE:HB2	1.87	0.56
1:A:154:ILE:HG23	1:B:99:TYR:CD1	2.40	0.56
1:A:30:ILE:O	1:A:185:CYS:HB3	2.05	0.56
1:B:192:ARG:HD2	4:B:442:HOH:O	2.05	0.56
1:A:226:ASP:N	1:A:226:ASP:OD1	2.38	0.56
1:A:24:ILE:HG21	1:A:176:ILE:HD12	1.88	0.56
1:A:162:MET:HE3	1:B:161:TRP:CZ3	2.41	0.56
1:B:242:PHE:O	1:B:246:TYR:HB3	2.05	0.56
1:A:52:PRO:CB	1:A:127:GLU:OE1	2.55	0.55
1:A:162:MET:HE3	1:B:161:TRP:HZ3	1.70	0.55
1:A:210:TYR:C	4:A:436:HOH:O	2.44	0.55
1:A:197:GLU:HA	1:A:200:ILE:HD13	1.90	0.54
1:A:50:VAL:HG12	1:A:52:PRO:HD3	1.88	0.54
1:A:49:GLU:HB3	1:A:124:LEU:HD12	1.90	0.53
1:A:158:TRP:NE1	1:A:162:MET:SD	2.80	0.53
1:B:45:SER:HB3	1:B:48:TRP:CG	2.44	0.53
1:A:213:GLU:N	4:A:436:HOH:O	2.39	0.52
1:B:23:LYS:N	1:B:173:ASP:OD1	2.38	0.52
1:A:72:THR:H	1:A:75:GLN:HB2	1.73	0.52
1:A:26:ILE:HG22	1:A:34:LYS:HG2	1.92	0.52
1:A:162:MET:CE	1:B:161:TRP:CZ3	2.93	0.51
1:A:255:GLU:O	1:A:259:THR:HG23	2.10	0.51
1:A:48:TRP:O	4:A:409:HOH:O	2.18	0.51
1:A:136:ILE:HG21	1:A:212:HIS:CE1	2.45	0.51
1:A:104:ARG:HH21	1:A:104:ARG:HG3	1.76	0.51
1:A:136:ILE:HG21	1:A:212:HIS:HE1	1.75	0.50
1:A:45:SER:O	4:A:409:HOH:O	2.19	0.50
1:A:192:ARG:HD3	3:A:302:UDP:H5'1	1.92	0.50

Continued on next page...

Continued from previous page...

Atom-1	Atom-2	Interatomic distance (Å)	Clash overlap (Å)
1:A:236:LEU:HD13	1:A:249:LEU:HD22	1.94	0.50
1:B:245:LYS:HB3	4:B:445:HOH:O	2.12	0.50
1:A:250:VAL:HG12	1:A:254:LYS:HD2	1.94	0.49
1:B:238:VAL:HA	4:B:449:HOH:O	2.13	0.49
1:B:256:PHE:O	1:B:260:LEU:HG	2.13	0.49
1:B:119:ALA:O	1:B:122:PRO:HD3	2.13	0.49
1:B:249:LEU:HG	4:B:446:HOH:O	2.12	0.49
1:A:83:GLN:O	1:A:87:GLU:HG2	2.12	0.49
1:B:177:TYR:OH	4:B:440:HOH:O	2.13	0.48
1:A:177:TYR:CD2	1:A:235:THR:CG2	2.96	0.48
1:A:196:GLU:H	1:A:196:GLU:CD	2.17	0.48
1:A:187:HIS:N	4:A:440:HOH:O	2.01	0.48
1:A:217:LEU:C	1:A:219:ARG:H	2.17	0.48
1:A:84[A]:MET:HB3	1:A:92:TRP:CD1	2.48	0.48
1:A:93:SER:O	1:A:97:GLN:HG2	2.14	0.48
1:B:175:ILE:HB	1:B:233:ILE:HG12	1.96	0.47
1:A:204:TYR:OH	2:A:301:2XL:NAO	2.35	0.47
1:B:231:VAL:HA	1:B:232:PRO:HD3	1.70	0.47
1:B:130:VAL:O	1:B:133:ASP:HB2	2.15	0.47
1:B:51:VAL:HB	1:B:126:PHE:HD1	1.80	0.46
1:B:148:ASN:OD1	1:B:148:ASN:C	2.53	0.46
1:A:161:TRP:CZ3	1:A:165:GLN:HG3	2.50	0.46
1:B:34:LYS:NZ	1:B:128:ARG:NH2	2.63	0.46
1:A:77:ASN:O	1:A:81:VAL:HG12	2.17	0.45
1:A:82:LEU:HA	1:A:96:PHE:HE2	1.81	0.45
1:A:116:LEU:HD13	1:A:122:PRO:HB2	1.97	0.45
1:B:38:VAL:HA	1:B:41:LEU:HD12	1.97	0.45
1:A:82:LEU:HA	1:A:96:PHE:CE2	2.51	0.45
1:B:99:TYR:O	1:B:103:SER:HB2	2.16	0.45
1:A:38:VAL:HG13	1:A:50:VAL:HG21	1.98	0.45
1:A:177:TYR:CG	1:A:235:THR:HG23	2.51	0.45
1:A:134:ARG:HH12	1:A:160:ASP:CG	2.20	0.45
1:A:143:GLU:OE1	1:A:211:LYS:HE2	2.17	0.45
1:A:171:GLU:HG3	1:A:227:TYR:CE2	2.52	0.44
1:A:73:MET:O	1:A:77:ASN:HB2	2.18	0.44
1:A:248:SER:HA	1:A:251:GLU:HB2	2.00	0.43
1:A:202:LEU:HA	1:A:205:LEU:HD12	2.00	0.43
1:B:94:PHE:CZ	1:B:98:THR:HG21	2.53	0.43
1:B:109:LEU:HD11	1:B:166:PHE:CZ	2.53	0.43
1:A:161:TRP:CE3	1:A:165:GLN:HG3	2.53	0.43
1:B:34:LYS:HE3	1:B:128:ARG:CZ	2.48	0.43

Continued on next page...

Continued from previous page...

Atom-1	Atom-2	Interatomic distance (Å)	Clash overlap (Å)
1:A:124:LEU:HD23	1:A:126:PHE:HE1	1.83	0.43
1:A:182:PRO:HD3	1:A:209:HIS:CD2	2.54	0.43
1:B:227:TYR:CD2	1:B:231:VAL:HG21	2.53	0.43
1:A:44:LEU:HD12	1:A:48:TRP:HZ3	1.84	0.43
3:B:302:UDP:O2B	4:B:425:HOH:O	2.22	0.42
1:A:143:GLU:OE1	1:A:211:LYS:CE	2.67	0.42
1:A:57:ARG:NH2	1:A:74:GLU:OE2	2.38	0.42
1:B:177:TYR:N	1:B:234:LEU:O	2.28	0.42
1:B:219:ARG:NH2	1:B:229:GLN:O	2.53	0.42
1:B:140:ASN:HD21	1:B:207:LYS:HB3	1.85	0.42
1:A:34:LYS:O	1:A:38:VAL:HB	2.20	0.42
1:A:214:SER:O	1:A:220:THR:N	2.49	0.42
1:B:109:LEU:HD11	1:B:166:PHE:CE1	2.54	0.42
1:A:94:PHE:HB3	4:A:404:HOH:O	2.18	0.42
1:A:97:GLN:O	4:A:401:HOH:O	2.21	0.41
1:B:168:GLN:HA	1:B:171:GLU:HG3	2.00	0.41
1:B:175:ILE:O	1:B:233:ILE:HA	2.20	0.41
1:B:24:ILE:HA	1:B:174:GLY:O	2.21	0.41
1:A:166:PHE:CZ	1:B:162:MET:HG3	2.55	0.41
1:B:194:ARG:HB2	1:B:197:GLU:HB2	2.01	0.41
1:A:127:GLU:O	1:A:128:ARG:HB2	2.20	0.41
1:A:217:LEU:C	1:A:219:ARG:N	2.74	0.41
1:A:84[B]:MET:HB3	1:A:92:TRP:CD1	2.55	0.41
1:B:238:VAL:HB	1:B:242:PHE:HE2	1.86	0.41
1:A:31:ALA:CB	1:A:189:ILE:HG13	2.51	0.41
1:A:197:GLU:C	1:A:199:GLY:N	2.73	0.41
1:A:135:TYR:CZ	1:A:223:THR:HB	2.56	0.40
1:B:20:ARG:NH1	1:B:122:PRO:HG3	2.32	0.40
1:A:252:LYS:HG3	1:A:252:LYS:HZ2	1.82	0.40
1:B:27:GLU:HA	1:B:27:GLU:OE2	2.21	0.40
1:B:175:ILE:HG21	1:B:216:LEU:CD2	2.51	0.40
1:B:84[B]:MET:HB3	1:B:92:TRP:CD1	2.56	0.40

There are no symmetry-related clashes.

5.3 Torsion angles ⓘ

5.3.1 Protein backbone ⓘ

In the following table, the Percentiles column shows the percent Ramachandran outliers of the chain as a percentile score with respect to all X-ray entries followed by that with respect to entries

of similar resolution.

The Analysed column shows the number of residues for which the backbone conformation was analysed, and the total number of residues.

Mol	Chain	Analysed	Favoured	Allowed	Outliers	Percentiles	
1	A	224/280 (80%)	212 (95%)	12 (5%)	0	100	100
1	B	225/280 (80%)	209 (93%)	16 (7%)	0	100	100
All	All	449/560 (80%)	421 (94%)	28 (6%)	0	100	100

There are no Ramachandran outliers to report.

5.3.2 Protein sidechains ⓘ

In the following table, the Percentiles column shows the percent sidechain outliers of the chain as a percentile score with respect to all X-ray entries followed by that with respect to entries of similar resolution.

The Analysed column shows the number of residues for which the sidechain conformation was analysed, and the total number of residues.

Mol	Chain	Analysed	Rotameric	Outliers	Percentiles	
1	A	202/256 (79%)	184 (91%)	18 (9%)	12	8
1	B	202/256 (79%)	187 (93%)	15 (7%)	17	13
All	All	404/512 (79%)	371 (92%)	33 (8%)	14	10

All (33) residues with a non-rotameric sidechain are listed below:

Mol	Chain	Res	Type
1	A	41	LEU
1	A	49	GLU
1	A	59	SER
1	A	72	THR
1	A	73	MET
1	A	112	LEU
1	A	153	THR
1	A	162	MET
1	A	166	PHE
1	A	183	GLU
1	A	196	GLU
1	A	207	LYS
1	A	214	SER
1	A	221	LEU

Continued on next page...

Continued from previous page...

Mol	Chain	Res	Type
1	A	224	ASN
1	A	226	ASP
1	A	228	LEU
1	A	252	LYS
1	B	55	VAL
1	B	60	ASN
1	B	74	GLU
1	B	81	VAL
1	B	102	LEU
1	B	106	ARG
1	B	132	SER
1	B	144	SER
1	B	153	THR
1	B	173	ASP
1	B	178	LEU
1	B	211	LYS
1	B	221	LEU
1	B	241	ASP
1	B	258	SER

Some sidechains can be flipped to improve hydrogen bonding and reduce clashes. All (5) such sidechains are listed below:

Mol	Chain	Res	Type
1	A	77	ASN
1	A	156	GLN
1	A	209	HIS
1	A	224	ASN
1	B	140	ASN

5.3.3 RNA ⓘ

There are no RNA molecules in this entry.

5.4 Non-standard residues in protein, DNA, RNA chains ⓘ

There are no non-standard protein/DNA/RNA residues in this entry.

5.5 Carbohydrates ⓘ

There are no carbohydrates in this entry.

5.6 Ligand geometry

4 ligands are modelled in this entry.

In the following table, the Counts columns list the number of bonds (or angles) for which Mogul statistics could be retrieved, the number of bonds (or angles) that are observed in the model and the number of bonds (or angles) that are defined in the chemical component dictionary. The Link column lists molecule types, if any, to which the group is linked. The Z score for a bond length (or angle) is the number of standard deviations the observed value is removed from the expected value. A bond length (or angle) with $|Z| > 2$ is considered an outlier worth inspection. RMSZ is the root-mean-square of all Z scores of the bond lengths (or angles).

Mol	Type	Chain	Res	Link	Bond lengths			Bond angles		
					Counts	RMSZ	# $ Z > 2$	Counts	RMSZ	# $ Z > 2$
2	2XL	A	301	-	26,29,29	3.76	3 (11%)	29,40,40	1.81	5 (17%)
3	UDP	A	302	-	18,26,26	1.12	2 (11%)	26,40,40	1.69	3 (11%)
2	2XL	B	301	-	26,29,29	2.03	4 (15%)	29,40,40	2.09	12 (41%)
3	UDP	B	302	-	18,26,26	0.75	0	26,40,40	1.78	2 (7%)

In the following table, the Chirals column lists the number of chiral outliers, the number of chiral centers analysed, the number of these observed in the model and the number defined in the chemical component dictionary. Similar counts are reported in the Torsion and Rings columns. '-' means no outliers of that kind were identified.

Mol	Type	Chain	Res	Link	Chirals	Torsions	Rings
2	2XL	A	301	-	-	0/11/14/14	0/3/3/3
3	UDP	A	302	-	-	0/12/32/32	0/2/2/2
2	2XL	B	301	-	-	0/11/14/14	0/3/3/3
3	UDP	B	302	-	-	0/12/32/32	0/2/2/2

All (9) bond length outliers are listed below:

Mol	Chain	Res	Type	Atoms	Z	Observed(Å)	Ideal(Å)
2	A	301	2XL	CBA-SAR	-14.04	1.54	1.73
2	A	301	2XL	CAZ-SAR	-11.65	1.52	1.74
2	B	301	2XL	C2-SAQ	-7.01	1.62	1.75
2	A	301	2XL	CAZ-CAY	-4.78	1.33	1.42
2	B	301	2XL	CAZ-CAY	-4.65	1.33	1.42
2	B	301	2XL	CAZ-SAR	-3.61	1.67	1.74
2	B	301	2XL	CBA-SAR	-3.16	1.69	1.73
3	A	302	UDP	PB-O3B	-2.25	1.46	1.54
3	A	302	UDP	O4'-C1'	3.40	1.45	1.41

All (22) bond angle outliers are listed below:

Mol	Chain	Res	Type	Atoms	Z	Observed(°)	Ideal(°)
2	B	301	2XL	CAB-OAP-CAX	-4.19	111.19	117.54
2	A	301	2XL	N1-C2-N3	-2.67	121.67	126.75
2	B	301	2XL	CAK-CAZ-CAY	-2.65	125.19	127.56
2	B	301	2XL	OAP-CAX-CAG	-2.58	120.00	124.35
2	B	301	2XL	CAV-CAI-CAU	-2.48	118.88	120.98
2	B	301	2XL	N1-C2-N3	-2.34	122.30	126.75
3	B	302	UDP	O3A-PA-O5'	-2.27	96.92	102.94
2	B	301	2XL	CAF-CAV-CAI	2.05	120.89	118.17
2	B	301	2XL	NAD-C4-N3	2.09	120.32	116.50
2	A	301	2XL	NAD-C4-N3	2.26	120.61	116.50
2	A	301	2XL	C2-N1-C6	2.30	118.21	115.97
3	A	302	UDP	O5'-C5'-C4'	2.64	118.85	109.12
2	A	301	2XL	CAK-CAZ-SAR	2.72	124.05	120.24
2	B	301	2XL	C2-N3-C4	2.82	118.72	115.97
2	B	301	2XL	CAL-SAQ-C2	2.84	105.60	102.57
3	A	302	UDP	O3B-PB-O1B	3.18	120.80	110.58
2	B	301	2XL	CAK-CAZ-SAR	3.42	125.03	120.24
2	B	301	2XL	OAP-CAX-CAU	3.97	119.80	114.57
2	B	301	2XL	C2-N1-C6	4.60	120.45	115.97
3	A	302	UDP	C4-N3-C2	6.23	120.31	114.14
2	A	301	2XL	C2-N3-C4	6.81	122.61	115.97
3	B	302	UDP	C4-N3-C2	7.05	121.13	114.14

There are no chirality outliers.

There are no torsion outliers.

There are no ring outliers.

3 monomers are involved in 6 short contacts:

Mol	Chain	Res	Type	Clashes	Symm-Clashes
2	A	301	2XL	1	0
3	A	302	UDP	2	0
3	B	302	UDP	3	0

5.7 Other polymers [i](#)

There are no such residues in this entry.

5.8 Polymer linkage issues [i](#)

There are no chain breaks in this entry.

6 Fit of model and data [i](#)

6.1 Protein, DNA and RNA chains [i](#)

In the following table, the column labelled ‘#RSRZ> 2’ contains the number (and percentage) of RSRZ outliers, followed by percent RSRZ outliers for the chain as percentile scores relative to all X-ray entries and entries of similar resolution. The OWAB column contains the minimum, median, 95th percentile and maximum values of the occupancy-weighted average B-factor per residue. The column labelled ‘Q< 0.9’ lists the number of (and percentage) of residues with an average occupancy less than 0.9.

Mol	Chain	Analysed	<RSRZ>	#RSRZ>2	OWAB(Å ²)	Q<0.9
1	A	228/280 (81%)	0.46	6 (2%) 59 66	29, 30, 31, 31	0
1	B	230/280 (82%)	0.43	2 (0%) 85 88	29, 30, 31, 31	0
All	All	458/560 (81%)	0.45	8 (1%) 73 78	29, 30, 31, 31	0

All (8) RSRZ outliers are listed below:

Mol	Chain	Res	Type	RSRZ
1	A	180	ALA	3.8
1	A	202	LEU	2.8
1	B	225	PHE	2.7
1	B	205	LEU	2.4
1	A	187	HIS	2.1
1	A	138	ALA	2.1
1	A	110	ALA	2.1
1	A	220	THR	2.0

6.2 Non-standard residues in protein, DNA, RNA chains [i](#)

There are no non-standard protein/DNA/RNA residues in this entry.

6.3 Carbohydrates [i](#)

There are no carbohydrates in this entry.

6.4 Ligands [i](#)

In the following table, the Atoms column lists the number of modelled atoms in the group and the number defined in the chemical component dictionary. LLDF column lists the quality of electron density of the group with respect to its neighbouring residues in protein, DNA or RNA chains.

The B-factors column lists the minimum, median, 95th percentile and maximum values of B factors of atoms in the group. The column labelled 'Q< 0.9' lists the number of atoms with occupancy less than 0.9.

Mol	Type	Chain	Res	Atoms	RSCC	RSR	LLDF	B-factors(\AA^2)	Q<0.9
3	UDP	A	302	25/25	0.95	0.15	-0.19	29,30,30,30	0
2	2XL	A	301	27/27	0.93	0.14	-0.21	29,30,30,30	0
2	2XL	B	301	27/27	0.95	0.14	-0.47	29,29,30,30	0
3	UDP	B	302	25/25	0.95	0.13	-0.83	29,30,30,30	0

6.5 Other polymers [i](#)

There are no such residues in this entry.