



# Full wwPDB X-ray Structure Validation Report ⓘ

Feb 1, 2016 – 05:15 AM GMT

PDB ID : 2Q2R  
Title : Trypanosoma cruzi glucokinase in complex with beta-D-glucose and ADP  
Authors : Cordeiro, A.T.; Caceres, A.J.; Vertommen, D.; Concepcion, J.L.; Michels, P.A.; Versees, W.  
Deposited on : 2007-05-29  
Resolution : 2.10 Å(reported)

This is a Full wwPDB X-ray Structure Validation Report for a publicly released PDB entry.  
We welcome your comments at [validation@mail.wwpdb.org](mailto:validation@mail.wwpdb.org)  
A user guide is available at  
<http://wwpdb.org/validation/2016/XrayValidationReportHelp>  
with specific help available everywhere you see the ⓘ symbol.

---

The following versions of software and data (see [references ⓘ](#)) were used in the production of this report:

MolProbity : 4.02b-467  
Mogul : 1.7 (RC4), CSD as536be (2015)  
Xtriage (Phenix) : 1.9-1692  
EDS : rb-20026688  
Percentile statistics : 20151230.v01 (using entries in the PDB archive December 30th 2015)  
Refmac : 5.8.0135  
CCP4 : 6.5.0  
Ideal geometry (proteins) : Engh & Huber (2001)  
Ideal geometry (DNA, RNA) : Parkinson et al. (1996)  
Validation Pipeline (wwPDB-VP) : trunk26865

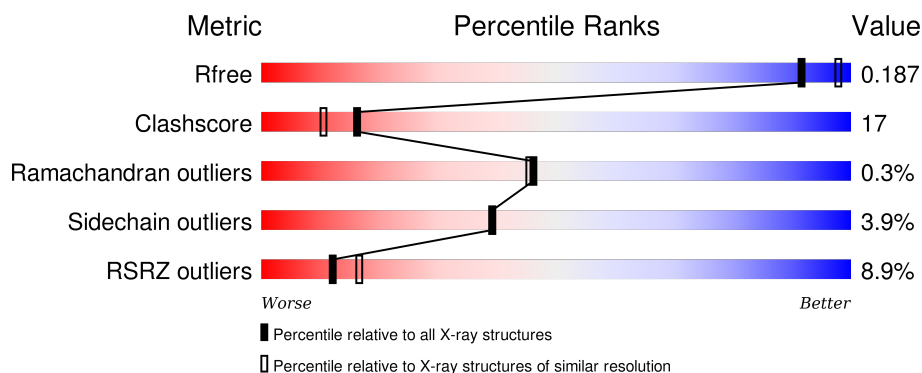
# 1 Overall quality at a glance

The following experimental techniques were used to determine the structure:

*X-RAY DIFFRACTION*

The reported resolution of this entry is 2.10 Å.

Percentile scores (ranging between 0-100) for global validation metrics of the entry are shown in the following graphic. The table shows the number of entries on which the scores are based.



Metric	Whole archive (#Entries)	Similar resolution (#Entries, resolution range(Å))
$R_{free}$	91344	3939 (2.10-2.10)
Clashscore	102246	4460 (2.10-2.10)
Ramachandran outliers	100387	4413 (2.10-2.10)
Sidechain outliers	100360	4414 (2.10-2.10)
RSRZ outliers	91569	3948 (2.10-2.10)

The table below summarises the geometric issues observed across the polymeric chains and their fit to the electron density. The red, orange, yellow and green segments on the lower bar indicate the fraction of residues that contain outliers for  $\geq 3$ , 2, 1 and 0 types of geometric quality criteria. A grey segment represents the fraction of residues that are not modelled. The numeric value for each fraction is indicated below the corresponding segment, with a dot representing fractions  $\leq 5\%$ . The upper red bar (where present) indicates the fraction of residues that have poor fit to the electron density. The numeric value is given above the bar.

Mol	Chain	Length	Quality of chain
1	A	373	<div> <div>9%</div> <div>76%</div> <div>21%</div> <div>..</div> </div>
1	B	373	<div> <div>9%</div> <div>77%</div> <div>20%</div> <div>..</div> </div>

The following table lists non-polymeric compounds, carbohydrate monomers and non-standard residues in protein, DNA, RNA chains that are outliers for geometric or electron-density-fit criteria:

Mol	Type	Chain	Res	Chirality	Geometry	Clashes	Electron density
3	ADP	B	2001	-	-	-	X

## 2 Entry composition [i](#)

There are 4 unique types of molecules in this entry. The entry contains 6308 atoms, of which 0 are hydrogens and 0 are deuteriums.

In the tables below, the ZeroOcc column contains the number of atoms modelled with zero occupancy, the AltConf column contains the number of residues with at least one atom in alternate conformation and the Trace column contains the number of residues modelled with at most 2 atoms.

- Molecule 1 is a protein called Glucokinase 1, putative.

Mol	Chain	Residues	Atoms					ZeroOcc	AltConf	Trace
1	A	370	Total	C	N	O	S	6	2	0
			2872	1822	502	526	22			
1	B	370	Total	C	N	O	S	6	2	0
			2872	1822	502	526	22			

There are 32 discrepancies between the modelled and reference sequences:

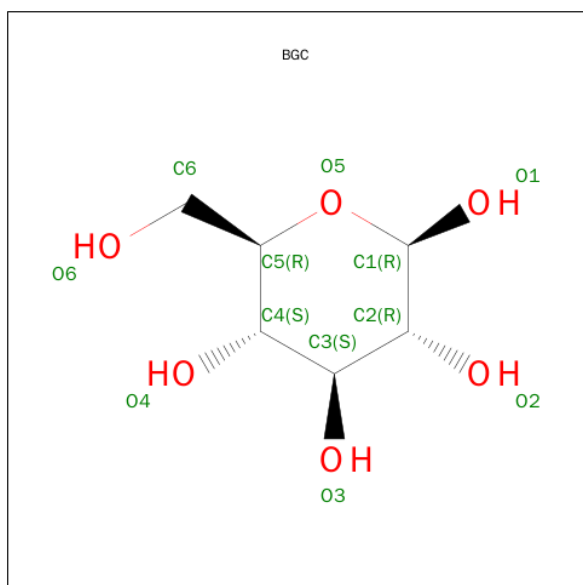
Chain	Residue	Modelled	Actual	Comment	Reference
A	-5	ALA	-	INSERTION	UNP Q4E4E1
A	-4	PRO	-	INSERTION	UNP Q4E4E1
A	-3	ALA	-	INSERTION	UNP Q4E4E1
A	-2	GLY	-	INSERTION	UNP Q4E4E1
A	-1	SER	-	INSERTION	UNP Q4E4E1
A	0	HIS	-	INSERTION	UNP Q4E4E1
A	22	ALA	VAL	CONFLICT	UNP Q4E4E1
A	65	ILE	LEU	CONFLICT	UNP Q4E4E1
A	81	MET	ILE	CONFLICT	UNP Q4E4E1
A	125	HIS	ARG	CONFLICT	UNP Q4E4E1
A	196	PRO	-	INSERTION	UNP Q4E4E1
A	?	-	GLN	DELETION	UNP Q4E4E1
A	213	LEU	ILE	CONFLICT	UNP Q4E4E1
A	232	PHE	LEU	CONFLICT	UNP Q4E4E1
A	327	HIS	ARG	CONFLICT	UNP Q4E4E1
A	344	SER	THR	CONFLICT	UNP Q4E4E1
B	-5	ALA	-	INSERTION	UNP Q4E4E1
B	-4	PRO	-	INSERTION	UNP Q4E4E1
B	-3	ALA	-	INSERTION	UNP Q4E4E1
B	-2	GLY	-	INSERTION	UNP Q4E4E1
B	-1	SER	-	INSERTION	UNP Q4E4E1
B	0	HIS	-	INSERTION	UNP Q4E4E1
B	22	ALA	VAL	CONFLICT	UNP Q4E4E1
B	65	ILE	LEU	CONFLICT	UNP Q4E4E1
B	81	MET	ILE	CONFLICT	UNP Q4E4E1

*Continued on next page...*

Continued from previous page...

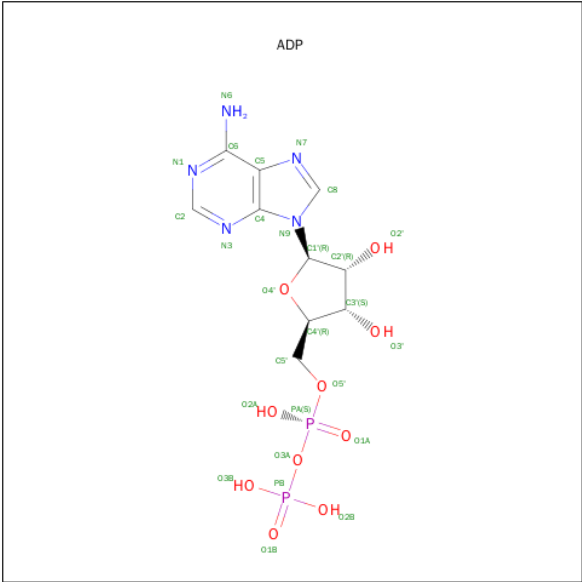
Chain	Residue	Modelled	Actual	Comment	Reference
B	125	HIS	ARG	CONFLICT	UNP Q4E4E1
B	196	PRO	-	INSERTION	UNP Q4E4E1
B	?	-	GLN	DELETION	UNP Q4E4E1
B	213	LEU	ILE	CONFLICT	UNP Q4E4E1
B	232	PHE	LEU	CONFLICT	UNP Q4E4E1
B	327	HIS	ARG	CONFLICT	UNP Q4E4E1
B	344	SER	THR	CONFLICT	UNP Q4E4E1

- Molecule 2 is SUGAR (BETA-D-GLUCOSE) (three-letter code: BGC) (formula:  $C_6H_{12}O_6$ ).



Mol	Chain	Residues	Atoms			ZeroOcc	AltConf
2	A	1	Total	C	O	0	0
			12	6	6		
2	B	1	Total	C	O	0	0
			12	6	6		

- Molecule 3 is ADENOSINE-5'-DIPHOSPHATE (three-letter code: ADP) (formula:  $C_{10}H_{15}N_5O_{10}P_2$ ).



Mol	Chain	Residues	Atoms					ZeroOcc	AltConf
3	A	1	Total	C	N	O	P	0	0
			27	10	5	10	2		
3	B	1	Total	C	N	O	P	0	0
			27	10	5	10	2		

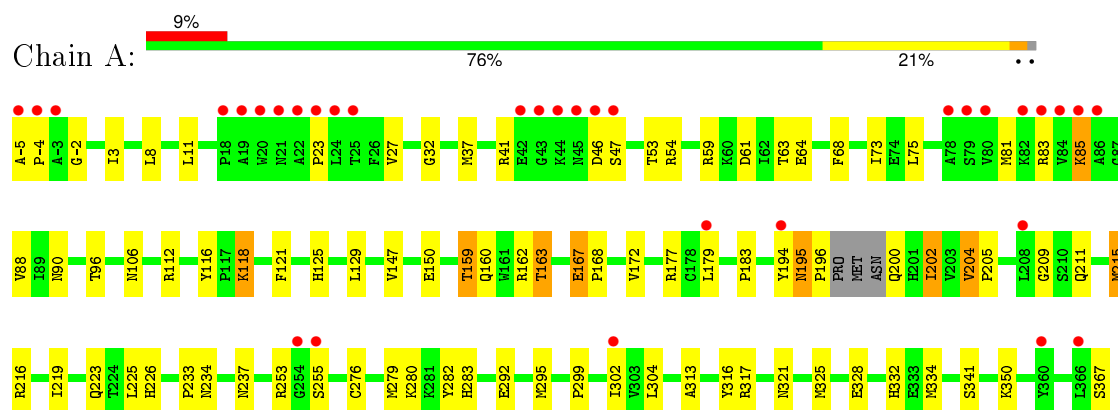
- Molecule 4 is water.

Mol	Chain	Residues	Atoms		ZeroOcc	AltConf
4	A	239	Total	O	0	0
			239	239		
4	B	247	Total	O	0	0
			247	247		

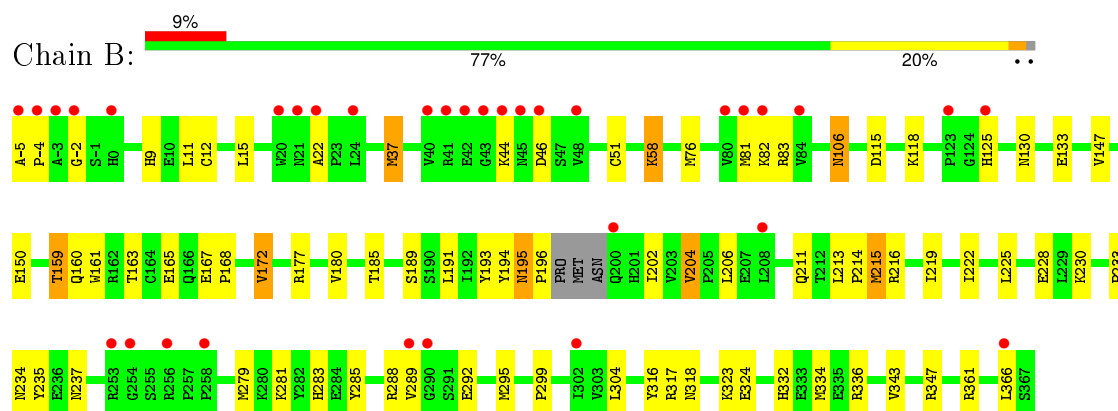
### 3 Residue-property plots

These plots are drawn for all protein, RNA and DNA chains in the entry. The first graphic for a chain summarises the proportions of errors displayed in the second graphic. The second graphic shows the sequence view annotated by issues in geometry and electron density. Residues are color-coded according to the number of geometric quality criteria for which they contain at least one outlier: green = 0, yellow = 1, orange = 2 and red = 3 or more. A red dot above a residue indicates a poor fit to the electron density ( $RSRZ > 2$ ). Stretches of 2 or more consecutive residues without any outlier are shown as a green connector. Residues present in the sample, but not in the model, are shown in grey.

- Molecule 1: Glucokinase 1, putative



- Molecule 1: Glucokinase 1, putative



## 4 Data and refinement statistics

Property	Value	Source
Space group	P 21 21 2	Depositor
Cell constants a, b, c, $\alpha$ , $\beta$ , $\gamma$	107.94Å 125.70Å 65.11Å 90.00° 90.00° 90.00°	Depositor
Resolution (Å)	29.50 – 2.10 49.59 – 2.40	Depositor EDS
% Data completeness (in resolution range)	100.0 (29.50-2.10) 99.6 (49.59-2.40)	Depositor EDS
$R_{merge}$	(Not available)	Depositor
$R_{sym}$	0.10	Depositor
$\langle I/\sigma(I) \rangle$ <sup>1</sup>	3.39 (at 2.39Å)	Xtriage
Refinement program	REFMAC 5.2.0019	Depositor
R, $R_{free}$	0.194 , 0.258 0.184 , 0.187	Depositor DCC
$R_{free}$ test set	1762 reflections (5.27%)	DCC
Wilson B-factor (Å <sup>2</sup> )	28.9	Xtriage
Anisotropy	1.004	Xtriage
Bulk solvent $k_{sol}$ (e/Å <sup>3</sup> ), $B_{sol}$ (Å <sup>2</sup> )	0.34 , 51.2	EDS
Estimated twinning fraction	No twinning to report.	Xtriage
L-test for twinning <sup>2</sup>	$\langle  L  \rangle = 0.48$ , $\langle L^2 \rangle = 0.31$	Xtriage
Outliers	0 of 35211 reflections	Xtriage
$F_o, F_c$ correlation	0.95	EDS
Total number of atoms	6308	wwPDB-VP
Average B, all atoms (Å <sup>2</sup> )	41.0	wwPDB-VP

Xtriage's analysis on translational NCS is as follows: *The largest off-origin peak in the Patterson function is 7.79% of the height of the origin peak. No significant pseudotranslation is detected.*

<sup>1</sup>Intensities estimated from amplitudes.

<sup>2</sup>Theoretical values of  $\langle |L| \rangle$ ,  $\langle L^2 \rangle$  for acentric reflections are 0.5, 0.375 respectively for untwinned datasets, and 0.333, 0.2 for perfectly twinned datasets.

## 5 Model quality [i](#)

### 5.1 Standard geometry [i](#)

Bond lengths and bond angles in the following residue types are not validated in this section: BGC, ADP

The Z score for a bond length (or angle) is the number of standard deviations the observed value is removed from the expected value. A bond length (or angle) with  $|Z| > 5$  is considered an outlier worth inspection. RMSZ is the root-mean-square of all Z scores of the bond lengths (or angles).

Mol	Chain	Bond lengths		Bond angles	
		RMSZ	$\# Z  > 5$	RMSZ	$\# Z  > 5$
1	A	0.55	0/2939	0.62	0/3972
1	B	0.56	1/2939 (0.0%)	0.64	0/3972
All	All	0.55	1/5878 (0.0%)	0.63	0/7944

All (1) bond length outliers are listed below:

Mol	Chain	Res	Type	Atoms	Z	Observed(Å)	Ideal(Å)
1	B	285	TYR	CD2-CE2	5.06	1.47	1.39

There are no bond angle outliers.

There are no chirality outliers.

There are no planarity outliers.

### 5.2 Too-close contacts [i](#)

In the following table, the Non-H and H(model) columns list the number of non-hydrogen atoms and hydrogen atoms in the chain respectively. The H(added) column lists the number of hydrogen atoms added and optimized by MolProbity. The Clashes column lists the number of clashes within the asymmetric unit, whereas Symm-Clashes lists symmetry related clashes.

Mol	Chain	Non-H	H(model)	H(added)	Clashes	Symm-Clashes
1	A	2872	0	2857	92	0
1	B	2872	0	2857	112	0
2	A	12	0	12	0	0
2	B	12	0	12	0	0
3	A	27	0	12	0	0
3	B	27	0	12	2	0
4	A	239	0	0	21	0
4	B	247	0	0	32	0

*Continued on next page...*

*Continued from previous page...*

Mol	Chain	Non-H	H(model)	H(added)	Clashes	Symm-Clashes
All	All	6308	0	5762	194	0

The all-atom clashscore is defined as the number of clashes found per 1000 atoms (including hydrogen atoms). The all-atom clashscore for this structure is 17.

All (194) close contacts within the same asymmetric unit are listed below, sorted by their clash magnitude.

Atom-1	Atom-2	Interatomic distance (Å)	Clash overlap (Å)
1:B:172:VAL:HG12	4:B:2216:HOH:O	1.41	1.19
1:A:53:THR:HB	4:A:2231:HOH:O	0.98	1.15
1:A:118:LYS:HE2	1:A:118:LYS:H	1.07	1.11
1:B:215:MET:HE3	1:B:219:ILE:HG12	1.36	1.05
1:A:295:MET:SD	1:A:334:MET:HG3	1.96	1.04
1:A:253:ARG:HG2	1:A:253:ARG:HH11	1.26	1.00
1:B:202:ILE:CD1	1:B:204:VAL:HG12	1.93	0.98
1:B:118:LYS:HE3	4:B:2194:HOH:O	1.63	0.96
1:B:202:ILE:HD12	1:B:204:VAL:HG12	1.49	0.93
1:A:195:ASN:OD1	1:A:196:PRO:HD2	1.67	0.92
1:A:202:ILE:HD11	1:B:193:TYR:CE2	2.05	0.91
1:A:215:MET:HG3	1:B:215:MET:HG3	1.52	0.90
1:B:12:CYS:HB3	4:B:2145:HOH:O	1.72	0.87
1:B:230:LYS:HG2	4:B:2224:HOH:O	1.74	0.86
1:B:195:ASN:HB3	4:B:2150:HOH:O	1.76	0.86
1:B:216:ARG:CG	1:B:216:ARG:HH21	1.89	0.86
1:A:215:MET:HE3	1:B:215:MET:HE2	1.58	0.85
1:B:76:MET:HB2	1:B:81:MET:HE3	1.57	0.84
1:A:118:LYS:HE2	1:A:118:LYS:N	1.91	0.84
1:B:147:VAL:HG22	1:B:150:GLU:HB3	1.59	0.82
1:A:215:MET:CE	1:B:215:MET:HE2	2.09	0.81
1:A:234:ASN:H	1:A:237:ASN:ND2	1.78	0.81
1:A:234:ASN:H	1:A:237:ASN:HD22	1.25	0.81
1:A:332:HIS:HD2	1:A:334:MET:H	1.29	0.80
1:B:51:CYS:HB2	4:B:2209:HOH:O	1.83	0.78
1:A:253:ARG:CG	1:A:253:ARG:HH11	1.95	0.78
1:B:167:GLU:HG2	4:B:2211:HOH:O	1.84	0.78
1:A:118:LYS:H	1:A:118:LYS:CE	1.93	0.77
1:B:106:ASN:ND2	4:B:2159:HOH:O	2.17	0.76
1:B:216:ARG:HG2	1:B:216:ARG:HH21	1.51	0.75
1:B:332:HIS:HD2	1:B:334:MET:H	1.36	0.73
1:A:64:GLU:OE1	4:A:2102:HOH:O	2.07	0.72
1:B:159:THR:CG2	4:B:2037:HOH:O	2.38	0.72

*Continued on next page...*

*Continued from previous page...*

Atom-1	Atom-2	Interatomic distance (Å)	Clash overlap (Å)
1:A:215:MET:CE	1:B:215:MET:CE	2.67	0.72
1:A:159:THR:HG21	4:A:2023:HOH:O	1.89	0.71
1:B:167:GLU:HG3	1:B:168:PRO:HD2	1.71	0.71
1:A:280:LYS:NZ	1:A:321:ASN:OD1	2.24	0.71
1:A:11:LEU:HD22	4:A:2231:HOH:O	1.92	0.68
1:A:215:MET:HE3	1:A:219:ILE:HG12	1.75	0.68
1:A:215:MET:HE2	1:B:215:MET:CE	2.23	0.68
1:A:202:ILE:HD11	1:B:193:TYR:HE2	1.54	0.68
1:B:76:MET:HB2	1:B:81:MET:CE	2.23	0.67
1:B:51:CYS:CB	4:B:2209:HOH:O	2.40	0.67
1:B:115:ASP:OD1	4:B:2222:HOH:O	2.11	0.67
1:B:76:MET:HG3	1:B:81:MET:HE2	1.76	0.67
1:A:253:ARG:HG2	1:A:253:ARG:NH1	2.07	0.66
1:B:228:GLU:OE1	4:B:2186:HOH:O	2.14	0.66
1:A:283:HIS:HE1	4:A:2022:HOH:O	1.78	0.66
1:B:167:GLU:HB2	4:B:2207:HOH:O	1.96	0.65
1:A:-2:GLY:HA2	1:A:46:ASP:O	1.96	0.65
1:B:-2:GLY:HA2	1:B:46:ASP:O	1.97	0.65
1:B:279:MET:O	1:B:283:HIS:HD2	1.79	0.65
1:B:15:LEU:CD1	1:B:76:MET:HE3	2.28	0.64
1:B:295:MET:SD	1:B:334:MET:HG3	2.37	0.64
1:A:234:ASN:N	1:A:237:ASN:HD22	1.96	0.64
1:B:234:ASN:H	1:B:237:ASN:HD22	1.45	0.64
1:A:216:ARG:NE	4:A:2026:HOH:O	2.20	0.64
1:A:215:MET:HE3	1:B:215:MET:CE	2.28	0.64
1:B:323:LYS:HE2	4:B:2114:HOH:O	1.97	0.64
1:A:112:ARG:HD3	4:A:2183:HOH:O	1.98	0.64
1:B:147:VAL:HG21	1:B:150:GLU:OE1	1.98	0.63
1:B:283:HIS:HE1	1:B:316:TYR:OH	1.82	0.63
1:A:334:MET:CE	4:A:2003:HOH:O	2.46	0.63
1:B:211:GLN:NE2	4:B:2164:HOH:O	2.32	0.63
1:A:211:GLN:NE2	4:A:2129:HOH:O	2.33	0.62
1:B:76:MET:CB	1:B:81:MET:CE	2.78	0.62
1:B:11:LEU:HD13	1:B:51:CYS:SG	2.38	0.62
1:B:15:LEU:HD12	1:B:76:MET:HE3	1.81	0.62
1:B:234:ASN:H	1:B:237:ASN:ND2	1.97	0.61
1:B:159:THR:HG23	4:B:2037:HOH:O	2.00	0.61
1:A:162:ARG:HD2	4:A:2184:HOH:O	2.01	0.60
1:A:167:GLU:HG3	1:A:168:PRO:CD	2.31	0.60
1:A:41:ARG:HD2	4:A:2182:HOH:O	2.01	0.60
1:A:83:ARG:O	1:A:85:LYS:HD2	2.02	0.59

*Continued on next page...*

*Continued from previous page...*

Atom-1	Atom-2	Interatomic distance (Å)	Clash overlap (Å)
1:B:324[A]:GLU:OE1	1:B:324[A]:GLU:HA	2.01	0.59
1:A:279:MET:O	1:A:283:HIS:HD2	1.85	0.59
1:B:125:HIS:CD2	1:B:366:LEU:O	2.55	0.59
1:B:216:ARG:CG	1:B:216:ARG:NH2	2.58	0.58
1:A:367:SER:HB2	4:A:2116:HOH:O	2.02	0.58
1:A:253:ARG:CG	1:A:253:ARG:NH1	2.59	0.58
1:A:183:PRO:HB2	1:A:282:TYR:OH	2.04	0.58
1:A:215:MET:HE2	1:B:215:MET:HE3	1.84	0.58
1:A:-5:ALA:N	1:A:-4:PRO:HD2	2.18	0.58
1:A:195:ASN:CG	1:A:196:PRO:HD2	2.25	0.57
1:A:147:VAL:HG22	1:A:150:GLU:HB3	1.86	0.57
1:B:159:THR:HG21	4:B:2060:HOH:O	2.03	0.57
1:A:219:ILE:O	1:A:223:GLN:HG3	2.05	0.57
1:B:-5:ALA:N	1:B:-4:PRO:CD	2.67	0.57
1:A:147:VAL:CG2	1:A:150:GLU:OE1	2.53	0.57
1:A:233:PRO:HA	1:A:237:ASN:HD22	1.70	0.56
1:B:334:MET:CE	4:B:2003:HOH:O	2.53	0.56
1:B:202:ILE:CD1	1:B:204:VAL:CG1	2.75	0.56
1:B:334:MET:HE1	1:B:336:ARG:HH12	1.70	0.56
1:B:214:PRO:HG2	4:B:2206:HOH:O	2.06	0.55
1:A:61:ASP:OD1	1:A:63:THR:OG1	2.24	0.54
1:B:196:PRO:HD2	4:B:2172:HOH:O	2.06	0.54
1:A:194:TYR:HA	1:A:200:GLN:O	2.07	0.54
1:B:213:LEU:HD23	1:B:222:ILE:HG12	1.89	0.54
1:B:225:LEU:HD21	1:B:237:ASN:HB3	1.88	0.53
1:A:195:ASN:HB3	4:A:2190:HOH:O	2.09	0.53
1:B:76:MET:HG3	1:B:81:MET:CE	2.39	0.53
1:B:76:MET:CB	1:B:81:MET:HE2	2.39	0.52
1:A:96:THR:HG23	4:A:2038:HOH:O	2.09	0.52
1:A:209:GLY:HA3	4:A:2103:HOH:O	2.08	0.52
1:B:292:GLU:OE1	1:B:332:HIS:HE1	1.92	0.52
1:A:23:PRO:HB3	1:A:85:LYS:HD3	1.91	0.52
1:B:147:VAL:CG2	1:B:150:GLU:OE1	2.59	0.51
1:B:185:THR:OG1	3:B:2001:ADP:H4'	2.10	0.51
1:B:202:ILE:HD11	1:B:204:VAL:HG12	1.86	0.51
1:B:76:MET:CG	1:B:81:MET:HE2	2.41	0.51
1:A:332:HIS:CD2	1:A:334:MET:H	2.18	0.51
1:B:147:VAL:HG22	1:B:150:GLU:CB	2.34	0.51
1:B:172:VAL:CG1	4:B:2216:HOH:O	2.24	0.51
1:A:125:HIS:HD2	1:A:367:SER:HB3	1.76	0.50
1:B:202:ILE:HD11	1:B:204:VAL:CG1	2.40	0.50

*Continued on next page...*

*Continued from previous page...*

Atom-1	Atom-2	Interatomic distance (Å)	Clash overlap (Å)
1:A:73:ILE:HA	1:A:81:MET:CE	2.42	0.50
1:B:235:TYR:CD1	1:B:289:VAL:HG22	2.47	0.49
1:B:233:PRO:HA	1:B:237:ASN:HD22	1.78	0.49
1:A:328:GLU:HG2	4:A:2066:HOH:O	2.13	0.49
1:A:27:VAL:HA	1:A:88:VAL:O	2.13	0.49
1:B:-5:ALA:N	1:B:-4:PRO:HD3	2.28	0.48
1:A:167:GLU:HG3	1:A:168:PRO:HD2	1.95	0.48
1:B:9:HIS:HE1	4:B:2112:HOH:O	1.95	0.48
1:B:279:MET:O	1:B:283:HIS:CD2	2.64	0.48
1:B:216:ARG:HG3	1:B:216:ARG:NH2	2.28	0.48
1:B:283:HIS:CE1	1:B:316:TYR:OH	2.66	0.48
1:B:15:LEU:HD12	1:B:76:MET:CE	2.43	0.48
1:B:288:ARG:HD3	4:B:2206:HOH:O	2.14	0.48
1:A:292:GLU:OE1	1:A:332:HIS:HE1	1.97	0.47
1:B:216:ARG:HH21	1:B:216:ARG:HG3	1.73	0.47
1:B:334:MET:HE1	1:B:336:ARG:NH1	2.28	0.47
1:A:233:PRO:HA	1:A:237:ASN:ND2	2.29	0.47
1:A:195:ASN:CB	1:A:196:PRO:HD2	2.43	0.47
1:A:283:HIS:CE1	4:A:2022:HOH:O	2.59	0.47
1:B:215:MET:HG2	4:B:2110:HOH:O	2.14	0.47
1:A:68:PHE:N	1:A:68:PHE:CD1	2.80	0.47
1:A:194:TYR:O	1:A:195:ASN:HB2	2.14	0.47
1:B:81:MET:HG3	4:B:2210:HOH:O	2.14	0.47
1:A:90:ASN:HA	1:A:129:LEU:O	2.15	0.47
1:A:226:HIS:HB2	1:A:233:PRO:HD3	1.97	0.46
1:A:167:GLU:HG3	1:A:168:PRO:HD3	1.96	0.46
1:A:160:GLN:O	1:A:163:THR:HB	2.15	0.46
1:B:-5:ALA:H3	1:B:-4:PRO:HD3	1.80	0.46
1:A:226:HIS:HD2	1:A:226:HIS:O	1.99	0.46
1:B:-5:ALA:H2	1:B:-4:PRO:CD	2.29	0.46
1:A:255:SER:HA	4:A:2138:HOH:O	2.16	0.46
1:A:295:MET:SD	1:A:334:MET:CG	2.87	0.46
1:A:32:GLY:HA3	4:A:2107:HOH:O	2.16	0.45
1:A:204:VAL:HA	1:A:205:PRO:HD3	1.76	0.45
1:B:11:LEU:CD1	1:B:51:CYS:SG	3.04	0.45
1:B:167:GLU:HG3	1:B:168:PRO:CD	2.44	0.45
1:B:177:ARG:HB2	1:B:299:PRO:HA	2.00	0.44
1:A:279:MET:O	1:A:283:HIS:CD2	2.69	0.44
1:B:160:GLN:O	1:B:163:THR:HB	2.17	0.44
1:B:361:ARG:NH1	4:B:2215:HOH:O	2.50	0.44
1:B:167:GLU:CG	4:B:2211:HOH:O	2.55	0.44

*Continued on next page...*

*Continued from previous page...*

Atom-1	Atom-2	Interatomic distance (Å)	Clash overlap (Å)
1:B:161:TRP:O	1:B:165:GLU:HB2	2.18	0.44
1:A:195:ASN:OD1	1:A:196:PRO:CD	2.53	0.43
1:A:225:LEU:HD21	1:A:237:ASN:HB3	1.99	0.43
1:B:22:ALA:H	1:B:83:ARG:HD3	1.82	0.43
1:B:194:TYR:O	1:B:195:ASN:HB2	2.19	0.43
1:B:288:ARG:CD	4:B:2206:HOH:O	2.66	0.43
1:A:73:ILE:HA	1:A:81:MET:HE3	2.00	0.43
1:B:334:MET:HE3	4:B:2003:HOH:O	2.16	0.43
1:B:317:ARG:CZ	1:B:347:ARG:HH22	2.31	0.43
1:A:276:CYS:O	1:A:280:LYS:HG3	2.19	0.43
1:A:147:VAL:HG22	1:A:150:GLU:CB	2.48	0.43
1:B:130:ASN:HD22	1:B:133:GLU:H	1.66	0.42
1:B:58:LYS:HD3	1:B:58:LYS:HA	1.50	0.42
1:B:177:ARG:HB3	1:B:191:LEU:HD11	2.01	0.42
1:B:318:ASN:OD1	1:B:318:ASN:C	2.58	0.42
1:B:185:THR:N	3:B:2001:ADP:H4'	2.35	0.42
1:A:47:SER:HB3	4:A:2211:HOH:O	2.19	0.42
1:B:130:ASN:ND2	4:B:2034:HOH:O	2.53	0.42
1:A:316:TYR:HE1	1:A:325:MET:HE1	1.85	0.42
1:B:332:HIS:CD2	1:B:334:MET:H	2.26	0.41
1:B:37:MET:HE3	1:B:37:MET:HB3	1.94	0.41
1:A:215:MET:CE	1:B:215:MET:HE3	2.43	0.41
1:B:76:MET:CG	1:B:81:MET:CE	2.98	0.41
1:B:214:PRO:HD2	4:B:2206:HOH:O	2.20	0.41
1:B:299:PRO:O	1:B:343:VAL:HG22	2.20	0.41
1:A:177:ARG:HB2	1:A:299:PRO:HA	2.01	0.41
1:A:159:THR:HB	1:A:341:SER:O	2.20	0.41
1:A:125:HIS:CD2	1:A:367:SER:HB3	2.55	0.41
1:A:8:LEU:HG	1:A:75:LEU:HD22	2.01	0.41
1:B:180:VAL:O	1:B:189:SER:HA	2.21	0.41
1:A:3:ILE:HD12	4:A:2036:HOH:O	2.20	0.41
1:A:313:ALA:O	1:A:317:ARG:HG3	2.21	0.41
1:A:116:TYR:HB3	1:A:121:PHE:CD1	2.55	0.41
1:B:82:LYS:HB3	4:B:2205:HOH:O	2.21	0.41
1:A:179:LEU:HB3	1:A:302:ILE:HG12	2.03	0.41
1:B:191:LEU:HB2	1:B:206:LEU:HD11	2.04	0.41
1:B:194:TYR:O	1:B:195:ASN:CB	2.70	0.40
1:A:150:GLU:OE2	1:A:350:LYS:NZ	2.53	0.40

There are no symmetry-related clashes.

## 5.3 Torsion angles

### 5.3.1 Protein backbone

In the following table, the Percentiles column shows the percent Ramachandran outliers of the chain as a percentile score with respect to all X-ray entries followed by that with respect to entries of similar resolution.

The Analysed column shows the number of residues for which the backbone conformation was analysed, and the total number of residues.

Mol	Chain	Analysed	Favoured	Allowed	Outliers	Percentiles	
1	A	368/373 (99%)	348 (95%)	19 (5%)	1 (0%)	46	45
1	B	368/373 (99%)	355 (96%)	12 (3%)	1 (0%)	46	45
All	All	736/746 (99%)	703 (96%)	31 (4%)	2 (0%)	46	45

All (2) Ramachandran outliers are listed below:

Mol	Chain	Res	Type
1	B	195	ASN
1	A	195	ASN

### 5.3.2 Protein sidechains

In the following table, the Percentiles column shows the percent sidechain outliers of the chain as a percentile score with respect to all X-ray entries followed by that with respect to entries of similar resolution.

The Analysed column shows the number of residues for which the sidechain conformation was analysed, and the total number of residues.

Mol	Chain	Analysed	Rotameric	Outliers	Percentiles	
1	A	307/308 (100%)	293 (95%)	14 (5%)	33	31
1	B	307/308 (100%)	297 (97%)	10 (3%)	45	47
All	All	614/616 (100%)	590 (96%)	24 (4%)	39	39

All (24) residues with a non-rotameric sidechain are listed below:

Mol	Chain	Res	Type
1	A	37	MET
1	A	54	ARG
1	A	59	ARG
1	A	85	LYS

*Continued on next page...*

*Continued from previous page...*

Mol	Chain	Res	Type
1	A	106	ASN
1	A	118	LYS
1	A	159	THR
1	A	163	THR
1	A	167	GLU
1	A	172	VAL
1	A	202	ILE
1	A	204	VAL
1	A	215	MET
1	A	304	LEU
1	B	37	MET
1	B	44	LYS
1	B	58	LYS
1	B	106	ASN
1	B	159	THR
1	B	172	VAL
1	B	204	VAL
1	B	215	MET
1	B	281	LYS
1	B	304	LEU

Some sidechains can be flipped to improve hydrogen bonding and reduce clashes. All (16) such sidechains are listed below:

Mol	Chain	Res	Type
1	A	106	ASN
1	A	125	HIS
1	A	130	ASN
1	A	166	GLN
1	A	211	GLN
1	A	237	ASN
1	A	283	HIS
1	A	320	GLN
1	A	332	HIS
1	B	9	HIS
1	B	125	HIS
1	B	130	ASN
1	B	166	GLN
1	B	237	ASN
1	B	283	HIS
1	B	332	HIS

### 5.3.3 RNA ⓘ

There are no RNA molecules in this entry.

## 5.4 Non-standard residues in protein, DNA, RNA chains ⓘ

There are no non-standard protein/DNA/RNA residues in this entry.

## 5.5 Carbohydrates ⓘ

There are no carbohydrates in this entry.

## 5.6 Ligand geometry ⓘ

4 ligands are modelled in this entry.

In the following table, the Counts columns list the number of bonds (or angles) for which Mogul statistics could be retrieved, the number of bonds (or angles) that are observed in the model and the number of bonds (or angles) that are defined in the chemical component dictionary. The Link column lists molecule types, if any, to which the group is linked. The Z score for a bond length (or angle) is the number of standard deviations the observed value is removed from the expected value. A bond length (or angle) with  $|Z| > 2$  is considered an outlier worth inspection. RMSZ is the root-mean-square of all Z scores of the bond lengths (or angles).

Mol	Type	Chain	Res	Link	Bond lengths			Bond angles		
					Counts	RMSZ	$\# Z  > 2$	Counts	RMSZ	$\# Z  > 2$
2	BGC	A	1001	-	12,12,12	0.71	0	17,17,17	1.58	5 (29%)
3	ADP	A	2001	-	22,29,29	1.04	2 (9%)	27,45,45	1.87	4 (14%)
2	BGC	B	1001	-	12,12,12	0.36	0	17,17,17	1.19	3 (17%)
3	ADP	B	2001	-	22,29,29	1.13	2 (9%)	27,45,45	1.91	3 (11%)

In the following table, the Chirals column lists the number of chiral outliers, the number of chiral centers analysed, the number of these observed in the model and the number defined in the chemical component dictionary. Similar counts are reported in the Torsion and Rings columns. '-' means no outliers of that kind were identified.

Mol	Type	Chain	Res	Link	Chirals	Torsions	Rings
2	BGC	A	1001	-	-	0/2/22/22	0/1/1/1
3	ADP	A	2001	-	-	0/12/32/32	0/3/3/3
2	BGC	B	1001	-	-	0/2/22/22	0/1/1/1
3	ADP	B	2001	-	-	0/12/32/32	0/3/3/3

All (4) bond length outliers are listed below:

Mol	Chain	Res	Type	Atoms	Z	Observed(Å)	Ideal(Å)
3	A	2001	ADP	O4'-C1'	2.21	1.44	1.41
3	B	2001	ADP	O4'-C1'	2.37	1.44	1.41
3	A	2001	ADP	C5-C4	3.17	1.47	1.40
3	B	2001	ADP	C5-C4	3.26	1.47	1.40

All (15) bond angle outliers are listed below:

Mol	Chain	Res	Type	Atoms	Z	Observed(°)	Ideal(°)
3	B	2001	ADP	N3-C2-N1	-7.70	123.00	128.89
3	A	2001	ADP	N3-C2-N1	-7.51	123.15	128.89
2	B	1001	BGC	C1-O5-C5	-2.98	107.95	113.47
3	A	2001	ADP	C4-C5-N7	-2.86	106.85	109.48
3	B	2001	ADP	C4-C5-N7	-2.78	106.92	109.48
2	A	1001	BGC	C6-C5-C4	-2.51	106.83	113.02
2	A	1001	BGC	C1-O5-C5	-2.28	109.26	113.47
2	B	1001	BGC	C1-C2-C3	-2.15	107.22	110.43
2	A	1001	BGC	C1-C2-C3	-2.11	107.29	110.43
3	A	2001	ADP	C2-N1-C6	2.01	122.36	118.77
3	B	2001	ADP	C2-N1-C6	2.02	122.38	118.77
2	B	1001	BGC	O1-C1-C2	2.18	115.05	109.21
3	A	2001	ADP	O3B-PB-O2B	2.21	115.80	107.38
2	A	1001	BGC	O5-C5-C4	2.56	114.49	109.68
2	A	1001	BGC	O5-C5-C6	3.11	114.21	106.36

There are no chirality outliers.

There are no torsion outliers.

There are no ring outliers.

1 monomer is involved in 2 short contacts:

Mol	Chain	Res	Type	Clashes	Symm-Clashes
3	B	2001	ADP	2	0

## 5.7 Other polymers ⓘ

There are no such residues in this entry.

## 5.8 Polymer linkage issues ⓘ

There are no chain breaks in this entry.

## 6 Fit of model and data

### 6.1 Protein, DNA and RNA chains

In the following table, the column labelled ‘#RSRZ> 2’ contains the number (and percentage) of RSRZ outliers, followed by percent RSRZ outliers for the chain as percentile scores relative to all X-ray entries and entries of similar resolution. The OWAB column contains the minimum, median, 95<sup>th</sup> percentile and maximum values of the occupancy-weighted average B-factor per residue. The column labelled ‘Q< 0.9’ lists the number of (and percentage) of residues with an average occupancy less than 0.9.

Mol	Chain	Analysed	<RSRZ>	#RSRZ>2	OWAB(Å <sup>2</sup> )	Q<0.9
1	A	370/373 (99%)	0.51	33 (8%) 12 16	23, 38, 64, 77	1 (0%)
1	B	370/373 (99%)	0.47	33 (8%) 12 16	20, 37, 63, 76	1 (0%)
All	All	740/746 (99%)	0.49	66 (8%) 12 16	20, 38, 64, 77	2 (0%)

All (66) RSRZ outliers are listed below:

Mol	Chain	Res	Type	RSRZ
1	B	-3	ALA	6.2
1	A	44	LYS	6.1
1	A	43	GLY	5.3
1	B	44	LYS	5.3
1	A	80	VAL	5.1
1	B	45	ASN	4.7
1	B	254	GLY	4.6
1	A	22	ALA	4.6
1	B	43	GLY	4.4
1	A	18	PRO	4.2
1	B	46	ASP	4.2
1	A	19	ALA	3.8
1	A	21	ASN	3.7
1	B	-2	GLY	3.7
1	B	20	TRP	3.7
1	A	79	SER	3.5
1	A	45	ASN	3.4
1	A	46	ASP	3.4
1	B	0	HIS	3.4
1	A	-4	PRO	3.3
1	B	81	MET	3.1
1	A	20	TRP	3.1
1	B	-4	PRO	3.1
1	A	-5	ALA	3.1

*Continued on next page...*

*Continued from previous page...*

Mol	Chain	Res	Type	RSRZ
1	A	83	ARG	3.1
1	B	48	VAL	3.0
1	A	78	ALA	2.9
1	B	80	VAL	2.9
1	A	47	SER	2.9
1	B	24	LEU	2.9
1	A	23	PRO	2.9
1	B	42	GLU	2.8
1	B	22	ALA	2.8
1	A	85	LYS	2.8
1	B	-5	ALA	2.8
1	B	366	LEU	2.7
1	A	24	LEU	2.7
1	B	40	VAL	2.6
1	B	258	PRO	2.6
1	A	86	ALA	2.6
1	A	255	SER	2.5
1	B	82	LYS	2.5
1	A	194	TYR	2.5
1	A	366	LEU	2.5
1	B	302	ILE	2.5
1	A	42	GLU	2.4
1	A	82	LYS	2.5
1	A	-3	ALA	2.4
1	A	360	TYR	2.4
1	B	84	VAL	2.4
1	B	200	GLN	2.4
1	A	84	VAL	2.3
1	A	302	ILE	2.3
1	B	125	HIS	2.3
1	B	208	LEU	2.3
1	A	208	LEU	2.3
1	B	123	PRO	2.2
1	B	253	ARG	2.2
1	A	25	THR	2.1
1	A	254	GLY	2.1
1	B	41	ARG	2.1
1	B	289	VAL	2.1
1	B	256	ARG	2.0
1	B	21	ASN	2.0
1	B	290	GLY	2.0
1	A	179	LEU	2.0

## 6.2 Non-standard residues in protein, DNA, RNA chains [i](#)

There are no non-standard protein/DNA/RNA residues in this entry.

## 6.3 Carbohydrates [i](#)

There are no carbohydrates in this entry.

## 6.4 Ligands [i](#)

In the following table, the Atoms column lists the number of modelled atoms in the group and the number defined in the chemical component dictionary. LLDF column lists the quality of electron density of the group with respect to its neighbouring residues in protein, DNA or RNA chains. The B-factors column lists the minimum, median, 95<sup>th</sup> percentile and maximum values of B factors of atoms in the group. The column labelled 'Q< 0.9' lists the number of atoms with occupancy less than 0.9.

Mol	Type	Chain	Res	Atoms	RSCC	RSR	LLDF	B-factors( $\text{\AA}^2$ )	Q<0.9
3	ADP	B	2001	27/27	0.90	0.23	7.17	54,62,66,67	0
3	ADP	A	2001	27/27	0.97	0.13	1.24	43,55,59,64	0
2	BGC	A	1001	12/12	0.97	0.17	0.79	26,29,35,35	0
2	BGC	B	1001	12/12	0.98	0.14	0.28	28,31,37,39	0

## 6.5 Other polymers [i](#)

There are no such residues in this entry.