



Full wwPDB X-ray Structure Validation Report ⓘ

Feb 1, 2016 – 11:47 AM GMT

PDB ID : 3Q2H
Title : Adamts1 in complex with N-hydroxyformamide inhibitors of ADAM-TS4
Authors : Gerhardt, S.; Hargreaves, D.
Deposited on : 2010-12-20
Resolution : 2.33 Å(reported)

This is a Full wwPDB X-ray Structure Validation Report for a publicly released PDB entry.
We welcome your comments at validation@mail.wwpdb.org
A user guide is available at
<http://wwpdb.org/validation/2016/XrayValidationReportHelp>
with specific help available everywhere you see the ⓘ symbol.

The following versions of software and data (see [references ⓘ](#)) were used in the production of this report:

MolProbity : 4.02b-467
Mogul : 1.7 (RC4), CSD as536be (2015)
Xtriage (Phenix) : 1.9-1692
EDS : rb-20026688
Percentile statistics : 20151230.v01 (using entries in the PDB archive December 30th 2015)
Refmac : 5.8.0135
CCP4 : 6.5.0
Ideal geometry (proteins) : Engh & Huber (2001)
Ideal geometry (DNA, RNA) : Parkinson et al. (1996)
Validation Pipeline (wwPDB-VP) : trunk26865

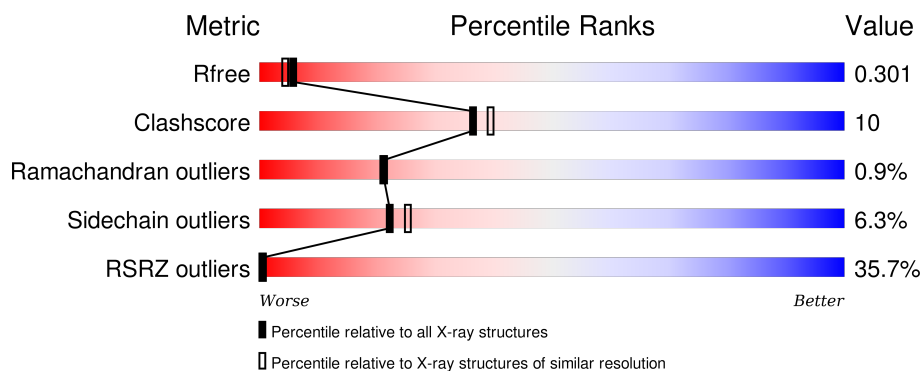
1 Overall quality at a glance

The following experimental techniques were used to determine the structure:

X-RAY DIFFRACTION

The reported resolution of this entry is 2.33 Å.

Percentile scores (ranging between 0-100) for global validation metrics of the entry are shown in the following graphic. The table shows the number of entries on which the scores are based.



Metric	Whole archive (#Entries)	Similar resolution (#Entries, resolution range(Å))
R_{free}	91344	1406 (2.36-2.32)
Clashscore	102246	1509 (2.36-2.32)
Ramachandran outliers	100387	1490 (2.36-2.32)
Sidechain outliers	100360	1491 (2.36-2.32)
RSRZ outliers	91569	1412 (2.36-2.32)

The table below summarises the geometric issues observed across the polymeric chains and their fit to the electron density. The red, orange, yellow and green segments on the lower bar indicate the fraction of residues that contain outliers for ≥ 3 , 2, 1 and 0 types of geometric quality criteria. A grey segment represents the fraction of residues that are not modelled. The numeric value for each fraction is indicated below the corresponding segment, with a dot representing fractions $\leq 5\%$. The upper red bar (where present) indicates the fraction of residues that have poor fit to the electron density. The numeric value is given above the bar.

Mol	Chain	Length	Quality of chain
1	A	297	
1	B	297	

2 Entry composition

There are 8 unique types of molecules in this entry. The entry contains 4545 atoms, of which 0 are hydrogens and 0 are deuteriums.

In the tables below, the ZeroOcc column contains the number of atoms modelled with zero occupancy, the AltConf column contains the number of residues with at least one atom in alternate conformation and the Trace column contains the number of residues modelled with at most 2 atoms.

- Molecule 1 is a protein called A disintegrin and metalloproteinase with thrombospondin motifs 1.

Mol	Chain	Residues	Atoms					ZeroOcc	AltConf	Trace
1	A	284	Total	C	N	O	S	0	0	0
			2181	1354	379	423	25			
1	B	282	Total	C	N	O	S	0	0	0
			2169	1346	380	418	25			

There are 8 discrepancies between the modelled and reference sequences:

Chain	Residue	Modelled	Actual	Comment	Reference
A	297	LEU	-	EXPRESSION TAG	UNP Q9UHI8
A	298	VAL	-	EXPRESSION TAG	UNP Q9UHI8
A	299	PRO	-	EXPRESSION TAG	UNP Q9UHI8
A	300	ARG	-	EXPRESSION TAG	UNP Q9UHI8
B	297	LEU	-	EXPRESSION TAG	UNP Q9UHI8
B	298	VAL	-	EXPRESSION TAG	UNP Q9UHI8
B	299	PRO	-	EXPRESSION TAG	UNP Q9UHI8
B	300	ARG	-	EXPRESSION TAG	UNP Q9UHI8

- Molecule 2 is ZINC ION (three-letter code: ZN) (formula: Zn).

Mol	Chain	Residues	Atoms		ZeroOcc	AltConf
2	B	1	Total	Zn	0	0
			1	1		
2	A	1	Total	Zn	0	0
			1	1		

- Molecule 3 is CADMIUM ION (three-letter code: CD) (formula: Cd).

Mol	Chain	Residues	Atoms		ZeroOcc	AltConf
3	B	1	Total	Cd	0	0
			1	1		

Continued on next page...

Continued from previous page...

Mol	Chain	Residues	Atoms		ZeroOcc	AltConf
3	A	3	Total	Cd	0	0
			3	3		

- Molecule 4 is NICKEL (II) ION (three-letter code: NI) (formula: Ni).

Mol	Chain	Residues	Atoms		ZeroOcc	AltConf
4	B	5	Total	Ni	0	0
			5	5		
4	A	9	Total	Ni	0	0
			9	9		

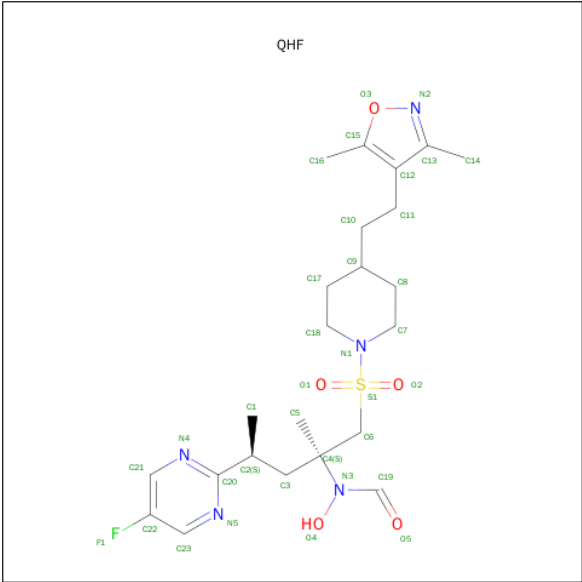
- Molecule 5 is MAGNESIUM ION (three-letter code: MG) (formula: Mg).

Mol	Chain	Residues	Atoms		ZeroOcc	AltConf
5	B	1	Total	Mg	0	0
			1	1		
5	A	2	Total	Mg	0	0
			2	2		

- Molecule 6 is SODIUM ION (three-letter code: NA) (formula: Na).

Mol	Chain	Residues	Atoms		ZeroOcc	AltConf
6	B	2	Total	Na	0	0
			2	2		
6	A	2	Total	Na	0	0
			2	2		

- Molecule 7 is N-[(2S,4S)-1-({4-[2-(3,5-DIMETHYL-1,2-OXAZOL-4-YL)ETHYL]PIPERIDI
N-1-YL}SULFONYL)-4-(5-FLUOROPYRIMIDIN-2-YL)-2-METHYLPENTAN-2-YL]-N-H
YDROXYFORMAMIDE (three-letter code: QHF) (formula: C₂₃H₃₄FN₅O₅S).



Mol	Chain	Residues	Atoms						ZeroOcc	AltConf
7	A	1	Total	C	F	N	O	S	0	0
			35	23	1	5	5	1		
7	B	1	Total	C	F	N	O	S	0	0
			35	23	1	5	5	1		

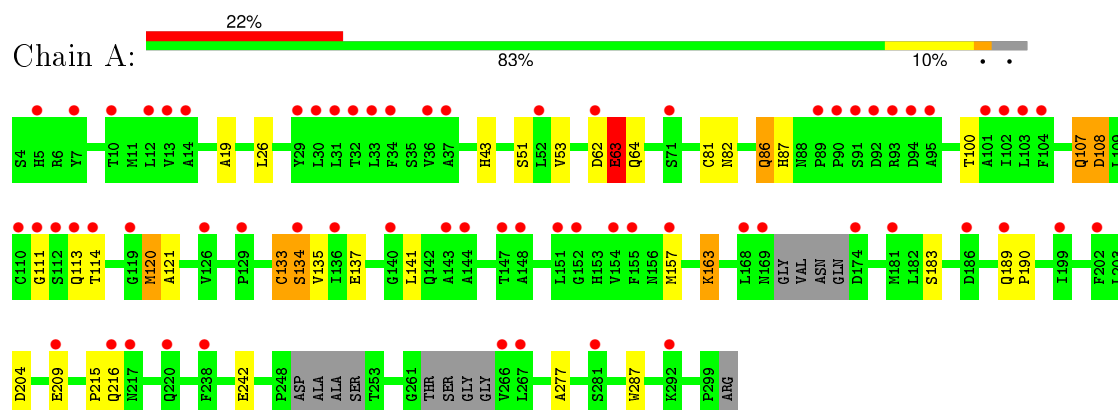
- Molecule 8 is water.

Mol	Chain	Residues	Atoms		ZeroOcc	AltConf
8	A	66	Total	O	0	0
			66	66		
8	B	32	Total	O	0	0
			32	32		

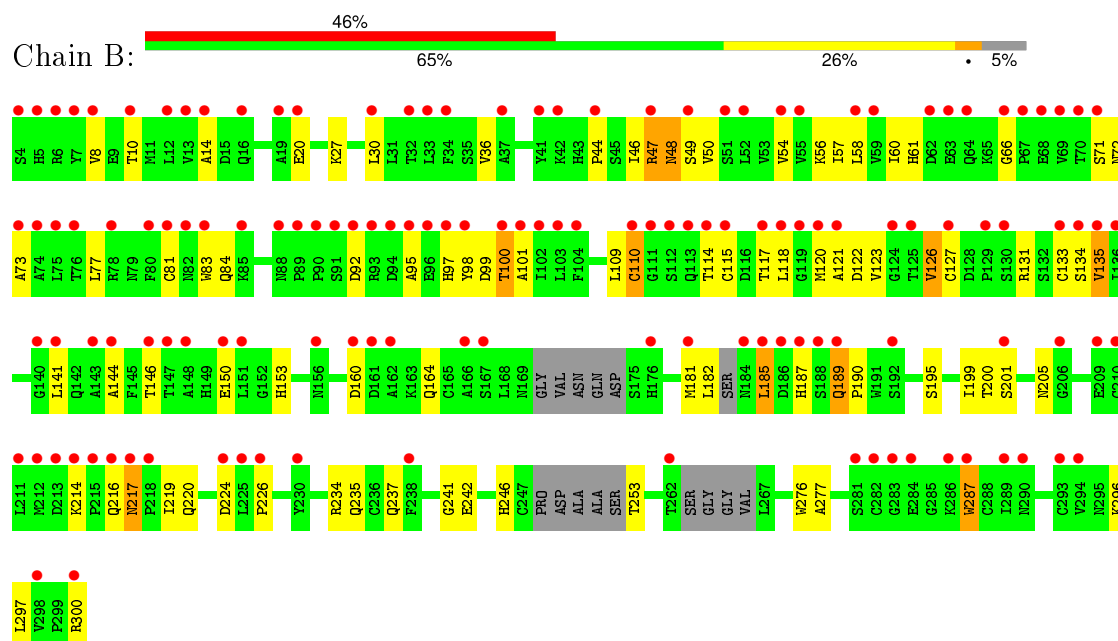
3 Residue-property plots

These plots are drawn for all protein, RNA and DNA chains in the entry. The first graphic for a chain summarises the proportions of errors displayed in the second graphic. The second graphic shows the sequence view annotated by issues in geometry and electron density. Residues are color-coded according to the number of geometric quality criteria for which they contain at least one outlier: green = 0, yellow = 1, orange = 2 and red = 3 or more. A red dot above a residue indicates a poor fit to the electron density ($RSRZ > 2$). Stretches of 2 or more consecutive residues without any outlier are shown as a green connector. Residues present in the sample, but not in the model, are shown in grey.

- Molecule 1: A disintegrin and metalloproteinase with thrombospondin motifs 1



- Molecule 1: A disintegrin and metalloproteinase with thrombospondin motifs 1



4 Data and refinement statistics

Property	Value	Source
Space group	P 1 21 1	Depositor
Cell constants a, b, c, α , β , γ	50.86Å 63.33Å 110.84Å 90.00° 91.24° 90.00°	Depositor
Resolution (Å)	27.70 – 2.33 27.70 – 2.33	Depositor EDS
% Data completeness (in resolution range)	98.6 (27.70-2.33) 98.7 (27.70-2.33)	Depositor EDS
R_{merge}	(Not available)	Depositor
R_{sym}	(Not available)	Depositor
$\langle I/\sigma(I) \rangle$ ¹	1.74 (at 2.34Å)	Xtriage
Refinement program	REFMAC 5.2.0019	Depositor
R, R_{free}	0.236 , 0.297 0.249 , 0.301	Depositor DCC
R_{free} test set	1514 reflections (5.33%)	DCC
Wilson B-factor (Å ²)	52.6	Xtriage
Anisotropy	0.315	Xtriage
Bulk solvent k_{sol} (e/Å ³), B_{sol} (Å ²)	0.38 , 84.4	EDS
Estimated twinning fraction	0.021 for h,-k,-l	Xtriage
L-test for twinning ²	$\langle L \rangle = 0.51$, $\langle L^2 \rangle = 0.34$	Xtriage
Outliers	0 of 29940 reflections	Xtriage
F_o, F_c correlation	0.93	EDS
Total number of atoms	4545	wwPDB-VP
Average B, all atoms (Å ²)	84.0	wwPDB-VP

Xtriage's analysis on translational NCS is as follows: *The largest off-origin peak in the Patterson function is 7.01% of the height of the origin peak. No significant pseudotranslation is detected.*

¹Intensities estimated from amplitudes.

²Theoretical values of $\langle |L| \rangle$, $\langle L^2 \rangle$ for acentric reflections are 0.5, 0.375 respectively for untwinned datasets, and 0.333, 0.2 for perfectly twinned datasets.

5 Model quality

5.1 Standard geometry

Bond lengths and bond angles in the following residue types are not validated in this section: NI, ZN, NA, MG, CD, QHF

The Z score for a bond length (or angle) is the number of standard deviations the observed value is removed from the expected value. A bond length (or angle) with $|Z| > 5$ is considered an outlier worth inspection. RMSZ is the root-mean-square of all Z scores of the bond lengths (or angles).

Mol	Chain	Bond lengths		Bond angles	
		RMSZ	$\# Z > 5$	RMSZ	$\# Z > 5$
1	A	0.75	2/2233 (0.1%)	0.77	3/3032 (0.1%)
1	B	0.58	1/2219 (0.0%)	0.66	1/3009 (0.0%)
All	All	0.67	3/4452 (0.1%)	0.72	4/6041 (0.1%)

Chiral center outliers are detected by calculating the chiral volume of a chiral center and verifying if the center is modelled as a planar moiety or with the opposite hand. A planarity outlier is detected by checking planarity of atoms in a peptide group, atoms in a mainchain group or atoms of a sidechain that are expected to be planar.

Mol	Chain	#Chirality outliers	#Planarity outliers
1	B	0	1

All (3) bond length outliers are listed below:

Mol	Chain	Res	Type	Atoms	Z	Observed(Å)	Ideal(Å)
1	A	63	GLU	CB-CG	8.56	1.68	1.52
1	A	133	CYS	CB-SG	-6.84	1.70	1.82
1	B	99	ASP	CG-OD1	5.60	1.38	1.25

All (4) bond angle outliers are listed below:

Mol	Chain	Res	Type	Atoms	Z	Observed(°)	Ideal(°)
1	A	108	ASP	CB-CG-OD1	9.57	126.91	118.30
1	A	108	ASP	CB-CG-OD2	-6.12	112.80	118.30
1	A	157	MET	CG-SD-CE	5.42	108.87	100.20
1	B	234	ARG	NE-CZ-NH1	5.08	122.84	120.30

There are no chirality outliers.

All (1) planarity outliers are listed below:

Mol	Chain	Res	Type	Group
1	B	48	ASN	Peptide

5.2 Too-close contacts ⓘ

In the following table, the Non-H and H(model) columns list the number of non-hydrogen atoms and hydrogen atoms in the chain respectively. The H(added) column lists the number of hydrogen atoms added and optimized by MolProbity. The Clashes column lists the number of clashes within the asymmetric unit, whereas Symm-Clashes lists symmetry related clashes.

Mol	Chain	Non-H	H(model)	H(added)	Clashes	Symm-Clashes
1	A	2181	0	2050	22	1
1	B	2169	0	2039	59	0
2	A	1	0	0	0	0
2	B	1	0	0	0	0
3	A	3	0	0	0	0
3	B	1	0	0	0	0
4	A	9	0	0	0	0
4	B	5	0	0	0	0
5	A	2	0	0	0	0
5	B	1	0	0	0	0
6	A	2	0	0	0	0
6	B	2	0	0	0	0
7	A	35	0	33	0	0
7	B	35	0	33	4	0
8	A	66	0	0	1	0
8	B	32	0	0	2	0
All	All	4545	0	4155	79	1

The all-atom clashscore is defined as the number of clashes found per 1000 atoms (including hydrogen atoms). The all-atom clashscore for this structure is 10.

All (79) close contacts within the same asymmetric unit are listed below, sorted by their clash magnitude.

Atom-1	Atom-2	Interatomic distance (Å)	Clash overlap (Å)
1:B:81:CYS:HG	1:B:133:CYS:HG	0.97	0.95
1:B:120:MET:HB3	1:B:135:VAL:HG13	1.58	0.83
1:B:77:LEU:HD22	1:B:120:MET:HG3	1.60	0.83
1:A:242:GLU:O	1:B:27:LYS:NZ	2.20	0.74
1:A:137:GLU:OE1	8:A:327:HOH:O	2.06	0.73
1:A:86:GLN:HG2	1:A:87:HIS:CD2	2.26	0.71
1:A:242:GLU:OE2	1:B:61:HIS:NE2	2.26	0.67

Continued on next page...

Continued from previous page...

Atom-1	Atom-2	Interatomic distance (Å)	Clash overlap (Å)
1:B:48:ASN:ND2	1:B:200:THR:OG1	2.25	0.67
1:B:8:VAL:CG2	1:B:50:VAL:CG1	2.73	0.66
1:B:242:GLU:OE2	8:B:311:HOH:O	2.15	0.64
1:B:181:MET:SD	1:B:182:LEU:N	2.70	0.64
1:B:141:LEU:HD12	1:B:277:ALA:HB2	1.79	0.64
1:B:235:GLN:HE22	1:B:277:ALA:H	1.43	0.63
1:B:44:PRO:O	1:B:47:ARG:N	2.30	0.60
1:B:77:LEU:HD13	1:B:135:VAL:HG12	1.83	0.60
1:B:54:VAL:HG11	1:B:57:ILE:HD11	1.84	0.59
1:B:126:VAL:HG13	1:B:127:CYS:H	1.66	0.59
1:B:14:ALA:HB2	1:B:30:LEU:HD11	1.83	0.59
1:B:46:ILE:HG23	1:B:48:ASN:H	1.69	0.58
1:B:8:VAL:HG23	1:B:50:VAL:HG12	1.87	0.57
1:B:98:TYR:CE2	1:B:101:ALA:HB2	2.40	0.57
1:B:8:VAL:CG2	1:B:50:VAL:HG12	2.37	0.55
1:A:120:MET:HB3	1:A:135:VAL:HG22	1.89	0.54
1:B:141:LEU:HD12	1:B:277:ALA:CB	2.38	0.54
1:B:160:ASP:OD1	8:B:304:HOH:O	2.18	0.54
1:B:182:LEU:HD21	7:B:2:QHF:C13	2.39	0.53
1:B:185:LEU:HD12	1:B:187:HIS:CD2	2.43	0.53
1:B:60:ILE:O	1:B:60:ILE:HG22	2.07	0.53
1:B:95:ALA:HB2	1:B:216:GLN:NE2	2.24	0.52
1:B:60:ILE:HD13	1:B:66:GLY:HA3	1.92	0.52
1:B:36:VAL:CG2	1:B:226:PRO:HG3	2.40	0.51
1:A:43:HIS:CE1	1:A:190:PRO:HD2	2.46	0.51
1:B:54:VAL:HG12	1:B:219:ILE:HD12	1.93	0.51
1:A:242:GLU:OE2	1:B:61:HIS:CE1	2.64	0.50
1:B:8:VAL:HG23	1:B:50:VAL:CG1	2.40	0.50
1:A:111:GLY:HA3	1:A:113:GLN:HE22	1.78	0.49
1:A:81:CYS:HG	1:A:133:CYS:HG	1.59	0.49
1:B:73:ALA:HB2	1:B:109:LEU:HB3	1.95	0.48
1:B:126:VAL:HG13	1:B:127:CYS:N	2.26	0.48
1:B:92:ASP:OD1	1:B:97:HIS:ND1	2.45	0.48
1:B:77:LEU:HD13	1:B:135:VAL:CG1	2.43	0.48
1:A:81:CYS:HA	1:A:133:CYS:HG	1.78	0.48
1:B:36:VAL:HB	1:B:144:ALA:HB1	1.96	0.48
1:A:19:ALA:HA	1:A:26:LEU:HD22	1.94	0.47
1:B:8:VAL:HG21	1:B:50:VAL:CG1	2.45	0.47
1:B:36:VAL:HG22	1:B:226:PRO:HG3	1.95	0.47
1:B:121:ALA:O	7:B:2:QHF:H21	2.15	0.46
1:B:77:LEU:O	1:B:81:CYS:HB2	2.15	0.46

Continued on next page...

Continued from previous page...

Atom-1	Atom-2	Interatomic distance (Å)	Clash overlap (Å)
1:B:118:LEU:HD12	7:B:2:QHF:H17A	1.97	0.46
1:B:246:HIS:NE2	1:B:276:TRP:CZ2	2.84	0.45
1:A:113:GLN:NE2	1:A:114:THR:H	2.15	0.45
1:B:10:THR:HA	1:B:100:THR:O	2.16	0.45
1:A:62:ASP:O	1:A:63:GLU:C	2.55	0.44
1:B:71:SER:HB2	1:B:110:CYS:SG	2.57	0.44
1:B:201:SER:O	1:B:205:ASN:ND2	2.50	0.44
1:B:216:GLN:O	1:B:217:ASN:C	2.55	0.44
1:B:287:TRP:CE3	1:B:296:LYS:HD2	2.53	0.44
1:A:141:LEU:HD12	1:A:277:ALA:HB2	1.99	0.43
1:B:237:GLN:HA	1:B:241:GLY:O	2.18	0.43
1:B:49:SER:OG	1:B:49:SER:O	2.29	0.43
7:B:2:QHF:H2	7:B:2:QHF:H5B	1.53	0.43
1:B:195:SER:O	1:B:199:ILE:HG22	2.19	0.43
1:A:163:LYS:HD2	1:A:163:LYS:HA	1.79	0.43
1:B:123:VAL:HA	1:B:153:HIS:O	2.19	0.42
1:A:121:ALA:HB2	1:A:134:SER:HB3	2.02	0.42
1:A:81:CYS:SG	1:A:133:CYS:SG	3.17	0.42
1:A:108:ASP:OD1	1:A:137:GLU:OE1	2.38	0.42
1:B:56:LYS:HE2	1:B:58:LEU:HD11	2.01	0.41
1:A:108:ASP:HA	1:A:137:GLU:CD	2.41	0.41
1:A:81:CYS:SG	1:A:133:CYS:HB2	2.60	0.41
1:B:189:GLN:HE21	1:B:189:GLN:HA	1.84	0.41
1:B:121:ALA:HB2	1:B:150:GLU:HB3	2.01	0.41
1:B:92:ASP:CG	1:B:97:HIS:HD1	2.24	0.41
1:A:53:VAL:HG21	1:A:215:PRO:HG3	2.02	0.41
1:A:107:GLN:O	1:A:137:GLU:HG3	2.21	0.41
1:B:146:THR:O	1:B:150:GLU:HG2	2.21	0.41
1:B:185:LEU:HD11	1:B:190:PRO:HB3	2.02	0.40
1:B:83:TRP:CE3	1:B:84:GLN:HA	2.56	0.40
1:B:122:ASP:HB3	1:B:131:ARG:HH21	1.87	0.40

All (1) symmetry-related close contacts are listed below. The label for Atom-2 includes the symmetry operator and encoded unit-cell translations to be applied.

Atom-1	Atom-2	Interatomic distance (Å)	Clash overlap (Å)
1:A:82:ASN:ND2	1:A:204:ASP:O[2_655]	2.18	0.02

5.3 Torsion angles [i](#)

5.3.1 Protein backbone [i](#)

In the following table, the Percentiles column shows the percent Ramachandran outliers of the chain as a percentile score with respect to all X-ray entries followed by that with respect to entries of similar resolution.

The Analysed column shows the number of residues for which the backbone conformation was analysed, and the total number of residues.

Mol	Chain	Analysed	Favoured	Allowed	Outliers	Percentiles	
1	A	276/297 (93%)	267 (97%)	8 (3%)	1 (0%)	39	45
1	B	272/297 (92%)	243 (89%)	25 (9%)	4 (2%)	13	10
All	All	548/594 (92%)	510 (93%)	33 (6%)	5 (1%)	21	21

All (5) Ramachandran outliers are listed below:

Mol	Chain	Res	Type
1	B	114	THR
1	A	209	GLU
1	B	220	GLN
1	B	126	VAL
1	B	217	ASN

5.3.2 Protein sidechains [i](#)

In the following table, the Percentiles column shows the percent sidechain outliers of the chain as a percentile score with respect to all X-ray entries followed by that with respect to entries of similar resolution.

The Analysed column shows the number of residues for which the sidechain conformation was analysed, and the total number of residues.

Mol	Chain	Analysed	Rotameric	Outliers	Percentiles	
1	A	247/256 (96%)	234 (95%)	13 (5%)	28	34
1	B	244/256 (95%)	226 (93%)	18 (7%)	17	18
All	All	491/512 (96%)	460 (94%)	31 (6%)	22	25

All (31) residues with a non-rotameric sidechain are listed below:

Mol	Chain	Res	Type
1	A	51	SER

Continued on next page...

Continued from previous page...

Mol	Chain	Res	Type
1	A	63	GLU
1	A	64	GLN
1	A	86	GLN
1	A	100	THR
1	A	107	GLN
1	A	120	MET
1	A	134	SER
1	A	163	LYS
1	A	183	SER
1	A	189	GLN
1	A	216	GLN
1	A	287	TRP
1	B	20	GLU
1	B	47	ARG
1	B	72	ASN
1	B	100	THR
1	B	110	CYS
1	B	115	CYS
1	B	117	THR
1	B	134	SER
1	B	135	VAL
1	B	164	GLN
1	B	185	LEU
1	B	189	GLN
1	B	214	LYS
1	B	224	ASP
1	B	253	THR
1	B	287	TRP
1	B	297	LEU
1	B	300	ARG

Some sidechains can be flipped to improve hydrogen bonding and reduce clashes. All (10) such sidechains are listed below:

Mol	Chain	Res	Type
1	A	5	HIS
1	A	16	GLN
1	A	113	GLN
1	A	189	GLN
1	A	205	ASN
1	A	216	GLN
1	B	156	ASN
1	B	189	GLN

Continued on next page...

Continued from previous page...

Mol	Chain	Res	Type
1	B	216	GLN
1	B	235	GLN

5.3.3 RNA ⓘ

There are no RNA molecules in this entry.

5.4 Non-standard residues in protein, DNA, RNA chains ⓘ

There are no non-standard protein/DNA/RNA residues in this entry.

5.5 Carbohydrates ⓘ

There are no carbohydrates in this entry.

5.6 Ligand geometry ⓘ

Of 29 ligands modelled in this entry, 27 are monoatomic - leaving 2 for Mogul analysis.

In the following table, the Counts columns list the number of bonds (or angles) for which Mogul statistics could be retrieved, the number of bonds (or angles) that are observed in the model and the number of bonds (or angles) that are defined in the chemical component dictionary. The Link column lists molecule types, if any, to which the group is linked. The Z score for a bond length (or angle) is the number of standard deviations the observed value is removed from the expected value. A bond length (or angle) with $|Z| > 2$ is considered an outlier worth inspection. RMSZ is the root-mean-square of all Z scores of the bond lengths (or angles).

Mol	Type	Chain	Res	Link	Bond lengths			Bond angles		
					Counts	RMSZ	$\# Z > 2$	Counts	RMSZ	$\# Z > 2$
7	QHF	A	1	2	27,37,37	1.52	5 (18%)	33,54,54	2.25	8 (24%)
7	QHF	B	2	2	27,37,37	2.09	6 (22%)	33,54,54	1.42	4 (12%)

In the following table, the Chirals column lists the number of chiral outliers, the number of chiral centers analysed, the number of these observed in the model and the number defined in the chemical component dictionary. Similar counts are reported in the Torsion and Rings columns. '-' means no outliers of that kind were identified.

Mol	Type	Chain	Res	Link	Chirals	Torsions	Rings
7	QHF	A	1	2	-	0/23/44/44	0/2/3/3
7	QHF	B	2	2	-	0/23/44/44	0/2/3/3

All (11) bond length outliers are listed below:

Mol	Chain	Res	Type	Atoms	Z	Observed(Å)	Ideal(Å)
7	B	2	QHF	C3-C4	-3.20	1.51	1.54
7	B	2	QHF	C11-C12	-2.83	1.47	1.52
7	B	2	QHF	C3-C2	-2.46	1.50	1.54
7	A	1	QHF	C5-C4	-2.24	1.50	1.53
7	A	1	QHF	C6-S1	2.00	1.81	1.78
7	A	1	QHF	C18-N1	2.01	1.50	1.47
7	B	2	QHF	C6-S1	2.02	1.81	1.78
7	B	2	QHF	O1-S1	2.19	1.45	1.43
7	A	1	QHF	C12-C13	2.32	1.44	1.38
7	A	1	QHF	S1-N1	5.33	1.69	1.62
7	B	2	QHF	S1-N1	8.39	1.73	1.62

All (12) bond angle outliers are listed below:

Mol	Chain	Res	Type	Atoms	Z	Observed(°)	Ideal(°)
7	A	1	QHF	C7-N1-S1	-3.65	112.52	118.51
7	A	1	QHF	C6-S1-N1	-3.44	103.15	106.26
7	B	2	QHF	C6-S1-N1	-2.80	103.72	106.26
7	A	1	QHF	C10-C9-C8	-2.74	106.30	112.10
7	A	1	QHF	C1-C2-C20	-2.35	104.73	112.01
7	A	1	QHF	C18-N1-S1	-2.07	115.12	118.51
7	B	2	QHF	C8-C7-N1	2.10	111.87	109.21
7	B	2	QHF	C4-C6-S1	3.27	119.86	115.53
7	B	2	QHF	O1-S1-N1	3.62	110.66	107.20
7	A	1	QHF	C17-C18-N1	4.73	115.21	109.21
7	A	1	QHF	C4-C6-S1	4.86	121.96	115.53
7	A	1	QHF	C18-N1-C7	7.01	120.72	112.20

There are no chirality outliers.

There are no torsion outliers.

There are no ring outliers.

1 monomer is involved in 4 short contacts:

Mol	Chain	Res	Type	Clashes	Symm-Clashes
7	B	2	QHF	4	0

5.7 Other polymers ⓘ

There are no such residues in this entry.

5.8 Polymer linkage issues ⓘ

There are no chain breaks in this entry.

6 Fit of model and data ⓘ

6.1 Protein, DNA and RNA chains ⓘ

In the following table, the column labelled ‘#RSRZ> 2’ contains the number (and percentage) of RSRZ outliers, followed by percent RSRZ outliers for the chain as percentile scores relative to all X-ray entries and entries of similar resolution. The OWAB column contains the minimum, median, 95th percentile and maximum values of the occupancy-weighted average B-factor per residue. The column labelled ‘Q< 0.9’ lists the number of (and percentage) of residues with an average occupancy less than 0.9.

Mol	Chain	Analysed	<RSRZ>	#RSRZ>2	OWAB(Å ²)	Q<0.9
1	A	284/297 (95%)	1.27	65 (22%) 1 2	49, 72, 96, 116	0
1	B	282/297 (94%)	2.34	137 (48%) 0 0	62, 100, 125, 137	0
All	All	566/594 (95%)	1.80	202 (35%) 0 0	49, 83, 119, 137	0

All (202) RSRZ outliers are listed below:

Mol	Chain	Res	Type	RSRZ
1	B	114	THR	12.2
1	B	68	GLU	10.1
1	B	90	PRO	9.9
1	B	111	GLY	8.7
1	B	89	PRO	8.5
1	B	102	ILE	8.2
1	B	55	VAL	7.9
1	B	75	LEU	7.6
1	B	115	CYS	7.3
1	B	112	SER	7.2
1	B	214	LYS	7.1
1	B	91	SER	7.1
1	A	266	VAL	6.9
1	A	90	PRO	6.7
1	B	136	ILE	6.6
1	B	103	LEU	6.4
1	B	88	ASN	6.4
1	B	104	PHE	6.3
1	B	8	VAL	6.1
1	B	93	ARG	6.1
1	B	92	ASP	5.8
1	A	111	GLY	5.7
1	B	113	GLN	5.7
1	B	96	GLU	5.5

Continued on next page...

Continued from previous page...

Mol	Chain	Res	Type	RSRZ
1	B	30	LEU	5.4
1	B	186	ASP	5.4
1	B	215	PRO	5.3
1	B	212	MET	5.3
1	B	7	TYR	5.2
1	A	151	LEU	5.2
1	A	91	SER	5.2
1	A	93	ARG	5.2
1	B	209	GLU	5.1
1	A	102	ILE	5.1
1	B	147	THR	5.0
1	B	210	CYS	5.0
1	A	169	ASN	5.0
1	A	89	PRO	4.9
1	B	262	THR	4.9
1	B	62	ASP	4.9
1	B	187	HIS	4.8
1	B	49	SER	4.8
1	A	136	ILE	4.7
1	B	70	THR	4.7
1	A	216	GLN	4.6
1	B	146	THR	4.6
1	B	188	SER	4.6
1	B	33	LEU	4.6
1	A	33	LEU	4.6
1	B	110	CYS	4.5
1	B	216	GLN	4.5
1	B	82	ASN	4.5
1	B	47	ARG	4.5
1	B	151	LEU	4.5
1	B	284	GLU	4.5
1	A	114	THR	4.4
1	B	120	MET	4.4
1	A	113	GLN	4.3
1	B	118	LEU	4.3
1	B	66	GLY	4.2
1	A	209	GLU	4.1
1	B	185	LEU	4.0
1	B	83	TRP	4.0
1	B	293	CYS	4.0
1	B	134	SER	4.0
1	B	37	ALA	3.9

Continued on next page...

Continued from previous page...

Mol	Chain	Res	Type	RSRZ
1	B	121	ALA	3.9
1	A	155	PHE	3.9
1	A	154	VAL	3.8
1	B	12	LEU	3.8
1	B	218	PRO	3.8
1	A	147	THR	3.8
1	A	112	SER	3.7
1	B	217	ASN	3.7
1	B	143	ALA	3.7
1	B	162	ALA	3.7
1	B	67	PRO	3.7
1	A	104	PHE	3.7
1	B	34	PHE	3.7
1	B	52	LEU	3.6
1	A	143	ALA	3.6
1	A	94	ASP	3.6
1	B	298	VAL	3.6
1	B	189	GLN	3.5
1	A	13	VAL	3.5
1	B	124	GLY	3.5
1	B	63	GLU	3.5
1	B	44	PRO	3.5
1	B	69	VAL	3.5
1	B	94	ASP	3.5
1	B	13	VAL	3.5
1	B	101	ALA	3.5
1	B	181	MET	3.5
1	A	148	ALA	3.5
1	B	184	ASN	3.4
1	B	78	ARG	3.4
1	A	95	ALA	3.4
1	B	14	ALA	3.3
1	B	125	THR	3.3
1	B	54	VAL	3.3
1	B	144	ALA	3.3
1	A	92	ASP	3.2
1	B	160	ASP	3.2
1	A	29	TYR	3.2
1	A	37	ALA	3.1
1	B	166	ALA	3.1
1	A	267	LEU	3.1
1	B	58	LEU	3.1

Continued on next page...

Continued from previous page...

Mol	Chain	Res	Type	RSRZ
1	A	5	HIS	3.1
1	B	97	HIS	3.1
1	A	103	LEU	3.1
1	B	51	SER	3.1
1	B	59	VAL	3.1
1	B	135	VAL	3.1
1	B	211	LEU	3.1
1	A	34	PHE	3.1
1	B	150	GLU	3.1
1	A	168	LEU	3.0
1	A	10	THR	3.0
1	B	41	TYR	3.0
1	A	292	LYS	2.9
1	A	12	LEU	2.9
1	B	71	SER	2.9
1	A	217	ASN	2.9
1	B	290	ASN	2.9
1	B	6	ARG	2.9
1	A	181	MET	2.9
1	B	140	GLY	2.8
1	B	76	THR	2.8
1	B	148	ALA	2.8
1	B	16	GLN	2.8
1	A	202	PHE	2.8
1	B	206	GLY	2.8
1	B	161	ASP	2.8
1	A	32	THR	2.8
1	A	71	SER	2.8
1	B	74	ALA	2.8
1	A	189	GLN	2.7
1	B	73	ALA	2.7
1	B	80	PHE	2.7
1	B	287	TRP	2.7
1	A	157	MET	2.7
1	B	98	TYR	2.6
1	B	95	ALA	2.6
1	A	36	VAL	2.6
1	B	213	ASP	2.6
1	A	186	ASP	2.6
1	B	19	ALA	2.6
1	B	294	VAL	2.6
1	B	281	SER	2.5

Continued on next page...

Continued from previous page...

Mol	Chain	Res	Type	RSRZ
1	B	176	HIS	2.5
1	A	101	ALA	2.5
1	A	134	SER	2.5
1	A	140	GLY	2.5
1	A	62	ASP	2.5
1	B	300	ARG	2.5
1	A	152	GLY	2.4
1	B	224	ASP	2.4
1	A	281	SER	2.4
1	B	32	THR	2.4
1	B	225	LEU	2.4
1	B	127	CYS	2.4
1	B	286	LYS	2.3
1	A	220	GLN	2.3
1	A	126	VAL	2.3
1	B	42	LYS	2.3
1	A	30	LEU	2.3
1	B	64	GLN	2.3
1	A	110	CYS	2.3
1	B	129	PRO	2.3
1	B	117	THR	2.3
1	B	283	GLY	2.3
1	A	199	ILE	2.2
1	B	10	THR	2.2
1	A	7	TYR	2.2
1	B	85	LYS	2.2
1	A	31	LEU	2.2
1	B	133	CYS	2.2
1	A	119	GLY	2.1
1	A	52	LEU	2.1
1	B	167	SER	2.1
1	A	174	ASP	2.1
1	B	282	CYS	2.1
1	B	141	LEU	2.1
1	B	81	CYS	2.1
1	B	100	THR	2.1
1	B	119	GLY	2.1
1	A	144	ALA	2.1
1	B	289	ILE	2.1
1	B	238	PHE	2.1
1	B	201	SER	2.1
1	B	226	PRO	2.1

Continued on next page...

Continued from previous page...

Mol	Chain	Res	Type	RSRZ
1	B	20	GLU	2.0
1	B	230	TYR	2.0
1	A	129	PRO	2.0
1	B	4	SER	2.0
1	B	5	HIS	2.0
1	B	156	ASN	2.0
1	B	192	SER	2.0
1	A	14	ALA	2.0
1	A	238	PHE	2.0
1	B	130	SER	2.0

6.2 Non-standard residues in protein, DNA, RNA chains [i](#)

There are no non-standard protein/DNA/RNA residues in this entry.

6.3 Carbohydrates [i](#)

There are no carbohydrates in this entry.

6.4 Ligands [i](#)

In the following table, the Atoms column lists the number of modelled atoms in the group and the number defined in the chemical component dictionary. LLDF column lists the quality of electron density of the group with respect to its neighbouring residues in protein, DNA or RNA chains. The B-factors column lists the minimum, median, 95th percentile and maximum values of B factors of atoms in the group. The column labelled 'Q< 0.9' lists the number of atoms with occupancy less than 0.9.

Mol	Type	Chain	Res	Atoms	RSCC	RSR	LLDF	B-factors(Å ²)	Q<0.9
6	NA	B	702	1/1	0.75	0.29	0.15	101,101,101,101	0
6	NA	A	701	1/1	0.62	0.18	-0.12	76,76,76,76	0
4	NI	A	601	1/1	0.98	0.18	-0.27	53,53,53,53	0
7	QHF	A	1	35/35	0.91	0.18	-0.42	59,66,70,73	0
7	QHF	B	2	35/35	0.87	0.21	-0.55	68,78,83,84	0
3	CD	A	501	1/1	0.96	0.10	-1.72	80,80,80,80	0
3	CD	B	605	1/1	0.85	0.12	-2.27	107,107,107,107	0
2	ZN	B	402	1/1	0.96	0.05	-2.46	73,73,73,73	0
4	NI	B	606	1/1	0.94	0.07	-2.96	88,88,88,88	0
4	NI	A	504	1/1	0.98	0.31	-	60,60,60,60	0
4	NI	A	609	1/1	0.88	0.25	-	83,83,83,83	0

Continued on next page...

Continued from previous page...

Mol	Type	Chain	Res	Atoms	RSCC	RSR	LLDF	B-factors(\AA^2)	Q<0.9
4	NI	B	618	1/1	0.81	0.20	-	118,118,118,118	0
4	NI	A	611	1/1	0.95	0.12	-	61,61,61,61	0
4	NI	A	607	1/1	0.96	0.18	-	88,88,88,88	0
5	MG	A	610	1/1	0.95	0.42	-	75,75,75,75	0
6	NA	A	703	1/1	0.80	0.22	-	66,66,66,66	0
2	ZN	A	401	1/1	0.98	0.17	-	61,61,61,61	0
4	NI	A	615	1/1	0.88	0.09	-	100,100,100,100	0
4	NI	A	503	1/1	0.92	0.12	-	99,99,99,99	0
5	MG	A	621	1/1	0.93	0.46	-	79,79,79,79	0
6	NA	B	704	1/1	0.91	0.33	-	71,71,71,71	0
4	NI	A	613	1/1	0.80	0.12	-	91,91,91,91	0
4	NI	B	617	1/1	0.92	0.15	-	73,73,73,73	0
4	NI	B	604	1/1	0.89	0.17	-	87,87,87,87	0
5	MG	B	616	1/1	0.74	0.15	-	70,70,70,70	0
4	NI	B	619	1/1	0.78	0.17	-	118,118,118,118	0
3	CD	A	502	1/1	0.96	0.15	-	87,87,87,87	0
3	CD	A	602	1/1	0.97	0.11	-	89,89,89,89	0
4	NI	A	612	1/1	0.88	0.18	-	85,85,85,85	0

6.5 Other polymers [i](#)

There are no such residues in this entry.