



Full wwPDB X-ray Structure Validation Report ⓘ

Feb 1, 2016 – 05:18 AM GMT

PDB ID : 2Q5P
Title : Crystal Structure of PPARgamma bound to partial agonist MRL24
Authors : Bruning, J.B.; Nettles, K.W.
Deposited on : 2007-06-01
Resolution : 2.30 Å(reported)

This is a Full wwPDB X-ray Structure Validation Report for a publicly released PDB entry.
We welcome your comments at validation@mail.wwpdb.org
A user guide is available at
<http://wwpdb.org/validation/2016/XrayValidationReportHelp>
with specific help available everywhere you see the ⓘ symbol.

The following versions of software and data (see [references ⓘ](#)) were used in the production of this report:

MolProbity : 4.02b-467
Mogul : 1.7 (RC4), CSD as536be (2015)
Xtriage (Phenix) : 1.9-1692
EDS : rb-20026688
Percentile statistics : 20151230.v01 (using entries in the PDB archive December 30th 2015)
Refmac : 5.8.0135
CCP4 : 6.5.0
Ideal geometry (proteins) : Engh & Huber (2001)
Ideal geometry (DNA, RNA) : Parkinson et al. (1996)
Validation Pipeline (wwPDB-VP) : trunk26865

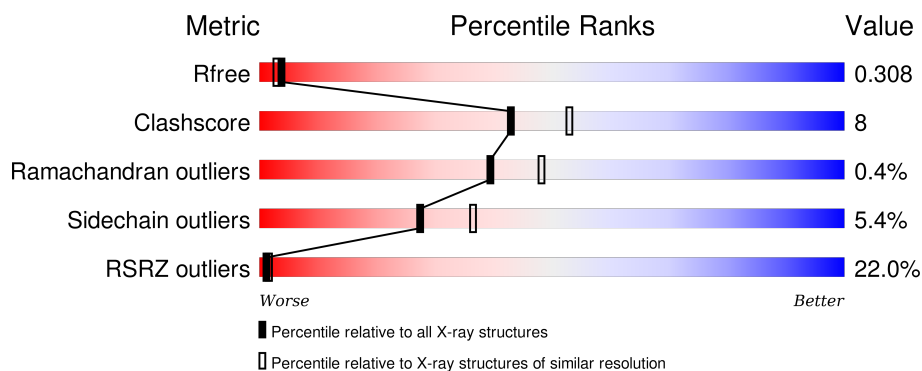
1 Overall quality at a glance

The following experimental techniques were used to determine the structure:

X-RAY DIFFRACTION

The reported resolution of this entry is 2.30 Å.

Percentile scores (ranging between 0-100) for global validation metrics of the entry are shown in the following graphic. The table shows the number of entries on which the scores are based.



Metric	Whole archive (#Entries)	Similar resolution (#Entries, resolution range(Å))
R_{free}	91344	3852 (2.30-2.30)
Clashscore	102246	4452 (2.30-2.30)
Ramachandran outliers	100387	4410 (2.30-2.30)
Sidechain outliers	100360	4409 (2.30-2.30)
RSRZ outliers	91569	3857 (2.30-2.30)

The table below summarises the geometric issues observed across the polymeric chains and their fit to the electron density. The red, orange, yellow and green segments on the lower bar indicate the fraction of residues that contain outliers for ≥ 3 , 2, 1 and 0 types of geometric quality criteria. A grey segment represents the fraction of residues that are not modelled. The numeric value for each fraction is indicated below the corresponding segment, with a dot representing fractions $\leq 5\%$. The upper red bar (where present) indicates the fraction of residues that have poor fit to the electron density. The numeric value is given above the bar.

Mol	Chain	Length	Quality of chain
1	A	274	<div> <div>20%</div> <div> <div></div> <div>73%</div> <div>18%</div> <div>• • 7%</div> </div> </div>
1	B	274	<div> <div>20%</div> <div> <div></div> <div>75%</div> <div>13%</div> <div>• 11%</div> </div> </div>

2 Entry composition [i](#)

There are 3 unique types of molecules in this entry. The entry contains 4223 atoms, of which 0 are hydrogens and 0 are deuteriums.

In the tables below, the ZeroOcc column contains the number of atoms modelled with zero occupancy, the AltConf column contains the number of residues with at least one atom in alternate conformation and the Trace column contains the number of residues modelled with at most 2 atoms.

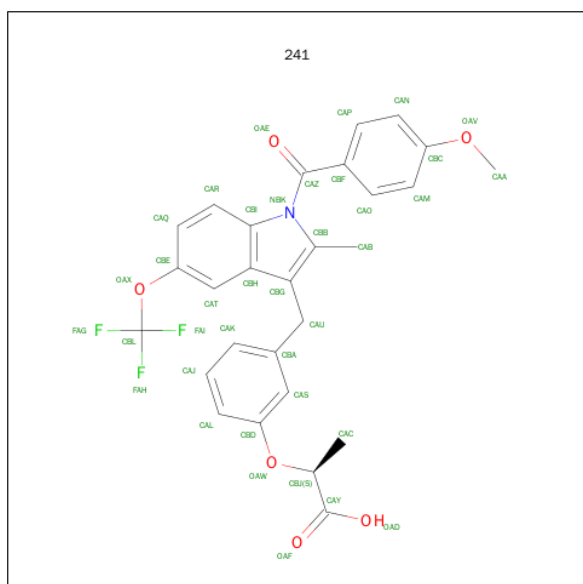
- Molecule 1 is a protein called Peroxisome Proliferator-Activated Receptor gamma.

Mol	Chain	Residues	Atoms					ZeroOcc	AltConf	Trace
1	A	256	Total	C	N	O	S	6	7	0
			2087	1351	340	385	11			
1	B	245	Total	C	N	O	S	0	2	0
			1960	1270	322	359	9			

There are 2 discrepancies between the modelled and reference sequences:

Chain	Residue	Modelled	Actual	Comment	Reference
A	204	SER	-	EXPRESSION TAG	UNP P37231
B	204	SER	-	EXPRESSION TAG	UNP P37231

- Molecule 2 is (2S)-2-(3-{[1-(4-METHOXYBENZOYL)-2-METHYL-5-(TRIFLUOROMETHOXY)-1H-INDOL-3-YL]METHYL}PHENOXY)PROPANOIC ACID (three-letter code: 241) (formula: C₂₈H₂₄F₃NO₆).



Mol	Chain	Residues	Atoms					ZeroOcc	AltConf
2	A	1	Total	C	F	N	O	0	0
			38	28	3	1	6		
2	B	1	Total	C	F	N	O	0	0
			38	28	3	1	6		

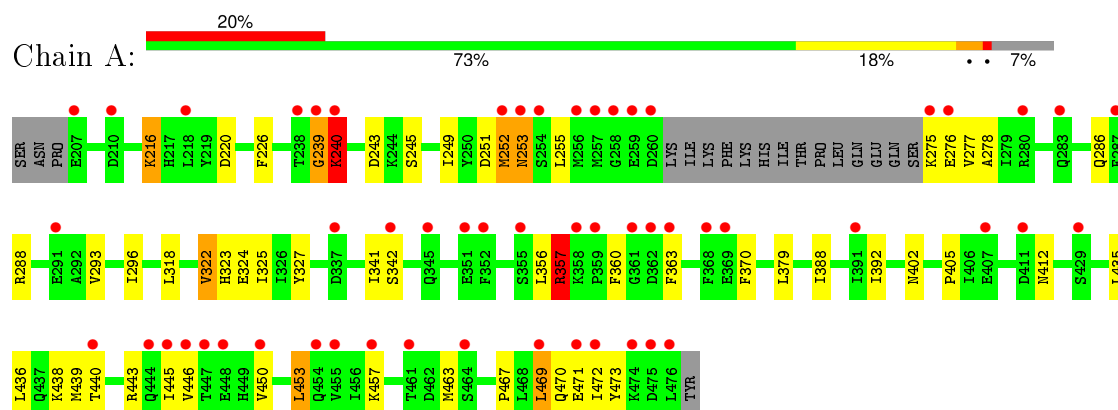
- Molecule 3 is water.

Mol	Chain	Residues	Atoms		ZeroOcc	AltConf
3	A	46	Total	O	0	0
			46	46		
3	B	54	Total	O	0	0
			54	54		

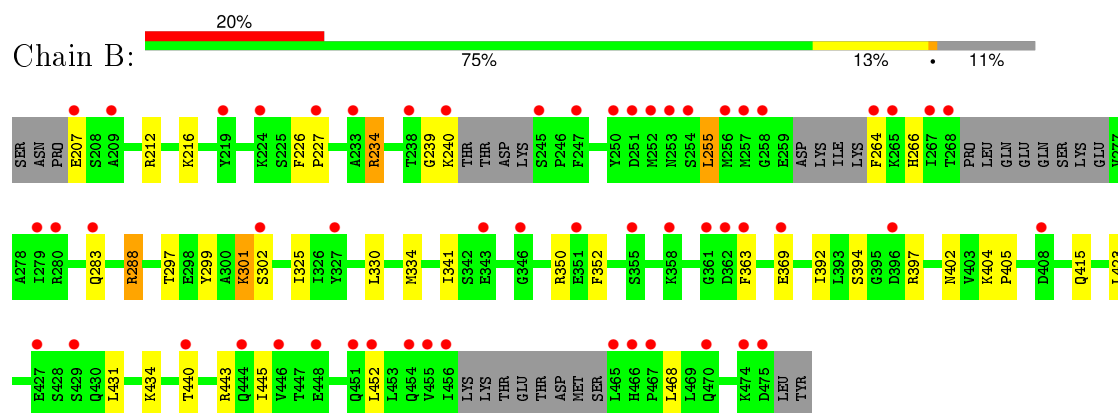
3 Residue-property plots

These plots are drawn for all protein, RNA and DNA chains in the entry. The first graphic for a chain summarises the proportions of errors displayed in the second graphic. The second graphic shows the sequence view annotated by issues in geometry and electron density. Residues are color-coded according to the number of geometric quality criteria for which they contain at least one outlier: green = 0, yellow = 1, orange = 2 and red = 3 or more. A red dot above a residue indicates a poor fit to the electron density ($RSRZ > 2$). Stretches of 2 or more consecutive residues without any outlier are shown as a green connector. Residues present in the sample, but not in the model, are shown in grey.

- Molecule 1: Peroxisome Proliferator-Activated Receptor gamma



- Molecule 1: Peroxisome Proliferator-Activated Receptor gamma



4 Data and refinement statistics

Property	Value	Source
Space group	C 1 2 1	Depositor
Cell constants a, b, c, α , β , γ	91.36Å 61.45Å 117.95Å 90.00° 102.42° 90.00°	Depositor
Resolution (Å)	10.00 – 2.30 9.98 – 2.30	Depositor EDS
% Data completeness (in resolution range)	91.9 (10.00-2.30) 91.9 (9.98-2.30)	Depositor EDS
R_{merge}	0.05	Depositor
R_{sym}	0.05	Depositor
$\langle I/\sigma(I) \rangle$ ¹	9.33 (at 2.31Å)	Xtriage
Refinement program	REFMAC 5.2	Depositor
R, R_{free}	0.206 , 0.247 0.267 , 0.308	Depositor DCC
R_{free} test set	1273 reflections (5.16%)	DCC
Wilson B-factor (Å ²)	45.2	Xtriage
Anisotropy	0.129	Xtriage
Bulk solvent k_{sol} (e/Å ³), B_{sol} (Å ²)	0.46 , 58.9	EDS
Estimated twinning fraction	No twinning to report.	Xtriage
L-test for twinning ²	$\langle L \rangle = 0.48$, $\langle L^2 \rangle = 0.30$	Xtriage
Outliers	0 of 25937 reflections	Xtriage
F_o, F_c correlation	0.91	EDS
Total number of atoms	4223	wwPDB-VP
Average B, all atoms (Å ²)	44.0	wwPDB-VP

Xtriage's analysis on translational NCS is as follows: *The largest off-origin peak in the Patterson function is 5.42% of the height of the origin peak. No significant pseudotranslation is detected.*

¹Intensities estimated from amplitudes.

²Theoretical values of $\langle |L| \rangle$, $\langle L^2 \rangle$ for acentric reflections are 0.5, 0.375 respectively for untwinned datasets, and 0.333, 0.2 for perfectly twinned datasets.

5 Model quality

5.1 Standard geometry

Bond lengths and bond angles in the following residue types are not validated in this section:
241

The Z score for a bond length (or angle) is the number of standard deviations the observed value is removed from the expected value. A bond length (or angle) with $|Z| > 5$ is considered an outlier worth inspection. RMSZ is the root-mean-square of all Z scores of the bond lengths (or angles).

Mol	Chain	Bond lengths		Bond angles	
		RMSZ	# Z >5	RMSZ	# Z >5
1	A	0.96	7/2139 (0.3%)	0.91	8/2879 (0.3%)
1	B	0.66	3/1998 (0.2%)	0.61	0/2689
All	All	0.83	10/4137 (0.2%)	0.78	8/5568 (0.1%)

Chiral center outliers are detected by calculating the chiral volume of a chiral center and verifying if the center is modelled as a planar moiety or with the opposite hand. A planarity outlier is detected by checking planarity of atoms in a peptide group, atoms in a mainchain group or atoms of a sidechain that are expected to be planar.

Mol	Chain	#Chirality outliers	#Planarity outliers
1	A	0	3

All (10) bond length outliers are listed below:

Mol	Chain	Res	Type	Atoms	Z	Observed(Å)	Ideal(Å)
1	A	240[A]	LYS	N-CA	20.49	1.87	1.46
1	A	240[B]	LYS	N-CA	20.49	1.87	1.46
1	A	240[C]	LYS	N-CA	20.49	1.87	1.46
1	B	207	GLU	CD-OE2	12.66	1.39	1.25
1	B	240	LYS	C-O	10.92	1.44	1.23
1	B	207	GLU	CD-OE1	8.51	1.35	1.25
1	A	251	ASP	CG-OD2	6.05	1.39	1.25
1	A	240[A]	LYS	CA-C	5.26	1.66	1.52
1	A	240[B]	LYS	CA-C	5.26	1.66	1.52
1	A	240[C]	LYS	CA-C	5.26	1.66	1.52

All (8) bond angle outliers are listed below:

Mol	Chain	Res	Type	Atoms	Z	Observed(°)	Ideal(°)
1	A	240[A]	LYS	N-CA-CB	17.22	141.59	110.60

Continued on next page...

Continued from previous page...

Mol	Chain	Res	Type	Atoms	Z	Observed(°)	Ideal(°)
1	A	240[B]	LYS	N-CA-CB	17.22	141.59	110.60
1	A	240[C]	LYS	N-CA-CB	17.22	141.59	110.60
1	A	357	ARG	NE-CZ-NH1	-9.38	115.61	120.30
1	A	240[A]	LYS	N-CA-C	-8.35	88.44	111.00
1	A	240[B]	LYS	N-CA-C	-8.35	88.44	111.00
1	A	240[C]	LYS	N-CA-C	-8.35	88.44	111.00
1	A	357	ARG	NE-CZ-NH2	-6.14	117.23	120.30

There are no chirality outliers.

All (3) planarity outliers are listed below:

Mol	Chain	Res	Type	Group
1	A	240[A]	LYS	Peptide
1	A	240[C]	LYS	Peptide
1	A	357	ARG	Sidechain

5.2 Too-close contacts ⓘ

In the following table, the Non-H and H(model) columns list the number of non-hydrogen atoms and hydrogen atoms in the chain respectively. The H(added) column lists the number of hydrogen atoms added and optimized by MolProbity. The Clashes column lists the number of clashes within the asymmetric unit, whereas Symm-Clashes lists symmetry related clashes.

Mol	Chain	Non-H	H(model)	H(added)	Clashes	Symm-Clashes
1	A	2087	0	2167	43	0
1	B	1960	0	2001	24	0
2	A	38	0	23	4	0
2	B	38	0	23	4	0
3	A	46	0	0	0	0
3	B	54	0	0	4	0
All	All	4223	0	4214	68	0

The all-atom clashscore is defined as the number of clashes found per 1000 atoms (including hydrogen atoms). The all-atom clashscore for this structure is 8.

All (68) close contacts within the same asymmetric unit are listed below, sorted by their clash magnitude.

Atom-1	Atom-2	Interatomic distance (Å)	Clash overlap (Å)
1:A:288:ARG:NH2	2:A:5001:241:HAP	1.69	1.06

Continued on next page...

Continued from previous page...

Atom-1	Atom-2	Interatomic distance (Å)	Clash overlap (Å)
1:A:288:ARG:HH21	2:A:5001:241:HAP	1.10	1.05
1:A:288:ARG:HH21	2:A:5001:241:CAP	1.82	0.92
1:A:296[A]:ILE:HD12	1:A:325:ILE:HG21	1.55	0.88
1:A:323[B]:HIS:H	1:A:323[B]:HIS:CD2	1.92	0.83
1:B:283:GLN:HG3	3:B:12:HOH:O	1.82	0.80
1:A:276:GLU:OE2	1:A:357:ARG:NH1	2.18	0.77
1:A:325:ILE:HD11	1:A:392:ILE:HG13	1.65	0.77
1:B:330:LEU:HG	1:B:334:MET:HE2	1.67	0.74
1:A:296[A]:ILE:CD1	1:A:325:ILE:HG21	2.19	0.72
1:B:325:ILE:HD11	1:B:392:ILE:HG13	1.74	0.68
1:B:330:LEU:HG	1:B:334:MET:CE	2.26	0.65
1:A:370:PHE:HB2	1:A:445:ILE:HD11	1.78	0.65
1:A:249:ILE:HD12	1:A:341:ILE:HD11	1.77	0.64
1:A:440:THR:HG21	1:B:443:ARG:HD2	1.81	0.63
1:B:288:ARG:O	1:B:288:ARG:HD3	1.99	0.62
1:A:226:PHE:CZ	1:A:296[A]:ILE:HD13	2.36	0.60
1:A:467:PRO:HA	1:A:470:GLN:HB2	1.84	0.60
1:A:325:ILE:HD11	1:A:392:ILE:CG1	2.33	0.59
1:B:431:LEU:HA	1:B:434:LYS:HE2	1.86	0.57
1:B:341:ILE:HB	2:B:7001:241:HAC2	1.87	0.56
2:B:7001:241:OAF	2:B:7001:241:HAS	2.06	0.56
1:A:296[A]:ILE:CD1	1:A:325:ILE:CG2	2.86	0.53
1:A:436:LEU:HA	1:A:439:MET:HE2	1.92	0.51
1:A:226:PHE:CE1	1:A:296[A]:ILE:HD13	2.46	0.51
1:A:360:PHE:HA	1:A:363:PHE:HD2	1.77	0.50
1:A:379:LEU:HD11	1:A:435:LEU:HD13	1.92	0.50
1:A:323[B]:HIS:CE1	1:A:472:ILE:CG2	2.94	0.49
1:B:297:THR:O	1:B:301:LYS:HD3	2.12	0.48
1:A:453:LEU:O	1:A:457:LYS:HG3	2.14	0.48
1:A:450:VAL:HG12	1:A:473:TYR:CD1	2.49	0.47
1:A:323[B]:HIS:CE1	1:A:472:ILE:HG22	2.49	0.47
1:B:288:ARG:HD2	2:B:7001:241:CAZ	2.44	0.47
1:B:264:PHE:HB3	1:B:266:HIS:CD2	2.50	0.46
1:B:363:PHE:HA	1:B:452:LEU:CD2	2.46	0.46
1:A:402:ASN:O	1:A:405:PRO:HD2	2.16	0.45
1:A:286:GLN:HG3	1:A:469:LEU:HD23	1.97	0.45
1:B:350:ARG:NH2	3:B:76:HOH:O	2.48	0.45
1:B:369:GLU:HG2	3:B:76:HOH:O	2.17	0.44
1:A:216:LYS:HD3	1:A:216:LYS:O	2.17	0.44
1:A:296[A]:ILE:HD11	1:A:325:ILE:CG2	2.48	0.44
1:B:234:ARG:HG3	3:B:43:HOH:O	2.17	0.44

Continued on next page...

Continued from previous page...

Atom-1	Atom-2	Interatomic distance (Å)	Clash overlap (Å)
1:B:402:ASN:O	1:B:405:PRO:HD2	2.17	0.44
1:A:252:MET:CE	1:A:277:VAL:HG11	2.48	0.44
1:A:293:VAL:HG13	1:A:322:VAL:HG21	2.00	0.44
1:A:255:LEU:CD2	1:A:277:VAL:HG23	2.48	0.44
1:A:216:LYS:HD3	1:A:216:LYS:C	2.38	0.43
1:B:299:TYR:O	1:B:302:SER:HB2	2.18	0.43
1:B:226:PHE:HA	1:B:227:PRO:HD3	1.93	0.43
1:A:240[C]:LYS:NZ	1:A:243:ASP:O	2.51	0.43
1:A:324:GLU:OE2	1:A:443:ARG:HD3	2.19	0.43
1:A:327:TYR:HE2	1:A:446:VAL:HG22	1.84	0.42
1:A:277:VAL:HG13	1:A:278:ALA:H	1.82	0.42
1:A:240[C]:LYS:HE3	1:A:245:SER:OG	2.19	0.42
1:A:253:ASN:OD1	1:A:253:ASN:N	2.50	0.42
1:B:330:LEU:C	1:B:334:MET:HE2	2.40	0.42
1:A:325:ILE:CD1	1:A:392:ILE:CG1	2.98	0.42
1:A:325:ILE:HD13	1:A:388[A]:ILE:HG23	2.01	0.42
1:A:318:LEU:O	1:A:322:VAL:HB	2.20	0.42
1:B:288:ARG:CZ	2:B:7001:241:HAP	2.49	0.42
1:B:394[A]:SER:OG	1:B:397:ARG:NE	2.52	0.42
1:A:239:GLY:HA2	1:A:240[B]:LYS:HA	1.73	0.41
1:B:255:LEU:HD12	1:B:352:PHE:HZ	1.86	0.41
1:A:323[B]:HIS:HE1	1:A:472:ILE:HG22	1.84	0.41
1:A:467:PRO:O	1:A:470:GLN:HB2	2.21	0.41
2:A:5001:241:HAR	2:A:5001:241:CBF	2.51	0.40
1:B:445:ILE:HD13	1:B:445:ILE:HA	1.93	0.40
1:B:212:ARG:HD3	1:B:423:LEU:CD1	2.51	0.40

There are no symmetry-related clashes.

5.3 Torsion angles ⓘ

5.3.1 Protein backbone ⓘ

In the following table, the Percentiles column shows the percent Ramachandran outliers of the chain as a percentile score with respect to all X-ray entries followed by that with respect to entries of similar resolution.

The Analysed column shows the number of residues for which the backbone conformation was analysed, and the total number of residues.

Mol	Chain	Analysed	Favoured	Allowed	Outliers	Percentiles	
1	A	260/274 (95%)	246 (95%)	13 (5%)	1 (0%)	39	48
1	B	237/274 (86%)	229 (97%)	7 (3%)	1 (0%)	39	48
All	All	497/548 (91%)	475 (96%)	20 (4%)	2 (0%)	39	48

All (2) Ramachandran outliers are listed below:

Mol	Chain	Res	Type
1	A	239	GLY
1	B	239	GLY

5.3.2 Protein sidechains ⓘ

In the following table, the Percentiles column shows the percent sidechain outliers of the chain as a percentile score with respect to all X-ray entries followed by that with respect to entries of similar resolution.

The Analysed column shows the number of residues for which the sidechain conformation was analysed, and the total number of residues.

Mol	Chain	Analysed	Rotameric	Outliers	Percentiles	
1	A	235/247 (95%)	218 (93%)	17 (7%)	18	22
1	B	216/247 (87%)	207 (96%)	9 (4%)	36	49
All	All	451/494 (91%)	425 (94%)	26 (6%)	27	33

All (26) residues with a non-rotameric sidechain are listed below:

Mol	Chain	Res	Type
1	A	216	LYS
1	A	220	ASP
1	A	240[A]	LYS
1	A	240[B]	LYS
1	A	240[C]	LYS
1	A	252	MET
1	A	253	ASN
1	A	275	LYS
1	A	322	VAL
1	A	342	SER
1	A	356	LEU
1	A	412	ASN
1	A	438	LYS
1	A	453	LEU

Continued on next page...

Continued from previous page...

Mol	Chain	Res	Type
1	A	463	MET
1	A	469	LEU
1	A	471	GLU
1	B	216	LYS
1	B	234	ARG
1	B	255	LEU
1	B	288	ARG
1	B	301	LYS
1	B	404	LYS
1	B	415	GLN
1	B	440	THR
1	B	468	LEU

Some sidechains can be flipped to improve hydrogen bonding and reduce clashes. All (1) such sidechains are listed below:

Mol	Chain	Res	Type
1	A	449	HIS

5.3.3 RNA [i](#)

There are no RNA molecules in this entry.

5.4 Non-standard residues in protein, DNA, RNA chains [i](#)

There are no non-standard protein/DNA/RNA residues in this entry.

5.5 Carbohydrates [i](#)

There are no carbohydrates in this entry.

5.6 Ligand geometry [i](#)

2 ligands are modelled in this entry.

In the following table, the Counts columns list the number of bonds (or angles) for which Mogul statistics could be retrieved, the number of bonds (or angles) that are observed in the model and the number of bonds (or angles) that are defined in the chemical component dictionary. The Link column lists molecule types, if any, to which the group is linked. The Z score for a bond length (or angle) is the number of standard deviations the observed value is removed from the expected

value. A bond length (or angle) with $|Z| > 2$ is considered an outlier worth inspection. RMSZ is the root-mean-square of all Z scores of the bond lengths (or angles).

Mol	Type	Chain	Res	Link	Bond lengths			Bond angles		
					Counts	RMSZ	$\# Z > 2$	Counts	RMSZ	$\# Z > 2$
2	241	A	5001	-	31,41,41	1.33	4 (12%)	39,60,60	1.37	6 (15%)
2	241	B	7001	-	31,41,41	1.34	3 (9%)	39,60,60	1.14	5 (12%)

In the following table, the Chirals column lists the number of chiral outliers, the number of chiral centers analysed, the number of these observed in the model and the number defined in the chemical component dictionary. Similar counts are reported in the Torsion and Rings columns. '-' means no outliers of that kind were identified.

Mol	Type	Chain	Res	Link	Chirals	Torsions	Rings
2	241	A	5001	-	-	0/16/27/27	0/4/4/4
2	241	B	7001	-	-	0/16/27/27	0/4/4/4

All (7) bond length outliers are listed below:

Mol	Chain	Res	Type	Atoms	Z	Observed(Å)	Ideal(Å)
2	B	7001	241	CBI-NBK	-3.53	1.34	1.39
2	A	5001	241	CBI-NBK	-3.50	1.34	1.39
2	A	5001	241	CAU-CBG	2.06	1.55	1.52
2	A	5001	241	CBF-CAZ	3.01	1.54	1.50
2	B	7001	241	OAW-CBJ	3.02	1.48	1.42
2	A	5001	241	OAW-CBJ	3.10	1.48	1.42
2	B	7001	241	CBF-CAZ	3.70	1.56	1.50

All (11) bond angle outliers are listed below:

Mol	Chain	Res	Type	Atoms	Z	Observed(°)	Ideal(°)
2	B	7001	241	CAC-CBJ-CAY	-3.17	109.12	113.18
2	A	5001	241	CAA-OAV-CBC	-2.50	111.66	117.51
2	A	5001	241	CAB-CBB-CBG	-2.39	123.79	129.08
2	B	7001	241	CAB-CBB-CBG	-2.34	123.90	129.08
2	B	7001	241	CBF-CAZ-NBK	2.29	120.95	118.02
2	B	7001	241	OAW-CBJ-CAC	2.65	112.77	106.57
2	B	7001	241	CAB-CBB-NBK	2.77	125.98	122.44
2	A	5001	241	CBF-CAZ-NBK	3.01	121.89	118.02
2	A	5001	241	CAB-CBB-NBK	3.17	126.50	122.44
2	A	5001	241	OAW-CBJ-CAC	3.31	114.31	106.57
2	A	5001	241	CBD-OAW-CBJ	3.56	123.90	118.41

There are no chirality outliers.

There are no torsion outliers.

There are no ring outliers.

2 monomers are involved in 8 short contacts:

Mol	Chain	Res	Type	Clashes	Symm-Clashes
2	A	5001	241	4	0
2	B	7001	241	4	0

5.7 Other polymers [i](#)

There are no such residues in this entry.

5.8 Polymer linkage issues [i](#)

There are no chain breaks in this entry.

6 Fit of model and data

6.1 Protein, DNA and RNA chains

In the following table, the column labelled ‘#RSRZ> 2’ contains the number (and percentage) of RSRZ outliers, followed by percent RSRZ outliers for the chain as percentile scores relative to all X-ray entries and entries of similar resolution. The OWAB column contains the minimum, median, 95th percentile and maximum values of the occupancy-weighted average B-factor per residue. The column labelled ‘Q< 0.9’ lists the number of (and percentage) of residues with an average occupancy less than 0.9.

Mol	Chain	Analysed	<RSRZ>	#RSRZ>2		OWAB(Å ²)	Q<0.9
1	A	256/274 (93%)	1.26	55 (21%)	1 2	32, 42, 67, 76	6 (2%)
1	B	245/274 (89%)	1.24	55 (22%)	1 1	20, 39, 55, 66	0
All	All	501/548 (91%)	1.25	110 (21%)	1 1	20, 41, 62, 76	6 (1%)

All (110) RSRZ outliers are listed below:

Mol	Chain	Res	Type	RSRZ
1	B	465	LEU	8.0
1	B	451	GLN	6.7
1	B	253	ASN	6.4
1	A	260	ASP	6.1
1	B	256	MET	5.9
1	B	475	ASP	5.9
1	B	455	VAL	5.8
1	A	358	LYS	5.8
1	A	474	LYS	5.6
1	B	470	GLN	5.2
1	A	471	GLU	4.8
1	B	245	SER	4.8
1	A	256	MET	4.4
1	A	472	ILE	4.4
1	A	411	ASP	4.3
1	A	280	ARG	4.2
1	B	257	MET	4.2
1	A	476	LEU	4.1
1	A	342	SER	4.1
1	B	252	MET	4.0
1	B	454	GLN	3.9
1	A	253	ASN	3.9
1	B	207	GLU	3.8
1	B	279	ILE	3.8

Continued on next page...

Continued from previous page...

Mol	Chain	Res	Type	RSRZ
1	B	456	ILE	3.7
1	B	280	ARG	3.7
1	A	252	MET	3.6
1	A	257	MET	3.6
1	B	362	ASP	3.5
1	B	209	ALA	3.4
1	A	259	GLU	3.4
1	A	351	GLU	3.4
1	A	457	LYS	3.3
1	A	275	LYS	3.3
1	A	363	PHE	3.3
1	A	361	GLY	3.2
1	B	268	THR	3.2
1	A	276	GLU	3.1
1	B	452	LEU	3.1
1	B	474	LYS	3.1
1	A	369	GLU	3.1
1	A	207	GLU	3.0
1	B	254	SER	3.0
1	B	267	ILE	3.0
1	B	264	PHE	3.0
1	A	337	ASP	2.9
1	B	240	LYS	2.9
1	A	359	PRO	2.9
1	A	448	GLU	2.9
1	A	254	SER	2.9
1	B	363	PHE	2.9
1	A	475	ASP	2.9
1	A	362	ASP	2.9
1	A	283	GLN	2.8
1	A	464	SER	2.8
1	B	358	LYS	2.8
1	B	283	GLN	2.8
1	B	355	SER	2.8
1	B	448	GLU	2.8
1	A	450	VAL	2.7
1	B	224	LYS	2.7
1	B	250	TYR	2.7
1	A	355	SER	2.6
1	A	469	LEU	2.6
1	B	408	ASP	2.5
1	A	454	GLN	2.5

Continued on next page...

Continued from previous page...

Mol	Chain	Res	Type	RSRZ
1	B	466	HIS	2.5
1	B	446	VAL	2.5
1	B	302	SER	2.5
1	B	251	ASP	2.5
1	A	258	GLY	2.5
1	A	461	THR	2.5
1	A	445	ILE	2.5
1	B	369	GLU	2.5
1	B	346	GLY	2.4
1	B	396	ASP	2.4
1	B	444	GLN	2.4
1	B	258	GLY	2.4
1	A	407	GLU	2.4
1	B	327	TYR	2.4
1	B	429	SER	2.4
1	A	240[A]	LYS	2.4
1	B	233	ALA	2.4
1	A	429	SER	2.3
1	B	343	GLU	2.3
1	A	455	VAL	2.3
1	A	444	GLN	2.3
1	A	238	THR	2.3
1	A	368	PHE	2.3
1	B	265	LYS	2.2
1	A	239	GLY	2.2
1	A	287	PHE	2.2
1	B	247	PHE	2.2
1	A	446	VAL	2.2
1	A	391	ILE	2.1
1	B	361	GLY	2.1
1	A	210	ASP	2.1
1	A	345	GLN	2.1
1	B	467	PRO	2.1
1	A	440	THR	2.1
1	B	440	THR	2.1
1	B	219	TYR	2.1
1	A	447	THR	2.1
1	B	351	GLU	2.1
1	A	352	PHE	2.1
1	A	291	GLU	2.0
1	B	238	THR	2.0
1	B	427	GLU	2.0

Continued on next page...

Continued from previous page...

Mol	Chain	Res	Type	RSRZ
1	B	227	PRO	2.0
1	A	218	LEU	2.0

6.2 Non-standard residues in protein, DNA, RNA chains [i](#)

There are no non-standard protein/DNA/RNA residues in this entry.

6.3 Carbohydrates [i](#)

There are no carbohydrates in this entry.

6.4 Ligands [i](#)

In the following table, the Atoms column lists the number of modelled atoms in the group and the number defined in the chemical component dictionary. LLDF column lists the quality of electron density of the group with respect to its neighbouring residues in protein, DNA or RNA chains. The B-factors column lists the minimum, median, 95th percentile and maximum values of B factors of atoms in the group. The column labelled 'Q< 0.9' lists the number of atoms with occupancy less than 0.9.

Mol	Type	Chain	Res	Atoms	RSCC	RSR	LLDF	B-factors(Å ²)	Q<0.9
2	241	B	7001	38/38	0.89	0.16	-0.57	55,62,72,74	0
2	241	A	5001	38/38	0.92	0.13	-1.40	54,62,71,72	0

6.5 Other polymers [i](#)

There are no such residues in this entry.